

ANNUAL REPORT 2006



TENNESSEE DEPARTMENT OF CORRECTION



**The Tennessee Department of Correction
Fiscal Year 2005-2006 Annual Report
Coordinated and published by**

Policy, Planning, and Research Division

**Linda M. Nutt, Ph.D., Director
Cynthia Taylor
Sara Conte**

To request a copy of this report, or other research information, contact us at

Telephone: (615) 741-1000 ext. 8133

Email: research@mail.state.tn.us

Visit the TDOC Website: www.state.tn.us/correction

Pursuant to the State of Tennessee's policy on nondiscrimination, the Department of Correction does not discriminate on the basis of race, gender, religion, color, national or ethnic origin, age disability, or military service in its policies, or in the admission of or access to, or treatment or employment in, its programs, services, or activities.

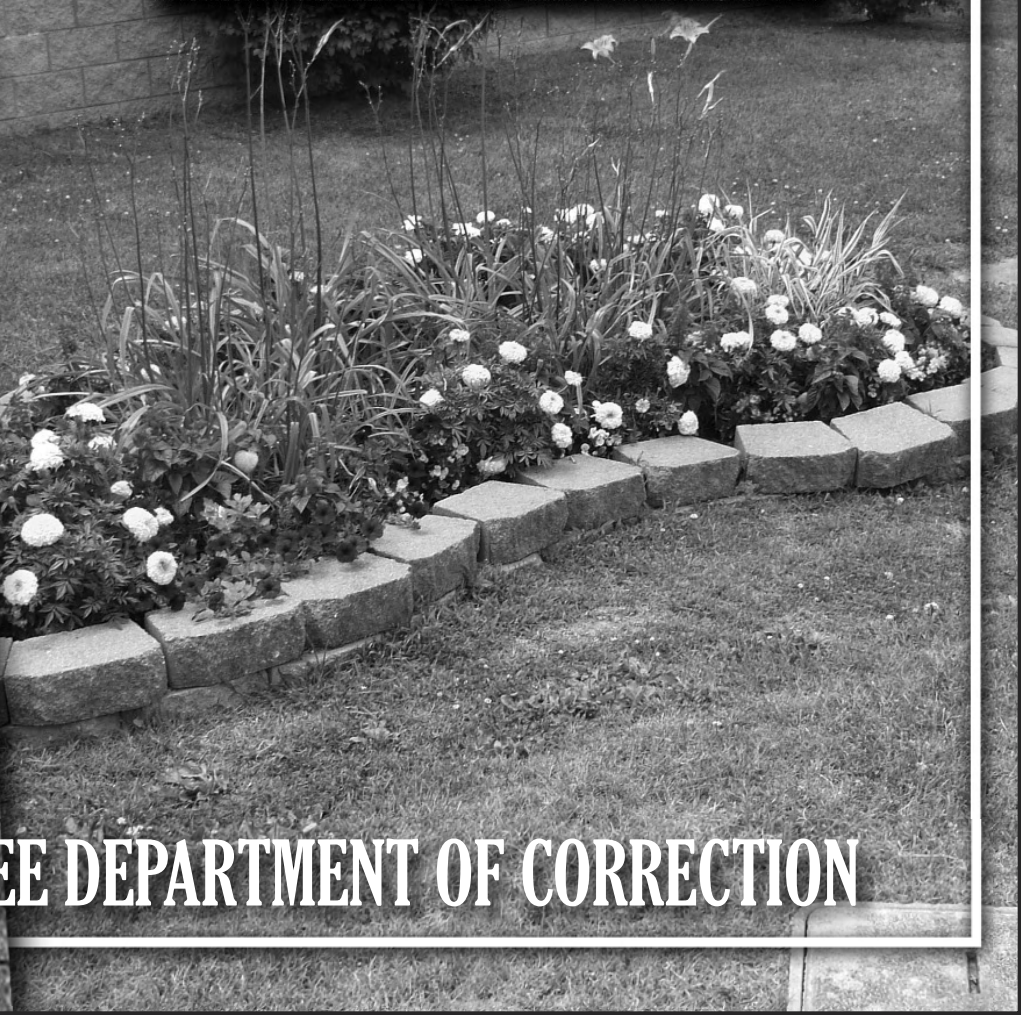
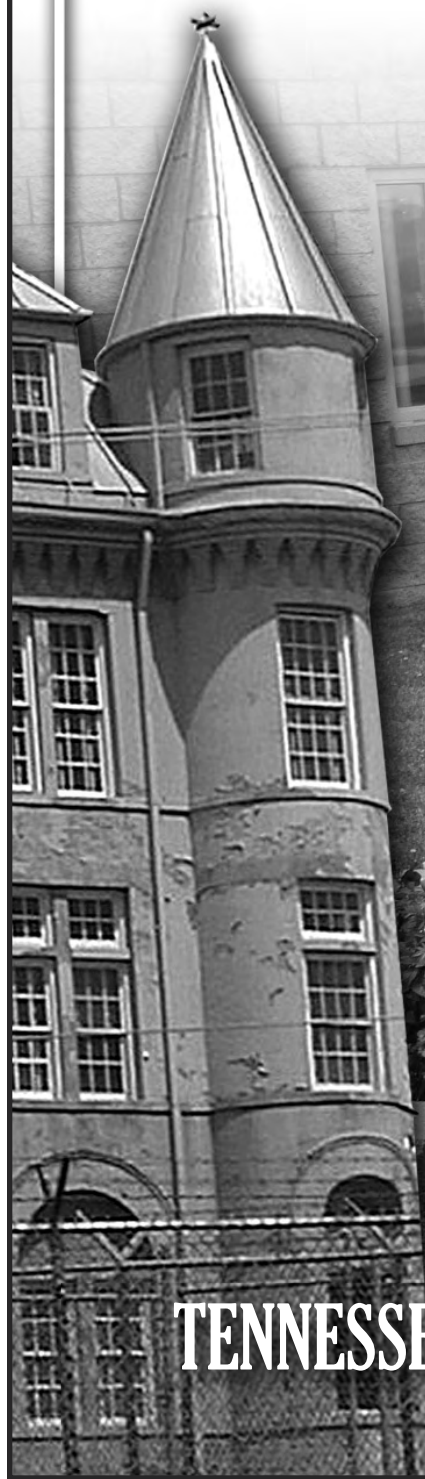
Equal Employment Opportunity/Affirmative Action inquiries or complaints should be directed to the Department of Correction, EEO/AA Coordinator, Personnel Office, 3rd Floor Rachel Jackson Building, 320 Sixth Avenue North, Nashville, TN 37243-0465, Telephone (615)741-1000 ext. 8026 or TDD (for persons with hearing impairments) (615)532-4423.

ADA inquiries or complaints should be directed to the Department of Correction, Human Resource Office, 3rd Floor Rachel Jackson Building, 320 Sixth Avenue North, Nashville, TN 37243-0465. Telephone (615)741-1000 ext. 1508 or TDD (for persons with hearing impairments). (615)532-4423.

TABLE OF CONTENTS

The Organization	3
Letter from the Commissioner	4
Mission, Vision, Values	5
Organizational Charts	6
Department Goals	8
Staffing and Budget	10
Staffing	11
Budget	17
Population and Capacity	20
Incarceration Rates	21
Institutional Capacity and Population Distribution	22
Operating Capacity and Population Projections	23
Offender Accountability	26
Community Service Crews	28
Inmate Jobs	30
Offender Trends	32
Felon Population Trends	33
Local Jail Census	36
Inmate Demographics	37
Average Sentence Length	39
Admissions and Releases	40
Offender Programs	47
Transition Centers	50
Substance Abuse	52
Education	55
Pre-Release	57
Volunteer Services	58
Mental Health	59
Health	60
Victim Services	61
Institutions	62
Institutions and Security Designations	63
Institutional Demographics	64
Average Time Served	65
Institutional Incidents	66
Tennessee Correction Academy	71
Brushy Mountain and Morgan County Correctional Complex	73
Charles Bass Correctional Complex	74
DeBerry Special Needs Facility	75
Mark Luttrell Correctional Center	76
Northeast Correctional Complex	77
Northwest Correctional Complex	78
Riverbend Maximum Security Institution	79
Southeastern Tennessee State Regional Correctional Facility	80
Tennessee Prison for Women	81
Turney Center Industrial Prison	82
Wayne County Boot Camp	83
West Tennessee State Penitentiary	84
Correctional Corporation of America (CCA) Facilities	85

THE ORGANIZATION



TENNESSEE DEPARTMENT OF CORRECTION

LETTER FROM THE COMMISSIONER...

Ladies and Gentlemen:

It is my pleasure to present the Tennessee Department of Correction's (TDOC) annual report for fiscal year (FY) 2005-2006. Please take a few moments to review the information and statistical data it contains. I believe the Department of Correction has accomplished a great deal over the past year.

Listed below are a few highlights from FY2005-2006 that I am pleased to bring to your attention:

- The department continued to be one of a few states to maintain its national accredited status by the American Correctional Association.
- Inmates in TDOC facilities showed a system-wide average GED passing rate of 70.9 percent.
- Over 5,694 inmates were enrolled in vocational programs, such as computer repair, carpentry/millwork, and masonry.
- The incident rate continued to show a pattern of decline. The violent incident rate for FY2005-2006 declined slightly (from 6.19 in FY05 to 5.74 in FY06). During the past fiscal year, the overall incident rate was 50.72 incidents per 100 inmates, which is 8.2 percent lower than the reported rate for FY2004-2005.
- Community work crews completed 1,191,986 hours of work in Tennessee communities during FY2005-2006 with a total savings of \$6,138,728.
- The second Tennessee Criminal Justice Summit was held, thereby continuing the work to develop a road map for the state's criminal justice future.
- The correctional officer turnover rate for TDOC facilities was 26 percent, which was 2.0 percent lower than in calendar year 2004.

Despite the challenges presented by necessary budget reductions, these accomplishments reflect the dedication of our staff in managing a safe and humane correctional environment.

Although the Tennessee Department of Correction will continue to face difficult challenges, we anticipate that sound management and implementation of best practices will prevail. I am encouraged by the endless opportunities that lie ahead. We face new challenges with special populations such as elderly and mentally ill inmates who must be managed within the scope of available resources.

Several priority initiatives and budgetary directions that will be pursued in the next fiscal year's planning and budgeting cycle include:

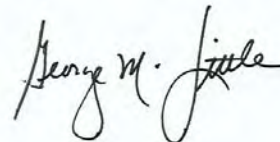
- Continue to meet the American Correctional Association standards of accreditation at each of our 16 facilities.
- Collaborate with the Board of Probation and Parole to initiate a parole technical violator diversion program.

- Implement a smoke-free environment at each of our correctional facilities.
- Continue to examine innovative, cost-effective, and safe options to address bed demand and expansion.
- Establish additional transition center programs. This will include interagency agreements and partnerships with community-based organizations for pre and post-release services.
- Improve delivery of medical care to the inmate population, with special emphasis on hospice and telemedicine.
- Implement random employee drug testing as a measure to reduce the threat of increased introduction of contraband into facilities and to create a safer workplace.
- Continue using drug dogs to reduce the introduction of contraband into our facilities.
- Implement the Transition Accountability Plan (TAP) to establish an internal classification system and re-entry plan for inmates that includes a validated risk assessment instrument to identify and prioritize any programming needs during incarceration.

While the above list reflects current concerns and future emphasis, it is not exhaustive. The Department will continue to focus on many areas in the next several years. We recognize that one of our biggest challenges is the increasing numbers of offenders, the finite number of dollars to operate and build prisons, and the need for cost-efficient ways to reduce recidivism. Because of this, the leaders of the Department of Correction have been tasked with the responsibility of developing a long-term strategic plan that is both realistic and available.

During the next fiscal year, the Department of Correction will continue to incarcerate felony offenders in a secure, humane, and disciplined institutional setting that meets the standards of law, while emphasizing public safety, offender rehabilitation and the advancement of strong criminal justice policy. We will continue to seek ways to fulfill our mission at the lowest possible cost to the state.

Sincerely,



George M. Little
Commissioner



MISSION....

To enhance public safety in Tennessee through the incarceration and rehabilitation of felony offenders.

VISION....

The Department will maintain a standard of excellence in security and corrections through:

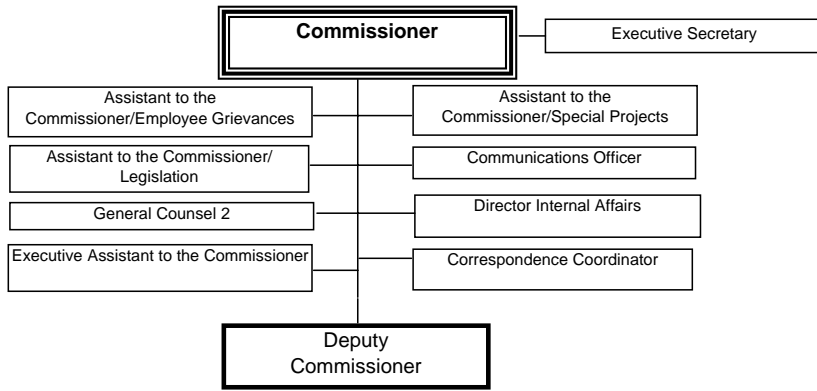
- Professional development of its employees
- Operations enhanced by technology and best practices
- Opportunities for offender rehabilitation so as to reduce recidivism

VALUES....

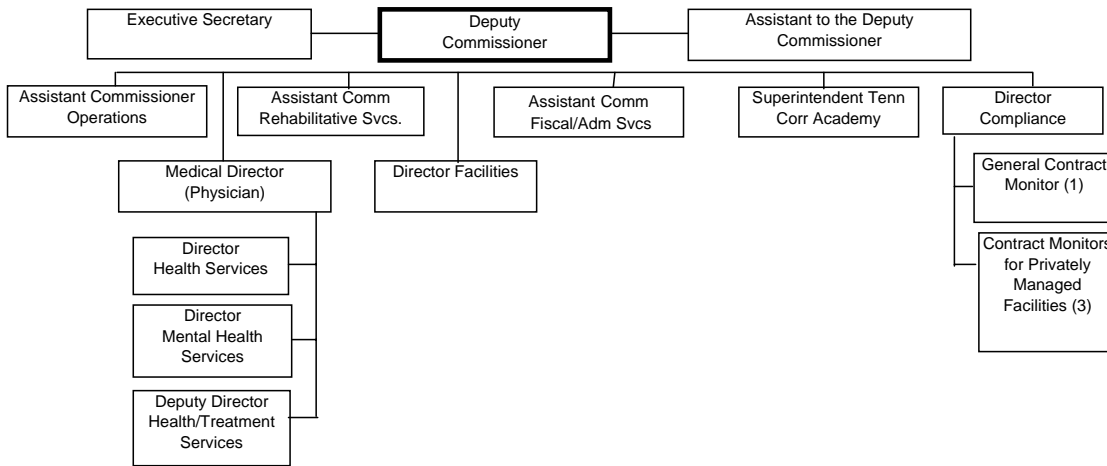
- Commitment to fair and ethical treatment of convicted felons
- Respect for fellow employees
- Responsibility and accountability to the citizens of Tennessee
- Integrity in both external and internal relationships



Organizational Charts



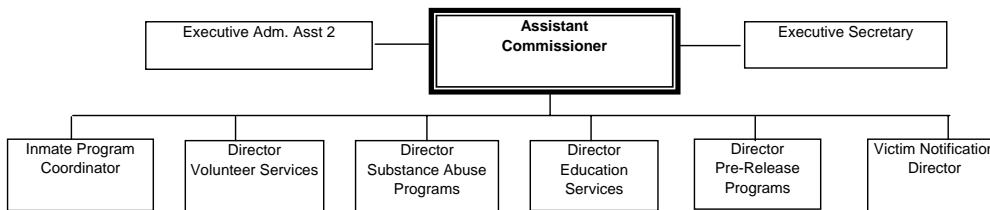
George Little
 _____ July 1, 2006
 George Little, Commissioner Date



Gayle Ray
 _____ July 1, 2006
 Gayle Ray, Deputy Commissioner Date

George Little
 _____ July 1, 2006
 George Little, Commissioner Date

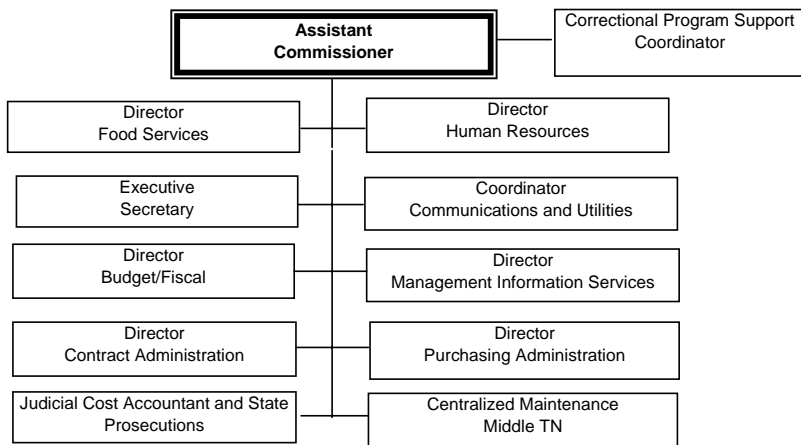
REHABILITATIVE SERVICES



Jim Cosby
 _____ July 1, 2006
 Jim Cosby, Assistant Commissioner Date

Gayle Ray
 _____ July 1, 2006
 Gayle Ray, Deputy Commissioner Date

ADMINISTRATIVE AND FISCAL SERVICES



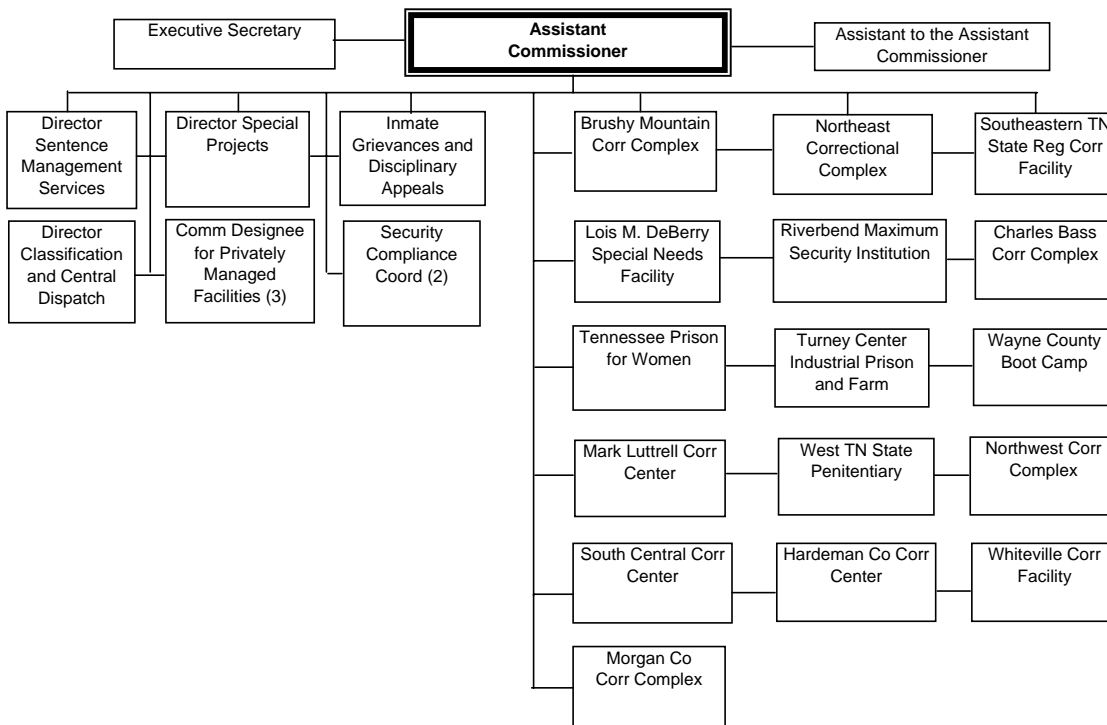
Cathy A. Posey

 Cathy Posey, Assistant Commissioner July 1, 2006
 Date

Gayle Ray

 Deputy Commissioner July 1, 2006
 Date

OPERATIONS



Roland D. Colson

 Roland Colson, Assistant Commissioner July 1, 2006
 Date

Gayle Ray

 Gayle Ray, Deputy Commissioner July 1, 2006
 Date

Department Goals

The Tennessee Department of Correction (TDOC) exists for the purpose of safeguarding the public by providing supervision of convicted felons during their period of commitment to its jurisdiction. The Department fulfills its obligations through the incarceration of inmates in a variety of secured institutional settings.

In an effort to ensure continued protection of the citizens of Tennessee in the most efficient and effective manner, TDOC has developed five (5) major goals and strategies for achieving these goals. TDOC tracks its success regarding these goals on a quarterly basis.

TDOC Goals

- Goal 1: Through FY 2010, the inmate population projection model will vary less than 2% from the actual inmate population.
- Goal 2: Through FY 2010, maintain accreditation of the department through the American Correctional Association with an average compliance score of 98.
- Goal 3: By FY 2010, TDOC will decrease the correctional officer turnover rate to 20%.
- Goal 4: By FY 2010, 93% of inmates will be assigned to jobs.
- Goal 5: Through FY 2010, 86% of HIV positive offenders will be treated with antiretroviral agents.

Where We Are

- Goal 1: During FY 05/06, the average percentage of error between the projected incarcerated felon population and the actual population was 0.8%.
- Goal 2: TDOC maintained accreditation of the Department with a final compliance score of 98%.
- Goal 3: In CY 2004, the average TDOC correctional officer turnover rate was 26%.
- Goal 4: During FY 05/06, 95% of inmates were assigned to jobs.
- Goal 5: In FY 05/06, 94% of HIV positive offenders were treated with antiretroviral agents.

Major Milestones and Accomplishments

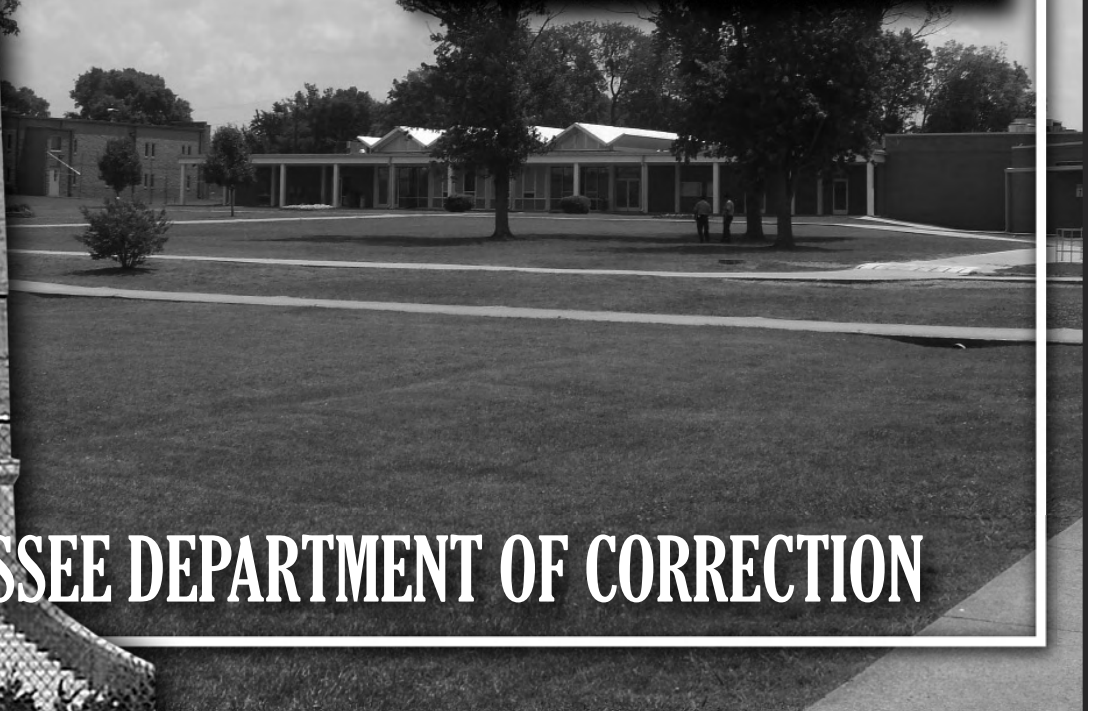
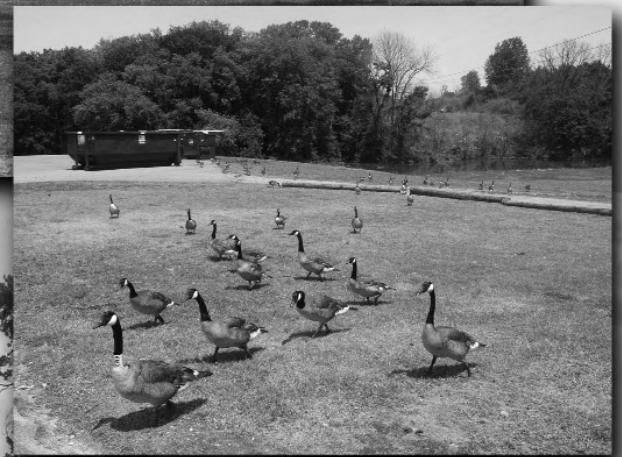
Fiscal year 2005-2006 was extremely successful for the Department.

Some of the major accomplishments were:

- Implemented two transition communities within our prisons, which are designed to gradually prepare offenders to live successfully in the free world.
- Broke ground on the Morgan County Correctional Complex expansion.
- Restructured Health Services to enhance inmate care.
- Held three regional Tennessee Criminal Justice Summit meetings.
- Performed over 1,191,986 hours of inmate community service work.
- Added a total of 304 beds at three new Therapeutic Community programs.
- Implemented a pilot program at NECX requiring all inmates expiring their sentence to complete pre-release programming prior to his/her release.
- Raised more dollars for the State Employee Charitable Contribution Fund than in any other year in history.
- Fully implemented a sexual predator and victim predictor evaluation process for all inmates.
- Implemented a new Workplace Harassment training program.



BUDGET & STAFFING

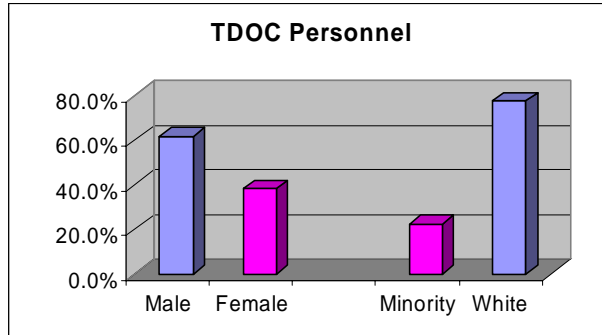


TENNESSEE DEPARTMENT OF CORRECTION

Human Resources

The Central Office Human Resources section provides technical assistance and advice and ensures compliance with Civil Service rules, EEOC/Affirmative Action, state law, and policies. This section also implements and monitors personnel-related programs such as employee relations, recruitment and retention, training, performance evaluations, employee transactions, and employee benefits, including employee assistance, insurance, retirement, family medical leave, worker's compensation, and accommodations under the Americans with Disabilities Act.

Personnel by Race and Sex June 30, 2006



	Male	Female	Total
White	2,673	1,418	4,091
Minority	587	605	1,192
Total	3,260	2,023	5,283

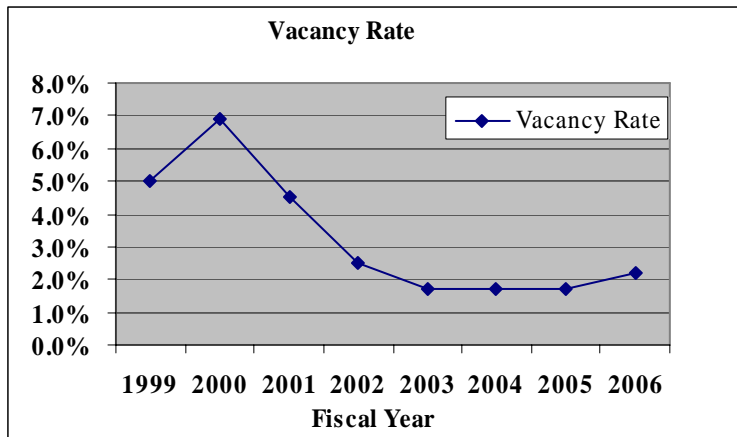
Personnel by Class Fiscal Year End

	FY05-06	FY04-05	FY03-04	FY02-03	FY01-02	FY00-01	FY99-00
Officials/Administrators	2.0%	2.0%	1.8%	1.8%	1.8%	1.9%	1.9%
Security	64.4%	64.9%	62.0%	60.1%	62.6%	60.5%	59.9%
Maintenance	4.4%	4.3%	1.2%	0.6%	1.2%	1.0%	1.0%
Professional	16.1%	15.8%	14.4%	15.2%	13.9%	14.3%	14.6%
Skilled	2.1%	2.1%	3.5%	3.5%	3.4%	3.4%	3.4%
Clerical	7.5%	7.8%	6.1%	6.1%	6.6%	6.6%	6.8%
Technical	3.5%	3.0%	6.3%	6.7%	7.1%	7.1%	7.3%
Para-Professional	n/a	0.1%	4.8%	5.9%	5.2%	5.2%	5.2%

Vacancies in Uniformed Staff

Correctional Officer Series Vacancy Rates from 2006

As of	Vacant Positions	Total Positions	Vacancy Rate
7/1/06	73	3,340	2.18%
7/1/05	55	3,335	1.65%
7/1/04	56	3,318	1.70%
7/1/03	57	3,326	1.71%
7/1/02	85	3,322	2.47%
7/1/01	144	3,221	4.50%
7/1/00	221	3,213	6.90%
7/1/99	163	3,366	5.00%



Correctional Officer vacancy rates have declined significantly since June 1999 (from 5.0% to 2.2%).

However, it should be noted that the vacancy rate increased from 1.7% in 2005 to 2.2% in 2006.

Correctional Officer Series June 30, 2006

Positions	Correctional Officer	Correctional Clerical Officer	Corporal	Sergeant	Lieutenant	Captain	Total
Total	2,478	133	416	178	75	60	3,340
Filled	2,416	131	411	176	74	59	3,267

Authorized FTE in FY 2005-2006

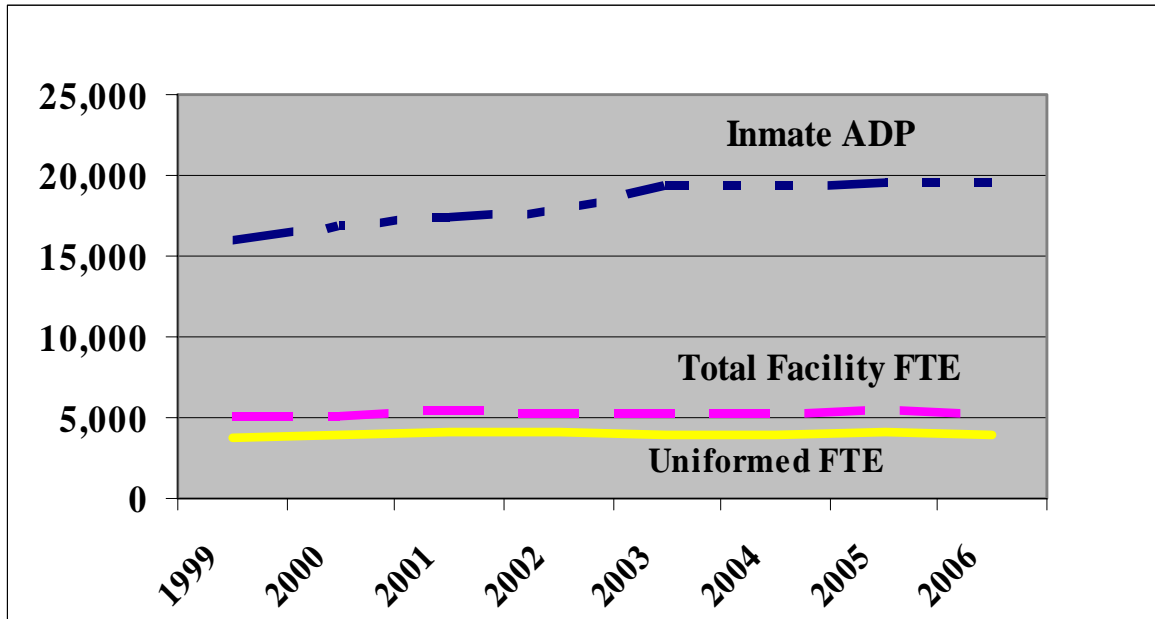
Location	Uniformed	Non-Uniformed
Facilities		
Brushy Mountain Correctional Complex	467	95
Charles Bass Correctional Complex	322	64
DeBerry Special Needs Facility	377	100
Mark Luttrell Correctional Complex	155	48
Northeast Correctional Complex	432	119
Northwest Correctional Complex	529	153
Riverbend Maximum Security Institution	268	57
Southeastern Tennessee. State Regional Facility	241	82
Tennessee Prison for Women	195	60
Turney Center Industrial Prison and Farm	252	68
Wayne County Boot Camp	126	29
West Tennessee State Penitentiary	605	143
Subtotal – Facilities	3,969	1,018
Central Office	7	206
Total	3,976	1,224
% of Total	76%	24%

96% of the total authorized positions for TDOC are in correctional facilities.

76% of the total system-wide FTE are uniformed security.

Staffing Trends

Facility Staffing vs. Inmate Average Daily Population 1999-2006



Correctional facility staffing trends are presented in the graph above, which include data on total facility staffing and uniformed security staffing levels as compared to the average daily inmate population.

Between FY 1999 and FY 2006:

- Inmate average daily population increased by 22.0%
- Total facility staffing increased by 0.9%.
- Total uniformed security staffing increased by only 8.0%.

Salary Comparisons

The ability to recruit and retain qualified staff continues to be a concern for the Department. Because salary levels are critical in recruitment and retention of staff, the Department closely monitors other correctional and law enforcement agencies to compare its salaries with those offered by agencies performing similar functions.

State DOC	Average Starting Salary
Arkansas	\$27,026
North Carolina	\$25,301
Alabama	\$23,917
Georgia	\$23,614
Missouri	\$23,520
Tennessee	\$23,064
Kentucky	\$20,651
Mississippi	\$19,623

When compared to other neighboring state correctional departments, TDOC ranks 6th in the average starting salary for correctional officers.

Source: Southern Legislative Conference, July 2005.

Davidson County Sheriff's Office	\$28,321
Shelby County Sheriff's Office	\$31,262
Knox County Sheriff's Office	\$25,592
Hamilton County Sheriff's Office	\$25,068
Federal Bureau of Prisons (2003)	\$23,000

TDOC also ranks low when compared to other correction and law enforcement agencies located near some of our facilities. These are some of the agencies with whom we compete directly in the recruitment and retention of uniformed staff.

Correctional Officer Turnover

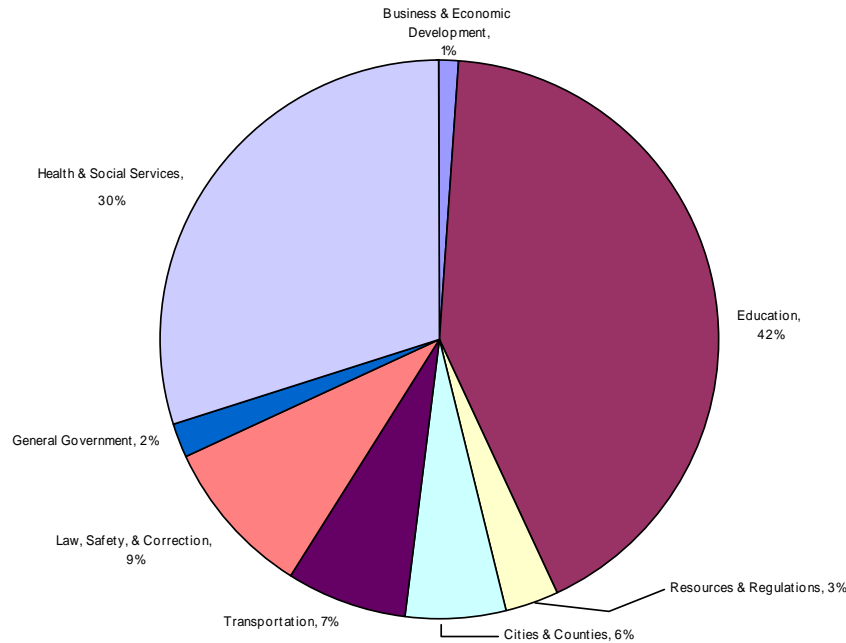
TDOC Correctional Officer Turnover Rates: CY 2005

Institution	Correction Officer Turnover Rate
Brushy Mountain Correctional Complex (BMCX)	11.5%
Charles Bass Correctional Complex (CBCX)	39.0%
DeBerry Special Needs Facility (DSNF)	28.0%
Mark Luttrell Correctional Facility (MLCC)	15.8%
Northeast Correctional Complex (NECX)	17.5%
Northwest Correctional Complex (NWCX)	25.7%
Riverbend Maximum Security Institution (RMSI)	45.0%
Southeastern TN State Regional Facility (STSRC)	9.6%
Tennessee Prison for Women (TPW)	58.9%
Turney Center Industrial Prison (TCIP)	20.0%
Wayne County Boot Camp (WCBC)	11.7%
West Tennessee State Penitentiary (WTSP)	28.2%
System-wide	25.5%

In CY 2005, the correctional officer turnover rate was 26%. This represents a 2.0% decrease from CY 2004. The turnover rate includes all correctional officers exiting positions, except those occurring when an employee is promoted within the same TDOC facility.

TDOC in the Context of the State Budget

FY 2005-2006 Total Budget Recommendations By Function of Government



The Governor's Budget included \$25.1 Billion in recommended funding allocated by "functional area."

The Department's total operating budget for FY06 was \$596,788,700. Additionally the Department received approval for a \$6,979,200 supplemental. Improvements in this operating budget totaled \$13,926,700. Of this amount, \$2,500,000 was for capacity increases dealing with increased population in local jails, \$2,023,500 was for contract increases, and \$8,531,200 was for health and mental health services.

The Department's actual expenditures were \$562,117,400 or approximately 6% under budget. The expenditures are based on the third STARS preliminary for FY06 closing. It does not take into account the fact that outstanding encumbrances have not been liquidated.

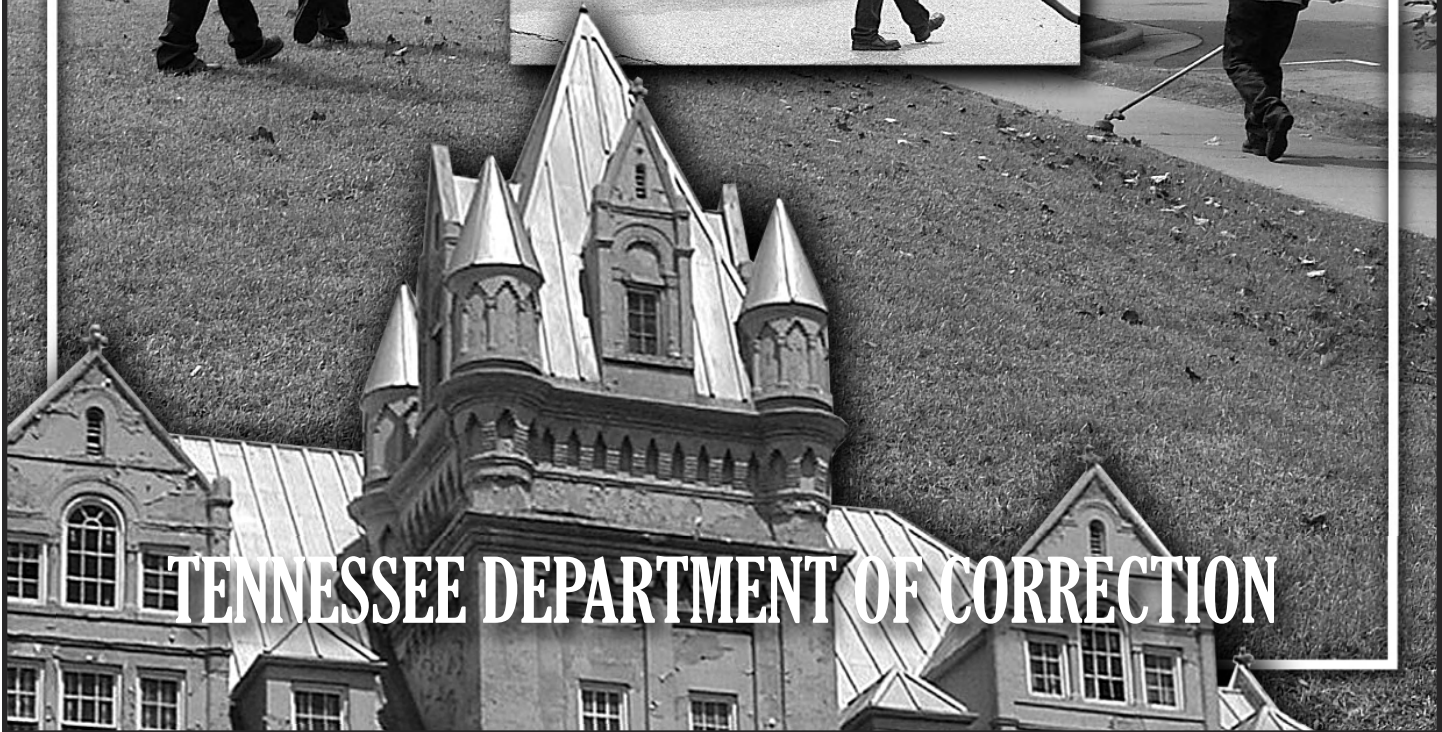
Tennessee Department of Correction
Expenditure Summary
Fiscal Year 2005-2006
From 4th preliminary dated 09/02/06

EXPENDITURES BY OBJECT	Administration	Major Maintenance & Construction	Adult Institutions	State Prosecution	Total
Regular Salaries	10,211,900	839,900	131,997,400	-	143,049,200
Longevity	345,900	11,400	4,575,500	-	4,932,800
Overtime	144,000	27,300	6,829,500	-	7,000,800
Employee Benefits	3,834,300	294,900	61,619,000	-	65,748,200
Total Personal Services & Benefits	14,536,100	1,173,500	205,021,400	-	220,731,000
Travel	565,100	-	2,573,400	-	3,138,500
Printing, Duplicating, and Binding	165,600	-	573,700	-	739,300
Utilities and Fuel	480,300	-	16,837,000	-	17,317,300
Communications	102,900	1,800	359,900	-	464,600
Maintenance Repairs and Services	132,200	1,462,100	1,426,200	-	3,020,500
Professional Services and Dues	1,498,100	52,500	70,069,600	9,686,500	81,306,700
Supplies and Materials	2,545,200	767,000	29,682,600	-	32,994,800
Rentals and Insurance	1,392,600	33,900	6,091,200	-	7,517,700
Motor Vehicle Operations	14,700	4,100	652,300	-	671,100
Awards and Indemnities	2,300	-	5,049,800	-	5,052,100
Grants and Subsidies	38,700	300	56,929,300	108,938,800	165,907,100
Unclassified	2,800	9,800	1,400	-	14,000
Stores for Resale/Reissue/Manufacture	500	-	7,145,900	-	7,146,400
Equipment	373,000	129,300	118,700	-	621,000
Land	-	-	-	-	-
Buildings	-	-	-	-	-
Discounts Lost	-	-	400	-	400
Highway Construction	-	-	-	-	-
Professional Services Provided By Other State Agencies	1,354,300	277,600	8,752,800	712,900	11,097,600
Debt Retirement	-	-	-	678,800	678,800
Debt Interest	-	-	-	-	-
Total Other Expenditures	8,668,300	2,738,400	206,264,200	120,017,000	337,687,900
GRAND TOTAL	23,204,400	3,911,900	411,285,600	120,017,000	558,418,900
FUNDING SOURCES					
State Appropriation	18,562,100	3,471,700	400,288,900	119,030,200	541,352,900
Federal	514,900	123,100	-	-	638,000
Counties	-	-	-	-	-
Cities	-	-	-	-	-
Non-Governmental	-	-	-	-	-
Current Services	3,527,900	-	9,533,100	986,800	14,047,800
Inter-Departmental	599,500	317,100	1,463,600	-	2,380,200
Reserves	-	-	-	-	-
Personnel					
Full Time	283	22	5,034	-	5,339
Part Time	-	-	-	-	-
Seasonal	-	-	-	-	-
Total	283	22	5,034	-	5,339

Analysis Program Service Costs
Actual Expenditures for Fiscal Year 2005-2006

	Average Daily Count	Total Cost	Total Operating Costs Per Day	State Appropriation	State Appropriation Operating Cost Per Day	State Appropriated Health Cost	Health Services Cost Per Inmate/Per Day	State Appropriated Mental Hlth Cost	Mental Health Services Cost Per Inmate/Per Day	State Appropriated Education/Library Cost
Brushy Mountain Correctional Complex	1,531	\$ 37,692,500	\$ 67.45	36,542,400	\$ 65.39	5,168,377	9.25	664,750	1.19	812,086
Hardeman County Correctional Facility	1,964	\$ 32,850,800	\$ 45.83	32,838,800	\$ 45.81	650,410	0.91		0.00	
Whiteville Correctional Facility	1,490	\$ 25,859,500	\$ 47.55	25,842,700	\$ 47.52	601,361	1.11		0.00	
DeBerry Special Needs Facility	641	\$ 31,586,600	\$ 135.01	31,210,800	\$ 133.40	9,325,686	39.86	4,280,270	18.29	290,390
Mark Luttrell Correctional Center	416	\$ 12,130,400	\$ 79.89	11,655,400	\$ 76.76	1,790,155	11.79	313,154	2.06	506,807
Charles Bass Correctional Complex	1,026	\$ 26,107,300	\$ 69.71	25,125,000	\$ 67.09	3,350,782	8.95	612,037	1.63	150,983
Northeast Correctional Complex	1,801	\$ 35,664,300	\$ 54.25	34,354,500	\$ 52.26	5,600,689	8.52	824,378	1.25	1,282,712
Northwest Correctional Complex	2,286	\$ 43,741,800	\$ 52.42	42,126,900	\$ 50.49	7,033,318	8.43	975,754	1.17	2,720,212
Riverbend Maximum Security Institution	695	\$ 21,228,600	\$ 83.68	20,820,800	\$ 82.08	2,494,153	9.83	494,344	1.95	901,241
Southeastern TN State Regional Correctional Facility	944	\$ 20,777,000	\$ 60.30	19,878,900	\$ 57.69	2,614,407	7.59	487,214	1.41	932,724
TN Prison for Women	733	\$ 17,658,400	\$ 66.00	16,799,300	\$ 62.79	3,005,856	11.23	514,956	1.92	1,017,084
Turney Center Industrial Prison and Farm	1,092	\$ 23,031,900	\$ 57.78	21,900,200	\$ 54.95	3,541,230	8.88	429,870	1.08	1,006,735
Wayne County Boot Camp	405	\$ 9,408,100	\$ 63.64	9,085,900	\$ 61.46	1,431,009	9.68	163,528	1.11	166,700
West TN State Penitentiary	2,476	\$ 48,566,700	\$ 53.74	47,138,900	\$ 52.16	7,882,151	8.72	1,099,218	1.22	1,947,614
South Central Correctional Center	1,628	\$ 24,981,700	\$ 42.04	24,968,400	\$ 42.02	358,566	0.60		0.00	
Total Institutions	19,128	\$ 411,285,600	\$ 58.91	400,288,900	\$ 57.33	54,848,150	10.70	10,859,473	2.12	11,735,288
State Prosecutions Account	7,326	\$ 120,017,000	\$ 44.88	119,030,200	\$ 44.51					

POPULATION & CAPACITY



TENNESSEE DEPARTMENT OF CORRECTION

Incarceration Rates: Tennessee vs. Other States
(number incarcerated per 100,000 population)

State Incarceration Rates: June 30, 2005

Rank			Rank			Rank		
1	Louisiana	824	18	Tennessee	440	35	Kansas	329
2	Texas	703	19	Kentucky	432	36	New Mexico	327
3	Mississippi	682	20	South Dakota	430	37	New York	327
4	Oklahoma	655	21	Idaho	429	38	New Jersey	323
5	Alabama	587	22	Maryland	405	39	Iowa	289
6	South Carolina	538	23	Wyoming	398	40	West Virginia	287
7	Missouri	535	24	Ohio	392	41	Washington	263
8	Georgia	526	25	Indiana	386	42	Utah	240
9	Arizona	502	26	Wisconsin	383	43	Vermont	239
10	Florida	492	27	Connecticut	375	44	Nebraska	237
11	Michigan	484	28	Alaska	374	45	Massachusetts	236
12	Arkansas	480	29	Oregon	365	46	North Dakota	199
13	Nevada	478	30	North Carolina	361	47	New Hampshire	196
14	Delaware	478	31	Montana	360	48	Rhode Island	179
15	Virginia	471	32	Illinois	350	49	Minnesota	179
16	California	456	33	Pennsylvania	334	50	Maine	153
17	Colorado	447	34	Hawaii	334	Avg.	All States	433

Source: Prison and Jail Inmates at Midyear 2005, Bureau of Justice Statistics.

Note: The following jurisdictions have integrated prison and jail systems: Delaware, Vermont, Connecticut, Alaska, Hawaii, and Rhode Island. Rates exclude federal prisoners.

The most recent statistics, released in May 2006, indicate that Tennessee has the 18th highest incarceration rate in the country.

TDOC Institutional Capacity and Population Distribution

INSTITUTION	Total Beds Available	TDOC Operating Capacity	Assigned Count as of 6/29/2006	Population as a Percent of	
				Available Beds	Operating Capacity
GENERAL PURPOSE FACILITIES					
Hardeman County Correctional Center	2,016	1,976	1,994	98.9%	100.9%
Northeast Correctional Complex	1,856	1,819	1,834	98.8%	100.8%
Northwest Correctional Complex	2,425	2,377	2,319	95.6%	97.6%
South Central Correctional Center	1,676	1,642	1,657	98.9%	100.9%
Southeastern TN State Regional Corr. Facility	981	971	960	97.9%	98.9%
Turney Center Industrial Prison	1,136	1,113	1,105	97.3%	99.3%
Whiteville Correctional Facility	1,536	1,505	1,512	98.4%	100.5%
SUB-TOTAL	11,626	11,403	11,381	98.0%	99.8%
CLASSIFICATION FACILITIES					
Brushy Mountain Correctional Complex*	1,603	1,587	1,526	95.2%	96.2%
Charles Bass Correctional Complex	1,110	1,099	1,068	96.2%	97.2%
Tennessee Prison for Women	775	744	751	96.9%	100.9%
SUB-TOTAL	3,488	3,430	3,345	96.1%	98.1%
SPECIAL PURPOSE FACILITIES					
DeBerry Special Needs Facility	800	736	664	83.0%	90.2%
Mark Luttrell Correctional Center	440	436	407	92.5%	93.3%
Wayne County Boot Camp	450	446	415	92.2%	93.0%
SUB-TOTAL	1,690	1,618	1,486	89.2%	92.2%
HIGH SECURITY FACILITIES					
Riverbend Maximum Security Facility	736	714	702	95.4%	98.3%
West Tennessee State Penitentiary	2,582	2,505	2,515	97.4%	100.4%
SUB-TOTAL	3,318	3,219	3,217	96.4%	99.4%
TOTALS	20,122	19,670	19,429	94.9%	97.4%

Source: TDOC Population Overview Report.

*Brushy Mountain Correctional Complex and Morgan County Correctional Complex were separated on June 24, 2006. In order to maintain the integrity and interpretability of the data for this fiscal year, separate data for each institution will be shown in TDOC reports beginning July 1, 2006.

Operating Capacity vs. Felon Inmate Population Projections

Population Projections

The felon population projection numbers are produced for the Tennessee Department of Correction by JFA Associates in Washington D.C. 12-year projections are developed for the total felon population, as well as for the individual male and female felon populations.

Capacity

The operational capacity numbers, which reflect a realistic estimate of bed availability within each institution, is set at 98-99% of the total beds at each institution. All planned and funded TDOC building projects are included in the following capacity assumptions.

Fiscal Year End	Operating Capacity	Projected Population	Unmet Bed Demand
June 30, 2006	24,820	26,800	1,980
June 30, 2007	24,820	27,276	2,456
June 30, 2008	24,990	27,802	2,812
June 30, 2009	25,649	28,589	2,940
June 30, 2010	25,649	28,985	3,336
June 30, 2011	25,649	29,487	3,838
June 30, 2012	25,649	29,881	4,232
June 30, 2013	25,649	30,367	4,718
June 30, 2014	25,649	30,760	5,111
June 30, 2015	25,649	31,086	5,437
June 30, 2016	25,649	31,517	5,868
June 30, 2017	25,649	31,910	6,261

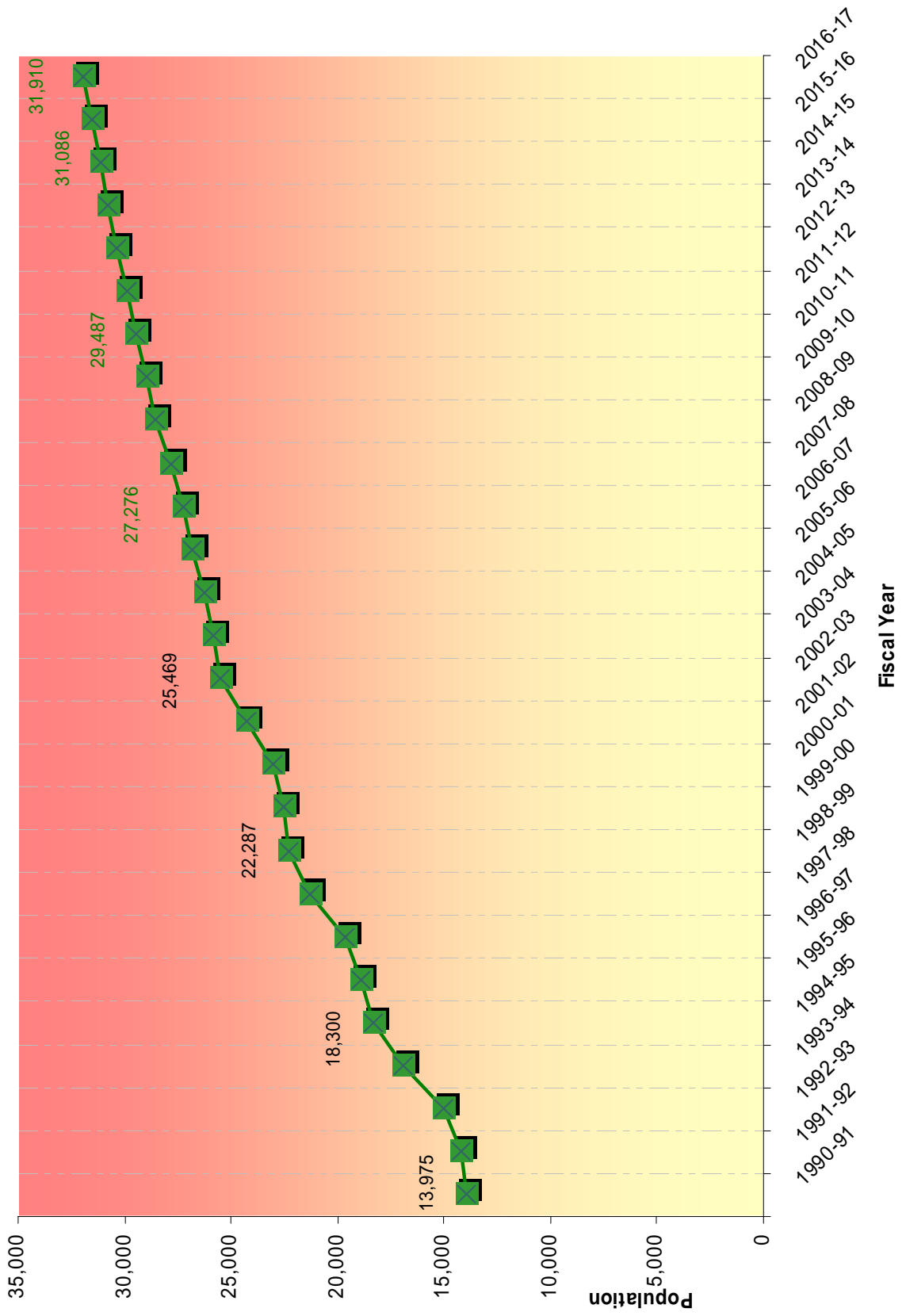
Source: 2006 Population Projection Report

Over the next 11 fiscal years (through June 2017), Tennessee's incarcerated population is projected to increase by a total of 17.0% (from 27,276 to 31,910). The operational capacity is expected to increase 3.3% during the same period (with the completion of the Morgan County expansion).

Unmet Bed Demand

Based on the current trends and TDOC expansion plans, the unmet bed demand (the number of incarcerated felons exceeding the number of beds) is currently projected to be 2,812 by June 2008. Even if the planned Morgan County expansion of approximately 830 operational beds is completed by June 2009, the unmet bed demand is still expected to be 4,232 in June 2012 and 6,261 by June 2017.

Figure 6. Total Felon Population (Historical and Projected), 1991 - 2017



Unmet Bed Demand by Sex

Male

Fiscal Year End	Operating Capacity	Projected Population	Unmet Bed Demand
June 30, 2006	23,104	24,725	1,621
June 30, 2007	23,104	25,128	2,024
June 30, 2008	23,274	25,578	2,304
June 30, 2009	23,933	26,261	2,328
June 30, 2010	23,933	26,643	2,710
June 30, 2011	23,933	27,123	3,190
June 30, 2012	23,933	27,462	3,529
June 30, 2013	23,933	27,878	3,945
June 30, 2014	23,933	28,278	4,345
June 30, 2015	23,933	28,601	4,668
June 30, 2016	23,933	29,051	5,118
June 30, 2017	23,933	29,400	5,467

Source: 2006 Population Projection Report

Female

Fiscal Year End	Operating Capacity	Projected Population	Unmet Bed Demand
June 30, 2006	1,716	2,075	359
June 30, 2007	1,716	2,148	432
June 30, 2008	1,716	2,224	508
June 30, 2009	1,716	2,328	612
June 30, 2010	1,716	2,342	626
June 30, 2011	1,716	2,364	648
June 30, 2012	1,716	2,419	703
June 30, 2013	1,716	2,489	773
June 30, 2014	1,716	2,482	766
June 30, 2015	1,716	2,485	769
June 30, 2016	1,716	2,466	750
June 30, 2017	1,716	2,510	794

Source: 2006 Population Projection Report

OFFENDER ACCOUNTABILITY



TENNESSEE DEPARTMENT OF CORRECTION

Introduction

Over the past several years, the Department of Correction has consistently placed a strong emphasis on offender accountability. TDOC collects fees for services such as telephone calls, copy machine use, postage, disciplinary actions, and frivolous lawsuits. In addition, the Department collects the following fees:

Reimbursement for Room and Board

Work release inmates must reimburse the Department for a portion of their room and board. Inmates adhere to a fee schedule of 35% of their weekly net pay, not to exceed \$12.50 per day. Certain minimum trusty inmates who participate in full-time educational release programs and work part time, making less than \$100 per week, pay 25% of their weekly net pay for room and board.

Supervision Fee

Inmates who are assigned to a work or educational release program pay a \$5 supervision fee each week. In addition, work release inmates are assessed a fee of \$14 a week for electronic monitoring.

Sick Call Fee

When inmates initiate medical, nursing, dental, or any other health service encounters, they are charged a fee of \$3 for a routine scheduled or non-scheduled encounter with health care staff. Fees are not assessed for any encounters required by policy or protocol or for follow-up care initiated by health care staff. However, health care is provided regardless of an inmate's ability to pay the co-pay charge.

Drug Test Fee

After a confirmation test, inmates assigned to a substance abuse treatment program who test positive on a drug or alcohol screen are required to incur the cost of the confirmation test. Inmates cited with a "refusal of a drug/alcohol screen" are assessed a fee of \$25.

Criminal Injuries Fee

Each inmate participating in work release programs, regardless of custody designation and participation in any other restitution program, must pay a monthly Criminal Injuries Fee Privilege Tax (\$26.50) levied for each offense for which the offender was convicted.

Community Service Restitution

All work release inmates must complete supervised, non-paid service at a public, non-profit site. Inmates are required to complete sixteen (16) hours of service for each year of their maximum sentence imposed. When community service restitution is not feasible, payments not to exceed \$30 per month must be paid to the Criminal Injuries Compensation Fund.

Court Cost Repayment

TDOC collects payments from an inmate trust fund account for court cost repayments ordered by the court.

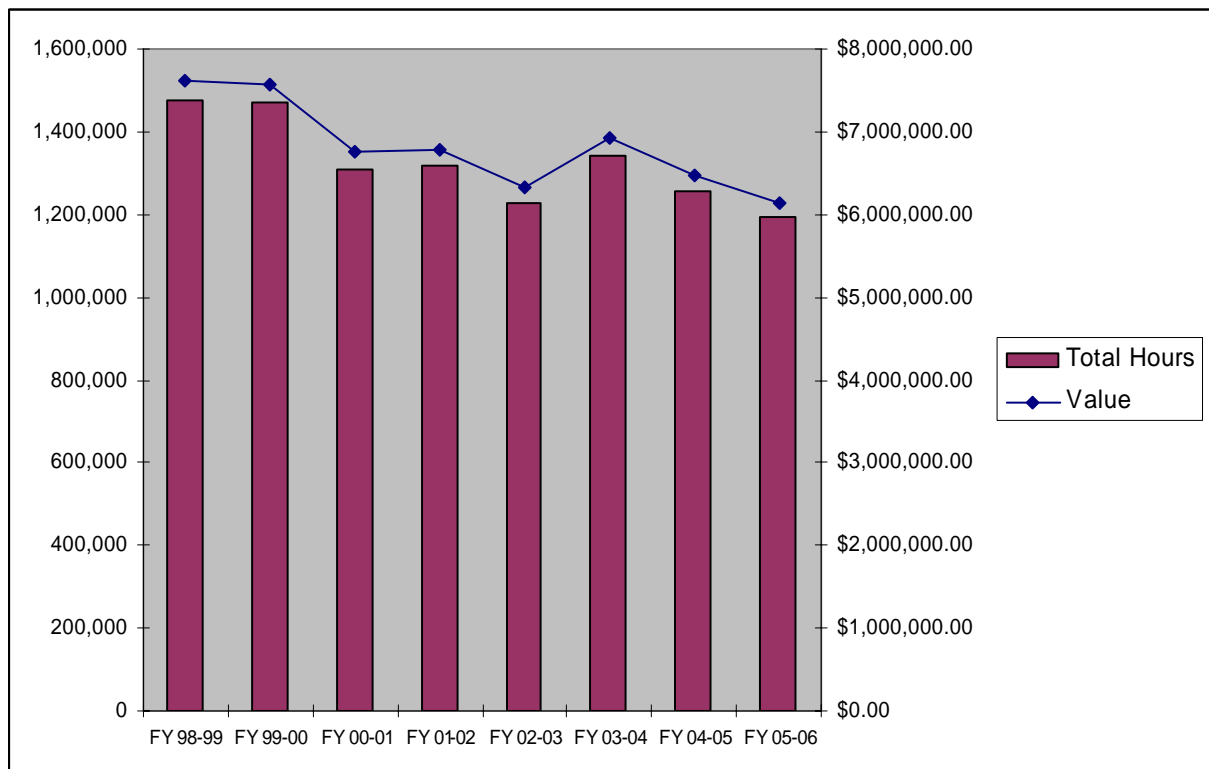
Community Service Work Crews

The Tennessee Department of Correction expects all inmates to work or attend school. One of the primary work venues for minimum security inmates is community service work. The Inmate Work Crew program allows offenders to contribute to the community in a positive way while at the same time enforcing a sense of pride. Approximately 900 inmates are assigned to work crews each month. Most say the program gives them a sense of pride. Since 1998, TDOC work crews have completed more than 10 million hours of community service for various state and local governments, as well as non-profit agencies across the state, with an estimated savings of over \$54 million (based on the minimum wage of \$5.15/hr.). However, the value of this service is much higher given that most of the labor performed by these work crews could not be hired out for minimum wage.

Although inmates are typically associated with roadside clean-up, they are involved in a variety of community service work including Meals on Wheels, state park maintenance, cemetery landscaping, and new construction of community buildings.

In addition to the services inmate work crews provide, they also save millions of taxpayer dollars each year. In FY 2005-2006 alone, community work crews performed almost 1.2 million hours of services, resulting in a savings of over \$6.1 million (based on a minimum wage of \$5.15/hr).

Total Hours and Estimated Value of Community Service Work: FY 1998-2006



Community Service Hours Worked by Facility: FY 2005-2006

	1st Quarter	2nd Quarter	3rd Quarter	4th Quarter	Facility Total
BMCX	56,536	52,199	50,978	57,184	216,897
CBCX	63,219	56,324	58,140	65,839	243,522
HCCF	5,114	2,094	2,700	5,053	14,961
MLCC	6,794	7,304	2,354	8,427	24,879
NECX	60,367	49,974	55,553	58,706	224,600
NWCX	19,743	15,349	20,268	21,379	76,739
SCCF	7,854	2,560	3,489	4,110	18,013
STSR	11,184	9,612	11,593	11,993	44,382
TPFW	40,867	39,532	43,335	42,902	166,636
TCIP	976	760	1,440	3,025	6,201
WCBC	36,511	35,682	34,583	39,380	146,156
WTSP	1,872	2,208	1,928	2,992	9,000
SYSTEM	311,037	273,598	286,361	320,990	1,191,986
TOTAL SAVINGS: Dollar Value @ Minimum Wage					\$6,138,727.90

Note: Minimum wage = \$5.15/hr.



Inmate Jobs

The Department of Correction is legislatively mandated to establish and assign inmates to the following programs:

- Academic and vocational education;
- Special needs programming;
- Jobs necessary for supporting the operations of the prisons;
- Jobs that provide services to the community.

All inmates in sufficient health shall be assigned to a program if available. Any inmate who refuses to participate in an assigned program can be issued a disciplinary infraction report.

Prison work combats idleness and thus helps maintain order. It develops fundamental work habits, often where such skills are lacking.

When coupled with academic and vocational training, work programs can provide an inmate the job skills that will help him/her find employment that pays a living wage upon release. The result can be a reduced recidivism rate.

Uniform procedures have been established for assigning inmates to programs for which he/she is paid and/or is evaluated for program sentence credits. Inmates are not permitted to refuse or quit an assignment, with the exception of those assigned to a Prison Industries Enhancement Program or to a mental health treatment program.

FY 2005-2006 Accomplishments

- Approximately 94% of all eligible inmates were assigned to activities.
- Established a new position type for behavioral programming, which includes therapeutic community and group therapy.
- Established 40 positions for Phase I and Phase II of the new Transition Center at the Tennessee Prison for Women.
- Established 90 positions for Phase I and Phase II of the new Transition Center at the Charles Bass Correctional Complex.
- Increased the number of pre-release positions by 105.
- Established 76 positions for participation in a new therapeutic community at the Turney Center Industrial Prison.

INMATE ASSIGNMENTS

June 30, 2006

Assignment	Inmates	% of Population
Academic Education	2,101	10.8%
Vocational Programs	1,820	9.4%
Support	5,182	26.7%
Program Services	1,139	5.9%
TRICOR	768	4.0%
Work Lines	467	2.4%
Other Agencies	117	0.6%
Community Service	646	3.3%
Work Release	93	0.5%
Mental Health Programs	764	3.9%
Boot Camp	77	0.4%
Pre-Release	473	2.4%
Other	1,281	6.6%
Total Assigned	15,335	79.1%
Unassignable Status*	2,950	15.2%
Job Waiting List	1,108	5.7%
TOTAL INMATES	19,393	100%
% of Eligible Inmates Assigned	NA	93.3%

*Inmates who cannot be assigned due to their status, including segregation or pending classification, etc.

Job Initiatives

TRICOR

In 1994, the General Assembly created TRICOR (Tennessee Rehabilitative Initiative in Correction). TRICOR is responsible for developing inmate jobs in the following areas:

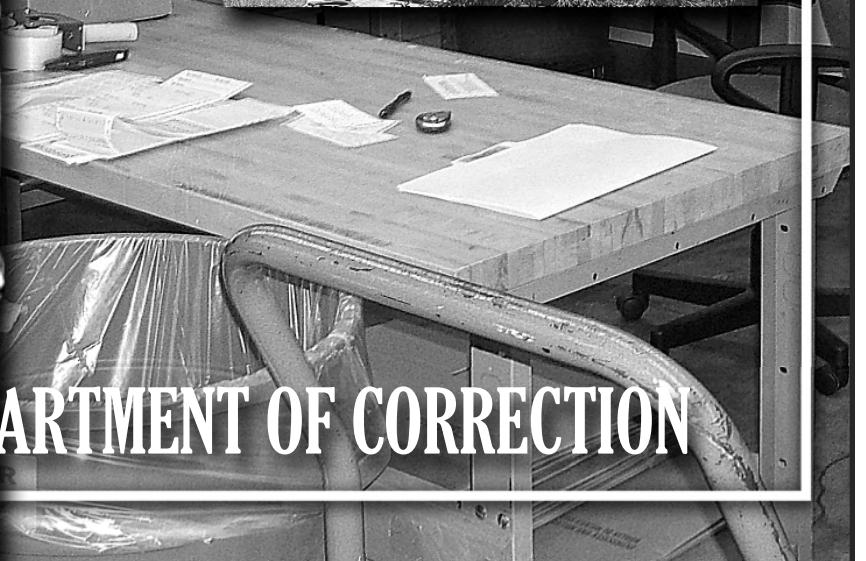
- Manufacturing
- Business services
- Agricultural

Overall, TRICOR offers more than 300 goods and services while providing jobs for approximately 840 inmates. It fully funds itself and even generates revenue for the state. Each year the program saves Tennessee taxpayers an estimated \$3 million dollars in operational costs.

PIE

The Prison Industries Enhancement certification program (PIE) is designed to place inmates in a realistic work environment, pay them prevailing local wage for similar work, and enable them to acquire marketable skills to increase their potential for successful rehabilitation and meaningful employment upon release.

OFFENDER TRENDS

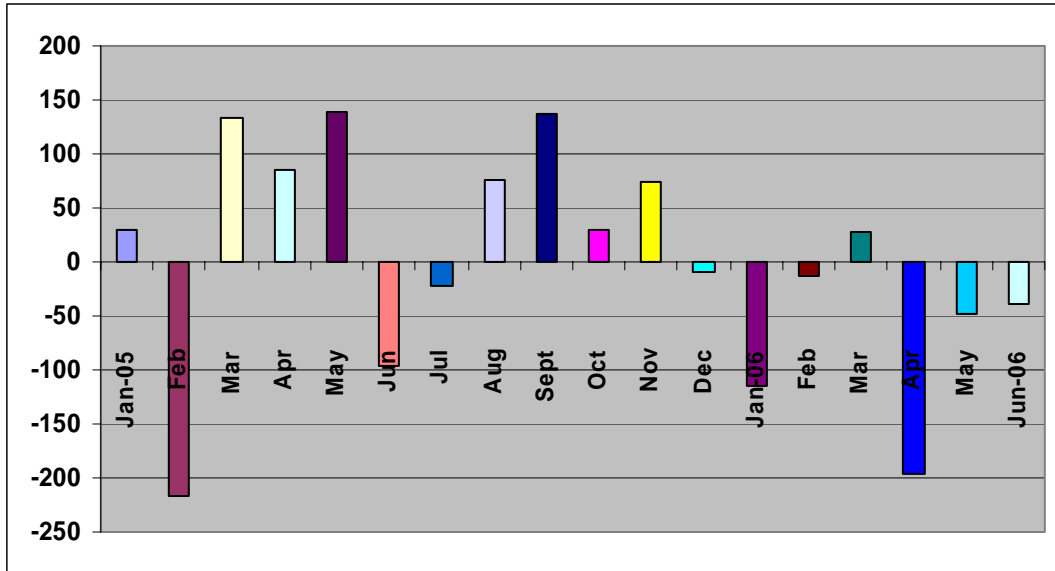


TENNESSEE DEPARTMENT OF CORRECTION

Tennessee Offender Population: June 2006

TDOC Facilities (In-house)	19,429
Probation	41,763
Intensive Supervision Probation (ISP)	967
Community Correction Grant Programs	6,396
Local Jails	6,681
Total Felons	75,236
Source: Tennessee Felon Population Update	

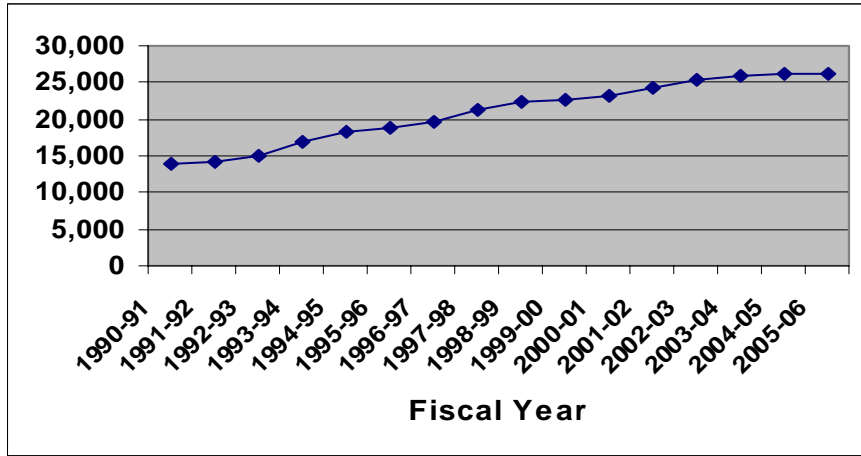
Change in Month-End Inmate Population January 2005-June 2006



Source: Tennessee Felon Population Update

The felon population fluctuated considerably during the 18-month period, with the monthly changes ranging from +139 to -216. The population increased for nine (9) of the months and decreased for the other nine (9) months.

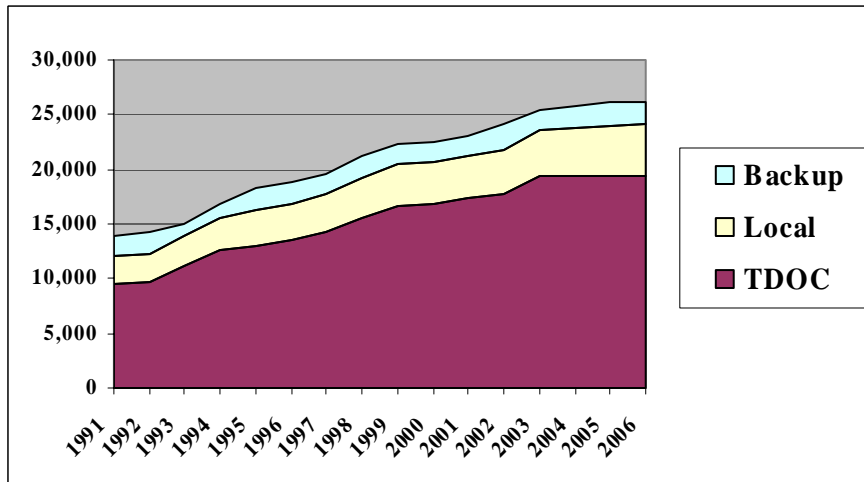
Fiscal Year End Inmate Population Trends: 1991-2006



Over the past 16 fiscal years (1991-2006), the incarcerated felon population (including TDOC backup and locally sentenced felons) has increased 86.8% (from 13,975 to 26,110).

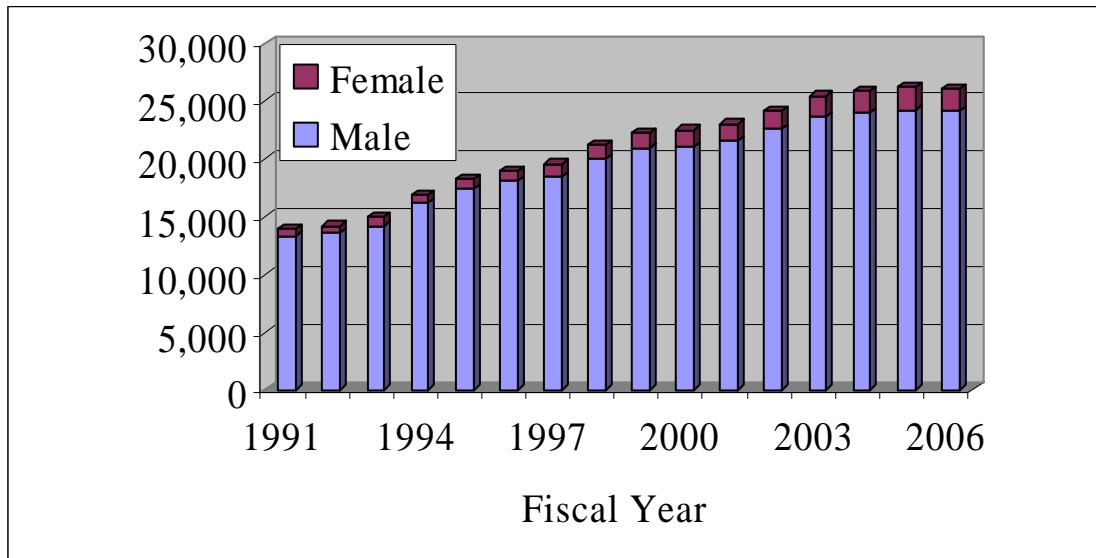
During the past fiscal year, the total incarcerated felon population decreased from 26,187 in July 2005 to 26,110 in June 2006, a decrease of 0.3%. This represents the first decrease in the felon population in the past 16 fiscal years.

Annual Fiscal Year-End Incarcerated Felon Population: FY 1991-2006



TDOC in-house population has increased 105.5% during the past 15 years (from 9,454 to 19,429). TDOC backup, although fluctuating over the last 15 years, was only 2.6% higher in FY 2005-2006 than in FY 1990-1991 (from 1,826 to 1,874) while locally sentenced felons have increased 78.4% during the same time period (from 2,695 to 4,807).

Total Inmate Population: FY 1991-2006



The male felon population (including TDOC backup and locally sentenced felons) increased 81.0% over the past 16 years, representing a mean annual change of 4.9%. During this same period, the total female felon population grew 212.7%, with a mean annual change of 8.5%.

Over the next 11 years (FY07-FY17), the total felon population (including TDOC backup and locally sentenced felons) is projected to increase by 17.0%. The male felon population is expected to grow 17.0%, and the female felon population is expected to increase 16.9%.

Local Jail Census: FY 2005-2006

Total Jail Population	JULY	AUG	SEPT	OCT	NOV	DEC	JAN	FEB	MAR	APR	MAY	JUNE
	24,024	24,422	24,876	24,666	24,002	23,008	23,450	23,532	23,613	23,872	23,769	24,402
TDOC Backup	2,300	2,302	2,401	2,473	2,478	2,498	2,448	2,306	2,303	2,195	1,934	1,874
Local Felons	4,418	4,526	4,576	4,603	4,591	4,614	4,534	4,706	4,688	4,623	4,795	4,807
Other Convicted Felons	618	437	583	552	467	472	559	462	555	468	520	481
Convicted Misdemeanants	5,492	5,689	5,853	5,788	5,535	5,312	5,197	5,287	5,560	5,580	5,203	5,679
Others	937	861	822	593	936	859	830	845	702	963	812	759
Pre-trial Detainees												
Felony	7,183	7,414	7,355	7,656	7,085	6,515	6,887	6,892	6,989	7,055	7,424	7,701
Misdemeanant	3,076	3,193	3,286	3,001	2,910	2,738	2,995	3,034	2,816	2,988	3,081	3,101
Percentage of Jail Population												
	JULY	AUG	SEPT	OCT	NOV	DEC	JAN	FEB	MAR	APR	MAY	JUNE
TDOC Backup	9.6%	9.4%	9.7%	10.0%	10.3%	10.9%	10.4%	9.8%	9.8%	9.2%	8.1%	7.7%
Local Felons	18.4%	18.5%	18.4%	18.7%	19.1%	20.1%	19.3%	20.0%	19.9%	19.4%	20.2%	19.7%
Other Convicted Felons	2.6%	1.8%	2.3%	2.2%	1.9%	2.1%	2.4%	2.0%	2.4%	2.0%	2.2%	2.0%
Convicted Misdemeanants	22.9%	23.3%	23.5%	23.5%	23.1%	23.1%	22.2%	22.5%	23.5%	23.4%	21.9%	23.3%
Others	3.9%	3.5%	3.3%	2.4%	3.9%	3.7%	3.5%	3.6%	3.0%	4.0%	3.4%	3.1%
Pre-trial Detainees												
Felony	29.9%	30.4%	29.6%	31.0%	29.5%	28.3%	29.4%	29.3%	29.6%	29.6%	31.2%	31.6%
Misdemeanant	12.8%	13.1%	13.2%	12.2%	12.1%	11.9%	12.8%	12.9%	11.9%	12.5%	13.0%	12.7%

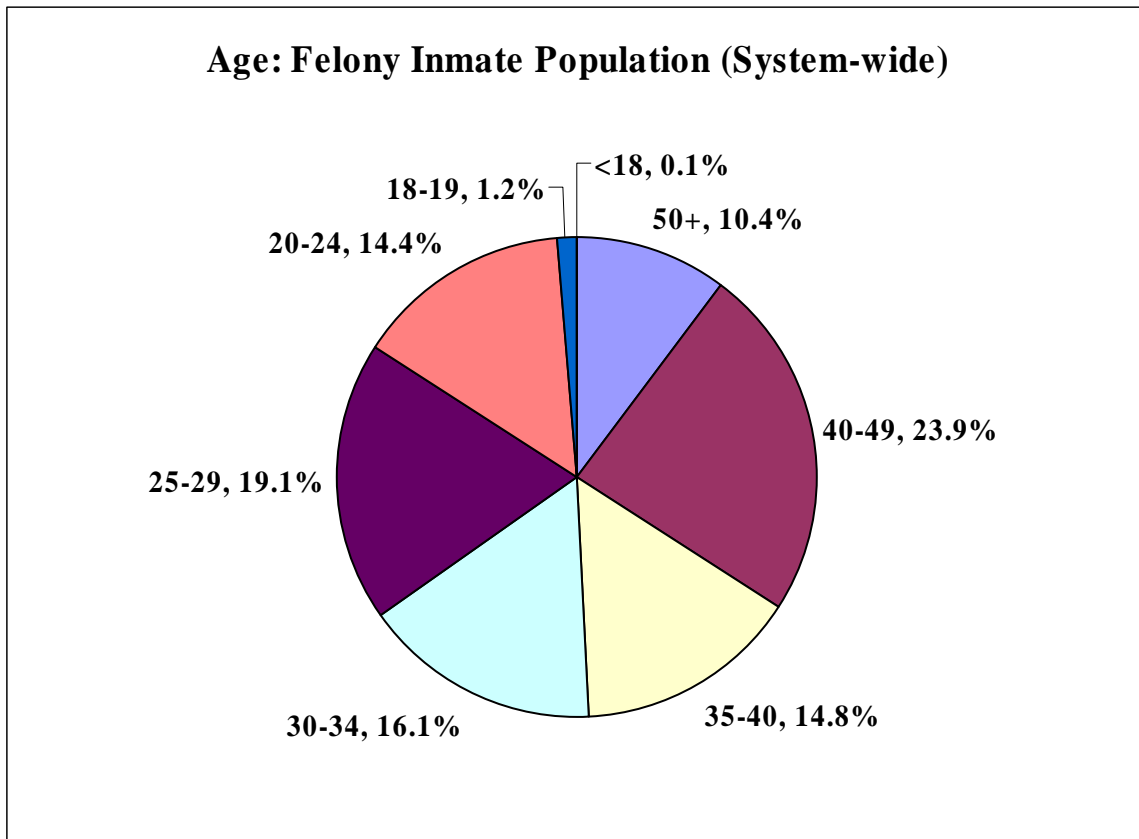
Source: TDOC Jail Summary Reports

Felony Inmate Demographics: Age, Sex, and Race

Felony Inmate Population by Age: June 30, 2006

	TDOC INHOUSE	%	TDOC BACKUP	%	LOCAL FELON	%	SYSTEM- WIDE	%
50+	2,254	11.8%	277	7.0%	273	6.9%	2,804	10.4%
40-49	4,682	24.6%	849	21.4%	918	23.1%	6,449	23.9%
35-39	2,947	15.5%	566	14.3%	492	12.4%	4,005	14.8%
30-34	3,118	16.4%	629	15.9%	588	14.8%	4,335	16.1%
25-29	3,588	18.8%	797	20.1%	783	19.7%	5,168	19.1%
20-24	2,326	12.2%	745	18.8%	819	20.6%	3,890	14.4%
18-19	131	0.7%	88	2.2%	101	2.5%	320	1.2%
<18	15	0.1%	8	0.2%	9	0.2%	32	0.1%
TOTAL	19,061		3,959		3,983		27,003	

Source: Tennessee Offender Management Information System

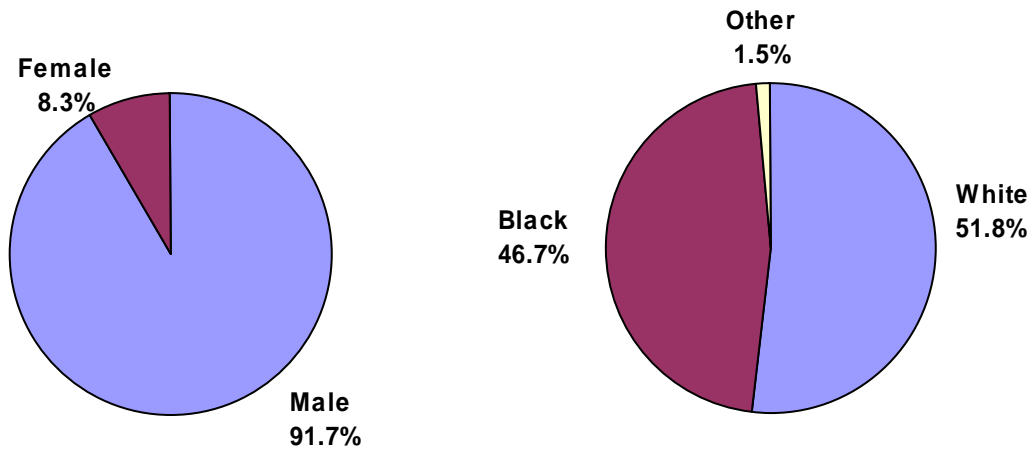


Felony Inmate Population by Sex, Race, and Location June 30, 2006

	TDOC	%	Backup	%	Local	%	System Wide
Male							
Black	8,242	46.2%	1,437	43.8%	2,243	63.1%	11,922
White	9,341	52.4%	1,785	54.5%	1,252	35.2%	12,378
Other	244	1.4%	56	1.7%	60	1.7%	360
Total Male	17,827	100.0%	3,278	100.0%	3,555	100.0%	24,660
Female							
Black	336	29.6%	131	19.2%	188	43.9%	655
White	776	68.4%	541	79.4%	238	55.6%	1555
Other	22	1.9%	9	1.3%	2	0.5%	33
Total Female	1,134	100.0%	681	100.0%	428	100.0%	2,243
TOTAL	18,961		3,959		3,983		26,903

Source: Tennessee Offender Management Information System

System-wide Felon Population: June 30, 2006

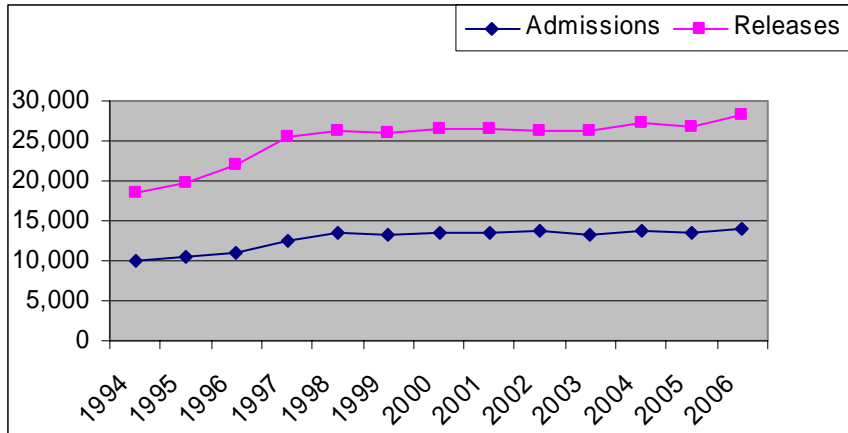


Felony Inmate Population: Average Total Sentence Length by Primary Offense: FY 2005-2006

	TDOC INHOUSE			TDOC BACKUP			LOCALLY SENTENCED			SYSTEMWIDE		
	NUMBER OF OFFENDERS	% OF TDOC INHOUSE	AVERAGE SENTENCE (YY/MM)	NUMBER OF OFFENDERS	% OF TDOC BACKUP	AVERAGE SENTENCE (YY/MM)	NUMBER OF OFFENDERS	% OF LOCALLY SENTENCED	AVERAGE SENTENCE (YY/MM)	NUMBER OF OFFENDERS	% OF SYSTEMWIDE	AVERAGE SENTENCE (YY/MM)
PERSON												
Homicide	3,548	18.61%	15/00	57	1.44%	16/02	31	0.78%	04/07	3,636	13.47%	15/01
Murder	15	0.08%	05/07	14	0.35%	02/02	10	0.25%	02/11	39	0.14%	04/06
Negligent Manslaughter	230	1.21%	22/01	16	0.40%	07/03	14	0.35%	05/01	260	0.96%	20/07
Kidnapping	2,733	14.34%	22/07	145	3.66%	08/04	103	2.59%	02/11	2,981	11.04%	21/05
Sex Offenses	70	0.37%	08/08	34	0.86%	02/02	21	0.53%	01/10	125	0.46%	05/09
Forcible Non-Forcible	2,151	11.28%	15/00	358	9.04%	04/10	503	12.63%	02/11	3,012	11.15%	12/03
Assault	33	0.17%	05/05	34	0.86%	01/10	38	0.95%	01/05	105	0.39%	02/07
Aggravated Assault	124	0.65%	14/06	19	0.48%	06/09	26	0.65%	01/09	169	0.63%	12/07
Simple Assault	1,890	9.92%	09/08	567	14.32%	04/06	670	16.82%	02/08	3,127	11.58%	07/03
Arson	328	1.72%	07/02	261	6.59%	02/09	165	4.14%	01/06	754	2.79%	04/05
Burglary	832	4.36%	07/03	374	9.45%	03/04	434	10.90%	02/06	1,640	6.07%	05/00
Forgery/Fraud	2,508	13.16%	18/06	373	9.42%	10/02	67	1.68%	04/02	2,948	10.92%	16/10
Larceny/Theft	544	2.85%	09/05	122	3.08%	05/04	156	3.92%	03/05	822	3.04%	08/00
Robbery	2,005	10.52%	11/10	568	14.35%	06/05	669	16.80%	02/07	3,242	12.01%	09/01
Aggravated Robbery	923	4.84%	09/00	458	11.57%	03/08	459	11.52%	02/00	1,840	6.81%	05/08
All Other Robbery	163	0.86%	15/03	19	0.48%	08/03	18	0.45%	01/02	200	0.74%	12/07
Drug Offenses	73	0.38%	05/03	70	1.77%	02/02	116	2.91%	00/08	259	0.96%	02/00
Cocaine	225	1.18%	20/03	10	0.25%	07/10	6	0.15%	01/08	241	0.89%	18/06
Other Drug Offenses	64	0.34%	09/02	34	0.86%	03/11	48	1.21%	02/08	146	1.00%	05/08
Vehicular	89	0.47%	11/10	59	1.49%	02/11	80	2.01%	01/09	228	0.84%	06/03
Vehicular Homicide/DUI	20	0.10%	09/11	4	0.10%	04/03	6	0.15%	02/08	30	0.11%	06/06
All Other Vehicular	493	2.59%	05/11	363	9.17%	02/07	343	8.61%	01/07	1,199	4.44%	03/11
OTHER												
C/S/F Person	19,061	100%	14/07	3,959	100%	05/01	3,983	100%	02/05	27,003	100.00%	11/06
C/S/F Property	100	0.37%	00/00	0	0.00%	00/00	0	0.00%	00/00	100	0.37%	00/00
C/S/F Societal/Drugs	1,963	7.27%	00/00	8	0.20%	00/00	0	0.00%	00/00	1,971	7.30%	00/00
Escape	2,903	10.75%	21/02	91	2.30%	13/01	13	0.33%	03/09	3,007	11.14%	20/07
All Other	259	0.96%	01/11	512	12.93%	01/09	767	19.26%	01/07	1,538	5.70%	01/09
TOTAL												
Sentence Type												
Death	100	0.37%	00/00	0	0.00%	00/00	0	0.00%	00/00	100	0.37%	00/00
Life	1,963	7.27%	00/00	8	0.20%	00/00	0	0.00%	00/00	1,971	7.30%	00/00
85%	2,903	10.75%	21/02	91	2.30%	13/01	13	0.33%	03/09	3,007	11.14%	20/07
1-2 Years	259	0.96%	01/11	512	12.93%	01/09	767	19.26%	01/07	1,538	5.70%	01/09

Admissions and Releases

Yearly Admissions and Releases: Fiscal Years 1994-2006



Felony Admissions by Type: FY 2005-2006

TYPE	TDOC	%	LOCAL	%	SYSTEM-WIDE	%
Returned Escape & Others	814	8.0%	153	4.1%	967	7.0%
Parole & Probation Violators	3,624	35.6%	1,158	31.2%	4,782	34.4%
New Commitments	5,742	56.4%	2,401	64.7%	8,143	58.6%
TOTAL	10,180	100.0%	3,712	100.0%	13,892	100.0%

Felony Releases by Type: FY 2005-2006

TYPE	TDOC	%	BACK-UP	%	LOCAL	%	UNKNOWN	%	SYSTEM-WIDE	%
Parole	3,145	50.9%	564	13.0%	279	7.5%	0	0.0%	3,988	27.9%
Probation/Community Corrections	778	12.6%	2,460	56.8%	1,860	50.2%	21	29.6%	5,119	35.8%
Sentence Expiration	2,152	34.8%	1,169	27.0%	1,544	41.7%	49	69.0%	4,914	34.4%
Death	70	1.1%	2	0.0%	1	0.0%	0	0.0%	73	0.5%
Other	34	0.6%	139	3.2%	21	0.6%	1	1.4%	195	1.4%
TOTAL	6,179		4,334		3,705		71		14,289	

*Note: Unknown includes offenders without a valid judgment order where the appropriate category is unknown.

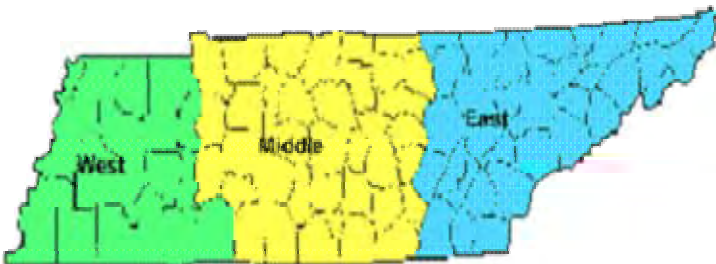
Felony Admissions by Age, Race, and Sex: FY 2005-2006

AGE	TDOC	%	LOCAL	%	SYSTEM-WIDE	%
50+	625	6.1%	229	6.2%	854	6.1%
40-49	2,199	21.6%	905	24.4%	3,104	22.3%
35-39	1,499	14.7%	483	13.0%	1,982	14.3%
30-34	1,664	16.3%	559	15.1%	2,223	16.0%
25-29	2,093	20.6%	718	19.3%	2,811	20.2%
20-24	1,885	18.5%	723	19.5%	2,608	18.8%
18-19	199	2.0%	90	2.4%	289	2.1%
<18	16	0.2%	5	0.1%	21	0.2%
TOTAL	10,180		3,712		13,892	

RACE	TDOC	%	LOCAL	%	SYSTEM-WIDE	%
Black	3,768	37.0%	2,626	70.7%	6,394	46.0%
White	6,233	61.2%	1,029	27.7%	7,262	52.3%
Other	179	1.8%	57	1.5%	236	1.7%
TOTAL	10,180		3,712		13,892	

SEX	TDOC	%	LOCAL	%	SYSTEM-WIDE	%
Male	8,711	85.6%	3,259	87.8%	11,970	86.2%
Female	1,469	14.4%	453	12.2%	1,922	13.8%
TOTAL	10,180		3,712		13,892	

Felony Admissions by Geographical Region: FY 2005-2006



	TDOC	Local Felon	System-wide
West	2,326	2,128	4,454
Middle	3,936	1,415	5,351
East	3,580	239	3,819

Admissions by County of Conviction: FY 2005-2006

COUNTY	TDOC		LOCAL		SYSTEMWIDE		COUNTY	TDOC		LOCAL		SYSTEMWIDE	
	Number	%	Number	%	Number	%		Number	%	Number	%	Number	%
ANDERSON	76	0.7%	1	0.0%	77	0.6%	LAUDERDALE	99	1.0%	3	0.1%	102	0.7%
BEDFORD	124	1.2%	0	0.0%	124	0.9%	LAWRENCE	81	0.8%	2	0.1%	83	0.6%
BENTON	27	0.3%	0	0.0%	27	0.2%	LEWIS	25	0.2%	2	0.1%	27	0.2%
BLEDSOE	8	0.1%	0	0.0%	8	0.1%	LINCOLN	30	0.3%	1	0.0%	31	0.2%
BLOUNT	154	1.5%	7	0.2%	161	1.2%	LOUDON	15	0.1%	0	0.0%	15	0.1%
BRADLEY	168	1.7%	6	0.2%	174	1.3%	McMINN	113	1.1%	4	0.1%	117	0.8%
CAMPBELL	93	0.9%	8	0.2%	101	0.7%	McNAIRY	41	0.4%	0	0.0%	41	0.3%
CANNON	32	0.3%	0	0.0%	32	0.2%	MACON	28	0.3%	1	0.0%	29	0.2%
CARROLL	37	0.4%	2	0.1%	39	0.3%	MADISON	371	3.6%	13	0.4%	384	2.8%
CARTER	133	1.3%	8	0.2%	141	1.0%	MARION	37	0.4%	0	0.0%	37	0.3%
CHEATHAM	63	0.6%	2	0.1%	65	0.5%	MASHALL	122	1.2%	2	0.1%	124	0.9%
CHESTER	42	0.4%	2	0.1%	44	0.3%	MAURY	117	1.1%	4	0.1%	121	0.9%
CLAIBORNE	32	0.3%	3	0.1%	35	0.3%	MEIGS	6	0.1%	2	0.1%	8	0.1%
CLAY	19	0.2%	0	0.0%	19	0.1%	MONROE	81	0.8%	4	0.1%	85	0.6%
COCKE	65	0.6%	4	0.1%	69	0.5%	MONTGOMERY	115	1.1%	11	0.3%	126	0.9%
COFFEE	169	1.7%	13	0.4%	182	1.3%	MOORE	13	0.1%	1	0.0%	14	0.1%
CROCKETT	32	0.3%	1	0.0%	33	0.2%	MORGAN	12	0.1%	0	0.0%	12	0.1%
CUMBERLAND	93	0.9%	2	0.1%	95	0.7%	OBION	92	0.9%	4	0.1%	96	0.7%
DAVIDSON	1,048	10.3%	1,149	31.0%	2197	15.8%	OVERTON	36	0.4%	1	0.0%	37	0.3%
DECATUR	9	0.1%	0	0.0%	9	0.1%	PERRY	18	0.2%	0	0.0%	18	0.1%
DEKALB	23	0.2%	3	0.1%	26	0.2%	PICKETT	7	0.1%	0	0.0%	7	0.1%
DICKSON	77	0.8%	7	0.2%	84	0.6%	POLK	35	0.3%	0	0.0%	35	0.3%
DYER	113	1.1%	4	0.1%	117	0.8%	PUTNAM	95	0.9%	7	0.2%	102	0.7%
FAYETTE	81	0.8%	4	0.1%	85	0.6%	RHEA	19	0.2%	4	0.1%	23	0.2%
FENTRESS	61	0.6%	4	0.1%	65	0.5%	ROANE	24	0.2%	1	0.0%	25	0.2%
FRANKLIN	85	0.8%	4	0.1%	89	0.6%	ROBERTSON	83	0.8%	5	0.1%	88	0.6%
GIBSON	85	0.8%	0	0.0%	85	0.6%	RUTHERFORD	432	4.2%	33	0.9%	465	3.3%
GILES	56	0.6%	4	0.1%	60	0.4%	SCOTT	25	0.2%	1	0.0%	26	0.2%
GRAINGER	25	0.2%	0	0.0%	25	0.2%	SEQUATCHIE	18	0.2%	1	0.0%	19	0.1%
GREENE	98	1.0%	66	1.8%	164	1.2%	SEVIER	114	1.1%	4	0.1%	118	0.8%
GRUNDY	23	0.2%	0	0.0%	23	0.2%	SHELBY	791	7.8%	2,090	56.3%	2881	20.7%
HAMBLEN	137	1.3%	92	2.5%	229	1.6%	SMITH	28	0.3%	0	0.0%	28	0.2%
HAMILTON	452	4.4%	10	0.3%	462	3.3%	STEWART	7	0.1%	0	0.0%	7	0.1%
HANCOCK	26	0.3%	17	0.5%	43	0.3%	SULLIVAN	497	4.9%	7	0.2%	504	3.6%
HARDEMAN	59	0.6%	4	0.1%	63	0.5%	SUMNER	189	1.9%	6	0.2%	195	1.4%
HARDIN	41	0.4%	1	0.0%	42	0.3%	TIPTON	111	1.1%	5	0.1%	116	0.8%
HAWKINS	155	1.5%	1	0.0%	156	1.1%	TROUSDALE	24	0.2%	0	0.0%	24	0.2%
HAYWOOD	32	0.3%	0	0.0%	32	0.2%	UNICOI	36	0.4%	2	0.1%	38	0.3%
HENDERSON	76	0.7%	1	0.0%	77	0.6%	UNION	42	0.4%	2	0.1%	44	0.3%
HENRY	52	0.5%	8	0.2%	60	0.4%	VAN BUREN	10	0.1%	1	0.0%	11	0.1%
HICKMAN	52	0.5%	1	0.0%	53	0.4%	WARREN	73	0.7%	4	0.1%	77	0.6%
HOUSTON	1	0.0%	0	0.0%	1	0.0%	WASHINGTON	241	2.4%	7	0.2%	248	1.8%
HUMPHREYS	37	0.4%	1	0.0%	38	0.3%	WAYNE	55	0.5%	2	0.1%	57	0.4%
JACKSON	21	0.2%	1	0.0%	22	0.2%	WEAKLEY	38	0.4%	3	0.1%	41	0.3%
JEFFERSON	62	0.6%	5	0.1%	67	0.5%	WHITE	44	0.4%	0	0.0%	44	0.3%
JOHNSON	37	0.4%	2	0.1%	39	0.3%	WILLIAMSON	208	2.0%	13	0.4%	221	1.6%
KNOX	920	9.0%	8	0.2%	928	6.7%	WILSON	133	1.3%	1	0.0%	134	1.0%
LAKE	38	0.4%	2	0.1%	40	0.3%							
							TOTAL	10,180		3,712		13,892	

Felony Admissions Average Sentence Length by Primary Offense Group: FY 2005-2006

PRIMARY OFFENSE	TDOC SENTENCED			LOCALLY SENTENCED			SYSTEM-WIDE			
	Number of Offenders	% Of TDOC	Ave Sentence (YY/MM)	Number of Offenders	% Of Local	Ave Sentence (YY/MM)	System-wide Total	% Of System Total	Ave Sentence (YY/MM)	
PERSON	Homicide	313	3.07%	28/04	22	0.59%	04/04	335	2.41%	26/08
	Murder	13	0.13%	03/06	15	0.40%	03/00	28	0.20%	03/03
	Negligent Manslaughter	41	0.40%	10/01	12	0.32%	04/00	53	0.38%	08/09
	Kidnapping									
	Sex Offenses									
	Forcible	353	3.47%	12/08	56	1.50%	03/08	409	2.94%	11/05
	Non-Forcible	114	1.12%	08/10	30	0.80%	01/05	144	1.04%	02/06
	Assault									
	Aggravated Assault	892	8.76%	07/01	408	10.94%	03/05	1,300	9.36%	06/00
	Simple Assault	92	1.00%	02/04	63	1.69%	01/08	155	1.12%	02/01
PROPERTY	Arson	56	0.55%	07/08	10	0.27%	04/10	66	0.48%	07/03
	Burglary	1,536	15.09%	05/08	681	18.27%	03/00	2,217	15.96%	04/10
	Forgery/Fraud	630	6.19%	03/06	200	5.36%	02/04	830	5.97%	03/03
	Larceny/Theft	1,055	10.36%	04/02	555	14.89%	02/07	1,610	11.59%	03/07
	Robbery									
	Aggravated Robbery	730	7.17%	13/09	43	1.15%	05/04	773	5.56%	13/04
	All Other Robbery	362	3.56%	07/02	122	3.27%	05/04	484	3.48%	06/06
	Drug Offenses									
	Cocaine	1,531	15.04%	08/03	477	12.80%	04/02	2,008	14.45%	07/03
	Other Drug Offenses	1,165	11.44%	05/00	376	10.09%	03/04	1,541	11.09%	04/07
SOCIAL	Vehicular									
	Vehicular Homicide/DUI	48	0.47%	10/03	2	0.05%	04/07	50	0.36%	10/01
	All Other Vehicular	174	1.71%	02/03	44	1.18%	01/08	218	1.57%	02/01
	C/S/F Person	44	0.43%	16/04	6	0.16%	03/02	50	0.36%	14/09
	C/S/F Property	84	0.83%	04/02	67	1.80%	03/04	151	1.09%	03/10
	C/S/F Societal/Drugs	127	1.25%	04/07	140	3.76%	02/04	267	1.92%	03/05
	Escape	14	0.14%	03/11	8	0.21%	02/05	22	0.16%	03/05
	All Other	806	7.92%	02/11	375	10.06%	02/01	1,181	8.50%	02/08
	TOTAL	10,180	100.00%	07/10	3,728	100.00%	03/01	13,892	100.00%	06/00
	OTHER	Sentence Type								
Death		1	0.01%	N/A	0	0.00%	0	1	0.01%	N/A
*Life		117	1.15%	45/00	0	0.00%	0	117	0.84%	45/00
85%		347	3.41%	17/11	0	0.00%	0	347	2.50%	17/11
1-2 Years	2,340	22.99%	01/09	1,741	46.70%	01/08	4,081	29.38%	01/09	

*For purposes of calculating sentences we assign life offenders 45 years.

Felony Releases by Age, Race, and Sex: FY 2005-2006

AGE	TDOC	%	BACKUP	%	LOCAL	%	UNKNOWN	%	SYSTEM-WIDE	%
50+	563	9.1%	251	5.8%	236	6.4%	8	11.3%	1,058	7.4%
40-49	1,450	23.5%	900	20.8%	883	23.8%	21	29.6%	3,254	22.8%
35-39	973	15.7%	601	13.9%	509	13.7%	7	9.9%	2,090	14.6%
30-34	1,093	17.7%	720	16.6%	575	15.5%	14	19.7%	2,402	16.8%
25-29	1,316	21.3%	933	21.5%	710	19.2%	8	11.3%	2,967	20.8%
20-24	754	12.2%	858	19.8%	739	19.9%	12	16.9%	2,363	16.5%
18-19	29	0.5%	69	1.6%	50	1.3%	1	1.4%	149	1.0%
<18	1	0.0%	2	0.0%	2	0.1%	0	0.0%	5	0.0%
Unknown	0	0.0%	0	0.0%	1	0.0%	0	0.0%	1	0.0%
TOTAL	6,179		4,334		3,705		71		14,289	

RACE	TDOC	%	BACK-UP	%	LOCAL	%	UNKNOWN	%	SYSTEM-WIDE	%
Black	2,626	42.5%	1,399	32.3%	2,612	70.5%	28	39.4%	6,665	46.6%
White	3,447	55.8%	2,865	66.1%	1,037	28.0%	39	54.9%	7,388	51.7%
Other	106	1.7%	70	1.6%	56	1.5%	4	5.6%	236	1.7%
TOTAL	6,179		4,334		3,705		71		14,289	

SEX	TDOC	%	BACK-UP	%	LOCAL	%	UNKNOWN	%	SYSTEM-WIDE	%
Male	5,617	90.9%	3,475	80.2%	3,241	87.5%	56	78.9%	12,389	86.7%
Female	562	9.1%	859	19.8%	464	12.5%	15	21.1%	1,900	13.3%
TOTAL	6,179		4,334		3,705		71		14,289	

Felony Releases Average Time Served by Release Type: FY 2005-2006

PRIMARY OFFENSE GROUP	PAROLE			EXPIRATION & OTHERS			PROBATION/COMMUNITY CORRECTIONS			SYSTEM-WIDE			
	Number of Offenders	%	Average Time Served (YY/MM)	Number of Offenders	%	Average Time Served (YY/MM)	Number of Offenders	%	Average Time Served (YY/MM)	Number of Offenders	%	Average Time Served (YY/MM)	
PERSON	Homicide												
	Murder	158	3.96%	16/10	147	2.87%	11/06	10	0.20%	04/00	315	2.22%	14/00
	Negligent Manslaughter	1	0.03%	04/08	5	0.10%	02/00	13	0.26%	01/01	19	0.13%	01/07
	Kidnapping	26	0.65%	14/06	32	0.62%	07/09	11	0.22%	03/05	69	0.49%	09/07
	Sex Offenses												
	Forcible	95	2.38%	07/01	220	4.29%	10/01	73	1.43%	02/03	388	2.73%	07/11
	Non-Forcible	2	0.05%	02/07	56	1.09%	02/09	82	1.61%	01/05	140	0.99%	02/00
	Assault												
	Aggravated Assault	333	8.35%	07/00	651	12.70%	04/09	354	6.95%	01/11	1,338	9.42%	04/07
	Simple Assault	9	0.23%	03/06	67	1.31%	02/10	106	2.08%	01/04	182	1.28%	02/00
PROPERTY	Arson												
	Burglary	24	0.60%	06/09	29	0.57%	04/10	14	0.27%	01/06	67	0.47%	04/10
	Forgery/Fraud	620	15.55%	05/02	946	18.45%	04/01	728	14.29%	01/07	2,294	16.15%	03/07
	Larceny/Theft	134	3.36%	03/10	228	4.45%	03/02	428	8.40%	01/05	790	5.56%	02/04
	Robbery	287	7.20%	04/04	616	12.02%	03/07	766	15.03%	01/06	1,669	11.75%	02/09
	Aggravated Robbery	581	14.57%	08/01	327	6.38%	08/10	34	0.67%	04/04	942	6.63%	08/03
	All Other Robbery	176	4.41%	05/07	211	4.12%	04/09	111	2.18%	02/02	498	3.51%	04/06
	Drug Offenses												
	Cocaine Offenses	817	20.49%	05/07	556	10.85%	05/07	602	11.82%	02/03	1,975	13.90%	04/07
	Other Drug Offenses	375	9.41%	03/07	398	7.76%	03/02	684	13.42%	01/07	1,457	10.25%	02/06
SOCIAL	Vehicular												
	Vehicular Homicide/DUI	26	0.65%	04/11	31	0.60%	06/01	7	0.14%	02/04	64	0.45%	05/02
	All Other Vehicular	14	0.35%	01/10	70	1.37%	02/06	127	2.49%	01/02	211	1.49%	01/08
	C/S/F Person	33	0.83%	07/02	18	0.35%	06/02	8	0.16%	02/03	59	0.42%	06/02
OTHER	C/S/F Property	38	0.95%	03/06	54	1.05%	03/09	74	1.45%	01/02	166	1.17%	02/07
	C/S/F Societal/ Drugs	59	1.48%	03/08	68	1.33%	02/11	155	3.04%	01/04	282	1.98%	02/02
	Escape	5	0.13%	07/08	17	0.33%	03/11	19	0.37%	08/02	41	0.29%	03/09
	All Other	174	4.36%	03/03	379	7.39%	03/00	689	13.52%	01/02	1,242	8.74%	02/00
	TOTAL	3,987		06/01	5,126		04/10	5,095		01/08	14,208		04/01

Felony Releases Average Time Served by Location: FY 2005-2006

Primary Offense Category	TDOC INHOUSE			TDOC BACKUP			LOCALLY SENTENCED			SYSTEMWIDE			
	Number of Offenders	%	Average Time Served (YY/MM)	Number of Offenders	%	Average Time Served (YY/MM)	Number of Offenders	%	Average Time Served (YY/MM)	Number of Offenders	%	Average Time Served (YY/MM)	
PERSON	Homicide												
	Murder	271	4.39%	15/06	21	0.48%	05/08	24	0.65%	03/00	316	2.22%	14/00
	Negligent Manslaughter	4	0.06%	02/09	5	0.12%	01/02	10	0.27%	01/03	19	0.13%	01/07
	Kidnapping	43	0.70%	13/02	14	0.32%	05/00	12	0.32%	02/01	69	0.49%	09/07
	Sex Offenses												
	Forcible	273	4.42%	09/09	61	1.41%	04/04	54	1.46%	02/08	388	2.73%	07/11
	Non-Forcible	37	0.60%	03/00	72	1.66%	01/09	31	0.84%	01/03	140	0.99%	02/00
	Assault												
	Aggravated Assault	638	10.34%	06/09	285	6.58%	03/02	415	11.20%	02/02	1,338	9.42%	04/07
	Simple Assault	48	0.78%	02/08	65	1.50%	01/11	69	1.86%	01/07	182	1.28%	02/00
PROPERTY	Arson	38	0.62%	06/05	21	0.48%	02/10	8	0.22%	01/06	67	0.47%	04/10
	Burglary	991	16.06%	05/02	604	13.94%	03/00	699	18.87%	01/11	2,294	16.14%	03/07
	Forgery/Fraud	227	3.68%	03/04	374	8.63%	02/00	189	5.10%	07/09	790	5.56%	02/04
	Larceny/Theft	507	8.21%	04/02	573	13.22%	02/06	589	15.90%	01/10	1,669	11.75%	02/09
	Robbery												
	Aggravated Robbery	765	12.39%	08/10	150	3.46%	06/00	28	0.76%	03/01	943	6.64%	08/03
	All Other Robbery	260	4.21%	06/01	100	2.31%	03/00	138	3.72%	02/06	498	3.50%	04/06
	Drug Offenses												
	Cocaine Offenses	955	15.47%	05/11	593	13.69%	03/11	427	11.52%	02/08	1,975	13.90%	03/09
	Other Drug Offenses	516	8.36%	03/06	609	14.05%	02/01	332	8.96%	01/09	1,457	10.25%	04/07
SOCIAL	Vehicular												
	Vehicular Homicide/DUI	50	0.81%	05/09	11	0.25%	03/02	3	0.08%	02/06	64	0.45%	05/02
	All Other Vehicular	76	1.23%	02/01	97	2.24%	01/00	38	1.03%	01/02	211	1.48%	01/08
	C/S/F Person	44	0.71%	07/06	5	0.12%	02/03	10	0.27%	02/06	59	0.42%	06/02
OTHER	C/S/F Property	44	0.71%	04/09	50	1.15%	02/00	72	1.94%	01/07	166	1.17%	02/07
	C/S/F Societal/Drugs	58	0.94%	03/11	76	1.75%	02/00	148	3.99%	01/08	282	1.98%	02/02
	Escape	15	0.24%	04/11	12	0.28%	02/04	14	0.38%	03/10	41	0.29%	03/09
	All Other	312	5.06%	03/03	535	12.35%	01/09	395	10.66%	01/04	1,242	8.74%	02/00
	TOTAL	6,172		06/03	4,333		02/09	3,705		01/11	14,210		04/01

OFFENDER PROGRAMS & SERVICES



TN
DEPT OF
CORRECTION

TENNESSEE DEPARTMENT OF CORRECTION



Inmate Programs: Introduction

Statistics show that approximately 97% of all incarcerated felons are eventually released back into the community. Consequently, the Tennessee Department of Correction is committed to offering programs to help educate and rehabilitate inmates.

Research indicates that programming in prison and community corrections is the best method to reduce the risk of recidivism. Moreover, research-based programs can reduce recidivism up to 25%. Providing offenders the opportunity to overcome addictions, obtain their GED, obtain job skills, and to obtain health and mental health care, are all essential parts of corrections. *Programs are the best way to ensure community safety.*

TDOC Inmate Programs and Services:

- Substance Abuse Treatment
- Educational Services
- Pre-Release Services
- Vocational Training
- Sex Offender Treatment
- Victim Impact
- Life Skills Training
- Health and Mental Health

Bridges

Bridges was a three-phase program designed to assist inmates with successful re-entry into society. The 3-year program was established in the fall of 2002, with a \$1 million dollar federal grant. The pilot program targeted those inmates who were considered serious and violent offenders with a high risk to recidivate. Participants were paroled to the program and released on parole supervision after successfully completing Phase I (9-12 months).

A total of 261 participants were paroled to TN Bridges. The recidivism rate was currently 52.2%, while the control group had a 79.7% recidivism rate. The TN Bridges program provided TDOC with a foundation for the creation of transition centers. The New Start Transition Center at the Tennessee Prison for Women began July 1, 2005 and the TN Bridges program was converted to a transition center in September 2005 at the Charles Bass Correctional Complex.

TREC

The mission of TREC (Tennessee Re-Entry Collaborative) is to provide a continuum of services for all offenders re-entering society that seeks to: restore victims, communities, and offenders and helps offenders to be successful in order to reduce recidivism and promote public safety. There are 22 different agencies participating in this collaborative. Some examples of the progress this group has made include: developed training for mentors, held mock women's job fair at TPW, resource packet developed for offenders, developed strategies to find offender housing, and developed cross section coalition/collaboration of employment service providers.

Rehabilitative Services Milestones and Future Initiatives

FY 2005-2006 Highlights

- Tennessee Bridges, the federally funded Serious and Violent Offender Reentry Initiative ended. Participants of the program recidivated at a rate of 52.2%, significantly lower than the 79.7% recidivism rate for the control group. Participants still under the TN Bridges umbrella are now participants in the Genesis transition center program.
- New legislation was passed authorizing the Department, in cooperation with the Board of Probation and Parole, to establish and operate a diversion program for select parole technical violators.
- Increased the number of participants receiving services in a therapeutic community from 250 to over 550. Both transition centers are based on a modified therapeutic community model.

FY 2006-2007 Planned Initiatives

- Continue to develop the Transition Accountability Plan through the needs assessment process (TAP) and initiate offender release planning at the beginning of incarceration.
- Expand mandated pre-release programming to two (2) additional institutions.
- Implement new GED curriculum and review and restructure out dated curriculum check sheets.
- Implement parole technical violator diversion program.

Transition Centers

TDOC has developed two transition communities within our prisons, which are designed to gradually prepare offenders to live successfully in the free world. The primary goal is to assist participants in changing negative patterns of thinking, feeling, and behaviors that predispose them to behavior such as drug abuse, criminal activities, and other anti-social behaviors.

The program is designed for completion within a nine-month period. The design calls for successful progress through the three 3-month phases. Phase I is a treatment/classroom phase including substance abuse treatment, life skills, victim awareness, cognitive behavior programming, and anger and stress management. Phase II is community service with emphasis on after-care for substance abuse and job readiness. Phase III is work release and programming on job retention, family reunification, assignment of a mentor, and after care for substance abusers.

The criteria for acceptance at a transition center includes the probability of release from incarceration within 12 to 15 months, eligible for minimum custody placement, meeting the physical requirements of community service projects and/or work release and restrictions related to disciplinary convictions and history.

Genesis

Genesis is the pilot transition center program for males, Genesis, is located at the annex of CBCX. The criteria for consideration to the program include a conviction in Davidson county or a county contiguous to Davidson county. Eighty-six beds are designated for Genesis and the three phases. However, if a participant has completed the Genesis program, and is not yet released from incarceration, they may be allowed to remain on work release, at the Annex in an after-care component. The program began in September, 2005. As of July 2006, 120 men had been accepted into the program. Of those, 18 have paroled to the community, none have expired their sentence, and 9 have been terminated for lack of success (disciplinary action).

New Start

New Start is the pilot transition center program for females. New Start is located at the annex of the Tennessee Prison for Women and has a bed capacity of 40 inmates. TDOC has a contract with YWCA to provide the majority of the transition center programs and services. New Start opened its program in July 2005. To date, eighty-three women have attended the program, seventeen have been released to the community, and 12 were dropped prior to completion.

Institutional Programs

Institution	BMCX	DSNF	HCCF	MLCC	CBCX	NECX	NWCX	RMSI	SCCF	STSR	TCIP	TPFW	WCBC	WCFA	WTSP
Facility/Security Level	IV	IV	II	III	III	IV	III	IV	III	II	III	IV	I	II	IV
Academic Programs															
Adult Education	X	X	X	X	X	X	X	X	X	X	X	X	X	X	X
GED	X	X	X	X	X	X	X	X	X	X	X	X	X	X	X
Literacy Program	X			X	X	X	X	X		X					
Title I Program							X					X			
Vocational Programs															
Air Cooled Engine Technology															X
Auto Mechanics							X								X
Barbering							X			X					X
Building Maintenance Service			X												
Cabinet Making/Millwork							X	X			X				
Carpentry							X			X					
Commercial Cleaning	X		X	X		X	X	X	X		X	X			X
Comm. Food Service/ Culinary Arts	X					X				X	X	X			
Computer Skills						X	X		X		X	X			X
Computer Repair							X							X	
Cosmetology				X							X	X			
Electrical			X			X	X		X	X				X	
Graphic Arts/Printing						X									
HVAC & Refrigeration	X						X			X					X
Interior Design & Finish							X		X						
Landscaping/Horticulture			X			X	X		X		X	X			
Masonry							X	X	X	X				X	X
Plumbing							X		X						
Residential Construction	X			X		X	X	X	X			X		X	X
Sewing															X
Small Engine Repair							X							X	
Upholstery	X		X						X	X					X
Welding							X								
Mental Health/Behavioral															
Sex Offender Aftercare		X	X	X			X			X		X	X	X	
Sex Offender Treatment Ph.1		X										X			
Sex Offender Treatment Ph.2										X		X			
Victim Impact Classes	X				X	X						X			
Substance Abuse															
Substance Abuse Group Therapy	X	X		X	X	X	X	X	X	X	X	X	X	X	
Therapeutic Community	X		X	X			X		X	X	X	X	X	X	X
Health															
Geriatric Care		X										X	X		
Medical In-Patient/Out Patient	X	X	X	X	X	X	X	X	X	X	X	X	X	X	X
Employment															
Community Service	X		X	X	X	X	X		X	X	X	X	X		X
Work Release	X			X	X							X			
Support	X	X	X	X	X	X	X	X	X	X	X	X	X	X	X
Program Services	X	X	X	X	X	X	X	X	X	X	X	X	X	X	X
TRICOR															
Apparel	X					X									X
Data Entry						X		X							
Farm										X					X
Print Plant						X		X							
Sports Ball Packaging				X			X								
Transition and Pre-Release															
Transition Centers					X							X			
Pre-Release	X	X	X	X	X	X	X	X	X	X	X	X	X	X	X

Substance Abuse Services

Substance abuse causes more illness, death, and disabilities than any other preventable health problem in America today and has contributed significantly to the recent growth in the prison population. On an average day, nearly 1.8 million people in the U.S. are incarcerated, with more than three million on parole or probation, a large percentage of who have serious substance abuse issues. Studies demonstrate the effectiveness of substance abuse treatment in reducing drug use, criminal activity, homelessness, risky sexual behavior, and recidivism rates.

Incarceration provides the opportunity to offer intensive treatment services for drug and alcohol abusing offenders. When in-prison substance abuse treatment is combined with transitional release services and community aftercare, the positive effects become even stronger.

Program Goal

Reduce the rate of recidivism by breaking the cycle of substance abuse, criminal behavior, and incarceration.

FY 2005-2006 Accomplishments

- Added 304 beds at three new Therapeutic Community programs, funded by a two-year \$800,000 Residential Substance Abuse Treatment for State Prisoners (RSAT) grant.
- Therapeutic Community inmates completed almost 50,000 community service hours.
- Fifteen TDOC drug and alcohol counselors completed training through the Tennessee Bureau of Alcohol and Drug Abuse Services.
- TPW's Therapeutic Community was the subject of a series that will air nationally on A&E in Fall 2006.
- 31 Therapeutic Community participants received GED tutoring, 5 of whom obtained their GED.

TDOC's substance abuse programs are based on the idea that the program participant is ultimately responsible for his or her recovery. Participants work closely with counselors to develop individual treatment goals and strategies. Treatment focuses on individual needs and does not have to be voluntary. Mandated treatment can result in longer stays in the program, which is associated with more successful treatment outcomes.

TDOC Substance Abuse Delivery System Services

Institution	Annual Program Capacity	Length of Program	Program Components
Brushy Mt. Correctional Complex	100 100	6 Months	Modified Therapeutic Community, Education/Didactic Group Process, Self Help, Urinalysis Testing
Middle Tennessee Correctional Complex	100 76	10 Weeks	Assessment, cognitive group therapy treatment Transition center Self Help, Urinalysis Testing
Mark H. Luttrell Correctional Center	32 100	9-12 Months 3 Months	Assessment, Therapeutic Community, Cognitive Group Therapy Self Help, Urinalysis Testing
Northeast Correctional Complex	100 50	6 Months	Assessment, cognitive/didactic group process, Cognitive Group Therapy Self Help, Urinalysis Testing
Northwest Correctional Complex	128 48	6 Months 9 Months	Assessment, Modified TC Outpatient Cognitive Skills Development Therapeutic Community (MRT) Self Help, Urinalysis Testing
Riverbend Maximum Security Institution	100	6 Months	Assessment, Individual and Cognitive Group Therapy Self Help Group, Urinalysis Testing
Southeastern Tennessee State Regional Correctional Facility	100 54	6 Months 9 Months	Assessment, Education/Didactic Group Process, Residential Therapeutic Community. Self Help, Urinalysis Testing
Tennessee Prison for Women	64 100	9-12 Months 3 Months	Assessment, Residential Therapeutic Community, Self Help Group, Urinalysis Testing Cognitive group therapy
Deberry Special needs prison	50	12 Weeks	Cognitive Group Counseling, Urinalysis Testing Self Help
Turney Center Industrial Prison	100 76	6 Months 9 Months	Assessment, Education/Didactic Group Process, Self Help Group, Urinalysis Testing Therapeutic Community Treatment
Wayne County Correctional Complex	100	10 Weeks	Assessment, Cognitive Group Therapy Self Help Group, Urinalysis Testing
Wayne County Annex	100	12 Weeks	Assessment, Community Technical Violators Program, Individual/Group Counseling Services, Cognitive Skills Development, Urinalysis Testing
West Tennessee State Penitentiary	128	9 Months	Assessment, Therapeutic Community treatment with Cognitive Skills Development, Self Help
Total Annual Program Capacity	1806		

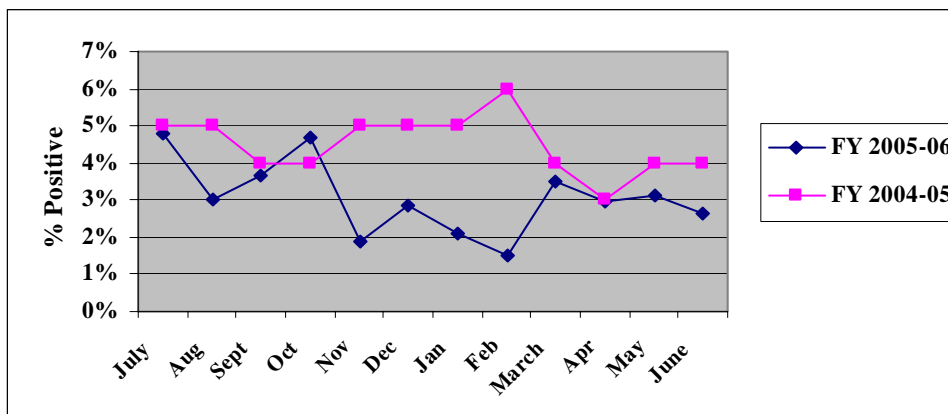
Drug Screens

Random drug screens are conducted monthly on 10% of the inmate population. These screens are necessary to identify contraband substances frequently used in prison. In addition, substance abuse program participants are tested on a regular and random basis. All positive screens are confirmed through additional testing, and graduated sanctions are used for any positive drug screen.

TDOC Monthly Random Inmate Drug Test Results FY 2005-2006

MONTH	NUMBER TESTED	REFUSED	POSITIVE	FY 2006 %POSITIVE (includes refusals)	FY 2005 %POSITIVE
July	1,947	16	77	5%	5%
Aug	1,907	15	42	3%	5%
Sept	1,714	13	50	4%	4%
Oct	1,893	16	73	5%	4%
Nov	1,986	5	32	2%	5%
Dec	1,869	6	47	3%	5%
Jan	1,517	8	24	2%	5%
Feb	1,616	4	20	1%	6%
March	1,718	9	51	3%	4%
Apr	1,663	12	37	3%	3%
May	1,569	2	47	3%	4%
June	1,551	2	39	3%	4%
TOTAL	20,950	108	539	3%	5%

Monthly Random Inmate Drug Test Results



Education

The Department recognizes the crucial role education and training play in the successful rehabilitation of incarcerated felons. With additional education and training, ex-felons are less likely to re-offend than those who do not learn a skill or trade while incarcerated. TDOC operates as its own school system, recognized by the Department of Education, with the Commissioner acting as the Superintendent. Roughly 20% of the eligible inmate population is enrolled in either academic or vocational training.

Qualified, committed teachers and support staff are vital toward our student success rate. All principals and teachers hold valid professional licenses granted by the Tennessee Department of Education.

All fifteen facilities have adult education programs that offer both adult basic education and GED preparation. Inmates are given the opportunity to take the GED test if they meet the requirements. The GED pass rate for 2005-2006 was 71%. TDOC serves as a testing center for administering the GED test and adheres to the guidelines set forth by the GED Testing Service in Washington DC, the Tennessee Department of Labor and Workforce Development Adult Education Office, and the State GED Administrator. Many inmates also participate in volunteer literacy programs.

Thirteen of the institutions also offer vocational training. Many of these vocational programs follow a curriculum from the Tennessee Department of Education and provide a certificate upon graduation. A select number of vocational programs also offer certification/apprenticeships from the Department of Labor. Vocational programs in our contracted facilities follow a curriculum from the Pontiac Business Institute, which is recognized by the Tennessee Commission on Higher Education.

The Education division also oversees inmates participating in college programs. Such work is voluntary and is at the expense of the inmate.

	<u>G.E.D. Certificates</u>	<u>Vocational Certificates</u>
1999-2000	609	651
2000-2001	766	692
2001-2002	511	865
2002-2003	326	425
2003-2004	606	1,434
2004-2005	598	1,765
2005-2006	464	1,473

FY 2005-2006 Accomplishments

- Provided the institutions with an updated academic curriculum to be used in all schools across the state.
- Worked with the Department of Education to evaluate existing vocational offerings and to upgrade selected trade and industrial vocational curriculum.
- Established agreement with MIS to upgrade computers in vocational programs, install computers in selected academic classes, and to provide teachers with computers.
- Created an Education section on the TDOC Intranet to improve communication and to increase efficiency.

Educational Enrollment: FY 2005-2006

INSTITUTION	Full-time ABE/GED	Part-time ABE/GED	Closed Circuit TV	Volunteer Literacy	College*	Vocational	TOTAL
BMCX	504	0	2	50	34	254	844
CBCX	0	107	0	93	30	0	230
DSNF	0	140	0	0	0	0	140
HCCF	1,911	0	0	0	0	365	2,276
MLCC	126	0	0	22	8	101	257
NECX	1,215	14	0	1	83	1,206	2,519
NWCX	1,389	0	0	32	0	926	2347
RMSI	252	8	66	25	12	166	529
SCCF	921	116	0	0	7	640	1,684
STSRC	139	10	0	57	0	324	530
TCIP	378	0	0	0	25	337	740
TPW	281	0	0	0	8	119	408
WCBC	338	310	0	0	10	0	658
WTSP	825	0	332	0	4	693	1,854
WCFA	486	0	46	0	3	563	1,098
SYSTEM-WIDE TOTAL	8,765	705	446	280	224	5,694	16,114

*College courses are taken via correspondence at the inmate's expense.

GED Test Results: FY 2005-2006

	# Passing	# Tested	% Passed
BMCX	29	40	72.5%
CBCX	30	35	85.7%
DSNF	2	2	100.0%
HCCF	49	63	77.8%
MLCC	12	13	92.3%
NECX	26	36	72.2%
NWCX	39	56	69.6%
RMSI	18	40	45.0%
SCCF	59	87	67.8%
STSRC	25	33	75.8%
TCIP	7	8	87.5%
TPW	26	31	83.9%
WCBC	30	43	69.8%
WTSP	62	96	64.6%
WCFA	50	71	70.4%
SYSTEM-WIDE TOTALS	464	654	70.9%

Pre-Release and Transition Services

Pre-release and transition services are responsible for establishing programs at each institution to ease inmate adjustment from institutional to “free world” life, ultimately reducing the likelihood that the offender will re-offend. In preparation for community reintegration, inmates attend programming in the following areas:

Pre-Release Programming/Services

- Self-evaluation
- Decision-making and critical thinking
- Education
- Anger management
- Parenting and family reunification
- Substance abuse treatment
- Job seeking and retention
- Housing

Pre-release programming is offered at each TDOC correctional facility as well as the three private facilities. Each facility has a designated Pre-Release Coordinator as well as full time paid program positions for inmates participating in the pre-release program.

FY 2005-2006 Accomplishments

- Increased program positions available from 28% to 32%.
- Established a syllabus and guidelines for a consistent pre-release program.
- Established an inmate evaluation of the pre-release program.

FY 2005-2006 Statistics

- 27% of all inmates released participated in the formal pre-release program with 1,395 graduating.
- Increased available program slots by 29%
- Increased the number of released inmates who graduated from pre-release programming by 37%.
- 70% of program participants were released into the community.
- 34% of program participants were granted parole.
- 31% of program participants were released at the expiration of their sentence.

Volunteer Services

Ultimately, roughly 97% of the individuals who are incarcerated at a TDOC facility eventually go back to their hometowns. Although Tennessee is nicknamed "the Volunteer State," it's often difficult to find individuals willing to volunteer within the prison system. Within the Department we have approximately 4,000 volunteers. It's crucial that the Department and the community work hand in hand to help inmates become better citizens while serving their sentence. Volunteers are the greatest outside resource to accomplish this goal.

Volunteers are used to provide services to inmates and their families that are not offered by the Department. Volunteers are recruited from communities throughout the state to deliver important services such as tutoring, financial planning, and counseling services within the institutions. In addition, a number of faith-based services are also provided through volunteers.

Current Volunteer Programs:

- Alcoholics Anonymous
- Narcotics Anonymous
- Inside/out
- Anger Management
- Celebrate Recovery
- Theotherapy

Good Samaritan Network

The Good Samaritan Network is a network of faith-based, non-profit, and civic organizations that agree to help offenders once released with:

- Mentoring
- Housing
- Employment
- Food
- Clothing
- Transportation

The development of the Good Samaritan Network has sparked great interest. It now has three members representing (3) three counties in Tennessee. It has also been in two media publications since its inception.

FY 2005-2006 Accomplishments

- Kicked off a state-wide mentoring program.
- Formed a partnership with Celebrate Recovery for programs in each of our institutions.

Mental Health Services

The Tennessee Department of Correction is one of the largest providers of mental health services in the state. Last year, more than 45,000 clinical services were provided to incarcerated offenders with mental illness. At any given time, approximately 20% of the inmate population is diagnosed with a mental disorder, and as many as 19% of the inmate population has both a mental disorder and a diagnosed substance dependence. Further, approximately 16% of the inmate population requires continual medication management. Nearly 30% of the mental health budget is allocated for psychotropic medications.

It is the mission of the Mental Health Services division to evaluate, assess, identify and treat mentally ill offenders by applying ethical standards in medicine, psychology, and rehabilitation. In each institution, programs and services are made available to inmates who are not mentally ill, but experiencing disturbances in their emotions and/or behavior. Mental health consultation is available to all inmates. Services are consistent with state, federal, and accreditation mandates. The mental health division strives to preserve public safety by helping inmates prepare for successful reentry to society.

Mainstreaming is at the core of the treatment philosophy implemented in the institutions. Inmates with mental illness are not normally segregated from the general population; treatment is provided to them in a naturalistic environment. However, when inmates experience psychiatric crisis and cannot be safely housed in the general population, they are transferred to intensive, inpatient treatment at DeBerry Special Needs Facility (DSNF), which has the capacity to provide inpatient treatment to more than 370 mentally ill offenders. Specialized treatment services at DSNF include inpatient sex offender treatment and a unit for the cognitively disabled offender.

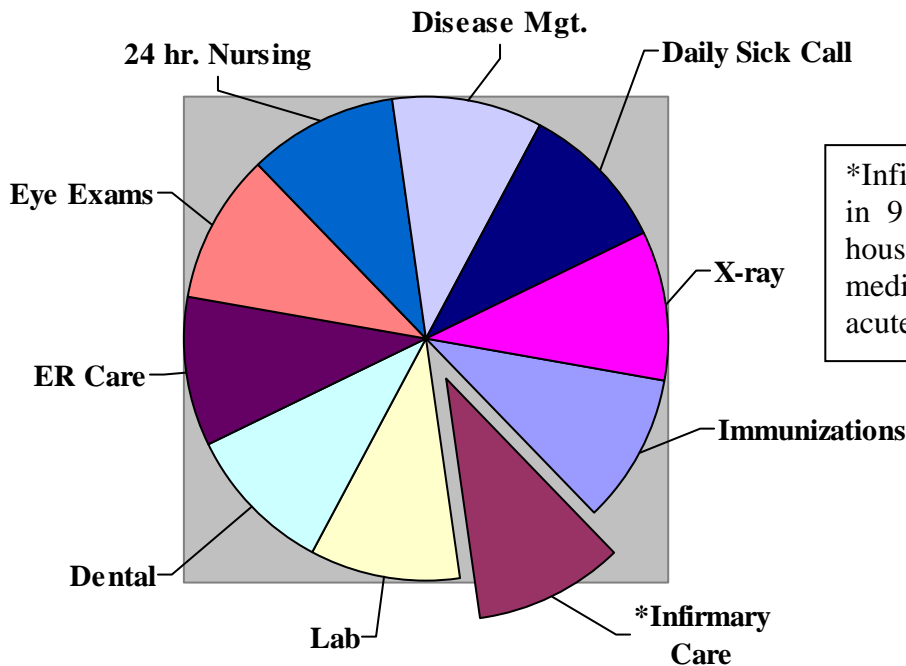
Sex Offender Treatment Program

The sex offender treatment program is an intensive three-year program aimed at reforming sexual predators. Participation in the program is voluntary and includes three phases of treatment. Phase I treatment is located at DeBerry Special Needs Facility and is an intensive 2-3 year program. Phase II treatment is located at STRCF, and aftercare is available throughout the TDOC system.

Health Services

Providing health care to more than 19,000 inmates is both costly and complex. While the department provides only medically necessary care (no elective or cosmetic procedures), the scope of services provided is comprehensive and is consistent with services provided to the general public.

On-Site Patient Services



*Infirmery care is only available in 9 facilities and is utilized to house patients in the clinics for medical observation and/or sub-acute care.

Services are designed to coordinate and integrate each patient's health care needs. TDOC's health care system is broad in scope and provides diagnostic and evaluation services, routine medical care, emergency care, chronic disease care, and patient education. Any services that cannot be managed at the on-site clinic or infirmery are referred to DeBerry Special Needs Facility (DSNF) or the Tennessee Prison for Women (TPW).

Specialty Health Services

Audiology
Cardiology
Dermatology
Ear, Nose & Throat
Gastroenterology
General Surgery
Infectious Diseases
Nephrology

Neurology
Neurosurgery
OB/Gyn
Oncology
Ophthalmology
Oral Surgery
Orthopedics
Orthopedic Surgery

Podiatry
Physical Therapy
Pulmology
Radiology
Rehab Services
Urology
Vascular Surgery
Other (as needed)

Victim Services

The Tennessee Department of Correction is committed to assisting the victims of crime. In line with that commitment, one of the Department's primary responsibilities is to keep victims and their family members informed of an offender's status, including any hearing dates and decisions, release dates, movements to less secure institutions, and escapes. Each week, approximately 30 new people request to be notified about specific inmates.

Victim Services also assists victims of crime and/or their family throughout the parole process. Each institution now provides separate waiting areas for victims of crime and/or their families, out of sight of the offender and his or her family. This separation has greatly decreased the tension for victims and their families at parole hearings.

FY 2005-2006 Accomplishments

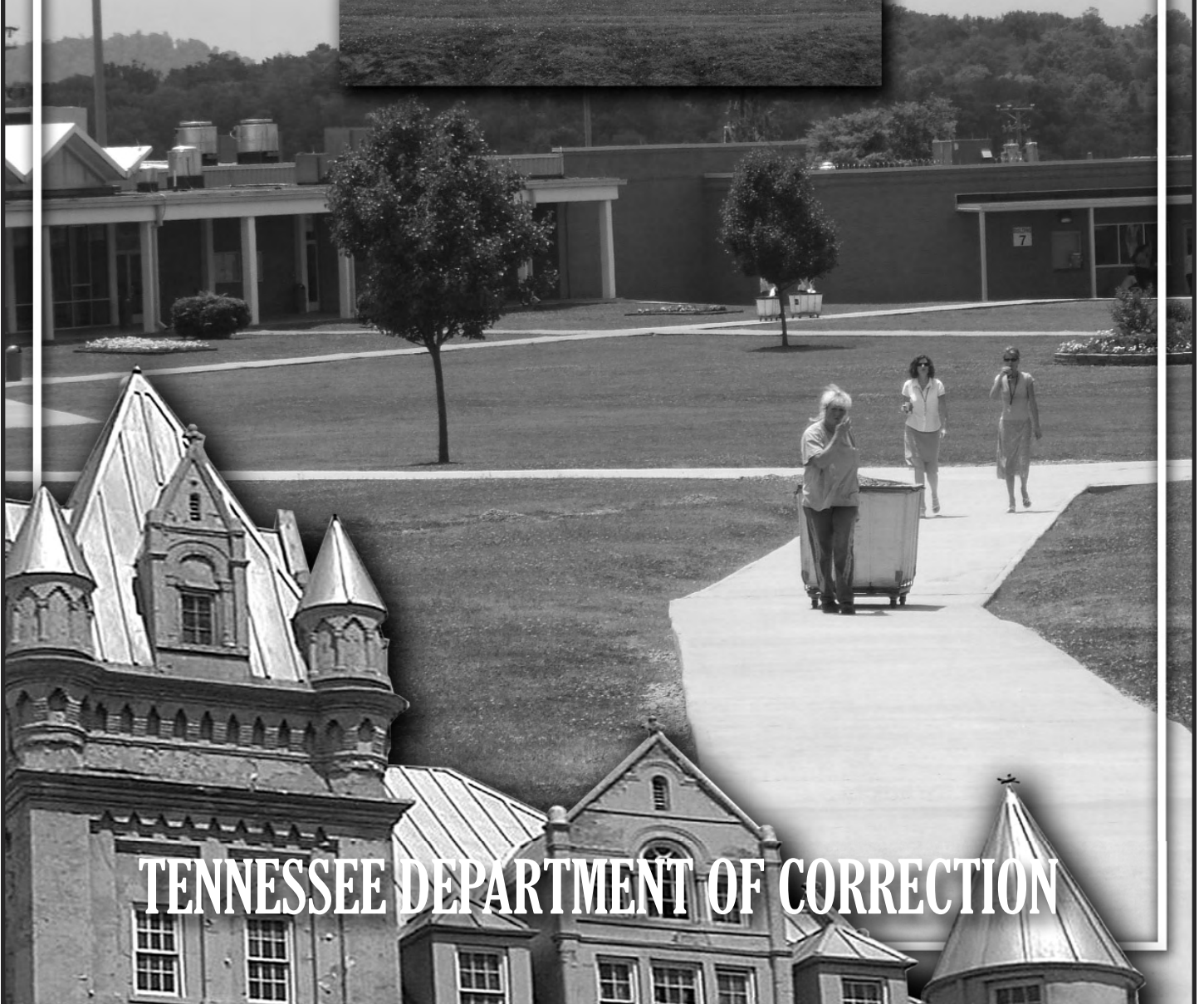
- Completed a video, "The Other Side of Death Row," featuring victims of offenders incarcerated on Death Row.
- Implemented a 36-hour Victim Impact Class at the two new Transition Centers.
- Tennessee was invited to participate in a four-state pilot study to standardize the victim impact curriculum nationally.

Victim Impact Classes and Restorative Justice

Victim Impact classes are now required for all eligible inmates through the pre-release curriculum. Speakers who were actual victims of crime are used in training and classroom experiences for inmates. Indicators show an average increase of 62% in understanding of the impact of crime in pre to post-test scores.

Victim Services continues to work with Victims' Voices from Oak Ridge, Tennessee, to set up a pilot program providing victims who wish to meet face-to-face with their offender a structured opportunity to personally address the harm created by the crime and to determine what can help each party find meaning from his/her experience. This experience is set up to provide help and healing for each person to the maximum extent possible.

INSTITUTIONS

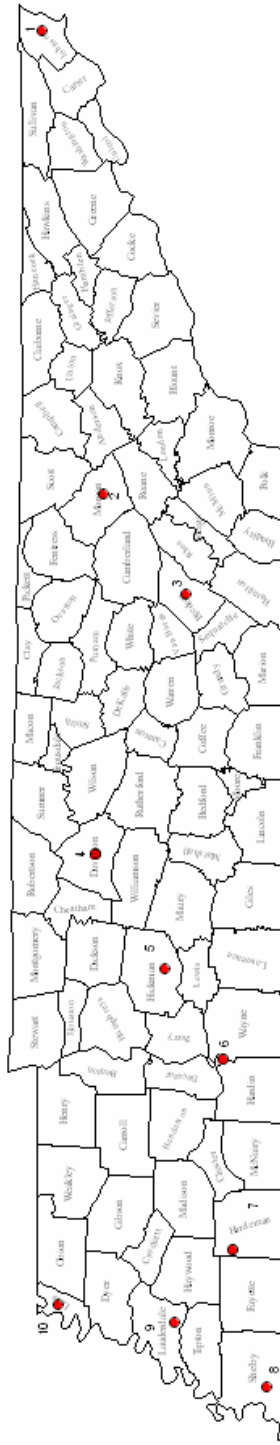


TENNESSEE DEPARTMENT OF CORRECTION

TDOC Facilities and Security Designations: June 30, 2006

Institutional Security Levels	
LEVEL	CUSTODY
I	Minimum Direct/Trusty
II	Medium
III	Close
IV	Maximum

Custody Level	Number of Offenders	Percent of Total
Maximum	948	4.9%
Close	458	2.4%
Medium	13,399	69.9%
Minimum	3,458	18.1%
Unclassified	894	4.7%
TOTAL	19,157	



County	Facility	Acronym	Security Level
1. Johnson County	Northeast Correctional Complex	NECX	IV
2. Morgan County	Brushy Mountain Correctional Complex	BMCCX	IV
3. Bledsoe County	Morgan County Correctional Complex	MCCX	III
4. Davidson County	Southeast TN State Regional Correctional Facility	STSRC	III
	Charles Bass Correctional Complex	CBCX	III
	DeBerry Special Needs Facility	DSNF	IV
	Riverbend Maximum Security Institution	RMSI	IV
5. Hickman County	Tennessee Prison for Women	TPW	IV
6. Wayne County	Turney Center Industrial Prison and Farm	TCIP	III
	South Central Correctional Facility	SCCF	III
7. Hardeman County	Wayne County Boot Camp	WCBC	I
	Hardeman County Correctional Facility	HCCF	III
	Whiteville Correctional Facility	WCFA	II
8. Shelby County	Mark Luttrell Correctional Center	MLCC	III
9. Lauderdale County	West Tennessee State Penitentiary	WTSP	IV
10. Lake County	Northwest Correctional Complex	NWCX	III

Average Daily Population: FY 2005-2006

Institution	Average Daily Population
Brushy Mountain Correctional Complex*	1,545
Charles Bass Correctional Complex	1,048
DeBerry Special Needs Facility	653
Hardeman County Correctional Facility	1,986
Mark Luttrell Correctional Center	419
Northeast Correctional Complex	1,824
Northwest Correctional Complex	2,314
Riverbend Maximum Security Institution	707
South Central Correctional Facility	1,651
Southeastern TN State Regional Corr. Facility	950
Tennessee Prison for Women	740
Turney Center Industrial Prison	1,101
Wayne County Boot Camp	404
Whiteville Correctional Facility	1,518
West Tennessee State Penitentiary	2,516
System Total	19,376
Source: TDOC Bedspace and Operating Capacities Report	

*Brushy Mountain Correction Complex and Morgan County Correctional Complex separated on June 24, 2006. In order to maintain the integrity and interpretability of the data, separate data for each institution will be shown beginning July 2006.

Demographics by Facility: June 30, 2006

	Age								Race			Gender	
	<20	20-24	25-29	30-34	35-39	40-49	50+	Avg Age	Black	White	Other	Male	Female
BMCX	7	139	267	250	260	420	209	37.1	387	1,147	18	1,552	0
CBCX	11	138	202	166	141	247	80	35.0	494	465	29	987	1
DSNF	6	44	53	64	69	154	164	42.7	187	358	9	554	0
HCCF	9	271	440	344	306	443	178	35.1	1,185	770	36	1,991	0
MLCC	2	36	78	87	71	106	31	35.6	167	233	11	1	410
NECX	7	139	306	283	314	512	258	38.1	412	1,382	25	1,819	0
NWCX	44	407	405	326	335	555	268	35.5	1,170	1,080	90	2,340	0
RMSI	3	56	123	109	99	186	113	38.0	364	314	11	689	0
SCCF	12	204	330	282	242	411	177	36.0	752	877	29	1,658	0
STSR	5	59	160	145	150	266	172	39.1	288	660	9	957	0
TCIP	8	120	209	214	161	270	131	36.4	538	548	27	1,113	0
TPW	1	58	140	145	154	176	63	36.3	174	553	12	0	742
WCBC	4	39	21	15	1	0	0	25.2	33	46	1	80	0
WANX	0	17	50	49	37	98	91	42.4	172	169	1	342	0
WCFA	8	272	335	243	247	293	116	33.9	889	607	18	1,514	0
WTSP	18	352	508	425	391	583	223	35.1	1,440	1,019	41	2,500	0
SYSTEM	145	2,351	3,627	3,147	2,978	4,720	2,274	36.3	8,652	10,228	367	18,097	1,153

Source: Tennessee Offender Management Information System

Facility Populations by Primary Offense: June 30, 2006

		PERCENT OF INDIVIDUAL FACILITY POPULATION															
	BMCX	CBCX	DSNF	HCCF	MLCC	NECX	NWCX	RMSI	SCCF	STSRC	TCIP	TPW	WCBC	WANX	WCFA	WTSP	
Facility Population	1,551	986	553	1,991	411	1,819	2,340	689	1,657	957	1,113	736	80	342	1,514	2,500	
OFFENSE																	
PERSON OFFENSES	47%	25%	71%	48%	36%	53%	46%	65%	41%	64%	54%	33%	0%	40%	39%	42%	
Homicide	20%	7%	24%	16%	20%	23%	15%	42%	13%	28%	26%	17%	0%	15%	14%	18%	
Kidnapping	1%	1%	1%	1%	2%	1%	1%	2%	1%	2%	2%	1%	0%	2%	1%	1%	
Sex Offenses	16%	7%	37%	19%	1%	17%	17%	13%	16%	24%	16%	3%	0%	13%	10%	10%	
Assault	10%	10%	9%	12%	14%	11%	13%	8%	11%	10%	11%	12%	0%	10%	14%	12%	
PROPERTY OFFENSES	30%	38%	18%	33%	36%	30%	34%	26%	32%	25%	29%	37%	40%	33%	37%	37%	
Arson	1%	1%	1%	0%	0%	1%	1%	1%	0%	1%	1%	1%	0%	1%	0%	0%	
Burglary	12%	12%	5%	9%	9%	11%	10%	5%	11%	7%	9%	8%	23%	6%	11%	12%	
Forgery/Fraud	2%	2%	1%	1%	9%	1%	1%	1%	1%	1%	0%	10%	1%	1%	1%	2%	
Larceny/Theft	5%	7%	2%	3%	7%	4%	4%	3%	4%	3%	4%	10%	13%	4%	4%	5%	
Robbery	11%	17%	10%	20%	11%	14%	18%	17%	16%	13%	16%	9%	4%	21%	21%	18%	
SOCIETAL OFFENSES	14%	30%	9%	15%	19%	12%	16%	7%	22%	9%	13%	23%	55%	24%	18%	16%	
Drugs/Narcotics	15%	28%	9%	14%	18%	10%	15%	7%	21%	7%	13%	21%	55%	22%	17%	16%	
Vehicular Homicide/DUI	2%	2%	0%	1%	1%	2%	1%	1%	1%	2%	0%	2%	0%	2%	1%	1%	
ALL OTHER OFFENSES	5%	7%	2%	4%	9%	5%	4%	2%	5%	2%	3%	8%	5%	3%	6%	5%	
C/S/F Person*	1%	1%	1%	1%	5%	1%	1%	1%	1%	1%	2%	4%	0%	0%	2%	1%	
C/S/F Property*	0%	1%	0%	0%	1%	0%	0%	0%	0%	0%	0%	1%	0%	0%	0%	0%	
C/S/F Societal*	0%	2%	0%	1%	1%	0%	0%	0%	0%	0%	1%	0%	4%	0%	1%	0%	
Escape	0%	0%	0%	0%	0%	0%	0%	0%	0%	0%	0%	0%	0%	0%	0%	0%	
All Other	4%	4%	1%	2%	1%	3%	3%	1%	3%	1%	1%	3%	1%	2%	4%	3%	
TOTAL	100%	100%	100%	100%	100%	100%	100%	100%	100%	100%	100%	100%	100%	100%	100%	100%	

Note: Facilities total do not include 12 missing or unprocessed judgement orders. * C/S/F = Refers to non-substantive offenses such as conspiracy, solicitation, facilitation, aiding and abetting, etc.

**Inmates Incarcerated Over 10 Consecutive Years
Primary Offense, Average Time Served and Location: June 30, 2006**

	BMCX	CBCX	DSNF	HCCF	MLCC	NECX	NWCX	RMSI	SCCF	STSR	TPW	TCIP	WCBC	WCFA	WTSP	# of Offenders	Avg Time Served (YY/MM)
Primary Offense Group																	
Homicide	141	29	64	66	28	194	120	126	69	121	29	96	23	37	141	1,284	18/00
Kidnapping	1	2	1	5	0	6	4	4	4	2	0	3	0	2	5	39	20/07
Sex Offenses	71	4	38	31	2	114	75	30	58	75	4	56	15	14	61	648	17/10
Robbery	8	3	4	5	0	14	11	9	6	12	0	8	3	5	23	111	17/04
Burglary	2	0	0	1	0	2	0	2	1	1	0	3	0	0	2	14	18/08
Assault	9	2	5	5	2	8	10	3	7	7	2	6	3	5	11	82	17/00
Drugs	1	0	0	0	0	3	1	0	0	4	0	0	0	0	1	6	15/00
Arson	3	0	0	0	0	1	1	1	0	0	0	2	0	0	1	9	13/07
Larceny/Theft	0	0	0	0	0	0	0	0	0	0	0	0	0	0	2	2	26/01
C/S/F Person	1	0	1	0	1	0	2	1	2	0	2	3	0	0	0	13	17/04
Other	0	0	0	1	0	0	0	1	0	1	0	0	0	1	1	5	21/05
Total	237	40	113	114	33	342	224	177	147	216	37	177	44	64	248	2,164	
Sentence Type																	
Death	1	0	0	0	0	0	1	52	0	0	2	0	0	0	0	57	19/11
Life	108	2	41	44	16	138	64	60	50	77	18	69	13	24	71	795	20/06
Life without Parole	5	0	0	2	0	1	3	1	3	4	1	3	0	1	8	32	13/04
Life Minimum 25 yrs.	8	0	2	7	3	13	8	2	7	9	3	7	0	1	12	82	12/00
Habitual	4	0	1	1	0	3	2	2	4	4	0	8	0	0	5	34	22/11
85%	3	0	0	0	0	2	1	1	3	3	0	1	0	1	3	18	12/04

**Assaults, Inmate Deaths and Escapes
FY 2005-2006**

	1st Qtr	2nd Qtr	3rd Qtr	4th Qtr	Total
Assault					
Assault on Offender	90	79	70	71	310
Assault on Staff	126	94	101	85	406
Death					
Homicide	0	2	0	0	2
Suicide	2	1	2	0	5
Accidental Death	0	1	0	0	1
Natural Death	13	18	21	17	69
Lethal Injection	0	0	0	1	1
Escape					
Secure Supervision	2	0	0	0	2
Minimum Security	1	0	0	0	1
Minimum Security - Work Crew - Supervised	2	1	1	1	5
Minimum Security - Work Crew - Unsupervised	0	0	0	0	0
Furlough/Pass	0	0	0	0	0

TDOC Incident Summary: FY 2005-2006

Average Population		WCBC	MLCC	TPW	RMSI	DSNF	STSRC	CBCX	TCIP	SCCC	NECX	BMCX	WTSP	HCCC	NWCX	WCFA	SYSTEM
		406	416	733	695	643	981	1028	1091	1628	1800	1530	2475	1963	2285	1486	19158
Arrest	FURL/PASS-VIOLENT CRIME	0	0	0	0	0	0	1	0	0	0	0	0	0	0	0	1
Arrest	FURL/PASS-FELONY	0	0	0	0	0	0	0	0	0	0	0	0	0	0	0	0
Arrest	FURL/PASS-MISDEMEANOR	0	0	0	0	0	0	0	0	0	0	0	0	0	0	0	0
Arrest	FELONY-OFN	0	0	0	0	0	0	0	0	0	0	0	0	0	0	0	0
Arrest	FELONY-STAFF	0	0	0	1	0	0	1	2	3	0	2	2	2	1	7	19
Arrest	FELONY-VISITOR	2	1	1	2	0	1	0	2	1	12	8	10	10	6	9	65
Arison *	SER-INJ-PROP DMG->\$500-OPER DISRUP	0	0	0	1	0	0	0	0	0	0	0	0	0	0	0	1
Arison *	INJURY-PROP DMG/>\$500-OPR DISRUP	0	0	0	0	0	0	0	0	0	0	0	0	0	0	0	0
Arison *	PROP DMG->\$500	0	0	0	0	0	0	0	0	0	0	0	0	0	0	0	0
Assault *	STAFF-SERIOUS INJURY	0	0	0	0	0	0	0	0	1	0	0	1	1	0	0	3
Assault *	STAFF-INJURY	0	1	0	8	8	0	1	1	2	2	5	10	1	3	3	45
Assault *	STAFF-MINOR INJURY	0	0	0	14	8	1	1	6	8	3	8	21	8	17	13	108
Assault *	STAFF-NO INJURY	0	5	1	59	17	1	7	17	16	8	9	38	9	43	20	250
Assault *	OFN-SERIOUS INJURY	0	3	2	0	0	1	0	6	7	5	0	10	4	5	2	45
Assault *	OFN-INJURY	1	3	0	3	1	2	1	6	8	2	6	17	3	14	8	75
Assault *	OFN-MINOR INJURY	1	3	4	3	1	2	4	9	12	13	11	9	9	28	22	131
Assault *	OFN-NO INJURY	3	5	1	5	2	2	1	1	7	2	3	5	5	13	3	58
Assault *	VIS-SERIOUS INJURY	0	0	0	0	0	0	0	0	0	0	0	0	0	0	0	0
Assault *	VIS-INJURY	0	0	0	0	0	0	1	1	0	0	0	0	0	0	0	1
Assault *	VIS-MINOR INJURY	0	0	0	0	0	0	0	0	0	0	0	1	0	0	0	1
Assault *	VIS-NO INJURY	0	0	0	0	1	0	1	1	1	0	0	0	0	1	0	5
Death	OFN-NATURAL	2	0	0	1	50	0	2	2	0	4	3	3	2	0	0	69
Death	DEATH-OFN-EXEC-ELEC-CHR	0	0	0	0	0	0	0	0	0	0	0	0	0	0	0	0
Death *	OFN-HOMICIDE	0	0	0	0	0	0	0	2	0	0	0	0	0	0	0	2
Death	OFN-EXEC-LETH INJ	0	0	0	1	0	0	0	0	0	0	0	0	0	0	0	1
Death *	OFN-SUICIDE	0	0	0	0	1	1	0	0	0	1	1	0	0	0	1	5
Death	OFN-ACCIDENT	0	0	0	0	0	0	0	1	0	0	0	0	0	0	0	1
Death *	STAFF-HOMICIDE (ON DUTY)	0	0	0	0	0	0	0	0	0	0	1	0	0	0	0	1
Death *	STAFF-SUICIDE (ON DUTY)	0	0	0	0	0	0	0	0	0	0	0	0	0	0	0	0

* Indicates violent incident.

TDOC Incident Summary: FY 2005-2006

Average Population		WCBC	MLCC	TPW	RMSI	DSNF	STSRC	CBCX	TCIP	SCCC	NECX	BMCX	WTSP	HCCC	NWCX	WCFA	SYSTEM
		406	416	733	695	643	981	1028	1091	1628	1800	1530	2475	1963	2285	1486	19158
Death	STAFF-ACCIDENT (ON DUTY)	0	0	0	0	0	0	0	0	0	0	0	0	0	0	0	0
Death	STAFF (ON DUTY)-NATURAL	0	0	0	0	0	0	0	0	0	0	0	0	0	0	0	0
Death	VISITOR	0	0	0	0	0	0	0	0	0	0	0	0	0	0	0	0
Death	* VISITOR-HOMICIDE	0	0	0	0	0	0	0	0	0	0	0	0	0	0	0	0
Death	* VISITOR-SUICIDE	0	0	0	0	0	0	0	0	0	0	0	0	0	0	0	0
Death	VISITOR-ACCIDENT	0	0	0	0	0	0	0	0	0	0	0	0	0	0	0	0
Death	VISITOR-NATURAL	0	0	0	0	0	0	0	0	0	0	0	0	0	0	0	0
Disturbance	TEMP. CONTROL LOSS	0	0	0	1	0	0	1	0	0	0	0	0	0	0	0	2
Disturbance	THREAT CONTROL LOSS	0	0	1	2	0	0	0	4	0	0	0	0	0	2	0	9
Disturbance	MINOR	21	20	60	129	30	30	34	142	169	112	104	305	253	336	205	1950
Drugs	CONFIS-SIGNIF AMT-OFN	1	1	0	8	4	0	8	10	2	10	9	36	6	4	12	111
Drugs	CONFIS-SIGNIF AMT-STAFF	0	0	0	0	0	0	0	0	0	0	0	0	0	0	0	0
Drugs	CONFIS-SIGNIF AMT-VISITOR	0	0	0	0	0	0	1	0	0	0	0	0	0	0	0	1
Drugs	CONFISCATION-OFFENDER	2	4	13	8	13	17	8	26	9	60	43	49	32	38	25	347
Drugs	CONFISCATION-STAFF	0	0	2	0	0	1	1	0	0	0	0	0	0	0	0	4
Drugs	CONFISCATION-VISITOR	0	0	1	0	0	0	0	1	0	0	0	0	1	0	0	3
Drugs	POSSESSION	0	0	1	4	1	1	3	13	11	23	4	27	3	5	3	99
Drugs	SELLING	0	0	3	0	0	1	0	2	0	5	2	3	1	0	0	17
Equip Prob	MAJOR DISRUPTION	0	0	4	7	2	3	3	3	0	2	4	4	0	0	1	30
Equip Prob	MINOR DISRUPTION	1	13	13	66	12	0	14	38	1	1	45	13	1	19	4	241
Escape	* SECURE SUPERVISION	0	0	0	0	0	0	0	0	0	0	1	0	1	0	0	2
Escape	* MIN SECURITY-VIOLENCE	0	0	0	0	0	0	0	0	0	0	0	0	0	0	0	0
Escape	MIN SECURITY UNIT	1	0	0	0	0	0	0	0	0	0	0	0	0	0	0	1
Escape	MIN SEC WORK CREW-SUPV	0	0	0	0	0	0	4	0	0	1	0	0	0	0	0	5
Escape	MIN SEC WORK CREW UNSUPV	0	0	0	0	0	0	0	0	0	0	0	0	0	0	0	0
Escape	FURLOUGH/PASS	0	0	0	0	0	0	0	0	0	0	0	0	0	0	0	0
Escape	ATT. SECURE SUPV	0	0	0	1	0	0	2	0	0	0	0	0	0	0	0	3
Escape	* ATT. MIN SECURITY-VIOLENCE	0	0	0	0	0	0	1	0	0	0	0	0	0	0	0	1
Escape	ATT. MIN SECURITY	0	0	0	0	0	0	1	0	0	0	0	0	0	0	0	1
Escape	Return from escape prior to TOMIS	0	0	0	0	0	0	0	0	0	0	0	0	0	0	0	0
Fire	SER-INJ-PROP DMG->\$500-OPR DISRUP	0	0	0	0	0	0	0	0	0	0	0	0	0	0	0	0
Fire	INJ-PROP DMG->\$500-OPR DISRUP	0	0	0	0	0	0	0	0	0	0	0	0	0	0	0	0
Fire	PROP DMG->\$500-OPER DISRUP	0	0	1	0	0	0	0	0	0	0	0	0	0	0	0	1

*Indicates violent incident.

TDOC Incident Summary: 2005-2006

Average Population		WCBC	MLCC	TPW	RMSI	DSNF	STSRC	CBXC	TCIP	SCCC	NECX	BMCX	WTSP	HCCC	NWCX	WCFA	SYSTEM
		406	416	733	695	643	981	1028	1091	1628	1800	1530	2475	1963	2285	1486	19158
Injury	ACCIDENT-OFN-SERIOUS	1	3	3	2	1	1	0	0	1	0	2	2	1	1	1	19
Injury	ACCIDENT-OFN	22	13	2	9	1	2	8	16	10	6	109	10	7	3	29	247
Injury	ACCIDENT-OFN WRK RELATED	3	3	0	3	0	0	1	5	2	0	0	0	0	0	0	17
Injury	ACCIDENT-STAFF-SERIOUS	0	0	2	3	1	0	0	0	1	1	0	3	1	0	0	12
Injury	ACCIDENT-STAFF	3	14	8	22	7	1	16	25	36	35	16	27	37	38	8	293
Injury	ACCIDENT-VISITOR-SERIOUS	0	0	0	0	0	0	0	0	0	0	0	1	0	0	0	1
Injury	ACCIDENT-VISITOR	0	1	5	3	4	1	4	0	0	3	12	6	1	3	1	44
Injury	* SELF INFLICTED-SERIOUS	0	0	1	4	13	0	1	1	0	0	0	13	1	0	1	35
Injury	* SELF INFLICTED	1	4	2	24	23	2	2	8	58	12	16	46	26	23	26	273
Illness	OFN-SERIOUS-HOSP	9	5	53	2	2	9	12	13	6	1	28	118	11	26	15	310
Illness	STAFF-SERIOUS-HOSP(ON DUTY)	2	5	6	11	5	0	8	2	2	0	1	36	1	8	0	87
Illness	VISITOR-SERIOUS-HOSP	0	0	0	0	0	0	0	0	1	0	0	0	0	0	0	1
Illness	VISITOR	0	0	0	0	0	0	0	0	0	0	0	0	0	0	0	0
Other	BOMB THREAT	0	0	0	0	0	0	0	0	0	0	0	0	0	0	0	0
Other	CONTRABAND	17	33	66	188	121	109	84	182	244	140	127	241	143	224	136	2055
Other	PROP DMG->\$500	0	2	3	5	2	1	15	10	0	1	8	8	0	4	0	59
Other	SEXUAL MISCONDUCT	0	7	20	107	14	22	20	32	120	83	29	110	238	242	20	1064
Other	* Rape	0	0	0	0	0	0	0	1	0	1	1	0	0	0	0	3
Other	* RIOT	0	0	0	0	0	0	0	0	0	0	0	0	0	0	0	0
Other	Sabatage - OPR DISRUP	0	0	0	0	0	0	0	0	0	0	0	0	0	0	0	0
Other	* HOSTAGE SITUATION	0	0	0	0	0	0	0	0	0	0	0	0	0	0	0	0
Other	Epidemic Public Health Threat	0	0	0	0	0	0	0	0	0	0	0	0	0	0	0	0
Other	Participate in STG Activity	5	1	0	2	0	1	2	22	55	18	11	12	7	17	7	160
Other	Possess STG Material	7	0	1	9	2	14	14	37	45	9	10	33	31	48	55	315
Strike	INMATE-OPER.DISRUP	0	0	0	2	0	0	0	0	0	0	0	0	0	0	0	2
Strike	STAFF-OPER DISRUP	0	0	0	0	0	0	0	0	0	0	0	0	0	0	0	0
Suicide	* ATT-SERIOUS INJURY	1	0	1	0	2	0	0	1	0	0	0	1	0	0	0	6
Suicide	* ATTEMPT	0	0	0	1	10	0	1	7	1	2	2	15	2	2	5	48
Use of Force	CHEMICAL AGENTS	0	0	0	3	0	1	0	0	15	7	2	22	23	20	33	126
Use of Force	DEADLY WEAPON	0	0	0	0	0	0	0	0	0	0	0	0	0	0	0	0
Use of Force	ELEC RESTRAINTS	0	0	0	5	0	1	0	2	2	1	3	2	0	7	1	24
Use of Force	LESS THAN LETHAL	0	0	0	0	0	0	0	0	0	0	0	0	0	0	0	0
Use of Force	MEDICAL	0	0	3	0	34	0	0	2	1	0	0	0	0	0	0	40
Use of Force	PHYSICAL	1	3	3	24	11	1	9	19	18	6	7	34	27	7	38	208

* Indicates violent incident.

TDOC Incident Summary: 2006

Average Population		WBBC	MLCC	TPW	RMSI	DSNF	STSRC	CBCX	TCIP	SCCC	NECX	BMCX	WTSP	HCCC	NWCX	WCFA	SYSTEM
		406	416	733	695	643	981	1028	1091	1628	1800	1530	2475	1963	2285	1486	19158
Weapon	AMMUNITION	0	0	0	1	0	0	3	0	0	3	1	0	0	0	0	8
Weapon	AMMUNITION-SIGNIF AMT	0	0	0	0	0	0	0	0	0	0	0	0	0	0	0	0
Weapon	COMMERCIAL FIREARM	0	0	1	0	0	0	1	0	0	0	0	0	0	0	0	2
Weapon	COMMERCIAL KNIFE	1	0	0	1	0	0	4	0	1	2	0	0	0	0	1	10
Weapon	EXPLOSIVE	0	0	0	0	0	0	0	0	0	0	0	0	0	0	0	0
Weapon	EXPLOSIVE-SIGNIF AMT	0	0	0	0	0	0	0	0	0	0	0	0	0	0	0	0
Weapon	HOMEMADE FIREARM	0	0	0	0	0	0	0	0	0	0	0	0	0	0	0	0
Weapon	HOMEMADE KNIFE	1	0	2	9	2	3	1	28	66	38	15	46	25	125	60	421
Weapon	OTHER	3	0	3	6	2	2	3	6	2	0	4	6	2	8	2	49
Weapon	CLUB	0	0	0	2	1	2	0	0	0	0	0	1	0	2	0	8
Weapon	RAW MATERIALS	0	0	0	6	0	0	1	1	4	2	1	6	0	7	5	33
Weapon	CLASS A TOOL	0	1	0	4	0	1	0	2	0	0	2	6	0	3	1	20
Weapon	CLASS B TOOL	1	0	0	0	0	0	0	0	0	0	0	0	0	0	0	1
TOTAL-VIOLENT		7	24	12	122	87	12	21	68	121	51	64	187	70	149	104	1,099
TOTAL - NON-VIOLENT		106	130	277	656	328	225	289	649	827	589	610	1,182	866	1,204	679	8,617
TOTAL		113	154	289	778	415	237	310	717	948	640	674	1,369	936	1,353	783	9,716
Rate per 100 - Violent		1.72	5.78	1.64	17.57	13.53	1.22	2.04	6.23	7.43	2.83	4.18	7.56	3.57	6.52	7.00	5.74
Rate per 100 - Non-Violent		26.09	31.29	37.82	94.46	51.02	22.93	28.11	59.47	50.80	32.73	39.88	47.76	44.13	52.69	45.71	44.98
Rate per 100 - Total		27.82	37.06	39.45	112.02	64.56	24.16	30.15	65.70	58.23	35.56	44.07	55.31	47.69	59.21	52.71	50.72

* Indicates violent incident.

Tennessee Correctional Academy

The Tennessee Correction Academy (TCA), located in the city of Tullahoma, serves as the primary training and staff development center for the Department of Correction. Additionally, the Academy provides training to personnel from the Board of Probation and Parole as well as the Department of Children's Services. Each year, over 6,000 people attend the Academy's numerous pre-service, in-service, or specialized training programs.

TCA, which opened in January 1984, is committed to contributing to the success of the Department through quality job-based professional development for newly-hired and in-service personnel. In 1993, TCA became the second correctional training academy in the nation to be fully accredited by the American Correctional Association.

TCA: Superintendent Michael Dutton

Our Mission

To ensure state of the art training to all employees whom we have the opportunity to serve.

Our Vision

The Tennessee Correction Academy, through a focus on professional service, will set the example for excellence in the delivery of criminal justice training.

Our Goals/Objectives

- Establishing professional development as a clear organizational priority.
- Implementing a targeted training system.
- Operating in a quality environment.



TCA Accomplishments FY 2005-2006

- Total training attendance surpassed 7,000.
- Trained over 2,000 people in various programs either through deploying instructors directly to prison sites or through TCA's "Air Course Academy" distance learning initiative.
- For the first time ever, began deploying entire classes of pre-service cadets to institutions for unannounced unit shake-downs.
- Implementation of a required fitness testing program for all appointed Correctional Emergency Response Team (CERT) members.
- Accomplished the complete revision of the Department's Field Training Officer Manual accompanied by new procedural training.
- Initiated qualification training with the Glock .40 caliber semi-automatic handgun for all of the Department's Transportation Officers.

Specialized Workshops Delivered

- Correctional Emergency Response Team (CERT) Training
- Locksmith School
- Radio Repair and Communications Workshop
- Field Training Officer (FTO) School
- Critical Incident Stress Debriefing Skills Training
- Firearms Instructor School
- Leadership TDOC Workshops

Tennessee Correction Academy Graduates

Fiscal Year	Graduates
2005-2006	1,219
2004-2005	1,199
2003-2004	584
2002-2003	870
2001-2002	1,098
2000-2001	871
1999-2000	830
1998-1999	1,086

Brushy Mountain Correctional Complex

The Brushy Mountain Correctional Complex and the Morgan County Correctional Complex separated in June 2006. Brushy Mountain Correctional Complex (BMCX), a maximum security institution located in Petros, is the reception, classification, and diagnostic center for male felons in East Tennessee. The Morgan County Correctional Complex (MCCX) is a close security institution located in Wartburg.

An expansion project at MCCX is currently underway. Once this expansion is complete in early 2009, the historic Brushy Mountain site will close, while still providing the department with a net gain of 829 operational beds.

Brushy Mountain Correctional Complex: Warden Jim Worthington

Operating Capacity: 584
Security Level: Maximum
Phone: (423) 324-4011

Accomplishments: FY 2005-2006

- T-Crest Work Release positions expanded from eight (8) to sixteen (16).
- Raw water intake for water plant installed.
- Replaced antiquated gas chlorinator with bleach at water plant.
- Installed new roof on gym.



Morgan County Correctional Complex: Warden David Mills

Operating Capacity: 1,003
Security Level: Close
Phone: (423) 346-6641

Accomplishments: FY 2005-2006

- 63.3% pass rate on GED testing for inmates (31 out of 49 passed).
- Purchased a computer, printer, and TV/DVD/VCR combo for Pre-Release programming.
- 65 inmates graduated from vocational programs.
- Initiated transition team to resolve issues related to the expansion.



Charles Bass Correctional Complex

The Charles Bass Correctional Complex (CBCX) is the reception, classification, and diagnostic center for male felons in the Middle Tennessee area. Its primary mission is to classify offenders entering or re-entering the TDOC. The CBCX annex is responsible for providing training to inmates who are nearing the end of their sentences and will be re-entering society. Pre-release inmates must complete a 90-day program including 80 hours of classroom instruction and community service work. Some minimum custody inmates are placed on work release where they work in the community and pay room and board fees.

CBCX is also the location for the Central Transportation System for the TDOC. The Central Transportation System operates across the state, transporting inmates to various institutions, court appearances, and medical appointments.

Each year, CBCX provides over 250,000 hours of community service work to state and local government and non-profit agencies in Davidson County and surrounding areas.

Charles Bass Correctional Complex: Warden Ken Locke

Avg. Daily Population: 1,048
Operating Capacity: 1,099
Security Level: Close
Phone: (615) 350-3361



Accomplishments: FY 2005-2006

- Achieved an 85.7% GED pass rate.
- Implemented the Genesis Transition Center, an 86-bed program designed to prepare offenders for successful release into the community.
- Maintained a violent incident rate 2.04 per 100 inmates, significantly less than the 5.70 rate system-wide.

Lois DeBerry Special Needs Facility

The mission of the Lois DeBerry Special Needs Facility (DSNF) is to provide quality health care, intensive mental health, and sex offender treatment programming in a setting that ensures a safe and secure environment for facility staff and inmates. The standards of care at this institution are commensurate with standards established in the community.

DSNF provides a number of services for the Department, including acute and convalescent health care, intensive mental health intervention, a therapeutic program for sex offenders, and pharmaceutical services. In addition, geriatric, specialty clinics, short-stay surgeries, individual treatment, and diagnostic services that are not available at other facilities are provided to inmates through the transient unit and contract staff at DSNF.

Mental health units are provided for inmates with acute mental health needs. The mental health program is designed to stabilize the inmate and move him through a process where the inmate takes more responsibility for his behavior and mental health. There are units for the mentally challenged, sex offender treatment, and a sheltered workshop program for inmates.

DeBerry Special Needs Facility: Acting Warden Gil Mathis

Avg. Daily Population: 653
Operating Capacity: 736
Security Level: Maximum
Phone: (615) 350-2700



Accomplishments: FY 2005-2006

- Completed ACA accreditation, meeting or exceeding the standards set forth by the Association. Received a recommendation for re-accreditation.
- Piloted a program to offer healthier choices of snacks to inmates through the commissary. This program seeks to ensure that the state's resources are not wasted by inmates eating foods negating the health benefits gained from the medical care they receive at the institution.
- Began working towards the goal of being a smoke-free institution by October 2006. DSNF wants to serve as an example for the staff of other institutions on their way to being tobacco free.

Mark Luttrell Correctional Center

The Mark Luttrell Correctional Center (MLCC), which includes a minimum security annex, is located in Memphis, Tennessee, and is one of two female facilities in the state prison system. Opened in 1976 as a male institution, the facility was converted for females in June 1999.

Major programs at MLCC include educational and library services, counseling, job assignments, religious services, medical and mental health. In addition, MLCC provides a number of support group programs such as Alcoholics Anonymous, therapeutic community programs, and drug education.

Mark Luttrell Correctional Center: Warden Reuben Hodge

Avg. Daily Population: 419
Operating Capacity: 436
Security Level: Close
Phone: (901)372-2080



Accomplishments: FY 2005-2006

- PREA orientation of the existing inmate population was completed.
- Successfully completed annual inspections.
- 92% of inmates who took the GED test passed.
- Expanded efforts to intercept illicit drugs from entering the institution.
- Repaired warehouse dock entrance.

Northeast Correctional Complex

The Northeast Correctional Complex (NECX), is located in Mountain City with annexes in Johnson City and Carter County. NECX operates community service crews which provide thousands of hours of labor to local government and non-profit organizations each year.

NECX offers intensive counseling programs for drugs and anger management, and operates four industries including the data plant (employs approximately 50 inmates), the printing plant (employs 25 inmates), and the sewing plant (employs 50 inmates). In addition NECX is part of a joint venture with a local company that helps recycle toner cartridges (employs 50 inmates). Inmates may also attend Adult Basic Education and GED classes or participate in various vocational programs.

Northeast Correctional Complex: Warden Howard Carlton

Avg. Daily Population: 1,824
Operating Capacity: 1,819
Security Level: Maximum
Phone: (423)727-7387



Accomplishments: FY 2005-2006

- Implemented a mandatory, full-time pre-release program for all inmates expiring their sentence.
- Fully implemented the Prison Rape Elimination Act (PREA). NECX designated a PREA Coordinator to ensure all inmates are screened for their propensity for both sexual predatory behavior and potential for victimization. NECX also provides immediate crisis intervention following victim disclosure or identification.
- Began the first phase of the new 800 MGHZ Quantar Smartnet Trunk state of the art radio system that will enhance radio coverage and eliminate many dead zones, as well as enhance communication, especially during emergencies.
- Secured funding to update and expand the NECX sewer line.
- Began implementation of the TDOC Drug Detection Dog program, a valuable tool in preventing the introduction of drugs into the facility and identifying drugs that already exist inside the facility.

Northwest Correctional Complex

The Northwest Correctional Complex (NWCX) is located in Tiptonville on 249 acres in the rural northwest corner of Tennessee. NWCX is comprised of the main compound, a minimum security unit, and the annex. The main compound houses all custody levels except maximum; the minimum security unit houses the community service crews; the Annex houses minimum restricted custody inmates and youthful offenders.

Due to the lack of industry at NWCX, the focus has been on education and community service. The educational programs include special education services, Adult Basic Education, GED preparation, Title I, and vocational programs.

Northwest Correctional Complex: Warden Tommy Mills

Avg. Daily Population: 2,314
Operational Capacity: 2,377
Security Level: Close
Phone: (731)253-5000



Accomplishments: FY 2005-2006

- Successfully completed The American Correction Association (ACA) audit. The facility received a score of 100% in mandatory standards and a score of 98.9 on non-mandatory standards.
- The institutional annual inspection was conducted, with a total of 549 items being reviewed. Only two (2) items were found in non-compliance.
- The City of Tiptonville, with departmental assistance, began the construction phase of upgrading the facility's lift station and sewer system along with applicable city systems. These upgrades will help eliminate storage and pump problems.
- 56 inmates took the GED test; 39 passed for a pass rate of 70%.
- 81 inmates completed various vocational classes.

Riverbend Maximum Security Institution

Riverbend Maximum Security Institution (RMSI) opened in 1989, replacing the Tennessee State Penitentiary. RMSI's overall mission is to manage high-risk male offenders classified as either maximum or close security. These behaviors require more intense control, supervision, and structure than are offered at other institutions.

RMSI is also the location for housing for the majority of Tennessee's inmates sentenced to death and is tasked with carrying out that sentence in the manner and at the time ordered by the court.

In addition, RMSI houses a number of medium and minimum security inmates who attend educational programming or work in institutional support jobs. Education programs at the prison include GED and Adult Basic Education. There are also vocational classes available for commercial cleaning, industrial maintenance, and cabinet making/millwork. Additionally, TRICOR manages a data entry plant and print shop at the prison. Inmates not involved in academic, vocational, or industry programs are required to work in support service roles throughout the facility.

Riverbend Maximum Security Institution: Warden Ricky Bell

Avg. Daily Population: 707
Operational Capacity: 714
Security Level: Maximum
Phone: (615)350-3100



Accomplishments: FY 2005-2006

- 23 inmates graduated from the pre-release educational program.
- Electronic security upgrade completed.
- All staff received workplace harassment training.
- 13 inmates successfully completed the GED program.
- 26 inmates received certificates from vocational programs.

Southeastern Tennessee State Regional Correctional Facility

Southeastern Tennessee State Regional Correctional Facility (STSRC), located near Pikeville, opened in 1980 as one of three regional prisons proposed by TDOC and approved by legislature during the early 1970's.

Mental health services offered include substance abuse, crisis intervention, and sex offender Phase II treatment. Strategic threat group (gangs), anger management, violent offender, self awareness, skills for family living, family life education, assertiveness and stress management programs are also available.

Academic programs, including GED and Adult Basic Education, as well as six vocational programs are also offered. The industrial plant at STSRC, managed and operated by TRICOR, is involved in manufacturing items for free world corporations. Inmates employed by the industries plant are involved in the Prison Industry Enhancement Program (PIE). Additionally, STSRC's farm, comprised of approximately 2,200 acres, is involved with milk, egg, and limited beef production.

Southeastern Tennessee State Regional Correctional Facility:

Warden Virginia Lewis

Avg. Daily Population: 950
Operational Capacity: 971
Security Level: Close
Phone: (423)881-3251



Accomplishments 2005-2006

- Received re-accreditation in September 2005.
- Graduated the first class of 19 inmates from the New Beginnings substance abuse therapeutic community program.
- Completed PREA evaluations and reviewed files on all inmates identified as victims and predators.
- Maintained a turnover rate of 11%.
- Maintained a violent incident rate of 1.22% and a non-violent rate of 22.93% per 100 inmates, the lowest rate of any facility.

Tennessee Prison for Women

The Tennessee Prison for Women (TPW), located in Nashville serves as the reception and classification center for female offenders. TPW houses all security level inmates, from work release to those under the death sentence.

TPW offers academic courses that include Adult Basic Education, GED, and special education. Vocational courses including cosmetology, culinary arts, and building maintenance are also offered. TRICOR provides job opportunities through the TCAP (Tennessee Comprehensive Assessment Program) test distribution center, data entry services, and the TennCare hotline. TPW's community work crews provide an assortment of services and inmates who meet established criteria may be placed on release with selected government agencies.

Inmates also have access to a full range of psychological intervention programs including substance and sexual abuse, anger management, and co-dependency. TPW has a weekend child visitation program for mothers and grandmothers that has received national recognition. The YWCA also operates a pre-release job readiness/life skills initiative at the transition center.

Tennessee Prison for Women: Warden Jewel Steele

Avg. Daily Population: 740
Operating Capacity: 744
Security Level: Maximum
Phone: (615)741-1255



Accomplishments 2005-2006

- A total of 30 students took the GED. 26 students passed for a GED pass rate of 84%.
- The education department gained two teacher positions for vocational studies; one position in Culinary Arts and one Industrial Cleaning Apprentice position.
- Completed a computer lab in Building 4.
- Opened the NewStart Transition Community, a collaborative between the YWCA and TPW, to prepare participants for their return to the community.
- Reduced the turnover rate from 72.7% in FY 04-05 to 58.9% in FY 05-06.

Turney Center Industrial Prison

Turney Center Industrial Prison (TCIP) is located in Only in Hickman County. TCIP has a strong emphasis on prison industry.

TCIP includes a minimum security annex outside the secure perimeter housing inmates employed on the farm, community service crews, and on support services crews outside the perimeter.

Academic programs available at the facility include GED and Adult Basic Education. Vocational programs include cosmetology, cabinet making and mill work, industrial maintenance, landscaping, vocational office education, commercial food services, and commercial cleaning. TRICOR industry programs include the wood, metal, and paint plants. The farm includes a beef cattle operation.

Turney Center Industrial Prison: Warden Wayne Brandon

Avg. Daily Population: 1,101
Operational Capacity: 1,113
Security Level: Close
Phone: (931)729-5161



Accomplishments 2005-2006

- Completed Annex roof project.
- Refurbished two pumps and replaced one pump at the water treatment plant.
- Overhauled the boiler room operation.

Wayne County Boot Camp

In 1989, the Wayne County Boot Camp (WCBC) was reorganized as a Special Alternative Incarceration Unit Program, or "Boot Camp." It is a highly disciplined, military-style training program combined with various treatment programs. Eligible offenders are under 35 years of age and convicted of non-violent crimes with sentences of six years or less.

Military training consists of drill and ceremony, physical training, and respect for authority. Inmates are involved in support jobs at the facility and also provide labor for many community service projects. Inmates participate in the boot camp program for 90 to 120 days.

In February 1993, the mission of the boot camp was modified to include 50 beds for geriatric inmates, thereby reducing the boot camp program space to 100. Geriatric inmates must be 55 years of age or older and able to participate in a work program, within 10 years of their release eligibility date, and must be minimum direct or minimum trusty custody level. They will generally be provided with access to the same programs as other TDOC inmates and may also provide labor for community service projects. WCBC also houses a number of technical violators.

Wayne County Boot Camp: Warden Malcolm Davis

Avg. Daily Population: 404
Operational Capacity: 446
Security Level: Minimum
Phone: (931)676-3345



Accomplishments FY 2005-2006

- Maintained a correctional officer turnover rate of 11.7%, significantly lower than the system-wide average of 25%.
- Achieved a GED pass rate of 70%.
- Maintained a violent incident rate of 1.72 per 100 inmates.

West Tennessee State Penitentiary

West Tennessee State Penitentiary (WTSP), located west of Henning, is the largest facility for male felons in the TDOC. WTSP is a multi-mission institutional complex and serves as the reception and classification center for West Tennessee.

Academic courses include Adult Basic Education, GED, and special education. Vocational courses include commercial cleaning, upholstery, tailoring, residential construction, personal computing, office occupations, small engine repair, barbering, and culinary arts. TRICOR provides training and job opportunities through three manufacturing operations and a farming operation. Fruits and produce grown on the institution's farm help offset food costs at a number of TDOC institutions.

West Tennessee State Penitentiary: Warden Tony Parker

Avg. Daily Population: 2,516
Operational Capacity: 2,505
Security Level: Maximum
Phone: (731)738-5044



Accomplishments FY 2005-2006

- WTSP's first Masonry class was established with the hiring of a qualified instructor.
- Reduced inmate grievances from 2,339 in FY 04-05 to 1793 in FY 05-06.
- Continued to partner with UT Martin to offer college courses in Sociology, English, Criminal Justice, Spanish, and History to approximately 60 staff.
- Implemented additional security measures to reduce the introduction of contraband.
- Implemented an enhanced drug detection program with the use of a trained canine and handler.
- Implemented steps to reduce staff overtime.
- Increased vegetable production during the harvest season.

Hardeman County Correctional Facility

Hardeman County Correctional Facility (HCCF) is a private, time-building institution with a medium security designation. The Hardeman County Correctional Facilities Corporation owns HCCF and contracts with Corrections Corporation of America (CCA) for its management. HCCF has an operational capacity of 2,016 beds.

Whiteville Correctional Facility

Whiteville Correctional Facility (WTCF) is a private, time-building institution with a medium security designation. WTCF is managed by CCA and began housing TDOC felons in 2002. WTCF has an operational capacity of 1,536 beds.

South Central Correctional Facility

South Central Correctional Facility (SCCF) is a private, time-building institution with a medium security designation. SCCF is a state owned facility and is managed by a contract with CCA. SCCF has an operational capacity of 1,676.

www.state.tn.us/correction

**TENNESSEE DEPARTMENT OF CORRECTION
RACHEL JACKSON BUILDING
320 SIXTH AVENUE NORTH
NASHVILLE, TN. 37243
615-741-1000**



Tennessee Department of Correction
Authorization #329139, 200 copies, September 2006
This public document was promulgated at a cost of 10.00 per copy.