

TENNESSEE ECONOMIC ANALYSIS

September 2024

NOT TO BE RELEASED BEFORE:

TIME: 1:30 PM CT

DAY: Thursday, October 17, 2024

Prepared by:

Tennessee Department of Labor and Workforce Development

Workforce Insights, Research and Reporting Engine Division

Table of Contents

Economic Indicators

	<u>Page</u>
Briefing Packet Summary	1
Labor Force Estimates Summary - Household Survey	2
Seasonally Adjusted Nonfarm Employment	3
Major Changes in Seasonally Adjusted Nonfarm Employment	3
Business Survey - Not Seasonally Adjusted	4-5

Appendix

Unemployment Rates, 2013 - 2024	6
Hours and Earnings of Production Workers	7

Graphs

Tennessee Unemployment Rates	8
Unemployment Rates - U.S. and Tennessee	8
Goods - Producing Jobs in Tennessee	9
Service - Providing Jobs in Tennessee	9

BRIEFING PACKET SUMMARY

September 2024 pre.

Unemployment Rates

Tennessee	September 2023	August 2024 rev.	September 2024 pre.	Change From:	
				Year Ago	Month Ago
Not Seasonally Adjusted	3.3%	3.5%	3.6%	0.3%	0.1%
Seasonally Adjusted	3.4%	3.1%	3.2%	-0.2%	0.1%

United States

Not Seasonally Adjusted	3.6%	4.4%	3.9%	0.3%	-0.5%
Seasonally Adjusted	3.8%	4.2%	4.1%	0.3%	-0.1%

Hours and Earnings of Production Workers (Manufacturing)

Tennessee	August 2024 rev.	September 2024 pre.	Change
Average Weekly Earnings	\$973.60	\$986.11	\$12.51
Average Weekly Hours	40.0	40.2	0.2
Average Hourly Earnings	\$24.34	\$24.53	\$0.19

United States

Average Weekly Earnings	\$1141.11	\$1156.97	\$15.86
Average Weekly Hours	40.9	41.1	0.2
Average Hourly Earnings	\$27.90	\$28.15	\$0.25

Summary

Over the month, Tennessee's seasonally adjusted unemployment rate increased to 3.2% from August's 3.1%.

Over the past year, Tennessee's seasonally adjusted unemployment rate decreased to 3.2% from last year's 3.4%.

Over the year, nonfarm employment increased by 31,100 jobs. The largest increases were Education & Health Services, Trade, Transportation, & Utilities, and Other Services.

Over the month, total nonfarm employment increased by 3,300 jobs. The largest increases were in Health Care & Social Assistance, Retail Trade, and Professional, Scientific, & Technical Services.

Labor Force Estimates Survey Household Survey

Tennessee* Not Seasonally Adjusted	September 2023	Revised August 2024	Preliminary September 2024	Change from September 2023 to September 2024		Change from August 2024 to September 2024	
Civilian Labor Force	3,375,989	3,417,798	3,407,556	31,567	0.9%	-10,242	-0.3%
Labor Force Participation Rate	59.6%	59.6%	59.3%	-0.3	percentage points	-0.3	percentage points
Employment	3,263,542	3,297,890	3,284,841	21,299	0.7%	-13,049	-0.4%
Unemployment	112,447	119,908	122,715	10,268	9.1%	2,807	2.3%
Unemployment Rate	3.3%	3.5%	3.6%	0.3	percentage points	0.1	percentage points

Seasonally Adjusted

Civilian Labor Force	3,382,329	3,412,107	3,413,818	31,489	0.9%	1,711	0.1%
Labor Force Participation Rate	59.7%	59.5%	59.4%	-0.3	percentage points	-0.1	percentage points
Employment	3,267,998	3,306,244	3,303,118	35,120	1.1%	-3,126	-0.1%
Unemployment	114,331	105,863	110,700	-3,631	-3.2%	4,837	4.6%
Unemployment Rate	3.4%	3.1%	3.2%	-0.2	percentage points	0.1	percentage points

United States** Not Seasonally Adjusted	September 2023	Revised August 2024	Preliminary September 2024	Change from September 2023 to September 2024		Change from August 2024 to September 2024	
Civilian Labor Force	167,718,000	168,763,000	168,569,000	851,000	0.5%	-194,000	-0.1%
Labor Force Participation Rate	62.7%	62.8%	62.6%	-0.1	percentage points	-0.2	percentage points
Employment	161,669,000	161,348,000	162,046,000	377,000	0.2%	698,000	0.4%
Unemployment	6,049,000	7,415,000	6,524,000	475,000	7.9%	-891,000	-12.0%
Unemployment Rate	3.6%	4.4%	3.9%	0.3	percentage points	-0.5	percentage points

Seasonally Adjusted

Civilian Labor Force	167,897,000	168,549,000	168,699,000	802,000	0.5%	150,000	0.1%
Labor Force Participation Rate	62.8%	62.7%	62.7%	-0.1	percentage points	0.0	percentage points
Employment	161,550,000	161,434,000	161,864,000	314,000	0.2%	430,000	0.3%
Unemployment	6,347,000	7,115,000	6,834,000	487,000	7.7%	-281,000	-3.9%
Unemployment Rate	3.8%	4.2%	4.1%	0.3	percentage points	-0.1	percentage points

* Error range for Tennessee estimates cannot be computed

** Error range for U.S. estimates is +/- 0.2%

Seasonally Adjusted Nonfarm Employment

(numbers in thousands)

Annual Change Monthly Change

	September 2023	August 2024 rev.	September 2024	September 2023 to September 2024		August 2024 to September 2024	
				Net Chg.	% chg.	Net Chg.	% chg.
				Total Non-Farm	3,305.7	3,333.5	3,336.8
Mining, Logging and Construction	159.1	162.8	161.2	2.1	1.3%	-1.6	-1.0%
Mining and Logging	4.6	4.6	4.6	0.0	0.0%	0.0	0.0%
Construction	154.5	158.2	156.6	2.1	1.4%	-1.6	-1.0%
Manufacturing	359.8	362.5	362.6	2.8	0.8%	0.1	0.0%
Durable Goods Manufacturing	229.9	234.4	234.7	4.8	2.1%	0.3	0.1%
Non-Durable Goods Manufacturing	129.9	128.1	127.9	-2.0	-1.5%	-0.2	-0.2%
Trade, Transportation, and Utilities	683.5	687.5	689.6	6.1	0.9%	2.1	0.3%
Wholesale Trade	134.4	136.3	137.6	3.2	2.4%	1.3	1.0%
Retail Trade	344.5	346.8	348.3	3.8	1.1%	1.5	0.4%
Transportation, Warehousing, and Utilities	204.6	204.4	203.7	-0.9	-0.4%	-0.7	-0.3%
Information	54.5	54.4	54.4	-0.1	-0.2%	0.0	0.0%
Financial Activities	183.7	182.5	182.6	-1.1	-0.6%	0.1	0.1%
Finance and Insurance	140.7	141.0	141.1	0.4	0.3%	0.1	0.1%
Real Estate, Rental, and Leasing	43.0	41.5	41.5	-1.5	-3.5%	0.0	0.0%
Professional and Business Services	455.2	445.1	447.2	-8.0	-1.8%	2.1	0.5%
Professional, Scientific, and Technical Services	174.6	180.2	181.6	7.0	4.0%	1.4	0.8%
Management of Companies and Enterprises	56.5	56.9	57.2	0.7	1.2%	0.3	0.5%
Administrative, Support, and Waste Services	224.1	208.0	208.4	-15.7	-7.0%	0.4	0.2%
Education and Health Services	480.4	502.1	504.2	23.8	5.0%	2.1	0.4%
Educational Services	68.7	69.7	68.9	0.2	0.3%	-0.8	-1.1%
Health Care and Social Assistance	411.7	432.4	435.3	23.6	5.7%	2.9	0.7%
Leisure and Hospitality	360.9	361.1	360.1	-0.8	-0.2%	-1.0	-0.3%
Arts, Entertainment, and Recreation	47.8	47.6	47.3	-0.5	-1.0%	-0.3	-0.6%
Accommodation and Food Services	313.1	313.5	312.8	-0.3	-0.1%	-0.7	-0.2%
Other Services	127.3	131.4	130.8	3.5	2.7%	-0.6	-0.5%
Government	441.3	444.1	444.1	2.8	0.6%	0.0	0.0%
Federal Government	56.6	58.5	58.7	2.1	3.7%	0.2	0.3%
State Government	96.6	95.5	95.7	-0.9	-0.9%	0.2	0.2%
Local Government	288.1	290.1	289.7	1.6	0.6%	-0.4	-0.1%

Major Changes in Seasonally Adjusted Nonfarm Employment (in thousands)

I. Monthly Change (from August 2024 rev. to September 2024 pre.)

	August 2024 rev.	September 2024 pre.	Change
A. Major Employment Increases			
Health Care and Social Assistance	432.4	435.3	2.9
Retail Trade	346.8	348.3	1.5
Professional, Scientific, and Technical Services	180.2	181.6	1.4
B. Major Employment Decreases			
Construction	158.2	156.6	-1.6
Educational Services	69.7	68.9	-0.8
Transportation, Warehousing, and Utilities	204.4	203.7	-0.7

II. Yearly Change (from September 2023 to September 2024 pre.)

	September 2023	September 2024 pre.	Change
A. Major Employment Increases			
Education and Health Services	480.4	504.2	23.8
Trade, Transportation, and Utilities	683.5	689.6	6.1
Other Services	127.3	130.8	3.5
B. Major Employment Decreases			
Administrative, Support, and Waste Services	224.1	208.4	-15.7
Non-Durable Goods Manufacturing	129.9	127.9	-2.0
Real Estate, Rental, and Leasing	43.0	41.5	-1.5

BUSINESS SURVEY - Not Seasonally Adjusted

Estimated Nonfarm Employment by Industry*

(numbers in thousands)	September 2023	August 2024 rev.	September 2024	Annual Change		Monthly Change	
				September 2023 to September 2024		August 2024 to September 2024	
				Net Chg.	% chg.	Net Chg.	% chg.
Total Non-Farm	3,313.5	3,322.6	3,345.8	32.3	1.0%	23.2	0.7%
Total Private	2,865.9	2,895.2	2,896.2	30.3	1.1%	1.0	0.0%
Goods Producing	519.6	526.6	524.7	5.1	1.0%	-1.9	-0.4%
Mining, Logging and Construction	160.3	164.5	162.2	1.9	1.2%	-2.3	-1.4%
Manufacturing	359.3	362.1	362.5	3.2	0.9%	0.4	0.1%
Durable Goods Manufacturing	229.5	234.4	234.8	5.3	2.3%	0.4	0.2%
Wood Products	13.7	13.8	13.8	0.1	0.7%	0.0	0.0%
Non-Metallic Mineral Products	15.3	15.5	15.6	0.3	2.0%	0.1	0.6%
Primary Metal Products	10.9	11.1	11.1	0.2	1.8%	0.0	0.0%
Fabricated Metal Products	41.6	42.8	43.0	1.4	3.4%	0.2	0.5%
Machinery Manufacturing	24.2	24.9	25.0	0.8	3.3%	0.1	0.4%
Computer and Electronic Products	7.7	7.9	8.0	0.3	3.9%	0.1	1.3%
Electrical Equipment and Appliances	18.2	18.7	18.7	0.5	2.7%	0.0	0.0%
Transportation Equipment	73.4	75.0	74.8	1.4	1.9%	-0.2	-0.3%
Furniture and Related Products	8.6	8.7	8.7	0.1	1.2%	0.0	0.0%
Miscellaneous Durable Manufacturing	15.9	16.0	16.1	0.2	1.3%	0.1	0.6%
Non-Durable Goods Manufacturing	129.8	127.7	127.7	-2.1	-1.6%	0.0	0.0%
Food Manufacturing	39.9	39.6	39.7	-0.2	-0.5%	0.1	0.3%
Beverage and Tobacco Products	7.4	7.1	7.1	-0.3	-4.1%	0.0	0.0%
Paper Manufacturing	13.2	13.1	13.1	-0.1	-0.8%	0.0	0.0%
Printing and Related Support Activities	8.1	7.9	7.9	-0.2	-2.5%	0.0	0.0%
Chemical Manufacturing	26.9	26.5	26.5	-0.4	-1.5%	0.0	0.0%
Plastics and Rubber Products	25.1	24.4	24.4	-0.7	-2.8%	0.0	0.0%
Service Providing	2,793.9	2,796.0	2,821.1	27.2	1.0%	25.1	0.9%
Private Service Providing (Service Providing Less Government)	2,346.3	2,368.6	2,371.5	25.2	1.1%	2.9	0.1%
Trade, Transportation, and Utilities	678.2	682.4	685.6	7.4	1.1%	3.2	0.5%
Wholesale Trade	134.1	136.4	137.8	3.7	2.8%	1.4	1.0%
Merchant wholesalers, Durable Goods	78.4	80.5	82.1	3.7	4.7%	1.6	2.0%
Merchant wholesalers, Non-Durable Goods	48.4	48.7	48.5	0.1	0.2%	-0.2	-0.4%
Wholesale Electronic Markets	7.3	7.2	7.2	-0.1	-1.4%	0.0	0.0%
Retail Trade	339.8	343.5	345.3	5.5	1.6%	1.8	0.5%
Motor Vehicle and Parts Dealers	48.1	47.8	47.3	-0.8	-1.7%	-0.5	-1.0%
Furniture and Home Furnishings Stores	18.4	18.2	18.6	0.2	1.1%	0.4	2.2%
Building Material and Garden Supply Stores	34.1	32.7	32.5	-1.6	-4.7%	-0.2	-0.6%
Food and Beverage Stores	59.0	61.2	61.5	2.5	4.2%	0.3	0.5%
Health and Personal Care Stores	23.9	23.0	23.5	-0.4	-1.7%	0.5	2.2%
Gasoline Stations	27.1	28.4	28.4	1.3	4.8%	0.0	0.0%
Clothing and Clothing Accessories Stores	21.6	22.0	21.9	0.3	1.4%	-0.1	-0.5%
Sporting Goods, Hobby, Book, and Music Stores	30.3	31.1	31.7	1.4	4.6%	0.6	1.9%
General Merchandise Stores	77.3	79.1	79.9	2.6	3.4%	0.8	1.0%
Transportation, Warehousing, and Utilities	204.3	202.5	202.5	-1.8	-0.9%	0.0	0.0%
Utilities	4.4	4.3	4.3	-0.1	-2.3%	0.0	0.0%
Transportation and Warehousing	199.9	198.2	198.2	-1.7	-0.9%	0.0	0.0%
Information	54.4	54.1	53.8	-0.6	-1.1%	-0.3	-0.6%
Financial Activities	184.3	184.1	183.6	-0.7	-0.4%	-0.5	-0.3%
Finance and Insurance	140.7	141.9	141.6	0.9	0.6%	-0.3	-0.2%
Real Estate, Rental, and Leasing	43.6	42.2	42.0	-1.6	-3.7%	-0.2	-0.5%
Professional and Business Services	453.2	447.5	449.2	-4.0	-0.9%	1.7	0.4%
Professional, Scientific, and Technical Services	173.4	179.7	180.9	7.5	4.3%	1.2	0.7%
Management of Companies and Enterprises	56.5	57.1	57.3	0.8	1.4%	0.2	0.4%
Administrative, Support, and Waste Services	223.3	210.7	211.0	-12.3	-5.5%	0.3	0.1%
Education and Health Services	483.1	498.0	507.4	24.3	5.0%	9.4	1.9%
Educational Services	70.4	64.6	70.1	-0.3	-0.4%	5.5	8.5%
Health Care and Social Assistance	412.7	433.4	437.3	24.6	6.0%	3.9	0.9%
Ambulatory Health Care Services	172.6	183.2	185.5	12.9	7.5%	2.3	1.3%
Hospitals	123.8	128.4	129.5	5.7	4.6%	1.1	0.9%
Nursing and Residential Care Facilities	59.3	62.0	62.1	2.8	4.7%	0.1	0.2%
Social Assistance	57.0	59.8	60.2	3.2	5.6%	0.4	0.7%
Leisure and Hospitality	365.7	370.7	361.6	-4.1	-1.1%	-9.1	-2.5%
Arts, Entertainment, and Recreation	50.1	52.0	49.1	-1.0	-2.0%	-2.9	-5.6%
Accommodation and Food Services	315.6	318.7	312.5	-3.1	-1.0%	-6.2	-1.9%
Accommodation	38.6	38.7	38.7	0.1	0.3%	0.0	0.0%
Food Services and Drinking Places	277.0	280.0	273.8	-3.2	-1.2%	-6.2	-2.2%

Other Services	127.4	131.8	130.3	2.9	2.3%	-1.5	-1.1%
Government	447.6	427.4	449.6	2.0	0.4%	22.2	5.2%
Federal Government	56.6	58.3	58.2	1.6	2.8%	-0.1	-0.2%
State Government	99.3	89.5	98.9	-0.4	-0.4%	9.4	10.5%
State Government Educational Services	58.0	47.2	56.8	-1.2	-2.1%	9.6	20.3%
State Government Excluding Education	41.3	42.3	42.1	0.8	1.9%	-0.2	-0.5%
Local Government	291.7	279.6	292.5	0.8	0.3%	12.9	4.6%
Local Government Educational Services	147.4	130.0	143.7	-3.7	-2.5%	13.7	10.5%
Local Government Excluding Education	144.3	149.6	148.8	4.5	3.1%	-0.8	-0.5%

* Estimates include all full- and part-time nonagricultural wage and salary employees who worked during, or received pay for, any part of the pay period which include the 12th of the month. This is a count of jobs by place of work. Agricultural workers, proprietors, self-employed persons, workers in private households, and unpaid family workers are excluded.

UNEMPLOYMENT RATES, 2013-2024
U.S. & Tennessee, Seasonally Adjusted & Not Seasonally Adjusted

	2013				2014				2015				2016			
	U.S.		TN		U.S.		TN		U.S.		TN		U.S.		TN	
	Seas. Adj.	Not Seas. Adj.	Seas. Adj.	Not Seas. Adj.	Seas. Adj.	Not Seas. Adj.	Seas. Adj.	Not Seas. Adj.	Seas. Adj.	Not Seas. Adj.	Seas. Adj.	Not Seas. Adj.	Seas. Adj.	Not Seas. Adj.	Seas. Adj.	Not Seas. Adj.
Jan	8.0	8.5	8.0 -	8.7 *	6.6	7.0	6.9 *	7.1 *	5.7	6.1	6.1 *	6.6 *	4.8	5.3	4.8 -	5.0
Feb	7.7	8.1	8.0 *	8.2 *	6.7	7.0	6.8 *	7.1 *	5.5	5.8	6.1 *	6.2 *	4.9	5.2	4.7	4.8
Mar	7.5	7.6	8.0 *	7.9 *	6.7	6.8	6.8 *	6.9 *	5.4	5.6	6.0 *	5.9 *	5.0	5.1	4.7	4.7
Apr	7.6	7.1	8.0 *	7.4 *	6.2	5.9	6.7 *	6.0 *	5.4	5.1	5.9 *	5.3 *	5.1	4.7	4.6	4.3
May	7.5	7.3	7.9 *	7.6 *	6.3	6.1	6.7 *	6.3 *	5.6	5.3	5.8 *	5.6 *	4.8	4.5	4.7	4.2
Jun	7.5	7.8	7.9 *	8.5 *	6.1	6.3	6.7 *	7.1 *	5.3	5.5	5.7 *	6.2 *	4.9	5.1	4.7	5.2 *
Jul	7.3	7.7	7.8 *	8.2 *	6.2	6.5	6.6 *	7.3 *	5.2	5.6	5.5 *	6.0 *	4.8	5.1	4.8 -	5.2 *
Aug	7.2	7.3	7.7 *	7.7 *	6.1	6.3	6.6 *	6.9 *	5.1	5.2	5.4 *	5.5 *	4.9	5.0	4.8	5.0 -
Sep	7.2	7.0	7.6 *	7.5 *	5.9	5.7	6.5 *	6.4 *	5.0	4.9	5.3 *	5.2 *	5.0	4.8	4.9	4.9 *
Oct	7.2	7.0	7.4 *	7.5 *	5.7	5.5	6.4 *	6.1 *	5.0	4.8	5.1 *	5.0 *	4.9	4.7	4.9 -	4.7 -
Nov	6.9	6.6	7.3 *	6.9 *	5.8	5.5	6.3 *	6.1 *	5.1	4.8	5.0	4.9 *	4.7	4.4	4.8	4.5 *
Dec	6.7	6.5	7.1 *	6.8 *	5.6	5.4	6.2 *	5.9 *	5.0	4.8	4.9	4.7	4.7	4.5	4.7 -	4.5 -
Avg		7.4		7.8 *		6.2		6.6 *		5.3		5.6 *		4.9		4.7
	2017				2018				2019				2020			
	U.S.		TN		U.S.		TN		U.S.		TN		U.S.		TN	
	Seas. Adj.	Not Seas. Adj.	Seas. Adj.	Not Seas. Adj.	Seas. Adj.	Not Seas. Adj.	Seas. Adj.	Not Seas. Adj.	Seas. Adj.	Not Seas. Adj.	Seas. Adj.	Not Seas. Adj.	Seas. Adj.	Not Seas. Adj.	Seas. Adj.	Not Seas. Adj.
Jan	4.7	5.1	4.6	5.0	4.0	4.5	3.5	3.8	4.0	4.4	3.5	3.9	3.6	4.0	3.5	3.7
Feb	4.6	4.9	4.4	4.6	4.1	4.4	3.5	3.6	3.8	4.1	3.4	3.4	3.5	3.8	3.5 -	3.4
Mar	4.4	4.6	4.2	4.1	4.0	4.1	3.5	3.5	3.8	3.9	3.4	6.4	4.4	4.5	3.5	3.9
Apr	4.4	4.1	3.9	3.4	4.0	3.7	3.5	3.1	3.7	3.3	3.4	2.9	14.8	14.4	15.8 *	15.0 *
May	4.4	4.1	3.7	3.2	3.8	3.6	3.5	3.1	3.6	3.4	3.3	3.1	13.2	13.0	12.1	11.8
Jun	4.3	4.5	3.6	4.1	4.0	4.2	3.5	4.1	3.6	3.8	3.2	3.8 -	11.0	11.2	10.2	10.8
Jul	4.3	4.6	3.5	3.9	3.8	4.1	3.5	3.9	3.7	4.0	3.2	3.7	10.2	10.5	9.0	10.1
Aug	4.4	4.5	3.4	3.6	3.8	3.9	3.5	3.6	3.6	3.8	3.2	3.3	8.4	8.5	7.6	7.7
Sep	4.3	4.1	3.4	3.2	3.7	3.6	3.5	3.4	3.5	3.3	3.3	3.1	7.8	7.7	7.1	6.9
Oct	4.2	3.9	3.4	3.3	3.8	3.5	3.5	3.4	3.6	3.3	3.3	3.3 -	6.8	6.6	6.3	5.9
Nov	4.2	3.9	3.4	3.2	3.8	3.5	3.5	3.1	3.6	3.3	3.4	3.1	6.7	6.4	5.9	5.3
Dec	4.1	3.9	3.5	3.2	3.9	3.7	3.5	3.2	3.6	3.4	3.4	3.1	6.7	6.5	5.6	5.3
Avg		4.4		3.7		3.9		3.5		3.7		3.3		8.1		7.4
	2021				2022				2023				2024			
	U.S.		TN		U.S.		TN		U.S.		TN		U.S.		TN	
	Seas. Adj.	Not Seas. Adj.	Seas. Adj.	Not Seas. Adj.	Seas. Adj.	Not Seas. Adj.	Seas. Adj.	Not Seas. Adj.	Seas. Adj.	Not Seas. Adj.	Seas. Adj.	Not Seas. Adj.	Seas. Adj.	Not Seas. Adj.	Seas. Adj.	Not Seas. Adj.
Jan	6.4	6.8	5.4	5.6	4.0	4.4	3.4	3.7	3.4	3.9	3.4	3.6	3.7	4.1	3.5	3.5
Feb	6.2	6.6	5.2	5.4	3.8	4.1	3.4	3.5	3.6	3.9	3.3	3.5	3.9	4.2	3.3	2.8
Mar	6.1	6.2	5.1	5.1	3.6	3.8	3.3	3.2	3.5	3.6	3.2	3.2	3.8	3.9	3.2	3.0
Apr	6.1	5.7	5.0	4.6	3.7	3.3	3.3	3.0	3.4	3.1	3.1	2.7	3.9	3.5	3.1	2.7
May	5.8	5.5	4.8	4.6	3.6	3.4	3.3	3.2	3.7	3.4	3.1	3.1	4.0	3.7	3.0	2.8
Jun	5.9	6.1	4.7	5.6	3.6	3.8	3.3	4.0	3.6	3.8	3.1	3.7	4.1	4.3	3.0	3.7
Jul	5.4	5.7	4.4	4.9	3.5	3.8	3.3	3.7	3.5	3.8	3.2	3.5	4.3	4.5	3.0	3.6
Aug	5.1	5.3	4.2	4.3	3.6	3.8	3.4	3.6	3.8	3.9	3.3	3.4	4.2	4.4	3.1	3.5
Sep	4.7	4.6	3.9	3.8	3.5	3.3	3.4	3.2	3.8	3.6	3.4	3.3	4.1	3.9	3.2	3.6
Oct	4.5	4.3	3.8	3.5	3.6	3.4	3.5	3.4	3.8	3.6	3.5	3.4				
Nov	4.1	3.9	3.6	3.2	3.6	3.4	3.5	3.2	3.7	3.5	3.5	3.1				
Dec	3.9	3.7	3.5	3.0	3.5	3.3	3.5 -	3.0	3.7	3.5	3.4	3.0				
Avg		5.3		4.5		3.6		3.4		3.6		3.3				

* Designates when Tennessee's unemployment rate is greater than the U.S. rate

- Designates when Tennessee's unemployment rate is equal to the U.S. rate

HOURS AND EARNINGS OF PRODUCTION WORKERS

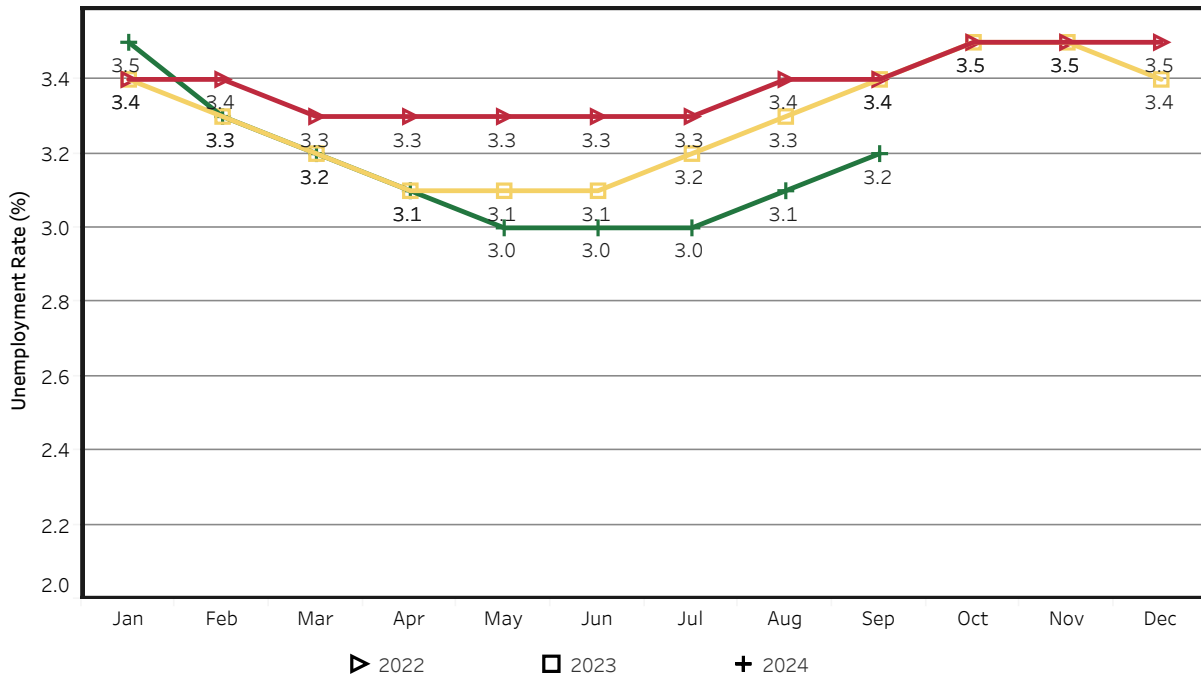
	Average Weekly Earning			Average Weekly Hours			Average Hourly Earning		
	September 2023	August 2024	September 2024	September 2023	August 2024	September 2024	September 2023	August 2024	September 2024
Manufacturing	\$954.40	\$973.60	\$986.11	40.0	40.0	40.2	\$23.86	\$24.34	\$24.53
Durable Goods	1009.82	1038.83	1042.80	40.9	40.5	40.0	24.69	25.65	26.07
Non-Durable Goods	863.48	858.48	884.67	38.6	39.2	40.6	22.37	21.90	21.79

HOURS AND EARNINGS OF PRODUCTION WORKERS - ALL MANUFACTURING

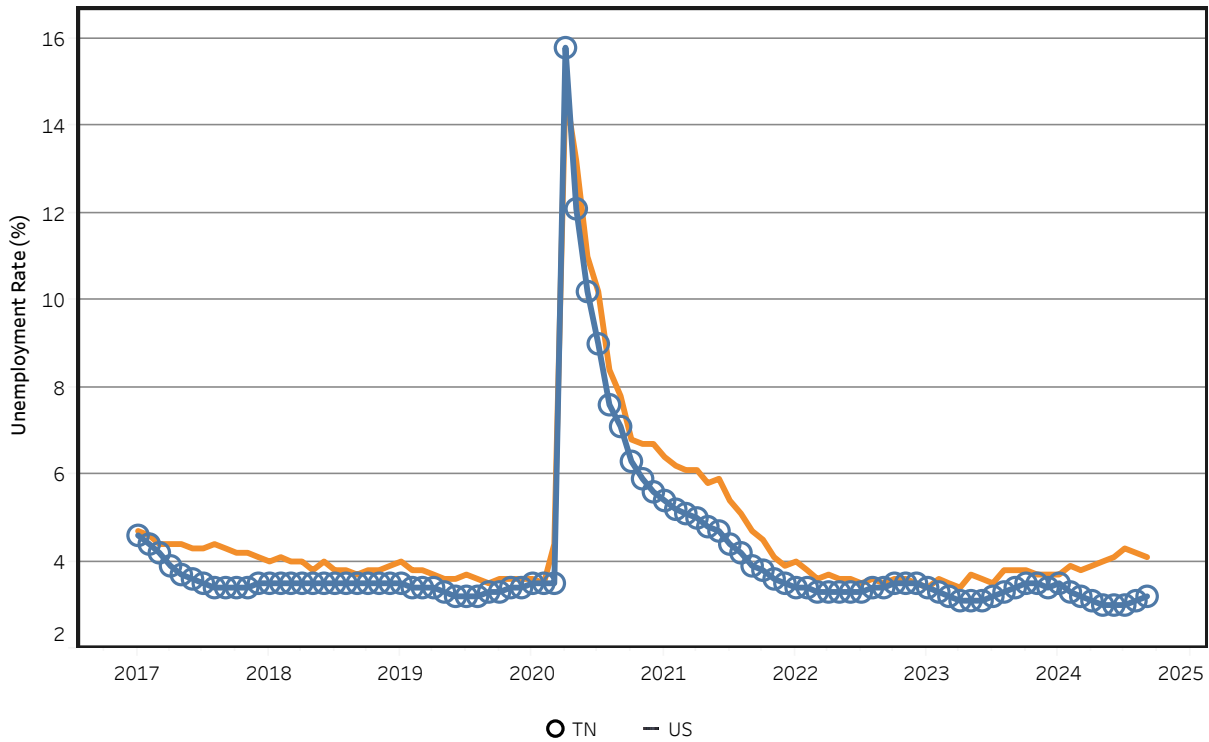
(ranked August 2024 preliminary average weekly earnings; September 2024 will be available later this month)

	Average Weekly Earning			Average Weekly Hours			Average Hourly Earning		
	August 2023	August 2024	Percent Change	August 2023	August 2024	Percent Change	August 2023	August 2024	Percent Change
FLORIDA	\$1206.66	\$1196.26	-0.9%	42.00	40.80	-2.9%	\$28.73	\$29.32	2.1%
KENTUCKY	\$1018.31	\$1105.88	8.6%	41.70	41.70	0.0%	\$24.42	\$26.52	8.6%
VIRGINIA	\$1023.00	\$1069.27	4.5%	41.30	39.50	-4.4%	\$24.77	\$27.07	9.3%
SOUTH CAROLINA	\$934.63	\$993.02	6.2%	37.40	38.40	2.7%	\$24.99	\$25.86	3.5%
ALABAMA	\$995.68	\$990.45	-0.5%	41.80	41.20	-1.4%	\$23.82	\$24.04	0.9%
GEORGIA	\$1019.15	\$986.95	-3.2%	42.50	40.30	-5.2%	\$23.98	\$24.49	2.1%
TENNESSEE	\$943.66	\$977.26	3.6%	39.80	40.20	1.0%	\$23.71	\$24.31	2.5%
MISSISSIPPI	\$850.36	\$924.34	8.7%	41.10	40.90	-0.5%	\$20.69	\$22.60	9.2%
NORTH CAROLINA	\$891.02	\$921.44	3.4%	40.10	39.70	-1.0%	\$22.22	\$23.21	4.5%
ARKANSAS	\$847.48	\$837.49	-1.2%	39.90	36.70	-8.0%	\$21.24	\$22.82	7.4%

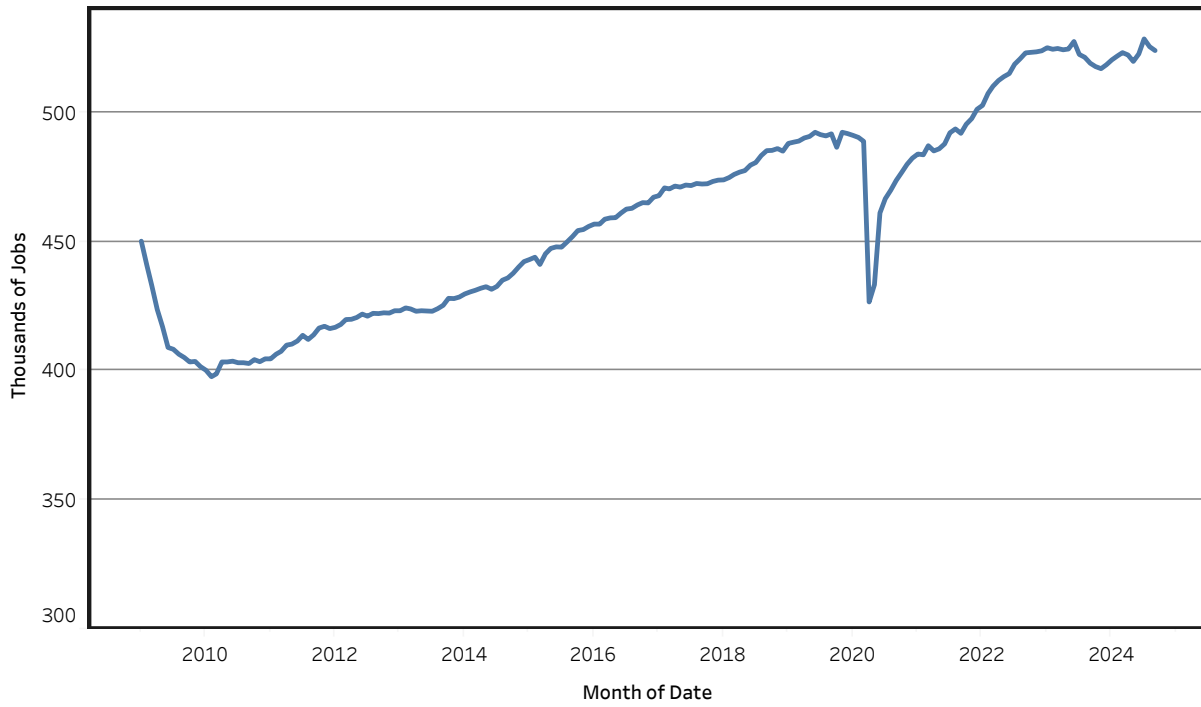
Unemployment Rates - Tennessee Seasonally Adjusted - 2022 to 2024



Unemployment Rates - US & Tennessee Seasonally Adjusted - January 2017 to September 2024



Goods - Producing Jobs in Tennessee Seasonally Adjusted - Jan 2009 to Sep 2024



Service - Providing Jobs in Tennessee Seasonally Adjusted - Jan 2009 to Sep 2024

