

# **TENNESSEE ECONOMIC ANALYSIS**

**July 2025**

**NOT TO BE RELEASED BEFORE:**

**Thursday, August 14, 2025 @ 1:30 PM CT**

**Prepared by:**

**Tennessee Department of Labor and Workforce Development**

**Workforce Insights, Research and Reporting Engine Division**

## **Table of Contents**

### **Economic Indicators**

#### **Page**

Briefing Packet Summary	1
Labor Force Estimates Summary - Household Survey	2
Business Survey - Not Seasonally Adjusted	3
Seasonally Adjusted Nonfarm Employment	4
Major Changes in Seasonally Adjusted Nonfarm Employment	4

### **Appendix**

#### **Page**

Hours and Earnings of Production Workers	4
Unemployment Rates, 2014-2025	5

### **Graphs**

#### **Page**

Tennessee Unemployment Rates	6
Unemployment Rates - U.S. and Tennessee	6
Goods-Producing Jobs in Tennessee	7
Service-Providing Jobs in Tennessee	7

## Briefing Packet Summary July 2025

### Unemployment Rates

		Change From			
		July 2024	June 2025	July 2025	Year Ago      Month Ago
<b>Tennessee</b>					
Not Seasonally Adjusted		3.9%	4.0%	4.4%	0.5%      0.4%
Seasonally Adjusted		3.4%	3.5%	3.6%	0.2%      0.1%
<b>United States</b>					
Not Seasonally Adjusted		4.5%	4.4%	4.6%	0.1%      0.2%
Seasonally Adjusted		4.2%	4.1%	4.2%	0.0%      0.1%

### Hours and Earnings of Production Workers (Manufacturing)

<b>Tennessee</b>	June 2025	July 2025	Change
Average Weekly Earnings	\$995.92	\$1,012.56	\$16.64
Average Weekly Hours	40.6	40.6	0.0
Average Hourly Earnings	\$24.53	\$24.94	\$0.41
<b>United States</b>	June 2025	July 2025	Change
Average Weekly Earnings	\$1,189.43	\$1,184.06	-\$5.37
Average Weekly Hours	41.1	40.9	-0.2
Average Hourly Earnings	\$28.94	\$28.95	\$0.01

### **SUMMARY:**

Tennessee's seasonally adjusted unemployment increased from 3.5% in June to 3.6% in July

Over the year, Tennessee's unemployment rate has increased from 3.4% to 3.6%.

Over the month, nonfarm employment decreased 900 jobs. The largest decreases were in private education and health services, leisure and hospitality, and nondurable goods manufacturing.

Over the year, nonfarm employment increased 21,500 jobs. The largest increases were in government, professional, scientific and technical services and leisure and hospitality.

**LABOR FORCE ESTIMATES SUMMARY**  
**HOUSEHOLD SURVEY**

<b>Tennessee</b>	July 2024	Revised June 2025	Preliminary July 2025	Change from July 2024 to July 2025		Change from June 2025 to July 2025	
Not Seasonally Adjusted							
Civilian Labor Force	3,446,401	3,494,232	<b>3,514,374</b>	67,973	2.0%	20,142	0.6%
Labor Force Participation Rate	60.0%	60.2%	<b>60.5%</b>	0.5	percentage points	0.3	percentage points
Employment	3,310,561	3,353,258	<b>3,358,912</b>	48,351	1.5%	5,654	0.2%
Unemployment	135,840	140,974	<b>155,462</b>	19,622	14.4%	14,488	10.3%
Unemployment Rate	3.9%	4.0%	<b>4.4%</b>	0.5	percentage points	0.4	percentage points
Seasonally Adjusted							
Civilian Labor Force	3,422,716	3,471,439	<b>3,478,416</b>	55,700	1.6%	6,977	0.2%
Labor Force Participation Rate	59.6%	59.8%	<b>59.9%</b>	0.3	percentage points	0.1	percentage points
Employment	3,304,836	3,351,317	<b>3,354,481</b>	49,645	1.5%	3,164	0.1%
Unemployment	117,880	120,122	<b>123,935</b>	6,055	5.1%	3,813	3.2%
Unemployment Rate	3.4%	3.5%	<b>3.6%</b>	0.2	percentage points	0.1	percentage points

<b>United States</b>	July 2024	Revised June 2025	Preliminary July 2025	Change from July 2024 to July 2025		Change from June 2025 to July 2025	
Not Seasonally Adjusted							
Civilian Labor Force	169,723,000	171,343,000	<b>171,646,000</b>	1,923,000	1.1%	303,000	0.2%
Labor Force Participation Rate	63.2%	62.6%	<b>62.7%</b>	-0.5	percentage points	0.1	percentage points
Employment	162,038,000	163,883,000	<b>163,799,000</b>	1,761,000	1.1%	-84,000	-0.1%
Unemployment	7,685,000	7,460,000	<b>7,847,000</b>	162,000	2.1%	387,000	5.2%
Unemployment Rate	4.5%	4.4%	<b>4.6%</b>	0.1	percentage points	0.2	percentage points
Seasonally Adjusted							
Civilian Labor Force	168,315,000	170,380,000	<b>170,342,000</b>	2,027,000	1.2%	-38,000	0.0%
Labor Force Participation Rate	62.7%	62.3%	<b>62.2%</b>	-0.5	percentage points	-0.1	percentage points
Employment	161,219,000	163,366,000	<b>163,106,000</b>	1,887,000	1.2%	-260,000	-0.2%
Unemployment	7,097,000	7,015,000	<b>7,236,000</b>	139,000	2.0%	221,000	3.2%
Unemployment Rate	4.2%	4.1%	<b>4.2%</b>	0.0	percentage points	0.1	percentage points

**BUSINESS SURVEY - Not Seasonally Adjusted**

Estimated Nonfarm Employment by Industry\*

	July 2024	June 2025	July 2025	Annual Change		Monthly Change	
				July 2024 to July 2025		June 2025 to July 2025	
				Net Change	% Change	Net Change	% Change
(numbers in thousands)							
Total Nonfarm	3,339.0	3,403.0	<b>3,372.9</b>	33.9	1.0%	-30.1	-0.9%
Total Private	2,920.7	2,949.1	<b>2,944.5</b>	23.8	0.8%	-4.6	-0.2%
Goods Producing	533.9	529.5	<b>530.6</b>	-3.3	-0.6%	1.1	0.2%
Mining, Logging and Construction	171.1	167.7	<b>169.1</b>	-2.0	-1.2%	1.4	0.8%
Manufacturing	362.8	361.8	<b>361.5</b>	-1.3	-0.4%	-0.3	-0.1%
Durable Goods	233.4	235.2	<b>235.7</b>	2.3	1.0%	0.5	0.2%
Wood Product Manufacturing	13.3	13.2	<b>13.2</b>	-0.1	-0.8%	0.0	0.0%
Nonmetallic Mineral Product Manufacturing	15.3	15.3	<b>15.4</b>	0.1	0.7%	0.1	0.7%
Primary Metal Manufacturing	11.1	11.2	<b>11.3</b>	0.2	1.8%	0.1	0.9%
Fabricated Metal Product Manufacturing	42.2	42.9	<b>43.0</b>	0.8	1.9%	0.1	0.2%
Machinery Manufacturing	24.6	25.1	<b>25.2</b>	0.6	2.4%	0.1	0.4%
Computer and Electronic Product Manufacturing	7.5	7.9	<b>7.9</b>	0.4	5.3%	0.0	0.0%
Electrical Equipment, Appliance, and Component Manufacturing	21.8	22.2	<b>22.3</b>	0.5	2.3%	0.1	0.5%
Transportation Equipment Manufacturing	73.6	73.2	<b>73.2</b>	-0.4	-0.5%	0.0	0.0%
Furniture and Related Product Manufacturing	8.9	9.1	<b>9.1</b>	0.2	2.2%	0.0	0.0%
Miscellaneous Manufacturing	15.1	15.1	<b>15.1</b>	0.0	0.0%	0.0	0.0%
Non-Durable Goods	129.4	126.6	<b>125.8</b>	-3.6	-2.8%	-0.8	-0.6%
Food Manufacturing	41.2	40.2	<b>39.9</b>	-1.3	-3.2%	-0.3	-0.7%
Beverage and Tobacco Product Manufacturing	7.1	6.7	<b>6.7</b>	-0.4	-5.6%	0.0	0.0%
Paper Manufacturing	12.8	12.3	<b>12.2</b>	-0.6	-4.7%	-0.1	-0.8%
Printing and Related Support Activities	7.8	7.6	<b>7.5</b>	-0.3	-3.8%	-0.1	-1.3%
Chemical Manufacturing	27.2	26.3	<b>26.2</b>	-1.0	-3.7%	-0.1	-0.4%
Plastics and Rubber Products Manufacturing	24.6	23.3	<b>23.1</b>	-1.5	-6.1%	-0.2	-0.9%
Service-Providing	2,805.1	2,873.5	<b>2,842.3</b>	37.2	1.3%	-31.2	-1.1%
Private Service Providing	2,386.8	2,419.6	<b>2,413.9</b>	27.1	1.1%	-5.7	-0.2%
Trade, Transportation, and Utilities	693.3	698.3	<b>698.0</b>	4.7	0.7%	-0.3	0.0%
Wholesale Trade	137.2	139.9	<b>139.0</b>	1.8	1.3%	-0.9	-0.6%
Merchant Wholesalers, Durable Goods	81.0	82.4	<b>82.3</b>	1.3	1.6%	-0.1	-0.1%
Merchant Wholesalers, Nondurable Goods	49.3	50.6	<b>49.8</b>	0.5	1.0%	-0.8	-1.6%
Wholesale Trade Agents and Brokers	6.9	6.9	<b>6.9</b>	0.0	0.0%	0.0	0.0%
Retail Trade	344.6	348.7	<b>348.6</b>	4.0	1.2%	-0.1	0.0%
Motor Vehicle and Parts Dealers	49.1	48.8	<b>48.8</b>	-0.3	-0.6%	0.0	0.0%
Building Material and Garden Equipment and Supplies Dealers	34.6	35.5	<b>34.8</b>	0.2	0.6%	-0.7	-2.0%
Food and Beverage Retailers	59.8	61.1	<b>61.0</b>	1.2	2.0%	-0.1	-0.2%
Furniture, Home Furnishings, Electronics, and Appliance Retailers	18.0	18.0	<b>18.1</b>	0.1	0.6%	0.1	0.6%
General Merchandise Retailers	78.1	79.6	<b>80.2</b>	2.1	2.7%	0.6	0.8%
Health and Personal Care Retailers	23.7	23.5	<b>23.3</b>	-0.4	-1.7%	-0.2	-0.9%
Gasoline Stations and Fuel Dealers	26.4	26.7	<b>26.8</b>	0.4	1.5%	0.1	0.4%
Clothing, Clothing Accessories, Shoe, and Jewelry Retailers	22.6	22.7	<b>22.8</b>	0.2	0.9%	0.1	0.4%
Sporting Goods, Hobby, Musical Instrument, Book, & Misc Retailers	32.3	32.8	<b>32.8</b>	0.5	1.5%	0.0	0.0%
Transportation, Warehousing, and Utilities	211.5	209.7	<b>210.4</b>	-1.1	-0.5%	0.7	0.3%
Utilities	4.5	4.5	<b>4.5</b>	0.0	0.0%	0.0	0.0%
Transportation and Warehousing	207.0	205.2	<b>205.9</b>	-1.1	-0.5%	0.7	0.3%
Information	54.3	54.7	<b>55.0</b>	0.7	1.3%	0.3	0.5%
Financial Activities	193.3	191.1	<b>191.5</b>	-1.8	-0.9%	0.4	0.2%
Finance and Insurance	147.9	147.2	<b>147.1</b>	-0.8	-0.5%	-0.1	-0.1%
Real Estate and Rental and Leasing	45.4	43.9	<b>44.4</b>	0.9	2.0%	0.5	1.1%
Professional and Business Services	451.2	458.7	<b>457.5</b>	1.9	0.4%	-1.2	-0.3%
Professional, Scientific, and Technical Services	178.9	185.3	<b>184.9</b>	2.9	1.6%	-0.4	-0.2%
Management of Companies and Enterprises	58.5	58.3	<b>58.1</b>	3.9	6.7%	-0.2	-0.3%
Administrative and Support and Waste Services	213.8	215.1	<b>214.5</b>	2.4	1.1%	-0.6	-0.3%
Private Education and Health Services	485.5	493.6	<b>489.6</b>	3.4	0.7%	-4.0	-0.8%
Private Educational Services	60.4	66.2	<b>64.3</b>	4.4	7.3%	-1.9	-2.9%
Health Care and Social Assistance	425.1	427.4	<b>425.3</b>	5.4	1.3%	-2.1	-0.5%
Ambulatory Health Care Services	176.1	175.4	<b>174.5</b>	6.4	3.6%	-0.9	-0.5%
Hospitals	126.1	128.1	<b>127.7</b>	7.4	5.9%	-0.4	-0.3%
Nursing and Residential Care Facilities	62.5	64.2	<b>64.3</b>	8.4	13.4%	0.1	0.2%
Social Assistance	60.4	59.7	<b>58.8</b>	-1.6	-2.6%	-0.9	-1.5%
Leisure and Hospitality	376.7	386.7	<b>385.8</b>	9.1	2.4%	-0.9	-0.2%
Arts, Entertainment, and Recreation	55.7	59.6	<b>59.6</b>	3.9	7.0%	0.0	0.0%
Accommodation and Food Services	321.0	327.1	<b>326.2</b>	5.2	1.6%	-0.9	-0.3%
Accommodation	39.2	39.1	<b>39.0</b>	-0.2	-0.5%	-0.1	-0.3%
Food Services and Drinking Places	281.8	288.0	<b>287.2</b>	5.4	1.9%	-0.8	-0.3%
Other Services	132.5	136.5	<b>136.5</b>	4.0	3.0%	0.0	0.0%
Government	418.3	453.9	<b>428.4</b>	10.1	2.4%	-25.5	-5.6%
Federal Government	58.4	58.1	<b>58.1</b>	-0.3	-0.5%	0.0	0.0%
State Government	90.3	99.8	<b>96.8</b>	6.5	7.2%	-3.0	-3.0%
State Government Educational Services	47.5	56.0	<b>52.9</b>	5.4	11.4%	-3.1	-5.5%
State Government Excluding Education	42.8	43.8	<b>43.9</b>	1.1	2.6%	0.1	0.2%
Local Government	269.6	296.0	<b>273.5</b>	3.9	1.4%	-22.5	-7.6%
Local Government Education Services	122.7	145.1	<b>123.3</b>	0.6	0.5%	-21.8	-15.0%
Local Government excluding Educational Services	73.1	85.3	<b>75.5</b>	2.4	3.3%	-9.8	-11.5%

\* Estimates include all full- and part-time nonagricultural wage and salary employees who worked during, or received pay for, any part of the pay period which include the 12th of the month. This is a count of jobs by place of work. Agricultural workers, proprietors, self-employed persons, workers in private households, and unpaid family workers are excluded.

Seasonally Adjusted Nonfarm Employment				Annual Change		Monthly Change	
(numbers in thousands)				July 2024 to July 2025		June 2025 to July 2025	
	July 2024	June 2025	July 2025	Net Change	% Change	Net Change	% Change
Total Nonfarm	3372.9	3395.3	3394.4	21.5	0.6%	-0.9	0.0%
Mining, Logging and Construction	168.9	165.2	166.6	-2.3	-1.4%	1.4	0.8%
Mining and logging	4.4	4.6	4.6	0.2	4.5%	0.0	0.0%
Construction	164.5	160.6	162.0	-2.5	-1.5%	1.4	0.9%
Manufacturing	362.1	361.3	361.8	-0.3	-0.1%	0.5	0.1%
Durable Goods	232.9	234.7	235.9	3.0	1.3%	1.2	0.5%
Non-Durable Goods	129.2	126.6	125.9	-3.3	-2.6%	-0.7	-0.6%
Trade, Transportation, and Utilities	698.1	698.8	699.8	1.7	0.2%	1.0	0.1%
Wholesale Trade	137.2	139.0	138.6	1.4	1.0%	-0.4	-0.3%
Retail Trade	346.5	348.9	349.5	3.0	0.9%	0.6	0.2%
Transportation, Warehousing, and Utilities	214.4	210.9	211.7	-2.7	-1.3%	0.8	0.4%
Information	54.5	54.3	54.7	0.2	0.4%	0.4	0.7%
Financial Activities	192.6	190.6	190.2	-2.4	-1.2%	-0.4	-0.2%
Finance and Insurance	147.6	146.9	146.4	-1.2	-0.8%	-0.5	-0.3%
Real Estate and Rental and Leasing	45.0	43.7	43.8	-1.2	-2.7%	0.1	0.2%
Professional and Business Services	452.3	457.5	457.3	5.0	1.1%	-0.2	0.0%
Professional, Scientific, and Technical Services	178.7	184.8	184.9	6.2	3.5%	0.1	0.1%
Management of Companies and Enterprises	58.2	58.3	57.9	-0.3	-0.5%	-0.4	-0.7%
Administrative, Support and Waste Services	215.4	214.4	214.5	-0.9	-0.4%	0.1	0.0%
Private Education and Health Services	493.1	497.3	494.6	1.5	0.3%	-2.7	-0.5%
Private Educational Services	68.0	69.7	69.1	1.1	1.6%	-0.6	-0.9%
Health Care and Social Assistance	425.1	427.6	425.5	0.4	0.1%	-2.1	-0.5%
Leisure and Hospitality	367.6	373.1	372.0	4.4	1.2%	-1.1	-0.3%
Arts, Entertainment, and Recreation	50.3	52.8	52.5	2.2	4.4%	-0.3	-0.6%
Accommodation and Food Services	317.3	320.3	319.5	2.2	0.7%	-0.8	-0.2%
Other Services	131.5	135.0	135.3	3.8	2.9%	0.3	0.2%
Government	452.2	462.2	462.1	9.9	2.2%	-0.1	0.0%
Federal Government	58.4	58.3	58.1	-0.3	-0.5%	-0.2	-0.3%
State Government	99.1	105.4	105.1	6.0	6.1%	-0.3	-0.3%
Local Government	294.7	298.5	298.9	4.2	1.4%	0.4	0.1%

#### Major Changes in Seasonally Adjusted Nonfarm Employment (in thousands)

Monthly Change from June 2025 to July 2025

Major Employment Increases	June 2025	July 2025	Change
Construction	160.6	162.0	1.4
Durable Goods Manufacturing	234.7	235.9	1.2
Transportation, Warehousing, and Utilities	210.9	211.7	0.8
Major Employment Decreases			
Private Education and Health Services	497.3	494.6	-2.7
Leisure and Hospitality	373.1	372.0	-1.1
Non-durable Goods Manufacturing	126.6	125.9	-0.7

Yearly Change from July 2024 to July 2025

Major Employment Increases	July 2024	July 2025	Change
Government	452.2	462.1	9.9
Professional, Scientific, and Technical Services	178.7	184.9	6.2
Leisure and Hospitality	367.6	372.0	4.4
Major Employment Decreases			
Non-durable Goods Manufacturing	129.2	125.9	-3.3
Transportation, Warehousing, and Utilities	214.4	211.7	-2.7
Construction	164.5	162.0	-2.5

#### Hours and Earnings of Production Workers (Manufacturing)

Tennessee	Average Weekly Earnings			Average Weekly Hours			Average Hourly Earnings		
	July 2024	June 2025	July 2025	July 2024	June 2025	July 2025	July 2024	June 2025	July 2025
Manufacturing	\$1,009.42	\$995.92	\$1,012.56	41.1	40.6	40.6	\$24.56	\$24.53	\$24.94
Durable Goods	\$1,048.14	\$1,032.22	\$1,032.20	40.5	40.4	39.7	\$25.88	\$25.55	\$26.00
Non-durable Goods	\$938.28	\$928.24	\$972.48	42.0	41.0	42.3	\$22.34	\$22.64	\$22.99

#### HOURS AND EARNINGS OF PRODUCTION WORKERS - ALL MANUFACTURING

(June 2025 preliminary average hours and earnings; July 2025 will be available later this month)

	Average Weekly Earnings			Average Weekly Hours			Average Hourly Earnings		
	June 2024	June 2025	Pct. Change	June 2024	June 2025	Pct. Change	June 2024	June 2025	Pct. Change
Alabama	\$1,004.64	\$1,115.43	11.0%	42.0	43.1	2.6%	\$23.92	\$25.88	8.2%
Arkansas	\$839.79	\$922.54	9.9%	38.7	38.6	-0.3%	\$21.70	\$23.90	10.1%
Florida	\$1,218.40	\$1,209.91	-0.7%	41.4	41.0	-1.0%	\$29.43	\$29.51	0.3%
Georgia	\$988.09	\$981.31	-0.7%	42.1	40.3	-4.3%	\$23.47	\$24.35	3.7%
Kentucky	\$1,111.02	\$1,153.94	3.9%	42.1	42.3	0.5%	\$26.39	\$27.28	3.4%
Mississippi	\$917.80	\$960.48	4.7%	40.9	41.4	1.2%	\$22.44	\$23.20	3.4%
North Carolina	\$933.35	\$936.40	0.3%	40.3	40.0	-0.7%	\$23.16	\$23.41	1.1%
South Carolina	\$968.50	\$1,081.03	11.6%	38.1	38.9	2.1%	\$25.42	\$27.79	9.3%
Tennessee	\$990.17	\$1,000.82	1.1%	40.3	40.9	1.5%	\$24.57	\$24.47	-0.4%
Virginia	\$1,031.63	\$1,102.27	6.8%	38.9	38.3	-1.5%	\$26.52	\$28.78	8.5%

**UNEMPLOYMENT RATES, 2014-2025**  
**U.S. & Tennessee, Seasonally Adjusted & Not Seasonally Adjusted**

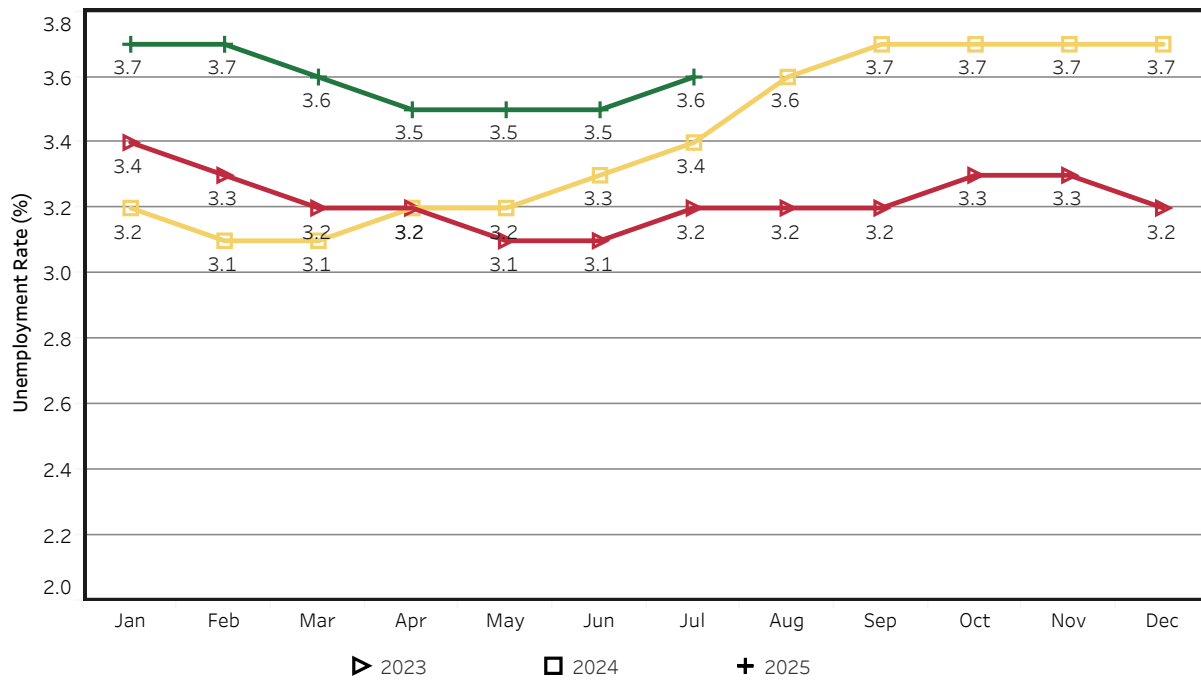
	2014				2015				2016				2017			
	U.S.		TN		U.S.		TN		U.S.		TN		U.S.		TN	
	Seas. Adj.	Not Seas. Adj.	Seas. Adj.	Not Seas. Adj.	Seas. Adj.	Not Seas. Adj.	Seas. Adj.	Not Seas. Adj.	Seas. Adj.	Not Seas. Adj.	Seas. Adj.	Not Seas. Adj.	Seas. Adj.	Not Seas. Adj.	Seas. Adj.	Not Seas. Adj.
Jan	6.6	7.0	6.9	7.0	5.7	6.1	6.1	6.5	4.8	5.3	4.8	5.0	4.7	5.1	4.5	5.0
Feb	6.7	7.0	6.8	7.0	5.5	5.8	6.0	6.1	4.9	5.2	4.7	4.8	4.6	4.9	4.3	4.5
Mar	6.7	6.8	6.7	6.8	5.4	5.6	5.9	5.8	5.0	5.1	4.7	4.7	4.4	4.6	4.1	4.1
Apr	6.2	5.9	6.7	6.0	5.4	5.1	5.8	5.3	5.1	4.7	4.7	4.3	4.4	4.1	3.9	3.4
May	6.3	6.1	6.7	6.3	5.6	5.3	5.7	5.6	4.8	4.5	4.7	4.2	4.4	4.1	3.7	3.3
Jun	6.1	6.3	6.6	7.1	5.3	5.5	5.6	6.1	4.9	5.1	4.7	5.2	4.3	4.5	3.6	4.1
Jul	6.2	6.5	6.6	7.2	5.2	5.6	5.5	5.9	4.8	5.1	4.7	5.1	4.3	4.6	3.5	3.9
Aug	6.1	6.3	6.5	6.7	5.1	5.2	5.4	5.4	4.9	5.0	4.8	4.9	4.4	4.5	3.4	3.6
Sep	5.9	5.7	6.5	6.4	5.0	4.9	5.3	5.2	5.0	4.8	4.8	4.9	4.3	4.1	3.4	3.3
Oct	5.7	5.5	6.4	6.1	5.0	4.8	5.1	5.1	4.9	4.7	4.8	4.7	4.2	3.9	3.4	3.3
Nov	5.8	5.5	6.3	6.1	5.1	4.8	5.0	4.9	4.7	4.4	4.8	4.4	4.2	3.9	3.5	3.3
Dec	5.6	5.4	6.2	5.9	5.0	4.8	4.9	4.7	4.7	4.5	4.7	4.5	4.1	3.9	3.5	3.2
Avg		6.2		6.5		5.3		5.5		4.9		4.7		4.4		3.7

	2018				2019				2020				2021			
	U.S.		TN		U.S.		TN		U.S.		TN		U.S.		TN	
	Seas. Adj.	Not Seas. Adj.	Seas. Adj.	Not Seas. Adj.	Seas. Adj.	Not Seas. Adj.	Seas. Adj.	Not Seas. Adj.	Seas. Adj.	Not Seas. Adj.	Seas. Adj.	Not Seas. Adj.	Seas. Adj.	Not Seas. Adj.	Seas. Adj.	Not Seas. Adj.
Jan	4.0	4.5	3.5	3.9	4.0	4.4	3.5	3.9	3.6	4.0	3.4	3.7	6.4	6.8	5.4	5.7
Feb	4.1	4.4	3.5	3.6	3.8	4.1	3.4	3.4	3.5	3.8	3.5	3.4	6.2	6.6	5.2	5.3
Mar	4.0	4.1	3.5	3.5	3.8	3.9	3.4	3.4	4.4	4.5	3.5	3.9	6.1	6.2	5.1	5.1
Apr	4.0	3.7	3.5	3.0	3.7	3.3	3.4	2.9	14.8	14.4	15.7	15.0	6.1	5.7	5.0	4.7
May	3.8	3.6	3.5	3.1	3.6	3.4	3.3	3.1	13.2	13.0	12.1	11.8	5.8	5.5	4.9	4.6
Jun	4.0	4.2	3.5	4.1	3.6	3.8	3.2	3.8	11.0	11.2	10.2	10.8	5.9	6.1	4.7	5.6
Jul	3.8	4.1	3.5	3.9	3.7	4.0	3.2	3.7	10.2	10.5	9.0	10.1	5.4	5.7	4.4	4.9
Aug	3.8	3.9	3.5	3.6	3.6	3.8	3.2	3.3	8.4	8.5	7.6	7.7	5.1	5.3	4.2	4.4
Sep	3.7	3.6	3.5	3.4	3.5	3.3	3.3	3.1	7.8	7.7	7.1	6.9	4.7	4.6	3.9	3.8
Oct	3.8	3.5	3.5	3.4	3.6	3.3	3.3	3.3	6.9	6.6	6.3	5.9	4.5	4.3	3.7	3.5
Nov	3.8	3.5	3.5	3.1	3.6	3.3	3.4	3.1	6.7	6.4	5.9	5.4	4.2	3.9	3.6	3.2
Dec	3.9	3.7	3.5	3.2	3.6	3.4	3.4	3.1	6.7	6.5	5.6	5.4	3.9	3.7	3.5	3.0
Avg		3.9		3.5		3.7		3.3		8.1		7.4		5.3		4.5

	2022				2023				2024				2025			
	U.S.		TN		U.S.		TN		U.S.		TN		U.S.		TN	
	Seas. Adj.	Not Seas. Adj.	Seas. Adj.	Not Seas. Adj.	Seas. Adj.	Not Seas. Adj.	Seas. Adj.	Not Seas. Adj.	Seas. Adj.	Not Seas. Adj.	Seas. Adj.	Not Seas. Adj.	Seas. Adj.	Not Seas. Adj.	Seas. Adj.	Not Seas. Adj.
Jan	4.0	4.4	3.4	3.7	3.5	3.9	3.4	3.6	3.7	4.1	3.2	3.3	4.0	4.4	3.7	3.8
Feb	3.8	4.1	3.4	3.4	3.6	3.9	3.3	3.4	3.9	4.2	3.1	3.1	4.1	4.5	3.7	3.5
Mar	3.7	3.8	3.3	3.2	3.5	3.6	3.2	3.2	3.9	3.9	3.1	3.1	4.2	4.2	3.6	3.3
Apr	3.7	3.3	3.3	3.0	3.4	3.1	3.2	2.7	3.9	3.5	3.2	2.8	4.2	3.9	3.5	2.9
May	3.6	3.4	3.3	3.1	3.6	3.4	3.1	3.1	4.0	3.7	3.2	2.9	4.2	4.0	3.5	3.3
Jun	3.6	3.8	3.3	4.0	3.6	3.8	3.1	3.7	4.1	4.3	3.3	3.9	4.1	4.4	3.5	4.0
Jul	3.5	3.8	3.3	3.7	3.5	3.8	3.2	3.5	4.2	4.5	3.4	3.9	4.2	4.6	3.6	4.4
Aug	3.6	3.8	3.3	3.5	3.7	3.9	3.2	3.3	4.2	4.4	3.6	3.7				
Sep	3.5	3.3	3.4	3.2	3.8	3.6	3.2	3.3	4.1	3.9	3.7	3.5				
Oct	3.6	3.4	3.4	3.4	3.9	3.6	3.3	3.3	4.1	3.9	3.7	3.6				
Nov	3.6	3.4	3.4	3.2	3.7	3.5	3.3	3.0	4.2	4.0	3.7	3.7				
Dec	3.5	3.3	3.4	3.0	3.8	3.5	3.2	2.9	4.1	3.8	3.7	3.5				
Avg		3.6		3.4		3.6		3.2		4.0		3.4				

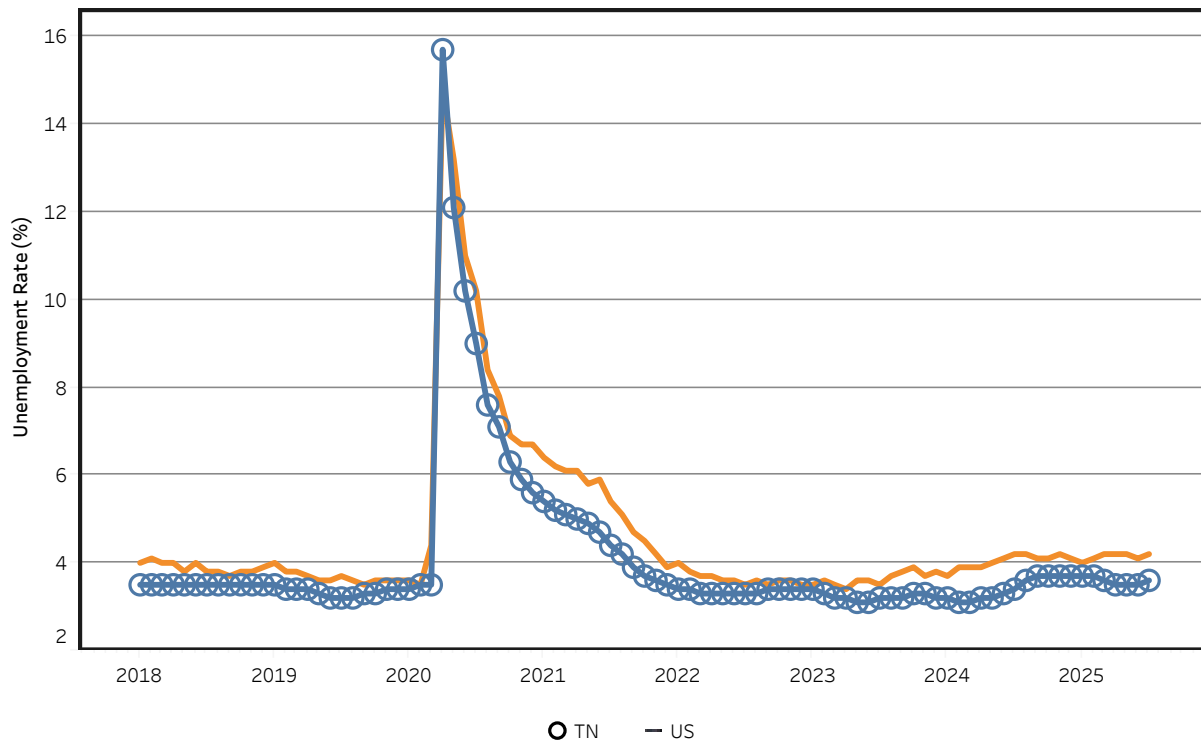
## Unemployment Rates - Tennessee

### Seasonally Adjusted - 2023 to 2025



## Unemployment Rates - US & Tennessee

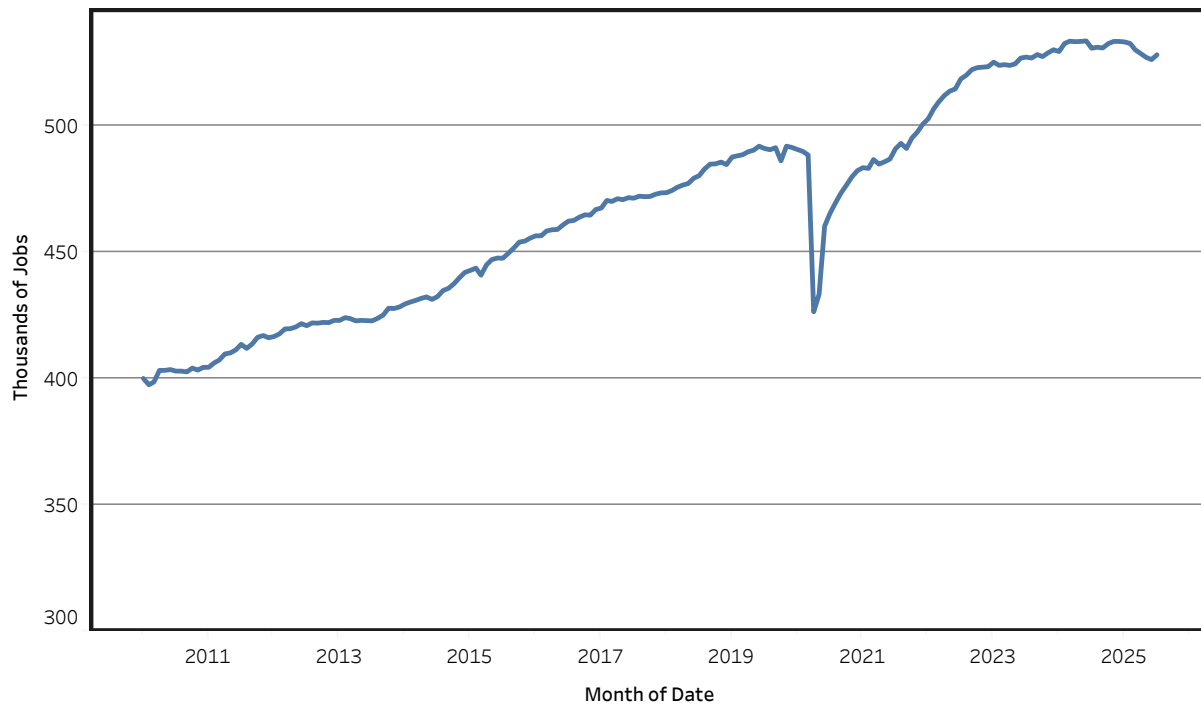
### Seasonally Adjusted - January 2018 to July 2025





## Goods - Producing Jobs in Tennessee

Seasonally Adjusted - Jan 2010 to Jul 2025



## Service - Providing Jobs in Tennessee

Seasonally Adjusted - Jan 2010 to Jul 2025

