

TENNESSEE ECONOMIC ANALYSIS

August 2025

NOT TO BE RELEASED BEFORE:

Thursday, September 18, 2025 @ 1:30 PM CT

Prepared by:

Tennessee Department of Labor and Workforce Development

Workforce Insights, Research and Reporting Engine Division

Table of Contents

Economic Indicators

Page

Briefing Packet Summary	1
Labor Force Estimates Summary - Household Survey	2
Business Survey - Not Seasonally Adjusted	3
Seasonally Adjusted Nonfarm Employment	4
Major Changes in Seasonally Adjusted Nonfarm Employment	4

Appendix

Page

Hours and Earnings of Production Workers	4
Unemployment Rates, 2014-2025	5

Graphs

Page

Tennessee Unemployment Rates	6
Unemployment Rates - U.S. and Tennessee	6
Goods-Producing Jobs in Tennessee	7
Service-Providing Jobs in Tennessee	7

Briefing Packet Summary August 2025

Unemployment Rates

				Change From	
Tennessee	August 2024	July 2025	August 2025	Year Ago	Month Ago
Not Seasonally Adjusted	3.7%	4.4%	3.6%	-0.1%	-0.8%
Seasonally Adjusted	3.6%	3.6%	3.6%	0.0%	0.0%
United States	August 2024	July 2025	August 2025	Year Ago	Month Ago
Not Seasonally Adjusted	4.4%	4.6%	4.5%	0.1%	-0.1%
Seasonally Adjusted	4.2%	4.2%	4.3%	0.1%	0.1%

Hours and Earnings of Production Workers (Manufacturing)

Tennessee	July 2025	August 2025	Change
Average Weekly Earnings	\$1,014.65	\$1,018.03	\$3.38
Average Weekly Hours	40.7	41.0	0.3
Average Hourly Earnings	\$24.93	\$24.83	-\$0.10
United States	July 2025	August 2025	Change
Average Weekly Earnings	\$1,187.33	\$1,189.43	\$2.10
Average Weekly Hours	40.9	41.1	0.2
Average Hourly Earnings	\$29.03	\$28.94	-\$0.09

SUMMARY:

Tennessee's seasonally adjusted unemployment rate remained steady at 3.6% in August.

Over the past year, Tennessee's seasonally adjusted unemployment rate has remained steady at 3.6%.

Over the month, nonfarm employment increased 9,500 jobs. The largest increases were in transportation, warehousing, and utilities, retail trade, and construction.

Over the year, nonfarm employment increased 34,400 jobs. The largest increases were in government, professional and business services, and leisure and hospitality.

LABOR FORCE ESTIMATES SUMMARY
HOUSEHOLD SURVEY

Tennessee Not Seasonally Adjusted	August 2024	Revised July 2025	Preliminary August 2025	Change from August 2024 to August 2025		Change from July 2025 to August 2025	
Civilian Labor Force	3,420,771	3,514,988	3,506,861	86,090	2.5%	-8,127	-0.2%
Labor Force Participation Rate	59.5%	60.5%	60.3%	0.8	percentage points	-0.2	percentage points
Employment	3,293,042	3,359,916	3,381,844	88,802	2.7%	21,928	0.7%
Unemployment	127,729	155,072	125,017	-2,712	-2.1%	-30,055	-19.4%
Unemployment Rate	3.7%	4.4%	3.6%	-0.1	percentage points	-0.8	percentage points
Seasonally Adjusted							
Civilian Labor Force	3,426,395	3,478,531	3,487,821	61,426	1.8%	9,290	0.3%
Labor Force Participation Rate	59.6%	59.9%	60.0%	0.4	percentage points	0.1	percentage points
Employment	3,304,336	3,354,669	3,363,699	59,363	1.8%	9,030	0.3%
Unemployment	122,059	123,862	124,122	2,063	1.7%	260	0.2%
Unemployment Rate	3.6%	3.6%	3.6%	0.0	percentage points	0.0	percentage points
United States Not Seasonally Adjusted	August 2024	Revised July 2025	Preliminary August 2025	Change from August 2024 to August 2025		Change from July 2025 to August 2025	
Civilian Labor Force	168,763,000	171,646,000	171,035,000	2,272,000	1.3%	-611,000	-0.4%
Labor Force Participation Rate	62.8%	62.7%	62.4%	-0.4	percentage points	-0.3	percentage points
Employment	161,348,000	163,799,000	163,288,000	1,940,000	1.2%	-511,000	-0.3%
Unemployment	7,415,000	7,847,000	7,747,000	332,000	4.5%	-100,000	-1.3%
Unemployment Rate	4.4%	4.6%	4.5%	0.1	percentage points	-0.1	percentage points
Seasonally Adjusted							
Civilian Labor Force	168,496,000	170,342,000	170,778,000	2,282,000	1.4%	436,000	0.3%
Labor Force Participation Rate	62.7%	62.2%	62.3%	-0.4	percentage points	0.1	percentage points
Employment	161,425,000	163,106,000	163,394,000	1,969,000	1.2%	288,000	0.2%
Unemployment	7,071,000	7,236,000	7,384,000	313,000	4.4%	148,000	2.0%
Unemployment Rate	4.2%	4.2%	4.3%	0.1	percentage points	0.1	percentage points

BUSINESS SURVEY - Not Seasonally Adjusted

Estimated Nonfarm Employment by Industry*

(numbers in thousands)	August 2024	July 2025	August 2025	Annual Change		Monthly Change	
				August 2024 to August		July 2025 to August 2025	
				Net Change	% Change	Net Change	% Change
Total Nonfarm	3,364.1	3,376.2	3,396.9	32.8	1.0%	20.7	0.6%
Total Private	2,929.2	2,947.8	2,952.8	23.6	0.8%	5.0	0.2%
Goods Producing	534.3	529.8	530.3	-4.0	-0.7%	0.5	0.1%
Mining, Logging and Construction	171.0	169.0	170.0	-1.0	-0.6%	1.0	0.6%
Manufacturing	363.3	360.8	360.3	-3.0	-0.8%	-0.5	-0.1%
Durable Goods	234.3	235.1	235.6	1.3	0.6%	0.5	0.2%
Wood Product Manufacturing	13.2	13.2	13.2	0.0	0.0%	0.0	0.0%
Nonmetallic Mineral Product Manufacturing	15.3	15.3	15.3	0.0	0.0%	0.0	0.0%
Primary Metal Manufacturing	11.1	11.2	11.3	0.2	1.8%	0.1	0.9%
Fabricated Metal Product Manufacturing	42.2	43.0	43.0	0.8	1.9%	0.0	0.0%
Machinery Manufacturing	24.7	25.1	25.2	0.5	2.0%	0.1	0.4%
Computer and Electronic Product Manufacturing	7.6	7.9	7.9	0.3	3.9%	0.0	0.0%
Electrical Equipment, Appliance, and Component Manufacturing	21.7	22.2	22.3	0.6	2.8%	0.1	0.5%
Transportation Equipment Manufacturing	74.5	73.1	73.3	-1.2	-1.6%	0.2	0.3%
Furniture and Related Product Manufacturing	9.0	9.0	9.0	0.0	0.0%	0.0	0.0%
Miscellaneous Manufacturing	15.0	15.1	15.1	0.1	0.7%	0.0	0.0%
Non-Durable Goods	129.0	125.7	124.7	-4.3	-3.3%	-1.0	-0.8%
Food Manufacturing	41.1	39.9	40.0	-1.1	-2.7%	0.1	0.3%
Beverage and Tobacco Product Manufacturing	7.0	6.7	6.7	-0.3	-4.3%	0.0	0.0%
Paper Manufacturing	12.8	12.2	12.2	-0.6	-4.7%	0.0	0.0%
Printing and Related Support Activities	7.8	7.5	7.5	-0.3	-3.8%	0.0	0.0%
Chemical Manufacturing	27.0	26.2	26.1	-0.9	-3.3%	-0.1	-0.4%
Plastics and Rubber Products Manufacturing	24.5	23.1	22.3	-2.2	-9.0%	-0.8	-3.5%
Service-Providing	2,829.8	2,846.4	2,866.6	36.8	1.3%	20.2	0.7%
Private Service Providing	2,394.9	2,418.0	2,422.5	27.6	1.2%	4.5	0.2%
Trade, Transportation, and Utilities	693.8	697.5	699.9	6.1	0.9%	2.4	0.3%
Wholesale Trade	137.1	139.9	138.7	1.6	1.2%	-1.2	-0.9%
Merchant Wholesalers, Durable Goods	81.0	82.5	81.6	0.6	0.7%	-0.9	-1.1%
Merchant Wholesalers, Nondurable Goods	49.2	50.5	50.2	1.0	2.0%	-0.3	-0.6%
Wholesale Trade Agents and Brokers	6.9	6.9	6.9	0.0	0.0%	0.0	0.0%
Retail Trade	344.5	348.6	349.1	4.6	1.3%	0.5	0.1%
Motor Vehicle and Parts Dealers	48.9	48.7	49.4	0.5	1.0%	0.7	1.4%
Building Material and Garden Equipment and Supplies Dealers	34.0	34.7	33.9	-0.1	-0.3%	-0.8	-2.3%
Food and Beverage Retailers	60.1	61.0	61.0	0.9	1.5%	0.0	0.0%
Furniture, Home Furnishings, Electronics, and Appliance Retailers	18.1	18.1	18.3	0.2	1.1%	0.2	1.1%
General Merchandise Retailers	78.2	80.2	80.6	2.4	3.1%	0.4	0.5%
Health and Personal Care Retailers	23.8	23.4	23.3	-0.5	-2.1%	-0.1	-0.4%
Gasoline Stations and Fuel Dealers	26.5	26.8	26.9	0.4	1.5%	0.1	0.4%
Clothing, Clothing Accessories, Shoe, and Jewelry Retailers	22.6	22.8	23.0	0.4	1.8%	0.2	0.9%
Sporting Goods, Hobby, Musical Instrument, Book, & Misc Retailers	32.3	32.9	32.7	0.4	1.2%	-0.2	-0.6%
Transportation, Warehousing, and Utilities	212.2	209.0	212.1	-0.1	0.0%	3.1	1.5%
Utilities	4.5	4.5	4.5	0.0	0.0%	0.0	0.0%
Transportation and Warehousing	207.7	204.5	207.6	-0.1	0.0%	3.1	1.5%
Information	54.4	55.0	54.3	-0.1	-0.2%	-0.7	-1.3%
Financial Activities	193.3	192.0	192.7	-0.6	-0.3%	0.7	0.4%
Finance and Insurance	147.9	147.5	147.9	0.0	0.0%	0.4	0.3%
Real Estate and Rental and Leasing	45.4	44.5	44.8	0.9	2.0%	0.3	0.7%
Professional and Business Services	454.6	459.5	464.4	1.9	0.4%	4.9	1.1%
Professional, Scientific, and Technical Services	177.8	186.0	186.6	2.9	1.6%	0.6	0.3%
Management of Companies and Enterprises	58.1	58.1	57.9	3.9	6.7%	-0.2	-0.3%
Administrative and Support and Waste Services	218.7	215.4	219.9	2.4	1.1%	4.5	2.1%
Private Education and Health Services	490.5	490.9	491.8	3.4	0.7%	0.9	0.2%
Private Educational Services	62.9	64.9	64.5	4.4	7.0%	-0.4	-0.6%
Health Care and Social Assistance	427.6	426.0	427.3	5.4	1.3%	1.3	0.3%
Ambulatory Health Care Services	177.2	174.5	175.8	6.4	3.6%	1.3	0.7%
Hospitals	127.4	128.1	128.2	7.4	5.8%	0.1	0.1%
Nursing and Residential Care Facilities	62.8	64.4	64.3	8.4	13.4%	-0.1	-0.2%
Social Assistance	60.2	59.0	59.0	-1.2	-2.0%	0.0	0.0%
Leisure and Hospitality	376.1	386.8	382.0	5.9	1.6%	-4.8	-1.2%
Arts, Entertainment, and Recreation	53.7	59.5	55.4	1.7	3.2%	-4.1	-6.9%
Accommodation and Food Services	322.4	327.3	326.6	4.2	1.3%	-0.7	-0.2%
Accommodation	38.4	38.9	38.8	0.4	1.0%	-0.1	-0.3%
Food Services and Drinking Places	284.0	288.4	287.8	3.8	1.3%	-0.6	-0.2%
Other Services	132.2	136.3	137.4	5.2	3.9%	1.1	0.8%
Government	434.9	428.4	444.1	9.2	2.1%	15.7	3.7%
Federal Government	58.4	58.1	57.8	-0.6	-1.0%	-0.3	-0.5%
State Government	91.8	96.8	98.7	6.9	7.5%	1.9	2.0%
State Government Educational Services	49.3	52.9	54.9	5.6	11.4%	2.0	3.8%
State Government Excluding Education	42.5	43.9	43.8	1.3	3.1%	-0.1	-0.2%
Local Government	284.7	273.5	287.6	2.9	1.0%	14.1	5.2%
Local Government Education Services	135.1	123.3	135.4	0.3	0.2%	12.1	9.8%
Local Government excluding Educational Services	81.2	76.6	84.8	3.6	4.4%	8.2	10.7%

* Estimates include all full- and part-time nonagricultural wage and salary employees who worked during, or received pay for, any part of the pay period which include the 12th of the month. This is a count of jobs by place of work. Agricultural workers, proprietors, self-employed persons, workers in private households, and unpaid family workers are excluded.

Seasonally Adjusted Nonfarm Employment

(numbers in thousands)

	August 2024	July 2025	August 2025	Annual Change		Monthly Change	
				August 2024 to August 2025		July 2025 to August 2025	
				Net Change	% Change	Net Change	% Change
Total Nonfarm	3,373.9	3,398.8	3,408.3	34.4	1.0%	9.5	0.3%
Mining, Logging and Construction	169.0	166.8	168.8	-0.2	-0.1%	2.0	1.2%
Mining and logging	4.5	4.6	4.6	0.1	2.2%	0.0	0.0%
Construction	164.5	162.2	164.2	-0.3	-0.2%	2.0	1.2%
Manufacturing	362.4	361.1	361.1	-1.3	-0.4%	0.0	0.0%
Durable Goods	233.6	235.4	235.9	2.3	1.0%	0.5	0.2%
Non-Durable Goods	128.8	125.7	125.2	-3.6	-2.8%	-0.5	-0.4%
Trade, Transportation, and Utilities	697.7	700.5	704.0	6.3	0.9%	3.5	0.5%
Wholesale Trade	137.3	139.4	138.7	1.4	1.0%	-0.7	-0.5%
Retail Trade	346.3	349.9	351.9	5.6	1.6%	2.0	0.6%
Transportation, Warehousing, and Utilities	214.1	211.2	213.4	-0.7	-0.3%	2.2	1.0%
Information	54.5	54.6	54.3	-0.2	-0.4%	-0.3	-0.5%
Financial Activities	192.7	190.7	190.9	-1.8	-0.9%	0.2	0.1%
Finance and Insurance	147.7	146.8	146.8	-0.9	-0.6%	0.0	0.0%
Real Estate and Rental and Leasing	45.0	43.9	44.1	-0.9	-2.0%	0.2	0.5%
Professional and Business Services	452.2	459.2	460.2	8.0	1.8%	1.0	0.2%
Professional, Scientific, and Technical Services	178.5	185.8	186.4	7.9	4.4%	0.6	0.3%
Management of Companies and Enterprises	58.1	57.9	57.9	-0.2	-0.3%	0.0	0.0%
Administrative, Support and Waste Services	215.6	215.5	215.9	0.3	0.1%	0.4	0.2%
Private Education and Health Services	494.1	495.5	495.9	1.8	0.4%	0.4	0.1%
Private Educational Services	67.9	69.5	69.6	1.7	2.5%	0.1	0.1%
Health Care and Social Assistance	426.2	426.0	426.3	0.1	0.0%	0.3	0.1%
Leisure and Hospitality	366.8	372.8	373.2	6.4	1.7%	0.4	0.1%
Arts, Entertainment, and Recreation	50.0	52.3	51.6	1.6	3.2%	-0.7	-1.3%
Accommodation and Food Services	316.8	320.5	321.6	4.8	1.5%	1.1	0.3%
Other Services	131.8	135.2	136.9	5.1	3.9%	1.7	1.3%
Government	452.7	462.4	463.0	10.3	2.3%	0.6	0.1%
Federal Government	58.6	58.1	57.9	-0.7	-1.2%	-0.2	-0.3%
State Government	99.1	105.2	105.6	6.5	6.6%	0.4	0.4%
Local Government	295.0	299.1	299.5	4.5	1.5%	0.4	0.1%

Major Changes in Seasonally Adjusted Nonfarm Employment (in thousands)

Monthly Change from July 2025 to August 2025

Major Employment Increases	July 2025	August 2025	Change
Transportation, Warehousing, and Utilities	211.2	213.4	2.2
Retail Trade	349.9	351.9	2.0
Construction	162.2	164.2	2.0
Major Employment Decreases			
Wholesale Trade	139.4	138.7	-0.7
Arts, Entertainment, and Recreation	52.3	51.6	-0.7
Non-Durable Goods Manufacturing	125.7	125.2	-0.5

Yearly Change from August 2024 to August 2025

Major Employment Increases	August 2024	August 2025	Change
Government	452.7	463.0	10.3
Professional and Business Services	452.2	460.2	8.0
Leisure and Hospitality	366.8	373.2	6.4
Major Employment Decreases			
Non-Durable Goods Manufacturing	128.8	125.2	-3.6
Financial Activities	192.7	190.9	-1.8
Transportation, Warehousing, and Utilities	214.1	213.4	-0.7

Hours and Earnings of Production Workers (Manufacturing)

Tennessee	Average Weekly Earnings			Average Weekly Hours			Average Hourly Earnings		
	Aug. 2024	July 2025	Aug. 2025	Aug. 2024	July 2025	Aug. 2025	Aug. 2024	July 2025	Aug. 2025
Manufacturing	\$973.20	\$1,014.65	\$1,018.03	40.0	40.7	41.0	\$24.33	\$24.93	\$24.83
Durable Goods	\$1,038.83	\$1,037.80	\$1,050.06	40.5	39.9	40.7	\$25.65	\$26.01	\$25.80
Non-durable Goods	\$858.48	\$972.48	\$956.38	39.2	42.3	41.6	\$21.90	\$22.99	\$22.99

HOURS AND EARNINGS OF PRODUCTION WORKERS - ALL MANUFACTURING

(July 2025 preliminary average hours and earnings; August 2025 will be available later this month)

	Average Weekly Earnings			Average Weekly Hours			Average Hourly Earnings		
	July 2024	July 2025	Pct. Change	July 2024	July 2025	Pct. Change	July 2024	July 2025	Pct. Change
Alabama	\$990.22	\$1,097.26	10.8%	40.8	42.3	3.7%	\$24.27	\$25.94	6.9%
Arkansas	\$855.76	\$904.11	5.6%	38.0	38.1	0.3%	\$22.52	\$23.73	5.4%
Florida	\$1,227.76	\$1,193.73	-2.8%	41.2	40.7	-1.2%	\$29.80	\$29.33	-1.6%
Georgia	\$972.52	\$980.48	0.8%	41.0	40.2	-2.0%	\$23.72	\$24.39	2.8%
Kentucky	\$1,102.07	\$1,159.53	5.2%	41.4	41.8	1.0%	\$26.62	\$27.74	4.2%
Mississippi	\$920.70	\$984.30	6.9%	40.1	42.1	5.0%	\$22.96	\$23.38	1.8%
North Carolina	\$926.20	\$936.85	1.1%	39.7	39.9	0.5%	\$23.33	\$23.48	0.6%
South Carolina	\$947.57	\$1,105.05	16.6%	37.0	39.2	5.9%	\$25.61	\$28.19	10.1%
Tennessee	\$1,009.42	\$1,012.56	0.3%	41.1	40.6	-1.2%	\$24.56	\$24.94	1.5%
Virginia	\$1,055.74	\$1,102.85	4.5%	39.6	38.4	-3.0%	\$26.66	\$28.72	7.7%

UNEMPLOYMENT RATES, 2014-2025
U.S. & Tennessee, Seasonally Adjusted & Not Seasonally Adjusted

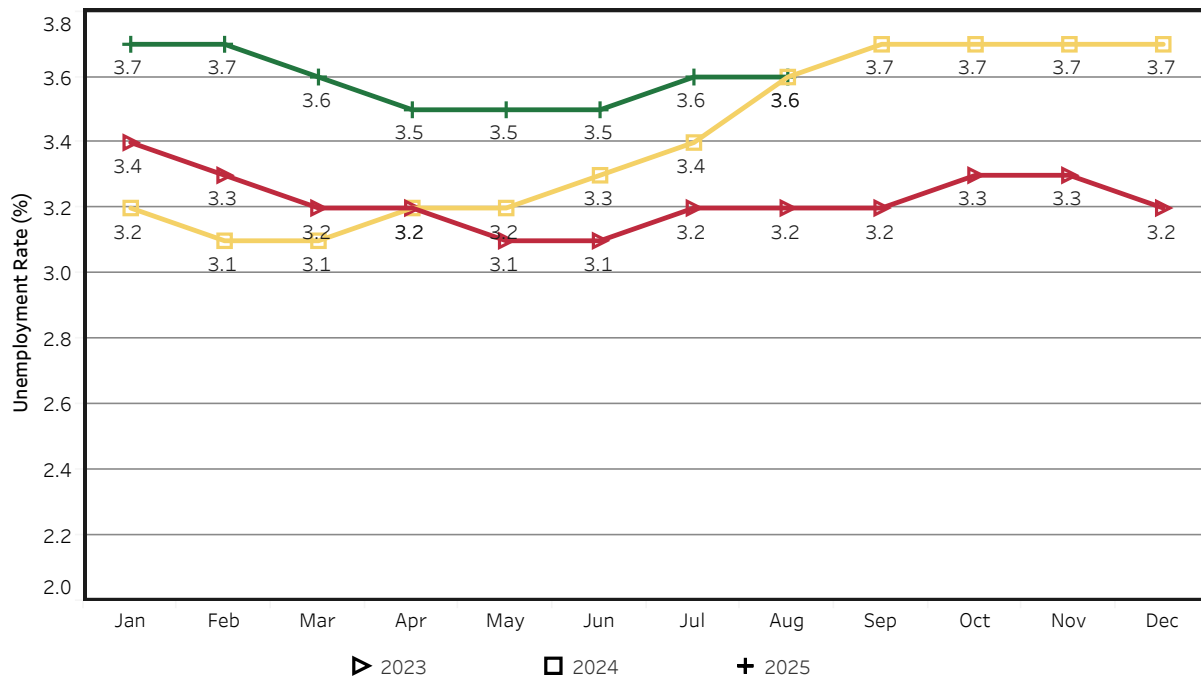
	2014				2015				2016				2017			
	U.S.		TN		U.S.		TN		U.S.		TN		U.S.		TN	
	Seas. Adj.	Not Seas. Adj.	Seas. Adj.	Not Seas. Adj.	Seas. Adj.	Not Seas. Adj.	Seas. Adj.	Not Seas. Adj.	Seas. Adj.	Not Seas. Adj.	Seas. Adj.	Not Seas. Adj.	Seas. Adj.	Not Seas. Adj.	Seas. Adj.	Not Seas. Adj.
Jan	6.6	7.0	6.9	7.0	5.7	6.1	6.1	6.5	4.8	5.3	4.8	5.0	4.7	5.1	4.5	5.0
Feb	6.7	7.0	6.8	7.0	5.5	5.8	6.0	6.1	4.9	5.2	4.7	4.8	4.6	4.9	4.3	4.5
Mar	6.7	6.8	6.7	6.8	5.4	5.6	5.9	5.8	5.0	5.1	4.7	4.7	4.4	4.6	4.1	4.1
Apr	6.2	5.9	6.7	6.0	5.4	5.1	5.8	5.3	5.1	4.7	4.7	4.3	4.4	4.1	3.9	3.4
May	6.3	6.1	6.7	6.3	5.6	5.3	5.7	5.6	4.8	4.5	4.7	4.2	4.4	4.1	3.7	3.3
Jun	6.1	6.3	6.6	7.1	5.3	5.5	5.6	6.1	4.9	5.1	4.7	5.2	4.3	4.5	3.6	4.1
Jul	6.2	6.5	6.6	7.2	5.2	5.6	5.5	5.9	4.8	5.1	4.7	5.1	4.3	4.6	3.5	3.9
Aug	6.1	6.3	6.5	6.7	5.1	5.2	5.4	5.4	4.9	5.0	4.8	4.9	4.4	4.5	3.4	3.6
Sep	5.9	5.7	6.5	6.4	5.0	4.9	5.3	5.2	5.0	4.8	4.8	4.9	4.3	4.1	3.4	3.3
Oct	5.7	5.5	6.4	6.1	5.0	4.8	5.1	5.1	4.9	4.7	4.8	4.7	4.2	3.9	3.4	3.3
Nov	5.8	5.5	6.3	6.1	5.1	4.8	5.0	4.9	4.7	4.4	4.8	4.4	4.2	3.9	3.5	3.3
Dec	5.6	5.4	6.2	5.9	5.0	4.8	4.9	4.7	4.7	4.5	4.7	4.5	4.1	3.9	3.5	3.2
Avg		6.2		6.5		5.3		5.5		4.9		4.7		4.4		3.7

	2018				2019				2020				2021			
	U.S.		TN		U.S.		TN		U.S.		TN		U.S.		TN	
	Seas. Adj.	Not Seas. Adj.	Seas. Adj.	Not Seas. Adj.	Seas. Adj.	Not Seas. Adj.	Seas. Adj.	Not Seas. Adj.	Seas. Adj.	Not Seas. Adj.	Seas. Adj.	Not Seas. Adj.	Seas. Adj.	Not Seas. Adj.	Seas. Adj.	Not Seas. Adj.
Jan	4.0	4.5	3.5	3.9	4.0	4.4	3.5	3.9	3.6	4.0	3.4	3.7	6.4	6.8	5.4	5.7
Feb	4.1	4.4	3.5	3.6	3.8	4.1	3.4	3.4	3.5	3.8	3.5	3.4	6.2	6.6	5.2	5.3
Mar	4.0	4.1	3.5	3.5	3.8	3.9	3.4	3.4	4.4	4.5	3.5	3.9	6.1	6.2	5.1	5.1
Apr	4.0	3.7	3.5	3.0	3.7	3.3	3.4	2.9	14.8	14.4	15.7	15.0	6.1	5.7	5.0	4.7
May	3.8	3.6	3.5	3.1	3.6	3.4	3.3	3.1	13.2	13.0	12.1	11.8	5.8	5.5	4.9	4.6
Jun	4.0	4.2	3.5	4.1	3.6	3.8	3.2	3.8	11.0	11.2	10.2	10.8	5.9	6.1	4.7	5.6
Jul	3.8	4.1	3.5	3.9	3.7	4.0	3.2	3.7	10.2	10.5	9.0	10.1	5.4	5.7	4.4	4.9
Aug	3.8	3.9	3.5	3.6	3.6	3.8	3.2	3.3	8.4	8.5	7.6	7.7	5.1	5.3	4.2	4.4
Sep	3.7	3.6	3.5	3.4	3.5	3.3	3.3	3.1	7.8	7.7	7.1	6.9	4.7	4.6	3.9	3.8
Oct	3.8	3.5	3.5	3.4	3.6	3.3	3.3	3.3	6.9	6.6	6.3	5.9	4.5	4.3	3.7	3.5
Nov	3.8	3.5	3.5	3.1	3.6	3.3	3.4	3.1	6.7	6.4	5.9	5.4	4.2	3.9	3.6	3.2
Dec	3.9	3.7	3.5	3.2	3.6	3.4	3.4	3.1	6.7	6.5	5.6	5.4	3.9	3.7	3.5	3.0
Avg		3.9		3.5		3.7		3.3		8.1		7.4		5.3		4.5

	2022				2023				2024				2025			
	U.S.		TN		U.S.		TN		U.S.		TN		U.S.		TN	
	Seas. Adj.	Not Seas. Adj.	Seas. Adj.	Not Seas. Adj.	Seas. Adj.	Not Seas. Adj.	Seas. Adj.	Not Seas. Adj.	Seas. Adj.	Not Seas. Adj.	Seas. Adj.	Not Seas. Adj.	Seas. Adj.	Not Seas. Adj.	Seas. Adj.	Not Seas. Adj.
Jan	4.0	4.4	3.4	3.7	3.5	3.9	3.4	3.6	3.7	4.1	3.2	3.3	4.0	4.4	3.7	3.8
Feb	3.8	4.1	3.4	3.4	3.6	3.9	3.3	3.4	3.9	4.2	3.1	3.1	4.1	4.5	3.7	3.5
Mar	3.7	3.8	3.3	3.2	3.5	3.6	3.2	3.2	3.9	3.9	3.1	3.1	4.2	4.2	3.6	3.3
Apr	3.7	3.3	3.3	3.0	3.4	3.1	3.2	2.7	3.9	3.5	3.2	2.8	4.2	3.9	3.5	2.9
May	3.6	3.4	3.3	3.1	3.6	3.4	3.1	3.1	4.0	3.7	3.2	2.9	4.2	4.0	3.5	3.3
Jun	3.6	3.8	3.3	4.0	3.6	3.8	3.1	3.7	4.1	4.3	3.3	3.9	4.1	4.4	3.5	4.0
Jul	3.5	3.8	3.3	3.7	3.5	3.8	3.2	3.5	4.2	4.5	3.4	3.9	4.2	4.6	3.6	4.4
Aug	3.6	3.8	3.3	3.5	3.7	3.9	3.2	3.3	4.2	4.4	3.6	3.7	4.3	4.5	3.6	3.6
Sep	3.5	3.3	3.4	3.2	3.8	3.6	3.2	3.3	4.1	3.9	3.7	3.5				
Oct	3.6	3.4	3.4	3.4	3.9	3.6	3.3	3.3	4.1	3.9	3.7	3.6				
Nov	3.6	3.4	3.4	3.2	3.7	3.5	3.3	3.0	4.2	4.0	3.7	3.7				
Dec	3.5	3.3	3.4	3.0	3.8	3.5	3.2	2.9	4.1	3.8	3.7	3.5				
Avg		3.6		3.4		3.6		3.2		4.0		3.4				

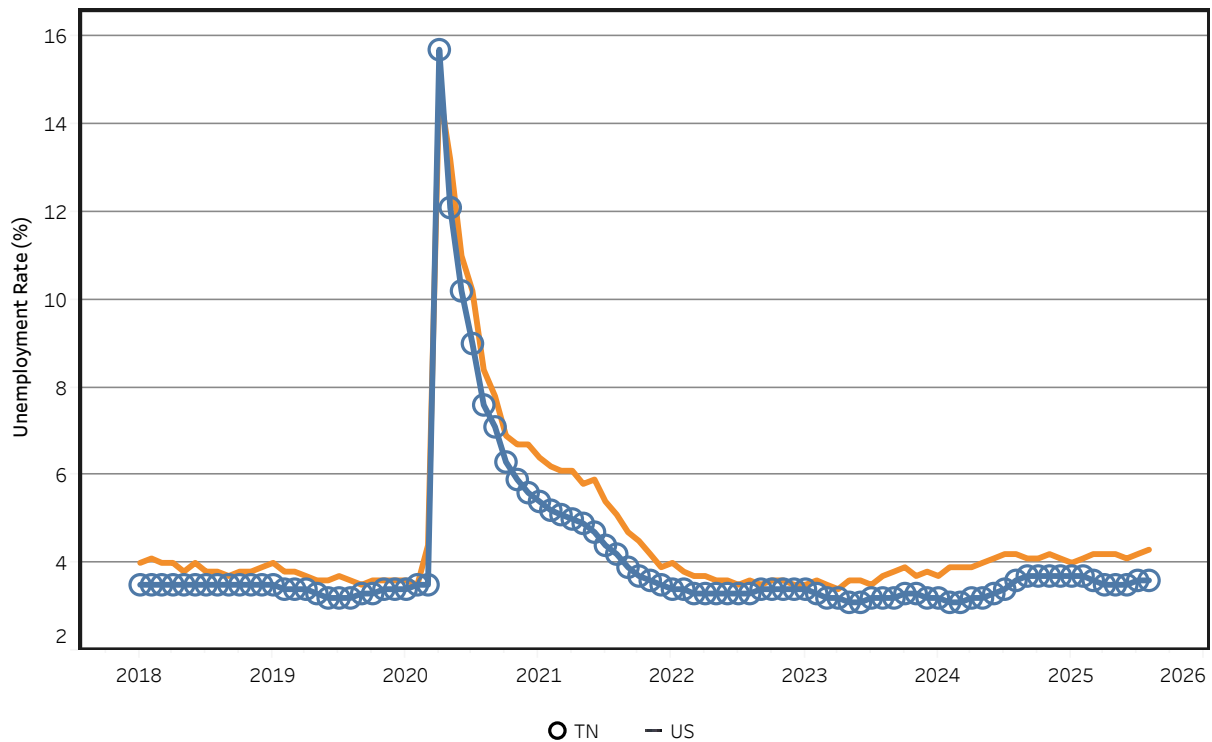
Unemployment Rates - Tennessee

Seasonally Adjusted - 2023 to 2025



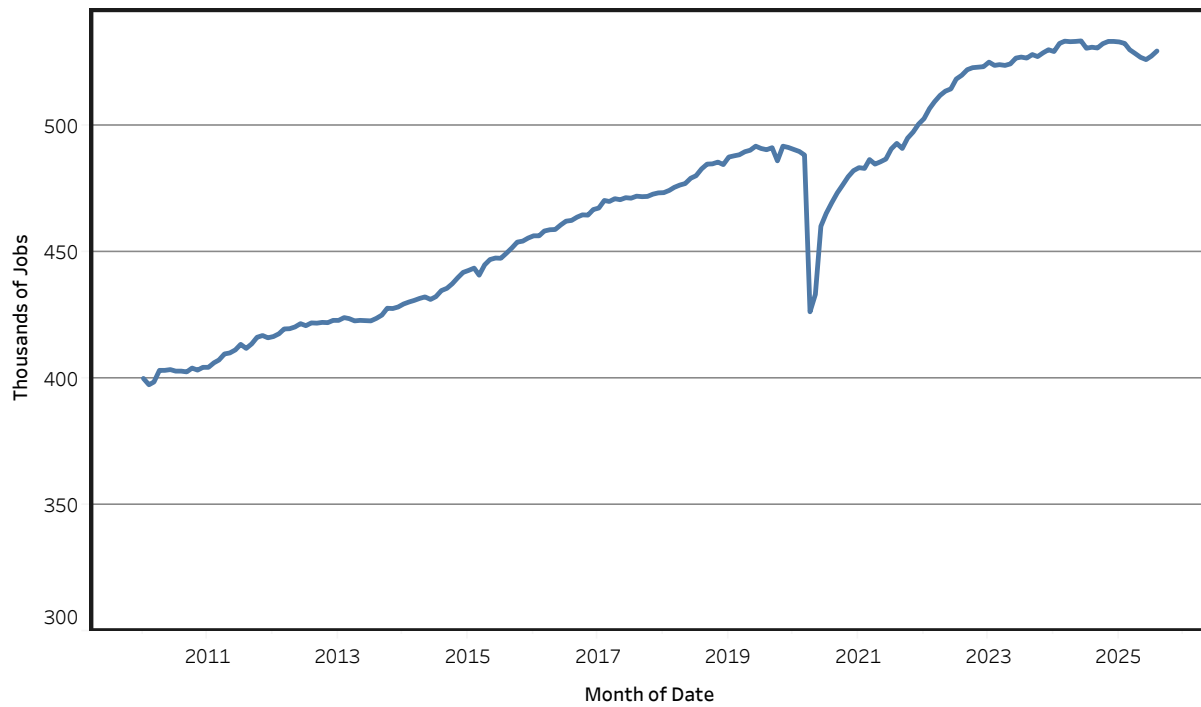
Unemployment Rates - US & Tennessee

Seasonally Adjusted - January 2018 to August 2025



Goods - Producing Jobs in Tennessee

Seasonally Adjusted - Jan 2010 to Aug 2025



Service - Providing Jobs in Tennessee

Seasonally Adjusted - Jan 2010 to Aug 2025

