

TENNESSEE ECONOMIC ANALYSIS

March 2023

NOT TO BE RELEASED BEFORE:

TIME: 1:30 PM CT

DAY: Thursday, April 20, 2023

Prepared by:

Tennessee Department of Labor and Workforce Development

Workforce Insights, Research and Reporting Engine Division

Table of Contents

Economic Indicators

	<u>Page</u>
Briefing Packet Summary	1
Labor Force Estimates Summary - Household Survey	2
Seasonally Adjusted Nonfarm Employment	3
Major Changes in Seasonally Adjusted Nonfarm Employment	3
Business Survey - Not Seasonally Adjusted	4-5

Appendix

Unemployment Rates, 2012 - 2023	6
Hours and Earnings of Production Workers	7

Graphs

Tennessee Unemployment Rates	8
Unemployment Rates - U.S. and Tennessee	8
Goods - Producing Jobs in Tennessee	9
Service - Providing Jobs in Tennessee	9

BRIEFING PACKET SUMMARY

March 2023 pre.

Unemployment Rates

Tennessee	March 2022	February 2023 rev.	March 2023 pre.	Change From:	
				Year Ago	Month Ago
Not Seasonally Adjusted	3.2%	3.6%	3.1%	-0.1%	-0.5%
Seasonally Adjusted	3.3%	3.5%	3.4%	0.1%	-0.1%

United States

Not Seasonally Adjusted	3.8%	3.9%	3.6%	-0.2%	-0.3%
Seasonally Adjusted	3.6%	3.6%	3.5%	-0.1%	-0.1%

Hours and Earnings of Production Workers (Manufacturing)

Tennessee	February 2023 rev.	March 2023 pre.	Change
Average Weekly Earnings	\$953.93	\$964.70	\$10.77
Average Weekly Hours	41.1	41.6	0.5
Average Hourly Earnings	\$23.21	\$23.19	-\$0.02

United States

Average Weekly Earnings	\$1045.04	\$1053.72	\$8.68
Average Weekly Hours	40.6	40.7	0.1
Average Hourly Earnings	\$25.74	\$25.89	\$0.15

Summary

Tennessee's March seasonally adjusted unemployment rate decreased to 3.4% from February's 3.5%.

Over the past year Tennessee's seasonally adjusted unemployment rate increased from 3.3% to 3.4% while the United States' rate decreased from 3.6% to 3.5%.

Over the year, nonfarm employment increased by 96,900 jobs. The largest increases were in Leisure and Hospitality, Education and Health Services, and Government.

Over the month, total nonfarm employment increased by 1,700 jobs. The largest increases were in Leisure and Hospitality, Manufacturing, and Education and Health Services.

LABOR FORCE ESTIMATES SUMMARY

Tennessee* Not Seasonally Adjusted	March 2022	Revised February 2022	Preliminary March 2023	Change from March 2022 to March 2023		Change from February 2023 to March 2023	
Civilian Labor Force	3,375,604	3,361,917	3,364,645	-10,959	-0.3%	2,728	0.1%
Labor Force Participation Rate	60.6%	59.5%	59.5%	-1.1	percentage points	0.0	percentage points
Employment	3,266,594	3,241,511	3,259,346	-7,248	-0.2%	17,835	0.6%
Unemployment	109,010	120,406	105,299	-3,711	-3.4%	-15,107	-12.5%
Unemployment Rate	3.2%	3.6%	3.1%	-0.1	percentage points	-0.5	percentage points

Seasonally Adjusted

Civilian Labor Force	3,380,792	3,328,111	3,338,228	-42,564	-1.3%	10,117	0.3%
Labor Force Participation Rate	60.7%	58.9%	59.0%	-1.7	percentage points	0.1	percentage points
Employment	3,267,802	3,211,637	3,224,349	-43,453	-1.3%	12,712	0.4%
Unemployment	112,990	116,474	113,879	889	0.8%	-2,595	-2.2%
Unemployment Rate	3.3%	3.5%	3.4%	0.1	percentage points	-0.1	percentage points

United States** Not Seasonally Adjusted	March 2022	Revised February 2022	Preliminary March 2023	Change from March 2022 to March 2023		Change from February 2023 to March 2023	
Civilian Labor Force	164,274,000	166,178,000	166,783,000	2,509,000	1.5%	605,000	0.4%
Labor Force Participation Rate	62.4%	62.4%	62.6%	0.2	percentage points	0.2	percentage points
Employment	158,106,000	159,713,000	160,741,000	2,635,000	1.7%	1,028,000	0.6%
Unemployment	6,168,000	6,465,000	6,043,000	-125,000	-2.0%	-422,000	-6.5%
Unemployment Rate	3.8%	3.9%	3.6%	-0.2	percentage points	-0.3	percentage points

Seasonally Adjusted

Civilian Labor Force	164,301,000	166,251,000	166,731,000	2,430,000	1.5%	480,000	0.3%
Labor Force Participation Rate	62.4%	62.5%	62.6%	0.2	percentage points	0.1	percentage points
Employment	158,328,000	160,315,000	160,892,000	2,564,000	1.6%	577,000	0.4%
Unemployment	5,972,000	5,936,000	5,839,000	-133,000	-2.2%	-97,000	-1.6%
Unemployment Rate	3.6%	3.6%	3.5%	-0.1	percentage points	-0.1	percentage points

* Error range for Tennessee estimates cannot be computed

** Error range for U.S. estimates is +/- 0.2%

Seasonally Adjusted Nonfarm Employment

(numbers in thousands)

Annual Change Monthly Change

	March 2022	February 2023 rev.	March 2023 pre.	March 2022 to March 2023		February 2023 to March 2023	
				Net Chg.	% chg.	Net Chg.	% chg.
				Total Non-Farm	3,214.0	3,309.2	3,310.9
Mining, Logging and Construction	148.9	157.0	155.6	6.7	4.5%	-1.4	-0.9%
Mining and Logging	4.4	4.5	4.5	0.1	2.3%	0.0	0.0%
Construction	144.5	152.5	151.1	6.6	4.6%	-1.4	-0.9%
Manufacturing	360.8	367.4	368.9	8.1	2.2%	1.5	0.4%
Durable Goods Manufacturing	229.9	234.3	235.7	5.8	2.5%	1.4	0.6%
Non-Durable Goods Manufacturing	130.9	133.1	133.2	2.3	1.8%	0.1	0.1%
Trade, Transportation, and Utilities	675.8	686.5	685.0	9.2	1.4%	-1.5	-0.2%
Wholesale Trade	126.9	135.1	135.2	8.3	6.5%	0.1	0.1%
Retail Trade	341.8	341.3	340.6	-1.2	-0.4%	-0.7	-0.2%
Transportation, Warehousing, and Utilities	207.1	210.1	209.2	2.1	1.0%	-0.9	-0.4%
Information	53.4	56.5	56.4	3.0	5.6%	-0.1	-0.2%
Financial Activities	173.5	174.2	173.7	0.2	0.1%	-0.5	-0.3%
Finance and Insurance	131.6	131.3	131.2	-0.4	-0.3%	-0.1	-0.1%
Real Estate, Rental, and Leasing	41.9	42.9	42.5	0.6	1.4%	-0.4	-0.9%
Professional and Business Services	462.0	473.3	472.7	10.7	2.3%	-0.6	-0.1%
Professional, Scientific, and Technical Services	166.7	177.7	178.0	11.3	6.8%	0.3	0.2%
Management of Companies and Enterprises	53.6	54.7	54.6	1.0	1.9%	-0.1	-0.2%
Administrative, Support, and Waste Services	241.7	240.9	240.1	-1.6	-0.7%	-0.8	-0.3%
Education and Health Services	445.7	461.3	462.4	16.7	3.7%	1.1	0.2%
Educational Services	63.5	65.2	65.2	1.7	2.7%	0.0	0.0%
Health Care and Social Assistance	382.2	396.1	397.2	15.0	3.9%	1.1	0.3%
Leisure and Hospitality	337.3	360.2	362.6	25.3	7.5%	2.4	0.7%
Arts, Entertainment, and Recreation	41.6	44.9	45.9	4.3	10.3%	1.0	2.2%
Accommodation and Food Services	295.7	315.3	316.7	21.0	7.1%	1.4	0.4%
Other Services	124.5	128.6	128.8	4.3	3.5%	0.2	0.2%
Government	432.1	444.2	444.8	12.7	2.9%	0.6	0.1%
Federal Government	51.9	54.0	54.5	2.6	5.0%	0.5	0.9%
State Government	94.6	95.8	95.3	0.7	0.7%	-0.5	-0.5%
Local Government	285.6	294.4	295.0	9.4	3.3%	0.6	0.2%

Major Changes in Seasonally Adjusted Nonfarm Employment (in thousands)

I. Monthly Change (from February 2023 rev. to March 2023 pre.)

	February 2023 rev.	March 2023 pre.	Change
A. Major Employment Increases			
Leisure and Hospitality	360.2	362.6	2.4
Manufacturing	367.4	368.9	1.5
Education and Health Services	461.3	462.4	1.1
B. Major Employment Decreases			
Trade, Transportation, and Utilities	686.5	685.0	-1.5
Mining, Logging and Construction	157.0	155.6	-1.4
Professional and Business Services	473.3	472.7	-0.6

II. Yearly Change (from March 2022 to March 2023 pre.)

	March 2022	March 2023 pre.	Change
A. Major Employment Increases			
Leisure and Hospitality	337.3	362.6	25.3
Education and Health Services	445.7	462.4	16.7
Government	432.1	444.8	12.7
B. Major Employment Decreases			
Administrative, Support, and Waste Services	241.7	240.1	-1.6
Retail Trade	341.8	340.6	-1.2
Finance and Insurance	131.6	131.2	-0.4

BUSINESS SURVEY - Not Seasonally Adjusted

Estimated Nonfarm Employment by Industry*

(numbers in thousands)	March 2022	February 2023 rev.	March 2023 pre.	Annual Change		Monthly Change	
				March 2022 to March 2023		February 2023 to March 2023	
				Net Chg.	% chg.	Net Chg.	% chg.
Total Non-Farm	3,204.5	3,292.4	3,298.6	94.1	2.9%	6.2	0.2%
Total Private	2,764.0	2,842.0	2,846.9	82.9	3.0%	4.9	0.2%
Goods Producing	508.4	522.4	523.9	15.5	3.0%	1.5	0.3%
Mining, Logging and Construction	147.5	154.2	154.0	6.5	4.4%	-0.2	-0.1%
Manufacturing	360.9	368.2	369.9	9.0	2.5%	1.7	0.5%
Durable Goods Manufacturing	230.1	235.0	236.3	6.2	2.7%	1.3	0.6%
Wood Products	13.9	14.0	14.1	0.2	1.4%	0.1	0.7%
Non-Metallic Mineral Products	14.7	15.1	15.2	0.5	3.4%	0.1	0.7%
Primary Metal Products	11.2	11.0	11.0	-0.2	-1.8%	0.0	0.0%
Fabricated Metal Products	41.0	41.8	41.8	0.8	2.0%	0.0	0.0%
Machinery Manufacturing	24.5	24.6	24.7	0.2	0.8%	0.1	0.4%
Computer and Electronic Products	6.5	6.9	6.9	0.4	6.2%	0.0	0.0%
Electrical Equipment and Appliances	19.0	18.7	18.7	-0.3	-1.6%	0.0	0.0%
Transportation Equipment	72.3	76.4	77.2	4.9	6.8%	0.8	1.0%
Furniture and Related Products	9.7	9.3	9.4	-0.3	-3.1%	0.1	1.1%
Miscellaneous Durable Manufacturing	17.3	17.2	17.3	0.0	0.0%	0.1	0.6%
Non-Durable Goods Manufacturing	130.8	133.2	133.6	2.8	2.1%	0.4	0.3%
Food Manufacturing	38.4	40.3	40.5	2.1	5.5%	0.2	0.5%
Beverage and Tobacco Products	8.8	9.3	9.3	0.5	5.7%	0.0	0.0%
Paper Manufacturing	13.5	13.4	13.5	0.0	0.0%	0.1	0.7%
Printing and Related Support Activities	8.1	8.3	8.3	0.2	2.5%	0.0	0.0%
Chemical Manufacturing	26.4	26.9	26.8	0.4	1.5%	-0.1	-0.4%
Plastics and Rubber Products	25.4	25.2	25.2	-0.2	-0.8%	0.0	0.0%
Service Providing	2,696.1	2,770.0	2,774.7	78.6	2.9%	4.7	0.2%
Private Service Providing (Service Providing Less Government)	2,255.6	2,319.6	2,323.0	67.4	3.0%	3.4	0.1%
Trade, Transportation, and Utilities	673.1	685.5	681.5	8.4	1.2%	-4.0	-0.6%
Wholesale Trade	126.8	134.6	135.2	8.4	6.6%	0.6	0.4%
Merchant wholesalers, Durable Goods	74.7	79.8	80.4	5.7	7.6%	0.6	0.8%
Merchant wholesalers, Non-Durable Goods	44.5	46.9	46.8	2.3	5.2%	-0.1	-0.2%
Wholesale Electronic Markets	7.6	7.9	8.0	0.4	5.3%	0.1	1.3%
Retail Trade	340.3	340.8	339.3	-1.0	-0.3%	-1.5	-0.4%
Motor Vehicle and Parts Dealers	47.3	48.1	47.8	0.5	1.1%	-0.3	-0.6%
Furniture and Home Furnishings Stores	10.4	19.4	19.2	8.8	84.6%	-0.2	-1.0%
Building Material and Garden Supply Stores	34.0	32.9	33.3	-0.7	-2.1%	0.4	1.2%
Food and Beverage Stores	58.3	60.6	60.2	1.9	3.3%	-0.4	-0.7%
Health and Personal Care Stores	26.7	25.4	25.1	-1.6	-6.0%	-0.3	-1.2%
Gasoline Stations	24.3	26.3	26.0	1.7	7.0%	-0.3	-1.1%
Clothing and Clothing Accessories Stores	21.2	23.1	23.0	1.8	8.5%	-0.1	-0.4%
Sporting Goods, Hobby, Book, and Music Stores	29.9	30.5	30.2	0.3	1.0%	-0.3	-1.0%
General Merchandise Stores	77.5	74.5	74.5	-3.0	-3.9%	0.0	0.0%
Transportation, Warehousing, and Utilities	206.0	210.1	207.0	1.0	0.5%	-3.1	-1.5%
Utilities	4.1	4.2	4.2	0.1	2.4%	0.0	0.0%
Transportation and Warehousing	201.9	205.9	202.8	0.9	0.4%	-3.1	-1.5%
Information	52.8	56.3	56.3	3.5	6.6%	0.0	0.0%
Financial Activities	172.5	173.0	172.6	0.1	0.1%	-0.4	-0.2%
Finance and Insurance	131.2	131.2	130.6	-0.6	-0.5%	-0.6	-0.5%
Real Estate, Rental, and Leasing	41.3	41.8	42.0	0.7	1.7%	0.2	0.5%
Professional and Business Services	457.1	467.6	467.8	10.7	2.3%	0.2	0.0%
Professional, Scientific, and Technical Services	167.9	178.4	179.3	11.4	6.8%	0.9	0.5%
Management of Companies and Enterprises	53.5	54.5	54.3	0.8	1.5%	-0.2	-0.4%
Administrative, Support, and Waste Services	235.7	234.7	234.2	-1.5	-0.6%	-0.5	-0.2%
Education and Health Services	447.5	462.5	463.6	16.1	3.6%	1.1	0.2%
Educational Services	66.5	67.4	66.9	0.4	0.6%	-0.5	-0.7%
Health Care and Social Assistance	381.0	395.1	396.7	15.7	4.1%	1.6	0.4%
Ambulatory Health Care Services	163.5	170.9	171.8	8.3	5.1%	0.9	0.5%
Hospitals	109.8	113.9	114.2	4.4	4.0%	0.3	0.3%
Nursing and Residential Care Facilities	54.9	57.8	57.5	2.6	4.7%	-0.3	-0.5%
Social Assistance	52.8	52.5	53.2	0.4	0.8%	0.7	1.3%
Leisure and Hospitality	329.0	347.1	353.2	24.2	7.4%	6.1	1.8%
Arts, Entertainment, and Recreation	37.9	39.2	42.6	4.7	12.4%	3.4	8.7%
Accommodation and Food Services	291.1	307.9	310.6	19.5	6.7%	2.7	0.9%
Accommodation	34.3	37.9	37.5	3.2	9.3%	-0.4	-1.1%
Food Services and Drinking Places	256.8	270.0	273.1	16.3	6.3%	3.1	1.1%

Other Services	123.6	127.6	128.0	4.4	3.6%	0.4	0.3%
Government	440.5	450.4	451.7	11.2	2.5%	1.3	0.3%
Federal Government	51.8	54.2	54.4	2.6	5.0%	0.2	0.4%
State Government	98.7	98.7	98.7	0.0	0.0%	0.0	0.0%
State Government Educational Services	59.1	58.4	58.3	-0.8	-1.4%	-0.1	-0.2%
State Government Excluding Education	39.6	40.3	40.4	0.8	2.0%	0.1	0.2%
Local Government	290.0	297.5	298.6	8.6	3.0%	1.1	0.4%
Local Government Educational Services	147.4	149.3	150.1	2.7	1.8%	0.8	0.5%
Local Government Excluding Education	142.6	148.2	148.5	5.9	4.1%	0.3	0.2%

* Estimates include all full- and part-time nonagricultural wage and salary employees who worked during, or received pay for, any part of the pay period which include the 12th of the month. This is a count of jobs by place of work. Agricultural workers, proprietors, self-employed persons, workers in private households, and unpaid family workers are excluded.

Unemployment Rates, 2012-2023

U.S. & Tennessee, Seasonally Adjusted & Not Seasonally Adjusted

	2012				2013				2014				2015			
	U.S.		TN		U.S.		TN		U.S.		TN		U.S.		TN	
	Seas. Adj.	Not Seas. Adj.	Seas. Adj.	Not Seas. Adj.	Seas. Adj.	Not Seas. Adj.	Seas. Adj.	Not Seas. Adj.	Seas. Adj.	Not Seas. Adj.	Seas. Adj.	Not Seas. Adj.	Seas. Adj.	Not Seas. Adj.	Seas. Adj.	Not Seas. Adj.
Jan	8.3	8.8	8.2	8.6	8.0	8.5	8.0 -	8.7 *	6.6	7.0	6.9 *	7.1 *	5.7	6.1	6.1 *	6.6 *
Feb	8.3	8.7	8.1	8.4	7.7	8.1	8.0 *	8.2 *	6.7	7.0	6.8 *	7.1 *	5.5	5.8	6.1 *	6.2 *
Mar	8.2	8.4	8.0	8.1	7.5	7.6	8.0 *	7.9 *	6.7	6.8	6.8 *	6.9 *	5.4	5.6	6.0 *	5.9 *
Apr	8.2	7.7	8.0	7.5	7.6	7.1	8.0 *	7.4 *	6.2	5.9	6.7 *	6.0 *	5.4	5.1	5.9 *	5.3 *
May	8.2	7.9	8.0	7.7	7.5	7.3	7.9 *	7.6 *	6.3	6.1	6.7 *	6.3 *	5.6	5.3	5.8 *	5.6 *
Jun	8.2	8.4	8.0	8.6 *	7.5	7.8	7.9 *	8.5 *	6.1	6.3	6.7 *	7.1 *	5.3	5.5	5.7 *	6.2 *
Jul	8.2	8.6	8.0	8.6 -	7.3	7.7	7.8 *	8.2 *	6.2	6.5	6.6 *	7.3 *	5.2	5.6	5.5 *	6.0 *
Aug	8.1	8.2	7.9	8.0	7.2	7.3	7.7 *	7.7 *	6.1	6.3	6.6 *	6.9 *	5.1	5.2	5.4 *	5.5 *
Sep	7.8	7.6	7.8 -	7.5	7.2	7.0	7.6 *	7.5 *	5.9	5.7	6.5 *	6.4 *	5.0	4.9	5.3 *	5.2 *
Oct	7.8	7.5	7.8 -	7.6 *	7.2	7.0	7.4 *	7.5 *	5.7	5.5	6.4 *	6.1 *	5.0	4.8	5.1 *	5.0 *
Nov	7.7	7.4	7.8 *	7.3	6.9	6.6	7.3 *	6.9 *	5.8	5.5	6.3 *	6.1 *	5.1	4.8	5.0	4.9 *
Dec	7.9	7.6	7.9 -	7.7 *	6.7	6.5	7.1 *	6.8 *	5.6	5.4	6.2 *	5.9 *	5.0	4.8	4.9	4.7
Avg		8.1		8.0		7.4		7.8 *		6.2		6.6 *		5.3		5.6 *

	2016				2017				2018				2019			
	U.S.		TN		U.S.		TN		U.S.		TN		U.S.		TN	
	Seas. Adj.	Not Seas. Adj.	Seas. Adj.	Not Seas. Adj.	Seas. Adj.	Not Seas. Adj.	Seas. Adj.	Not Seas. Adj.	Seas. Adj.	Not Seas. Adj.	Seas. Adj.	Not Seas. Adj.	Seas. Adj.	Not Seas. Adj.	Seas. Adj.	Not Seas. Adj.
Jan	4.8	5.3	4.8 -	5.0	4.7	5.1	4.6	5.0	4.0	4.5	3.5	3.8	4.0	4.4	3.5	3.8
Feb	4.9	5.2	4.7	4.8	4.6	4.9	4.4	4.6	4.1	4.4	3.5	3.6	3.8	4.1	3.4	3.4
Mar	5.0	5.1	4.7	4.7	4.4	4.6	4.2	4.1	4.0	4.1	3.5	3.5	3.8	3.9	3.4	3.5
Apr	5.1	4.7	4.6	4.3	4.4	4.1	3.9	3.4	4.0	3.7	3.5	3.1	3.6	3.3	3.3	2.9
May	4.8	4.5	4.7	4.2	4.4	4.1	3.7	3.2	3.8	3.6	3.5	3.1	3.7	3.4	3.3	3.1
Jun	4.9	5.1	4.7	5.2 *	4.3	4.5	3.6	4.1	4.0	4.2	3.5	4.1	3.6	3.8	3.2	3.8 -
Jul	4.8	5.1	4.8 -	5.2 *	4.3	4.6	3.5	3.9	3.8	4.1	3.5	3.9	3.7	4.0	3.2	3.7
Aug	4.9	5.0	4.8	5.0 -	4.4	4.5	3.4	3.6	3.8	3.9	3.5	3.6	3.7	3.8	3.2	3.3
Sep	5.0	4.8	4.9	4.9 *	4.3	4.1	3.4	3.2	3.7	3.6	3.5	3.4	3.5	3.3	3.3	3.1
Oct	4.9	4.7	4.9 -	4.7 -	4.2	3.9	3.4	3.3	3.8	3.5	3.5	3.4	3.6	3.3	3.4	3.3 -
Nov	4.7	4.4	4.8	4.5 *	4.2	3.9	3.4	3.2	3.8	3.5	3.5	3.1	3.6	3.3	3.4	3.1
Dec	4.7	4.5	4.7 -	4.5 -	4.1	3.9	3.5	3.2	3.9	3.7	3.5	3.2	3.6	3.4	3.5	3.3
Avg		4.9		4.7		4.4		3.7		3.9		3.5		3.7		3.3

	2020				2021				2022				2023			
	U.S.		TN		U.S.		TN		U.S.		TN		U.S.		TN	
	Seas. Adj.	Not Seas. Adj.	Seas. Adj.	Not Seas. Adj.	Seas. Adj.	Not Seas. Adj.	Seas. Adj.	Not Seas. Adj.	Seas. Adj.	Not Seas. Adj.	Seas. Adj.	Not Seas. Adj.	Seas. Adj.	Not Seas. Adj.	Seas. Adj.	Not Seas. Adj.
Jan	3.5	4.0	3.5 -	3.7	6.3	6.8	5.4	5.6	4.0	4.4	3.5	3.7	3.4	3.9	3.5 *	3.5
Feb	3.5	3.8	3.5 -	3.4	6.2	6.6	5.3	5.3	3.8	4.1	3.4	3.5	3.6	3.9	3.5	3.6
Mar	4.4	4.5	3.5	3.9	6.1	6.2	5.1	5.2	3.6	3.8	3.3	3.2	3.5	3.6	3.4	3.1
Apr	14.7	14.4	15.8 *	15.0 *	6.1	5.7	5.0	4.7	3.6	3.3	3.3	3.1				
May	13.2	13.0	12.1	11.8	5.8	5.5	4.8	4.6	3.6	3.4	3.2	3.2				
Jun	11.0	11.2	10.1	10.8	5.9	6.1	4.6	5.6	3.6	3.8	3.2	4.0 *				
Jul	10.2	10.5	9.0	10.1	5.4	5.7	4.4	4.9	3.5	3.8	3.3	3.7				
Aug	8.4	8.5	7.7	7.8	5.2	5.3	4.2	4.4	3.7	3.8	3.3	3.6				
Sep	7.9	7.7	7.1	6.9	4.8	4.6	4.0	3.8	3.5	3.3	3.4	3.2				
Oct	6.9	6.6	6.4	6.0	4.5	4.3	3.8	3.5	3.7	3.4	3.5	3.4 -				
Nov	6.7	6.4	6.0	5.4	4.2	3.9	3.7	3.2	3.6	3.4	3.5	3.2				
Dec	6.7	6.5	5.7	5.4	3.9	3.7	3.6	3.1	3.5	3.3	3.5 -	2.9				
Avg		8.1		7.5		5.3		4.5		3.6		3.4				

* Designates when Tennessee's unemployment rate is greater than the U.S. rate

- Designates when Tennessee's unemployment rate is equal to the U.S. rate

HOURS AND EARNINGS OF PRODUCTION WORKERS

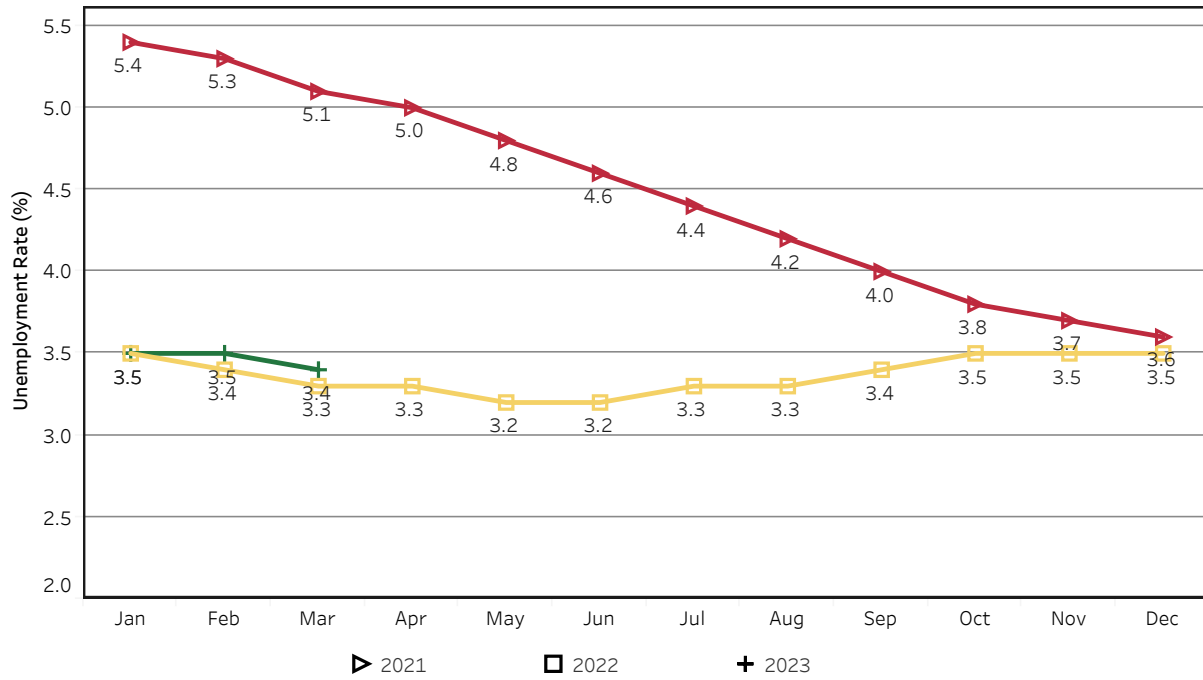
	Average Weekly Earning			Average Weekly Hours			Average Hourly Earning		
	March 2022	February 2023	March 2023	March 2022	February 2023	March 2023	March 2022	February 2023	March 2023
Manufacturing	\$988.72	\$953.93	\$964.70	44.1	41.1	41.6	\$22.42	\$23.21	\$23.19
Durable Goods	1044.64	1000.29	1026.08	44.7	41.3	42.7	23.37	24.22	24.03
Non-Durable Goods	896.40	877.20	862.47	43.2	40.8	39.8	20.75	21.50	21.67

HOURS AND EARNINGS OF PRODUCTION WORKERS - ALL MANUFACTURING

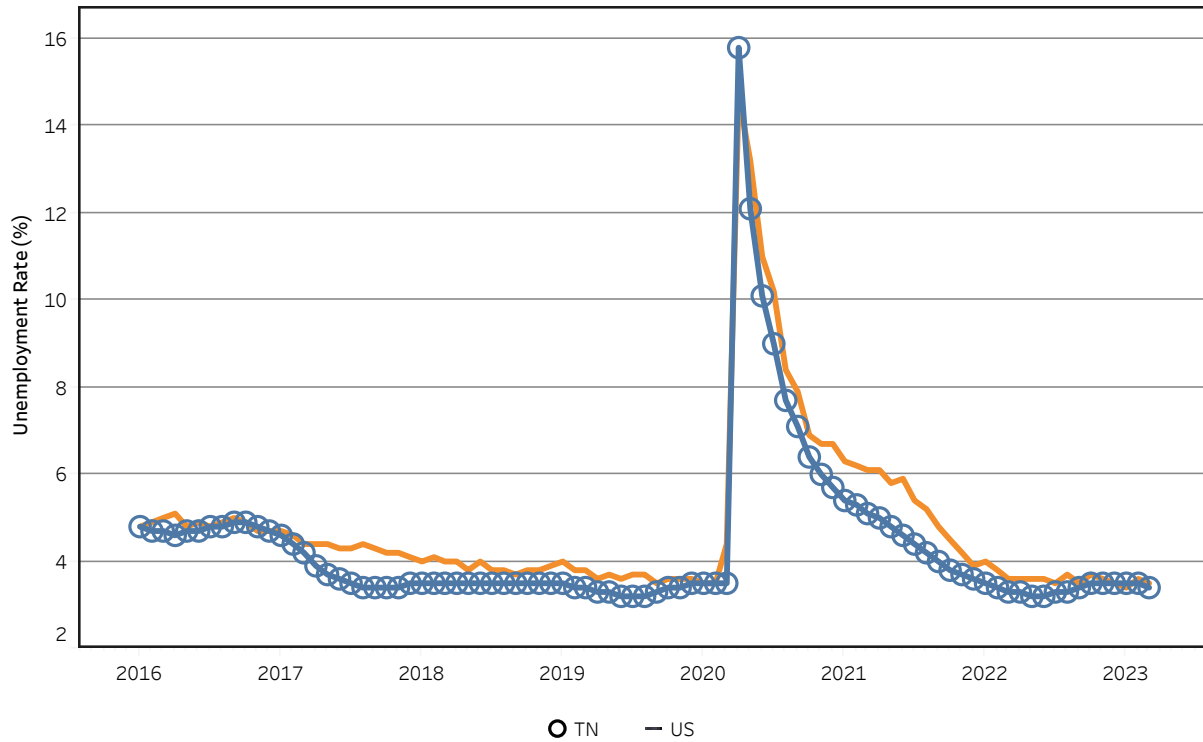
(ranked February 2023 preliminary average weekly earnings; March 2023 will be available later this month)

	Average Weekly Earning			Average Weekly Hours			Average Hourly Earning		
	February 2022	February 2023	Percent Change	February 2022	February 2023	Percent Change	February 2022	February 2023	Percent Change
FLORIDA	\$1087.1	\$1169.54	7.6%	42.30	42.10	-0.5%	\$25.70	\$27.78	8.1%
KENTUCKY	\$957.59	\$982.89	2.6%	39.80	40.20	1.0%	\$24.06	\$24.45	1.6%
VIRGINIA	\$880.34	\$978.91	11.2%	40.70	41.20	1.2%	\$21.63	\$23.76	9.8%
ALABAMA	\$919.91	\$976.62	6.2%	41.40	41.00	-1.0%	\$22.22	\$23.82	7.2%
GEORGIA	\$960.35	\$972.52	1.3%	41.90	41.00	-2.1%	\$22.92	\$23.72	3.5%
SOUTH CAROLINA	\$996.82	\$955.26	-4.2%	42.40	38.80	-8.5%	\$23.51	\$24.62	4.7%
TENNESSEE	\$977.80	\$947.77	-3.1%	43.40	41.10	-5.3%	\$22.53	\$23.06	2.4%
NORTH CAROLINA	\$888.53	\$861.33	-3.1%	42.80	40.40	-5.6%	\$20.76	\$21.32	2.7%
MISSISSIPPI	\$829.06	\$853.66	3.0%	40.70	41.20	1.2%	\$20.37	\$20.72	1.7%
ARKANSAS	\$811.24	\$813.83	0.3%	40.30	37.80	-6.2%	\$20.13	\$21.53	7.0%

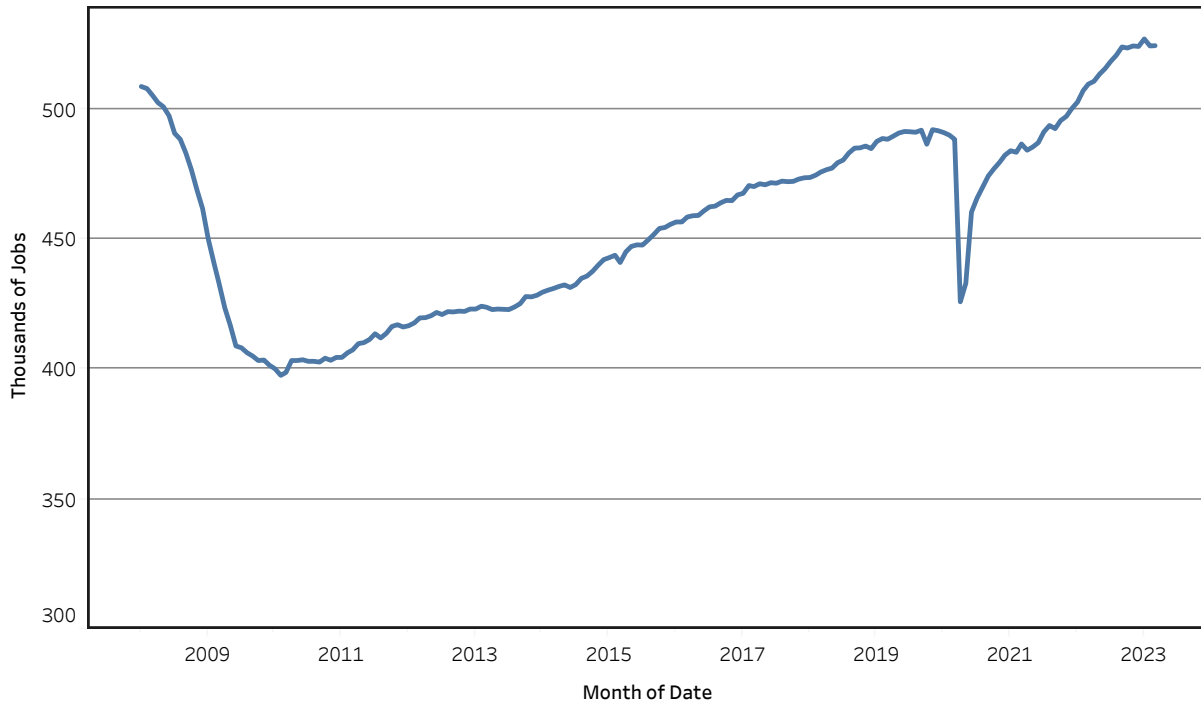
Unemployment Rates - Tennessee Seasonally Adjusted - 2021 to 2023



Unemployment Rates - US & Tennessee Seasonally Adjusted - January 2016 to March 2023



Goods - Producing Jobs in Tennessee Seasonally Adjusted - Jan 2008 to Mar 2023



Service - Providing Jobs in Tennessee Seasonally Adjusted - Jan 2008 to Mar 2023

