

TENNESSEE ECONOMIC ANALYSIS

January 2021

NOT TO BE RELEASED BEFORE:

TIME: 1:30 PM CT

DAY: Thursday, March 11, 2021

Prepared by:

Tennessee Department of Labor and Workforce Development

Workforce Insights, Research and Reporting Engine Division

Table of Contents

Economic Indicators

	<u>Page</u>
Briefing Packet Summary	1
Labor Force Estimates Summary - Household Survey	2
Seasonally Adjusted Nonfarm Employment	3
Major Changes in Seasonally Adjusted Nonfarm Employment	3
Business Survey - Not Seasonally Adjusted	4-5

Appendix

Unemployment Rates, 2010 - 2021	6
Hours and Earnings of Production Workers	7

Graphs

Tennessee Unemployment Rates	8
Unemployment Rates - U.S. and Tennessee	8
Goods - Producing Jobs in Tennessee	9
Service - Providing Jobs in Tennessee	9

BRIEFING PACKET SUMMARY

January 2021 pre.

Unemployment Rates

Tennessee	January 2020	December 2020 rev.	January 2021 pre.	Change From:	
				Year Ago	Month Ago
Not Seasonally Adjusted	4.0%	5.6%	5.4%	1.4%	-0.2%
Seasonally Adjusted	3.7%	5.6%	5.1%	1.4%	-0.5%

United States

Not Seasonally Adjusted	4.0%	6.5%	6.8%	2.8%	0.3%
Seasonally Adjusted	3.5%	6.7%	6.3%	2.8%	-0.4%

Hours and Earnings of Production Workers (Manufacturing)

Tennessee	December 2020	January 2021	Change
Average Weekly Earnings	\$910.79	\$875.68	-\$35.11
Average Weekly Hours	42.7	41.6	-1.1
Average Hourly Earnings	\$21.33	\$21.05	-\$0.28

United States

Average Weekly Earnings	\$973.34	\$957.75	-\$15.59
Average Weekly Hours	41.9	41.3	-0.6
Average Hourly Earnings	\$23.23	\$23.19	-\$0.04

Summary

Tennessee's January 2021 seasonally adjusted unemployment rate decreased to 5.1% from the December 2020 revised rate of 5.6%.

Over the past year, Tennessee's seasonally adjusted unemployment rate increased from 3.7% to 5.1% while the national rate increased from 3.5% to 6.3%.

Total nonfarm employment decreased 2,100 jobs from December 2020 to January 2021. The largest decreases occurred in leisure/hospitality, government, and professional/business services.

Over the year, nonfarm employment decreased 122,800 jobs. The largest decreases occurred in leisure/hospitality, education/health services, and government.

LABOR FORCE ESTIMATES SUMMARY

HOUSEHOLD SURVEY

Tennessee* Not Seasonally Adjusted	January 2020	Revised December 2020	Preliminary January 2021	Change from January 2020 to January 2021		Change from December 2020 to January 2021	
Civilian Labor Force	3,332,953	3,324,493	3,306,113	-26,840	-0.8%	-18,380	-0.6%
Labor Force Participation Rate	61.6%	60.8%	60.4%	-1.2	percentage points	-0.4	percentage points
Employment	3,200,454	3,138,615	3,128,694	-71,760	-2.2%	-9,921	-0.3%
Unemployment	132,499	185,878	177,419	44,920	33.9%	-8,459	-4.6%
Unemployment Rate	4.0%	5.6%	5.4%	1.4	percentage points	-0.2	percentage points

Seasonally Adjusted

Civilian Labor Force	3,338,446	3,313,650	3,316,943	-21,503	-0.6%	3,293	0.1%
Labor Force Participation Rate	61.7%	60.6%	60.6%	-1.1	percentage points	0.0	percentage points
Employment	3,214,183	3,127,609	3,146,636	-67,547	-2.1%	19,027	0.6%
Unemployment	124,263	186,041	170,307	46,044	37.1%	-15,734	-8.5%
Unemployment Rate	3.7%	5.6%	5.1%	1.4	percentage points	-0.5	percentage points

United States** Not Seasonally Adjusted	January 2020	Revised December 2020	Preliminary January 2021	Change from January 2020 to January 2021		Change from December 2020 to January 2021	
Civilian Labor Force	163,497,000	160,017,000	159,234,000	-4,263,000	-2.6%	-783,000	-0.5%
Labor Force Participation Rate	63.0%	61.3%	61.0%	-2.0	percentage points	-0.3	percentage points
Employment	156,994,000	149,613,000	148,383,000	-8,611,000	-5.5%	-1,230,000	-0.8%
Unemployment	6,504,000	10,404,000	10,851,000	4,347,000	66.8%	447,000	4.3%
Unemployment Rate	4.0%	6.5%	6.8%	2.8	percentage points	0.3	percentage points

Seasonally Adjusted

Civilian Labor Force	164,455,000	160,567,000	160,161,000	-4,294,000	-2.6%	-406,000	-0.3%
Labor Force Participation Rate	63.4%	61.5%	61.4%	-2.0	percentage points	0.0	percentage points
Employment	158,659,000	149,830,000	150,031,000	-8,628,000	-5.4%	201,000	0.1%
Unemployment	5,796,000	10,736,000	10,130,000	4,334,000	74.8%	-606,000	-5.6%
Unemployment Rate	3.5%	6.7%	6.3%	2.8	percentage points	-0.4	percentage points

* Error range for Tennessee estimates cannot be computed

** Error range for U.S. estimates is +/- 0.2%

Seasonally Adjusted Nonfarm Employment

(numbers in thousands)

	January 2020	December 2020 rev.	January 2021 pre.	Annual Change		Monthly Change	
				January 2020 to January 2021		December 2020 to January 2021	
				Net Chg.	% chg.	Net Chg.	% chg.
Total Non-Farm	3,151.2	3,030.5	3,028.4	-122.8	-3.9%	-2.1	-0.1%
Mining, Logging, and Construction	136.7	133.2	133.0	-3.7	-2.7%	-0.2	-0.2%
Mining and Logging	4.4	4.2	4.3	-0.1	-2.3%	0.1	2.4%
Construction	132.3	129.0	128.7	-3.6	-2.7%	-0.3	-0.2%
Manufacturing	354.5	343.9	344.5	-10.0	-2.8%	0.6	0.2%
Durable Goods Manufacturing	226.1	218.3	218.9	-7.2	-3.2%	0.6	0.3%
Non-Durable Goods Manufacturing	128.4	125.6	125.6	-2.8	-2.2%	0.0	0.0%
Trade, Transportation, and Utilities	641.7	640.4	642.2	0.5	0.1%	1.8	0.3%
Wholesale Trade	121.6	117.0	117.8	-3.8	-3.1%	0.8	0.7%
Retail Trade	333.5	327.9	329.3	-4.2	-1.3%	1.4	0.4%
Transportation, Warehousing, and Utilities	186.6	195.5	195.1	8.5	4.6%	-0.4	-0.2%
Information	45.7	43.2	43.3	-2.4	-5.3%	0.1	0.2%
Financial Activities	174.7	170.9	171.1	-3.6	-2.1%	0.2	0.1%
Finance and Insurance	132.2	131.7	132.3	0.1	0.1%	0.6	0.5%
Real Estate, Rental, and Leasing	42.5	39.2	38.8	-3.7	-8.7%	-0.4	-1.0%
Professional and Business Services	433.7	427.7	426.3	-7.4	-1.7%	-1.4	-0.3%
Professional, Scientific, and Technical Services	147.8	152.4	151.4	3.6	2.4%	-1.0	-0.7%
Management of Companies and Enterprises	52.4	50.2	50.2	-2.2	-4.2%	0.0	0.0%
Administrative, Support, and Waste Services	233.5	225.1	224.7	-8.8	-3.8%	-0.4	-0.2%
Education and Health Services	448.2	429.4	431.5	-16.7	-3.7%	2.1	0.5%
Educational Services	61.3	55.6	57.2	-4.1	-6.7%	1.6	2.9%
Health Care and Social Assistance	386.9	373.8	374.3	-12.6	-3.3%	0.5	0.1%
Leisure and Hospitality	351.2	294.6	291.5	-59.7	-17.0%	-3.1	-1.1%
Arts, Entertainment, and Recreation	42.7	36.3	35.7	-7.0	-16.4%	-0.6	-1.7%
Accommodation and Food Services	308.5	258.3	255.8	-52.7	-17.1%	-2.5	-1.0%
Other Services	124.2	119.1	118.9	-5.3	-4.3%	-0.2	-0.2%
Government	440.6	428.1	426.1	-14.5	-3.3%	-2.0	-0.5%
Federal Government	50.4	51.5	50.9	0.5	1.0%	-0.6	-1.2%
State Government	98.1	94.8	94.6	-3.5	-3.6%	-0.2	-0.2%
Local Government	292.1	281.8	280.6	-11.5	-3.9%	-1.2	-0.4%

Major Changes in Seasonally Adjusted Nonfarm Employment (in thousands)

I. Monthly Change (from December 2020 rev. to January 2021 pre.)

	December 2020 rev.	January 2021 pre.	Change
A. Major Employment Increases			
Education and Health Services	429.4	431.5	2.1
Trade, Transportation, and Utilities	640.4	642.2	1.8
Manufacturing	343.9	344.5	0.6
B. Major Employment Decreases			
Leisure and Hospitality	294.6	291.5	-3.1
Government	428.1	426.1	-2.0
Professional and Business Services	427.7	426.3	-1.4

II. Yearly Change (from January 2020 to January 2021 pre.)

	January 2020	January 2021 pre.	Change
A. Major Employment Increases			
Transportation, Warehousing, and Utilities	186.6	195.1	8.5
Professional, Scientific, and Technical Services	147.8	151.4	3.6
Federal Government	50.4	50.9	0.5
B. Major Employment Decreases			
Leisure and Hospitality	351.2	291.5	-59.7
Education and Health Services	448.2	431.5	-16.7
Government	440.6	426.1	-14.5

BUSINESS SURVEY - Not Seasonally Adjusted

Estimated Nonfarm Employment by Industry*

(numbers in thousands)	January 2020	December 2020 rev.	January 2021 pre.	Annual Change		Monthly Change	
				January 2020 to January 2021		December 2020 to January 2021	
				Net Chg.	% chg.	Net Chg.	% chg.
Total Non-Farm	3,117.6	3,065.1	3,000.6	-117.0	-3.8%	-64.5	-2.1%
Total Private	2,677.4	2,627.1	2,576.0	-101.4	-3.8%	-51.1	-1.9%
Goods Producing	485.9	478.6	474.9	-11.0	-2.3%	-3.7	-0.8%
Mining, Logging, and Construction	132.4	133.1	130.4	-2.0	-1.5%	-2.7	-2.0%
Manufacturing	353.5	345.5	344.5	-9.0	-2.5%	-1.0	-0.3%
Durable Goods Manufacturing	225.8	219.5	219.5	-6.3	-2.8%	0.0	0.0%
Wood Products	12.9	12.9	12.7	-0.2	-1.6%	-0.2	-1.6%
Non-Metallic Mineral Products	14.2	13.8	13.8	-0.4	-2.8%	0.0	0.0%
Primary Metal Products	11.3	10.6	10.7	-0.6	-5.3%	0.1	0.9%
Fabricated Metal Products	38.0	37.5	37.5	-0.5	-1.3%	0.0	0.0%
Machinery Manufacturing	25.0	24.2	24.0	-1.0	-4.0%	-0.2	-0.8%
Computer and Electronic Products	5.9	6.2	6.2	0.3	5.1%	0.0	0.0%
Electrical Equipment and Appliances	17.4	17.2	17.3	-0.1	-0.6%	0.1	0.6%
Transportation Equipment	74.4	71.3	71.5	-2.9	-3.9%	0.2	0.3%
Furniture and Related Products	9.7	9.6	9.6	-0.1	-1.0%	0.0	0.0%
Miscellaneous Durable Manufacturing	17.0	16.2	16.2	-0.8	-4.7%	0.0	0.0%
Non-Durable Goods Manufacturing	127.7	126.0	125.0	-2.7	-2.1%	-1.0	-0.8%
Food Manufacturing	36.2	36.4	36.0	-0.2	-0.6%	-0.4	-1.1%
Beverage and Tobacco Products	7.6	7.5	7.4	-0.2	-2.6%	-0.1	-1.3%
Paper Manufacturing	12.7	12.4	12.5	-0.2	-1.6%	0.1	0.8%
Printing and Related Support Activities	9.0	7.9	7.8	-1.2	-13.3%	-0.1	-1.3%
Chemical Manufacturing	26.0	25.8	25.6	-0.4	-1.5%	-0.2	-0.8%
Plastics and Rubber Products	24.7	24.2	23.8	-0.9	-3.6%	-0.4	-1.7%
Service Providing	2,631.7	2,586.5	2,525.7	-106.0	-4.0%	-60.8	-2.4%
Private Service Providing (Service Providing Less Government)	2,191.5	2,148.5	2,101.1	-90.4	-4.1%	-47.4	-2.2%
Trade, Transportation, and Utilities	640.3	657.0	642.4	2.1	0.3%	-14.6	-2.2%
Wholesale Trade	121.3	117.6	117.4	-3.9	-3.2%	-0.2	-0.2%
Merchant wholesalers, Durable Goods	71.7	69.7	69.7	-2.0	-2.8%	0.0	0.0%
Merchant wholesalers, Non-Durable Goods	42.5	41.1	40.9	-1.6	-3.8%	-0.2	-0.5%
Wholesale Electronic Markets	7.1	6.8	6.8	-0.3	-4.2%	0.0	0.0%
Retail Trade	331.8	337.5	329.6	-2.2	-0.7%	-7.9	-2.3%
Motor Vehicle and Parts Dealers	46.9	45.8	45.4	-1.5	-3.2%	-0.4	-0.9%
Furniture and Home Furnishings Stores	10.3	9.7	9.4	-0.9	-8.7%	-0.3	-3.1%
Building Material and Garden Supply Stores	29.0	32.0	31.4	2.4	8.3%	-0.6	-1.9%
Food and Beverage Stores	55.2	58.5	57.7	2.5	4.5%	-0.8	-1.4%
Health and Personal Care Stores	23.7	24.1	23.2	-0.5	-2.1%	-0.9	-3.7%
Gasoline Stations	23.8	24.1	23.7	-0.1	-0.4%	-0.4	-1.7%
Clothing and Clothing Accessories Stores	23.2	21.8	19.5	-3.7	-15.9%	-2.3	-10.6%
Sporting Goods, Hobby, Book, and Music Stores	12.0	12.2	11.3	-0.7	-5.8%	-0.9	-7.4%
General Merchandise Stores	71.2	73.4	70.7	-0.5	-0.7%	-2.7	-3.7%
Miscellaneous Store Retailers	17.6	17.0	17.2	-0.4	-2.3%	0.2	1.2%
Non-Store Retailers	8.5	8.3	7.9	-0.6	-7.1%	-0.4	-4.8%
Transportation, Warehousing, and Utilities	187.2	201.9	195.4	8.2	4.4%	-6.5	-3.2%
Utilities	3.6	3.7	3.7	0.1	2.8%	0.0	0.0%
Transportation and Warehousing	183.6	198.2	191.7	8.1	4.4%	-6.5	-3.3%
Information	44.9	43.3	42.8	-2.1	-4.7%	-0.5	-1.2%
Financial Activities	173.7	170.9	170.2	-3.5	-2.0%	-0.7	-0.4%
Finance and Insurance	132.1	131.8	132.1	0.0	0.0%	0.3	0.2%
Real Estate, Rental, and Leasing	41.6	39.1	38.1	-3.5	-8.4%	-1.0	-2.6%
Professional and Business Services	426.3	436.7	421.7	-4.6	-1.1%	-15.0	-3.4%
Professional, Scientific, and Technical Services	147.8	153.8	152.1	4.3	2.9%	-1.7	-1.1%
Management of Companies and Enterprises	51.6	50.5	49.9	-1.7	-3.3%	-0.6	-1.2%
Administrative, Support, and Waste Services	226.9	232.4	219.7	-7.2	-3.2%	-12.7	-5.5%
Education and Health Services	447.0	431.2	428.4	-18.6	-4.2%	-2.8	-0.6%
Educational Services	62.0	56.7	56.0	-6.0	-9.7%	-0.7	-1.2%
Health Care and Social Assistance	385.0	374.5	372.4	-12.6	-3.3%	-2.1	-0.6%
Ambulatory Health Care Services	156.8	156.1	156.1	-0.7	-0.4%	0.0	0.0%
Hospitals	110.0	109.4	109.2	-0.8	-0.7%	-0.2	-0.2%
Nursing and Residential Care Facilities	63.0	57.6	56.5	-6.5	-10.3%	-1.1	-1.9%
Social Assistance	55.2	51.4	50.6	-4.6	-8.3%	-0.8	-1.6%
Leisure and Hospitality	336.8	291.3	279.3	-57.5	-17.1%	-12.0	-4.1%
Arts, Entertainment, and Recreation	37.1	33.6	30.2	-6.9	-18.6%	-3.4	-10.1%

Accommodation and Food Services	299.7	257.7	249.1	-50.6	-16.9%	-8.6	-3.3%
Accommodation	39.0	26.7	25.5	-13.5	-34.6%	-1.2	-4.5%
Food Services and Drinking Places	260.7	231.0	223.6	-37.1	-14.2%	-7.4	-3.2%
Other Services	122.5	118.1	116.3	-6.2	-5.1%	-1.8	-1.5%
Government	440.2	438.0	424.6	-15.6	-3.5%	-13.4	-3.1%
Federal Government	50.4	52.1	50.8	0.4	0.8%	-1.3	-2.5%
State Government	93.1	95.8	89.1	-4.0	-4.3%	-6.7	-7.0%
State Government Educational Services	51.8	54.9	48.3	-3.5	-6.8%	-6.6	-12.0%
State Government Excluding Education	41.3	40.9	40.8	-0.5	-1.2%	-0.1	-0.2%
Local Government	296.7	290.1	284.7	-12.0	-4.0%	-5.4	-1.9%
Local Government Educational Services	147.7	143.4	140.5	-7.2	-4.9%	-2.9	-2.0%
Local Government Excluding Education	149.0	146.7	144.2	-4.8	-3.2%	-2.5	-1.7%

* Estimates include all full- and part-time nonagricultural wage and salary employees who worked during, or received pay for, any part of the pay period which include the 12th of the month. This is a count of jobs by place of work. Agricultural workers, proprietors, self-employed persons, workers in private households, and unpaid family workers are excluded.

Unemployment Rates, 2010-2021

U.S. Tennessee, Seasonally Adjusted & Not Seasonally Adjusted

	2010				2011				2012				2013			
	U.S.		TN		U.S.		TN		U.S.		TN		U.S.		TN	
	Seas. Adj.	Not Seas. Adj.	Seas. Adj.	Not Seas. Adj.	Seas. Adj.	Not Seas. Adj.	Seas. Adj.	Not Seas. Adj.	Seas. Adj.	Not Seas. Adj.	Seas. Adj.	Not Seas. Adj.	Seas. Adj.	Not Seas. Adj.	Seas. Adj.	Not Seas. Adj.
Jan	9.8	10.6	10.5 *	11.1 *	9.1	9.8	9.6 *	10.2 *	8.3	8.8	8.2	8.6	8.0	8.5	8.0 -	8.7 *
Feb	9.8	10.4	10.4 *	10.8 *	9.0	9.5	9.5 *	9.8 *	8.3	8.7	8.1	8.4	7.7	8.1	8.0 *	8.2 *
Mar	9.9	10.2	10.2 *	10.6 *	9.0	9.2	9.4 *	9.5 *	8.2	8.4	8.0	8.1	7.5	7.6	8.0 *	7.9 *
Apr	9.9	9.5	10.0 *	9.7 *	9.1	8.7	9.3 *	8.9 *	8.2	7.7	8.0	7.5	7.6	7.1	8.0 *	7.4 *
May	9.6	9.3	9.8 *	9.4 *	9.0	8.7	9.3 *	8.9 *	8.2	7.9	8.0	7.7	7.5	7.3	7.9 *	7.6 *
Jun	9.4	9.6	9.6 *	9.9 *	9.1	9.3	9.2 *	9.8 *	8.2	8.4	8.0	8.6 *	7.5	7.8	7.9 *	8.5 *
Jul	9.4	9.7	9.5 *	9.7 -	9.0	9.3	9.2 *	9.4 *	8.2	8.6	8.0	8.6 -	7.3	7.7	7.8 *	8.2 *
Aug	9.5	9.5	9.5 -	9.6 *	9.0	9.1	9.1 *	9.2 *	8.1	8.2	7.9	8.0	7.2	7.3	7.7 *	7.7 *
Sep	9.5	9.2	9.5 -	9.3 *	9.0	8.8	8.9	8.9 *	7.8	7.6	7.8 -	7.5	7.2	7.0	7.6 *	7.5 *
Oct	9.4	9.0	9.6	9.2 *	8.8	8.5	8.8 -	8.5 -	7.8	7.5	7.8 -	7.6 *	7.2	7.0	7.4 *	7.5 *
Nov	9.8	9.3	9.7	9.5 *	8.6	8.2	8.6 -	8.1	7.7	7.4	7.8 *	7.3	6.9	6.6	7.3 *	6.9 *
Dec	9.3	9.1	9.6 *	9.4 *	8.5	8.3	8.4	8.1	7.9	7.6	7.9 -	7.7 *	6.7	6.5	7.1 *	6.8 *
Avg		9.6		9.8 *		8.9		9.1 *		8.1		8.0		7.4		7.8 *

	2014				2015				2016				2017			
	U.S.		TN		U.S.		TN		U.S.		TN		U.S.		TN	
	Seas. Adj.	Not Seas. Adj.	Seas. Adj.	Not Seas. Adj.	Seas. Adj.	Not Seas. Adj.	Seas. Adj.	Not Seas. Adj.	Seas. Adj.	Not Seas. Adj.	Seas. Adj.	Not Seas. Adj.	Seas. Adj.	Not Seas. Adj.	Seas. Adj.	Not Seas. Adj.
Jan	6.6	7.0	6.9 *	7.1 *	5.7	6.1	6.1 *	6.6 *	4.8	5.3	4.8 -	5.0	4.7	5.1	4.6	5.0
Feb	6.7	7.0	6.8 *	7.1 *	5.5	5.8	6.1 *	6.2 *	4.9	5.2	4.7	4.8	4.6	4.9	4.4	4.6
Mar	6.7	6.8	6.8 *	6.9 *	5.4	5.6	6.0 *	5.9 *	5.0	5.1	4.7	4.7	4.4	4.6	4.1	4.1
Apr	6.2	5.9	6.7 *	6.0 *	5.4	5.1	5.9 *	5.3 *	5.1	4.7	4.6	4.3	4.5	4.1	3.9	3.4
May	6.3	6.1	6.7 *	6.3 *	5.6	5.3	5.8 *	5.6 *	4.8	4.5	4.7	4.2	4.4	4.1	3.7	3.2
Jun	6.1	6.3	6.7 *	7.1 *	5.3	5.5	5.7 *	6.2 *	4.9	5.1	4.7	5.2 *	4.3	4.5	3.5	4.1
Jul	6.2	6.5	6.6 *	7.3 *	5.2	5.6	5.5 *	6.0 *	4.8	5.1	4.8 -	5.2 *	4.3	4.6	3.5	3.9
Aug	6.1	6.3	6.6 *	6.9 *	5.1	5.2	5.4 *	5.5 *	4.9	5.0	4.8	5.0 -	4.4	4.5	3.4	3.6
Sep	5.9	5.7	6.5 *	6.4 *	5.0	4.9	5.3 *	5.2 *	5.0	4.8	4.9	4.9 *	4.2	4.1	3.4	3.2
Oct	5.7	5.5	6.4 *	6.1 *	5.0	4.8	5.1 *	5.0 *	4.9	4.7	4.9 -	4.7 -	4.1	3.9	3.4	3.2
Nov	5.8	5.5	6.3 *	6.1 *	5.1	4.8	5.0	4.9 *	4.7	4.4	4.8	4.5 *	4.2	3.9	3.5	3.2
Dec	5.6	5.4	6.2 *	5.9 *	5.0	4.8	4.9	4.7	4.7	4.5	4.7 -	4.5 -	4.1	3.9	3.5	3.2
Avg		6.2		6.6 *		5.3		5.6 *		4.9		4.7		4.4		3.7

	2018				2019				2020				2021			
	U.S.		TN		U.S.		TN		U.S.		TN		U.S.		TN	
	Seas. Adj.	Not Seas. Adj.	Seas. Adj.	Not Seas. Adj.	Seas. Adj.	Not Seas. Adj.	Seas. Adj.	Not Seas. Adj.	Seas. Adj.	Not Seas. Adj.	Seas. Adj.	Not Seas. Adj.	Seas. Adj.	Not Seas. Adj.	Seas. Adj.	Not Seas. Adj.
Jan	4.0	4.5	3.5	3.9	4.0	4.4	3.4	3.9	3.5	4.0	3.7 *	4.0 -	6.3	6.8	5.1	5.4
Feb	4.1	4.4	3.5	3.7	3.8	4.1	3.4	3.5	3.5	3.8	3.9 *	3.8 -				
Mar	4.0	4.1	3.5	3.5	3.8	3.9	3.3	3.4	4.4	4.5	4.0	4.3				
Apr	4.0	3.7	3.4	3.0	3.7	3.3	3.3	2.9	14.8	14.4	15.8 *	15.6 *				
May	3.8	3.6	3.5	3.1	3.7	3.4	3.3	3.1	13.3	13.0	9.6	9.8				
Jun	4.0	4.2	3.5	4.1	3.6	3.8	3.3	3.8 -	11.1	11.2	9.3	9.9				
Jul	3.8	4.1	3.5	4.0	3.6	4.0	3.3	3.8	10.2	10.5	8.9	9.4				
Aug	3.8	3.9	3.5	3.7	3.7	3.8	3.3	3.4	8.4	8.5	8.1	7.8				
Sep	3.7	3.6	3.5	3.4	3.5	3.3	3.4	3.1	7.8	7.7	7.9 *	7.6				
Oct	3.8	3.5	3.5	3.3	3.6	3.3	3.4	3.3 -	6.9	6.6	7.8 *	7.4 *				
Nov	3.8	3.5	3.5	3.1	3.6	3.3	3.5	3.2	6.7	6.4	5.6	5.1				
Dec	3.9	3.7	3.4	3.1	3.6	3.4	3.6 -	3.3	6.7	6.5	5.6	5.6				
Avg		3.9		3.5		3.7		3.4		8.1		7.5				

* Designates when Tennessee's unemployment rate is greater than the U.S. rate
 - Designates when Tennessee's unemployment rate is equal to the U.S. rate

HOURS AND EARNINGS OF PRODUCTION WORKERS

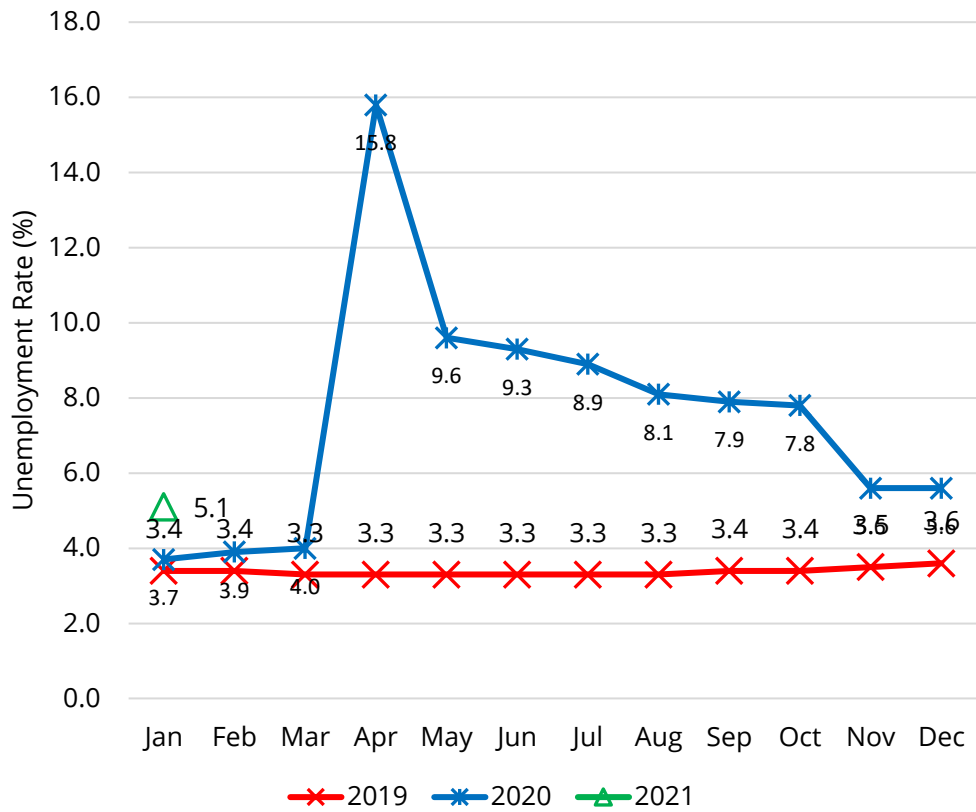
	Average Weekly Earning			Average Weekly Hours			Average Hourly Earning		
	January 2020	December 2020	January 2021	January 2020	December 2020	January 2021	January 2020	December 2020	January 2021
Manufacturing	\$824.14	\$910.79	\$875.68	40.3	42.7	41.6	\$20.45	\$21.33	\$21.05
Durable Goods	\$858.62	\$968.07	\$925.87	41.6	42.2	41.5	\$20.64	\$22.94	\$22.31
Non-Durable Goods	\$765.43	\$816.75	\$790.02	38.1	43.7	41.8	\$20.09	\$18.69	\$18.90

HOURS AND EARNINGS OF PRODUCTION WORKERS - ALL MANUFACTURING

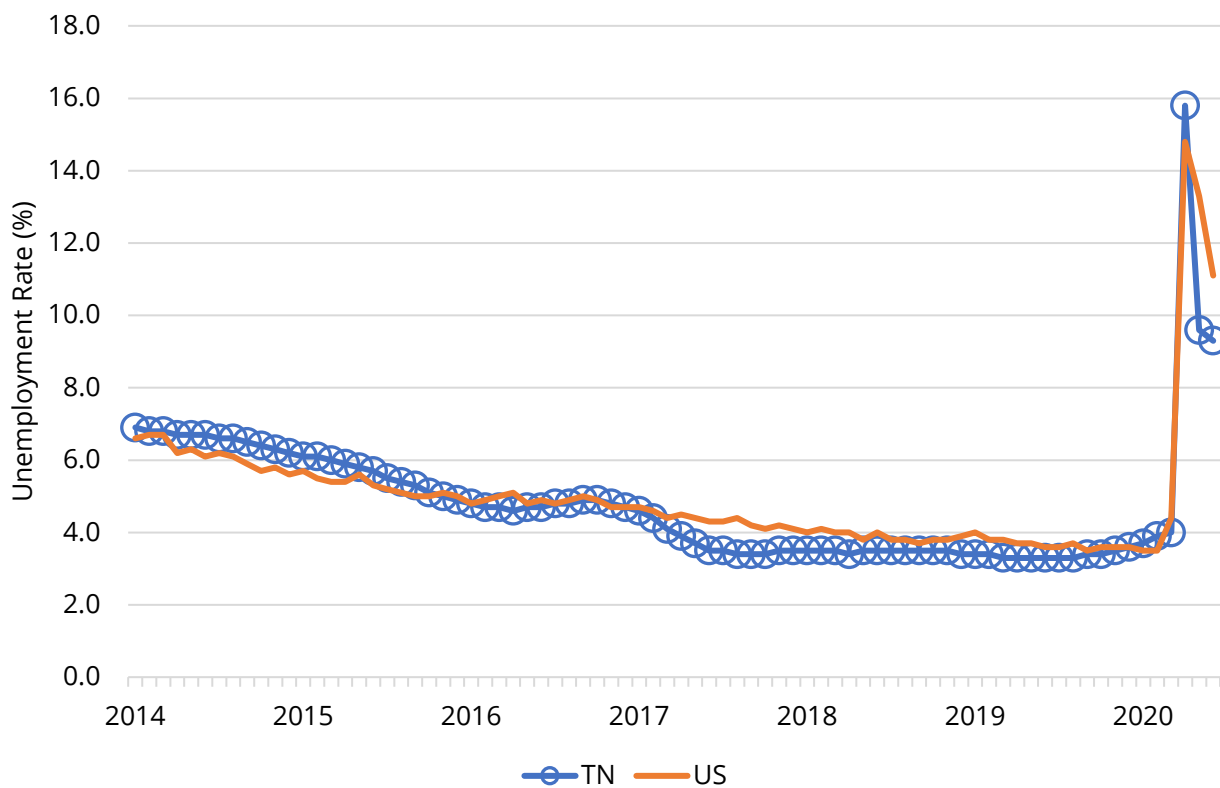
(ranked December 2020 preliminary average weekly earnings; January 2021 will be available later this month)

	Average Weekly Earning			Average Weekly Hours			Average Hourly Earning		
	December 2019	December 2020	Percent Change	December 2019	December 2020	Percent Change	December 2019	December 2020	Percent Change
FLORIDA	\$1020.78	\$1004.70	-1.6%	42.80	42.70	-0.2%	\$23.85	\$23.53	-1.3%
KENTUCKY	\$922.32	\$994.16	7.8%	42.70	43.00	0.7%	\$21.60	\$23.12	7.0%
SOUTH CAROLINA	\$890.84	\$969.43	8.8%	42.20	42.50	0.7%	\$21.11	\$22.81	8.1%
MISSISSIPPI	\$887.44	\$840.80	-5.3%	41.90	39.40	-6.0%	\$21.18	\$21.34	0.8%
GEORGIA	\$866.59	\$923.90	6.6%	43.20	42.40	-1.9%	\$20.06	\$21.79	8.6%
TENNESSEE	\$864.61	\$906.49	4.8%	42.30	42.30	0.0%	\$20.44	\$21.43	4.8%
ALABAMA	\$864.00	\$905.32	4.8%	43.20	43.40	0.5%	\$20.00	\$20.86	4.3%
NORTH CAROLINA	\$785.82	\$843.03	7.3%	41.60	43.50	4.6%	\$18.89	\$19.38	2.6%
ARKANSAS	\$776.47	\$777.94	0.2%	41.50	40.10	-3.4%	\$18.71	\$19.40	3.7%
VIRGINIA	\$770.58	\$877.40	13.9%	39.70	41.00	3.3%	\$19.41	\$21.40	10.3%

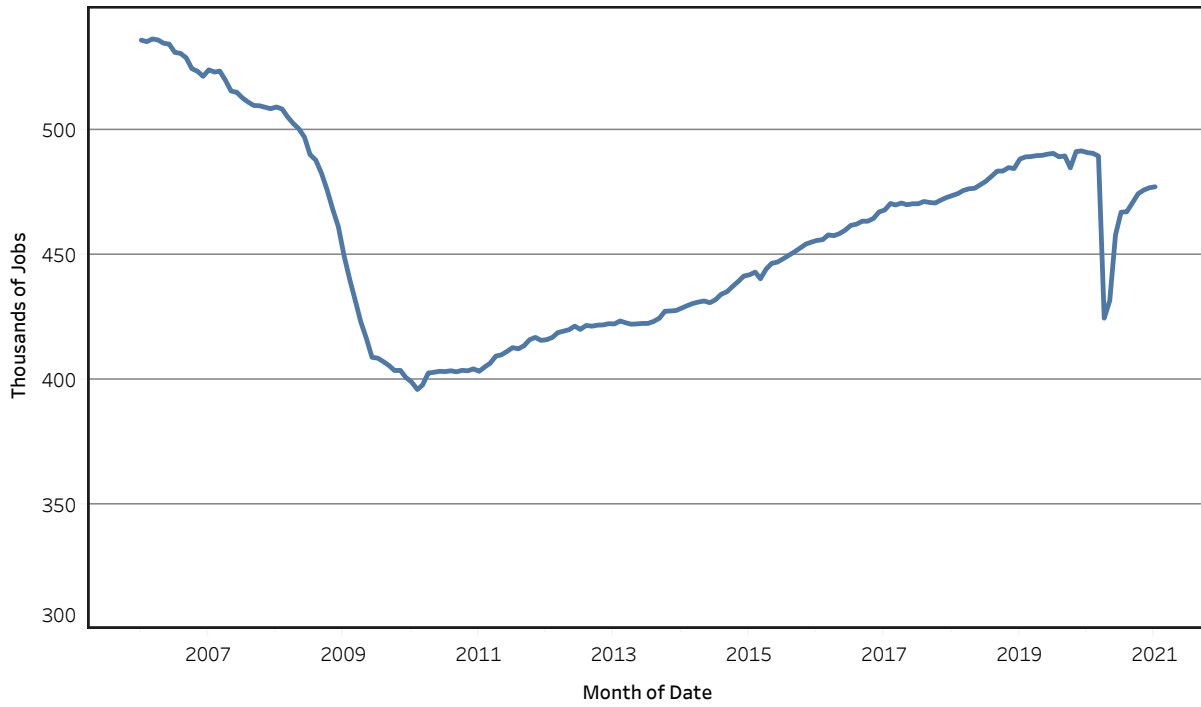
Unemployment Rates - Tennessee Seasonally Adjusted - 2019 to 2021



Unemployment Rates - US & Tennessee Seasonally Adjusted - January 2014 to January 2021



Goods - Producing Jobs in Tennessee Seasonally Adjusted - Jan 2006 to Jan 2021



Service - Providing Jobs in Tennessee Seasonally Adjusted - Jan 2006 to Jan 2021

