

TENNESSEE ECONOMIC ANALYSIS

April 2023

NOT TO BE RELEASED BEFORE:

TIME: 1:30 PM CT

DAY: Thursday, May 18, 2023

Prepared by:

Tennessee Department of Labor and Workforce Development

Workforce Insights, Research and Reporting Engine Division

Table of Contents

Economic Indicators

	<u>Page</u>
Briefing Packet Summary	1
Labor Force Estimates Summary - Household Survey	2
Seasonally Adjusted Nonfarm Employment	3
Major Changes in Seasonally Adjusted Nonfarm Employment	3
Business Survey - Not Seasonally Adjusted	4-5

Appendix

Unemployment Rates, 2012 - 2023	6
Hours and Earnings of Production Workers	7

Graphs

Tennessee Unemployment Rates	8
Unemployment Rates - U.S. and Tennessee	8
Goods - Producing Jobs in Tennessee	9
Service - Providing Jobs in Tennessee	9

BRIEFING PACKET SUMMARY

April 2023 pre.

Unemployment Rates

Tennessee	April 2022	March 2023 rev.	April 2023 pre.	Change From:	
				Year Ago	Month Ago
Not Seasonally Adjusted	3.1%	3.1%	2.6%	-0.5%	-0.5%
Seasonally Adjusted	3.3%	3.4%	3.3%	0.0%	-0.1%

United States

Not Seasonally Adjusted	3.3%	3.6%	3.1%	-0.2%	-0.5%
Seasonally Adjusted	3.6%	3.5%	3.4%	-0.2%	-0.1%

Hours and Earnings of Production Workers (Manufacturing)

Tennessee	March 2023 rev.	April 2023 pre.	Change
Average Weekly Earnings	\$961.79	\$959.71	-\$2.08
Average Weekly Hours	41.6	40.7	-0.9
Average Hourly Earnings	\$23.12	\$23.58	\$0.46

United States

Average Weekly Earnings	\$1052.76	\$1062.50	\$9.74
Average Weekly Hours	40.6	40.6	0.0
Average Hourly Earnings	\$25.93	\$26.17	\$0.24

Summary

Tennessee's April seasonally adjusted unemployment rate decreased to 3.3% from March's 3.4%.

Over the past year Tennessee's seasonally adjusted unemployment rate remained the same at 3.3%

Over the year, nonfarm employment increased by 90,000 jobs. The largest increases were in Leisure & Hospitality, Education & Health Services, and Government.

Over the month, total nonfarm employment increased by 2,000 jobs. The largest increases were in Education & Health Services, Government, and Manufacturing

LABOR FORCE ESTIMATES SUMMARY
HOUSEHOLD SURVEY

Tennessee* Not Seasonally Adjusted	April 2022	Revised March 2023	Preliminary April 2023	Change from April 2022 to April 2023		Change from March 2023 to April 2023	
Civilian Labor Force	3,379,677	3,364,796	3,355,769	-23,908	-0.7%	-9,027	-0.3%
Labor Force Participation Rate	60.6%	59.5%	59.2%	-1.4	percentage points	-0.3	percentage points
Employment	3,275,834	3,259,561	3,268,622	-7,212	-0.2%	9,061	0.3%
Unemployment	103,843	105,235	87,147	-16,696	-16.1%	-18,088	-17.2%
Unemployment Rate	3.1%	3.1%	2.6%	-0.5	percentage points	-0.5	percentage points

Seasonally Adjusted

Civilian Labor Force	3,384,499	3,338,255	3,347,566	-36,933	-1.1%	9,311	0.3%
Labor Force Participation Rate	60.7%	59.0%	59.1%	-1.6	percentage points	0.1	percentage points
Employment	3,273,420	3,224,389	3,237,379	-36,041	-1.1%	12,990	0.4%
Unemployment	111,079	113,866	110,187	-892	-0.8%	-3,679	-3.2%
Unemployment Rate	3.3%	3.4%	3.3%	0.0	percentage points	-0.1	percentage points

United States** Not Seasonally Adjusted	April 2022	Revised March 2023	Preliminary April 2023	Change from April 2022 to April 2023		Change from March 2023 to April 2023	
Civilian Labor Force	163,449,000	166,783,000	166,221,000	2,772,000	1.7%	-562,000	-0.3%
Labor Force Participation Rate	62.0%	62.6%	62.4%	0.4	percentage points	-0.2	percentage points
Employment	157,991,000	160,741,000	161,075,000	3,084,000	2.0%	334,000	0.2%
Unemployment	5,458,000	6,043,000	5,146,000	-312,000	-5.7%	-897,000	-14.8%
Unemployment Rate	3.3%	3.6%	3.1%	-0.2	percentage points	-0.5	percentage points

Seasonally Adjusted

Civilian Labor Force	163,950,000	166,731,000	166,688,000	2,738,000	1.7%	-43,000	0.0%
Labor Force Participation Rate	62.2%	62.6%	62.6%	0.4	percentage points	0.0	percentage points
Employment	157,982,000	160,892,000	161,031,000	3,049,000	1.9%	139,000	0.1%
Unemployment	5,968,000	5,839,000	5,657,000	-311,000	-5.2%	-182,000	-3.1%
Unemployment Rate	3.6%	3.5%	3.4%	-0.2	percentage points	-0.1	percentage points

* Error range for Tennessee estimates cannot be computed

** Error range for U.S. estimates is +/- 0.2%

Seasonally Adjusted Nonfarm Employment

(numbers in thousands)

	April 2022	March 2023 rev.	April 2023 pre.	Annual Change		Monthly Change	
				April 2022 to April 2023		March 2023 to April 2023	
				Net Chg.	% chg.	Net Chg.	% chg.
Total Non-Farm	3,222.8	3,310.8	3,312.8	90.0	2.8%	2.0	0.1%
Mining, Logging and Construction	148.6	155.8	155.9	7.3	4.9%	0.1	0.1%
Mining and Logging	4.4	4.5	4.4	0.0	0.0%	-0.1	-2.2%
Construction	144.2	151.3	151.5	7.3	5.1%	0.2	0.1%
Manufacturing	362.2	368.6	369.6	7.4	2.0%	1.0	0.3%
Durable Goods Manufacturing	230.4	236.0	237.6	7.2	3.1%	1.6	0.7%
Non-Durable Goods Manufacturing	131.8	132.6	132.0	0.2	0.2%	-0.6	-0.5%
Trade, Transportation, and Utilities	675.9	684.7	683.0	7.1	1.1%	-1.7	-0.2%
Wholesale Trade	128.1	135.4	135.5	7.4	5.8%	0.1	0.1%
Retail Trade	340.6	340.8	341.5	0.9	0.3%	0.7	0.2%
Transportation, Warehousing, and Utilities	207.2	208.5	206.0	-1.2	-0.6%	-2.5	-1.2%
Information	53.6	56.1	55.5	1.9	3.5%	-0.6	-1.1%
Financial Activities	174.6	173.7	174.3	-0.3	-0.2%	0.6	0.3%
Finance and Insurance	132.5	131.1	131.2	-1.3	-1.0%	0.1	0.1%
Real Estate, Rental, and Leasing	42.1	42.6	43.1	1.0	2.4%	0.5	1.2%
Professional and Business Services	463.5	472.4	472.5	9.0	1.9%	0.1	0.0%
Professional, Scientific, and Technical Services	167.0	177.8	178.4	11.4	6.8%	0.6	0.3%
Management of Companies and Enterprises	53.8	54.7	54.6	0.8	1.5%	-0.1	-0.2%
Administrative, Support, and Waste Services	242.7	239.9	239.5	-3.2	-1.3%	-0.4	-0.2%
Education and Health Services	447.1	463.0	465.7	18.6	4.2%	2.7	0.6%
Educational Services	63.4	65.6	66.3	2.9	4.6%	0.7	1.1%
Health Care and Social Assistance	383.7	397.4	399.4	15.7	4.1%	2.0	0.5%
Leisure and Hospitality	339.3	362.2	360.7	21.4	6.3%	-1.5	-0.4%
Arts, Entertainment, and Recreation	42.5	45.4	45.7	3.2	7.5%	0.3	0.7%
Accommodation and Food Services	296.8	316.8	315.0	18.2	6.1%	-1.8	-0.6%
Other Services	125.0	128.9	128.8	3.8	3.0%	-0.1	-0.1%
Government	433.0	445.4	446.8	13.8	3.2%	1.4	0.3%
Federal Government	52.0	54.4	54.5	2.5	4.8%	0.1	0.2%
State Government	94.4	95.3	95.5	1.1	1.2%	0.2	0.2%
Local Government	286.6	295.7	296.8	10.2	3.6%	1.1	0.4%

Major Changes in Seasonally Adjusted Nonfarm Employment (in thousands)

I. Monthly Change (from March 2023 rev. to April 2023 pre.)

	March 2023 rev.	April 2023 pre.	Change
A. Major Employment Increases			
Education and Health Services	463.0	465.7	2.7
Government	445.4	446.8	1.4
Manufacturing	368.6	369.6	1.0
B. Major Employment Decreases			
Transportation, Warehousing, and Utilities	208.5	206.0	-2.5
Accommodation and Food Services	316.8	315.0	-1.8
Non-Durable Goods Manufacturing	132.6	132.0	-0.6

II. Yearly Change (from April 2022 to April 2023 pre.)

	April 2022	April 2023 pre.	Change
A. Major Employment Increases			
Leisure and Hospitality	339.3	360.7	21.4
Education and Health Services	447.1	465.7	18.6
Government	433.0	446.8	13.8
B. Major Employment Decreases			
Administrative, Support, and Waste Services	242.7	239.5	-3.2
Finance and Insurance	132.5	131.2	-1.3
Transportation, Warehousing, and Utilities	207.2	206.0	-1.2

BUSINESS SURVEY - Not Seasonally Adjusted

Estimated Nonfarm Employment by Industry*

(numbers in thousands)	April 2022	March 2023 rev.	April 2023 pre.	Annual Change		Monthly Change	
				April 2022 to April 2023		March 2023 to April 2023	
				Net Chg.	% chg.	Net Chg.	% chg.
Total Non-Farm	3,230.6	3,299.5	3,310.9	80.3	2.5%	11.4	0.3%
Total Private	2,787.2	2,847.4	2,856.3	69.1	2.5%	8.9	0.3%
Goods Producing	510.7	523.6	525.3	14.6	2.9%	1.7	0.3%
Mining, Logging and Construction	148.2	154.2	155.8	7.6	5.1%	1.6	1.0%
Manufacturing	362.5	369.4	369.5	7.0	1.9%	0.1	0.0%
Durable Goods Manufacturing	230.9	236.3	237.4	6.5	2.8%	1.1	0.5%
Wood Products	14.0	14.1	14.1	0.1	0.7%	0.0	0.0%
Non-Metallic Mineral Products	14.7	15.2	15.2	0.5	3.4%	0.0	0.0%
Primary Metal Products	11.2	11.0	11.1	-0.1	-0.9%	0.1	0.9%
Fabricated Metal Products	41.0	41.8	41.9	0.9	2.2%	0.1	0.2%
Machinery Manufacturing	24.7	24.7	24.7	0.0	0.0%	0.0	0.0%
Computer and Electronic Products	6.6	6.9	7.0	0.4	6.1%	0.1	1.4%
Electrical Equipment and Appliances	19.3	18.7	18.7	-0.6	-3.1%	0.0	0.0%
Transportation Equipment	72.4	77.2	77.9	5.5	7.6%	0.7	0.9%
Furniture and Related Products	9.7	9.4	9.4	-0.3	-3.1%	0.0	0.0%
Miscellaneous Durable Manufacturing	17.3	17.3	17.4	0.1	0.6%	0.1	0.6%
Non-Durable Goods Manufacturing	131.6	133.1	132.1	0.5	0.4%	-1.0	-0.8%
Food Manufacturing	38.9	40.3	40.2	1.3	3.3%	-0.1	-0.2%
Beverage and Tobacco Products	9.1	9.3	9.2	0.1	1.1%	-0.1	-1.1%
Paper Manufacturing	13.4	13.4	13.3	-0.1	-0.7%	-0.1	-0.7%
Printing and Related Support Activities	8.1	8.3	8.3	0.2	2.5%	0.0	0.0%
Chemical Manufacturing	26.5	26.8	26.7	0.2	0.8%	-0.1	-0.4%
Plastics and Rubber Products	25.5	25.0	24.7	-0.8	-3.1%	-0.3	-1.2%
Service Providing	2,719.9	2,775.9	2,785.6	65.7	2.4%	9.7	0.3%
Private Service Providing (Service Providing Less Government)	2,276.5	2,323.8	2,331.0	54.5	2.4%	7.2	0.3%
Trade, Transportation, and Utilities	671.6	681.3	678.0	6.4	1.0%	-3.3	-0.5%
Wholesale Trade	128.5	135.4	135.1	6.6	5.1%	-0.3	-0.2%
Merchant wholesalers, Durable Goods	75.8	80.5	80.1	4.3	5.7%	-0.4	-0.5%
Merchant wholesalers, Non-Durable Goods	45.1	46.9	47.1	2.0	4.4%	0.2	0.4%
Wholesale Electronic Markets	7.6	8.0	7.9	0.3	3.9%	-0.1	-1.3%
Retail Trade	339.4	339.1	339.7	0.3	0.1%	0.6	0.2%
Motor Vehicle and Parts Dealers	47.7	47.7	47.4	-0.3	-0.6%	-0.3	-0.6%
Furniture and Home Furnishings Stores	10.2	19.1	19.0	8.8	86.3%	-0.1	-0.5%
Building Material and Garden Supply Stores	34.7	33.4	33.8	-0.9	-2.6%	0.4	1.2%
Food and Beverage Stores	58.8	60.1	60.0	1.2	2.0%	-0.1	-0.2%
Health and Personal Care Stores	26.2	25.1	25.0	-1.2	-4.6%	-0.1	-0.4%
Gasoline Stations	24.3	26.1	26.3	2.0	8.2%	0.2	0.8%
Clothing and Clothing Accessories Stores	21.2	22.9	22.8	1.6	7.5%	-0.1	-0.4%
Sporting Goods, Hobby, Book, and Music Stores	30.1	30.2	30.7	0.6	2.0%	0.5	1.7%
General Merchandise Stores	75.0	74.5	74.7	-0.3	-0.4%	0.2	0.3%
Transportation, Warehousing, and Utilities	203.7	206.8	203.2	-0.5	-0.2%	-3.6	-1.7%
Utilities	4.1	4.2	4.2	0.1	2.4%	0.0	0.0%
Transportation and Warehousing	199.6	202.6	199.0	-0.6	-0.3%	-3.6	-1.8%
Information	53.5	56.1	54.9	1.4	2.6%	-1.2	-2.1%
Financial Activities	174.3	172.6	173.5	-0.8	-0.5%	0.9	0.5%
Finance and Insurance	132.4	130.6	130.6	-1.8	-1.4%	0.0	0.0%
Real Estate, Rental, and Leasing	41.9	42.0	42.9	1.0	2.4%	0.9	2.1%
Professional and Business Services	462.4	467.6	470.2	7.8	1.7%	2.6	0.6%
Professional, Scientific, and Technical Services	167.6	179.1	179.6	12.0	7.2%	0.5	0.3%
Management of Companies and Enterprises	53.7	54.4	54.3	0.6	1.1%	-0.1	-0.2%
Administrative, Support, and Waste Services	241.1	234.1	236.3	-4.8	-2.0%	2.2	0.9%
Education and Health Services	448.7	463.9	467.5	18.8	4.2%	3.6	0.8%
Educational Services	65.5	67.2	68.2	2.7	4.1%	1.0	1.5%
Health Care and Social Assistance	383.2	396.7	399.3	16.1	4.2%	2.6	0.7%
Ambulatory Health Care Services	165.1	171.8	172.0	6.9	4.2%	0.2	0.1%
Hospitals	110.4	114.2	115.0	4.6	4.2%	0.8	0.7%
Nursing and Residential Care Facilities	55.6	57.5	58.4	2.8	5.0%	0.9	1.6%
Social Assistance	52.1	53.2	53.9	1.8	3.5%	0.7	1.3%
Leisure and Hospitality	340.9	354.1	357.8	16.9	5.0%	3.7	1.0%
Arts, Entertainment, and Recreation	42.7	42.3	44.1	1.4	3.3%	1.8	4.3%
Accommodation and Food Services	298.2	311.8	313.7	15.5	5.2%	1.9	0.6%
Accommodation	36.1	38.1	38.7	2.6	7.2%	0.6	1.6%
Food Services and Drinking Places	262.1	273.7	275.0	12.9	4.9%	1.3	0.5%

Other Services	125.1	128.2	129.1	4.0	3.2%	0.9	0.7%
Government	443.4	452.1	454.6	11.2	2.5%	2.5	0.6%
Federal Government	51.9	54.4	54.5	2.6	5.0%	0.1	0.2%
State Government	98.4	98.7	98.9	0.5	0.5%	0.2	0.2%
State Government Educational Services	58.7	58.3	58.3	-0.4	-0.7%	0.0	0.0%
State Government Excluding Education	39.7	40.4	40.6	0.9	2.3%	0.2	0.5%
Local Government	293.1	299.0	301.2	8.1	2.8%	2.2	0.7%
Local Government Educational Services	147.9	150.1	150.8	2.9	2.0%	0.7	0.5%
Local Government Excluding Education	145.2	148.9	150.4	5.2	3.6%	1.5	1.0%

* Estimates include all full- and part-time nonagricultural wage and salary employees who worked during, or received pay for, any part of the pay period which include the 12th of the month. This is a count of jobs by place of work. Agricultural workers, proprietors, self-employed persons, workers in private households, and unpaid family workers are excluded.

Unemployment Rates, 2012-2023

U.S. & Tennessee, Seasonally Adjusted & Not Seasonally Adjusted

	2012				2013				2014				2015			
	U.S.		TN		U.S.		TN		U.S.		TN		U.S.		TN	
	Seas. Adj.	Not Seas. Adj.	Seas. Adj.	Not Seas. Adj.	Seas. Adj.	Not Seas. Adj.	Seas. Adj.	Not Seas. Adj.	Seas. Adj.	Not Seas. Adj.	Seas. Adj.	Not Seas. Adj.	Seas. Adj.	Not Seas. Adj.	Seas. Adj.	Not Seas. Adj.
Jan	8.3	8.8	8.2	8.6	8.0	8.5	8.0 -	8.7 *	6.6	7.0	6.9 *	7.1 *	5.7	6.1	6.1 *	6.6 *
Feb	8.3	8.7	8.1	8.4	7.7	8.1	8.0 *	8.2 *	6.7	7.0	6.8 *	7.1 *	5.5	5.8	6.1 *	6.2 *
Mar	8.2	8.4	8.0	8.1	7.5	7.6	8.0 *	7.9 *	6.7	6.8	6.8 *	6.9 *	5.4	5.6	6.0 *	5.9 *
Apr	8.2	7.7	8.0	7.5	7.6	7.1	8.0 *	7.4 *	6.2	5.9	6.7 *	6.0 *	5.4	5.1	5.9 *	5.3 *
May	8.2	7.9	8.0	7.7	7.5	7.3	7.9 *	7.6 *	6.3	6.1	6.7 *	6.3 *	5.6	5.3	5.8 *	5.6 *
Jun	8.2	8.4	8.0	8.6 *	7.5	7.8	7.9 *	8.5 *	6.1	6.3	6.7 *	7.1 *	5.3	5.5	5.7 *	6.2 *
Jul	8.2	8.6	8.0	8.6 -	7.3	7.7	7.8 *	8.2 *	6.2	6.5	6.6 *	7.3 *	5.2	5.6	5.5 *	6.0 *
Aug	8.1	8.2	7.9	8.0	7.2	7.3	7.7 *	7.7 *	6.1	6.3	6.6 *	6.9 *	5.1	5.2	5.4 *	5.5 *
Sep	7.8	7.6	7.8 -	7.5	7.2	7.0	7.6 *	7.5 *	5.9	5.7	6.5 *	6.4 *	5.0	4.9	5.3 *	5.2 *
Oct	7.8	7.5	7.8 -	7.6 *	7.2	7.0	7.4 *	7.5 *	5.7	5.5	6.4 *	6.1 *	5.0	4.8	5.1 *	5.0 *
Nov	7.7	7.4	7.8 *	7.3	6.9	6.6	7.3 *	6.9 *	5.8	5.5	6.3 *	6.1 *	5.1	4.8	5.0	4.9 *
Dec	7.9	7.6	7.9 -	7.7 *	6.7	6.5	7.1 *	6.8 *	5.6	5.4	6.2 *	5.9 *	5.0	4.8	4.9	4.7
Avg	8.1		8.0		7.4		7.8 *		6.2		6.6 *		5.3		5.6 *	

	2016				2017				2018				2019			
	U.S.		TN		U.S.		TN		U.S.		TN		U.S.		TN	
	Seas. Adj.	Not Seas. Adj.	Seas. Adj.	Not Seas. Adj.	Seas. Adj.	Not Seas. Adj.	Seas. Adj.	Not Seas. Adj.	Seas. Adj.	Not Seas. Adj.	Seas. Adj.	Not Seas. Adj.	Seas. Adj.	Not Seas. Adj.	Seas. Adj.	Not Seas. Adj.
Jan	4.8	5.3	4.8 -	5.0	4.7	5.1	4.6	5.0	4.0	4.5	3.5	3.8	4.0	4.4	3.5	3.8
Feb	4.9	5.2	4.7	4.8	4.6	4.9	4.4	4.6	4.1	4.4	3.5	3.6	3.8	4.1	3.4	3.4
Mar	5.0	5.1	4.7	4.7	4.4	4.6	4.2	4.1	4.0	4.1	3.5	3.5	3.8	3.9	3.4	3.5
Apr	5.1	4.7	4.6	4.3	4.4	4.1	3.9	3.4	4.0	3.7	3.5	3.1	3.6	3.3	3.3	2.9
May	4.8	4.5	4.7	4.2	4.4	4.1	3.7	3.2	3.8	3.6	3.5	3.1	3.7	3.4	3.3	3.1
Jun	4.9	5.1	4.7	5.2 *	4.3	4.5	3.6	4.1	4.0	4.2	3.5	4.1	3.6	3.8	3.2	3.8 -
Jul	4.8	5.1	4.8 -	5.2 *	4.3	4.6	3.5	3.9	3.8	4.1	3.5	3.9	3.7	4.0	3.2	3.7
Aug	4.9	5.0	4.8	5.0 -	4.4	4.5	3.4	3.6	3.8	3.9	3.5	3.6	3.7	3.8	3.2	3.3
Sep	5.0	4.8	4.9	4.9 *	4.3	4.1	3.4	3.2	3.7	3.6	3.5	3.4	3.5	3.3	3.3	3.1
Oct	4.9	4.7	4.9 -	4.7 -	4.2	3.9	3.4	3.3	3.8	3.5	3.5	3.4	3.6	3.3	3.4	3.3 -
Nov	4.7	4.4	4.8	4.5 *	4.2	3.9	3.4	3.2	3.8	3.5	3.5	3.1	3.6	3.3	3.4	3.1
Dec	4.7	4.5	4.7 -	4.5 -	4.1	3.9	3.5	3.2	3.9	3.7	3.5	3.2	3.6	3.4	3.5	3.3
Avg	4.9		4.7		4.4		3.7		3.9		3.5		3.7		3.3	

	2020				2021				2022				2023			
	U.S.		TN		U.S.		TN		U.S.		TN		U.S.		TN	
	Seas. Adj.	Not Seas. Adj.	Seas. Adj.	Not Seas. Adj.	Seas. Adj.	Not Seas. Adj.	Seas. Adj.	Not Seas. Adj.	Seas. Adj.	Not Seas. Adj.	Seas. Adj.	Not Seas. Adj.	Seas. Adj.	Not Seas. Adj.	Seas. Adj.	Not Seas. Adj.
Jan	3.5	4.0	3.5 -	3.7	6.3	6.8	5.4	5.6	4.0	4.4	3.5	3.7	3.4	3.9	3.5 *	3.5
Feb	3.5	3.8	3.5 -	3.4	6.2	6.6	5.3	5.3	3.8	4.1	3.4	3.5	3.6	3.9	3.5	3.6
Mar	4.4	4.5	3.5	3.9	6.1	6.2	5.1	5.2	3.6	3.8	3.3	3.2	3.5	3.6	3.4	3.1
Apr	14.7	14.4	15.8 *	15.0 *	6.1	5.7	5.0	4.7	3.6	3.3	3.3	3.1	3.4	3.1	3.3	2.6
May	13.2	13.0	12.1	11.8	5.8	5.5	4.8	4.6	3.6	3.4	3.2	3.2				
Jun	11.0	11.2	10.1	10.8	5.9	6.1	4.6	5.6	3.6	3.8	3.2	4.0 *				
Jul	10.2	10.5	9.0	10.1	5.4	5.7	4.4	4.9	3.5	3.8	3.3	3.7				
Aug	8.4	8.5	7.7	7.8	5.2	5.3	4.2	4.4	3.7	3.8	3.3	3.6				
Sep	7.9	7.7	7.1	6.9	4.8	4.6	4.0	3.8	3.5	3.3	3.4	3.2				
Oct	6.9	6.6	6.4	6.0	4.5	4.3	3.8	3.5	3.7	3.4	3.5	3.4 -				
Nov	6.7	6.4	6.0	5.4	4.2	3.9	3.7	3.2	3.6	3.4	3.5	3.2				
Dec	6.7	6.5	5.7	5.4	3.9	3.7	3.6	3.1	3.5	3.3	3.5 -	2.9				
Avg	8.1		7.5		5.3		4.5		3.6		3.4					

* Designates when Tennessee's unemployment rate is greater than the U.S. rate

- Designates when Tennessee's unemployment rate is equal to the U.S. rate

HOURS AND EARNINGS OF PRODUCTION WORKERS

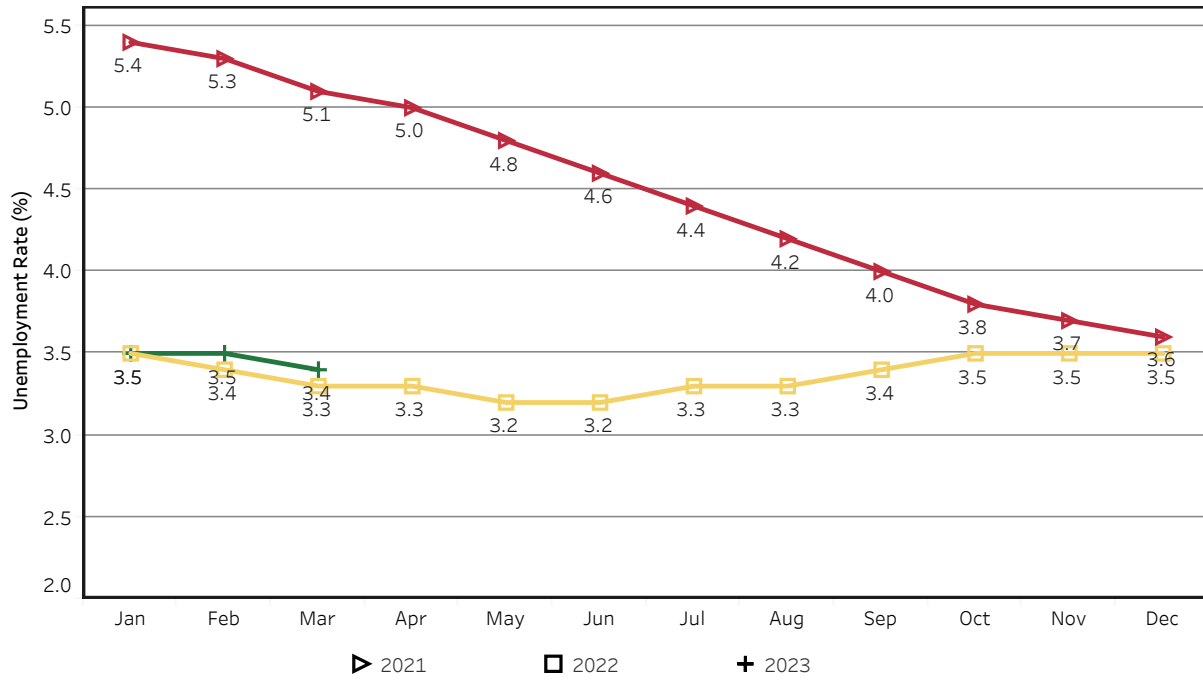
	Average Weekly Earning			Average Weekly Hours			Average Hourly Earning		
	April 2022	March 2023	April 2023	April 2022	March 2023	April 2023	April 2022	March 2023	April 2023
Manufacturing	\$958.18	\$961.79	\$959.71	43.2	41.6	40.7	\$22.18	\$23.12	\$23.58
Durable Goods	1002.51	1018.30	1003.66	43.1	42.5	41.1	23.26	23.96	24.42
Non-Durable Goods	884.06	865.76	882.80	43.4	40.1	40.0	20.37	21.59	22.07

HOURS AND EARNINGS OF PRODUCTION WORKERS - ALL MANUFACTURING

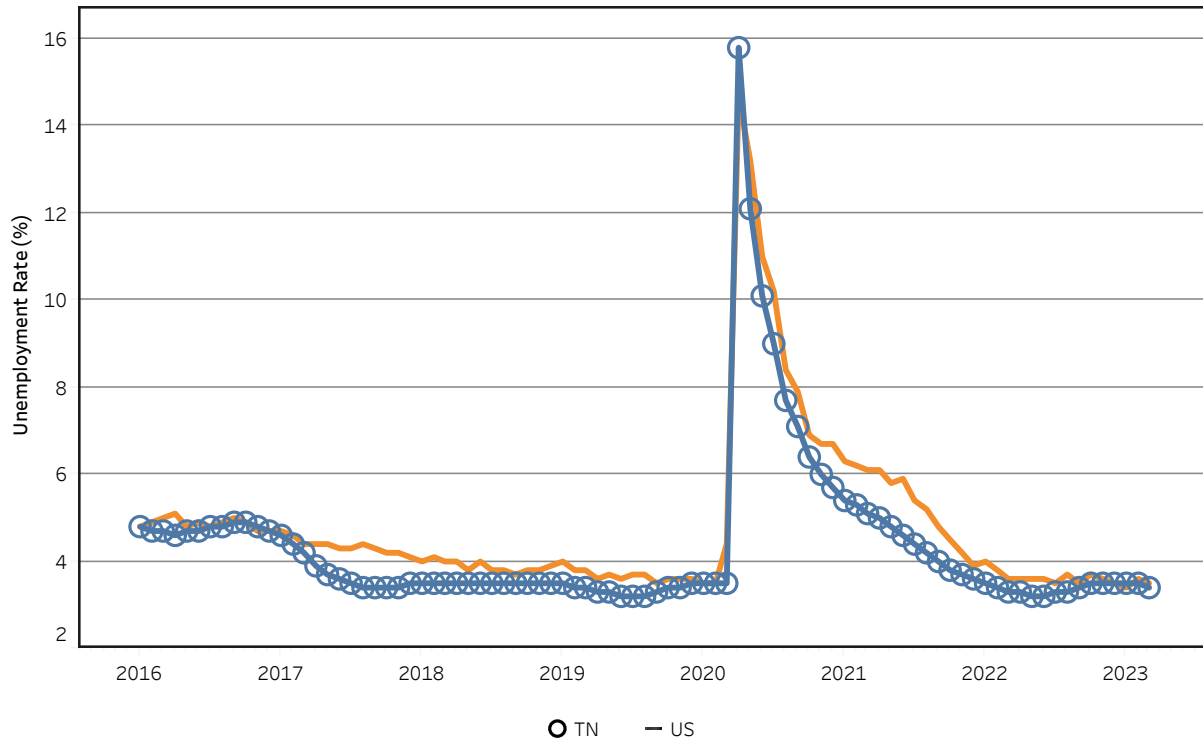
(ranked March 2023 preliminary average weekly earnings; April 2023 will be available later this month)

	Average Weekly Earning			Average Weekly Hours			Average Hourly Earning		
	March 2022	March 2023	Percent Change	March 2022	March 2023	Percent Change	March 2022	March 2023	Percent Change
FLORIDA	\$1086.0	\$1186.78	9.3%	41.90	41.70	-0.5%	\$25.92	\$28.46	9.8%
KENTUCKY	\$973.90	\$985.70	1.2%	40.80	40.20	-1.5%	\$23.87	\$24.52	2.7%
VIRGINIA	\$870.33	\$981.06	12.7%	40.20	41.50	3.2%	\$21.65	\$23.64	9.2%
ALABAMA	\$931.74	\$979.26	5.1%	41.10	41.60	1.2%	\$22.67	\$23.54	3.8%
GEORGIA	\$966.96	\$970.78	0.4%	41.20	41.70	1.2%	\$23.47	\$23.28	-0.8%
TENNESSEE	\$988.72	\$964.70	-2.4%	44.10	41.60	-5.7%	\$22.42	\$23.19	3.4%
SOUTH CAROLINA	\$988.13	\$959.50	-2.9%	42.30	38.00	-10.2%	\$23.36	\$25.25	8.1%
NORTH CAROLINA	\$900.29	\$874.34	-2.9%	43.20	40.80	-5.6%	\$20.84	\$21.43	2.8%
MISSISSIPPI	\$840.98	\$863.56	2.7%	40.20	41.90	4.2%	\$20.92	\$20.61	-1.5%
ARKANSAS	\$820.94	\$808.50	-1.5%	40.50	37.50	-7.4%	\$20.27	\$21.56	6.4%

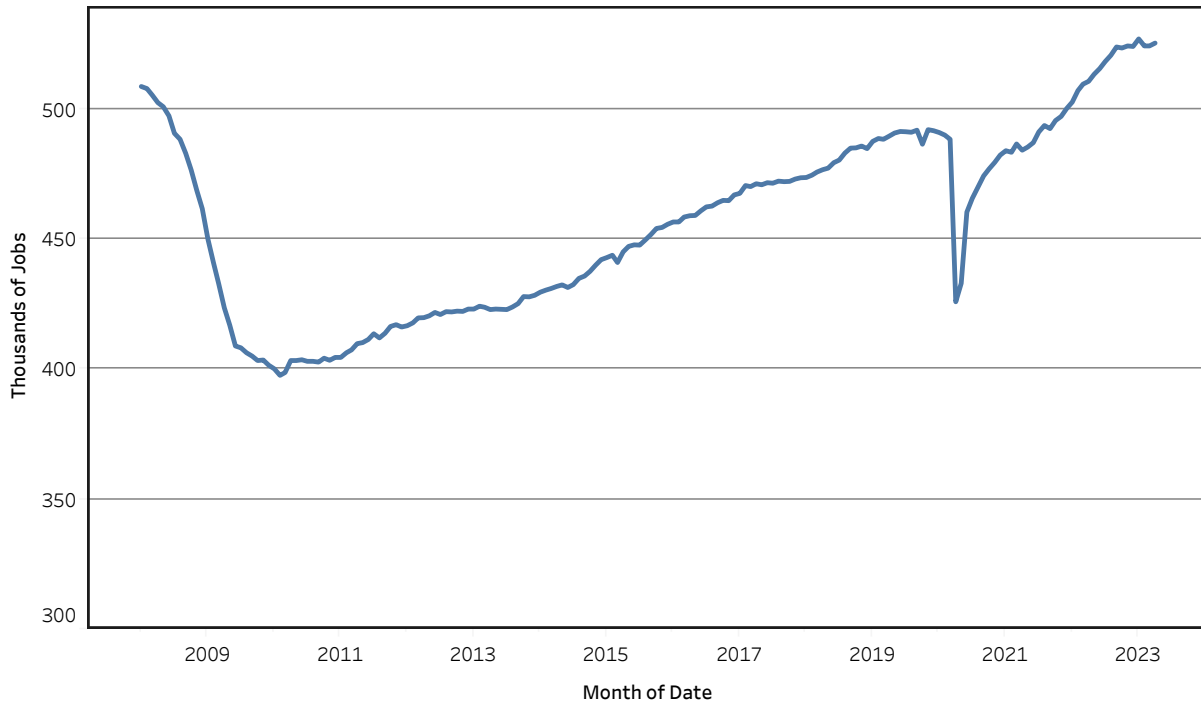
Unemployment Rates - Tennessee Seasonally Adjusted - 2021 to 2023



Unemployment Rates - US & Tennessee Seasonally Adjusted - January 2016 to March 2023



Goods - Producing Jobs in Tennessee Seasonally Adjusted - Jan 2008 to Apr 2023



Service - Providing Jobs in Tennessee Seasonally Adjusted - Jan 2008 to Apr 2023

