



The Labor Market Report

The Tennessee Department of Labor and Workforce Development

Phil Bredesen,
Governor

James G. Neeley,
Commissioner

May 2007 Data

Minimum Wage Rate Increases in July

Special Points of Interest:

- The Minimum Wage Increases for the First Time in a Decade
- Tennessee Historical Civilian Labor Force Series, 1977 to Present
- County Unemployment Rates
- Civilian Labor Force Summary
- State Unemployment Insurance Activities

Inside This Issue:

Chattanooga MSA	7
Knoxville MSA	8
Memphis MSA	9
Nashville MSA	10
Smaller MSAs	11
Consumer Price Index	12

After a decade without a raise, the value of today's federal minimum wage is lower than it was in 1950. But beginning July 24, 2007, the rate will increase from \$5.15 to \$7.25 over 24 consecutive months.

During the past several years, 33 states and the District of Columbia raised the minimum pay of their own accord. This article defines "minimum wage" and provides an overview of its history.

A minimum wage is a rate of pay fixed by either a collective bargaining agreement or legislation. It is the lowest wage payable to specified categories of employees. The setting of a minimum wage does not outweigh the right of employees to demand wages above the established minimum. Earning such increases depends on the supply and demand for any given occupation.

Unions sought government minimum wage programs as early as the 1890s. The first minimum wage was enacted

by New Zealand in 1894.

In the United States, Massachusetts enacted the earliest minimum wage law in 1912. In the following year, eight states followed suit. These early U.S. laws only applied to women and minors. At that time, American labor unions were engaged in a nationwide campaign to organize male workers. The unions opposed legislation for men because they saw this as a deterrent to joining their organizations.

By 1923, minimum wage laws for women and minors had been enacted in 15 states, the District of Columbia, and Puerto Rico. In 1933, the federal government enacted the National Industrial Recovery Act. This set the minimum wages for men and women to help alleviate the problems incurred during the Depression. In 1935, the Supreme Court invalidated this legislation.

In 1938, the federal government passed the Fair Labor Standards Act (FLSA). This fixed the minimum wage of workers

employed in interstate commerce. This wage legislation was followed by many amendments. Each succeeding amendment increased the minimum wage and the number of persons covered by that act. (See table on Page 2.)

In May 1947, the FLSA was amended by the Portal-to-Portal Act. This legislation resolved issues on what constitutes compensable hours worked under the FLSA. In 1949, legislation was passed that included workers in the air transport industry and also eliminated industry committees.

The 1961 amendments to the FLSA expanded the scope by adding the retail trade sector and increasing the wage to \$1.15 per hour. Retail and service establishments were allowed to employ full-time students at rates no more than 15 percent below the minimum wage.

The 1966 amendments extended coverage to employees in public schools, nursing homes, laundries, and the entire construction industry. Under the *(Continued on Page 2)*

Minimum Hourly Wage of Workers

Effective Dates	1938 Act ¹	1961 Amendment ²	1966 and Subsequent ³	
			Nonfarm	Farm
October 24, 1938	\$0.25			
October 24, 1939	\$0.30			
October 24, 1945	\$0.40			
January 25, 1950	\$0.75			
March 1, 1956	\$1.00			
September 3, 1961	\$1.15	\$1.00		
September 3, 1963	\$1.25			
September 3, 1964		\$1.15		
September 3, 1965		\$1.25		
February 1, 1967	\$1.40	\$1.40	\$1.00	\$1.00
February 1, 1968	\$1.60	\$1.60	\$1.15	\$1.15
February 1, 1969			\$1.30	\$1.30
February 1, 1970			\$1.45	
February 1, 1971			\$1.60	
May 1, 1974	\$2.00	\$2.00	\$1.90	\$1.60
January 1, 1975	\$2.10	\$2.10	\$2.00	\$1.80
January 1, 1976	\$2.30	\$2.30	\$2.20	\$2.00
January 1, 1977			\$2.30	\$2.20
January 1, 1978		\$2.65 for all covered, nonexempt workers		
January 1, 1979		\$2.90 for all covered, nonexempt workers		
January 1, 1980		\$3.10 for all covered, nonexempt workers		
January 1, 1981		\$3.35 for all covered, nonexempt workers		
April 1, 1990 ⁴		\$3.80 for all covered, nonexempt workers		
April 1, 1991		\$4.25 for all covered, nonexempt workers		
October 1, 1996		\$4.75 for all covered, nonexempt workers		
September 1, 1997 ⁵		\$5.15 for all covered, nonexempt workers		
July 24, 2007		\$5.85 for all covered, nonexempt workers		
July 24, 2008		\$6.55 for all covered, nonexempt workers		
July 24, 2009		\$7.25 for all covered, nonexempt workers		

¹ The 1938 Act was applicable generally to employees engaged in interstate commerce or in the production of goods for interstate commerce.

² The 1961A amendments extended coverage primarily to employees in large retail and service enterprises as well as to local transit, construction, and gaso line service station employees.

³ The 1966 Amendments extended coverage to state and local government employees of hospitals, nursing homes, and schools and to laundries, dry cleaners, large hotels, motels, restaurants, and farms. Subsequent amendments extended coverage to the remaining federal, state, and local government employees who were not protected in 1966, to certain workers in retail and service trades previously exempted, and to certain domestic workers in private household employment.

⁴ Grandfather clause—Employees who do not meet the tests for individual coverage, and whose employers were covered by the FLSA on March 31, 1990, and who fail to meet the increased annual dollar volume test for enterprise coverage must continue to receive at least \$3.35 an hour.

⁵ A subminimum wage – \$4.25 an hour – is established for employees under 20 years of age during their first 90 consecutive calendar days of employment.

(Continued from previous page)
FLSA, in 1974 Congress included all nonsupervisory employees of federal, state, and local governments and many domestic workers.

In 1990, Congress enacted legislation requiring regulations to be

issued providing a special overtime exemption. This targeted certain highly skilled professionals in the computer field who receive not less than 6 1/2 times the applicable minimum wage.

The 1996 amendments increased the minimum wage to \$4.75 an hour.

They also established a wage of \$4.25 an hour for newly hired employees under age 20 during the first 90 consecutive days after being hired. The amendments revised tip credit provisions to allow employers to pay tipped employees no less than \$2.13 an hour if they received the remainder of the statutory minimum in tips.

Statewide

HISTORICAL CIVILIAN LABOR FORCE

UNEMPLOYMENT RATES BY COUNTY*

(NUMBERS IN THOUSANDS)

MONTHLY DATA NOT SEASONALLY ADJUSTED

Year and Month	Civilian Labor Force							Unemployed Number	Rate (%)
	Total	Employment	Employed						
			Total	Nonfarm Employment					
			**Manu- facturing	**Trade	**Services				
1977	1,939.0	1,816.7	1,648.1	507.5	357.2	254.5	122.3	6.3 %	
1978	1,983.7	1,866.2	1,737.0	526.0	379.1	270.7	117.5	5.9	
1979	2,040.5	1,918.5	1,777.3	524.7	388.7	285.4	122.0	6.0	
1980	2,071.6	1,920.1	1,746.6	502.1	379.7	291.0	151.5	7.3	
1981	2,123.1	1,927.6	1,775.4	506.9	379.9	304.4	195.5	9.2	
1982	2,141.2	1,891.5	1,703.0	466.7	380.5	313.1	249.7	11.7	
1983	2,188.2	1,932.4	1,719.0	468.6	389.9	323.4	255.8	11.7	
1984	2,233.5	2,026.4	1,812.0	497.1	413.3	344.3	207.1	9.3	
1985	2,255.7	2,070.0	1,867.8	492.4	435.3	360.2	185.7	8.2	
1986	2,291.3	2,110.7	1,929.8	490.5	452.1	384.7	180.6	7.9	
1987	2,324.1	2,166.5	2,011.6	497.4	477.2	408.9	157.6	6.8	
1988	2,333.6	2,197.2	2,092.1	511.9	495.6	440.3	136.4	5.8	
1989	2,364.9	2,241.3	2,167.2	524.5	508.4	467.2	123.6	5.2	
1990	2,401.1	2,269.0	2,193.2	493.4	379.1	611.0	132.1	5.5	
1991	2,425.4	2,266.0	2,183.6	480.3	373.0	626.7	159.4	6.6	
1992	2,479.5	2,316.7	2,245.0	492.8	374.1	664.8	162.8	6.6	
1993	2,543.3	2,391.6	2,328.5	502.8	382.5	709.8	151.7	6.0	
1994	2,645.7	2,511.1	2,423.0	513.8	398.4	751.4	134.6	5.1	
1995	2,718.0	2,574.0	2,498.9	518.0	412.6	795.0	144.0	5.3	
1996	2,758.4	2,611.0	2,533.3	501.5	420.9	814.3	147.4	5.3	
1997	2,788.3	2,640.0	2,584.0	498.0	430.5	849.7	148.3	5.3	
1998	2,811.7	2,685.2	2,638.4	498.6	437.1	875.7	126.5	4.5	
1999	2,838.7	2,722.1	2,685.3	494.7	443.6	900.8	116.6	4.1	
2000	2,871.5	2,756.5	2,728.9	488.1	447.5	930.9	115.0	4.0	
2001	2,859.7	2,728.5	2,688.3	454.2	446.6	921.5	131.2	4.6	
2002	2,883.4	2,733.7	2,664.4	428.5	438.7	938.0	149.7	5.2	
2003	2,892.0	2,727.5	2,667.5	414.1	440.8	950.3	164.5	5.7	
2004	2,897.0	2,739.0	2,706.1	411.8	447.5	978.7	158.1	5.5	
2005	2,909.6	2,747.6	2,743.1	408.8	454.6	1,005.6	161.9	5.6	
2006	2,990.2	2,835.5	2,783.1	400.1	460.6	1,030.4	154.6	5.2	
2007									
January	3,002.4	2,841.9	2,754.7	393.7	457.9	1,015.7	160.5	5.3 %	
February	3,004.6	2,845.4	2,761.6	392.1	456.0	1,019.7	159.2	5.3	
March	3,029.1	2,878.4	2,791.9	393.5	461.1	1,035.3	150.8	5.0	
April (r)	3,004.1	2,881.1	2,806.6	393.6	462.4	1,044.9	123.0	4.1	
May (p)	3,030.6	2,902.0	2,812.9	391.9	464.0	1,049.7	128.6	4.2	
June									
July									
August									
September									
October									
November									
December									

(r)=revised

**These industries not comparable to industry employment data before

(p)=preliminary

1990 because of change to NAICS coding system.

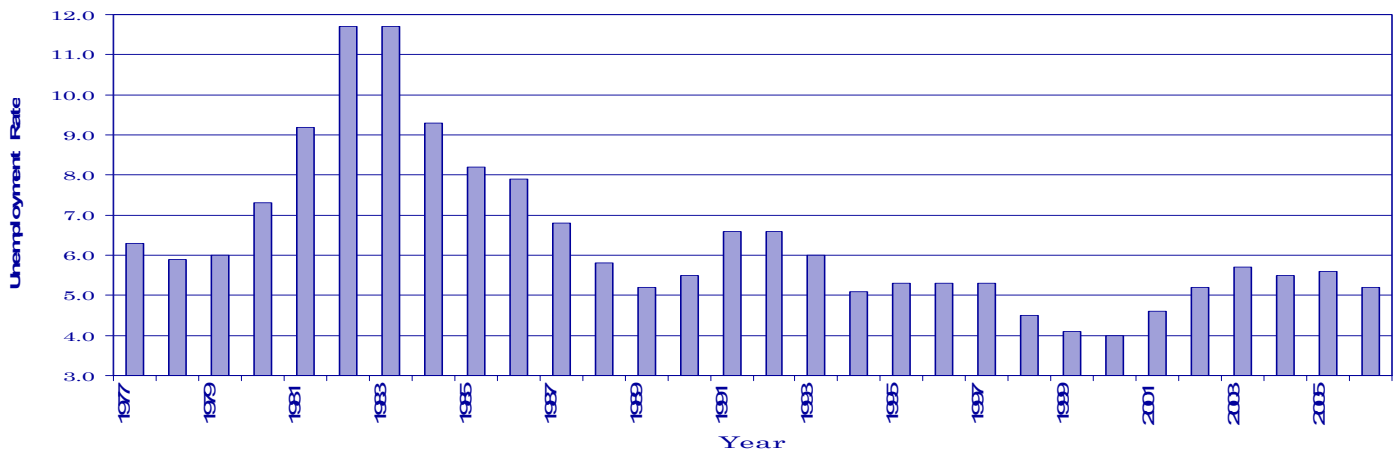
Trade = Wholesale and Retail Trade

Services = Professional/Business Services, Educational/Health Services, Leisure/Hospitality, and Other Services.

County	May	May	County	May	May
	2006	2007		2006	2007
Anderson	4.6	4.0	Lauderdale	7.8	6.1
Bedford	4.6	4.2	Lawrence	11.5	7.5
Benton	6.5	5.3	Lewis	6.3	6.9
Bledsoe	6.7	5.7	Lincoln	4.0	3.3
Blount	4.0	3.4	Loudon	4.0	3.6
Bradley	4.8	4.0	Macon	7.5	5.2
Campbell	5.8	4.9	Madison	5.2	4.7
Cannon	5.0	4.6	Marion	5.6	5.7
Carroll	5.8	5.6	Marshall	6.0	7.4
Carter	4.8	4.5	Maury	4.7	8.5
Cheatham	4.0	3.3	McMinn	5.3	4.7
Chester	5.3	4.6	McNairy	6.4	4.9
Claiborne	5.1	4.6	Meigs	6.4	5.6
Clay	10.3	6.4	Monroe	5.3	5.3
Cocke	6.4	5.5	Montgomery	4.4	4.1
Coffee	5.5	4.3	Moore	4.4	3.5
Crockett	6.4	5.6	Morgan	6.3	5.3
Cumberland	5.3	4.7	Obion	5.1	5.2
Davidson	4.0	3.5	Overton	5.5	5.9
Decatur	6.0	5.1	Perry	5.6	6.4
DeKalb	5.0	4.3	Pickett	7.3	7.5
Dickson	4.2	3.6	Polk	5.3	4.0
Dyer	5.7	4.5	Putnam	5.3	4.1
Fayette	5.1	5.3	Rhea	6.0	5.2
Fentress	5.5	5.0	Roane	5.0	4.1
Franklin	5.3	4.5	Robertson	4.5	4.0
Gibson	7.5	6.7	Rutherford	3.9	3.5
Giles	6.7	6.0	Scott	6.3	6.9
Grainger	5.2	4.5	Sequatchie	5.1	4.2
Greene	7.4	6.1	Sevier	4.5	3.8
Grundy	7.8	5.5	Shelby	5.4	4.5
Hamblen	5.7	4.3	Smith	5.6	4.4
Hamilton	4.3	3.5	Stewart	8.6	5.4
Hancock	6.8	5.3	Sullivan	4.3	3.7
Hardeman	6.8	5.6	Sumner	4.1	3.8
Hardin	6.0	5.0	Tipton	5.4	4.6
Hawkins	5.3	4.0	Trousdale	6.0	4.6
Haywood	5.8	6.8	Unicoi	5.2	4.1
Henderson	6.1	5.3	Union	4.5	3.8
Henry	6.6	5.6	Van Buren	7.6	5.8
Hickman	4.9	4.8	Warren	9.1	6.2
Houston	7.1	4.8	Washington	4.4	3.8
Humphreys	5.9	4.6	Wayne	10.1	6.9
Jackson	5.9	5.8	Weakley	5.9	6.0
Jefferson	5.1	4.3	White	8.8	5.7
Johnson	5.7	5.1	Williamson	3.4	3.7
Knox	3.9	3.1	Wilson	4.2	3.4
Lake	6.7	5.3			

*Data Not Seasonally Adjusted

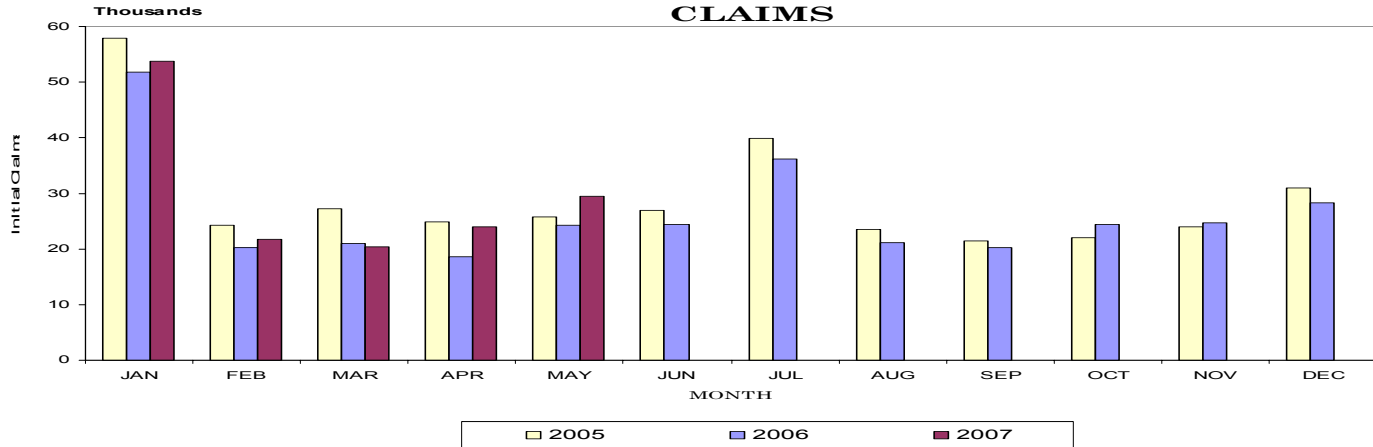
Unemployment Rates 1977-2006



Statewide

UNEMPLOYMENT INSURANCE ACTIVITIES

MONTHLY INITIAL CLAIMS



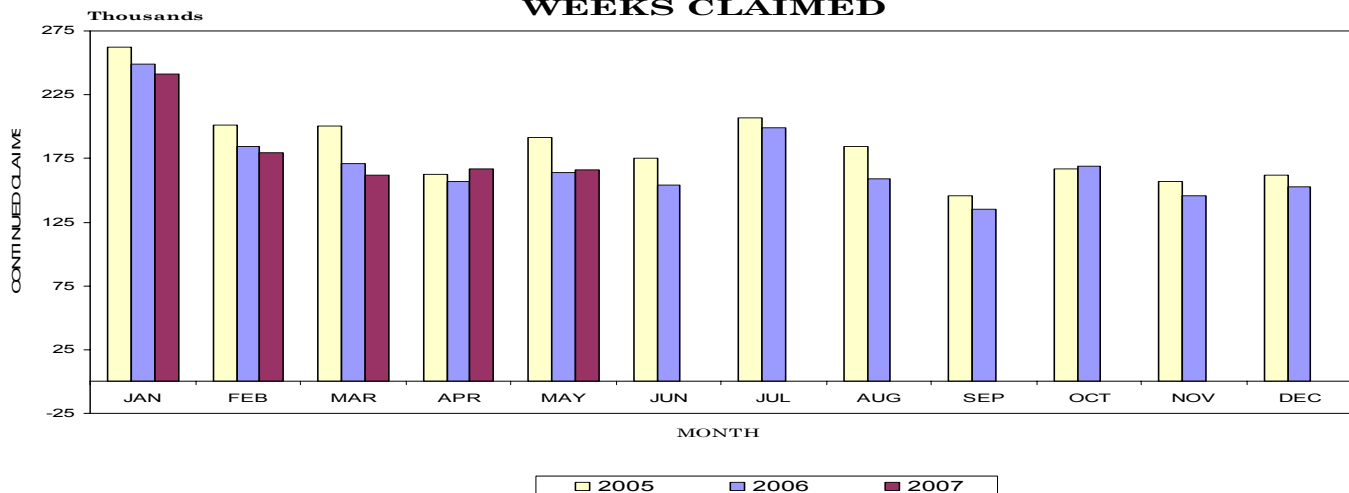
BENEFIT PROGRAMS

STATE BENEFIT PROGRAM				FEDERAL BENEFIT PROGRAMS			
CLAIMS	May 2006	Apr. 2007	May 2007	FORMER FEDERAL EMPLOYEES	May 2006	Apr. 2007	May 2007
Initial Claims	24,232	23,947	29,456	Benefits Paid	\$363,192	\$293,326	\$313,746
Continued Weeks Claimed	163,771	166,637	166,130	Benefit Weeks Claimed	1,384	934	1,125
Nonmonetary Determinations	5,919	5,289	6,201	Initial Claims	103	96	165
Appeals Decisions	1,838	1,696	1,649	Continued Weeks Claimed	1,366	1,072	1,099
Lower Authority	1,558	1,405	1,418	Appeals Decisions	14	12	12
Higher Authority	280	291	231				
BENEFITS				FORMER MILITARY PERSONNEL			
Amount Paid	\$32,580,861	\$33,686,147	\$34,213,471	Benefits Paid	\$744,680	\$429,621	\$389,378
Benefit Weeks Paid	164,795	148,717	170,208	Benefit Weeks Claimed	2,746	1,387	1,437
Average Weekly Benefit Amount	\$218	\$222	\$226	Initial Claims	175	131	122
First Payments	11,631	8,997	12,571	Continued Weeks Claimed	2,650	1,513	1,372
Final Payments	4,677	4,302	4,144	Appeals Decisions	4	10	2
Average Weeks Duration	14	13	13				
Trust Fund Balance*	\$715,617,220	\$650,405,664	\$694,039,363				

*Trust Fund includes a one-time deposit in March 2002 of \$162 million of Reed Act funds.

CONTINUED WEEKS CLAIMED

MONTHLY CONTINUED WEEKS CLAIMED



Statewide

ESTIMATED NONFARM EMPLOYMENT (in thousands)

Industry	Revised		Preliminary	Net Change	
	May 2006	April 2007	May 2007	May 2006	Apr. 2007
Total Nonfarm	2,790.6	2,806.6	2,812.9	22.3	6.3
Total Private	2,371.0	2,384.7	2,392.9	21.9	8.2
Goods-Producing	539.2	535.3	535.5	-3.7	0.2
Natural Resources & Mining	4.1	4.0	4.2	0.1	0.2
Construction	131.2	137.7	139.4	8.2	1.7
Manufacturing	403.9	393.6	391.9	-12.0	-1.7
Durable Goods Manufacturing	253.6	248.8	247.1	-6.5	-1.7
Wood Product Manufacturing	18.2	18.0	18.1	-0.1	0.1
Nonmetallic Mineral Product Manufacturing	16.2	16.7	16.8	0.6	0.1
Primary Metal Manufacturing	11.7	11.3	11.2	-0.5	-0.1
Fabricated Metal Product Manufacturing	43.7	44.8	44.8	1.1	0.0
Machinery Manufacturing	34.1	32.9	32.8	-1.3	-0.1
Computer & Electronic Product Manufacturing	9.4	8.6	8.5	-0.9	-0.1
Electrical Equipment & Appliance Mfg.	23.3	23.5	23.4	0.1	-0.1
Transportation Equipment Manufacturing	63.6	61.6	60.1	-3.5	-1.5
Motor Vehicle Parts Manufacturing	36.9	35.3	35.3	-1.6	0.0
Furniture & Related Product Manufacturing	18.3	17.0	16.9	-1.4	-0.1
Miscellaneous Manufacturing	15.1	14.4	14.5	-0.6	0.1
Nondurable Goods Manufacturing	150.3	144.8	144.8	-5.5	0.0
Textile Mills, Products, & Apparel	16.4	14.8	14.7	-1.7	-0.1
Food Manufacturing	34.3	33.2	33.2	-1.1	0.0
Animal Slaughtering & Processing	12.1	12.1	12.1	0.0	0.0
Bakeries & Tortilla Manufacturing	7.6	7.2	7.3	-0.3	0.1
Beverage & Tobacco Product Manufacturing	5.4	4.8	4.9	-0.5	0.1
Paper Manufacturing	18.5	18.1	18.2	-0.3	0.1
Printing & Related Support Activities	17.7	16.8	16.9	-0.8	0.1
Chemical Manufacturing	26.2	25.4	25.3	-0.9	-0.1
Plastics & Rubber Products Manufacturing	29.5	29.5	29.2	-0.3	-0.3
Plastics Product Manufacturing	15.5	15.9	15.6	0.1	-0.3
Rubber Product Manufacturing	14.0	13.6	13.6	-0.4	0.0
Service-Providing	2,251.4	2,271.3	2,277.4	26.0	6.1
Trade, Transportation, & Utilities	606.4	609.3	611.7	5.3	2.4
Wholesale Trade	132.5	134.3	135.0	2.5	0.7
Merchant Wholesalers, Durable Goods	68.7	69.8	70.3	1.6	0.5
Merchant Wholesalers, Nondurable Goods	47.0	47.3	47.3	0.3	0.0
Wholesale Electronic Markets	16.8	17.2	17.4	0.6	0.2
Retail Trade	327.0	328.1	329.0	2.0	0.9
Motor Vehicle & Parts Dealers	44.0	44.1	44.2	0.2	0.1
Furniture & Home Furnishings Stores	10.3	10.1	10.1	-0.2	0.0
Building Material, Garden Equipment, & Food & Beverage Stores	29.6	30.8	31.3	1.7	0.5
Health & Personal Care Stores	46.3	46.8	47.0	0.7	0.2
Gasoline Stations	22.5	22.9	23.0	0.5	0.1
Clothing & Clothing Accessories Stores	24.3	24.0	24.2	-0.1	0.2
Sporting Goods, Hobby, Book, & Music Stores	28.4	27.9	27.4	-1.0	-0.5
General Merchandise Stores	12.3	12.0	12.2	-0.1	0.2
Miscellaneous Store Retailers	71.3	71.1	71.3	0.0	0.2
Nonstore Retailers	17.8	17.4	17.5	-0.3	0.1
Nonstore Retailers	11.5	11.8	11.8	0.3	0.0
Transportation, Warehousing, & Utilities	146.9	146.9	147.7	0.8	0.8
Utilities	3.5	3.3	3.3	-0.2	0.0
Transportation & Warehousing	143.4	143.6	144.4	1.0	0.8
Truck Transportation	64.3	64.4	64.8	0.5	0.4
Information	50.1	51.4	51.6	1.5	0.2
Publishing Industries (except internet)	14.5	14.5	14.4	-0.1	-0.1
Telecommunications	15.7	17.0	16.9	1.2	-0.1
Financial Activities	144.1	143.8	144.4	0.3	0.6
Finance & Insurance	107.4	106.8	107.1	-0.3	0.3
Real Estate, Rental, & Leasing	36.7	37.0	37.3	0.6	0.3
Professional, Business Services	316.6	319.5	318.2	1.6	-1.3
Professional, Scientific, & Technical Services	106.0	109.1	106.6	0.6	-2.5
Management of Companies & Enterprises	23.8	23.7	23.8	0.0	0.1
Administrative, Support, & Waste Management	186.8	186.7	187.8	1.0	1.1
Educational & Health Services	338.6	345.5	346.1	7.5	0.6
Educational Services	45.9	47.3	47.0	1.1	-0.3
Health Care & Social Assistance	292.7	298.2	299.1	6.4	0.9
Ambulatory Health Care Services	108.9	111.9	112.4	3.5	0.5
Hospitals	90.1	90.9	91.0	0.9	0.1
Nursing & Residential Care Facilities	52.3	53.3	53.4	1.1	0.1
Social Assistance	41.4	42.1	42.3	0.9	0.2
Leisure & Hospitality	274.6	278.2	282.8	8.2	4.6
Arts, Entertainment, & Recreation	32.4	31.7	33.9	1.5	2.2
Accommodation & Food Services	242.2	246.5	248.9	6.7	2.4
Accommodation	35.4	35.4	36.1	0.7	0.7
Food Services & Drinking Places	206.8	211.1	212.8	6.0	1.7
Other Services	101.4	101.7	102.6	1.2	0.9
Repair & Maintenance	22.5	22.1	22.6	0.1	0.5
Personal & Laundry Services	24.8	25.2	25.4	0.6	0.2
Government	419.6	421.9	420.0	0.4	-1.9
Federal Government	48.5	48.4	48.4	-0.1	0.0
State Government	97.8	99.7	97.8	0.0	-1.9
State Government Educational Services	49.6	51.6	49.6	0.0	-2.0
Local Government	273.3	273.8	273.8	0.5	0.0
Local Government Educational Services	140.9	145.2	144.6	3.7	-0.6

HOURS AND EARNINGS OF PRODUCTION WORKERS

AVERAGE WEEKLY EARNINGS

Industry	May 2006	Apr. 2007	May 2007
Manufacturing	\$557.17	\$542.14	\$546.88
Durable Goods Manufacturing	\$542.49	\$528.84	\$536.23
Fabricated Metal Product Manufacturing	\$611.84	\$625.91	\$612.69
Machinery Manufacturing	\$531.94	\$589.58	\$621.96
Nondurable Goods Manufacturing	\$583.23	\$566.40	\$563.79
Food Manufacturing	\$458.08	\$415.45	\$437.88

AVERAGE WEEKLY HOURS

Industry	May 2006	Apr. 2007	May 2007
Manufacturing	39.6	39.2	39.6
Durable Goods Manufacturing	39.0	38.8	39.4
Fabricated Metal Product Manufacturing	40.2	40.2	39.0
Machinery Manufacturing	39.2	43.9	45.8
Nondurable Goods Manufacturing	40.7	40.0	39.9
Food Manufacturing	35.9	35.0	35.6

AVERAGE HOURLY EARNINGS

Industry	May 2006	Apr. 2007	May 2007
Manufacturing	\$14.07	\$13.83	\$13.81
Durable Goods Manufacturing	\$13.91	\$13.63	\$13.61
Fabricated Metal Product Manufacturing	\$15.22	\$15.57	\$15.71
Machinery Manufacturing	\$13.57	\$13.43	\$13.58
Nondurable Goods Manufacturing	\$14.33	\$14.16	\$14.13
Food Manufacturing	\$12.76	\$11.87	\$12.30

NONFARM EMPLOYMENT AND LABOR FORCE IN TENNESSEE

Tennessee's seasonally adjusted estimated unemployment rate for May 2007 was 4.7 percent, up 0.3 percent from the April 2007 rate. This is the 33rd of 34 months the current rate is greater than the national average.

The United States' unemployment rate was 4.5 percent in May 2007. In May 2006, the national unemployment rate was 4.6 percent, and the state's unemployment rate was 5.3 percent.

Across Tennessee, the unemployment rate increased in 50 counties, decreased in 25 counties, and remained the same in 20 counties. The lowest rate occurred in Knox County at 3.1 percent, up 0.1 percent from the previous month. The highest rate was Maury County's 8.5 percent, up from 3.2 percent in April 2007.

(Continued on Page 6)

CIVILIAN LABOR FORCE

CIVILIAN LABOR FORCE SUMMARY

		May 2006				April 2007				May 2007			
		Labor Force	Employment	Unemployed	Rate	Labor Force	Employment	Unemployed	Rate	Labor Force	Employment	Unemployed	Rate
Seasonally Adjusted													
U.S.		151,051,000	144,045,000	7,006,000	4.6	152,587,000	145,786,000	6,801,000	4.5	152,762,000	145,943,000	6,819,000	4.5
TENNESSEE		2,990,400	2,830,600	159,800	5.3	3,030,600	2,898,700	131,900	4.4	3,045,800	2,902,700	143,000	4.7
Not Seasonally Adjusted													
U.S.		150,696,000	144,041,000	6,655,000	4.4	151,829,000	145,297,000	6,532,000	4.3	152,350,000	145,864,000	6,486,000	4.3
TENNESSEE		2,967,800	2,821,800	146,000	4.9	3,004,100	2,881,100	123,000	4.1	3,030,600	2,902,000	128,600	4.2
Metropolitan Statistical Areas													
Chattanooga		257,130	246,080	11,050	4.3	261,300	251,900	9,400	3.6	262,340	252,650	9,690	3.7
Clarksville		106,270	100,670	5,600	5.3	108,280	103,370	4,910	4.5	108,250	102,900	5,340	4.9
Cleveland		55,170	52,500	2,670	4.8	55,070	52,860	2,200	4.0	55,880	53,630	2,250	4.0
Jackson		54,910	52,040	2,870	5.2	55,850	53,330	2,520	4.5	56,700	54,040	2,660	4.7
Johnson City		96,350	91,920	4,430	4.6	98,350	94,420	3,930	4.0	99,300	95,280	4,020	4.0
Kingsport-Bristol		143,200	136,780	6,420	4.5	144,630	138,950	5,690	3.9	146,210	140,340	5,870	4.0
Knoxville		345,360	331,620	13,740	4.0	351,080	339,790	11,290	3.2	354,800	343,090	11,710	3.3
Memphis		603,450	570,470	32,980	5.5	611,810	583,640	28,160	4.6	616,820	587,870	28,950	4.7
Morristown		64,690	61,210	3,480	5.4	64,740	62,010	2,730	4.2	65,260	62,440	2,820	4.3
Nashville		763,150	731,900	31,250	4.1	777,440	750,690	26,760	3.4	786,040	757,450	28,590	3.6
Micropolitan Statistical Areas													
Athens		24,770	23,450	1,310	5.3	24,820	23,640	1,180	4.7	24,910	23,740	1,180	4.7
Brownsville		9,600	9,050	560	5.8	9,750	9,250	500	5.1	9,690	9,030	660	6.8
Columbia		36,280	34,590	1,690	4.7	36,020	34,120	1,900	5.3	35,980	32,920	3,060	8.5
Cookeville		50,050	47,360	2,690	5.4	50,180	47,910	2,280	4.5	50,410	48,080	2,330	4.6
Crossville		22,830	21,610	1,220	5.3	22,690	21,590	1,100	4.8	22,890	21,820	1,070	4.7
Dyersburg		17,500	16,500	1,000	5.7	17,210	16,470	750	4.3	17,490	16,700	790	4.5
Greeneville		32,650	30,220	2,430	7.4	32,220	30,240	1,980	6.1	32,140	30,180	1,960	6.1
Harriman		26,360	25,040	1,320	5.0	26,610	25,530	1,080	4.1	26,860	25,760	1,100	4.1
Humboldt		21,000	19,430	1,570	7.5	21,130	19,780	1,360	6.4	21,280	19,850	1,430	6.7
LaFollette		16,750	15,770	970	5.8	16,660	15,870	790	4.7	16,950	16,120	840	4.9
Lawrenceburg		16,800	14,870	1,920	11.5	16,550	15,320	1,230	7.5	16,450	15,210	1,240	7.5
Lewisburg		12,520	11,770	750	6.0	12,520	11,840	670	5.4	12,670	11,720	940	7.4
Martin		15,410	14,500	910	5.9	15,950	15,240	710	4.5	15,940	14,980	960	6.0
McMinnville		17,870	16,250	1,620	9.1	17,530	16,410	1,120	6.4	17,490	16,410	1,080	6.2
Newport		16,220	15,190	1,030	6.4	16,210	15,310	900	5.5	16,400	15,500	900	5.5
Paris		14,100	13,170	940	6.6	14,010	13,240	770	5.5	14,110	13,320	790	5.6
Sevierville		47,100	44,980	2,120	4.5	47,510	45,560	1,950	4.1	48,730	46,890	1,850	3.8
Shelbyville		22,060	21,040	1,030	4.6	22,290	21,450	840	3.8	22,400	21,470	940	4.2
Tullahoma		48,290	45,690	2,590	5.4	48,610	46,550	2,060	4.2	48,850	46,730	2,120	4.3
Union City		18,160	17,170	990	5.4	18,970	18,000	980	5.2	19,040	17,940	1,100	5.8

(Continued from Page 5) Total nonfarm employment increased by 22,300 jobs from May 2006 to May 2007. During this period, there were increases in construction (up 8,200 jobs); leisure/hospitality (up 8,200 jobs), which includes an increase of 6,700 jobs in accommodation/food services and 1,500 jobs in arts/entertainment/recreation; education/health services (up 7,500 jobs), which includes an increase of 6,400 jobs in health care/social assistance; local government educational services (up 3,700 jobs); wholesale trade (up 2,500 jobs), which includes an increase of 1,600 jobs in durable goods merchant

wholesalers; retail trade (up 2,000 jobs), which includes an increase of 1,700 jobs in building material/garden equipment/supplies; professional/business services (up 1,600 jobs), which includes an increase of 1,000 jobs in administrative/support/waste management; information (up 1,500 jobs), which includes an increase of 1,200 jobs in telecommunications; and other services (up 1,200 jobs). This was partially offset by manufacturing declines of 3,500 jobs in transportation equipment, of which 1,600 jobs were in motor vehicle parts; 1,700 jobs in textile mills/products/apparel;

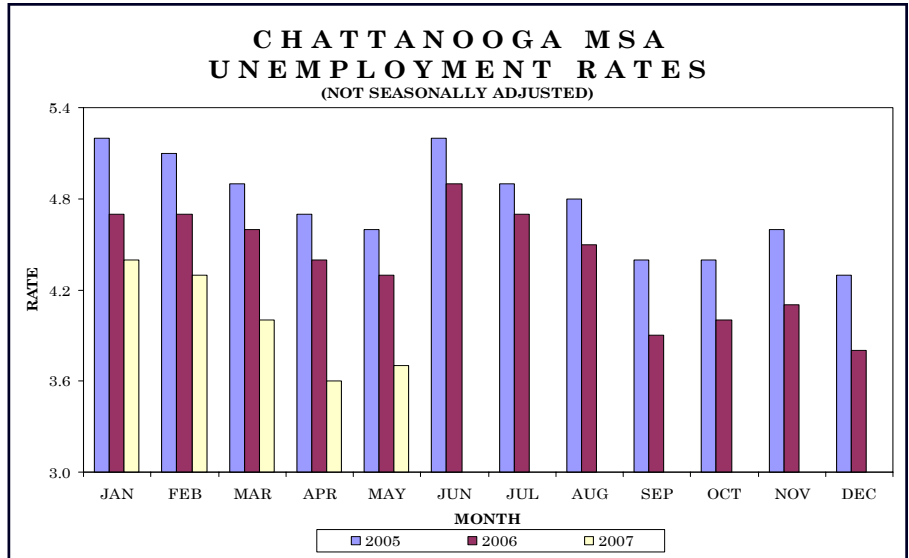
1,400 jobs in furniture/related product; and 1,300 jobs in machinery.

During May, nonfarm employment increased by 6,300 jobs. There were seasonal increases in accommodation/food services (up 2,400 jobs), which includes an increase of 1,700 jobs in food services/drinking places; arts/entertainment/recreation (up 2,200 jobs); and construction (up 1,700 jobs). This was offset by declines in professional/scientific/technical (down 2,500 jobs), state government educational services (down 2,000 jobs); and transportation equipment manufacturing (down 1,500 jobs).

The data from all the nonfarm employment estimates tables includes all full- and part-time nonfarm wage and salary employees who worked during or received pay for any part of the pay period that includes the 12th of the month. This is a count of jobs by place of work. Agricultural workers, proprietors, self-employed persons, workers in private households, and unpaid family workers are excluded. These numbers may not add due to rounding. Data is based on the 2006 benchmark.

Total nonfarm employment decreased by 800 jobs from April to May. There were seasonal declines in state government and educational/health services (both down 600 jobs). This was partially offset by increases in leisure/hospitality (up 300 jobs), which includes an increase of 200 jobs in accommodation/food services and natural resources/mining/construction (up 200 jobs).

During the past 12 months, nonfarm employment increased by 2,400 jobs. During that time, goods-producing jobs decreased by 100, and service-providing jobs increased by 2,500.



HOURS AND EARNINGS OF PRODUCTION WORKERS

CHATTANOOGA MSA

Industry	Average Weekly Earnings			Average Weekly Hours			Average Hourly Earnings		
	May 2006	Apr. 2007	May 2007	May 2006	Apr. 2007	May 2007	May 2006	Apr. 2007	May 2007
	Manufacturing	\$535.25	\$540.20	\$535.19	41.3	41.3	41.2	\$12.96	\$13.08
Durable Goods Manufacturing	\$566.37	\$578.45	\$574.74	40.6	41.2	41.2	\$13.95	\$14.04	\$13.95
Nondurable Goods Manufacturing	\$506.99	\$501.32	\$493.61	41.9	41.5	41.1	\$12.10	\$12.08	\$12.01

ESTIMATED NONFARM EMPLOYMENT (in thousands)

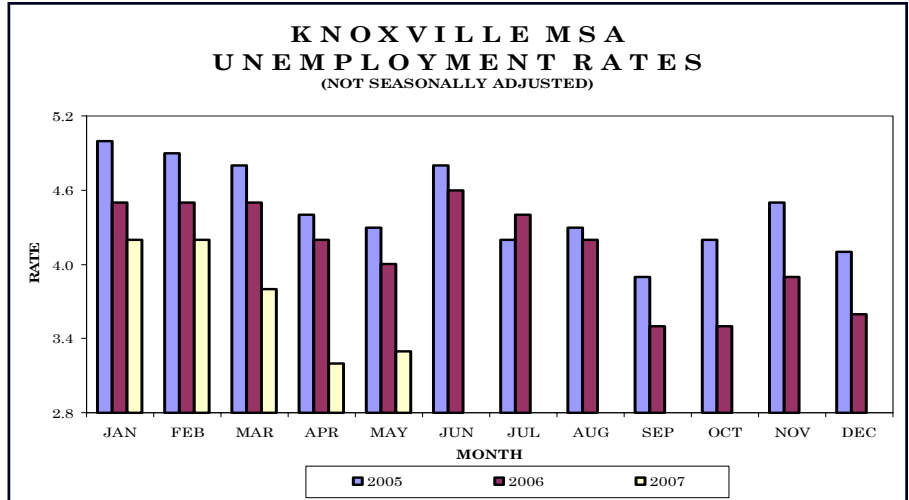
Industry	May 2006	Revised April 2007	Preliminary May 2007	Net Change	
				May 2006 May 2007	Apr. 2007 May 2007
Total Nonfarm	245.2	248.4	247.6	2.4	-0.8
Total Private	211.0	213.3	213.0	2.0	-0.3
Goods-Producing	47.1	46.9	47.0	-0.1	0.1
Natural Resources, Mining, & Construction	11.6	11.5	11.7	0.1	0.2
Manufacturing	35.5	35.4	35.3	-0.2	-0.1
Durable Goods Manufacturing	16.4	16.6	16.6	0.2	0.0
Nondurable Goods Manufacturing	19.1	18.8	18.7	-0.4	-0.1
Textile Mills	4.4	4.3	4.3	-0.1	0.0
Service-Providing	198.1	201.5	200.6	2.5	-0.9
Trade, Transportation, & Utilities	55.8	56.5	56.3	0.5	-0.2
Wholesale Trade	8.8	8.9	8.8	0.0	-0.1
Retail Trade	26.5	26.9	26.8	0.3	-0.1
General Merchandise Stores	6.4	6.7	6.7	0.3	0.0
Transportation, Warehousing, & Utilities	20.5	20.7	20.7	0.2	0.0
Information	3.3	3.7	3.7	0.4	0.0
Financial Activities	18.6	19.0	19.0	0.4	0.0
Professional & Business Services	26.4	27.7	27.7	1.3	0.0
Educational & Health Services	25.7	25.8	25.2	-0.5	-0.6
Leisure & Hospitality	23.4	23.0	23.3	-0.1	0.3
Accommodation & Food Services	20.5	20.6	20.8	0.3	0.2
Other Services	10.7	10.7	10.8	0.1	0.1
Government	34.2	35.1	34.6	0.4	-0.5
Federal Government	6.3	6.3	6.3	0.0	0.0
State Government	5.4	6.2	5.6	0.2	-0.6
Local Government	22.5	22.6	22.7	0.2	0.1



Knoxville MSA - Anderson, Blount, Knox, Loudon, Union

Total nonfarm employment increased by 300 jobs from April to May. There were seasonal increases in leisure/hospitality (up 300 jobs), which includes an increase of 200 jobs in food services/drinking places; and administrative/support/waste management (up 200 jobs). This was partially offset by a decline of 500 jobs in state government.

During the past 12 months, nonfarm employment increased by 4,400 jobs. During that time, goods-producing jobs increased by 1,100, while service-providing jobs increased by 3,300.



HOURS AND EARNINGS OF PRODUCTION WORKERS KNOXVILLE MSA

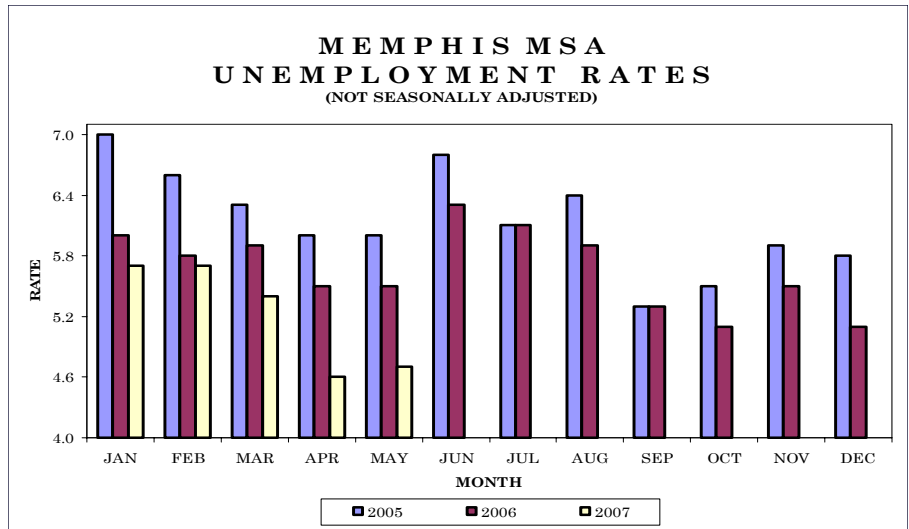
Industry	Average Weekly Earnings			Average Weekly Hours			Average Hourly Earnings		
	May 2006	Apr. 2007	May 2007	May 2006	Apr. 2007	May 2007	May 2006	Apr. 2007	May 2007
Manufacturing	\$616.62	\$650.00	\$641.12	39.2	40.0	39.6	\$15.73	\$16.25	\$16.19
Durable Goods Manufacturing	\$678.19	\$710.03	\$695.02	39.8	39.8	39.2	\$17.04	\$17.84	\$17.73
Nondurable Goods Manufacturing	\$473.89	\$521.64	\$525.20	37.7	40.5	40.4	\$12.57	\$12.88	\$13.00

ESTIMATED NONFARM EMPLOYMENT (in thousands)

Industry	May 2006	Revised	Preliminary	Net Change	
		April 2007	May 2007	May 2006	Apr. 2007
		2007	2007	May 2007	May 2007
Total Nonfarm	332.2	336.3	336.6	4.4	0.3
Total Private	280.1	283.4	284.2	4.1	0.8
Goods-Producing	56.8	57.9	57.9	1.1	0.0
Natural Resources, Mining, & Construction	18.0	19.2	19.3	1.3	0.1
Manufacturing	38.8	38.7	38.6	-0.2	-0.1
Durable Goods Manufacturing	28.9	28.7	28.7	-0.2	0.0
Fabricated Metal Product Manufacturing	8.6	8.6	8.7	0.1	0.1
Transportation Equipment Manufacturing	9.2	8.6	8.6	-0.6	0.0
Nondurable Goods Manufacturing	9.9	10.0	9.9	0.0	-0.1
Service-Providing	275.4	278.4	278.7	3.3	0.3
Trade, Transportation, & Utilities	70.5	71.8	71.9	1.4	0.1
Wholesale Trade	15.8	15.7	15.8	0.0	0.1
Retail Trade	43.5	45.0	45.0	1.5	0.0
Food & Beverage Stores	6.5	6.7	6.7	0.2	0.0
General Merchandise Stores	8.5	8.7	8.7	0.2	0.0
Transportation, Warehousing, & Utilities	11.2	11.1	11.1	-0.1	0.0
Information	6.0	5.9	5.9	-0.1	0.0
Financial Activities	17.3	17.4	17.5	0.2	0.1
Professional & Business Services	39.8	39.8	39.9	0.1	0.1
Administrative, Support, & Waste Management	20.1	20.0	20.2	0.1	0.2
Educational & Health Services	40.4	40.7	40.8	0.4	0.1
Leisure & Hospitality	35.4	36.0	36.3	0.9	0.3
Accommodation & Food Services	31.8	32.2	32.4	0.6	0.2
Food Services & Drinking Places	28.9	29.4	29.6	0.7	0.2
Other Services	13.9	13.9	14.0	0.1	0.1
Government	52.1	52.9	52.4	0.3	-0.5
Federal Government	5.1	5.0	5.0	-0.1	0.0
State Government	18.9	19.7	19.2	0.3	-0.5
Local Government	28.1	28.2	28.2	0.1	0.0

Total nonfarm employment increased by 500 jobs from April to May. There were seasonal increases in administrative/support/waste management (up 900 jobs); leisure/hospitality (up 700 jobs), which includes an increase of 400 jobs in accommodation/food services; natural resources/mining/construction (up 500 jobs); wholesale trade (up 300 jobs); and durable goods manufacturing, health care/social assistance, and retail trade (all up 200 jobs).

This was partially offset by decreases in state government (down 1,500 jobs), professional/scientific/technical services (down 600 jobs), local government (down 300 jobs), and federal government (down 200 jobs).



HOURS AND EARNINGS OF PRODUCTION WORKERS MEMPHIS MSA

Industry	Average Weekly Earnings			Average Weekly Hours			Average Hourly Earnings		
	May 2006	Apr. 2007	May 2007	May 2006	Apr. 2007	May 2007	May 2006	Apr. 2007	May 2007
Manufacturing	\$577.53	\$639.92	\$608.69	40.7	42.1	41.1	\$14.19	\$15.20	\$14.81
Durable Goods Manufacturing	\$501.40	\$540.38	\$521.83	38.1	39.3	37.3	\$13.16	\$13.75	\$13.99
Nondurable Goods Manufacturing	\$658.16	\$737.86	\$693.06	43.5	44.8	44.8	\$15.13	\$16.47	\$15.47

ESTIMATED NONFARM EMPLOYMENT (in thousands)

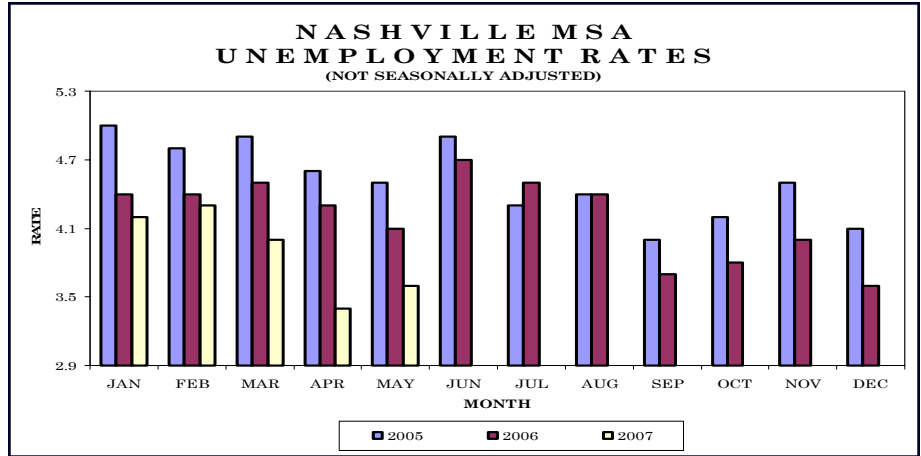
Industry	May 2006	Revised	Preliminary	Net Change	
		April 2007	May 2007	May 2006	Apr. 2007
Total Nonfarm	635.0	643.4	643.9	8.9	0.5
Total Private	548.1	554.6	557.1	9.0	2.5
Goods-Producing	82.4	81.8	82.5	0.1	0.7
Natural Resources, Mining, & Construction	27.8	27.8	28.3	0.5	0.5
Manufacturing	54.6	54.0	54.2	-0.4	0.2
Durable Goods Manufacturing	27.2	27.0	27.2	0.0	0.2
Nondurable Goods Manufacturing	27.4	27.0	27.0	-0.4	0.0
Service-Providing	552.6	561.6	561.4	8.8	-0.2
Trade, Transportation, & Utilities	173.9	174.9	175.5	1.6	0.6
Wholesale Trade	37.8	37.7	38.0	0.2	0.3
Retail Trade	71.8	72.9	73.1	1.3	0.2
Food & Beverage Stores	9.7	9.5	9.5	-0.2	0.0
General Merchandise Stores	14.2	13.9	14.0	-0.2	0.1
Transportation, Warehousing, & Utilities	64.3	64.3	64.4	0.1	0.1
Truck Transportation	15.7	16.0	16.0	0.3	0.0
Warehousing & Storage	8.0	8.0	8.0	0.0	0.0
Information	7.5	7.4	7.3	-0.2	-0.1
Financial Activities	32.7	32.5	32.6	-0.1	0.1
Professional & Business Services	80.0	82.0	82.3	2.3	0.3
Professional, Scientific, & Technical Services	19.5	20.0	19.4	-0.1	-0.6
Management of Companies & Enterprises	4.8	4.7	4.7	-0.1	0.0
Administrative, Support, & Waste Management	55.7	57.3	58.2	2.5	0.9
Educational & Health Services	75.2	77.6	77.8	2.6	0.2
Health Care & Social Assistance	65.0	66.2	66.4	1.4	0.2
Hospitals	24.5	25.0	25.1	0.6	0.1
Leisure & Hospitality	72.0	73.6	74.3	2.3	0.7
Accommodation & Food Services	64.2	65.8	66.2	2.0	0.4
Food Services & Drinking Places	44.9	46.1	46.4	1.5	0.3
Other Services	24.4	24.8	24.8	0.4	0.0
Government	86.9	88.8	86.8	-0.1	-2.0
Federal Government	14.5	14.5	14.3	-0.2	-0.2
State Government	14.6	16.6	15.1	0.5	-1.5
Local Government	57.8	57.7	57.4	-0.4	-0.3



Nashville MSA — Cannon, Cheatham, Davidson, Dickson, Hickman, Macon, Robertson, Rutherford, Smith, Sumner, Trousdale, Williamson, Wilson

Total nonfarm employment increased by 1,500 jobs from April to May. There were seasonal increases in natural resources/mining/construction and administrative/support/waste management (both up 700 jobs); accommodation/food services (up 500 jobs), which includes an increase of 400 jobs in food services/drinking places; arts/entertainment/recreation and health care/social assistance (both up 400 jobs); and food/beverage stores and financial activities (both up 200 jobs).

This was partially offset by declines in state government (down 800 jobs), professional/scientific/technical services (down 500 jobs), educational services (down 300 jobs), and local government and transportation equipment manufacturing (both down 200 jobs).



HOURS AND EARNINGS OF PRODUCTION WORKERS NASHVILLE MSA

Industry	Average Weekly Earnings			Average Weekly Hours			Average Hourly Earnings		
	May 2006	Apr. 2007	May 2007	May 2006	2007	2007	May 2006	Apr. 2007	May 2007
Manufacturing	\$582.67	\$591.60	\$592.12	39.8	40.3	39.9	\$14.64	\$14.68	\$14.84
Durable Goods Manufacturing	\$601.95	\$618.82	\$616.41	40.7	41.2	40.5	\$14.79	\$15.02	\$15.22
Nondurable Goods Manufacturing	\$544.16	\$538.86	\$541.56	38.0	38.6	38.6	\$14.32	\$13.96	\$14.03

ESTIMATED NONFARM EMPLOYMENT (in thousands)

Industry	May 2006	Revised April 2007	Preliminary May 2007	Net Change	
				May 2006	Apr. 2007
Total Nonfarm	750.5	759.9	761.4	10.9	1.5
Total Private	651.4	658.2	660.7	9.3	2.5
Goods-Producing	122.9	124.4	124.8	1.9	0.4
Natural Resources, Mining, & Construction	39.1	41.4	42.1	3.0	0.7
Manufacturing	83.8	83.0	82.7	-1.1	-0.3
Durable Goods Manufacturing	57.6	57.0	56.8	-0.8	-0.2
Computer & Electronic Product Manufacturing	4.3	4.3	4.3	0.0	0.0
Electrical Equipment & Appliance Manufacturing	7.4	7.6	7.6	0.2	0.0
Transportation Equipment Manufacturing	19.8	19.5	19.3	-0.5	-0.2
Nondurable Goods Manufacturing	26.2	26.0	25.9	-0.3	-0.1
Service-Providing	627.6	635.5	636.6	9.0	1.1
Trade, Transportation, & Utilities	153.5	154.6	155.0	1.5	0.4
Wholesale Trade	36.6	37.1	37.2	0.6	0.1
Retail Trade	86.0	86.1	86.3	0.3	0.2
Food & Beverage Stores	11.8	12.3	12.5	0.7	0.2
General Merchandise Stores	17.1	17.3	17.3	0.2	0.0
Transportation, Warehousing, & Utilities	30.9	31.4	31.5	0.6	0.1
Information	19.7	19.8	19.9	0.2	0.1
Financial Activities	46.2	46.1	46.3	0.1	0.2
Finance & Insurance	35.2	35.2	35.3	0.1	0.1
Real Estate, Rental, & Leasing	11.0	10.9	11.0	0.0	0.1
Professional & Business Services	96.7	98.0	98.3	1.6	0.3
Professional, Scientific, & Technical Services	35.6	37.8	37.3	1.7	-0.5
Management of Companies & Enterprises	7.6	7.7	7.8	0.2	0.1
Administrative, Support, & Waste Management	53.5	52.5	53.2	-0.3	0.7
Educational & Health Services	104.0	105.9	106.0	2.0	0.1
Educational Services	23.0	23.9	23.6	0.6	-0.3
Health Care & Social Assistance	81.0	82.0	82.4	1.4	0.4
Hospitals	27.7	27.9	27.9	0.2	0.0
Leisure & Hospitality	77.9	78.0	78.9	1.0	0.9
Arts, Entertainment, & Recreation	10.2	10.0	10.4	0.2	0.4
Accommodation & Food Services	67.7	68.0	68.5	0.8	0.5
Accommodation	12.3	12.5	12.6	0.3	0.1
Food Services & Drinking Places	55.4	55.5	55.9	0.5	0.4
Other Services	30.5	31.4	31.5	1.0	0.1
Government	99.1	101.7	100.7	1.6	-1.0
Federal Government	11.4	11.6	11.6	0.2	0.0
State Government	29.0	30.6	29.8	0.8	-0.8
Local Government	58.7	59.5	59.3	0.6	-0.2

Nonfarm Employment (Smaller MSAs)

	Clarksville, TN-KY MSA		Cleveland, TN MSA		Jackson, TN MSA	
	April 2007	May 2007	April 2007	May 2007	April 2007	May 2007
	Revised	Prelim.	Revised	Prelim.	Revised	Prelim.
Total Nonfarm	84,300	84,000	42,800	42,900	62,500	62,900
Total Private	66,000	66,000	37,300	37,500	50,600	50,800
Goods-Producing	16,800	16,500	11,400	11,400	14,500	14,600
Service-Providing	67,500	67,500	31,400	31,500	48,000	48,300
Private Service-Providing	49,200	49,500	25,900	26,100	36,100	36,200
Natural Resources/Construction	3,100	3,200	1,900	1,900	3,600	3,600
Manufacturing	13,700	13,300	9,500	9,500	10,900	11,000
Durable Goods	9,100	9,000	5,200	5,200	7,100	7,200
Nondurable Goods	4,600	4,300	4,300	4,300	3,800	3,800
Trade/Transportation/Utilities	16,200	16,200	7,700	7,700	12,900	12,900
Wholesale Trade	1,900	1,900	1,800	1,800	2,900	2,900
Retail Trade	11,600	11,600	4,700	4,700	7,500	7,500
General Merchandise Stores	3,600	3,600	NA	NA	NA	NA
Transportation/Warehousing/Utilities	2,700	2,700	1,200	1,200	2,500	2,500
Information	1,200	1,200	300	300	700	700
Financial Activities	2,700	2,700	1,700	1,700	1,900	1,900
Professional/Business Services	8,200	8,200	4,000	4,000	4,600	4,600
Educational/Health Services	9,500	9,500	5,700	5,700	8,400	8,400
Leisure/Hospitality	8,300	8,500	4,000	4,200	5,400	5,500
Other Services	3,100	3,200	2,500	2,500	2,200	2,200
Government	18,300	18,000	5,500	5,400	11,900	12,100
Federal Government	5,500	5,500	300	300	500	500
State Government	3,500	3,100	800	700	1,800	1,800
Local Government	9,300	9,400	4,400	4,400	9,600	9,800

	Johnson City, TN MSA		Kingsport/Bristol, TN-VA MSA		Morristown, TN MSA	
	April 2007	May 2007	April 2007	May 2007	April 2007	May 2007
	Revised	Prelim.	Revised	Prelim.	Revised	Prelim.
Total Nonfarm	81,900	82,200	123,500	124,200	51,800	52,000
Total Private	64,900	65,500	107,100	107,700	44,600	44,900
Goods-Producing	13,700	13,800	32,800	33,000	17,400	17,500
Service-Providing	68,200	68,400	90,700	91,200	34,400	34,500
Private Service-Providing	51,200	51,700	74,300	74,700	27,200	27,400
Natural Resources/Construction	3,500	3,600	8,000	8,200	2,100	2,200
Manufacturing	10,200	10,200	24,800	24,800	15,300	15,300
Durable Goods	NA	NA	11,600	11,600	10,100	10,000
Nondurable Goods	NA	NA	13,200	13,200	NA	NA
Trade/Transportation/Utilities	14,100	14,300	25,200	25,300	10,400	10,400
Wholesale Trade	3,000	3,000	5,400	5,400	2,100	2,100
Retail Trade	9,800	10,000	15,200	15,300	5,500	5,500
General Merchandise Stores	NA	NA	NA	NA	NA	NA
Transportation/Warehousing/Utilities	1,300	1,300	4,600	4,600	2,800	2,800
Information	2,300	2,300	2,500	2,500	700	700
Financial Activities	4,900	4,900	4,200	4,200	2,000	2,000
Professional/Business Services	7,600	7,700	8,800	8,900	3,600	3,600
Educational/Health Services	11,500	11,500	17,000	17,000	5,400	5,400
Leisure/Hospitality	8,200	8,400	12,300	12,500	3,400	3,500
Other Services	2,600	2,600	4,300	4,300	1,700	1,800
Government	17,000	16,700	16,400	16,500	7,200	7,100
Federal Government	2,300	2,300	1,200	1,200	400	400
State Government	6,600	6,300	2,400	2,400	1,500	1,500
Local Government	8,100	8,100	12,800	12,900	5,300	5,200

Clarksville MSA is Montgomery County, Stewart County, Christian County, KY, & Trigg County, KY. **Cleveland MSA** is Bradley & Polk counties. **Jackson MSA** is Chester & Madison counties. **Johnson City MSA** is Carter, Unicoi, & Washington counties. **Kingsport-Bristol MSA** is Hawkins County, Sullivan County, Scott County, VA, Washington County, VA, & Bristol City, VA. **Morristown MSA** is Grainger, Hamblen, & Jefferson counties.

Tennessee Department of Labor & Workforce Development
 Employment Security Division, Research & Statistics
 11th Floor, Davy Crockett Tower
 500 James Robertson Parkway
 Nashville, TN 37245

**FIRST CLASS MAIL
 POSTAGE & FEES PAID
 BUREAU OF
 LABOR STATISTICS
 PERMIT NO. G-738**

Phone: 615-741-2284
 Fax: 615-532-9434
 E-mail: wayne.meisels@state.tn.us



The Tennessee Department of Labor and Workforce Development is committed to principles of equal opportunity, equal access, and affirmative action. Auxiliary aids and services are available upon request to individuals with disabilities. Tennessee Department of Labor and Workforce Development; Authorization 337607; This public document was promulgated for electronic use only.

We're on the Web
www.tennessee.gov/labor-wfd
 Check out The Source at
www.tennessee.gov/labor-wfd/source



The Tennessee Department of Labor and Workforce Development is an equal opportunity employer/program. Auxiliary aids and services are available upon request. TTY: 615-532-2879 or 1-800-848-0299

U.S. Consumer Price Index May 2007

Group	Index	Percent Change	
		Yearly	Monthly
U.S. City Average			
All Items (1982-84=100) / All Urban Consumers	207.9	2.7	0.6
All Items (1982-84=100) / Wage Earners & Clerical Workers	203.7	2.8	0.8
South			
All Items (1982-84=100) / All Urban Consumers	200.8	2.7	0.6
All Items (1982-84=100) / Wage Earners & Clerical Workers	198.2	2.7	0.7

