

# The Labor Market Report

The Tennessee Department of Labor and Workforce Development

Phil Bredesen,  
Governor

James G. Neeley,  
Commissioner

March 2010 Data

## Special Points of Interest:

- The per capita personal income declined for the first time in 60 years
- Tennessee Historical Civilian Labor Force Series, 1980 to Present
- County Unemployment Rates
- Civilian Labor Force Summary
- State Unemployment Insurance Activities

## Inside This Issue:

Chattanooga MSA	7
Knoxville MSA	8
Memphis MSA	9
Nashville MSA	10
Smaller MSAs	11
Consumer Price Index	12

## Per Capita Income Greatest Decline Since 1949

In Tennessee, the per capita personal income in 2009 was \$34,089, down 2.1 percent from the previous year. This per capita income amount ranked 36th in the United States and was 87 percent of the national average, \$39,138. The national average decreased by 2.6 percent from 2008 to 2009. This is the first decline in per capita personal income in 60 years.

**Per capita personal income** is the annual total personal income of residents in each state divided by the population. The Bureau of Economic Analysis (BEA) uses the Census Bureau's annual midyear population estimates. Personal income is derived by summing the net earnings by place of residence, any rental income, dividend and interest income, and transfer payments. Personal income is measured prior to deduction of state and federal income taxes as well as other personal taxes. All income is reported in current dollars. In simpler terms, it is the total income on the front page of your 1040 tax form. This

data can be influenced by large growth (or decline) in population, natural disasters (i.e. flooding or hurricanes), commuting populations (those that primarily work in other counties), and state and local taxes.

### Per Capita Income

In 2009, the states with the highest per capita income were Connecticut (\$54,397), New Jersey (\$50,313), Massachusetts (\$49,875), Maryland (\$48,285), and New York (\$46,957). The poorest states (measured by per capita income) were Mississippi (\$30,103), Utah (\$30,875), Idaho (\$31,632), South Carolina (\$31,799), Kentucky (\$31,883), and Arkansas (\$31,946). Four of the lowest six states are in the Southeast region, while the states with the highest per capita incomes are from New England and the Mideast regions.

From 2008 until 2009, only three states had an increase in per capita income. They were West Virginia (up 1.8 percent), Maine (up 1 percent), and Maryland (up 0.3 percent). Hawaii and Kentucky both had lowest percentage declines (-0.2 percent).

States with the largest declines, by percentage, were Wyoming (-5.9 percent), Nevada (-5.8 percent), South Dakota (-4.4 percent), Idaho (-4.4 percent), Arizona (-4.1 percent), Colorado (-3.9 percent), New York (-3.8 percent), and Utah (-3.7 percent).

### Population Growth

While the per capita income declined throughout the United States, the population increased by 0.9 percent (up 2,632,000 persons). Tennessee had the same growth percent as the nation (up 0.9 percent) as the state population increased by 56,000 residents. The largest population growth in the country was in Wyoming and Utah (both up 2.1 percent), Texas (up 2 percent), and Colorado (up 1.8 percent). Only Michigan (down 32,000 persons), Maine (down 2,000 persons), and Rhode Island (down 1,000 persons) had declining populations. Vermont increased by only 1,000 residents.

For more information about national and state per capita personal income, go to the BEA Web site at [www.bea.gov](http://www.bea.gov).

# Per Capita Personal Income and Population by State, 2008-2009

	Per capita personal income (dollars)						Population (in thousands)		
	2008 r	2009 p	Rank in the U.S.		Percent change	Ranking of chg	2008 r	2009 p	Percent change
			2008 r	2009 p					
<b>United States</b>	<b>\$40,166</b>	<b>\$39,138</b>	—	—	<b>-2.6 %</b>	—	<b>304,375</b>	<b>307,007</b>	<b>0.9 %</b>
Alabama	33,655	33,096	42	41	-1.7	18	4,677	4,709	0.7 %
Alaska	43,922	42,603	8	9	-3.0	36	688	698	1.5
Arizona	34,339	32,935	41	43	-4.1	46	6,499	6,596	1.5
Arkansas	32,257	31,946	46	45	-1.0	12	2,868	2,889	0.8
California	43,852	42,325	9	10	-3.5	41	36,580	36,962	1.0
Colorado	43,021	41,344	11	15	-3.9	45	4,935	5,025	1.8
Connecticut	56,245	54,397	1	1	-3.3	39	3,503	3,518	0.4
Delaware	40,375	39,817	18	17	-1.4	15	876	885	1.0
District of Columbia	66,316	66,000	--	--	-0.5	--	590	600	1.6
Florida	39,064	37,780	22	24	-3.3	40	18,424	18,538	0.6
Georgia	\$34,849	\$33,786	37	39	-3.1 %	37	9,698	9,829	1.4 %
Hawaii	42,078	42,009	15	11	-0.2	4	1,287	1,295	0.6
Idaho	32,994	31,632	44	48	-4.1	47	1,528	1,546	1.2
Illinois	42,540	41,411	14	14	-2.7	33	12,843	12,910	0.5
Indiana	34,543	33,725	40	40	-2.4	30	6,388	6,423	0.5
Iowa	37,509	36,751	28	27	-2.0	24	2,994	3,008	0.5
Kansas	38,886	37,916	23	23	-2.5	31	2,797	2,819	0.8
Kentucky	31,936	31,883	48	46	-0.2	5	4,288	4,314	0.6
Louisiana	36,091	35,507	32	32	-1.6	17	4,452	4,492	0.9
Maine	36,368	36,745	29	28	1.0	2	1,320	1,318	-0.1
Maryland	\$48,164	\$48,285	6	4	0.3 %	3	5,659	5,699	0.7 %
Massachusetts	50,897	49,875	3	3	-2.0	23	6,544	6,594	0.8
Michigan	34,953	34,025	36	37	-2.7	34	10,002	9,970	-0.3
Minnesota	42,953	41,552	12	13	-3.3	38	5,231	5,266	0.7
Mississippi	30,383	30,103	50	50	-0.9	11	2,940	2,952	0.4
Missouri	36,356	35,676	31	30	-1.9	20	5,956	5,988	0.5
Montana	34,622	34,004	39	38	-1.8	19	968	975	0.7
Nebraska	39,182	38,081	21	22	-2.8	35	1,782	1,797	0.8
Nevada	40,936	38,578	17	20	-5.8	49	2,616	2,643	1.0
New Hampshire	43,423	42,831	10	8	-1.4	14	1,322	1,325	0.2
New Jersey	\$51,473	\$50,313	2	2	-2.3 %	27	8,663	8,708	0.5 %
New Mexico	33,389	32,992	43	42	-1.2	13	1,987	2,010	1.2
New York	48,809	46,957	4	5	-3.8	44	19,468	19,541	0.4
North Carolina	35,249	34,453	35	35	-2.3	28	9,247	9,381	1.4
North Dakota	39,874	39,530	19	19	-0.9	10	641	647	0.8
Ohio	35,889	35,381	34	33	-1.4	16	11,528	11,543	0.1
Oklahoma	35,969	35,268	33	34	-1.9	22	3,644	3,687	1.2
Oregon	36,365	35,667	30	31	-1.9	21	3,783	3,826	1.1
Pennsylvania	39,762	39,578	20	18	-0.5	7	12,566	12,605	0.3
Rhode Island	41,261	41,003	16	16	-0.6	9	1,054	1,053	0.0
South Carolina	\$32,495	\$31,799	45	47	-2.1 %	26	4,503	4,561	1.3 %
South Dakota	38,644	36,935	25	25	-4.4	48	805	812	1.0
<b>Tennessee</b>	<b>34,833</b>	<b>34,089</b>	<b>38</b>	<b>36</b>	<b>-2.1</b>	<b>25</b>	<b>6,240</b>	<b>6,296</b>	<b>0.9</b>
Texas	37,809	36,484	26	29	-3.5	42	24,304	24,782	2.0
Utah	32,050	30,875	47	49	-3.7	43	2,727	2,785	2.1
Vermont	38,700	38,503	24	21	-0.5	8	621	622	0.1
Virginia	44,075	43,874	7	7	-0.5	6	7,795	7,883	1.1
Washington	42,747	41,751	13	12	-2.3	29	6,566	6,664	1.5
West Virginia	31,634	32,219	49	44	1.8	1	1,815	1,820	0.3
Wisconsin	37,770	36,822	27	26	-2.5	32	5,628	5,655	0.5
Wyoming	48,580	45,705	5	6	-5.9	50	533	544	2.1

<sup>r</sup> revised      <sup>p</sup> preliminary

Sources: U.S. Bureau of Economic Analysis and Bureau of the Census

# Statewide

## HISTORICAL CIVILIAN LABOR FORCE

## UNEMPLOYMENT RATES BY COUNTY\*

(NUMBERS IN THOUSANDS)

MONTHLY DATA NOT SEASONALLY ADJUSTED

Year and Month	Civilian Labor Force							Unemployed Number	Rate (%)
	Total	Employment	Employed						
			Total	Nonfarm Employment					
			**Manu- facturing	**Trade	**Services				
1980	2,071.6	1,920.1	1,746.6	502.1	379.7	291.0	151.5	7.3 %	
1981	2,123.1	1,927.6	1,775.4	506.9	379.9	304.4	195.5	9.2	
1982	2,141.2	1,891.5	1,703.0	466.7	380.5	313.1	249.7	11.7	
1983	2,188.2	1,932.4	1,719.0	468.6	389.9	323.4	255.8	11.7	
1984	2,233.5	2,026.4	1,812.0	497.1	413.3	344.3	207.1	9.3	
1985	2,255.7	2,070.0	1,867.8	492.4	435.3	360.2	185.7	8.2	
1986	2,291.3	2,110.7	1,929.8	490.5	452.1	384.7	180.6	7.9	
1987	2,324.1	2,166.5	2,011.6	497.4	477.2	408.9	157.6	6.8	
1988	2,333.6	2,197.2	2,092.1	511.9	495.6	440.3	136.4	5.8	
1989	2,364.9	2,241.3	2,167.2	524.5	508.4	467.2	123.6	5.2	
1990	2,401.1	2,269.0	2,193.2	493.4	379.1	611.0	132.1	5.5	
1991	2,425.4	2,266.0	2,183.6	480.3	373.0	626.7	159.4	6.6	
1992	2,479.5	2,316.7	2,245.0	492.8	374.1	664.8	162.8	6.6	
1993	2,543.3	2,391.6	2,328.5	502.8	382.5	709.8	151.7	6.0	
1994	2,645.7	2,511.1	2,423.0	513.8	398.4	751.4	134.6	5.1	
1995	2,718.0	2,574.0	2,498.9	518.0	412.6	795.0	144.0	5.3	
1996	2,758.4	2,611.0	2,533.3	501.5	420.9	814.3	147.4	5.3	
1997	2,788.3	2,640.0	2,584.0	498.0	430.5	849.7	148.3	5.3	
1998	2,811.7	2,685.2	2,638.4	498.6	437.1	875.7	126.5	4.5	
1999	2,838.7	2,722.1	2,685.3	494.7	443.6	900.8	116.6	4.1	
2000	2,871.5	2,756.5	2,728.9	488.1	447.5	930.9	115.0	4.0	
2001	2,863.5	2,728.5	2,688.3	454.2	446.6	921.5	135.0	4.7	
2002	2,867.1	2,715.0	2,664.4	428.5	438.7	938.0	152.1	5.3	
2003	2,896.1	2,731.4	2,667.5	414.1	440.8	950.3	164.8	5.7	
2004	2,906.9	2,748.6	2,706.1	411.8	447.5	978.7	158.3	5.4	
2005	2,938.9	2,775.6	2,743.1	408.8	454.6	1,005.6	163.3	5.6	
2006	3,008.3	2,854.0	2,783.1	400.1	460.6	1,030.4	154.4	5.1	
2007	3,021.9	2,873.6	2,797.4	380.0	463.5	1,052.8	148.3	4.9	
2008	3,050.3	2,846.1	2,774.8	361.0	457.0	1,058.2	204.2	6.7	
2009	3,020.0	2,703.0	2,618.9	309.1	428.1	1,025.1	317.0	10.5	
<b>2010</b>									
January	2,980.7	2,639.6	2,550.2	298.5	420.4	998.3	341.1	11.4 %	
February (r)	2,978.1	2,648.4	2,560.1	299.7	419.7	1,007.0	329.6	11.1	
March (p)	3,000.2	2,675.8	2,584.1	301.8	424.3	1,019.7	324.4	10.8	
April									
May									
June									
July									
August									
September									
October									
November									
December									

(r)=revised

\*\*These industries not comparable to industry employment data before

(p)=preliminary

1990 because of changes to NAICS coding system.

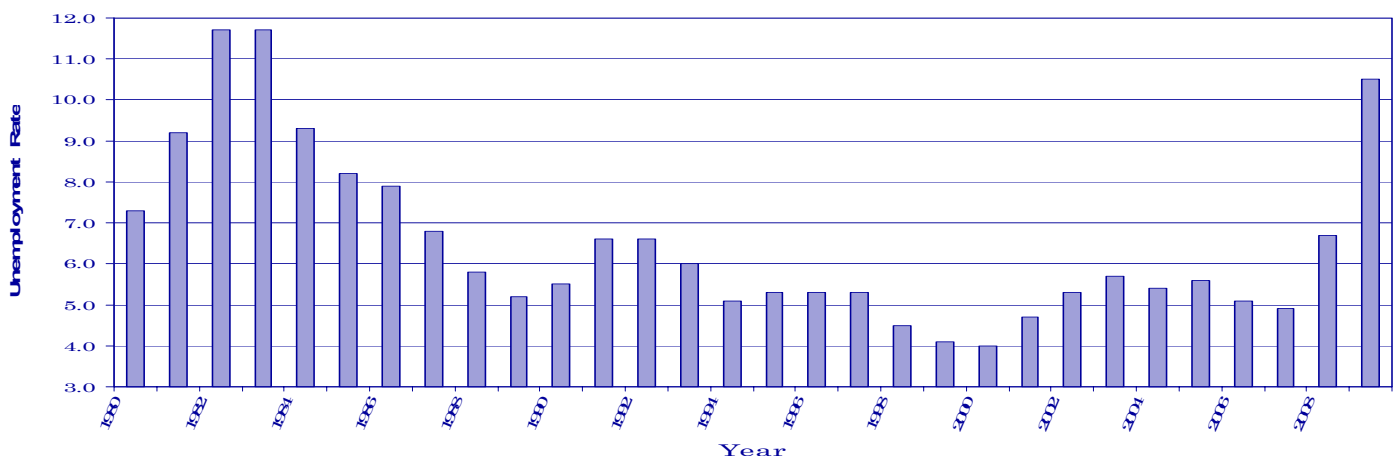
Trade = Wholesale and Retail Trade

Services = Professional/Business Services, Educational/Health Services, Leisure/Hospitality, and Other Services.

County	Mar	Mar	County	Mar	Mar
	2009	2010		2009	2010
Anderson	10.0	9.9	Lauderdale	18.8	17.2
Bedford	12.2	12.8	Lawrence	15.9	16.3
Benton	14.0	13.9	Lewis	17.4	16.4
Bledsoe	14.0	14.6	Lincoln	7.6	7.4
Blount	10.5	10.2	Loudon	9.8	9.3
Bradley	10.1	9.7	Macon	12.8	11.5
Campbell	13.4	13.5	Madison	10.4	11.3
Cannon	11.8	10.1	Marion	11.8	11.6
Carroll	15.1	17.4	Marshall	18.0	18.4
Carter	10.8	11.0	Maury	16.3	16.0
Cheatham	9.4	9.9	McMinn	14.8	13.9
Chester	10.9	11.0	McNairy	15.9	13.4
Claiborne	13.1	12.6	Meigs	15.5	14.4
Clay	16.5	14.2	Monroe	18.9	15.5
Coke	16.7	15.7	Montgomery	8.9	9.2
Coffee	11.2	10.7	Moore	8.8	10.4
Crockett	13.3	14.9	Morgan	11.7	11.9
Cumberland	12.0	12.2	Obion	10.4	10.1
Davidson	8.5	9.1	Overton	14.6	12.6
Decatur	12.3	14.4	Perry	27.6	17.3
DeKalb	11.4	11.0	Pickett	17.6	18.2
Dickson	12.6	11.5	Polk	14.3	12.9
Dyer	13.4	13.3	Putnam	9.7	10.2
Fayette	11.0	11.4	Rhea	14.0	14.2
Fentress	14.3	12.9	Roane	9.1	8.8
Franklin	11.2	10.8	Robertson	11.1	10.0
Gibson	14.0	15.3	Rutherford	9.7	10.0
Giles	16.1	14.9	Scott	19.5	19.8
Grainger	15.0	15.5	Sequatchie	12.1	12.9
Greene	16.9	15.3	Sevier	14.3	13.9
Grundy	14.8	13.2	Shelby	9.7	10.6
Hamblen	13.2	12.0	Smith	15.1	13.9
Hamilton	8.8	9.4	Stewart	12.2	14.0
Hancock	14.0	17.3	Sullivan	8.5	9.7
Hardeman	12.4	14.1	Sumner	10.1	10.0
Hardin	13.6	12.3	Tipton	13.0	12.2
Hawkins	11.6	11.0	Trousdale	13.3	12.3
Haywood	14.5	17.6	Unicoi	12.1	12.6
Henderson	17.1	18.1	Union	11.1	10.5
Henry	13.9	13.6	Van Buren	14.9	14.5
Hickman	13.3	13.1	Warren	15.2	12.7
Houston	11.9	11.0	Washington	8.7	9.2
Humphreys	14.1	12.0	Wayne	13.6	13.6
Jackson	16.1	13.2	Weakley	11.7	11.8
Jefferson	13.8	14.2	White	15.1	13.8
Johnson	13.0	14.8	Williamson	7.7	8.1
Knox	7.9	8.2	Wilson	9.3	9.6
Lake	10.7	11.8			

\*Data Not Seasonally Adjusted

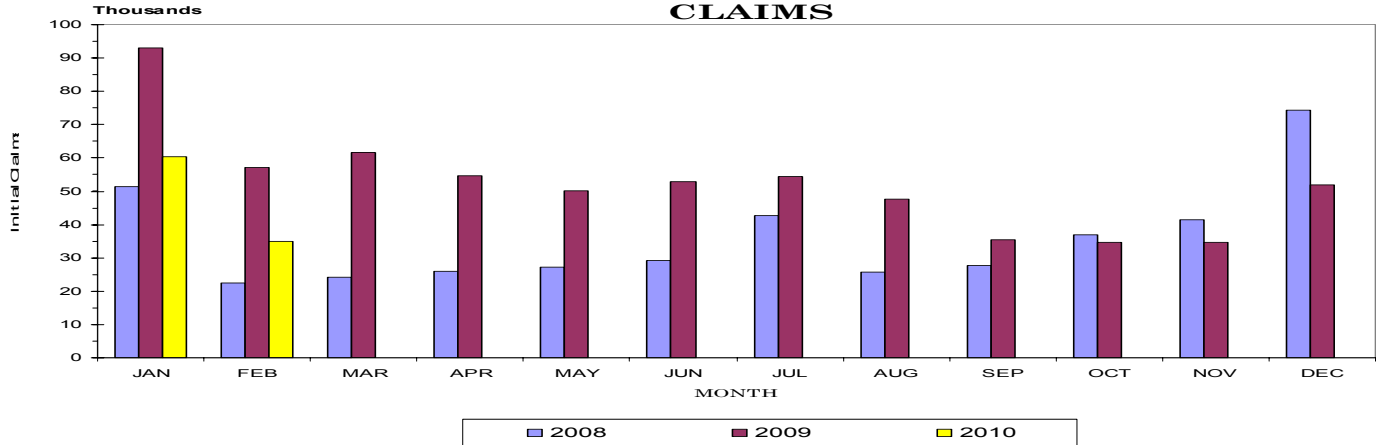
Unemployment Rates 1980-2009



# Statewide

## UNEMPLOYMENT INSURANCE ACTIVITIES (MOST RECENT AVAILABLE)

### MONTHLY INITIAL CLAIMS



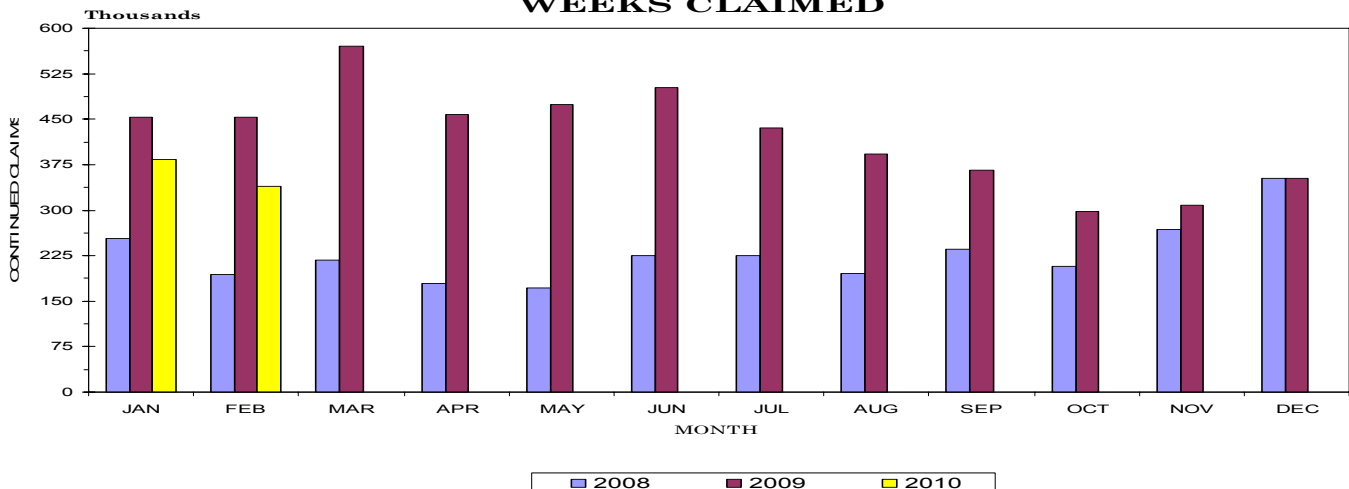
## BENEFIT PROGRAMS (MOST RECENT AVAILABLE)

STATE BENEFIT PROGRAM				FEDERAL BENEFIT PROGRAMS			
CLAIMS	Feb. 2009	Jan. 2010	Feb. 2010	FORMER FEDERAL EMPLOYEES	Feb. 2009	Jan. 2010	Feb. 2010
Initial Claims	57,157	60,380	34,873	Benefits Paid	\$379,020	\$397,836	\$323,494
Continued Weeks Claimed	452,731	383,961	339,441	Benefit Weeks Claimed	1,283	1,156	1,157
Nonmonetary Determinations	7,346	6,137	6,719	Initial Claims	92	119	88
Appeals Decisions	1,959	2,685	3,021	Continued Weeks Claimed	1,311	1,398	1,135
Lower Authority	1,681	2,380	2,642	Appeals Decisions	5	9	12
Higher Authority	278	305	379				
BENEFITS				FORMER MILITARY PERSONNEL			
Amount Paid	\$99,050,240	\$77,210,924	\$71,981,204	Benefits Paid	\$489,006	\$544,439	\$483,643
Benefit Weeks Paid	445,385	318,533	324,901	Benefit Weeks Claimed	1,485	1,541	1,506
Average Weekly Benefit Amount	\$225	\$221	\$219	Initial Claims	143	121	134
First Payments	30,370	30,472	19,176	Continued Weeks Claimed	1,482	1,732	1,566
Final Payments	8,136	10,045	9,364	Appeals Decisions	8	6	7
Average Weeks Duration	13	18	19				
Trust Fund Balance*	\$269,724,621	\$85,913,213	\$62,153,025				

\*Trust Fund includes balance of \$70.55 million of Reed Act funds.

## CONTINUED WEEKS CLAIMED (MOST RECENT AVAILABLE)

### MONTHLY CONTINUED WEEKS CLAIMED



# Statewide

## ESTIMATED NONFARM EMPLOYMENT (in thousands)

Industry	March 2009	Revised February 2010	Preliminary March 2010	Net Change	
				Mar. 2009 Mar. 2010	Feb. 2010 Mar. 2010
Total Nonfarm	2,634.6	2,560.1	<b>2,584.1</b>	-50.5	24.0
Total Private	2,200.1	2,128.5	<b>2,151.6</b>	-48.5	23.1
Goods Producing	430.9	395.2	<b>402.5</b>	-28.4	7.3
Mining, Logging, & Construction	111.4	95.5	<b>100.7</b>	-10.7	5.2
Manufacturing	319.5	299.7	<b>301.8</b>	-17.7	2.1
Durable Goods Manufacturing	189.7	173.0	<b>174.2</b>	-15.5	1.2
Wood Product Manufacturing	11.4	10.6	<b>10.8</b>	-0.6	0.2
Nonmetallic Mineral Product Manufacturing	12.0	10.5	<b>10.6</b>	-1.4	0.1
Primary Metal Manufacturing	9.7	8.9	<b>8.9</b>	-0.8	0.0
Fabricated Metal Product Manufacturing	34.8	34.0	<b>34.1</b>	-0.7	0.1
Machinery Manufacturing	27.2	24.8	<b>25.3</b>	-1.9	0.5
Computer & Electronic Product Manufacturing	6.7	5.5	<b>5.5</b>	-1.2	0.0
Electrical Equipment & Appliance Manufacturing	18.7	17.5	<b>17.5</b>	-1.2	0.0
Transportation Equipment Manufacturing	42.4	37.0	<b>37.4</b>	-5.0	0.4
Furniture & Related Product Manufacturing	11.5	9.8	<b>9.7</b>	-1.8	-0.1
Miscellaneous Manufacturing	15.3	14.4	<b>14.4</b>	-0.9	0.0
Nondurable Goods Manufacturing	129.8	126.7	<b>127.6</b>	-2.2	0.9
Textile Mills, Products, & Apparel	12.6	11.9	<b>11.9</b>	-0.7	0.0
Food Manufacturing	32.2	32.2	<b>32.3</b>	0.1	0.1
Beverage & Tobacco Product Manufacturing	5.1	5.0	<b>5.0</b>	-0.1	0.0
Paper Manufacturing	16.1	15.5	<b>15.5</b>	-0.6	0.0
Printing & Related Support Activities	14.2	12.1	<b>12.1</b>	-2.1	0.0
Chemical Manufacturing	26.3	25.1	<b>25.1</b>	-1.2	0.0
Plastics & Rubber Products Manufacturing	21.5	19.6	<b>19.8</b>	-1.7	0.2
Plastics Product Manufacturing	11.5	10.7	<b>10.9</b>	-0.6	0.2
Rubber Product Manufacturing	10.0	8.9	<b>8.9</b>	-1.1	0.0
Service Providing	2,203.7	2,164.9	<b>2,181.6</b>	-22.1	16.7
Trade, Transportation, & Utilities	561.8	541.8	<b>546.6</b>	-15.2	4.8
Wholesale Trade	123.0	116.7	<b>118.0</b>	-5.0	1.3
Merchant Wholesalers, Durable Goods	62.1	58.5	<b>59.3</b>	-2.8	0.8
Merchant Wholesalers, Nondurable Goods	44.1	41.3	<b>41.5</b>	-2.6	0.2
Wholesale Electronic Markets	16.8	16.9	<b>17.2</b>	0.4	0.3
Retail Trade	305.1	303.0	<b>306.3</b>	1.2	3.3
Motor Vehicle & Parts Dealers	37.2	34.8	<b>34.9</b>	-2.3	0.1
Furniture & Home Furnishings Stores	8.1	7.4	<b>7.4</b>	-0.7	0.0
Building Material, Garden Equipment, & Supplies	25.5	24.7	<b>25.8</b>	0.3	1.1
Food & Beverage Stores	49.1	49.7	<b>49.5</b>	0.4	-0.2
Health & Personal Care Stores	22.9	23.0	<b>22.9</b>	0.0	-0.1
Gasoline Stations	22.0	21.4	<b>21.3</b>	-0.7	-0.1
Clothing & Clothing Accessories Stores	24.9	23.9	<b>24.0</b>	-0.9	0.1
Sporting Goods, Hobby, Book, & Music Stores	11.3	10.6	<b>10.6</b>	-0.7	0.0
General Merchandise Stores	70.9	70.6	<b>71.8</b>	0.9	1.2
Miscellaneous Store Retailers	15.3	15.1	<b>15.0</b>	-0.3	-0.1
Nonstore Retailers	8.9	8.6	<b>8.5</b>	-0.4	-0.1
Transportation, Warehousing, & Utilities	133.7	122.1	<b>122.3</b>	-11.4	0.2
Utilities	3.6	3.6	<b>3.6</b>	0.0	0.0
Transportation & Warehousing	130.1	118.5	<b>118.7</b>	-11.4	0.2
Truck Transportation	52.6	47.6	<b>48.0</b>	-4.6	0.4
Information	48.3	47.1	<b>46.4</b>	-1.9	-0.7
Financial Activities	141.1	137.4	<b>136.4</b>	-4.7	-1.0
Finance & Insurance	108.2	103.6	<b>102.8</b>	-5.4	-0.8
Real Estate, Rental, & Leasing	32.9	33.8	<b>33.6</b>	0.7	-0.2
Professional & Business Services	294.1	288.6	<b>293.0</b>	-1.1	4.4
Professional, Scientific, & Technical Services	109.7	105.6	<b>105.2</b>	-4.5	-0.4
Management of Companies & Enterprises	26.3	26.4	<b>26.5</b>	0.2	0.1
Administrative, Support, & Waste Management	158.1	156.6	<b>161.3</b>	3.2	4.7
Educational & Health Services	362.3	373.1	<b>374.6</b>	12.3	1.5
Educational Services	44.7	47.3	<b>47.5</b>	2.8	0.2
Health Care & Social Assistance	317.6	325.8	<b>327.1</b>	9.5	1.3
Ambulatory Health Care Services	120.0	124.7	<b>125.6</b>	5.6	0.9
Hospitals	101.0	103.0	<b>102.8</b>	1.8	-0.2
Nursing & Residential Care Facilities	55.0	57.0	<b>57.5</b>	2.5	0.5
Social Assistance	41.6	41.1	<b>41.2</b>	-0.4	0.1
Leisure & Hospitality	259.1	245.7	<b>252.3</b>	-6.8	6.6
Arts, Entertainment, & Recreation	26.4	24.5	<b>26.0</b>	-0.4	1.5
Accommodation & Food Services	232.7	221.2	<b>226.3</b>	-6.4	5.1
Accommodation	31.5	30.0	<b>30.4</b>	-1.1	0.4
Food Services & Drinking Places	201.2	191.2	<b>195.9</b>	-5.3	4.7
Other Services	102.5	99.6	<b>99.8</b>	-2.7	0.2
Government	434.5	431.6	<b>432.5</b>	-2.0	0.9
Federal Government	49.4	49.8	<b>49.8</b>	0.4	0.0
State Government	99.2	99.5	<b>99.5</b>	0.3	0.0
State Government Educational Services	50.2	48.2	<b>48.3</b>	-1.9	0.1
Local Government	285.9	282.3	<b>283.2</b>	-2.7	0.9
Local Government Educational Services	151.1	147.1	<b>147.8</b>	-3.3	0.7
State and Local Government	385.1	381.8	<b>382.7</b>	-2.4	0.9

## NONFARM EMPLOYMENT AND LABOR FORCE IN TENNESSEE

Total nonfarm employment decreased by 50,500 jobs from March 2009 to March 2010. During this period, there were large seasonal decreases in transportation/warehousing (down 11,400 jobs), which includes a drop of 5,500 jobs in truck transportation; mining/logging/construction (down 10,700 jobs); accommodation/food services (down 6,400 jobs), which includes a drop of 5,300 jobs in food services/drinking places; finance/insurance (down 5,400 jobs); wholesale trade (down 5,000 jobs), which includes decreases of 2,800 jobs in durable goods wholesalers and 2,600 jobs in nondurable goods wholesalers; transportation equipment manufacturing (down 5,000 jobs); professional/scientific/technical services (down 4,500 jobs); local government educational services (down 3,300 jobs); and other services (down 2,700 jobs). This was partially offset by increases in health care/social assistance (up 9,500 jobs), which includes increases of 5,600 jobs in ambulatory health care services and 2,500 jobs in nursing/residential care facilities; administrative/support/waste management (up 3,200 jobs); educational services (up 2,800 jobs); and retail trade (up 1,200 jobs).

During March, nonfarm employment increased by 24,000 jobs. The largest seasonal increases were in mining/logging/construction (up 5,200 jobs); accommodation/food services (up 5,100 jobs), which includes an increase of 4,700 jobs in food services/drinking places; administrative/support/waste management (up 4,700 jobs); retail trade (up 3,300 jobs), which includes increases of 1,200 jobs in general merchandise stores and 1,100 jobs in building material/garden supply stores; educational/health services (up 1,500 jobs), which includes an increase of 1,300 jobs in health care/social assistance; and wholesale trade (up 1,300 jobs). This was partially offset by a decrease in financial activities (down 1,000 jobs), which includes a drop of 800 jobs in finance/insurance.

Tennessee's seasonally adjusted estimated unemployment rate for March 2010 was 10.6 percent, down 0.1 percent from the February 2010 rate. This is the 35th consecutive month that the current rate is greater than or equal to the national average.

The United States' unemployment rate was 9.7 percent in March 2010. In March 2009, the national unemployment rate was 8.6 percent, and the state's unemployment rate was 10.1 percent.

Across Tennessee, the unemployment rate decreased in 85 counties, increased in seven counties, and remained the same in three counties. There were 14 counties with an unemployment rate less than 10 percent and no counties had a rate above 20 percent. The lowest rate occurred in Lincoln County at 7.4 percent, down 0.6 percent from the previous month. The highest rate was Scott County's 19.8 percent, up from 18.4 percent in February 2010.

The data from all the nonfarm employment estimates tables include all full- and part-time nonfarm wage and salary employees who worked during or received pay for any part of the pay period that includes the 12th of the month. This is a count of jobs by place of work. Agricultural workers, proprietors, self-employed persons, workers in private households, and unpaid family workers are excluded. These numbers may not add due to rounding. Data is based on the 2009 benchmark.

# CIVILIAN LABOR FORCE

## CIVILIAN LABOR FORCE SUMMARY

	March 2009				February 2009				March 2010			
	Labor Force	Employment	Unemployed	Rate	Labor Force	Employment	Unemployed	Rate	Labor Force	Employment	Unemployed	Rate
<b>Seasonally Adjusted</b>												
U.S.	154,164,000	140,854,000	13,310,000	8.6	153,512,000	138,641,000	14,871,000	9.7	153,910,000	138,905,000	15,005,000	9.7
TENNESSEE	3,041,700	2,733,700	308,000	10.1	3,000,600	2,680,000	320,600	10.7	3,010,300	2,691,300	319,100	10.6
<b>Not Seasonally Adjusted</b>												
U.S.	153,728,000	139,833,000	13,895,000	9.0	153,194,000	137,203,000	15,991,000	10.4	153,660,000	137,983,000	15,678,000	10.2
TENNESSEE	3,017,800	2,696,900	320,900	10.6	2,978,100	2,648,400	329,600	11.1	3,000,200	2,675,800	324,400	10.8
<b>Metropolitan Statistical Areas</b>												
Chattanooga	258,260	233,320	24,940	9.7	252,720	228,080	24,640	9.7	254,960	230,760	24,200	9.5
Clarksville	109,270	98,100	11,170	10.2	110,420	98,120	12,300	11.1	111,460	99,760	11,700	10.5
Cleveland	53,760	48,040	5,710	10.6	53,260	47,730	5,540	10.4	53,730	48,300	5,420	10.1
Jackson	55,930	50,080	5,850	10.5	54,830	48,570	6,270	11.4	55,410	49,170	6,230	11.2
Johnson City	99,840	90,240	9,600	9.6	98,290	88,070	10,220	10.4	98,910	88,980	9,930	10.0
Kingsport-Bristol	147,830	134,370	13,460	9.1	144,720	130,030	14,690	10.2	146,010	131,650	14,360	9.8
Knoxville	357,510	326,160	31,350	8.8	354,680	322,480	32,200	9.1	356,640	325,040	31,590	8.9
Memphis	609,810	551,090	58,720	9.6	599,870	534,410	65,460	10.9	600,710	536,960	63,760	10.6
Morristown	64,450	55,610	8,840	13.7	62,270	53,740	8,530	13.7	63,050	54,590	8,450	13.4
Nashville	795,750	721,470	74,280	9.3	784,590	708,720	75,870	9.7	789,860	714,450	75,410	9.5
<b>Micropolitan Statistical Areas</b>												
Brownsville	9,080	7,770	1,310	14.5	9,310	7,630	1,680	18.0	9,490	7,820	1,670	17.6
Cookeville	50,730	44,980	5,750	11.3	50,320	44,700	5,620	11.2	50,490	44,970	5,520	10.9
Crossville	22,660	19,950	2,710	12.0	22,770	19,820	2,960	13.0	22,740	19,970	2,770	12.2
Dyersburg	17,660	15,290	2,360	13.4	17,120	14,810	2,310	13.5	17,150	14,870	2,270	13.3
Greeneville	29,610	24,610	5,000	16.9	29,380	24,730	4,650	15.8	29,700	25,150	4,550	15.3
Humboldt	21,350	18,360	2,990	14.0	21,270	17,920	3,350	15.8	21,520	18,220	3,300	15.3
Lawrenceburg	16,750	14,090	2,660	15.9	16,500	13,700	2,800	17.0	16,560	13,860	2,700	16.3
Lewisburg	12,750	10,460	2,290	18.0	12,180	9,860	2,320	19.0	12,330	10,060	2,270	18.4
Martin	15,680	13,850	1,830	11.7	15,560	13,640	1,920	12.3	15,760	13,890	1,870	11.8
McMinnville	17,150	14,540	2,610	15.2	16,750	14,510	2,240	13.4	17,040	14,880	2,160	12.7
Paris	13,500	11,620	1,880	13.9	13,450	11,540	1,920	14.2	13,630	11,770	1,860	13.6
Shelbyville	22,220	19,520	2,700	12.2	21,870	19,020	2,850	13.0	22,150	19,310	2,840	12.8
Tullahoma	47,730	42,470	5,270	11.0	47,360	42,160	5,200	11.0	47,820	42,690	5,130	10.7
Union City	18,040	16,140	1,900	10.5	17,800	15,800	2,000	11.2	17,860	15,980	1,880	10.5

## HOURS AND EARNINGS OF PRODUCTION WORKERS

	AVERAGE WEEKLY EARNINGS			AVERAGE HOURLY EARNINGS			AVERAGE WEEKLY HOURS		
	Mar.	Feb.	Mar.	Mar.	Feb.	Mar.	Mar.	Feb.	Mar.
	2009	2010	2010	2009	2010	2010	2009	2010	2010
Manufacturing	\$579.57	\$589.33	\$609.00	\$14.71	\$14.66	\$15.00	39.4	40.2	40.6
Durable Goods Manufacturing	\$582.73	\$586.18	\$612.00	\$14.79	\$14.84	\$15.30	39.4	39.5	40.0
Nondurable Goods Manufacturing	\$574.85	\$593.48	\$607.15	\$14.59	\$14.44	\$14.63	39.4	41.1	41.5

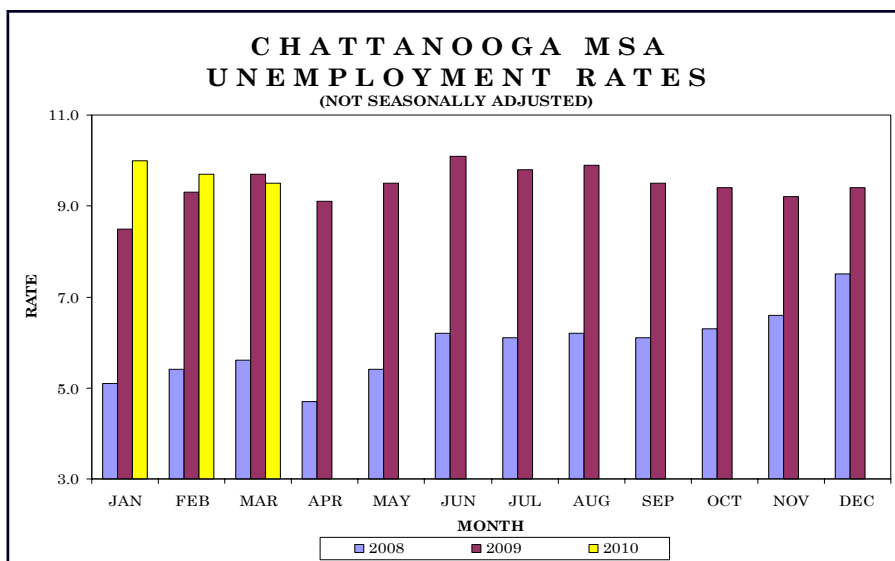
**\*\*ALL EMPLOYEE HOURS AND EARNINGS**

	AVERAGE WEEKLY EARNINGS			AVERAGE HOURLY EARNINGS			AVERAGE WEEKLY HOURS		
	Jan.	Dec.	Jan.	Jan.	Dec.	Jan.	Jan.	Dec.	Jan.
	2009	2010	2010	2009	2010	2010	2009	2010	2010
Total Private	\$691.68	\$683.90	\$690.32	\$19.65	\$19.54	\$19.78	35.2	35.0	34.9
Goods Producing	\$791.69	\$860.81	\$864.03	\$20.51	\$21.15	\$21.44	38.6	40.7	40.3
Mining, Logging and Construction	\$719.99	\$732.01	\$710.35	\$19.78	\$20.62	\$20.71	36.4	35.5	34.3
Manufacturing	\$815.08	\$902.70	\$912.79	\$20.74	\$21.29	\$21.63	39.3	42.4	42.2
Private Service Providing	\$668.05	\$643.67	\$653.69	\$19.42	\$19.10	\$19.34	34.4	33.7	33.8
Trade, Transportation, and Utilities	\$681.87	\$630.48	\$647.92	\$19.10	\$17.76	\$18.20	35.7	35.5	35.6
Information	\$857.46	\$832.32	\$855.93	\$23.05	\$23.12	\$23.45	37.2	36.0	36.5
Financial Activities	\$820.88	\$781.14	\$785.90	\$21.89	\$21.46	\$21.71	37.5	36.4	36.2
Professional and Business Services	\$845.75	\$818.64	\$833.45	\$22.92	\$22.74	\$22.96	36.9	36.0	36.3
Education and Health Services	\$702.46	\$710.06	\$706.29	\$20.48	\$21.07	\$21.21	34.3	33.7	33.3
Leisure and Hospitality	\$303.64	\$303.87	\$313.10	\$11.33	\$11.87	\$11.86	26.8	25.6	26.4
Other Services	\$552.42	\$536.58	\$534.65	\$16.49	\$16.26	\$16.35	33.5	33.0	32.7

\*\*This data is one month behind

Total nonfarm employment increased by 2,300 jobs from February 2010 to March 2010. There were seasonal increases in retail trade (up 700 jobs), leisure/hospitality (up 600 jobs), and mining/logging/construction (up 400 jobs).

During the past 12 months, nonfarm jobs decreased by 3,700. During that time, goods-producing jobs dropped by 1,300 jobs and service-providing jobs declined by 2,400.



## CIVILIAN LABOR FORCE SUMMARY

	March 2009				February 2009				March 2010			
	Labor Force	Employment	Unemployed	Rate	Labor Force	Employment	Unemployed	Rate	Labor Force	Employment	Unemployed	Rate
Athens Micro	23,650	20,140	3,510	14.8	23,080	19,790	3,290	14.3	23,240	20,000	3,240	13.9
Chattanooga City	78,650	71,180	7,460	9.5	78,050	69,950	8,100	10.4	78,820	70,720	8,100	10.3

## ESTIMATED NONFARM EMPLOYMENT (in thousands)

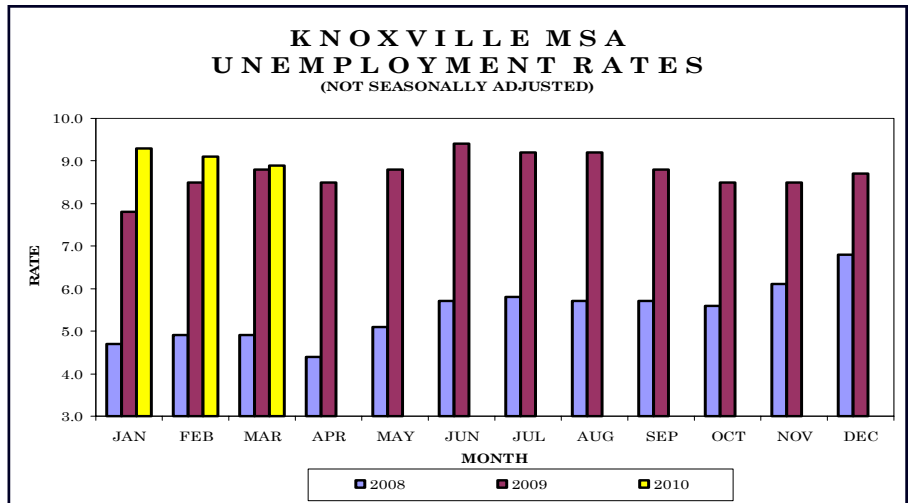
Industry	March 2009	Revised February 2009	Preliminary March 2010	Net Change	
				Mar. 2009 Mar. 2010	Feb. 2009 Mar. 2010
Total Nonfarm	229.8	223.8	226.1	-3.7	2.3
Total Private	194.5	187.9	190.1	-4.4	2.2
Goods Producing	37.7	35.9	36.4	-1.3	0.5
Mining, Logging, & Construction	8.8	8.5	8.9	0.1	0.4
Manufacturing	28.9	27.4	27.5	-1.4	0.1
Durable Goods Manufacturing	13.0	12.1	12.1	-0.9	0.0
Nondurable Goods Manufacturing	15.9	15.3	15.4	-0.5	0.1
Service Providing	192.1	187.9	189.7	-2.4	1.8
Trade, Transportation, & Utilities	49.4	46.2	47.0	-2.4	0.8
Wholesale Trade	8.4	7.9	7.9	-0.5	0.0
Retail Trade	24.4	24.2	24.9	0.5	0.7
Transportation, Warehousing, & Utilities	16.6	14.1	14.2	-2.4	0.1
Information	3.8	3.6	3.6	-0.2	0.0
Financial Activities	18.2	17.8	17.8	-0.4	0.0
Professional & Business Services	22.0	21.0	21.1	-0.9	0.1
Educational & Health Services	30.4	31.3	31.4	1.0	0.1
Leisure & Hospitality	22.3	21.8	22.4	0.1	0.6
Other Services	10.7	10.3	10.4	-0.3	0.1
Government	35.3	35.9	36.0	0.7	0.1
Federal Government	5.9	5.8	5.8	-0.1	0.0
State Government	6.1	6.7	6.7	0.6	0.0
Local Government	23.3	23.4	23.5	0.2	0.1
State and Local Government	29.4	30.1	30.2	0.8	0.1



# Knoxville MSA - Anderson, Blount, Knox, Loudon, Union

Total nonfarm employment increased by 2,400 jobs from February 2010 to March 2010. There were seasonal increases in mining/logging/construction, retail trade, and leisure/hospitality (each up 600 jobs); and educational/health services and professional/business services (both up 200 jobs).

During the past 12 months, nonfarm employment decreased by 4,300 jobs. During that time, goods-producing jobs decreased by 3,400, while service-providing jobs declined by 900.



## CIVILIAN LABOR FORCE SUMMARY

	March 2009				February 2009				March 2010			
	Labor Force	Employment	Unemployed	Rate	Labor Force	Employment	Unemployed	Rate	Labor Force	Employment	Unemployed	Rate
Harriman Micro	26,800	24,360	2,440	9.1	27,270	24,760	2,510	9.2	27,410	25,000	2,400	8.8
LaFollette Micro	16,740	14,500	2,240	13.4	16,650	14,360	2,290	13.8	16,700	14,440	2,260	13.5
Newport Micro	16,530	13,760	2,760	16.7	16,240	13,600	2,630	16.2	16,440	13,860	2,570	15.7
Sevierville Micro	47,160	40,400	6,760	14.3	46,360	39,250	7,110	15.3	48,260	41,540	6,720	13.9
Knoxville City	92,570	84,120	8,450	9.1	92,110	83,180	8,930	9.7	92,770	83,840	8,930	9.6
Maryville City	13,030	11,710	1,320	10.2	12,870	11,570	1,300	10.1	12,940	11,670	1,280	9.9
Oak Ridge City	13,200	12,110	1,100	8.3	13,170	12,010	1,160	8.8	13,220	12,110	1,110	8.4

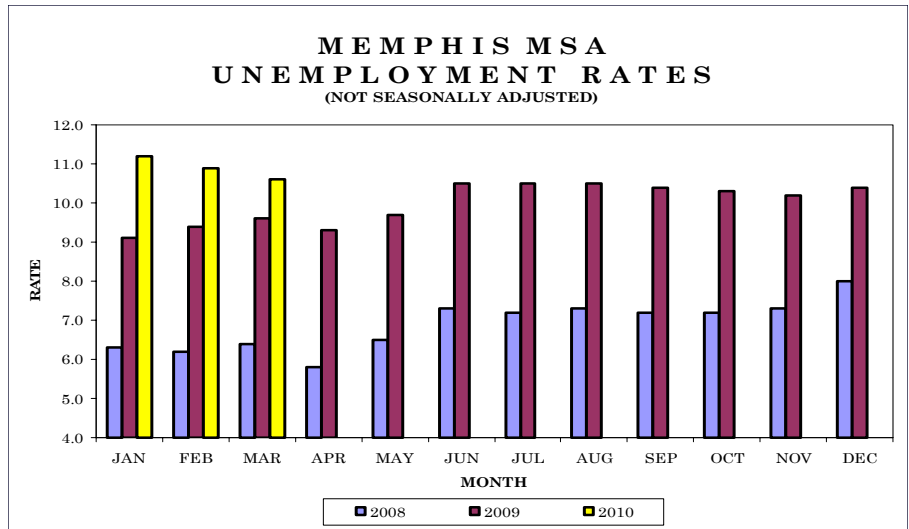
## ESTIMATED NONFARM EMPLOYMENT (in thousands)

Industry	March 2009	Revised February 2009	Preliminary March 2010	Net Change	
				Mar. 2009 - Mar. 2010	Feb. 2009 - Mar. 2010
Total Nonfarm	321.8	315.1	317.5	-4.3	2.4
Total Private	270.6	264.3	266.8	-3.8	2.5
Goods Producing	47.3	43.1	43.9	-3.4	0.8
Mining, Logging, & Construction	16.1	14.5	15.1	-1.0	0.6
Manufacturing	31.2	28.6	28.8	-2.4	0.2
Durable Goods Manufacturing	23.4	21.3	21.4	-2.0	0.1
Nondurable Goods Manufacturing	7.8	7.3	7.4	-0.4	0.1
Service Providing	274.5	272.0	273.6	-0.9	1.6
Trade, Transportation, & Utilities	67.1	66.0	66.7	-0.4	0.7
Wholesale Trade	16.3	15.6	15.6	-0.7	0.0
Retail Trade	40.7	41.2	41.8	1.1	0.6
Transportation, Warehousing, & Utilities	10.1	9.2	9.3	-0.8	0.1
Information	5.5	5.3	5.3	-0.2	0.0
Financial Activities	17.4	17.0	17.0	-0.4	0.0
Professional & Business Services	41.5	41.7	41.9	0.4	0.2
Educational & Health Services	43.3	44.4	44.6	1.3	0.2
Leisure & Hospitality	33.9	32.5	33.1	-0.8	0.6
Other Services	14.6	14.3	14.3	-0.3	0.0
Government	51.2	50.8	50.7	-0.5	-0.1
Federal Government	5.1	5.1	5.1	0.0	0.0
State Government	17.0	16.6	16.6	-0.4	0.0
Local Government	29.1	29.1	29.0	-0.1	-0.1
State and Local Government	46.1	45.7	45.6	-0.5	-0.1



Total nonfarm employment increased by 1,600 jobs from February 2010 to March 2010. There were seasonal increases in retail trade (up 1,000 jobs); wholesale trade and leisure/hospitality (both up 300 jobs); and nondurable goods manufacturing and educational/health services (both up 200 jobs). This was partially offset by declines in other services (down 400 jobs); professional/business services (down 300 jobs), which includes a drop of 200 jobs in administrative/support/waste management; and local government (down 200 jobs).

During the past 12 months, nonfarm employment decreased by 21,200 jobs. During that time, goods-producing jobs decreased by 3,900, while service-providing jobs declined by 17,300.



## CIVILIAN LABOR FORCE SUMMARY

	March 2009				February 2009				March 2010			
	Labor Force	Employment	Unemployed	Rate	Labor Force	Employment	Unemployed	Rate	Labor Force	Employment	Unemployed	Rate
Bartlett City	25,620	23,710	1,920	7.5	25,200	23,030	2,170	8.6	25,270	23,140	2,130	8.4
Collierville City	19,770	18,480	1,280	6.5	19,390	17,950	1,440	7.4	19,410	18,040	1,380	7.1
Germantown City	19,110	17,950	1,160	6.1	18,780	17,430	1,350	7.2	18,780	17,520	1,270	6.7
Memphis City	306,450	273,950	32,500	10.6	300,850	266,090	34,760	11.6	301,790	267,350	34,430	11.4

## ESTIMATED NONFARM EMPLOYMENT (in thousands)

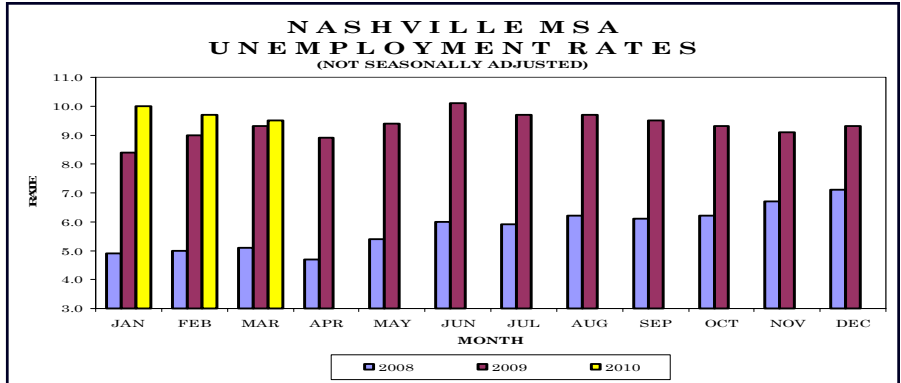
Industry	March 2009	Revised	Preliminary	Net Change	
		February 2009	March 2010	Mar. 2009	Feb. 2009
	2009	2009	2010	Mar. 2010	Mar. 2010
Total Nonfarm	605.3	582.5	584.1	-21.2	1.6
Total Private	516.1	494.4	496.1	-20.0	1.7
Goods Producing	68.8	64.5	64.9	-3.9	0.4
Mining, Logging, & Construction	21.5	20.0	20.1	-1.4	0.1
Manufacturing	47.3	44.5	44.8	-2.5	0.3
Durable Goods Manufacturing	23.5	21.5	21.6	-1.9	0.1
Nondurable Goods Manufacturing	23.8	23.0	23.2	-0.6	0.2
Service Providing	536.5	518.0	519.2	-17.3	1.2
Trade, Transportation, & Utilities	162.3	154.2	155.5	-6.8	1.3
Wholesale Trade	33.3	31.5	31.8	-1.5	0.3
Retail Trade	65.8	62.8	63.8	-2.0	1.0
Transportation, Warehousing, & Utilities	63.2	59.9	59.9	-3.3	0.0
Information	7.0	6.7	6.8	-0.2	0.1
Financial Activities	31.1	30.1	30.2	-0.9	0.1
Professional & Business Services	76.8	71.7	71.4	-5.4	-0.3
Professional, Scientific, & Technical Services	19.0	18.1	18.0	-1.0	-0.1
Management of Companies & Enterprises	5.5	5.6	5.6	0.1	0.0
Administrative, Support, & Waste Management	52.3	48.0	47.8	-4.5	-0.2
Educational & Health Services	79.5	80.5	80.7	1.2	0.2
Leisure & Hospitality	65.7	62.6	62.9	-2.8	0.3
Other Services	24.9	24.1	23.7	-1.2	-0.4
Government	89.2	88.1	88.0	-1.2	-0.1
Federal Government	14.8	15.0	15.1	0.3	0.1
State Government	14.7	14.9	14.9	0.2	0.0
Local Government	59.7	58.2	58.0	-1.7	-0.2
State and Local Government	74.4	73.1	72.9	-1.5	-0.2



## Nashville MSA — Cannon, Cheatham, Davidson, Dickson, Hickman, Macon, Robertson, Rutherford, Smith, Sumner, Trousdale, Williamson, Wilson

Total nonfarm employment increased by 4,900 jobs from February 2010 to March 2010. There were seasonal increases in administrative/support/waste management (up 1,800 jobs), mining/logging/construction (up 1,000 jobs), leisure/hospitality (up 700 jobs), retail trade (up 600 jobs), other services (up 500 jobs), wholesale trade (up 300 jobs), and local government (up 200 jobs). This was partially offset by a decline in financial activities (down 300 jobs).

During the past 12 months, nonfarm employment decreased by 14,700 jobs. During that time, goods-producing jobs decreased by 9,000, while service-providing jobs declined by 5,700.



### CIVILIAN LABOR FORCE SUMMARY

	March 2009				February 2009				March 2010			
	Labor Force	Employment	Unemployed	Rate	Labor Force	Employment	Unemployed	Rate	Labor Force	Employment	Unemployed	Rate
Columbia Micro	37,260	31,190	6,070	16.3	35,170	29,500	5,670	16.1	35,450	29,790	5,660	16.0
Brentwood City	16,990	15,940	1,050	6.2	16,840	15,650	1,190	7.1	16,900	15,780	1,120	6.6
Columbia City	15,090	12,500	2,590	17.1	14,360	11,830	2,530	17.6	14,510	11,940	2,570	17.7
Franklin City	30,880	28,500	2,380	7.7	30,560	27,990	2,570	8.4	30,720	28,220	2,500	8.1
Gallatin City	13,560	11,920	1,630	12.0	13,240	11,710	1,530	11.6	13,290	11,810	1,480	11.1
Hendersonville	25,290	23,150	2,140	8.4	24,930	22,740	2,190	8.8	25,070	22,930	2,140	8.5
LaVergne City	17,120	15,320	1,800	10.5	16,820	15,050	1,770	10.5	16,930	15,170	1,760	10.4
Murfreesboro City	53,680	48,440	5,240	9.8	53,060	47,590	5,470	10.3	53,560	47,970	5,580	10.4
Nashville City	318,950	291,890	27,070	8.5	315,820	286,730	29,090	9.2	317,960	289,050	28,910	9.1
Smyrna City	20,780	18,580	2,200	10.6	20,380	18,250	2,130	10.5	20,560	18,400	2,160	10.5
Spring Hill City	13,430	11,920	1,510	11.2	12,880	11,550	1,330	10.3	12,980	11,650	1,330	10.2

### ESTIMATED NONFARM EMPLOYMENT (in thousands)

Industry	March 2009	Revised	Preliminary	Net Change	
		February 2009	March 2010	Mar. 2009	Feb. 2009
	2009	2009	2010	Mar. 2010	Mar. 2010
Total Nonfarm	728.1	708.5	713.4	-14.7	4.9
Total Private	621.1	601.1	605.9	-15.2	4.8
Goods Producing	96.6	86.4	87.6	-9.0	1.2
Mining, Logging, & Construction	32.4	27.6	28.6	-3.8	1.0
Manufacturing	64.2	58.8	59.0	-5.2	0.2
Durable Goods Manufacturing	41.5	37.2	37.3	-4.2	0.1
Nondurable Goods Manufacturing	22.7	21.6	21.7	-1.0	0.1
Service Providing	631.5	622.1	625.8	-5.7	3.7
Trade, Transportation, & Utilities	147.2	141.9	142.9	-4.3	1.0
Wholesale Trade	36.5	35.3	35.6	-0.9	0.3
Retail Trade	82.1	80.6	81.2	-0.9	0.6
Transportation, Warehousing, & Utilities	28.6	26.0	26.1	-2.5	0.1
Information	20.6	19.9	19.8	-0.8	-0.1
Financial Activities	44.5	44.0	43.7	-0.8	-0.3
Professional & Business Services	92.2	89.8	91.6	-0.6	1.8
Professional, Scientific, & Technical Services	38.4	37.0	37.0	-1.4	0.0
Management of Companies & Enterprises	9.9	10.0	10.0	0.1	0.0
Administrative, Support, & Waste Management	43.9	42.8	44.6	0.7	1.8
Educational & Health Services	114.0	116.2	116.2	2.2	0.0
Educational Services	21.4	21.7	21.7	0.3	0.0
Health Care & Social Assistance	92.6	94.5	94.5	1.9	0.0
Leisure & Hospitality	75.5	73.3	74.0	-1.5	0.7
Other Services	30.5	29.6	30.1	-0.4	0.5
Government	107.0	107.4	107.5	0.5	0.1
Federal Government	12.3	12.4	12.3	0.0	-0.1
State Government	30.1	30.1	30.1	0.0	0.0
Local Government	64.6	64.9	65.1	0.5	0.2
State and Local Government	94.7	95.0	95.2	0.5	0.2

## Nonfarm Employment (Smaller MSAs)

	Clarksville, TN-KY MSA		***Cleveland, TN MSA		Jackson, TN MSA	
	February 2010	March 2010	February 2010	March 2010	February 2010	March 2010
	Revised	Prelim.	Revised	Prelim.	Revised	Prelim.
Total Nonfarm	80,300	81,000	38,200	38,700	56,300	56,800
Total Private	61,000	61,600	32,700	33,300	43,900	44,400
Goods Producing	12,400	12,600	9,500	9,700	10,900	11,000
Mining, Logging, & Construction	2,900	3,000	1,200	1,300	2,400	2,400
Manufacturing	9,500	9,600	8,300	8,400	8,500	8,600
Service Providing	67,900	68,400	28,700	29,000	45,400	45,800
Trade, Transportation, & Utilities	14,800	14,900	6,400	6,500	10,900	11,000
Wholesale Trade	1,900	1,900	800	800	2,600	2,600
Retail Trade	10,700	10,800	4,400	4,500	6,900	7,000
Transportation, Warehousing, & Utilities	2,200	2,200	1,200	1,200	1,400	1,400
Information	1,000	1,000	300	300	700	700
Financial Activities	2,600	2,600	1,500	1,500	1,700	1,700
Professional & Business Services	8,200	8,300	2,800	2,900	3,700	3,800
Educational & Health Services	10,200	10,200	5,900	5,900	8,900	8,900
Leisure & Hospitality	8,600	8,800	3,900	4,000	5,100	5,300
Other Services	3,200	3,200	2,400	2,500	2,000	2,000
Government	19,300	19,400	5,500	5,400	12,400	12,400
Federal Government	6,300	6,400	300	300	500	500
State Government	3,100	3,100	600	600	1,900	1,900
Local Government	9,900	9,900	4,600	4,500	10,000	10,000
State and Local Government	13,000	13,000	5,200	5,100	11,900	11,900

	Johnson City, TN MSA		Kingsport/Bristol, TN-VA MSA		***Morristown, TN MSA	
	February 2010	March 2010	February 2010	March 2010	February 2010	March 2010
	Revised	Prelim.	Revised	Prelim.	Revised	Prelim.
Total Nonfarm	75,600	76,200	114,100	115,200	43,600	44,100
Total Private	58,100	58,800	97,600	98,600	36,600	37,000
Goods Producing	10,300	10,600	26,300	26,700	12,300	12,500
Mining, Logging, & Construction	2,500	2,600	5,900	6,200	1,600	1,700
Manufacturing	7,800	8,000	20,400	20,500	10,700	10,800
Service Providing	65,300	65,600	87,800	88,500	31,300	31,600
Trade, Transportation, & Utilities	12,800	12,900	22,500	22,600	9,800	9,800
Wholesale Trade	2,200	2,300	4,300	4,300	1,800	1,800
Retail Trade	9,500	9,500	14,600	14,700	5,700	5,700
Transportation, Warehousing, & Utilities	1,100	1,100	3,600	3,600	2,300	2,300
Information	2,000	2,000	2,200	2,200	500	500
Financial Activities	4,400	4,400	4,200	4,200	1,200	1,200
Professional & Business Services	6,600	6,700	7,800	7,900	2,900	3,000
Educational & Health Services	12,000	12,000	19,000	19,100	5,600	5,600
Leisure & Hospitality	7,500	7,700	11,400	11,700	3,000	3,100
Other Services	2,500	2,500	4,200	4,200	1,300	1,300
Government	17,500	17,400	16,500	16,600	7,000	7,100
Federal Government	2,700	2,700	1,100	1,100	300	300
State Government	6,500	6,500	2,200	2,200	1,300	1,300
Local Government	8,300	8,200	13,200	13,300	5,400	5,500
State and Local Government	14,800	14,700	15,400	15,500	6,700	6,800

\*\*\* These metro areas had their funding restored by BLS, effective June 2009

**Clarksville MSA** is Montgomery County, Stewart County, Christian County, KY, & Trigg County, KY. **Cleveland MSA** is Bradley & Polk counties. **Jackson MSA** is Chester & Madison counties. **Johnson City MSA** is Carter, Unicoi, & Washington counties. **Kingsport-Bristol MSA** is Hawkins County, Sullivan County, Scott County, VA, Washington County, VA, & Bristol City, VA. **Morristown MSA** is Grainger, Hamblen, & Jefferson counties.

Tennessee Department of Labor & Workforce Development  
 Employment Security Division, Research & Statistics  
 220 French Landing Drive  
 Nashville, TN 37243

FIRST CLASS MAIL  
 POSTAGE & FEES PAID  
 BUREAU OF  
 LABOR STATISTICS  
 PERMIT NO. G-738

Phone: 615-741-2284  
 Fax: 615-532-9434  
 E-mail: wayne.meisels@tn.gov



The Tennessee Department of Labor and Workforce Development is committed to principles of equal opportunity, equal access, and affirmative action. Auxiliary aids and services are available upon request to individuals with disabilities. Tennessee Department of Labor and Workforce Development; Authorization 337607; This public document was promulgated for electronic use only.

We're on the Web  
[www.tennessee.gov/labor-wfd](http://www.tennessee.gov/labor-wfd)  
 Check out The Source at  
[www.sourcetn.org](http://www.sourcetn.org)



The Tennessee Department of Labor and Workforce Development is an equal opportunity employer/program. Auxiliary aids and services are available upon request. TTY: 615-532-2879 or 1-800-848-0299

## U.S. Consumer Price Index March 2010

Group	Index	Percent Change	
		Yearly	Monthly
<b>U.S. City Average</b>			
All Items (1982-84=100) / All Urban Consumers	217.631	2.3	0.4
All Items (1982-84=100) / Wage Earners & Clerical Workers	213.525	3.0	0.5
<b>South</b>			
All Items (1982-84=100) / All Urban Consumers	211.216	2.5	0.6
All Items (1982-84=100) / Wage Earners & Clerical Workers	208.621	3.4	0.6

## TENNESSEE UNEMPLOYMENT RATES

(Seasonally Adjusted)

