

The Labor Market Report

The Tennessee Department of Labor & Workforce Development

Phil Bredesen,
Governor

James G. Neeley,
Commissioner

January 2005 Data

New MSA Definitions and a New Look For the Labor Market Report

Special Points of Interest:

- New MSA definitions and LMR format change
- 2004 Labor Market Report Directory
- Tennessee Historical Civilian Labor Force Series, 1974 to Present
- County Unemployment Rates
- Civilian Labor Force Summary
- State Unemployment Insurance Activities

Chattanooga MSA	7
Knoxville MSA	8
Memphis MSA	9
Nashville MSA	10
Smaller MSAs	11
Consumer Price Index	12

Beginning in 2005, the Department of Labor and Workforce Development will re-release statistics based on new labor market definitions. Every ten years, the U.S. Office of Management and Budget (OMB) redefines statistical areas based on population and commuting patterns from the most recent decennial census.

Metropolitan Statistical Areas (MSAs) have at least one urban area of 50,000 or more population, plus adjacent counties with a high degree of social and economic integration with the core as measured by commuting ties. Micropolitan Statistical Areas, a new definition, have at least one urban cluster of greater than 10,000 but less than 50,000 population, plus adja-

cent counties with a high degree of social and economic integration as measured by commuting ties.

Starting with the January 2005 edition, we are providing information on large MSAs, smaller MSAs, and micropolitan areas.

Pages 7 through 10 include data for the largest MSAs. The presentation of these large MSAs have not changed from last year. On page 11 are the nonagricultural data for the six smaller MSAs. This includes Tri-Cities MSA morphing into two smaller MSAs (Johnson City MSA and Kingsport-Bristol MSA). The new MSA definitions are located on the banner of each large MSA and at the bottom of page 11.

On page 12 is the graph of the unem-

ployment rate that was previously on page 6. Also, the consumer price index has been limited to the U.S. City Average, All Urban Consumers. For detailed CPI data, go to the web site at www.bls.gov/ro4/cpicard.htm.

Page 6 of this publication now includes the labor force and unemployment information for the U.S., the state, the ten MSAs, and the 20 Micropolitan Statistical Areas.

While these data are new, the information is not compatible with the previous month or the previous years. To help with time series studies or to compare with the previous year, we are revising data back to 1990 using these new MSA definitions. Data prior to that is not comparable or compatible.

2004 Labor Market Report Directory

Articles of interest published in last year's issues of The Labor Market Report are listed below. Copies are available upon request by writing to the address on the back of this report or e-mailing us at tnlmi@state.tn.us. Issues of The Labor Market Report for last year may be found on the Internet at <http://www.tennessee.gov/labor-wfd/lmr>.

JANUARY

- The 2003 LMR Directory. Articles published in the 2003 issues of The Labor Market Report.
- What Are Labor Surplus Areas? A list of the Tennessee counties that are eligible labor surplus areas.

FEBRUARY

- The release of An Economic Report to the Governor, prepared by CBER. This shows the short- and long-term financial health of the state.

MARCH

- Annual Average Data, 2002-2003, for Tennessee and Metropolitan Statistical Areas (MSAs). This gives annual labor force and nonagricultural employment data for the prior two years.

APRIL

- Per Capita Personal Income in Tennessee, in metropolitan areas, and by counties in 1999, 2000, 2001, and 2002. This shows the per capita personal income and the percent change for each area.

MAY

- An overview of the Mass Layoff Statistics (MLS) Program. Included are national data for confirmed events by industry and layoff events by reason for separation.

JUNE

- The number of multiple jobholders (moonlighting) in the U.S., by percentage of total employment, in each state and region during 2001 through 2003.

JULY

- Population Estimates for Tennessee and Counties 2001 to 2003. Shows the net population change for each county.

AUGUST

- An overview of the number of union members, by state, in 2002 and 2003. Shows the states with the highest and lowest percentage of union members and those covered by union contracts.

SEPTEMBER

- An overview of the national minimum wage laws from their inception in 1938 until the last changes made in 1997.

OCTOBER

- Commonly used Web sites for statistical information. Also included are America's Job Bank and Job Bank USA, which are online job referrals, as well as wage data and the consumer price index. All online publications from this division are included.

NOVEMBER

- Projected occupational growth from 2002 to 2012. Also included are short-term projections (2004-2006) with a list of Tennessee occupations with favorable outlooks.

DECEMBER

- The ACCRA Cost-of-Living Index for third quarter 2004. This is the cost-of-living in selected U.S. cities as figured by a survey from the nation's Chambers of Commerce Research Associations.

Statewide

HISTORICAL CIVILIAN LABOR FORCE

UNEMPLOYMENT RATES BY COUNTY*

(NUMBERS IN THOUSANDS)

MONTHLY INDUSTRY DATA NOT SEASONALLY ADJUSTED

Year and Month	Civilian Labor Force							Unemployed	
	Total	Employment	Employed						
			Total	**Manu- facturing	**Trade	**Services	Number	Rate (%)	
1974	1,841.0	1,748.0	1,558.2	513.3	321.0	227.6	93.0	5.1 %	
1975	1,836.0	1,683.0	1,505.7	459.0	320.8	229.4	154.0	8.3	
1976	1,866.0	1,754.0	1,575.4	486.1	339.5	240.5	112.0	6.0	
1977	1,941.0	1,819.0	1,648.1	507.5	357.2	254.5	122.0	6.3	
1978	1,966.0	1,852.0	1,737.0	526.0	379.1	270.7	114.0	5.8	
1979	2,039.0	1,921.0	1,777.3	524.7	388.7	285.4	118.0	5.8	
1980	2,080.0	1,928.0	1,746.6	502.1	379.7	291.0	152.0	7.3	
1981	2,116.0	1,924.0	1,775.4	506.9	379.9	304.4	192.0	9.1	
1982	2,129.0	1,877.0	1,703.0	466.7	380.5	313.1	252.0	11.8	
1983	2,180.0	1,930.0	1,719.0	468.6	389.9	323.4	250.0	11.5	
1984	2,220.0	2,030.0	1,812.0	497.1	413.3	344.3	190.0	8.6	
1985	2,253.0	2,073.0	1,867.8	492.4	435.3	360.2	180.0	8.0	
1986	2,290.0	2,106.0	1,929.8	490.5	452.1	384.7	184.0	8.0	
1987	2,334.0	2,180.0	2,011.6	497.4	477.2	408.9	154.0	6.6	
1988	2,338.0	2,203.0	2,092.1	511.9	495.6	440.3	135.0	5.8	
1989	2,368.0	2,247.0	2,167.2	524.5	508.4	467.2	121.0	5.1	
1990	2,387.3	2,261.5	2,193.2	493.4	379.1	611.0	125.9	5.3	
1991	2,421.0	2,258.1	2,183.6	480.3	373.0	626.7	162.9	6.7	
1992	2,455.5	2,297.8	2,245.0	492.8	374.1	664.8	157.7	6.4	
1993	2,500.5	2,356.7	2,328.5	502.8	382.5	709.8	143.8	5.7	
1994	2,664.6	2,537.1	2,423.0	513.8	398.4	751.4	127.5	4.8	
1995	2,700.8	2,560.6	2,498.9	518.0	412.6	795.0	140.1	5.2	
1996	2,744.1	2,602.7	2,533.3	501.5	420.9	814.3	141.4	5.2	
1997	2,707.8	2,561.7	2,584.0	498.0	430.5	849.7	146.1	5.4	
1998	2,759.5	2,643.8	2,638.4	498.6	437.1	875.7	115.7	4.2	
1999	2,818.8	2,705.3	2,685.3	494.7	443.6	900.8	113.5	4.0	
2000	2,830.1	2,719.7	2,728.9	488.1	447.5	930.9	110.4	3.9	
2001	2,857.1	2,730.7	2,688.3	454.2	446.6	921.5	126.4	4.4	
2002	2,928.5	2,778.5	2,664.4	428.5	438.7	938.0	150.0	5.1	
2003	2,909.5	2,740.5	2,667.5	414.1	440.8	950.3	169.0	5.8	
December(r) 2004	2,905.9	2,754.1	2,742.2	413.7	466.0	987.1	151.8	5.2 %	
2005									
January (p)	2,882.4	2,693.2	2,678.5	409.1	445.8	965.1	189.2	6.6 %	
February									
March									
April									
May									
June									
July									
August									
September									
October									
November (r)									
December (p)									

(r)=revised

**These industries not comparable to industry employment data before

(p)=preliminary

1990 because of change to NAICS coding system.

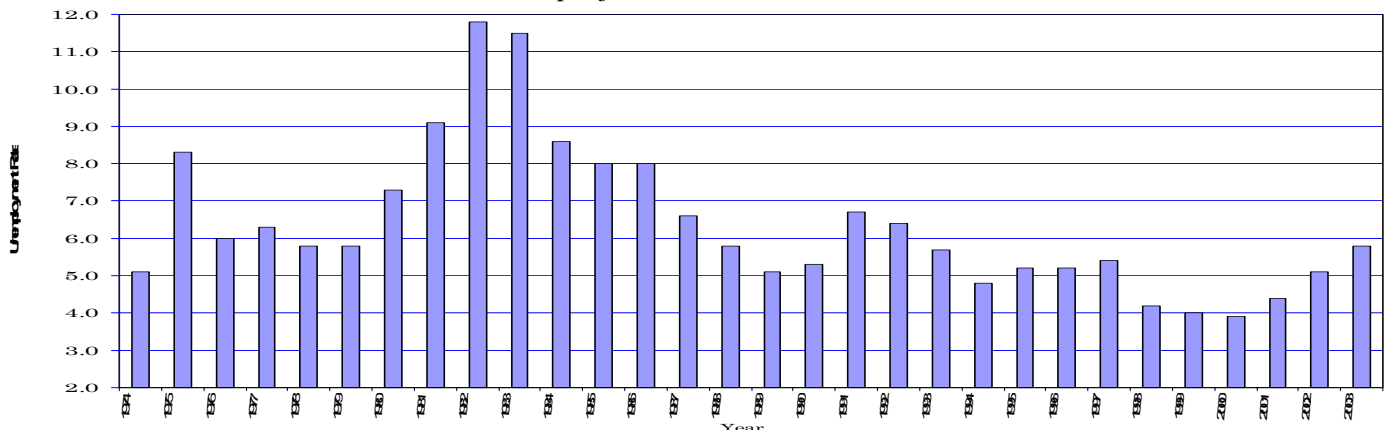
Trade = Wholesale and Retail Trade

Services = Professional/Business Services, Educational/Health Services, Leisure/Hospitality, and Other Services.

County	Jan	Jan	County	Jan	Jan
	2004	2005		2004	2005
Anderson	5.1	6.1	Lauderdale	12.1	10.5
Bedford	5.8	5.6	Lawrence	8.5	11.0
Benton	10.1	10.5	Lewis	7.0	9.5
Bledsoe	8.4	9.5	Lincoln	5.8	6.4
Blount	4.8	5.9	Loudon	5.2	5.5
Bradley	5.6	6.2	Macon	6.6	6.1
Campbell	6.9	7.3	Madison	6.1	6.7
Cannon	4.6	5.0	Marion	6.7	7.9
Carroll	9.8	10.2	Marshall	7.4	6.7
Carter	6.7	7.0	Maury	5.8	6.3
Cheatham	5.0	5.0	McMinn	7.7	7.1
Chester	6.1	7.4	McNairy	6.9	7.5
Claiborne	5.8	6.7	Meigs	8.6	8.9
Clay	11.0	12.3	Monroe	7.8	7.4
Cocke	11.8	11.3	Montgomery	4.9	5.7
Coffee	5.2	6.0	Moore	4.6	4.8
Crockett	11.0	10.4	Morgan	9.0	9.1
Cumberland	8.1	8.9	Obion	7.7	8.1
Davidson	4.8	5.0	Overton	7.0	7.4
Decatur	9.1	9.3	Perry	8.0	8.1
DeKalb	5.1	6.2	Pickett	12.0	12.5
Dickson	5.7	5.5	Polk	6.2	7.4
Dyer	6.8	7.4	Putnam	4.8	5.7
Fayette	7.1	9.1	Rhea	7.0	7.7
Fentress	8.3	8.6	Roane	6.5	7.0
Franklin	5.8	6.0	Robertson	5.4	5.0
Gibson	8.0	10.0	Rutherford	4.3	4.7
Giles	8.5	9.1	Scott	8.5	8.7
Grainger	6.7	7.3	Sequatchie	5.8	5.8
Greene	8.5	9.5	Sevier	11.4	11.7
Grundy	6.6	7.8	Shelby	6.3	7.3
Hamblen	6.2	6.1	Smith	9.8	8.4
Hamilton	5.0	5.4	Stewart	7.7	9.4
Hancock	8.7	14.0	Sullivan	6.4	6.5
Hardeman	8.6	11.5	Sumner	4.7	5.1
Hardin	9.2	9.8	Tipton	7.1	7.8
Hawkins	6.7	7.6	Trousdale	7.0	8.4
Haywood	9.6	9.8	Unicoi	7.9	7.8
Henderson	7.9	8.8	Union	5.6	6.3
Henry	9.7	10.0	Van Buren	8.3	9.5
Hickman	7.0	7.0	Warren	6.6	7.0
Houston	8.2	10.4	Washington	5.4	5.9
Humphreys	7.7	9.8	Wayne	9.3	12.4
Jackson	7.6	11.0	Weakley	7.4	6.9
Jefferson	8.1	8.4	White	6.9	8.1
Johnson	9.8	10.7	Williamson	3.6	3.9
Knox	4.0	4.8	Wilson	4.9	5.0
Lake	8.0	10.0			

*Data Not Seasonally Adjusted

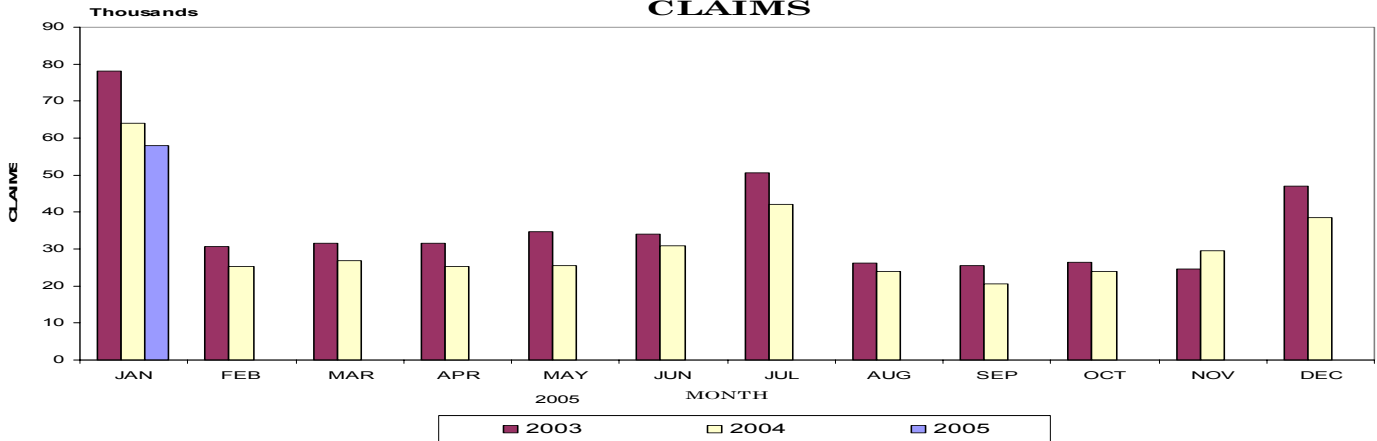
Unemployment Rates 1974-2003



Statewide

UNEMPLOYMENT INSURANCE ACTIVITIES

MONTHLY INITIAL CLAIMS



BENEFIT PROGRAMS

STATE BENEFIT PROGRAM

FEDERAL BENEFIT PROGRAMS

CLAIMS	Jan 2004	Dec 2004	Jan 2005	FORMER FEDERAL EMPLOYEES	Jan 2004	Dec 2004	Jan 2005
Initial Claims	64,005	38,576	57,895	Benefits Paid	\$654,340	\$578,500	\$670,969
Continued Weeks Claimed	273,144	186,541	262,075	Benefit Weeks Claimed	2,530	2,424	2,336
Nonmonetary Determinations	6,332	5,910	5,404	Initial Claims	215	176	195
Appeals Decisions	2,199	1,755	1,785	Continued Weeks Claimed	2,591	2,363	2,541
Lower Authority	1,799	1,468	1,480	Appeals Decisions	12	9	10
Higher Authority	400	287	305				

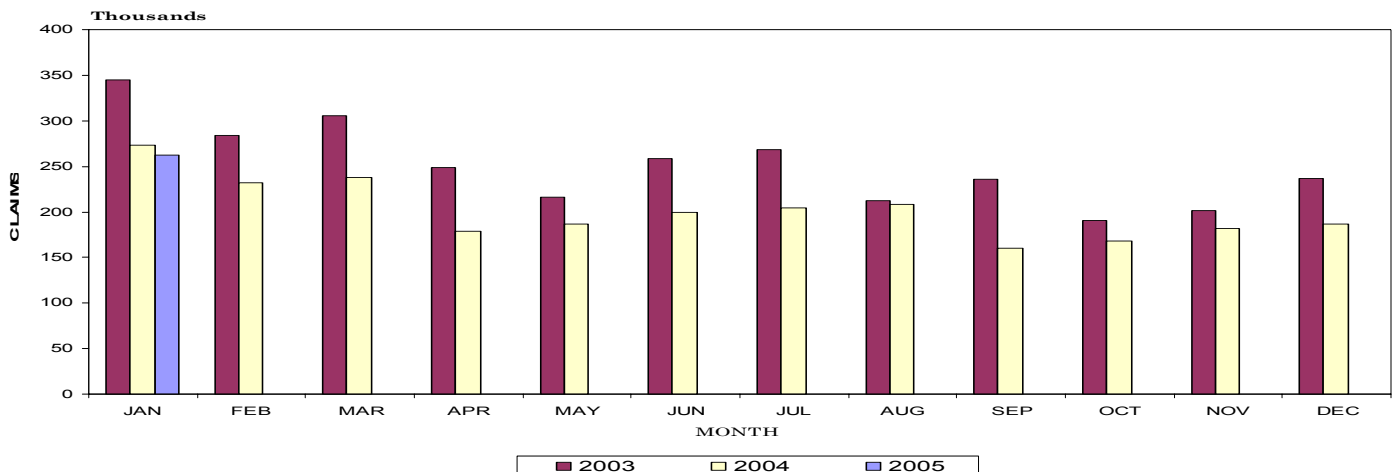
BENEFITS

FORMER MILITARY PERSONNEL

Amount Paid	\$47,087,049	\$35,123,819	\$47,450,014	Benefits Paid	\$457,445	\$522,415	\$556,304
Benefit Weeks Paid	245,002	186,895	223,588	Benefit Weeks Claimed	1,491	1,934	1,827
Average Weekly Benefit Amount	\$208	\$212	\$209	Initial Claims	174	113	171
First Payments	31,719	14,812	27,375	Continued Weeks Claimed	1,531	1,839	2,021
Final Payments	5,802	4,783	5,201	Appeals Decisions	2	2	5
Average Weeks Duration	15	14	14				
Trust Fund Balance*	\$463,547,055	\$566,813,444	\$540,287,865	*Trust Fund includes one-time deposit in March 2002 of \$162 million of Reed Act funds.			

CONTINUED WEEKS CLAIMED

MONTHLY CONTINUED WEEKS CLAIMED



Statewide

ESTIMATED NONFARM EMPLOYMENT (in thousands)

Industry	Revised		Preliminary December 2005	Net Change	
	December 2004	November 2004		Jan. 2004 Jan. 2005	Dec. 2004 Jan. 2005
Total Nonfarm	2,637.4	2,742.2	2,678.5	41.1	-63.7
Total Private	2,226.3	2,323.3	2,266.1	39.8	-57.2
Goods-Producing	522.0	536.7	526.6	4.6	-10.1
Natural Resources & Mining	4.0	4.2	4.0	0.0	-0.2
Construction	111.3	118.8	113.5	2.2	-5.3
Manufacturing	406.7	413.7	409.1	2.4	-4.6
Durable Goods Manufacturing	249.4	255.5	253.6	4.2	-1.9
Wood Product Manufacturing	16.5	17.7	17.5	1.0	-0.2
Nonmetallic Mineral Product Manufacturing	15.3	15.9	15.7	0.4	-0.2
Primary Metal Manufacturing	12.0	12.4	12.3	0.3	-0.1
Fabricated Metal Product Manufacturing	41.3	42.2	41.7	0.4	-0.5
Machinery Manufacturing	33.3	34.3	34.3	1.0	0.0
Computer & Electronic Product Manufacturing	11.4	11.2	10.7	-0.7	-0.5
Electrical Equipment & Appliance Manufacturing	22.6	23.3	23.1	0.5	-0.2
Transportation Equipment Manufacturing	61.1	62.3	62.3	1.2	0.0
Motor Vehicle Parts Manufacturing	36.0	36.9	37.0	1.0	0.1
Furniture & Related Product Manufacturing	19.7	19.8	19.8	0.1	0.0
Miscellaneous Manufacturing	16.2	16.4	16.2	0.0	-0.2
Nondurable Goods Manufacturing	157.3	158.2	155.5	-1.8	-2.7
Food Manufacturing	35.5	35.2	35.0	-0.5	-0.2
Animal Slaughtering & Processing	11.0	10.8	10.9	-0.1	0.1
Bakeries & Tortilla Manufacturing	7.6	7.6	7.4	-0.2	-0.2
Beverage & Tobacco Product Manufacturing	6.0	5.9	5.9	-0.1	0.0
Textile Mills	6.8	6.7	6.6	-0.2	-0.1
Textile Product Mills	3.8	4.0	4.0	0.2	0.0
Apparel Manufacturing	9.3	8.9	8.8	-0.5	-0.1
Paper Manufacturing	18.6	18.8	18.1	-0.5	-0.7
Printing & Related Support Activities	18.9	19.4	18.4	-0.5	-1.0
Chemical Manufacturing	27.9	27.7	27.4	-0.5	-0.3
Plastics & Rubber Products Manufacturing	27.8	28.5	28.4	0.6	-0.1
Plastics Product Manufacturing	13.9	14.4	14.3	0.4	-0.1
Rubber Product Manufacturing	13.9	14.1	14.1	0.2	0.0
Service-Providing	2,115.4	2,205.5	2,151.9	36.5	-53.6
Trade, Transportation, & Utilities	575.9	606.0	583.1	7.2	-22.9
Wholesale Trade	124.9	128.4	127.1	2.2	-1.3
Merchant Wholesalers, Durable Goods	63.7	65.0	64.7	1.0	-0.3
Merchant Wholesalers, Nondurable Goods	45.8	46.8	45.8	0.0	-1.0
Wholesale Electronic Markets	15.4	16.6	16.6	1.2	0.0
Retail Trade	313.7	337.6	318.7	5.0	-18.9
Motor Vehicle & Parts Dealers	41.9	43.2	42.6	0.7	-0.6
Furniture & Home Furnishings Stores	9.5	9.9	9.6	0.1	-0.3
Building Material, Garden Equipment, & Supplies	23.9	25.4	24.9	1.0	-0.5
Food & Beverage Stores	46.0	46.4	45.0	-1.0	-1.4
Health & Personal Care Stores	19.8	21.2	19.9	0.1	-1.3
Gasoline Stations	23.7	24.8	24.5	0.8	-0.3
Clothing & Clothing Accessories Stores	29.2	33.7	29.6	0.4	-4.1
Sporting Goods, Hobby, Book, & Music Stores	12.6	14.3	13.0	0.4	-1.3
General Merchandise Stores	69.2	77.0	70.8	1.6	-6.2
Miscellaneous Store Retailers	18.7	19.9	18.8	0.1	-1.1
Nonstore Retailers	11.0	12.4	11.8	0.8	-0.6
Transportation, Warehousing, & Utilities	137.3	140.0	137.3	0.0	-2.7
Utilities	3.5	3.5	3.5	0.0	0.0
Transportation & Warehousing	133.8	136.5	133.8	0.0	-2.7
Truck Transportation	58.8	61.4	60.6	1.8	-0.8
Information	50.1	49.8	48.5	-1.6	-1.3
Publishing Industries (except internet)	14.5	14.2	14.0	-0.5	-0.2
Telecommunications	16.0	15.7	15.1	-0.9	-0.6
Financial Activities	140.6	143.7	142.8	2.2	-0.9
Finance & Insurance	106.0	108.0	107.3	1.3	-0.7
Real Estate, Rental, & Leasing	34.6	35.7	35.5	0.9	-0.2
Professional & Business Services	288.5	308.0	301.1	12.6	-6.9
Professional, Scientific, & Technical Services	99.3	102.2	101.8	2.5	-0.4
Management of Companies & Enterprises	22.4	23.3	22.8	0.4	-0.5
Administrative, Support, & Waste Management	166.8	182.5	176.5	9.7	-6.0
Educational & Health Services	313.6	324.1	320.3	6.7	-3.8
Educational Services	41.5	44.5	41.7	0.2	-2.8
Health Care & Social Assistance	272.1	279.6	278.6	6.5	-1.0
Ambulatory Health Care Services	99.0	102.6	102.6	3.6	0.0
Hospitals	86.2	88.1	88.0	1.8	-0.1
Nursing & Residential Care Facilities	49.5	50.8	49.9	0.4	-0.9
Social Assistance	37.4	38.1	38.1	0.7	0.0
Leisure & Hospitality	234.8	252.7	242.4	7.6	-10.3
Arts, Entertainment, & Recreation	22.4	26.6	24.0	1.6	-2.6
Accommodation & Food Services	212.4	226.1	218.4	6.0	-7.7
Accommodation	30.8	32.2	29.9	-0.9	-2.3
Food Services & Drinking Places	181.6	193.9	188.5	6.9	-5.4
Other Services	100.8	102.3	101.3	0.5	-1.0
Repair & Maintenance	21.8	22.1	22.0	0.2	-0.1
Personal & Laundry Services	24.4	25.4	24.8	0.4	-0.6
Government	411.1	418.9	412.4	1.3	-6.5
Federal Government	50.8	50.1	50.3	-0.5	0.2
State Government	91.9	96.1	91.4	-0.5	-4.7
State Government Educational Services	45.6	49.3	44.6	-1.0	-4.7
Local Government	268.4	272.7	270.7	2.3	-2.0
Local Government Educational Services	137.6	141.4	139.6	2.0	-1.8

HOURS AND EARNINGS OF PRODUCTION WORKERS

AVERAGE WEEKLY EARNINGS

Industry	Jan. 2004	Dec. 2004	Jan. 2005
Manufacturing	\$553.48	\$561.19	\$547.84
Durable Goods Manufacturing	\$554.60	\$553.61	\$544.44
Fabricated Metal Product Manufacturing	\$552.63	\$605.11	\$592.76
Machinery Manufacturing	\$491.66	\$516.49	\$503.06
Nondurable Goods Manufacturing	\$549.42	\$572.11	\$554.61
Food Manufacturing	\$529.85	\$493.73	\$492.38

AVERAGE WEEKLY HOURS

Industry	Jan. 2004	Dec. 2004	Jan. 2005
Manufacturing	40.4	40.2	39.3
Durable Goods Manufacturing	40.6	39.6	39.0
Fabricated Metal Product Manufacturing	39.0	40.1	39.1
Machinery Manufacturing	36.5	37.4	36.8
Nondurable Goods Manufacturing	39.9	41.1	39.9
Food Manufacturing	39.6	36.6	36.8

AVERAGE HOURLY EARNINGS

Industry	Jan. 2004	Dec. 2004	Jan. 2005
Manufacturing	\$13.70	\$13.96	\$13.94
Durable Goods Manufacturing	\$13.66	\$13.98	\$13.96
Fabricated Metal Product Manufacturing	\$14.17	\$15.09	\$15.16
Machinery Manufacturing	\$13.47	\$13.81	\$13.67
Nondurable Goods Manufacturing	\$13.77	\$13.92	\$13.90
Food Manufacturing	\$13.38	\$13.49	\$13.38

NONFARM EMPLOYMENT AND LABOR FORCE IN TENNESSEE

Tennessee's seasonally adjusted estimated unemployment rate for January 2005 was 5.9 percent, up six-tenths of a percent from the December 2004 rate. This is the first month that Tennessee had a seasonally adjusted unemployment rate higher than the national rate.

The United States' estimated unemployment rate was 5.2 percent in January 2005. In January 2004, the national unemployment rate was 5.7 percent, and the state's unemployment rate was 5.5 percent.

Across Tennessee, the unemployment rate increased in 94 counties and decreased in one county. The lowest rate occurred in Williamson County at 3.9 percent, up 0.8 percent from the previous month. The highest rate was Hancock County's 14.0 percent, up from 10.6 percent in December. (Continued on Page 6)

CIVILIAN LABOR FORCE

CIVILIAN LABOR FORCE SUMMARY

	January 2004				Revised December 2004				Preliminary January 2005			
	Labor Force	Employment	Unemployed	Rate	Labor Force	Employment	Unemployed	Rate	L	Employment	Unemployed	Rate
Seasonally Adjusted												
U.S.	146,784,000	138,481,000	8,303,000	5.7	148,203,000	140,156,000	8,047,000	5.4	147,978,000	140,241,000	7,737,000	5.4
TENNESSEE	2,917,600	2,758,400	159,200	5.5	2,902,700	2,747,500	155,200	5.0	2,913,800	2,740,500	173,300	5.2
Not Seasonally Adjusted												
U.S.	147,844,000	138,700,000	9,144,000	6.2	147,877,000	140,278,000	7,599,000	5.1	147,126,000	138,682,000	8,444,000	5.7
TENNESSEE	2,927,000	2,753,600	173,400	5.9	2,896,900	2,745,100	151,800	5.2	2,882,400	2,693,200	189,200	6.6
Metropolitan Statistical Areas												
Chattanooga	247,730	236,200	11,530	4.7	250,360	239,050	11,310	4.5	247,780	234,570	13,210	5.3
Clarksville	98,490	92,810	5,680	5.8	99,860	94,820	5,040	5.0	98,740	92,730	6,010	6.1
Cleveland	53,340	50,320	3,020	5.7	53,260	50,600	2,660	5.0	52,790	49,440	3,350	6.3
Jackson	52,760	49,530	3,230	6.1	53,660	50,720	2,940	5.5	53,070	49,470	3,600	6.8
Johnson City	94,650	88,950	5,700	6.0	96,650	91,820	4,830	5.0	95,000	88,930	6,070	6.4
Kingsport-Bristol	138,110	129,190	8,920	6.5	137,640	130,520	7,120	5.2	136,270	127,530	8,740	6.4
Knoxville	332,060	317,430	14,630	4.4	336,500	322,800	13,700	4.1	333,230	315,950	17,280	5.2
Memphis	588,510	551,720	36,790	6.3	625,540	588,040	37,500	6.0	589,980	546,700	43,280	7.3
Morristown	61,900	57,590	4,310	7.0	62,780	59,430	3,350	5.3	62,570	58,090	4,480	7.2
Nashville	726,990	692,220	34,770	4.8	735,520	706,370	29,150	4.0	725,630	689,440	36,190	5.0
Micropolitan Statistical Areas												
Athens	23,770	21,950	1,820	7.7	23,970	22,560	1,410	5.9	23,900	22,210	1,690	7.1
Brownsville	9,460	8,550	910	9.6	9,130	8,360	770	8.4	9,200	8,290	910	9.9
Columbia	36,170	34,060	2,110	5.8	35,240	33,420	1,820	5.2	35,070	32,850	2,220	6.3
Cookeville	49,080	46,370	2,710	5.5	49,360	46,990	2,370	4.8	48,730	45,490	3,240	6.6
Crossville	20,420	20,020	400	2.0	21,850	20,380	1,470	6.7	21,820	19,890	1,930	8.8
Dyersburg	17,240	16,550	690	4.0	17,850	16,770	1,080	6.1	17,670	16,370	1,300	7.4
Greeneville	33,430	31,820	1,610	4.8	34,040	31,680	2,360	6.9	34,420	31,150	3,270	9.5
Harriman	25,060	23,300	1,760	7.0	24,760	23,320	1,440	5.8	24,680	22,960	1,720	7.0
Humboldt	22,720	21,510	1,210	5.3	23,130	21,260	1,870	8.1	23,150	20,840	2,310	10.0
LaFollette	18,580	15,620	2,960	15.9	17,050	16,040	1,010	5.9	17,000	15,760	1,240	7.3
Lawrenceburg	18,710	17,080	1,630	8.7	17,760	16,220	1,540	8.7	18,010	16,020	1,990	11.0
Lewisburg	15,270	13,400	1,870	12.2	14,040	13,210	830	5.9	13,950	13,020	930	6.7
Martin	17,720	16,560	1,160	6.5	17,490	16,490	1,000	5.7	17,520	16,310	1,210	6.9
McMinnville	19,210	17,620	1,590	8.3	18,730	17,720	1,010	5.4	18,610	17,310	1,300	7.0
Newport	14,900	13,820	1,080	7.2	15,260	14,150	1,110	7.3	15,550	13,800	1,750	11.3
Paris	14,240	12,930	1,310	9.2	13,940	12,790	1,150	8.2	13,960	12,560	1,400	10.0
Sevierville	37,940	36,700	1,240	3.3	41,480	38,990	2,490	6.0	41,600	36,730	4,870	11.7
Shelbyville	21,470	19,620	1,850	8.6	20,900	19,930	970	4.6	20,830	19,670	1,160	5.6
Tullahoma	47,190	45,800	1,390	2.9	48,670	46,400	2,270	4.7	48,500	45,640	2,860	5.9
Union City	18,530	16,950	1,580	8.5	18,020	16,850	1,170	6.5	3,120	1,660	1,460	46.8

(Continued from Page 5)

Total nonfarm employment increased by 41,100 jobs from January 2004 to January 2005. During this period, there were increases in administrative/support/waste management (up 9,700 jobs); health care/social assistance (up 6,500 jobs), which includes increases of 3,600 jobs in ambulatory health care services and 1,800 jobs in hospitals; leisure/hospitality services (up 7,600 jobs), which includes an increase of 6,900 jobs in food services/drinking places; retail trade (up 5,000 jobs), which includes an increase of

1,600 jobs in general merchandise stores and 1,000 jobs in building material/garden equipment/supplies; professional/scientific/technical services (up 2,500 jobs); and construction, financial activities, and wholesale trade (all up 2,200 jobs). This was partially offset by drops in information (down 1,600 jobs), and state government educational services and food/beverage stores (both down 1,000 jobs).

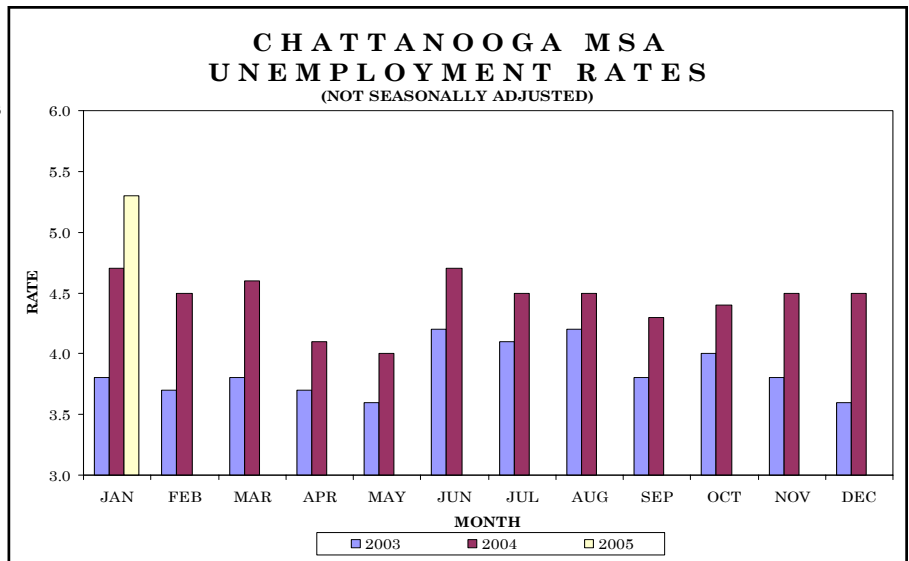
During January, nonfarm employment decreased by 63,700 jobs. There were

decreases in retail trade (down 18,900 jobs), which includes decreases of 6,200 jobs in general merchandise stores and 4,100 jobs in clothing/clothing accessories stores; accommodation/food services (down 7,700 jobs), which includes a decrease of 5,400 jobs in food services/drinking places; administrative/support/waste management (down 6,000 jobs); construction (down 5,300 jobs); state government educational services (down 4,700 jobs); educational services (down 2,800 jobs); and transportation/warehousing (down 2,700 jobs).

The data from all the nonfarm employment estimates tables include all full- and part-time nonfarm wage and salary employees who worked during, or received pay for, any part of the pay period which includes the 12th of the month. This is a count of jobs by place of work. Agricultural workers, proprietors, self-employed persons, workers in private households, and unpaid family workers are excluded. These numbers may not add due to rounding. Data are based on the 2004 benchmark.

Total nonfarm employment decreased by 5,200 jobs from December 2004 to January 2005. There were decreases in retail trade (down 1,500 jobs), which includes a decline of 500 jobs in general merchandise stores; administrative/support/waste management (down 1,000 jobs); natural resources/mining/construction and state government (both down 600 jobs); local government (down 300 jobs); and a drop of 200 jobs in durable and nondurable goods manufacturing, educational/health services, and leisure/hospitality.

During the past 12 months, nonfarm employment increased by 2,900 jobs. During that time, goods-producing jobs increased by 100, while service-providing jobs increased by 2,800.



HOURS AND EARNINGS OF PRODUCTION WORKERS

CHATTANOOGA MSA

Industry	Average Weekly Earnings			Average Weekly Hours			Average Hourly Earnings		
	Jan. 2004	Dec. 2004	Jan. 2005	Jan. 2004	Dec. 2004	Jan. 2005	Jan. 2004	Dec. 2004	Jan. 2005
	Manufacturing	\$508.34	\$511.27	\$517.79	40.7	41.0	40.9	\$12.49	\$12.47
Durable Goods Manufacturing	\$545.43	\$548.23	\$541.91	39.9	40.4	39.7	\$13.67	\$13.57	\$13.65
Nondurable Goods Manufacturing	\$479.08	\$481.48	\$498.26	41.3	41.4	41.8	\$11.60	\$11.63	\$11.92

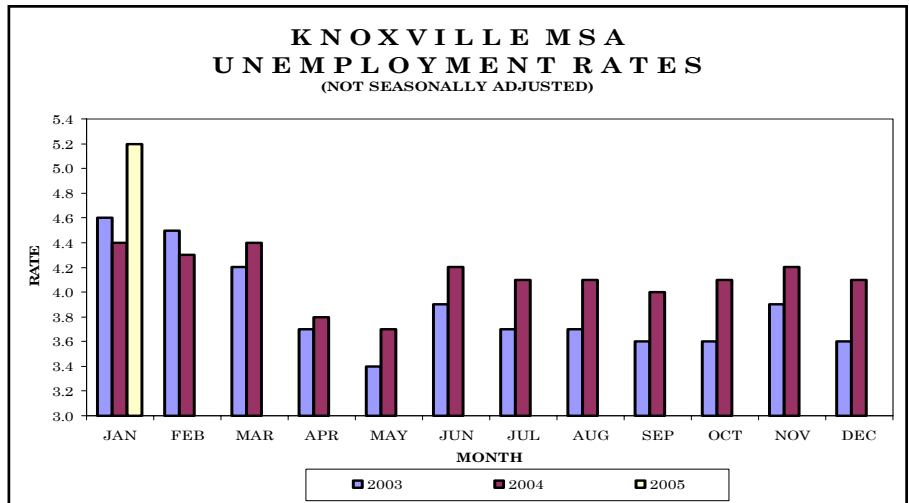
ESTIMATED NONFARM EMPLOYMENT (in thousands)

Industry	January 2004	Revised December 2004	Preliminary January 2005	Net Change	
	2004	2004	2005	Jan. 2004 Jan. 2005	Dec. 2004 Jan. 2005
Total Nonfarm	233.8	241.9	236.7	2.9	-5.2
Total Private	198.4	205.2	201.0	2.6	-4.2
Goods-Producing	43.7	44.8	43.8	0.1	-1.0
Natural Resources, Mining, & Construction	8.7	9.5	8.9	0.2	-0.6
Manufacturing	35.0	35.3	34.9	-0.1	-0.4
Durable Goods Manufacturing	15.5	15.8	15.6	0.1	-0.2
Nondurable Goods Manufacturing	19.5	19.5	19.3	-0.2	-0.2
Food Manufacturing	6.1	6.1	6.1	0.0	0.0
Textile Mills	5.2	4.9	4.9	-0.3	0.0
Service-Providing	190.1	197.1	192.9	2.8	-4.2
Trade, Transportation, & Utilities	54.2	56.4	54.8	0.6	-1.6
Wholesale Trade	9.0	9.3	9.3	0.3	0.0
Retail Trade	25.2	27.0	25.5	0.3	-1.5
General Merchandise Stores	5.5	6.3	5.8	0.3	-0.5
Transportation, Warehousing, & Utilities	20.0	20.1	20.0	0.0	-0.1
Information	2.8	3.1	3.0	0.2	-0.1
Financial Activities	18.7	18.9	18.9	0.2	0.0
Professional & Business Services	25.0	26.6	25.6	0.6	-1.0
Professional, Scientific, & Technical Services	8.4	8.4	8.4	0.0	0.0
Management of Companies & Enterprises	3.9	3.9	3.9	0.0	0.0
Administrative, Support, & Waste Management	12.7	14.3	13.3	0.6	-1.0
Educational & Health Services	23.8	24.2	24.0	0.2	-0.2
Leisure & Hospitality	19.6	20.4	20.2	0.6	-0.2
Accommodation & Food Services	17.7	18.4	18.3	0.6	-0.1
Other Services	10.6	10.8	10.7	0.1	-0.1
Government	35.4	36.7	35.7	0.3	-1.0
Federal Government	6.9	6.9	6.8	-0.1	-0.1
State Government	5.8	6.5	5.9	0.1	-0.6
Local Government	22.7	23.3	23.0	0.3	-0.3



Knoxville MSA - Anderson, Blount, Knox, Loudon, Union

Total nonfarm employment decreased by 6,000 jobs from December 2004 to January 2005. There were decreases in retail trade (down 2,000 jobs), which includes a decline of 800 jobs in general merchandise stores and 200 jobs in food/beverage stores; administrative/support/waste management (down 1,100 jobs); educational/health services (down 800 jobs); accommodation/food services (down 700 jobs), which includes a drop of 200 jobs in food services/drinking places; natural resources/mining/construction (down 600 jobs); durable goods manufacturing (down 300 jobs); and wholesale trade (down 200 jobs). This was partially offset by an increase of 200 jobs in local government.



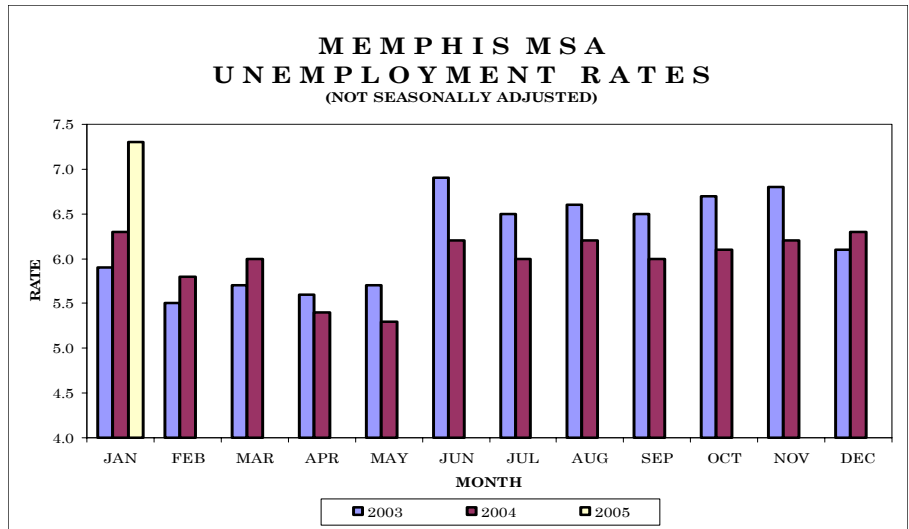
HOURS AND EARNINGS OF PRODUCTION WORKERS KNOXVILLE MSA

Industry	Average Weekly Earnings		Average Weekly Hours			Average Hourly Earnings			
	Jan. 2004	Dec. 2004	Jan. 2005	Jan. 2004	Dec. 2004	Jan. 2005	Jan. 2004	Dec. 2004	Jan. 2005
Manufacturing	\$547.77	\$594.66	\$604.90	40.1	39.2	38.9	\$13.66	\$15.17	\$15.55
Durable Goods Manufacturing	\$596.37	\$652.37	\$680.10	41.3	39.9	40.1	\$14.44	\$16.35	\$16.96
Nondurable Goods Manufacturing	\$456.70	\$480.95	\$449.90	37.9	37.9	36.4	\$12.05	\$12.69	\$12.36

ESTIMATED NONFARM EMPLOYMENT (in thousands)

Industry	January	Revised December	Preliminary January	Net Change	
	2004	2004	2005	Jan. 2004	Dec. 2004
	2004	2004	2005	Jan. 2005	Jan. 2005
Total Nonfarm	315.1	327.8	321.8	6.7	-6.0
Total Private	262.1	274.9	268.6	6.5	-6.3
Goods-Producing	54.2	55.8	54.9	0.7	-0.9
Natural Resources, Mining, & Construction	15.6	17.0	16.4	0.8	-0.6
Manufacturing	38.6	38.8	38.5	-0.1	-0.3
Durable Goods Manufacturing	28.3	28.2	27.9	-0.4	-0.3
Fabricated Metal Product Manufacturing	8.3	8.1	8.2	-0.1	0.1
Transportation Equipment Manufacturing	8.6	8.6	8.6	0.0	0.0
Nondurable Goods Manufacturing	10.3	10.6	10.6	0.3	0.0
Service-Providing	260.9	272.0	266.9	6.0	-5.1
Trade, Transportation, & Utilities	66.8	71.4	68.8	2.0	-2.6
Wholesale Trade	15.4	16.6	16.4	1.0	-0.2
Retail Trade	41.2	44.1	42.1	0.9	-2.0
Food & Beverage Stores	5.6	6.1	5.9	0.3	-0.2
General Merchandise Stores	9.1	10.1	9.3	0.2	-0.8
Transportation, Warehousing, & Utilities	10.2	10.7	10.3	0.1	-0.4
Information	6.2	6.2	6.2	0.0	0.0
Financial Activities	16.4	16.7	16.7	0.3	0.0
Professional & Business Services	37.3	39.0	37.9	0.6	-1.1
Administrative, Support, & Waste Management	18.6	20.0	18.9	0.3	-1.1
Educational & Health Services	36.7	38.5	37.7	1.0	-0.8
Leisure & Hospitality	30.7	33.4	32.6	1.9	-0.8
Accommodation & Food Services	28.2	30.6	29.9	1.7	-0.7
Food Services & Drinking Places	25.6	27.6	27.4	1.8	-0.2
Other Services	13.8	13.9	13.8	0.0	-0.1
Government	53.0	52.9	53.2	0.2	0.3
Federal Government	5.2	5.2	5.2	0.0	0.0
State Government	18.9	18.7	18.8	-0.1	0.1
Local Government	28.9	29.0	29.2	0.3	0.2

Total nonfarm employment decreased by 9,300 jobs from December 2004 to January 2005. There were decreases in retail trade (down 3,000 jobs), which includes a decline of 1,100 jobs in general merchandise stores; administrative/support/waste management (down 2,000 jobs); educational/health services (down 1,200 jobs), which includes a drop of 500 jobs in health care/social assistance; natural resources/mining/construction (down 900 jobs); state government (down 800 jobs); food services/drinking places (down 700 jobs); information (down 500 jobs); and other services and truck transportation (both down 200 jobs). This was partially offset by an increase in durable goods manufacturing (up 900 jobs).



HOURS AND EARNINGS OF PRODUCTION WORKERS

MEMPHIS MSA

Industry	Average Weekly Earnings			Average Weekly Hours			Average Hourly Earnings		
	Jan. 2004	Dec. 2004	Jan. 2005	Jan. 2004	Dec. 2004	Jan. 2005	Jan. 2004	Dec. 2004	Jan. 2005
Manufacturing	\$591.60	\$615.30	\$586.92	40.8	42.0	40.2	\$14.50	\$14.65	\$14.60
Durable Goods Manufacturing	\$536.11	\$539.29	\$528.19	39.8	39.8	39.3	\$13.47	\$13.55	\$13.44
Nondurable Goods Manufacturing	\$637.31	\$679.13	\$637.55	41.6	43.9	41.0	\$15.32	\$15.47	\$15.55

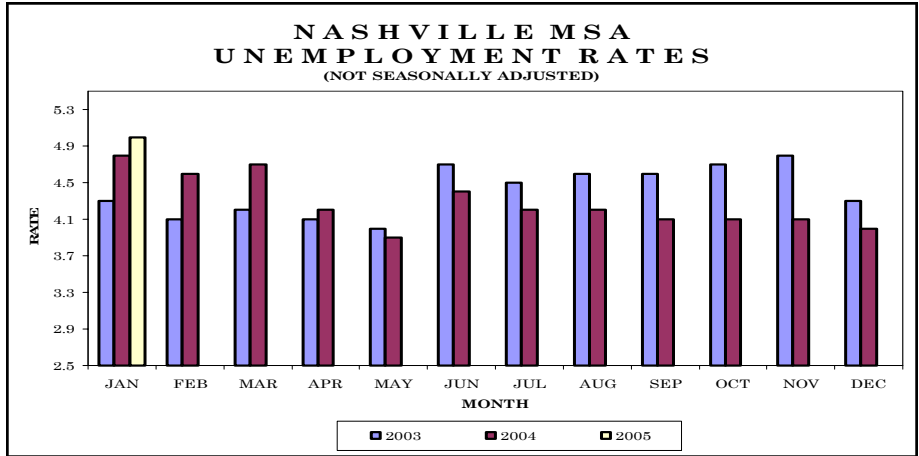
ESTIMATED NONFARM EMPLOYMENT (in thousands)

Industry	January 2004	Revised	Preliminary	Net Change	
		December 2004	January 2005	Jan. 2004	Dec. 2004
				Jan. 2005	Jan. 2005
Total Nonfarm	605.9	624.2	614.9	9.0	-9.3
Total Private	515.3	532.5	524.0	8.7	-8.5
Goods-Producing	76.7	78.6	78.6	1.9	0.0
Natural Resources, Mining, & Construction	24.9	26.7	25.8	0.9	-0.9
Manufacturing	51.8	51.9	52.8	1.0	0.9
Durable Goods Manufacturing	23.4	23.7	24.6	1.2	0.9
Nondurable Goods Manufacturing	28.4	28.2	28.2	-0.2	0.0
Service-Providing	529.2	545.6	536.3	7.1	-9.3
Trade, Transportation, & Utilities	167.7	174.2	170.8	3.1	-3.4
Wholesale Trade	35.8	36.9	36.8	1.0	-0.1
Retail Trade	69.4	74.4	71.4	2.0	-3.0
Food & Beverage Stores	9.7	9.9	9.6	-0.1	-0.3
General Merchandise Stores	13.9	15.0	13.9	0.0	-1.1
Transportation, Warehousing, & Utilities	62.5	62.9	62.6	0.1	-0.3
Truck Transportation	14.7	15.1	14.9	0.2	-0.2
Warehousing & Storage	7.7	7.9	7.8	0.1	-0.1
Information	9.0	8.8	8.3	-0.7	-0.5
Financial Activities	32.8	33.0	32.9	0.1	-0.1
Professional & Business Services	70.2	72.9	70.8	0.6	-2.1
Professional, Scientific, & Technical Services	18.8	18.8	18.9	0.1	0.1
Management of Companies & Enterprises	4.7	5.0	4.8	0.1	-0.2
Administrative, Support, & Waste Management	46.7	49.1	47.1	0.4	-2.0
Educational & Health Services	70.0	73.2	72.0	2.0	-1.2
Health Care & Social Assistance	61.0	63.1	62.6	1.6	-0.5
Hospitals	23.5	24.2	24.0	0.5	-0.2
Leisure & Hospitality	64.9	67.4	66.4	1.5	-1.0
Accommodation & Food Services	58.4	59.9	59.0	0.6	-0.9
Food Services & Drinking Places	38.9	42.2	41.5	2.6	-0.7
Other Services	24.0	24.4	24.2	0.2	-0.2
Government	90.6	91.7	90.9	0.3	-0.8
Federal Government	16.1	15.6	15.6	-0.5	0.0
State Government	15.4	16.4	15.6	0.2	-0.8
Local Government	59.1	59.7	59.7	0.6	0.0



Nashville MSA—Cannon, Cheatham, Davidson, Dickson, Hickman, Macon, Robertson, Rutherford, Smith, Sumner, Trousdale, Williamson, Wilson

Total nonfarm employment decreased by 15,500 jobs from December 2004 to January 2005. There were seasonal declines in retail trade (down 4,800 jobs), which includes a drop of 1,700 jobs in general merchandise stores; leisure/hospitality (down 4,100 jobs); professional/business services (down 2,100 jobs); natural resources/mining/construction (down 1,300 jobs); educational/health services (down 1,200 jobs); transportation/warehousing/utilities and local government (both down 700 jobs); and nondurable goods manufacturing and finance/insurance (both down 400 jobs). This was partially offset by increases in state government (up 500 jobs), hospitals (up 400 jobs), and electrical equipment/appliance manufacturing (up 200 jobs).



HOURS AND EARNINGS OF PRODUCTION WORKERS

NASHVILLE MSA

Industry	Average Weekly Earnings			Average Weekly Hours			Average Hourly Earnings		
	Jan. 2004	Dec. 2004	Jan. 2005	Jan. 2004	Dec. 2004	Jan. 2005	Jan. 2004	Dec. 2004	Jan. 2005
	Manufacturing	\$585.07	\$594.05	\$575.51	40.8	40.8	39.8	\$14.34	\$14.56
Durable Goods Manufacturing	\$601.13	\$630.60	\$607.77	41.4	41.9	40.9	\$14.52	\$15.05	\$14.86
Nondurable Goods Manufacturing	\$551.63	\$514.75	\$502.43	39.6	38.5	37.3	\$13.93	\$13.37	\$13.47

ESTIMATED NONFARM EMPLOYMENT (in thousands)

Industry	January 2004	Revised December 2004	Preliminary January 2005	Net Change	
				Jan. 2004 Jan. 2005	Dec. 2004 Jan. 2005
Total Nonfarm	695.8	727.7	712.2	16.4	-15.5
Total Private	599.8	631.0	615.8	16.0	-15.2
Goods-Producing	115.0	119.4	117.7	2.7	-1.7
Natural Resources, Mining, & Construction	33.1	34.5	33.2	0.1	-1.3
Manufacturing	81.9	84.9	84.5	2.6	-0.4
Durable Goods Manufacturing	55.7	58.1	58.1	2.4	0.0
Computer & Electronic Product Manufacturing	4.8	5.0	4.9	0.1	-0.1
Electrical Equipment & Appliance Manufacturing	6.6	7.4	7.6	1.0	0.2
Transportation Equipment Manufacturing	18.1	19.6	19.6	1.5	0.0
Nondurable Goods Manufacturing	26.2	26.8	26.4	0.2	-0.4
Service-Providing	580.8	608.3	594.5	13.7	-13.8
Trade, Transportation, & Utilities	142.5	151.5	145.9	3.4	-5.6
Wholesale Trade	33.7	34.0	33.9	0.2	-0.1
Retail Trade	81.9	89.0	84.2	2.3	-4.8
Building Material, Garden Equipment, & Supplies	6.9	7.1	7.1	0.2	0.0
Food & Beverage Stores	11.3	11.5	11.3	0.0	-0.2
General Merchandise Stores	16.9	18.8	17.1	0.2	-1.7
Transportation, Warehousing, & Utilities	26.9	28.5	27.8	0.9	-0.7
Information	19.5	19.0	18.9	-0.6	-0.1
Financial Activities	44.0	44.6	44.1	0.1	-0.5
Finance & Insurance	33.6	34.0	33.6	0.0	-0.4
Real Estate, Rental, & Leasing	10.4	10.6	10.5	0.1	-0.1
Professional & Business Services	85.7	95.2	93.1	7.4	-2.1
Professional, Scientific, & Technical Services	32.5	33.6	32.9	0.4	-0.7
Management of Companies & Enterprises	6.7	7.2	7.2	0.5	0.0
Administrative, Support, & Waste Management	46.5	54.4	53.0	6.5	-1.4
Educational & Health Services	96.3	99.0	97.8	1.5	-1.2
Educational Services	20.2	21.2	20.2	0.0	-1.0
Health Care & Social Assistance	76.1	77.8	77.6	1.5	-0.2
Hospitals	27.3	27.1	27.5	0.2	0.4
Leisure & Hospitality	67.4	73.0	68.9	1.5	-4.1
Arts, Entertainment, & Recreation	7.6	9.2	8.3	0.7	-0.9
Accommodation & Food Services	59.8	63.8	60.6	0.8	-3.2
Accommodation	11.0	11.9	11.2	0.2	-0.7
Food Services & Drinking Places	48.8	51.9	49.4	0.6	-2.5
Other Services	29.4	29.3	29.4	0.0	0.1
Government	96.0	96.7	96.4	0.4	-0.3
Federal Government	11.4	11.7	11.6	0.2	-0.1
State Government	28.6	28.1	28.6	0.0	0.5
Local Government	56.0	56.9	56.2	0.2	-0.7

Nonfarm Employment (Smaller MSAs)

	Clarksville, TN-KY MSA		Cleveland, TN MSA		Jackson, TN MSA	
	Dec. 04 Revised	Jan. 05 Prelim.	Dec. 04 Revised	Jan. 05 Prelim.	Dec. 04 Revised	Jan. 05 Prelim.
Total Nonfarm	81,800	80,600	9,200	9,200	60,900	59,400
Total Private	63,900	62,800	41,200	40,400	49,400	48,000
Goods-Producing	17,700	17,400	35,200	34,600	14,700	14,500
Service-Providing	64,100	63,200	29,400	28,700	46,200	44,900
Private Service-Providing	46,200	45,400	23,400	22,900	34,700	33,500
Natural Resources/Construction	2,700	2,600	1,700	1,700	3,500	3,400
Manufacturing	15,000	14,800	10,100	10,000	11,200	11,100
Durable Goods	9,800	9,700	5,300	5,200	7,300	7,200
Nondurable Goods	5,200	5,100	4,800	4,800	3,900	3,900
Trade/Transportation/Utilities	14,600	14,500	7,600	7,500	12,700	12,300
Wholesale Trade	2,200	2,200	1,800	1,800	2,400	2,400
Retail Trade	11,200	11,100	4,800	4,700	8,000	7,600
General Merchandise Stores	3,500	3,500	NA	NA	NA	NA
Transportation/Warehousing/Utilities	1,200	1,200	1,000	1,000	2,300	2,300
Information	1,300	1,200	200	200	700	700
Financial Activities	2,600	2,500	1,600	1,600	1,800	1,800
Professional/Business Services	8,400	8,300	4,000	4,000	4,400	4,400
Educational/Health Services	8,600	8,400	4,800	4,600	8,100	7,500
Leisure/Hospitality	7,800	7,600	2,800	2,700	4,700	4,500
Other Services	2,900	2,900	2,400	2,300	2,300	2,300
Government	17,900	17,800	6,000	5,800	11,500	11,400
Federal Government	5,400	5,300	400	400	600	600
State Government	3,300	3,300	700	600	1,700	1,700
Local Government	9,200	9,200	4,900	4,800	9,200	9,100

	Johnson City, TN MSA		Kingsport/Bristol, TN MSA		Morristown, TN MSA	
	Dec. 04 Revised	Jan. 05 Prelim.	Dec. 04 Revised	Jan. 05 Prelim.	Dec. 04 Revised	Jan. 05 Prelim.
Total Nonfarm	81,200	78,700	121,700	119,000	51,100	50,400
Total Private	65,500	64,300	106,000	103,800	44,500	43,900
Goods-Producing	15,200	15,000	32,700	32,400	17,900	17,800
Service-Providing	66,000	63,700	89,000	86,600	33,200	32,600
Private Service-Providing	50,300	49,300	73,300	71,400	26,600	26,100
Natural Resources/Construction	3,900	3,700	6,700	6,400	1,900	1,800
Manufacturing	11,300	11,300	26,000	26,000	16,000	16,000
Durable Goods	NA	NA	11,800	11,800	11,000	11,000
Nondurable Goods	NA	NA	14,200	14,200	NA	NA
Trade/Transportation/Utilities	13,800	13,500	25,200	24,100	10,100	9,900
Wholesale Trade	3,100	3,100	5,100	5,100	2,100	2,100
Retail Trade	9,400	9,100	15,800	14,700	6,000	5,800
General Merchandise Stores	NA	NA	NA	NA	NA	NA
Transportation/Warehousing/Utilities	1,300	1,300	4,300	4,300	2,000	2,000
Information	2,400	2,400	1,800	1,800	700	700
Financial Activities	4,400	4,500	4,400	4,300	1,800	1,800
Professional/Business Services	8,400	8,000	10,200	9,900	4,100	4,000
Educational/Health Services	11,000	10,800	15,700	15,600	5,400	5,300
Leisure/Hospitality	8,100	7,900	11,500	11,200	2,900	2,800
Other Services	2,200	2,200	4,500	4,500	1,600	1,600
Government	15,700	14,400	15,700	15,200	6,600	6,500
Federal Government	2,100	2,100	1,200	1,200	300	400
State Government	5,900	4,800	2,200	2,100	1,400	1,200
Local Government	7,700	7,500	12,300	11,900	4,900	4,900

Clarksville MSA is Montgomery County, Stewart County, Christian County, KY, & Trigg County, KY. **Cleveland MSA** is Bradley & Polk Counties. **Jackson MSA** is Chester & Madison Counties. **Johnson City MSA** is Carter, Unicoi, & Washington Counties. **Kingsport-Bristol MSA** is Hawkins County, Sullivan County, Scott County, VA, Washington County, VA, & Bristol City, VA. **Morristown MSA** is Grainger, Hamblen, & Jefferson Counties.

Tennessee Department of Labor & Workforce Development
 Employment Security Division, Research & Statistics
 11th Floor, Davy Crockett Tower
 500 James Robertson Parkway
 Nashville, TN 37245

FIRST CLASS MAIL
 POSTAGE & FEES PAID
 BUREAU OF
 LABOR STATISTICS
 PERMIT NO. G-738

Phone: 615-741-2284
 Fax: 615-532-9434
 Email: wayne.meisels@state.tn.us



We're on the Web
www.tennessee.gov/labor-wfd
 Check out [The Source](http://www.tennessee.gov/labor-wfd/source) at
www.tennessee.gov/labor-wfd/source



Department of Labor and Workforce Development, January 2005, Publication Auth. No. 337383; 750 copies, in cooperation with the U.S. Department of Labor. This document was promulgated at a cost of \$1.01 per copy.

U.S. Consumer Price Index January 2005

Group	Index	Percent Change	
		Yearly	Monthly
U.S. City Average			
All Items (1982-84=100) / All Urban Consumers	190.7	3.0	0.2
All Items (1982-84=100) / Wage Earners & Clerical Workers	186.3	3.0	0.2
South			
All Items (1982-84=100) / All Urban Consumers	183.6	3.0	0.2
All Items (1982-84=100) / Wage Earners & Clerical Workers	180.5	3.1	0.1

