

Overturedn ATV – Inspection #1067410

A **24 year old male employee** was fatally injured when an All-Terrain Vehicle (ATV) lost control, and tipped onto its side. The operator and the victim were heading from the main horse barn to the second horse barn in an all-terrain ATV, Polaris Ranger 800 Crew. The operator veered off the gravel path between the barns into a field of wet grass to get a closer look at turkeys observed near a wooded area. It is a possibility, that the ATV was placed into a sharp left turn with the accelerator pushed to the floor to make the wheels “spin”. The operator lost control and the ATV turned over, resting on the passenger side of the vehicle. The victim, not wearing his seat belt, was partially ejected from the ATV and caught between the ground and the ATV. During the investigation it was determined that the farm did not have a policy requiring the use of the seat belt while traveling in the ATV. The victim died within an hour from his injuries.

Citation(s) as Originally Issued

A complete inspection was conducted at the accident scene. Some of the items cited may not directly relate to the fatality.

Citation 1 Item 1

TCA 50-3-105(1)	<p>Each employer did not furnish to each of its employees conditions of employment and a place of employment free from recognized hazards that were causing or were likely to cause death or serious injury or harm to its employees in the following instances: In that the employer did not implement a safety program to ensure employees were protected from rollover hazards.</p> <p>Feasible methods to correct these hazards include employee training on the operating instructions and safety precautions listed in the Polaris Owner's Manual.</p>
-----------------	--

Overtuned ATV – Inspection #1067410



Photo 1 of 2 – Photograph showing the Polaris resting on the passenger side.

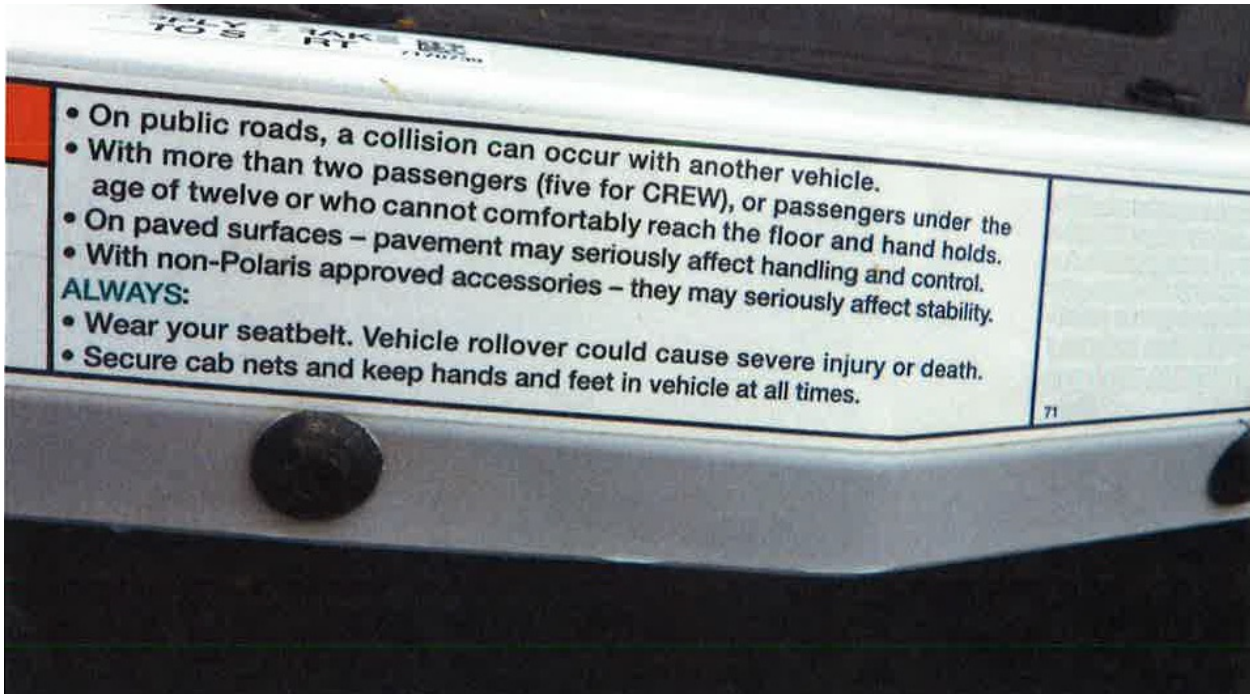


Photo 2 of 2 – Photograph showing the manufacturer's warning label.