

TENNESSEE ECONOMIC ANALYSIS

November 2025

NOT TO BE RELEASED BEFORE:

Friday, January 9, 2026 @ 1:30 PM CT

Prepared by:

Tennessee Department of Labor and Workforce Development

Workforce Insights, Research and Reporting Engine Division

Briefing Packet Summary November 2025

Unemployment Rates

	November 2024	October 2025	November 2025	Change From	
				Year Ago	Month Ago
Tennessee					
Not Seasonally Adjusted	3.7%	-	3.7%	0.0%	-
Seasonally Adjusted	3.7%	-	3.6%	-0.1%	-
United States					
Not Seasonally Adjusted	4.0%	-	4.3%	0.3%	-
Seasonally Adjusted	4.2%	-	4.6%	0.4%	-

Hours and Earnings of Production Workers (Manufacturing)

Tennessee	October 2025	November 2025	Change
Average Weekly Earnings	\$1,040.38	\$1,024.99	-\$15.39
Average Weekly Hours	41.9	41.7	-0.2
Average Hourly Earnings	\$24.83	\$24.58	-\$0.25

United States	October 2025	November 2025	Change
Average Weekly Earnings	\$1,203.82	\$1,222.54	\$18.72
Average Weekly Hours	41.1	41.4	0.3
Average Hourly Earnings	\$29.29	\$29.53	\$0.24

SUMMARY:

Over the past year, Tennessee's seasonally adjusted unemployment rate has decreased from 3.7% in November 2024

Over the month, nonfarm employment increased 7,600 jobs. The largest increases were in private education and health services, other services, and administrative, support, and waste services.

Over the year, nonfarm employment increased 34,800 jobs. The largest increases were in professional and business services, trade, transportation, and utilities, and leisure and hospitality.

ADDITIONAL NOTE ON THE AVAILABILITY OF OCTOBER DATA:

There are no labor force estimates for October. Household survey data, a primary input for these estimates, was not collected during October due to a lapse in federal appropriations and was not collected retroactively. Industry employment, hours and earnings data is available and include data self-reported by employers during October as part of the establishment survey. Additional establishment survey data was collected once government operations resumed in November.

**LABOR FORCE ESTIMATES SUMMARY
HOUSEHOLD SURVEY**

Tennessee	November 2024	October 2025	November 2025	Change from November 2024 to November 2025		Change from October 2025 to November 2025	
Not Seasonally Adjusted							
Civilian Labor Force	3,431,049	-	3,523,576	92,527	2.7%	-	-
Labor Force Participation Rate	59.5%	-	60.4%	0.9	percentage points	-	-
Employment	3,305,525	-	3,394,334	88,809	2.7%	-	-
Unemployment	125,524	-	129,242	3,718	3.0%	-	-
Unemployment Rate	3.7%	-	3.7%	0.0	percentage points	-	-

Seasonally Adjusted

Civilian Labor Force	3,436,912	-	3,518,329	81,417	2.4%	-	-
Labor Force Participation Rate	59.6%	-	60.3%	0.7	percentage points	-	-
Employment	3,308,324	-	3,392,461	84,137	2.5%	-	-
Unemployment	128,588	-	125,868	-2,720	-2.1%	-	-
Unemployment Rate	3.7%	-	3.6%	-0.1	percentage points	-	-

United States	November 2024	October 2025	November 2025	Change from November 2024 to November 2025		Change from October 2025 to November 2025	
----------------------	---------------	--------------	---------------	---	--	--	--

Not Seasonally Adjusted							
Civilian Labor Force	168,164,000	-	171,467,000	3,303,000	2.0%	-	-
Labor Force Participation Rate	62.4%	-	62.4%	0.0	percentage points	-	-
Employment	161,456,000	-	164,066,000	2,610,000	1.6%	-	-
Unemployment	6,708,000	-	7,401,000	693,000	10.3%	-	-
Unemployment Rate	4.0%	-	4.3%	0.3	percentage points	-	-

Seasonally Adjusted

Civilian Labor Force	168,304,000	-	171,571,000	3,267,000	1.9%	-	-
Labor Force Participation Rate	62.5%	-	62.5%	0.0	percentage points	-	-
Employment	161,183,000	-	163,741,000	2,558,000	1.6%	-	-
Unemployment	7,121,000	-	7,831,000	710,000	10.0%	-	-
Unemployment Rate	4.2%	-	4.6%	0.4	percentage points	-	-

BUSINESS SURVEY - Not Seasonally Adjusted

Estimated Nonfarm Employment by Industry*

(numbers in thousands)

	November 2024	October 2025	November 2025	Annual Change		Monthly Change	
				Net Change	% Change	Net Change	% Change
Total Nonfarm	3,415.9	3,421.6	3,442.1	26.2	0.8%	20.5	0.6%
Total Private	2,945.9	2,949.1	2,966.1	20.2	0.7%	17.0	0.6%
Goods Producing	535.5	530.2	531.6	-3.9	-0.7%	1.4	0.3%
Mining, Logging and Construction	169.9	168.7	169.6	-0.3	-0.2%	0.9	0.5%
Manufacturing	365.6	361.5	362.0	-3.6	-1.0%	0.5	0.1%
Durable Goods	236.7	237.1	238.0	1.3	0.5%	0.9	0.4%
Wood Product Manufacturing	13.3	13.3	13.3	0.0	0.0%	0.0	0.0%
Nonmetallic Mineral Product Manufacturing	15.4	15.4	15.5	0.1	0.6%	0.1	0.6%
Primary Metal Manufacturing	11.2	11.3	11.3	0.1	0.9%	0.0	0.0%
Fabricated Metal Product Manufacturing	42.9	43.4	43.5	0.6	1.4%	0.1	0.2%
Machinery Manufacturing	25.1	25.3	25.3	0.2	0.8%	0.0	0.0%
Computer and Electronic Product Manufacturing	7.8	8.0	8.0	0.2	2.6%	0.0	0.0%
Electrical Equipment, Appliance, and Component Manufacturing	22.2	22.4	22.5	0.3	1.4%	0.1	0.4%
Transportation Equipment Manufacturing	74.6	73.8	74.3	-0.3	-0.4%	0.5	0.7%
Furniture and Related Product Manufacturing	9.1	9.1	9.1	0.0	0.0%	0.0	0.0%
Miscellaneous Manufacturing	15.1	15.1	15.2	0.1	0.7%	0.1	0.7%
Non-Durable Goods	128.9	124.4	124.0	-4.9	-3.8%	-0.4	-0.3%
Food Manufacturing	41.1	39.9	40.0	-1.1	-2.7%	0.1	0.3%
Beverage and Tobacco Product Manufacturing	7.0	6.7	6.7	-0.3	-4.3%	0.0	0.0%
Paper Manufacturing	12.6	12.1	12.1	-0.5	-4.0%	0.0	0.0%
Printing and Related Support Activities	7.7	7.5	7.5	-0.2	-2.6%	0.0	0.0%
Chemical Manufacturing	27.1	26.2	26.1	-1.0	-3.7%	-0.1	-0.4%
Plastics and Rubber Products Manufacturing	24.1	22.2	22.3	-1.8	-7.5%	0.1	0.5%
Service-Providing	2,880.4	2,891.4	2,910.5	30.1	1.0%	19.1	0.7%
Private Service Providing	2,410.4	2,418.9	2,434.5	24.1	1.0%	15.6	0.6%
Trade, Transportation, and Utilities	708.0	700.3	709.8	1.8	0.3%	9.5	1.4%
Wholesale Trade	138.1	138.6	139.1	1.0	0.7%	0.5	0.4%
Merchant Wholesalers, Durable Goods	81.5	82.3	83.0	1.5	1.8%	0.7	0.9%
Merchant Wholesalers, Nondurable Goods	49.6	49.5	49.3	-0.3	-0.6%	-0.2	-0.4%
Wholesale Trade Agents and Brokers	7.0	6.8	6.8	-0.2	-2.9%	0.0	0.0%
Retail Trade	351.4	349.5	355.1	3.7	1.1%	5.6	1.6%
Motor Vehicle and Parts Dealers	48.4	49.9	49.8	1.4	2.9%	-0.1	-0.2%
Building Material and Garden Equipment and Supplies Dealers	33.5	33.0	33.1	-0.4	-1.2%	0.1	0.3%
Food and Beverage Retailers	61.4	61.3	62.1	0.7	1.1%	0.8	1.3%
Furniture, Home Furnishings, Electronics, and Appliance Retailers	18.8	18.4	18.8	0.0	0.0%	0.4	2.2%
General Merchandise Retailers	81.2	81.0	83.1	1.9	2.3%	2.1	2.6%
Health and Personal Care Retailers	23.8	23.4	23.4	-0.4	-1.7%	0.0	0.0%
Gasoline Stations and Fuel Dealers	26.4	26.5	26.7	0.3	1.1%	0.2	0.8%
Clothing, Clothing Accessories, Shoe, and Jewelry Retailers	24.2	23.1	24.3	0.1	0.4%	1.2	5.2%
Sporting Goods, Hobby, Musical Instrument, Book, & Misc Retailers	33.7	32.9	33.8	0.1	0.3%	0.9	2.7%
Transportation, Warehousing, and Utilities	218.5	212.2	215.6	-2.9	-1.3%	3.4	1.6%
Utilities	4.5	4.5	4.5	0.0	0.0%	0.0	0.0%
Transportation and Warehousing	214.0	207.7	211.1	-2.9	-1.4%	3.4	1.6%
Information	54.6	54.2	54.0	-0.6	-1.1%	-0.2	-0.4%
Financial Activities	193.1	192.0	191.9	-1.2	-0.6%	-0.1	-0.1%
Finance and Insurance	149.0	148.1	148.3	-0.7	-0.5%	0.2	0.1%
Real Estate and Rental and Leasing	44.1	43.9	43.6	0.9	2.0%	-0.3	-0.7%
Professional and Business Services	452.1	459.9	461.9	1.9	0.4%	2.0	0.4%
Professional, Scientific, and Technical Services	178.5	185.1	185.2	2.9	1.6%	0.1	0.1%
Management of Companies and Enterprises	58.3	57.5	57.8	3.9	6.7%	0.3	0.5%
Administrative and Support and Waste Services	215.3	217.3	218.9	2.4	1.1%	1.6	0.7%
Private Education and Health Services	500.6	500.6	504.6	3.4	0.7%	4.0	0.8%
Private Educational Services	71.7	72.9	73.4	4.4	6.1%	0.5	0.7%
Health Care and Social Assistance	428.9	427.7	431.2	5.4	1.3%	3.5	0.8%
Ambulatory Health Care Services	178.4	174.6	175.8	6.4	3.6%	1.2	0.7%
Hospitals	126.9	128.8	129.5	7.4	5.8%	0.7	0.5%
Nursing and Residential Care Facilities	63.4	65.2	66.4	8.4	13.2%	1.2	1.8%
Social Assistance	60.2	59.1	59.5	-0.7	-1.2%	0.4	0.7%
Leisure and Hospitality	368.9	375.3	373.9	5.0	1.4%	-1.4	-0.4%
Arts, Entertainment, and Recreation	49.8	51.2	49.7	-0.1	-0.2%	-1.5	-2.9%
Accommodation and Food Services	319.1	324.1	324.2	5.1	1.6%	0.1	0.0%
Accommodation	37.7	37.8	36.5	-1.2	-3.2%	-1.3	-3.4%
Food Services and Drinking Places	281.4	286.3	287.7	6.3	2.2%	1.4	0.5%
Other Services	133.1	136.6	138.4	5.3	4.0%	1.8	1.3%
Government	470.0	472.5	476.0	6.0	1.3%	3.5	0.7%
Federal Government	59.2	55.6	55.9	-3.3	-5.6%	0.3	0.5%
State Government	106.8	112.0	113.2	6.4	6.0%	1.2	1.1%
State Government Educational Services	64.2	68.3	69.4	5.2	8.1%	1.1	1.6%
State Government Excluding Education	42.6	43.7	43.8	1.2	2.8%	0.1	0.2%
Local Government	304.0	304.9	306.9	2.9	1.0%	2.0	0.7%
Local Government Education Services	153.7	154.2	155.2	1.5	1.0%	1.0	0.6%
Local Government excluding Educational Services	85.6	88.4	88.5	2.9	3.4%	0.1	0.1%

* Estimates include all full- and part-time nonagricultural wage and salary employees who worked during, or received pay for, any part of the pay period which include the 12th of the month. This is a count of jobs by place of work. Agricultural workers, proprietors, self-employed persons, workers in private households, and unpaid family workers are excluded.

Seasonally Adjusted Nonfarm Employment

(numbers in thousands)

	November 2024	October 2025	November 2025	Annual Change		Monthly Change	
				November 2024 to November 2025		October 2025 to November 2025	
				Net Change	% Change	Net Change	% Change
Total Nonfarm	3,382.7	3,409.9	3,417.5	34.8	1.0%	7.6	0.2%
Mining, Logging and Construction	169.5	168.8	168.7	-0.8	-0.5%	-0.1	-0.1%
Mining and logging	4.5	4.5	4.6	0.1	2.2%	0.1	2.2%
Construction	165.0	164.3	164.1	-0.9	-0.5%	-0.2	-0.1%
Manufacturing	364.2	362.5	362.5	-1.7	-0.5%	0.0	0.0%
Durable Goods	235.7	237.8	238.5	2.8	1.2%	0.7	0.3%
Non-Durable Goods	128.5	124.7	124.0	-4.5	-3.5%	-0.7	-0.6%
Trade, Transportation, and Utilities	694.5	702.3	702.8	8.3	1.2%	0.5	0.1%
Wholesale Trade	137.3	138.9	139.0	1.7	1.2%	0.1	0.1%
Retail Trade	344.7	351.1	351.9	7.2	2.1%	0.8	0.2%
Transportation, Warehousing, and Utilities	212.5	212.3	211.9	-0.6	-0.3%	-0.4	-0.2%
Information	53.8	54.2	53.7	-0.1	-0.2%	-0.5	-0.9%
Financial Activities	192.9	191.1	190.9	-2.0	-1.0%	-0.2	-0.1%
Finance and Insurance	148.8	147.4	147.3	-1.5	-1.0%	-0.1	-0.1%
Real Estate and Rental and Leasing	44.1	43.7	43.6	-0.5	-1.1%	-0.1	-0.2%
Professional and Business Services	448.7	456.5	458.0	9.3	2.1%	1.5	0.3%
Professional, Scientific, and Technical Services	179.2	185.6	185.3	6.1	3.4%	-0.3	-0.2%
Management of Companies and Enterprises	57.9	57.5	57.6	-0.3	-0.5%	0.1	0.2%
Administrative, Support and Waste Services	211.6	213.4	215.1	3.5	1.7%	1.7	0.8%
Private Education and Health Services	496.9	498.1	500.7	3.8	0.8%	2.6	0.5%
Private Educational Services	68.5	70.2	70.4	1.9	2.8%	0.2	0.3%
Health Care and Social Assistance	428.4	427.9	430.3	1.9	0.4%	2.4	0.6%
Leisure and Hospitality	370.2	376.7	377.3	7.1	1.9%	0.6	0.2%
Arts, Entertainment, and Recreation	51.6	51.4	51.8	0.2	0.4%	0.4	0.8%
Accommodation and Food Services	318.6	325.3	325.5	6.9	2.2%	0.2	0.1%
Other Services	133.0	137.2	139.0	6.0	4.5%	1.8	1.3%
Government	459.0	462.5	463.9	4.9	1.1%	1.4	0.3%
Federal Government	58.9	55.6	55.9	-3.0	-5.1%	0.3	0.5%
State Government	101.6	107	107.5	5.9	5.8%	0.5	0.5%
Local Government	298.5	299.9	300.5	2.0	0.7%	0.6	0.2%

Major Changes in Seasonally Adjusted Nonfarm Employment (in thousands)

Monthly Change from October 2025 to November 2025

Major Employment Increases	October 2025	November 2025	Change
Private Education and Health Services	498.1	500.7	2.6
Other Services	137.2	139.0	1.8
Administrative, Support, and Waste Services	213.4	215.1	1.7
Major Employment Decreases			
Non-Durable Goods Manufacturing	124.7	124.0	-0.7
Information	54.2	53.7	-0.5
Transportation, Warehousing, and Utilities	212.3	211.9	-0.4

Yearly Change from November 2024 to November 2025

Major Employment Increases	November 2024	November 2025	Change
Professional and Business Services	448.7	458.0	9.3
Trade, Transportation, and Utilities	694.5	702.8	8.3
Leisure and Hospitality	370.2	377.3	7.1
Major Employment Decreases			
Non-Durable Goods Manufacturing	128.5	124.0	-4.5
Federal Government	58.9	55.9	-3.0
Financial Activities	192.9	190.9	-2.0

Hours and Earnings of Production Workers (Manufacturing)

Tennessee	Average Weekly Earnings			Average Weekly Hours			Average Hourly Earnings		
	Nov. 2024	Oct. 2025	Nov. 2025	Nov. 2024	Oct. 2025	Nov. 2025	Nov. 2024	Oct. 2025	Nov. 2025
Manufacturing	\$1,002.04	\$1,040.38	\$1,024.99	41.0	41.9	41.7	\$24.44	\$24.83	\$24.58
Durable Goods	\$1,068.53	\$1,061.91	\$1,048.37	41.4	41.4	41.0	\$25.81	\$25.65	\$25.57
Non-durable Goods	\$875.78	\$1,001.04	\$981.50	40.1	43.0	43.2	\$21.84	\$23.28	\$22.72

HOURS AND EARNINGS OF PRODUCTION WORKERS - ALL MANUFACTURING

November 2025 preliminary average hours and earnings

	Average Weekly Earnings			Average Weekly Hours			Average Hourly Earnings		
	Nov. 2024	Nov. 2025	Pct. Change	Nov. 2024	Nov. 2025	Pct. Change	Nov. 2024	Nov. 2025	Pct. Change
Alabama	\$1,050.93	\$1,165.84	10.9%	41.1	44.6	8.5%	\$25.57	\$26.14	2.2%
Arkansas	\$843.12	\$941.66	11.7%	36.0	39.4	9.4%	\$23.42	\$23.90	2.0%
Florida	\$1,242.54	\$1,263.26	1.7%	40.5	41.5	2.5%	\$30.68	\$30.44	-0.8%
Georgia	\$995.90	\$1,020.86	2.5%	40.5	40.9	1.0%	\$24.59	\$24.96	1.5%
Kentucky	\$1,122.75	\$1,161.59	3.5%	41.8	42.8	2.4%	\$26.86	\$27.14	1.0%
Mississippi	\$921.38	\$953.47	3.5%	40.2	41.6	3.5%	\$22.92	\$22.92	0.0%
North Carolina	\$944.07	\$932.40	-1.2%	39.7	40.0	0.8%	\$23.78	\$23.31	-2.0%
South Carolina	\$1,067.86	\$1,155.07	8.2%	40.1	40.6	1.2%	\$26.63	\$28.45	6.8%
Tennessee	\$1,002.04	\$1,024.99	2.3%	41.0	41.7	1.7%	\$24.44	\$24.58	0.6%
Virginia	\$1,068.80	\$1,130.22	5.7%	39.6	39.0	-1.5%	\$26.99	\$28.98	7.4%

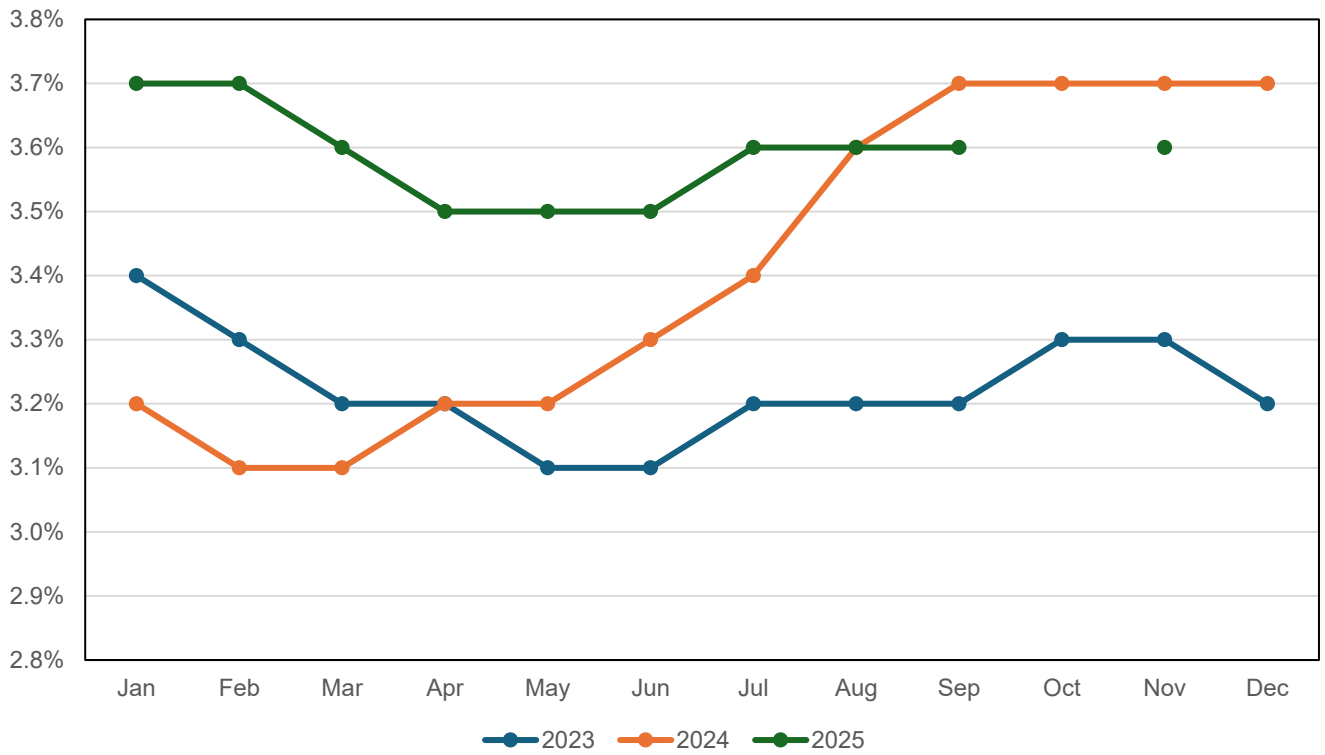
UNEMPLOYMENT RATES, 2014-2025
U.S. & Tennessee, Seasonally Adjusted & Not Seasonally Adjusted

	2014				2015				2016				2017			
	U.S.		TN		U.S.		TN		U.S.		TN		U.S.		TN	
	Seas. Adj.	Not Seas. Adj.	Seas. Adj.	Not Seas. Adj.	Seas. Adj.	Not Seas. Adj.	Seas. Adj.	Not Seas. Adj.	Seas. Adj.	Not Seas. Adj.	Seas. Adj.	Not Seas. Adj.	Seas. Adj.	Not Seas. Adj.	Seas. Adj.	Not Seas. Adj.
Jan	6.6	7.0	6.9	7.0	5.7	6.1	6.1	6.5	4.8	5.3	4.8	5.0	4.7	5.1	4.5	5.0
Feb	6.7	7.0	6.8	7.0	5.5	5.8	6.0	6.1	4.9	5.2	4.7	4.8	4.6	4.9	4.3	4.5
Mar	6.7	6.8	6.7	6.8	5.4	5.6	5.9	5.8	5.0	5.1	4.7	4.7	4.4	4.6	4.1	4.1
Apr	6.2	5.9	6.7	6.0	5.4	5.1	5.8	5.3	5.1	4.7	4.7	4.3	4.4	4.1	3.9	3.4
May	6.3	6.1	6.7	6.3	5.6	5.3	5.7	5.6	4.8	4.5	4.7	4.2	4.4	4.1	3.7	3.3
Jun	6.1	6.3	6.6	7.1	5.3	5.5	5.6	6.1	4.9	5.1	4.7	5.2	4.3	4.5	3.6	4.1
Jul	6.2	6.5	6.6	7.2	5.2	5.6	5.5	5.9	4.8	5.1	4.7	5.1	4.3	4.6	3.5	3.9
Aug	6.1	6.3	6.5	6.7	5.1	5.2	5.4	5.4	4.9	5.0	4.8	4.9	4.4	4.5	3.4	3.6
Sep	5.9	5.7	6.5	6.4	5.0	4.9	5.3	5.2	5.0	4.8	4.8	4.9	4.3	4.1	3.4	3.3
Oct	5.7	5.5	6.4	6.1	5.0	4.8	5.1	5.1	4.9	4.7	4.8	4.7	4.2	3.9	3.4	3.3
Nov	5.8	5.5	6.3	6.1	5.1	4.8	5.0	4.9	4.7	4.4	4.8	4.4	4.2	3.9	3.5	3.3
Dec	5.6	5.4	6.2	5.9	5.0	4.8	4.9	4.7	4.7	4.5	4.7	4.5	4.1	3.9	3.5	3.2
Avg		6.2		6.5		5.3		5.5		4.9		4.7		4.4		3.7

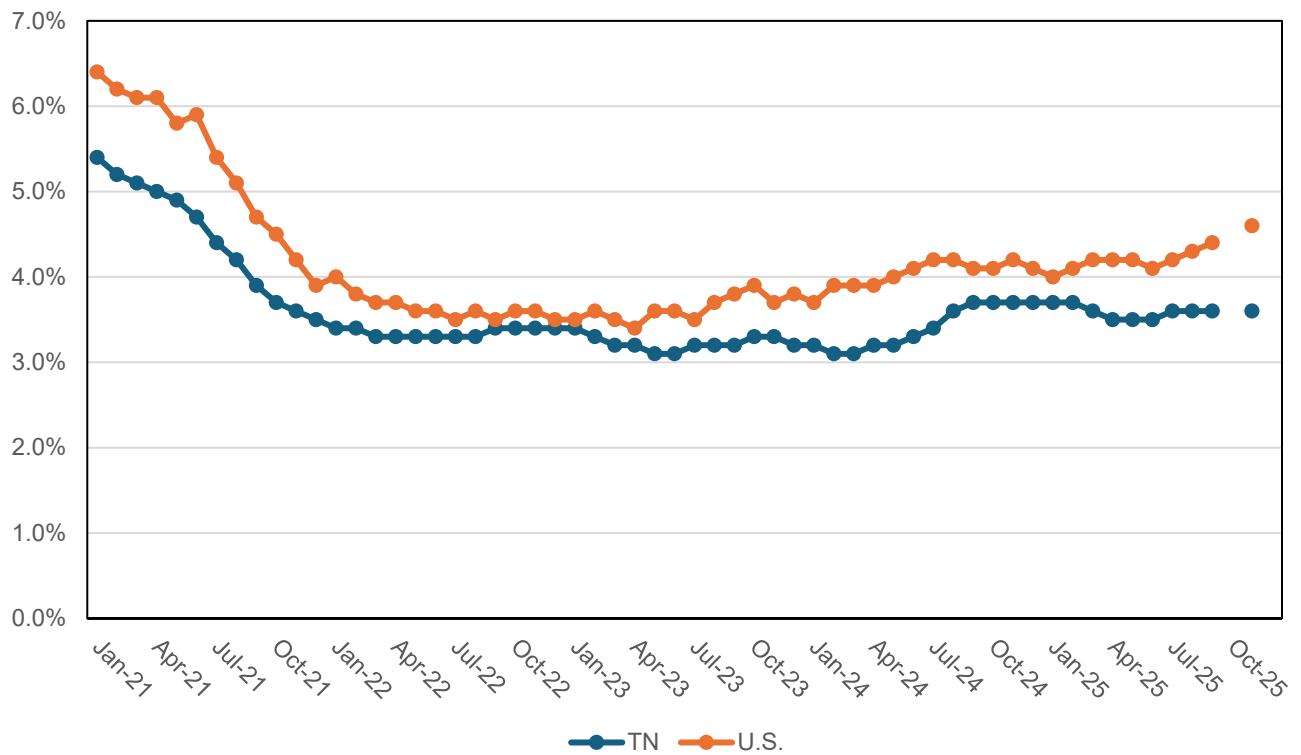
	2018				2019				2020				2021			
	U.S.		TN		U.S.		TN		U.S.		TN		U.S.		TN	
	Seas. Adj.	Not Seas. Adj.	Seas. Adj.	Not Seas. Adj.	Seas. Adj.	Not Seas. Adj.	Seas. Adj.	Not Seas. Adj.	Seas. Adj.	Not Seas. Adj.	Seas. Adj.	Not Seas. Adj.	Seas. Adj.	Not Seas. Adj.	Seas. Adj.	Not Seas. Adj.
Jan	4.0	4.5	3.5	3.9	4.0	4.4	3.5	3.9	3.6	4.0	3.4	3.7	6.4	6.8	5.4	5.7
Feb	4.1	4.4	3.5	3.6	3.8	4.1	3.4	3.4	3.5	3.8	3.5	3.4	6.2	6.6	5.2	5.3
Mar	4.0	4.1	3.5	3.5	3.8	3.9	3.4	3.4	4.4	4.5	3.5	3.9	6.1	6.2	5.1	5.1
Apr	4.0	3.7	3.5	3.0	3.7	3.3	3.4	2.9	14.8	14.4	15.7	15.0	6.1	5.7	5.0	4.7
May	3.8	3.6	3.5	3.1	3.6	3.4	3.3	3.1	13.2	13.0	12.1	11.8	5.8	5.5	4.9	4.6
Jun	4.0	4.2	3.5	4.1	3.6	3.8	3.2	3.8	11.0	11.2	10.2	10.8	5.9	6.1	4.7	5.6
Jul	3.8	4.1	3.5	3.9	3.7	4.0	3.2	3.7	10.2	10.5	9.0	10.1	5.4	5.7	4.4	4.9
Aug	3.8	3.9	3.5	3.6	3.6	3.8	3.2	3.3	8.4	8.5	7.6	7.7	5.1	5.3	4.2	4.4
Sep	3.7	3.6	3.5	3.4	3.5	3.3	3.3	3.1	7.8	7.7	7.1	6.9	4.7	4.6	3.9	3.8
Oct	3.8	3.5	3.5	3.4	3.6	3.3	3.3	3.3	6.9	6.6	6.3	5.9	4.5	4.3	3.7	3.5
Nov	3.8	3.5	3.5	3.1	3.6	3.3	3.4	3.1	6.7	6.4	5.9	5.4	4.2	3.9	3.6	3.2
Dec	3.9	3.7	3.5	3.2	3.6	3.4	3.4	3.1	6.7	6.5	5.6	5.4	3.9	3.7	3.5	3.0
Avg		3.9		3.5		3.7		3.3		8.1		7.4		5.3		4.5

	2022				2023				2024				2025			
	U.S.		TN		U.S.		TN		U.S.		TN		U.S.		TN	
	Seas. Adj.	Not Seas. Adj.	Seas. Adj.	Not Seas. Adj.	Seas. Adj.	Not Seas. Adj.	Seas. Adj.	Not Seas. Adj.	Seas. Adj.	Not Seas. Adj.	Seas. Adj.	Not Seas. Adj.	Seas. Adj.	Not Seas. Adj.	Seas. Adj.	Not Seas. Adj.
Jan	4.0	4.4	3.4	3.7	3.5	3.9	3.4	3.6	3.7	4.1	3.2	3.3	4.0	4.4	3.7	3.8
Feb	3.8	4.1	3.4	3.4	3.6	3.9	3.3	3.4	3.9	4.2	3.1	3.1	4.1	4.5	3.7	3.5
Mar	3.7	3.8	3.3	3.2	3.5	3.6	3.2	3.2	3.9	3.9	3.1	3.1	4.2	4.2	3.6	3.3
Apr	3.7	3.3	3.3	3.0	3.4	3.1	3.2	2.7	3.9	3.5	3.2	2.8	4.2	3.9	3.5	2.9
May	3.6	3.4	3.3	3.1	3.6	3.4	3.1	3.1	4.0	3.7	3.2	2.9	4.2	4.0	3.5	3.3
Jun	3.6	3.8	3.3	4.0	3.6	3.8	3.1	3.7	4.1	4.3	3.3	3.9	4.1	4.4	3.5	4.0
Jul	3.5	3.8	3.3	3.7	3.5	3.8	3.2	3.5	4.2	4.5	3.4	3.9	4.2	4.6	3.6	4.4
Aug	3.6	3.8	3.3	3.5	3.7	3.9	3.2	3.3	4.2	4.4	3.6	3.7	4.3	4.5	3.6	3.6
Sep	3.5	3.3	3.4	3.2	3.8	3.6	3.2	3.3	4.1	3.9	3.7	3.5	4.4	4.3	3.6	3.5
Oct	3.6	3.4	3.4	3.4	3.9	3.6	3.3	3.3	4.1	3.9	3.7	3.6	-	-	-	-
Nov	3.6	3.4	3.4	3.2	3.7	3.5	3.3	3.0	4.2	4.0	3.7	3.7	4.6	4.3	3.6	3.7
Dec	3.5	3.3	3.4	3.0	3.8	3.5	3.2	2.9	4.1	3.8	3.7	3.5				
Avg		3.6		3.4		3.6		3.2		4.0		3.4				

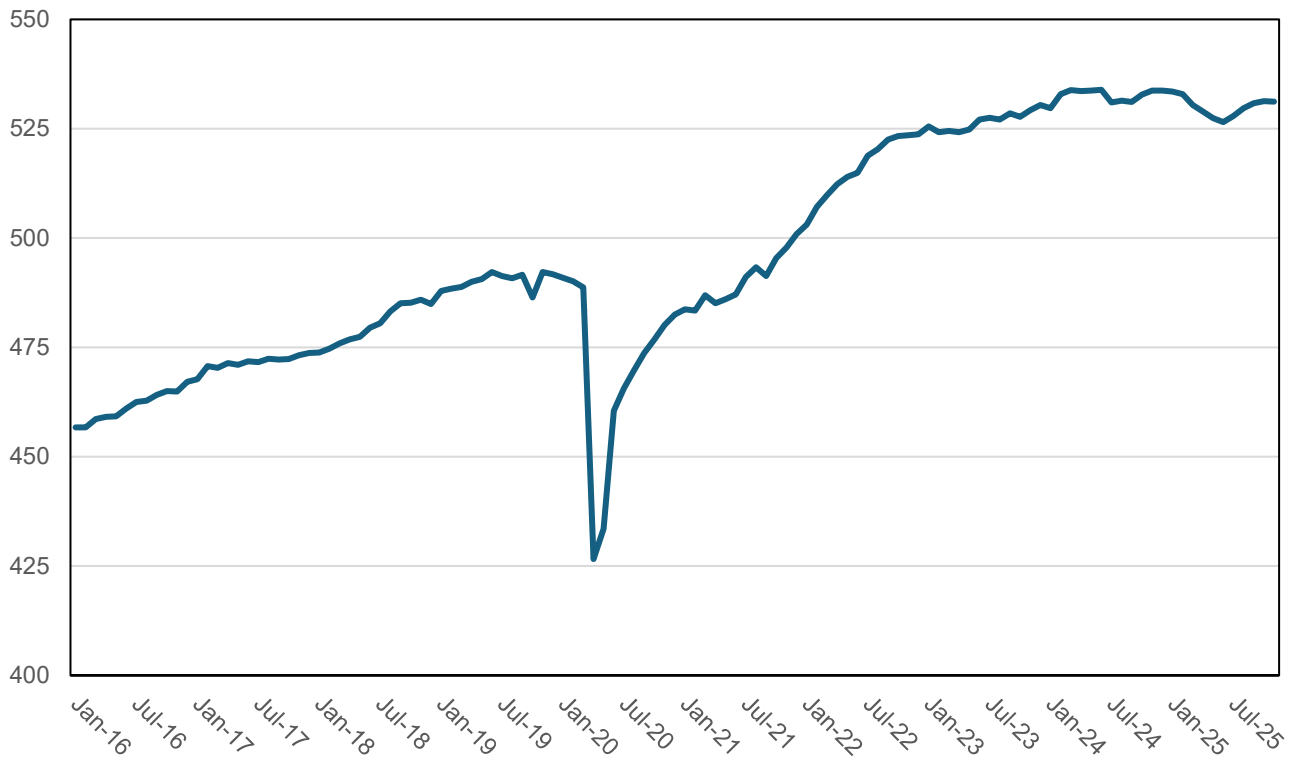
Tennessee Unemployment Rates 2023-2025



Tennessee & U.S. Unemployment Rates 2021-2025



Goods-Producing Jobs in Tennessee (in thousands)



Service-Providing Jobs in Tennessee (in thousands)

