

TENNESSEE ECONOMIC ANALYSIS

March 2025

NOT TO BE RELEASED BEFORE:

TIME: 1:30 PM CT

DAY: Thursday, April 17, 2025

Prepared by:

Tennessee Department of Labor and Workforce Development

Workforce Insights, Research and Reporting Engine Division

Table of Contents

Economic Indicators

	<u>Page</u>
Briefing Packet Summary	1
Labor Force Estimates Summary - Household Survey	2
Seasonally Adjusted Nonfarm Employment	3
Major Changes in Seasonally Adjusted Nonfarm Employment	3
Business Survey - Not Seasonally Adjusted	4-5

Appendix

Unemployment Rates, 2014 - 2025	6
Hours and Earnings of Production Workers	7

Graphs

Tennessee Unemployment Rates	8
Unemployment Rates - U.S. and Tennessee	8
Goods - Producing Jobs in Tennessee	9
Service - Providing Jobs in Tennessee	9

BRIEFING PACKET SUMMARY

March 2025 pre.

Unemployment Rates

Tennessee	March 2024	February 2025 rev.	March 2025 pre.	Change From:	
				Year Ago	Month Ago
Not Seasonally Adjusted	3.1%	3.5%	3.3%	0.2%	-0.2%
Seasonally Adjusted	3.1%	3.7%	3.6%	0.5%	-0.1%

United States

Not Seasonally Adjusted	3.9%	4.5%	4.2%	0.3%	-0.3%
Seasonally Adjusted	3.9%	4.1%	4.2%	0.3%	0.1%

Hours and Earnings of Production Workers (Manufacturing)

Tennessee	February 2025 rev.	March 2025 pre.	Change
Average Weekly Earnings	\$1015.98	\$1001.63	-\$14.35
Average Weekly Hours	41.3	41.0	-0.3
Average Hourly Earnings	\$24.60	\$24.43	-\$0.17

United States

Average Weekly Earnings	\$1166.88	\$1191.50	\$24.62
Average Weekly Hours	40.8	41.2	0.4
Average Hourly Earnings	\$28.60	\$28.92	\$0.32

Summary

Over the month, Tennessee's seasonally adjusted unemployment rate decreased to 3.6% from February's 3.7%.

Over the past year, Tennessee's seasonally adjusted unemployment rate increased to 3.6% from 3.1%.

Over the month, total nonfarm employment decreased by 1,300 jobs. The largest decreases were in Financial Activities, Education & Health Services, and Manufacturing.

Over the year, nonfarm employment increased by 8,700 jobs. The largest increases were in Government, Leisure & Hospitality, and Trade, Transportation, & Utilities.

Tennessee* Not Seasonally Adjusted	March 2024	Revised February 2024	Preliminary March 2025	Change from March 2024 to March 2025		Change from February 2025 to March 2025	
Civilian Labor Force	3,418,376	3,436,702	3,464,857	46,481	1.4%	28,155	0.8%
Labor Force Participation Rate	59.8%	59.4%	59.9%	0.1	percentage points	0.5	percentage points
Employment	3,311,916	3,317,587	3,351,296	39,380	1.2%	33,709	1.0%
Unemployment	106,460	119,115	113,561	7,101	6.7%	-5,554	-4.7%
Unemployment Rate	3.1%	3.5%	3.3%	0.2	percentage points	-0.2	percentage points

Seasonally Adjusted

Civilian Labor Force	3,405,989	3,444,318	3,448,697	42,708	1.3%	4,379	0.1%
Labor Force Participation Rate	59.6%	59.6%	59.6%	0.0	percentage points	0.0	percentage points
Employment	3,299,746	3,316,975	3,323,681	23,935	0.7%	6,706	0.2%
Unemployment	106,243	127,343	125,016	18,773	17.7%	-2,327	-1.8%
Unemployment Rate	3.1%	3.7%	3.6%	0.5	percentage points	-0.1	percentage points

United States** Not Seasonally Adjusted	March 2024	Revised February 2025	Preliminary March 2025	Change from March 2024 to March 2025		Change from February 2025 to March 2025	
Civilian Labor Force	167,960,000	170,116,000	170,653,000	2,693,000	1.6%	537,000	0.3%
Labor Force Participation Rate	62.7%	62.3%	62.5%	-0.2	percentage points	0.2	percentage points
Employment	161,356,000	162,544,000	163,412,000	2,056,000	1.3%	868,000	0.5%
Unemployment	6,604,000	7,572,000	7,242,000	638,000	9.7%	-330,000	-4.4%
Unemployment Rate	3.9%	4.5%	4.2%	0.3	percentage points	-0.3	percentage points

Seasonally Adjusted

Civilian Labor Force	167,922,000	170,359,000	170,591,000	2,669,000	1.6%	232,000	0.1%
Labor Force Participation Rate	62.7%	62.4%	62.5%	-0.2	percentage points	0.1	percentage points
Employment	161,425,000	163,307,000	163,508,000	2,083,000	1.3%	201,000	0.1%
Unemployment	6,497,000	7,052,000	7,083,000	586,000	9.0%	31,000	0.4%
Unemployment Rate	3.9%	4.1%	4.2%	0.3	percentage points	0.1	percentage points

Seasonally Adjusted Nonfarm Employment

(numbers in thousands)

Annual Change Monthly Change

	March 2024	February 2025 rev.	March 2025 pre.	March 2024 to March 2025		February 2025 to March 2025	
				Net Chg.	% chg.	Net Chg.	% chg.
				Total Non-Farm	3,374.5	3,384.5	3,383.2
Mining, Logging and Construction	167.6	167.6	166.7	-0.9	-0.5%	-0.9	-0.5%
Mining and Logging	4.3	4.6	4.5	0.2	4.7%	-0.1	-2.2%
Construction	163.3	163.0	162.2	-1.1	-0.7%	-0.8	-0.5%
Manufacturing	366.2	365.3	364.3	-1.9	-0.5%	-1.0	-0.3%
Durable Goods Manufacturing	235.6	237.3	236.8	1.2	0.5%	-0.5	-0.2%
Non-Durable Goods Manufacturing	130.6	128.0	127.5	-3.1	-2.4%	-0.5	-0.4%
Trade, Transportation, and Utilities	693.5	695.5	696.8	3.3	0.5%	1.3	0.2%
Wholesale Trade	136.5	137.7	137.6	1.1	0.8%	-0.1	-0.1%
Retail Trade	345.5	347.0	348.1	2.6	0.8%	1.1	0.3%
Transportation, Warehousing, and Utilities	211.5	210.8	211.1	-0.4	-0.2%	0.3	0.1%
Information	54.8	53.7	53.3	-1.5	-2.7%	-0.4	-0.7%
Financial Activities	192.5	194.0	192.7	0.2	0.1%	-1.3	-0.7%
Finance and Insurance	147.5	148.6	148.3	0.8	0.5%	-0.3	-0.2%
Real Estate, Rental, and Leasing	45.0	45.4	44.4	-0.6	-1.3%	-1.0	-2.2%
Professional and Business Services	456.7	449.9	451.4	-5.3	-1.2%	1.5	0.3%
Professional, Scientific, and Technical Services	177.8	180.5	182.6	4.8	2.7%	2.1	1.2%
Management of Companies and Enterprises	58.7	58.3	58.5	-0.2	-0.3%	0.2	0.3%
Administrative, Support, and Waste Services	220.2	211.1	210.3	-9.9	-4.5%	-0.8	-0.4%
Education and Health Services	490.5	494.0	492.8	2.3	0.5%	-1.2	-0.2%
Educational Services	69.1	68.7	68.7	-0.4	-0.6%	0.0	0.0%
Health Care and Social Assistance	421.4	425.3	424.1	2.7	0.6%	-1.2	-0.3%
Leisure and Hospitality	368.4	371.1	372.0	3.6	1.0%	0.9	0.2%
Arts, Entertainment, and Recreation	51.1	52.3	52.5	1.4	2.7%	0.2	0.4%
Accommodation and Food Services	317.3	318.8	319.5	2.2	0.7%	0.7	0.2%
Other Services	132.3	134.1	134.4	2.1	1.6%	0.3	0.2%
Government	452.0	459.3	458.8	6.8	1.5%	-0.5	-0.1%
Federal Government	58.0	59.0	58.8	0.8	1.4%	-0.2	-0.3%
State Government	99.2	102.4	102.4	3.2	3.2%	0.0	0.0%
Local Government	294.8	297.9	297.6	2.8	0.9%	-0.3	-0.1%

Major Changes in Seasonally Adjusted Nonfarm Employment (in thousands)

I. Monthly Change (from February 2025 rev. to March 2025 pre.)

	<u>February 2025 rev.</u>	<u>March 2025 pre.</u>	<u>Change</u>
A. Major Employment Increases			
Professional, Scientific, and Technical Services	180.5	182.6	2.1
Retail Trade	347.0	348.1	1.1
Accommodation and Food Services	318.8	319.5	0.7
B. Major Employment Decreases			
Financial Activities	194.0	192.7	-1.3
Education and Health Services	494.0	492.8	-1.2
Manufacturing	365.3	364.3	-1.0

II. Yearly Change (from March 2024 to March 2025 pre.)

	<u>March 2024</u>	<u>March 2025 pre.</u>	<u>Change</u>
A. Major Employment Increases			
Government	452.0	458.8	6.8
Leisure and Hospitality	368.4	372.0	3.6
Trade, Transportation, and Utilities	693.5	696.8	3.3
B. Major Employment Decreases			
Administrative, Support, and Waste Services	220.2	210.3	-9.9
Non-Durable Goods Manufacturing	130.6	127.5	-3.1
Construction	163.3	162.2	-1.1

BUSINESS SURVEY - Not Seasonally Adjusted

Estimated Nonfarm Employment by Industry*

(numbers in thousands)	March 2024	February 2025 rev.	March 2025 pre.	Annual Change		Monthly Change	
				March 2024 to March 2025		February 2025 to March 2025	
				Net Chg.	% chg.	Net Chg.	% chg.
Total Non-Farm	3,369.8	3,366.2	3,375.2	5.4	0.2%	9.0	0.3%
Total Private	2,908.9	2,900.4	2,908.0	-0.9	0.0%	7.6	0.3%
Goods Producing	532.8	530.6	529.7	-3.1	-0.6%	-0.9	-0.2%
Mining, Logging and Construction	166.4	164.5	164.8	-1.6	-1.0%	0.3	0.2%
Manufacturing	366.4	366.1	364.9	-1.5	-0.4%	-1.2	-0.3%
Durable Goods Manufacturing	235.7	237.9	237.2	1.5	0.6%	-0.7	-0.3%
Wood Products	13.6	13.4	13.3	-0.3	-2.2%	-0.1	-0.7%
Non-Metallic Mineral Products	15.3	15.4	15.3	0.0	0.0%	-0.1	-0.6%
Primary Metal Products	11.0	11.3	11.3	0.3	2.7%	0.0	0.0%
Fabricated Metal Products	42.0	43.2	43.1	1.1	2.6%	-0.1	-0.2%
Machinery Manufacturing	24.7	25.2	25.2	0.5	2.0%	0.0	0.0%
Computer and Electronic Products	7.5	7.8	7.8	0.3	4.0%	0.0	0.0%
Electrical Equipment and Appliances	21.8	22.3	22.3	0.5	2.3%	0.0	0.0%
Transportation Equipment	75.6	74.9	74.5	-1.1	-1.5%	-0.4	-0.5%
Furniture and Related Products	8.9	9.2	9.2	0.3	3.4%	0.0	0.0%
Miscellaneous Durable Manufacturing	15.3	15.2	15.2	-0.1	-0.7%	0.0	0.0%
Non-Durable Goods Manufacturing	130.7	128.2	127.7	-3.0	-2.3%	-0.5	-0.4%
Food Manufacturing	41.2	40.8	40.8	-0.4	-1.0%	0.0	0.0%
Beverage and Tobacco Products	7.0	6.8	6.8	-0.2	-2.9%	0.0	0.0%
Paper Manufacturing	12.9	12.5	12.4	-0.5	-3.9%	-0.1	-0.8%
Printing and Related Support Activities	8.0	7.7	7.6	-0.4	-5.0%	-0.1	-1.3%
Chemical Manufacturing	27.3	26.9	26.8	-0.5	-1.8%	-0.1	-0.4%
Plastics and Rubber Products	25.0	23.8	23.6	-1.4	-5.6%	-0.2	-0.8%
Service Providing	2,837.0	2,835.6	2,845.5	8.5	0.3%	9.9	0.3%
Private Service Providing (Service Providing Less Government)	2,376.1	2,369.8	2,378.3	2.2	0.1%	8.5	0.4%
Trade, Transportation, and Utilities	688.8	692.6	692.4	3.6	0.5%	-0.2	0.0%
Wholesale Trade	136.6	137.6	137.3	0.7	0.5%	-0.3	-0.2%
Merchant wholesalers, Durable Goods	80.7	81.1	80.6	-0.1	-0.1%	-0.5	-0.6%
Merchant wholesalers, Non-Durable Goods	49.0	49.6	49.8	0.8	1.6%	0.2	0.4%
Wholesale Electronic Markets	6.9	6.9	6.9	0.0	0.0%	0.0	0.0%
Retail Trade	343.3	345.7	346.6	3.3	1.0%	0.9	0.3%
Motor Vehicle and Parts Dealers	48.3	48.5	49.1	0.8	1.7%	0.6	1.2%
Furniture and Home Furnishings Stores	18.3	18.3	18.1	-0.2	-1.1%	-0.2	-1.1%
Building Material and Garden Supply Stores	34.3	33.3	35.0	0.7	2.0%	1.7	5.1%
Food and Beverage Stores	60.2	61.2	61.1	0.9	1.5%	-0.1	-0.2%
Health and Personal Care Stores	24.4	23.5	23.4	-1.0	-4.1%	-0.1	-0.4%
Gasoline Stations	25.9	26.1	26.1	0.2	0.8%	0.0	0.0%
Clothing and Clothing Accessories Stores	22.5	22.8	22.6	0.1	0.4%	-0.2	-0.9%
Sporting Goods, Hobby, Book, and Music Stores	31.9	32.8	32.7	0.8	2.5%	-0.1	-0.3%
General Merchandise Stores	77.5	79.2	78.5	1.0	1.3%	-0.7	-0.9%
Transportation, Warehousing, and Utilities	208.9	209.3	208.5	-0.4	-0.2%	-0.8	-0.4%
Utilities	4.4	4.5	4.5	0.1	2.3%	0.0	0.0%
Transportation and Warehousing	204.5	204.8	204.0	-0.5	-0.2%	-0.8	-0.4%
Information	54.6	53.6	53.3	-1.3	-2.4%	-0.3	-0.6%
Financial Activities	191.8	192.1	191.2	-0.6	-0.3%	-0.9	-0.5%
Finance and Insurance	147.2	147.9	147.4	0.2	0.1%	-0.5	-0.3%
Real Estate, Rental, and Leasing	44.6	44.2	43.8	-0.8	-1.8%	-0.4	-0.9%
Professional and Business Services	455.0	445.5	448.8	-6.2	-1.4%	3.3	0.7%
Professional, Scientific, and Technical Services	178.8	180.9	184.1	5.3	3.0%	3.2	1.8%
Management of Companies and Enterprises	58.5	58.1	58.2	-0.3	-0.5%	0.1	0.2%
Administrative, Support, and Waste Services	217.7	206.5	206.5	-11.2	-5.1%	0.0	0.0%
Education and Health Services	492.4	494.6	493.2	0.8	0.2%	-1.4	-0.3%
Educational Services	72.1	71.0	70.9	-1.2	-1.7%	-0.1	-0.1%
Health Care and Social Assistance	420.3	423.6	422.3	2.0	0.5%	-1.3	-0.3%
Ambulatory Health Care Services	174.6	175.8	175.2	0.6	0.3%	-0.6	-0.3%
Hospitals	125.0	125.1	125.1	0.1	0.1%	0.0	0.0%
Nursing and Residential Care Facilities	62.2	63.2	63.5	1.3	2.1%	0.3	0.5%
Social Assistance	58.5	59.5	58.5	0.0	0.0%	-1.0	-1.7%
Leisure and Hospitality	361.9	357.7	365.2	3.3	0.9%	7.5	2.1%
Arts, Entertainment, and Recreation	47.7	45.7	49.1	1.4	2.9%	3.4	7.4%
Accommodation and Food Services	314.2	312.0	316.1	1.9	0.6%	4.1	1.3%
Accommodation	36.8	35.8	36.3	-0.5	-1.4%	0.5	1.4%
Food Services and Drinking Places	277.4	276.2	279.8	2.4	0.9%	3.6	1.3%

Other Services	131.6	133.7	134.2	2.6	2.0%	0.5	0.4%
Government	460.9	465.8	467.2	6.3	1.4%	1.4	0.3%
Federal Government	57.9	58.8	58.7	0.8	1.4%	-0.1	-0.2%
State Government	103.6	106.3	106.6	3.0	2.9%	0.3	0.3%
State Government Educational Services	61.5	63.4	63.6	2.1	3.4%	0.2	0.3%
State Government Excluding Education	42.1	42.9	43.0	0.9	2.1%	0.1	0.2%
Local Government	299.4	300.7	301.9	2.5	0.8%	1.2	0.4%
Local Government Educational Services	152.3	152.5	152.9	0.6	0.4%	0.4	0.3%
Local Government Excluding Education	147.1	148.2	149.0	1.9	1.3%	0.8	0.5%

* Estimates include all full- and part-time nonagricultural wage and salary employees who worked during, or received pay for, any part of the pay period which include the 12th of the month. This is a count of jobs by place of work. Agricultural workers, proprietors, self-employed persons, workers in private households, and unpaid family workers are excluded.

UNEMPLOYMENT RATES, 2014-2025
U.S. & Tennessee, Seasonally Adjusted & Not Seasonally Adjusted

	2014				2015				2016				2017			
	U.S.		TN		U.S.		TN		U.S.		TN		U.S.		TN	
	Seas. Adj.	Not Seas. Adj.	Seas. Adj.	Not Seas. Adj.	Seas. Adj.	Not Seas. Adj.	Seas. Adj.	Not Seas. Adj.	Seas. Adj.	Not Seas. Adj.	Seas. Adj.	Not Seas. Adj.	Seas. Adj.	Not Seas. Adj.	Seas. Adj.	Not Seas. Adj.
Jan	6.6	7.0	6.9	7.0	5.7	6.1	6.1	6.5	4.8	5.3	4.8	5.0	4.7	5.1	4.5	5.0
Feb	6.7	7.0	6.8	7.0	5.5	5.8	6.0	6.1	4.9	5.2	4.7	4.8	4.6	4.9	4.3	4.5
Mar	6.7	6.8	6.7	6.8	5.4	5.6	5.9	5.8	5.0	5.1	4.7	4.7	4.4	4.6	4.1	4.1
Apr	6.2	5.9	6.7	6.0	5.4	5.1	5.8	5.3	5.1	4.7	4.7	4.3	4.4	4.1	3.9	3.4
May	6.3	6.1	6.7	6.3	5.6	5.3	5.7	5.6	4.8	4.5	4.7	4.2	4.4	4.1	3.7	3.3
Jun	6.1	6.3	6.6	7.1	5.3	5.5	5.6	6.1	4.9	5.1	4.7	5.2	4.3	4.5	3.6	4.1
Jul	6.2	6.5	6.6	7.2	5.2	5.6	5.5	5.9	4.8	5.1	4.7	5.1	4.3	4.6	3.5	3.9
Aug	6.1	6.3	6.5	6.7	5.1	5.2	5.4	5.4	4.9	5.0	4.8	4.9	4.4	4.5	3.4	3.6
Sep	5.9	5.7	6.5	6.4	5.0	4.9	5.3	5.2	5.0	4.8	4.8	4.9	4.3	4.1	3.4	3.3
Oct	5.7	5.5	6.4	6.1	5.0	4.8	5.1	5.1	4.9	4.7	4.8	4.7	4.2	3.9	3.4	3.3
Nov	5.8	5.5	6.3	6.1	5.1	4.8	5.0	4.9	4.7	4.4	4.8	4.4	4.2	3.9	3.5	3.3
Dec	5.6	5.4	6.2	5.9	5.0	4.8	4.9	4.7	4.7	4.5	4.7	4.5	4.1	3.9	3.5	3.2
Avg		6.2		6.5		5.3		5.5		4.9		4.7		4.4		3.7

	2018				2019				2020				2021			
	U.S.		TN		U.S.		TN		U.S.		TN		U.S.		TN	
	Seas. Adj.	Not Seas. Adj.	Seas. Adj.	Not Seas. Adj.	Seas. Adj.	Not Seas. Adj.	Seas. Adj.	Not Seas. Adj.	Seas. Adj.	Not Seas. Adj.	Seas. Adj.	Not Seas. Adj.	Seas. Adj.	Not Seas. Adj.	Seas. Adj.	Not Seas. Adj.
Jan	4.0	4.5	3.5	3.9	4.0	4.4	3.5	3.9	3.6	4.0	3.4	3.7	6.4	6.8	5.4	5.7
Feb	4.1	4.4	3.5	3.6	3.8	4.1	3.4	3.4	3.5	3.8	3.5	3.4	6.2	6.6	5.2	5.3
Mar	4.0	4.1	3.5	3.5	3.8	3.9	3.4	3.4	4.4	4.5	3.5	3.9	6.1	6.2	5.1	5.1
Apr	4.0	3.7	3.5	3.0	3.7	3.3	3.4	2.9	14.8	14.4	15.7	15.0	6.1	5.7	5.0	4.7
May	3.8	3.6	3.5	3.1	3.6	3.4	3.3	3.1	13.2	13.0	12.1	11.8	5.8	5.5	4.9	4.6
Jun	4.0	4.2	3.5	4.1	3.6	3.8	3.2	3.8	11.0	11.2	10.2	10.8	5.9	6.1	4.7	5.6
Jul	3.8	4.1	3.5	3.9	3.7	4.0	3.2	3.7	10.2	10.5	9.0	10.1	5.4	5.7	4.4	4.9
Aug	3.8	3.9	3.5	3.6	3.6	3.8	3.2	3.3	8.4	8.5	7.6	7.7	5.1	5.3	4.2	4.4
Sep	3.7	3.6	3.5	3.4	3.5	3.3	3.3	3.1	7.8	7.7	7.1	6.9	4.7	4.6	3.9	3.8
Oct	3.8	3.5	3.5	3.4	3.6	3.3	3.3	3.3	6.9	6.6	6.3	5.9	4.5	4.3	3.7	3.5
Nov	3.8	3.5	3.5	3.1	3.6	3.3	3.4	3.1	6.7	6.4	5.9	5.4	4.2	3.9	3.6	3.2
Dec	3.9	3.7	3.5	3.2	3.6	3.4	3.4	3.1	6.7	6.5	5.6	5.4	3.9	3.7	3.5	3.0
Avg		3.9		3.5		3.7		3.3		8.1		7.4		5.3		4.5

	2022				2023				2024				2025			
	U.S.		TN		U.S.		TN		U.S.		TN		U.S.		TN	
	Seas. Adj.	Not Seas. Adj.	Seas. Adj.	Not Seas. Adj.	Seas. Adj.	Not Seas. Adj.	Seas. Adj.	Not Seas. Adj.	Seas. Adj.	Not Seas. Adj.	Seas. Adj.	Not Seas. Adj.	Seas. Adj.	Not Seas. Adj.	Seas. Adj.	Not Seas. Adj.
Jan	4.0	4.4	3.4	3.7	3.5	3.9	3.4	3.6	3.7	4.1	3.2	3.3	4.0	4.4	3.7	3.8
Feb	3.8	4.1	3.4	3.4	3.6	3.9	3.3	3.4	3.9	4.2	3.1	3.1	4.1	4.5	3.7	3.5
Mar	3.7	3.8	3.3	3.2	3.5	3.6	3.2	3.2	3.9	3.9	3.1	3.1	4.2	4.2	3.6	3.3
Apr	3.7	3.3	3.3	3.0	3.4	3.1	3.2	2.7	3.9	3.5	3.2	2.8				
May	3.6	3.4	3.3	3.1	3.6	3.4	3.1	3.1	4.0	3.7	3.2	2.9				
Jun	3.6	3.8	3.3	4.0	3.6	3.8	3.1	3.7	4.1	4.3	3.3	3.9				
Jul	3.5	3.8	3.3	3.7	3.5	3.8	3.2	3.5	4.2	4.5	3.4	3.9				
Aug	3.6	3.8	3.3	3.5	3.7	3.9	3.2	3.3	4.2	4.4	3.6	3.7				
Sep	3.5	3.3	3.4	3.2	3.8	3.6	3.2	3.3	4.1	3.9	3.7	3.5				
Oct	3.6	3.4	3.4	3.4	3.9	3.6	3.3	3.3	4.1	3.9	3.7	3.6				
Nov	3.6	3.4	3.4	3.2	3.7	3.5	3.3	3.0	4.2	4.0	3.7	3.7				
Dec	3.5	3.3	3.4	3.0	3.8	3.5	3.2	2.9	4.1	3.8	3.7	3.5				
Avg		3.6		3.4		3.6		3.2		4.0		3.4				

HOURS AND EARNINGS OF PRODUCTION WORKERS

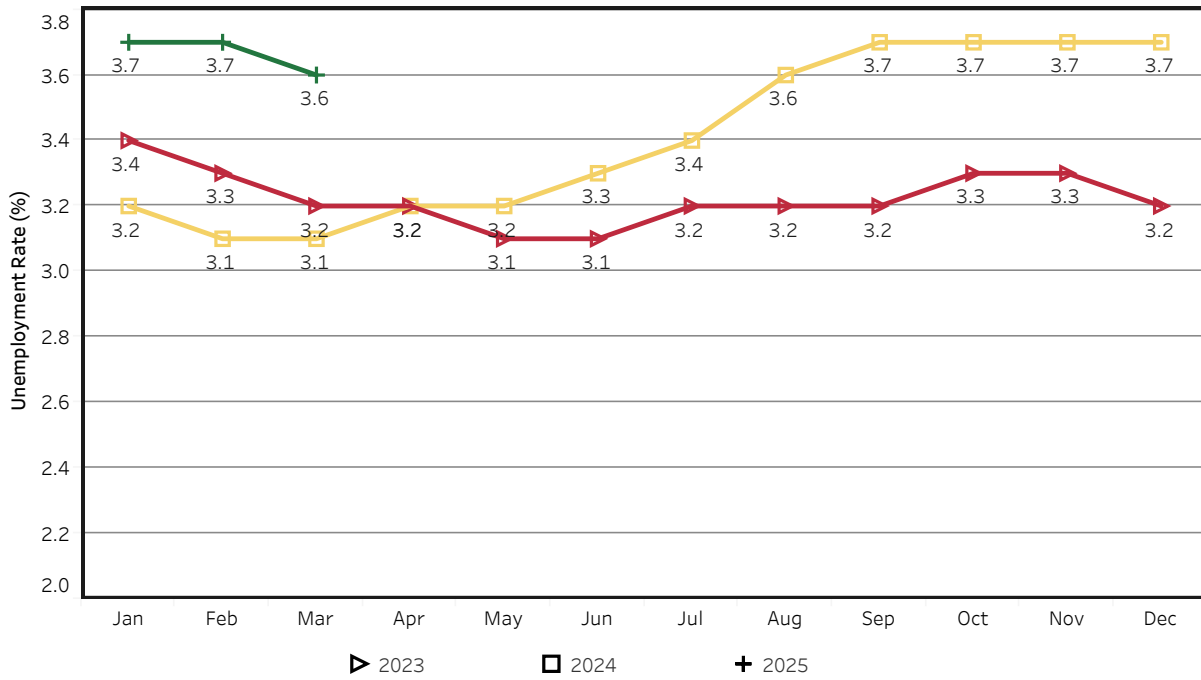
	Average Weekly Earning			Average Weekly Hours			Average Hourly Earning		
	March 2024	February 2025	March 2025	March 2024	February 2025	March 2025	March 2024	February 2025	March 2025
Manufacturing	\$972.25	\$1015.98	\$1001.63	39.7	41.3	41.0	\$24.49	\$24.60	\$24.43
Durable Goods	1059.58	1081.28	1064.30	40.8	41.7	41.3	25.97	25.93	25.77
Non-Durable Goods	820.26	889.20	886.14	37.8	40.4	40.5	21.70	22.01	21.88

HOURS AND EARNINGS OF PRODUCTION WORKERS - ALL MANUFACTURING

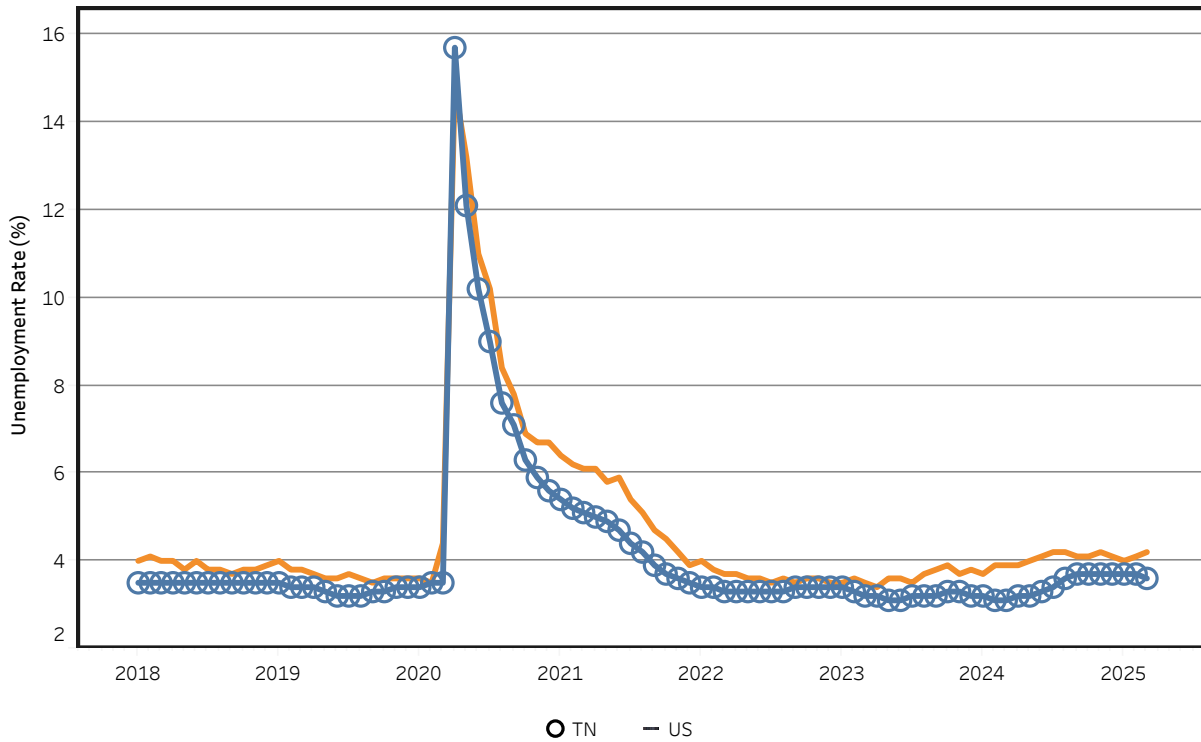
(ranked February 2025 preliminary average weekly earnings; March 2025 will be available later this month)

	Average Weekly Earning			Average Weekly Hours			Average Hourly Earning		
	February 2024	February 2025	Percent Change	February 2024	February 2025	Percent Change	February 2024	February 2025	Percent Change
FLORIDA	\$1212.40	\$1264.09	4.3%	42.60	41.50	-2.6%	\$28.46	\$30.46	7.0%
KENTUCKY	\$1034.98	\$1136.45	9.8%	41.30	42.50	2.9%	\$25.06	\$26.74	6.7%
VIRGINIA	\$990.95	\$1096.24	10.6%	38.80	38.60	-0.5%	\$25.54	\$28.40	11.2%
ALABAMA	\$999.74	\$1092.75	9.3%	41.50	41.90	1.0%	\$24.09	\$26.08	8.3%
SOUTH CAROLINA	\$922.69	\$1066.07	15.5%	36.60	38.50	5.2%	\$25.21	\$27.69	9.8%
GEORGIA	\$1009.19	\$997.15	-1.2%	42.60	40.80	-4.2%	\$23.69	\$24.44	3.2%
TENNESSEE	\$991.60	\$997.04	0.5%	40.00	41.20	3.0%	\$24.79	\$24.20	-2.4%
MISSISSIPPI	\$881.59	\$937.26	6.3%	40.20	41.00	2.0%	\$21.93	\$22.86	4.2%
NORTH CAROLINA	\$898.91	\$916.07	1.9%	39.10	38.80	-0.8%	\$22.99	\$23.61	2.7%
ARKANSAS	\$861.51	\$807.47	-6.3%	39.00	35.40	-9.2%	\$22.09	\$22.81	3.3%

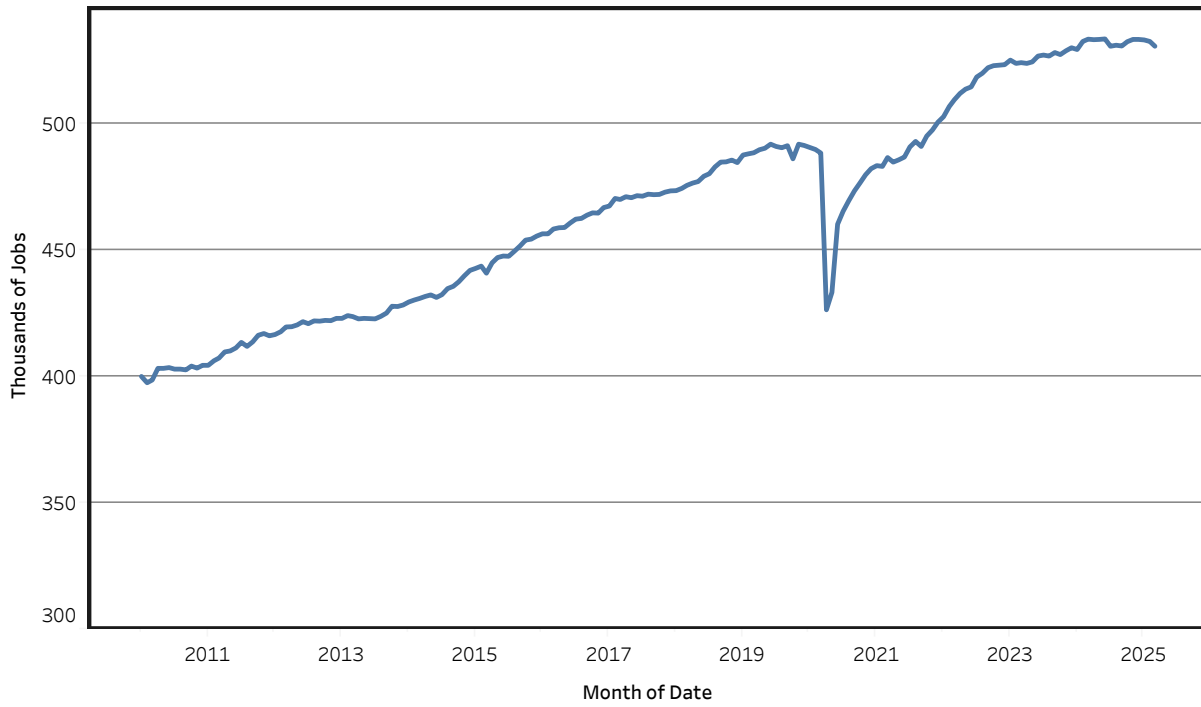
Unemployment Rates - Tennessee Seasonally Adjusted - 2023 to 2025



Unemployment Rates - US & Tennessee Seasonally Adjusted - January 2018 to March 2025



Goods - Producing Jobs in Tennessee Seasonally Adjusted - Jan 2010 to Mar 2025



Service - Providing Jobs in Tennessee Seasonally Adjusted - Jan 2010 to Mar 2025

