

# **TENNESSEE ECONOMIC ANALYSIS**

**December 2025**

**NOT TO BE RELEASED BEFORE:**

**Thursday, January 22, 2026 @ 1:30 PM CT**

**Prepared by:**

**Tennessee Department of Labor and Workforce Development**

**Workforce Insights, Research and Reporting Engine Division**

## **Table of Contents**

### **Economic Indicators**

	<b><u>Page</u></b>
Briefing Packet Summary	1
Labor Force Estimates Summary - Household Survey	2
Business Survey - Not Seasonally Adjusted	3
Seasonally Adjusted Nonfarm Employment	4
Major Changes in Seasonally Adjusted Nonfarm Employment	4

### **Appendix**

	<b><u>Page</u></b>
Hours and Earnings of Production Workers	4
Unemployment Rates, 2014-2025	5

### **Graphs**

	<b><u>Page</u></b>
Tennessee Unemployment Rates	6
Unemployment Rates - U.S. and Tennessee	6
Goods-Producing Jobs in Tennessee	7
Service-Providing Jobs in Tennessee	7

**Briefing Packet Summary  
December 2025**

**Unemployment Rates**

	December 2024	November 2025	December 2025	Change From	
				Year Ago	Month Ago
<b>Tennessee</b>					
Not Seasonally Adjusted	3.5%	3.6%	3.4%	-0.1%	-0.2%
Seasonally Adjusted	3.7%	3.6%	3.6%	-0.1%	0.0%
<b>United States</b>					
Not Seasonally Adjusted	3.8%	4.3%	4.1%	0.3%	-0.2%
Seasonally Adjusted	4.1%	4.5%	4.4%	0.3%	-0.1%

**Hours and Earnings of Production Workers (Manufacturing)**

<b>Tennessee</b>	November 2025	December 2025	Change
Average Weekly Earnings	\$1,025.82	\$1,060.92	\$35.10
Average Weekly Hours	41.7	42.9	1.2
Average Hourly Earnings	\$24.60	\$24.73	\$0.13

<b>United States</b>	November 2025	December 2025	Change
Average Weekly Earnings	\$1,228.86	\$1,231.36	\$2.50
Average Weekly Hours	41.6	41.6	0
Average Hourly Earnings	\$29.54	\$29.60	\$0.06

**SUMMARY:**

Tennessee's seasonally adjusted unemployment rate remained steady at 3.6% in December.

Over the past year, Tennessee's seasonally adjusted unemployment rate has decreased from 3.7% in December 2024.

Over the month, nonfarm employment decreased 5,100 jobs. The largest decreases were in trade, transportation, and utilities, accommodation and food services, and manufacturing.

Over the year, nonfarm employment increased 23,000 jobs. The largest increases were in professional and business services, other services, and state government.

**LABOR FORCE ESTIMATES SUMMARY  
HOUSEHOLD SURVEY**

<b>Tennessee</b> Not Seasonally Adjusted	December 2024	November 2025	<b>December 2025</b>	Change from December 2024 to December 2025		Change from November 2025 to December 2025	
Civilian Labor Force	3,435,489	3,523,175	<b>3,527,850</b>	92,361	2.7%	4,675	0.1%
Labor Force Participation Rate	59.5%	60.4%	<b>60.4%</b>	0.9	percentage points	0.0	percentage points
Employment	3,313,718	3,394,941	<b>3,409,536</b>	95,818	2.9%	14,595	0.4%
Unemployment	121,771	128,234	<b>118,314</b>	-3,457	-2.8%	-9,920	-7.7%
Unemployment Rate	3.5%	3.6%	<b>3.4%</b>	-0.1	percentage points	-0.2	percentage points

Seasonally Adjusted

Civilian Labor Force	3,436,660	3,518,253	<b>3,527,884</b>	91,224	2.7%	9,631	0.3%
Labor Force Participation Rate	59.5%	60.3%	<b>60.4%</b>	0.9	percentage points	0.1	percentage points
Employment	3,308,533	3,392,574	<b>3,402,179</b>	93,646	2.8%	9,605	0.3%
Unemployment	128,127	125,679	<b>125,705</b>	-2,422	-1.9%	26	0.0%
Unemployment Rate	3.7%	3.6%	<b>3.6%</b>	-0.1	percentage points	0.0	percentage points

<b>United States</b> Not Seasonally Adjusted	December 2024	November 2025	<b>December 2025</b>	Change from December 2024 to December 2025		Change from November 2025 to December 2025	
Civilian Labor Force	167,746,000	171,467,000	<b>170,723,000</b>	2,977,000	1.8%	-744,000	-0.4%
Labor Force Participation Rate	62.2%	62.4%	<b>62.1%</b>	-0.1	percentage points	-0.3	percentage points
Employment	161,294,000	164,066,000	<b>163,720,000</b>	2,426,000	1.5%	-346,000	-0.2%
Unemployment	6,452,000	7,401,000	<b>7,003,000</b>	551,000	8.5%	-398,000	-5.4%
Unemployment Rate	3.8%	4.3%	<b>4.1%</b>	0.3	percentage points	-0.2	percentage points

Seasonally Adjusted

Civilian Labor Force	168,547,000	171,541,000	<b>171,495,000</b>	2,948,000	1.7%	-46,000	0.0%
Labor Force Participation Rate	62.5%	62.5%	<b>62.4%</b>	-0.1	percentage points	-0.1	percentage points
Employment	161,661,000	163,760,000	<b>163,992,000</b>	2,331,000	1.4%	232,000	0.1%
Unemployment	6,886,000	7,781,000	<b>7,503,000</b>	617,000	9.0%	-278,000	-3.6%
Unemployment Rate	4.1%	4.5%	<b>4.4%</b>	0.3	percentage points	-0.1	percentage points

**BUSINESS SURVEY - Not Seasonally Adjusted**

Estimated Nonfarm Employment by Industry\*

(numbers in thousands)

	December 2024	November 2025	December 2025	Annual Change		Monthly Change	
				Net Change	% Change	Net Change	% Change
				<b>Total Nonfarm</b>	<b>3,415.0</b>	<b>3,441.7</b>	<b>3,439.6</b>
<b>Total Private</b>	<b>2,946.6</b>	<b>2,965.7</b>	<b>2,965.2</b>	<b>18.6</b>	<b>0.6%</b>	<b>-0.5</b>	<b>0.0%</b>
<b>Goods Producing</b>	<b>535.0</b>	<b>531.5</b>	<b>528.7</b>	<b>-6.3</b>	<b>-1.2%</b>	<b>-2.8</b>	<b>-0.5%</b>
<b>Mining, Logging and Construction</b>	<b>169.5</b>	<b>169.5</b>	<b>167.2</b>	<b>-2.3</b>	<b>-1.4%</b>	<b>-2.3</b>	<b>-1.4%</b>
<b>Manufacturing</b>	<b>365.5</b>	<b>362.0</b>	<b>361.5</b>	<b>-4.0</b>	<b>-1.1%</b>	<b>-0.5</b>	<b>-0.1%</b>
<b>Durable Goods</b>	<b>236.8</b>	<b>238.0</b>	<b>237.6</b>	<b>0.8</b>	<b>0.3%</b>	<b>-0.4</b>	<b>-0.2%</b>
Wood Product Manufacturing	13.3	13.3	13.2	-0.1	-0.8%	-0.1	-0.8%
Nonmetallic Mineral Product Manufacturing	15.4	15.5	15.4	0.0	0.0%	-0.1	-0.6%
Primary Metal Manufacturing	11.2	11.3	11.3	0.1	0.9%	0.0	0.0%
Fabricated Metal Product Manufacturing	42.8	43.5	43.4	0.6	1.4%	-0.1	-0.2%
Machinery Manufacturing	25.1	25.4	25.3	0.2	0.8%	-0.1	-0.4%
Computer and Electronic Product Manufacturing	7.8	8.0	8.0	0.2	2.6%	0.0	0.0%
Electrical Equipment, Appliance, and Component Manufacturing	22.2	22.5	22.5	0.3	1.4%	0.0	0.0%
Transportation Equipment Manufacturing	74.7	74.2	74.2	-0.5	-0.7%	0.0	0.0%
Furniture and Related Product Manufacturing	9.1	9.1	9.1	0.0	0.0%	0.0	0.0%
Miscellaneous Manufacturing	15.2	15.2	15.2	0.0	0.0%	0.0	0.0%
<b>Non-Durable Goods</b>	<b>128.7</b>	<b>124.0</b>	<b>123.9</b>	<b>-4.8</b>	<b>-3.7%</b>	<b>-0.1</b>	<b>-0.1%</b>
Food Manufacturing	41.0	40.0	39.7	-1.3	-3.2%	-0.3	-0.7%
Beverage and Tobacco Product Manufacturing	6.9	6.7	6.6	-0.3	-4.3%	-0.1	-1.5%
Paper Manufacturing	12.4	12.1	12.1	-0.3	-2.4%	0.0	0.0%
Printing and Related Support Activities	7.7	7.5	7.5	-0.2	-2.6%	0.0	0.0%
Chemical Manufacturing	27.0	26.1	26.2	-0.8	-3.0%	0.1	0.4%
Plastics and Rubber Products Manufacturing	24.0	22.3	22.1	-1.9	-7.9%	-0.2	-0.9%
<b>Service-Providing</b>	<b>2,880.0</b>	<b>2,910.2</b>	<b>2,910.9</b>	<b>30.9</b>	<b>1.1%</b>	<b>0.7</b>	<b>0.0%</b>
<b>Private Service Providing</b>	<b>2,411.6</b>	<b>2,434.2</b>	<b>2,436.5</b>	<b>24.9</b>	<b>1.0%</b>	<b>2.3</b>	<b>0.1%</b>
<b>Trade, Transportation, and Utilities</b>	<b>712.2</b>	<b>709.2</b>	<b>714.8</b>	<b>2.6</b>	<b>0.4%</b>	<b>5.6</b>	<b>0.8%</b>
Wholesale Trade	138.2	138.8	139.3	1.1	0.8%	0.5	0.4%
Merchant Wholesalers, Durable Goods	81.4	82.6	83.0	1.6	2.0%	0.4	0.5%
Merchant Wholesalers, Nondurable Goods	49.8	49.4	49.5	-0.3	-0.6%	0.1	0.2%
Wholesale Trade Agents and Brokers	7.0	6.8	6.8	-0.2	-2.9%	0.0	0.0%
Retail Trade	353.7	354.9	357.9	4.2	1.2%	3.0	0.8%
Motor Vehicle and Parts Dealers	47.3	50.2	50.4	3.1	6.6%	0.2	0.4%
Building Material and Garden Equipment and Supplies Dealers	34.0	33.1	33.5	-0.5	-1.5%	0.4	1.2%
Food and Beverage Retailers	61.7	62.1	62.1	0.4	0.6%	0.0	0.0%
Furniture, Home Furnishings, Electronics, and Appliance Retailers	18.9	18.7	19.0	0.1	0.5%	0.3	1.6%
General Merchandise Retailers	82.3	83.0	84.2	1.9	2.3%	1.2	1.4%
Health and Personal Care Retailers	24.1	23.3	23.6	-0.5	-2.1%	0.3	1.3%
Gasoline Stations and Fuel Dealers	26.4	26.6	26.7	0.3	1.1%	0.1	0.4%
Clothing, Clothing Accessories, Shoe, and Jewelry Retailers	24.7	24.2	24.8	0.1	0.4%	0.6	2.5%
Sporting Goods, Hobby, Musical Instrument, Book, & Misc Retailers	34.3	33.7	33.6	-0.7	-2.0%	-0.1	-0.3%
Transportation, Warehousing, and Utilities	220.3	215.5	217.6	-2.7	-1.2%	2.1	1.0%
Utilities	4.5	4.5	4.5	0.0	0.0%	0.0	0.0%
Transportation and Warehousing	215.8	211.0	213.1	-2.7	-1.3%	2.1	1.0%
<b>Information</b>	<b>55.2</b>	<b>54.0</b>	<b>54.8</b>	<b>-0.4</b>	<b>-0.7%</b>	<b>0.8</b>	<b>1.5%</b>
<b>Financial Activities</b>	<b>193.8</b>	<b>191.8</b>	<b>192.0</b>	<b>-1.8</b>	<b>-0.9%</b>	<b>0.2</b>	<b>0.1%</b>
Finance and Insurance	149.3	148.2	148.2	-1.1	-0.7%	0.0	0.0%
Real Estate and Rental and Leasing	44.5	43.6	43.8	0.9	2.0%	0.2	0.5%
<b>Professional and Business Services</b>	<b>451.3</b>	<b>461.7</b>	<b>459.4</b>	<b>1.9</b>	<b>0.4%</b>	<b>-2.3</b>	<b>-0.5%</b>
Professional, Scientific, and Technical Services	180.2	185.5	186.6	2.9	1.6%	1.1	0.6%
Management of Companies and Enterprises	58.3	57.8	57.6	3.9	6.7%	-0.2	-0.3%
Administrative and Support and Waste Services	212.8	218.4	215.2	2.4	1.1%	-3.2	-1.5%
<b>Private Education and Health Services</b>	<b>500.4</b>	<b>505.0</b>	<b>506.1</b>	<b>3.4</b>	<b>0.7%</b>	<b>1.1</b>	<b>0.2%</b>
Private Educational Services	70.1	73.4	71.7	4.4	6.3%	-1.7	-2.3%
Health Care and Social Assistance	430.3	431.6	434.4	5.4	1.3%	2.8	0.6%
Ambulatory Health Care Services	178.6	175.7	176.4	6.4	3.6%	0.7	0.4%
Hospitals	127.1	129.7	130.6	7.4	5.8%	0.9	0.7%
Nursing and Residential Care Facilities	64.0	66.5	66.9	8.4	13.1%	0.4	0.6%
Social Assistance	60.6	59.7	60.5	-0.1	-0.2%	0.8	1.3%
<b>Leisure and Hospitality</b>	<b>366.0</b>	<b>374.4</b>	<b>370.4</b>	<b>4.4</b>	<b>1.2%</b>	<b>-4.0</b>	<b>-1.1%</b>
Arts, Entertainment, and Recreation	47.9	50.5	49.5	1.6	3.3%	-1.0	-2.0%
Accommodation and Food Services	318.1	323.9	320.9	2.8	0.9%	-3.0	-0.9%
Accommodation	35.9	36.6	35.8	-0.1	-0.3%	-0.8	-2.2%
Food Services and Drinking Places	282.2	287.3	285.1	2.9	1.0%	-2.2	-0.8%
<b>Other Services</b>	<b>132.7</b>	<b>138.1</b>	<b>139.0</b>	<b>6.3</b>	<b>4.7%</b>	<b>0.9</b>	<b>0.7%</b>
<b>Government</b>	<b>468.4</b>	<b>476.0</b>	<b>474.4</b>	<b>6.0</b>	<b>1.3%</b>	<b>-1.6</b>	<b>-0.3%</b>
Federal Government	59.4	55.9	56.0	-3.4	-5.7%	0.1	0.2%
State Government	104.8	113.2	111.4	6.6	6.3%	-1.8	-1.6%
State Government Educational Services	62.0	69.4	67.4	5.4	8.7%	-2.0	-2.9%
State Government Excluding Education	42.8	43.8	44.0	1.2	2.8%	0.2	0.5%
Local Government	304.2	306.9	307.0	2.8	0.9%	0.1	0.0%
Local Government Education Services	154.3	155.2	155.8	1.5	1.0%	0.6	0.4%
Local Government excluding Educational Services	86.2	88.5	89.1	2.9	3.4%	0.6	0.7%

\* Estimates include all full- and part-time nonagricultural wage and salary employees who worked during, or received pay for, any part of the pay period which include the 12th of the month. This is a count of jobs by place of work. Agricultural workers, proprietors, self-employed persons, workers in private households, and unpaid family workers are excluded.

**Seasonally Adjusted Nonfarm Employment**

(numbers in thousands)

	December 2024	November 2025	December 2025	Annual Change		Monthly Change	
				Net Change	% Change	Net Change	% Change
				<b>Total Nonfarm</b>	<b>3,385.9</b>	<b>3,414.0</b>	<b>3,408.9</b>
Mining, Logging and Construction	169.4	168.2	<b>167.0</b>	-2.4	-1.4%	-1.2	-0.7%
Mining and logging	4.5	4.6	<b>4.6</b>	0.1	2.2%	0.0	0.0%
Construction	164.9	163.6	<b>162.4</b>	-2.5	-1.5%	-1.2	-0.7%
Manufacturing	364.3	362.3	<b>360.6</b>	-3.7	-1.0%	-1.7	-0.5%
Durable Goods	236.0	238.4	<b>237.0</b>	1.0	0.4%	-1.4	-0.6%
Non-Durable Goods	128.3	123.9	<b>123.6</b>	-4.7	-3.7%	-0.3	-0.2%
Trade, Transportation, and Utilities	694.3	701.1	<b>698.0</b>	3.7	0.5%	-3.1	-0.4%
Wholesale Trade	137.6	138.7	<b>138.7</b>	1.1	0.8%	0.0	0.0%
Retail Trade	344.8	351.2	<b>350.0</b>	5.2	1.5%	-1.2	-0.3%
Transportation, Warehousing, and Utilities	211.9	211.2	<b>209.3</b>	-2.6	-1.2%	-1.9	-0.9%
Information	54.6	53.8	<b>54.1</b>	-0.5	-0.9%	0.3	0.6%
Financial Activities	193.6	191.0	<b>191.5</b>	-2.1	-1.1%	0.5	0.3%
Finance and Insurance	149.1	147.4	<b>147.8</b>	-1.3	-0.9%	0.4	0.3%
Real Estate and Rental and Leasing	44.5	43.6	<b>43.7</b>	-0.8	-1.8%	0.1	0.2%
Professional and Business Services	447.9	457.7	<b>457.1</b>	9.2	2.1%	-0.6	-0.1%
Professional, Scientific, and Technical Services	179.5	185.6	<b>186.3</b>	6.8	3.8%	0.7	0.4%
Management of Companies and Enterprises	58.1	57.5	<b>57.5</b>	-0.6	-1.0%	0.0	0.0%
Administrative, Support and Waste Services	210.3	214.6	<b>213.3</b>	3.0	1.4%	-1.3	-0.6%
Private Education and Health Services	497.7	500.6	<b>501.7</b>	4.0	0.8%	1.1	0.2%
Private Educational Services	68.2	70.3	<b>70.1</b>	1.9	2.8%	-0.2	-0.3%
Health Care and Social Assistance	429.5	430.3	<b>431.6</b>	2.1	0.5%	1.3	0.3%
Leisure and Hospitality	370.3	376.5	<b>374.8</b>	4.5	1.2%	-1.7	-0.5%
Arts, Entertainment, and Recreation	51.3	52.4	<b>52.8</b>	1.5	2.9%	0.4	0.8%
Accommodation and Food Services	319.0	324.1	<b>322.0</b>	3.0	0.9%	-2.1	-0.6%
Other Services	133.4	138.7	<b>139.4</b>	6.0	4.5%	0.7	0.5%
Government	460.4	464.1	<b>464.7</b>	4.3	0.9%	0.6	0.1%
Federal Government	58.9	56.0	<b>55.7</b>	-3.2	-5.4%	-0.3	-0.5%
State Government	102.4	107.6	<b>108.4</b>	6.0	5.9%	0.8	0.7%
Local Government	299.1	300.5	<b>300.6</b>	1.5	0.5%	0.1	0.0%

**Major Changes in Seasonally Adjusted Nonfarm Employment (in thousands)**

Monthly Change from November 2025 to December 2025

Major Employment Increases	November	December	Change
Health Care and Social Assistance	430.3	431.6	1.3
State Government	107.6	108.4	0.8
Professional, Scientific, and Technical Services	185.6	186.3	0.7
<b>Major Employment Decreases</b>	<b>November</b>	<b>December</b>	<b>Change</b>
Trade, Transportation, and Utilities	701.1	698.0	-3.1
Accommodation and Food Services	324.1	322.0	-2.1
Manufacturing	362.3	360.6	-1.7

Yearly Change from December to December

Major Employment Increases	December	December	Change
Professional and Business Services	447.9	457.1	9.2
Other Services	133.4	139.4	6.0
State Government	102.4	108.4	6.0
<b>Major Employment Decreases</b>	<b>December</b>	<b>December</b>	<b>Change</b>
Non-Durable Goods Manufacturing	128.3	123.6	-4.7
Federal Government	58.9	55.7	-3.2
Transportation, Warehousing, and Utilities	211.9	209.3	-2.6

**Hours and Earnings of Production Workers (Manufacturing)**

Tennessee	Average Weekly Earnings			Average Weekly Hours			Average Hourly Earnings		
	Dec. 2024	Nov. 2025	Dec. 2025	Dec. 2024	Nov. 2025	Dec. 2025	Dec. 2024	Nov. 2025	Dec. 2025
Manufacturing	\$1,017.06	\$1,025.82	\$1,060.92	41.7	41.7	42.9	\$24.39	\$24.60	\$24.73
Durable Goods	\$1,083.65	\$1,049.19	\$1,099.96	42.1	41.0	42.8	\$25.74	\$25.59	\$25.70
Non-durable Goods	\$892.44	\$981.50	\$987.98	40.9	43.2	43.2	\$21.82	\$22.72	\$22.87

**HOURS AND EARNINGS OF PRODUCTION WORKERS - ALL MANUFACTURING**

(November 2025 average hours and earnings; December 2025 will be available later this month)

	Average Weekly Earnings			Average Weekly Hours			Average Hourly Earnings		
	Nov. 2024	Nov. 2025	Pct. Change	Nov. 2024	Nov. 2025	Pct. Change	Nov. 2024	Nov. 2025	Pct. Change
Alabama	\$1,050.93	\$1,165.84	10.9%	41.1	44.6	8.5%	\$25.57	\$26.14	2.2%
Arkansas	\$843.12	\$941.66	11.7%	36.0	39.4	9.4%	\$23.42	\$23.90	2.0%
Florida	\$1,242.54	\$1,263.26	1.7%	40.5	41.5	2.5%	\$30.68	\$30.44	-0.8%
Georgia	\$995.90	\$1,020.86	2.5%	40.5	40.9	1.0%	\$24.59	\$24.96	1.5%
Kentucky	\$1,122.75	\$1,161.59	3.5%	41.8	42.8	2.4%	\$26.86	\$27.14	1.0%
Mississippi	\$921.38	\$953.47	3.5%	40.2	41.6	3.5%	\$22.92	\$22.92	0.0%
North Carolina	\$944.07	\$932.40	-1.2%	39.7	40.0	0.8%	\$23.78	\$23.31	-2.0%
South Carolina	\$1,067.86	\$1,155.07	8.2%	40.1	40.6	1.2%	\$26.63	\$28.45	6.8%
Tennessee	\$1,002.04	\$1,024.99	2.3%	41.0	41.7	1.7%	\$24.44	\$24.58	0.6%
Virginia	\$1,068.80	\$1,130.22	5.7%	39.6	39.0	-1.5%	\$26.99	\$28.98	7.4%

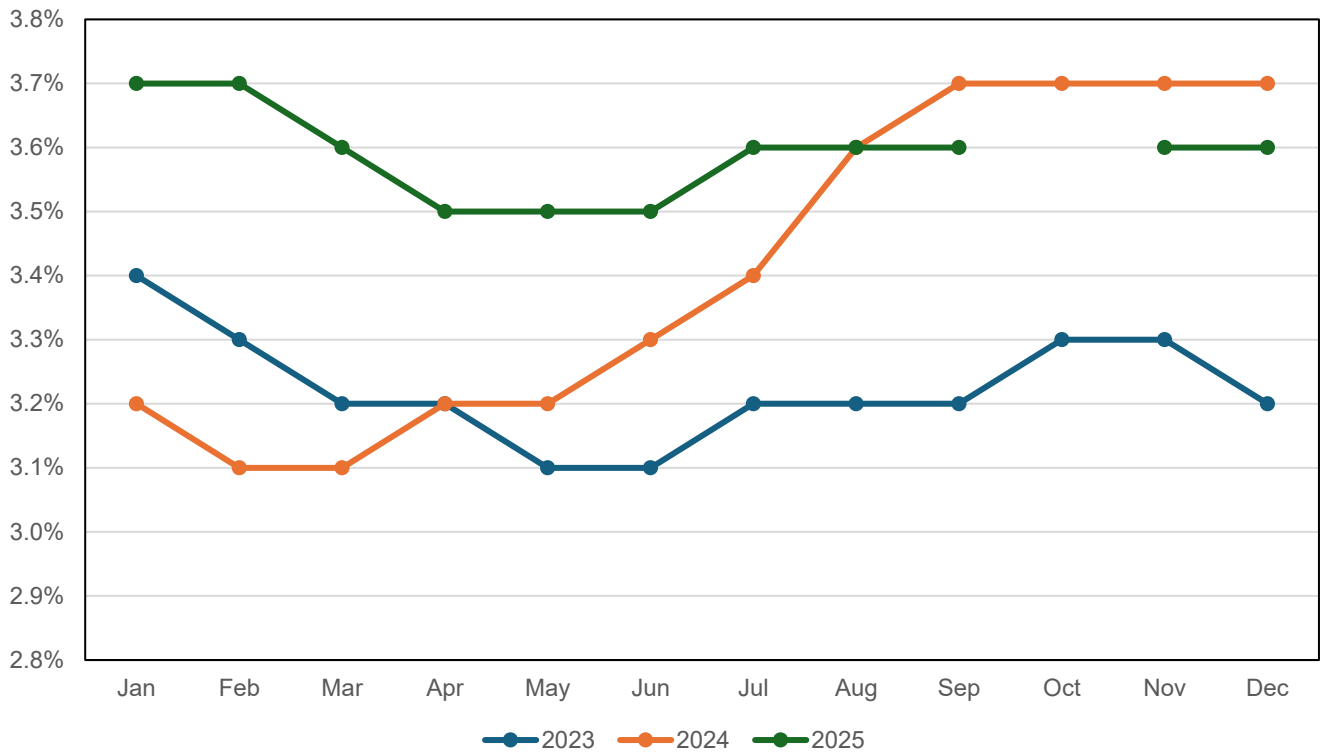
**UNEMPLOYMENT RATES, 2014-2025**  
**U.S. & Tennessee, Seasonally Adjusted & Not Seasonally Adjusted**

	2014				2015				2016				2017			
	U.S.		TN		U.S.		TN		U.S.		TN		U.S.		TN	
	Seas. Adj.	Not Seas. Adj.	Seas. Adj.	Not Seas. Adj.	Seas. Adj.	Not Seas. Adj.	Seas. Adj.	Not Seas. Adj.	Seas. Adj.	Not Seas. Adj.	Seas. Adj.	Not Seas. Adj.	Seas. Adj.	Not Seas. Adj.	Seas. Adj.	Not Seas. Adj.
Jan	6.6	7.0	6.9	7.0	5.7	6.1	6.1	6.5	4.8	5.3	4.8	5.0	4.7	5.1	4.5	5.0
Feb	6.7	7.0	6.8	7.0	5.5	5.8	6.0	6.1	4.9	5.2	4.7	4.8	4.6	4.9	4.3	4.5
Mar	6.7	6.8	6.7	6.8	5.4	5.6	5.9	5.8	5.0	5.1	4.7	4.7	4.4	4.6	4.1	4.1
Apr	6.2	5.9	6.7	6.0	5.4	5.1	5.8	5.3	5.1	4.7	4.7	4.3	4.4	4.1	3.9	3.4
May	6.3	6.1	6.7	6.3	5.6	5.3	5.7	5.6	4.8	4.5	4.7	4.2	4.4	4.1	3.7	3.3
Jun	6.1	6.3	6.6	7.1	5.3	5.5	5.6	6.1	4.9	5.1	4.7	5.2	4.3	4.5	3.6	4.1
Jul	6.2	6.5	6.6	7.2	5.2	5.6	5.5	5.9	4.8	5.1	4.7	5.1	4.3	4.6	3.5	3.9
Aug	6.1	6.3	6.5	6.7	5.1	5.2	5.4	5.4	4.9	5.0	4.8	4.9	4.4	4.5	3.4	3.6
Sep	5.9	5.7	6.5	6.4	5.0	4.9	5.3	5.2	5.0	4.8	4.8	4.9	4.3	4.1	3.4	3.3
Oct	5.7	5.5	6.4	6.1	5.0	4.8	5.1	5.1	4.9	4.7	4.8	4.7	4.2	3.9	3.4	3.3
Nov	5.8	5.5	6.3	6.1	5.1	4.8	5.0	4.9	4.7	4.4	4.8	4.4	4.2	3.9	3.5	3.3
Dec	5.6	5.4	6.2	5.9	5.0	4.8	4.9	4.7	4.7	4.5	4.7	4.5	4.1	3.9	3.5	3.2
Avg		6.2		6.5		5.3		5.5		4.9		4.7		4.4		3.7

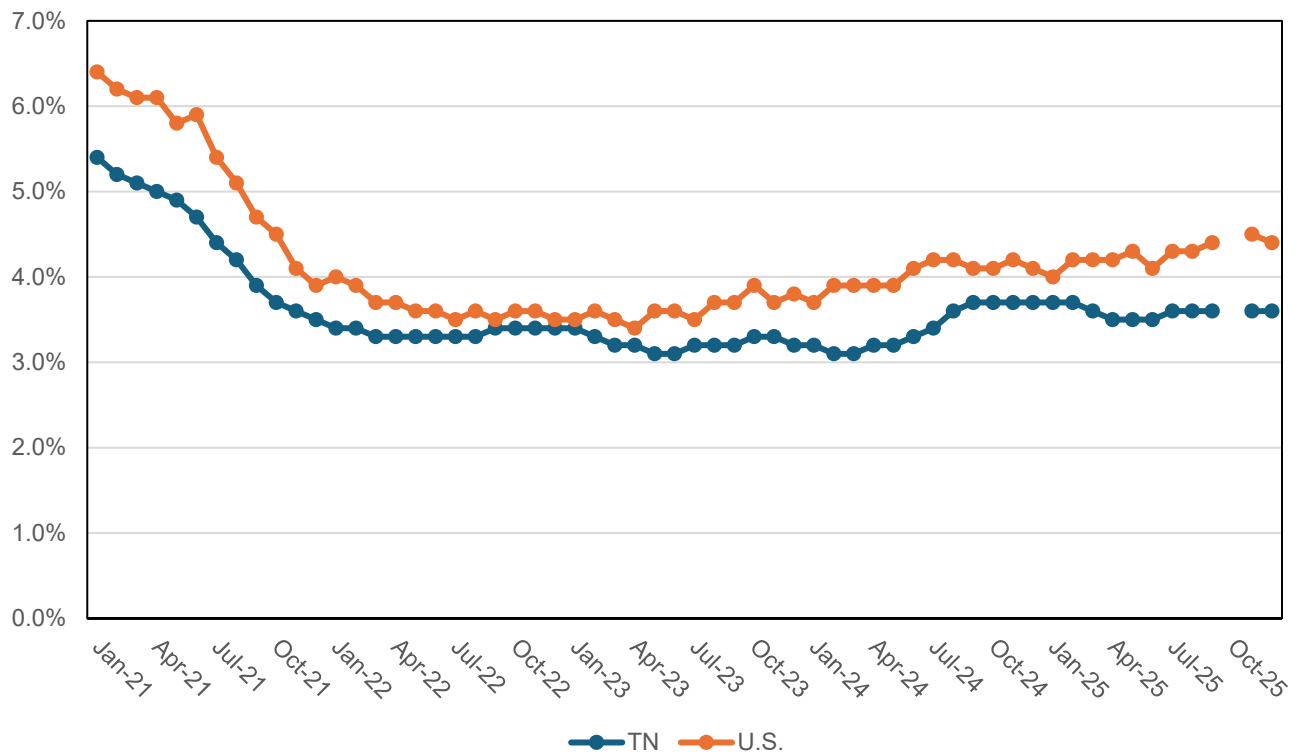
	2018				2019				2020				2021			
	U.S.		TN		U.S.		TN		U.S.		TN		U.S.		TN	
	Seas. Adj.	Not Seas. Adj.	Seas. Adj.	Not Seas. Adj.	Seas. Adj.	Not Seas. Adj.	Seas. Adj.	Not Seas. Adj.	Seas. Adj.	Not Seas. Adj.	Seas. Adj.	Not Seas. Adj.	Seas. Adj.	Not Seas. Adj.	Seas. Adj.	Not Seas. Adj.
Jan	4.0	4.5	3.5	3.9	4.0	4.4	3.5	3.9	3.6	4.0	3.4	3.7	6.4	6.8	5.4	5.7
Feb	4.1	4.4	3.5	3.6	3.8	4.1	3.4	3.4	3.5	3.8	3.5	3.4	6.2	6.6	5.2	5.3
Mar	4.0	4.1	3.5	3.5	3.8	3.9	3.4	3.4	4.4	4.5	3.5	3.9	6.1	6.2	5.1	5.1
Apr	4.0	3.7	3.5	3.0	3.7	3.3	3.4	2.9	14.8	14.4	15.7	15.0	6.1	5.7	5.0	4.7
May	3.8	3.6	3.5	3.1	3.6	3.4	3.3	3.1	13.2	13.0	12.1	11.8	5.8	5.5	4.9	4.6
Jun	4.0	4.2	3.5	4.1	3.6	3.8	3.2	3.8	11.0	11.2	10.2	10.8	5.9	6.1	4.7	5.6
Jul	3.8	4.1	3.5	3.9	3.7	4.0	3.2	3.7	10.2	10.5	9.0	10.1	5.4	5.7	4.4	4.9
Aug	3.8	3.9	3.5	3.6	3.6	3.8	3.2	3.3	8.4	8.5	7.6	7.7	5.1	5.3	4.2	4.4
Sep	3.7	3.6	3.5	3.4	3.5	3.3	3.3	3.1	7.8	7.7	7.1	6.9	4.7	4.6	3.9	3.8
Oct	3.8	3.5	3.5	3.4	3.6	3.3	3.3	3.3	6.9	6.6	6.3	5.9	4.5	4.3	3.7	3.5
Nov	3.8	3.5	3.5	3.1	3.6	3.3	3.4	3.1	6.7	6.4	5.9	5.4	4.1	3.9	3.6	3.2
Dec	3.9	3.7	3.5	3.2	3.6	3.4	3.4	3.1	6.7	6.5	5.6	5.4	3.9	3.7	3.5	3.0
Avg		3.9		3.5		3.7		3.3		8.1		7.4		5.3		4.5

	2022				2023				2024				2025			
	U.S.		TN		U.S.		TN		U.S.		TN		U.S.		TN	
	Seas. Adj.	Not Seas. Adj.	Seas. Adj.	Not Seas. Adj.	Seas. Adj.	Not Seas. Adj.	Seas. Adj.	Not Seas. Adj.	Seas. Adj.	Not Seas. Adj.	Seas. Adj.	Not Seas. Adj.	Seas. Adj.	Not Seas. Adj.	Seas. Adj.	Not Seas. Adj.
Jan	4.0	4.4	3.4	3.7	3.5	3.9	3.4	3.6	3.7	4.1	3.2	3.3	4.0	4.4	3.7	3.8
Feb	3.9	4.1	3.4	3.4	3.6	3.9	3.3	3.4	3.9	4.2	3.1	3.1	4.2	4.5	3.7	3.5
Mar	3.7	3.8	3.3	3.2	3.5	3.6	3.2	3.2	3.9	3.9	3.1	3.1	4.2	4.2	3.6	3.3
Apr	3.7	3.3	3.3	3.0	3.4	3.1	3.2	2.7	3.9	3.5	3.2	2.8	4.2	3.9	3.5	2.9
May	3.6	3.4	3.3	3.1	3.6	3.4	3.1	3.1	3.9	3.7	3.2	2.9	4.3	4.0	3.5	3.3
Jun	3.6	3.8	3.3	4.0	3.6	3.8	3.1	3.7	4.1	4.3	3.3	3.9	4.1	4.4	3.5	4.0
Jul	3.5	3.8	3.3	3.7	3.5	3.8	3.2	3.5	4.2	4.5	3.4	3.9	4.3	4.6	3.6	4.4
Aug	3.6	3.8	3.3	3.5	3.7	3.9	3.2	3.3	4.2	4.4	3.6	3.7	4.3	4.5	3.6	3.6
Sep	3.5	3.3	3.4	3.2	3.7	3.6	3.2	3.3	4.1	3.9	3.7	3.5	4.4	4.3	3.6	3.5
Oct	3.6	3.4	3.4	3.4	3.9	3.6	3.3	3.3	4.1	3.9	3.7	3.6	-	-	-	-
Nov	3.6	3.4	3.4	3.2	3.7	3.5	3.3	3.0	4.2	4.0	3.7	3.7	4.5	4.3	3.6	3.6
Dec	3.5	3.3	3.4	3.0	3.8	3.5	3.2	2.9	4.1	3.8	3.7	3.5	4.4	4.1	3.6	3.4
Avg		3.6		3.4		3.6		3.2		4.0		3.4				

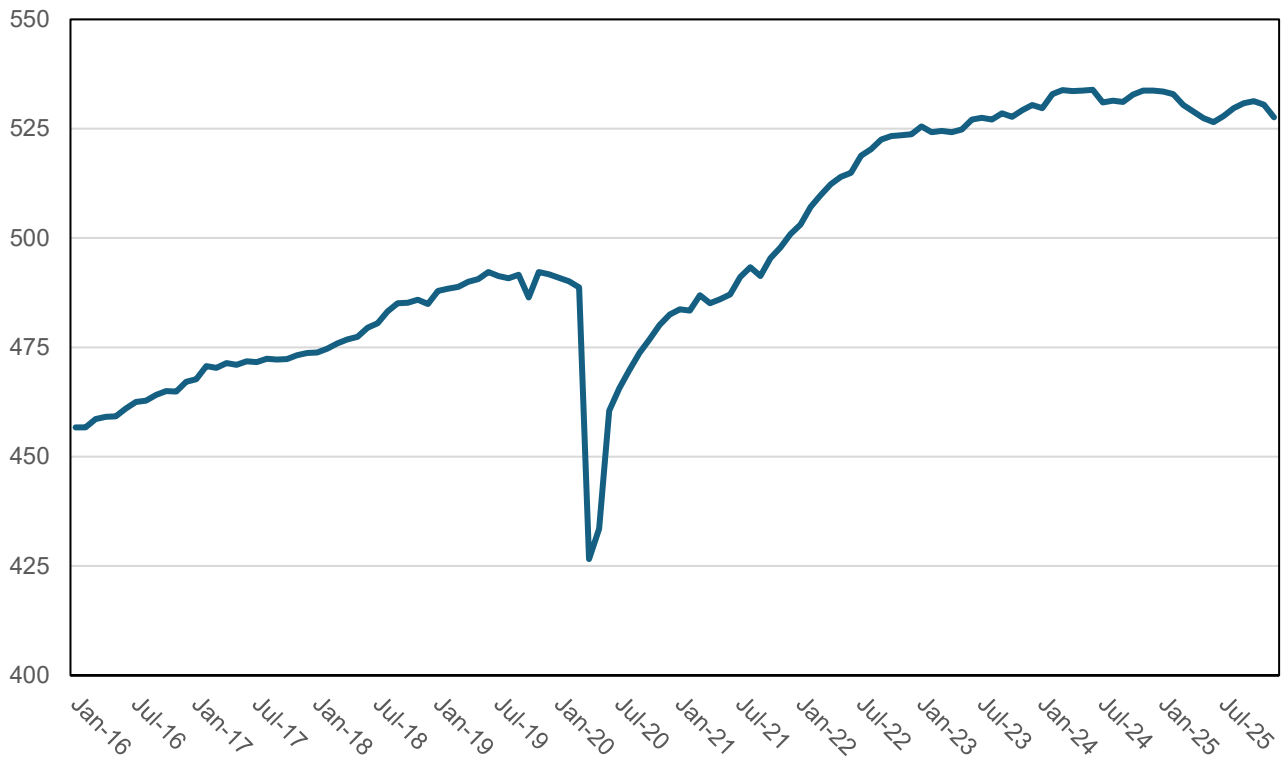
### Tennessee Unemployment Rates 2023-2025



### Tennessee & U.S. Unemployment Rates 2021-2025



### Goods-Producing Jobs in Tennessee (in thousands)



### Service-Providing Jobs in Tennessee (in thousands)

