



# Tennessee Labor Market Report

Bill Lee  
Governor

Deniece Thomas  
Commissioner

October  
2024

## Highlights

**Pages 1-2:** Information about Veterans in the United States

**Page 3:** Tennessee annual average labor force statistics, and October county unemployment rates

**Pages 4-5:** Monthly Tennessee nonfarm employment, and MSA and city labor force data

**Pages 6-9:** Monthly nonfarm employment statistics for the four largest MSA's and graphs of the unemployment rates

**Page 10:** Monthly nonfarm employment for each small MSA in Tennessee

**Page 11:** Monthly consumer price index and hours and earnings for all workers by industry and production workers in manufacturing, graphs of Tennessee unemployment and labor force participation rates

## Facts about U.S. Veterans 2023

Each year, the Bureau of Labor Statistics publishes data on veterans across the United States. This data is derived from the Current Population Survey (CPS), which surveys approximately 60,000 households across the country and is used to provide information about the labor force status of the U.S. population. Veteran status is among the information collected from participants each month. Supplemental information is collected in August about items such as National Guard membership and service-connected disability. Selected information from the 2023 Employment Situation of Veterans is presented below.

### Veteran Demographics

Among the almost 17.9 million U.S. veterans, 2.5 million (13.7 percent) were black or African American, 14.5 million (81.2 percent) were white, 1.5 million were Hispanic (8.2 percent), and 309,000 (1.7 percent) were Asian. In 2023, 8.3 million veterans (46.3 percent) were 65 years and older while 1.8 million (9.8 percent) were under 35. Women accounted for 11.4 percent of all veterans. The states where the greatest share of the age 18 and older population were veterans were Alaska (11.7 percent), Montana (11.3 percent), Virginia (11.0 percent), Wyoming (10.5 percent), South Carolina (10.5 percent), and New Mexico (9.4 percent). Texas had the most veterans with over 1.6 million but ranked 37th in terms of percentage of population. Florida had the second most with 1.4 million veterans, but ranked 29th at 7.8 percent of the state's population. Tennessee had 475,000 veterans and ranked 13th at 8.7% of the population.

As of August 2023, 5.3 million U.S. veterans (29.5 percent) had a service-connected disability. Among those with a service-connected disability, 20 percent reported a disability rating less than 30 percent, while 55.7 percent had a rating of 60 percent or greater. A higher rating represents greater severity of disability.

### When Veterans Served

Veterans have served in both war and peacetime. Veterans who served during World War II, the Korean War, and the Vietnam era comprised about 33.3 percent of all veterans (6 million) in 2023. Veterans who served during the Gulf War era I (August 1990 to August 2001) or during the Gulf War era II (September 2001 to the present) made up about 44.7 percent (8 million) of all veterans. About 4 million (22 percent) served outside of the designated wartime periods.

### Veterans in the Labor Force

Nationally, veterans were unemployed at a rate of 2.8 percent in 2023 and participated in the labor force at a rate of 48.2 percent. By contrast, nonveterans participated in the labor force at a rate of 65.1 percent, but were more often unemployed at 3.6 percent. In Tennessee, the labor force participation rate for veterans was 46.7 percent with an unemployment rate of 3.9 percent. This compares to 62.8 percent and 3.2 percent, respectively, for nonveterans in Tennessee. The states with the highest unemployment rates for veterans in 2023 were New Mexico (7.1 percent), Delaware (5.4 percent), Nevada (5.2 percent), and Maine (4.2 percent). Those with the lowest rates were Connecticut (0.4 percent), Oklahoma (1.0 percent), Alabama and North Dakota (both 1.1 percent), and Wyoming (1.2 percent).

Of the nearly 8.4 million employed veterans in the U.S., 22.5 percent worked in the public sector. The next largest share of employment was in manufacturing at 11.7 percent. Among employed women veterans, 29.7 percent worked in the public sector and 21.7 percent worked in private education and health services.

Additional data and information is available [here](#).

## Employment Status of Veterans 18 Years and Over by State, 2023 Annual Averages [Numbers in thousands]

State	Civilian noninstitutional population	Civilian labor force						Not in labor force
		Total	Percent of population	Employed		Unemployed		
				Total	Percent of population	Total	Percent of labor force	
<b>Total, 18 years and over</b>	17,898	8,632	48.2	8,391	46.9	241	2.8	9,267
Alabama	355	174	49.2	172	48.6	2	1.1	180
Alaska	62	36	58.1	35	56.3	1	3.1	26
Arizona	458	222	48.5	216	47.1	6	2.9	236
Arkansas	207	95	45.8	94	45.1	1	1.6	112
California	1,324	601	45.4	584	44.1	17	2.9	723
Colorado	376	193	51.3	189	50.3	4	1.8	183
Connecticut	149	61	40.9	60	40.7	0	0.4	88
Delaware	75	34	44.7	32	42.3	2	5.4	41
District of Columbia	24	11	48.1	11	47.0	0	2.2	12
Florida	1,400	625	44.7	610	43.6	15	2.5	775
Georgia	634	325	51.2	317	50.0	8	2.5	309
Hawaii	87	40	45.7	39	44.8	1	2.0	47
Idaho	124	54	44.0	53	42.6	2	3.3	69
Illinois	499	215	43.2	209	41.9	6	3.0	284
Indiana	403	191	47.3	185	46.0	6	2.9	212
Iowa	204	114	56.0	110	54.0	4	3.6	90
Kansas	164	80	48.7	77	47.1	3	3.3	84
Kentucky	261	125	48.1	124	47.3	2	1.5	136
Louisiana	279	124	44.5	121	43.2	4	3.1	155
Maine	104	47	44.9	45	43.0	2	4.2	57
Maryland	340	190	56.0	186	54.8	4	2.0	150
Massachusetts	243	113	46.4	111	45.7	2	1.7	130
Michigan	515	254	49.3	247	48.0	7	2.7	261
Minnesota	275	121	43.9	116	42.3	5	3.7	154
Mississippi	183	77	42.2	75	41.2	2	2.5	106
Missouri	382	177	46.4	173	45.4	4	2.1	205
Montana	101	51	51.0	50	49.7	1	2.7	49
Nebraska	114	56	48.8	55	48.1	1	1.3	58
Nevada	216	112	51.8	106	49.1	6	5.2	104
New Hampshire	103	48	46.4	46	44.7	2	3.6	55
New Jersey	282	106	37.8	103	36.6	3	3.2	175
New Mexico	153	64	41.5	59	38.6	5	7.1	90
New York	666	280	42.0	270	40.5	10	3.6	386
North Carolina	684	320	46.8	315	46.1	5	1.7	364
North Dakota	47	27	57.4	26	56.8	0	1.1	20
Ohio	684	317	46.3	309	45.2	8	2.4	368
Oklahoma	258	140	54.3	139	53.7	1	1.0	118
Oregon	276	121	43.8	116	42.2	5	3.8	155
Pennsylvania	684	295	43.1	289	42.2	6	2.0	390
Rhode Island	55	25	44.9	24	43.8	1	2.5	30
South Carolina	437	200	45.8	193	44.3	7	3.4	237
South Dakota	59	32	54.5	32	53.2	1	2.5	27
Tennessee	475	222	46.7	213	44.9	9	3.9	253
Texas	1,603	915	57.1	885	55.2	30	3.2	688
Utah	147	81	55.3	80	54.2	2	2.0	66
Vermont	37	17	45.4	16	44.6	0	1.7	20
Virginia	735	447	60.8	431	58.6	16	3.7	288
Washington	473	238	50.4	229	48.5	9	3.8	234
West Virginia	123	55	44.7	54	43.8	1	2.2	68
Wisconsin	312	138	44.4	135	43.3	3	2.4	173
Wyoming	47	24	49.8	23	49.3	0	1.2	24

NOTE: Veterans are men and women who served on active duty in the U.S. Armed Forces and were not on active duty at the time of the survey. Dash indicates no data or data that do not meet publication criteria.

# Tennessee Civilian Labor Workforce 1994-Present

# County Unemployment Rates\*

(NUMBERS IN THOUSANDS)

MONTHLY DATA NOT SEASONALLY ADJUSTED

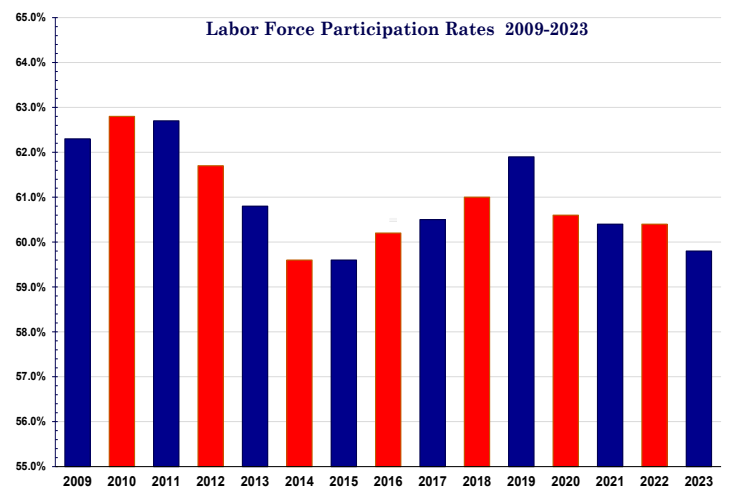
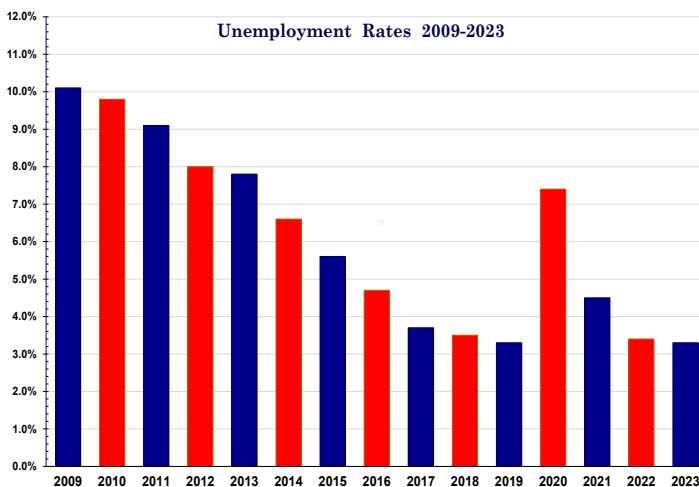
Year and Month	Civilian noninstitutional population	Civilian Labor Force					
		Total	Participation Rate (%)	Employed		Unemployed	
				Total	Rate (%)	Total	Rate (%)
1994	4,003.3	2,657.2	66.4%	2,529.6	63.2%	127.6	4.8%
1995	4,075.6	2,723.1	66.8%	2,582.9	63.4%	140.3	5.2%
1996	4,150.1	2,763.2	66.6%	2,620.2	63.1%	143.0	5.2%
1997	4,218.9	2,780.6	65.9%	2,634.2	62.4%	146.4	5.3%
1998	4,272.7	2,810.1	65.8%	2,688.5	62.9%	121.6	4.3%
1999	4,317.6	2,843.0	65.8%	2,730.1	63.2%	112.9	4.0%
2000	4,358.4	2,849.0	65.4%	2,738.8	62.8%	110.2	3.9%
2001	4,401.2	2,857.7	64.9%	2,728.6	62.0%	129.0	4.5%
2002	4,444.9	2,898.9	65.2%	2,750.4	61.9%	148.5	5.1%
2003	4,492.3	2,904.6	64.7%	2,744.4	61.1%	160.2	5.5%
2004	4,541.6	2,897.8	63.8%	2,742.9	60.4%	154.9	5.3%
2005	4,610.1	2,898.5	62.9%	2,738.2	59.4%	160.3	5.5%
2006	4,692.4	3,014.7	64.2%	2,856.1	60.9%	158.7	5.3%
2007	4,760.1	3,043.3	63.9%	2,901.9	61.0%	141.3	4.6%
2008	4,821.7	3,060.8	63.5%	2,862.1	59.4%	198.7	6.5%
2009	4,868.4	3,032.7	62.3%	2,725.1	56.0%	307.5	10.1%
2010	4,925.4	3,093.1	62.8%	2,789.1	56.6%	304.1	9.8%
2011	4,973.5	3,117.5	62.7%	2,833.3	57.0%	284.2	9.1%
2012	5,020.4	3,096.3	61.7%	2,849.7	56.8%	246.6	8.0%
2013	5,064.6	3,078.9	60.8%	2,840.1	56.1%	238.8	7.8%
2014	5,109.9	3,043.6	59.6%	2,842.5	55.6%	201.0	6.6%
2015	5,159.2	3,074.2	59.6%	2,902.7	56.3%	171.5	5.6%
2016	5,213.9	3,136.4	60.2%	2,987.7	57.3%	148.7	4.7%
2017	5,284.9	3,197.0	60.5%	3,077.5	58.2%	119.5	3.7%
2018	5,342.7	3,257.1	61.0%	3,143.9	58.8%	113.3	3.5%
2019	5,397.4	3,339.4	61.9%	3,227.7	59.8%	111.7	3.3%
2020	5,446.8	3,299.2	60.6%	3,053.6	56.1%	245.6	7.4%
2021	5,496.6	3,321.4	60.4%	3,172.9	57.7%	148.5	4.5%
2022	5,570.0	3,362.0	60.4%	3,248.0	58.3%	114.0	3.4%
2023	5,648.7	3,379.6	59.8%	3,267.9	57.9%	111.7	3.3%
2024							
January	5,692.3	3,376.5	59.3%	3,257.4	57.2%	119.2	3.5%
February	5,698.4	3,394.5	59.6%	3,299.2	57.9%	95.3	2.8%
March	5,704.8	3,428.4	60.1%	3,327.2	58.3%	101.2	3.0%
April	5,711.3	3,413.7	59.8%	3,321.9	58.2%	91.8	2.7%
May	5,717.8	3,403.7	59.5%	3,307.8	57.9%	95.8	2.8%
June	5,724.4	3,425.8	59.8%	3,299.6	57.6%	126.2	3.7%
July	5,731.5	3,438.0	60.0%	3,314.9	57.8%	123.1	3.6%
August	5,738.5	3,417.8	59.6%	3,297.9	57.5%	119.9	3.5%
September (r)	5,745.8	3,407.3	59.3%	3,284.9	57.2%	122.3	3.6%
October (p)	5,752.8	3,408.8	59.3%	3,289.1	57.2%	119.7	3.5%
November							
December							

(r)=revised

(p)=preliminary

County	Oct.	Oct.	County	Oct.	Oct.
	2023	2024		2023	2024
Anderson	3.4	3.5	Lauderdale	5.3	4.6
Bedford	3.5	3.6	Lawrence	3.7	3.7
Benton	4.0	4.3	Lewis	3.5	3.6
Bledsoe	5.2	5.1	Lincoln	3.3	3.5
Blount	3.0	3.1	Loudon	3.3	3.5
Bradley	3.6	3.7	Macon	3.0	3.1
Campbell	4.1	3.9	Madison	3.5	3.8
Cannon	3.4	3.4	Marion	4.1	3.9
Carroll	4.3	4.3	Marshall	3.3	3.6
Carter	3.8	3.9	Maury	2.8	3.1
Ceatham	2.7	2.8	McMinn	4.3	4.5
Chester	3.2	3.4	McNairy	4.8	5.1
Claiborne	3.8	3.9	Meigs	5.2	4.5
Clay	4.4	4.6	Monroe	3.8	3.8
Cocke	4.1	5.3	Montgomery	3.9	3.9
Coffee	4.1	3.5	Moore	2.5	2.6
Crockett	3.1	3.3	Morgan	4.2	4.0
Cumberland	4.2	4.0	Obion	4.0	4.6
Davidson	2.7	2.9	Overton	3.5	3.4
Decatur	4.8	4.5	Perry	7.3	4.6
DeKalb	4.6	4.3	Pickett	4.4	3.6
Dickson	2.8	3.0	Polk	3.8	4.0
Dyer	3.7	3.8	Putnam	3.6	3.5
Fayette	3.7	4.0	Rhea	4.4	4.3
Fentress	3.7	3.5	Roane	3.8	3.7
Franklin	3.9	3.6	Robertson	2.8	3.0
Gibson	3.6	3.8	Rutherford	2.7	2.9
Giles	3.9	3.7	Scott	4.5	4.3
Grainger	3.6	3.7	Sequatchie	4.1	4.0
Greene	4.3	4.4	Sevier	2.5	2.6
Grundy	5.2	4.3	Shelby	4.5	4.7
Hamblen	3.6	3.5	Smith	3.0	3.0
Hamilton	3.3	3.4	Stewart	3.6	3.6
Hancock	4.5	4.4	Sullivan	3.6	3.6
Hardeman	4.3	4.5	Sumner	2.7	2.8
Hardin	4.1	3.8	Tipton	4.0	4.1
Hawkins	4.0	3.9	Trousdale	3.2	3.2
Haywood	4.1	4.7	Unicoi	3.9	5.6
Henderson	3.7	3.9	Union	3.8	4.0
Henry	3.6	3.9	Van Buren	5.7	4.5
Hickman	2.8	3.2	Warren	7.0	4.3
Houston	4.4	4.9	Washington	3.3	3.4
Humphreys	3.4	3.5	Wayne	3.8	3.6
Jackson	4.1	3.9	Weakley	3.7	6.0
Jefferson	3.5	3.5	White	3.9	3.8
Johnson	3.1	3.9	Williamson	2.6	2.6
Knox	2.9	2.9	Wilson	2.9	2.9
Lake	3.7	5.6			

\*Data Not Seasonally Adjusted



# Statewide

## Estimated Nonfarm Employment (in thousands)

Industry	Oct. 2023	Revised Sep. 2024	Preliminary Oct. 2024	Net Change	
				Sep. 2024	Oct. 2023
Total Nonfarm	3314.6	3,347.3	<b>3,357.5</b>	10.2	42.9
Total Private	2863.2	2,896.5	<b>2,900.7</b>	4.2	37.5
Goods Producing	517.3	524.7	<b>525.5</b>	0.8	8.2
Mining, Logging & Construction	157.5	162.6	<b>163.2</b>	0.6	5.7
Mining & Logging	4.5	4.7	<b>4.7</b>	0.0	0.2
Construction	153.0	157.9	<b>158.5</b>	0.6	5.5
Construction of Buildings	32.6	34.2	<b>34.9</b>	0.7	2.3
Heavy and Civil Engineering	20.0	20.9	<b>21.1</b>	0.2	1.1
Specialty Trade Contractors	100.4	102.8	<b>102.5</b>	-0.3	2.1
Manufacturing	359.8	362.1	<b>362.3</b>	0.2	2.5
Durable Goods Manufacturing	230.8	234.4	<b>235.2</b>	0.8	4.4
Wood Product Manufacturing	13.7	13.8	<b>13.8</b>	0.0	0.1
Nonmetallic Mineral Product Manufacturing	15.3	15.6	<b>15.7</b>	0.1	0.4
Primary Metal Manufacturing	11.0	11.1	<b>11.2</b>	0.1	0.2
Fabricated Metal Product Manufacturing	41.8	42.9	<b>43.1</b>	0.2	1.3
Machinery Manufacturing	24.5	25.0	<b>25.0</b>	0.0	0.5
Computer & Electronic Product Manufacturing	7.8	7.9	<b>8.0</b>	0.1	0.2
Electrical Equipment & Appliance Manufacturing	18.3	18.7	<b>18.9</b>	0.2	0.6
Transportation Equipment Manufacturing	73.7	74.7	<b>74.7</b>	0.0	1.0
Furniture & Related Product Manufacturing	8.7	8.7	<b>8.7</b>	0.0	0.0
Miscellaneous Manufacturing	16.0	16.0	<b>16.1</b>	0.1	0.1
Nondurable Goods Manufacturing	129.0	127.7	<b>127.1</b>	-0.6	-1.9
Food Manufacturing	39.8	39.8	<b>39.6</b>	-0.2	-0.2
Beverage & Tobacco Product Manufacturing	7.4	7.1	<b>7.1</b>	0.0	-0.3
Paper Manufacturing	13.1	13.1	<b>13.0</b>	-0.1	-0.1
Printing & Related Support Activities	8.0	7.9	<b>7.9</b>	0.0	-0.1
Chemical Manufacturing	27.0	26.5	<b>26.5</b>	0.0	-0.5
Plastics & Rubber Products Manufacturing	25.1	24.4	<b>24.3</b>	-0.1	-0.8
Service Providing	2797.3	2,822.6	<b>2,832.0</b>	9.4	34.7
Trade, Transportation, & Utilities	681.7	685.6	<b>688.6</b>	3.0	6.9
Wholesale Trade	134.6	137.9	<b>137.3</b>	-0.6	2.7
Merchant Wholesalers, Durable Goods	78.9	82.1	<b>81.6</b>	-0.5	2.7
Merchant Wholesalers, Nondurable Goods	48.4	48.5	<b>48.4</b>	-0.1	0.0
Wholesale Trade Agents & Brokers	7.3	7.3	<b>7.3</b>	0.0	0.0
Retail Trade	341.3	344.9	<b>345.6</b>	0.7	4.3
Motor Vehicle & Parts Dealers	48.2	47.4	<b>46.9</b>	-0.5	-1.3
Building Material, Garden Equipment, & Supplies	33.1	32.5	<b>32.4</b>	-0.1	-0.7
Food & Beverage Retailers	59.0	61.4	<b>61.6</b>	0.2	2.6
Furniture, Home Furnishings, Electronics, & Appliance	18.4	18.5	<b>18.8</b>	0.3	0.4
General Merchandise Retailers	78.1	79.8	<b>80.2</b>	0.4	2.1
Health & Personal Care Retailers	24.2	23.4	<b>23.4</b>	0.0	-0.8
Gasoline Stations & Fuel Dealers	27.0	28.4	<b>28.4</b>	0.0	1.4
Clothing, Clothing Accessories, Shoe & Jewelry Retail	21.9	21.9	<b>22.1</b>	0.2	0.2
Sporting Goods, Hobby, Music, & Book Retailers	31.4	31.6	<b>31.8</b>	0.2	0.4
Transportation, Warehousing, & Utilities	205.8	202.8	<b>205.7</b>	2.9	-0.1
Utilities	4.4	4.3	<b>4.4</b>	0.1	0.0
Transportation & Warehousing	201.4	198.5	<b>201.3</b>	2.8	-0.1
Truck Transportation	58.6	57.7	<b>58.1</b>	0.4	-0.5
Information	54.2	53.8	<b>53.1</b>	-0.7	-1.1
Financial Activities	184.0	183.7	<b>183.3</b>	-0.4	-0.7
Finance & Insurance	140.3	141.6	<b>141.5</b>	-0.1	1.2
Real Estate, Rental, & Leasing	43.7	42.1	<b>41.8</b>	-0.3	-1.9
Professional & Business Services	455.6	449.0	<b>449.0</b>	0.0	-6.6
Professional, Scientific, & Technical Services	173.6	180.8	<b>181.8</b>	1.0	8.2
Management of Companies & Enterprises	56.7	57.3	<b>57.5</b>	0.2	0.8
Administrative, Support, & Waste Management	225.3	210.9	<b>209.7</b>	-1.2	-15.6
Private Educational & Health Services	482.8	508.3	<b>511.1</b>	2.8	28.3
Private Educational Services	71.7	70.4	<b>72.1</b>	1.7	0.4
Health Care & Social Assistance	411.1	437.9	<b>439.0</b>	1.1	27.9
Ambulatory Health Care Services	172.6	186.0	<b>188.3</b>	2.3	15.7
Hospitals	123.2	129.6	<b>129.0</b>	-0.6	5.8
Nursing & Residential Care Facilities	59.0	62.1	<b>61.8</b>	-0.3	2.8
Social Assistance	56.3	60.2	<b>59.9</b>	-0.3	3.6
Leisure & Hospitality	359.6	361.2	<b>358.6</b>	-2.6	-1.0
Arts, Entertainment, & Recreation	44.9	49.1	<b>48.4</b>	-0.7	3.5
Accommodation & Food Services	314.7	312.1	<b>310.2</b>	-1.9	-4.5
Accommodation	39.5	38.7	<b>37.7</b>	-1.0	-1.8
Food Services & Drinking Places	275.2	273.4	<b>272.5</b>	-0.9	-2.7
Other Services	128.0	130.2	<b>131.5</b>	1.3	3.5
Government	451.4	450.8	<b>456.8</b>	6.0	5.4
Federal Government	57.2	58.2	<b>58.3</b>	0.1	1.1
State Government	100.9	99.1	<b>100.9</b>	1.8	0.0
State Government Educational Services	59.5	56.8	<b>58.6</b>	1.8	-0.9
State Government Excluding Educational Services	41.4	42.3	<b>42.3</b>	0.0	0.9
Local Government	293.3	293.5	<b>297.6</b>	4.1	4.3
Local Government Educational Services	149.4	144.0	<b>147.5</b>	3.5	-1.9
Local Government Excluding Educational Services	143.9	149.5	<b>150.1</b>	0.6	6.2

## Nonfarm Employment Summary

### Monthly Employment Changes

Total Nonfarm	+10,200
Government	+6,000
Local Government Education	+3,500
State Government Education	+1,800
Transportation & Warehousing	+2,800
Ambulatory Health care Services	+2,300
Private Educational Services	+1,700
Other Services	+1,300
Professional, Scientific & Tech Services	+1,000
Leisure & Hospitality	-2,600
Accommodation & Food Services	-1,900
Admin, Support & Waste Mgmt	-1,200
Information	-700
Wholesale Trade	-600
Motor Vehicle & Parts Dealers	-500

### Annual Changes

Total Nonfarm	+42,900
Health Care & Social Assistance	+27,900
Ambulatory Health Care Services	+15,700
Hospitals	+5,800
Professional, Scientific & Tech Services	+8,200
Local Government exc. Education	+6,200
Construction	+5,500
Durable Goods Manufacturing	+4,400
Admin, Support & Waste Mgmt	-15,600
Accommodation & Food Services	-4,500

### Monthly Unemployment Rates Counties

Increased	17
Decreased	63
Unchanged	15
<b>Highest/Lowest Rate</b>	<b>Rate</b>
Sevier, Moore, & Williamson County	2.6%
Weakley County	6.0%

The data from all the nonfarm employment estimates tables include all full- and part-time nonfarm wage and salary employees who worked during or received pay for any part of the pay period that includes the 12th of the month. This is a count of jobs by place of work. Agricultural workers, proprietors, self-employed persons, workers in private households, and unpaid family workers are excluded. These numbers may not add due to rounding. Data are based on the 2021 benchmark.

# Civilian Labor Force

## Civilian Labor Force Summary

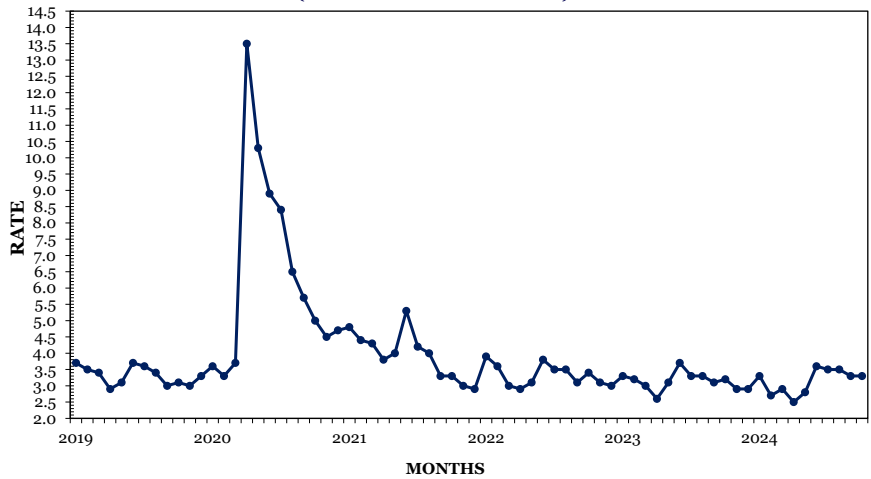
	October 2023				September 2024				October 2024			
	Labor Force	Employed	Unemployed	Rate	Labor Force	Employed	Unemployed	Rate	Labor Force	Employed	Unemployed	Rate
<b>Seasonally Adjusted</b>												
UNITED STATES	167,723,000	161,280,000	6,443,000	3.8	168,698,000	161,864,000	6,834,000	4.1	168,480,000	161,496,000	6,984,000	4.1
TENNESSEE	3,382,404	3,265,464	116,940	3.5	3,413,766	3,303,138	110,628	3.2	3,415,065	3,300,977	114,088	3.3
<b>Not Seasonally Adjusted</b>												
UNITED STATES	167,774,000	161,676,000	6,098,000	3.6	168,570,000	162,046,000	6,524,000	3.9	168,569,000	161,938,000	6,631,000	3.9
TENNESSEE	3,383,975	3,268,652	115,323	3.4	3,407,282	3,284,949	122,333	3.6	3,408,844	3,289,138	119,706	3.5
<b>Metropolitan Statistical Areas</b>												
Chattanooga	283,357	274,212	9,145	3.2	288,960	279,398	9,562	3.3	289,415	279,745	9,670	3.3
Clarksville	120,402	115,217	5,185	4.3	122,610	117,156	5,454	4.4	122,600	117,392	5,208	4.2
Cleveland	57,544	55,458	2,086	3.6	57,825	55,695	2,130	3.7	57,830	55,666	2,164	3.7
Jackson	63,662	61,487	2,175	3.4	64,493	62,039	2,454	3.8	64,411	62,044	2,367	3.7
Johnson City	92,818	89,587	3,231	3.5	93,442	89,957	3,485	3.7	93,667	90,167	3,500	3.7
Kingsport-Bristol	136,220	131,404	4,816	3.5	137,176	132,180	4,996	3.6	136,713	131,839	4,874	3.6
Knoxville	444,013	430,104	13,909	3.1	449,728	434,841	14,887	3.3	449,641	435,431	14,210	3.2
Memphis	618,328	593,242	25,086	4.1	621,528	594,285	27,243	4.4	623,874	596,894	26,980	4.3
Morristown	52,653	50,797	1,856	3.5	52,993	51,059	1,934	3.6	53,143	51,287	1,856	3.5
Nashville-Murfreesboro	1,149,198	1,117,852	31,346	2.7	1,154,736	1,120,533	34,203	3.0	1,154,465	1,121,173	33,292	2.9
<b>Micropolitan Statistical Areas</b>												
Athens	20,897	20,005	892	4.3	20,805	19,838	967	4.6	20,815	19,886	929	4.5
Brownsville	8,264	7,929	335	4.1	8,316	7,938	378	4.5	8,374	7,977	397	4.7
Cookeville	50,181	48,356	1,825	3.6	50,218	48,377	1,841	3.7	50,195	48,438	1,757	3.5
Crossville	23,994	22,997	997	4.2	24,382	23,359	1,023	4.2	24,324	23,344	980	4.0
Dayton	13,416	12,823	593	4.4	13,733	13,122	611	4.4	13,623	13,032	591	4.3
Dyersburg	16,834	16,214	620	3.7	16,979	16,326	653	3.8	16,983	16,342	641	3.8
Greeneville	28,619	27,375	1,244	4.3	28,561	27,312	1,249	4.4	28,630	27,370	1,260	4.4
Lawrenceburg	19,376	18,667	709	3.7	19,490	18,713	777	4.0	19,461	18,739	722	3.7
Lewisburg	15,851	15,335	516	3.3	15,745	15,166	579	3.7	15,773	15,207	566	3.6
Martin	15,174	14,606	568	3.7	14,909	14,310	599	4.0	15,240	14,333	907	6.0
McMinnville	17,385	16,160	1,225	7.0	16,558	15,873	685	4.1	16,732	16,007	725	4.3
Newport	14,801	14,187	614	4.1	15,111	14,465	646	4.3	15,177	14,373	804	5.3
Paris	13,640	13,149	491	3.6	13,574	13,054	520	3.8	13,603	13,074	529	3.9
Sevierville	56,633	55,206	1,427	2.5	58,960	57,382	1,578	2.7	58,706	57,195	1,511	2.6
Shelbyville	21,651	20,896	755	3.5	21,682	20,859	823	3.8	21,740	20,952	788	3.6
Tullahoma-Manchester	49,237	47,326	1,911	3.9	49,187	47,433	1,754	3.6	49,171	47,473	1,698	3.5
Union City	14,966	14,347	619	4.1	15,165	14,516	649	4.3	15,276	14,524	752	4.9
<b>Cities</b>												
Bartlett	30,368	29,388	980	3.2	30,378	29,339	1,039	3.4	30,468	29,445	1,023	3.4
Brentwood	23,425	22,782	643	2.7	23,479	22,809	670	2.9	23,455	22,828	627	2.7
Bristol	11,549	11,140	409	3.5	11,689	11,236	453	3.9	11,644	11,209	435	3.7
Chattanooga	89,904	86,445	3,459	3.8	91,389	87,956	3,433	3.8	91,642	88,194	3,448	3.8
Clarksville	65,239	62,565	2,674	4.1	66,254	63,406	2,848	4.3	66,208	63,477	2,731	4.1
Cleveland	20,752	19,905	847	4.1	20,837	19,997	840	4.0	20,815	19,985	830	4.0
Collierville	25,705	24,955	750	2.9	25,742	24,914	828	3.2	25,789	25,003	786	3.0
Columbia	20,825	20,171	654	3.1	20,972	20,210	762	3.6	20,960	20,226	734	3.5
Cookeville	14,446	13,872	574	4.0	14,458	13,881	577	4.0	14,421	13,883	538	3.7
Franklin	51,967	50,679	1,288	2.5	52,096	50,739	1,357	2.6	52,073	50,781	1,292	2.5
Gallatin	24,490	23,777	713	2.9	24,621	23,834	787	3.2	24,632	23,846	786	3.2
Germantown	19,370	18,812	558	2.9	19,377	18,780	597	3.1	19,425	18,848	577	3.0
Hendersonville	35,348	34,447	901	2.5	35,553	34,530	1,023	2.9	35,494	34,547	947	2.7
Jackson	31,929	30,721	1,208	3.8	32,428	31,085	1,343	4.1	32,400	31,057	1,343	4.1
Johnson City	32,076	31,017	1,059	3.3	32,379	31,188	1,191	3.7	32,399	31,249	1,150	3.5
Kingsport	22,561	21,722	839	3.7	22,855	21,909	946	4.1	22,745	21,855	890	3.9
Knoxville	100,088	96,838	3,250	3.2	101,438	98,024	3,414	3.4	101,357	98,120	3,237	3.2
LaVergne	20,362	19,794	568	2.8	20,480	19,873	607	3.0	20,493	19,876	617	3.0
Lebanon	19,224	18,539	685	3.6	19,260	18,573	687	3.6	19,271	18,589	682	3.5
Maryville	14,567	14,115	452	3.1	14,727	14,257	470	3.2	14,724	14,280	444	3.0
Memphis	284,677	270,443	14,234	5.0	285,241	269,992	15,249	5.3	286,043	270,960	15,083	5.3
Morristown	11,736	11,272	464	4.0	11,793	11,331	462	3.9	11,847	11,382	465	3.9
Mount Juliet	22,217	21,597	620	2.8	22,265	21,637	628	2.8	22,267	21,655	612	2.7
Murfreesboro	90,386	87,857	2,529	2.8	90,978	88,211	2,767	3.0	91,004	88,225	2,779	3.1
Nashville	421,235	409,740	11,495	2.7	423,882	411,237	12,645	3.0	423,574	411,295	12,279	2.9
Oak Ridge	14,535	14,055	480	3.3	14,721	14,227	494	3.4	14,737	14,241	496	3.4
Smyrna	31,141	30,325	816	2.6	31,375	30,447	928	3.0	31,404	30,452	952	3.0
Spring Hill	26,850	26,193	657	2.4	26,987	26,230	757	2.8	27,003	26,251	752	2.8

# Chattanooga MSA

## Monthly Employment Changes

Total Nonfarm	+1,100
Retail Trade	+400
Financial Activities	+200
Private Education & Health Services	+200
Local Government	+200
Mining, Logging & Construction	-100
Nondurable Goods manufacturing	-100
Wholesale Trade	-100
<b>Annual Employment Changes</b>	
Total Nonfarm	+6,600
Goods-Producing	+400
Service-Providing	+6,200

## CHATTANOOGA MSA UNEMPLOYMENT RATES (NOT SEASONALLY ADJUSTED)



## Estimated Nonfarm Employment (in thousands)

Industry	Oct. 2023	Revised Sep. 2024	Preliminary Oct. 2024	Net Change	
				Sep. 2024 Oct. 2024	Oct. 2023 Oct. 2024
Total Nonfarm	286.0	291.5	<b>292.6</b>	1.1	6.6
Total Private	252.9	258.2	<b>259.0</b>	0.8	6.1
Goods-Producing	53.2	53.8	<b>53.6</b>	-0.2	0.4
Mining, Logging, & Construction	13.4	13.7	<b>13.6</b>	-0.1	0.2
Manufacturing	39.8	40.1	<b>40.0</b>	-0.1	0.2
Durable Goods Manufacturing	25.2	25.9	<b>25.9</b>	0.0	0.7
Nondurable Goods Manufacturing	14.6	14.2	<b>14.1</b>	-0.1	-0.5
Service-Providing	232.8	237.7	<b>239.0</b>	1.3	6.2
Trade, Transportation, & Utilities	54.9	55.6	<b>56.0</b>	0.4	1.1
Wholesale Trade	9.1	9.3	<b>9.2</b>	-0.1	0.1
Retail Trade	28.6	29.2	<b>29.6</b>	0.4	1.0
Transportation, Warehousing, & Utilities	17.2	17.1	<b>17.2</b>	0.1	0.0
Information	3.4	3.3	<b>3.3</b>	0.0	-0.1
Financial Activities	24.4	25.7	<b>25.9</b>	0.2	1.5
Professional & Business Services	30.6	29.1	<b>29.2</b>	0.1	-1.4
Private Education & Health Services	43.8	45.8	<b>46.0</b>	0.2	2.2
Leisure & Hospitality	29.9	32.1	<b>32.1</b>	0.0	2.2
Other Services	12.7	12.8	<b>12.9</b>	0.1	0.2
Government	33.1	33.3	<b>33.6</b>	0.3	0.5
Federal Government	6.2	6.3	<b>6.3</b>	0.0	0.1
State Government	6.6	6.5	<b>6.6</b>	0.1	0.0
Local Government	20.3	20.5	<b>20.7</b>	0.2	0.4

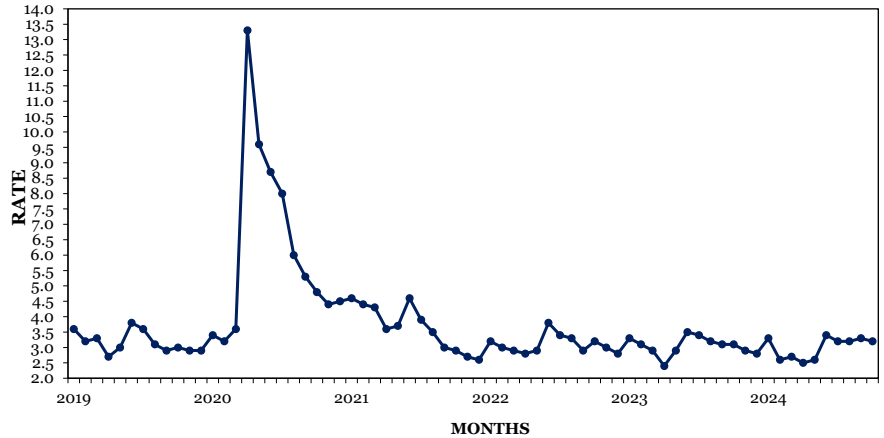
Chattanooga MSA: Hamilton County, Marion County, Sequatchie County, Catoosa County, GA, Dade County, GA, & Walker County, GA

# Knoxville MSA

## Monthly Employment Changes

Total Nonfarm	+1,400
Private Education & Health Services	+800
State Government	+500
Local Government	+400
Trade, Transportation & Utilities	+300
Manufacturing	+200
Leisure & Hospitality	-400
Financial Activities	-300
<b>Annual Employment Changes</b>	
Total Nonfarm	+7,200
Goods-Producing	+1,600
Service-Providing	+5,600

## KNOXVILLE MSA UNEMPLOYMENT RATES (NOT SEASONALLY ADJUSTED)



## Estimated Nonfarm Employment (in thousands)

Industry	Oct. 2023	Revised	Preliminary	Net Change	
		Sep. 2024	Oct. 2024	Sep. 2024 Oct. 2024	Oct. 2023 Oct. 2024
Total Nonfarm	438.5	444.3	<b>445.7</b>	1.4	7.2
Total Private	376.5	382.2	<b>382.7</b>	0.5	6.2
Goods-Producing	68.5	70.0	<b>70.1</b>	0.1	1.6
Mining, Logging, & Construction	21.2	21.7	<b>21.6</b>	-0.1	0.4
Manufacturing	47.3	48.3	<b>48.5</b>	0.2	1.2
Durable Goods Manufacturing	35.8	37.1	<b>37.2</b>	0.1	1.4
Nondurable Goods Manufacturing	11.5	11.2	<b>11.3</b>	0.1	-0.2
Service-Providing	370.0	374.3	<b>375.6</b>	1.3	5.6
Trade, Transportation, & Utilities	85.4	86.1	<b>86.4</b>	0.3	1.0
Wholesale Trade	18.9	19.5	<b>19.5</b>	0.0	0.6
Retail Trade	49.9	50.6	<b>50.8</b>	0.2	0.9
Transportation, Warehousing, & Utilities	16.6	16.0	<b>16.1</b>	0.1	-0.5
Information	6.7	6.7	<b>6.6</b>	-0.1	-0.1
Financial Activities	22.0	21.8	<b>21.5</b>	-0.3	-0.5
Professional & Business Services	70.5	69.9	<b>69.9</b>	0.0	-0.6
Private Education & Health Services	59.9	64.0	<b>64.8</b>	0.8	4.9
Leisure & Hospitality	47.0	46.8	<b>46.4</b>	-0.4	-0.6
Other Services	16.5	16.9	<b>17.0</b>	0.1	0.5
Government	62.0	62.1	<b>63.0</b>	0.9	1.0
Federal Government	5.7	5.7	<b>5.7</b>	0.0	0.0
State Government	20.2	19.8	<b>20.3</b>	0.5	0.1
Local Government	36.1	36.6	<b>37.0</b>	0.4	0.9

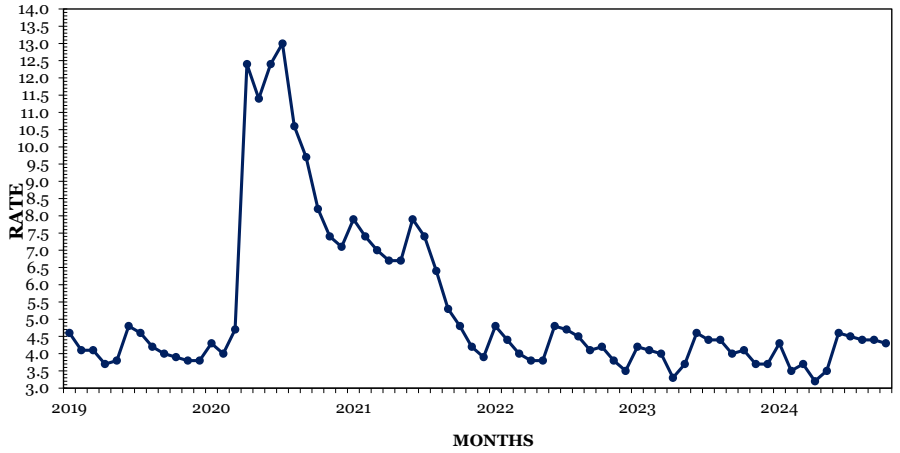
Knoxville MSA: Anderson County, Blount County, Campbell County, Grainger County, Knox County, Loudon County, Morgan County, Rane County, Union County

# Memphis MSA

## Monthly Employment Changes

Total Nonfarm	+3,600
Private Education & Health Services	+1,500
Professional & Business Services	+700
Transportation, Warehousing & Utilities	+500
State Government	+500
Local Government	+500
Mining, Logging & Construction	-200
Nondurable Goods Manufacturing	-200
<b>Annual Employment Changes</b>	
Total Nonfarm	+3,100
Goods-Producing	-200
Service-Providing	-3,300

## MEMPHIS MSA UNEMPLOYMENT RATES (NOT SEASONALLY ADJUSTED)



## Estimated Nonfarm Employment (in thousands)

Industry	Oct. 2023	Revised Sep. 2024	Preliminary Oct. 2024	Net Change Sep. 2024 - Oct. 2024	Net Change Oct. 2023 - Oct. 2024
Total Nonfarm	655.9	655.4	<b>659.0</b>	3.6	3.1
Total Private	570.1	572.4	<b>574.9</b>	2.5	4.8
Goods-Producing	67.2	67.4	<b>67.0</b>	-0.4	-0.2
Mining, Logging, & Construction	24.3	24.9	<b>24.7</b>	-0.2	0.4
Manufacturing	42.9	42.5	<b>42.3</b>	-0.2	-0.6
Durable Goods Manufacturing	25.1	25.2	<b>25.2</b>	0.0	0.1
Nondurable Goods Manufacturing	17.8	17.3	<b>17.1</b>	-0.2	-0.7
Service-Providing	588.7	588.0	<b>592.0</b>	4.0	3.3
Trade, Transportation, & Utilities	186.8	185.5	<b>186.1</b>	0.6	-0.7
Wholesale Trade	37.3	39.0	<b>39.0</b>	0.0	1.7
Retail Trade	62.3	61.8	<b>61.9</b>	0.1	-0.4
Transportation, Warehousing, & Utilities	87.2	84.7	<b>85.2</b>	0.5	-2.0
Information	5.6	5.5	<b>5.5</b>	0.0	-0.1
Financial Activities	28.3	28.5	<b>28.3</b>	-0.2	0.0
Professional & Business Services	91.9	89.4	<b>90.1</b>	0.7	-1.8
Professional, Scientific, & Technical Services	26.6	26.9	<b>27.2</b>	0.3	0.6
Management of Companies & Enterprises	9.1	8.8	<b>8.8</b>	0.0	-0.3
Administrative, Support, & Waste Management	56.2	53.7	<b>54.1</b>	0.4	-2.1
Private Education & Health Services	100.5	106.6	<b>108.1</b>	1.5	7.6
Leisure & Hospitality	62.1	61.5	<b>61.5</b>	0.0	-0.6
Other Services	27.7	28.0	<b>28.3</b>	0.3	0.6
Government	85.8	83.0	<b>84.1</b>	1.1	-1.7
Federal Government	16.4	16.7	<b>16.8</b>	0.1	0.4
State Government	16.4	16.0	<b>16.5</b>	0.5	0.1
Local Government	53.0	50.3	<b>50.8</b>	0.5	-2.2

Memphis MSA: Fayette County, Shelby County, Tipton County, Benton County, MS, DeSoto County, MS, Marshall County, MS, Tate County, MS, Tunica County, MS, Crittenden County, AR

# Nashville MSA

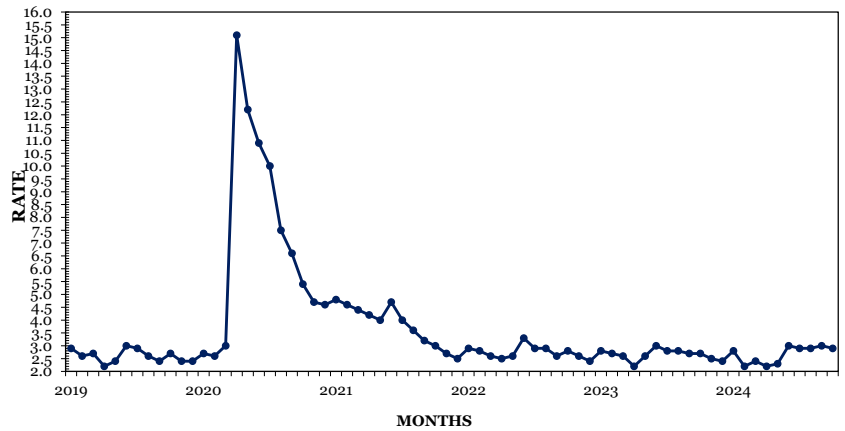
## Monthly Employment Changes

Total Nonfarm	+2,200
Professional & Business Services	+1,200
Transportation, Warehousing & Utilities	+1,100
Local Government	+800
Retail Trade	+500
State Government	+500
Leisure & Hospitality	-800
Wholesale Trade	-400

## Annual Employment Changes

Total Nonfarm	+8,300
Goods-Producing	+1,600
Service-Providing	+6,700

## NASHVILLE MSA UNEMPLOYMENT RATES (NOT SEASONALLY ADJUSTED)



## Estimated Nonfarm Employment (in thousands)

Industry	Oct. 2023	Revised Sep. 2024	Preliminary Oct. 2024	Net Change Sep. 2024 Oct. 2024	Oct. 2023 Oct. 2024
Total Nonfarm	1,163.2	1,169.3	<b>1,171.5</b>	2.2	8.3
Total Private	1,033.9	1,036.8	<b>1,037.7</b>	0.9	3.8
Goods-Producing	147.1	148.9	<b>148.7</b>	-0.2	1.6
Mining, Logging, & Construction	60.9	60.7	<b>60.6</b>	-0.1	-0.3
Manufacturing	86.2	88.2	<b>88.1</b>	-0.1	1.9
Durable Goods Manufacturing	60.6	62.8	<b>62.8</b>	0.0	2.2
Nondurable Goods Manufacturing	25.6	25.4	<b>25.3</b>	-0.1	-0.3
Service-Providing	1,016.1	1,020.4	<b>1,022.8</b>	2.4	6.7
Trade, Transportation, & Utilities	225.2	225.2	<b>226.4</b>	1.2	1.2
Wholesale Trade	48.3	48.9	<b>48.5</b>	-0.4	0.2
Retail Trade	104.3	104.9	<b>105.4</b>	0.5	1.1
Transportation, Warehousing, & Utilities	72.6	71.4	<b>72.5</b>	1.1	-0.1
Information	31.1	30.6	<b>30.3</b>	-0.3	-0.8
Financial Activities	78.1	76.4	<b>76.0</b>	-0.4	-2.1
Professional & Business Services	198.1	195.2	<b>196.4</b>	1.2	-1.7
Professional, Scientific, & Technical Services	84.0	83.2	<b>84.1</b>	0.9	0.1
Management of Companies & Enterprises	30.9	30.9	<b>31.2</b>	0.3	0.3
Administrative, Support, & Waste Management	83.2	81.1	<b>81.1</b>	0.0	-2.1
Private Education & Health Services	175.4	183.4	<b>183.5</b>	0.1	8.1
Private Educational Services	33.4	33.8	<b>34.1</b>	0.3	0.7
Health Care & Social Assistance	142.0	149.6	<b>149.4</b>	-0.2	7.4
Leisure & Hospitality	130.9	128.0	<b>127.2</b>	-0.8	-3.7
Other Services	48.0	49.1	<b>49.2</b>	0.1	1.2
Government	129.3	132.5	<b>133.8</b>	1.3	4.5
Federal Government	16.4	16.5	<b>16.5</b>	0.0	0.1
State Government	31.1	31.0	<b>31.5</b>	0.5	0.4
Local Government	81.8	85.0	<b>85.8</b>	0.8	4.0

**Nashville MSA:** Cannon County, Cheatham County, Davidson County, Dickson County, Hickman County, Macon County, Maury County, Robertson County, Rutherford County, Smith County, Sumner County, Trousdale County, Williamson County, Wilson County



## Nonfarm Employment (Smaller MSAs)

	Clarksville, TN-KY MSA		Cleveland, TN MSA		Jackson, TN MSA	
	Sep. 2024 Revised	Oct. 2024 Prelim.	Sep. 2024 Revised	Oct. 2024 Prelim.	Sep. 2024 Revised	Oct. 2024 Prelim.
Total Nonfarm	102,900	<b>103,200</b>	48,400	<b>48,300</b>	72,300	<b>72,500</b>
Total Private	81,700	<b>81,900</b>	42,600	<b>42,500</b>	57,800	<b>58,000</b>
Goods Producing	16,800	<b>16,800</b>	11,500	<b>11,400</b>	15,800	<b>15,800</b>
Mining, Logging & Construction	4,400	<b>4,400</b>	3,200	<b>3,200</b>	3,300	<b>3,300</b>
Manufacturing	12,400	<b>12,400</b>	8,300	<b>8,200</b>	12,500	<b>12,500</b>
Service Providing	86,100	<b>86,400</b>	36,900	<b>36,900</b>	56,500	<b>56,700</b>
Trade, Transportation, & Utilities	18,800	<b>19,000</b>	10,700	<b>10,800</b>	13,100	<b>13,200</b>
Wholesale Trade	N.A.	<b>N.A.</b>	1,100	<b>1,100</b>	2,900	<b>2,900</b>
Retail Trade	13,300	<b>13,500</b>	5,300	<b>5,300</b>	7,600	<b>7,600</b>
Transportation, Warehousing, & Utilities	2,100	<b>2,100</b>	4,300	<b>4,400</b>	2,600	<b>2,700</b>
Information	1,200	<b>1,200</b>	300	<b>300</b>	500	<b>500</b>
Financial Activities	3,600	<b>3,600</b>	1,400	<b>1,400</b>	2,100	<b>2,100</b>
Professional & Business Services	10,700	<b>10,600</b>	4,200	<b>4,200</b>	6,000	<b>6,000</b>
Private Educational & Health Services	14,700	<b>14,800</b>	6,800	<b>6,800</b>	11,800	<b>11,900</b>
Leisure & Hospitality	12,600	<b>12,500</b>	5,300	<b>5,100</b>	6,300	<b>6,300</b>
Other Services	3,300	<b>3,400</b>	2,400	<b>2,500</b>	2,200	<b>2,200</b>
Government	21,200	<b>21,300</b>	5,800	<b>5,800</b>	14,500	<b>14,500</b>
Federal Government	5,200	<b>5,100</b>	300	<b>300</b>	500	<b>500</b>
State Government	3,300	<b>3,300</b>	700	<b>700</b>	1,600	<b>1,600</b>
Local Government	12,700	<b>12,900</b>	4,800	<b>4,800</b>	12,400	<b>12,400</b>

	Johnson City, TN MSA		Kingsport-Bristol, TN-VA MSA		Morristown, TN MSA	
	Sep. 2024 Revised	Oct. 2024 Prelim.	Sep. 2024 Revised	Oct. 2024 Prelim.	Sep. 2024 Revised	Oct. 2024 Prelim.
Total Nonfarm	87,300	<b>87,600</b>	125,400	<b>125,000</b>	49,700	<b>49,900</b>
Total Private	69,500	<b>69,400</b>	108,200	<b>107,800</b>	42,600	<b>42,700</b>
Goods Producing	11,400	<b>11,300</b>	27,700	<b>27,400</b>	14,200	<b>14,300</b>
Mining, Logging & Construction	3,200	<b>3,200</b>	6,400	<b>6,300</b>	2,400	<b>2,400</b>
Manufacturing	8,200	<b>8,100</b>	21,300	<b>21,100</b>	11,800	<b>11,900</b>
Service Providing	75,900	<b>76,300</b>	97,700	<b>97,600</b>	35,500	<b>35,600</b>
Trade, Transportation, & Utilities	14,400	<b>14,500</b>	23,800	<b>23,900</b>	10,300	<b>10,300</b>
Wholesale Trade	2,900	<b>2,900</b>	3,800	<b>3,800</b>	1,700	<b>1,700</b>
Retail Trade	10,400	<b>10,500</b>	15,200	<b>15,300</b>	6,000	<b>6,000</b>
Transportation, Warehousing, & Utilities	1,100	<b>1,100</b>	4,800	<b>4,800</b>	2,600	<b>2,600</b>
Information	800	<b>800</b>	1,300	<b>1,300</b>	300	<b>300</b>
Financial Activities	5,000	<b>5,000</b>	4,000	<b>4,000</b>	1,000	<b>1,000</b>
Professional & Business Services	9,500	<b>9,400</b>	13,400	<b>13,300</b>	4,800	<b>4,800</b>
Private Educational & Health Services	15,200	<b>15,300</b>	18,600	<b>18,700</b>	6,200	<b>6,200</b>
Leisure & Hospitality	10,200	<b>10,100</b>	13,700	<b>13,500</b>	4,400	<b>4,400</b>
Other Services	3,000	<b>3,000</b>	5,700	<b>5,700</b>	1,400	<b>1,400</b>
Government	17,800	<b>18,200</b>	17,200	<b>17,200</b>	7,100	<b>7,200</b>
Federal Government	3,400	<b>3,400</b>	1,000	<b>1,000</b>	300	<b>300</b>
State Government	6,200	<b>6,500</b>	2,600	<b>2,600</b>	1,400	<b>1,400</b>
Local Government	8,200	<b>8,300</b>	13,600	<b>13,600</b>	5,400	<b>5,500</b>

**Clarksville MSA** is Montgomery County, Christian County, KY, & Trigg County, KY. **Cleveland MSA** is Bradley & Polk counties. **Jackson MSA** is Chester, Crockett, & Madison counties. **Johnson City MSA** is Carter, Unicoi, & Washington counties. **Kingsport-Bristol MSA** is Hawkins County, Sullivan County, Scott County, VA, Washington County, VA, & Bristol City, VA. **Morristown MSA** is Hamblen & Jefferson counties.

## U.S. Consumer Price Index — October 2024

Group	All Urban Consumers			Urban Wage Earners & Clerical Workers		
	Index	Percent Change		Index	Percent Change	
		Monthly	Yearly		Monthly	Yearly
<b>U.S. City Average</b>						
All Items (1982-84=100)	315.664	0.1	2.6	309.358	0.1	2.4
Food and beverages	330.051	0.2	2.1	329.591	0.1	2.1
Housing	337.470	0.2	4.2	333.545	0.2	4.1
Apparel	133.179	-1.7	0.3	133.821	-1.4	0.8
Transportation	269.724	0.0	-0.1	274.059	-0.1	-0.4
Medical care	567.870	0.3	3.3	575.625	0.3	3.4
<b>South</b>						
All Items (1982-84=100)	306.889	0.3	2.5	301.478	0.3	2.3
Food and beverages	325.457	0.4	2.2	324.693	0.3	2.2
Housing	316.182	0.3	3.9	317.442	0.3	4.0
Apparel	142.819	-1.6	-0.5	142.541	-1.7	-0.3
Transportation	270.045	0.5	0.0	268.302	0.5	-0.5
Medical care	537.012	0.3	3.3	552.632	0.3	3.5

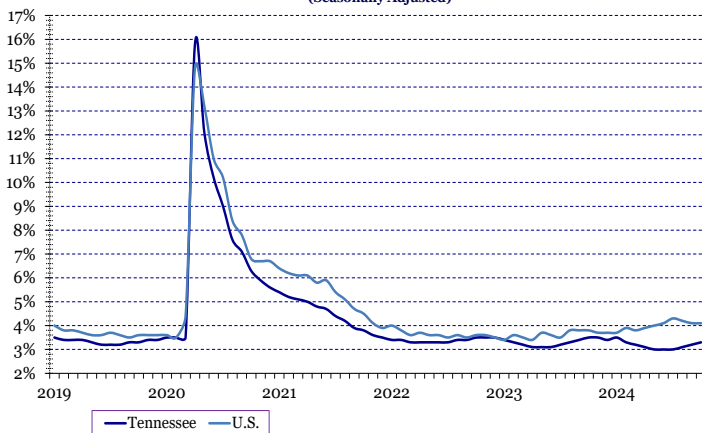
## Hours And Earnings Of Production Workers

	Average Weekly Earnings			Average Hourly Earnings			Average Weekly Hours		
	Oct.	Sep.	Oct.	Oct.	Sep.	Oct.	Oct.	Sep.	Oct.
	2023	2024	2024	2023	2024	2024	2023	2024	2024
Manufacturing	\$936.13	\$989.37	<b>\$972.84</b>	\$23.58	\$24.55	<b>\$24.14</b>	39.7	40.3	<b>40.3</b>
Durable Goods Manufacturing	\$1,006.14	\$1,046.21	<b>\$1,038.55</b>	\$24.54	\$26.09	<b>\$25.58</b>	41.0	40.1	<b>40.6</b>
Non-Durable Goods Manufacturing	\$817.88	\$884.67	<b>\$855.70</b>	\$21.81	\$21.79	<b>\$21.50</b>	37.5	40.6	<b>39.8</b>

## All Employee Hours And Earnings

	Average Weekly Earnings			Average Hourly Earnings			Average Weekly Hours		
	Oct.	Sep.	Oct.	Oct.	Sep.	Oct.	Oct.	Sep.	Oct.
	2023	2024	2024	2023	2024	2024	2023	2024	2024
Total Private	\$1,051.75	\$1,059.91	<b>\$1,040.42</b>	\$30.05	\$30.37	<b>\$30.07</b>	35.0	34.9	<b>34.6</b>
Goods-Producing	\$1,275.18	\$1,250.12	<b>\$1,252.12</b>	\$31.80	\$31.41	<b>\$31.07</b>	40.1	39.8	<b>40.3</b>
Mining, Logging & Construction	\$1,296.44	\$1,309.02	<b>\$1,328.04</b>	\$32.09	\$32.89	<b>\$32.55</b>	40.4	39.8	<b>40.8</b>
Manufacturing	\$1,266.80	\$1,223.85	<b>\$1,218.64</b>	\$31.67	\$30.75	<b>\$30.39</b>	40.0	39.8	<b>40.1</b>
Private Service-Providing	\$1,003.10	\$1,017.04	<b>\$995.32</b>	\$29.59	\$30.09	<b>\$29.80</b>	33.9	33.8	<b>33.4</b>
Trade, Transportation, & Utilities	\$911.57	\$888.11	<b>\$861.30</b>	\$27.13	\$26.67	<b>\$26.10</b>	33.6	33.3	<b>33.0</b>
Information	\$1,323.59	\$1,656.25	<b>\$1,538.24</b>	\$35.39	\$41.51	<b>\$40.48</b>	37.4	39.9	<b>38.0</b>
Financial Activities	\$1,475.25	\$1,494.75	<b>\$1,455.23</b>	\$39.34	\$39.86	<b>\$38.91</b>	37.5	37.5	<b>37.4</b>
Professional & Business Services	\$1,366.30	\$1,384.17	<b>\$1,344.68</b>	\$36.63	\$37.01	<b>\$36.74</b>	37.3	37.4	<b>36.6</b>
Private Education & Health Services	\$959.23	\$1,015.16	<b>\$1,010.66</b>	\$28.13	\$29.34	<b>\$29.99</b>	34.1	34.6	<b>33.7</b>
Leisure & Hospitality	\$532.13	\$502.39	<b>\$511.92</b>	\$19.35	\$19.03	<b>\$18.89</b>	27.5	26.4	<b>27.1</b>
Other Services	\$848.26	\$907.50	<b>\$891.08</b>	\$25.55	\$27.50	<b>\$27.25</b>	33.2	33.0	<b>32.7</b>

**TENNESSEE & UNITED STATES  
UNEMPLOYMENT RATES**  
(Seasonally Adjusted)



**TENNESSEE & UNITED STATES  
LABOR FORCE PARTICIPATION RATES**  
(Seasonally Adjusted)

