



# Tennessee Labor Market Report

Bill Lee  
Governor

Deniece Thomas  
Commissioner

November  
2024

## Highlights

**Pages 1-3:** Information about 2024 U.S. and state population estimates

**Page 4:** Tennessee annual average labor force statistics, and November county unemployment rates

**Pages 5-6:** Monthly Tennessee nonfarm employment, and MSA and city labor force data

**Pages 7-10:** Monthly nonfarm employment statistics for the four largest MSA's and graphs of the unemployment rates

**Page 11:** Monthly nonfarm employment for each small MSA in Tennessee

**Page 12:** Monthly consumer price index and hours and earnings for all workers by industry and production workers in manufacturing, graphs of Tennessee unemployment and labor force participation rates

## Vintage 2024 U.S. and State Population Estimates

### About Population Estimates

The U.S. Census Bureau recently released its Vintage 2024 population estimates for the nation and all 50 states, the District of Columbia and Puerto Rico. With each annual release of population estimates, the Population Estimates Program revises and updates the entire time series of estimates from April 1, 2020 to July 1 of the current year, which is referred to as the vintage year.

Among the uses for these estimates are federal funding allocations, as controls for major surveys including the Current Population Survey and the American Community Survey (ACS), community development, to aid business planning, and as denominators for statistical rates.

### National & Regional Population

Between July 1, 2023, and July 1, 2024, the total U.S. resident population increased 3,304,757 or about 1 percent. This left the total U.S. resident population for 2024 at 340,110,988. Over 84 percent of the annual increase was driven by international migration leaving only 16 percent resulting from natural increase, the excess of births over deaths. The South region was home to 39 percent of all U.S. residents and grew by over 1.77 million residents between 2023 and 2024. The Northeast, Midwest, West regions collectively gained just over 1.5 million residents. The South was the only region to see an increase in domestic migration.

### Growth & Decline in the States

Among the 50 states, only Mississippi, Vermont, and West Virginia lost population between the 2023 and 2024, but only slightly. West Virginia's population dropped 516, Vermont's 215, and Mississippi's 127. In all cases the percent change was below one half of one percent and driven by an excess of deaths over births. Net migration was positive in all three states.

Among the 47 states that experienced a population increase in 2024, Texas gained the most residents adding 562,941. Florida followed by adding 467,347 residents. Florida experienced the highest percentage growth among all states at 2 percent, however the District of Columbia grew faster than all states at 2.2 percent. Over 475,000 people migrated to Florida with 411,000 of those from international locations. Florida, Texas, Idaho, Nevada, North Carolina, South Carolina, and Utah were the only other states to see an increase of over 1.5 percent. Arizona, Delaware, Georgia, New Jersey, Tennessee, and Washington all had growth rates over 1 percent. At 1.1 percent, Tennessee had the 13th highest growth rate across all states and the District of Columbia and the 15th largest population overall. Of Tennessee's additional 79,446 residents, 61 percent migrated from other locations within the U.S. while 34.8 percent were from international locations. Only 4.2 percent of the Tennessee's population growth was due to natural increase.

California's over 39 million residents places it as the most populous state in the nation. California saw its population increase over 230,000 residents despite losing nearly 240,000 to domestic migration. Texas, Florida, New York, and Pennsylvania round out the five most populous states. About 37.4 percent of the national population resided in these five states.

Wyoming's 587,618 residents was the lowest in the nation. Vermont, Alaska, North Dakota, and South Dakota round out the five least populous states in 2024. These are the only states with fewer than 1 million residents and together represented only 1.1 percent of the nation's total population.

Go [here](#) for more information and additional datasets.

## 2024 U.S. and State Population Estimates

Area	2023	2024	Total Change	Percent Change	2024 Total Pop Rank	2024 % Chg Rank
United States	336,806,231	340,110,988	3,304,757	0.98%	-	-
Northeast	57,398,303	57,832,935	434,632	0.76%	4	3
Midwest	69,186,401	69,596,584	410,183	0.59%	3	4
South	130,893,358	132,665,693	1,772,335	1.35%	1	1
West	79,328,169	80,015,776	687,607	0.87%	2	2
Alabama	5,117,673	5,157,699	40,026	0.78%	24	23
Alaska	736,510	740,133	3,623	0.49%	48	40
Arizona	7,473,027	7,582,384	109,357	1.46%	14	10
Arkansas	3,069,463	3,088,354	18,891	0.62%	33	32
California	39,198,693	39,431,263	232,570	0.59%	1	34
Colorado	5,901,339	5,957,493	56,154	0.95%	21	17
Connecticut	3,643,023	3,675,069	32,046	0.88%	29	19
Delaware	1,036,423	1,051,917	15,494	1.49%	45	9
District of Columbia	687,324	702,250	14,926	2.17%	49	1
Florida	22,904,868	23,372,215	467,347	2.04%	3	2
Georgia	11,064,432	11,180,878	116,446	1.05%	8	14
Hawaii	1,441,387	1,446,146	4,759	0.33%	40	47
Idaho	1,971,122	2,001,619	30,497	1.55%	38	7
Illinois	12,642,259	12,710,158	67,899	0.54%	6	36
Indiana	6,880,131	6,924,275	44,144	0.64%	17	31
Iowa	3,218,414	3,241,488	23,074	0.72%	32	26
Kansas	2,951,500	2,970,606	19,106	0.65%	34	30
Kentucky	4,550,595	4,588,372	37,777	0.83%	26	21
Louisiana	4,588,071	4,597,740	9,669	0.21%	25	48
Maine	1,399,646	1,405,012	5,366	0.38%	42	46
Maryland	6,217,062	6,263,220	46,158	0.74%	18	25
Massachusetts	7,066,568	7,136,171	69,603	0.98%	16	15
Michigan	10,083,356	10,140,459	57,103	0.57%	10	35
Minnesota	5,753,048	5,793,151	40,103	0.70%	22	27
Mississippi	2,943,172	2,943,045	-127	0.00%	35	49
Missouri	6,208,038	6,245,466	37,428	0.60%	19	33
Montana	1,131,302	1,137,233	5,931	0.52%	43	37
Nebraska	1,987,864	2,005,465	17,601	0.89%	37	18
Nevada	3,214,363	3,267,467	53,104	1.65%	31	6
New Hampshire	1,402,199	1,409,032	6,833	0.49%	41	41
New Jersey	9,379,642	9,500,851	121,209	1.29%	11	11
New Mexico	2,121,164	2,130,256	9,092	0.43%	36	45
New York	19,737,367	19,867,248	129,881	0.66%	4	29
North Carolina	10,881,189	11,046,024	164,835	1.51%	9	8
North Dakota	789,047	796,568	7,521	0.95%	47	16
Ohio	11,824,034	11,883,304	59,270	0.50%	7	39
Oklahoma	4,063,882	4,095,393	31,511	0.78%	28	24
Oregon	4,253,653	4,272,371	18,718	0.44%	27	43
Pennsylvania	13,017,721	13,078,751	61,030	0.47%	5	42
Rhode Island	1,103,429	1,112,308	8,879	0.80%	44	22
South Carolina	5,387,830	5,478,831	91,001	1.69%	23	5
South Dakota	918,305	924,669	6,364	0.69%	46	28
Tennessee	7,148,304	7,227,750	79,446	1.11%	15	13
Texas	30,727,890	31,290,831	562,941	1.83%	2	3
Utah	3,443,222	3,503,613	60,391	1.75%	30	4
Vermont	648,708	648,493	-215	-0.033%	50	51
Virginia	8,734,685	8,811,195	76,510	0.88%	12	20
Washington	7,857,320	7,958,180	100,860	1.28%	13	12
West Virginia	1,770,495	1,769,979	-516	-0.029%	39	50
Wisconsin	5,930,405	5,960,975	30,570	0.52%	20	38
Wyoming	585,067	587,618	2,551	0.44%	51	44

Source: U.S. Census Bureau

## 2024 U.S. and State Population Estimates

Area	Total Population Change	Vital Events			Net Migration		
		Natural Change	Births	Deaths	Total Migration	International	Domestic
United States	3,304,757	518,638	3,605,563	3,086,925	2,786,119	2,786,119	-
Northeast	434,632	59,344	574,868	515,524	375,311	567,420	-192,109
Midwest	410,183	52,741	735,023	682,282	357,523	406,737	-49,214
South	1,772,335	218,567	1,471,082	1,252,515	1,555,172	1,144,168	411,004
West	687,607	187,986	824,590	636,604	498,113	667,794	-169,681
Alabama	40,026	-1,732	57,541	59,273	41,791	15,763	26,028
Alaska	3,623	3,372	9,014	5,642	255	4,029	-3,774
Arizona	109,357	9,660	78,322	68,662	99,388	64,486	34,902
Arkansas	18,891	-727	35,161	35,888	19,617	6,152	13,465
California	232,570	110,466	400,601	290,135	121,482	361,057	-239,575
Colorado	56,154	17,294	62,497	45,203	38,649	33,227	5,422
Connecticut	32,046	1,831	34,609	32,778	30,154	36,214	-6,060
Delaware	15,494	-21	10,437	10,458	15,438	7,283	8,155
District of Columbia	14,926	2,761	7,746	4,985	12,165	12,502	-337
Florida	467,347	-7,321	220,659	227,980	475,339	411,322	64,017
Georgia	116,446	28,252	125,502	97,250	88,409	63,088	25,321
Hawaii	4,759	2,271	14,682	12,411	2,572	11,893	-9,321
Idaho	30,497	6,195	22,830	16,635	24,282	7,899	16,383
Illinois	67,899	11,012	125,355	114,343	56,720	112,955	-56,235
Indiana	44,144	9,159	79,422	70,263	35,120	30,852	4,268
Iowa	23,074	3,829	36,301	32,472	19,208	19,439	-231
Kansas	19,106	5,232	33,963	28,731	13,829	18,530	-4,701
Kentucky	37,777	-892	52,248	53,140	38,724	31,430	7,294
Louisiana	9,669	3,959	53,787	49,828	5,737	23,142	-17,405
Maine	5,366	-5,157	11,609	16,766	10,525	5,196	5,329
Maryland	46,158	11,604	65,609	54,005	34,591	53,100	-18,509
Massachusetts	69,603	6,718	67,851	61,133	62,737	90,217	-27,480
Michigan	57,103	-2,855	99,589	102,444	59,952	67,608	-7,656
Minnesota	40,103	11,780	61,438	49,658	28,379	29,540	-1,161
Mississippi	-127	-1,984	33,859	35,843	1,850	6,789	-4,939
Missouri	37,428	1,521	67,589	66,068	35,858	23,569	12,289
Montana	5,931	12	11,268	11,256	5,916	506	5,410
Nebraska	17,601	6,135	24,443	18,308	11,480	12,978	-1,498
Nevada	53,104	3,058	31,951	28,893	49,858	33,005	16,853
New Hampshire	6,833	-2,363	11,777	14,140	9,179	4,290	4,889
New Jersey	121,209	26,010	101,199	75,189	95,138	130,692	-35,554
New Mexico	9,092	-1,437	20,833	22,270	10,532	12,103	-1,571
New York	129,881	43,701	205,289	161,588	86,244	207,161	-120,917
North Carolina	164,835	12,632	121,281	108,649	152,080	69,792	82,288
North Dakota	7,521	2,725	9,592	6,867	4,835	5,126	-291
Ohio	59,270	-425	126,575	127,000	59,916	62,378	-2,462
Oklahoma	31,511	3,136	47,642	44,506	28,394	14,358	14,036
Oregon	18,718	-3,731	38,788	42,519	22,428	23,590	-1,162
Pennsylvania	61,030	-9,311	127,571	136,882	70,601	82,101	-11,500
Rhode Island	8,879	-362	9,924	10,286	9,220	9,525	-305
South Carolina	91,001	-517	57,999	58,516	91,277	23,234	68,043
South Dakota	6,364	2,588	11,311	8,723	3,748	1,616	2,132
Tennessee	79,446	3,358	83,223	79,865	76,124	27,648	48,476
Texas	562,941	158,753	388,115	229,362	404,836	319,569	85,267
Utah	60,391	23,986	45,695	21,709	36,353	33,133	3,220
Vermont	-215	-1,723	5,039	6,762	1,513	2,024	-511
Virginia	76,510	15,150	93,593	78,443	61,439	56,155	5,284
Washington	100,860	16,437	82,072	65,635	84,252	81,581	2,671
West Virginia	-516	-7,844	16,680	24,524	7,361	2,841	4,520
Wisconsin	30,570	2,040	59,445	57,405	28,478	22,146	6,332
Wyoming	2,551	403	6,037	5,634	2,146	1,285	861

Source: U.S. Census Bureau

# Tennessee Civilian Labor Workforce 1994-Present

# County Unemployment Rates\*

(NUMBERS IN THOUSANDS)

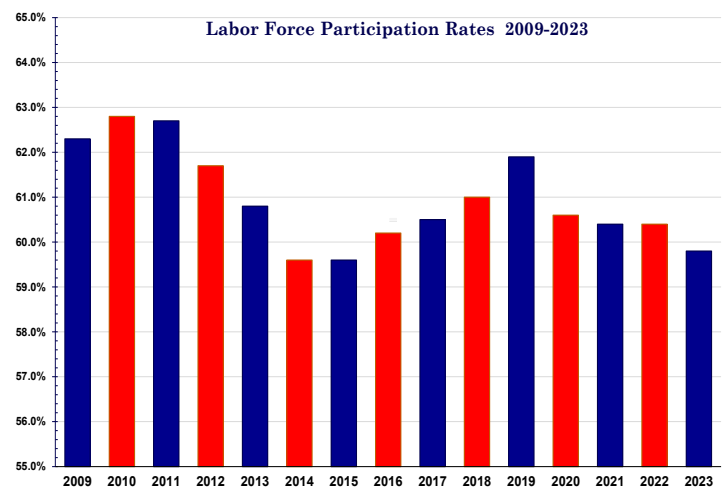
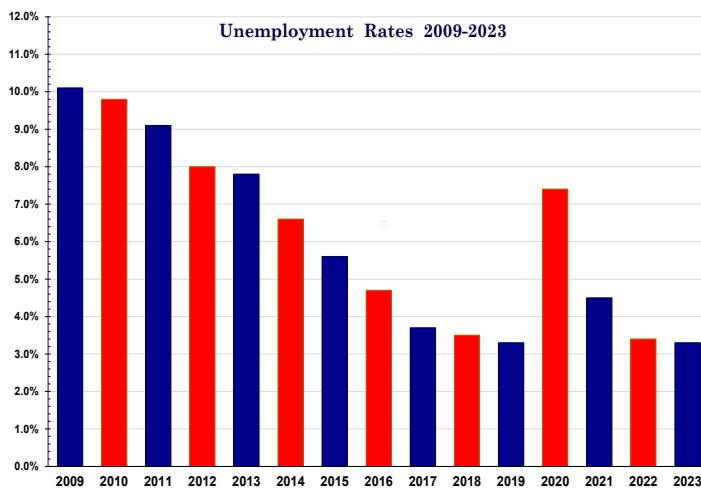
MONTHLY DATA NOT SEASONALLY ADJUSTED

Year and Month	Civilian noninstitutional population	Civilian Labor Force					
		Total	Participation Rate (%)	Employed		Unemployed	
				Total	Rate (%)	Total	Rate (%)
1994	4,003.3	2,657.2	66.4%	2,529.6	63.2%	127.6	4.8%
1995	4,075.6	2,723.1	66.8%	2,582.9	63.4%	140.3	5.2%
1996	4,150.1	2,763.2	66.6%	2,620.2	63.1%	143.0	5.2%
1997	4,218.9	2,780.6	65.9%	2,634.2	62.4%	146.4	5.3%
1998	4,272.7	2,810.1	65.8%	2,688.5	62.9%	121.6	4.3%
1999	4,317.6	2,843.0	65.8%	2,730.1	63.2%	112.9	4.0%
2000	4,358.4	2,849.0	65.4%	2,738.8	62.8%	110.2	3.9%
2001	4,401.2	2,857.7	64.9%	2,728.6	62.0%	129.0	4.5%
2002	4,444.9	2,898.9	65.2%	2,750.4	61.9%	148.5	5.1%
2003	4,492.3	2,904.6	64.7%	2,744.4	61.1%	160.2	5.5%
2004	4,541.6	2,897.8	63.8%	2,742.9	60.4%	154.9	5.3%
2005	4,610.1	2,898.5	62.9%	2,738.2	59.4%	160.3	5.5%
2006	4,692.4	3,014.7	64.2%	2,856.1	60.9%	158.7	5.3%
2007	4,760.1	3,043.3	63.9%	2,901.9	61.0%	141.3	4.6%
2008	4,821.7	3,060.8	63.5%	2,862.1	59.4%	198.7	6.5%
2009	4,868.4	3,032.7	62.3%	2,725.1	56.0%	307.5	10.1%
2010	4,925.4	3,093.1	62.8%	2,789.1	56.6%	304.1	9.8%
2011	4,973.5	3,117.5	62.7%	2,833.3	57.0%	284.2	9.1%
2012	5,020.4	3,096.3	61.7%	2,849.7	56.8%	246.6	8.0%
2013	5,064.6	3,078.9	60.8%	2,840.1	56.1%	238.8	7.8%
2014	5,109.9	3,043.6	59.6%	2,842.5	55.6%	201.0	6.6%
2015	5,159.2	3,074.2	59.6%	2,902.7	56.3%	171.5	5.6%
2016	5,213.9	3,136.4	60.2%	2,987.7	57.3%	148.7	4.7%
2017	5,284.9	3,197.0	60.5%	3,077.5	58.2%	119.5	3.7%
2018	5,342.7	3,257.1	61.0%	3,143.9	58.8%	113.3	3.5%
2019	5,397.4	3,339.4	61.9%	3,227.7	59.8%	111.7	3.3%
2020	5,446.8	3,299.2	60.6%	3,053.6	56.1%	245.6	7.4%
2021	5,496.6	3,321.4	60.4%	3,172.9	57.7%	148.5	4.5%
2022	5,570.0	3,362.0	60.4%	3,248.0	58.3%	114.0	3.4%
2023	5,648.7	3,379.6	59.8%	3,267.9	57.9%	111.7	3.3%
2024							
January	5,692.3	3,376.5	59.3%	3,257.4	57.2%	119.2	3.5%
February	5,698.4	3,394.5	59.6%	3,299.2	57.9%	95.3	2.8%
March	5,704.8	3,428.4	60.1%	3,327.2	58.3%	101.2	3.0%
April	5,711.3	3,413.7	59.8%	3,321.9	58.2%	91.8	2.7%
May	5,717.8	3,403.7	59.5%	3,307.8	57.9%	95.8	2.8%
June	5,724.4	3,425.8	59.8%	3,299.6	57.6%	126.2	3.7%
July	5,731.5	3,438.0	60.0%	3,314.9	57.8%	123.1	3.6%
August	5,738.5	3,417.8	59.6%	3,297.9	57.5%	119.9	3.5%
September	5,745.8	3,407.3	59.3%	3,284.9	57.2%	122.3	3.6%
October (r)	5,752.8	3,408.5	59.2%	3,289.1	57.2%	119.3	3.5%
November (p)	5,759.0	3,416.1	59.3%	3,295.8	57.2%	120.3	3.5%
December							

County	Nov. 2023	Nov. 2024	County	Nov. 2023	Nov. 2024
	Anderson	3.0		3.4	Lauderdale
Bedford	3.2	3.5	Lawrence	3.3	3.8
Benton	3.7	4.3	Lewis	3.1	3.7
Bledsoe	4.6	5.4	Lincoln	3.0	3.5
Blount	2.8	3.2	Loudon	3.2	3.5
Bradley	3.2	3.7	Macon	2.8	3.2
Campbell	3.8	4.1	Madison	3.2	3.7
Cannon	2.8	3.3	Marion	3.5	4.0
Carroll	3.8	4.2	Marshall	3.1	3.6
Carter	3.4	4.1	Maury	2.6	3.1
Cheatham	2.6	2.9	McMinn	3.9	4.4
Chester	2.9	3.5	McNairy	4.5	5.3
Claiborne	3.6	3.8	Meigs	4.5	4.5
Clay	4.4	4.9	Monroe	3.4	3.9
Cocke	3.9	4.9	Montgomery	3.6	3.9
Coffee	3.2	3.5	Moore	2.3	2.6
Crockett	2.9	3.4	Morgan	3.6	4.0
Cumberland	4.1	4.2	Obion	3.5	3.9
Davidson	2.6	2.9	Overton	3.1	3.4
Decatur	4.1	4.5	Perry	4.8	4.7
DeKalb	3.9	4.4	Pickett	4.3	3.9
Dickson	2.5	3.2	Polk	3.4	3.8
Dyer	3.5	3.7	Putnam	3.3	3.6
Fayette	3.4	4.1	Rhea	3.9	4.4
Fentress	3.3	3.7	Roane	3.5	3.8
Franklin	3.4	3.6	Robertson	2.5	3.0
Gibson	3.3	3.8	Rutherford	2.5	2.8
Giles	3.3	3.7	Scott	4.1	4.3
Grainger	3.3	3.8	Sequatchie	3.6	4.3
Greene	4.2	4.6	Sevier	2.4	2.7
Grundy	3.8	4.2	Shelby	4.1	4.6
Hamblen	3.3	3.5	Smith	2.8	3.1
Hamilton	3.0	3.5	Stewart	3.3	3.6
Hancock	4.1	4.5	Sullivan	3.3	3.7
Hardeman	4.0	4.6	Sumner	2.5	2.9
Hardin	3.6	3.9	Tipton	3.8	4.1
Hawkins	3.8	4.1	Trousdale	2.9	3.2
Haywood	3.6	4.6	Unicoi	4.0	6.0
Henderson	3.4	4.0	Union	3.5	4.1
Henry	3.5	3.8	Van Buren	4.1	4.5
Hickman	2.7	3.3	Warren	3.4	3.9
Houston	4.1	4.9	Washington	3.2	3.5
Humphreys	3.0	3.5	Wayne	3.3	3.6
Jackson	3.7	4.0	Weakley	3.4	3.9
Jefferson	3.2	3.6	White	3.2	3.9
Johnson	2.9	3.8	Williamson	2.4	2.6
Knox	2.7	3.0	Wilson	2.6	2.9
Lake	3.7	5.0			

\*Data Not Seasonally Adjusted

(r)=revised  
(p)=preliminary



# Statewide

## Estimated Nonfarm Employment (in thousands)

Industry	Nov. 2023	Revised Oct. 2024	Preliminary Nov. 2024	Net Change	
				Oct. 2024	Nov. 2023
Total Nonfarm	3323.7	3,359.1	<b>3,376.9</b>	17.8	53.2
Total Private	2870.1	2,902.2	<b>2,916.4</b>	14.2	46.3
Goods Producing	518.2	525.3	<b>528.3</b>	3.0	10.1
Mining, Logging & Construction	157.5	162.5	<b>163.0</b>	0.5	5.5
Mining & Logging	4.5	4.7	<b>4.7</b>	0.0	0.2
Construction	153.0	157.8	<b>158.3</b>	0.5	5.3
Construction of Buildings	32.2	34.8	<b>34.8</b>	0.0	2.6
Heavy and Civil Engineering	20.2	20.8	<b>21.2</b>	0.4	1.0
Specialty Trade Contractors	100.6	102.2	<b>102.3</b>	0.1	1.7
Manufacturing	360.7	362.8	<b>365.3</b>	2.5	4.6
Durable Goods Manufacturing	231.5	235.0	<b>237.2</b>	2.2	5.7
Wood Product Manufacturing	13.8	13.8	<b>14.0</b>	0.2	0.2
Nonmetallic Mineral Product Manufacturing	15.4	15.7	<b>15.8</b>	0.1	0.4
Primary Metal Manufacturing	11.0	11.1	<b>11.2</b>	0.1	0.2
Fabricated Metal Product Manufacturing	41.7	43.1	<b>43.7</b>	0.6	2.0
Machinery Manufacturing	24.6	25.0	<b>25.3</b>	0.3	0.7
Computer & Electronic Product Manufacturing	7.8	8.0	<b>8.0</b>	0.0	0.2
Electrical Equipment & Appliance Manufacturing	18.5	18.9	<b>19.0</b>	0.1	0.5
Transportation Equipment Manufacturing	74.0	74.6	<b>75.2</b>	0.6	1.2
Furniture & Related Product Manufacturing	8.7	8.7	<b>8.8</b>	0.1	0.1
Miscellaneous Manufacturing	16.0	16.1	<b>16.2</b>	0.1	0.2
Nondurable Goods Manufacturing	129.2	127.8	<b>128.1</b>	0.3	-1.1
Food Manufacturing	39.9	39.7	<b>39.9</b>	0.2	0.0
Beverage & Tobacco Product Manufacturing	7.3	7.1	<b>7.1</b>	0.0	-0.2
Paper Manufacturing	13.2	13.1	<b>13.1</b>	0.0	-0.1
Printing & Related Support Activities	8.0	7.9	<b>7.9</b>	0.0	-0.1
Chemical Manufacturing	27.0	26.5	<b>26.5</b>	0.0	-0.5
Plastics & Rubber Products Manufacturing	25.1	24.3	<b>24.3</b>	0.0	-0.8
Service Providing	2805.5	2,833.8	<b>2,848.6</b>	14.8	43.1
Trade, Transportation, & Utilities	692.2	689.2	<b>701.2</b>	12.0	9.0
Wholesale Trade	135.3	137.5	<b>138.9</b>	1.4	3.6
Merchant Wholesalers, Durable Goods	79.1	81.8	<b>82.7</b>	0.9	3.6
Merchant Wholesalers, Nondurable Goods	48.9	48.5	<b>48.9</b>	0.4	0.0
Wholesale Trade Agents & Brokers	7.3	7.2	<b>7.3</b>	0.1	0.0
Retail Trade	347.6	346.1	<b>353.7</b>	7.6	6.1
Motor Vehicle & Parts Dealers	46.9	47.3	<b>47.2</b>	-0.1	0.3
Building Material, Garden Equipment, & Supplies	33.2	32.3	<b>32.2</b>	-0.1	-1.0
Food & Beverage Retailers	60.4	61.7	<b>62.6</b>	0.9	2.2
Furniture, Home Furnishings, Electronics, & Appliance	18.7	18.8	<b>19.2</b>	0.4	0.5
General Merchandise Retailers	81.3	80.3	<b>83.2</b>	2.9	1.9
Health & Personal Care Retailers	24.5	23.4	<b>23.7</b>	0.3	-0.8
Gasoline Stations & Fuel Dealers	27.1	28.3	<b>28.4</b>	0.1	1.3
Clothing, Clothing Accessories, Shoe & Jewelry Retail	23.2	22.1	<b>23.5</b>	1.4	0.3
Sporting Goods, Hobby, Music, & Book Retailers	32.3	31.9	<b>33.7</b>	1.8	1.4
Transportation, Warehousing, & Utilities	209.3	205.6	<b>208.6</b>	3.0	-0.7
Utilities	4.4	4.4	<b>4.4</b>	0.0	0.0
Transportation & Warehousing	204.9	201.2	<b>204.2</b>	3.0	-0.7
Truck Transportation	58.3	58.6	<b>58.3</b>	-0.3	0.0
Information	54.8	52.9	<b>53.2</b>	0.3	-1.6
Financial Activities	183.9	182.4	<b>183.7</b>	1.3	-0.2
Finance & Insurance	140.4	140.6	<b>141.8</b>	1.2	1.4
Real Estate, Rental, & Leasing	43.5	41.8	<b>41.9</b>	0.1	-1.6
Professional & Business Services	449.4	449.0	<b>448.0</b>	-1.0	-1.4
Professional, Scientific, & Technical Services	172.1	181.6	<b>183.3</b>	1.7	11.2
Management of Companies & Enterprises	57.0	57.4	<b>57.6</b>	0.2	0.6
Administrative, Support, & Waste Management	220.3	210.0	<b>207.1</b>	-2.9	-13.2
Private Educational & Health Services	484.5	511.3	<b>513.5</b>	2.2	29.0
Private Educational Services	72.1	71.5	<b>71.9</b>	0.4	-0.2
Health Care & Social Assistance	412.4	439.8	<b>441.6</b>	1.8	29.2
Ambulatory Health Care Services	172.7	188.5	<b>189.5</b>	1.0	16.8
Hospitals	123.3	129.3	<b>130.1</b>	0.8	6.8
Nursing & Residential Care Facilities	59.1	61.9	<b>62.4</b>	0.5	3.3
Social Assistance	57.3	60.1	<b>59.6</b>	-0.5	2.3
Leisure & Hospitality	358.5	360.5	<b>358.0</b>	-2.5	-0.5
Arts, Entertainment, & Recreation	44.0	49.1	<b>46.1</b>	-3.0	2.1
Accommodation & Food Services	314.5	311.4	<b>311.9</b>	0.5	-2.6
Accommodation	39.1	37.9	<b>38.1</b>	0.2	-1.0
Food Services & Drinking Places	275.4	273.5	<b>273.8</b>	0.3	-1.6
Other Services	128.6	131.6	<b>130.5</b>	-1.1	1.9
Government	453.6	456.9	<b>460.5</b>	3.6	6.9
Federal Government	57.4	58.3	<b>58.3</b>	0.0	0.9
State Government	101.8	100.9	<b>101.8</b>	0.9	0.0
State Government Educational Services	60.3	58.6	<b>59.4</b>	0.8	-0.9
State Government Excluding Educational Services	41.5	42.3	<b>42.4</b>	0.1	0.9
Local Government	294.4	297.7	<b>300.4</b>	2.7	6.0
Local Government Educational Services	150.1	147.5	<b>148.1</b>	0.6	-2.0
Local Government Excluding Educational Services	144.3	150.2	<b>152.3</b>	2.1	8.0

## Nonfarm Employment Summary

### Monthly Employment Changes

Total Nonfarm	+17,800
Trade, Transportation & Utilities	+12,000
Retail Trade	+7,600
Transportation & Warehousing	+3,000
Local Government	+2,700
Local Government exc. Education	+2,100
Durable Goods Manufacturing	+2,200
Private Education & Health Services	+2,200
Health Care & Social Assistance	+1,800
Professional, Scientific & Tech Services	+1,700
Financial Activities	+1,300
Finance & Insurance	+1,200
Arts, Entertainment & Recreation	-3,000
Admin, Support & Waste Mgmt. Svcs.	-2,900
Other Services	-1,100

### Annual Changes

Total Nonfarm	+53,200
Health Care & Social Assistance	+29,200
Ambulatory Health Care Services	+16,800
Hospitals	+6,800
Professional, Scientific & Tech Services	+11,200
Local Government exc. Education	+8,000
Retail Trade	+6,100
Durable Goods Manufacturing	+5,700
Admin, Support & Waste Mgmt	-13,200
Accommodation & Food Services	-2,600

### Monthly Unemployment Rates Counties

Increased	48
Decreased	17
Unchanged	30
<b>Highest/Lowest Rate</b>	<b>Rate</b>
Moore & Williamson County	2.6%
Unicoi County	6.0%

The data from all the nonfarm employment estimates tables include all full- and part-time nonfarm wage and salary employees who worked during or received pay for any part of the pay period that includes the 12th of the month. This is a count of jobs by place of work. Agricultural workers, proprietors, self-employed persons, workers in private households, and unpaid family workers are excluded. These numbers may not add due to rounding. Data are based on the 2021 benchmark.

# Civilian Labor Force

## Civilian Labor Force Summary

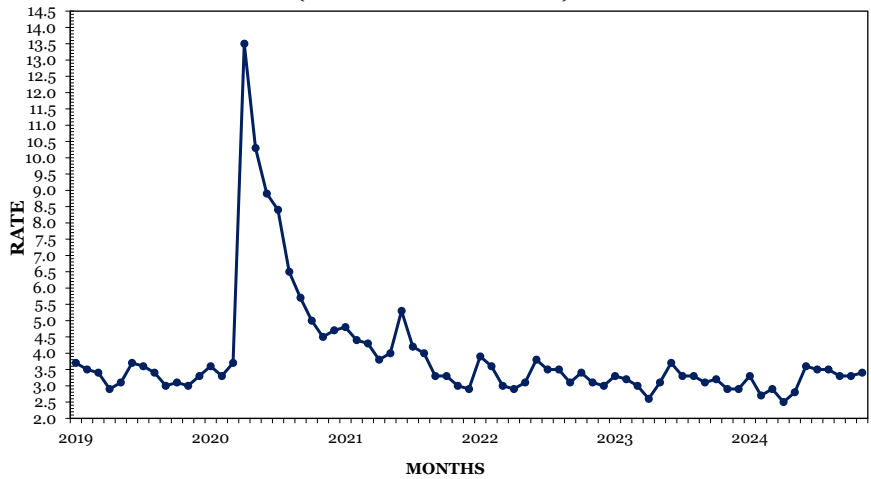
	November 2023				October 2024				November 2024			
	Labor Force	Employed	Unemployed	Rate	Labor Force	Employed	Unemployed	Rate	Labor Force	Employed	Unemployed	Rate
<b>Seasonally Adjusted</b>												
UNITED STATES	168,128,000	161,866,000	6,262,000	3.7	168,479,000	161,496,000	6,984,000	4.1	168,286,000	161,141,000	7,145,000	4.2
TENNESSEE	3,383,169	3,266,087	117,082	3.5	3,414,992	3,300,977	114,015	3.3	3,419,251	3,300,734	118,517	3.5
<b>Not Seasonally Adjusted</b>												
UNITED STATES	167,976,000	162,149,000	5,827,000	3.5	168,569,000	161,938,000	6,631,000	3.9	168,164,000	161,456,000	6,708,000	4.0
TENNESSEE	3,383,190	3,277,799	105,391	3.1	3,408,456	3,289,139	119,317	3.5	3,416,098	3,295,759	120,339	3.5
<b>Metropolitan Statistical Areas</b>												
Chattanooga	282,633	274,483	8,150	2.9	289,044	279,413	9,631	3.3	288,483	278,584	9,899	3.4
Clarksville	120,175	115,573	4,602	3.8	122,678	117,480	5,198	4.2	122,954	117,620	5,334	4.3
Cleveland	57,604	55,725	1,879	3.3	57,871	55,714	2,157	3.7	58,269	56,109	2,160	3.7
Jackson	63,823	61,823	2,000	3.1	64,557	62,206	2,351	3.6	64,782	62,424	2,358	3.6
Johnson City	92,868	89,799	3,069	3.3	93,789	90,266	3,523	3.8	93,937	90,311	3,626	3.9
Kingsport-Bristol	135,696	131,191	4,505	3.3	136,758	131,894	4,864	3.6	136,627	131,655	4,972	3.6
Knoxville	443,648	430,833	12,815	2.9	449,261	435,096	14,165	3.2	450,121	435,610	14,511	3.2
Memphis	617,394	594,440	22,954	3.7	623,621	596,778	26,843	4.3	626,320	599,406	26,914	4.3
Morristown	52,674	50,970	1,704	3.2	53,186	51,335	1,851	3.5	53,685	51,792	1,893	3.5
Nashville-Murfreesboro	1,148,664	1,119,552	29,112	2.5	1,154,409	1,121,172	33,237	2.9	1,155,814	1,122,262	33,552	2.9
<b>Micropolitan Statistical Areas</b>												
Athens	21,096	20,270	826	3.9	20,811	19,890	921	4.4	20,984	20,070	914	4.4
Brownsville	8,408	8,105	303	3.6	8,342	7,952	390	4.7	8,488	8,098	390	4.6
Cookeville	50,143	48,495	1,648	3.3	50,194	48,444	1,750	3.5	50,371	48,555	1,816	3.6
Crossville	24,082	23,100	982	4.1	24,307	23,327	980	4.0	24,383	23,349	1,034	4.2
Dayton	13,606	13,079	527	3.9	13,632	13,039	593	4.4	13,838	13,233	605	4.4
Dyersburg	17,012	16,416	596	3.5	16,985	16,350	635	3.7	17,171	16,530	641	3.7
Greeneville	28,783	27,585	1,198	4.2	28,631	27,377	1,254	4.4	28,835	27,523	1,312	4.6
Lawrenceburg	19,460	18,820	640	3.3	19,462	18,741	721	3.7	19,643	18,893	750	3.8
Lewisburg	15,826	15,336	490	3.1	15,745	15,186	559	3.6	15,735	15,163	572	3.6
Martin	15,328	14,811	517	3.4	15,246	14,344	902	5.9	15,081	14,498	583	3.9
McMinnville	16,969	16,393	576	3.4	16,731	16,010	721	4.3	16,861	16,206	655	3.9
Newport	14,714	14,137	577	3.9	15,179	14,374	805	5.3	15,026	14,283	743	4.9
Paris	13,697	13,212	485	3.5	13,586	13,057	529	3.9	13,622	13,108	514	3.8
Sevierville	56,428	55,089	1,339	2.4	58,696	57,187	1,509	2.6	58,468	56,918	1,550	2.7
Shelbyville	21,854	21,146	708	3.2	21,736	20,952	784	3.6	21,927	21,162	765	3.5
Tullahoma-Manchester	49,386	47,805	1,581	3.2	49,154	47,465	1,689	3.4	49,468	47,761	1,707	3.5
Union City	15,077	14,524	553	3.7	15,276	14,526	750	4.9	15,288	14,647	641	4.2
<b>Cities</b>												
Bartlett	30,292	29,403	889	2.9	30,460	29,441	1,019	3.3	30,514	29,480	1,034	3.4
Brentwood	23,360	22,780	580	2.5	23,450	22,828	622	2.7	23,469	22,827	642	2.7
Bristol	11,499	11,127	372	3.2	11,652	11,216	436	3.7	11,645	11,217	428	3.7
Chattanooga	89,575	86,545	3,030	3.4	91,536	88,094	3,442	3.8	91,357	87,897	3,460	3.8
Clarksville	65,173	62,710	2,463	3.8	66,240	63,524	2,716	4.1	66,353	63,590	2,763	4.2
Cleveland	20,744	19,996	748	3.6	20,828	20,002	826	4.0	20,990	20,139	851	4.1
Collierville	25,682	24,968	714	2.8	25,780	25,000	780	3.0	25,859	25,033	826	3.2
Columbia	20,835	20,227	608	2.9	20,956	20,226	730	3.5	20,988	20,266	722	3.4
Cookeville	14,425	13,890	535	3.7	14,426	13,887	539	3.7	14,468	13,908	560	3.9
Franklin	51,864	50,676	1,188	2.3	52,075	50,781	1,294	2.5	52,105	50,780	1,325	2.5
Gallatin	24,445	23,782	663	2.7	24,635	23,846	789	3.2	24,645	23,846	799	3.2
Germantown	19,342	18,821	521	2.7	19,417	18,845	572	2.9	19,428	18,870	558	2.9
Hendersonville	35,309	34,455	854	2.4	35,491	34,547	944	2.7	35,526	34,547	979	2.8
Jackson	31,886	30,787	1,099	3.4	32,476	31,139	1,337	4.1	32,467	31,156	1,311	4.0
Johnson City	32,083	31,081	1,002	3.1	32,431	31,282	1,149	3.5	32,418	31,284	1,134	3.5
Kingsport	22,482	21,700	782	3.5	22,752	21,870	882	3.9	22,802	21,875	927	4.1
Knoxville	99,870	96,911	2,959	3.0	101,256	98,045	3,211	3.2	101,382	98,071	3,311	3.3
LaVergne	20,345	19,836	509	2.5	20,490	19,876	614	3.0	20,514	19,900	614	3.0
Lebanon	19,202	18,605	597	3.1	19,267	18,588	679	3.5	19,314	18,637	677	3.5
Maryville	14,555	14,142	413	2.8	14,717	14,269	448	3.0	14,765	14,290	475	3.2
Memphis	283,611	270,582	13,029	4.6	285,887	270,927	14,960	5.2	285,963	271,288	14,675	5.1
Morristown	11,730	11,312	418	3.6	11,857	11,392	465	3.9	11,957	11,495	462	3.9
Mount Juliet	22,255	21,674	581	2.6	22,266	21,655	611	2.7	22,321	21,711	610	2.7
Murfreesboro	90,403	88,045	2,358	2.6	90,993	88,224	2,769	3.0	90,977	88,327	2,650	2.9
Nashville	420,538	409,779	10,759	2.6	423,557	411,296	12,261	2.9	423,651	411,166	12,485	2.9
Oak Ridge	14,468	14,061	407	2.8	14,726	14,229	497	3.4	14,742	14,229	513	3.5
Smyrna	31,145	30,390	755	2.4	31,403	30,452	951	3.0	31,396	30,488	908	2.9
Spring Hill	26,836	26,214	622	2.3	27,005	26,251	754	2.8	26,965	26,267	698	2.6

# Chattanooga MSA

## Monthly Employment Changes

Total Nonfarm	+600
Trade, Transportation & Utilities	+1,200
Retail Trade	+700
Transportation, Warehousing & Util.	+400
Financial Activities	+200
Professional & Business Services	-300
Private Education & Health Services	-300
Leisure & Hospitality	-200
<b>Annual Employment Changes</b>	
Total Nonfarm	+6,200
Goods-Producing	+200
Service-Providing	+6,000

## CHATTANOOGA MSA UNEMPLOYMENT RATES (NOT SEASONALLY ADJUSTED)



## Estimated Nonfarm Employment (in thousands)

Industry	Nov. 2023	Revised Oct. 2024	Preliminary Nov. 2024	Net Change	
				Oct. 2024 Nov. 2024	Nov. 2023 Nov. 2024
Total Nonfarm	287.0	292.6	<b>293.2</b>	0.6	6.2
Total Private	253.9	259.0	<b>259.5</b>	0.5	5.6
Goods-Producing	53.3	53.6	<b>53.5</b>	-0.1	0.2
Mining, Logging, & Construction	13.4	13.6	<b>13.5</b>	-0.1	0.1
Manufacturing	39.9	40.0	<b>40.0</b>	0.0	0.1
Durable Goods Manufacturing	25.4	25.9	<b>25.9</b>	0.0	0.5
Nondurable Goods Manufacturing	14.5	14.1	<b>14.1</b>	0.0	-0.4
Service-Providing	233.7	239.0	<b>239.7</b>	0.7	6.0
Trade, Transportation, & Utilities	56.0	56.1	<b>57.3</b>	1.2	1.3
Wholesale Trade	9.1	9.2	<b>9.3</b>	0.1	0.2
Retail Trade	29.3	29.6	<b>30.3</b>	0.7	1.0
Transportation, Warehousing, & Utilities	17.6	17.3	<b>17.7</b>	0.4	0.1
Information	3.4	3.3	<b>3.3</b>	0.0	-0.1
Financial Activities	24.4	25.8	<b>26.0</b>	0.2	1.6
Professional & Business Services	30.2	29.2	<b>28.9</b>	-0.3	-1.3
Private Education & Health Services	43.9	46.1	<b>45.8</b>	-0.3	1.9
Leisure & Hospitality	30.0	32.0	<b>31.8</b>	-0.2	1.8
Other Services	12.7	12.9	<b>12.9</b>	0.0	0.2
Government	33.1	33.6	<b>33.7</b>	0.1	0.6
Federal Government	6.1	6.3	<b>6.3</b>	0.0	0.2
State Government	6.6	6.6	<b>6.7</b>	0.1	0.1
Local Government	20.4	20.7	<b>20.7</b>	0.0	0.3

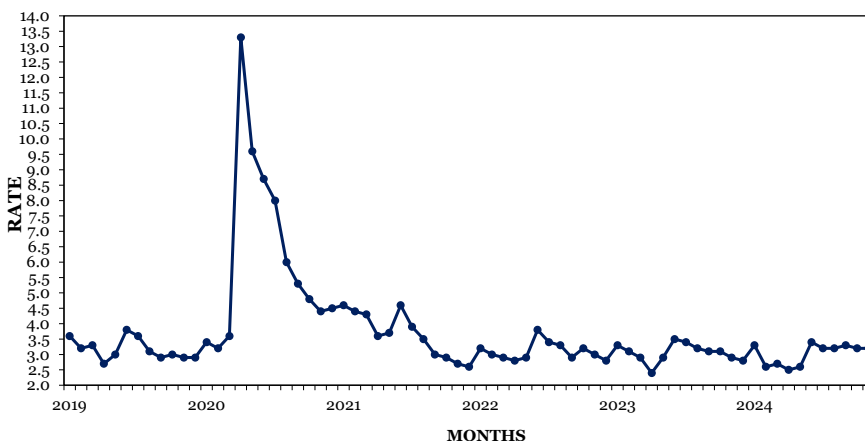
Chattanooga MSA: Hamilton County, Marion County, Sequatchie County, Catoosa County, GA, Dade County, GA, & Walker County, GA

# Knoxville MSA

## Monthly Employment Changes

Total Nonfarm	+2,300
Trade, Transportation & Utilities	+1,800
Retail Trade	+1,100
Transportation, Warehousing & Util.	+600
Local Government	+700
Durable Goods Manufacturing	+400
Leisure & Hospitality	-700
Private Education & Health Services	-400
<b>Annual Employment Changes</b>	
Total Nonfarm	+7,900
Goods-Producing	+2,000
Service-Providing	+5,900

## KNOXVILLE MSA UNEMPLOYMENT RATES (NOT SEASONALLY ADJUSTED)



## Estimated Nonfarm Employment (in thousands)

Industry	Nov. 2023	Revised	Preliminary	Net Change	
		Oct. 2024	Nov. 2024	Oct. 2024 Nov. 2024	Nov. 2023 Nov. 2024
Total Nonfarm	439.8	445.4	<b>447.7</b>	2.3	7.9
Total Private	377.4	382.4	<b>383.6</b>	1.2	6.2
Goods-Producing	68.6	70.1	<b>70.6</b>	0.5	2.0
Mining, Logging, & Construction	21.2	21.6	<b>21.7</b>	0.1	0.5
Manufacturing	47.4	48.5	<b>48.9</b>	0.4	1.5
Durable Goods Manufacturing	35.9	37.2	<b>37.6</b>	0.4	1.7
Nondurable Goods Manufacturing	11.5	11.3	<b>11.3</b>	0.0	-0.2
Service-Providing	371.2	375.3	<b>377.1</b>	1.8	5.9
Trade, Transportation, & Utilities	87.3	86.3	<b>88.1</b>	1.8	0.8
Wholesale Trade	19.0	19.5	<b>19.6</b>	0.1	0.6
Retail Trade	51.4	50.8	<b>51.9</b>	1.1	0.5
Transportation, Warehousing, & Utilities	16.9	16.0	<b>16.6</b>	0.6	-0.3
Information	6.7	6.6	<b>6.6</b>	0.0	-0.1
Financial Activities	21.8	21.4	<b>21.6</b>	0.2	-0.2
Professional & Business Services	69.7	69.9	<b>69.7</b>	-0.2	0.0
Private Education & Health Services	60.2	64.6	<b>64.2</b>	-0.4	4.0
Leisure & Hospitality	46.5	46.5	<b>45.8</b>	-0.7	-0.7
Other Services	16.6	17.0	<b>17.0</b>	0.0	0.4
Government	62.4	63.0	<b>64.1</b>	1.1	1.7
Federal Government	5.7	5.7	<b>5.8</b>	0.1	0.1
State Government	20.4	20.3	<b>20.6</b>	0.3	0.2
Local Government	36.3	37.0	<b>37.7</b>	0.7	1.4

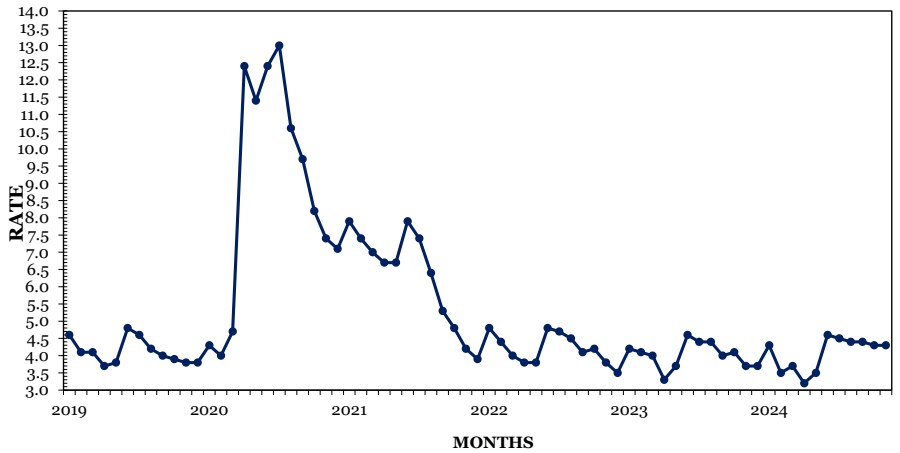
Knoxville MSA: Anderson County, Blount County, Campbell County, Grainger County, Knox County, Loudon County, Morgan County, Rane County, Union County

# Memphis MSA

## Monthly Employment Changes

Total Nonfarm	+4,300
Trade, Transportation & Utilities	+3,100
Retail Trade	+1,600
Transportation, Warehousing & Util.	+1,100
Local Government	+500
Manufacturing	+400
Private Education & Health Services	+400
Leisure & Hospitality	-400
<b>Annual Employment Changes</b>	
Total Nonfarm	+5,100
Goods-Producing	+600
Service-Providing	+4,500

## MEMPHIS MSA UNEMPLOYMENT RATES (NOT SEASONALLY ADJUSTED)



## Estimated Nonfarm Employment (in thousands)

Industry	Nov. 2023	Revised Oct. 2024	Preliminary Nov. 2024	Net Change Oct. 2024 Nov. 2024	Net Change Nov. 2023 Nov. 2024
Total Nonfarm	658.2	659.0	<b>663.3</b>	4.3	5.1
Total Private	571.9	575.3	<b>578.9</b>	3.6	7.0
Goods-Producing	67.0	67.2	<b>67.6</b>	0.4	0.6
Mining, Logging, & Construction	24.3	24.7	<b>24.7</b>	0.0	0.4
Manufacturing	42.7	42.5	<b>42.9</b>	0.4	0.2
Durable Goods Manufacturing	25.1	25.3	<b>25.6</b>	0.3	0.5
Nondurable Goods Manufacturing	17.6	17.2	<b>17.3</b>	0.1	-0.3
Service-Providing	591.2	591.8	<b>595.7</b>	3.9	4.5
Trade, Transportation, & Utilities	190.5	187.1	<b>190.2</b>	3.1	-0.3
Wholesale Trade	37.7	39.1	<b>39.5</b>	0.4	1.8
Retail Trade	64.0	62.1	<b>63.7</b>	1.6	-0.3
Transportation, Warehousing, & Utilities	88.8	85.9	<b>87.0</b>	1.1	-1.8
Information	5.7	5.5	<b>5.5</b>	0.0	-0.2
Financial Activities	28.1	28.1	<b>28.2</b>	0.1	0.1
Professional & Business Services	90.2	90.0	<b>90.2</b>	0.2	0.0
Professional, Scientific, & Technical Services	26.6	27.1	<b>27.3</b>	0.2	0.7
Management of Companies & Enterprises	9.0	8.8	<b>8.8</b>	0.0	-0.2
Administrative, Support, & Waste Management	54.6	54.1	<b>54.1</b>	0.0	-0.5
Private Education & Health Services	100.4	107.5	<b>107.9</b>	0.4	7.5
Leisure & Hospitality	62.2	61.6	<b>61.2</b>	-0.4	-1.0
Other Services	27.8	28.3	<b>28.1</b>	-0.2	0.3
Government	86.3	83.7	<b>84.4</b>	0.7	-1.9
Federal Government	16.5	16.8	<b>16.8</b>	0.0	0.3
State Government	16.7	16.1	<b>16.3</b>	0.2	-0.4
Local Government	53.1	50.8	<b>51.3</b>	0.5	-1.8

Memphis MSA: Fayette County, Shelby County, Tipton County, Benton County, MS, DeSoto County, MS, Marshall County, MS, Tate County, MS, Tunica County, MS, Crittenden County, AR

# Nashville MSA

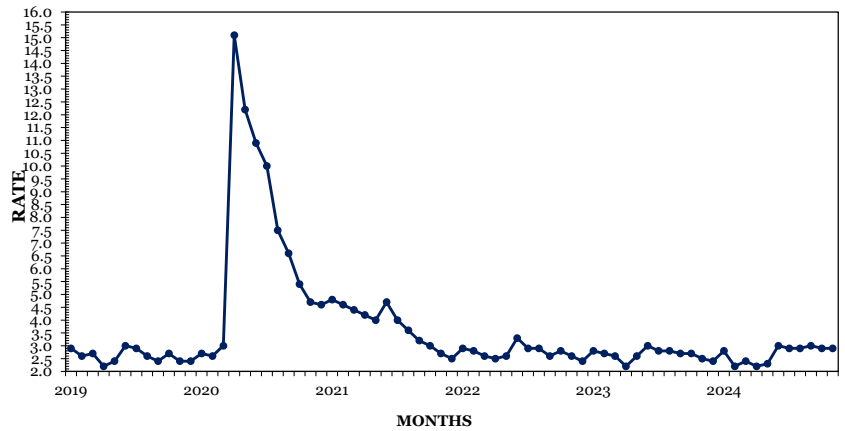
## Monthly Employment Changes

Total Nonfarm	+6,500
Retail Trade	+2,300
Transportation, Warehousing & Util.	+1,700
Wholesale Trade	+1,000
Private Education & Health Services	+1,100
Health Care & Social Assistance	+900
Admin, Support & Waste Mgmt. Svcs.	-800
Leisure & Hospitality	-700

## Annual Employment Changes

Total Nonfarm	+10,100
Goods-Producing	+2,100
Service-Providing	+8,000

## NASHVILLE MSA UNEMPLOYMENT RATES (NOT SEASONALLY ADJUSTED)



## Estimated Nonfarm Employment (in thousands)

Industry	Nov.	Revised	Preliminary	Net Change	
	2023	Oct. 2024	Nov. 2024	Oct. 2024 Nov. 2024	Nov. 2023 Nov. 2024
Total Nonfarm	1,168.2	1,171.8	<b>1,178.3</b>	6.5	10.1
Total Private	1,038.5	1,038.1	<b>1,044.2</b>	6.1	5.7
Goods-Producing	147.6	148.3	<b>149.7</b>	1.4	2.1
Mining, Logging, & Construction	60.8	60.3	<b>61.2</b>	0.9	0.4
Manufacturing	86.8	88.0	<b>88.5</b>	0.5	1.7
Durable Goods Manufacturing	61.2	62.7	<b>63.2</b>	0.5	2.0
Nondurable Goods Manufacturing	25.6	25.3	<b>25.3</b>	0.0	-0.3
Service-Providing	1,020.6	1,023.5	<b>1,028.6</b>	5.1	8.0
Trade, Transportation, & Utilities	229.7	227.3	<b>232.3</b>	5.0	2.6
Wholesale Trade	48.9	48.9	<b>49.9</b>	1.0	1.0
Retail Trade	106.6	105.6	<b>107.9</b>	2.3	1.3
Transportation, Warehousing, & Utilities	74.2	72.8	<b>74.5</b>	1.7	0.3
Information	31.4	30.2	<b>30.4</b>	0.2	-1.0
Financial Activities	78.2	75.5	<b>75.8</b>	0.3	-2.4
Professional & Business Services	196.6	196.3	<b>195.2</b>	-1.1	-1.4
Professional, Scientific, & Technical Services	83.4	83.8	<b>83.5</b>	-0.3	0.1
Management of Companies & Enterprises	31.0	31.1	<b>31.1</b>	0.0	0.1
Administrative, Support, & Waste Management	82.2	81.4	<b>80.6</b>	-0.8	-1.6
Private Education & Health Services	176.3	183.5	<b>184.6</b>	1.1	8.3
Private Educational Services	34.2	34.0	<b>34.2</b>	0.2	0.0
Health Care & Social Assistance	142.1	149.5	<b>150.4</b>	0.9	8.3
Leisure & Hospitality	130.6	127.6	<b>126.9</b>	-0.7	-3.7
Other Services	48.1	49.4	<b>49.3</b>	-0.1	1.2
Government	129.7	133.7	<b>134.1</b>	0.4	4.4
Federal Government	16.4	16.5	<b>16.4</b>	-0.1	0.0
State Government	31.3	31.5	<b>31.9</b>	0.4	0.6
Local Government	82.0	85.7	<b>85.8</b>	0.1	3.8

**Nashville MSA:** Cannon County, Cheatham County, Davidson County, Dickson County, Hickman County, Macon County, Maury County, Robertson County, Rutherford County, Smith County, Sumner County, Trousdale County, Williamson County, Wilson County



## Nonfarm Employment (Smaller MSAs)

	Clarksville, TN-KY MSA		Cleveland, TN MSA		Jackson, TN MSA	
	Oct. 2024 Revised	Nov. 2024 Prelim.	Oct. 2024 Revised	Nov. 2024 Prelim.	Oct. 2024 Revised	Nov. 2024 Prelim.
Total Nonfarm	103,400	<b>103,900</b>	48,500	<b>49,000</b>	72,700	<b>73,000</b>
Total Private	82,100	<b>82,400</b>	42,700	<b>43,200</b>	58,100	<b>58,400</b>
Goods Producing	16,800	<b>16,800</b>	11,500	<b>11,500</b>	15,800	<b>15,900</b>
Mining, Logging & Construction	4,400	<b>4,400</b>	3,200	<b>3,200</b>	3,300	<b>3,300</b>
Manufacturing	12,400	<b>12,400</b>	8,300	<b>8,300</b>	12,500	<b>12,600</b>
Service Providing	86,600	<b>87,100</b>	37,000	<b>37,500</b>	56,900	<b>57,100</b>
Trade, Transportation, & Utilities	19,000	<b>19,400</b>	10,800	<b>11,300</b>	13,200	<b>13,500</b>
Wholesale Trade	N.A.	<b>N.A.</b>	1,100	<b>1,200</b>	2,900	<b>2,900</b>
Retail Trade	13,500	<b>13,700</b>	5,300	<b>5,500</b>	7,600	<b>7,900</b>
Transportation, Warehousing, & Utilities	2,100	<b>2,200</b>	4,400	<b>4,600</b>	2,700	<b>2,700</b>
Information	1,200	<b>1,200</b>	300	<b>300</b>	500	<b>500</b>
Financial Activities	3,600	<b>3,600</b>	1,400	<b>1,400</b>	2,100	<b>2,100</b>
Professional & Business Services	10,700	<b>10,700</b>	4,200	<b>4,200</b>	6,100	<b>6,000</b>
Private Educational & Health Services	14,800	<b>14,800</b>	6,800	<b>6,900</b>	11,900	<b>11,900</b>
Leisure & Hospitality	12,600	<b>12,500</b>	5,200	<b>5,100</b>	6,300	<b>6,300</b>
Other Services	3,400	<b>3,400</b>	2,500	<b>2,500</b>	2,200	<b>2,200</b>
Government	21,300	<b>21,500</b>	5,800	<b>5,800</b>	14,600	<b>14,600</b>
Federal Government	5,100	<b>5,200</b>	300	<b>300</b>	500	<b>500</b>
State Government	3,300	<b>3,300</b>	700	<b>700</b>	1,600	<b>1,600</b>
Local Government	12,900	<b>13,000</b>	4,800	<b>4,800</b>	12,500	<b>12,500</b>

	Johnson City, TN MSA		Kingsport-Bristol, TN-VA MSA		Morristown, TN MSA	
	Oct. 2024 Revised	Nov. 2024 Prelim.	Oct. 2024 Revised	Nov. 2024 Prelim.	Oct. 2024 Revised	Nov. 2024 Prelim.
Total Nonfarm	87,900	<b>88,200</b>	125,000	<b>125,400</b>	49,900	<b>50,300</b>
Total Private	69,700	<b>69,900</b>	107,800	<b>108,200</b>	42,700	<b>42,800</b>
Goods Producing	11,400	<b>11,400</b>	27,300	<b>27,500</b>	14,300	<b>14,400</b>
Mining, Logging & Construction	3,200	<b>3,200</b>	6,300	<b>6,300</b>	2,400	<b>2,400</b>
Manufacturing	8,200	<b>8,200</b>	21,000	<b>21,200</b>	11,900	<b>12,000</b>
Service Providing	76,500	<b>76,800</b>	97,700	<b>97,900</b>	35,600	<b>35,900</b>
Trade, Transportation, & Utilities	14,500	<b>14,800</b>	23,900	<b>24,300</b>	10,300	<b>10,400</b>
Wholesale Trade	2,900	<b>2,900</b>	3,800	<b>3,800</b>	1,700	<b>1,700</b>
Retail Trade	10,500	<b>10,800</b>	15,300	<b>15,600</b>	6,000	<b>6,100</b>
Transportation, Warehousing, & Utilities	1,100	<b>1,100</b>	4,800	<b>4,900</b>	2,600	<b>2,600</b>
Information	800	<b>800</b>	1,300	<b>1,300</b>	300	<b>300</b>
Financial Activities	5,000	<b>5,000</b>	4,000	<b>4,000</b>	1,000	<b>1,000</b>
Professional & Business Services	9,400	<b>9,400</b>	13,400	<b>13,300</b>	4,800	<b>4,700</b>
Private Educational & Health Services	15,400	<b>15,400</b>	18,700	<b>18,700</b>	6,200	<b>6,200</b>
Leisure & Hospitality	10,200	<b>10,100</b>	13,500	<b>13,400</b>	4,400	<b>4,400</b>
Other Services	3,000	<b>3,000</b>	5,700	<b>5,700</b>	1,400	<b>1,400</b>
Government	18,200	<b>18,300</b>	17,200	<b>17,200</b>	7,200	<b>7,500</b>
Federal Government	3,400	<b>3,400</b>	1,000	<b>900</b>	300	<b>300</b>
State Government	6,500	<b>6,600</b>	2,600	<b>2,600</b>	1,400	<b>1,500</b>
Local Government	8,300	<b>8,300</b>	13,600	<b>13,700</b>	5,500	<b>5,700</b>

**Clarksville MSA** is Montgomery County, Christian County, KY, & Trigg County, KY. **Cleveland MSA** is Bradley & Polk counties. **Jackson MSA** is Chester, Crockett, & Madison counties. **Johnson City MSA** is Carter, Unicoi, & Washington counties. **Kingsport-Bristol MSA** is Hawkins County, Sullivan County, Scott County, VA, Washington County, VA, & Bristol City, VA. **Morristown MSA** is Hamblen & Jefferson counties.

## U.S. Consumer Price Index — November 2024

Group	All Urban Consumers			Urban Wage Earners & Clerical Workers		
	Index	Percent Change		Index	Percent Change	
		Monthly	Yearly		Monthly	Yearly
<b>U.S. City Average</b>						
All Items (1982-84=100)	315.493	-0.1	2.7	308.998	-0.1	2.6
Food and beverages	330.260	0.1	2.3	329.792	0.1	2.3
Housing	338.048	0.2	4.1	334.158	0.2	4.1
Apparel	129.542	-2.7	1.1	130.031	-2.8	1.3
Transportation	268.450	-0.5	0.5	272.209	-0.7	0.4
Medical care	568.773	0.2	3.1	576.804	0.2	3.2
<b>South</b>						
All Items (1982-84=100)	306.877	0.0	2.7	301.204	-0.1	2.4
Food and beverages	325.227	-0.1	2.2	324.419	-0.1	2.1
Housing	316.774	0.2	4.0	318.054	0.2	4.0
Apparel	139.580	-2.3	-0.3	139.294	-2.3	0.0
Transportation	269.052	-0.4	0.6	266.725	-0.6	0.0
Medical care	538.135	0.2	3.2	553.892	0.2	3.4

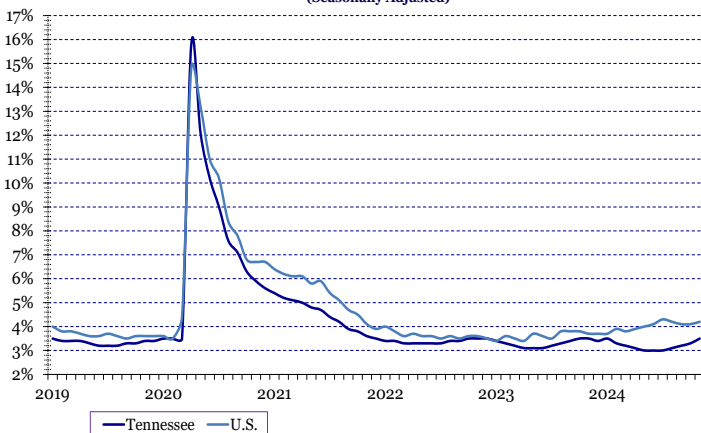
## Hours And Earnings Of Production Workers

	Average Weekly Earnings			Average Hourly Earnings			Average Weekly Hours		
	Nov.	Oct.	Nov.	Nov.	Oct.	Nov.	Nov.	Oct.	Nov.
	2023	2024	2024	2023	2024	2024	2023	2024	2024
Manufacturing	\$993.49	\$966.70	\$930.23	\$24.41	\$24.35	\$23.55	40.7	39.7	39.5
Durable Goods Manufacturing	\$1,059.85	\$1,035.60	\$995.75	\$25.85	\$25.89	\$24.77	41.0	40.0	40.2
Non-Durable Goods Manufacturing	\$872.34	\$844.76	\$820.22	\$21.70	\$21.55	\$21.36	40.2	39.2	38.4

## All Employee Hours And Earnings

	Average Weekly Earnings			Average Hourly Earnings			Average Weekly Hours		
	Nov.	Oct.	Nov.	Nov.	Oct.	Nov.	Nov.	Oct.	Nov.
	2023	2024	2024	2023	2024	2024	2023	2024	2024
Total Private	\$1,039.22	\$1,042.15	\$1,039.48	\$30.21	\$30.12	\$29.87	34.4	34.6	34.8
Goods-Producing	\$1,246.62	\$1,253.33	\$1,266.76	\$31.64	\$31.10	\$31.59	39.4	40.3	40.1
Mining, Logging & Construction	\$1,289.56	\$1,328.76	\$1,322.75	\$32.73	\$32.33	\$32.50	39.4	41.1	40.7
Manufacturing	\$1,227.70	\$1,221.20	\$1,241.36	\$31.16	\$30.53	\$31.19	39.4	40.0	39.8
Private Service-Providing	\$993.67	\$994.34	\$991.45	\$29.84	\$29.86	\$29.42	33.3	33.3	33.7
Trade, Transportation, & Utilities	\$864.88	\$860.99	\$908.54	\$26.53	\$26.33	\$26.88	32.6	32.7	33.8
Information	\$1,520.63	\$1,563.10	\$1,325.65	\$40.55	\$40.60	\$36.22	37.5	38.5	36.6
Financial Activities	\$1,448.20	\$1,457.31	\$1,455.12	\$38.93	\$39.07	\$38.70	37.2	37.3	37.6
Professional & Business Services	\$1,337.36	\$1,341.39	\$1,334.67	\$36.54	\$36.55	\$36.17	36.6	36.7	36.9
Private Education & Health Services	\$1,004.80	\$1,006.96	\$967.76	\$29.38	\$29.88	\$28.38	34.2	33.7	34.1
Leisure & Hospitality	\$510.81	\$519.79	\$518.31	\$19.06	\$19.11	\$19.34	26.8	27.2	26.8
Other Services	\$928.57	\$902.45	\$834.50	\$28.31	\$27.43	\$25.52	32.8	32.9	32.7

TENNESSEE & UNITED STATES  
UNEMPLOYMENT RATES  
(Seasonally Adjusted)



TENNESSEE & UNITED STATES  
LABOR FORCE PARTICIPATION RATES  
(Seasonally Adjusted)

