



Tennessee Labor Market Report

Bill Lee
Governor

Deniece Thomas
Commissioner

May
2025

Highlights

Pages 1-4: 2023 Per Capita Personal Income

Page 5 Tennessee annual average labor force statistics, and May county unemployment rates

Pages 6-7: Monthly Tennessee nonfarm employment, and MSA and city labor force data

Pages 8-11: Monthly nonfarm employment statistics for the four largest MSA's and graphs of the unemployment rates

Page 12: Monthly nonfarm employment for each small MSA in Tennessee

Page 13: Monthly consumer price index and hours and earnings for all workers by industry and production workers in manufacturing, graphs of Tennessee unemployment and labor force participation rates

2023 Per Capita Personal Income

Per capita personal income is defined as the annual total personal income of residents divided by the residential population as of July 1. Personal income is derived by summing the net earnings, rental income, personal dividend/interest income, and transfer payments by place of residence. Personal income excludes federal income tax deductions and other personal taxes and is reported in current dollars. In simpler terms, it is the total income on the front page of your 1040 tax form. This data can be influenced by large shifts in population, natural disasters (i.e., flooding or hurricanes), commuting populations (those that primarily work in other counties), and state and local taxes.

According to the U.S. Bureau of Economic Analysis, the 2023 Tennessee per capita personal income was \$62,229, up 5.1 percent from the previous year. The United States per capita personal income was \$69,810, up 5.4 percent from 2022.

In 2023, the Tennessee counties with the highest per capita personal income were Williamson County (\$128,610), Davidson County (\$92,496), Fayette County (\$81,728), Loudon County (\$70,063), Wilson County (\$68,675), Sumner County (\$67,865), Knox County (\$67,323), and Hamilton County (\$65,525). These eight counties are the only ones with per capita income greater than that of the state, and all are in one of the four largest Metropolitan Statistical Areas (MSA). Only Williamson, Davidson, Fayette, and Loudon County had a per capita income greater than the United States. Of counties not in a metropolitan statistical area, Sevier had the highest per capita income at \$57,533. This ranked 12th across all counties.

The counties with the lowest per capita income in 2023 were Lake County (\$32,554), Hancock County (\$33,223), Bledsoe County (\$36,038), Van Buren County (\$36,828), Hardeman County (\$36,966), Perry County (\$37,048), Wayne County (\$38,758), Scott County (\$39,326), and Clay County (\$39,424). None of these counties are in a metropolitan area.

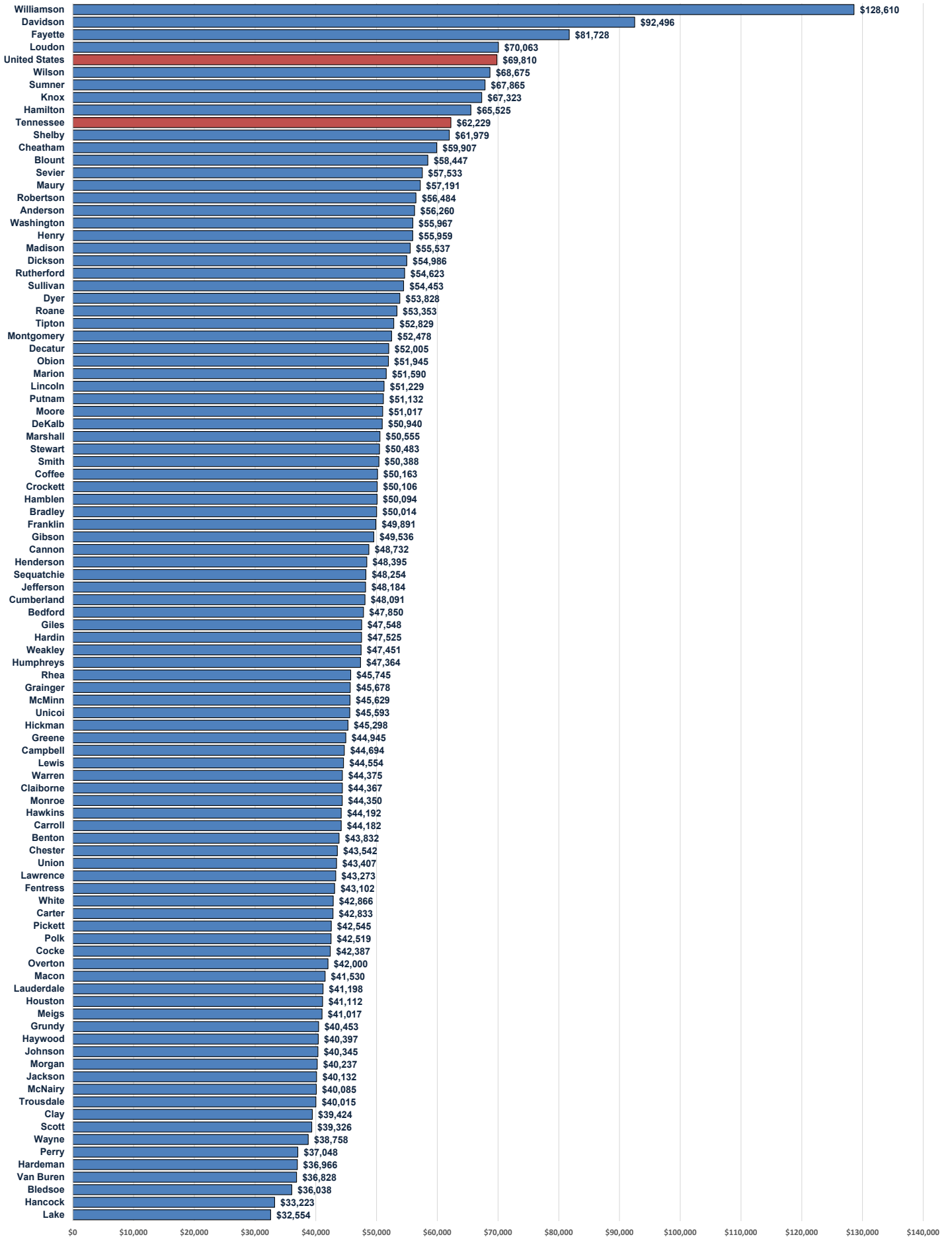
Between 2022 and 2023, only Clay County saw a decline in per capita income, down 4.6 percent. Lake County saw the largest relative increase at 7.9 percent, followed by Madison (6.5 percent), Fayette (6.2 percent), and Lewis (6.2 percent). Williamson County saw the highest absolute increase of \$7,186 while Meigs County had the lowest net increase at \$336.

Going back five years to 2018, Williamson County has seen the largest absolute increase in per capita income at \$37,279, while Lake County has seen the largest relative increase at 55.7 percent despite having the lowest income in all years. Pickett County saw the least growth in income with an increase of only 3.2 percent, or \$1,337, since 2018. As a result, its ranking dropped from 19th highest in 2018 to 72nd in 2023. Hickman County saw the greatest improvement in ranking going from the 71st highest income in 2018 to 56th in 2023. Its per capita income has increased \$11,980, or 36.0 percent, since 2018.

Follow the link below for more regional and local personal income data from the Bureau of Economic Analysis.

<https://www.bea.gov/data/income-saving/personal-income-county-metro-and-other-areas>

2023 Per Capita Personal Income



Source: Bureau of Economic Analysis

Per Capita Personal Income

Area	2018	2022	2023	Net Chg.	Pct. Chg.	Net Chg.	Pct. Chg.	Rank	
				2018-2023	2018-2023	2022-2023	2022-2023	2018	2023
United States	\$53,311	\$66,096	\$69,810	\$16,499	30.9%	\$3,714	5.6%	-	-
Tennessee	\$46,449	\$59,210	\$62,229	\$15,780	34.0%	\$3,019	5.1%	-	-
Anderson	\$41,664	\$53,607	\$56,260	\$14,596	35.0%	\$2,653	4.9%	15	15
Bedford	\$37,249	\$47,410	\$47,850	\$10,601	28.5%	\$440	0.9%	42	47
Benton	\$33,688	\$41,914	\$43,832	\$10,144	30.1%	\$1,918	4.6%	64	65
Bledsoe	\$26,404	\$35,182	\$36,038	\$9,634	36.5%	\$856	2.4%	93	93
Blount	\$43,538	\$55,312	\$58,447	\$14,909	34.2%	\$3,135	5.7%	11	11
Bradley	\$38,993	\$48,065	\$50,014	\$11,021	28.3%	\$1,949	4.1%	32	39
Campbell	\$33,584	\$43,205	\$44,694	\$11,110	33.1%	\$1,489	3.4%	67	58
Cannon	\$35,605	\$46,695	\$48,732	\$13,127	36.9%	\$2,037	4.4%	52	42
Carroll	\$33,637	\$42,468	\$44,182	\$10,545	31.3%	\$1,714	4.0%	66	64
Carter	\$33,375	\$40,863	\$42,833	\$9,458	28.3%	\$1,970	4.8%	69	71
Cheatham	\$43,972	\$57,638	\$59,907	\$15,935	36.2%	\$2,269	3.9%	10	10
Chester	\$33,423	\$41,085	\$43,542	\$10,119	30.3%	\$2,457	6.0%	68	66
Claiborne	\$34,840	\$42,772	\$44,367	\$9,527	27.3%	\$1,595	3.7%	56	61
Clay	\$31,640	\$41,327	\$39,424	\$7,784	24.6%	-\$1,903	-4.6%	82	87
Cocke	\$32,126	\$40,651	\$42,387	\$10,261	31.9%	\$1,736	4.3%	77	74
Coffee	\$38,005	\$47,687	\$50,163	\$12,158	32.0%	\$2,476	5.2%	39	36
Crockett	\$38,179	\$48,243	\$50,106	\$11,927	31.2%	\$1,863	3.9%	37	37
Cumberland	\$36,580	\$45,530	\$48,091	\$11,511	31.5%	\$2,561	5.6%	47	46
Davidson	\$65,594	\$87,568	\$92,496	\$26,902	41.0%	\$4,928	5.6%	2	2
Decatur	\$41,731	\$49,142	\$52,005	\$10,274	24.6%	\$2,863	5.8%	14	26
DeKalb	\$40,936	\$48,847	\$50,940	\$10,004	24.4%	\$2,093	4.3%	20	32
Dickson	\$40,445	\$52,968	\$54,986	\$14,541	36.0%	\$2,018	3.8%	25	19
Dyer	\$39,312	\$51,006	\$53,828	\$14,516	36.9%	\$2,822	5.5%	30	22
Fayette	\$54,013	\$76,980	\$81,728	\$27,715	51.3%	\$4,748	6.2%	3	3
Fentress	\$32,803	\$41,810	\$43,102	\$10,299	31.4%	\$1,292	3.1%	72	69
Franklin	\$38,247	\$47,746	\$49,891	\$11,644	30.4%	\$2,145	4.5%	36	40
Gibson	\$36,565	\$46,850	\$49,536	\$12,971	35.5%	\$2,686	5.7%	48	41
Giles	\$36,898	\$45,001	\$47,548	\$10,650	28.9%	\$2,547	5.7%	44	48
Grainger	\$33,668	\$43,630	\$45,678	\$12,010	35.7%	\$2,048	4.7%	65	53
Greene	\$35,478	\$43,721	\$44,945	\$9,467	26.7%	\$1,224	2.8%	53	57
Grundy	\$32,109	\$38,989	\$40,453	\$8,344	26.0%	\$1,464	3.8%	80	80
Hamblen	\$36,844	\$47,899	\$50,094	\$13,250	36.0%	\$2,195	4.6%	45	38
Hamilton	\$51,619	\$62,241	\$65,525	\$13,906	26.9%	\$3,284	5.3%	4	8
Hancock	\$26,139	\$32,401	\$33,223	\$7,084	27.1%	\$822	2.5%	94	94
Hardeman	\$28,361	\$35,079	\$36,966	\$8,605	30.3%	\$1,887	5.4%	91	91
Hardin	\$37,459	\$45,206	\$47,525	\$10,066	26.9%	\$2,319	5.1%	41	49
Hawkins	\$34,074	\$41,853	\$44,192	\$10,118	29.7%	\$2,339	5.6%	61	63
Haywood	\$31,154	\$38,728	\$40,397	\$9,243	29.7%	\$1,669	4.3%	85	81
Henderson	\$35,847	\$46,035	\$48,395	\$12,548	35.0%	\$2,360	5.1%	51	43
Henry	\$40,026	\$53,517	\$55,959	\$15,933	39.8%	\$2,442	4.6%	27	17
Hickman	\$33,318	\$43,462	\$45,298	\$11,980	36.0%	\$1,836	4.2%	71	56
Houston	\$31,664	\$39,334	\$41,112	\$9,448	29.8%	\$1,778	4.5%	81	78
Humphreys	\$36,795	\$44,674	\$47,364	\$10,569	28.7%	\$2,690	6.0%	46	51
Jackson	\$31,321	\$38,286	\$40,132	\$8,811	28.1%	\$1,846	4.8%	84	84
Jefferson	\$36,920	\$45,718	\$48,184	\$11,264	30.5%	\$2,466	5.4%	43	45

Source: Bureau of Economic Analysis

Per Capita Personal Income

Area	2018	2022	2023	Net Chg.	Pct. Chg.	Net Chg.	Pct. Chg.	Rank	
				2018-2023	2018-2023	2022-2023	2022-2023	2018	2023
Johnson	\$31,589	\$39,284	\$40,345	\$8,756	27.7%	\$1,061	2.7%	83	82
Knox	\$49,770	\$63,634	\$67,323	\$17,553	35.3%	\$3,689	5.8%	5	7
Lake	\$20,908	\$30,176	\$32,554	\$11,646	55.7%	\$2,378	7.9%	95	95
Lauderdale	\$29,967	\$39,746	\$41,198	\$11,231	37.5%	\$1,452	3.7%	88	77
Lawrence	\$34,129	\$41,698	\$43,273	\$9,144	26.8%	\$1,575	3.8%	60	68
Lewis	\$33,721	\$41,937	\$44,554	\$10,833	32.1%	\$2,617	6.2%	63	59
Lincoln	\$38,923	\$49,396	\$51,229	\$12,306	31.6%	\$1,833	3.7%	33	29
Loudon	\$48,939	\$66,918	\$70,063	\$21,124	43.2%	\$3,145	4.7%	7	4
Macon	\$36,439	\$43,962	\$45,629	\$9,190	25.2%	\$1,667	3.8%	50	54
Madison	\$32,111	\$38,427	\$40,085	\$7,974	24.8%	\$1,658	4.3%	79	85
Marion	\$32,125	\$41,149	\$41,530	\$9,405	29.3%	\$381	0.9%	78	76
Marshall	\$41,642	\$52,126	\$55,537	\$13,895	33.4%	\$3,411	6.5%	17	18
Maury	\$38,769	\$49,519	\$51,590	\$12,821	33.1%	\$2,071	4.2%	35	28
McMinn	\$38,067	\$49,111	\$50,555	\$12,488	32.8%	\$1,444	2.9%	38	33
McNairy	\$41,663	\$54,250	\$57,191	\$15,528	37.3%	\$2,941	5.4%	16	13
Meigs	\$32,754	\$40,681	\$41,017	\$8,263	25.2%	\$336	0.8%	73	79
Monroe	\$34,156	\$42,530	\$44,350	\$10,194	29.8%	\$1,820	4.3%	59	62
Montgomery	\$40,698	\$50,009	\$52,478	\$11,780	28.9%	\$2,469	4.9%	23	25
Moore	\$39,778	\$48,831	\$51,017	\$11,239	28.3%	\$2,186	4.5%	28	31
Morgan	\$29,996	\$38,505	\$40,237	\$10,241	34.1%	\$1,732	4.5%	87	83
Obion	\$37,975	\$49,348	\$51,945	\$13,970	36.8%	\$2,597	5.3%	40	27
Overton	\$34,024	\$40,604	\$42,000	\$7,976	23.4%	\$1,396	3.4%	62	75
Perry	\$33,343	\$35,759	\$37,048	\$3,705	11.1%	\$1,289	3.6%	70	90
Pickett	\$41,208	\$41,636	\$42,545	\$1,337	3.2%	\$909	2.2%	19	72
Polk	\$32,209	\$41,748	\$42,519	\$10,310	32.0%	\$771	1.8%	76	73
Putnam	\$39,515	\$48,938	\$51,132	\$11,617	29.4%	\$2,194	4.5%	29	30
Rhea	\$34,582	\$43,791	\$45,745	\$11,163	32.3%	\$1,954	4.5%	58	52
Roane	\$40,711	\$50,869	\$53,353	\$12,642	31.1%	\$2,484	4.9%	22	23
Robertson	\$41,538	\$53,977	\$56,484	\$14,946	36.0%	\$2,507	4.6%	18	14
Rutherford	\$40,874	\$52,122	\$54,623	\$13,749	33.6%	\$2,501	4.8%	21	20
Scott	\$30,438	\$37,530	\$39,326	\$8,888	29.2%	\$1,796	4.8%	86	88
Sequatchie	\$36,503	\$45,529	\$48,254	\$11,751	32.2%	\$2,725	6.0%	49	44
Sevier	\$40,197	\$54,656	\$57,533	\$17,336	43.1%	\$2,877	5.3%	26	12
Shelby	\$48,634	\$59,078	\$61,979	\$13,345	27.4%	\$2,901	4.9%	8	9
Smith	\$38,848	\$47,955	\$50,388	\$11,540	29.7%	\$2,433	5.1%	34	35
Stewart	\$40,636	\$48,554	\$50,483	\$9,847	24.2%	\$1,929	4.0%	24	34
Sullivan	\$42,308	\$51,628	\$54,453	\$12,145	28.7%	\$2,825	5.5%	12	21
Sumner	\$48,248	\$64,900	\$67,865	\$19,617	40.7%	\$2,965	4.6%	9	6
Tipton	\$39,309	\$50,178	\$52,829	\$13,520	34.4%	\$2,651	5.3%	31	24
Trousdale	\$29,878	\$38,261	\$40,015	\$10,137	33.9%	\$1,754	4.6%	89	86
Unicoi	\$35,475	\$43,539	\$45,593	\$10,118	28.5%	\$2,054	4.7%	54	55
Union	\$32,605	\$41,344	\$43,407	\$10,802	33.1%	\$2,063	5.0%	75	67
Van Buren	\$29,207	\$35,142	\$36,828	\$7,621	26.1%	\$1,686	4.8%	90	92
Warren	\$34,753	\$42,702	\$44,375	\$9,622	27.7%	\$1,673	3.9%	57	60
Washington	\$42,192	\$52,955	\$55,967	\$13,775	32.6%	\$3,012	5.7%	13	16
Wayne	\$28,311	\$36,576	\$38,758	\$10,447	36.9%	\$2,182	6.0%	92	89
Weakley	\$35,052	\$45,740	\$47,451	\$12,399	35.4%	\$1,711	3.7%	55	50
White	\$32,690	\$41,610	\$42,866	\$10,176	31.1%	\$1,256	3.0%	74	70
Williamson	\$91,331	\$121,424	\$128,610	\$37,279	40.8%	\$7,186	5.9%	1	1
Wilson	\$49,467	\$64,741	\$68,675	\$19,208	38.8%	\$3,934	6.1%	6	5

Source: Bureau of Economic Analysis

Tennessee Civilian Labor Workforce 1995-Present

County Unemployment Rates*

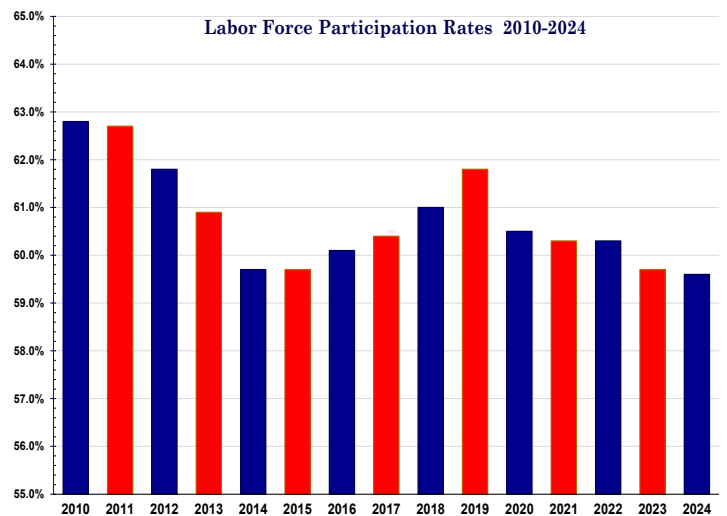
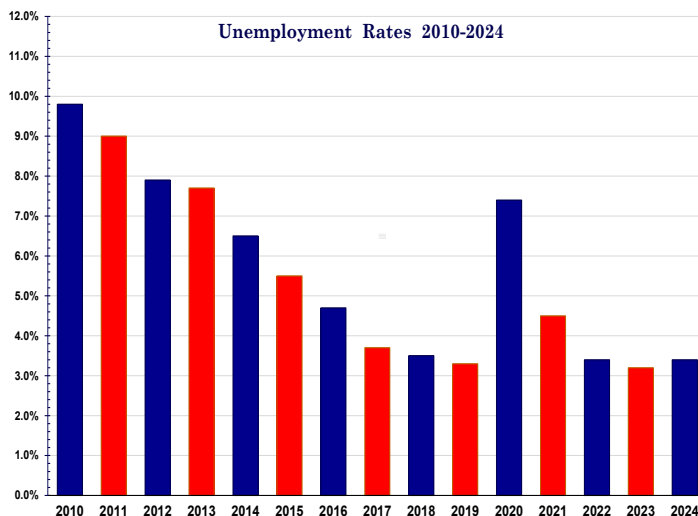
(NUMBERS IN THOUSANDS) MONTHLY DATA NOT SEASONALLY ADJUSTED

Year and Month	Civilian noninstitutional population	Civilian Labor Force					
		Total	Participation Rate (%)	Employed		Unemployed	
				Total	Rate (%)	Total	Rate (%)
1995	4,074.0	2,719.0	66.7%	2,579.8	63.3%	139.3	5.1%
1996	4,148.2	2,758.8	66.5%	2,615.2	63.0%	143.6	5.2%
1997	4,216.7	2,775.2	65.8%	2,630.3	62.4%	145.0	5.2%
1998	4,270.1	2,804.4	65.7%	2,683.0	62.8%	121.4	4.3%
1999	4,314.7	2,835.9	65.7%	2,723.6	63.1%	112.3	4.0%
2000	4,357.9	2,845.3	65.3%	2,736.0	62.8%	109.3	3.8%
2001	4,402.5	2,858.1	64.9%	2,726.6	61.9%	131.5	4.6%
2002	4,447.3	2,898.3	65.2%	2,748.6	61.8%	149.8	5.2%
2003	4,495.8	2,907.1	64.7%	2,746.0	61.1%	161.0	5.5%
2004	4,546.2	2,899.8	63.8%	2,745.2	60.4%	154.6	5.3%
2005	4,616.0	2,899.8	62.8%	2,740.4	59.4%	159.5	5.5%
2006	4,699.5	3,015.6	64.2%	2,858.7	60.8%	156.9	5.2%
2007	4,768.4	3,047.7	63.9%	2,906.1	60.9%	141.6	4.6%
2008	4,831.3	3,067.9	63.5%	2,869.5	59.4%	198.4	6.5%
2009	4,879.4	3,050.4	62.5%	2,733.2	56.0%	317.2	10.4%
2010	4,928.4	3,094.8	62.8%	2,791.6	56.6%	303.2	9.8%
2011	4,973.9	3,119.2	62.7%	2,837.1	57.0%	282.2	9.0%
2012	5,021.2	3,102.5	61.8%	2,856.5	56.9%	246.0	7.9%
2013	5,065.8	3,086.0	60.9%	2,849.5	56.3%	236.4	7.7%
2014	5,111.4	3,052.6	59.7%	2,852.7	55.8%	199.9	6.5%
2015	5,161.2	3,078.8	59.7%	2,908.0	56.3%	170.9	5.5%
2016	5,216.3	3,135.2	60.1%	2,987.2	57.3%	148.0	4.7%
2017	5,274.9	3,187.8	60.4%	3,068.3	58.2%	119.5	3.7%
2018	5,331.4	3,250.0	61.0%	3,137.0	58.8%	113.1	3.5%
2019	5,384.7	3,329.4	61.8%	3,218.1	59.8%	111.4	3.3%
2020	5,443.9	3,294.8	60.5%	3,049.5	56.0%	245.3	7.4%
2021	5,498.3	3,316.9	60.3%	3,168.6	57.6%	148.3	4.5%
2022	5,578.0	3,361.7	60.3%	3,248.3	58.2%	113.4	3.4%
2023	5,661.6	3,380.1	59.7%	3,270.6	57.8%	109.5	3.2%
2024	5,739.4	3,420.4	59.6%	3,303.0	57.5%	117.4	3.4%
2025							
January	5,777.8	3,430.5	59.4%	3,300.3	57.1%	130.2	3.8%
February	5,782.4	3,436.7	59.4%	3,317.6	57.4%	119.1	3.5%
March	5,787.5	3,464.9	59.9%	3,351.6	57.9%	113.3	3.3%
April (r)	5,792.5	3,493.5	60.3%	3,393.5	58.6%	100.0	2.9%
May (p)	5,797.9	3,486.5	60.1%	3,372.7	58.2%	113.8	3.3%
June							
July							
August							
September							
October							
November							
December							

(r)=revised
(p)=preliminary

County	May.	May.	County	May.	May.
	2024	2025		2024	2025
Anderson	2.9	3.2	Lauderdale	4.3	4.7
Bedford	2.6	3.1	Lawrence	3.1	3.7
Benton	3.8	4.3	Lewis	3.0	3.5
Bledsoe	2.9	2.9	Lincoln	2.8	3.4
Blount	2.6	2.9	Loudon	2.9	3.1
Bradley	3.2	3.5	Macon	2.5	2.9
Campbell	3.1	3.5	Madison	3.4	3.8
Cannon	2.7	2.9	Marion	3.4	3.9
Carroll	3.5	3.9	Marshall	3.0	3.2
Carter	3.4	3.7	Maury	2.5	2.8
Cheatham	2.5	2.7	McMinn	3.7	4.2
Chester	3.5	4.0	McNairy	3.6	4.1
Claiborne	3.4	3.8	Meigs	4.4	4.6
Clay	4.1	4.3	Monroe	3.3	3.6
Cocke	3.7	4.2	Montgomery	3.2	3.5
Coffee	3.0	3.4	Moore	3.0	3.1
Crockett	3.0	3.4	Morgan	3.5	3.8
Cumberland	3.9	4.1	Obion	3.1	3.3
Davidson	2.5	2.8	Overton	2.9	3.2
Decatur	3.7	3.9	Perry	4.5	4.8
DeKalb	3.5	3.7	Pickett	4.5	4.6
Dickson	2.4	2.8	Polk	3.3	3.6
Dyer	2.9	3.3	Putnam	3.0	3.4
Fayette	3.1	3.4	Rhea	3.9	3.9
Fentress	3.3	3.4	Roane	3.4	3.4
Franklin	3.4	3.6	Robertson	2.6	2.8
Gibson	3.3	3.6	Rutherford	2.4	2.7
Giles	3.2	4.0	Scott	3.9	3.8
Grainger	3.1	3.5	Sequatchie	3.3	3.9
Greene	3.9	4.2	Sevier	2.4	2.7
Grundy	3.8	4.1	Shelby	3.8	4.2
Hamblen	3.1	3.4	Smith	2.6	3.0
Hamilton	2.7	3.1	Stewart	3.5	3.5
Hancock	3.9	4.2	Sullivan	3.2	3.4
Hardeman	3.9	5.0	Sumner	2.5	2.8
Hardin	3.5	3.8	Tipton	3.3	3.6
Hawkins	3.6	3.8	Trousdale	2.3	2.9
Haywood	2.4	3.3	Unicoi	3.2	4.2
Henderson	3.4	3.8	Union	3.0	3.4
Henry	3.5	3.9	Van Buren	3.2	3.2
Hickman	2.7	3.0	Warren	3.3	3.6
Houston	3.7	4.0	Washington	2.9	3.2
Humphreys	3.2	3.4	Wayne	3.2	3.4
Jackson	3.4	3.7	Weakley	3.6	3.8
Jefferson	3.0	3.4	White	3.6	4.1
Johnson	3.9	4.9	Williamson	2.4	2.6
Knox	2.6	2.8	Wilson	2.4	2.7
Lake	3.5	4.7			

*Data Not Seasonally Adjusted



Statewide

Estimated Nonfarm Employment (in thousands)

Industry	May 2024	Revised Apr. 2025	Preliminary May 2025	Net Change	
				Apr. 2025 May 2025	May 2024 May 2025
Total Nonfarm	3379.4	3,399.4	3,398.6	-0.8	19.2
Total Private	2925.5	2,929.7	2,935.7	6.0	10.2
Goods Producing	534.1	528.4	526.9	-1.5	-7.2
Mining, Logging & Construction	169.0	165.7	165.3	-0.4	-3.7
Mining & Logging	4.3	4.5	4.5	0.0	0.2
Construction	164.7	161.2	160.8	-0.4	-3.9
Construction of Buildings	34.8	35.1	34.8	-0.3	0.0
Heavy and Civil Engineering	23.3	23.6	23.1	-0.5	-0.2
Specialty Trade Contractors	106.6	102.5	102.9	0.4	-3.7
Manufacturing	365.1	362.7	361.6	-1.1	-3.5
Durable Goods Manufacturing	235.3	235.4	235.6	0.2	0.3
Wood Product Manufacturing	13.5	13.3	13.3	0.0	-0.2
Nonmetallic Mineral Product Manufacturing	15.2	15.3	15.3	0.0	0.1
Primary Metal Manufacturing	11.1	11.2	11.3	0.1	0.2
Fabricated Metal Product Manufacturing	42.1	42.9	43.0	0.1	0.9
Machinery Manufacturing	24.6	25.1	25.1	0.0	0.5
Computer & Electronic Product Manufacturing	7.5	7.8	7.8	0.0	0.3
Electrical Equipment & Appliance Manufacturing	21.7	22.2	22.2	0.0	0.5
Transportation Equipment Manufacturing	75.5	73.4	73.4	0.0	-2.1
Furniture & Related Product Manufacturing	9.0	9.1	9.1	0.0	0.1
Miscellaneous Manufacturing	15.1	15.1	15.1	0.0	0.0
Nondurable Goods Manufacturing	129.8	127.3	126.0	-1.3	-3.8
Food Manufacturing	40.9	40.6	40.1	-0.5	-0.8
Beverage & Tobacco Product Manufacturing	7.1	6.8	6.7	-0.1	-0.4
Paper Manufacturing	12.8	12.4	12.2	-0.2	-0.6
Printing & Related Support Activities	7.9	7.7	7.6	-0.1	-0.3
Chemical Manufacturing	27.1	26.6	26.3	-0.3	-0.8
Plastics & Rubber Products Manufacturing	24.9	23.5	23.4	-0.1	-1.5
Service Providing	2845.3	2,871.0	2,871.7	0.7	26.4
Trade, Transportation, & Utilities	692.5	696.9	697.2	0.3	4.7
Wholesale Trade	136.9	139.2	138.7	-0.5	1.8
Merchant Wholesalers, Durable Goods	81.0	81.9	81.9	0.0	0.9
Merchant Wholesalers, Nondurable Goods	49.0	50.4	49.9	-0.5	0.9
Wholesale Trade Agents & Brokers	6.9	6.9	6.9	0.0	0.0
Retail Trade	345.1	348.6	348.4	-0.2	3.3
Motor Vehicle & Parts Dealers	48.7	48.8	49.4	0.6	0.7
Building Material, Garden Equipment, & Supplies	35.5	36.0	35.8	-0.2	0.3
Food & Beverage Retailers	60.3	61.1	61.1	0.0	0.8
Furniture, Home Furnishings, Electronics, & Appliance	18.1	18.1	18.1	0.0	0.0
General Merchandise Retailers	77.9	79.3	79.3	0.0	1.4
Health & Personal Care Retailers	24.0	23.3	23.3	0.0	-0.7
Gasoline Stations & Fuel Dealers	26.2	26.2	26.4	0.2	0.2
Clothing, Clothing Accessories, Shoe & Jewelry Retail	22.3	22.6	22.7	0.1	0.4
Sporting Goods, Hobby, Music, & Book Retailers	32.1	33.2	32.3	-0.9	0.2
Transportation, Warehousing, & Utilities	210.5	209.1	210.1	1.0	-0.4
Utilities	4.4	4.5	4.5	0.0	0.1
Transportation & Warehousing	206.1	204.6	205.6	1.0	-0.5
Truck Transportation	56.7	56.6	56.0	-0.6	-0.7
Information	54.4	53.9	54.2	0.3	-0.2
Financial Activities	192.5	191.0	190.3	-0.7	-2.2
Finance & Insurance	147.3	146.7	146.6	-0.1	-0.7
Real Estate, Rental, & Leasing	45.2	44.3	43.7	-0.6	-1.5
Professional & Business Services	454.9	455.0	453.1	-1.9	-1.8
Professional, Scientific, & Technical Services	176.7	185.1	182.9	-2.2	6.2
Management of Companies & Enterprises	57.9	58.3	57.9	-0.4	0.0
Administrative, Support, & Waste Management	220.3	211.6	212.3	0.7	-8.0
Private Educational & Health Services	488.8	494.7	494.5	-0.2	5.7
Private Educational Services	66.1	71.3	68.5	-2.8	2.4
Health Care & Social Assistance	422.7	423.4	426.0	2.6	3.3
Ambulatory Health Care Services	176.1	173.9	175.0	1.1	-1.1
Hospitals	125.9	126.5	126.9	0.4	1.0
Nursing & Residential Care Facilities	61.6	64.1	64.5	0.4	2.9
Social Assistance	59.1	58.9	59.6	0.7	0.5
Leisure & Hospitality	376.2	375.0	384.1	9.1	7.9
Arts, Entertainment, & Recreation	53.4	53.8	56.5	2.7	3.1
Accommodation & Food Services	322.8	321.2	327.6	6.4	4.8
Accommodation	38.3	36.9	37.0	0.1	-1.3
Food Services & Drinking Places	284.5	284.3	290.6	6.3	6.1
Other Services	132.1	134.8	135.4	0.6	3.3
Government	453.9	469.7	462.9	-6.8	9.0
Federal Government	57.7	59.0	58.5	-0.5	0.8
State Government	97.3	107.2	100.3	-6.9	3.0
State Government Educational Services	54.7	64.0	56.7	-7.3	2.0
State Government Excluding Educational Services	42.6	43.2	43.6	0.4	1.0
Local Government	298.9	303.5	304.1	0.6	5.2
Local Government Educational Services	152.7	154.0	153.5	-0.5	0.8
Local Government Excluding Educational Services	146.2	149.5	150.6	1.1	4.4

Nonfarm Employment Summary

Monthly Employment Changes

Total Nonfarm	-800
State Government Educational Services	-7,300
Private Educational Services	-2,800
Professional, Scientific & Tech Svcs.	-2,200
Nondurable Goods Manufacturing	-1,300
Sport Goods/Hobby/Music/Book Retail	-900
Truck Transportation	-600
Real Estate, rental & Leasing	-600
Heavy & Civil Engineering Construction	-500
Merchant Wholesalers, Nondurables	-500
Federal Government	-500
Local Government Educational Services	-500
Leisure & Hospitality	+9,100
Health Care & Social Assistance	+2,600
Transportation & Warehousing	+1,000

Annual Changes

Total Nonfarm	+19,200
Government	+9,000
Local Government	+5,200
State Government	+3,000
Leisure & Hospitality	+7,900
Professional, Scientific & Tech Services	+6,200
Private Educational & Health Services	+5,700
Trade, Transportation & Utilities	+4,700
Admin, Support & Waste Mgmt. Svcs.	-8,000
Nondurable Goods Manufacturing	-3,800

Monthly Unemployment Rates Counties

Increased	92
Decreased	3
Unchanged	0
Highest/Lowest Rate	Rate
Williamson County	2.6%
Hardeman County	5.0%

The data from all the nonfarm employment estimates tables include all full- and part-time nonfarm wage and salary employees who worked during or received pay for any part of the pay period that includes the 12th of the month. This is a count of jobs by place of work. Agricultural workers, proprietors, self-employed persons, workers in private households, and unpaid family workers are excluded. These numbers may not add due to rounding. Data are based on the 2024 benchmark.

Civilian Labor Force

	May 2024				April 2025				May 2025			
	Labor Force	Employed	Unemployed	Rate	Labor Force	Employed	Unemployed	Rate	Labor Force	Employed	Unemployed	Rate
Seasonally Adjusted												
UNITED STATES	167,799,000	161,164,000	6,635,000	4.0	171,135,000	163,969,000	7,166,000	4.2	170,510,000	163,273,000	7,237,000	4.2
TENNESSEE	3,415,537	3,305,111	110,426	3.2	3,458,695	3,336,497	122,198	3.5	3,467,385	3,346,603	120,782	3.5
Not Seasonally Adjusted												
UNITED STATES	167,576,000	161,341,000	6,235,000	3.7	170,650,000	164,069,000	6,582,000	3.9	170,216,000	163,401,000	6,815,000	4.0
TENNESSEE	3,411,919	3,311,297	100,622	2.9	3,493,488	3,393,492	99,996	2.9	3,486,543	3,372,696	113,847	3.3
Metropolitan Statistical Areas												
Chattanooga	291,448	283,211	8,237	2.8	295,696	287,644	8,052	2.7	294,788	285,596	9,192	3.1
Clarksville	138,298	133,202	5,096	3.7	142,697	137,870	4,827	3.4	143,003	137,572	5,431	3.8
Cleveland	55,960	54,173	1,787	3.2	57,136	55,378	1,758	3.1	56,953	54,945	2,008	3.5
Jackson	78,001	75,401	2,600	3.3	79,831	77,306	2,525	3.2	79,814	76,863	2,951	3.7
Johnson City	96,796	93,833	2,963	3.1	99,586	96,555	3,031	3.0	98,588	95,246	3,342	3.4
Kingsport-Bristol	132,599	128,290	4,309	3.2	135,334	130,936	4,398	3.2	134,859	129,982	4,877	3.6
Knoxville	452,076	439,652	12,424	2.7	463,707	451,863	11,844	2.6	462,165	448,348	13,817	3.0
Memphis	622,656	600,668	21,988	3.5	633,627	610,178	23,449	3.7	630,853	605,256	25,597	4.1
Morristown	53,602	51,979	1,623	3.0	55,050	53,433	1,617	2.9	54,949	53,097	1,852	3.4
Nashville-Murfreesboro	1,158,636	1,130,038	28,598	2.5	1,188,797	1,160,099	28,698	2.4	1,186,469	1,153,882	32,587	2.7
Microropolitan Statistical Areas												
Athens	24,984	24,025	959	3.8	25,246	24,320	926	3.7	25,262	24,179	1,083	4.3
Cookeville	63,542	61,568	1,974	3.1	65,158	63,225	1,933	3.0	64,664	62,417	2,247	3.5
Crossville	22,963	22,077	886	3.9	23,598	22,738	860	3.6	23,642	22,674	968	4.1
Dyersburg	17,939	17,412	527	2.9	18,539	17,996	543	2.9	18,564	17,950	614	3.3
Fayetteville	16,489	16,024	465	2.8	16,863	16,370	493	2.9	16,915	16,347	568	3.4
Greeneville	28,236	27,138	1,098	3.9	28,835	27,755	1,080	3.7	28,713	27,502	1,211	4.2
Lawrenceburg	18,791	18,202	589	3.1	19,386	18,763	623	3.2	19,324	18,612	712	3.7
Lewisburg	16,274	15,787	487	3.0	16,775	16,289	486	2.9	16,709	16,166	543	3.2
Martin	13,755	13,254	501	3.6	14,128	13,690	438	3.1	14,011	13,480	531	3.8
McMinnville	17,205	16,636	569	3.3	17,224	16,670	554	3.2	17,206	16,591	615	3.6
Newport	15,010	14,459	551	3.7	15,272	14,607	665	4.4	15,351	14,708	643	4.2
Paris	12,514	12,074	440	3.5	12,932	12,495	437	3.4	13,099	12,590	509	3.9
Sevierville	52,812	51,530	1,282	2.4	54,115	52,808	1,307	2.4	54,647	53,191	1,456	2.7
Shelbyville	25,722	25,043	679	2.6	26,269	25,583	686	2.6	26,241	25,424	817	3.1
Tullahoma-Manchester	29,416	28,543	873	3.0	29,794	28,921	873	2.9	29,833	28,813	1,020	3.4
Union City	13,512	13,096	416	3.1	13,819	13,406	413	3.0	13,808	13,349	459	3.3
Winchester	18,340	17,724	616	3.4	18,623	18,056	567	3.0	18,608	17,933	675	3.6
Cities												
Bartlett	27,323	26,499	824	3.0	27,798	26,977	821	3.0	27,649	26,776	873	3.2
Brentwood	22,401	21,835	566	2.5	22,935	22,411	524	2.3	22,878	22,265	613	2.7
Bristol	12,349	11,950	399	3.2	12,698	12,321	377	3.0	12,663	12,233	430	3.4
Chattanooga	96,549	93,784	2,765	2.9	98,570	95,700	2,870	2.9	98,308	95,013	3,295	3.4
Clarksville	75,586	73,123	2,463	3.3	78,388	75,884	2,504	3.2	78,492	75,662	2,830	3.6
Cleveland	21,063	20,363	700	3.3	21,522	20,815	707	3.3	21,458	20,651	807	3.8
Collierville	24,773	24,106	667	2.7	25,211	24,541	670	2.7	25,091	24,357	734	2.9
Columbia	24,078	23,431	647	2.7	24,775	24,053	722	2.9	24,684	23,934	750	3.0
Cookeville	16,316	15,817	499	3.1	16,687	16,207	480	2.9	16,531	15,953	578	3.5
Farragut	12,849	12,528	321	2.5	13,177	12,872	305	2.3	13,131	12,772	359	2.7
Franklin	48,998	47,841	1,157	2.4	50,170	49,103	1,067	2.1	50,047	48,783	1,264	2.5
Gallatin	26,339	25,633	706	2.7	27,075	26,318	757	2.8	27,010	26,182	828	3.1
Germantown	18,199	17,732	467	2.6	18,542	18,052	490	2.6	18,445	17,917	528	2.9
Hendersonville	35,551	34,671	880	2.5	36,447	35,597	850	2.3	36,391	35,414	977	2.7
Jackson	29,225	28,180	1,045	3.6	29,907	28,874	1,033	3.5	29,928	28,716	1,212	4.0
Johnson City	35,894	34,847	1,047	2.9	36,823	35,860	963	2.6	36,542	35,375	1,167	3.2
Kingsport	23,589	22,826	763	3.2	24,320	23,534	786	3.2	24,255	23,366	889	3.7
Knoxville	101,158	98,325	2,833	2.8	103,697	101,025	2,672	2.6	103,416	100,243	3,173	3.1
LaVergne	22,011	21,475	536	2.4	22,578	22,050	528	2.3	22,556	21,946	610	2.7
Lebanon	24,917	24,273	644	2.6	25,591	24,916	675	2.6	25,536	24,804	732	2.9
Maryville	15,718	15,317	401	2.6	16,117	15,745	372	2.3	16,087	15,625	462	2.9
Memphis	281,913	270,229	11,684	4.1	286,890	275,105	11,785	4.1	286,261	273,046	13,215	4.6
Morristown	12,644	12,247	397	3.1	12,991	12,586	405	3.1	12,963	12,508	455	3.5
Mt. Juliet	23,402	22,844	558	2.4	24,008	23,448	560	2.3	23,998	23,343	655	2.7
Murfreesboro	95,855	93,468	2,387	2.5	98,372	95,969	2,403	2.4	98,259	95,519	2,740	2.8
Nashville	416,277	405,892	10,385	2.5	427,153	416,562	10,591	2.5	426,024	414,217	11,807	2.8
Oak Ridge	14,588	14,169	419	2.9	14,963	14,557	406	2.7	14,898	14,439	459	3.1
Shelbyville	12,650	12,330	320	2.5	12,920	12,596	324	2.5	12,937	12,518	419	3.2
Smyrna	32,172	31,383	789	2.5	33,007	32,223	784	2.4	32,966	32,072	894	2.7
Spring Hill	32,032	31,325	707	2.2	32,898	32,154	744	2.3	32,789	31,961	828	2.5

Chattanooga MSA

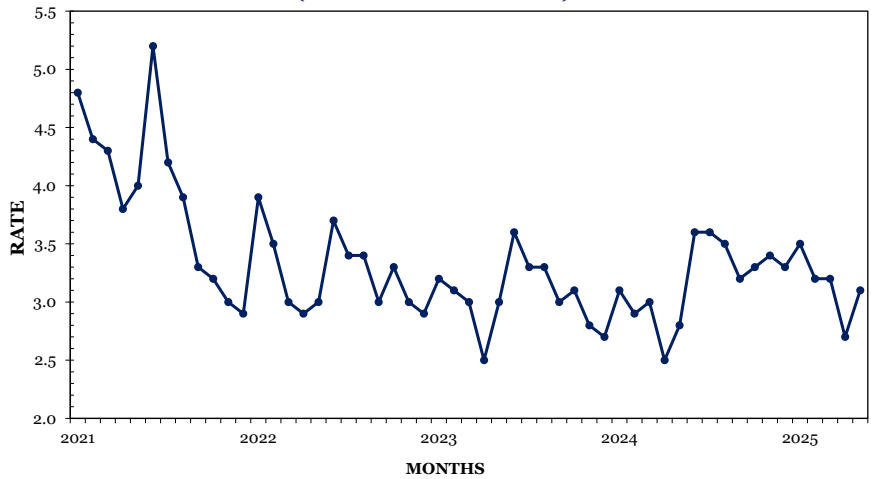
Monthly Employment Changes

Total Nonfarm	+500
Leisure & Hospitality	+900
Trade, Transportation & Utilities	+200
Durable Goods Manufacturing	+100
Other Services	+100
Professional & Business Services	-500
Nondurable Goods Manufacturing	-100
Financial Activities	-100

Annual Employment Changes

Total Nonfarm	+700
Goods-Producing	-600
Service-Providing	+1,300

CHATTANOOGA MSA UNEMPLOYMENT RATES (NOT SEASONALLY ADJUSTED)



Estimated Nonfarm Employment (in thousands)

Industry	May 2024	Revised	Preliminary	Net Change	
		Apr. 2025	May 2025	Apr. 2025 May 2025	May 2024 May 2025
Total Nonfarm	296.5	296.7	297.2	0.5	0.7
Total Private	263.5	263.3	263.9	0.6	0.4
Goods-Producing	55.6	55.0	55.0	0.0	-0.6
Mining, Logging, & Construction	14.2	14.5	14.5	0.0	0.3
Manufacturing	41.4	40.5	40.5	0.0	-0.9
Durable Goods Manufacturing	26.9	26.3	26.4	0.1	-0.5
Nondurable Goods Manufacturing	14.5	14.2	14.1	-0.1	-0.4
Service-Providing	240.9	241.7	242.2	0.5	1.3
Trade, Transportation, & Utilities	54.6	54.8	55.0	0.2	0.4
Wholesale Trade	8.8	9.1	9.1	0.0	0.3
Retail Trade	28.8	29.2	29.3	0.1	0.5
Transportation, Warehousing, & Utilities	17.0	16.5	16.6	0.1	-0.4
Information	3.4	3.3	3.3	0.0	-0.1
Financial Activities	28.7	28.6	28.5	-0.1	-0.2
Professional & Business Services	31.3	31.3	30.8	-0.5	-0.5
Private Education & Health Services	44.5	45.6	45.6	0.0	1.1
Leisure & Hospitality	32.4	31.2	32.1	0.9	-0.3
Other Services	13.0	13.5	13.6	0.1	0.6
Government	33.0	33.4	33.3	-0.1	0.3
Federal Government	6.2	6.2	6.1	-0.1	-0.1
State Government	6.3	7.3	7.3	0.0	1.0
Local Government	20.5	19.9	19.9	0.0	-0.6

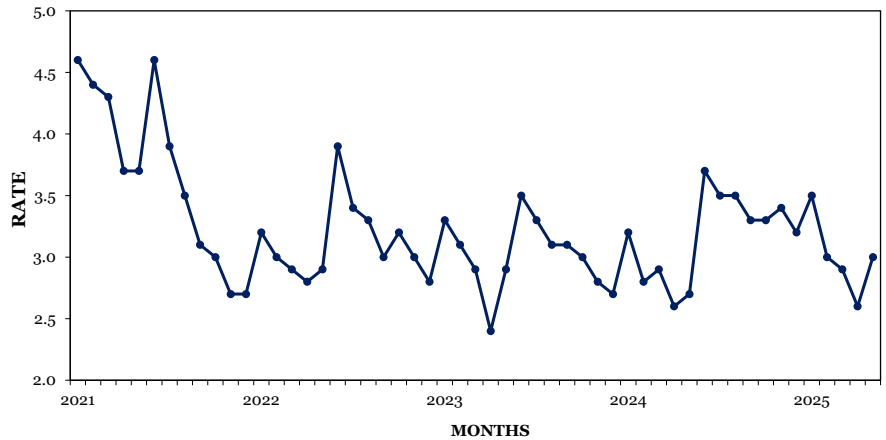
Chattanooga MSA: Hamilton County, Marion County, Sequatchie County, Catoosa County, GA, Dade County, GA, & Walker County, GA

Knoxville MSA

Monthly Employment Changes

Total Nonfarm	+100
Leisure & Hospitality	+1,000
Private Education & Health Services	+500
Transportation, Warehousing & Utilities	+200
Other Services	+200
Local Government	+200
State Government	-1,400
Professional & Business Services	-200
Annual Employment Changes	
Total Nonfarm	+4,300
Goods-Producing	-300
Service-Providing	+4,600

KNOXVILLE MSA UNEMPLOYMENT RATES (NOT SEASONALLY ADJUSTED)



Estimated Nonfarm Employment (in thousands)

Industry	May	Revised	Preliminary	Net Change	
	2024	Apr. 2025	May 2025	Apr. 2025	May 2024
Total Nonfarm	451.3	455.5	455.6	0.1	4.3
Total Private	388.8	392.1	393.5	1.4	4.7
Goods-Producing	67.8	67.5	67.5	0.0	-0.3
Mining, Logging, & Construction	22.2	22.2	22.2	0.0	0.0
Manufacturing	45.6	45.3	45.3	0.0	-0.3
Durable Goods Manufacturing	34.5	34.6	34.7	0.1	0.2
Nondurable Goods Manufacturing	11.1	10.7	10.6	-0.1	-0.5
Service-Providing	383.5	388.0	388.1	0.1	4.6
Trade, Transportation, & Utilities	89.2	90.8	90.8	0.0	1.6
Wholesale Trade	19.6	20.4	20.3	-0.1	0.7
Retail Trade	51.4	51.7	51.6	-0.1	0.2
Transportation, Warehousing, & Utilities	18.2	18.7	18.9	0.2	0.7
Information	6.3	6.1	6.1	0.0	-0.2
Financial Activities	23.9	23.8	23.7	-0.1	-0.2
Professional & Business Services	72.1	72.7	72.5	-0.2	0.4
Private Education & Health Services	62.4	64.7	65.2	0.5	2.8
Leisure & Hospitality	49.8	48.8	49.8	1.0	0.0
Other Services	17.3	17.7	17.9	0.2	0.6
Government	62.5	63.4	62.1	-1.3	-0.4
Federal Government	5.7	5.8	5.7	-0.1	0.0
State Government	20.0	21.1	19.7	-1.4	-0.3
Local Government	36.8	36.5	36.7	0.2	-0.1

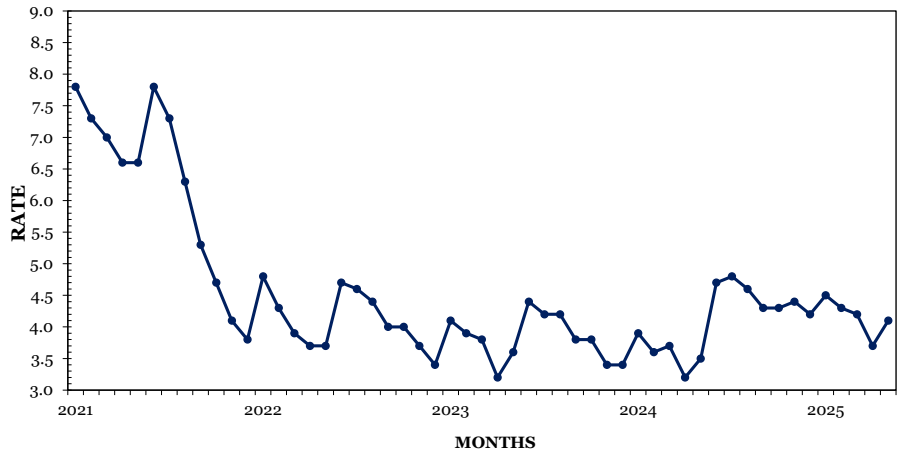
Knoxville MSA: Anderson County, Blount County, Campbell County, Grainger County, Knox County, Loudon County, Morgan County, Roane County, Union County

Memphis MSA

Monthly Employment Changes

Total Nonfarm	+500
Leisure & Hospitality	+1,700
Transportation, Warehousing & Utilities	+1,100
Admin, Support & Waste Mgmt Svcs	+400
Mining, Logging & Construction	+200
State Government	-1,800
Professional, Scientific & Technical Svcs.	-800
Nondurable Goods Manufacturing	-200
Annual Employment Changes	
Total Nonfarm	+100
Goods-Producing	-1,900
Service-Providing	+2,000

MEMPHIS MSA UNEMPLOYMENT RATES (NOT SEASONALLY ADJUSTED)



Estimated Nonfarm Employment (in thousands)

Industry	May 2024	Revised Apr. 2025	Preliminary May 2025	Net Change Apr. 2025 - May 2025	Net Change May 2024 - May 2025
Total Nonfarm	659.5	659.1	659.6	0.5	0.1
Total Private	574.6	571.0	573.3	2.3	-1.3
Goods-Producing	66.2	64.2	64.3	0.1	-1.9
Mining, Logging, & Construction	25.3	24.3	24.5	0.2	-0.8
Manufacturing	40.9	39.9	39.8	-0.1	-1.1
Durable Goods Manufacturing	23.6	23.5	23.6	0.1	0.0
Nondurable Goods Manufacturing	17.3	16.4	16.2	-0.2	-1.1
Service-Providing	593.3	594.9	595.3	0.4	2.0
Trade, Transportation, & Utilities	192.5	190.0	191.1	1.1	-1.4
Wholesale Trade	38.4	39.9	39.9	0.0	1.5
Retail Trade	61.5	61.3	61.3	0.0	-0.2
Transportation, Warehousing, & Utilities	92.6	88.8	89.9	1.1	-2.7
Information	5.3	5.2	5.2	0.0	-0.1
Financial Activities	29.7	29.9	29.7	-0.2	0.0
Professional & Business Services	88.8	89.6	89.2	-0.4	0.4
Professional, Scientific, & Technical Services	27.6	29.6	28.8	-0.8	1.2
Management of Companies & Enterprises	9.6	9.7	9.7	0.0	0.1
Administrative, Support, & Waste Management	51.6	50.3	50.7	0.4	-0.9
Private Education & Health Services	100.1	101.1	101.0	-0.1	0.9
Leisure & Hospitality	63.9	62.6	64.3	1.7	0.4
Other Services	28.1	28.4	28.5	0.1	0.4
Government	84.9	88.1	86.3	-1.8	1.4
Federal Government	16.3	16.4	16.3	-0.1	0.0
State Government	14.3	16.1	14.3	-1.8	0.0
Local Government	54.3	55.6	55.7	0.1	1.4

Memphis MSA: Fayette County, Shelby County, Tipton County, Benton County, MS, DeSoto County, MS, Marshall County, MS, Tate County, MS, Tunica County, MS, Crittenden County, AR

Nashville MSA

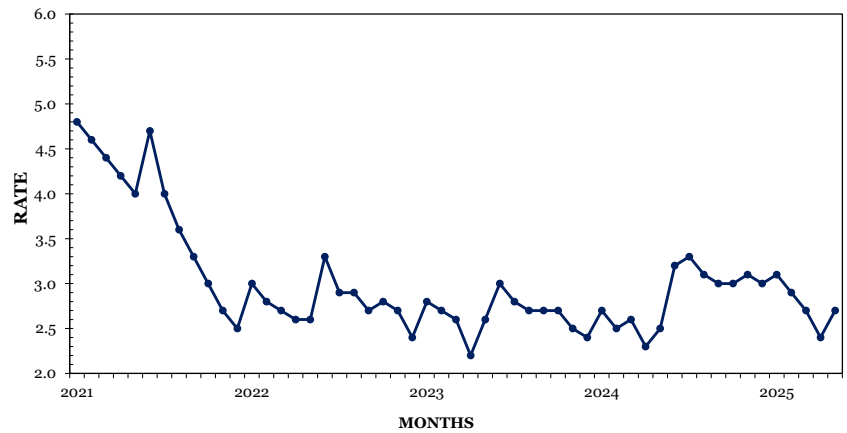
Monthly Employment Changes

Total Nonfarm	+3,900
Leisure & Hospitality	+4,200
Health Care & Social Assistance	+1,800
Durable Goods Manufacturing	+500
Local Government	+400
Private Educational Services	-1,200
Professional & Business Services	-1,000
Trade, Transportation & Utilities	-300

Annual Employment Changes

Total Nonfarm	+13,700
Goods-Producing	-2,200
Service-Providing	+15,900

NASHVILLE MSA UNEMPLOYMENT RATES (NOT SEASONALLY ADJUSTED)



Estimated Nonfarm Employment (in thousands)

Industry	May 2024	Revised Apr. 2025	Preliminary May 2025	Net Change Apr. 2025 May 2025	Net Change May 2024 May 2025
Total Nonfarm	1,185.9	1,195.7	1,199.6	3.9	13.7
Total Private	1,055.6	1,060.0	1,063.4	3.4	7.8
Goods-Producing	154.1	151.7	151.9	0.2	-2.2
Mining, Logging, & Construction	65.1	63.5	63.5	0.0	-1.6
Manufacturing	89.0	88.2	88.4	0.2	-0.6
Durable Goods Manufacturing	63.6	63.7	64.2	0.5	0.6
Nondurable Goods Manufacturing	25.4	24.5	24.2	-0.3	-1.2
Service-Providing	1,031.8	1,044.0	1,047.7	3.7	15.9
Trade, Transportation, & Utilities	228.9	232.7	232.4	-0.3	3.5
Wholesale Trade	50.4	51.1	51.0	-0.1	0.6
Retail Trade	106.8	108.1	108.0	-0.1	1.2
Transportation, Warehousing, & Utilities	71.7	73.5	73.4	-0.1	1.7
Information	31.6	31.2	31.4	0.2	-0.2
Financial Activities	81.2	80.2	80.0	-0.2	-1.2
Professional & Business Services	196.0	194.4	192.8	-1.6	-3.2
Professional, Scientific, & Technical Services	83.5	86.4	85.9	-0.5	2.4
Management of Companies & Enterprises	30.6	30.5	30.4	-0.1	-0.2
Administrative, Support, & Waste Management	81.9	77.5	76.5	-1.0	-5.4
Private Education & Health Services	176.4	180.7	181.3	0.6	4.9
Private Educational Services	30.2	33.9	32.7	-1.2	2.5
Health Care & Social Assistance	146.2	146.8	148.6	1.8	2.4
Leisure & Hospitality	137.4	137.9	142.1	4.2	4.7
Other Services	50.0	51.2	51.5	0.3	1.5
Government	130.3	135.7	136.2	0.5	5.9
Federal Government	16.6	16.8	16.8	0.0	0.2
State Government	30.6	32.6	32.7	0.1	2.1
Local Government	83.1	86.3	86.7	0.4	3.6

Nashville MSA: Cannon County, Cheatham County, Davidson County, Dickson County, Hickman County, Macon County, Maury County, Robertson County, Rutherford County, Smith County, Sumner County, Trousdale County, Williamson County, Wilson County



Nonfarm Employment (Smaller MSAs)

	Clarksville, TN-KY MSA		Cleveland, TN MSA		Jackson, TN MSA	
	Apr. 2025 Revised	May 2025 Prelim.	Apr. 2025 Revised	May 2025 Prelim.	Apr. 2025 Revised	May 2025 Prelim.
Total Nonfarm	108,900	109,500	47,100	47,000	89,100	89,500
Total Private	86,400	87,000	41,400	41,300	71,800	72,100
Goods Producing	18,900	18,900	10,100	10,000	19,300	19,300
Mining, Logging & Construction	4,900	4,900	2,200	2,200	4,300	4,300
Manufacturing	14,000	14,000	7,900	7,800	15,000	15,000
Service Providing	90,000	90,600	37,000	37,000	69,800	70,200
Trade, Transportation, & Utilities	21,400	21,600	10,100	10,100	17,000	17,000
Wholesale Trade	2,600	2,600	1,300	1,300	3,500	3,500
Retail Trade	14,200	14,300	5,700	5,700	10,000	10,000
Transportation, Warehousing, & Utilities	4,600	4,700	3,100	3,100	3,500	3,500
Information	1,400	1,400	400	400	700	700
Financial Activities	4,100	4,100	1,500	1,500	3,300	3,300
Professional & Business Services	9,300	9,200	4,100	4,100	7,200	7,200
Private Educational & Health Services	14,400	14,500	7,300	7,200	13,500	13,600
Leisure & Hospitality	13,200	13,600	5,300	5,400	8,000	8,200
Other Services	3,700	3,700	2,600	2,600	2,800	2,800
Government	22,500	22,500	5,700	5,700	17,300	17,400
Federal Government	5,700	5,600	400	300	700	700
State Government	3,500	3,400	700	700	1,900	1,900
Local Government	13,300	13,500	4,600	4,700	14,700	14,800

	Johnson City, TN MSA		Kingsport-Bristol, TN-VA MSA		Morristown, TN MSA	
	Apr. 2025 Revised	May 2025 Prelim.	Apr. 2025 Revised	May 2025 Prelim.	Apr. 2025 Revised	May 2025 Prelim.
Total Nonfarm	88,300	87,500	126,800	127,100	51,400	51,600
Total Private	69,900	69,800	110,000	110,300	44,200	44,300
Goods Producing	11,700	11,700	27,700	27,700	14,900	14,900
Mining, Logging & Construction	3,200	3,200	6,900	6,900	2,500	2,500
Manufacturing	8,500	8,500	20,800	20,800	12,400	12,400
Service Providing	76,600	75,800	99,100	99,400	36,500	36,700
Trade, Transportation, & Utilities	14,900	14,800	24,200	24,200	10,100	10,100
Wholesale Trade	3,100	3,100	3,500	3,500	1,400	1,400
Retail Trade	10,700	10,600	15,800	15,800	6,100	6,100
Transportation, Warehousing, & Utilities	1,100	1,100	4,900	4,900	2,600	2,600
Information	800	800	1,300	1,300	300	300
Financial Activities	3,700	3,600	4,300	4,300	1,100	1,100
Professional & Business Services	9,900	9,800	13,600	13,500	5,100	5,100
Private Educational & Health Services	15,600	15,600	18,800	18,800	6,600	6,600
Leisure & Hospitality	10,400	10,600	14,100	14,400	4,600	4,700
Other Services	2,900	2,900	6,000	6,100	1,500	1,500
Government	18,400	17,700	16,800	16,800	7,200	7,300
Federal Government	3,400	3,300	900	900	300	300
State Government	6,600	6,000	2,600	2,500	1,400	1,500
Local Government	8,400	8,400	13,300	13,400	5,500	5,500

Clarksville MSA is Montgomery County, Stewart County, Christian County, KY, & Trigg County, KY. **Cleveland MSA** is Bradley & Polk counties. **Jackson MSA** is Chester, Crockett, Gibson & Madison counties. **Johnson City MSA** is Carter, Unicoi, & Washington counties. **Kingsport-Bristol MSA** is Hawkins County, Sullivan County, Scott County, VA, Washington County, VA, & Bristol City, VA. **Morristown MSA** is Hamblen & Jefferson counties.

U.S. Consumer Price Index — May 2025

Group	All Urban Consumers			Urban Wage Earners & Clerical Workers		
	Index	Percent Change		Index	Percent Change	
		Monthly	Yearly		Monthly	Yearly
U.S. City Average						
All Items (1982-84=100)	321.465	0.2	2.4	314.839	0.2	2.2
Food and beverages	335.687	0.2	2.8	335.089	0.2	2.7
Housing	345.938	0.3	4.0	341.783	0.3	3.9
Apparel	131.223	-1.0	-0.9	131.426	-0.8	-0.8
Transportation	272.946	0.2	-1.3	277.566	0.1	-1.5
Medical care	578.250	0.2	2.5	586.321	0.3	2.5
South						
All Items (1982-84=100)	311.514	0.1	2.0	305.659	0.1	1.7
Food and beverages	329.978	0.2	2.7	328.902	0.2	2.5
Housing	323.191	0.2	4.0	324.010	0.2	3.8
Apparel	141.106	-1.0	-1.8	140.242	-0.7	-2.0
Transportation	271.654	0.0	-2.1	270.761	-0.1	-2.1
Medical care	544.384	0.2	2.3	559.812	0.3	2.0

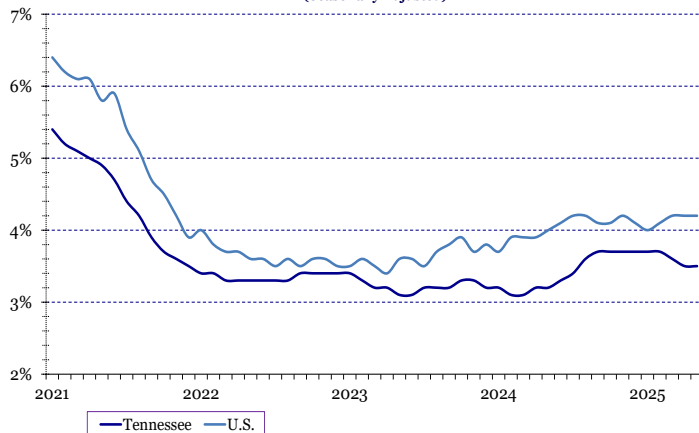
Hours and Earnings Of Production Workers

	Average Weekly Earnings			Average Hourly Earnings			Average Weekly Hours		
	May	Apr.	May	May	Apr.	May	May	Apr.	May
	2024	2025	2025	2024	2025	2025	2024	2025	2025
Manufacturing	\$981.78	\$1,006.43	\$1,024.59	\$24.73	\$24.85	\$24.99	39.7	40.5	41.0
Durable Goods Manufacturing	\$1,033.79	\$1,066.97	\$1,071.03	\$26.04	\$26.28	\$26.38	39.7	40.6	40.6
Non-Durable Goods Manufacturing	\$886.64	\$895.06	\$937.00	\$22.39	\$22.21	\$22.47	39.6	40.3	41.7

All Employee Hours and Earnings

	Average Weekly Earnings			Average Hourly Earnings			Average Weekly Hours		
	May	Apr.	May	May	Apr.	May	May	Apr.	May
	2024	2025	2025	2024	2025	2025	2024	2025	2025
Total Private	\$1,024.65	\$1,059.84	\$1,059.86	\$29.70	\$30.72	\$30.81	34.5	34.5	34.4
Goods-Producing	\$1,211.70	\$1,262.54	\$1,275.38	\$31.31	\$32.29	\$32.37	38.7	39.1	39.4
Mining, Logging & Construction	\$1,321.67	\$1,336.44	\$1,347.06	\$33.46	\$34.18	\$34.54	39.5	39.1	39.0
Manufacturing	\$1,162.75	\$1,228.52	\$1,243.44	\$30.28	\$31.42	\$31.40	38.4	39.1	39.6
Private Service-Providing	\$981.22	\$1,012.35	\$1,012.65	\$29.29	\$30.31	\$30.41	33.5	33.4	33.3
Trade, Transportation, & Utilities	\$893.11	\$877.59	\$888.88	\$26.66	\$26.92	\$27.10	33.5	32.6	32.8
Information	\$1,460.67	\$1,719.23	\$1,699.01	\$39.16	\$43.97	\$44.13	37.3	39.1	38.5
Financial Activities	\$1,456.13	\$1,392.36	\$1,420.45	\$38.83	\$37.53	\$38.81	37.5	37.1	36.6
Professional & Business Services	\$1,301.23	\$1,381.24	\$1,368.25	\$35.65	\$37.13	\$36.88	36.5	37.2	37.1
Private Education & Health Services	\$966.92	\$1,009.58	\$999.88	\$28.19	\$29.52	\$29.67	34.3	34.2	33.7
Leisure & Hospitality	\$503.45	\$529.30	\$527.33	\$19.07	\$19.75	\$19.75	26.4	26.8	26.7
Other Services	\$873.08	\$1,016.58	\$1,042.10	\$26.14	\$30.62	\$30.65	33.4	33.2	34.0

**TENNESSEE & UNITED STATES
UNEMPLOYMENT RATES**
(Seasonally Adjusted)



**TENNESSEE & UNITED STATES
LABOR FORCE PARTICIPATION RATES**
(Seasonally Adjusted)

