



Tennessee Labor Market Report

Bill Lee
Governor

Deniece Thomas
Commissioner

March
2025

Highlights

Pages 1-3: 2024 Annual Average Nonfarm Employment and Labor Force Data

Page 4: Tennessee annual average labor force statistics, and March county unemployment rates

Pages 5-6: Monthly Tennessee nonfarm employment, and MSA and city labor force data

Pages 7-10: Monthly nonfarm employment statistics for the four largest MSA's and graphs of the unemployment rates

Page 11: Monthly nonfarm employment for each small MSA in Tennessee

Page 12: Monthly consumer price index and hours and earnings for all workers by industry and production workers in manufacturing, graphs of Tennessee unemployment and labor force participation rates

Nonfarm Employment & Labor Force Data 2020-2024

The Bureau of Labor Statistics has two cooperating agreements with states to produce employment and unemployment data for states and substate areas. The Current Employment Statistics (CES) program samples approximately 121,000 businesses and government agencies representing 631,000 worksites in the U.S. The survey is done on a monthly basis by asking for an establishment's employment, hours, and earnings for the pay period that includes the 12th of each month. This data is used to produce monthly nonfarm employment estimates. These estimates provide total employment, by industry, for the state and metropolitan statistical areas (MSAs). This data is compiled based on the employee's place of work.

The second cooperative agreement is the Local Area Unemployment Statistics (LAUS) program. The primary source data is obtained by the Bureau of the Census through the Current Population Survey (CPS). The CPS is a monthly survey of about 60,000 households from which is obtained information concerning an individual's labor force status, such as whether he/she is working or seeking work. This data is then used to produce the monthly labor force estimates for the U.S. Additional data from the CES program, state unemployment insurance (UI) systems and the Census Bureau's American Community Survey are used to create estimates for states and substate areas. These estimates include the total labor force, total employed, unemployed, and the unemployment rate. The LAUS program compiles data based on the employee's place of residence, rather than place of work.

The monthly data for both programs are revised to produce annual averages at the end of each year. Pages 2 and 3 of this publication show the annual averages for Tennessee and each MSA. Nonfarm employment provides a glimpse of growing and declining industries.

Total nonfarm employment in Tennessee averaged 3,374,100 jobs in 2024. This is

362,800 more jobs than in 2020 and 40,700 more jobs than in 2023. All but one of Tennessee's ten MSA's experienced an increase in annual average employment between 2023 and 2024. The Cleveland MSA lost 500 jobs while the Nashville MSA added 21,400 jobs, the largest absolute increase. The Clarksville MSA saw the highest growth rate in 2024 at 2.7 percent (2,800 additional jobs).

The industry with the largest absolute job growth in Tennessee was private education and health services which added 18,800 jobs in 2024. Of these, 17,600 were in health care and social assistance. The greatest decline occurred in administrative and support and waste management and remediation services (down 12,900 jobs). Heavy and civil engineering construction added 2,900 jobs yielding a growth rate of 14.1 percent, the highest of any industry. Electrical equipment, appliance and component manufacturing followed with a growth rate of 12.4 percent.

The average number of employed Tennessee residents increased 32,421 from 2023 to 2024, while the number unemployed increased 7,844. The unemployment rate increased from 3.2 percent in 2023 to 3.4 percent in 2024. The labor force grew by over 40,000 people. Given that the number of employed and unemployed increased, it is new labor force participants primarily driving the unemployment rate higher rather than job loss. Despite the increase in the labor force, the participation rate declined slightly from 59.7 percent to 59.6 percent. This suggests the population is growing at a faster rate than the labor force.

The unemployment rate increased in all MSA's except Morristown where the rate remained steady at 3.5 percent. Among counties, Williamson had the lowest unemployment rate at 2.7 percent while Perry had the highest at 5.2 percent.

The full 2024 Annual Average report is available in the Archives [here](#).

Tennessee Nonfarm Employment 2020-2024

Industry	2020	2021	2022	2023	2024
Total Nonfarm Employment	3011.3	3110.4	3252.3	3333.4	3374.1
Total Private Employment	2578.5	2678.9	2815.2	2887.9	2920.7
Goods Producing	470.0	490.2	515.9	526.7	532.9
Mining, Logging & Construction	134.2	140.7	151.5	161.2	168.3
Mining & Logging	4.2	4.2	4.5	4.6	4.4
Construction	130.1	136.5	147.1	156.6	163.9
Construction of Buildings	26.8	28.7	32.0	33.5	34.2
Heavy & Civil Engineering Construction	16.8	17.4	19.2	20.5	23.4
Specialty Trade Contractors	86.5	90.4	95.8	102.6	106.3
Manufacturing	335.7	349.5	364.4	365.5	364.6
Durable Goods	211.3	221.5	232.6	234.7	235.1
Wood Product Manufacturing	12.7	13.2	14.0	13.7	13.4
Nonmetallic Mineral Product Manufacturing	13.6	13.9	14.9	15.3	15.3
Primary Metal Manufacturing	10.5	11.0	11.2	11.2	11.1
Fabricated Metal Product Manufacturing	36.9	39.5	41.9	42.4	42.2
Machinery Manufacturing	23.4	24.0	24.9	24.8	24.8
Computer & Electronic Product Manufacturing	6.1	6.4	7.0	7.8	7.6
Electrical Equipment, Appliance Manufacturing	17.2	18.3	19.0	19.4	21.8
Transportation Equipment Manufacturing	65.6	69.0	73.0	75.0	74.8
Furniture & Related Product Manufacturing	9.1	9.6	9.5	8.8	9.0
Miscellaneous Manufacturing	16.2	16.5	17.2	16.4	15.2
Non-Durable Goods	124.5	128.0	131.8	130.8	129.5
Food Manufacturing	36.2	37.6	39.5	40.9	41.1
Beverage & Tobacco Product Manufacturing	6.8	7.2	7.3	7.4	7.0
Paper Manufacturing	12.5	12.5	13.4	13.1	12.7
Printing & Related Support Activities	8.2	8.0	8.2	8.2	7.9
Chemical Manufacturing	25.6	26.2	26.7	27.0	27.1
Plastics & Rubber Products Manufacturing	23.1	24.2	25.4	25.0	24.7
Service-Providing	2541.3	2620.2	2736.4	2806.8	2841.2
Private Service Providing	2108.5	2188.7	2299.2	2361.3	2387.8
Trade, Transportation, & Utilities	628.6	650.5	676.3	686.4	694.9
Wholesale Trade	118.8	121.3	128.8	134.2	137.0
Merchant Wholesalers, Durable Goods	70.0	71.4	76.0	78.5	80.9
Merchant Wholesalers, Nondurable Goods	42.0	43.0	45.7	48.5	49.2
Wholesale Trade Agents and Brokers	6.8	7.0	7.2	7.2	6.9
Retail Trade	323.9	331.3	341.2	344.9	345.5
Motor Vehicle & Parts Dealers	45.5	46.8	47.8	48.4	48.5
Building Material & Garden Equipment & Supplies	31.7	32.6	33.8	34.3	34.1
Food and Beverage Retailers	58.9	57.8	58.8	59.9	60.5
Furniture/Furnishings/Electronics/Appliance	20.2	19.9	19.7	18.6	18.3
General Merchandise Retailers	72.4	73.2	76.4	77.6	78.6
Health & Personal Care Retailers	23.1	25.2	25.2	24.5	24.0
Gasoline Stations & Fuel Dealers	24.6	24.6	25.6	26.6	26.2
Clothing/Accessories/Shoe/Jewelry Retail	20.5	22.1	23.2	23.3	22.9
Sporting Goods/Hobby/Music Inst/Book/Misc	27.0	29.1	30.8	31.8	32.4
Transportation, Warehousing, & Utilities	185.9	197.9	206.3	207.3	212.4
Utilities	3.8	4.0	4.2	4.4	4.5
Transportation & Warehousing	182.1	194.0	202.1	203.0	207.9
Truck Transportation	57.4	57.1	59.2	58.3	56.6
Information	43.3	47.2	54.5	55.9	54.7
Financial Activities	175.1	176.6	184.8	191.6	192.5
Finance & Insurance	135.4	135.9	142.0	146.9	147.7
Real Estate & Rental & Leasing	39.8	40.7	42.9	44.7	44.8
Professional & Business Services	416.4	437.8	462.8	462.8	453.2
Professional, Scientific, & Technical Services	147.7	158.3	170.0	176.0	178.3
Management of Companies & Enterprises	50.1	51.8	54.2	57.1	58.1
Administrative & Support & Waste Mgmt.	218.6	227.6	238.6	229.7	216.8
Private Education & Health Services	434.6	439.9	451.5	473.9	492.7
Private Educational Services	59.7	61.6	64.6	67.3	68.5
Health Care & Social Assistance	374.9	378.3	387.0	406.6	424.2
Ambulatory Health Care Services	152.6	159.0	165.5	171.9	176.3
Hospitals	108.9	110.2	111.5	118.2	126.0
Nursing & Residential Care Facilities	60.6	57.0	56.8	60.1	62.4
Social Assistance	52.8	52.1	53.2	56.4	59.5
Leisure & Hospitality	293.4	314.5	344.1	362.4	367.9
Arts, Entertainment, & Recreation	33.7	37.4	43.5	47.8	50.5
Accommodation & Food Services	259.7	277.2	300.6	314.6	317.3
Accommodation	29.1	31.2	36.5	37.7	37.5
Food Services & Drinking Places	230.7	246.0	264.1	276.9	279.8
Other Services	117.1	122.1	125.2	128.3	132.0
Government	432.8	431.5	437.1	445.5	453.4
Federal Government	51.9	51.6	52.4	55.7	58.4
State Government	95.6	94.6	94.8	97.8	99.7
State Government Educational Services	54.4	54.2	55.0	56.6	57.2
State Government Excluding Education	41.3	40.4	39.8	41.2	42.4
Local Government	285.3	285.3	289.9	292.0	295.4
Local Government Educational Services	138.3	140.7	144.1	145.3	147.8
Local Government Excluding Education	147.0	144.6	145.9	146.7	147.6

Source: Bureau of Labor Statistics

MSA Nonfarm Employment 2020-2024

MSA Total Nonfarm Employment	2020	2021	2022	2023	2024
Chattanooga, TN-GA MSA	255.1	261.3	274.7	288.9	295.7
Clarksville-Hopkinsville, TN-KY MSA	94.2	97.2	101.3	104.3	107.1
Cleveland MSA	47.9	46.6	47.1	47.3	46.8
Jackson MSA	82.5	84.6	86.5	87.8	88.5
Johnson City MSA	79.2	82.4	84.7	86.1	86.9
Kingsport-Bristol, TN-VA MSA	115.7	117.1	121.2	124.1	125.5
Knoxville MSA	394.7	409.6	429.9	441.9	451.1
Memphis, TN-AR-MS MSA	628.0	642.0	659.50	659.9	660.0
Morristown MSA	46.1	47.0	48.8	49.4	50.7
Nashville MSA	1,002.8	1,055.5	1,125.7	1,164.2	1,185.6

Tennessee Labor Force Estimates 2020-2024

Labor Force Estimates (by place of residence)	2020	2021	2022	2023	2024
Labor Force	3,294,793	3,316,876	3,361,656	3,380,108	3,420,373
Labor Force Participation Rate	60.5%	60.3%	60.3%	59.7%	59.6%
Employment	3,049,480	3,168,586	3,248,260	3,270,602	3,303,023
Unemployment	245,313	148,290	113,396	109,506	117,350
Unemployment Rate	7.4%	4.5%	3.4%	3.2%	3.4%

MSA Labor Force Estimates 2020-2024

	Chattanooga, TN-GA MSA					Clarksville-Hopkinsville, TN-KY MSA				
	2020	2021	2022	2023	2024	2020	2021	2022	2023	2024
Labor Force	270,365	270,945	276,720	285,839	291,583	130,918	132,364	134,367	135,762	139,265
Employment	252,834	260,306	267,699	277,149	282,272	121,665	126,275	129,220	130,532	133,548
Unemployment	17,531	10,639	9,021	8,690	9,311	9,253	6,089	5,147	5,230	5,717
Unemployment Rate	6.5%	3.9%	3.3%	3.0%	3.2%	7.1%	4.6%	3.8%	3.9%	4.1%

	Cleveland MSA					Jackson MSA				
	2020	2021	2022	2023	2024	2020	2021	2022	2023	2024
Labor Force	59,351	57,322	56,879	56,623	56,262	79,161	78,924	78,264	77,962	78,340
Employment	55,406	54,847	54,814	54,631	54,172	73,145	75,120	75,383	75,202	75,329
Unemployment	3,945	2,475	2,065	1,992	2,090	6,016	3,804	2,881	2,760	3,011
Unemployment Rate	6.6%	4.3%	3.6%	3.5%	3.7%	7.6%	4.8%	3.7%	3.5%	3.8%

	Johnson City MSA					Kingsport-Bristol, TN-VA MSA				
	2020	2021	2022	2023	2024	2020	2021	2022	2023	2024
Labor Force	94,729	95,922	96,206	96,159	96,944	130,601	129,049	130,633	132,159	132,960
Employment	88,718	92,193	93,001	92,970	93,526	121,275	123,400	126,110	127,673	128,213
Unemployment	6,011	3,729	3,205	3,189	3,418	9,326	5,649	4,523	4,486	4,747
Unemployment Rate	6.3%	3.9%	3.3%	3.3%	3.5%	7.1%	4.4%	3.5%	3.4%	3.6%

	Knoxville MSA					Memphis, TN-AR-MS MSA				
	2020	2021	2022	2023	2024	2020	2021	2022	2023	2024
Labor Force	425,728	431,788	441,410	445,488	453,001	642,570	642,671	634,814	623,912	625,965
Employment	399,373	415,879	427,620	432,041	438,663	586,833	602,694	608,815	600,092	600,266
Unemployment	26,355	15,909	13,790	13,447	14,338	55,737	39,977	25,999	23,820	25,699
Unemployment Rate	6.2%	3.7%	3.1%	3.0%	3.2%	8.7%	6.2%	4.1%	3.8%	4.1%

	Morristown MSA					Nashville MSA				
	2020	2021	2022	2023	2024	2020	2021	2022	2023	2024
Labor Force	52,612	52,379	52,893	52,751	53,781	1,071,982	1,092,887	1,127,416	1,143,090	1,161,120
Employment	48,777	50,154	50,974	50,896	51,889	996,282	1,051,245	1,096,154	1,112,862	1,128,079
Unemployment	3,835	2,225	1,919	1,855	1,892	75,700	41,642	31,262	30,228	33,041
Unemployment Rate	7.3%	4.2%	3.6%	3.5%	3.5%	7.1%	3.8%	2.8%	2.6%	2.8%

Source: Bureau of Labor Statistics

Tennessee Civilian Labor Workforce 1995-Present

County Unemployment Rates*

(NUMBERS IN THOUSANDS)

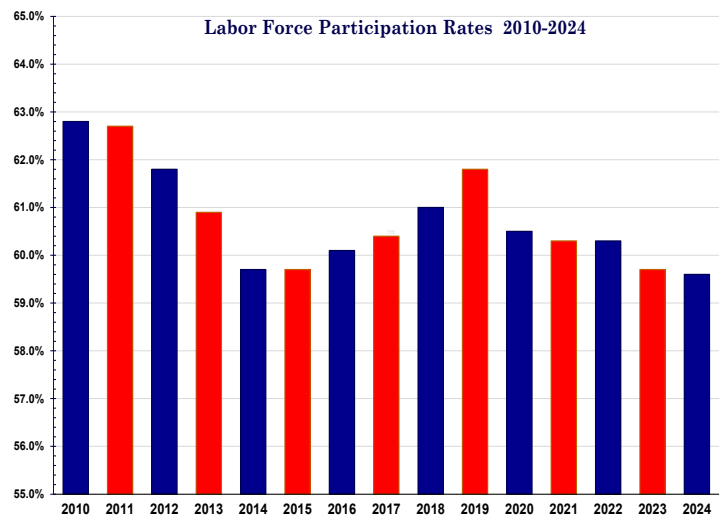
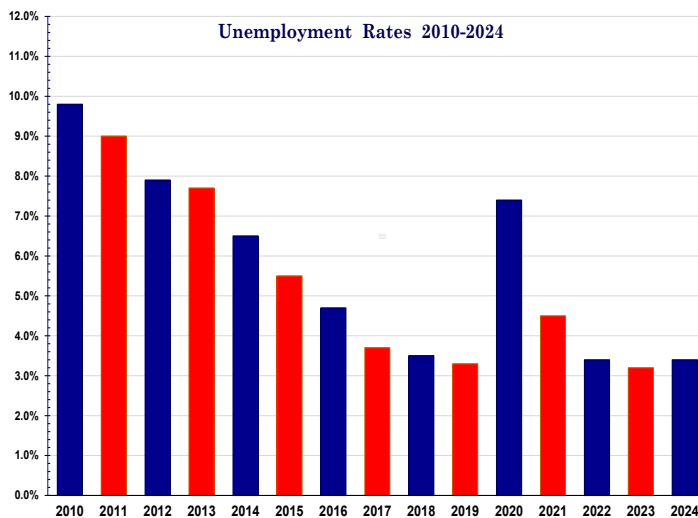
MONTHLY DATA NOT SEASONALLY ADJUSTED

Year and Month	Civilian noninstitutional population	Civilian Labor Force					
		Total	Participation Rate (%)	Employed		Unemployed	
				Total	Rate (%)	Total	Rate (%)
1995	4,074.0	2,719.0	66.7%	2,579.8	63.3%	139.3	5.1%
1996	4,148.2	2,758.8	66.5%	2,615.2	63.0%	143.6	5.2%
1997	4,216.7	2,775.2	65.8%	2,630.3	62.4%	145.0	5.2%
1998	4,270.1	2,804.4	65.7%	2,683.0	62.8%	121.4	4.3%
1999	4,314.7	2,835.9	65.7%	2,723.6	63.1%	112.3	4.0%
2000	4,357.9	2,845.3	65.3%	2,736.0	62.8%	109.3	3.8%
2001	4,402.5	2,858.1	64.9%	2,726.6	61.9%	131.5	4.6%
2002	4,447.3	2,898.3	65.2%	2,748.6	61.8%	149.8	5.2%
2003	4,495.8	2,907.1	64.7%	2,746.0	61.1%	161.0	5.5%
2004	4,546.2	2,899.8	63.8%	2,745.2	60.4%	154.6	5.3%
2005	4,616.0	2,899.8	62.8%	2,740.4	59.4%	159.5	5.5%
2006	4,699.5	3,015.6	64.2%	2,858.7	60.8%	156.9	5.2%
2007	4,768.4	3,047.7	63.9%	2,906.1	60.9%	141.6	4.6%
2008	4,831.3	3,067.9	63.5%	2,869.5	59.4%	198.4	6.5%
2009	4,879.4	3,050.4	62.5%	2,733.2	56.0%	317.2	10.4%
2010	4,928.4	3,094.8	62.8%	2,791.6	56.6%	303.2	9.8%
2011	4,973.9	3,119.2	62.7%	2,837.1	57.0%	282.2	9.0%
2012	5,021.2	3,102.5	61.8%	2,856.5	56.9%	246.0	7.9%
2013	5,065.8	3,086.0	60.9%	2,849.5	56.3%	236.4	7.7%
2014	5,111.4	3,052.6	59.7%	2,852.7	55.8%	199.9	6.5%
2015	5,161.2	3,078.8	59.7%	2,908.0	56.3%	170.9	5.5%
2016	5,216.3	3,135.2	60.1%	2,987.2	57.3%	148.0	4.7%
2017	5,274.9	3,187.8	60.4%	3,068.3	58.2%	119.5	3.7%
2018	5,331.4	3,250.0	61.0%	3,137.0	58.8%	113.1	3.5%
2019	5,384.7	3,329.4	61.8%	3,218.1	59.8%	111.4	3.3%
2020	5,443.9	3,294.8	60.5%	3,049.5	56.0%	245.3	7.4%
2021	5,498.3	3,316.9	60.3%	3,168.6	57.6%	148.3	4.5%
2022	5,578.0	3,361.7	60.3%	3,248.3	58.2%	113.4	3.4%
2023	5,661.6	3,380.1	59.7%	3,270.6	57.8%	109.5	3.2%
2024	5,739.4	3,420.4	59.6%	3,303.0	57.5%	117.4	3.4%
2025							
January	5,777.8	3,430.5	59.4%	3,300.3	57.1%	130.2	3.8%
February (r)	5,782.4	3,436.7	59.4%	3,317.6	57.4%	119.1	3.5%
March (p)	5,787.5	3,464.9	59.9%	3,351.3	57.9%	113.6	3.3%
April							
May							
June							
July							
August							
September							
October							
November							
December							

(r)=revised
(p)=preliminary

County	Mar.	Mar.	County	Mar.	Mar.
	2024	2025		2024	2025
Anderson	3.1	3.2	Lauderdale	4.8	4.8
Bedford	2.7	2.9	Lawrence	3.3	3.6
Benton	4.1	4.2	Lewis	2.9	3.7
Bledsoe	2.8	2.9	Lincoln	3.0	3.3
Blount	2.8	2.8	Loudon	3.0	3.2
Bradley	3.7	3.5	Macon	2.4	2.8
Campbell	3.3	3.3	Madison	3.5	3.8
Cannon	2.8	3.0	Marion	3.3	3.8
Carroll	3.6	3.8	Marshall	3.0	3.1
Carter	3.4	3.8	Maury	2.5	2.9
Cheatham	2.5	2.6	McMinn	3.9	4.2
Chester	3.6	3.6	McNairy	3.6	3.9
Claiborne	3.8	3.6	Meigs	4.9	4.9
Clay	4.8	4.7	Monroe	3.3	3.6
Cocke	4.1	5.0	Montgomery	3.3	3.4
Coffee	3.0	3.3	Moore	3.1	3.3
Crockett	3.3	3.7	Morgan	3.6	3.8
Cumberland	4.4	4.3	Morgan	3.2	3.3
Davidson	2.7	2.8	Overton	3.4	3.4
Decatur	4.1	4.0	Perry	4.5	4.4
DeKalb	3.6	3.8	Pickett	4.8	5.7
Dickson	2.5	2.9	Polk	3.6	3.5
Dyer	3.2	3.3	Putnam	3.0	3.1
Fayette	3.2	3.5	Rhea	3.5	3.7
Fentress	3.3	3.3	Roane	3.4	3.5
Franklin	3.5	3.4	Robertson	2.6	2.8
Gibson	3.4	3.5	Rutherford	2.5	2.7
Giles	3.4	3.9	Scherer	4.2	3.6
Grainger	3.4	3.5	Sequatchie	3.4	3.7
Greene	3.9	4.2	Sevier	2.9	3.3
Grundy	4.0	4.0	Shelby	4.1	4.4
Hamblen	3.1	3.4	Smith	2.8	3.1
Hamilton	2.9	3.0	Stewart	3.5	3.6
Hancock	4.0	4.1	Sullivan	3.2	3.3
Hardeman	4.2	5.2	Sumner	2.6	2.8
Hardin	3.5	3.7	Tipton	3.5	3.5
Hawkins	3.8	4.0	Trousdale	2.5	3.0
Haywood	2.8	3.1	Unicoi	3.4	4.7
Henderson	3.5	3.7	Union	3.1	3.5
Henry	3.8	3.9	Van Buren	3.3	3.3
Hickman	2.7	3.0	Warren	3.7	3.6
Houston	3.9	3.9	Washington	2.9	3.0
Humphreys	3.5	3.5	Wayne	3.2	3.4
Jackson	3.5	4.2	Weakley	3.4	3.5
Jefferson	3.1	3.3	White	3.7	4.1
Johnson	4.4	5.1	Williamson	2.4	2.4
Knox	2.7	2.7	Wilson	2.6	2.7
Lake	4.0	4.9			

*Data Not Seasonally Adjusted



Statewide

Estimated Nonfarm Employment (in thousands)

Industry	Mar. 2024	Revised Feb. 2025	Preliminary Mar. 2025	Net Change	
				Feb. 2025 Mar. 2025	Mar. 2024 Mar. 2025
Total Nonfarm	3369.8	3,366.2	3,375.2	9.0	5.4
Total Private	2908.9	2,900.4	2,908.0	7.6	-0.9
Goods Producing	532.8	530.6	529.7	-0.9	-3.1
Mining, Logging & Construction	166.4	164.5	164.8	0.3	-1.6
Mining & Logging	4.3	4.5	4.5	0.0	0.2
Construction	162.1	160.0	160.3	0.3	-1.8
Construction of Buildings	33.5	34.0	34.0	0.0	0.5
Heavy and Civil Engineering	22.8	22.8	23.3	0.5	0.5
Specialty Trade Contractors	105.8	103.2	103.0	-0.2	-2.8
Manufacturing	366.4	366.1	364.9	-1.2	-1.5
Durable Goods Manufacturing	235.7	237.9	237.2	-0.7	1.5
Wood Product Manufacturing	13.6	13.4	13.3	-0.1	-0.3
Nonmetallic Mineral Product Manufacturing	15.3	15.4	15.3	-0.1	0.0
Primary Metal Manufacturing	11.0	11.3	11.3	0.0	0.3
Fabricated Metal Product Manufacturing	42.0	43.2	43.1	-0.1	1.1
Machinery Manufacturing	24.7	25.2	25.2	0.0	0.5
Computer & Electronic Product Manufacturing	7.5	7.8	7.8	0.0	0.3
Electrical Equipment & Appliance Manufacturing	21.8	22.3	22.3	0.0	0.5
Transportation Equipment Manufacturing	75.6	74.9	74.5	-0.4	-1.1
Furniture & Related Product Manufacturing	8.9	9.2	9.2	0.0	0.3
Miscellaneous Manufacturing	15.3	15.2	15.2	0.0	-0.1
Nondurable Goods Manufacturing	130.7	128.2	127.7	-0.5	-3.0
Food Manufacturing	41.2	40.8	40.8	0.0	-0.4
Beverage & Tobacco Product Manufacturing	7.0	6.8	6.8	0.0	-0.2
Paper Manufacturing	12.9	12.5	12.4	-0.1	-0.5
Printing & Related Support Activities	8.0	7.7	7.6	-0.1	-0.4
Chemical Manufacturing	27.3	26.9	26.8	-0.1	-0.5
Plastics & Rubber Products Manufacturing	25.0	23.8	23.6	-0.2	-1.4
Service Providing	2837.0	2,835.6	2,845.5	9.9	8.5
Trade, Transportation, & Utilities	688.8	692.6	692.4	-0.2	3.6
Wholesale Trade	136.6	137.6	137.3	-0.3	0.7
Merchant Wholesalers, Durable Goods	80.7	81.1	80.6	-0.5	-0.1
Merchant Wholesalers, Nondurable Goods	49.0	49.6	49.8	0.2	0.8
Wholesale Trade Agents & Brokers	6.9	6.9	6.9	0.0	0.0
Retail Trade	343.3	345.7	346.6	0.9	3.3
Motor Vehicle & Parts Dealers	48.3	48.5	49.1	0.6	0.8
Building Material, Garden Equipment, & Supplies	34.3	33.3	35.0	1.7	0.7
Food & Beverage Retailers	60.2	61.2	61.1	-0.1	0.9
Furniture, Home Furnishings, Electronics, & Appliance	18.3	18.3	18.1	-0.2	-0.2
General Merchandise Retailers	77.5	79.2	78.5	-0.7	1.0
Health & Personal Care Retailers	24.4	23.5	23.4	-0.1	-1.0
Gasoline Stations & Fuel Dealers	25.9	26.1	26.1	0.0	0.2
Clothing, Clothing Accessories, Shoe & Jewelry Retail	22.5	22.8	22.6	-0.2	0.1
Sporting Goods, Hobby, Music, & Book Retailers	31.9	32.8	32.7	-0.1	0.8
Transportation, Warehousing, & Utilities	208.9	209.3	208.5	-0.8	-0.4
Utilities	4.4	4.5	4.5	0.0	0.1
Transportation & Warehousing	204.5	204.8	204.0	-0.8	-0.5
Truck Transportation	56.7	54.4	55.2	0.8	-1.5
Information	54.6	53.6	53.3	-0.3	-1.3
Financial Activities	191.8	192.1	191.2	-0.9	-0.6
Finance & Insurance	147.2	147.9	147.4	-0.5	0.2
Real Estate, Rental, & Leasing	44.6	44.2	43.8	-0.4	-0.8
Professional & Business Services	455.0	445.5	448.8	3.3	-6.2
Professional, Scientific, & Technical Services	178.8	180.9	184.1	3.2	5.3
Management of Companies & Enterprises	58.5	58.1	58.2	0.1	-0.3
Administrative, Support, & Waste Management	217.7	206.5	206.5	0.0	-11.2
Private Educational & Health Services	492.4	494.6	493.2	-1.4	0.8
Private Educational Services	72.1	71.0	70.9	-0.1	-1.2
Health Care & Social Assistance	420.3	423.6	422.3	-1.3	2.0
Ambulatory Health Care Services	174.6	175.8	175.2	-0.6	0.6
Hospitals	125.0	125.1	125.1	0.0	0.1
Nursing & Residential Care Facilities	62.2	63.2	63.5	0.3	1.3
Social Assistance	58.5	59.5	58.5	-1.0	0.0
Leisure & Hospitality	361.9	357.7	365.2	7.5	3.3
Arts, Entertainment, & Recreation	47.7	45.7	49.1	3.4	1.4
Accommodation & Food Services	314.2	312.0	316.1	4.1	1.9
Accommodation	36.8	35.8	36.3	0.5	-0.5
Food Services & Drinking Places	277.4	276.2	279.8	3.6	2.4
Other Services	131.6	133.7	134.2	0.5	2.6
Government	460.9	465.8	467.2	1.4	6.3
Federal Government	57.9	58.8	58.7	-0.1	0.8
State Government	103.6	106.3	106.6	0.3	3.0
State Government Educational Services	61.5	63.4	63.6	0.2	2.1
State Government Excluding Educational Services	42.1	42.9	43.0	0.1	0.9
Local Government	299.4	300.7	301.9	1.2	2.5
Local Government Educational Services	152.3	152.5	152.9	0.4	0.6
Local Government Excluding Educational Services	147.1	148.2	149.0	0.8	1.9

Nonfarm Employment Summary

Monthly Employment Changes

Total Nonfarm	+9,000
Accommodation & Food Services	+5,300
Food Services & Drinking Places	+3,600
Arts, Entertainment & Recreation	+3,400
Professional, Scientific & Tech Services	+3,200
Bldg Material & Garden Equip Retail	+1,700
Local Government	+1,200
Local Government Exc. Education	+800
Truck Transportation	+800
Manufacturing	-1,200
Durable Goods Manufacturing	-700
Social Assistance	-1,000
Financial Activities	-900
Transportation & Warehousing	-800
General Merchandise Retailers	-700

Annual Changes

Total Nonfarm	+5,400
Government	+6,300
State Government	+3,000
Local Government	+2,500
Professional, Scientific & Tech Services	+5,300
Retail Trade	+3,300
Leisure & Hospitality	+3,300
Other Services	+2,600
Admin, Support & Waste Mgmt. Svcs.	-11,200
Specialty Trade Contractors	-2,800

Monthly Unemployment Rates Counties

Increased	8
Decreased	70
Unchanged	17
Highest/Lowest Rate	Rate
Williamson County	2.4%
Pickett County	5.7%

The data from all the nonfarm employment estimates tables include all full- and part-time nonfarm wage and salary employees who worked during or received pay for any part of the pay period that includes the 12th of the month. This is a count of jobs by place of work. Agricultural workers, proprietors, self-employed persons, workers in private households, and unpaid family workers are excluded. These numbers may not add due to rounding. Data are based on the 2024 benchmark.

Civilian Labor Force

	March 2024				February 2025				March 2025			
	Labor Force	Employed	Unemployed	Rate	Labor Force	Employed	Unemployed	Rate	Labor Force	Employed	Unemployed	Rate
Seasonally Adjusted												
UNITED STATES	167,922,000	161,425,000	6,497,000	3.9	170,359,000	163,307,000	7,052,000	4.1	170,591,000	163,508,000	7,083,000	4.2
TENNESSEE	3,405,989	3,299,746	106,243	3.1	3,444,318	3,316,975	127,343	3.7	3,448,697	3,323,681	125,016	3.6
Not Seasonally Adjusted												
UNITED STATES	167,960,000	161,356,000	6,604,000	3.9	170,116,000	162,544,000	7,572,000	4.5	170,654,000	163,412,000	7,242,000	4.2
TENNESSEE	3,418,376	3,311,916	106,460	3.1	3,436,702	3,317,587	119,115	3.5	3,464,857	3,351,296	113,561	3.3
Metropolitan Statistical Areas												
Chattanooga	291,250	282,595	8,655	3.0	291,361	281,897	9,464	3.2	293,859	284,547	9,312	3.2
Clarksville	139,022	133,650	5,372	3.9	141,357	135,572	5,785	4.1	142,395	136,598	5,797	4.1
Cleveland	56,530	54,448	2,082	3.7	56,343	54,322	2,021	3.6	56,693	54,693	2,000	3.5
Jackson	78,124	75,416	2,708	3.5	78,693	75,723	2,970	3.8	79,350	76,413	2,937	3.7
Johnson City	97,434	94,456	2,978	3.1	97,774	94,447	3,327	3.4	98,666	95,387	3,279	3.3
Kingsport-Bristol	133,732	129,451	4,281	3.2	133,343	128,563	4,780	3.6	134,532	129,764	4,768	3.5
Knoxville	451,504	438,633	12,871	2.9	456,263	442,528	13,735	3.0	460,114	446,667	13,447	2.9
Memphis	626,619	603,504	23,115	3.7	625,310	598,127	27,183	4.3	629,437	602,785	26,652	4.2
Morristown	53,572	51,911	1,661	3.1	54,624	52,530	2,094	3.8	54,958	53,127	1,831	3.3
Nashville-Murfreesboro	1,159,955	1,129,925	30,030	2.6	1,166,682	1,132,362	34,320	2.9	1,177,033	1,144,773	32,260	2.7
Metropolitan Statistical Areas												
Athens	25,013	23,986	1,027	4.1	25,165	24,067	1,098	4.4	25,313	24,226	1,087	4.3
Cookeville	64,094	62,035	2,059	3.2	64,465	62,231	2,234	3.5	64,825	62,622	2,203	3.4
Crossville	23,013	22,006	1,007	4.4	23,254	22,201	1,053	4.5	23,432	22,420	1,012	4.3
Dyersburg	17,972	17,397	575	3.2	18,154	17,546	608	3.3	18,313	17,713	600	3.3
Fayetteville	16,644	16,151	493	3.0	16,771	16,199	572	3.4	16,802	16,241	561	3.3
Greeneville	28,208	27,113	1,095	3.9	28,431	27,177	1,254	4.4	28,659	27,464	1,195	4.2
Lawrenceburg	18,962	18,339	623	3.3	19,390	18,501	889	4.6	19,323	18,634	689	3.6
Lewisburg	16,308	15,820	488	3.0	16,854	16,042	812	4.8	16,696	16,173	523	3.1
Martin	13,899	13,420	479	3.4	14,027	13,505	522	3.7	14,083	13,592	491	3.5
McMinnville	17,261	16,623	638	3.7	17,166	16,569	597	3.5	17,216	16,595	621	3.6
Newport	14,828	14,214	614	4.1	15,080	14,095	985	6.5	15,130	14,370	760	5.0
Paris	12,456	11,979	477	3.8	12,924	12,400	524	4.1	12,961	12,453	508	3.9
Sevierville	51,603	50,110	1,493	2.9	51,447	48,906	2,541	4.9	52,704	50,974	1,730	3.3
Shelbyville	25,609	24,920	689	2.7	25,766	24,995	771	3.0	25,974	25,227	747	2.9
Tullahoma-Manchester	29,659	28,759	900	3.0	29,428	28,446	982	3.3	29,604	28,637	967	3.3
Union City	13,382	12,948	434	3.2	13,612	13,133	479	3.5	13,821	13,359	462	3.3
Winchester	18,409	17,767	642	3.5	18,317	17,707	610	3.3	18,496	17,874	622	3.4
Cities												
Bartlett	27,551	26,644	907	3.3	27,283	26,362	921	3.4	27,492	26,599	893	3.2
Brentwood	22,442	21,855	587	2.6	22,430	21,887	543	2.4	22,672	22,114	558	2.5
Bristol	12,442	12,036	406	3.3	12,452	12,028	424	3.4	12,584	12,170	414	3.3
Chattanooga	96,410	93,376	3,034	3.1	96,886	93,567	3,319	3.4	97,714	94,505	3,209	3.3
Clarksville	75,881	73,269	2,612	3.4	77,049	74,174	2,875	3.7	77,856	75,019	2,837	3.6
Cleveland	21,251	20,465	786	3.7	21,215	20,413	802	3.8	21,380	20,555	825	3.9
Collierville	24,947	24,238	709	2.8	24,739	23,981	758	3.1	24,949	24,197	752	3.0
Columbia	24,064	23,416	648	2.7	25,065	23,465	1,600	6.4	24,536	23,733	803	3.3
Cookeville	16,512	16,008	504	3.1	16,465	15,964	501	3.0	16,600	16,059	541	3.3
Farragut	12,821	12,492	329	2.6	12,902	12,593	309	2.4	13,057	12,720	337	2.6
Franklin	49,074	47,885	1,189	2.4	49,224	47,956	1,268	2.6	49,652	48,453	1,199	2.4
Gallatin	26,355	25,629	726	2.8	26,483	25,692	791	3.0	26,811	25,972	839	3.1
Germantown	18,354	17,829	525	2.9	18,169	17,641	528	2.9	18,320	17,799	521	2.8
Hendersonville	35,606	34,666	940	2.6	35,805	34,752	1,053	2.9	36,100	35,130	970	2.7
Jackson	29,233	28,147	1,086	3.7	29,403	28,216	1,187	4.0	29,691	28,520	1,171	3.9
Johnson City	36,106	35,081	1,025	2.8	36,156	35,077	1,079	3.0	36,540	35,425	1,115	3.1
Kingsport	23,759	22,990	769	3.2	23,865	22,975	890	3.7	24,133	23,246	887	3.7
Knoxville	100,938	98,041	2,897	2.9	101,827	98,835	2,992	2.9	102,826	99,830	2,996	2.9
LaVergne	22,040	21,461	579	2.6	22,141	21,517	624	2.8	22,395	21,759	636	2.8
Lebanon	24,911	24,241	670	2.7	25,066	24,287	779	3.1	25,373	24,580	793	3.1
Maryville	15,709	15,283	426	2.7	15,876	15,425	451	2.8	16,008	15,566	442	2.8
Memphis	284,617	271,705	12,912	4.5	282,903	268,830	14,073	5.0	285,072	271,247	13,825	4.8
Morristown	12,625	12,222	403	3.2	12,859	12,358	501	3.9	12,981	12,509	472	3.6
Mount Juliet	23,417	22,813	604	2.6	23,422	22,856	566	2.4	23,741	23,132	609	2.6
Murfreesboro	95,912	93,407	2,505	2.6	96,455	93,650	2,805	2.9	97,413	94,704	2,709	2.8
Nashville	416,984	405,775	11,209	2.7	418,428	406,314	12,114	2.9	422,898	410,943	11,955	2.8
Oak Ridge	14,597	14,133	464	3.2	14,740	14,245	495	3.4	14,880	14,385	495	3.3
Shelbyville	12,590	12,270	320	2.5	12,674	12,307	367	2.9	12,774	12,421	353	2.8
Smyrna	32,183	31,363	820	2.5	32,304	31,444	860	2.7	32,632	31,798	834	2.6
Spring Hill	32,056	31,336	720	2.2	32,486	31,390	1,096	3.4	32,504	31,727	777	2.4

Chattanooga MSA

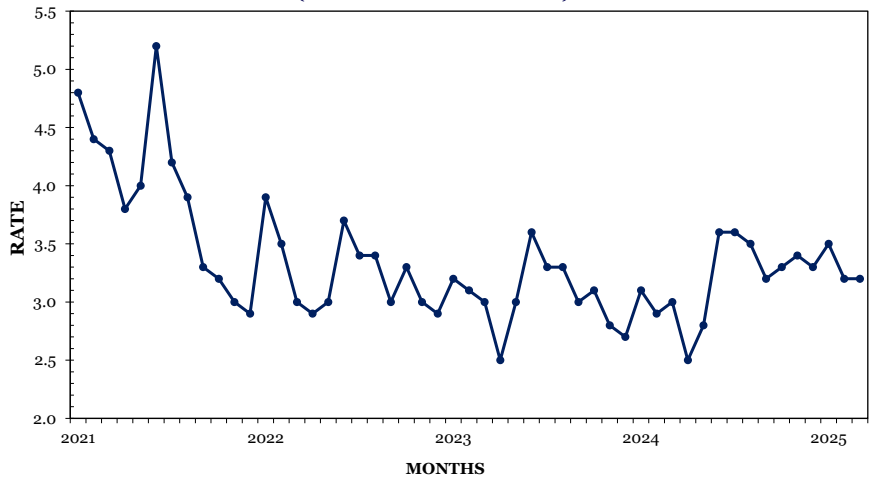
Monthly Employment Changes

Total Nonfarm	+1,100
Professional & Business Services	+1,000
Leisure & Hospitality	+500
Mining, Logging & Construction	+100
Retail Trade	+100
Local Government	+100
Transportation, Warehousing & Utilities	-400
Information	-100

Annual Employment Changes

Total Nonfarm	+700
Goods-Producing	+200
Service-Providing	+500

CHATTANOOGA MSA UNEMPLOYMENT RATES (NOT SEASONALLY ADJUSTED)



Estimated Nonfarm Employment (in thousands)

Industry	Mar. 2024	Revised	Preliminary	Net Change	
		Feb. 2025	Mar. 2025	Feb. 2025 Mar. 2025	Mar. 2024 Mar. 2025
Total Nonfarm	294.5	294.1	295.2	1.1	0.7
Total Private	261.5	261.1	262.1	1.0	0.6
Goods-Producing	55.3	55.4	55.5	0.1	0.2
Mining, Logging, & Construction	14.2	14.5	14.6	0.1	0.4
Manufacturing	41.1	40.9	40.9	0.0	-0.2
Durable Goods Manufacturing	26.5	26.6	26.6	0.0	0.1
Nondurable Goods Manufacturing	14.6	14.3	14.3	0.0	-0.3
Service-Providing	239.2	238.7	239.7	1.0	0.5
Trade, Transportation, & Utilities	54.2	54.7	54.4	-0.3	0.2
Wholesale Trade	8.9	9.0	9.0	0.0	0.1
Retail Trade	28.7	29.0	29.1	0.1	0.4
Transportation, Warehousing, & Utilities	16.6	16.7	16.3	-0.4	-0.3
Information	3.4	3.3	3.2	-0.1	-0.2
Financial Activities	28.5	28.8	28.7	-0.1	0.2
Professional & Business Services	31.4	30.1	31.1	1.0	-0.3
Private Education & Health Services	44.7	45.4	45.3	-0.1	0.6
Leisure & Hospitality	31.0	30.0	30.5	0.5	-0.5
Other Services	13.0	13.4	13.4	0.0	0.4
Government	33.0	33.0	33.1	0.1	0.1
Federal Government	6.2	6.3	6.3	0.0	0.1
State Government	6.8	6.9	6.9	0.0	0.1
Local Government	20.0	19.8	19.9	0.1	-0.1

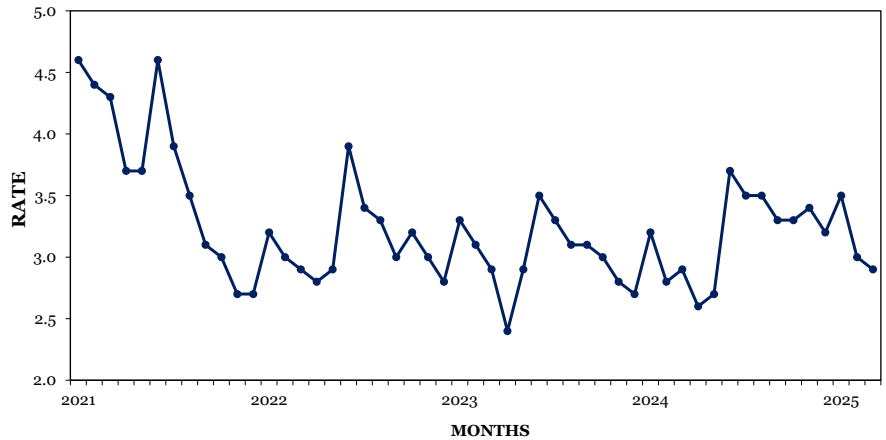
Chattanooga MSA: Hamilton County, Marion County, Sequatchie County, Catoosa County, GA, Dade County, GA, & Walker County, GA

Knoxville MSA

Monthly Employment Changes

Total Nonfarm	+1,300
Leisure & Hospitality	+1,400
Local Government	+300
Mining, Logging & Construction	+100
Professional & Business Services	+100
Transportation, Warehousing & Utilities	-200
Private Education & Health Services	-200
Financial Activities	-100
Annual Employment Changes	
Total Nonfarm	+4,000
Goods-Producing	+100
Service-Providing	+3,900

KNOXVILLE MSA UNEMPLOYMENT RATES (NOT SEASONALLY ADJUSTED)



Estimated Nonfarm Employment (in thousands)

Industry	Mar. 2024	Revised	Preliminary	Net Change	
		Feb 2025	Mar. 2025	Feb. 2025	Mar. 2024
		2025		Mar. 2025	Mar. 2025
Total Nonfarm	449.0	451.7	453.0	1.3	4.0
Total Private	385.5	388.9	390.0	1.1	4.5
Goods-Producing	67.7	67.7	67.8	0.1	0.1
Mining, Logging, & Construction	22.0	22.2	22.3	0.1	0.3
Manufacturing	45.7	45.5	45.5	0.0	-0.2
Durable Goods Manufacturing	34.5	34.8	34.8	0.0	0.3
Nondurable Goods Manufacturing	11.2	10.7	10.7	0.0	-0.5
Service-Providing	381.3	384.0	385.2	1.2	3.9
Trade, Transportation, & Utilities	88.7	90.8	90.6	-0.2	1.9
Wholesale Trade	19.6	20.1	20.1	0.0	0.5
Retail Trade	51.0	51.5	51.5	0.0	0.5
Transportation, Warehousing, & Utilities	18.1	19.2	19.0	-0.2	0.9
Information	6.5	6.0	6.0	0.0	-0.5
Financial Activities	24.1	23.9	23.8	-0.1	-0.3
Professional & Business Services	72.0	71.3	71.4	0.1	-0.6
Private Education & Health Services	62.3	64.7	64.5	-0.2	2.2
Leisure & Hospitality	47.2	46.9	48.3	1.4	1.1
Other Services	17.0	17.6	17.6	0.0	0.6
Government	63.5	62.8	63.0	0.2	-0.5
Federal Government	5.7	5.8	5.8	0.0	0.1
State Government	21.1	20.8	20.7	-0.1	-0.4
Local Government	36.7	36.2	36.5	0.3	-0.2

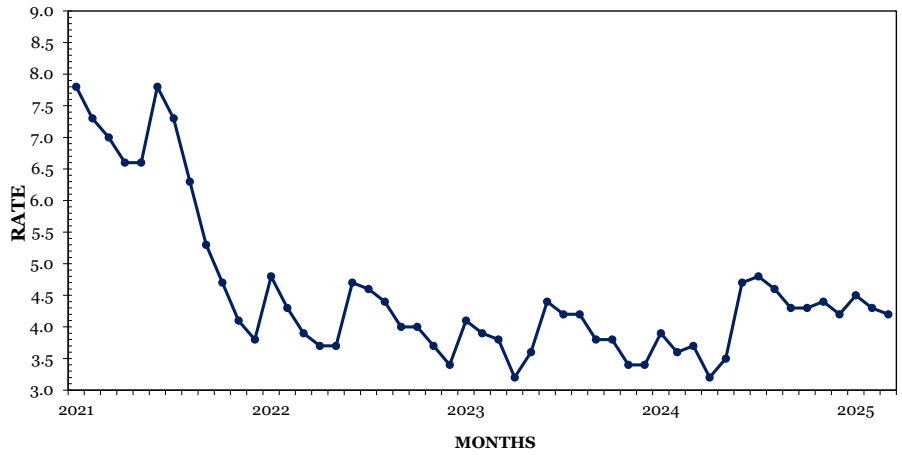
Knoxville MSA: Anderson County, Blount County, Campbell County, Grainger County, Knox County, Loudon County, Morgan County, Roane County, Union County

Memphis MSA

Monthly Employment Changes

Total Nonfarm	+1,200
Leisure & Hospitality	+1,200
Admin, Support & Waste Management	+700
Mining, Logging & Construction	+300
Retail Trade	+300
Professional, Scientific & Technical Svcs.	+200
Private Education & Health Services	-1,100
Transportation, Warehousing & Utilities	-500
Annual Employment Changes	
Total Nonfarm	-7,700
Goods-Producing	-1,800
Service-Providing	-5,900

MEMPHIS MSA UNEMPLOYMENT RATES (NOT SEASONALLY ADJUSTED)



Estimated Nonfarm Employment (in thousands)

Industry	Mar. 2024	Revised Feb. 2025	Preliminary Mar. 2025	Net Change Feb. 2025 - Mar. 2025	Net Change Mar. 2024 - Mar. 2025
Total Nonfarm	661.9	652.7	653.9	1.2	-8.0
Total Private	574.1	564.6	565.6	1.0	-8.5
Goods-Producing	66.3	64.2	64.4	0.2	-1.9
Mining, Logging, & Construction	25.1	24.0	24.3	0.3	-0.8
Manufacturing	41.2	40.2	40.1	-0.1	-1.1
Durable Goods Manufacturing	24.0	23.7	23.7	0.0	-0.3
Nondurable Goods Manufacturing	17.2	16.5	16.4	-0.1	-0.8
Service-Providing	595.6	588.5	589.5	1.0	-6.1
Trade, Transportation, & Utilities	192.5	188.9	188.8	-0.1	-3.7
Wholesale Trade	38.6	39.2	39.3	0.1	0.7
Retail Trade	61.5	60.7	61.0	0.3	-0.5
Transportation, Warehousing, & Utilities	92.4	89.0	88.5	-0.5	-3.9
Information	5.4	5.1	5.1	0.0	-0.3
Financial Activities	29.6	30.1	29.9	-0.2	0.3
Professional & Business Services	89.5	87.7	88.7	1.0	-0.8
Professional, Scientific, & Technical Services	28.1	29.3	29.5	0.2	1.4
Management of Companies & Enterprises	9.7	9.6	9.7	0.1	0.0
Administrative, Support, & Waste Management	51.7	48.8	49.5	0.7	-2.2
Private Education & Health Services	100.6	100.1	99.0	-1.1	-1.6
Leisure & Hospitality	62.2	60.3	61.5	1.2	-0.7
Other Services	28.0	28.2	28.2	0.0	0.2
Government	87.8	88.1	88.3	0.2	0.5
Federal Government	16.5	16.5	16.4	-0.1	-0.1
State Government	16.3	16.1	16.2	0.1	-0.1
Local Government	55.0	55.5	55.7	0.2	0.7

Memphis MSA: Fayette County, Shelby County, Tipton County, Benton County, MS, DeSoto County, MS, Marshall County, MS, Tate County, MS, Tunica County, MS, Crittenden County, AR



Nashville MSA

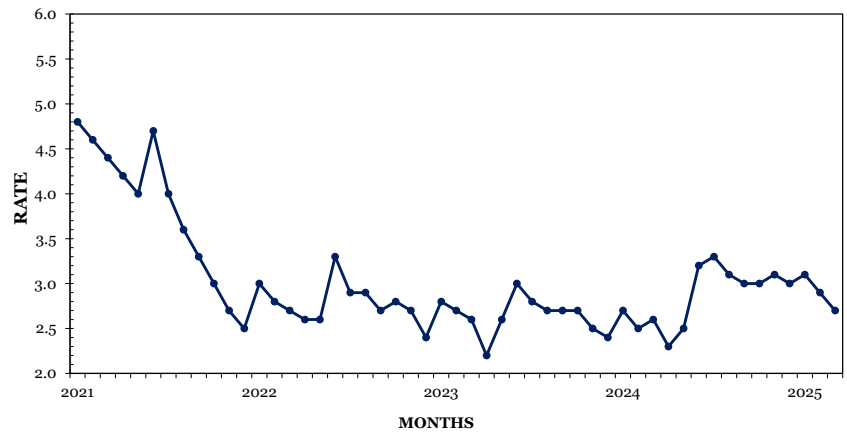
Monthly Employment Changes

Total Nonfarm	+6,000
Leisure & Hospitality	+3,800
Professional & Business Services	+2,300
Professional, Scientific & Technical Svcs.	+1,200
Local Government	+1,000
Manufacturing	-500
Private Education & health Services	-500
Financial Activities	-400

Annual Employment Changes

Total Nonfarm	+5,000
Goods-Producing	-1,600
Service-Providing	+6,600

NASHVILLE MSA UNEMPLOYMENT RATES (NOT SEASONALLY ADJUSTED)



Estimated Nonfarm Employment (in thousands)

Industry	Mar.	Revised	Preliminary	Net Change	
	2024	Feb. 2025	Mar. 2025	Feb. 2025 Mar. 2025	Mar. 2024 Mar. 2025
Total Nonfarm	1,182.4	1,181.4	1,187.4	6.0	5.0
Total Private	1,050.0	1,045.9	1,050.8	4.9	0.8
Goods-Producing	154.0	152.9	152.4	-0.5	-1.6
Mining, Logging, & Construction	64.8	63.6	63.8	0.2	-1.0
Manufacturing	89.2	89.3	88.6	-0.7	-0.6
Durable Goods Manufacturing	63.4	64.5	64.0	-0.5	0.6
Nondurable Goods Manufacturing	25.8	24.8	24.6	-0.2	-1.2
Service-Providing	1,028.4	1,028.5	1,035.0	6.5	6.6
Trade, Transportation, & Utilities	226.1	230.8	230.9	0.1	4.8
Wholesale Trade	50.1	50.5	50.4	-0.1	0.3
Retail Trade	105.6	107.3	107.3	0.0	1.7
Transportation, Warehousing, & Utilities	70.4	73.0	73.2	0.2	2.8
Information	31.7	31.2	31.0	-0.2	-0.7
Financial Activities	80.9	80.4	80.0	-0.4	-0.9
Professional & Business Services	196.9	189.2	191.5	2.3	-5.4
Professional, Scientific, & Technical Services	84.4	84.1	85.3	1.2	0.9
Management of Companies & Enterprises	31.1	30.4	30.6	0.2	-0.5
Administrative, Support, & Waste Management	81.4	74.7	75.6	0.9	-5.8
Private Education & Health Services	178.3	180.8	180.3	-0.5	2.0
Private Educational Services	33.7	34.1	33.8	-0.3	0.1
Health Care & Social Assistance	144.6	146.7	146.5	-0.2	1.9
Leisure & Hospitality	132.4	130.0	133.8	3.8	1.4
Other Services	49.7	50.6	50.9	0.3	1.2
Government	132.4	135.5	136.6	1.1	4.2
Federal Government	16.6	16.5	16.5	0.0	-0.1
State Government	31.9	32.6	32.7	0.1	0.8
Local Government	83.9	86.4	87.4	1.0	3.5

Nashville MSA: Cannon County, Cheatham County, Davidson County, Dickson County, Hickman County, Macon County, Maury County, Robertson County, Rutherford County, Smith County, Sumner County, Trousdale County, Williamson County, Wilson County



Nonfarm Employment (Smaller MSAs)

	Clarksville, TN-KY MSA		Cleveland, TN MSA		Jackson, TN MSA	
	Feb. 2025 Revised	Mar. 2025 Prelim.	Feb. 2025 Revised	Mar. 2025 Prelim.	Feb. 2025 Revised	Mar. 2025 Prelim.
Total Nonfarm	107,900	108,400	46,600	46,800	88,300	88,700
Total Private	85,500	85,800	41,000	41,100	71,000	71,300
Goods Producing	18,800	18,900	10,100	10,100	19,200	19,300
Mining, Logging & Construction	4,800	4,900	2,200	2,200	4,200	4,300
Manufacturing	14,000	14,000	7,900	7,900	15,000	15,000
Service Providing	89,100	89,500	36,500	36,700	69,100	69,400
Trade, Transportation, & Utilities	21,200	21,100	10,200	10,100	16,700	16,800
Wholesale Trade	2,500	2,500	1,300	1,300	3,500	3,500
Retail Trade	14,000	14,000	5,700	5,700	9,700	9,800
Transportation, Warehousing, & Utilities	4,700	4,600	3,200	3,100	3,500	3,500
Information	1,400	1,400	400	400	700	700
Financial Activities	4,100	4,100	1,500	1,500	3,400	3,300
Professional & Business Services	9,100	9,200	4,000	4,000	7,000	7,100
Private Educational & Health Services	14,400	14,300	7,300	7,300	13,500	13,500
Leisure & Hospitality	12,800	13,100	5,000	5,200	7,700	7,800
Other Services	3,700	3,700	2,500	2,500	2,800	2,800
Government	22,400	22,600	5,600	5,700	17,300	17,400
Federal Government	5,700	5,700	400	400	700	700
State Government	3,400	3,500	700	700	1,900	1,900
Local Government	13,300	13,400	4,500	4,600	14,700	14,800

	Johnson City, TN MSA		Kingsport-Bristol, TN-VA MSA		Morristown, TN MSA	
	Feb. 2025 Revised	Mar. 2025 Prelim.	Feb. 2025 Revised	Mar. 2025 Prelim.	Feb. 2025 Revised	Mar. 2025 Prelim.
Total Nonfarm	87,300	87,600	125,500	126,200	51,100	51,300
Total Private	69,100	69,200	109,000	109,400	43,900	43,900
Goods Producing	11,600	11,500	27,700	27,800	14,900	14,900
Mining, Logging & Construction	3,100	3,100	6,800	7,000	2,400	2,400
Manufacturing	8,500	8,400	20,900	20,800	12,500	12,500
Service Providing	75,700	76,100	97,800	98,400	36,200	36,400
Trade, Transportation, & Utilities	14,700	14,800	24,100	24,100	10,100	10,000
Wholesale Trade	3,000	3,000	3,500	3,500	1,400	1,300
Retail Trade	10,600	10,700	15,700	15,700	6,100	6,100
Transportation, Warehousing, & Utilities	1,100	1,100	4,900	4,900	2,600	2,600
Information	800	800	1,300	1,300	300	300
Financial Activities	3,700	3,600	4,300	4,300	1,100	1,100
Professional & Business Services	9,700	9,700	13,300	13,300	5,000	5,000
Private Educational & Health Services	15,600	15,600	18,800	18,800	6,600	6,600
Leisure & Hospitality	10,100	10,300	13,500	13,800	4,400	4,500
Other Services	2,900	2,900	6,000	6,000	1,500	1,500
Government	18,200	18,400	16,500	16,800	7,200	7,400
Federal Government	3,300	3,400	900	900	300	300
State Government	6,600	6,700	2,600	2,600	1,500	1,500
Local Government	8,300	8,300	13,000	13,300	5,400	5,600

Clarksville MSA is Montgomery County, Stewart County, Christian County, KY, & Trigg County, KY. **Cleveland MSA** is Bradley & Polk counties. **Jackson MSA** is Chester, Crockett, Gibson & Madison counties. **Johnson City MSA** is Carter, Unicoi, & Washington counties. **Kingsport-Bristol MSA** is Hawkins County, Sullivan County, Scott County, VA, Washington County, VA, & Bristol City, VA. **Morristown MSA** is Hamblen & Jefferson counties.

U.S. Consumer Price Index — March 2025

Group	All Urban Consumers			Urban Wage Earners & Clerical Workers		
	Index	Percent Change		Index	Percent Change	
		Monthly	Yearly		Monthly	Yearly
U.S. City Average						
All Items (1982-84=100)	319.799	0.2	2.4	313.250	0.3	2.2
Food and beverages	334.920	0.4	2.9	334.611	0.5	2.8
Housing	343.512	0.3	3.7	339.579	0.4	3.7
Apparel	134.082	1.0	0.3	133.898	1.0	0.0
Transportation	270.061	-0.4	-0.9	274.567	-0.3	-1.0
Medical care	574.739	0.2	2.6	582.440	0.2	2.7
South						
All Items (1982-84=100)	310.183	0.1	1.9	304.308	0.0	1.5
Food and beverages	328.811	0.2	2.5	328.067	0.2	2.3
Housing	321.598	0.4	3.5	322.347	0.4	3.4
Apparel	143.383	1.5	-1.0	142.291	1.0	-1.2
Transportation	269.429	-1.0	-1.9	268.467	-1.1	-2.0
Medical care	540.453	-0.3	2.0	555.589	-0.4	1.8

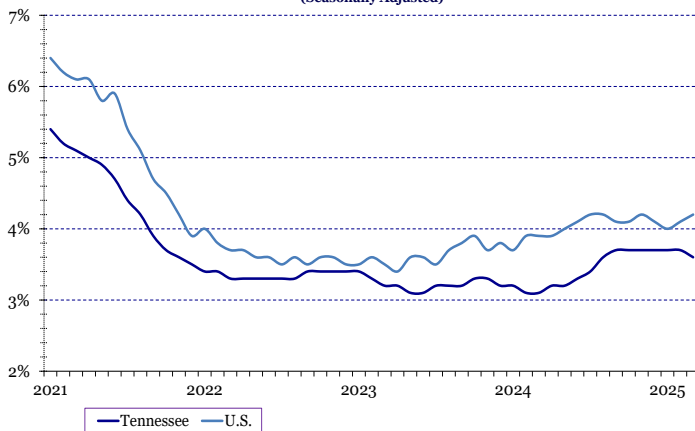
Hours and Earnings Of Production Workers

	Average Weekly Earnings			Average Hourly Earnings			Average Weekly Hours		
	Mar.	Feb.	Mar.	Mar.	Feb.	Mar.	Mar.	Feb.	Mar.
	2024	2025	2025	2024	2025	2025	2024	2025	2025
Manufacturing	\$972.25	\$1,015.98	\$1,001.63	\$24.49	\$24.60	\$24.43	39.7	41.3	41.0
Durable Goods Manufacturing	\$1,059.58	\$1,081.28	\$1,064.30	\$25.97	\$25.93	\$25.77	40.8	41.7	41.3
Non-Durable Goods Manufacturing	\$820.26	\$889.20	\$886.14	\$21.70	\$22.01	\$21.88	37.8	40.4	40.5

All Employee Hours and Earnings

	Average Weekly Earnings			Average Hourly Earnings			Average Weekly Hours		
	Mar.	Feb.	Mar.	Mar.	Feb.	Mar.	Mar.	Feb.	Mar.
	2024	2025	2025	2024	2025	2025	2024	2025	2025
Total Private	\$1,034.41	\$1,078.83	\$1,070.10	\$29.81	\$31.18	\$30.75	34.7	34.6	34.8
Goods-Producing	\$1,228.00	\$1,266.97	\$1,269.14	\$31.01	\$32.57	\$32.13	39.6	38.9	39.5
Mining, Logging & Construction	\$1,287.17	\$1,282.50	\$1,335.69	\$32.26	\$34.20	\$33.56	39.9	37.5	39.8
Manufacturing	\$1,199.34	\$1,258.87	\$1,237.16	\$30.44	\$31.87	\$31.48	39.4	39.5	39.3
Private Service-Providing	\$990.86	\$1,038.97	\$1,027.18	\$29.49	\$30.83	\$30.39	33.6	33.7	33.8
Trade, Transportation, & Utilities	\$915.63	\$872.70	\$882.98	\$27.17	\$26.77	\$26.92	33.7	32.6	32.8
Information	\$1,409.06	\$1,757.60	\$1,779.54	\$37.98	\$44.05	\$44.60	37.1	39.9	39.9
Financial Activities	\$1,441.58	\$1,521.67	\$1,385.86	\$38.34	\$40.47	\$36.47	37.6	37.6	38.0
Professional & Business Services	\$1,318.75	\$1,414.51	\$1,403.14	\$36.13	\$37.62	\$37.12	36.5	37.6	37.8
Private Education & Health Services	\$969.66	\$1,047.25	\$1,030.79	\$28.27	\$30.18	\$30.14	34.3	34.7	34.2
Leisure & Hospitality	\$506.52	\$508.46	\$516.97	\$18.90	\$19.26	\$19.29	26.8	26.4	26.8
Other Services	\$855.75	\$1,037.23	\$1,055.02	\$26.25	\$30.87	\$31.03	32.6	33.6	34.0

TENNESSEE & UNITED STATES
UNEMPLOYMENT RATES
(Seasonally Adjusted)



TENNESSEE & UNITED STATES
LABOR FORCE PARTICIPATION RATES
(Seasonally Adjusted)

