



Tennessee Labor Market Report

Bill Lee
Governor

Deniece Thomas
Commissioner

January
2025

Highlights

Pages 1-2: Information about manufacturing employment in Tennessee

Page 3: Tennessee annual average labor force statistics, and January county unemployment rates

Pages 4-5: Monthly Tennessee nonfarm employment, and MSA and city labor force data

Pages 6-9: Monthly nonfarm employment statistics for the four largest MSA's and graphs of the unemployment rates

Page 10: Monthly nonfarm employment for each small MSA in Tennessee

Page 11: Monthly consumer price index and hours and earnings for all workers by industry and production workers in manufacturing, graphs of Tennessee unemployment and labor force participation rates

Manufacturing Employment in Tennessee 1990-2024

The U.S. economy has been undergoing a decades long shift towards a more service-based economy and away from a goods-producing economy. This is evident in national employment trends which show 35.5 percent of total private sector employment in manufacturing in 1939, the earliest year for which data is available, compared to only 9.5 percent in 2024. These numbers are from the Current Employment Statistics Program, which is a program of the Bureau of Labor Statistics that measures industry employment. Data for states goes back to 1990. The following explores the extent of the employment shift away from manufacturing in Tennessee since 1990.

Manufacturing employment in Tennessee has declined 27 percent from 499,200 jobs in 1990 to 364,600 jobs in 2024. Meanwhile, total private sector employment has increased nearly 58 percent during that time, a net increase of 1,069,600 jobs. Manufacturing accounted for 12.5 percent of all private sector jobs in 2024 compared to 27 percent in 1990. Nondurable goods manufacturing has seen an especially precipitous decline since 1990 losing 111,500 jobs, or 46.2 percent. This accounts for 82.8 percent of the total decline in manufacturing jobs, and its share of total manufacturing employment has declined from 48.3 percent to 35.5 percent.

Across nondurable manufacturing sectors, printing and related support activities is among the largest jobs losers in proportional terms losing 68.5 percent

of its jobs since 1990, a net loss of 17,200 jobs. Paper manufacturing jobs are also down 30.2 percent and chemical manufacturing is down 28.1 percent. Despite these losses, food manufacturing has managed to add 6,100 jobs since 1990, and beverage and tobacco product manufacturing has added another 500 jobs.

Durable goods manufacturing has fared considerably better than nondurables having shed 23,100 jobs, or 8.9 percent of its 1990 total. An addition of 29,200 jobs in transportation equipment manufacturing has helped minimize the losses in durable goods manufacturing, though other sectors have seen substantial losses. Furniture and related product manufacturing has lost 20,000 jobs, or 69 percent. Computer and electronic product manufacturing jobs have declined 55.2 percent while primary metal manufacturing has lost 27.5 percent of its 1990 jobs.

Despite the overall reduction in manufacturing jobs since 1990, jobs have increased 22.7 percent since manufacturing bottomed out at 297,100 jobs in 2010 following the Great Recession. Among the sectors with substantial losses since 1990 only printing and related support activities, paper manufacturing, and furniture and related product manufacturing have seen a net loss in jobs since 2010. Durable goods manufacturing has added 58,400 jobs, a 33 percent increase, owing to a 34,300 job increase in transportation equipment manufacturing.

Private Sector Employment 1990-2024 (in thousands)

Industry	1990		2010		2024		Net Chg 1990-2024	Pct Change 1990-2024
	Jobs	Pct of Total Private	Jobs	Pct of Total Private	Jobs	Pct of Total Private		
Total Private	1851.1	-	2191.8	-	2920.7	-	1069.6	57.8%
Goods Producing	600.6	32.4%	402.4	18.4%	532.9	18.2%	-67.7	-11.3%
Mining, Logging, and Construction	101.3	5.5%	105.3	4.8%	168.3	5.8%	67.0	66.1%
Manufacturing	499.2	27.0%	297.1	13.6%	364.6	12.5%	-134.6	-27.0%
Private Service-Providing	1250.6	67.6%	1789.4	81.6%	2387.8	81.8%	1137.2	90.9%
Wholesale Trade	113.5	6.1%	115.2	5.3%	137.0	4.7%	23.5	20.7%
Retail Trade	265.2	14.3%	305.0	13.9%	345.5	11.8%	80.3	30.3%
Transportation, Warehousing, and Utilities	102.2	5.5%	130.9	6.0%	212.4	7.3%	110.2	107.8%
Information	45.0	2.4%	45.4	2.1%	54.7	1.9%	9.7	21.6%
Finance and Insurance	86.8	4.7%	112.8	5.1%	147.7	5.1%	60.9	70.2%
Real Estate and Rental and Leasing	26.9	1.5%	31.6	1.4%	44.8	1.5%	17.9	66.5%
Professional, Scientific, and Technical Services	69.1	3.7%	108.2	4.9%	178.3	6.1%	109.2	158.0%
Management of Companies and Enterprises	13.9	0.8%	28.0	1.3%	58.1	2.0%	44.2	318.0%
Administrative and Support and Waste Management and Remediation Services	87.6	4.7%	170.5	7.8%	216.8	7.4%	129.2	147.5%
Private Educational Services	27.4	1.5%	47.2	2.2%	68.5	2.3%	41.1	150.0%
Health Care and Social Assistance	189.2	10.2%	331.2	15.1%	424.2	14.5%	235.0	124.2%
Arts, Entertainment, and Recreation	21.1	1.1%	29.5	1.3%	50.5	1.7%	29.4	139.3%
Accommodation and Food Services	156.2	8.4%	232.7	10.6%	317.3	10.9%	161.1	103.1%
Other Services	46.6	2.5%	101.2	4.6%	132.0	4.5%	85.4	183.3%

Manufacturing Employment 1990-2024 (in thousands)

Industry	1990		2010		2024		Net Chg 1990-2024	Pct Change 1990-2024
	Jobs	Pct of Total Mfg.	Jobs	Pct of Total Mfg.	Jobs	Pct of Total Mfg.		
Manufacturing	499.2	-	297.1	-	364.6	-	-134.6	-27.0%
Durable Goods	258.2	51.7%	176.7	59.5%	235.1	64.5%	-23.1	-8.9%
Wood Product Manufacturing	16.8	3.4%	10.9	3.7%	13.4	3.7%	-3.4	-20.2%
Nonmetallic Mineral Product Manufacturing	14.2	2.8%	11.3	3.8%	15.3	4.2%	1.1	7.7%
Primary Metal Manufacturing	15.3	3.1%	8.9	3.0%	11.1	3.0%	-4.2	-27.5%
Fabricated Metal Product Manufacturing	45.9	9.2%	33.1	11.1%	42.2	11.6%	-3.7	-8.1%
Machinery Manufacturing	30.0	6.0%	24.8	8.3%	24.8	6.8%	-5.2	-17.3%
Computer and Electronic Product Manufacturing	17.0	3.4%	5.6	1.9%	7.6	2.1%	-9.4	-55.3%
Electrical Equipment, Appliance, and Component Manufacturing	25.9	5.2%	16.9	5.7%	21.8	6.0%	-4.1	-15.8%
Transportation Equipment Manufacturing	45.6	9.1%	40.5	13.6%	74.8	20.5%	29.2	64.0%
Furniture and Related Product Manufacturing	29.0	5.8%	9.7	3.3%	9.0	2.5%	-20.0	-69.0%
Miscellaneous Manufacturing	18.7	3.7%	15.0	5.0%	15.2	4.2%	-3.5	-18.7%
Nondurable Goods*	241.0	48.3%	120.4	40.5%	129.5	35.5%	-111.5	-46.3%
Food Manufacturing	35.0	7.0%	32.7	11.0%	41.1	11.3%	6.1	17.4%
Beverage and Tobacco Product Manufacturing	6.5	1.3%	5.0	1.7%	7.0	1.9%	0.5	7.7%
Paper Manufacturing	18.2	3.6%	13.3	4.5%	12.7	3.5%	-5.5	-30.2%
Printing and Related Support Activities	25.1	5.0%	11.5	3.9%	7.9	2.2%	-17.2	-68.5%
Chemical Manufacturing	37.7	7.6%	25.1	8.4%	27.1	7.4%	-10.6	-28.1%
Plastics and Rubber Products Manufacturing	26.0	5.2%	19.9	6.7%	24.7	6.8%	-1.3	-5.0%

*Estimates aren't available for all subsectors

Tennessee Civilian Labor Workforce 1995-Present

County Unemployment Rates*

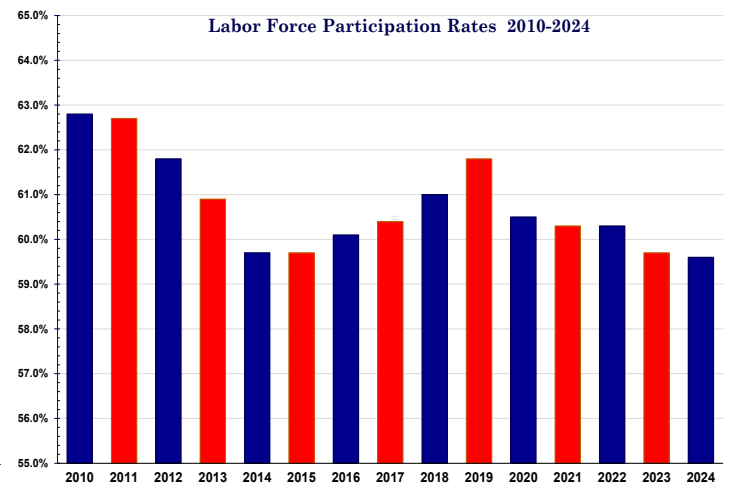
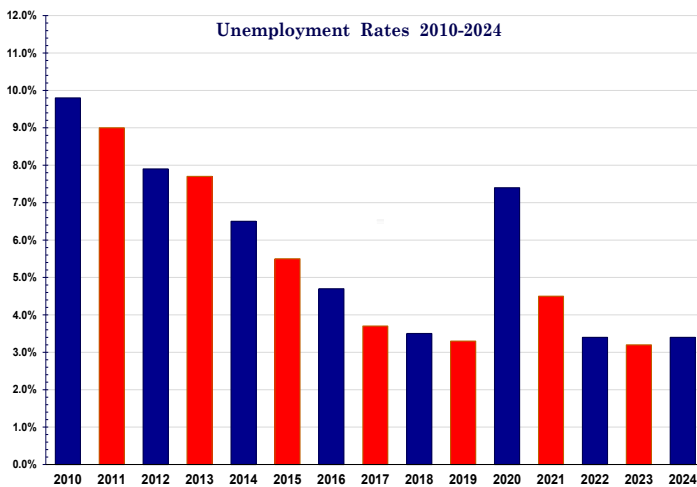
(NUMBERS IN THOUSANDS) MONTHLY DATA NOT SEASONALLY ADJUSTED

Year and Month	Civilian noninstitutional population	Civilian Labor Force					
		Total	Participation Rate (%)	Employed		Unemployed	
				Total	Rate (%)	Total	Rate (%)
1995	4,074.0	2,719.0	66.7%	2,579.8	63.3%	139.3	5.1%
1996	4,148.2	2,758.8	66.5%	2,615.2	63.0%	143.6	5.2%
1997	4,216.7	2,775.2	65.8%	2,630.3	62.4%	145.0	5.2%
1998	4,270.1	2,804.4	65.7%	2,683.0	62.8%	121.4	4.3%
1999	4,314.7	2,835.9	65.7%	2,723.6	63.1%	112.3	4.0%
2000	4,357.9	2,845.3	65.3%	2,736.0	62.8%	109.3	3.8%
2001	4,402.5	2,858.1	64.9%	2,726.6	61.9%	131.5	4.6%
2002	4,447.3	2,898.3	65.2%	2,748.6	61.8%	149.8	5.2%
2003	4,495.8	2,907.1	64.7%	2,746.0	61.1%	161.0	5.5%
2004	4,546.2	2,899.8	63.8%	2,745.2	60.4%	154.6	5.3%
2005	4,616.0	2,899.8	62.8%	2,740.4	59.4%	159.5	5.5%
2006	4,699.5	3,015.6	64.2%	2,858.7	60.8%	156.9	5.2%
2007	4,768.4	3,047.7	63.9%	2,906.1	60.9%	141.6	4.6%
2008	4,831.3	3,067.9	63.5%	2,869.5	59.4%	198.4	6.5%
2009	4,879.4	3,050.4	62.5%	2,733.2	56.0%	317.2	10.4%
2010	4,928.4	3,094.8	62.8%	2,791.6	56.6%	303.2	9.8%
2011	4,973.9	3,119.2	62.7%	2,837.1	57.0%	282.2	9.0%
2012	5,021.2	3,102.5	61.8%	2,856.5	56.9%	246.0	7.9%
2013	5,065.8	3,086.0	60.9%	2,849.5	56.3%	236.4	7.7%
2014	5,111.4	3,052.6	59.7%	2,852.7	55.8%	199.9	6.5%
2015	5,161.2	3,078.8	59.7%	2,908.0	56.3%	170.9	5.5%
2016	5,216.3	3,135.2	60.1%	2,987.2	57.3%	148.0	4.7%
2017	5,274.9	3,187.8	60.4%	3,068.3	58.2%	119.5	3.7%
2018	5,331.4	3,250.0	61.0%	3,137.0	58.8%	113.1	3.5%
2019	5,384.7	3,329.4	61.8%	3,218.1	59.8%	111.4	3.3%
2020	5,443.9	3,294.8	60.5%	3,049.5	56.0%	245.3	7.4%
2021	5,498.3	3,316.9	60.3%	3,168.6	57.6%	148.3	4.5%
2022	5,578.0	3,361.7	60.3%	3,248.3	58.2%	113.4	3.4%
2023	5,661.6	3,380.1	59.7%	3,270.6	57.8%	109.5	3.2%
2024	5,739.4	3,420.4	59.6%	3,303.0	57.5%	117.4	3.4%
2025							
January (p)	5,777.8	3,431.2	59.4%	3,300.5	57.1%	130.7	3.8%
February							
March							
April							
May							
June							
July							
August							
September							
October							
November							
December							

(r)=revised
(p)=preliminary

County	Jan.	Jan.	County	Jan.	Jan.
	2024	2025		2024	2025
Anderson	3.3	3.7	Lauderdale	5.3	5.4
Bedford	2.8	3.2	Lawrence	3.4	4.3
Benton	4.5	5.2	Lewis	3.1	4.0
Bledsoe	3.1	3.6	Lincoln	3.0	3.8
Blount	3.1	3.4	Loudon	4.2	3.6
Bradley	3.4	4.1	Macon	2.5	3.0
Campbell	3.8	4.2	Madison	3.6	4.4
Cannon	2.7	3.3	Marion	4.0	4.6
Carroll	4.1	4.6	Marshall	3.1	3.6
Carter	3.7	4.6	Maury	2.7	3.3
Cheatham	2.7	3.2	McMinn	4.3	4.7
Chester	3.8	4.3	McNairy	3.6	4.7
Claiborne	4.0	4.4	Meigs	5.6	5.8
Clay	4.4	4.9	Monroe	4.7	4.4
Cocke	5.4	7.0	Montgomery	3.4	3.9
Coffee	3.2	3.7	Moore	3.3	3.7
Crockett	3.7	4.1	Morgan	4.3	4.4
Cumberland	5.2	5.4	Obion	3.6	4.0
Davidson	2.7	3.2	Overton	3.7	4.1
Decatur	4.7	5.5	Perry	5.9	7.6
DeKalb	4.0	4.3	Pickett	6.0	7.0
Dickson	2.6	3.4	Polk	3.7	4.1
Dyer	3.5	3.8	Putnam	3.4	3.7
Fayette	3.3	3.9	Rhea	4.1	4.7
Fentress	3.6	3.9	Roane	3.9	4.2
Franklin	3.7	4.0	Robertson	2.7	3.1
Gibson	3.6	4.0	Rutherford	2.6	3.0
Giles	3.5	4.4	Scott	3.9	4.1
Grainger	3.4	4.2	Sequatchie	3.8	4.6
Greene	4.6	4.9	Sevier	4.7	5.2
Grundy	4.1	4.9	Shelby	4.2	4.9
Hamblen	3.7	4.0	Smith	3.2	3.4
Hamilton	3.1	3.5	Stewart	3.6	4.2
Hancock	4.5	4.6	Sullivan	3.5	3.9
Hardeman	4.6	5.5	Sumner	2.7	3.2
Hardin	3.6	4.1	Tipton	3.6	4.1
Hawkins	4.1	4.5	Trousdale	3.0	3.3
Haywood	3.0	3.9	Unicoi	4.3	5.9
Henderson	3.8	4.4	Union	3.5	4.1
Henry	4.2	4.5	Van Buren	3.4	4.2
Hickman	2.8	3.6	Warren	3.3	4.0
Houston	4.6	4.8	Washington	3.1	3.5
Humphreys	3.8	4.3	Wayne	3.9	4.5
Jackson	4.1	4.7	Weakley	3.7	4.5
Jefferson	4.0	4.4	White	3.8	4.7
Johnson	4.5	6.3	Williamson	2.5	2.8
Knox	2.9	3.3	Wilson	2.7	3.1
Lake	4.1	5.0			

*Data Not Seasonally Adjusted



Statewide

Estimated Nonfarm Employment (in thousands)

Industry	Jan. 2024	Revised Dec. 2024	Preliminary Jan. 2025	Net Change	
				Dec. 2024 Jan. 2025	Jan. 2024 Jan. 2025
Total Nonfarm	3316.1	3,415.0	3,335.6	-79.4	19.5
Total Private	2869.5	2,946.6	2,878.3	-68.3	8.8
Goods Producing	524.0	535.0	531.3	-3.7	7.3
Mining, Logging & Construction	160.5	169.5	166.5	-3.0	6.0
Mining & Logging	4.3	4.5	4.5	0.0	0.2
Construction	156.2	165.0	162.0	-3.0	5.8
Construction of Buildings	32.8	34.4	33.7	-0.7	0.9
Heavy and Civil Engineering	20.7	23.9	23.1	-0.8	2.4
Specialty Trade Contractors	102.7	106.7	105.2	-1.5	2.5
Manufacturing	363.5	365.5	364.8	-0.7	1.3
Durable Goods Manufacturing	233.7	236.8	236.5	-0.3	2.8
Wood Product Manufacturing	13.5	13.3	13.2	-0.1	-0.3
Nonmetallic Mineral Product Manufacturing	15.2	15.4	15.4	0.0	0.2
Primary Metal Manufacturing	11.0	11.2	11.2	0.0	0.2
Fabricated Metal Product Manufacturing	41.5	42.8	42.8	0.0	1.3
Machinery Manufacturing	24.7	25.1	25.0	-0.1	0.3
Computer & Electronic Product Manufacturing	7.6	7.8	7.8	0.0	0.2
Electrical Equipment & Appliance Manufacturing	21.1	22.2	22.2	0.0	1.1
Transportation Equipment Manufacturing	75.1	74.7	74.6	-0.1	-0.5
Furniture & Related Product Manufacturing	8.7	9.1	9.1	0.0	0.4
Miscellaneous Manufacturing	15.3	15.2	15.2	0.0	-0.1
Nondurable Goods Manufacturing	129.8	128.7	128.3	-0.4	-1.5
Food Manufacturing	40.8	41.0	40.7	-0.3	-0.1
Beverage & Tobacco Product Manufacturing	7.0	6.9	6.8	-0.1	-0.2
Paper Manufacturing	12.8	12.4	12.5	0.1	-0.3
Printing & Related Support Activities	8.0	7.7	7.7	0.0	-0.3
Chemical Manufacturing	27.0	27.0	26.9	-0.1	-0.1
Plastics & Rubber Products Manufacturing	25.0	24.0	24.0	0.0	-1.0
Service Providing	2792.1	2,880.0	2,804.3	-75.7	12.2
Trade, Transportation, & Utilities	690.3	712.2	693.9	-18.3	3.6
Wholesale Trade	135.6	138.2	138.2	0.0	2.6
Merchant Wholesalers, Durable Goods	80.2	81.4	81.7	0.3	1.5
Merchant Wholesalers, Nondurable Goods	48.4	49.8	49.5	-0.3	1.1
Wholesale Trade Agents & Brokers	7.0	7.0	7.0	0.0	0.0
Retail Trade	343.0	353.7	344.8	-8.9	1.8
Motor Vehicle & Parts Dealers	48.2	47.3	48.0	0.7	-0.2
Building Material, Garden Equipment, & Supplies	33.0	34.0	32.5	-1.5	-0.5
Food & Beverage Retailers	60.2	61.7	60.7	-1.0	0.5
Furniture, Home Furnishings, Electronics, & Appliance	18.4	18.9	18.1	-0.8	-0.3
General Merchandise Retailers	77.9	82.3	79.6	-2.7	1.7
Health & Personal Care Retailers	24.5	24.1	23.4	-0.7	-1.1
Gasoline Stations & Fuel Dealers	25.9	26.4	25.8	-0.6	-0.1
Clothing, Clothing Accessories, Shoe & Jewelry Retail	23.0	24.7	23.3	-1.4	0.3
Sporting Goods, Hobby, Music, & Book Retailers	31.9	34.3	33.4	-0.9	1.5
Transportation, Warehousing, & Utilities	211.7	220.3	210.9	-9.4	-0.8
Utilities	4.4	4.5	4.4	-0.1	0.0
Transportation & Warehousing	207.3	215.8	206.5	-9.3	-0.8
Truck Transportation	56.2	57.0	54.7	-2.3	-1.5
Information	54.9	55.2	53.1	-2.1	-1.8
Financial Activities	190.8	193.8	191.0	-2.8	0.2
Finance & Insurance	146.6	149.3	147.9	-1.4	1.3
Real Estate, Rental, & Leasing	44.2	44.5	43.1	-1.4	-1.1
Professional & Business Services	447.9	451.3	441.6	-9.7	-6.3
Professional, Scientific, & Technical Services	176.2	180.2	178.6	-1.6	2.4
Management of Companies & Enterprises	57.5	58.3	57.8	-0.5	0.3
Administrative, Support, & Waste Management	214.2	212.8	205.2	-7.6	-9.0
Private Educational & Health Services	482.8	500.4	483.5	-16.9	0.7
Private Educational Services	68.1	70.1	65.0	-5.1	-3.1
Health Care & Social Assistance	414.7	430.3	418.5	-11.8	3.8
Ambulatory Health Care Services	173.3	178.6	172.0	-6.6	-1.3
Hospitals	122.9	127.1	124.7	-2.4	1.8
Nursing & Residential Care Facilities	60.8	64.0	62.2	-1.8	1.4
Social Assistance	57.7	60.6	59.6	-1.0	1.9
Leisure & Hospitality	349.5	366.0	351.4	-14.6	1.9
Arts, Entertainment, & Recreation	42.7	47.9	44.6	-3.3	1.9
Accommodation & Food Services	306.8	318.1	306.8	-11.3	0.0
Accommodation	35.7	35.9	35.1	-0.8	-0.6
Food Services & Drinking Places	271.1	282.2	271.7	-10.5	0.6
Other Services	129.3	132.7	132.5	-0.2	3.2
Government	446.6	468.4	457.3	-11.1	10.7
Federal Government	57.4	59.4	59.0	-0.4	1.6
State Government	93.5	104.8	96.3	-8.5	2.8
State Government Educational Services	51.6	62.0	53.4	-8.6	1.8
State Government Excluding Educational Services	41.9	42.8	42.9	0.1	1.0
Local Government	295.7	304.2	302.0	-2.2	6.3
Local Government Educational Services	150.4	154.3	152.7	-1.6	2.3
Local Government Excluding Educational Services	145.3	149.9	149.3	-0.6	4.0

Nonfarm Employment Summary

Monthly Employment Changes

Total Nonfarm	-79,400
Private Educational & Health Services	-16,900
Health Care & Social Assistance	-11,800
Ambulatory Health Care Services	-6,600
Leisure & Hospitality	-14,600
Food Services & Drinking Places	-10,500
Government	-11,100
State Government Education	-8,600
Professional & Business Services	-9,700
Admin, Support & Waste Mgmt. Svcs.	-7,600
Transportation & Warehousing	-9,300
Retail Trade	-8,900
Construction	-3,000
Financial Activities	-2,800
Information	-2,100

Annual Changes

Total Nonfarm	+19,500
Government	10,700
Local Government	+6,300
Local Government exc. Education	+4,000
Construction	+5,800
Health Care & Social Assistance	+3,800
Trade, Transportation & Utilities	+3,600
Durable Goods Manufacturing	+2,800
Admin, Support & Waste Mgmt. Svcs.	-9,000
Private Educational Services	-3,100

Monthly Unemployment Rates Counties

Increased	87
Decreased	2
Unchanged	6
Highest/Lowest Rate	Rate
Williamson County	2.8%
Perry County	7.6%

The data from all the nonfarm employment estimates tables include all full- and part-time nonfarm wage and salary employees who worked during or received pay for any part of the pay period that includes the 12th of the month. This is a count of jobs by place of work. Agricultural workers, proprietors, self-employed persons, workers in private households, and unpaid family workers are excluded. These numbers may not add due to rounding. Data are based on the 2021 benchmark.

Civilian Labor Force

	January 2024				December 2024				January 2025			
	Labor Force	Employed	Unemployed	Rate	Labor Force	Employed	Unemployed	Rate	Labor Force	Employed	Unemployed	Rate
Seasonally Adjusted												
UNITED STATES	167,339,000	161,190,000	6,149,000	3.7	168,547,000	161,661,000	6,886,000	4.1	170,744,000	163,895,000	6,849,000	4.0
TENNESSEE	3,399,403	3,291,618	107,785	3.2	3,436,660	3,308,533	128,127	3.7	3,442,053	3,313,269	128,784	3.7
Not Seasonally Adjusted												
UNITED STATES	166,428,000	159,650,000	6,778,000	4.1	167,746,000	161,294,000	6,452,000	3.8	169,814,000	162,347,000	7,467,000	4.4
TENNESSEE	3,370,765	3,258,349	112,416	3.3	3,435,489	3,313,718	121,771	3.5	3,431,226	3,300,479	130,747	3.8
Metropolitan Statistical Areas												
Chattanooga	286,282	277,367	8,915	3.1	290,866	281,298	9,568	3.3	290,843	280,581	10,262	3.5
Clarksville	136,742	131,288	5,454	4.0	140,416	134,557	5,859	4.2	140,991	134,741	6,250	4.4
Cleveland	55,938	54,001	1,937	3.5	56,341	54,173	2,168	3.8	56,204	53,891	2,313	4.1
Jackson	77,514	74,690	2,824	3.6	78,785	75,643	3,142	4.0	78,837	75,485	3,352	4.3
Johnson City	95,384	92,170	3,214	3.4	97,246	93,546	3,700	3.8	96,966	93,109	3,857	4.0
Kingsport-Bristol	131,438	126,845	4,593	3.5	132,913	128,207	4,706	3.5	133,253	128,004	5,249	3.9
Knoxville	443,112	428,986	14,126	3.2	455,127	440,381	14,746	3.2	453,739	437,927	15,812	3.5
Memphis	619,779	595,611	24,168	3.9	628,042	601,443	26,599	4.2	624,099	595,749	28,350	4.5
Morristown	52,733	50,711	2,022	3.8	54,168	52,302	1,866	3.4	54,290	52,010	2,280	4.2
Nashville-Murfreesboro	1,141,060	1,110,714	30,346	2.7	1,166,588	1,131,896	34,692	3.0	1,163,068	1,126,783	36,285	3.1
Micropolitan Statistical Areas												
Athens	24,912	23,787	1,125	4.5	25,083	23,905	1,178	4.7	25,184	23,952	1,232	4.9
Cookeville	63,359	61,092	2,267	3.6	64,355	62,048	2,307	3.6	64,453	61,879	2,574	4.0
Crossville	23,221	22,013	1,208	5.2	23,494	22,353	1,141	4.9	23,395	22,143	1,252	5.4
Dyersburg	17,518	16,912	606	3.5	18,044	17,401	643	3.6	18,028	17,338	690	3.8
Fayetteville	16,833	16,328	505	3.0	16,832	16,237	595	3.5	16,924	16,286	638	3.8
Greeneville	27,976	26,686	1,290	4.6	28,234	26,839	1,395	4.9	28,354	26,962	1,392	4.9
Lawrenceburg	19,144	18,490	654	3.4	19,541	18,759	782	4.0	19,508	18,674	834	4.3
Lewisburg	16,232	15,725	507	3.1	16,678	16,094	584	3.5	16,661	16,053	608	3.6
Martin	13,831	13,315	516	3.7	14,070	13,507	563	4.0	14,033	13,402	631	4.5
McMinnville	17,314	16,737	577	3.3	17,401	16,730	671	3.9	17,359	16,664	695	4.0
Newport	14,656	13,860	796	5.4	14,888	14,141	747	5.0	15,120	14,064	1,056	7.0
Paris	12,585	12,060	525	4.2	12,965	12,444	521	4.0	13,044	12,462	582	4.5
Sevierville	50,876	48,478	2,398	4.7	51,988	50,446	1,542	3.0	51,862	49,177	2,685	5.2
Shelbyville	25,268	24,555	713	2.8	25,530	24,714	816	3.2	25,633	24,805	828	3.2
Tullahoma-Manchester	29,105	28,183	922	3.2	29,449	28,418	1,031	3.5	29,452	28,374	1,078	3.7
Union City	13,383	12,899	484	3.6	13,636	13,134	502	3.7	13,721	13,173	548	4.0
Winchester	18,140	17,468	672	3.7	18,241	17,529	712	3.9	18,296	17,573	723	4.0
Cities												
Bartlett	27,159	26,289	870	3.2	27,463	26,417	1,046	3.8	27,334	26,300	1,034	3.8
Brentwood	22,058	21,474	584	2.6	22,518	21,890	628	2.8	22,397	21,768	629	2.8
Bristol	12,180	11,778	402	3.3	12,387	11,954	433	3.5	12,429	11,959	470	3.8
Chattanooga	94,726	91,499	3,227	3.4	96,483	93,080	3,403	3.5	96,679	92,942	3,737	3.9
Clarksville	74,660	71,936	2,724	3.6	76,875	73,885	2,990	3.9	76,920	73,789	3,131	4.1
Cleveland	21,043	20,286	757	3.6	21,231	20,352	879	4.1	21,173	20,247	926	4.4
Collierville	24,646	23,915	731	3.0	24,784	24,032	752	3.0	24,708	23,925	783	3.2
Columbia	23,727	23,003	724	3.1	24,255	23,441	814	3.4	24,203	23,347	856	3.5
Cookeville	16,316	15,745	571	3.5	16,493	15,921	572	3.5	16,470	15,858	612	3.7
Farragut	12,498	12,191	307	2.5	12,860	12,517	343	2.7	12,820	12,453	367	2.9
Franklin	48,230	47,050	1,180	2.4	49,313	47,961	1,352	2.7	49,136	47,695	1,441	2.9
Gallatin	25,979	25,207	772	3.0	26,519	25,686	833	3.1	26,446	25,572	874	3.3
Germantown	18,134	17,592	542	3.0	18,223	17,678	545	3.0	18,219	17,599	620	3.4
Hendersonville	34,943	34,096	847	2.4	35,798	34,743	1,055	2.9	35,731	34,588	1,143	3.2
Jackson	28,897	27,755	1,142	4.0	29,409	28,112	1,297	4.4	29,431	28,090	1,341	4.6
Johnson City	35,298	34,233	1,065	3.0	35,945	34,746	1,199	3.3	35,838	34,583	1,255	3.5
Kingsport	23,300	22,498	802	3.4	23,798	22,835	963	4.0	23,857	22,844	1,013	4.2
Knoxville	98,832	95,682	3,150	3.2	101,510	98,238	3,272	3.2	101,251	97,739	3,512	3.5
LaVergne	21,651	21,104	547	2.5	22,173	21,503	670	3.0	22,085	21,418	667	3.0
Lebanon	24,481	23,791	690	2.8	25,004	24,242	762	3.0	24,972	24,162	810	3.2
Maryville	15,400	14,960	440	2.9	15,862	15,356	506	3.2	15,788	15,270	518	3.3
Memphis	281,172	268,086	13,086	4.7	283,511	269,394	14,117	5.0	283,317	268,200	15,117	5.3
Morristown	12,371	11,910	461	3.7	12,753	12,286	467	3.7	12,743	12,226	517	4.1
Mount Juliet	22,967	22,389	578	2.5	23,470	22,814	656	2.8	23,396	22,738	658	2.8
Murfreesboro	94,425	91,852	2,573	2.7	96,549	93,588	2,961	3.1	96,243	93,219	3,024	3.1
Nashville	409,196	398,153	11,043	2.7	418,392	405,813	12,579	3.0	417,304	404,034	13,270	3.2
Oak Ridge	14,268	13,793	475	3.3	14,682	14,162	520	3.5	14,630	14,085	545	3.7
Shelbyville	12,439	12,090	349	2.8	12,569	12,168	401	3.2	12,623	12,213	410	3.2
Smyrna	31,634	30,841	793	2.5	32,401	31,423	978	3.0	32,239	31,300	939	2.9
Spring Hill	31,515	30,788	727	2.3	32,200	31,380	820	2.5	32,060	31,223	837	2.6

Chattanooga MSA

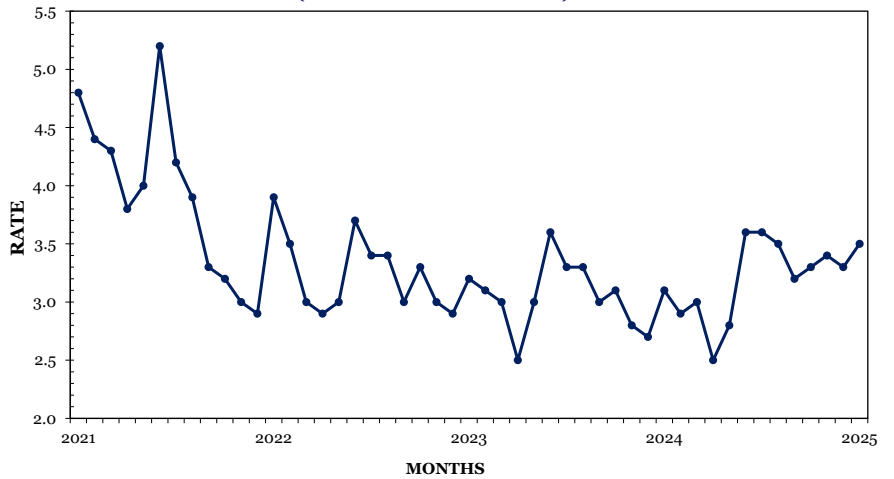
Monthly Employment Changes

Total Nonfarm	-6,100
Professional & Business Services	-1,200
Private Education & Health Services	-1,200
Leisure & Hospitality	-1,000
Retail Trade	-900
Transportation, Warehousing & Utilities	-600
Financial Activities	-400
State Government	-400

Annual Employment Changes

Total Nonfarm	+1,700
Goods-Producing	+600
Service-Providing	+1,100

CHATTANOOGA MSA UNEMPLOYMENT RATES (NOT SEASONALLY ADJUSTED)



Estimated Nonfarm Employment (in thousands)

Industry	Jan. 2024	Revised Dec. 2024	Preliminary Jan. 2025	Net Change	
				Dec. 2024 Jan. 2025	Jan. 2024 Jan. 2025
Total Nonfarm	289.8	297.6	291.5	-6.1	1.7
Total Private	257.2	264.7	259.0	-5.7	1.8
Goods-Producing	54.6	55.5	55.2	-0.3	0.6
Mining, Logging, & Construction	14.0	14.7	14.6	-0.1	0.6
Manufacturing	40.6	40.8	40.6	-0.2	0.0
Durable Goods Manufacturing	26.0	26.5	26.4	-0.1	0.4
Nondurable Goods Manufacturing	14.6	14.3	14.2	-0.1	-0.4
Service-Providing	235.2	242.1	236.3	-5.8	1.1
Trade, Transportation, & Utilities	54.4	56.6	55.1	-1.5	0.7
Wholesale Trade	8.8	9.0	9.0	0.0	0.2
Retail Trade	28.6	30.0	29.1	-0.9	0.5
Transportation, Warehousing, & Utilities	17.0	17.6	17.0	-0.6	0.0
Information	3.5	3.4	3.3	-0.1	-0.2
Financial Activities	27.8	29.0	28.6	-0.4	0.8
Professional & Business Services	30.5	30.7	29.5	-1.2	-1.0
Private Education & Health Services	43.6	45.3	44.1	-1.2	0.5
Leisure & Hospitality	30.1	30.9	29.9	-1.0	-0.2
Other Services	12.7	13.3	13.3	0.0	0.6
Government	32.6	32.9	32.5	-0.4	-0.1
Federal Government	6.2	6.3	6.3	0.0	0.1
State Government	6.3	6.8	6.4	-0.4	0.1
Local Government	20.1	19.8	19.8	0.0	-0.3

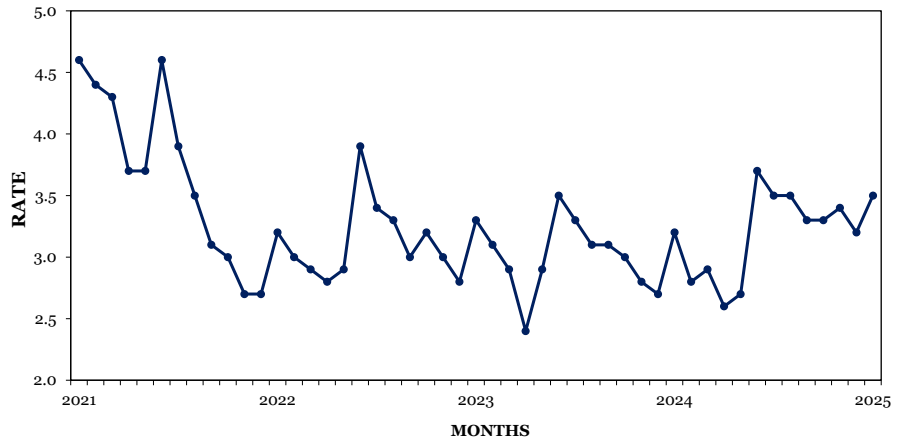
Chattanooga MSA: Hamilton County, Marion County, Sequatchie County, Catoosa County, GA, Dade County, GA, & Walker County, GA

Knoxville MSA

Monthly Employment Changes

Total Nonfarm	-11,600
Leisure & Hospitality	-2,500
Private Educational & Health Services	-1,900
Government	-1,800
State Government	-1,300
Professional & Business Services	-1,700
Retail Trade	-1,400
Transportation, Warehousing & Utilities	-1,200
Annual Employment Changes	
Total Nonfarm	+4,900
Goods-Producing	+500
Service-Providing	+4,400

KNOXVILLE MSA UNEMPLOYMENT RATES (NOT SEASONALLY ADJUSTED)



Estimated Nonfarm Employment (in thousands)

Industry	Jan.	Revised	Preliminary	Net Change	
	Jan. 2024	Dec. 2024	Jan. 2025	Dec. 2024 Jan. 2025	Jan. 2024 Jan. 2025
Total Nonfarm	440.5	457.0	445.4	-11.6	4.9
Total Private	380.4	394.3	384.5	-9.8	4.1
Goods-Producing	67.2	68.3	67.7	-0.6	0.5
Mining, Logging, & Construction	21.5	22.9	22.6	-0.3	1.1
Manufacturing	45.7	45.4	45.1	-0.3	-0.6
Durable Goods Manufacturing	34.5	34.7	34.5	-0.2	0.0
Nondurable Goods Manufacturing	11.2	10.7	10.6	-0.1	-0.6
Service-Providing	373.3	388.7	377.7	-11.0	4.4
Trade, Transportation, & Utilities	88.3	93.3	90.8	-2.5	2.5
Wholesale Trade	19.4	20.0	20.1	0.1	0.7
Retail Trade	50.8	52.8	51.4	-1.4	0.6
Transportation, Warehousing, & Utilities	18.1	20.5	19.3	-1.2	1.2
Information	6.6	6.2	6.0	-0.2	-0.6
Financial Activities	24.0	24.2	23.8	-0.4	-0.2
Professional & Business Services	71.4	72.0	70.3	-1.7	-1.1
Private Education & Health Services	60.6	64.7	62.8	-1.9	2.2
Leisure & Hospitality	45.6	48.2	45.7	-2.5	0.1
Other Services	16.7	17.4	17.4	0.0	0.7
Government	60.1	62.7	60.9	-1.8	0.8
Federal Government	5.7	5.8	5.7	-0.1	0.0
State Government	18.0	20.2	18.9	-1.3	0.9
Local Government	36.4	36.7	36.3	-0.4	-0.1

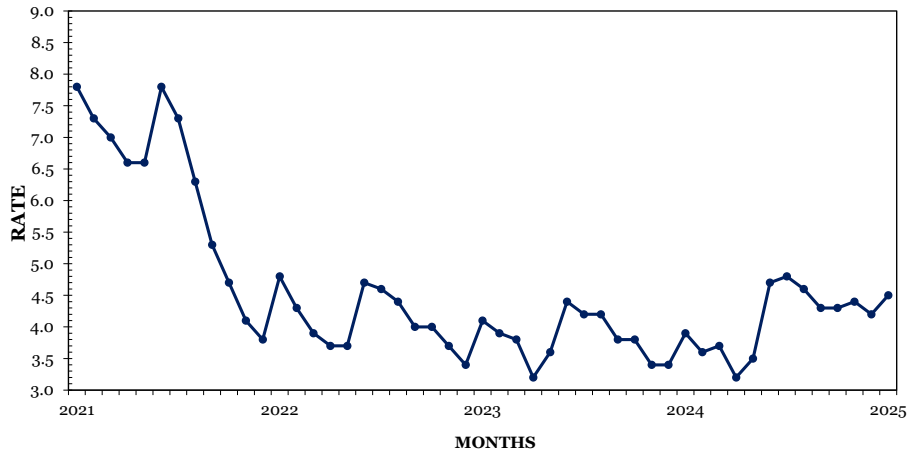
Knoxville MSA: Anderson County, Blount County, Campbell County, Grainger County, Knox County, Loudon County, Morgan County, Rane County, Union County

Memphis MSA

Monthly Employment Changes

Total Nonfarm	-15,900
Transportation, Warehousing & Utilities	-4,000
Private Education & Health Services	-3,200
Leisure & Hospitality	-2,500
Admin, Support & Waste Mgmt. Svcs	-1,900
Retail Trade	-1,600
Government	-1,500
State Government	-1,000
Annual Employment Changes	
Total Nonfarm	-6,700
Goods-Producing	-500
Service-Providing	-6,200

MEMPHIS MSA UNEMPLOYMENT RATES (NOT SEASONALLY ADJUSTED)



Estimated Nonfarm Employment (in thousands)

Industry	Jan. 2024	Revised Dec. 2024	Preliminary Jan. 2025	Net Change Dec. 2024 - Jan. 2025	Net Change Jan. 2024 - Jan. 2025
Total Nonfarm	656.9	666.1	650.2	-15.9	-6.7
Total Private	571.5	578.3	563.9	-14.4	-7.6
Goods-Producing	65.7	66.0	65.2	-0.8	-0.5
Mining, Logging, & Construction	24.5	25.1	24.7	-0.4	0.2
Manufacturing	41.2	40.9	40.5	-0.4	-0.7
Durable Goods Manufacturing	24.0	24.0	23.8	-0.2	-0.2
Nondurable Goods Manufacturing	17.2	16.9	16.7	-0.2	-0.5
Service-Providing	591.2	600.1	585.0	-15.1	-6.2
Trade, Transportation, & Utilities	193.1	195.1	190.0	-5.1	-3.1
Wholesale Trade	38.4	38.7	39.2	0.5	0.8
Retail Trade	62.2	62.4	60.8	-1.6	-1.4
Transportation, Warehousing, & Utilities	92.5	94.0	90.0	-4.0	-2.5
Information	5.4	5.4	5.2	-0.2	-0.2
Financial Activities	29.6	30.3	30.0	-0.3	0.4
Professional & Business Services	89.7	90.2	88.0	-2.2	-1.7
Professional, Scientific, & Technical Services	28.0	29.4	29.1	-0.3	1.1
Management of Companies & Enterprises	9.6	9.5	9.5	0.0	-0.1
Administrative, Support, & Waste Management	52.1	51.3	49.4	-1.9	-2.7
Private Education & Health Services	99.6	101.4	98.2	-3.2	-1.4
Leisure & Hospitality	60.7	61.9	59.4	-2.5	-1.3
Other Services	27.7	28.0	27.9	-0.1	0.2
Government	85.4	87.8	86.3	-1.5	0.9
Federal Government	16.3	16.8	16.6	-0.2	0.3
State Government	15.5	15.9	14.9	-1.0	-0.6
Local Government	53.6	55.1	54.8	-0.3	1.2

Memphis MSA: Fayette County, Shelby County, Tipton County, Benton County, MS, DeSoto County, MS, Marshall County, MS, Tate County, MS, Tunica County, MS, Crittenden County, AR

Nashville MSA

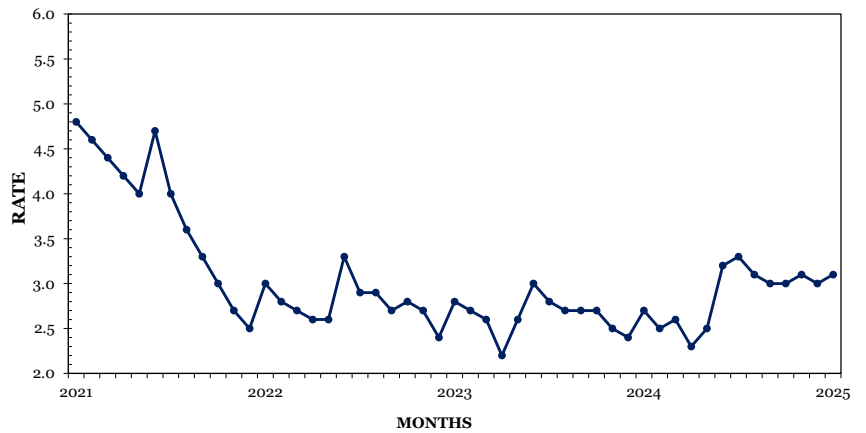
Monthly Employment Changes

Total Nonfarm	-27,600
Leisure & Hospitality	-7,100
Professional & Business Services	-4,800
Admin, Support & Waste Mgmt. Svcs.	-4,000
Transportation, Warehousing & Utilities	-3,200
Private Educational Services	-2,800
Retail Trade	-2,400
Health Care & Social Assistance	-2,400

Annual Employment Changes

Total Nonfarm	+6,400
Goods-Producing	+4,100
Service-Providing	+2,300

NASHVILLE MSA UNEMPLOYMENT RATES (NOT SEASONALLY ADJUSTED)



Estimated Nonfarm Employment (in thousands)

Industry	Jan.	Revised	Preliminary	Net Change	
	2024	Dec. 2024	Jan. 2025	Dec. 2024 Jan. 2025	Jan. 2024 Jan. 2025
Total Nonfarm	1,166.8	1,200.8	1,173.2	-27.6	6.4
Total Private	1,037.5	1,065.8	1,040.0	-25.8	2.5
Goods-Producing	149.7	155.1	153.8	-1.3	4.1
Mining, Logging, & Construction	61.9	66.2	64.9	-1.3	3.0
Manufacturing	87.8	88.9	88.9	0.0	1.1
Durable Goods Manufacturing	62.4	64.0	64.1	0.1	1.7
Nondurable Goods Manufacturing	25.4	24.9	24.8	-0.1	-0.6
Service-Providing	1,017.1	1,045.7	1,019.4	-26.3	2.3
Trade, Transportation, & Utilities	228.1	237.1	231.9	-5.2	3.8
Wholesale Trade	49.5	50.6	51.0	0.4	1.5
Retail Trade	105.8	109.9	107.5	-2.4	1.7
Transportation, Warehousing, & Utilities	72.8	76.6	73.4	-3.2	0.6
Information	31.9	32.2	31.2	-1.0	-0.7
Financial Activities	81.4	81.4	80.2	-1.2	-1.2
Professional & Business Services	194.6	193.4	188.6	-4.8	-6.0
Professional, Scientific, & Technical Services	83.8	84.3	84.0	-0.3	0.2
Management of Companies & Enterprises	30.7	30.9	30.4	-0.5	-0.3
Administrative, Support, & Waste Management	80.1	78.2	74.2	-4.0	-5.9
Private Education & Health Services	175.2	181.6	176.4	-5.2	1.2
Private Educational Services	32.2	33.4	30.6	-2.8	-1.6
Health Care & Social Assistance	143.0	148.2	145.8	-2.4	2.8
Leisure & Hospitality	127.7	134.7	127.6	-7.1	-0.1
Other Services	48.9	50.3	50.3	0.0	1.4
Government	129.3	135.0	133.2	-1.8	3.9
Federal Government	16.5	16.6	16.6	0.0	0.1
State Government	30.0	32.2	30.8	-1.4	0.8
Local Government	82.8	86.2	85.8	-0.4	3.0

Nashville MSA: Cannon County, Cheatham County, Davidson County, Dickson County, Hickman County, Macon County, Maury County, Robertson County, Rutherford County, Smith County, Sumner County, Trousdale County, Williamson County, Wilson County



Nonfarm Employment (Smaller MSAs)

	Clarksville, TN-KY MSA		Cleveland, TN MSA		Jackson, TN MSA	
	Dec. 2024 Revised	Jan. 2025 Prelim.	Dec. 2024 Revised	Jan. 2025 Prelim.	Dec. 2024 Revised	Jan. 2025 Prelim.
Total Nonfarm	109,100	107,100	47,100	46,000	89,200	87,700
Total Private	86,600	84,900	41,400	40,600	71,800	70,500
Goods Producing	19,000	18,900	10,000	10,000	19,400	19,300
Mining, Logging & Construction	4,900	4,900	2,200	2,200	4,400	4,300
Manufacturing	14,100	14,000	7,800	7,800	15,000	15,000
Service Providing	90,100	88,200	37,100	36,000	69,800	68,400
Trade, Transportation, & Utilities	21,800	21,200	10,500	10,200	17,200	16,800
Wholesale Trade	2,500	2,500	1,200	1,300	3,500	3,500
Retail Trade	14,400	14,000	5,900	5,700	10,000	9,700
Transportation, Warehousing, & Utilities	4,900	4,700	3,400	3,200	3,700	3,600
Information	1,400	1,400	400	400	700	700
Financial Activities	4,100	4,100	1,500	1,500	3,400	3,400
Professional & Business Services	9,200	9,000	4,100	3,900	7,100	6,900
Private Educational & Health Services	14,300	14,100	7,200	7,100	13,400	13,100
Leisure & Hospitality	13,200	12,600	5,200	5,000	7,800	7,500
Other Services	3,600	3,600	2,500	2,500	2,800	2,800
Government	22,500	22,200	5,700	5,400	17,400	17,200
Federal Government	5,800	5,700	400	400	700	700
State Government	3,400	3,300	700	500	1,900	1,800
Local Government	13,300	13,200	4,600	4,500	14,800	14,700

	Johnson City, TN MSA		Kingsport-Bristol, TN-VA MSA		Morristown, TN MSA	
	Dec. 2024 Revised	Jan. 2025 Prelim.	Dec. 2024 Revised	Jan. 2025 Prelim.	Dec. 2024 Revised	Jan. 2025 Prelim.
Total Nonfarm	87,700	85,700	126,800	124,300	51,500	50,300
Total Private	69,500	68,300	110,100	108,100	44,300	43,400
Goods Producing	11,600	11,500	27,800	27,800	15,100	14,900
Mining, Logging & Construction	3,200	3,100	7,000	6,900	2,500	2,400
Manufacturing	8,400	8,400	20,800	20,900	12,600	12,500
Service Providing	76,100	74,200	99,000	96,500	36,400	35,400
Trade, Transportation, & Utilities	15,000	14,700	24,700	24,100	10,100	10,000
Wholesale Trade	3,000	3,000	3,500	3,500	1,300	1,400
Retail Trade	10,800	10,600	16,000	15,600	6,100	6,000
Transportation, Warehousing, & Utilities	1,200	1,100	5,200	5,000	2,700	2,600
Information	800	800	1,300	1,300	300	300
Financial Activities	3,700	3,700	4,400	4,300	1,100	1,100
Professional & Business Services	9,800	9,600	13,500	13,100	5,100	4,900
Private Educational & Health Services	15,400	15,200	18,700	18,300	6,600	6,400
Leisure & Hospitality	10,300	9,900	13,800	13,300	4,500	4,300
Other Services	2,900	2,900	5,900	5,900	1,500	1,500
Government	18,200	17,400	16,700	16,200	7,200	6,900
Federal Government	3,400	3,400	1,000	900	300	300
State Government	6,500	5,800	2,600	2,400	1,500	1,200
Local Government	8,300	8,200	13,100	12,900	5,400	5,400

Clarksville MSA is Montgomery County, Stewart County, Christian County, KY, & Trigg County, KY. **Cleveland MSA** is Bradley & Polk counties. **Jackson MSA** is Chester, Crockett, Gibson & Madison counties. **Johnson City MSA** is Carter, Unicoi, & Washington counties. **Kingsport-Bristol MSA** is Hawkins County, Sullivan County, Scott County, VA, Washington County, VA, & Bristol City, VA. **Morristown MSA** is Hamblen & Jefferson counties.

U.S. Consumer Price Index — January 2025

Group	All Urban Consumers			Urban Wage Earners & Clerical Workers		
	Index	Percent Change		Index	Percent Change	
		Monthly	Yearly		Monthly	Yearly
U.S. City Average						
All Items (1982-84=100)	317.671	0.7	3.0	311.172	0.7	3.0
Food and beverages	332.696	0.6	2.4	332.416	0.6	2.4
Housing	340.875	0.6	3.9	336.927	0.6	3.8
Apparel	128.464	0.9	0.4	128.508	1.0	0.6
Transportation	270.384	1.0	3.2	274.380	1.2	3.3
Medical care	571.899	0.5	2.6	580.221	0.4	2.8
South						
All Items (1982-84=100)	308.911	0.6	2.8	303.310	0.7	2.7
Food and beverages	327.036	0.3	2.5	326.410	0.4	2.5
Housing	319.245	0.5	3.6	320.226	0.5	3.5
Apparel	136.315	-0.9	-0.4	136.345	-0.4	0.9
Transportation	271.853	1.5	2.6	270.805	2.0	2.7
Medical care	540.213	0.2	2.3	555.443	0.1	2.1

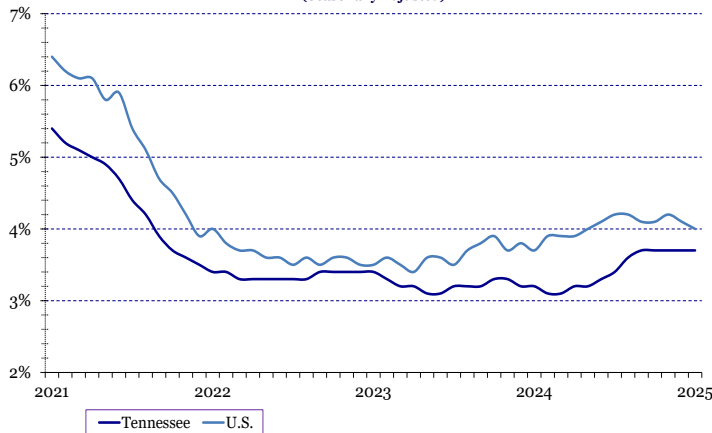
Hours And Earnings Of Production Workers

	Average Weekly Earnings			Average Hourly Earnings			Average Weekly Hours		
	Jan.	Dec.	Jan.	Jan.	Dec.	Jan.	Jan.	Dec.	Jan.
	2024	2024	2025	2024	2024	2025	2024	2024	2025
Manufacturing	\$972.00	\$1,017.06	\$947.39	\$24.30	\$24.39	\$24.23	40.0	41.7	39.1
Durable Goods Manufacturing	\$1,060.67	\$1,083.65	\$999.75	\$25.87	\$25.74	\$25.31	41.0	42.1	39.5
Non-Durable Goods Manufacturing	\$817.86	\$892.44	\$845.28	\$21.41	\$21.82	\$22.07	38.2	40.9	38.3

All Employee Hours And Earnings

	Average Weekly Earnings			Average Hourly Earnings			Average Weekly Hours		
	Jan.	Dec.	Jan.	Jan.	Dec.	Jan.	Jan.	Dec.	Jan.
	2024	2024	2025	2024	2024	2025	2024	2024	2025
Total Private	\$1,032.55	\$1,071.08	\$1,037.50	\$30.28	\$30.69	\$30.97	34.1	34.9	33.5
Goods-Producing	\$1,239.92	\$1,266.44	\$1,213.73	\$31.47	\$31.82	\$31.69	39.4	39.8	38.3
Mining, Logging & Construction	\$1,220.16	\$1,277.35	\$1,249.29	\$32.80	\$32.42	\$33.05	37.2	39.4	37.8
Manufacturing	\$1,246.48	\$1,262.00	\$1,196.58	\$30.93	\$31.55	\$31.08	40.3	40.0	38.5
Private Service-Providing	\$985.68	\$1,027.18	\$996.95	\$29.96	\$30.39	\$30.77	32.9	33.8	32.4
Trade, Transportation, & Utilities	\$917.07	\$879.37	\$854.91	\$27.79	\$26.81	\$27.14	33.0	32.8	31.5
Information	\$1,334.62	\$1,645.06	\$1,571.45	\$36.97	\$42.84	\$41.03	36.1	38.4	38.3
Financial Activities	\$1,418.33	\$1,503.81	\$1,461.59	\$38.23	\$39.47	\$39.29	37.1	38.1	37.2
Professional & Business Services	\$1,313.50	\$1,396.50	\$1,345.68	\$36.69	\$37.24	\$37.80	35.8	37.5	35.6
Private Education & Health Services	\$980.29	\$1,023.62	\$1,025.05	\$28.58	\$29.67	\$30.06	34.3	34.5	34.1
Leisure & Hospitality	\$475.17	\$517.59	\$477.20	\$19.16	\$19.17	\$19.32	24.8	27.0	24.7
Other Services	\$826.18	\$1,008.30	\$972.63	\$26.48	\$29.92	\$30.49	31.2	33.7	31.9

TENNESSEE & UNITED STATES
UNEMPLOYMENT RATES
(Seasonally Adjusted)



TENNESSEE & UNITED STATES
LABOR FORCE PARTICIPATION RATES
(Seasonally Adjusted)

