



Tennessee Labor Market Report

Bill Lee
Governor

Deniece Thomas
Commissioner

February
2025

Highlights

Pages 1-2: Data and information from the Job Openings and Labor Turnover Survey (JOLTS)

Page 3: Tennessee annual average labor force statistics, and February county unemployment rates

Pages 4-5: Monthly Tennessee nonfarm employment, and MSA and city labor force data

Pages 6-9: Monthly nonfarm employment statistics for the four largest MSA's and graphs of the unemployment rates

Page 10: Monthly nonfarm employment for each small MSA in Tennessee

Page 11: Monthly consumer price index and hours and earnings for all workers by industry and production workers in manufacturing, graphs of Tennessee unemployment and labor force participation rates

Job Openings and Labor Turnover Survey

About the Estimates

The Job Openings and Labor Turnover Survey (JOLTS) program produces estimates for all 50 States, and the District of Columbia at the total nonfarm level on job openings, hires, and separations. The JOLTS program also produces national data that includes additional industry data beyond total nonfarm. These estimates are based on a national sample of approximately 21,000 establishments and are useful to better understand the current state of the U.S. economy and the factors contributing to employment changes.

Job openings estimates include all open positions, full or part-time, on the last business day of the reference month. To be considered a job opening, a specific position must exist with work available within 30 days. The employer must also be actively recruiting external workers to fill the position.

Separations include all separations from the payroll during the entire reference month and is reported by type of separation: quits, layoffs and discharges, and other separations. Layoffs and discharges include involuntary separations initiated by the employer including layoffs with no intent to rehire or those expected to last more than 7 days. Separations due to mergers, downsizing, closings, firings; or terminations of short-term and seasonal employees are also counted among layoffs and discharges. Other separations include retirements, transfers to other locations, separations due to employee disability;

and deaths. Hires include all payroll additions for the entire reference month.

JOLTS Data in Tennessee

Preliminary January 2025 JOLTS data showed 171,000 job openings in Tennessee. This represents 10 percent decrease from January 2024. Hires only increased 1.4 percent while total separations increased 34.2 percent since January 2024. Quits represented 70.7 percent of all separations in January 2025, up from 70.1 percent a year earlier, though up sharply from 59.0 percent in December 2024. The quits rate has increased from 2.5 percent of total employment in January 2024 to 3.3 percent in January 2025. The quits rate hasn't exceeded 3.3 percent since November 2022 when it was 3.4 percent.

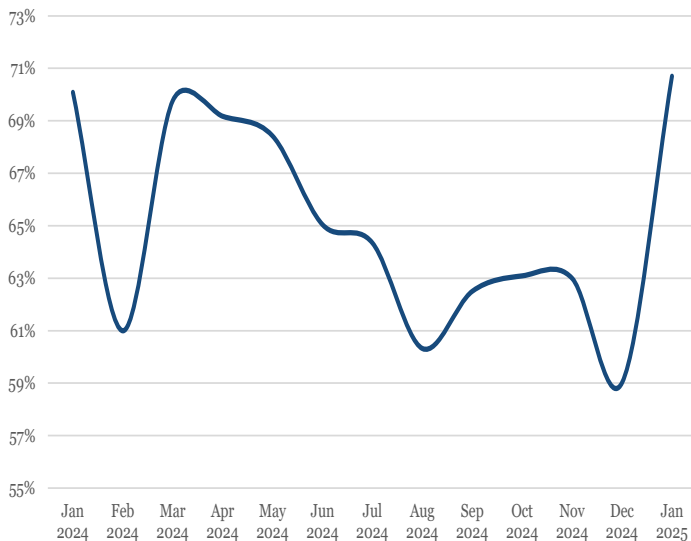
The job openings rate has declined over the year from 5.4 percent in January 2024 to 4.8 percent in January 2025. Despite the dip in job openings, employers are hiring at a similar rate as a year ago. The hires rate has barely changed from 4.3 percent a year ago to 4.2 percent in January 2025. Total layoffs are up 10,000 from a year ago with the rate increasing from 0.8 percent to 1.1 percent.

For more information and additional data the Job Openings and Labor Turnover Survey, visit <https://www.bls.gov/jlt/>

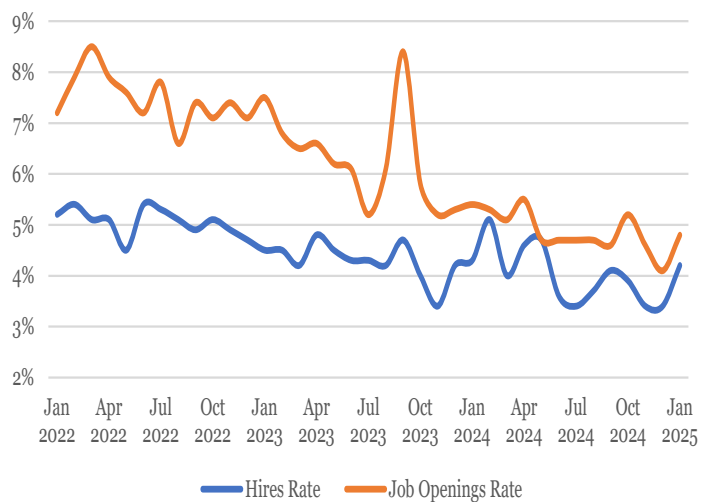
Job Openings and Labor Turnover in Tennessee Seasonally Adjusted (levels in thousands)

Month	Hires Level	Hires Rate	Job Openings Level	Job Openings Rate	Layoff Level	Layoff Rate	Quits Level	Quits Rate	Total Separations Level	Total Separations Rate
January 2022	165	5.2%	249	7.2%	31	1.0%	118	3.7%	157	4.9%
February 2022	174	5.4%	274	7.9%	36	1.1%	116	3.6%	159	4.9%
March 2022	165	5.1%	301	8.5%	43	1.3%	103	3.2%	153	4.8%
April 2022	166	5.1%	279	7.9%	43	1.3%	115	3.6%	164	5.1%
May 2022	146	4.5%	267	7.6%	30	0.9%	105	3.2%	143	4.4%
June 2022	174	5.4%	251	7.2%	38	1.2%	115	3.5%	160	4.9%
July 2022	172	5.3%	277	7.8%	36	1.1%	115	3.5%	157	4.8%
August 2022	166	5.1%	233	6.6%	43	1.3%	113	3.5%	164	5.0%
September 2022	162	4.9%	264	7.4%	31	0.9%	117	3.6%	153	4.7%
October 2022	167	5.1%	250	7.1%	56	1.7%	123	3.8%	185	5.6%
November 2022	160	4.9%	262	7.4%	38	1.2%	113	3.4%	158	4.8%
December 2022	153	4.7%	252	7.1%	38	1.2%	102	3.1%	149	4.5%
January 2023	150	4.5%	268	7.5%	43	1.3%	94	2.8%	141	4.3%
February 2023	148	4.5%	240	6.8%	39	1.2%	108	3.3%	156	4.7%
March 2023	139	4.2%	232	6.5%	68	2.1%	97	2.9%	171	5.2%
April 2023	159	4.8%	233	6.6%	30	0.9%	88	2.7%	126	3.8%
May 2023	148	4.5%	218	6.2%	35	1.1%	111	3.3%	152	4.6%
June 2023	142	4.3%	216	6.1%	29	0.9%	86	2.6%	121	3.6%
July 2023	141	4.3%	180	5.2%	38	1.1%	84	2.5%	128	3.9%
August 2023	139	4.2%	215	6.1%	33	1.0%	93	2.8%	132	4.0%
September 2023	155	4.7%	304	8.4%	40	1.2%	87	2.6%	133	4.0%
October 2023	131	4.0%	203	5.8%	32	1.0%	99	3.0%	138	4.2%
November 2023	112	3.4%	182	5.2%	28	0.9%	73	2.2%	108	3.3%
December 2023	137	4.2%	186	5.3%	32	1.0%	84	2.5%	123	3.7%
January 2024	141	4.3%	190	5.4%	27	0.8%	82	2.5%	117	3.5%
February 2024	170	5.1%	186	5.3%	49	1.5%	86	2.6%	141	4.2%
March 2024	134	4.0%	177	5.1%	32	1.0%	90	2.7%	129	3.9%
April 2024	152	4.6%	195	5.5%	32	1.0%	92	2.8%	133	4.0%
May 2024	157	4.7%	164	4.7%	35	1.1%	91	2.7%	133	4.0%
June 2024	121	3.6%	165	4.7%	37	1.1%	80	2.4%	123	3.7%
July 2024	113	3.4%	166	4.7%	38	1.1%	83	2.5%	129	3.9%
August 2024	125	3.7%	164	4.7%	41	1.2%	76	2.3%	126	3.8%
September 2024	138	4.1%	161	4.6%	43	1.3%	80	2.4%	128	3.8%
October 2024	132	3.9%	182	5.2%	48	1.4%	94	2.8%	149	4.5%
November 2024	115	3.4%	163	4.6%	38	1.1%	80	2.4%	127	3.8%
December 2024	115	3.4%	145	4.1%	43	1.3%	72	2.1%	122	3.6%
January 2025	143	4.2%	171	4.8%	37	1.1%	111	3.3%	157	4.7%

**Quits as a Percentage of Total Separations,
Tennessee Jan. 2024-Jan. 2025**



**Hires and Job Openings Rate
Jan. 2022- Jan. 2025**



Source: Bureau of Labor Statistics

Tennessee Civilian Labor Workforce 1995-Present

County Unemployment Rates*

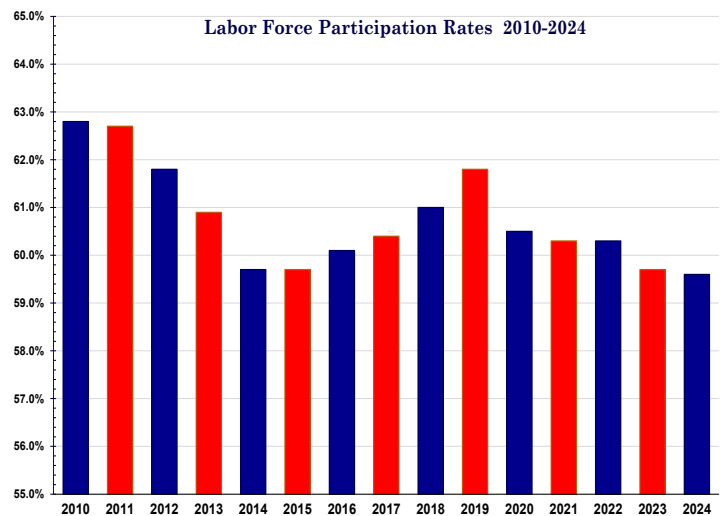
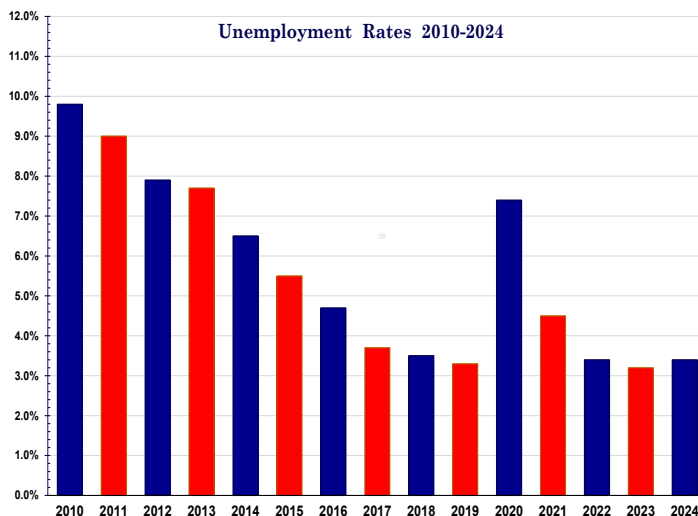
(NUMBERS IN THOUSANDS) MONTHLY DATA NOT SEASONALLY ADJUSTED

Year and Month	Civilian noninstitutional population	Civilian Labor Force					
		Total	Participation Rate (%)	Employed		Unemployed	
				Total	Rate (%)	Total	Rate (%)
1995	4,074.0	2,719.0	66.7%	2,579.8	63.3%	139.3	5.1%
1996	4,148.2	2,758.8	66.5%	2,615.2	63.0%	143.6	5.2%
1997	4,216.7	2,775.2	65.8%	2,630.3	62.4%	145.0	5.2%
1998	4,270.1	2,804.4	65.7%	2,683.0	62.8%	121.4	4.3%
1999	4,314.7	2,835.9	65.7%	2,723.6	63.1%	112.3	4.0%
2000	4,357.9	2,845.3	65.3%	2,736.0	62.8%	109.3	3.8%
2001	4,402.5	2,858.1	64.9%	2,726.6	61.9%	131.5	4.6%
2002	4,447.3	2,898.3	65.2%	2,748.6	61.8%	149.8	5.2%
2003	4,495.8	2,907.1	64.7%	2,746.0	61.1%	161.0	5.5%
2004	4,546.2	2,899.8	63.8%	2,745.2	60.4%	154.6	5.3%
2005	4,616.0	2,899.8	62.8%	2,740.4	59.4%	159.5	5.5%
2006	4,699.5	3,015.6	64.2%	2,858.7	60.8%	156.9	5.2%
2007	4,768.4	3,047.7	63.9%	2,906.1	60.9%	141.6	4.6%
2008	4,831.3	3,067.9	63.5%	2,869.5	59.4%	198.4	6.5%
2009	4,879.4	3,050.4	62.5%	2,733.2	56.0%	317.2	10.4%
2010	4,928.4	3,094.8	62.8%	2,791.6	56.6%	303.2	9.8%
2011	4,973.9	3,119.2	62.7%	2,837.1	57.0%	282.2	9.0%
2012	5,021.2	3,102.5	61.8%	2,856.5	56.9%	246.0	7.9%
2013	5,065.8	3,086.0	60.9%	2,849.5	56.3%	236.4	7.7%
2014	5,111.4	3,052.6	59.7%	2,852.7	55.8%	199.9	6.5%
2015	5,161.2	3,078.8	59.7%	2,908.0	56.3%	170.9	5.5%
2016	5,216.3	3,135.2	60.1%	2,987.2	57.3%	148.0	4.7%
2017	5,274.9	3,187.8	60.4%	3,068.3	58.2%	119.5	3.7%
2018	5,331.4	3,250.0	61.0%	3,137.0	58.8%	113.1	3.5%
2019	5,384.7	3,329.4	61.8%	3,218.1	59.8%	111.4	3.3%
2020	5,443.9	3,294.8	60.5%	3,049.5	56.0%	245.3	7.4%
2021	5,498.3	3,316.9	60.3%	3,168.6	57.6%	148.3	4.5%
2022	5,578.0	3,361.7	60.3%	3,248.3	58.2%	113.4	3.4%
2023	5,661.6	3,380.1	59.7%	3,270.6	57.8%	109.5	3.2%
2024	5,739.4	3,420.4	59.6%	3,303.0	57.5%	117.4	3.4%
2025							
January (r)	5,777.8	3,430.5	59.4%	3,300.3	57.1%	130.2	3.8%
February (p)	5,782.4	3,437.1	59.4%	3,317.7	57.4%	119.4	3.5%
March							
April							
May							
June							
July							
August							
September							
October							
November							
December							

(r)=revised
(p)=preliminary

County	Feb.	Feb.	County	Feb.	Feb.
	2024	2025		2024	2025
Anderson	3.0	3.2	Lauderdale	4.9	5.1
Bedford	2.6	3.0	Lawrence	3.3	4.6
Benton	4.2	4.5	Lewis	2.9	5.9
Bledsoe	2.9	3.1	Lincoln	2.8	3.4
Blount	2.8	2.9	Loudon	2.8	3.2
Bradley	3.3	3.6	Macon	2.4	2.8
Campbell	3.6	3.5	Madison	3.4	3.9
Cannon	2.8	2.9	Marion	3.5	4.1
Carroll	3.5	3.9	Marshall	3.0	4.8
Carter	3.5	3.9	Maury	2.5	5.4
Cheatham	2.5	2.7	McMinn	3.8	4.2
Chester	3.5	3.6	McNairy	3.5	3.9
Claiborne	3.8	3.9	Meigs	4.7	5.2
Clay	4.3	4.4	Monroe	3.4	3.7
Cocke	5.2	6.6	Montgomery	3.2	3.6
Coffee	2.9	3.4	Moore	2.9	3.4
Crockett	3.3	3.7	Morgan	3.6	3.9
Cumberland	4.7	4.5	Obion	3.3	3.6
Davidson	2.6	2.9	Overton	3.6	3.7
Decatur	4.1	4.5	Perry	4.6	4.9
DeKalb	3.7	3.9	Pickett	5.6	6.3
Dickson	2.4	3.0	Polk	3.3	3.6
Dyer	3.1	3.4	Putnam	3.1	3.1
Fayette	3.0	3.5	Rhea	3.7	4.0
Fentress	3.2	3.4	Roane	3.5	3.7
Franklin	3.4	3.3	Robertson	2.5	2.7
Gibson	3.3	3.6	Rutherford	2.4	2.7
Giles	3.3	4.8	Scott	3.7	3.8
Grainger	3.3	3.7	Sequatchie	3.4	4.1
Greene	4.0	4.4	Sevier	4.6	5.0
Grundy	3.9	4.0	Shelby	4.0	4.5
Hamblen	3.3	3.6	Smith	3.0	3.2
Hamilton	2.8	3.1	Stewart	3.4	3.7
Hancock	4.3	4.0	Sullivan	3.3	3.4
Hardeman	4.2	5.2	Sumner	2.5	2.9
Hardin	3.4	3.6	Tipton	3.4	3.5
Hawkins	3.9	4.0	Trousdale	2.6	3.1
Haywood	2.7	3.4	Unicoi	3.7	5.1
Henderson	3.5	4.3	Union	3.1	3.7
Henry	4.0	4.1	Van Buren	3.1	3.4
Hickman	2.6	3.6	Warren	3.2	3.5
Houston	4.1	3.9	Washington	2.9	3.0
Humphreys	3.6	3.8	Wayne	3.7	4.0
Jackson	4.0	4.5	Weakley	3.3	3.7
Jefferson	3.8	4.1	White	3.6	4.2
Johnson	4.3	5.7	Williamson	2.4	2.6
Knox	2.7	2.8	Wilson	2.6	2.7
Lake	4.0	5.0			

*Data Not Seasonally Adjusted



Statewide

Estimated Nonfarm Employment (in thousands)

Industry	Feb. 2024	Revised Jan. 2025	Preliminary Feb. 2025	Net Change	
				Jan. 2025	Feb. 2024
Total Nonfarm	3350.0	3,333.3	3,364.1	30.8	14.1
Total Private	2892.3	2,878.3	2,898.6	20.3	6.3
Goods Producing	529.8	531.3	530.4	-0.9	0.6
Mining, Logging & Construction	164.2	166.6	164.6	-2.0	0.4
Mining & Logging	4.3	4.5	4.5	0.0	0.2
Construction	159.9	162.1	160.1	-2.0	0.2
Construction of Buildings	33.3	33.7	34.0	0.3	0.7
Heavy and Civil Engineering	21.9	23.1	22.8	-0.3	0.9
Specialty Trade Contractors	104.7	105.3	103.3	-2.0	-1.4
Manufacturing	365.6	364.7	365.8	1.1	0.2
Durable Goods Manufacturing	235.4	236.4	237.8	1.4	2.4
Wood Product Manufacturing	13.6	13.2	13.4	0.2	-0.2
Nonmetallic Mineral Product Manufacturing	15.3	15.4	15.5	0.1	0.2
Primary Metal Manufacturing	11.1	11.2	11.3	0.1	0.2
Fabricated Metal Product Manufacturing	41.8	42.8	43.2	0.4	1.4
Machinery Manufacturing	24.7	25.0	25.1	0.1	0.4
Computer & Electronic Product Manufacturing	7.6	7.8	7.9	0.1	0.3
Electrical Equipment & Appliance Manufacturing	21.4	22.2	22.3	0.1	0.9
Transportation Equipment Manufacturing	75.7	74.6	74.7	0.1	-1.0
Furniture & Related Product Manufacturing	8.8	9.1	9.2	0.1	0.4
Miscellaneous Manufacturing	15.4	15.1	15.2	0.1	-0.2
Nondurable Goods Manufacturing	130.2	128.3	128.0	-0.3	-2.2
Food Manufacturing	41.0	40.7	40.8	0.1	-0.2
Beverage & Tobacco Product Manufacturing	6.9	6.8	6.8	0.0	-0.1
Paper Manufacturing	12.9	12.5	12.5	0.0	-0.4
Printing & Related Support Activities	8.0	7.7	7.7	0.0	-0.3
Chemical Manufacturing	27.2	26.9	26.9	0.0	-0.3
Plastics & Rubber Products Manufacturing	24.9	23.9	23.8	-0.1	-1.1
Service Providing	2820.2	2,802.0	2,833.7	31.7	13.5
Trade, Transportation, & Utilities	688.9	692.7	694.1	1.4	5.2
Wholesale Trade	136.2	137.5	137.3	-0.2	1.1
Merchant Wholesalers, Durable Goods	80.5	81.3	81.1	-0.2	0.6
Merchant Wholesalers, Nondurable Goods	48.8	49.3	49.3	0.0	0.5
Wholesale Trade Agents & Brokers	6.9	6.9	6.9	0.0	0.0
Retail Trade	342.9	344.2	345.8	1.6	2.9
Motor Vehicle & Parts Dealers	48.5	47.9	48.8	0.9	0.3
Building Material, Garden Equipment, & Supplies	33.4	32.4	33.3	0.9	-0.1
Food & Beverage Retailers	60.7	60.6	61.1	0.5	0.4
Furniture, Home Furnishings, Electronics, & Appliance	18.4	18.2	18.3	0.1	-0.1
General Merchandise Retailers	77.5	79.5	79.2	-0.3	1.7
Health & Personal Care Retailers	24.4	23.4	23.5	0.1	-0.9
Gasoline Stations & Fuel Dealers	25.9	25.8	26.1	0.3	0.2
Clothing, Clothing Accessories, Shoe & Jewelry Retail	22.4	23.2	22.7	-0.5	0.3
Sporting Goods, Hobby, Music, & Book Retailers	31.7	33.2	32.8	-0.4	1.1
Transportation, Warehousing, & Utilities	209.8	211.0	211.0	0.0	1.2
Utilities	4.4	4.5	4.5	0.0	0.1
Transportation & Warehousing	205.4	206.5	206.5	0.0	1.1
Truck Transportation	56.3	53.5	54.1	0.6	-2.2
Information	54.9	53.1	53.7	0.6	-1.2
Financial Activities	191.2	191.1	191.8	0.7	0.6
Finance & Insurance	146.9	148.1	147.6	-0.5	0.7
Real Estate, Rental, & Leasing	44.3	43.0	44.2	1.2	-0.1
Professional & Business Services	453.1	443.0	444.1	1.1	-9.0
Professional, Scientific, & Technical Services	177.8	179.4	181.0	1.6	3.2
Management of Companies & Enterprises	58.0	57.8	58.1	0.3	0.1
Administrative, Support, & Waste Management	217.3	205.8	205.0	-0.8	-12.3
Private Educational & Health Services	490.5	483.5	493.1	9.6	2.6
Private Educational Services	72.8	64.9	69.7	4.8	-3.1
Health Care & Social Assistance	417.7	418.6	423.4	4.8	5.7
Ambulatory Health Care Services	174.6	172.0	175.9	3.9	1.3
Hospitals	123.8	124.7	125.2	0.5	1.4
Nursing & Residential Care Facilities	61.4	62.3	63.0	0.7	1.6
Social Assistance	57.9	59.6	59.3	-0.3	1.4
Leisure & Hospitality	353.8	351.4	357.8	6.4	4.0
Arts, Entertainment, & Recreation	44.1	44.6	45.7	1.1	1.6
Accommodation & Food Services	309.7	306.8	312.1	5.3	2.4
Accommodation	36.0	35.0	35.5	0.5	-0.5
Food Services & Drinking Places	273.7	271.8	276.6	4.8	2.9
Other Services	130.1	132.2	133.6	1.4	3.5
Government	457.7	455.0	465.5	10.5	7.8
Federal Government	57.7	59.0	58.8	-0.2	1.1
State Government	103.3	96.1	106.3	10.2	3.0
State Government Educational Services	61.4	53.4	63.4	10.0	2.0
State Government Excluding Educational Services	41.9	42.7	42.9	0.2	1.0
Local Government	296.7	299.9	300.4	0.5	3.7
Local Government Educational Services	151.0	151.9	152.2	0.3	1.2
Local Government Excluding Educational Services	145.7	148.0	148.2	0.2	2.5

Nonfarm Employment Summary

Monthly Employment Changes

Total Nonfarm	+30,800
State Government Educational Services	+10,000
Leisure & Hospitality	+6,400
Accommodation & Food Services	+5,300
Private Educational Services	+4,800
Health Care & Social Assistance	+4,800
Ambulatory Health care Services	+3,900
Retail Trade	+1,600
Professional, Scientific & Tech Services	+1,600
Durable Goods Manufacturing	+1,400
Other Services	+1,400
Real Estate, Rental & Leasing	+1,200
Specialty Trade Contractors	-2,000
Admin, Support & Waste Mgmt. Svcs.	-800
Nondurable Goods manufacturing	-300

Annual Changes

Total Nonfarm	+14,100
Government	+7,800
Local Government	+3,700
Local Government exc. Education	+2,500
Health Care & Social Assistance	+5,700
Leisure & Hospitality	+4,000
Other Services	+3,500
Durable Goods Manufacturing	+2,400
Admin, Support & Waste Mgmt. Svcs.	-12,300
Private Educational Services	-3,100

Monthly Unemployment Rates Counties

Increased	5
Decreased	88
Unchanged	2
Highest/Lowest Rate	Rate
Williamson County	2.6%
Cocke County	6.6%

The data from all the nonfarm employment estimates tables include all full- and part-time nonfarm wage and salary employees who worked during or received pay for any part of the pay period that includes the 12th of the month. This is a count of jobs by place of work. Agricultural workers, proprietors, self-employed persons, workers in private households, and unpaid family workers are excluded. These numbers may not add due to rounding. Data are based on the 2024 benchmark.

Civilian Labor Force

	February 2024				January 2025				February 2025			
	Labor Force	Employed	Unemployed	Rate	Labor Force	Employed	Unemployed	Rate	Labor Force	Employed	Unemployed	Rate
Seasonally Adjusted												
UNITED STATES	167,475,000	161,013,000	6,462,000	3.9	170,744,000	163,895,000	6,849,000	4.0	170,359,000	163,307,000	7,052,000	4.1
TENNESSEE	3,401,996	3,295,679	106,317	3.1	3,441,916	3,313,232	128,684	3.7	3,444,386	3,316,997	127,389	3.7
Not Seasonally Adjusted												
UNITED STATES	167,285,000	160,315,000	6,970,000	4.2	169,814,000	162,347,000	7,467,000	4.4	170,116,000	162,544,000	7,572,000	4.5
TENNESSEE	3,387,749	3,283,121	104,628	3.1	3,431,226	3,300,479	130,747	3.8	3,437,068	3,317,706	119,362	3.5
Metropolitan Statistical Areas												
Chattanooga	288,854	280,551	8,303	2.9	290,921	280,695	10,226	3.5	290,897	281,426	9,471	3.3
Clarksville	137,691	132,335	5,356	3.9	140,926	134,689	6,237	4.4	141,398	135,602	5,796	4.1
Cleveland	56,110	54,284	1,826	3.3	56,202	53,900	2,302	4.1	56,292	54,269	2,023	3.6
Jackson	77,782	75,147	2,635	3.4	78,801	75,465	3,336	4.2	78,790	75,806	2,984	3.8
Johnson City	96,440	93,479	2,961	3.1	97,004	93,162	3,842	4.0	97,930	94,593	3,337	3.4
Kingsport-Bristol	131,526	127,139	4,387	3.3	133,288	128,055	5,233	3.9	133,299	128,524	4,775	3.6
Knoxville	447,935	435,232	12,703	2.8	454,000	438,238	15,762	3.5	456,337	442,580	13,757	3.0
Memphis	621,799	599,321	22,478	3.6	623,057	594,832	28,225	4.5	625,647	598,383	27,264	4.4
Morristown	53,368	51,474	1,894	3.5	54,285	52,018	2,267	4.2	54,636	52,535	2,101	3.8
Nashville-Murfreesboro	1,146,337	1,117,438	28,899	2.5	1,163,018	1,126,888	36,130	3.1	1,166,544	1,132,206	34,338	2.9
Micropolitan Statistical Areas												
Athens	24,837	23,842	995	4.0	25,188	23,960	1,228	4.9	25,171	24,070	1,101	4.4
Cookeville	63,778	61,654	2,124	3.3	64,446	61,879	2,567	4.0	64,578	62,340	2,238	3.5
Crossville	23,094	22,015	1,079	4.7	23,390	22,147	1,243	5.3	23,263	22,207	1,056	4.5
Dyersburg	17,711	17,154	557	3.1	18,007	17,325	682	3.8	18,091	17,480	611	3.4
Fayetteville	16,742	16,265	477	2.8	16,908	16,272	636	3.8	16,781	16,204	577	3.4
Greeneville	28,008	26,878	1,130	4.0	28,356	26,967	1,389	4.9	28,457	27,198	1,259	4.4
Lawrenceburg	19,089	18,459	630	3.3	19,488	18,657	831	4.3	19,385	18,502	883	4.6
Lewisburg	16,231	15,746	485	3.0	16,662	16,057	605	3.6	16,853	16,042	811	4.8
Martin	13,974	13,515	459	3.3	14,035	13,404	631	4.5	14,023	13,500	523	3.7
McMinnville	17,298	16,746	552	3.2	17,360	16,666	694	4.0	17,169	16,571	598	3.5
Newport	14,724	13,965	759	5.2	15,124	14,072	1,052	7.0	15,101	14,106	995	6.6
Paris	12,497	11,997	500	4.0	13,095	12,516	579	4.4	12,927	12,400	527	4.1
Sevierville	50,643	48,316	2,327	4.6	51,938	49,263	2,675	5.2	51,461	48,912	2,549	5.0
Shelbyville	25,333	24,675	658	2.6	25,656	24,830	826	3.2	25,771	24,997	774	3.0
Tullahoma-Manchester	29,313	28,463	850	2.9	29,442	28,369	1,073	3.6	29,438	28,447	991	3.4
Union City	13,350	12,910	440	3.3	13,719	13,174	545	4.0	13,622	13,138	484	3.6
Winchester	18,294	17,664	630	3.4	18,295	17,574	721	3.9	18,321	17,710	611	3.3
Cities												
Bartlett	27,309	26,438	871	3.2	27,287	26,258	1,029	3.8	27,306	26,375	931	3.4
Brentwood	22,157	21,589	568	2.6	22,395	21,770	625	2.8	22,423	21,884	539	2.4
Bristol	12,191	11,812	379	3.1	12,422	11,957	465	3.7	12,455	12,026	429	3.4
Chattanooga	95,434	92,566	2,868	3.0	96,675	92,969	3,706	3.8	96,711	93,406	3,305	3.4
Clarksville	75,045	72,508	2,537	3.4	76,885	73,760	3,125	4.1	77,072	74,189	2,883	3.7
Cleveland	21,092	20,394	698	3.3	21,177	20,251	926	4.4	21,196	20,393	803	3.8
Collierville	24,745	24,050	695	2.8	24,671	23,887	784	3.2	24,750	23,993	757	3.1
Columbia	23,781	23,151	630	2.6	24,203	23,349	854	3.5	25,066	23,461	1,605	6.4
Cookeville	16,420	15,905	515	3.1	16,467	15,858	609	3.7	16,501	16,000	501	3.0
Farragut	12,691	12,375	316	2.5	12,822	12,462	360	2.8	12,907	12,595	312	2.4
Franklin	48,447	47,303	1,144	2.4	49,136	47,699	1,437	2.9	49,219	47,949	1,270	2.6
Gallatin	26,077	25,361	716	2.7	26,447	25,574	873	3.3	26,482	25,689	793	3.0
Germantown	18,205	17,691	514	2.8	18,192	17,571	621	3.4	18,175	17,649	526	2.9
Hendersonville	35,159	34,303	856	2.4	35,731	34,592	1,139	3.2	35,791	34,747	1,044	2.9
Jackson	29,011	27,952	1,059	3.7	29,418	28,082	1,336	4.5	29,436	28,247	1,189	4.0
Johnson City	35,695	34,712	983	2.8	35,855	34,603	1,252	3.5	36,214	35,130	1,084	3.0
Kingsport	23,323	22,564	759	3.3	23,853	22,840	1,013	4.2	23,855	22,971	884	3.7
Knoxville	99,955	97,120	2,835	2.8	101,319	97,809	3,510	3.5	101,868	98,847	3,021	3.0
LaVergne	21,790	21,240	550	2.5	22,079	21,420	659	3.0	22,149	21,514	635	2.9
Lebanon	24,599	23,956	643	2.6	24,968	24,164	804	3.2	25,064	24,284	780	3.1
Maryville	15,580	15,177	403	2.6	15,800	15,281	519	3.3	15,883	15,427	456	2.9
Memphis	281,835	269,600	12,235	4.3	282,776	267,768	15,008	5.3	283,102	268,959	14,143	5.0
Morristown	12,518	12,097	421	3.4	12,742	12,228	514	4.0	12,866	12,359	507	3.9
Mount Juliet	23,147	22,545	602	2.6	23,393	22,741	652	2.8	23,421	22,853	568	2.4
Murfreesboro	94,843	92,443	2,400	2.5	96,245	93,228	3,017	3.1	96,427	93,636	2,791	2.9
Nashville	411,330	400,631	10,699	2.6	417,288	404,071	13,217	3.2	418,391	406,257	12,134	2.9
Oak Ridge	14,449	13,997	452	3.1	14,637	14,095	542	3.7	14,743	14,246	497	3.4
Shelbyville	12,475	12,149	326	2.6	12,633	12,225	408	3.2	12,681	12,308	373	2.9
Smyrna	31,814	31,039	775	2.4	32,240	31,303	937	2.9	32,299	31,440	859	2.7
Spring Hill	31,662	30,965	697	2.2	32,065	31,226	839	2.6	32,477	31,385	1,092	3.4

Chattanooga MSA

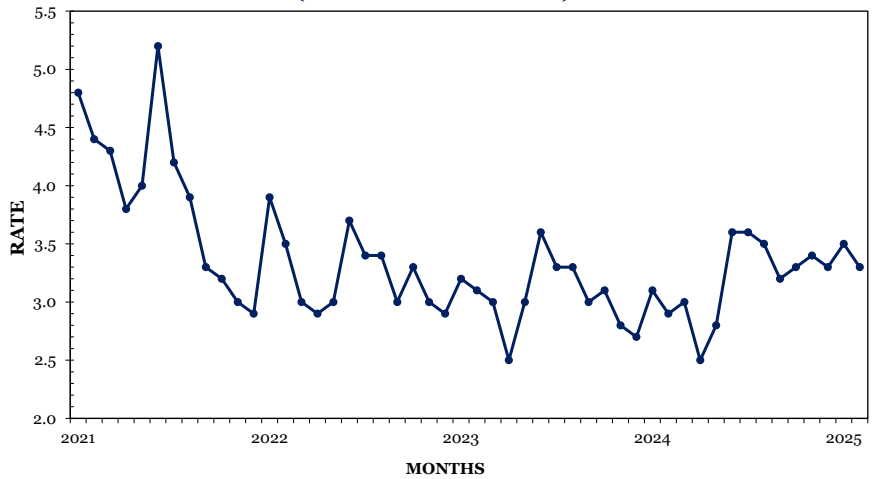
Monthly Employment Changes

Total Nonfarm	+2,300
Private Education & Health Services	+800
State Government	+600
Retail Trade	+200
Financial Activities	+200
Leisure & Hospitality	+200
Durable Goods Manufacturing	+100
Mining, Logging & Construction	-200

Annual Employment Changes

Total Nonfarm	+600
Goods-Producing	+300
Service-Providing	+300

CHATTANOOGA MSA UNEMPLOYMENT RATES (NOT SEASONALLY ADJUSTED)



Estimated Nonfarm Employment (in thousands)

Industry	Feb. 2024	Revised	Preliminary	Net Change	
		Jan. 2025	Feb. 2025	Jan. 2025 Feb. 2025	Feb. 2024 Feb. 2025
Total Nonfarm	293.3	291.6	293.9	2.3	0.6
Total Private	260.1	259.1	260.7	1.6	0.6
Goods-Producing	55.0	55.4	55.3	-0.1	0.3
Mining, Logging, & Construction	14.0	14.7	14.5	-0.2	0.5
Manufacturing	41.0	40.7	40.8	0.1	-0.2
Durable Goods Manufacturing	26.5	26.4	26.5	0.1	0.0
Nondurable Goods Manufacturing	14.5	14.3	14.3	0.0	-0.2
Service-Providing	238.3	236.2	238.6	2.4	0.3
Trade, Transportation, & Utilities	54.5	54.8	55.0	0.2	0.5
Wholesale Trade	8.8	9.0	9.0	0.0	0.2
Retail Trade	28.7	29.0	29.2	0.2	0.5
Transportation, Warehousing, & Utilities	17.0	16.8	16.8	0.0	-0.2
Information	3.4	3.2	3.3	0.1	-0.1
Financial Activities	28.4	28.6	28.8	0.2	0.4
Professional & Business Services	31.1	29.8	29.9	0.1	-1.2
Private Education & Health Services	44.3	44.1	44.9	0.8	0.6
Leisure & Hospitality	30.6	29.9	30.1	0.2	-0.5
Other Services	12.8	13.3	13.4	0.1	0.6
Government	33.2	32.5	33.2	0.7	0.0
Federal Government	6.2	6.3	6.3	0.0	0.1
State Government	6.9	6.4	7.0	0.6	0.1
Local Government	20.1	19.8	19.9	0.1	-0.2

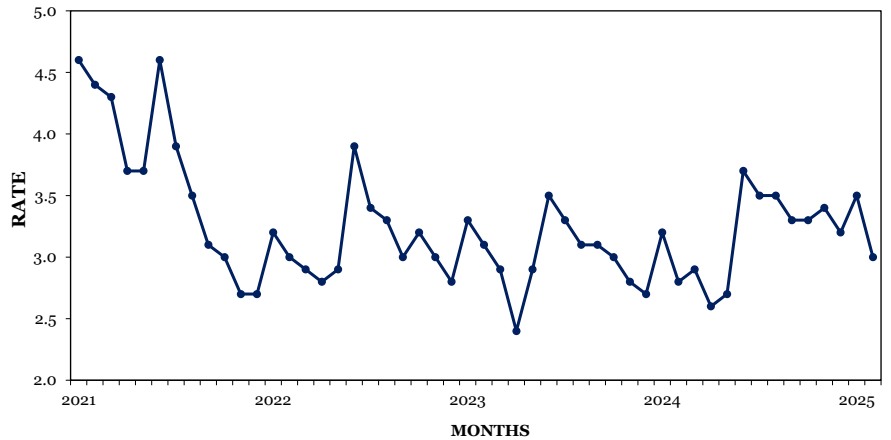
Chattanooga MSA: Hamilton County, Marion County, Sequatchie County, Catoosa County, GA, Dade County, GA, & Walker County, GA

Knoxville MSA

Monthly Employment Changes

Total Nonfarm	+5,800
State Government	+1,900
Private Educational & Health Services	+700
Leisure & Hospitality	+1,300
Professional & Business Services	+700
Retail Trade	+500
Other Services	+300
Mining, Logging & Construction	-500
Annual Employment Changes	
Total Nonfarm	+4,300
Goods-Producing	+100
Service-Providing	+4,200

KNOXVILLE MSA UNEMPLOYMENT RATES (NOT SEASONALLY ADJUSTED)



Estimated Nonfarm Employment (in thousands)

Industry	Feb. 2024	Revised	Preliminary	Net Change	
		Jan. 2025	Feb. 2025	Jan. 2025	Feb. 2024
		Jan. 2025	Feb. 2025	Feb. 2025	Feb. 2025
Total Nonfarm	447.3	445.8	451.6	5.8	4.3
Total Private	384.2	384.9	388.8	3.9	4.6
Goods-Producing	67.5	67.9	67.6	-0.3	0.1
Mining, Logging, & Construction	21.7	22.6	22.1	-0.5	0.4
Manufacturing	45.8	45.3	45.5	0.2	-0.3
Durable Goods Manufacturing	34.6	34.6	34.8	0.2	0.2
Nondurable Goods Manufacturing	11.2	10.7	10.7	0.0	-0.5
Service-Providing	379.8	377.9	384.0	6.1	4.2
Trade, Transportation, & Utilities	88.6	90.9	91.2	0.3	2.6
Wholesale Trade	19.4	20.1	20.1	0.0	0.7
Retail Trade	51.2	51.2	51.7	0.5	0.5
Transportation, Warehousing, & Utilities	18.0	19.6	19.4	-0.2	1.4
Information	6.5	6.0	6.0	0.0	-0.5
Financial Activities	24.0	23.9	23.8	-0.1	-0.2
Professional & Business Services	72.2	70.4	71.1	0.7	-1.1
Private Education & Health Services	61.6	62.9	64.6	1.7	3.0
Leisure & Hospitality	46.9	45.6	46.9	1.3	0.0
Other Services	16.9	17.3	17.6	0.3	0.7
Government	63.1	60.9	62.8	1.9	-0.3
Federal Government	5.7	5.7	5.8	0.1	0.1
State Government	21.1	18.9	20.8	1.9	-0.3
Local Government	36.3	36.3	36.2	-0.1	-0.1

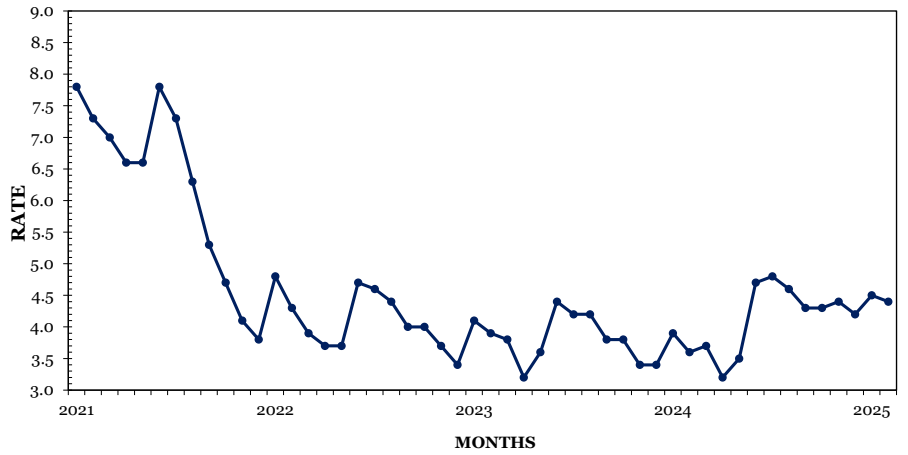
Knoxville MSA: Anderson County, Blount County, Campbell County, Grainger County, Knox County, Loudon County, Morgan County, Roane County, Union County

Memphis MSA

Monthly Employment Changes

Total Nonfarm	+3,800
Private Education & Health Services	+1,900
State Government	+1,100
Leisure & Hospitality	+1,000
Local Government	+700
Trade, Transportation & Utilities	+500
Admin, Support & Waste Management	-1,000
Mining, Logging & Construction	-700
Annual Employment Changes	
Total Nonfarm	-7,700
Goods-Producing	-1,800
Service-Providing	-5,900

MEMPHIS MSA UNEMPLOYMENT RATES (NOT SEASONALLY ADJUSTED)



Estimated Nonfarm Employment (in thousands)

Industry	Feb. 2024	Revised Jan. 2025	Preliminary Feb. 2025	Net Change Jan. 2025 - Feb. 2025	Net Change Feb. 2024 - Feb. 2025
Total Nonfarm	660.6	649.1	652.9	3.8	-7.7
Total Private	573.3	562.7	564.8	2.1	-8.5
Goods-Producing	66.1	65.0	64.3	-0.7	-1.8
Mining, Logging, & Construction	24.9	24.7	24.0	-0.7	-0.9
Manufacturing	41.2	40.3	40.3	0.0	-0.9
Durable Goods Manufacturing	24.1	23.7	23.7	0.0	-0.4
Nondurable Goods Manufacturing	17.1	16.6	16.6	0.0	-0.5
Service-Providing	594.5	584.1	588.6	4.5	-5.9
Trade, Transportation, & Utilities	192.2	189.2	189.7	0.5	-2.5
Wholesale Trade	38.6	39.1	39.1	0.0	0.5
Retail Trade	61.4	60.8	60.9	0.1	-0.5
Transportation, Warehousing, & Utilities	92.2	89.3	89.7	0.4	-2.5
Information	5.4	5.1	5.1	0.0	-0.3
Financial Activities	29.6	30.0	30.0	0.0	0.4
Professional & Business Services	90.6	88.1	87.2	-0.9	-3.4
Professional, Scientific, & Technical Services	28.1	29.1	29.1	0.0	1.0
Management of Companies & Enterprises	9.6	9.5	9.6	0.1	0.0
Administrative, Support, & Waste Management	52.9	49.5	48.5	-1.0	-4.4
Private Education & Health Services	100.6	98.1	100.0	1.9	-0.6
Leisure & Hospitality	61.0	59.4	60.4	1.0	-0.6
Other Services	27.8	27.8	28.1	0.3	0.3
Government	87.3	86.4	88.1	1.7	0.8
Federal Government	16.5	16.6	16.5	-0.1	0.0
State Government	16.1	15.0	16.1	1.1	0.0
Local Government	54.7	54.8	55.5	0.7	0.8

Memphis MSA: Fayette County, Shelby County, Tipton County, Benton County, MS, DeSoto County, MS, Marshall County, MS, Tate County, MS, Tunica County, MS, Crittenden County, AR



Nashville MSA

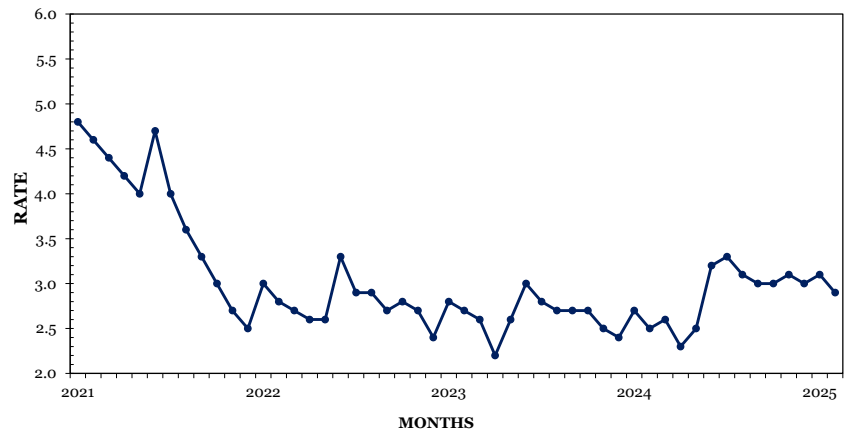
Monthly Employment Changes

Total Nonfarm	+7,900
Leisure & Hospitality	+2,800
State Government	+1,700
Private Educational Services	+1,500
Health Care & Social Assistance	+1,000
Local Government	+600
Mining, Logging & Construction	-1,000
Wholesale Trade	-400

Annual Employment Changes

Total Nonfarm	+5,900
Goods-Producing	+500
Service-Providing	+5,400

NASHVILLE MSA UNEMPLOYMENT RATES (NOT SEASONALLY ADJUSTED)



Estimated Nonfarm Employment (in thousands)

Industry	Feb.	Revised	Preliminary	Net Change	
	2024	Jan. 2025	Feb. 2025	Jan. 2025 Feb. 2025	Feb. 2024 Feb. 2025
Total Nonfarm	1,175.0	1,173.0	1,180.9	7.9	5.9
Total Private	1,043.9	1,039.8	1,045.5	5.7	1.6
Goods-Producing	152.6	153.7	153.1	-0.6	0.5
Mining, Logging, & Construction	63.8	64.9	63.9	-1.0	0.1
Manufacturing	88.8	88.8	89.2	0.4	0.4
Durable Goods Manufacturing	63.1	64.0	64.4	0.4	1.3
Nondurable Goods Manufacturing	25.7	24.8	24.8	0.0	-0.9
Service-Providing	1,022.4	1,019.3	1,027.8	8.5	5.4
Trade, Transportation, & Utilities	226.5	232.0	231.6	-0.4	5.1
Wholesale Trade	49.9	50.8	50.4	-0.4	0.5
Retail Trade	105.6	107.3	107.6	0.3	2.0
Transportation, Warehousing, & Utilities	71.0	73.9	73.6	-0.3	2.6
Information	32.0	30.9	31.3	0.4	-0.7
Financial Activities	80.9	80.1	80.4	0.3	-0.5
Professional & Business Services	195.3	189.0	189.2	0.2	-6.1
Professional, Scientific, & Technical Services	84.0	83.8	84.2	0.4	0.2
Management of Companies & Enterprises	30.9	30.4	30.4	0.0	-0.5
Administrative, Support, & Waste Management	80.4	74.8	74.6	-0.2	-5.8
Private Education & Health Services	178.1	176.3	178.8	2.5	0.7
Private Educational Services	34.3	30.5	32.0	1.5	-2.3
Health Care & Social Assistance	143.8	145.8	146.8	1.0	3.0
Leisure & Hospitality	129.4	127.7	130.5	2.8	1.1
Other Services	49.1	50.1	50.6	0.5	1.5
Government	131.1	133.2	135.4	2.2	4.3
Federal Government	16.6	16.6	16.5	-0.1	-0.1
State Government	31.6	30.8	32.5	1.7	0.9
Local Government	82.9	85.8	86.4	0.6	3.5

Nashville MSA: Cannon County, Cheatham County, Davidson County, Dickson County, Hickman County, Macon County, Maury County, Robertson County, Rutherford County, Smith County, Sumner County, Trousdale County, Williamson County, Wilson County



Nonfarm Employment (Smaller MSAs)

	Clarksville, TN-KY MSA		Cleveland, TN MSA		Jackson, TN MSA	
	Jan. 2025 Revised	Feb. 2025 Prelim.	Jan. 2025 Revised	Feb. 2025 Prelim.	Jan. 2025 Revised	Feb. 2025 Prelim.
Total Nonfarm	107,100	107,900	46,100	46,600	87,600	88,500
Total Private	84,900	85,400	40,700	41,000	70,500	71,200
Goods Producing	18,900	18,800	10,000	10,100	19,200	19,200
Mining, Logging & Construction	4,900	4,800	2,200	2,200	4,300	4,200
Manufacturing	14,000	14,000	7,800	7,900	14,900	15,000
Service Providing	88,200	89,100	36,100	36,500	68,400	69,300
Trade, Transportation, & Utilities	21,200	21,200	10,300	10,200	16,800	16,900
Wholesale Trade	2,500	2,500	1,300	1,300	3,500	3,500
Retail Trade	14,000	14,000	5,800	5,700	9,700	9,800
Transportation, Warehousing, & Utilities	4,700	4,700	3,200	3,200	3,600	3,600
Information	1,400	1,400	400	400	700	700
Financial Activities	4,100	4,100	1,500	1,500	3,400	3,400
Professional & Business Services	9,000	9,100	4,000	4,000	6,900	7,000
Private Educational & Health Services	14,100	14,300	7,100	7,300	13,200	13,500
Leisure & Hospitality	12,600	12,800	4,900	5,000	7,500	7,700
Other Services	3,600	3,700	2,500	2,500	2,800	2,800
Government	22,200	22,500	5,400	5,600	17,100	17,300
Federal Government	5,700	5,700	400	400	700	700
State Government	3,300	3,400	500	700	1,800	1,900
Local Government	13,200	13,400	4,500	4,500	14,600	14,700

	Johnson City, TN MSA		Kingsport-Bristol, TN-VA MSA		Morristown, TN MSA	
	Jan. 2025 Revised	Feb. 2025 Prelim.	Jan. 2025 Revised	Feb. 2025 Prelim.	Jan. 2025 Revised	Feb. 2025 Prelim.
Total Nonfarm	85,700	87,400	124,400	125,400	50,400	51,100
Total Private	68,300	69,100	108,200	109,000	43,500	43,900
Goods Producing	11,500	11,600	27,800	27,700	15,000	14,900
Mining, Logging & Construction	3,100	3,100	6,900	6,800	2,500	2,400
Manufacturing	8,400	8,500	20,900	20,900	12,500	12,500
Service Providing	74,200	75,800	96,600	97,700	35,400	36,200
Trade, Transportation, & Utilities	14,700	14,800	24,000	24,200	10,000	10,100
Wholesale Trade	3,000	3,000	3,500	3,500	1,400	1,400
Retail Trade	10,600	10,700	15,600	15,700	6,000	6,100
Transportation, Warehousing, & Utilities	1,100	1,100	4,900	5,000	2,600	2,600
Information	800	800	1,300	1,300	300	300
Financial Activities	3,700	3,700	4,300	4,300	1,100	1,100
Professional & Business Services	9,600	9,700	13,200	13,300	4,900	5,000
Private Educational & Health Services	15,200	15,500	18,400	18,700	6,400	6,600
Leisure & Hospitality	9,900	10,100	13,300	13,500	4,300	4,400
Other Services	2,900	2,900	5,900	6,000	1,500	1,500
Government	17,400	18,300	16,200	16,400	6,900	7,200
Federal Government	3,400	3,300	900	900	300	300
State Government	5,800	6,700	2,400	2,600	1,200	1,500
Local Government	8,200	8,300	12,900	12,900	5,400	5,400

Clarksville MSA is Montgomery County, Stewart County, Christian County, KY, & Trigg County, KY. **Cleveland MSA** is Bradley & Polk counties. **Jackson MSA** is Chester, Crockett, Gibson & Madison counties. **Johnson City MSA** is Carter, Unicoi, & Washington counties. **Kingsport-Bristol MSA** is Hawkins County, Sullivan County, Scott County, VA, Washington County, VA, & Bristol City, VA. **Morristown MSA** is Hamblen & Jefferson counties.

U.S. Consumer Price Index — February 2025

Group	All Urban Consumers			Urban Wage Earners & Clerical Workers		
	Index	Percent Change		Index	Percent Change	
		Monthly	Yearly		Monthly	Yearly
U.S. City Average						
All Items (1982-84=100)	319.082	0.4	2.8	312.460	0.4	2.7
Food and beverages	333.498	0.2	2.6	333.080	0.2	2.5
Housing	342.398	0.4	3.9	338.229	0.4	3.7
Apparel	132.774	3.4	0.6	132.597	3.2	0.0
Transportation	271.040	0.2	1.7	275.374	0.4	1.8
Medical care	573.320	0.2	2.9	581.189	0.2	2.9
South						
All Items (1982-84=100)	309.987	0.3	2.3	304.307	0.3	2.1
Food and beverages	328.168	0.3	2.5	327.372	0.3	2.4
Housing	320.187	0.3	3.3	320.976	0.2	3.2
Apparel	141.255	3.6	-1.6	140.854	3.3	-1.0
Transportation	272.026	0.1	0.5	271.476	0.2	0.7
Medical care	541.981	0.3	2.5	557.644	0.4	2.2

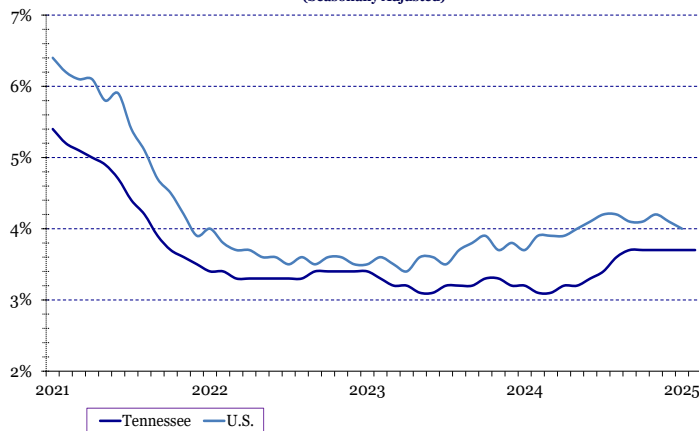
Hours and Earnings Of Production Workers

	Average Weekly Earnings			Average Hourly Earnings			Average Weekly Hours		
	Feb.	Jan.	Feb.	Feb.	Jan.	Feb.	Feb.	Jan.	Feb.
	2024	2025	2025	2024	2025	2025	2024	2025	2025
Manufacturing	\$991.60	\$948.64	\$997.04	\$24.79	\$24.20	\$24.20	40.0	39.2	41.2
Durable Goods Manufacturing	\$1,079.35	\$1,001.48	\$1,053.31	\$26.39	\$25.29	\$25.32	40.9	39.6	41.6
Non-Durable Goods Manufacturing	\$837.12	\$845.28	\$888.80	\$21.80	\$22.07	\$22.00	38.4	38.3	40.4

All Employee Hours and Earnings

	Average Weekly Earnings			Average Hourly Earnings			Average Weekly Hours		
	Feb.	Jan.	Feb.	Feb.	Jan.	Feb.	Feb.	Jan.	Feb.
	2024	2025	2025	2024	2025	2025	2024	2025	2025
Total Private	\$1,032.55	\$1,071.08	\$1,037.50	\$29.94	\$30.72	\$31.02	34.6	33.4	34.6
Goods-Producing	\$1,239.92	\$1,266.44	\$1,213.73	\$30.81	\$31.79	\$32.33	39.8	38.0	38.8
Mining, Logging & Construction	\$1,220.16	\$1,277.35	\$1,249.29	\$31.92	\$33.20	\$34.25	39.5	37.5	37.1
Manufacturing	\$1,246.48	\$1,262.00	\$1,196.58	\$30.31	\$31.16	\$31.52	39.9	38.3	39.5
Private Service-Providing	\$985.68	\$1,027.18	\$996.95	\$29.71	\$30.43	\$30.68	33.5	32.4	33.7
Trade, Transportation, & Utilities	\$917.07	\$879.37	\$854.91	\$27.17	\$27.14	\$26.78	33.5	31.5	32.6
Information	\$1,334.62	\$1,645.06	\$1,571.45	\$38.25	\$41.56	\$44.06	36.8	38.2	39.9
Financial Activities	\$1,418.33	\$1,503.81	\$1,461.59	\$40.04	\$38.47	\$39.77	37.6	37.1	37.8
Professional & Business Services	\$1,313.50	\$1,396.50	\$1,345.68	\$36.51	\$37.65	\$37.73	36.2	35.6	37.6
Private Education & Health Services	\$980.29	\$1,023.62	\$1,025.05	\$28.05	\$28.91	\$29.72	34.4	34.1	34.7
Leisure & Hospitality	\$475.17	\$517.59	\$477.20	\$18.97	\$19.31	\$19.20	26.4	24.7	26.4
Other Services	\$826.18	\$1,008.30	\$972.63	\$25.98	\$30.49	\$30.87	32.6	31.9	33.6

TENNESSEE & UNITED STATES
UNEMPLOYMENT RATES
(Seasonally Adjusted)



TENNESSEE & UNITED STATES
LABOR FORCE PARTICIPATION RATES
(Seasonally Adjusted)

