



# Tennessee Labor Market Report

Bill Lee  
Governor

Deniece Thomas  
Commissioner

April  
2025

## Highlights

**Pages 1-3:** 2024 Occupational Employment and Wages

**Page 4:** Tennessee annual average labor force statistics, and April county unemployment rates

**Pages 5-6:** Monthly Tennessee nonfarm employment, and MSA and city labor force data

**Pages 7-10:** Monthly nonfarm employment statistics for the four largest MSA's and graphs of the unemployment rates

**Page 11:** Monthly nonfarm employment for each small MSA in Tennessee

**Page 12:** Monthly consumer price index and hours and earnings for all workers by industry and production workers in manufacturing, graphs of Tennessee unemployment and labor force participation rates

## 2024 Tennessee Occupational Employment and Wages

The Tennessee Department of Labor and Workforce Development (TDLWD), in cooperation with the Bureau of Labor Statistics (BLS), produces annual estimates of occupational employment and wages. Using data collected by TDLWD from employers throughout Tennessee, the May 2024 occupational employment and wage estimates have been released.

Tennessee's May 2024 annual mean wage was \$58,700, up \$2,670 from \$56,030 in May 2023. The median wage in Tennessee also increased from \$43,820 in May 2023 to \$46,120 in May 2024.

Among the major occupational groups, the most jobs were in office and administrative support occupations. At 439,080 jobs, this was 13.4% of all jobs in Tennessee. The median annual wage in this group was \$43,830. Within this group, customer service representatives was the most common occupation at 64,880 jobs. This was the seventh highest employment of any occupation in the state. The median annual wage was \$40,130. The highest paying nonsupervisory occupation in this group was executive secretaries and executive administrative assistants with an annual median wage of \$65,660. Postal service clerks had the second highest median wage in this group among nonsupervisory occupations at \$63,270. Among the lowest paying occupations were hotel, motel and resort desk clerks (\$29,200) and library assistants, clerical (\$32,740).

The occupational group with the highest median annual wage was management occupations (\$107,060), while food preparation and serving related occupations were the lowest at \$29,290.

The occupation with the highest median annual wage, across all occupations, was family medicine physicians at \$229,050, followed by neurologists at 228,350. Healthcare practitioner occupations accounted for the four highest median wages in Tennessee. As a group, healthcare practitioners and technical occupations represented 216,160 jobs

statewide with a median annual wage of \$75,830. The lowest paying occupation in this group was veterinary technologists and technicians (\$36,940). At 67,990 employment, registered nurse was the most common occupation in this group, accounting for 31.5 percent of its total employment. The median annual wage for registered nurses was \$75,830.

The most common occupation in Tennessee was laborers, freight, stock, and material movers (111,240 employment), followed by retail salespersons (85,810) and fast food and counter workers (84,170).

The occupations with the lowest median annual wages in the state were door-to-door sales workers, news and street vendors and related workers (\$20,470), and bartenders (\$22,660).

Production occupations had a total employment 265,810 and a median annual wage of \$43,930. Power plant operators had the highest median wage at \$107,380 and a total employment of 550 statewide. Cutters and trimmers, hand had the lowest median annual wage in the group at \$30,400 and a total employment of 200. Miscellaneous assemblers and fabricators was the most common occupation with an employment of 59,290. The median annual wage for this occupation was \$42,680.

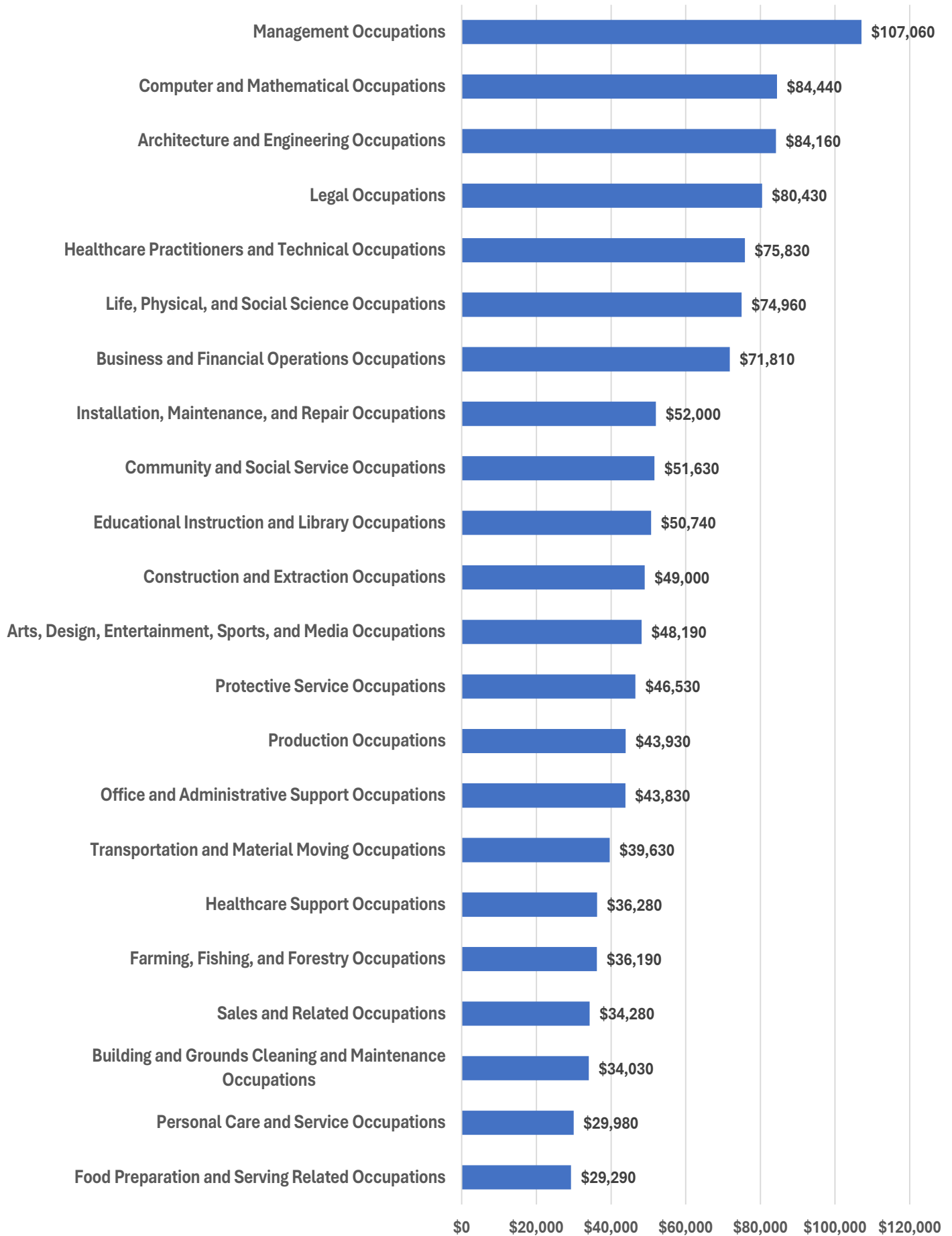
Across Tennessee's ten Metropolitan Statistical Areas (MSA's), the Nashville MSA's median wage of \$48,840 was the only one to eclipse the state median. The Nashville MSA also had a total employment of 1,096,500 representing about one-third of total statewide employment. The Cleveland MSA had the lowest median wage at \$39,650.

For more data and information from the May 2024 OEWS estimates, follow the links below.

<https://www.bls.gov/oes/tables.htm>

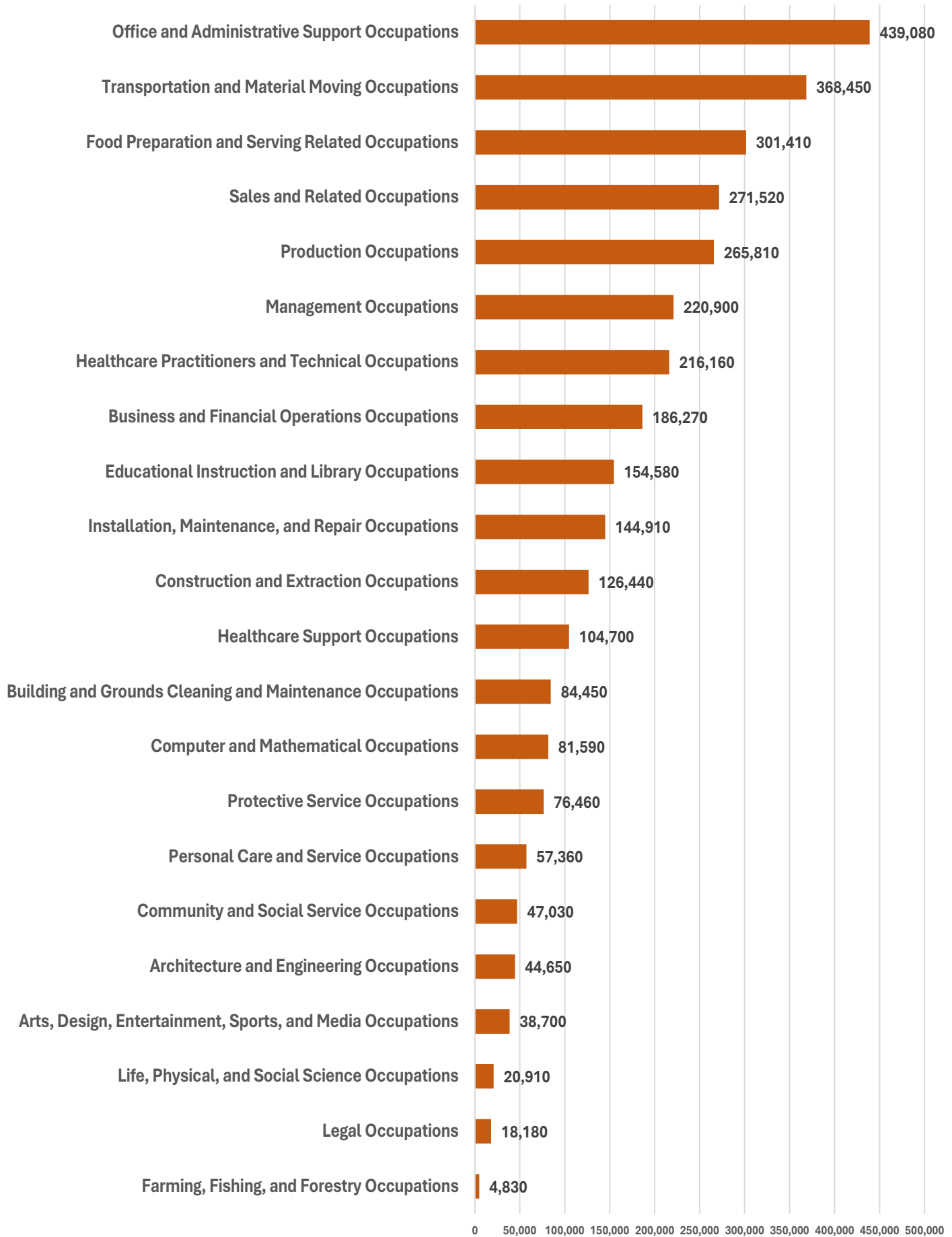
[https://www.bls.gov/oes/2024/may/oes\\_tec.htm](https://www.bls.gov/oes/2024/may/oes_tec.htm)

## 2024 Tennessee Median Annual Wage by Occupational Group



Source: Bureau of Labor Statistics

## 2024 Tennessee Occupational Employment by Major Group



Source: Bureau of Labor Statistics

# Tennessee Civilian Labor Workforce 1995-Present

# County Unemployment Rates\*

(NUMBERS IN THOUSANDS)

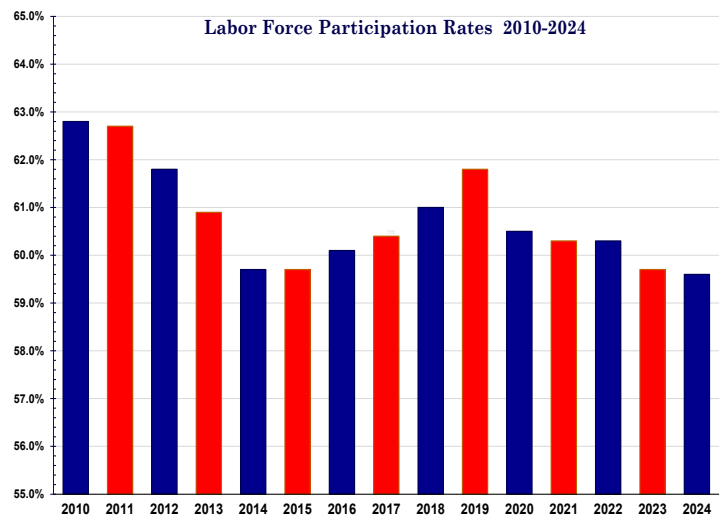
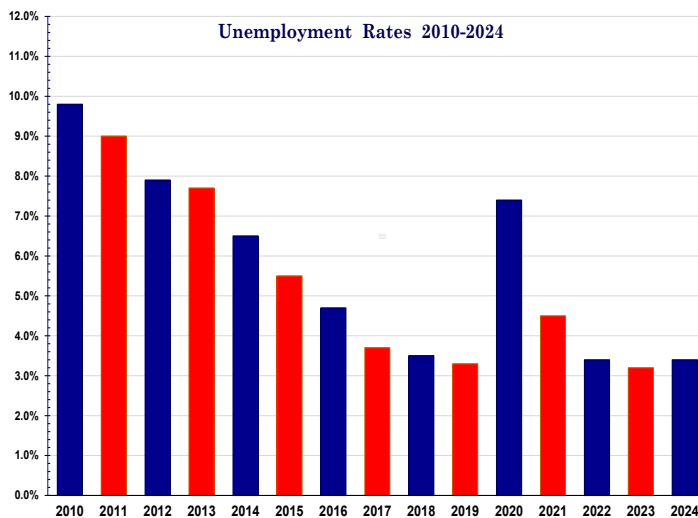
MONTHLY DATA NOT SEASONALLY ADJUSTED

Year and Month	Civilian noninstitutional population	Civilian Labor Force					
		Total	Participation Rate (%)	Employed		Unemployed	
				Total	Rate (%)	Total	Rate (%)
1995	4,074.0	2,719.0	66.7%	2,579.8	63.3%	139.3	5.1%
1996	4,148.2	2,758.8	66.5%	2,615.2	63.0%	143.6	5.2%
1997	4,216.7	2,775.2	65.8%	2,630.3	62.4%	145.0	5.2%
1998	4,270.1	2,804.4	65.7%	2,683.0	62.8%	121.4	4.3%
1999	4,314.7	2,835.9	65.7%	2,723.6	63.1%	112.3	4.0%
2000	4,357.9	2,845.3	65.3%	2,736.0	62.8%	109.3	3.8%
2001	4,402.5	2,858.1	64.9%	2,726.6	61.9%	131.5	4.6%
2002	4,447.3	2,898.3	65.2%	2,748.6	61.8%	149.8	5.2%
2003	4,495.8	2,907.1	64.7%	2,746.0	61.1%	161.0	5.5%
2004	4,546.2	2,899.8	63.8%	2,745.2	60.4%	154.6	5.3%
2005	4,616.0	2,899.8	62.8%	2,740.4	59.4%	159.5	5.5%
2006	4,699.5	3,015.6	64.2%	2,858.7	60.8%	156.9	5.2%
2007	4,768.4	3,047.7	63.9%	2,906.1	60.9%	141.6	4.6%
2008	4,831.3	3,067.9	63.5%	2,869.5	59.4%	198.4	6.5%
2009	4,879.4	3,050.4	62.5%	2,733.2	56.0%	317.2	10.4%
2010	4,928.4	3,094.8	62.8%	2,791.6	56.6%	303.2	9.8%
2011	4,973.9	3,119.2	62.7%	2,837.1	57.0%	282.2	9.0%
2012	5,021.2	3,102.5	61.8%	2,856.5	56.9%	246.0	7.9%
2013	5,065.8	3,086.0	60.9%	2,849.5	56.3%	236.4	7.7%
2014	5,111.4	3,052.6	59.7%	2,852.7	55.8%	199.9	6.5%
2015	5,161.2	3,078.8	59.7%	2,908.0	56.3%	170.9	5.5%
2016	5,216.3	3,135.2	60.1%	2,987.2	57.3%	148.0	4.7%
2017	5,274.9	3,187.8	60.4%	3,068.3	58.2%	119.5	3.7%
2018	5,331.4	3,250.0	61.0%	3,137.0	58.8%	113.1	3.5%
2019	5,384.7	3,329.4	61.8%	3,218.1	59.8%	111.4	3.3%
2020	5,443.9	3,294.8	60.5%	3,049.5	56.0%	245.3	7.4%
2021	5,498.3	3,316.9	60.3%	3,168.6	57.6%	148.3	4.5%
2022	5,578.0	3,361.7	60.3%	3,248.3	58.2%	113.4	3.4%
2023	5,661.6	3,380.1	59.7%	3,270.6	57.8%	109.5	3.2%
2024	5,739.4	3,420.4	59.6%	3,303.0	57.5%	117.4	3.4%
2025							
January	5,777.8	3,430.5	59.4%	3,300.3	57.1%	130.2	3.8%
February	5,782.4	3,436.7	59.4%	3,317.6	57.4%	119.1	3.5%
March (r)	5,787.5	3,464.9	59.9%	3,351.6	57.9%	113.3	3.3%
April (p)	5,792.5	3,493.8	60.3%	3,393.4	58.6%	100.5	2.9%
May							
June							
July							
August							
September							
October							
November							
December							

(r)=revised  
(p)=preliminary

County	Apr.	Apr.	County	Apr.	Apr.
	2024	2025		2024	2025
Anderson	2.7	2.7	Lauderdale	4.2	4.2
Bedford	2.4	2.6	Lawrence	3.0	3.2
Benton	3.8	3.9	Lewis	2.8	3.2
Bledsoe	2.5	2.5	Lincoln	2.7	2.9
Blount	2.4	2.5	Loudon	2.7	2.8
Bradley	3.0	3.1	Macon	2.3	2.5
Campbell	3.0	2.9	Madison	3.1	3.3
Cannon	2.6	2.6	Marion	3.0	3.4
Carroll	3.2	3.3	Marshall	2.8	2.9
Carter	3.2	3.5	Maury	2.4	2.6
Cheatham	2.4	2.4	McMinn	3.5	3.6
Chester	3.3	3.2	McNairy	3.2	3.5
Claiborne	3.3	3.3	Meigs	4.1	4.0
Clay	4.1	4.2	Monroe	3.1	3.1
Cocke	3.5	4.4	Montgomery	2.9	3.0
Coffee	2.8	3.0	Moore	2.8	2.7
Crockett	2.9	3.0	Morgan	3.3	3.3
Cumberland	3.8	3.7	Obion	3.0	3.0
Davidson	2.4	2.5	Overton	2.8	2.8
Decatur	3.5	3.4	Perry	4.5	4.0
DeKalb	3.3	3.3	Pickett	3.7	4.3
Dickson	2.3	2.5	Polk	2.9	3.1
Dyer	2.9	3.0	Putnam	2.6	2.8
Fayette	2.9	3.1	Rhea	3.2	3.3
Fentress	3.1	2.9	Roane	3.1	3.0
Franklin	3.2	3.1	Robertson	2.4	2.4
Gibson	3.0	3.1	Rutherford	2.3	2.3
Giles	3.1	3.5	Scott	3.4	3.1
Grainger	3.0	3.0	Sequatchie	3.1	3.3
Greene	3.3	3.8	Sevier	2.4	2.5
Grundy	3.5	3.7	Shelby	3.7	3.8
Hamblen	2.9	3.0	Smith	2.6	2.7
Hamilton	2.5	2.7	Stewart	3.2	3.2
Hancock	3.3	3.7	Sullivan	3.0	3.0
Hardeman	3.7	4.5	Sumner	2.3	2.5
Hardin	3.2	3.3	Tipton	3.1	3.1
Hawkins	3.4	3.5	Trousdale	2.1	2.5
Haywood	2.4	2.9	Unicoi	3.1	4.9
Henderson	3.2	3.1	Union	2.7	3.1
Henry	3.4	3.4	Van Buren	2.9	2.9
Hickman	2.5	2.7	Warren	3.0	3.2
Houston	3.5	3.5	Washington	2.6	2.7
Humphreys	3.0	3.0	Wayne	2.9	3.0
Jackson	3.3	3.4	Weakley	3.2	3.1
Jefferson	2.8	2.9	White	3.3	3.6
Johnson	3.8	5.1	Williamson	2.2	2.2
Knox	2.4	2.4	Wilson	2.3	2.4
Lake	3.1	4.3			

\*Data Not Seasonally Adjusted



# Statewide

## Estimated Nonfarm Employment (in thousands)

Industry	Apr. 2024	Revised Mar. 2025	Preliminary Apr. 2025	Net Change	
				Mar. 2025 Apr. 2025	Apr. 2024 Apr. 2025
Total Nonfarm	3374.7	3,377.4	<b>3,401.0</b>	23.6	26.3
Total Private	2915.1	2,908.5	<b>2,930.4</b>	21.9	15.3
Goods Producing	532.5	529.9	<b>527.0</b>	-2.9	-5.5
Mining, Logging & Construction	166.7	164.9	<b>164.8</b>	-0.1	-1.9
Mining & Logging	4.3	4.5	<b>4.6</b>	0.1	0.3
Construction	162.4	160.4	<b>160.2</b>	-0.2	-2.2
Construction of Buildings	33.6	34.1	<b>34.5</b>	0.4	0.9
Heavy and Civil Engineering	23.2	23.3	<b>23.6</b>	0.3	0.4
Specialty Trade Contractors	105.6	103.0	<b>102.1</b>	-0.9	-3.5
Manufacturing	365.8	365.0	<b>362.2</b>	-2.8	-3.6
Durable Goods Manufacturing	235.8	237.2	<b>235.3</b>	-1.9	-0.5
Wood Product Manufacturing	13.6	13.3	<b>13.2</b>	-0.1	-0.4
Nonmetallic Mineral Product Manufacturing	15.2	15.4	<b>15.3</b>	-0.1	0.1
Primary Metal Manufacturing	11.1	11.3	<b>11.2</b>	-0.1	0.1
Fabricated Metal Product Manufacturing	42.0	43.1	<b>42.8</b>	-0.3	0.8
Machinery Manufacturing	24.9	25.2	<b>25.1</b>	-0.1	0.2
Computer & Electronic Product Manufacturing	7.6	7.8	<b>7.8</b>	0.0	0.2
Electrical Equipment & Appliance Manufacturing	21.7	22.3	<b>22.2</b>	-0.1	0.5
Transportation Equipment Manufacturing	75.5	74.4	<b>73.5</b>	-0.9	-2.0
Furniture & Related Product Manufacturing	9.0	9.2	<b>9.1</b>	-0.1	0.1
Miscellaneous Manufacturing	15.2	15.2	<b>15.1</b>	-0.1	-0.1
Nondurable Goods Manufacturing	130.0	127.8	<b>126.9</b>	-0.9	-3.1
Food Manufacturing	40.9	40.6	<b>40.3</b>	-0.3	-0.6
Beverage & Tobacco Product Manufacturing	7.0	6.8	<b>6.7</b>	-0.1	-0.3
Paper Manufacturing	12.8	12.4	<b>12.3</b>	-0.1	-0.5
Printing & Related Support Activities	7.9	7.6	<b>7.6</b>	0.0	-0.3
Chemical Manufacturing	27.2	26.7	<b>26.6</b>	-0.1	-0.6
Plastics & Rubber Products Manufacturing	24.9	23.5	<b>23.4</b>	-0.1	-1.5
Service Providing	2842.2	2,847.5	<b>2,874.0</b>	26.5	31.8
Trade, Transportation, & Utilities	688.1	692.6	<b>696.8</b>	4.2	8.7
Wholesale Trade	136.6	137.4	<b>139.8</b>	2.4	3.2
Merchant Wholesalers, Durable Goods	80.8	80.7	<b>82.6</b>	1.9	1.8
Merchant Wholesalers, Nondurable Goods	48.9	49.8	<b>50.3</b>	0.5	1.4
Wholesale Trade Agents & Brokers	6.9	6.9	<b>6.9</b>	0.0	0.0
Retail Trade	343.5	346.5	<b>347.0</b>	0.5	3.5
Motor Vehicle & Parts Dealers	48.7	49.1	<b>48.5</b>	-0.6	-0.2
Building Material, Garden Equipment, & Supplies	34.8	34.9	<b>35.2</b>	0.3	0.4
Food & Beverage Retailers	60.2	61.0	<b>60.9</b>	-0.1	0.7
Furniture, Home Furnishings, Electronics, & Appliance	18.0	18.1	<b>18.0</b>	-0.1	0.0
General Merchandise Retailers	77.3	78.5	<b>79.2</b>	0.7	1.9
Health & Personal Care Retailers	24.2	23.4	<b>23.3</b>	-0.1	-0.9
Gasoline Stations & Fuel Dealers	26.2	26.1	<b>26.1</b>	0.0	-0.1
Clothing, Clothing Accessories, Shoe & Jewelry Retail	22.2	22.7	<b>22.5</b>	-0.2	0.3
Sporting Goods, Hobby, Music, & Book Retailers	31.9	32.7	<b>33.3</b>	0.6	1.4
Transportation, Warehousing, & Utilities	208.0	208.7	<b>210.0</b>	1.3	2.0
Utilities	4.4	4.5	<b>4.5</b>	0.0	0.1
Transportation & Warehousing	203.6	204.2	<b>205.5</b>	1.3	1.9
Truck Transportation	56.5	55.7	<b>56.4</b>	0.7	-0.1
Information	54.2	53.8	<b>54.2</b>	0.4	0.0
Financial Activities	191.9	191.3	<b>191.8</b>	0.5	-0.1
Finance & Insurance	147.1	147.2	<b>147.5</b>	0.3	0.4
Real Estate, Rental, & Leasing	44.8	44.1	<b>44.3</b>	0.2	-0.5
Professional & Business Services	454.9	447.9	<b>454.0</b>	6.1	-0.9
Professional, Scientific, & Technical Services	177.6	183.3	<b>185.1</b>	1.8	7.5
Management of Companies & Enterprises	57.7	58.2	<b>58.3</b>	0.1	0.6
Administrative, Support, & Waste Management	219.6	206.4	<b>210.6</b>	4.2	-9.0
Private Educational & Health Services	493.2	493.7	<b>496.0</b>	2.3	2.8
Private Educational Services	72.5	70.9	<b>71.2</b>	0.3	-1.3
Health Care & Social Assistance	420.7	422.8	<b>424.8</b>	2.0	4.1
Ambulatory Health Care Services	175.1	174.9	<b>174.5</b>	-0.4	-0.6
Hospitals	125.3	125.7	<b>126.6</b>	0.9	1.3
Nursing & Residential Care Facilities	61.3	63.3	<b>63.9</b>	0.6	2.6
Social Assistance	59.0	58.9	<b>59.8</b>	0.9	0.8
Leisure & Hospitality	368.8	364.9	<b>375.4</b>	10.5	6.6
Arts, Entertainment, & Recreation	49.9	48.3	<b>54.3</b>	6.0	4.4
Accommodation & Food Services	318.9	316.6	<b>321.1</b>	4.5	2.2
Accommodation	37.6	36.5	<b>36.8</b>	0.3	-0.8
Food Services & Drinking Places	281.3	280.1	<b>284.3</b>	4.2	3.0
Other Services	131.5	134.4	<b>135.2</b>	0.8	3.7
Government	459.6	468.9	<b>470.6</b>	1.7	11.0
Federal Government	57.7	59.1	<b>59.0</b>	-0.1	1.3
State Government	103.9	106.6	<b>107.0</b>	0.4	3.1
State Government Educational Services	61.7	63.6	<b>63.8</b>	0.2	2.1
State Government Excluding Educational Services	42.2	43.0	<b>43.2</b>	0.2	1.0
Local Government	298.0	303.2	<b>304.6</b>	1.4	6.6
Local Government Educational Services	153.0	154.2	<b>155.1</b>	0.9	2.1
Local Government Excluding Educational Services	145.0	149.0	<b>149.5</b>	0.5	4.5

## Nonfarm Employment Summary

### Monthly Employment Changes

Total Nonfarm	+23,600
Leisure & Hospitality	+10,500
Arts, Entertainment & Recreation	+6,000
Accommodation & Food Services	+4,500
Professional & Business Services	+6,100
Admin, Support & Waste Mgmt Svcs	+4,200
Trade, Transportation & Utilities	+4,200
Wholesale Trade	+2,400
Private Educational & Health Services	+2,300
Health Care & Social Assistance	+2,000
Local Government	+1,400
<b>Manufacturing</b>	<b>-2,800</b>
<b>Durable Goods Manufacturing</b>	<b>-1,900</b>
<b>Specialty Trade Contractors</b>	<b>-900</b>
<b>Motor Vehicle &amp; Parts Dealers</b>	<b>-800</b>

### Annual Changes

Total Nonfarm	+26,300
Government	+11,000
State Government	+6,600
Local Government	+3,100
Trade, Transportation & Utilities	+8,700
Professional, Scientific & Tech Services	+7,500
Leisure & Hospitality	+6,600
Health Care & Social Assistance	+4,100
<b>Admin, Support &amp; Waste Mgmt. Svcs.</b>	<b>-9,000</b>
<b>Specialty Trade Contractors</b>	<b>-3,500</b>

### Monthly Unemployment Rates Counties

Increased	1
Decreased	94
Unchanged	0
<b>Highest/Lowest Rate</b>	<b>Rate</b>
Williamson County	2.2%
Johnson County	5.1%

The data from all the nonfarm employment estimates tables include all full- and part-time nonfarm wage and salary employees who worked during or received pay for any part of the pay period that includes the 12th of the month. This is a count of jobs by place of work. Agricultural workers, proprietors, self-employed persons, workers in private households, and unpaid family workers are excluded. These numbers may not add due to rounding. Data are based on the 2024 benchmark.

# Civilian Labor Force

	April 2024				March 2025				April 2025			
	Labor Force	Employed	Unemployed	Rate	Labor Force	Employed	Unemployed	Rate	Labor Force	Employed	Unemployed	Rate
<b>Seasonally Adjusted</b>												
UNITED STATES	167,987,000	161,495,000	6,492,000	3.9	170,591,000	163,508,000	7,083,000	4.2	171,109,000	163,944,000	7,165,000	4.2
TENNESSEE	3,410,795	3,303,028	107,767	3.2	3,448,705	3,323,730	124,975	3.6	3,458,761	3,336,471	122,290	3.5
<b>Not Seasonally Adjusted</b>												
UNITED STATES	167,484,000	161,590,000	5,894,000	3.5	170,654,000	163,412,000	7,242,000	4.2	170,623,000	164,043,000	6,580,000	3.9
TENNESSEE	3,416,846	3,321,936	94,910	2.8	3,464,898	3,351,556	113,342	3.3	3,493,841	3,393,353	100,488	2.9
<b>Metropolitan Statistical Areas</b>												
Chattanooga	291,685	284,296	7,389	2.5	294,360	285,071	9,289	3.2	295,478	287,378	8,100	2.7
Clarksville	138,237	133,529	4,708	3.4	142,463	136,668	5,795	4.1	142,640	137,804	4,836	3.4
Cleveland	56,545	54,852	1,693	3.0	56,792	54,790	2,002	3.5	57,161	55,398	1,763	3.1
Jackson	78,036	75,625	2,411	3.1	79,385	76,453	2,932	3.7	79,811	77,262	2,549	3.2
Johnson City	97,473	94,773	2,700	2.8	98,702	95,424	3,278	3.3	99,463	96,412	3,051	3.1
Kingsport-Bristol	132,736	128,821	3,915	2.9	134,590	129,833	4,757	3.5	134,933	130,523	4,410	3.3
Knoxville	453,359	441,798	11,561	2.6	460,734	447,302	13,432	2.9	464,061	452,169	11,892	2.6
Memphis	624,867	604,602	20,265	3.2	630,369	603,783	26,586	4.2	634,840	611,257	23,583	3.7
Morristown	53,485	51,970	1,515	2.8	55,026	53,192	1,834	3.3	55,126	53,506	1,620	2.9
Nashville-Murfreesboro	1,158,813	1,131,661	27,152	2.3	1,178,544	1,146,328	32,216	2.7	1,190,728	1,161,942	28,786	2.4
<b>Microropolitan Statistical Areas</b>												
Athens	25,041	24,133	908	3.6	25,290	24,209	1,081	4.3	25,358	24,429	929	3.7
Cookeville	63,914	62,105	1,809	2.8	64,780	62,578	2,202	3.4	65,020	63,080	1,940	3.0
Crossville	22,888	22,022	866	3.8	23,237	22,224	1,013	4.4	23,402	22,542	860	3.7
Dyersburg	17,884	17,374	510	2.9	18,249	17,650	599	3.3	18,381	17,835	546	3.0
Fayetteville	16,600	16,149	451	2.7	16,743	16,187	556	3.3	16,828	16,335	493	2.9
Greeneville	28,398	27,454	944	3.3	28,522	27,330	1,192	4.2	28,731	27,649	1,082	3.8
Lawrenceburg	18,898	18,339	559	3.0	19,187	18,496	691	3.6	19,361	18,737	624	3.2
Lewisburg	16,264	15,813	451	2.8	16,663	16,146	517	3.1	16,824	16,333	491	2.9
Martin	13,998	13,549	449	3.2	14,037	13,546	491	3.5	14,112	13,668	444	3.1
McMinnville	17,124	16,614	510	3.0	17,182	16,562	620	3.6	17,224	16,669	555	3.2
Newport	14,823	14,301	522	3.5	14,974	14,211	763	5.1	15,133	14,472	661	4.4
Paris	12,433	12,016	417	3.4	12,931	12,422	509	3.9	12,952	12,517	435	3.4
Sevierville	52,194	50,965	1,229	2.4	51,034	49,309	1,725	3.4	52,737	51,424	1,313	2.5
Shelbyville	25,706	25,097	609	2.4	25,912	25,162	750	2.9	26,136	25,452	684	2.6
Tullahoma-Manchester	29,506	28,689	817	2.8	29,613	28,652	961	3.2	29,762	28,886	876	2.9
Union City	13,490	13,084	406	3.0	13,656	13,198	458	3.4	13,861	13,446	415	3.0
Winchester	18,374	17,792	582	3.2	18,423	17,800	623	3.4	18,571	17,995	576	3.1
<b>Cities</b>												
Bartlett	27,497	26,671	826	3.0	27,551	26,652	899	3.3	27,857	27,039	818	2.9
Brentwood	22,392	21,888	504	2.3	22,700	22,144	556	2.4	22,972	22,446	526	2.3
Bristol	12,374	11,995	379	3.1	12,597	12,182	415	3.3	12,664	12,288	376	3.0
Chattanooga	96,550	94,042	2,508	2.6	97,905	94,704	3,201	3.3	98,527	95,624	2,903	2.9
Clarksville	75,508	73,214	2,294	3.0	77,891	75,068	2,823	3.6	78,386	75,872	2,514	3.2
Cleveland	21,268	20,618	650	3.1	21,420	20,592	828	3.9	21,535	20,822	713	3.3
Collierville	24,886	24,263	623	2.5	25,006	24,245	761	3.0	25,263	24,597	666	2.6
Columbia	24,047	23,454	593	2.5	24,567	23,765	802	3.3	24,826	24,091	735	3.0
Cookeville	16,439	16,013	426	2.6	16,609	16,064	545	3.3	16,664	16,179	485	2.9
Farragut	12,875	12,585	290	2.3	13,076	12,738	338	2.6	13,189	12,880	309	2.3
Franklin	49,045	47,958	1,087	2.2	49,721	48,519	1,202	2.4	50,243	49,180	1,063	2.1
Gallatin	26,341	25,668	673	2.6	26,852	26,008	844	3.1	27,129	26,360	769	2.8
Germantown	18,305	17,847	458	2.5	18,357	17,834	523	2.8	18,582	18,093	489	2.6
Hendersonville	35,563	34,718	845	2.4	36,139	35,178	961	2.7	36,507	35,655	852	2.3
Jackson	29,203	28,236	967	3.3	29,705	28,534	1,171	3.9	29,898	28,856	1,042	3.5
Johnson City	36,118	35,195	923	2.6	36,552	35,439	1,113	3.0	36,781	35,807	974	2.6
Kingsport	23,615	22,911	704	3.0	24,157	23,269	888	3.7	24,256	23,471	785	3.2
Knoxville	101,373	98,768	2,605	2.6	102,963	99,972	2,991	2.9	103,776	101,091	2,685	2.6
LaVergne	22,013	21,494	519	2.4	22,408	21,789	619	2.8	22,619	22,085	534	2.4
Lebanon	24,879	24,282	597	2.4	25,407	24,613	794	3.1	25,642	24,956	686	2.7
Maryville	15,752	15,392	360	2.3	16,025	15,588	437	2.7	16,129	15,756	373	2.3
Memphis	283,423	271,983	11,440	4.0	285,509	271,786	13,723	4.8	287,652	275,731	11,921	4.1
Morristown	12,629	12,238	391	3.1	13,002	12,525	477	3.7	13,005	12,603	402	3.1
Mt. Juliet	23,389	22,852	537	2.3	23,774	23,164	610	2.6	24,051	23,486	565	2.3
Murfreesboro	95,796	93,549	2,247	2.3	97,540	94,833	2,707	2.8	98,525	96,123	2,402	2.4
Nashville	416,516	406,457	10,059	2.4	423,433	411,500	11,933	2.8	427,842	417,213	10,629	2.5
Oak Ridge	14,643	14,237	406	2.8	14,908	14,405	503	3.4	14,976	14,566	410	2.7
Shelbyville	12,646	12,357	289	2.3	12,745	12,389	356	2.8	12,854	12,532	322	2.5
Smyrna	32,164	31,410	754	2.3	32,680	31,842	838	2.6	33,061	32,275	786	2.4
Spring Hill	32,059	31,385	674	2.1	32,546	31,770	776	2.4	32,942	32,204	738	2.2

# Chattanooga MSA

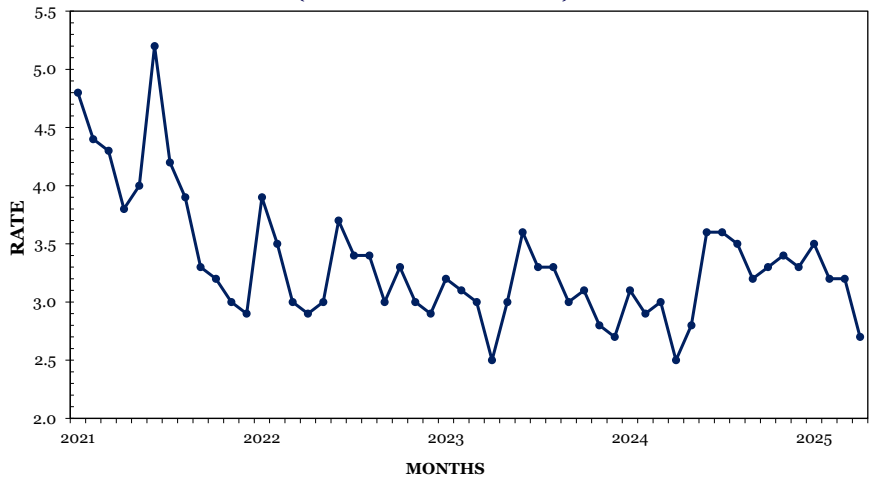
## Monthly Employment Changes

Total Nonfarm	+600
Leisure & Hospitality	+700
Trade, Transportation & Utilities	+300
Professional & Business Services	+200
Private Education & Health Services	+100
Other Services	+100
Manufacturing	-400
Government	-200

## Annual Employment Changes

Total Nonfarm	+300
Goods-Producing	-400
Service-Providing	+700

## CHATTANOOGA MSA UNEMPLOYMENT RATES (NOT SEASONALLY ADJUSTED)



## Estimated Nonfarm Employment (in thousands)

Industry	Apr. 2024	Revised Mar. 2025	Preliminary Apr. 2025	Net Change	
				Mar. 2025 Apr. 2025	Apr. 2024 Apr. 2025
Total Nonfarm	296.1	295.8	<b>296.4</b>	0.6	0.3
Total Private	262.7	262.3	<b>263.1</b>	0.8	0.4
Goods-Producing	55.4	55.5	<b>55.0</b>	-0.5	-0.4
Mining, Logging, & Construction	14.1	14.7	<b>14.6</b>	-0.1	0.5
Manufacturing	41.3	40.8	<b>40.4</b>	-0.4	-0.9
Durable Goods Manufacturing	26.8	26.6	<b>26.3</b>	-0.3	-0.5
Nondurable Goods Manufacturing	14.5	14.2	<b>14.1</b>	-0.1	-0.4
Service-Providing	240.7	240.3	<b>241.4</b>	1.1	0.7
Trade, Transportation, & Utilities	54.4	54.6	<b>54.9</b>	0.3	0.5
Wholesale Trade	8.8	9.0	<b>9.2</b>	0.2	0.4
Retail Trade	28.7	29.1	<b>29.1</b>	0.0	0.4
Transportation, Warehousing, & Utilities	16.9	16.5	<b>16.6</b>	0.1	-0.3
Information	3.4	3.3	<b>3.3</b>	0.0	-0.1
Financial Activities	28.5	28.7	<b>28.6</b>	-0.1	0.1
Professional & Business Services	31.4	30.7	<b>30.9</b>	0.2	-0.5
Private Education & Health Services	44.8	45.4	<b>45.5</b>	0.1	0.7
Leisure & Hospitality	31.8	30.6	<b>31.3</b>	0.7	-0.5
Other Services	13.0	13.5	<b>13.6</b>	0.1	0.6
Government	33.4	33.5	<b>33.3</b>	-0.2	-0.1
Federal Government	6.2	6.3	<b>6.2</b>	-0.1	0.0
State Government	6.8	7.3	<b>7.2</b>	-0.1	0.4
Local Government	20.4	19.9	<b>19.9</b>	0.0	-0.5

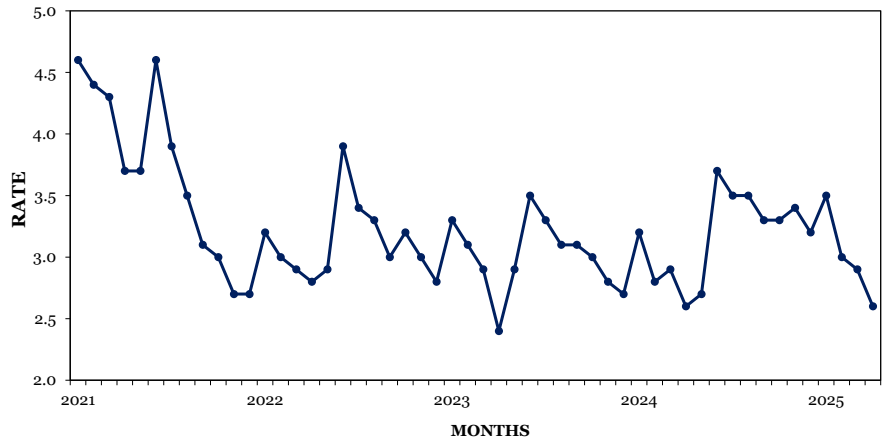
Chattanooga MSA: Hamilton County, Marion County, Sequatchie County, Catoosa County, GA, Dade County, GA, & Walker County, GA

# Knoxville MSA

## Monthly Employment Changes

Total Nonfarm	+2,200
Professional & Business Services	+1,400
Leisure & Hospitality	+400
Wholesale Trade	+400
State Government	+400
Private Education & Health Services	+100
Other Services	+100
<b>Manufacturing</b>	<b>-400</b>
<b>Annual Employment Changes</b>	
Total Nonfarm	+3,700
<b>Goods-Producing</b>	<b>-200</b>
Service-Providing	+3,900

## KNOXVILLE MSA UNEMPLOYMENT RATES (NOT SEASONALLY ADJUSTED)



## Estimated Nonfarm Employment (in thousands)

Industry	Apr. 2024	Revised	Preliminary	Net Change	
		Mar. 2025	Apr. 2025	Mar. 2025 Apr. 2025	Apr. 2024 Apr. 2025
Total Nonfarm	451.7	453.2	<b>455.4</b>	2.2	3.7
Total Private	388.1	390.2	<b>392.0</b>	1.8	3.9
Goods-Producing	67.6	67.8	<b>67.4</b>	-0.4	-0.2
Mining, Logging, & Construction	21.9	22.3	<b>22.3</b>	0.0	0.4
Manufacturing	45.7	45.5	<b>45.1</b>	-0.4	-0.6
Durable Goods Manufacturing	34.5	34.8	<b>34.5</b>	-0.3	0.0
Nondurable Goods Manufacturing	11.2	10.7	<b>10.6</b>	-0.1	-0.6
Service-Providing	384.1	385.4	<b>388.0</b>	2.6	3.9
Trade, Transportation, & Utilities	89.1	90.7	<b>90.9</b>	0.2	1.8
Wholesale Trade	19.6	20.1	<b>20.5</b>	0.4	0.9
Retail Trade	51.4	51.6	<b>51.5</b>	-0.1	0.1
Transportation, Warehousing, & Utilities	18.1	19.0	<b>18.9</b>	-0.1	0.8
Information	6.4	6.1	<b>6.1</b>	0.0	-0.3
Financial Activities	24.1	23.8	<b>23.8</b>	0.0	-0.3
Professional & Business Services	72.5	71.2	<b>72.6</b>	1.4	0.1
Private Education & Health Services	62.5	64.5	<b>64.6</b>	0.1	2.1
Leisure & Hospitality	48.6	48.4	<b>48.8</b>	0.4	0.2
Other Services	17.3	17.7	<b>17.8</b>	0.1	0.5
Government	63.6	63.0	<b>63.4</b>	0.4	-0.2
Federal Government	5.7	5.8	<b>5.8</b>	0.0	0.1
State Government	21.4	20.7	<b>21.1</b>	0.4	-0.3
Local Government	36.5	36.5	<b>36.5</b>	0.0	0.0

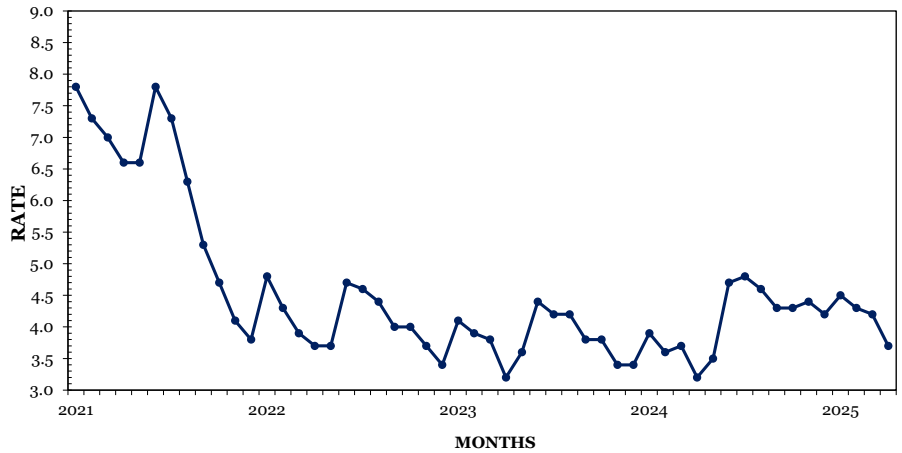
Knoxville MSA: Anderson County, Blount County, Campbell County, Grainger County, Knox County, Loudon County, Morgan County, Roane County, Union County

# Memphis MSA

## Monthly Employment Changes

Total Nonfarm	+5,600
Private Education & Health Services	+2,200
Leisure & Hospitality	+1,500
Trade, Transportation & Utilities	+1,300
Professional & Business Services	+900
Admin, Support & Waste Mgmt Svcs	+700
<b>Government</b>	<b>-300</b>
<b>Manufacturing</b>	<b>-200</b>
<b>Annual Employment Changes</b>	
Total Nonfarm	-1,400
Goods-Producing	-2,100
Service-Providing	+700

## MEMPHIS MSA UNEMPLOYMENT RATES (NOT SEASONALLY ADJUSTED)



## Estimated Nonfarm Employment (in thousands)

Industry	Apr. 2024	Revised Mar. 2025	Preliminary Apr. 2025	Net Change Mar. 2025 - Apr. 2025	Net Change Apr. 2024 - Apr. 2025
Total Nonfarm	661.6	654.6	<b>660.2</b>	5.6	-1.4
Total Private	574.2	566.2	<b>572.1</b>	5.9	-2.1
Goods-Producing	66.4	64.5	<b>64.3</b>	-0.2	-2.1
Mining, Logging, & Construction	25.3	24.4	<b>24.4</b>	0.0	-0.9
Manufacturing	41.1	40.1	<b>39.9</b>	-0.2	-1.2
Durable Goods Manufacturing	23.9	23.7	<b>23.6</b>	-0.1	-0.3
Nondurable Goods Manufacturing	17.2	16.4	<b>16.3</b>	-0.1	-0.9
Service-Providing	595.2	590.1	<b>595.9</b>	5.8	0.7
Trade, Transportation, & Utilities	191.4	188.9	<b>190.2</b>	1.3	-1.2
Wholesale Trade	38.4	39.3	<b>40.0</b>	0.7	1.6
Retail Trade	61.0	61.0	<b>61.0</b>	0.0	0.0
Transportation, Warehousing, & Utilities	92.0	88.6	<b>89.2</b>	0.6	-2.8
Information	5.3	5.1	<b>5.2</b>	0.1	-0.1
Financial Activities	29.6	29.9	<b>29.9</b>	0.0	0.3
Professional & Business Services	90.0	88.3	<b>89.2</b>	0.9	-0.8
Professional, Scientific, & Technical Services	27.8	29.3	<b>29.4</b>	0.1	1.6
Management of Companies & Enterprises	9.6	9.6	<b>9.7</b>	0.1	0.1
Administrative, Support, & Waste Management	52.6	49.4	<b>50.1</b>	0.7	-2.5
Private Education & Health Services	100.2	100.0	<b>102.2</b>	2.2	2.0
Leisure & Hospitality	63.3	61.2	<b>62.7</b>	1.5	-0.6
Other Services	28.0	28.3	<b>28.4</b>	0.1	0.4
Government	87.4	88.4	<b>88.1</b>	-0.3	0.7
Federal Government	16.4	16.5	<b>16.4</b>	-0.1	0.0
State Government	16.2	16.2	<b>16.1</b>	-0.1	-0.1
Local Government	54.8	55.7	<b>55.6</b>	-0.1	0.8

Memphis MSA: Fayette County, Shelby County, Tipton County, Benton County, MS, DeSoto County, MS, Marshall County, MS, Tate County, MS, Tunica County, MS, Crittenden County, AR

# Nashville MSA

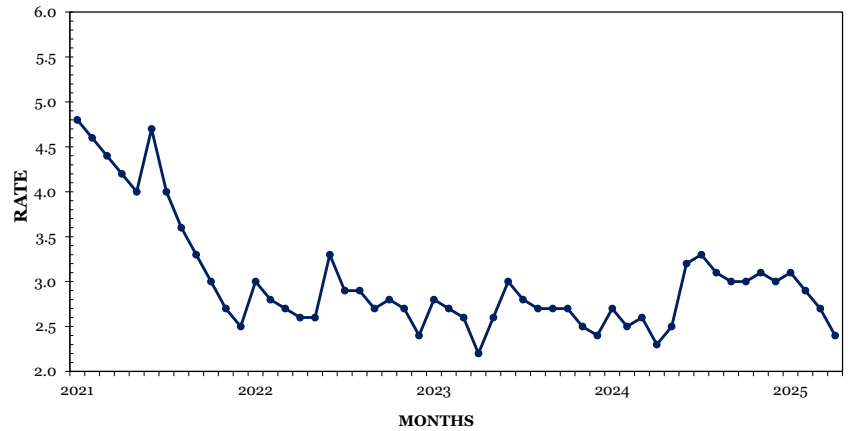
## Monthly Employment Changes

Total Nonfarm	+8,900
Leisure & Hospitality	+5,300
Professional & Business Services	+2,600
Trade, Transportation & Utilities	+2,200
Private Education & Health Services	+600
Local Government	-1,100
Mining, Logging & Construction	-900
Manufacturing	-600

## Annual Employment Changes

Total Nonfarm	+14,200
Goods-Producing	-2,700
Service-Providing	+16,900

## NASHVILLE MSA UNEMPLOYMENT RATES (NOT SEASONALLY ADJUSTED)



## Estimated Nonfarm Employment (in thousands)

Industry	Apr. 2024	Revised Mar. 2025	Preliminary Apr. 2025	Net Change Mar. 2025 Apr. 2025	Net Change Apr. 2024 Apr. 2025
Total Nonfarm	1,182.2	1,187.5	<b>1,196.4</b>	8.9	14.2
Total Private	1,051.1	1,050.7	<b>1,060.7</b>	10.0	9.6
Goods-Producing	153.6	152.4	<b>150.9</b>	-1.5	-2.7
Mining, Logging, & Construction	64.7	63.9	<b>63.0</b>	-0.9	-1.7
Manufacturing	88.9	88.5	<b>87.9</b>	-0.6	-1.0
Durable Goods Manufacturing	63.5	64.0	<b>63.6</b>	-0.4	0.1
Nondurable Goods Manufacturing	25.4	24.5	<b>24.3</b>	-0.2	-1.1
Service-Providing	1,028.6	1,035.1	<b>1,045.5</b>	10.4	16.9
Trade, Transportation, & Utilities	226.3	230.9	<b>233.1</b>	2.2	6.8
Wholesale Trade	50.3	50.4	<b>51.4</b>	1.0	1.1
Retail Trade	106.1	107.3	<b>108.0</b>	0.7	1.9
Transportation, Warehousing, & Utilities	69.9	73.2	<b>73.7</b>	0.5	3.8
Information	31.3	31.2	<b>31.3</b>	0.1	0.0
Financial Activities	80.9	80.0	<b>80.3</b>	0.3	-0.6
Professional & Business Services	195.5	191.3	<b>193.9</b>	2.6	-1.6
Professional, Scientific, & Technical Services	83.8	85.1	<b>86.0</b>	0.9	2.2
Management of Companies & Enterprises	30.5	30.5	<b>30.6</b>	0.1	0.1
Administrative, Support, & Waste Management	81.2	75.7	<b>77.3</b>	1.6	-3.9
Private Education & Health Services	179.5	180.2	<b>180.8</b>	0.6	1.3
Private Educational Services	34.0	33.7	<b>33.9</b>	0.2	-0.1
Health Care & Social Assistance	145.5	146.5	<b>146.9</b>	0.4	1.4
Leisure & Hospitality	134.5	133.6	<b>138.9</b>	5.3	4.4
Other Services	49.5	51.1	<b>51.5</b>	0.4	2.0
Government	131.1	136.8	<b>135.7</b>	-1.1	4.6
Federal Government	16.6	16.8	<b>16.8</b>	0.0	0.2
State Government	31.8	32.6	<b>32.6</b>	0.0	0.8
Local Government	82.7	87.4	<b>86.3</b>	-1.1	3.6

**Nashville MSA:** Cannon County, Cheatham County, Davidson County, Dickson County, Hickman County, Macon County, Maury County, Robertson County, Rutherford County, Smith County, Sumner County, Trousdale County, Williamson County, Wilson County



## Nonfarm Employment (Smaller MSAs)

	Clarksville, TN-KY MSA		Cleveland, TN MSA		Jackson, TN MSA	
	Mar. 2025 Revised	Apr. 2025 Prelim.	Mar. 2025 Revised	Apr. 2025 Prelim.	Mar. 2025 Revised	Apr. 2025 Prelim.
Total Nonfarm	108,400	<b>108,800</b>	46,700	<b>47,000</b>	88,600	<b>89,100</b>
Total Private	85,800	<b>86,200</b>	41,000	<b>41,300</b>	71,300	<b>71,700</b>
Goods Producing	18,900	<b>18,900</b>	10,100	<b>10,000</b>	19,300	<b>19,400</b>
Mining, Logging & Construction	4,900	<b>4,900</b>	2,200	<b>2,200</b>	4,300	<b>4,400</b>
Manufacturing	14,000	<b>14,000</b>	7,900	<b>7,800</b>	15,000	<b>15,000</b>
Service Providing	89,500	<b>89,900</b>	36,600	<b>37,000</b>	69,300	<b>69,700</b>
Trade, Transportation, & Utilities	21,100	<b>21,300</b>	10,100	<b>10,100</b>	16,800	<b>16,900</b>
Wholesale Trade	2,500	<b>2,600</b>	1,300	<b>1,300</b>	3,500	<b>3,500</b>
Retail Trade	14,000	<b>14,100</b>	5,700	<b>5,700</b>	9,800	<b>9,900</b>
Transportation, Warehousing, & Utilities	4,600	<b>4,600</b>	3,100	<b>3,100</b>	3,500	<b>3,500</b>
Information	1,400	<b>1,400</b>	400	<b>400</b>	700	<b>700</b>
Financial Activities	4,100	<b>4,100</b>	1,500	<b>1,500</b>	3,300	<b>3,300</b>
Professional & Business Services	9,200	<b>9,300</b>	4,000	<b>4,100</b>	7,100	<b>7,200</b>
Private Educational & Health Services	14,300	<b>14,300</b>	7,300	<b>7,300</b>	13,500	<b>13,400</b>
Leisure & Hospitality	13,100	<b>13,200</b>	5,100	<b>5,300</b>	7,800	<b>8,000</b>
Other Services	3,700	<b>3,700</b>	2,500	<b>2,600</b>	2,800	<b>2,800</b>
Government	22,600	<b>22,600</b>	5,700	<b>5,700</b>	17,300	<b>17,400</b>
Federal Government	5,700	<b>5,700</b>	400	<b>400</b>	700	<b>700</b>
State Government	3,500	<b>3,500</b>	700	<b>700</b>	1,800	<b>1,900</b>
Local Government	13,400	<b>13,400</b>	4,600	<b>4,600</b>	14,800	<b>14,800</b>

	Johnson City, TN MSA		Kingsport-Bristol, TN-VA MSA		Morristown, TN MSA	
	Mar. 2025 Revised	Apr. 2025 Prelim.	Mar. 2025 Revised	Apr. 2025 Prelim.	Mar. 2025 Revised	Apr. 2025 Prelim.
Total Nonfarm	87,300	<b>88,000</b>	126,200	<b>126,200</b>	51,200	<b>51,400</b>
Total Private	69,100	<b>69,700</b>	109,400	<b>109,600</b>	43,800	<b>44,000</b>
Goods Producing	11,500	<b>11,600</b>	27,700	<b>27,600</b>	14,800	<b>14,800</b>
Mining, Logging & Construction	3,100	<b>3,200</b>	6,900	<b>6,900</b>	2,400	<b>2,500</b>
Manufacturing	8,400	<b>8,400</b>	20,800	<b>20,700</b>	12,400	<b>12,300</b>
Service Providing	75,800	<b>76,400</b>	98,500	<b>98,600</b>	36,400	<b>36,600</b>
Trade, Transportation, & Utilities	14,700	<b>14,800</b>	24,100	<b>24,000</b>	10,000	<b>10,000</b>
Wholesale Trade	3,000	<b>3,100</b>	3,500	<b>3,500</b>	1,300	<b>1,400</b>
Retail Trade	10,600	<b>10,600</b>	15,700	<b>15,600</b>	6,100	<b>6,000</b>
Transportation, Warehousing, & Utilities	1,100	<b>1,100</b>	4,900	<b>4,900</b>	2,600	<b>2,600</b>
Information	800	<b>800</b>	1,300	<b>1,300</b>	300	<b>300</b>
Financial Activities	3,600	<b>3,700</b>	4,300	<b>4,300</b>	1,100	<b>1,100</b>
Professional & Business Services	9,700	<b>9,900</b>	13,400	<b>13,500</b>	5,000	<b>5,100</b>
Private Educational & Health Services	15,600	<b>15,500</b>	18,800	<b>18,700</b>	6,600	<b>6,600</b>
Leisure & Hospitality	10,300	<b>10,500</b>	13,800	<b>14,200</b>	4,500	<b>4,600</b>
Other Services	2,900	<b>2,900</b>	6,000	<b>6,000</b>	1,500	<b>1,500</b>
Government	18,200	<b>18,300</b>	16,800	<b>16,600</b>	7,400	<b>7,400</b>
Federal Government	3,300	<b>3,400</b>	900	<b>900</b>	300	<b>300</b>
State Government	6,600	<b>6,600</b>	2,600	<b>2,600</b>	1,500	<b>1,600</b>
Local Government	8,300	<b>8,300</b>	13,300	<b>13,100</b>	5,600	<b>5,500</b>

**Clarksville MSA** is Montgomery County, Stewart County, Christian County, KY, & Trigg County, KY. **Cleveland MSA** is Bradley & Polk counties. **Jackson MSA** is Chester, Crockett, Gibson & Madison counties. **Johnson City MSA** is Carter, Unicoi, & Washington counties. **Kingsport-Bristol MSA** is Hawkins County, Sullivan County, Scott County, VA, Washington County, VA, & Bristol City, VA. **Morristown MSA** is Hamblen & Jefferson counties.

## U.S. Consumer Price Index — April 2025

Group	All Urban Consumers			Urban Wage Earners & Clerical Workers		
	Index	Percent Change		Index	Percent Change	
		Monthly	Yearly		Monthly	Yearly
<b>U.S. City Average</b>						
All Items (1982-84=100)	320.795	0.3	2.3	314.243	0.3	2.1
Food and beverages	334.918	0.0	2.7	334.475	0.0	2.7
Housing	344.801	0.4	4.0	340.673	0.3	3.9
Apparel	132.544	-1.1	-0.7	132.465	-1.1	-1.0
Transportation	272.503	0.9	-1.5	277.277	1.0	-1.7
Medical care	576.988	0.4	2.7	584.610	0.4	2.8
<b>South</b>						
All Items (1982-84=100)	311.087	0.3	2.0	305.249	0.3	1.6
Food and beverages	329.159	0.1	2.5	328.283	0.1	2.4
Housing	322.648	0.3	3.8	323.396	0.3	3.7
Apparel	142.585	-0.6	-1.5	141.188	-0.8	-2.2
Transportation	271.702	0.8	-2.1	270.942	0.9	-2.2
Medical care	543.438	0.6	2.6	558.258	0.5	2.3

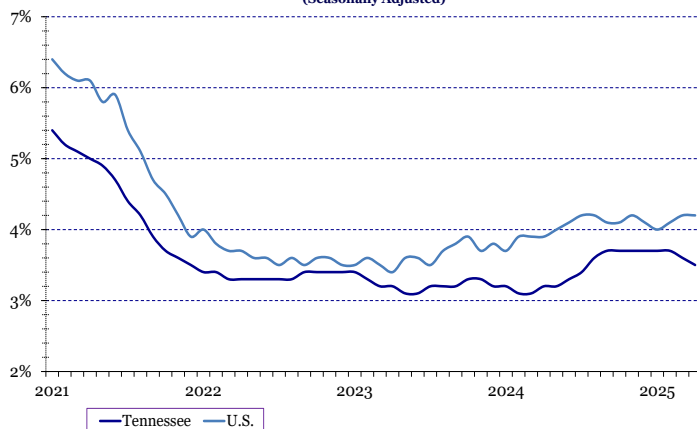
## Hours and Earnings Of Production Workers

	Average Weekly Earnings			Average Hourly Earnings			Average Weekly Hours		
	Apr.	Mar.	Apr.	Apr.	Mar.	Apr.	Apr.	Mar.	Apr.
	2024	2025	2025	2024	2025	2025	2024	2025	2025
Manufacturing	\$977.34	\$1,010.65	<b>\$983.69</b>	\$25.06	\$24.59	<b>\$24.47</b>	39.0	41.1	<b>40.2</b>
Durable Goods Manufacturing	\$1,050.80	\$1,065.02	<b>\$1,036.59</b>	\$26.67	\$25.85	<b>\$25.85</b>	39.4	41.2	<b>40.1</b>
Non-Durable Goods Manufacturing	\$847.96	\$906.17	<b>\$883.78</b>	\$22.14	\$22.21	<b>\$21.93</b>	38.3	40.8	<b>40.3</b>

## All Employee Hours and Earnings

	Average Weekly Earnings			Average Hourly Earnings			Average Weekly Hours		
	Apr.	Mar.	Apr.	Apr.	Mar.	Apr.	Apr.	Mar.	Apr.
	2024	2025	2025	2024	2025	2025	2024	2025	2025
Total Private	\$1,027.87	\$1,074.22	<b>\$1,052.32</b>	\$29.88	\$30.78	<b>\$30.68</b>	34.4	34.9	<b>34.3</b>
Goods-Producing	\$1,217.66	\$1,271.51	<b>\$1,251.80</b>	\$31.71	\$32.19	<b>\$32.18</b>	38.4	39.5	<b>38.9</b>
Mining, Logging & Construction	\$1,310.79	\$1,336.48	<b>\$1,334.19</b>	\$33.61	\$33.58	<b>\$34.21</b>	39.0	39.8	<b>39.0</b>
Manufacturing	\$1,177.32	\$1,243.07	<b>\$1,215.63</b>	\$30.82	\$31.55	<b>\$31.25</b>	38.2	39.4	<b>38.9</b>
Private Service-Providing	\$988.51	\$1,028.20	<b>\$1,008.66</b>	\$29.42	\$30.42	<b>\$30.29</b>	33.6	33.8	<b>33.3</b>
Trade, Transportation, & Utilities	\$903.17	\$887.97	<b>\$865.42</b>	\$26.88	\$26.99	<b>\$26.96</b>	33.6	32.9	<b>32.1</b>
Information	\$1,442.89	\$1,780.34	<b>\$1,717.27</b>	\$38.58	\$44.62	<b>\$43.92</b>	37.4	39.9	<b>39.1</b>
Financial Activities	\$1,452.20	\$1,395.74	<b>\$1,393.48</b>	\$38.52	\$36.73	<b>\$37.56</b>	37.7	38.0	<b>37.1</b>
Professional & Business Services	\$1,311.13	\$1,405.71	<b>\$1,377.89</b>	\$36.02	\$37.09	<b>\$37.14</b>	36.4	37.9	<b>37.1</b>
Private Education & Health Services	\$971.18	\$1,033.80	<b>\$1,010.14</b>	\$28.15	\$30.14	<b>\$29.45</b>	34.5	34.3	<b>34.3</b>
Leisure & Hospitality	\$496.54	\$518.90	<b>\$522.94</b>	\$18.88	\$19.29	<b>\$19.44</b>	26.3	26.9	<b>26.9</b>
Other Services	\$876.03	\$1,051.28	<b>\$1,025.55</b>	\$26.79	\$30.92	<b>\$30.89</b>	32.7	34.0	<b>33.2</b>

**TENNESSEE & UNITED STATES  
UNEMPLOYMENT RATES**  
(Seasonally Adjusted)



**TENNESSEE & UNITED STATES  
LABOR FORCE PARTICIPATION RATES**  
(Seasonally Adjusted)

