

BREAKOUT SESSION:

**WORKING TOWARD  
RECOVERY THROUGH TOTAL  
WORKER WELL-BEING**

# SPEAKERS



**Debra Livingston**  
CEO & Founder,  
ReEmployAbility, Inc.



**Rafael Gonzalez, Esq.**  
Partner,  
Cattie & Gonzalez, PLLC



**Nancy Kelly**  
Nurse Case Manager,  
Averitt



# SOCIAL DETERMINANTS OF HEALTH (SDOH)



**Work**  
**Safety**  
**Support**  
**Living Arrangement**



**Housing**  
**Transportation**



**Access to Healthcare**  
**Physical Activity**  
**Mental Health**  
**Resources**



**Employment**  
**Income**  
**Food**



**Skills**  
**Past Work**  
**Residual Functional Capacity**



**Education**  
**Language**



# UNCOVERING SDOH

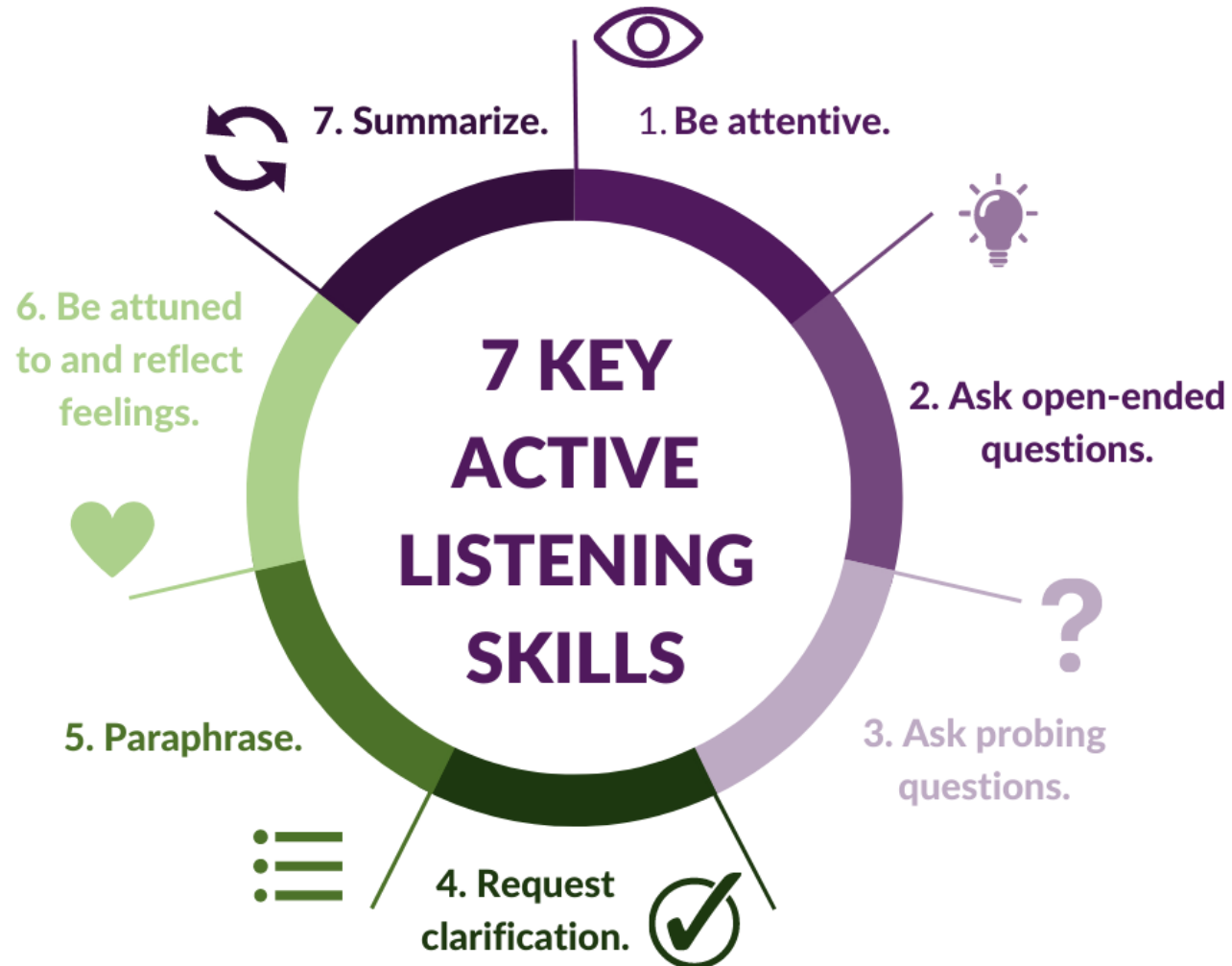
- Economic Stability
- Education Access
- Healthcare Quality
- Neighborhood
- Social Environment



# EFFECTIVE COMMUNICATION



# COMMUNICATING WITH THE INJURED WORKER



# COMMUNICATING ACROSS GENERATIONS







# THANK YOU!



Scan the QR code to learn more about the speakers, or to connect with them on LinkedIn

Link to more information: <http://bit.ly/43vLvIf>

Q & A