

TENNESSEE - DISASTER RECOVERY RESOURCES

For information about recovery resources after a disaster, the following agencies and organizations provide relief efforts for Tennesseans affected by events such as tornadoes, floods, earthquakes, and winter storms.

[American Red Cross - Safe and Well](#) - Let loved ones know you are safe after a disaster.

[Rx Open - Facilities Map](#) - provides information on the operating status of healthcare facilities in areas impacted by a disaster. Users can search the Facilities map for individual facility status.

[SAMHSA - Coping Tips for Traumatic Events and Disasters](#) - Emotional distress can happen before and after a disaster. Coping strategies include preparation, self-care, and identifying support systems. Also, see [Listos First Aid Kit for the Mind](#)

[SAMHSA - Disaster Distress Helpline](#) - **24/7 counseling**. If you are experiencing distress or other mental health concerns related to natural or human-caused disasters.

[Tennessee Statewide Crisis Line](#), available 24 hours a day/365 days a year, is a resource for anyone experiencing a mental health crisis. All calls are routed to a trained crisis counselor in your area, who will provide you support and guidance, and work to connect you with appropriate community supports. This service is free! Call 855-CRISIS-1 (855-274-7471).

[DISASTER RECOVERY RESOURCES AND PROTECTIVE ACTIONS](#)

- Do not enter damaged buildings or hazardous locations.
- Do not drive through flooded roadways and walkways.
- Avoid downed power lines.
- Please see the TN Dept. of Commerce Consumer [Disaster Recovery Resources page](#).
- If you have been affected by a disaster, the Tennessee Department of Commerce & Insurance is sharing important resources to help you focus on recovery and rebuilding.
- Use the [TN Department of Commerce – Verify - License Search Tool](#) to confirm a license, permit, or registration for individuals and businesses.
- Hire only licensed contractors and do not pay the total amount before the work is complete. More tips for consumers after a disaster can be found at <https://www.tn.gov/commerce/disasters>.
- If your house or property sustained damage, take pictures before cleanup efforts, and contact your insurance company.
- [Tennessee Department of Commerce](#) - Complaint line for insurance: (615) 741-2218 or 1-800-342- 4029.
- Contact your [local emergency management agency](#) if you need immediate assistance.

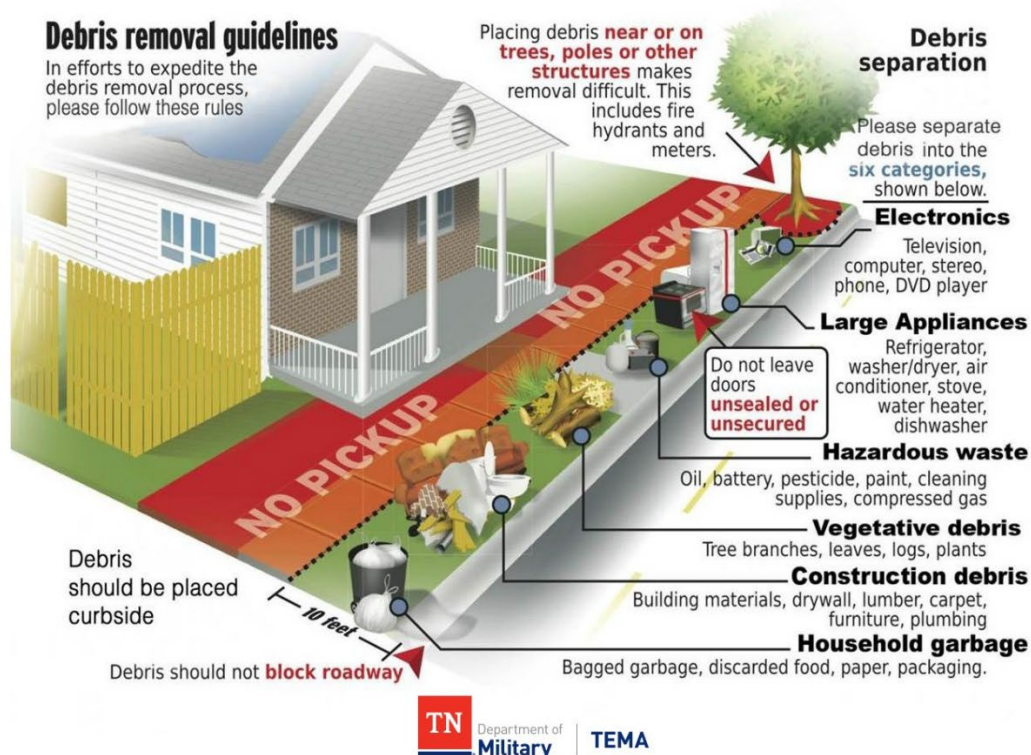
[DEBRIS REMOVAL GUIDELINES](#)

The Tennessee Emergency Management Agency (TEMA) debris removal guidelines prioritize safety, proper debris sorting, and avoiding obstructions to public safety. Specific guidelines include wearing protective gear, separating debris types, and not blocking roads with debris

piles. Contact your [local emergency management agency](#) for specific debris removal instructions in your area.

As the debris removal process continues, please follow these guidelines:

- ✓ Wear protective boots and gloves
- ✓ Separate debris into categories
- ✓ Do not block roads with debris piles



CRISIS CLEAN UP

Crisis Cleanup – Survivor Hotline - This nationally recognized organization is used by local organizations to assist survivors after a disaster. Crisis Cleanup tries to connect survivors who need help, with volunteer groups who can help. The [Crisis Cleanup Hotline](#) is active for the for Tennesseans with storm damage. **Call 615-488-1875** for assistance. Crisis Cleanup can help with fallen trees, drywall, flooding, and appliance removal, tarping, and mold mitigation. All services are at no cost, but work is not guaranteed due to need.

- For additional recovery assistance in Nashville/Davidson County, go to www.nashvilleresponds.com
- For assistance in Clarksville/Montgomery County, go to www.cmcresponds.org
- **For damage assistance, call Crisis Cleanup at 615-488-1875** or contact your Tennessee [local emergency management agency](#).
- **Los sobrevivientes que necesitan asistencia pueden llamar Crisis Cleanup al 615-488-1875.**

DISASTER RECOVERY - LIVESTOCK OWNERS

- [Tennessee Department of Agriculture Emergency Response & Resources page](#)
- Do you need transportation to move livestock from a damaged or flooded area? Contact [FACCT](#) or your local [UT/TSU Extension Office](#). You can also contact your local emergency management agency as they can activate a [Disaster Animal Response Team](#) to assist.
- Do you need a place to temporarily house livestock? Contact your [local emergency management agency](#) as they may have sheltering options in their county emergency plans.
- Do you have missing livestock?
Notify your local emergency management and law enforcement agencies, as well as animal control. It may also be helpful to contact your local UT/TSU Extension Office, Co-Op, and/or other area farm stores as those agencies and businesses may have received reports of found animals.

[Disaster Recovery - What to do if you Find Livestock](#)

[Tennessee Emergency Management Agency](#)

[Disaster Animal Response Teams](#)

[Drought Resources](#)

[USDA Disaster Protection & Recovery](#)