



## Volunteer Tennessee

### 2026 CERT Resource Guide to Starting or Revitalizing a Local Community Emergency Response Team - CERT

**STATUS OF FEMA - Some of you have recently asked about the status of CERT in Tennessee as it relates to the Federal Emergency Management Agency (FEMA). Local CERT program activities in Tennessee are ongoing and not dependent upon the status of FEMA. The CERT program has NOT been canceled. It is still administered and supported in our state through Volunteer Tennessee and nationally by both FEMA and the National CERT Association (NCA). CERT programs will continue to provide a consistent approach to individual emergency preparedness and disaster volunteer training in our communities.**



(Photos courtesy of the Shelby County OEM - CERT programs)

**Please share these guidelines and training opportunities widely with your CERT leadership, instructors, and volunteers.**

For more information please contact:  
Don Sowers - Volunteer Tennessee  
Disaster Volunteer Services Manager  
Acting Tennessee State CERT Coordinator  
312 Rosa L. Parks Avenue, 18th Floor  
Nashville, TN 37243  
Phone: 615-742-6775

Email: [Don.Sowers@tn.gov](mailto:Don.Sowers@tn.gov) or [Volunteer.Tennessee@tn.gov](mailto:Volunteer.Tennessee@tn.gov)

[Volunteer Tennessee](#) is the Governor's Commission on Volunteerism and Community Service. We build capacity and sustainability in Tennessee's volunteer sector. Our Volunteer Tennessee Commission consists of a 25-member, bi-partisan volunteer citizen board appointed by the Governor and includes eleven State Government ex-officio representatives. Volunteer Tennessee is the State's lead agency for volunteers and donations in times of disaster under the Tennessee Emergency Management Plan (TEMP). Volunteer Tennessee also provides information, guidance, and acts as a liaison to FEMA for [locally sponsored CERT programs in Tennessee](#). (Rev. 2/26 ds)

# Table of Contents

Sections with Recently Added Content are **Highlighted in Yellow**

Introduction .....	3
Types of CERT Programs .....	4
Videos About CERT .....	5
Steps to Start and Maintain a CERT Program Checklist .....	7
<b>Registering Your FEMA and Tennessee Recognized CERT Program .....</b>	<b>8</b>
CERT Program Manager Resources.....	10
National CERT Association .....	12
CERT Program Funding .....	14
Volunteer Management and Background Checks .....	15
Volunteer Liability Concerns .....	17
CERT - Code of Conduct.....	19
Volunteer Insurance for CERT Programs* .....	19
CERT - Resource Typing.....	21
CERT - Sample SOGs, SOPs, MOUs, Bylaws, and Volunteer Applications .....	23
Promoting and Recruiting for your CERT Program.....	25
CERT News - Social Media Sites, Groups, Articles, and Posts .....	27
CERT Webpages.....	28
Developing Trainers to Teach CERT Courses .....	29
<b>FEMA - NDEMU - EMI Training Applications .....</b>	<b>30</b>
<b>Presenting CERT Basic Courses .....</b>	<b>31</b>
CERT Basic Course Units - Content Overview .....	31
<b>CERT Basic Course - Materials &amp; Links .....</b>	<b>33</b>
Optional Hybrid Virtual CERT Basic Training & In-Person Skills Sessions .....	34
Hybrid CERT Basic Training - Sample Skills Sessions Videos .....	36
CERT Exercises.....	37
CERT Training/Response Cargo Trailer & Equipment Options .....	38
CERT Basic Course Training Equipment.....	40
CERT Course Certificates - Individual Gear & Equipment - Logos/Patches * .....	41
CERT Vendors & Suppliers .....	42
<b>Upcoming CERT Training Opportunities and Events .....</b>	<b>43</b>
Previously Recorded CERT Training Sessions.....	52
Additional CERT Training Videos, PowerPoints, and Webinars .....	54
FEMA Preparedness and CERT Related Webinar Recordings .....	56
FEMA-EDMU-EMI - Online Independent Study Training Opportunities .....	57
About the Author and Disclaimer .....	60
Updates to this CERT Resource Guide - We would like to hear from you! .....	61



## 2026 Resource Guide to Starting or Revitalizing a Local CERT Program in Tennessee



[Volunteer Tennessee](#) is a Tennessee State Agency and the Governor's Commission on Volunteerism and Community Service. In times of disaster, we are also the State's lead agency for volunteers and donations under the [Tennessee Emergency Management Plan \(TEMP\) ESF-14](#). The Volunteer Tennessee - State CERT Coordinator is the liaison to Federal Emergency Management Agency (FEMA) for all local CERT programs and facilitates local CERT program formation, registration, communications, and collaboration. We also share information on emergency preparedness, community assistance, response activities, volunteer training, and exercise opportunities with local CERT programs.

Please share this [2024 CERT Resource Guide to Starting or Revitalizing a Local CERT Program in Tennessee](#) with your CERT leadership, co-workers, and volunteers. Within this document you will see CERT program guidelines and over four-hundred CERT preparedness related web links. It also has sections on **CERT Program Funding, Grants and HSGP, Liability Concerns, EMA and CERT Volunteer Insurance, CERT Training Videos, CERT Exercises, Upcoming Training, CERT Conferences, and FEMA Preparedness Webinars**. We hope it is helpful to you as you consider a CERT program for your jurisdiction, agency, workplace, organization, campus, or school. If you wish, Volunteer Tennessee is here to help you get a CERT program started or to provide assistance along the way. If you have any questions, please do not hesitate to call us, or email: [Don.Sowers@tn.gov](mailto:Don.Sowers@tn.gov).

- This FREE [Community Emergency Response Team \(CERT\)](#) preparedness training is important for Your Safety, and for the Safety of Your Family, Friends, Neighbors, and Co-Workers.
- **CERT programs are sponsored by local government agencies, schools, community organizations, non-profits, faith-based organizations, or in the workplace.**
- CERT training empowers our community by teaching basic emergency & disaster response skills.
- CERT-trained individuals are better prepared for hazards which threaten our community.
- Goal of CERT is to **“Do the greatest good for the greatest number in the shortest amount of time.”**

CERTs are grassroots community groups with specific goals and expertise determined by their local sponsoring organizations to fit community needs. **CERT training is a locally sponsored and implemented emergency preparedness program which prepares Tennesseans to help our families, neighbors, and co-workers in the event of a disaster in our community.** The CERT course teaches and trains us in basic emergency and disaster response skills, such as fire safety, light search and rescue, team organization, and disaster medical operations. CERT offers a consistent, nationwide approach to individual preparedness, volunteer training, and team organization that professional responders can rely on during disaster situations, allowing them to focus on more complex tasks. When you conduct CERT training, people will have a better understanding of the potential threats to their home, school, or workplace and improve community resiliency. Completing the course prepares the public to safely assist family, friends, neighbors, co-workers, or fellow students before professional first responders arrive, whether or not the trainee joins a CERT team.

**A CERT program provides a reliable and flexible resource of trained volunteers to support other projects that improve the safety of a community.** Those who join a CERT team may also participate in organized community service opportunities that are not part of an emergency response, such as distributing preparedness materials. CERTs have been used to assist EMAs, Fire, and EMS personnel at firefighter rehab stations, basecamp support, disaster damage assessments, debris removal after a disaster, help staff EOCs, Call Center support, Disaster Case Management support, management of spontaneous volunteers and donations, shelter operations, mass feeding, wellness checks, install smoke alarms, and distribute emergency preparedness education material at events such as National Night Out. Qualified CERTs could also support law enforcement by providing traffic or pedestrian control services at special events, parades, sporting events, concerts, points of distribution (PODs) missing person searches, and drone units. **CERT emergency preparedness training accommodates the entire community, including people who are deaf, hard of hearing, or may have other access or functional needs.**

## ❖ Types of CERT Programs

CERT is a worthwhile locally led program which **helps homes, communities, businesses, and schools become more resilient** to disasters and makes a real difference in the lives of people affected by disasters. At its most basic level, the purpose of the CERT Program is to train and organize community members so they may prepare for and respond to emergencies. It is a terrific way for volunteers to learn valuable skills to help themselves, neighbors, and co-workers, meet new people, and make a difference in their community. CERT has become a national program that communities may take part in to prepare for and respond to the hazards they face.

**A community may identify their CERT Program or CERT Teams as a [Community](#), [Workplace](#), [Campus](#), or [Teen CERT](#).** Though they all still share the same requirements, rules, regulations, and common goal of training individuals in their community to prepare for and respond to emergencies.

**[Community CERT Programs](#)** - Communities who elect to develop CERT may identify their program in a way that matches their location and audience. As you move forward, local agencies or organizations (such as EMAs, OEMs, Fire, Law Enforcement, EMS, High Schools, Colleges, Universities, Faith-based organizations, HOAs, Service Organizations, Workplaces, etc.) can choose to either simply train people about CERT and emergency preparedness, called **“TRAIN AND RELEASE.”** This approach regularly trains community members in CERT skills but does not maintain dedicated response teams.

Alternatively, in coordination with Fire or an Emergency Management Agency, local organizations can **“TRAIN AND RETAIN”** CERT graduates as volunteers to be part of their CERT Teams for disaster response. CERT teams may then possibly assist the broader community in emergencies, after disasters or for community events. **This approach trains the CERT program’s volunteers to participate in durable CERT teams** for disaster preparedness and response.

**[Workplace CERT Programs](#)** equip employees with skills that enable them to react and effectively respond to an emergency event. The program is expected to generally limit its activities to the workplace property. Programs may conduct activities off workplace property with appropriate coordination, supervision, and permission from local Fire or EMA.

The **[Campus CERT Program Starter Guide](#)** includes information which supports and enhances existing campus emergency management capabilities to increase the preparedness and resilience of a college or university campus community. The program is expected to generally limit its activities to the college or university campus property. However, Campus CERT programs may conduct activities off the college or university campus with appropriate coordination, supervision, and permission from the local Fire or Emergency Management Agency.

**[Teen CERT Programs](#)** aim to train students in emergency preparedness and basic response to ensure that they have the skills needed to protect themselves and assist others in the event of an emergency. This program can also offer students exposure to careers in emergency management or as first responders. The program is expected to generally limit its activities to the school property. Programs may conduct activities off school grounds with appropriate coordination, supervision, and permission from local Fire or EMA.

➤ **To learn more [About CERT Programs](#), you should review FEMA policies and guidelines within the [FEMA 2023 CERT Program Guide](#), and watch the CERT videos below.**

## ❖ Videos About CERT

Below are several introductory CERT videos which may be useful to inform our communities about CERT. Also, the [Workplace CERT Starter Guide](#), [Teen CERT Resources](#), or [Campus CERT Starter Guide](#) can aid in preparedness education and resilience of businesses, neighborhoods, schools, or campus communities. These CERT program are usually expected to work within their respective properties. But with specific agreements they may be activated to work with neighboring communities. You should always coordinate your pre-authorized efforts with the local Emergency Management Agency.

### Video: [“What is CERT?” 2013 \(10:14 min.\)](#)



This [“What is CERT?”](#) video provides a terrific overview of the benefits of a CERT program. First responders may be overwhelmed in the event of a disaster. And no community can afford enough staff for major disasters or even large emergencies. At such critical times, the CERT program boosts a community’s ability to respond. Community Emergency Response Team members can help in those first few hours or even days following a major disaster. CERTs can be a force multiplier by taking steps to lessen the effects of hazards on themselves, their families, co-workers, and their neighbors. [CERT training covers basic skills](#) that are important to know in a disaster when emergency services are not available. With training, practice, and by working as a team you will be able to protect yourself and maximize your capability to help the greatest number of people after a disaster.

### Video: [FEMA Basic CERT Training Overview 2023 \(4:15min.\)](#)



What would you do if you found yourself in the middle of a disaster or emergency? How would you respond? Would you be prepared to act? CERT basic training was created to help you answer those questions through challenging highly effective and engaging training in areas like fire safety light search and rescue team organization and disaster medical operations. Through this training CERT members are prepared to help their communities before during and after natural or man-made disasters. CERT teaches people that as situations arise you will have the capabilities to react with confidence.

### Video: [“History of the CERT Teams” 2020 \(7:56 min.\)](#)



The [“History of the Community Emergency Response Teams”](#) video, produced by the Los Angeles City Fire Department, is told by those who created CERT back in 1986. CERT later became a national program in 1993. There are now CERT programs in all fifty states, including many tribal nations and U.S. territories.

### Video: [“CERT in Action” 2013 version \(19:14 min.\)](#)



In the 2013 version of [“CERT in Action,”](#) a fierce storm has struck the local community. CERT members activate in their neighborhood, set up an Incident Command Post, and assess damage throughout the area. They use their CERT skills to respond to damage and injured victims in the local community center, managing the situation until professional responders arrive.

### **Video: “Community Emergency Response Teams in Action” 2018 (6:28 min.)**



A good FEMA video to educate people about Community Emergency Response Teams. Community Emergency Response Team members from California, Florida, and Texas explain how they come together to prepare their communities and assist their neighbors and co-workers during emergencies. And here is the companion [CERT Teams in Action - 30 second promo video clip](#) for showing to people at a Preparedness Fairs, Information booths, etc.

### **Video: “Campus CERT” Pulaski College, IL (3:03 min.)**



[Campus CERT](#) – This CERT preparedness training is led by a group of approved faculty and staff in colleges and universities. They have been professionally trained with CERT to assist victims in a disaster, an incident, or an emergency on campus. CERT members participate in drills and exercises and receive additional training. Faculty, Staff, Resident Advisors, and Students may participate in Campus CERT emergency preparedness training. [See Campus CERT](#), [CERT at UCLA – Disaster Response Training](#)

### **Video: “Teen CERT” Sandy City Hall, UT - 2013 (11:15 min.)**



High School, Scout, and [Teen CERT](#) programs play important roles in preparing youth and school staff for disasters that may affect our schools and homes. It is important to involve youth in disaster preparedness and recovery efforts to increase awareness of hazards, enhance the chance that they openly discuss how to protect their families, and seek help should their community be affected. Youth can play a range of roles in youth preparedness programs and play a role in recovery efforts. [See Teen CERT](#)

### **Video: “Workplace CERT” - Resilient Business ... (4:04 min.) \***

(\* No commercial services endorsement should be implied). Business owners should encourage employees and their families to get CERT training. Please contact your local emergency management agency to see if they offer CERT training, possibly right on your premises. You may want to build CERT training into the continuing education component or Continuity Planning for your business. Sponsoring a workplace CERT training teaches employees what to do in an emergency or disaster. See [Workplace CERT](#)



See [Workplace CERT](#)

### **Video: “Workplace CERT” - Disaster Drill at the Port of Los Angeles (2:27 min.)**



The Port of Los Angeles hosted a CERT disaster drill in cooperation with Los Angeles fire and police agencies along with Dignity Health St. Mary Medical Center at the Port’s World Cruise Center. The drill allowed CERT volunteers to showcase their first responder skills. CERT trained employees utilized the training learned in the classroom and during exercises. CERT members can assist others in their workplace following an event when professional responders are not immediately available to help. Please contact your local emergency management agency to see if they offer CERT training, possibly right on your premises. See [Workplace CERT](#)

See [Workplace CERT](#)

## ❖ Steps to Start and Maintain a CERT Program Checklist

- ✓ Please contact the Tennessee State CERT Coordinator for assistance: [don.sowers@tn.gov](mailto:don.sowers@tn.gov)
- ✓ Always reach out to your Local EMA or Government Agency (Fire, EMS, etc.) about possible **Sponsorship** of your CERT program or your program becoming an approved Community Emergency Response Team in their community. **Maintain these partnerships!**
- ✓ Get Consensus and any necessary **Approvals** among your key Stakeholders in your Community, Group, Agency, Organization about Starting a CERT program.
- ✓ **To REGISTER your CERT program** go to the FEMA webpage: [Registering a CERT](#). Please read that page, then at on the button of the page where it says “Ready to register?” click on the blue navigation button which reads “[Register a CERT](#)” That will take you to [FEMA CERT Registry](#). If you are having trouble logging in, make sure “cookies” are enabled on your computer. Otherwise, submit a request to FEMA for assistance. (Please see the [CERT User Guide](#) and detailed instructions on the next page.)
- ✓ Take the **CERT Program Manager course**.
- ✓ Assess your Organization’s Capabilities and Community Needs
- ✓ Identify Opportunities and **Secure Resources - Partnerships with People and Funding**
  - Budget - Determine the funding required to start and run your CERT Program. This depends on the mission of your program and resources needed to accomplish them (see CERT Funding section).
- ✓ Develop a Set of **Goals and Objectives - Draft a Program Plan**
- ✓ Collect Training Materials (Instructor & Student Manuals, Forms, Flyers, Brochures, etc.).
- ✓ Acquiring Equipment (CERT gear, PPE, and Tools).
- ✓ Identify a Storage Location or CERT cargo trailer for Equipment and Supplies.
- ✓ Develop a **Training and Exercise Plan**.
- ✓ Establish a **Training Cadre - Take the CERT Train-The-Trainer course** (see Developing Trainers to Teach CERT Courses elsewhere in this CERT Guide).
- ✓ **Market** your program, allow plenty of lead time before the CERT course begins.
- ✓ **Deliver** CERT course training and exercises. FEMA Requires a Minimum of One CERT Basic training course and Exercise are presented each Year
- ✓ **Provide CERT emergency preparedness Training to your Whole Community annually.**
  - Facilitate training for those who may have access and functional needs or speak another language.
  - Conduct outreach to distressed communities, in-person and virtually.
- ✓ Retain CERT course participants as Retained **CERT Volunteers** or Release them after training.
- ✓ **Manage and Maintain** your CERT Program
  - **Consider having CERT volunteer leaders or a committee to help:** Run the program, Record Keeping, Communicate with public and Volunteers, Work with Funders and Sponsors, Conduct on-going Training, Communicate with Volunteers through Emails, Website, Social Media, Phone, Texts, Ham Radio, Staff community events.
  - Plan Continuous Training, Community Events, Monthly Training? Quarterly Meetings? **Consider using the videos and training links in this guide for ongoing CERT volunteer Training Sessions.**
  - Maintain Support with Leaders with Community Stakeholders.
  - Remember to Maintain Confidentiality of Personal Information
- ✓ Track and **Evaluate** Your Program
- ✓ Data Management, Maintain Training Records, Track Equipment, etc. **Update FEMA CERT Registry** and Complete **FEMA Annual CERT Program Survey**. See the [FEMA CERT Registry Dashboard](#) for the survey questions about your activities in the previous year. The [2020 Community Emergency Response Team \(CERT\) Annual Certification results](#) provides a previous snapshot of CERT programs nationwide.
- ✓ **Need Help? Contact the Tennessee State CERT Coordinator** for assistance along the way, [don.sowers@tn.gov](mailto:don.sowers@tn.gov). For more information please see the [FEMA - CERT Program Guide \(2022\)](#). Thanks to [CivicPlus How to Set Up a CERT](#) and [CivicPlus - CERT Program Set-up Checklist, Step by Step to Starting and Maintaining a CERT Team - by Serve Illinois](#), and see the [GovPilot Blog - How to Form a Community Emergency Response Team](#).

## ❖ Registering Your FEMA and Tennessee Recognized CERT Program

If you are considering starting or revitalizing a CERT program for your community, workplace, or organization in Tennessee, please contact [don.sowers@tn.gov](mailto:don.sowers@tn.gov) to apply for **CERT Program Registration**, as the **FEMA – CERT REGISTRY WEBPAGE IS CURRENTLY UNAVAILABLE.**

1. **Sponsoring Organization - FEMA policy requires an official “Sponsoring Organization.”** Any Government Agency, Service Club/Organization, Faith-based Group, 501c3, HOA, Workplace, Campus/School, etc. wishing to be recognized as an official CERT program, and use the CERT logo, requires sponsorship or approval by a government agency, such as a local Emergency Management Agency, Fire Department, EMS, Law Enforcement, or elected official, etc. A sponsoring organization should include their name in the CERT program name. And only government agencies can sponsor CERT programs for specific geographic areas (e.g., city and county names) within their jurisdictions. Service organizations can have CERT programs located in a specific geographic area, but they would need approval by the State CERT Coordinator and the local EMA, Fire department, or elected officials to solely use a geographic name for their program.

**Activation: CERT teams shall not self-deploy elsewhere, in their capacity as a “CERT team,” unless approved or directed by local government to respond** to a disaster or other operations within that jurisdiction. For example, if an independent disaster or recovery group or organization wishes to refer to themselves as a "CERT team" and deploy to a location other than to that individual CERT program's workplace, campus/school, Homeowners Association properties, or faith-based group assisting their church members, etc. must first have a government Sponsoring organization and approval to deploy.

Sponsors handle the activation, staging, deployment, and operational activities of their teams. The Sponsoring organization must develop policies, procedures, and documentation practices to support these activities. Text of the sponsorship policy can be found at [FEMA - 2023 CERT Program Guide - Pages 9 and 10](#). That policy is in place to make sure there is ongoing oversight and coordination by local government of all CERT response teams who may wish to deploy. Because FEMA manages the CERT program and the Department of Homeland Security holds a trademark on CERT marks, any group which wants to identify or respond as a “CERT team” must follow these requirements set by FEMA. Sponsoring Organizations help support many CERT Program functions and add to its credibility. The following organizations may provide sponsorship for a CERT Program:

- State, regional, local, territorial, commonwealth, unincorporated or tribal government-operated public safety agencies, including those responsible for law enforcement, fire suppression, and emergency medical services.
- State, regional, local, tribal, or territorial emergency management agencies.
- Departments under the authority of local, municipal, or tribal governments, including health departments, fire protection districts, regional planning districts, and city councils. Non-emergency service agencies and offices may sponsor CERT Programs, but must enable coordination with emergency services for training, mobilization, and supervision as needed.
- Elected officials or their offices and other government organizations, if they ensure the program can interface with emergency service organizations.

The sponsor's role is to define program goals and expertise to align with community needs and resources. Sponsors train or supervise CERT members, and act as a liaison between the local CERT program and the community to conduct emergency preparedness training. In an emergency, local CERT members may be called upon to assist professional responders with operational activities under the command and control of an affiliated or sponsoring local government agency. The sponsor may also choose to fund, administer the program, conduct training, organize teams, and set CERT program policies. Though for an independent organization's CERT program, such as a workplace, faith-based group, 501c3, etc., the independent organization usually does all those

activities themselves. But the organization's CERT program would still need approval from the local government agency to deploy as a CERT team elsewhere in their county or state. **CERT program costs are at the discretion of the host agency or sponsoring organization supporting the team. We recommend all CERT programs develop in close consultation with the local Emergency Management Agency.**

**Identify a Contact person**, selected by your organization to be [CERT Program manager](#).

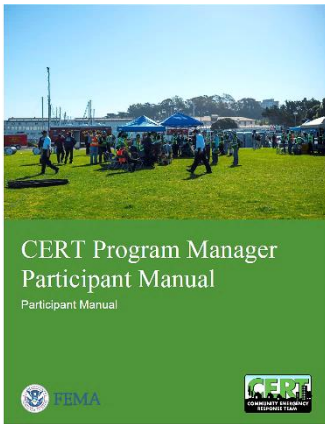
2. **FEMA Registration** - The program must register online at the FEMA registration portal at <https://community.fema.gov/register>. A group or organization wishing to start a CERT program must complete the initial [FEMA - Preparedness Community - CERT Registry application](#) and the program must be accepted by FEMA and verified by the Tennessee State CERT Coordinator who considers whether the sponsoring agency can supply the personnel and resources to support the program and annual training and drills. If you have not previously created a personal account to register a CERT program, click on "[Register](#)" and submit your personal information to create your personal access account. After that is done, submit the initial [FEMA - Preparedness Community - CERT Registry application](#) for your program in order to appear on the [Find a CERT website](#) which allows the public to easily search for a nearby CERT program by mileage and Zip code. To see an existing program's account log into [CERT dashboard on FEMA's Preparedness Community website](#). If you need help with a **CERT Registry Password Reset or Account Reactivation** verify "cookies" are enabled on your computer. Otherwise, submit a request to [FEMA for assistance](#).

**Starting June 2024, after you create your account the following new login guidelines apply:**

An automated email is triggered if there is no login activity for 90 days. Every 60 days, you will receive a prompt to update your password when you log in. If there is no login activity for 120 days, your account will be automatically deactivated. Should this occur, please contact the [FEMA Preparedness Community - Password/ Reactivation Help Desk](#). If you previously had an approved CERT program registration and no longer have the password, please send FEMA an email at [FEMA-Prepare@fema.dhs.gov](mailto:FEMA-Prepare@fema.dhs.gov) to obtain a new password. Let me know if FEMA does not respond and I will help with that process [don.sowers@tn.gov](mailto:don.sowers@tn.gov) If you encounter any technical issue accessing your Preparedness Community account, please email [FEMA-Prepare@fema.dhs.gov](mailto:FEMA-Prepare@fema.dhs.gov) for assistance.

3. **Training - Conduct at least one mandatory [CERT Basic Training Course](#) per year.** This course can be presented in the usual 12-16-hour classroom in-person format or there is a new [TN approved hybrid online CERT Basic training](#) that allows community members to complete the classroom portion of the CERT course online. A 6-hour in-person [Skills Session](#) is also required, usually at the end of the training classes. An excellent 8-minute video about the [History of the Community Emergency Response Team \(CERT\) Training](#) by the Los Angeles City Fire Dept. which describes how community members can be trained in emergency preparedness. And here is more information about [CERT training resources](#) and a [Sample CERT Application and Waiver](#). **In Tennessee, each CERT program Sponsoring Organization determines whether additional training is required for their volunteers beyond the CERT Basic course.**
4. **Exercises** – If your program **trains and retains** CERT team volunteers, for assistance in disasters or other response activities, you must **hold a [CERT exercise](#) at least once a year** with them.
5. **Program Updates** - The FEMA [Annual CERT Program Certification](#) is due March 31st each year to ensure your program is kept active, accessible to potential volunteers, and officially recognized as a resource to your community! Record keeping is a part of a CERT program evaluation, risk management, goal setting, and funding. Annually, the CERT program manager **must** login to the [FEMA CERT Registry Dashboard](#) website to answer **survey questions** about your activities, number of CERT volunteers, training classes, and exercises. You can update your CERT profile at any time from your program dashboard. The [2020 Community Emergency Response Team \(CERT\) Annual Certification results](#) provides a snapshot of CERT programs nationwide.

## ❖ CERT Program Manager Resources



A link to the CERT Program Manager Participant Manual is available in the [National CERT Association \(NCA\) Resource Library](#)

### **CERT Program Manager - Course Description**

This course prepares participants to establish and sustain an active local Community Emergency Response Team (CERT) program. The responsibilities of a local CERT Program Manager are various. This course defines the core components of a local CERT program and focuses on effective practices for:

- Planning and interacting with a broad range of stakeholders.
- Managing program resources.
- Sustaining the program course topics, including:
  - Developing local CERT program goals and a related strategic plan.
  - Promoting a local CERT program.
  - Orienting, managing, and retaining CERT members.
  - Recruiting, funding, managing, and retaining CERT trainers.
  - Acquiring and managing program resources.
  - Delivering and managing effective training and exercises.
  - Developing policies and procedures for operating a local CERT program.

The audience for the CERT Program Manager course includes professionals and volunteers who plan to be a local CERT Program Manager in Tennessee, or for those already in a CERT Program Manager position. These classes fill up quickly, but the [FEMA - National Disaster & Emergency Management University \(NDEMU\)](#) offers this course several times per year. To sign up for a [FEMA-Emergency Management Institute \(EMI\)](#) course, you will first need to obtain a [FEMA Independent Study Student Identification Number \(SID\)](#). Or if you have forgotten your SID, please go to the [FEMA SID website](#). Each CERT Program Manager virtual course meets 4 days in one week for 4 hours per day. Students must attend all sessions of their delivery. All class times listed above are Eastern Time (ET). The class size is limited. **Civilians (who are not first responders) must first complete the CERT Basic Course. First Responders must complete the [IS-317: Introduction to Community Emergency Response Team \(CERT\) online course](#).** And it is highly recommended that first responders also complete the [Hybrid CERT online course](#). Please note important [FEMA - EMI Application](#) information in the “FEMA - EMI Training Applications” section later in this CERT Resource Guide.

### 427 - CERT Program Manager Course Schedule for 2026

#### EMI Course Schedule

Course	Go	Start	End	City	State	Curriculum	POC
427	<input type="button" value="Go"/>	<input type="text" value="mm/dd/yyyy"/>	<input type="text" value="mm/dd/yyyy"/>	<input type="text" value="Cities"/>	<input type="text" value="States"/>	<input type="text" value="Curric"/>	<input type="text" value="POC"/>
E0427: CERT Program Manager		4/2/2026	4/3/2026	Emmitsburg	MD	Mission Support	<a href="#">Cortes, Lucia</a> 202-975-3158
K0427: CERT Program Manager (01:00 PM - 05:00 PM EST)		3/3/2026	3/6/2026			Mission Support	<a href="#">Cortes, Lucia</a> 202-975-3158
K0427: CERT Program Manager (T, W, R, F 01:00 PM - 05:00 PM EST)		8/25/2026	8/28/2026			Mission Support	<a href="#">Mickles, Stacey</a> 202-704-4218

See the [2026 NDEMU EMI Course Schedule](#) for additional CERT Train-the Trainer and Program Manager course offerings. If you apply for the **in-person course in Emmitsburg, MD** in April 2026, applicants **MUST** also complete and submit their certificate for the [IS-13 - NDEMU Conduct and Behavior course](#).

To apply for a course, complete the [NETC Online Admissions Application](#) and see pages 28 & 29 in this CERT Resource Guide for additional detailed FEMA – NDEMU - EMI application instructions. However, before submitting an application for a FEMA virtual or in-person CERT course, please contact [don.sowers@tn.gov](mailto:don.sowers@tn.gov) for assistance in completing your training application and to facilitate the necessary State of Tennessee approvals.

For questions or accommodation requests, contact Lucia Cortes, FEMA NDEMU Mission Support Branch: [fema-ms-branch@fema.dhs.gov](mailto:fema-ms-branch@fema.dhs.gov). For information about Resident Course Applications, Travel Information, and Resident Course Transcripts please contact NETC Admissions [netcadmissions@fema.dhs.gov](mailto:netcadmissions@fema.dhs.gov)

Many FEMA-EDMU-EMI training courses related to CERT are free, except for meal tickets at EDMU. **And please note: the Tennessee Emergency Management Agency (TEMA) approval of FEMA training applications is only to enable the application to be processed by FEMA. It does not constitute approval by TEMA of any costs or reimbursements that may be associated with CERT training.** Currently, there are no means by which TEMA can support costs associated with local CERT training or expend funds via TEMA staff without an approved state-level program. **Before submitting a FEMA-EMI CERT training course application for a virtual or in-person class, please contact [don.sowers@tn.gov](mailto:don.sowers@tn.gov) for assistance prior to completing your training application and to gain the necessary approvals.**

EDMU - [EMI Course Codes](#) represent the following formats:

**On-campus (E) courses:** In-person training at the National Emergency Training Center in Emmitsburg, Maryland.

**Virtual (K) courses:** Online training through a virtual classroom environment.

**Off-site (L) courses:** Locally delivered training in select regions when available

Sign up to receive new [NDEMU Training Opportunities and Bulletins](#).

[Complete - EMI Course Schedule \(PDF\)](#) 

## CERT Program Best Practices

Before starting or revitalizing a CERT program, draft a program plan with goals and objectives, but be realistic when doing planning. [FEMA's Starting a Community Emergency Response Team \(CERT\): Guidelines and Recommendations](#). And please feel free to contact us at Volunteer Tennessee for assistance. Also, consider reviewing:

- [How to Form a Community Emergency Response Team, FEMA - CERT Fact Sheet](#)
- [CERT Draft Program Plan.](#)
- [Developing and Organizing Your CERT Team to the Max](#)
- [Maintaining and Revitalizing your CERT Program](#)
- [How to Launch a CERT Program in Your Community, by Galaxy Digital](#)
- [Restart and Rejuvenate Your CERT Program After COVID-19](#)
- [CERT Program Manager Plan \(Sample\)](#)
- [CERT Program Manager Plan \(Blank Template\)](#). Many more suggestions are presented in the [CERT Program Manager course](#).

And here are some CERT Program Manager/Coordinator job descriptions: [City of Las Vegas CERT Program Coordinator](#), [County of Alameda Fire Dept. CERT Coordinator](#), [Town of Raynham CERT Coordinator](#), [State of Maine - 2025 Emergency Management Agency CERT Guidebook](#).



**National CERT Association** - The [National CERT Association \(NCA\)](#) is a division of the [Fire Services Training Institute \(FSTI\)](#), a not-for-profit organization dedicated to developing, managing, promoting, and distributing educational programs and materials to the public. The Association is committed to enhancing community preparedness and resilience through volunteer emergency response, standardized training, education, and collaborative partnerships with local, state, and national emergency management agencies.

*The Mission of the National CERT Association is to promote resiliency through preparedness, response, and recovery by incorporating best practices and sharing resources to empower a national network of trained individuals dedicated to building safer and more resilient communities.*

For 40 years, CERT programs have been preparing their community to stay safe and save lives during a disaster. Across the nation, over half a million CERT trained volunteers are committed to, "doing the greatest good, for the greatest number, in the shortest amount of time." The NCA, in partnership with FEMA, works towards building and increasing the capacity for CERT programs across the nation to train, support, and utilize their CERT members. [Join the National CERT Association today](#), and together, through hard work and dedication, we will do great things.

- **Samantha Royster** - Interim President, National CERT Association

[Becoming a member](#) of the National CERT Association (NCA) means joining a national network of individuals and organizations dedicated to building safer, more resilient communities. As a member, you gain access to exclusive benefits designed to empower, connect, and elevate your impact in emergency preparedness and response. [Register here to Join the NCA.](#)

### **National CERT Association Membership Benefits:**

- **Training and Resources** - Access NCA exclusive training materials, toolkits, webinars, and best practices to enhance your local CERT program's effectiveness.
- **Networking and Collaboration** - Connect with CERT leaders, community volunteers, and emergency management professionals from states, territories, and tribal nations to share ideas, challenges, and solutions.
- **Professional Development** - Stay current with the latest developments in emergency response training through continuing education, leadership opportunities, and special member events.
- **Conference Discounts and Early Access** - Enjoy reduced rates and priority registration for the National CERT Conference and other NCA-sponsored events.
- **Discounts from Corporate Sponsors** - Enjoy discounts from NCA corporate sponsors.
- **Program Support and Technical Assistance** - Receive guidance and support to grow and sustain your CERT program.

- **Recognition and Awards** - Celebrate the successes of your team and peers through national awards, spotlight features, and member highlights.
- **National Representation** - Join your voice with thousands of CERT programs and volunteers across the country to advocate for resources, recognition, and support at the national level.
- For questions about NCA Membership contact [membership@nationalcert.org](mailto:membership@nationalcert.org)

**National CERT Association (NCA) Resource Library** - The National CERT Association is working with FEMA, state, territory, and tribal CERT Coordinators to collect a variety of resources that have been developed throughout the US. The [NCA Resource Library](#) is a NCA membership benefit and members can access the Resource Library via the Members Area by logging into their account on the website. Some resources that are available to everyone can be found in the [NCA's Public Resource Library](#). These resources were developed by FEMA and may also be available on FEMA's website. Resources that can be found in the Public Resource Library include CERT Basic Training Materials, Participant Manuals, Instructor Guides, and PowerPoint Slides.



The [National CERT Association \(NCA\)](#) will be hosting the [2026 NCA CERT Conference](#) next year from **August 24-29, 2026**. Please join your fellow CERT volunteers and leadership from throughout Tennessee and across the country for some fabulous courses and advanced CERT related training opportunities.

And here is a link to the [2026 NCA Conference Sneak Peek Video](#).

**Conference courses** may include: CERT **Train-the Trainer** (FEMA-NDEMU), CERT **Program Manager** (FEMA-NDEMU), NCA CERT **Master Instructor**, NCA and State **Resources** for Local CERT Programs, **Hybrid CERT Updates**, **Stop the Bleed**, **Psychological First Aid**, **HAM CRAM**, **Weather 101/Spotter Training**, **Animals in Disaster**, **Teen CERT**, Starting an **Advanced CERT Program**, CERT Utilizing **Resource Typing** and Position Task Books, **Traffic and Pedestrian Control**, Starting a **Firefighter Rehab Unit**, CERT and the **Missing Person Incident**, and many more.

**Theme** - The NCA will be celebrating the 40th anniversary of CERT. "Let's honor our past, elevate our present, and shape the future."

**Location** - The conference will take place at the **Hyatt Regency Irvine hotel is located at 17900 Jamboree Rd, Irvine, CA 92614** directly across from John Wayne Airport. Special room rates will be available for conference attendees. The Hyatt Regency Irvine hotel is located directly across from John Wayne Airport in Orange County, California which is the home of Disneyland, Knott's Berry Farm, the Spectrum in Irvine, Newport Beach, and Huntington Beach.

**Registration** - The Registration link for this conference will be posted in the coming months.

## ❖ CERT Program - Funding

CERT basic emergency preparedness training is provided free to the public. However, all CERT program costs, such as training, exercise, and equipment expenses, are at the discretion of the local sponsoring organizations that directly support these teams. Only governmental agencies may receive the Department of Homeland Security funding that supports CERT. Most of this grant funding comes through the states or, in some urban areas, through the Urban Area Security Initiative (UASI) region [www.fema.gov/grants](http://www.fema.gov/grants). If the local CERT program is not government sponsored, some other CERT programs have filed for 501(C)3 status to allow them to do fund raising.



**Grants and HSGP** - Some federal dollars were recently made available through regional HSGP councils, see the [FY 2023 Homeland Security Grant Program \(HSGP\) Fact Sheet](#) and [FY 2022 - Homeland Security Grant Program \(HSGP\) Enhancing Community Preparedness and Resilience](#) projects, which includes local CERT programs. It is unknown how long HSGP funding opportunities for CERT will be available in the future. If so, any additional capacity regarding the CERT program may potentially be an eligible project under the HSGP that could be presented to local and state councils that provide available support for existing and future CERT programs. Such proposals would follow the established process for project selection by the regional and state councils to determine

eligible roles and the means to fund these expenditures. Applying for an award under the HSGP is a multi-step process and requires time to complete. The proposals require coordination and approval through those councils that follow the process established for project implementation under HSGP. See [FEMA Preparedness Grants Manual](#).

**HSGP** - Enhancing community preparedness and resilience is one of the National Priority Areas (NPA) for FY 2023 with a 3% minimum spend. CERT is one of the specific examples mentioned for this funding: “**Establish, train, and maintain Community Emergency Response Teams (CERT) and Teen CERT, with a focus on historically underserved communities, including procurement of appropriate tools, equipment and training aides**, including local delivery of CERT train-the-trainer and CERT Program Manager to build local program training and maintenance capacity.” Also, [FEMA Preparedness Connect](#) has a recent [article about HSGP grants](#). These grants need to be coordinated by your local Homeland Security Regional Council. Those councils are comprised of representatives from state and local departments and agencies who are tasked with helping plan and direct the statewide homeland security activities.

**HSGP project-based grants** require work plans, tracking, and documentation identified and agreed upon by consensus to support priority objectives tasked to specific recipients and create a contractual relationship between the grantee and grantor to expend funds following these criteria. Notices of Grant Funding Opportunities (NOFOs) can be found at [GRANTS.GOV](http://GRANTS.GOV). Also, see FEMA Region 2 webinar [Grant Funding for CERT, Volunteer Florida - Sample CERT Program Sub-Grantee Contract](#). And click here to [Subscribe to the FEMA-ICPD Newsletter](#).

**Additional Funding Ideas** - The [Massachusetts \(CERT\) 2015 Best Practices Guide](#) has excellent suggestions for developing, funding, marketing, and enhancing CERT programs. If your local funding is limited, creating an IRS approved [501\(C\)3 \(non-profit organization\)](#) may be another way to raise funds for a CERT program. To be tax-exempt under section 501(c)(3) of the IRS Code, an organization must be organized and operated exclusively for exempt purposes. In some communities, CERT programs have filed for 501(C)3 status to allow them to do fund raising. Donations could be used to provide equipment, medical supplies, and training materials for the team. For some ballpark training and program numbers, here is a link to a [CERT Resource Library](#) with a “Quick Sheet” flyer about [Average CERT Program Costs](#).

## ❖ Volunteer Management and Background Checks

The CERT Program should ensure its structure meets the needs of a community and is appropriate for the resources available. The program may have an internal structure for its program leadership and a hierarchy of its component CERT training and component CERTs. A CERT program should build its leadership structure to accomplish all administrative tasks required to keep the program running efficiently and meet FEMA requirements, as well as state or local rules and regulations.

**Consider establishing a cadre or leadership group of experienced CERT members to assist you in training, management, and administrative tasks.** Communicate what you expect from them. Create written SOPs or guidelines. And the U.S. Fire Administration just released a new [USFA Manual on Retention and Recruitment in the Volunteer Emergency Services \(May 2023\)](#). While not directly addressing CERT, much of the content in the USFA manual is also applicable to EMA and CERT volunteers. And see: [10 Best Practices in Volunteer Management](#), [Volunteer Management: Best Practices to Drive Success](#), [Volunteer Surveys: The Best Questions to Ask \(& Templates!\)](#), [Smart Social Media Campaigns for Your Volunteer Program](#), [6 Ways to Better Support Volunteers](#), [The Importance of Communicating Impact to Volunteers](#), [Your Lapsed Volunteers: Here's How to Get Them Back](#), [Get Connected Volunteer Mgmt. Software - Galaxy Digital](#), and [DeployPro Team Management System](#). Your program can post volunteer opportunities on our [Tennessee Serves portal](#). [Guide To Writing a Volunteer Job Description](#).

**Background Checks of Volunteers** - While not universally required, many Community Emergency Response Team (CERT) programs do conduct background checks on their volunteers, with the decision often depending on local regulations and the specific responsibilities of the volunteer role and are typically overseen by the sponsoring local government agency; this is done to ensure the safety and security of the community during potential disaster situations. See: [Henry County, Indiana OEM Volunteer SOPs and Guidelines - Rights and Responsibilities of EM Volunteers](#).

Key points about CERT background checks:

- **FEMA guidelines:** While FEMA does not mandate background checks for all CERT volunteers, they do encourage local programs to implement appropriate screening processes to protect the community “as applicable law permits or requires.”
- **Local variations:** Some communities may only require background checks for CERT members who will be directly involved in sensitive tasks like assisting vulnerable populations, while others may conduct checks for all volunteers.
- **Scope of checks:** Background checks for CERT volunteers can include criminal history checks, depending on local policies.
- **Importance of screening:** Conducting background checks helps to ensure that CERT volunteers are trustworthy individuals who can be relied upon during emergency situations.

**It is a local choice whether to conduct background checks of retained CERT volunteers.** But background checks are recommended for volunteers who respond to a disaster or an incident that may involve interaction with vulnerable populations, those with Access and Functional Needs, or the handling of sensitive data. For an example, see a [California law AB 506 \(Effective January 1, 2022\)](#) which requires all administrators, employees and all volunteers in California MUST have a one-time background check as approved by the California Department of Justice to exclude individuals with a history of child abuse. This form of background check requires live scan fingerprinting. [IS-368: Including People with Disabilities & Others with Access & Functional Needs in Disaster Operations](#).

**Non-Discrimination** - [Title VI of the Civil Rights Act of 1964](#) is a national law that protects persons from discrimination based on their race, color, or national origin in programs and activities that receive federal financial assistance. CERT programs in Tennessee shall comply with Title VI which states that “No person in the United States shall, on the ground of race, color, or national origin, be excluded from participation in, be denied the benefits of, or be subjected to discrimination under any program or activity receiving Federal financial assistance.”



**Reasonable Accommodations** - CERT emergency preparedness training accommodates the entire community, including people who are deaf, hard-of-hearing, or may have other access or functional needs. The [Americans with Disabilities Act \(ADA\)](#) protects people with disabilities from discrimination. It requires state/local governments (e.g., CERT programs) to make reasonable accommodation and present equal opportunities to those with disabilities so everyone can benefit from CERT training and activities. You potentially have this covered by providing ASL interpreters, closed captioning on any videos (e.g. [County of San Diego videos in accessible formats](#)), and possibly some printed materials for use in connection with any detailed verbal instructions. Also, you may need multiple interpreters if your classes are going to last several hours to give the interpreters a break. Ask your ASL provider about that.

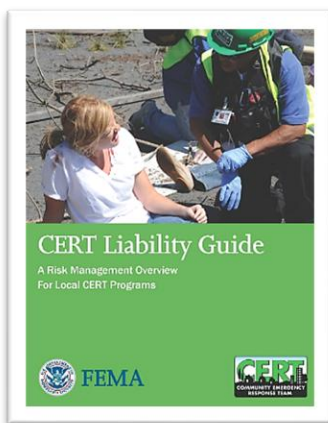
We do not recommend changing your CERT classes or skills sessions. And there should not be a need to partner them up. Treat everyone the same as you would any other member of the class. Also, we suggest you tell anyone who is specifically speaking to a deaf or hard-of-hearing person to please make eye contact by looking directly at that person while speaking to them. Instructors and others should not be directing their comments to the interpreter who is there to relay the commentary. And try not to block the view of the interpreter from the people who need their assistance. For additional info, here is a FEMA Region 2 emergency preparedness webinar "[Preparedness for People with Loss of Sight, Hearing or Combined Loss](#)." Finally, do not hesitate to simply ask them what they need. See: [San Diego Co. CA - OES First Responder Access & Functional Needs Training Videos](#) and [Exploring - Qualified Sign Language Interpreters in Emergency Management](#).

**Celebrate Dedicated Volunteers** - Recognize the great value of CERT volunteers. Always express sincere appreciation to your volunteers. According to the [Independent Sector](#), the value of a volunteer hour in Tennessee in 2024 is \$29.93. This is important to potentially offset FEMA cost-share reimbursements in a Federally Declared Disaster. Consider awarding the [President’s Volunteer Service Award](#) to CERTs. It helps you show your most outstanding volunteers their work for your organization and the community makes a real difference. Whether your volunteers graduate from the CERT Basic course or qualify for a President’s Volunteer Service Award, earning special recognition helps them feel connected to your mission, plus they will keep coming back to volunteer with your organization, year after year. Sometimes just having a cake with the CERT logo can help recognize your CERT volunteers. For example, [State of Ohio EMA CERT Awards webpage](#).



## ❖ Volunteer Liability Concerns

According to the [FEMA CERT Liability Guide - A Risk Management Overview for Local CERT Programs](#), when disasters occur, professional first responders are not the first on the scene. If access is obstructed or the agency's capacity is exceeded, it may be hours - or days - before professional help arrives. In this environment, nonprofessional members of the public spontaneously reach out to help those affected. Without information and training, however, spontaneous assistance can sometimes fail to meet its objectives. Community Emergency Response Team (CERT) programs support and direct post-disaster public energy to ensure that non-professional response is as safe and effective as possible. CERT program activities can create risk and adverse consequences. However, perceptions about liability may be a larger barrier for CERT formation, activities and partnerships than is justified by reality. There is no indication that CERT programs have any unusual liability experience. Still, perceptions can pose as great a barrier as reality. The purpose of this Guide is to offer information and suggested techniques to help CERT programs overcome this barrier. Those who benefit from this information include local CERT programs, their sponsoring government agencies and legal advisors, and CERT members themselves. See: [VIS - Fundamentals of a Volunteer Risk Management System](#).



The [FEMA CERT Liability Guide - A Risk Management Overview for Local CERT Programs](#) is available for general informational purposes only, and is intended to educate CERT program managers, instructors, volunteers, sponsoring agencies, and legal advisors about liability and risk management. We must make every effort to ensure safety during activities, training, and exercises. A volunteer should not attempt to perform actions for which the person is not trained and prepared to perform. Prior to accepting a volunteer assignment, each volunteer must ask themselves, "What types of incidents am I trained for and willing to respond?" Currently, no provisions exist for compensating volunteers for time lost from work, mileage, meal costs, etc. A volunteer

should neither drive unfamiliar vehicles (licenses and insurance should be confirmed), operate unfamiliar equipment, nor attempt to provide services without prior experience or training. In a disaster situation, the immediate and positive desire to help may impede the response and turn a volunteer from a helper into an additional victim.

Some people fear being sued because of incorrectly performing first aid in an emergency. However, in almost every case, this fear is unwarranted. All states have passed Good Samaritan laws to encourage assisting those in need. These laws protect anyone who:

- Voluntarily provided assistance, without expecting or receiving compensation
- Was reasonable and prudent in their actions
- Did not provide care beyond their training, and
- It was not grossly negligent in delivering emergency care.

Fortunately, the federal [Volunteer Protection Act of 1997](#) grants those who perform volunteer work for nonprofit organizations or a governmental entity immunity from civil liability for injuries they cause by their acts of negligence while volunteering. This Act states in part, "...no volunteer of a nonprofit organization or governmental entity shall be liable for harm caused by an act or omission of the volunteer on behalf of the organization or entity if ... the volunteer was acting within the scope of the volunteer's responsibilities in the nonprofit organization or governmental entity at the time of the act or omission; ...authorized by the appropriate authorities for the

activities; ...the harm was not caused by willful or criminal misconduct, gross negligence, reckless misconduct, or a conscious, flagrant indifference to the rights or safety of the individual harmed by the volunteer; and the harm was not caused by the volunteer operating a motor vehicle, vessel, aircraft, or other vehicle ...” Please consider reviewing:

[42 U.S.C. 14503 - Limitation on liability for volunteers, Tennessee Good Samaritan Law - TN Code Annotated 63-6-218](#) and [Governmental Immunity, and TN Code Ann. § 29-20-201.](#)

- [Cal OES - Disaster Service Worker Guidelines](#)
- [California Disaster Service Worker Volunteer Program website](#)
- [CERT Disaster Response Best Practices](#)
- [TENNESSEE STATE PARKS – Release of Liability pdf](#)
- [Sample – Dickson County Help Centers Volunteer Waiver of Liability form](#)
- [Sample North Dakota CERT Informed Consent, Waiver and Release of Liability Agreement](#)
- [Sample North Dakota Parent or Guardian’s Agreement of Informed Consent, Waiver and Release of Liability](#)

**Q: Can Teenagers under the age of 18 participate in CERT training and exercises?**

**A: Yes, but this is a local decision.** CERT programs should consider requiring teenagers (ages 13-17) who wish to participate in CERT training do so only with a parent’s or guardian’s prior written permission. [Sample Parental Consent and Risk Waiver Form for Teen CERT Volunteers](#)

**Self-deploying CERTs** - Occasionally, individual CERT trained volunteers in your community may choose to respond on their own (“self-deploy”) to local incidents, such as assisting at a traffic collision scene or through a Volunteer Reception Center (VRC) as individuals. **It is recommended you notify all your CERT volunteers ahead of time when they assist at an emergency scene, they are simply acting as Good Samaritans and may NOT “self-deploy” wearing CERT logo clothing (e.g., green CERT vests or CERT helmets). Usually, CERTs should NOT self-deploy in a disaster unless they have been pre-authorized to do so by their sponsoring organization for that jurisdiction.** However, in the **aftermath of a disaster**, it is a common practice for sponsoring organizations to allow CERT trained individuals to self-deploy in CERT gear **to assist their local neighbors and co-workers**. Then CERT volunteers should report to their designated staging area, and the first volunteer to arrive will become the initial Team Leader (TL) for the disaster response. **During CERT training each local CERT program should clearly communicate their specific self-deployment policy to all individuals taking their CERT training.**

**Only Sponsoring Organizations shall deploy CERTs beyond the immediate area.** In a disaster, CERT volunteers may be the first to arrive on scene in their own neighborhoods, such as when assisting neighbors and co-workers. In that scenario, CERTs can conduct basic disaster response operations until professional first responders arrive. CERT volunteers can and should act within the scope of their training as Good Samaritans when situations arise. However, individuals with CERT training are prohibited from self-deploying in CERT regalia (e.g., green CERT vest & helmet) **to emergencies and disasters beyond a need in their immediate area, unless they are approved to do so by their sponsoring organization**, such as their Fire Department or the local Emergency Management Agency.

**CERT Teams should NOT self-deploy to disaster scenes in other jurisdictions UNLESS approved by their sending sponsoring agency and the receiving agency with jurisdiction for the disaster.**

## ❖ CERT Code of Conduct

You may wish to consider drafting a "**CERT Code of Conduct**" for a Community Emergency Response Team which outlines the expected behavior and ethical standards for volunteers, emphasizing key points like prioritizing safety, following instructions from designated leaders, maintaining confidentiality, acting with professionalism, and putting the needs of the community first during emergency response situations. Key elements of a CERT Code of Conduct could include:

**Safety First:** Always prioritize personal safety and the safety of others during any response activity.

**Follow Instructions:** Adhere to directions given by designated team leaders and emergency management officials.

**Confidentiality:** Protect sensitive information obtained during response operations.

**Professionalism:** Maintain a respectful and courteous demeanor when interacting with the public and other responders.

**Teamwork:** Work collaboratively with other CERT members to achieve the best possible outcome.

**Reporting Issues:** Report any concerns or potential safety hazards immediately to the appropriate authorities.

**Community Focus:** Act with the best interests of the community in mind during a disaster response.

**No Discrimination:** Treat all individuals with respect and avoid any discriminatory behavior.

**Training and Preparedness:** Actively participate in regular training exercises to maintain skills and knowledge.

**Personal Responsibility:** Understand and comply with all local laws and regulations related to emergency response.

**Sample CERT Codes of a Conduct and Releases:** [Stansbury Park, UT CERT](#), [Puyallup, WA - CERT Code of Conduct](#), [San Diego County CERT Council Code of Conduct](#).

## ❖ Volunteer Insurance for CERT Programs

CERT organizations should not rely solely on a signed "Waiver of Liability" for CERT programs with "Retained" volunteers. Consider obtaining liability and injury coverage for your volunteers. And check if you have any existing policies that can be expanded to cover your volunteers. Consider viewing this lengthy but excellent [Better Impact](#) liability overview video by William Henry: ["What could possibly go wrong? Managing the risks of Volunteer Engagement \(52:45 min.\)."](#)



Volunteer liability insurance may be available through private insurers to protect volunteers, including excess medical, excess liability, and excess auto liability insurance. For example, **Brian Frost, of [Volunteer Firemen's Insurance Services, Inc. \(VFIS\)](#), has recently indicated they could provide insurance coverage for both EMA volunteers and CERT volunteers.** He

stated VFIS is the #1 insurer of Emergency Services in Tennessee. And [Volunteers Insurance Service Association, Inc. \(VIS®\)](#) provides insurance and risk management services for volunteer-based organizations since 1972. Contact [William.Henry@visvolunteers.com](mailto:William.Henry@visvolunteers.com) 703-778-7310. Also, [CIMA Volunteers Insurance](#) is another provider option. Always consider insuring your volunteers separately from your agency or organization general liability insurance coverage.

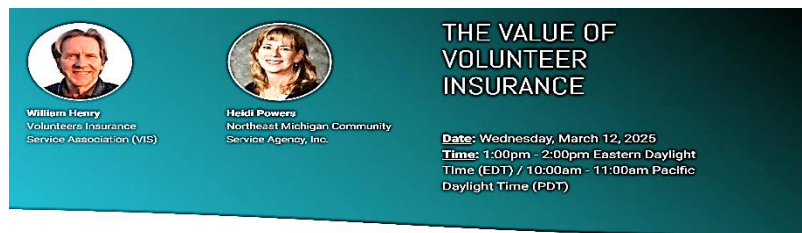
Tennessee Worker's Compensation or health care coverage may apply to injured emergency management volunteers, especially if the CERT program is sponsored by a government agency. CERT volunteers could also potentially be covered under a Worker's Compensation policy for medical expenses. But those policies do not provide coverage for Line-of-Duty-Death or Disability. Typically, groups bridge the gap in the Worker's Compensation coverage with the VFIS Accident & Sickness policy which provides the volunteers with Death, Disability, and Medical benefits that covers whatever Worker's Compensation denies. **Please note: Any insurance coverage must be paid for by the CERT program's local sponsoring organization.**

According to VFIS, they insure over 60% of all Emergency Services in TN. Their main groups are Fire Departments, Rescue Squads, EMS, EMAs, and 911s. VFIS says they could provide insurance coverage to County EMA offices and all their volunteer programs, including CERT programs. VFIS provides insurance for liability, property, portable equipment, crime (bonds), auto, accident & sickness, and/or Workers Compensation. They indicated there may be multiple ways of classifying CERT volunteers for Worker's Compensation. But typically, VFIS uses either volunteer firefighters or clerical classifications. VFIS has two offices in Tennessee. VFIS/The Steve Frost Agency, covers Middle and West TN and is in Hendersonville, TN. The other office, VFIS/J. Mark Bowery Insurance, is in Kingsport, TN and they also cover East TN and southern Virginia. They can email you detailed brochures about what they offer, and their website is VFIS.com. Below is their contact information. Volunteer Tennessee is a State Agency and is not endorsing any specific insurance carrier. If you have any questions, please contact the insurance providers directly.

**\* NO endorsements should be implied for any commercial products or services in this CERT Resource Guide.**

**VFIS/The Steve Frost Agency\***  
**Main Contact: Brian Frost**  
**PO Box 2499**  
**Hendersonville, TN 37077**  
**615-824-6541**

**VFIS/J. Mark Bowery Insurance\***  
**Main Contact: Mark Bowery**  
**1225 N. Eastman Rd. Suite 120**  
**Kingsport, TN 37664**  
**423-288-8347**



On March 12, 2025, [Better Impact](#) presented an insightful webinar - [The Value of Volunteer Insurance](#) - featuring William Henry, Vice President of [Volunteers Insurance Service Association \(VIS\)](#), and Heidi

Powers, Project Director, Foster Grandparent and Senior Companion Volunteer Programs, Northeast Michigan Community Service Agency, Inc. With over a decade of experience managing programs that rely on volunteers, Heidi will share her firsthand experience with volunteer insurance, including its role in addressing claims and safeguarding programs like hers.

- Why volunteer insurance is essential for protecting your program and participants.
- Insights into common claims and how volunteer insurance provides peace of mind.
- Real-world examples of how volunteer insurance supports operations during challenging times.
- Expert tips on selecting the right volunteer insurance coverage for your needs.

This webinar offered valuable knowledge to strengthen your volunteer program's foundation. VIS provides volunteer insurance and risk management services to organizations with engaged volunteers serving their communities. (No Volunteer Tennessee endorsement should be implied.)

## ❖ CERT Resource Typing

"CERT Resource Typing" refers to the process of classifying and defining the capabilities of Community Emergency Response Team (CERT) volunteers as deployable resources during a disaster, allowing for efficient identification and request of specific skillsets needed during an incident, all within the framework of the National Incident Management System (NIMS) resource typing standards set by FEMA.

Key points about CERT Resource Typing:

- **Standardized Language:**  
By using NIMS resource typing, different agencies can easily understand the capabilities of a CERT volunteer, enabling seamless mutual aid across jurisdictions.
- **Defining Roles:**  
Each CERT position, like a Team Leader, Medical Responder, or Communications Specialist, has a defined set of skills and responsibilities, categorized as a "resource type".
- **FEMA Toolkit:**  
The ["Resource Typing Library Toolkit" \(RTL\) provided by FEMA](#) allows users to access detailed information about each CERT resource type, including job titles, position qualifications, and task lists.
- **Efficient Deployment:** Enables emergency managers to quickly identify and request the specific CERT personnel needed for a particular disaster situation.
- **Improved Coordination:** Facilitates better collaboration between different agencies by using a common language to describe resource capabilities.
- **Volunteer Management:** Allows for effective management and utilization of CERT volunteers during an emergency.

CERT members may be called upon to assist professional responders with operational activities under the command and control of an affiliated or sponsoring local government agency. To prepare for participation in operational activities, members complete training about the Incident Command System. Many CERT programs go beyond the baseline training and offer their members supplemental training to develop additional skills. Resource typing enables communities to have confidence that the resources they receive have the required capabilities.

**Currently, Tennessee does NOT have mutual aid agreements for CERT volunteers and Resource Typing is optional for local CERT programs.** However, the [National Qualification System \(NQS\) Job Titles/Position Qualifications](#) and [Position Task Books \(PTBs\)](#) have position descriptions which may be useful for volunteers who help with local CERT program management, administrative tasks, deployment, and training. **Resource typing can guide EMAs when staffing unfilled volunteer positions in a disaster response or recovery,** or as a benchmark for volunteers wishing to pursue advanced CERT training. [Click here to download the Job Titles and Position Qualifications](#) (type CERT in the search box). [FEMA Resource Typing for CERT Overview and Q&A Part 1 - Part 2](#) and see the [FEMA Prep Tool Kit CERT PTBs](#) for the full list of CERT PTBs.

- [CERT “Volunteer” Resource Typing Definition - Draft Volunteer PTB](#) Qualifications for CERT Volunteers: Trained in CERT Basic in disaster response fire safety, light search & rescue, team organization, disaster medical operations. Type 2: 18-hour CERT Basic and IS-100, IS-200, IS-700, IS-800. Type 1: **Plus** IS-288 and IS-505 and completion of the NQS Position Task Book for the NIMS Type 1 CERT Volunteer.
- [CERT “Team Leader” Resource Typing Definition - Draft CERT Team Leader PTB](#) - A CERT Volunteer who directs CERT team activities. Qualifications: Same as “CERT Type 1 Volunteer” **Plus** - Type 2: IS-244, IS-317, IS-703. Type 1: **Plus** G427: CERT Program Manager course.
- [CERT “Section Chief” Resource Typing Definition – Draft of CERT Section Chief PTB](#) – An experienced CERT Volunteer Team Leader who is responsible for a specific functional area within the local CERT program. Qualifications: Same as “CERT Type 1 Team Leader” **Plus** the Knowledge, Skills, and Abilities: 1. Understanding of the functions of a Section Chief. 2. Understanding of the functions of the assigned functional area. Experience: Successful completion of the NQS Position Task Book (PTB) for the National Incident Management System (NIMS) CERT Section Chief.

### ICS and CERT Position Checklists

- [EMSI - Emergency Management Services International, Inc. – ICS Forms PDF and Word](#)
- [FEMA - EMI ICS Forms PDFs](#)
- [Fillable CERT Forms](#) - Includes the standard forms plus several custom PDFs.
- [Fire Group Leader Checklist](#)
- [FIRESCOPE - ICS and MACS forms and documents, Operational Guides and Job Aids, White Papers, and Historical documents.](#)
- [Texas IMT – ICS Forms page](#)
- [Web.Archive.org - Wayback Machine - FEMA ICS Forms](#)

The following are courtesy of Olathe, KS - CERT Program

- [Assignment Status](#)
- [Communications Checklist](#)
- [Damage Assessment Survey](#)
- [Incident Commander Checklist](#)
- [Logistics Section Chief Checklist](#)
- [Logistics Supplies and Equipment](#)
- [Medical Area Treatment List](#)
- [Medical Director Checklist](#)
- [Medical Treatment Form](#)
- [Medical Triage Form](#)
- [Message Form](#)
- [Operations Section Chief Checklist](#)
- [Organizational Chart](#)
- [Safety Officer Checklist](#)
- [Search and Rescue Director Checklist](#)
- [Search and Rescue Map Grid](#)
- [Staging Manager Checklist](#)
- [Staging Volunteer Information Sign-In Sheet](#)
- [Supply Manager Checklist](#)
- [Trailer Packet Content List](#)

## ❖ CERT - Sample SOGs, SOPs, MOUs, Bylaws, and Volunteer Applications

- [Campbell County Volunteer Management Plan](#)
- [CERT Program Manager Course UNIT 8: POLICIES AND PROCEDURES](#)
- [Henry County, Indiana OEM Volunteer SOPs and Guidelines - Rights and Responsibilities of Emergency Management Volunteers.](#)
- [Laramie County, WY EMA-CERT Standard Operating Guidelines \(SOGS\)](#)
- [Massachusetts EMA - Best Practices Guide - City of Gloucester Sample CERT SOGs](#)
- [NCA - CERT PDR Program Manager Series: Policies and Procedures \(1:07:44\)](#)
- [Millersville.edu - CERT Policies & Procedures](#)
- [City of Novi, MI - CERT Standard Operating Guidelines - pdf](#)
- [City of Novi, MI - CERT Guidebook and Policies - pdf](#)
- [Salt Lake City Community Preparedness Council: CERT Coordination Guide](#)
- [San Diego Fire & Rescue - CERT Procedures and Resources](#)
- [San Diego County CERT Council Code of Conduct](#)
- [San Diego County CERT Activation Procedures](#)
- [San Mateo, CA Fire Dept. CERT - SOPs](#)
- [Santa Cruz Co., CA - Sample CERT Activation SOPs](#)
- [Sevier County, TN cert operating guidelines soggs.pdf](#)
- [State of California DSW Program Guidance](#)
- [Union City, CA CERT - Sample Bylaws](#)
- [Utah CERT Program Recommendations](#)
- [Yamhill County, OR - Policies & Procedures Manual pdf](#)

### FOGs:

- [California Volunteers - CERT Field Operations Guide - FOG \(2010\)](#) This downloadable PDF is designed to provide quick access to critical information. This FOG will assist CERT volunteers helping communities respond to emergency situations.
- [QUICK SERIES - New CERT Companion Guide for Advanced Operations](#) This durable laminated spiral pocket guide provides a general overview of disaster response, including what happens behind the scenes, what CERT volunteers should expect, and how to have a successful disaster deployment. [For ordering info contact Quick Series Publishing.](#)
- [QUICK SERIES - CERT Field Operations Guide - FOG](#) This 3 in. x 5 in. pocket guide provides CERT members with easy-to-follow and accessible instructions to help local disaster recovery efforts (Color coded tabs, Durable, and Weatherproof).
- [Rite in the Rain - CERT Field Operating Guide - FOG](#) This All-Weather CERT Guide is a comprehensive companion filled with practical reference material to help refresh core skills CERT Yellow cover with White All-Weather paper.

### MOUs:

Some government agencies require a Memorandum of Understanding (MOU) or Memorandum of Agreement (MOA) with CERT programs in their jurisdictions before they are sponsored or are deployed to an incident, event, or disaster. You will not find a single, standardized PDF for a MOU between a city/county government and a Community Emergency Response Team (CERT) because MOUs are specific agreements tailored to the needs of each locality and CERT program. Instead, to get a specific sample PDF, you must contact the city or county emergency management agency

where you live to see if they have a template or a previous MOU which they can share. If not, you can potentially find templates for MOUs online from emergency management organizations. But remember these will require modification to fit your local situation. Below are links to some samples.

#### MOUs:

- [\*FEMA - Disaster Specific Memorandum of Understanding Guidelines\*](#)
- [\*MOU between the Volunteer West Virginia \(State Service Commission\) and local CERT programs\*](#)
- [\*MOU between the Volunteer West Virginia \(State Service Commission\) and local Teen CERT programs\*](#)
- [\*MOU between Volunteer Florida and Florida CERT Association\*](#)
- [\*MOU for Volunteer Participation in James Co. Virginia CERT program\*](#)
- [\*MOU between the James City County - Virginia CERT program and CERT volunteers\*](#)

#### APPLICATIONS

- [\*Anderson County EMA - CERT - Volunteer Interest Form - \(ReadyOp\)\*](#)
- [\*Lebanon - Wilson County, TN – Sample CERT Application\*](#)
- [\*Sevier County, TN cert application sevier county 2 .docx\*](#)
- [\*Tipton County, TN Constable's - CERT - Sample Code of Ethics and CERT Volunteer Application\*](#)
- [\*Upper Cumberland CERT Basic Course - Interest Form\*](#)
- [\*West Metro, Minnesota CERT - Sample Volunteer Application pdf\*](#)

#### FORMS:

- Many thanks to Glenn C. Devitt, Community Resilience Coordinator at Portland, Oregon Bureau of Emergency Management, for graciously sharing three comprehensive Wiki platform pages of CERT forms and policies <https://volunteerpdx.net/>, the [\*Basic Training Syllabus\*](#), and [\*Volunteer Support Function\*](#).
- [\*CERT IDs – Merit Issues the National CERT Association - NCA Digital Credentials\*](#)
- [\*CERT IDs - Salamander Live – CERT Credentials\*](#)
- [\*CivicPlus - Initial CERT Program Set-up Checklist\*](#)
- [\*FEMA's Free CERT Printed Materials Online Ordering Tool\*](#)
- [\*LAFD - CERT Sample Forms and the Role of the Scribe - Video \(45:40\)\*](#)
- [\*San Diego County CERT MAP - ICS 201\*](#)
- [\*San Diego County CERT MAP - ICS 202\*](#)
- [\*San Diego County CERT MAP - ICS 214\*](#)
- [\*Santa Cruz Co, CERT - Household-Neighborhood Emergency Checklist \(pdf\)\*](#)
- [\*Santa Cruz Co, CERT - Winter Preparedness Checklist \(pdf\)\*](#)

## ❖ Promoting and Recruiting for your CERT Program

If your CERT program is planning to announce an upcoming CERT course, and you would like us to share it on our [State of Tennessee - Volunteer Tennessee CERT webpage](#), social media, and TN.gov calendar of events page, please always feel free to forward the details to [Don.Sowers@tn.gov](mailto:Don.Sowers@tn.gov) and we will amplify it on our webpages and social media. For example, here is a link to a recent [event calendar webpage announcing Sevier Co. EMA and Shelby County EM - CERT Basic classes](#).

As you teach our neighbors, students, and co-workers about preparedness, CERT programs will also need the support of the key stakeholders in the community. Get your message out! Have a CERT booth at a Preparedness Fair or at a [National Night Out](#) event.



The following link is to a great video of a CERT information booth: [Paso Robles, CA Preparedness Fest - Facebook post](#). Your CERT program partners could include local administrators, elected officials, first responders, community groups, faith-based organizations, schools, HOAs, businesses, and all members of the community. [CERT Discussion Board \(Public Facebook Group\)](#). A discussion thread about setting up a CERT information booth at public events, handouts, table displays, etc.



Suggestions for organizing and promoting your CERT program are presented in the [CERT Program Manager course](#). And we must always remember to conduct outreach in other languages. English may not be the first language of many of our residents. For a terrific family oriented Spanish speaking community preparedness program see the [Listos \(Ready\) website](#).



- [FEMA - Free Publications](#) You can download PDF copies of preparedness materials and order individual emergency preparedness flyers with the FEMA warehouse [online ordering tool](#).
- [CalOES - CERT Program Promo - 2014 \(9:00 min.\)](#)
- [Community Emergency Response Teams in Action \(6:27\)](#) A good video to educate people about Community Emergency Response Teams. CERT members from California, Florida, and Texas explain how they come together to prepare their communities and assist their neighbors and co-workers during emergencies.
- ["CNN" - Humorous disaster preparedness campaign – YouTube \(2:40\)](#)
- [Download the LAFD CERT Flyer - English](#) [Download the LAFD CERT Flyer - Spanish](#)
- [Find a CERT website](#) allows the public to search for a nearby CERT program by Zip code.
- [Get Involved: Join CERT Today](#)
- [Univ. of Utah - School of Medicine - Sample Hybrid CERT flyer](#) [Sample CERT Flyer](#)
- [FEMA - Outreach Initiatives and Training Activities for CERT pdf](#)
- [FEMA Podcast Episode 12: CERT \(CERT\) Jul 22, 2020 Download Audio](#) [Download Transcript](#)
- [FEMA-ICPD – Preparedness Community](#)
- [Community Emergency Response Team \(CERT\) Training "How it all began." \(7:56\)](#)

- [Alameda CERT In Action 2012 - Responding to a Windstorm \(19:13\)](#)
- [Campbell - CERT Basic practical training sessions \(2:24\)](#)
- [Campbell - CERT Training Disaster Simulation Exercise \(3:54\)](#)
- [Campus CERT - Pulaski College, IL \(3:03 min.\)](#)
- [CERT Pandemic Roles \(4:56\)](#)
- [CERTs Help with Vaccination Rollout - 2021 FEMA Article](#)
- [CERT in Action” 2013 version \(19:14 min.\)](#)
- [CERTs Take Action: Financial Readiness - FEMA Article](#)
- [CERT Teams in Action - 30 second promo video clip](#) A good clip for showing to people at a Preparedness Fairs, Information Booths, etc.
- [City of Cape Girardeau, MO - CERT Cartoon \(1:10\)](#)
- [Citizen’s Corps. - CERT Recruitment video \(4:59\)](#)
- [Community Emergency Response Teams in Action 2018 \(6:28 min.\)](#)
- [Douglas County, KS - CERT webpage](#)
- [FEMA - CERT Fact Sheet useful for informing others about CERT](#)
- [FEMA - Preparedness Community Newsletters with Articles about CERT](#)
- [”The Office” Fire Drill - YouTube \(4:57\)](#)
- [Greenville Co., SC - CERT Training Course | What to Expect \(2:20\)](#)
- [History of the CERT Teams 2020 \(7:56 min.\)](#)
- [Lake Forest, CA - CERT Training Announcement Video \(2:16\)](#)
- [Michigan Preparedness Fair Plan and Layout](#)
- [Nashua, NH CERT Program Manager Discusses a CERT Final Exercise \(2:49\)](#)
- [New York City EM Prep Talk - Podcast Episode 19: 15 Years of CERT \(27:06\)](#)
- [Santa Barbara CERT Program Overview and Recruiting Video \(6:06\)](#)
- [Spanish Speaking CERT Teams - en Español \(10:53\)](#)
- [”The Big Bang Theory” - Emergency Preparedness Drill -YouTube \(1:52\)](#)
- [”The Simpsons” Safety Drill – YouTube \(2:10\)](#)
- [Ventura Co. CERT - ”People like You” video \(3:02\)](#)
- [Williamson County, TN EMA Director Todd Horton ”What is Emergency Management?” and the Potential Benefits of a CERT Team - YouTube Video \(42:02\)](#)
- [When Disaster Strikes - Intro to the CERT Program \(3:59\)](#)



Consider emphasizing to your community leaders the benefits of having trained CERT volunteers who could assist with traffic and pedestrian control during community events such as PODs, Parades, and Runs.



(Photos: A CERT volunteer directing a group of people running on a street in Cannery Row section of Monterey, CA. Second photo of a CERT volunteer directing traffic away from a closed roadway).

## ❖ CERT News – Social Media Sites, Groups, Articles, and Posts

Facebook “Private Groups” require you request to be a member before you can view their posts.

### Social Media Policies or Guidelines

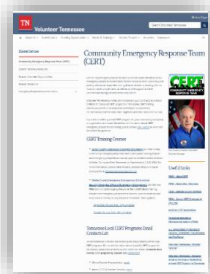


Once your CERT program has been established, consider stressing to volunteers that taking or sharing of photos or videos on social media of any survivors, disaster scene, emergency response, or other locations where CERT volunteers are present may involve privacy issues and could result in erroneous messages to the public. **Early on, consider establishing a social media policy for your CERT program well before hosting a drill or exercise.**

Sample [Sevier County EMA – CERT Basic Course flyer](#) he and Washington County/Johnson City CERT program - Basic Academy Registration webpage.

- [CERT \(Community Emergency Response Team\) - Facebook Private Group](#)
- [CERT Community Emergency Response Team of Knoxville – Facebook Private Group](#)
- [CERT Discussion Board - Facebook Private Group](#)
- [CERT Instructors - Facebook](#)
- [CERT Radio Operators - Facebook](#)
- [East Tennessee CERT - Facebook Page](#)
- [Galaxy Digital Article - A Beginner's Guide to Starting a CERT Program \(A. Ferry\)](#)
- [Galaxy Digital Article - Everything You Need to Know About CERT Teams \(A. Ferry\)](#)
- [LAFD CERT Central Bureau - Facebook](#)
- [LaPorte, TX – Sample - Upcoming CERT Basic course flyer - PDF](#)
- [Mid America - Official TEEN CERT](#)
- [Monterey, CA CERT - An excellent example of a local program's Facebook page](#)
- [Monterey, CA CERT - Terrific Sample Monthly Newsletters](#)
- [Nashville Office of Emergency Management - CERT - Facebook page](#)
- [National CERT Council - Facebook Group](#)
- [National CERT Program Management - Facebook Group \(Sample CERT Posts and Flyers\)](#)
- [National Community Emergency Response Team Organizations – Facebook Private Group](#)
- [News Channel 3 - Memphis, TN News – Germantown, TN CERT Training Article](#)
- [Oakland, TN – CERT - Facebook page](#)
- [Official TEEN CERT \(Facebook\)](#)
- [Paso Robles, CA Preparedness Fest - Facebook post \(Fabulous video of a CERT booth\)](#)
- [Sevier County EMA – CERT Basic Course flyer](#)
- [Sevier County Emergency Management Agency's Facebook Post - “We Want You”](#)
- [Tennessee Disaster Response Team | Monterey TN](#)
- [WBBJ – 7 – Eyewitness News - Jackson-Madison Co. EM?A “Drill for Union Univ. nursing students](#)
- [White County, TN C.E.R.T. \(Community Emergency Response Team\)](#)

## ❖ CERT Webpages



Please let us know if we omitted a link to your EMA, Fire, or CERT Program website and social-media pages.

[State of Tennessee - Volunteer Tennessee - CERT Training - Local CERT Programs Listings](#)

Please let us know if your local Tennessee CERT program listing or upcoming training sessions were omitted from this list.

Thanks, [donsowers@tn.gov](mailto:donsowers@tn.gov)

- [2Serve](#) This Tennessee based 501c3 provides CERT training for academy and college age young people throughout the southeast by involving them in the mission of the Seventh-day Adventist Church. However, they teach CERT without proselytizing. **2Serve may also be available to teach older adults CERT for other non-affiliated organizations and schools.** They charge for their CERT classes on a per-person basis to recover their course costs.
- [Be Ready Utah - CERT Resources - Videos, Downloads, and Links](#)
- [Utah CERT Resource Library – Includes CERT Training Tools and multiple PDFs](#) Thank you James Ray, Utah State Citizen Corps - CERT Coordinator, for sharing these resources!
- [Carter County, TN EMA - CERT](#)
- [City of Bartlett, TN Emergency Preparedness - Official Website](#)
- [City of Germantown, TN CERT Training](#)
- [Fayette County, TN - CERT](#)
- [Kentucky-Tennessee Conference of SDA CERT Training Article](#)
- [Knoxville-Knox Co. Emergency Management Agency](#)
- [Lebanon, TN - CERT](#)
- [Montgomery County, TN - CERT](#)
- [Munford, TN - Community Emergency Response Team \(CERT\)](#)
- [Nashville - Davidson Co., TN OEM – CERT](#)
- [Sevier County, TN - CERT](#)
- [Stay Safe Shelby - Shelby County, TN - Office of Preparedness - CERT](#)
- [Tennessee State University – Campus Emergency Response Team](#)
- [Town of Oakland – Fayette County, TN EMA - CERT](#)
- [Douglas County, Kansas - CERT](#)
- [Irvine, CA - CERT](#)
- [LAFD, CA - CERT](#)
- [Monterey, CA - CERT](#)
- [Nashua, NH - CERT](#)
- [Olathe, KS - Fire Department - CERT](#)
- [Ready Long Beach, CA](#)
- [Sacramento, CA - CERT](#) An excellent CERT website!
- [Santa Clara County, CA - Teen CERT](#)
- [Tipton County, TN Constable’s CERT](#)
- [BeReady - State of Utah - CERT](#)
- [Washington County - Johnson City, TN EMA - CERT](#)
- [Washington Co./Johnson City CERT Basic Academy Registration - Sample Online Application](#)
- [Williamson County, TN Office of Public Safety – CERT](#)

## ❖ Developing Trainers to Teach CERT Courses



The CERT Train-the-Trainer course prepares CERT program leaders and new trainers to deliver the CERT Basic Training course to our

communities and organizations. In addition to learning how to communicate the core values of CERT, students learn how to create a comfortable yet managed learning environment. **Please note, if you already took the CERT Train-the-Trainer course years ago you are not required to take the updated T-T-T course.** However, you may wish to take it again as the [CERT Basic training course](#) content was modified in 2019, see the [CERT Basic Training Participant Manual](#). Note, before someone takes the T-T-T class, they must first complete the prerequisite CERT Basic Course. However, first responders only need to complete the FEMA online [IS-317 course](#) as a prerequisite to taking the CERT Train-the-Trainer course. On October 1st, 2024, there was a **new FEMA Mandatory Prerequisite added, [FEMA - EMI Course IS-0013: EMI Conduct and Behavior](#). This EMI IS-0013 course is required** before participating in any EMI training at the NETC Campus. However, this course only needs to be completed once.

**Prior to taking the T-T-T course**, you may wish to review the documents and PPTs which FEMA provides for teaching a CERT Basic training course. The [FEMA Preparedness Community Additional Community Emergency Response Team \(CERT\) Training Resources webpage](#) includes links to the CERT Basic Participant Manual, CERT Basic Instructor Guide, CERT Basic PowerPoint, CERT Hazard Annexes Instructor Guide, CERT Hazard Annexes Participant Manual, CERT Hazard Annexes PowerPoint, How to Start a CERT, and CERT Program Guide. Also, here is a link to the [2019 version of the CERT Train-the-Trainer Participant Manual](#). **For current CERT T-T-T materials, you will need to request them from NDEMU (formerly EMI).** Stacey Mickles is the new contract for CERT training materials. These materials were removed from the publications list as there are instructor and course requirements that will be verified before sharing the content. Your FEMA Rep can also request them.

**To enroll in one of these EDMU courses, you must have a referral from a CERT Sponsoring Organization and the State Training Officer. To facilitate the necessary approvals, well before submitting a FEMA-EMI training application for a CERT virtual or in-person Program Manager or T-T-T course, please contact [don.sowers@tn.gov](mailto:don.sowers@tn.gov) for assistance.**

These courses are taught virtually or in-person at [the National Emergency Training Center \(NETC\) University \(video\)](#). While students only pay for their meals, lodging on campus is provided by FEMA-EMI at no charge during the courses. Students who fly to B.W.I. Airport in Baltimore will have the option to use a free shuttle to get to campus and return to BWI. Interested participants can register on the [NETC Admissions Application website](#). For more information see: [CERT Train-the-Trainer Course - PowerPoint slide deck](#), [National CERT Association – NCA CERT Train-the-Trainer - Supplemental Training Webinars](#). The FEMA classes fill up quickly. But FEMA offers them several times per year. Those who teach only one or two of the units of the CERT Basic Training Course may do so without taking the CERT T-T-T course. However, the CERT T-T-T course would give them a needed overview as well as improve their teaching skills.

**First Responder Instructors (e.g., fire, police, EMS, RNs, etc.) do not have to take the full CERT Basic training civilian course to become CERT instructors. Instead, a first responder can simply take the [IS-317 FEMA / EMI Independent Study introductory course about CERT and general disaster preparedness](#) as well as the [Train-The-Trainer course](#) to be full CERT instructors and teach all units**

in the CERT course for civilians. **However, CERT programs may use any first responders, or other subject matter experts, to help teach a portion or individual units in the CERT basic training course without them needing to take IS-317.** But IS-317 is strongly recommended for all first-responder CERT instructors in Tennessee. For a copy of your IS-317 completion certificate, see the [EMI Self-service portal](#) to download or print a copy of EMI certificates or transcripts.

**Civilian CERT Instructors** – CERT programs are responsible for ensuring that all instructors are adequately trained and have appropriate experience to deliver CERT training. Qualified trainers may come from many backgrounds and have different relevant skillsets. Civilians who are subject matter experts may help teach any of the individual units in the CERT Basic course without taking the CERT Train-the-Trainer course if they are paired with a qualified T-T-T trained instructor. And if they take the [CERT Basic Training course](#) and the [Train-the-Trainer course](#), then they may teach the full CERT course or manage the presentation of an in-person CERT course. **But please note**, the IS-317 course mentioned previously is only an overview of CERT training activities for first responders. It does not take the place of the CERT Basic course training required for civilians to be full course CERT instructors. [Sample CERT Basic Training Instructor Expectations and Responsibilities](#). Also, local jurisdictions, schools, and faith-based organizations may wish to subcontract with a Tennessee based 501(c)3 CERT program such as [2Serve](#) to perform CERT training for them.

## ❖ FEMA - NDEMU - EMI Training Applications



The National Disaster and Emergency Management University (NDEMU) is [accepting registrations for training courses at NETC in Emmitsburg, Maryland.](#)

These in-person trainings strengthen capabilities for state, local, Tribal, and territorial (SLTT) government officials, emergency managers, first responders, and community partners nationwide.

[Apply early](#) — seats will be filled on a first-come, first-served basis.

Explore [upcoming courses](#) tailored for emergency managers and public officials.

Register early as seats are limited and filled on a first-come, first-served basis.

- **Questions?** Email [NETCAdmissions@fema.dhs.gov](mailto:NETCAdmissions@fema.dhs.gov).
- Follow [@FEMA on social media](#) or the [FEMA NDEMU](#) page on LinkedIn for training updates.

FEMA's National Disaster & Emergency Management University (NDEMU) provides specialized training and educational programs to enhance emergency management capabilities for state, local, tribal, territorial, and Federal government, volunteer, and private sector emergency managers. NDEMU offers comprehensive courses, continuing education units, and professional development opportunities designed to strengthen the Nation's capacity to prepare for, respond to, recover from, and mitigate disasters and emergencies that impact the American people.

### **UPDATE info for FEMA - CERT Program Manager or Train-the-Trainer courses applications.**

To sign up for FEMA's offerings of the CERT Program Manager or Train-the-Trainer courses, you will first need to [apply for a FEMA Independent Study Student Identification Number \(SID\)](#). And you should already be part of or forming a recognized CERT program in Tennessee. You must be pre-approved to attend by your local sponsoring organization, which requires attaching a letter from them authorizing you to take a course.

The Tennessee Emergency Management Agency (TEMA) must also process your training application. **However, TEMA's approval of the application is only to enable the application to be**

processed by FEMA. It does not constitute approval of any costs or reimbursements that may be associated with the training. On the FEMA [NETC Online Admissions Application](#) they will ask you for your “Head of Organization.” However, the answer is NOT your local EMA director or your particular organization’s head. Instead, it is **Dillon Matthews at TEMA whose name should be listed as your “Head of Organization”** (see below). You will see within the language on the [NETC Application Instructions Page](#) it states: ...applicants for the above EMI courses must use the appropriate State Training Officer (STO) as “Head of Organization.” When you apply, after completing the “Student Acknowledgement Statement” press "Continue," then complete the pop-up window asking for the "Head of Organization Information" information as follows:

**THE FOLLOWING NEW CONTACT INFORMATION APPLIES ONLY TO TENNESSEE CERT PROGRAMS:**

* Head of Organization Name: Dillon Matthews
* Head of Organization Title: State Training Officer
* Head of Organization Email: Dillon.Matthews@tn.gov
* Confirm Head of Organization Email: Dillon.Matthews@tn.gov

After completing your application, FEMA will forward it to Dillon Matthews at TEMA for approval. Volunteer Tennessee can help you with the application. **And PRIOR to applying for the CERT Program Manager or CERT Train-the-Trainer courses**, please contact me, [Don.Sowers@tn.gov](mailto:Don.Sowers@tn.gov) cell 818-519-6881, as the manager of Disaster Volunteer Services and acting State CERT coordinator at Volunteer Tennessee, he will facilitate the necessary application approvals. For questions or accommodation requests, contact the FEMA NDEMU Mission Support Branch: [fema-ms-branch@fema.dhs.gov](mailto:fema-ms-branch@fema.dhs.gov).

### ❖ Presenting CERT Basic Courses

The [National CERT Association \(NCA\)](#) is working with FEMA, state, territory, and tribal CERT Coordinators to collect and preserve a variety of CERT resources. The [NCA Resource Library \(Public facing page\)](#) has some links to CERT Basic Training Materials (Participant Manuals, Instructor Guides, PowerPoint Slides). And there is an NCA members only internal Resource Library accessible via the Members Area by logging into your account on the website. If you are not already a member, please consider [joining the NCA](#). The [NCA Resource Library](#) includes links to the documents and PPTs you will need to teach the CERT Basic training course. Then before a CERT Basic course begins, students should be sent the most recent *CERT Basic Training Participant (Student) Manual (available in multiple languages)*. If you plan to teach any of the optional CERT Hazard Annexes, send your participants the [CERT Hazard Annexes Participant \(Student\) Manual](#). **CERT Basic, Campus CERT, and Teen CERT all use the CERT Basic Manuals and PowerPoints. The CERT Basic Training Course requires a Minimum of 18 hours of training, including 12-hours of classroom education (or the Hybrid CERT course) and a 6-hour in-person review of the online material and a Skills Session.**

### ❖ CERT Basic Course Units – Content Overview

The Community Emergency Response Team training helps people to be better prepared to respond to emergency situations in their homes, workplaces, and communities. The **in-person CERT course** is usually delivered locally with a 20-hour curriculum, with 12-14 hours in class and 6-8 hours of in-person drills and exercise. It was developed by the Los Angeles Fire Department, FEMA, and DHS and is designed to provide individuals with basic emergency response skills, particularly those that would be of value in the initial hours, or days, after a disaster when first responder resources may be overwhelmed and unavailable. CERT Basic Course Units or Hybrid CERT Modules are typically taught in the following order, though you may vary the schedule.

- **1 - Disaster Preparedness:** This module describes the types of hazards most likely to affect our community and region, introduces the functions of CERT, defines CERT roles in immediate disaster response, and encourages steps to prepare for disasters. Topics include Community Preparedness - Roles and Responsibilities - Hazards and their Potential Impact - Home and Workplace Preparedness - Reducing the Impact of Hazards through Mitigation.
- **2 - CERT Team Organization:** Learn ways to protect rescuers; and create and execute a safe and effective response plan. Topics include CERT Organization - CERT Mobilization – Documentation.
- **3 - Disaster Medical Operations – Part I:** Participants learn how to select and set up a victim treatment area; apply techniques for opening airways, controlling bleeding, and treating shock. Topics include Treating Life-Threatening Conditions - Basic First Aid Care.
- **4 - Disaster Medical Operations – Part II:** Topics include Mass Casualty Incidents - Functions of Disaster Medical Operations - Establishing Medical Treatment Areas - Head-to-Toe Assessments - Public Health Considerations.
- **5 - Disaster Psychology:** Recognize and prepare for the psychological effects of trauma in an emergency. Disaster Reactions - Self-Care - Team Well-Being - Survivors’ Emotional Responses.
- **6 - Fire Safety and Utility Controls:** This module outlines how to identify and reduce potential fire hazards in homes and workplaces; work as a two-person team to apply basic fire suppression strategies and use an extinguisher on a small fire. Topics include Fire Size-up Considerations - Firefighting Resources - Fire Suppression Safety - Fire and Utility Hazards - Hazardous Materials.
- **7 - Light Search and Rescue Operations:** Students identify planning and size-up requirements for potential search and rescue situations; learn when it is safe to enter a structure, describe the most common techniques for searching a structure; use safe techniques for debris removal and victim extrication. Topics include Safety During Search and Rescue Operations - Conducting Interior and Exterior Search Operations - Conducting Rescue Operations.
- **8 - CERT and Terrorism:** Covers awareness of potential dangers and describes terrorist groups and threats. Topics: Terrorist Goals and Tactics, Preparing Your Community, Active Shooter Situations, Until Help Arrives, HAZMAT and CBRNE.
- **Optional Hazard Annexes:** The following are optional topics for the CERT Basic Course or later training sessions: Avalanches, Earthquakes, Extreme Heat, Hurricanes, Fires, Floods, Nuclear Emergencies, Thunderstorms, Tornadoes, Volcanos, and Winter Storms.
- **Course Review, Skills Session, and Disaster Simulation:** At the end of the course, conduct comprehensive drills or a simulated disaster exercise that ties together all CERT training modules with a practical application. Emphasize effective response, team organization, and the Incident Command System (ICS). Instructions for the disaster simulation in the CERT Basic Course Participant Manual. Segments include Course Review - Final Exam - Disaster Simulation Exercise - Critique and Summary - Graduation and presentation of CERT Basic Course certificates. The disaster exercise skills include Scene Size-Up, Extinguishing Fires, Treating Survivors, and Leveraging & Cribbing, etc. Once CERT Basic classes and skills sessions wrap up, the local program can simply present participants with a course graduation certificate. There is no other certification or registration requirement at the state or FEMA levels for individuals.

## ❖ CERT Basic Course - Materials & Links

- [Ready.gov Citizen Responder - CERT Basic Manuals PDFs](#)
- [FEMA - CERT Basic Training Overview & Materials \(In multiple languages\)](#)
- [FEMA - Videos about the CERT Basic 9 core basic training units.](#)
- [CERT Basic - PowerPoint Slides](#) [English](#) | [Spanish](#) You may want to customize the CERT PPT slides by adding your organization's logo, relevant local information, and photos.
- [LAFD - CERT Manuals and Training Materials](#) English, Spanish, Low Vision, Screen Reader PPTS)
- [Lamorinda, CA - Sample CERT Basic Training PPTs, sample Handouts, and Training Materials](#)
- [FEMA - Additional CERT Resources - Links to CERT Guides, Manuals, and PowerPoints](#)
- [CERT Flipbooks – CALISTOS CERT-Basic-Training-Participant-Manual](#)
- [CERT Flipbooks – CALISTOS CERT-Basic-Training-Participant-Manual \(Spanish\)](#)
- CERT Basic Course – Optional Instruction - Hazard Annexes
- [FEMA - CERT Hazard Annexes - PowerPoint Slides](#) [English](#) | [Spanish](#)
- CAMPUS CERT Course Info (Higher Ed. Institutions)
- [FEMA - Community Emergency Response Teams \(CERTs\) on Campus](#)
- [Campus CERT Starter Guide](#) Campus CERT programs are for college or university campuses.
- [NCA - CERT T-T-T Campus and Workplace Programs webinar](#)
- [University of California San Francisco Emergency Response Mgmt. Plan Annex CERT](#)
- [California University Emergency Response Teams in Training](#)
- TEEN CERT Course Info (High Schools, Faith-Based Orgs., Scouts, Civil Air Patrol, Young Marines)
- [Teen CERT Guide Launching and Maintaining the Training pdf](#)
- [Teen CERT Resources](#) *Campus and Teen CERT also use the CERT Basic Manuals and PPTs.*
- [FEMA Article - Partnership with Scouts Promotes Preparedness - April 4, 2023](#) This Scout Council is also using FEMA's [Student Tools for Emergency Planning \(STEP\)](#) curriculum and Teen CERT to teach preparedness to younger Scouts and to students in schools.
- [MOU between the Volunteer West Virginia and local Teen CERT programs](#)
- [NCA - CERT TTT - Bringing Teen CERT to Your Community - Webinar](#) (01:28:22)
- [New Jersey - Teen CERT - Frequently Asked Questions](#)
- [New Jersey - Sample Teen CERT Brochure pdf](#) - [New Jersey - Sample Teen CERT Poster pdf](#)
- [Ready.Gov – Teen CERT](#)
- [Scout Preparedness Program Using Teen CERT](#)
- [Teen CERT- Pasadena, TX \(3:40 min.\)](#)
- [Teen CERT Sandy City Hall - 2013 \(11:15 min.\)](#)
- [U.S. Dept. of Education - Readiness and Emer. Mgmt. for Schools - Teen & Campus CERT](#)
- [REMS - Teen CERT: Enhancing School Emergency Management - Webinar](#) (1 hour)
- [Youth.gov – Disaster Preparedness and Response](#) “By involving youth in disaster preparedness and recovery efforts, (schools, agencies and organizations) can help to not only increase youths’ awareness of particular hazards but can also enhance the chance that they openly discuss how to adequately protect their families and loved ones...”
- WORKPLACE CERT - [Workplace CERT](#) , [Video: Workplace CERT - Disaster Drill at the Port of Los Angeles \(2:27 min.\)](#), and [Video: Workplace CERT - Resilient Business ... \(4:04 min.\)](#)

## ❖ Optional Hybrid Virtual CERT Basic Training & In-Person Skills Sessions



[Hybrid CERT Basic - Courtesy University of Utah - School of Medicine](#) This online CERT Basic course educates our neighbors and co-workers about disaster preparedness and trains them in basic disaster response skills, such as fire safety, light search and rescue, team organization, and disaster medical operations. Questions? For more info please see: [www.OnlineCERT.org](http://www.OnlineCERT.org)

The [OnlineCERT.org](http://www.OnlineCERT.org) webpages describes this alternative approach to presenting the traditional in-person CERT Basic training classes for CERT programs in Tennessee, which is on the list of [Hybrid CERT Approved States](#). It makes the usual 12-hour classroom portion of the CERT course available as an online course delivery method so community members can complete the classroom portion online at their own pace.

And it is suggested you set a date when participants must submit certificates showing proof of their completed modules to you prior to the Skills Session. For more info please see the following links to the [Hybrid 3.0 CERT Course Catalog](#), [Hybrid CERT Training Webinar - How to implement the Hybrid CERT Training and General Overview](#), [Program Manager Sign-up Instructions and Samples pdf](#), and the [CERT Program Manager and Instructor Toolkit](#) which tracks student progress and forwards course invites within the Hybrid CERT learning management system, and a [Hybrid CERT Task book Checklist](#).

The new online hybrid CERT course should be a tremendous cost and time saver for CERT programs. To sign up for Hybrid CERT access make sure you have first added your approved CERT program to the [FEMA CERT Registry](#). Then go to [New Organization Request to Become a Hybrid CERT Provider](#). After being approved, here is [login](#) information. Then after students complete the online portion of the course, the CERT program must also hold an in-person [CERT Skills Sessions](#) for students to graduate and receive a completion certificate from your program. (**Note: Volunteer Tennessee has a sample CERT course graduation certificate available for local CERT programs**).

Here are a [Checklist for the Practical Skills Portion](#), [CERT Hands on/skills demo video \(1:44\)](#), [Hybrid CERT Basic - Skills Training session videos](#), and their Hybrid CERT Management page for CERT program managers tracks student progress, forwards course invites within the Hybrid CERT learning management system. See [Hybrid CERT Toolkit](#). [Instructor Guidance - CERT Skills Checklist](#) [Participant CERT Skills Checklist](#) [Sample Knox County Hybrid CERT Training flyer](#)

Program Managers and Instructors - Videos & Checklist on administering the CERT Skills Session:

- [Hybrid CERT Training Webinar 1 - How to implement the Hybrid CERT Training and General Overview - Suu-Va Tai \(1:57:23\)](#)
- [Hybrid CERT Training Webinar 2 - In-person skills training and disaster simulation guidance - Suu-Va Tai \(1:57:16\)](#)
- [Hybrid CERT Training Webinar 3 - Suu-Va Tai \(1:46:57\)](#)
- [Printable Skills Checklist pdf](#)

For a backup link to the CERT Basic Training Participant Manual, visit

<https://drive.google.com/file/d/1KMZkaAQtgKwoPO8fejZjXrsE4qenZA7K/view?usp=sharing>

You can take this Hybrid CERT course on desktop PC/Mac, mobile, and tablet devices at your own pace and convenience. This online course satisfies the lecture portion of CERT Basic Training. To receive a certificate of full course completion, students must also complete the hands-on, practical skills portion of the training. Please contact [onlinecert@utah.edu](mailto:onlinecert@utah.edu) with additional questions or if you are experiencing technical issues with the course.

During CERT courses, you should always conduct the Skills Sessions in a safe setting. Have sufficient safety officers present. Verify all students wear their protective equipment and PPE as required by the skill. And use the buddy system as appropriate. Make accommodation only if the activity can still be done safely. Occasionally, there will be CERT students who wish to take in-person CERT training from another agency or organization. This usually happens when a student may have missed a particular CERT course module, or the CERT Basic course is not currently offered where they live, or work and they wish to train at another location. It also occurs when another CERT program is offering a training topic or exercise not offered at their home CERT program location.

Upon approval of both CERT program managers, CERT programs may allow participants from other programs to participate in these activities. Also, we encourage all EMAs, CERT programs, ARES, VOADS, and others who may work together in a future disaster to regularly train and exercise together.

The hybrid CERT program recommends all new programs please watch the [Hybrid CERT Administrative Training](#) and submit a request for program manager access (to manage student enrollments and progress). The toolkit below includes all agendas, flyers, and skills checklist you will need to implement the skills portion of the program (12 hours online/16 hours skills). Please let me know if you have any questions.

### [Hybrid CERT Toolkit](#)

- Hybrid CERT Program Guide: [English](#), [Spanish](#), and Mandarin
- Online CERT "Tool Kit": [Agendas, Flyers, Skills Checklists, and Certificates](#)
- Hybrid CERT [Best Management Practices \(Skills\)](#)

### New Hybrid CERT Online Course Program Management Options:

- Program Manager access to manage students: [Approval request link](#) has option for students to select your CERT organization
- Search for students' progress, and
- Forward students course invites from the online course
- See: Program Manager access: [PM Admin Directions](#)

### Hybrid CERT Administrative Training (for new programs)

- [Hybrid CERT Administrative Training](#) (8 hours total)

### Students - [Registration link for Hybrid CERT](#)

Note: After you complete the first Online CERT module and earn your first completion credit, you will receive an email to create your Merit account. This initial merit award triggers the generation of the Merit account which tracks your completion certificates.

CERT Organizations can [Manage Hybrid CERT Online Learners](#)

New CERT Organization Registration Instructions - [Quick Start Guide PDF](#)

If you already have a CERT Organization login, please log in to the [Admin Panel](#)

Here is the link to all [Hybrid CERT documents](#) available for download and use:

<https://bit.ly/hybridcerttoolkit>

## ❖ Hybrid CERT Basic Training - Sample Skills Sessions Videos



Below are several links to videos and webpages with suggested activities for conducting the in-person Skills training and a list of several CERT Skills Session YouTube Videos

- [San Mateo, CA Fire CERT Basic Class Information & Terrific Training links for each Unit](#)
- [CERT Basic Training Disaster Simulation Suggestions \(Facebook Posts\)](#)
- [Sample Agenda for Practical Skills Portion of a CERT Course – Google docx](#)
- [Hybrid CERT Training Webinar 1 - Implementing Hybrid CERT Training Overview](#) (1:57:23)
- [A brief video by ReadyOC of a CERT Skills Session.](#)
- [Montana HOSA - Five CERT Skills Videos on YouTube](#)
- [How to Approach a patient](#) (2:31)
- [Evaluate Circulation](#) (3:24)
- [Maintain an Airway](#) (3:21)
- [Open an Airway Jaw Thrust](#) (5:06)
- [Apply direct pressure to control excessive bleeding](#) (4:31)
- [Apply a tourniquet to control excessive bleeding](#) (5:47)
- [Perform a mental status evaluation](#) (2:19)
- [Apply a sling and swath for the arm](#) (3:30)
- [Perform splinting](#) (12:47)
- [Dress and Bandage a Wound](#) (10:28)
- [How to Assist When Administering an Epi Pen](#) (0:56)
- [Evaluate breathing](#) (2:05)
- [Head-to-toe assessment](#) (6:55)
- [Inline stabilization demonstration](#) (4:37)
- [Proper body position for lifting and the one-person arm carry](#) (1:37)
- [Pack strap carry](#) (2:45)
- [Two-person carry](#) (3:13)
- [Chair carry](#) (2:44)
- [Log roll and blanket carry and blanket drag](#) (6:07)
- [ABCD quadrant method](#) (5:07)
- [Debris removal](#) (2:47)

## ❖ CERT Exercises

Reminder, CERT programs must hold an exercise at least once a year for retained volunteers to maintain your FEMA CERT program registration.



CERT Annual Exercises are the best way to prepare CERT teams to respond effectively to an emergency. Exercises and drills should be designed to engage team members and have them work together in response to a hypothetical incident. [Exercises](#) enhance knowledge of plans, assess skills, allow CERTs to improve their own performance, and address local training priorities. **Consider using the videos and training links found below and throughout this guide for ongoing CERT volunteer Training Sessions.**

- [CERT Tabletop Exercise - Earthquake - pdf](#)
- [CERT Jeopardy Game](#)
- [Dallas CERT Training Drill \(6:18\)](#)
- [Disasterville for CERT](#)
- [Disasterville PowerPoint Slides](#)   [Disasterville Toolkit](#)
- [Developing and Facilitating CERT Tabletop Exercises](#)
- [East Lake, FL - CERT - Lost child exercise \(9:58\)](#)
- [FEMA-EMI IS-120.C: An Introduction to Exercises](#)
- [FEMA - Exercise Best Practice Guides](#)
- [FEMA - Tabletop Exercise Design and Design and Delivery](#)
- [How Do You Keep CERT Volunteers Engaged?](#)
- [HRCC - Thoughts on the CERT Training](#)
- [Kansas City, MO - CERT Rodeo - How to do MOULAGE](#)
- [Long Beach, CA - CERT Drill video \(8:39\)](#)
- [Moulage - Several photos of Volunteer "Survivors" in make-up](#)
- [Ready.gov - Exercises](#)
- [REMS - Triage Tabletop Activity \(Word doc\)](#)
- [San Bernardino Co. CA Fire OES - Exercise Overview \(2:50\)](#)
- [Training and Exercise Development - pdf](#)

HAM Radio – CERT program managers should consider partnering with local [Amateur Radio Emergency Service \(ARES\)](#) and [Radio Amateur Civil Emergency Service \(RACES\)](#) groups for training and exercises. These licensed and trained HAM radio operators volunteer to provide emergency communications support to local, state, and federal agencies during disaster situations. And they can provide training, equipment, licensing, and information about ham radio.



CERT programs often train and exercise with ARES and RACES volunteers. **Consider recommending your CERT volunteers obtain a [ham radio license](#). This will enable them to [Keep Lines of Communication Open](#) even when the internet, cell phones, and critical infrastructure are down!**

## ❖ CERT Training/Response Cargo Trailer & Equipment Options

\* No endorsement should be implied for any commercial products or services listed in this CERT Resource Guide by the State of Tennessee or Volunteer Tennessee.

### Potential CERT Cargo Trailer Specs:

Typical CERT enclosed cargo trailers have a white exterior color with a flat nose, width 6' or 7', length of 12' or 14', interior height 7', with no more than a 10,000 lb. GVWR load capacity, 2 5/16" adjustable coupler, tandem axel, hand crank jack, scissor or bottle stabilizer jacks for trailer corners, 15" radial tires, spare tire, tire pump, 4-wheel brakes, 8' folding beaver tail rear ramp instead of swing doors is preferable for loading, tandem wheels, heavy duty drop leg jack (with large foot pad), safety chains, breakaway kit with battery and in-line charger, 36", 42", or 48" x 78" side door with a flush, latch or dead bolt locks, adjacent grab bar handle, spare tire, lug wrench, wheel chocks, 2-levels of E-track mounting system to secure loads recessed on all three walls (at 12"-16" and 44"-48" above the floor), 4-D-rings 6,000# rated recessed swivels in 4-corners of floor, minimum of 3/4" exterior/water resistant plywood flooring and ramp, rubber vinyl anti-skid coin or treat Plate floor surface covering for ramp and floor, (optional trailer floor undercoating), side wall and two RV style roof vents (14" x 14"), a section of opaque skylight in roof (like the UPS delivery trucks), melamine on the interior of the doors (can be used as dry-erase boards), a dedicated fire extinguisher (stays with trailer), and large commercial first-aid kit (both mounted just inside the side door), trailer graphics - large [CERT graphics - logos](#) and CERT program sponsor's name on the sides, and smaller CERT logos on the front and rear of the trailer.

### CERT Trailer Electrical Package (12-volt system):

LED road lights on all corners, two RV type ceiling vents may require 12-volt wiring with optional fans, L.E.D. exterior marker, tail lights, and dome lights, solar panels, inverter, 12-volt batteries, 12-volt exterior scene lights (flush mounted L.E.D.s with 2 on each side and one on the front wall, 30 amp electrical package, and on my personal wish-list: roof mounted solar panel with a battery charging charge system.

### Potential Enclosed Cargo Trailer Suppliers \*

- [ProPac](#)
- [Deployed Logix](#)
- [Homesteader](#)
- [Tenn Trailers](#)
- [USA](#)
- [Wells Cargo](#)



### Trailer Towing - **Important!**



Before allowing anyone to tow a trailer, please consider is the person planning to tow a CERT trailer authorized, trained & qualified to tow a trailer, have a valid driver license, and insurance specifically naming the sponsoring organization as an additional insured. And be sure to check with your organization's Risk Management/Legal department and insurance carrier to determine if volunteers would be covered if they tow your trailer.

**See the Liability and Volunteer Insurance sections on pages 15-18 in this CERT Guide.**

**Always consider taking pictures and marking all equipment owned by your organization well before CERT exercises, drills, and activations.** And maintain a current CERT trailer equipment and supplies inventory. You may want to mount a copy on an interior wall of the trailer. Ask other CERT programs or teams who may plan to use the trailer to please replace any depleted or broken equipment.

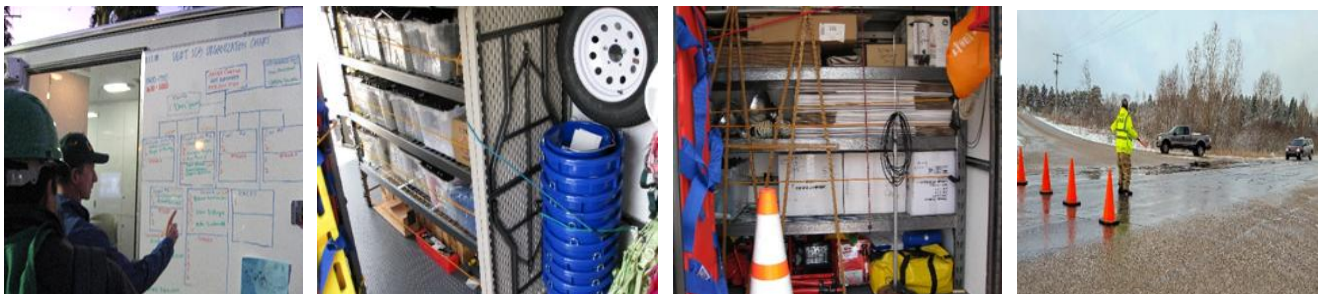


### **Miscellaneous CERT Trailer Equipment & Supplies:**

Three portable wire shelving units 4-foot wide with casters, tough plastic bins with lids for shelves, hand trucks/dolly carts, ratcheting tie-down straps with hooks, assorted bungee cords, small power generator, Empty gas can, funnel (**NEVER store gasoline or propane in the trailer**), extension cords, free standing work lights, inflatable ballon light-towers, push broom, dust pan, trash bins, construction garbage bags, shovels, rakes, brooms, dust pan, pry bars, tool kit: (wrench, pliers, hammer, screw drivers, nails/screws, pliers, bolt cutter, hacksaw, hatchet, leather gloves, tape, rope, paracord, folding knife, heavy duty staple gun, extra staples, and plenty of duct tape), flashlights, batteries, , orange traffic cones, yellow caution tape, clipboards, paper/notebooks, pens, white boards, easels, dry erase markers, lumber crayons, canopies, tables (six-foot folding), folding chairs, tarps, plastic sheeting, CERT feather flag kits with base, banners, green CERT table cover, plastic sheeting, porta-potty, pop-up tent, folding ladder, empty 5-gallon water jugs, ice chest, buckets, paper towels, cups, plates, utensils, manual can opener, napkins. DO NOT store perishable food items in the trailer and remember to **always have a first aid kit available** for all drills and exercises.

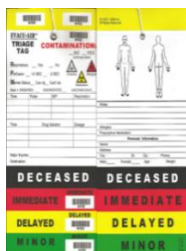
### **Optional CERT Response Equipment:**

In a disaster, a CERT training cargo trailer could be used by trained volunteers in response roles. Consider whether to stock a cache, located in an area separate area from the training supplies, of additional PPE and response gear such as: CERT backpacks, CERT helmets, CERT caps, Kelly green reflective CERT vests, leather & nitrile gloves, safety goggles, N-95 masks, ponchos, emergency blankets, chemical A-B-C fire extinguishers, traffic cones, tools, rolling white dry-erase boards, and/or white melamine panels on the interior of the trailer doors (photo below). [Sample CERT Trailer List](#), [Sample CERT Trailer Forms Checklist](#).



## ❖ CERT Basic Course Training Equipment

**Disaster Medical Operations** - Moulage to simulate injuries, 4x4 gauze pads, bandages, abdominal pads, triangular bandages, tourniquets, slings, SAM splints or cardboard splinting material, nitrile gloves, shaving cream, medical tape, scissors/EMT shears, PPE, triage tags, triage tape, backboards, backboards or folding cloth stretchers, neck collars, emergency cloth or mylar blankets, and triage tarps, etc.



**Fire Safety and Utility Controls** - Use a fire pan (preferably a propane system with trained fire safety officers present), (e.g., Dräger Fire Extinguisher Trainer-The TUTOR, Lion Propane System, Passfire™ Burn Pan Training, or Fire Trainer / Flame Generator Aeros 2)\*, several fire extinguishers (usually 2-3 trainees per eight or ten lb. extinguisher), remote ignition or road flares and a long pole, and electrical or duct tape to hold flare on pole.



**Light Search and Rescue Operations** - Gas Meter, Electrical Panel, and Cribbing Materials which are essential in many extrication operations, have a mannequin/dummy, two pry bars (or some long 2"x4"s), numerous pre-cut pieces of wood for box cribbing e.g., twenty 2"x4"x24," and twenty 4"x4"x24," as well as cribbing wedges (you could cut several 4"x4"x24" pieces of wood in half on a diagonal). And consider purchasing milk crates to store the wood blocking and shims, and a large flat object to leverage (e.g., heavy table, dumpster, etc.). Also, consider using an electrical circuit breaker training panel, gas meter mock-up, wrench, 4-in-one tools, and a megaphone/bullhorn. See: [San Mateo, CA Fire – An excellent CERT Reference Sheet PDF on Cribbing.](#)



### Skills Sessions & Drills - Personal Protective Equipment:



For the practical Skills Session or Drill in a CERT class, PPE SHOULD BE REQUIRED FOR EACH PARTICIPANT, including a helmet ([consider attaching a light](#)), work gloves, safety goggles, and a mask. Additional equipment and supplies such as CERT reflective safety vests, fire extinguishers, etc., will be needed for teaching the other units in the CERT Basic training course.

## ❖ CERT Course Certificates - Individual Gear & Equipment - Logos/Patches \*

\* *No endorsements should be implied for any commercial products or services listed in this CERT Resource Guide.*

### CERT Training Completion Certificates



After completion of the CERT Basic training course, **sponsoring CERT programs must provide a training certificate to their graduates. Volunteer Tennessee can provide you with a sample CERT certificate template in Word format (see image).** Feel free to edit the template to add different logos or seals, insert your signature blocks, and change the student names. For convenience, each time you change a student name on the master Word document, consider saving it as a separate PDF to

make it easy to retain your records or email a copy. Also, a PDF is better quality when printing certificates. There are no rules for CERT certificate formatting. So, you can use any certificate format you wish to make up for your program. However, just be sure to include the wording “CERT Basic Course” and the CERT national logo on it so other CERT programs could recognize it was presented after completion of the CERT Basic course.

**Additional Individual CERT Gear:** CERT programs have the option to provide some CERT equipment, such as a CERT vest and CERT helmet, to their CERT Basic course graduates. Though, most CERT programs only provide a CERT vest and helmet to just their “train & retain” volunteers. Alternatively, volunteers can choose to purchase any additional personal CERT clothing and gear on their own.



**Remember, personal safety is paramount. Always conduct a Size-up before any action. CERTs should never attempt any action unless they were previously trained to perform those activities or if it puts them at risk.** At a minimum, CERTs should always work with a buddy and wear the necessary equipment and PPE (e.g., N-95 mask, leather work gloves and/or medical gloves, protective eyewear, hard hat, long pants, long-sleeved shirt, sturdy shoes/boots, CERT reflective vest, bag or backpack, tools, forms, first aid supplies, and water/snacks).

**Logos/Patches/Pins:** FEMA manages the CERT program, and the Department of Homeland Security holds a trademark on CERT marks, any group that wants to identify or respond as a “CERT” team must follow the requirements set by FEMA under the [Department of Homeland Security Trademark Use Agreement for CERT Marks/Logos](#). FEMA [registered CERT programs](#) do NOT need to request permission to customize the CERT logo to meet local needs. The use of the logo will strengthen the CERT brand and increase public awareness. You may also add local landmarks or a CERT program sponsor name to the skyline area of the official CERT logo design to customize your patches, stationary, etc. [CERT Logo Usage Guidelines](#).



[CERT Programs Registered with FEMA](#) do not need to request permission under the Department of Homeland Security Trademark Use Agreement for CERT Marks. However, companies who wish to market products using the CERT logo should review <https://www.ready.gov/faq/cert-logo>.

**The CERT logo shall not be used in any manner which implies the endorsement of any person, product, program, service, or on any commercial products. If you have a link to a CERT supplier not listed below, please let us know. [don.sowers@tn.gov](mailto:don.sowers@tn.gov) Thanks.**

## ❖ CERT Vendors & Suppliers\*

\* *No endorsements should be implied for any commercial products or services listed in this CERT Resource Guide.*

- [CDC - Sequence for Putting on Personal Protective Equipment \(PPE\).](#)
- [CERT Vehicle License Plate Frame | ProPac USA](#)
- [CERT and Custom License Plate Toppers email: Chris Greenwood at \[chris@fireplatesnmore.com\]\(mailto:chris@fireplatesnmore.com\)](#)
- [CERT Store](#) (All Profits Benefit the Los Angeles CERT Program)
- [City of Los Angeles - CERT Red Rock Rattlers - Equipment Lists and Suppliers](#)
- [Community Disaster Preparedness Foundation Radio Recommendations \(2022\) Includes Equipment Lists, Communications Plans, FRS/GMRS/HAM Radio, and Zello Information](#)
- [Combat Swag – Custom CERT Patches](#)
- [Conterra Four Color TRIAGE Tape - Black, Yellow, Green, RED - \(Amazon link\)](#)
- [Earthquake Management Products – CERT Equipment](#)
- [EmergencyKits.com – CERT Equipment & Supplies](#)
- [Fire Supply Depot - CERT Kits & Supplies](#)
- [First Aid Market - CERT logo patch and caps](#)
- [First Aid Product - C.E.R.T. Products & Gear](#)
- [First Class Responder - CERT Equipment & Supplies](#)
- [First Class Responder - CERT Logo Shirts and Decals](#)
- [Google – Samples Customized CERT Logo Graphics.](#)
- [LAFD - What Should Be in Your Emergency "Go Bag"](#)
- [Midland FRS & GMRS, and NOAA Weather Radios and Base Stations at Discount](#) Contact Bruce Jones, Meteorologist/National Spokesperson [bjones@midlandusa.com](mailto:bjones@midlandusa.com) 816-462-0497 regarding 40% off retail price for EMA's, CERT programs, VOADS, schools, & churches.
- [PIP Traverse Vented Industrial Climbing Helmet Visor with a Clear Lens](#) Thank you Randy Bolin, Smith County, TN - ARES CERT.
- [Prepare Smart](#)
- [ProPac - CERT and MRC Supplies](#)
- [Quantum Packs.com](#)
- [Sample CERT Bag - YouTube](#) and [Bay CERT deployment bag contents](#) - CERT backpacks videos.
- [Santa Cruz Co, CERT - Backpack Checklist \(pdf\)](#)
- [Santa Cruz Co, CERT - Car Emergency Checklist \(pdf\)](#)
- [SOS Survival Products – CERT Equipment and Supplies](#)
- [Sunset Survival & First Aid - CERT Team Gear](#)
- [TEMA - Emergency Kit Recommendations](#)

## ❖ Upcoming CERT Training Opportunities and Events

### JUST ANNOUNCED!

## 2026 National CERT Association Conference and Training



The [National CERT Association \(NCA\)](#) will be hosting the [2026 NCA CERT Conference](#) next year from **August 24-29, 2026**. The Hyatt Regency Irvine hotel is located directly across from John Wayne Airport in Orange County, California which is the home of Disneyland, Knott's Berry Farm, the Spectrum in Irvine, Newport Beach, and Huntington Beach. Please join your fellow CERT volunteers and leadership from throughout Tennessee and across the country for some fabulous courses and advanced CERT related training opportunities.

And here is a link to the [2026 NCA Conference Sneak Peek Video](#).

Conference courses may include: CERT Train-the Trainer (FEMA-NDEMU), CERT Program Manager



(FEMA-NDEMU), NCA CERT **Master Instructor**, NCA and State **Resources** for Local CERT Programs, **Hybrid CERT Updates**, **Stop the Bleed**, **Psychological First Aid**, **HAM CRAM**, **Weather 101/Spotter Training**, **Animals in Disaster**, **Teen CERT**, Starting an **Advanced CERT Program**, CERT Utilizing **Resource Typing** and Position Task Books, **Traffic and Pedestrian Control**, Starting a **Firefighter Rehab Unit**, CERT and the **Missing Person Incident**, and many more.

**Theme** - The NCA will be celebrating the 40th anniversary of CERT. "Let's honor our past, elevate our present, and shape the future."

**Location** - The conference will take place at the **Hyatt Regency Irvine hotel is located at 17900 Jamboree Rd, Irvine, CA 92614** directly across from John Wayne Airport. Special room rates will be available for conference attendees.

**Registration** - The Registration link for this conference will be posted in the coming months.

**About the National CERT Association** - The [NCA](#) was created by CERT Leaders across the US in partnership with FEMA. Officially established on September 12, 2019. The [NCA](#) is a non-profit organization established to support communication and resource sharing across the CERT community. In 2024, NCA joined with [Fire Services Training Institute \(FSTI\)](#). The NCA has excellent resources and will soon have NCA a resource library for members with links to training materials, webinars, and other CERT related resources. Learn more about the National CERT Association at <https://nationalcert.org/>. Please consider [joining the NCA](#).



## Upcoming FEMA Courses

**PLEASE SHARE THESE 2026 TRAINING OPPORTUNITIES WIDELY WITH YOUR CERT MEMBERS.**

For a list of the local Tennessee CERT Programs, please see our [Volunteer Tennessee CERT webpage](#).

### 2026 FEMA In-Person and Virtual CERT Courses:

#### UPCOMING FEMA / NDEMU / EMI - CERT-RELATED TRAINING OPPORTUNITIES:

The FEMA - National Disaster and Emergency Management University (NDEMU) has spots available in several courses that may interest your CERT staff and volunteers. For these and other course offerings, see <https://training.fema.gov/emicourses/schedules.aspx> And consider signing up to receive new [NDEMU Training Opportunities and Bulletins](#).

#### EMI Course Schedule

Course	Go	Start	End	City	State	Curriculum	POC
427		mm/dd/yyyy	mm/dd/yyyy	Cities	States	Curricl	POC
E0427: CERT Program Manager		4/2/2026	4/3/2026	Emmitsburg	MD	Mission Support	<a href="#">Cortes, Lucia</a> 202-975-3158
K0427: CERT Program Manager (01:00 PM - 05:00 PM EST)		3/3/2026	3/6/2026			Mission Support	<a href="#">Cortes, Lucia</a> 202-975-3158
K0427: CERT Program Manager (T, W, R, F 01:00 PM - 05:00 PM EST)		8/25/2026	8/28/2026			Mission Support	<a href="#">Mickles, Stacey</a> 202-704-4218

#### EMI Course Schedule

Course	Go	Start	End	City	State	Curriculum	POC
428		mm/dd/yyyy	mm/dd/yyyy	Cities	States	Curricl	POC
E0428: CERT Train-the-Trainer		3/30/2026	4/1/2026	Emmitsburg	MD	Mission Support	<a href="#">Cortes, Lucia</a> 202-975-3158
K0428: CERT Train-the-Trainer (01:00 PM - 05:00 PM EST)		2/17/2026	2/26/2026			Mission Support	<a href="#">Cortes, Lucia</a> 202-975-3158
K0428: CERT Train-the-Trainer (T, W, R 01:00 PM - 05:00 PM EST)		6/2/2026	6/11/2026			Mission Support	<a href="#">Cortes, Lucia</a> 202-975-3158

#### **In Person Offerings:**

Course participants will be equipped to prepare a program to effectively manage unaffiliated volunteers, unsolicited donations of goods, and offers of undesignated cash. The course content and activities also serve as a plan template, thereby increasing continuity among states and their voluntary agency partners. This 3.5-day instructor-led course is being held on the National Emergency Training Center (NETC) campus in Emmitsburg, Maryland. Students who are affiliated (paid or volunteer) with a recognized non-profit, or a State, Local, Tribe, or Territory Agency are

eligible for reimbursement of flights and will be provided lodging. Students are responsible for the cost of their meal ticket. When applying for the course, applicants MUST submit their completion certificate for [IS-13: NDEMU Conduct and Behavior](#).

The FEMA – NDEMU - Emergency Management Institute (EMI) has announced they will host a **FREE in-person CERT training session at the National Disaster & Emergency Management University (NDEMU) Campus in one week in Emmitsburg, Maryland. This On-Campus Delivery** will be presented over 5 consecutive days, 8 am to 5 pm (EST). It combines the CERT Train-the-Trainer and CERT Program Manager courses.

**In-Person - E0428: CERT Train-the-Trainer - March 30 - April 1, 2026 at EDEMU**

This "E" Resident course is being held at the National Emergency Training Center (NETC) campus in Emmitsburg, Maryland. Students who are affiliated (paid or volunteer) with a recognized non-profit, or a State, Local, Tribe, or Territory Agency are eligible for reimbursement of flights and will be provided lodging. Students are responsible for the cost of their meal ticket. When applying for the course, applicants MUST submit their completion certificate for IS-13; NDEMU Conduct and Behavior <https://training.fema.gov/is/courseoverview.aspx?code=IS-13&lang=en>

**Along with the In-Person - E0427: CERT Program Manager - April 2 - 3, 2026 at EDMU**

This "E" Resident course is being held at the National Emergency Training Center (NETC) campus in Emmitsburg, Maryland. Students who are affiliated (paid or volunteer) with a recognized non-profit, or a State, Local, Tribe, or Territory Agency are eligible for reimbursement of flights and will be provided lodging. Students are responsible for the cost of their meal ticket. When applying for the course, applicants MUST submit their completion certificate for IS-13; NDEMU Conduct and Behavior. <https://training.fema.gov/is/courseoverview.aspx?code=IS-13&lang=en>

During this week-long training session, EDMU will offer both the CERT Program Manager (E0427) and CERT Train-The-Trainer (E0428) courses back-to-back. All participants must take both in-person classes when attending the NETC in Maryland. When I learn of communities offering additional courses, I will send out that information.

To apply for a course, complete the [NETC Online Admissions Application](#). However, before submitting an application for a FEMA virtual or in-person CERT course, please contact [don.sowers@tn.gov](mailto:don.sowers@tn.gov) for assistance in completing your training application and to facilitate the necessary State of Tennessee approvals. For questions or accommodation requests, contact the FEMA NDEMU Mission Support Branch: [fema-ms-branch@fema.dhs.gov](mailto:fema-ms-branch@fema.dhs.gov).

**ONLINE - FEMA - Instructor-Led Offerings:**



**Online - FEMA - NDEMU - K0428: CERT Team Train-the-Trainer - February 17-26, 2026 has apparently been cancelled by FEMA.**

This 24-hour course prepares participants to deliver FEMA's Community Emergency Response Team (CERT) Basic Training course. Ideal candidates include individuals who are currently involved with their local CERT program and who are comfortable instructing groups using multiple modalities.

The purpose of the CERT T-T-T course is to produce competent instructors for the CERT Basic Training Course. A competent CERT instructor:

- Delivers the CERT Basic Training Course accurately, conveying the messages and intent of the CERT Program (e.g., safety, teamwork, place in overall community emergency operations plan).
- Assures that participants achieve the objectives of the CERT Basic Training Course.
- Delivers training effectively and at an appropriate level, this enabling participants to learn and correctly apply skills sets.
- Creates a comfortable yet managed learning environment.

The course includes classroom and hands-on activities. They welcome people of all abilities.

**Online - FEMA - NDEMU - K0427: CERT Program Manager** This 16-hour course prepares participants to establish and sustain an active local Community Emergency Response Team (CERT) program. This instructor-led course is held virtually on the Google Meet platform.

**Online - FEMA - NDEMU - K0419 - Mass Care - Emergency Assistance Shelter Field Guide Training for States and Local Communities** This 2-day virtual instructor-led course was developed by the American Red Cross and FEMA to train participants in sheltering practices and techniques. It is designed for use with its companion piece, the Shelter Field Guide and will assist learners in identifying the different roles involved in sheltering and what resources are needed for sheltering.

### **How to Register for FEMA – NDEMU – EMI Courses**

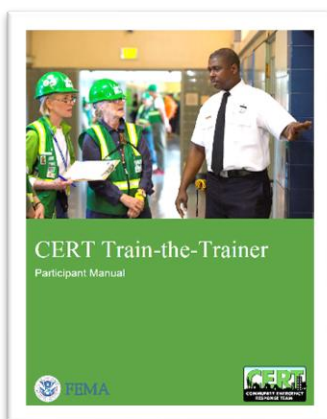
To register for FEMA NDEMU courses, visit

<https://training.fema.gov/generaladmissionsapplication/staticforms/startapplication.aspx>.

You will need your FEMA Student ID as well as any certificates for pre-requisites to upload with your application. For assistance applying for NDEMU courses or for more information on reimbursement for in-person courses held on the NETC campus, please contact

[netcadmissions@fema.dhs.gov](mailto:netcadmissions@fema.dhs.gov).

**Rosters fill quickly, so please encourage anyone who is interested in these EMI courses to enroll right away!**



A link to the CERT Program Manager Participant Manual is available in the [National CERT Association \(NCA\) Resource Library](#). But before someone takes the CERT Train-the-Trainer course, if they are not a first responder, they must first complete the prerequisite [CERT Basic training course](#). However, first responders only need to complete the online [IS-317 course](#) as a prerequisite to CERT T-T-T and CERT Program Manager courses. Though, completing the [Hybrid CERT online course](#) is highly recommended for first responders.

## Additional EMI Training Opportunities:



Here is a [link](https://training.fema.gov/ndemu/schools/emergency-management-institute/) to the FEMA – NDEMU Featured EMI Programs and Resources webpage:

<https://training.fema.gov/ndemu/schools/emergency-management-institute/>

### Emergency Management Institute Goes Social

FEMA’s Emergency Management Institute (EMI) also has social media accounts which post training opportunities and course offerings. [Twitter](#), [Facebook](#), and [LinkedIn](#).

## 2026 Connecticut - CERT Connect - FREE Webinar Series



### State of Connecticut

Department of Emergency Services & Public Protection  
Division of Emergency Management & Homeland Security



## CONNECTICUT CERT CONNECT: WEBINAR SERIES

[Connecticut CERT Connect online training](#). Thank you **Michael Davis - State CERT Coordinator - Connecticut Emergency Management and Homeland Security**, for sharing this FREE monthly webinar series which you have made available to CERT members across the country. Connecticut designed it to share best practices, innovative ideas, and practical tools that can be applied immediately at the local level. Each session features experienced presenters and real-world examples relevant to CERT programs of all sizes. Whether you are a new team or a well-established program, these webinars offer valuable insights to strengthen readiness and engagement. They encourage CERT teams to attend live when possible and to share the recordings with their members afterward. Each 2-hour program will focus on diverse topics to help strengthen community emergency preparedness.

### CT - Webinar Details:

- All webinars will take place from 7:00 PM to 9:00 PM EST.
- To access available sessions, you first need to [create an account](#).
- If you already have an account, [please login](#).
- Topics are subject to change. More information is available on the [CT Train page](#).

**Upcoming Webinars:** Below are the first three scheduled CT CERT CONNECT Webinars for 2026. This webinar series is expanding to a monthly format, alternating between 3:00 PM EST and 7:00 PM, All webinars will be recorded and posted on the [Connecticut CERT YouTube Channel](#) for those unable to attend live.

### CrisisTrack for Mitigation, Response, and Recovery

This session will provide an overview of how the CrisisTrack platform can support emergency operations, improve documentation, and enhance CERT and emergency management capabilities across all phases of an incident.

**CT CERT Connect Webinar Series session, CrisisTrack: Overview and Utilization, on Tuesday, February 17, 2026, from 7:00 PM – 9:00 PM EST.**

This informative session will provide an overview of the CrisisTrack platform and how it supports damage assessment, resource tracking, situational awareness, and operational coordination during emergencies and disasters. Participants will learn how CrisisTrack can streamline documentation, improve reporting accuracy, and strengthen communication between CERT teams and emergency management partners. It will include practical examples from both training and real-world incidents to highlight how the system enhances operational efficiency. Lessons learned, best practices, and implementation tips will be discussed to help teams successfully integrate CrisisTrack into their preparedness and response activities. Whether you are new to the platform or looking to expand your current capabilities, this webinar will offer useful, actionable insights to support your program.

This session is open to all CERT volunteers, team leaders, and emergency management partners across Connecticut and nationwide. The webinar will be recorded and posted on the CT CERT YouTube channel for anyone unable to attend live.

**Registration:**

<https://www.train.org/connecticut/course/1120854/compilation>

**Tuesday, February 17, 2026 7:00 PM – 9:00 PM EST**

**Building an Advanced CERT Program**

This session will explore how CERT members and leaders can expand their program’s reach beyond traditional disaster preparedness roles to support broader community resilience and emergency management efforts.

**Thursday, March 26, 2026**

**3:00 PM – 5:00 PM EST**

**CT – TRAIN - Webinar Registration:** <https://www.train.org/connecticut/course/1120854/compilation>

**Previously Recorded CT Webinars:**

- [CT3 2025: Food Safety](#)
- [CT3 2025: Amateur \(Ham\) Radio](#)
- [CT3 2025: Hurricane Forecast & Preparedness](#)
- [CT3 2025: Cybersecurity](#)
- [CT3 2025: Search & Rescue](#)

**How to Register:**



1. **Create a free account** on CT.Train.org or log in if you already have an account.
  2. Join the CT DEMHS group by entering “CTDEMHS” in your profile under “Manage Groups” > “Join By Group Code.”
  3. Register by visiting [CT.Train.org](https://www.train.org), search for ID **1120854**.
- Or use the QR code.**
4. Select the sessions you would like to attend and click “Register.”

Point of contact: Michael Davis, Trainer CT DEMHS [CT.gov/DEMHS](mailto:Michael.W.Davis@CT.gov)

[Michael.W.Davis@CT.gov](mailto:Michael.W.Davis@CT.gov) (860)278-6855

**[Connecticut CERT YouTube Channel](#)**

This new platform will feature a variety of content, including past **CT CERT CONNECT Webinars**, training sessions, and other emergency preparedness videos, all specifically designed for Community Emergency Response Teams (CERT). Visit the channel to access valuable resources and stay informed on CERT-related topics that help strengthen our communities during emergencies.

## Previous Presentations of LAFD CERT Related Training / Events:



LAFD CERT training courses are always open to everyone, regardless of whether you have taken CERT training or even if you do not live in Los Angeles. You can find videos of previous LAFD-CERT trainings on their YouTube channel at: <https://www.youtube.com/c/LAFDCERTCoordinators>



**CERT Continuing Education - Disasters Happen Every Day - What You Can Do to Prepare - Recorded on January 21, 2026**  
<https://www.youtube.com/watch?v=IEubBwjoVfs>



**LAFD CERT Continuing Education - The Power of CERT Outreach**  
<https://www.youtube.com/watch?v=WMwQp-mPqGk>



**LAFD CERT Continuing Education - What to Do After the Earth Stops Shaking**  
<https://www.youtube.com/watch?v=YftokOPhHYA>



**LAFD CERT Continuing Education - How Asking Questions Could Save Your Life!**  
<https://www.youtube.com/watch?v=2jhKcLFthtw>



**LAFD CERT Continuing Education - Beyond the Basic Training: What's Next in CERT**  
<https://www.youtube.com/watch?v=pG3pPWogz9U&t=16s>



**TEMA** – Consider enrolling in the **TEMA 101** class the next time it is offered at **TEMA HQ**: Suiter Room 3041 Sidco Drive Nashville, TN 37204 Contact: [TEMA.Training@tn.gov](mailto:TEMA.Training@tn.gov) This one-day course is designed to introduce participants to TEMA and emergency management in Tennessee. It covers various topics, including the history of emergency management, hazards in Tennessee, the legal framework surrounding emergency management, TEMA's administrative structure, and its role during disasters. Please submit your completed Student Application to [TEMA.Training@tn.gov](mailto:TEMA.Training@tn.gov) to register for this course.

More information about many other TEMA courses and registration links can be found in the TEMA Training Calendar at:

<https://www.tn.gov/tema/emergency-community/training/training-calendar.html>



## Upcoming In-Person Classes at the Mid Cumberland Regional Health Office – Training Calendar

Thank you Glenda Williams for sharing the following information about the MRC 2026 classes which will be held at the Mid Cumberland Regional Health Office, 710 Hart Lane, Nashville from 8:30 a.m. to 4:30 p.m. each day unless otherwise indicated. All sign-up links are listed below.

The following classes will be held on the dates and at the location as indicated. Each class is from 8:30 a.m. to 4:30 p.m. each day unless otherwise indicated. If you register for any TEEX, CISA or NDPTC class, you must have an student account <https://my.teex.org/TeexPortal/?MO=mRegister> and/or a NDPTC <https://ndptc.hawaii.edu> and you must attend the entire class to receive a completion certificate. Your FEMA SID# will also be required to enroll. If you need to register for an SID# – please follow this link <https://cdp.dhs.gov/FEMASID/register> Classes are free and seats are limited. If you have questions, please contact [Glenda.D.Williams@tn.gov](mailto:Glenda.D.Williams@tn.gov)

The courses highlighted below in green are required for the TEEX Community Disaster Preparedness for Healthcare Certificate Program.

**March 5, 2026 TEEX AWR 160 Standardized Awareness Training (SAT) THIS IS A ONE (1) DAY CLASS**

<https://my.teex.org/TeexPortal/?MO=mClassRegistration&D=FP&C=OGT208&S=347>

Dickson County EMA - 284 Cowan Street, Dickson, TN 37055

**March 10-11, 2026 TEEX MGT 319 Medical Countermeasure: Point of Dispensing (PODs)**

<https://my.teex.org/TeexPortal/?MO=mClassRegistration&D=FP&C=MGT319&S=676>

Sumner County EMA- 255 Airport Rd, Gallatin, TN 37066

**March 24-26, 2026 TEEX PER 212 Operational Level Response to HazMat /WMD Incidents**

<https://my.teex.org/TeexPortal/Default.aspx?MO=mCourseCatalog&D=FP&C=PER212&S=1176>

Dickson County EMA - 284 Cowan Street, Dickson, TN 37055

**August 18 & 19, 2026 TEEX PER 334 Disaster Preparedness and Survival: A Guide for Individuals, Families and Communities THIS IS A 2 DAY CLASS 6 hours each day 9:00 a.m. – 3:00: p.m.**

<https://my.teex.org/TeexPortal/?MO=mClassRegistration&D=FP&C=PER334&S=302>

Wilson County EMA – 110 Oak Street, Lebanon, TN

**September 22 & 23, 2026 TEEX 439 Pediatric Disaster Response and Emergency Preparedness**

<https://my.teex.org/TeexPortal/?MO=mClassRegistration&D=FP&C=MGT439&S=636>

Wilson County EMA – 110 Oak Street, Lebanon, TN



Dr. Whitnie Smartt leads a statewide [Disaster Animal Response Team \(DART\) program](#), under the Tennessee Department of Agriculture (TDA), that trains and coordinates volunteers to help animals during emergencies. Local DART teams exist in several counties, such as [Hamilton](#), [Putnam](#), [Sullivan/Washington](#), and [Wilson](#) which serve as crucial partners to emergency management agencies by providing animal shelter, rescue, and care during disaster. [Tennessee DART Code of Conduct](#)

**Continuing Education:** To maintain interest and to increase the knowledge of emergency management, FEMA has developed a series of modules. The topics include IS-10 & IS-11 Animals in Disasters, Module A & B, IS-111 Livestock in Disasters; IS-5 An Introduction to Hazardous Material & IS-22 Are You Ready. These are all encouraged but not required. Any credentialed person can take the modules. For information about scheduled training or to schedule training in your area, please contact the State Veterinarian's office at (615) 837-5120.

## FEMA REGION 2 – Previous Preparedness Webinars

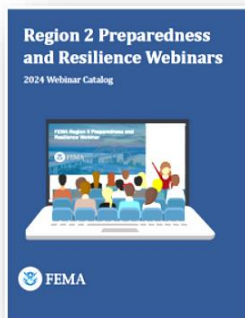


**FEMA**  
Region 2

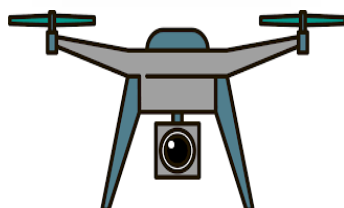


## Preparedness and Resilience WEBINAR Series

[Watch previously recorded webinars](#) that focus on topics impacting individual and community preparedness. Webinar Catalogs: [2024](#) | [2023](#) | [2022](#) | [2021](#) | [2020](#)



Tennessee is in FEMA Region 4. However, THANK YOU Debbie Costa at FEMA Region 2 for conducting excellent CERT-related webinars. This catalog contains a brief description and respective recording links to each of the [36 webinars hosted by FEMA Region 2 in 2024](#). Feel free to revisit or share with family, friends, co-workers, and your CERT volunteers.



**DRONES - Did you miss the excellent FEMA Webinar on Drones for Emergency Management?** See the webinar recording here: [Drones for Emergency Management](#) (Note: Please push the play button on the lower left portion of the screen to start the video). And see [FEMA Nebraska Flooding - Drones as a Tool for Damage Assessment & Flood Mitigation](#), [New Braunfels SAR – CERT Drone Team](#), [Northshore Emergency Management Coalition Drone Training page](#).

## ❖ Previously Recorded CERT Training Sessions



[LAFD CERT Continuing Education](#) has over one-hundred CERT related videos posted online. Recent videos include: [CERT Continuing Education: Sun vs the Earth - The Day Your Electronics Die](#) and [CERT Continuing Education: Shelter In-Place - Home is Where Your Stuff Is](#)



Tennessee is in FEMA Region 4. However, FEMA Region 2 conducted the following excellent webinars:

- ✓ [FEMA R2 Individual and Community Preparedness 2024 Mid-year Webinar Catalog PDF](#)  
Thanks to Debbie Costa and FEMA Region 2, for hosting many CERT related webinars with FEMA subject matter experts, state and local partners, other federal agencies, first responders, and CERT volunteers on a wide variety of topics. 2024 webinar links highlighted in YELLOW: [https://content.govdelivery.com/attachments/USDHSFEMA/2024/07/10/file\\_attachments/2932641/2024\\_midyear\\_webinar\\_catalog\\_REV\\_2.pdf](https://content.govdelivery.com/attachments/USDHSFEMA/2024/07/10/file_attachments/2932641/2024_midyear_webinar_catalog_REV_2.pdf) For previous webinars see [FEMA Region 2 Preparedness, Resilience, and CERT Webinars](#)
- ✓ [CERT Callout and Deployment Procedures](#) - Many CERT programs have deployed their CERT Volunteers for various emergency and disaster response activities. This presentation discusses the CERT Call out and Deployment procedures utilized by the Los Angeles City Fire Department and San Francisco City Fire Department. <https://fema.connectsolutions.com/pm1pihky5zyo/>
- ✓ [CERT Volunteers and the EOC](#) - Santa Barbara City and County (California) have utilized CERT volunteers to support EOC operations. This presentation will discuss the roles that CERT volunteers can play, and the types of training CERT volunteers should receive to help them succeed in the EOC environment. <https://fema.cosocloud.com/ptp6hljne3x3/>
- ✓ [CERT Code of Conduct and what if you need to dismiss a Volunteer?](#) - CERT Volunteers can be a blessing or a burden. This presentation will discuss the importance of a Code of Conduct for CERT Volunteers and how to properly manage, discipline, and dismiss a CERT volunteer if necessary. <https://fema.connectsolutions.com/ppegbmppu4bk/>
- ✓ [How to plan and execute a CERT Exercise Competition/Rodeo](#) The planning and execution of one of these events is not easy but can be tremendously rewarding for all CERT programs and their CERT Volunteers. Presenters discuss how to effectively plan and execute these events, including lessons learned and best practices. <https://fema.cosocloud.com/p8451i7btaoh/>
- ✓ [How to Keep CERT Training Fun & Engaging](#) - How to utilize various types of instructors to enhance the learning environment within a CERT program. Participants discuss how to create and deliver training presentations. <https://fema.cosocloud.com/pvryt1u6cyfp/>
- ✓ [Animal Sheltering During Disasters](#) - During a disaster, many survivors are separated from their animals. Animal shelters can be a major operation during a disaster response. In this

presentation, participants will learn about Animal Shelter Operations and how to care for animals belonging to disaster evacuees. <https://fema.cosocloud.com/pfo58a7sifm8/>

- ✓ **[Planning for Your Pets, Assistance, and Service Animals in an Emergency](#)** - FEMA Region 2 hosted a webinar about including your pets, assistance, and service animals in your preparedness plans and considering their needs when developing your emergency plan, building an emergency kit, and carrying out other preparedness actions. <https://www.fema.gov/node/planning-your-pets-assistance-and-service-animals-emergency>
- ✓ **[Resolve to be Ready: Ten Steps to Preparedness. Forming a local CERT program:](#)** **Help your community be prepared for any disaster. This webinar discusses how to engage with your local community by starting a CERT program and helping respond to nearby disasters and emergency needs.** Topics include History of CERT - Campus CERT - Local CERT - Communications - Organization - Grant Sponsors - Hybrid CERT - Program Managers - Hazard Annexes - HR Perspective - Liability - and Funding. The FEMA CERT Lead discusses CERT across the U.S. <https://www.youtube.com/watch?v=t0DFy4uj-Wk>
- ✓ **[Maintaining and Revitalizing your CERT Program](#)**  
Teresa Greenhalgh, San Diego County OES, delivered a presentation to share best practices for maintaining and revitalizing your CERT program. <https://fema.connectsolutions.com/pp9xyw4paz8s/>
- ✓ **[Restart and Rejuvenate Your CERT Program After COVID-19](#)**  
This webinar provides some tips and best practices on returning to typical CERT activities and to help CERT programs re-engage their community and members. CERT program leaders from around the country participate in the conversation. <https://fema.connectsolutions.com/p934tthlhsmB/>
- ✓ **[Team Building for CERTs](#)**  
To maintain a productive and cohesive team, it is essential to identify strengths, challenges, and contributions of each team member. We will look at characteristics of high functioning teams and discuss team building exercises you can conduct in your own CERT environment. <https://fema.connectsolutions.com/pn29d10pwyor/>
- ✓ **[Amateur "HAM" Radio for Emergency Managers](#)**  
This webinar provided guidance to Emergency Managers on establishing a viable AUXCOMM (Auxiliary Communications) program as part of your Emergency Operation Plan ESF-2. <https://fema.connectsolutions.com/plqiby693o3d/?proto=true>
- ✓ **[Bringing CERT Into The 21st Century](#)**  
It is more important than ever to be able to REPORT, RECORD and DOCUMENT information and share that information in a concise and effective way. <https://fema.connectsolutions.com/pjq1izvcl6ez>
- ✓ **[Communicating With People with Disabilities as First Responders or CERT Team Members](#)**  
This presentation will help CERT members understand how to communicate with a cross-section of disabilities, recruiting people with disabilities to your teams, and creating inclusive plans to help people with disabilities stay safely in their homes. <https://bit.ly/DAFNComm>

## ❖ Additional CERT Related Training Videos, PowerPoints, and Webinars

After CERT Basic classes, consider additional training sessions for your CERT volunteers. CERTs can also be trained on disaster mitigation, response, and recovery techniques.



**Firefighter Rehab Training** This 2023 Hays County, Texas CERT video covers their deployment process and setting up a **Firefighter Rehab Station** during an incident (6:02 min.).

<https://www.youtube.com/watch?v=2R3tn-2RSM>



A very brief video of Monterey, CA CERT setting up a **Firefighter Rehab Station** (0:11 sec.).

<https://www.facebook.com/MontereyCERT/videos/960880468152980/>



2023 Santa Rosa County CERT – “Responder Rehabilitation at an Emergency Scene” **Firefighter Rehab Training** (44:25 min.)

<https://www.youtube.com/watch?app=desktop&v=6kzNcA8TOgg&sfnsn=mo>

And see the [CERT Firefighter Rehab Module PPTs](#).

- [Adventist Learning Community - ACS Disaster Response Training](#)
- [FEMA - Additional CERT Resources - Links to CERT Guides, Manuals, and PowerPoints](#)
- [FEMA - Emergency Management Institute \(EMI\)](#) - CERTs in leadership positions are encouraged to take the CERT Train-the-Trainer and Program Manager courses.
- [YouTube – List of 107 CERT Related Videos](#)
- [LAFD - CERT - List of Training Videos](#)
- [LAFD - CERT Continuing Education](#)
- [LAFD - CERT Coordinators YouTube Channel](#)
  - [CERT Forms and the Role of the Scribe](#)
  - [CERT Staging Areas and Initial Response to a Disaster](#)
  - [Disaster Medical Triage](#)
  - [Disaster Gas Shutoff](#)
  - [Leading Medical Response Teams](#)
  - [Neighborhood Resilience and Security AFTER the Disaster](#)
  - [Neighborhood Team Program - Los Angeles](#)
  - [Organizing and Leading Successful Teams](#)
  - [Organizing Your Neighborhood and Advanced Personal Preparedness](#)
- [LAFD - CERT Bandaging and Splinting](#) (6:31)
- [CERT Hands-on Search and Rescue - Part 1](#) (9:06)
- [CERT Hands-on Search and Rescue - Part 2](#) (5:44)
- [CERT Tools for Leadership Success pdf](#)
- [CERT Tools for Leadership Success - Martinez CERT PPTX slides](#)

- [Demonstration of CERT T-T-T Cribbing Training](#) (4:27)
- [Disaster Survival Skills - Cribbing Rescue Training for CERT/Search & Rescue Team](#) (5:58)
- [First Class Responder - Cribbing Basics, Part 1](#)
- [Disasterville - 2021 NCA CERT Conference](#)
- [Fire Drill - The Office TV Show - Comedy](#) (4:56)
- [Fire Extinguisher Training Video - SCCFD](#) (2:48)
- [Fire Safety: The CERT Team Member's Role - Alameda CERT](#) (18:25)
- [Glove Removal & Disposal](#) (0:41)
- [Hazmat Training Courses – Free Online TRANSCAER training](#)
- [Head-to-toe Assessments CERT T-T-T Course](#) (5:45)
- [Head-to-toe Assessments LAFD - CERT](#) (14:26)
- [Head-to-toe Assessments Montana HOSA - CERT](#) (7:44)
- [How To Turn Off Electricity at the Circuit Box](#) (0:48)
- [Lamorinda, CA CERT – Presentation Files – PowerPoints and PDFs – EXCELLENT!](#)
- [Map Your Neighborhood: The Plan in Action](#) (10:24)
- [OSHA - Chainsaw Training](#)
- [OSHA - Forklift Training](#)
- [Previous FEMA Webinars](#)
- [Psychological First Aid](#) (11:07)
- [Red Cross – First Aid, CPR, and AED Training](#)
- [San Diego Co. CA - OES First Responder Access & Functional Needs Training Videos](#)
  - [Alzheimer's & Memory Loss](#)
  - [Autism](#)
  - [Blind & Low Vision](#)
  - [Chronic Illness](#)
  - [Cognitive Disabilities](#)
  - [Deaf & Hard of Hearing](#)
  - [Mental Illness](#)
  - [Physical Disabilities](#)
- [Safe and Ready - CERT Refresher Training - 7 videos](#)
- [Safety in the After Disaster Environment](#) (31:47)
- [Search and Damage Assessment Training](#) (52:29)
- [Search & Rescue Training CERT Mutual Aid - City of Irving, TX - CERT](#) (4:28)
- [Tennessee Emergency Management Plan \(TEMP\) - 2018](#)
- [TDOT Launches Yellow DOT Program](#) (2:06)
- [Traffic Control - Anaheim, CA CERT](#) (8:27)
- [Triage - Handling Mass Casualty Situations](#) (22:22)
- [Triage - CERT Triage & Mass Casualty Incidents pdf](#)
- [Triage - START - RPM - Part 1](#) (6:30)
- [Triage - START - RPM - Part 2](#) (9:26)
- [Vimeo - Several Online CERT Training Videos](#)
- [Ways to Stay Calm in an Emergency](#) (6:26)

## ❖ FEMA Preparedness and CERT Related Webinar Recordings

FEMA hosts many excellent preparedness and CERT webinars throughout the year. Please share these links with members of your CERT programs. Consider showing one of these webinars or videos at a regular training meeting for your CERT members. And see [FEMA Region 2 Preparedness, Resilience, and CERT Webinars](#) previous webinar recordings.

- [10 Ready-Made Tips You Can Use to Prepare for Disasters](#)
- [Amateur "HAM" Radio for Emergency Managers](#)
- [American Sign Language 101 for CERT](#)
- [CERT Disaster Response Best Practices](#)
- [CERT Virtual Disaster Workshop 1](#)
- [CERT Virtual Disaster Workshop 2](#)
- [CERT Virtual Disaster Workshop 3](#)
- [CERT Virtual Disaster Workshop 4](#)
- [Community Asset Mapping: Who Are the People in Your Neighborhood?](#)
- [Developing and Organizing your CERT Team to the Max - 2021 NCA CERT Conference](#)
- [Disaster Response and Disability - Approaches for Emergency Managers & CERT programs](#)
- [DHS - Active Shooter Preparedness Webinar](#)
- [Effective Interpersonal Communications for CERT](#)
- [Effective Use of Amateur Radio Volunteers in County Emergency Operations](#)
- [Emergency Financial First Aid Kit](#)
- [Exploring - Qualified Sign Language Interpreters in Emergency Management](#)
- [FEMA and the National CERT Association: Search and Rescue, Lost Person Behavior](#)
- [FEMA Resource Typing for CERT Overview and Q&A Part 1](#)
- [FEMA Resource Typing for CERT Overview and Q&A Part 1](#)
- [FEMA's Role in Response](#)
- [First Responder Access and Functional Needs Training Series](#)
- [Guides for Alerts and Warnings Webinar](#)
- [Helping Helpers – How to Support First Responders](#)
- [How to Avoid Disaster Fraud After an Emergency](#)
- [Human Trafficking: Recognize, Report, Respond pt1](#)
- [Human Trafficking: Recognize, Report, Respond pt2](#)
- [Lifelines to Communities: Food Distribution Best Practices](#)
- [Maintaining and Revitalizing your CERT Program](#)
- [Organizations Preparing for Emergency Needs \(OPEN\) - Part one](#)
- [Organizations Preparing for Emergency Needs \(OPEN\) - Part two](#)
- [Psychological First Aid for Children](#)
- [Psychological First Aid](#)
- [Psychological Resilience](#)
- [Ready Youth Toolkit in a Box](#)
- [Residential Fire Life Saving Strategies](#)
- [Resilience in Philadelphia: A Case Study](#)
- [Restart and Rejuvenate your CERT Program After COVID-19](#)
- [Selfcare for Disaster Responders and Healthcare Workers](#)
- [Team Building for CERTs](#)
- [The Past, Present and Future of CERT](#)
- [Trauma Informed Care](#)
- [Trauma-Informed Management of People in Crisis for CERT Teams](#)
- [You are the Help, Until Help Arrives](#)

## ❖ FEMA - EMDU - EMI - Online Independent Study Training Opportunities



Looking for more CERT-related training opportunities? CERT Instructors and CERT Volunteers can take free [FEMA-EMI Independent Study Courses \(IS\)](#), and they may apply to take an

in-person EMI course through FEMA. The [FEMA - National Disaster & Emergency Management University \(NDEMU\)](#) offers online, virtual, and in-person courses several times per year. To sign up for a [FEMA-Emergency Management Institute \(EMI\)](#) course, you will first need to obtain a [FEMA Independent Study Student Identification Number \(SID\)](#). **To take an Independent Study course, you will need to create a [FEMA Student Identification Account \(SID\)](#).** Or if you have forgotten your SID, please go to the [FEMA SID website](#). **But before submitting a training course application for a FEMA Instructor led class, such as K-0427 or K-0428, please contact [don.sowers@tn.gov](mailto:don.sowers@tn.gov) to facilitate the necessary approvals.** But these approvals are not required for simply taking the [FEMA-EMI Independent Study \(IS\) online courses](#) below.

***Please recommend your CERT volunteers take some of the following free EMI online courses. Those highlighted in Red are part of the recent optional CERT Resource Typing requirements:***

- [IS-10.A: Animals in Disasters: Awareness and Preparedness](#) This course describes how typical hazards affect animals. It increases awareness and preparation for animal owners, care providers, and responders.
- [FEMA - EMI Course IS-0013: EMI Conduct and Behavior](#) **This course is now required** before participating in any training at the FEMA - NDEMU - EMI Campus. However, it only needs to be completed once.
- [FEMA-EMI IS-100.C: Introduction to the Incident Command System, ICS 100](#) introduces the Incident Command System (ICS) and provides the foundation for higher level ICS training. This course describes the history, features and principles, and organizational structure of the Incident Command System.
- [IS-120.C: An Introduction to Exercises](#) This course introduces the basics of emergency management exercises.
- [FEMA-EMI IS-200.C: Basic Incident Command System for Initial Response](#) reviews the Incident Command System (ICS) and provides the context for ICS within initial response and supports higher level ICS training. This course provides training and resources for CERT personnel who may assume a supervisory position within ICS.
- [FEMA-EMI IS-700.B: An Introduction to the National Incident Management System](#) course provides an overview of the National Incident Management System (NIMS) which defines the comprehensive approach guiding the whole community - all levels of government, nongovernmental organizations (NGO), and the private sector - to work together seamlessly to prevent, protect against, mitigate, respond to, and recover from the effects of incidents.
- [IS-240.C: Leadership and Influence](#) The goal of this course is to improve your leadership and influence skills. It addresses: Leadership from within, how to facilitate change, how to build and rebuild trust, using personal influence and political savvy, and fostering an environment for leadership development.

- **IS-241.C: Decision Making and Problem Solving** The goal of this course is to enable participants to improve their decision-making skills.
- **IS-242.C: Effective Communication** This course is designed to improve your communication skills. It addresses: Basic communication skills; How to communicate in an emergency; How to identify community-specific communication issues, using technology as a communication tool, Effective oral communication, and how to prepare an oral presentation.
- **FEMA-EMI IS-244.B: Developing and Managing Volunteers** The goal of this course is to strengthen abilities to prepare for and manage volunteers before, during, and after a severe emergency or major disaster. To provide strategies for identifying, recruiting, assigning, training, supervising, and motivating volunteers. Include discussion of spontaneous volunteers, community based, faith-based, and non-governmental organizations (NGOs).
- **FEMA-EMI IS-288.A: The Role of Voluntary Organizations in Emergency Management** This independent study course provides a basic understanding of the history, roles, and services of disaster relief voluntary agencies in providing disaster assistance. It is appropriate for both the public and those involved in emergency management operations.
- **FEMA-EMI IS-315.A: CERT and the Incident Command System (ICS) course** educates CERT program managers, trainers, emergency responders, and CERT volunteers about CERT's relationship to ICS and potential roles CERTs play while assisting agencies in disaster or emergency situations.
- **FEMA-IS-317.A: Introduction to Community Emergency Response Teams (CERT)** This Independent Study (IS) course is an introduction to the Community Emergency Response Team (CERT) program for those interested in learning about the CERT program for their own knowledge or as a pre-requisite for first responders to later teach the CERT Basic classroom training that may be available in your community.
- **IS-368: Including People with Disabilities & Others with Access & Functional Needs in Disaster Operations** This course provides an overview of disabilities and access and functional needs and explains how disaster staff can apply inclusive practices in their disaster assignments.
- **IS-405: Overview of Mass Care/Emergency Assistance** This course introduces Mass Care and Emergency Assistance support, focusing on the Whole Community, by outlining the importance of collaboration and coordination between government, non-profit, public, and private sectors.
- **FEMA-EMI IS-505: Concepts of Religious Literacy for Emergency Management** Religious and cultural communities are key partners in building a culture of preparedness. Faith-based and community organizations also offer a wide variety of human and material resources that can prove invaluable during and after an incident. Collaborating with these vital community members will allow emergency managers to access a multitude of local resources and ensure members of the whole community can contribute to disaster resilience efforts.
- **IS-632.A: Introduction to Debris Operations** The goal for this course is to familiarize the student with general debris removal operations and identify critical debris operations issues.

- **[IS-660: Introduction to Public-Private Partnerships](#)** The goal of this training is to establish a common vocabulary for public sector agencies and private sector organizations to improve response, recovery, and resilience.
- **[IS-700.b An Introduction to the National Incident Management System](#)** This course provides an overview of the National Incident Management System (NIMS) which defines the comprehensive approach guiding the whole community - all levels of government, nongovernmental organizations (NGO), and the private sector - to work together seamlessly to prevent, protect against, mitigate, respond to, and recover from the effects of incidents. The course provides learners with a basic understanding of NIMS concepts, principles, and components.
- **[IS-703.B: National Incident Management System Resource Management](#)** The is to introduce NIMS Resource Management. This includes private industry and volunteer agency personnel responsible for coordination activities during a disaster.
- **[IS-800.D: National Response Framework, An Introduction](#)** The goal of this course is to provide guidance for the whole community and focuses especially on those who are involved in delivering and applying the response core capabilities.
- **[IS-909: Community Preparedness-Implementing Simple Activities for Everyone](#)** The purpose of this course is to present a model program for community preparedness with resource materials to help organizations conduct simple preparedness activities.
- **[IS-1151: Blue Campaign Disaster Responder Training](#)** In this 6-minute video for disaster response personnel, we will learn how to recognize, and report suspected human trafficking. As someone trained in disaster response, we are in a unique position to spot potential instances of human trafficking. Human traffickers have their guard down during these times and suspicious activity may become more apparent.
- **[IS-1152: Blue Campaign First Responder Training](#)** This one-hour course will help you understand human trafficking, who can become a victim, and how you can play a role in identifying suspected victims. As a first responder, you are often first on the scene in an emergency. This gives you the unique opportunity to notice signs of human trafficking.
- **[IS-1300: Introduction to Continuity of Operations](#)** This course is intended to lay the foundation of knowledge for students who wish to increase their understanding of continuity and build a comprehensive continuity program in their organization or jurisdiction.
- **[IS-2200: Basic Emergency Operations Center Functions](#)** The Basic Emergency Operations Center Functions course is designed to introduce the role, design, and function of the Emergency Operations Center (EOC) and the supportive relationship as a NIMS Command and Coordination component of the Multiagency Coordination System.

## ❖ About the Author



Over forty-years, Don Sowers has been a professional first responder, emergency manager, volunteer leader, lecturer and instructor for several government agencies and volunteer organizations. Currently, he is the manager of Disaster Volunteer Services for Volunteer Tennessee (the TN Governor's commission for volunteerism and community service). He is also an ESF-14 Emergency Services Liaison to the Tennessee Emergency Management Agency (TEMA). And he provides administrative support for the local Tennessee Community Emergency Response Team (CERT) programs acting as the Tennessee State CERT Coordinator to the Federal Emergency Management Agency (FEMA).

Don brings considerable experience in the fields of law, emergency management, and public safety. He is a retired attorney with a Juris Doctor degree. And he is currently an Adjunct Instructor at Tennessee TECH University, where he teaches emergency management graduate courses. He is currently assisting the National VOAD Community Preparedness Committee - Education Workgroup - by making presentations on CERT.

Before moving to Tennessee, Don practiced law in California for thirty years and was an instructor at the Los Angeles County Sheriff's Academy for twenty-eight years. Previously, he was a City of Santa Monica police detective, Los Angeles County deputy district attorney, managing partner of a California law firm, County CERT program manager, and County deputy director of emergency management.

While a City of Santa Monica police detective, he proudly served on President Ronald Reagan's protection detail. And while the SMPD 911-Communications Center Manager he worked on the 1984 Olympics as a communications liaison. His volunteering included being the former: chairman of the board for Make-A-Wish of Los Angeles, member of the National Board of Directors of Make-A-Wish of America, vice-chairman of Make-A-Wish Foundation International, member of the Board of Trustees and president of Alumni Association at Southwestern University School of Law, chairman of the Los Angeles County Bar Association - Criminal Justice Section, and chairman of the City of San Juan Capistrano Community Emergency Response Team (CERT) in Orange County, California.

In 2000, Don was recognized as Southwestern University's Alumnus of the Year. And in 2010, he received the President's Volunteer Service Award from the United States Council on Service and Civic Participation.

Don is currently a Leadership Board member of the: National CERT Association and is the NCA - State CERT Coordinators Forum manager, member of the: International Association of Emergency Managers (IAEM), Emergency Management Association of Tennessee (EMAT), Tennessee Volunteers Active in Disaster (TNVOAD), Putnam County TN Amateur Radio Emergency Services (ARES), and Volunteer Tennessee - TN.gov. Recently, he was one of the Volunteer Reception Center managers for both the Putnam County, TN - Emergency Management Agency (EMA) 2020 Cookeville, TN tornado response and the 2021 Waverly, TN flooding and TN VOAD. He also helps coordinate volunteers during disasters and severe weather volunteer responses in Tennessee.

## ❖ Updates to this CERT Resource Guide - We would like to hear from you!

Updated as of February 2026 - Most of the information in this CERT Guide was compiled from the public domain, FEMA materials, open sources, and links which apply to all CERT programs in the U.S. These documents may provide guidance and assist you in starting or managing a CERT program. However, these materials are provided for educational and informational purposes only and are not a substitute for professional training and advice from qualified CERT instructors.

**Please share our Tennessee CERT Resource Guide widely** with your CERT Program Managers, Instructors, Volunteers, and other organizations. And most information in this CERT Guide applies to CERT programs across the U.S. Consider encouraging your CERT volunteers to click on the links in this regularly updated CERT guide to take advantage of these additional training opportunities.

**We would appreciate your feedback.** Please let us know if you have any upcoming training opportunities, suggestions for additional topics, find any 404-broken links, or identify some additional websites through Google, YouTube, etc. for us to include in our next revision of this CERT Guide. And if you are considering a local CERT program for your community, workplace, or organization and would like additional information about CERT emergency preparedness training, contact [don.sowers@tn.gov](mailto:don.sowers@tn.gov) at Volunteer Tennessee, so we can offer our assistance. Thanks.