

Agenda Item: VI. D.**DATE:** January 26, 2017**SUBJECT:** Nashville State Community College Master Plan**ACTION RECOMMENDED:** Approval

BACKGROUND INFORMATION

Master plans provide an opportunity for long-range planning that incorporates the institution's needs and ambitions, while also providing the public and state government a sense for how the institution might evolve over time. Whether the acquisition of strategic property, the need for and efficient use of facilities, or an analysis of how the campus footprint meshes with the surrounding community, master plans provide a method of anticipating and preparing for the future needs of the campus and the students it serves. THEC encourages institutions to produce a master plan every five years.

MASTER PLAN SUMMARY

Nashville State Community College is the largest of Tennessee's 13 community colleges by student headcount, enrolling 10,701 students in Fall 2015 across all five campuses (FTE enrollment = 6,272). Approximately 59% of those students are enrolled part time and 41% are enrolled at a satellite campus or off-campus teaching location. The campus planning and design firm, TSW, used the THEC Space Model, campus input, and local and regional demographic data to develop the Master Plan. Both Nashville State's Main and Southeast campus currently have adequate space, but the Clarksville campus has great needs in classrooms, labs, faculty offices, libraries, and parking. Montgomery County (Clarksville) is projected to experience a 2% population growth between now and 2025—the largest in Nashville State's service area. The College's average classroom occupancy exceeds the THEC standard (75% of stations occupied compared to 60% THEC standard) and average lab station use closely approaches THEC guidelines (76% compared to 80%). The Master Plan does not include the demolition, renovation, or addition of facility space on the Main campus, but does recommend the development of a quad, construction of a 28,000 gross square feet facility, and expansion of parking at the Clarksville campus. The Master Plan also recommends two new campuses for Nashville State to serve Davidson County's rapidly growing populations in the North and East.

RECOMMENDATION

The 2016 Nashville State Master Plan provides a comprehensive yet flexible plan to guide the College for the next three decades. It has been thoroughly reviewed and THEC staff recommend it for approval.

Nashville State Community College Master Plan Executive Summary

Nashville State serves the most populated metropolitan region in Tennessee and has been the fastest growing public community college in the state over the past decade, due in part to rapid population growth within its service area. Its wide variety of academic programs served 11,653 (headcount) students total in Fall 2015.

While the existing amount of space is adequate on both the Main Campus and the Southeast Campus, there is a need for additional teaching, office, and other space types on the Clarksville Campus, as well as a need for additional parking on that site. A plan for expansions at this campus is shown on page 9 of the Master Plan. This plan would meet space and parking needs projected through enrollment growth benchmark 2, as shown in the table on this page. Growth projections show that growth will continue to decline on the Main Campus as it is captured by other existing campuses and proposed new satellite campuses in locations that better serve existing and future students.

A demographic study summarized on pages 18-24 of the Master Plan examined areas of high educational need as shown in the map on the following page. A number of conclusions can be drawn from the regional demographic data:

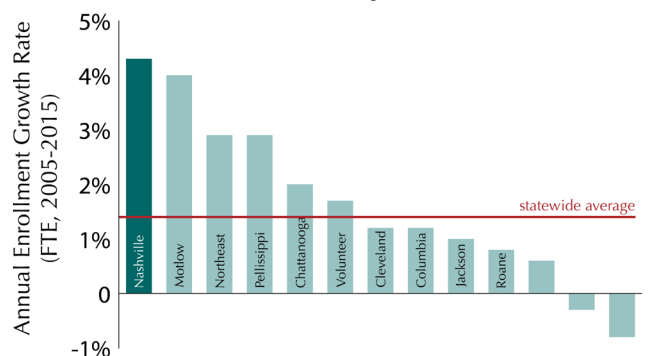
- Population growth is projected to be strong in the region in the coming years, especially in the Clarksville area.
- Population density is and will continue to be highest in central and eastern Davidson County. Low wage job density is highest west of downtown Nashville.
- There is a need for postsecondary education in the service area, particularly in and north of Clarksville and in central and southeastern Davidson County, areas well served by existing campuses.
- Nashville State's low participation rate relative to other Tennessee community colleges indicates the potential for growth.
- There are a significant number of competing institutions in Davidson County, but Nashville State's low tuition makes it competitive.
- There is potential demand for new campuses in eastern and northeastern Davidson County, as well as in Stewart or Houston County.

The Master Plan recommends the creation of two new Nashville State campuses within Davidson County to capture the need for additional higher education credentials, one in the eastern portion of the county,



Nashville State has continued to provide a high quality education despite significant enrollment growth

Statewide Growth Rate Comparison



Over the past decade, Nashville State has been the fastest growing public community college in Tennessee

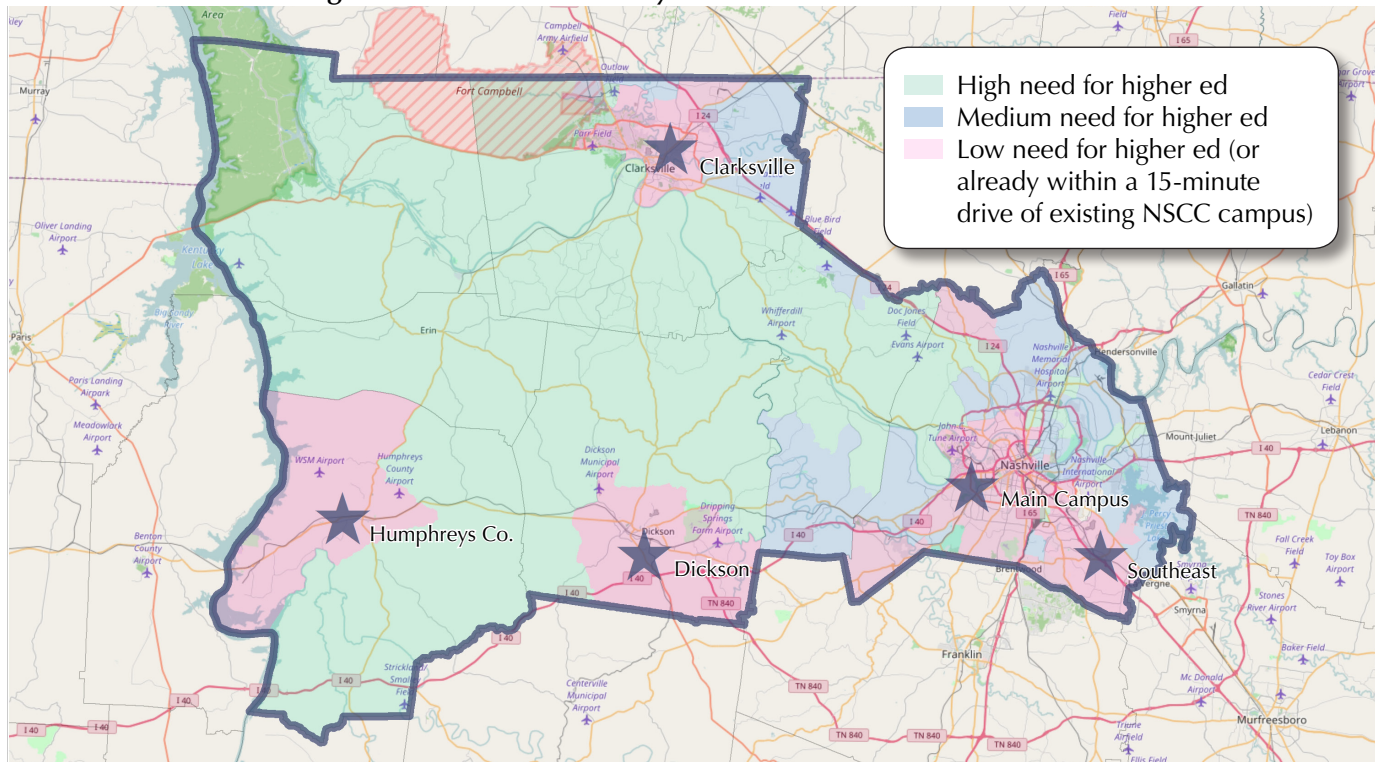
Table 4a: Enrollment Growth Benchmarks (FTE)

Campus	Fall 2015	Benchmark 1	Benchmark 2
Main	3,622	3,550	3,450
Clarksville	447	570	660
Dickson	190	220	250
Humphreys	292	292	292
Southeast	882	1,100	1,300
East Davidson County*	0	195	503
North Davidson County*	0	270	575
Total	5,433	6,197	7,030

**Proposed*

and another in the northeastern portion of the county. These campuses could be housed in leased or owned spaces. Care should be taken to make sure their final locations correspond with the areas of need, and are located sufficiently far from the Main Campus to avoid competition. General academic programs and estimated space needs for each campus are shown on page 69 of the Master Plan

Unreached Areas with High Need for Postsecondary Education

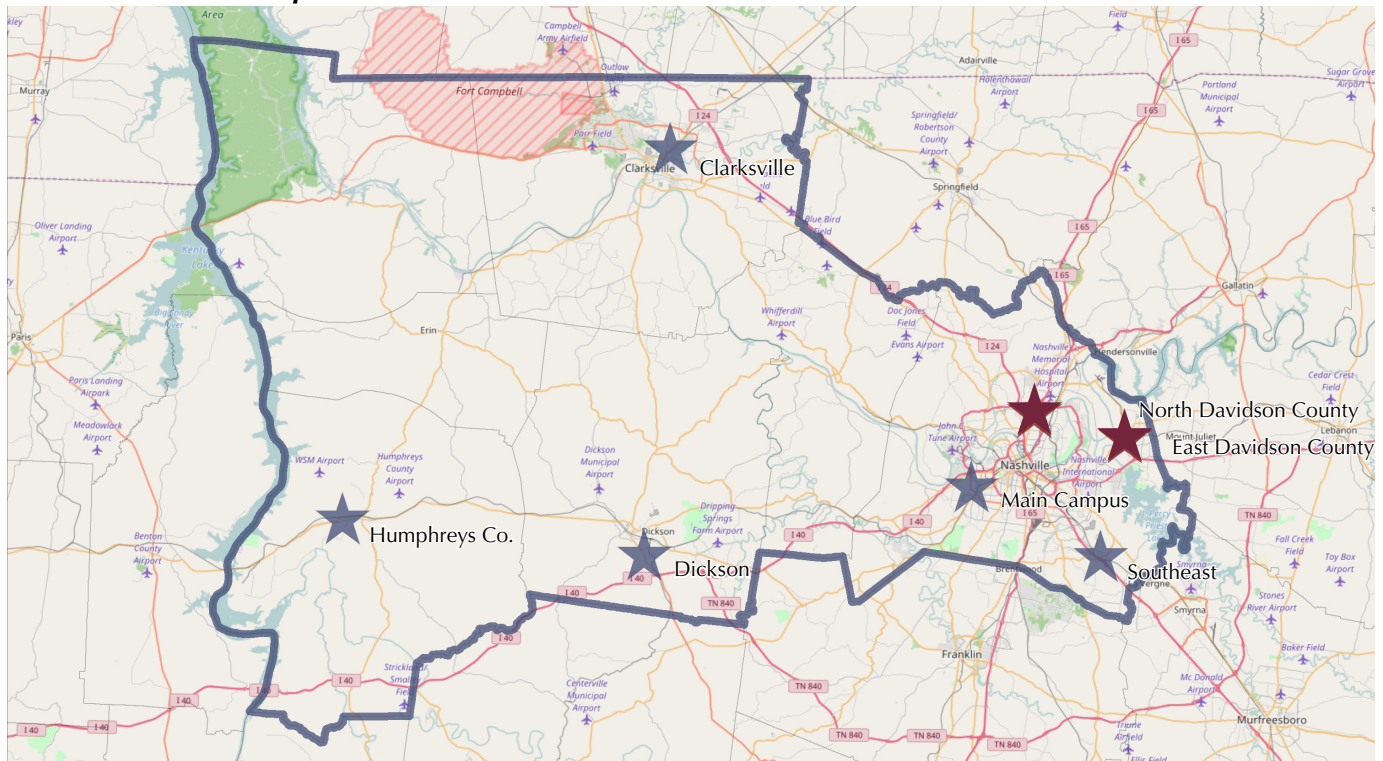


Areas show census tracts with high numbers of residents who have a high school diploma or equivalent, have not started college, and do not live within a 15-minute drive of an existing NSCC campus

Source: U.S. Census American Community Survey 2013 data

Map © OpenStreetMap (and) contributors, CC-BY-SA

Potential Satellite Campus Locations



All proposed campus locations shown are approximate

Map © OpenStreetMap (and) contributors, CC-BY-SA

Clarksville Campus Master Plan



Main Campus Existing Conditions

