



Department of
**Safety &
Homeland Security**

Tennessee Highway Safety Office Vulnerable Roads User Assessment

Tennessee Highway Safety Operations Conference
November 16, 2022

PED safety

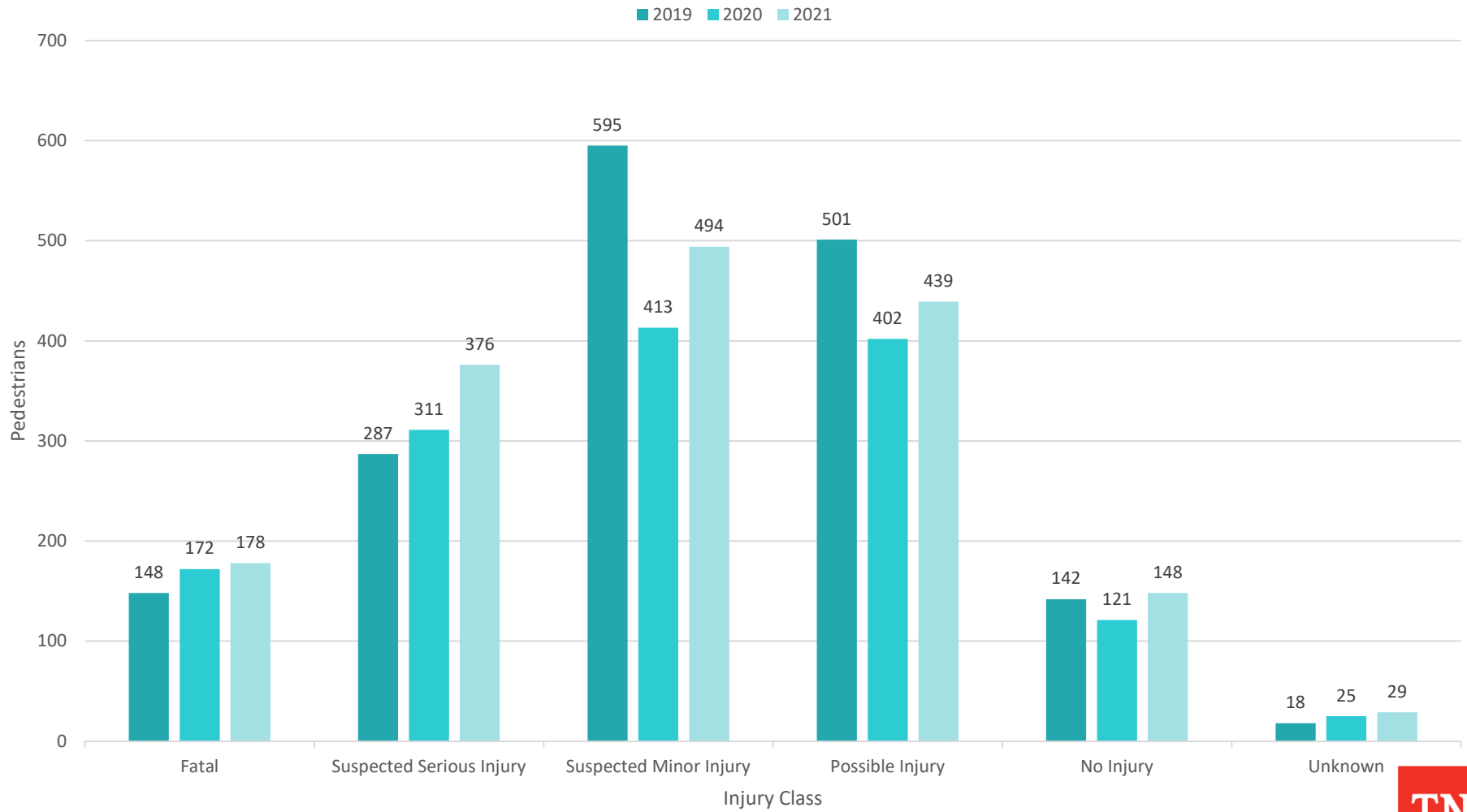


[WMt9G4GD-mw](#)

TN

Statewide Data

Pedestrians Involved in Tennessee Crashes by Year





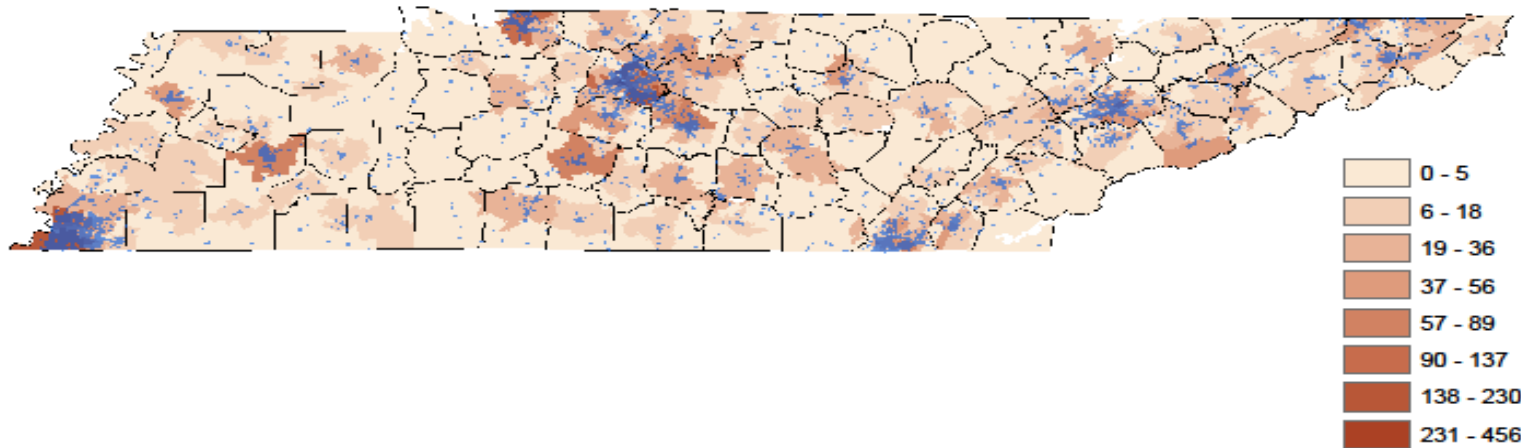
NHTSA DEMO PROJECT

- **Educational contracts**

- Walk Bike Nashville – 2017
- Collegedale Police Department – 2017
- Building Memphis – 2020
- Bike Walk Knoxville - 2021

Pedestrian Crashes

Pedestrians Involved in Crashes & Their Residency by Zip Code
2017 - 2022



10/18/22



Ped/Bike Safety Technical Assessment

- Requested by THSO – Not mandatory
- **Purpose** – This tool allows State management to review all components of a given highway safety or EMS program, note the program's strengths and accomplishments, and make recommendations for improvements.
- **Sections**
 - Program Management
 - Education
 - Enforcement
 - Engineering
 - EMS



Program Management

- Recommendations:
 - Establish a lead agency to coordinate pedestrian and bicycle safety programs across Tennessee.
 - **THSO**
 - Form an SHSP Pedestrian Safety Committee to identify pedestrian and bicycle safety champions to increase awareness and buy-in from all stakeholders.
 - **Task Force**



Education

- Recommendations:
 - Review and invite potential new stakeholders to the table as the Communication plan is reviewed and renewed following this Assessment.
 - THSO
 - TDOT
 - TDOH
 - EMS
 - TITAN
 - LEA
 - Ensure balance in the outreach to increase the safety of pedestrians and bicyclists by including education, media, enforcement, EMS, and engineering working as a team.



Enforcement

- Recommendation:
 - Prioritize High Visibility Enforcement and/or Engagement.
 - **Shelby Co. SO**
 - **Clarksville PD**
 - **Murfreesboro PD**
 - **Metro Nashville PD**
 - **Chattanooga PD**
 - **Knoxville PD**

Enforcement through Education

- Tip card

KNOW THE BASICS
Pedestrian Safety **BIKE PED TN**

Visit tntrafficsafety.org/bike-ped
for more information.

PEDESTRIAN SAFETY TIPS

- **BE PREDICTABLE** Obey signs and signals.
- **USE CROSSWALKS AND SIDEWALKS.**
- **BE VISIBLE** Utilize reflective material.
- **STAY ALERT** Avoid distractions like electronic devices.
- **DON'T WALK IMPAIRED.**

MOTORIST SAFETY TIPS

- **BE PREDICTABLE** Obey signs and signals.
- **YIELD** Always watch for pedestrians.
- **STAY ALERT** Avoid distractions like electronic devices.
- **DON'T DRIVE IMPAIRED.**

ARRIVE
TNTRAFFICSAFETY.ORG

- Reflective materials





Engineering

- Recommendations:
 - Expand the MMPO staff to meet the need of reviewing every roadway and bridge project design to incorporate pedestrian and bicyclist safety features.
 - Review and revise the TDOT Multimodal Project Scoping Manual to strengthen the design guidance to incorporate design standards into roadway projects at the planning and preliminary design stages.


- Recommendations:
 - Continue efforts to link injury related data. The end goal is to have linked TNEMESIS, Trauma Registry, TITAN, hospital, and death data to help with identification of the injury problem and support efforts to reduce it.
 - Encourage EMS and trauma program participation with other partners in law enforcement, engineering, education, and advocacy.



Task Force

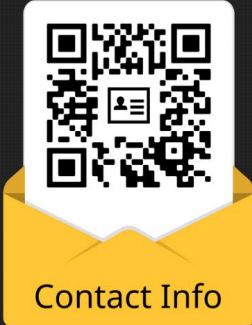
- Quarterly meetings
 - **December 12**
- Diversity
 - Program Management
 - Education
 - Enforcement
 - Engineering
 - EMS
- Consultant for Strategic Plan – Mike Iwai
 - **Implementation**

Questions?


 TENNESSEE HIGHWAY SAFETY OFFICE

KIM VAN ATTA

Bicycle and Pedestrian Safety Coordinator



Contact Info



kim.vanatta@tn.gov
615.618.5767