

**WOOD POLE GENERAL NOTES**

(A) LOCATIONS OF SIGNAL POLES SHOWN ON PLANS ARE APPROXIMATE AND CAN BE ADJUSTED UP TO 5' TO AVOID UTILITIES. ADJUSTMENTS GREATER THAN 5' MUST BE REVIEWED AND APPROVED BY ENGINEER.

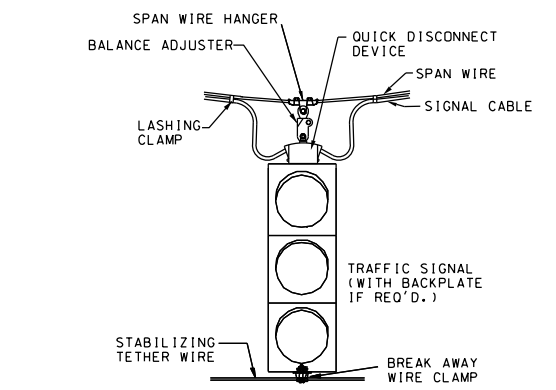
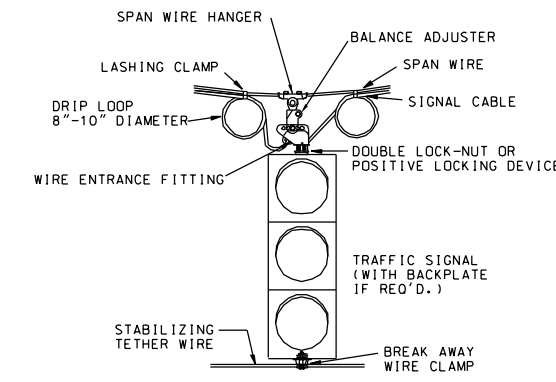
(B) POWER SERVICE CABLE SHALL BE RUN ON WOOD POLE IN SEPARATE 1" RGS RISER (SEE STD. DWG. T-SG-5).

(C) IF IT IS NECESSARY TO RUN POWER SERVICE CABLE FROM ONE POLE TO ANOTHER, IT SHALL BE RUN ON SEPARATE MESSENGER CABLE (2' ABOVE SPAN WIRE WITH SIGNAL OR DETECTOR CABLES).

(D) ALL WOOD SIGNAL SUPPORT POLES SHALL BE GUYED.

(E) RED INDICATIONS TO BE APPROXIMATELY SAME HEIGHT. HANGER CONNECTOR EXTENDER OR TETHER EXTENDER MAY BE REQUIRED.

(F) SEE STD. DWG. T-SG-4 FOR ADDITIONAL DETAILS.



REV. 6-7-72: ADDED PULL BOX TO CONTROLLER CABINET CONNECTION & CONDUIT RISER ASSEMBLY.

REV. 7-1-72: CHANGED DEPARTMENT NAME.

REV. 11-22-72: CHANGED MINIMUM CLEARANCE ON SIGNAL HEADS.

REV. 11-30-72: ADDED HORIZONTAL CLEARANCE TO POLE MOUNTED SIGNAL HEAD.

REV. 3-3-75: ADDED DETAIL OF DEAD END.

REV. 1-1-76: CHANGED DWG. NO. FROM TR-S-1 TO T-SG-1.

REV. 9-1-77: CHANGED PERCENT OF SAG ON SPAN WIRE.

REV. 5-7-79: ADDED SPAN WIRE TO ALTERNATE GUYING DETAIL.

REV. 4-13-84: DELETED REFERENCES TO SIZE 502 STRAIN INSULATOR. ADDED DETAIL FOR SPAN INSULATOR.

REV. 4-12-85: ADDED NOTE FOR POLE EMBEDMENT. CHANGED POLE SIZE TO CLASS 3. CHANGED "SPAN" INSULATOR TO STRAIN INSULATOR.

REV. 8-22-91: ADDED GUY GUARD. CHANGED GUY CABLE SIZE TO 3/8" INCH. CHANGED SERVICE CABLE CONDUIT SIZE TO 1". DELETED FUSE BOX.

REV. 7-29-96: REDREW SHEET ON CADD AND MADE MINOR CHANGES.

REV. 12-16-03: ADDED QUICK DISCONNECT, ADDED TETHER CABLE. CHANGED SAG TO 5% MAX.. ADDED SIGNAL MOUNTING DETAIL. AND REVISED SHEET TITLE.

REV. 7-29-04: REDREW, RENAMED AND REDESIGNED SHEET.

REV. 11-1-11: REVISED R10-12 SIGN TO BE USED AS AN OPTIONAL SIGN.

REV. 6-27-16: ADDED DIMENSIONS FROM SPAN WIRE TO POWER SERVICE TO TOP OF POLE ON SPAN WIRE DETAIL. CHANGED MAX. MOUNTING HEIGHT FROM 25'-6" TO 25.6'. CHANGED 3/8" SPAN WIRE TO 3/8" MIN. SPAN WIRE ON DETAIL B. REORGANIZED AND REVISED MOUNTING HARDWARE DETAILS. DELETED NOTE E FROM WOOD POLE GENERAL NOTES AND RE-LETTERED REMAINING NOTES. MADE MINOR TEXT EDITS ON THE SHEET.

□ MINOR REVISION -- FHWA APPROVAL NOT REQUIRED.