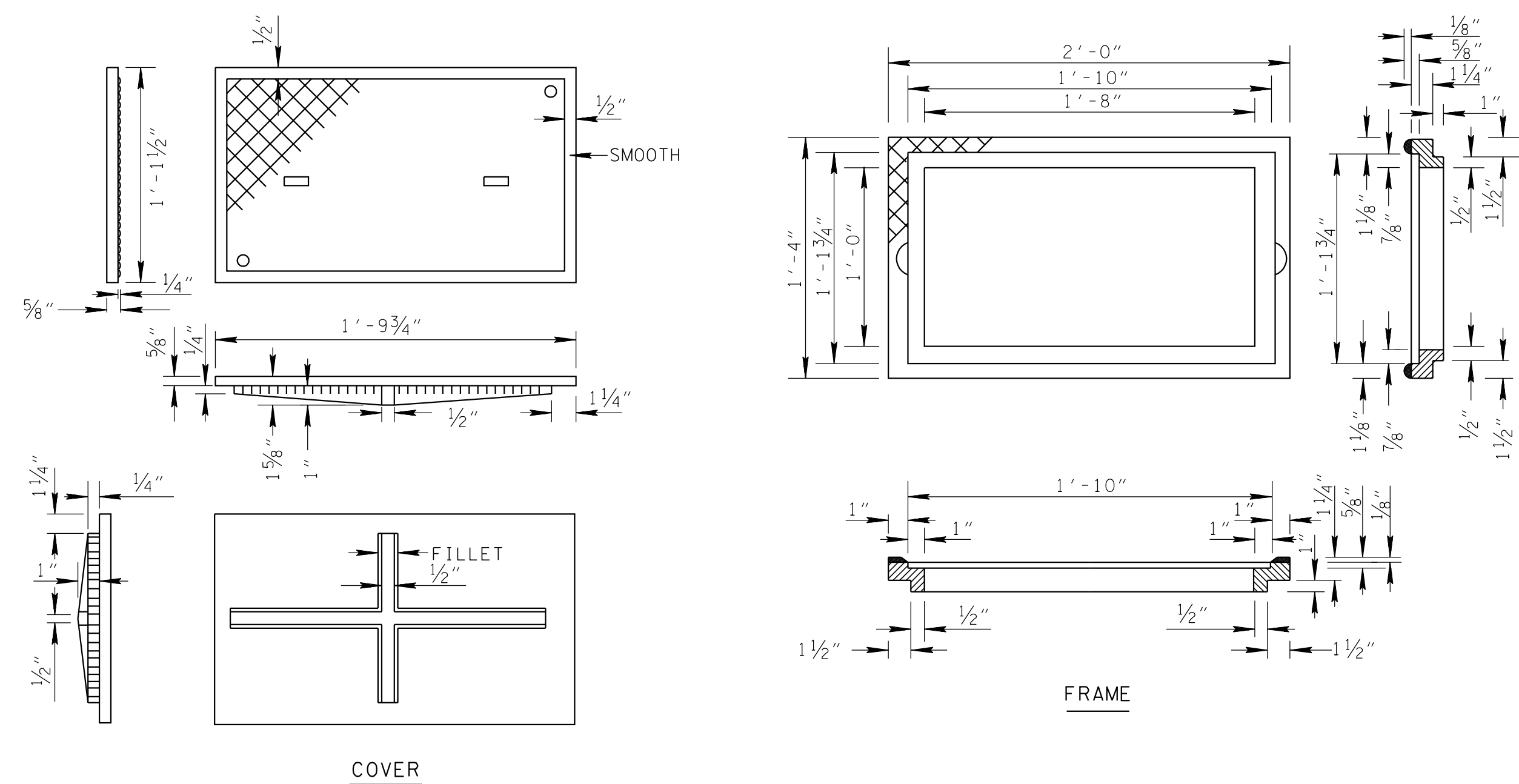


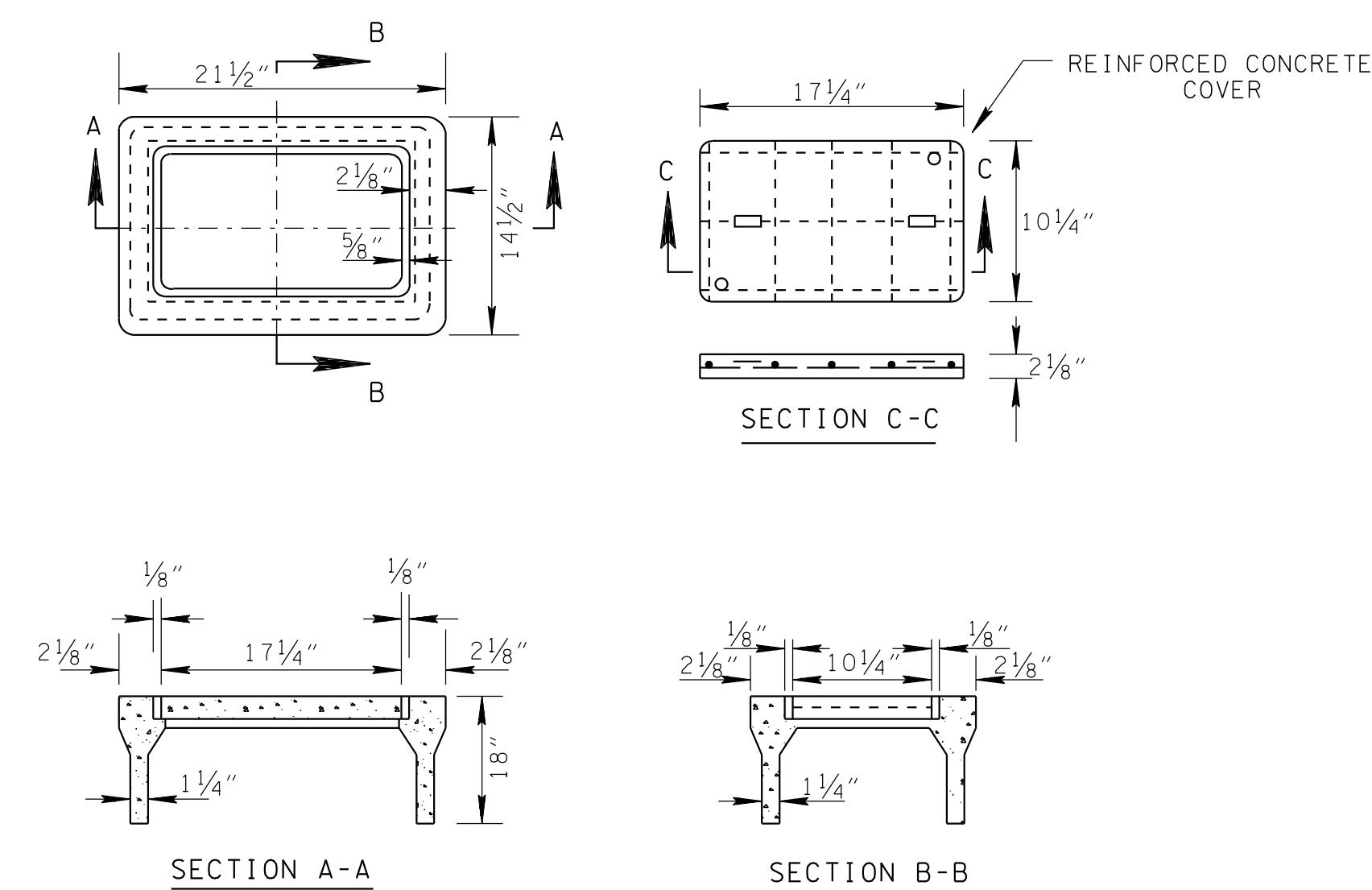
REV. 1-30-86: REDREW SHEET.  
ADDED DETAIL FOR TYPE "B"  
PULL BOX.

REV. 1-30-87: CHANGED AXLE  
LOADING FOR TYPE "C" PULL  
BOX.

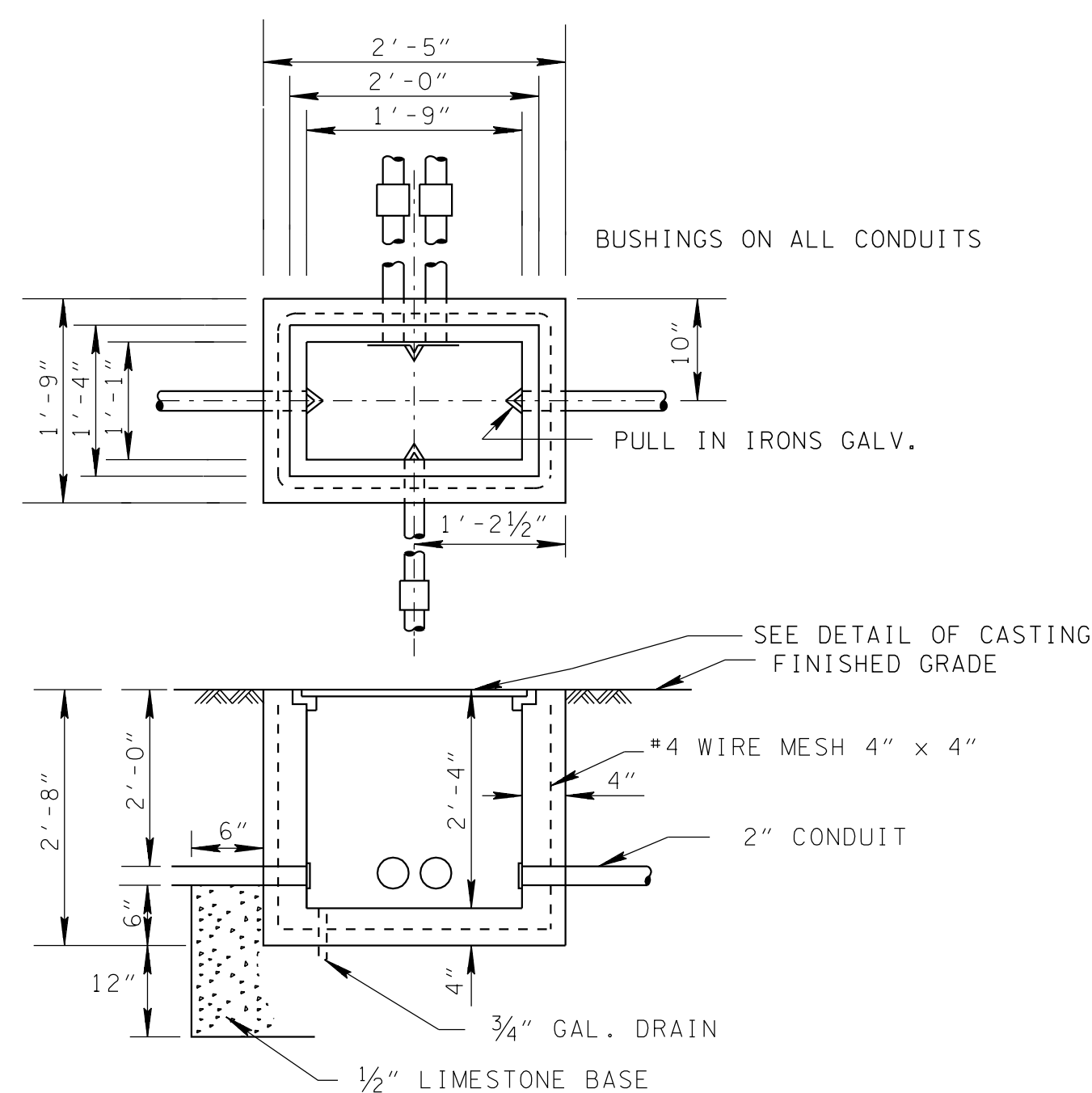
REV. 4-15-96: REDREW SHEET,  
REORGANIZED SHEET AND UPDATED  
TO 1996 STANDARDS.



DETAIL OF PULL BOX CASTING (TYPE "A")



DETAIL OF PULL BOX (TYPE "B")  
CONCRETE

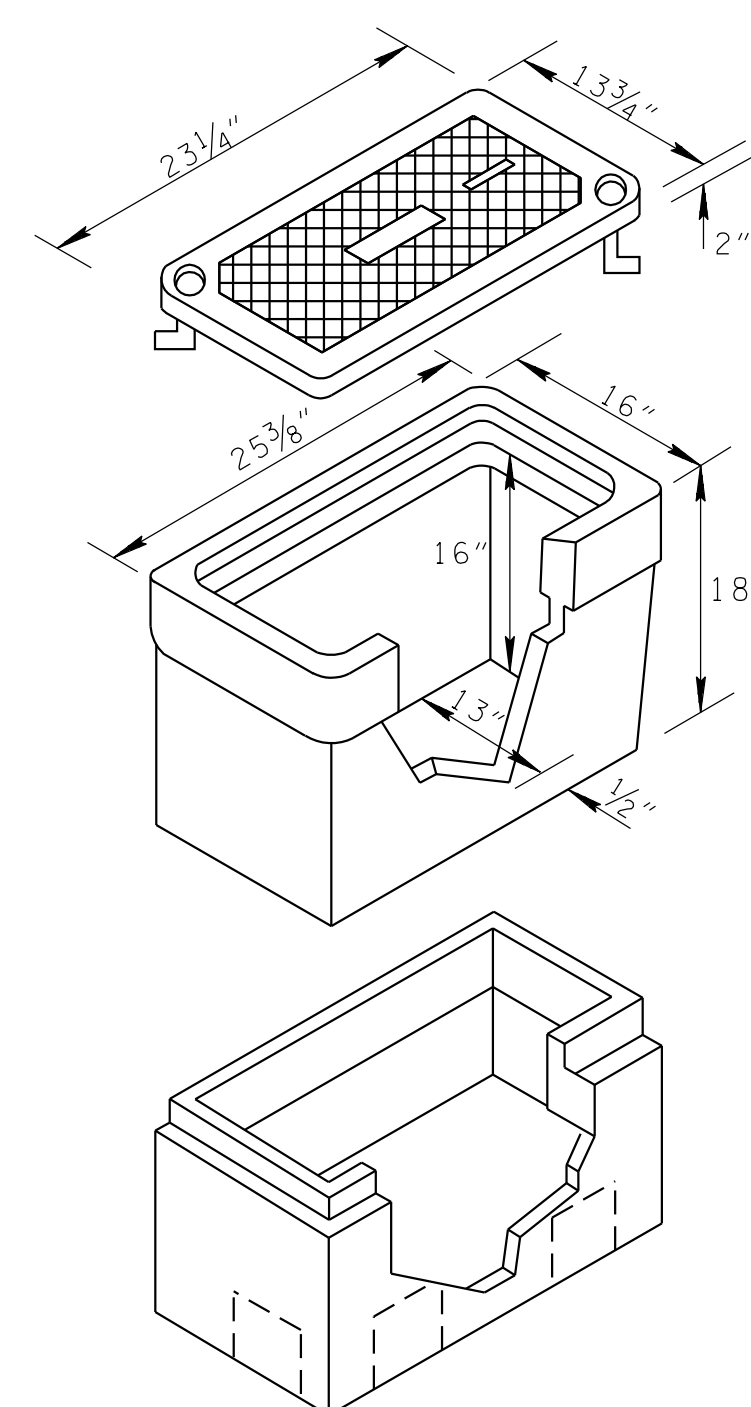


DETAIL OF PULL BOX (TYPE "A")  
REINFORCED CONCRETE

PRECAST PULL BOX COMPOSED  
OF REINFORCED PLASTIC MORTAR  
OR STRUCTURAL FOAM

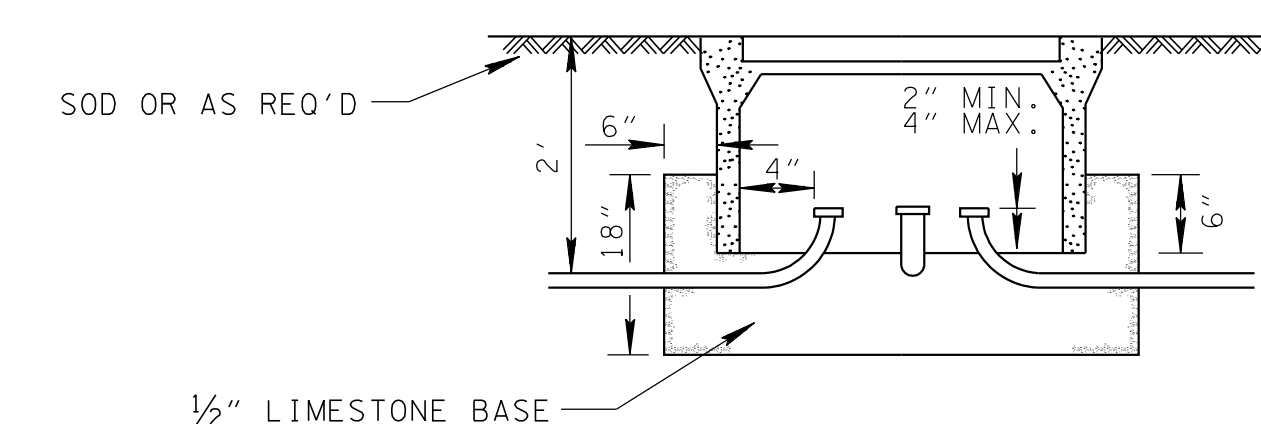
DESIGNED FOR LIGHT VEHICULAR  
TRAFFIC BASED ON 8,000 LBS.  
SINGLE AXLE LOAD OVER ANY  
10" x 10" AREA

BOXES MAY BE NESTED FOR  
DEEP CONDUIT AND FOR MORE  
WORKING ROOM.



DETAIL OF PULL BOX (TYPE "C")

- GENERAL NOTES**
- (A) CONCRETE PULL BOXES SHALL BE CONSTRUCTED OF A MIXTURE OF ONE PART CEMENT, TWO PARTS SAND, AND FOUR PARTS GRAVEL OR 1" CRUSHED STONE, FORMED AND POURED IN PLACE OR PRECAST.
  - (B) CAST IRON AND REINFORCED CONCRETE COVERS FOR CONCRETE PULL BOXES SHALL HAVE TWO GALVANIZED LIFT EYES AND BE SECURED BY TWO 3/8" BRASS "L" BOLTS AND NUTS IN DIAGONAL CORNERS.
  - (C) COVERS FOR ALL PULL BOXES SHALL HAVE A ROUGHENED SURFACE AND BE MARKED "STREET LIGHT" WITH 2" LETTERS CAST INTO COVER.
  - (D) TOP OF PULL BOX SHALL BE 1" ABOVE FINISHED GRADE. EARTH BACKFILL SHALL BE LEVEL WITH TOP AND THOROUGHLY TAMPED TO SLOPE AWAY FROM THE BOX ON ALL SIDES.
  - (E) EACH PULL BOX WALL SHALL HAVE A MINIMUM OF ONE CONDUIT STUB. UNUSED CONDUIT STUBS ARE TO BE CAPPED. SEE PLANS FOR ADDITIONAL CONDUIT STUBS FOR CABLE ENTRANCE.
  - (F) CONDUIT STUB LOCATION AND DIRECTION MAY BE ADJUSTED WHERE PULL BOX IS OFFSET FROM CONDUIT RUN.
  - (G) WHERE BENDS ARE NEEDED TO INSTALL RIGID METALLIC CONDUIT, STANDARD BENDING TOOLS SHALL BE USED.
  - (H) PULL BOX TYPES "B" AND "C" ARE INTENDED AS ALTERNATES FOR AREAS SUBJECTED TO LIGHT VEHICULAR LOADS. PULL BOX TYPE "A" SHALL BE USED IN AREAS SUBJECTED TO HEAVY VEHICULAR LOADS.



PULL BOX INSTALLATION  
(TYPICAL, TYPES B&C)

MINOR REVISION -- FHWA  
APPROVAL NOT REQUIRED.

STATE OF TENNESSEE  
DEPARTMENT OF TRANSPORTATION

STANDARD  
LIGHTING DETAILS  
PULL BOXES