



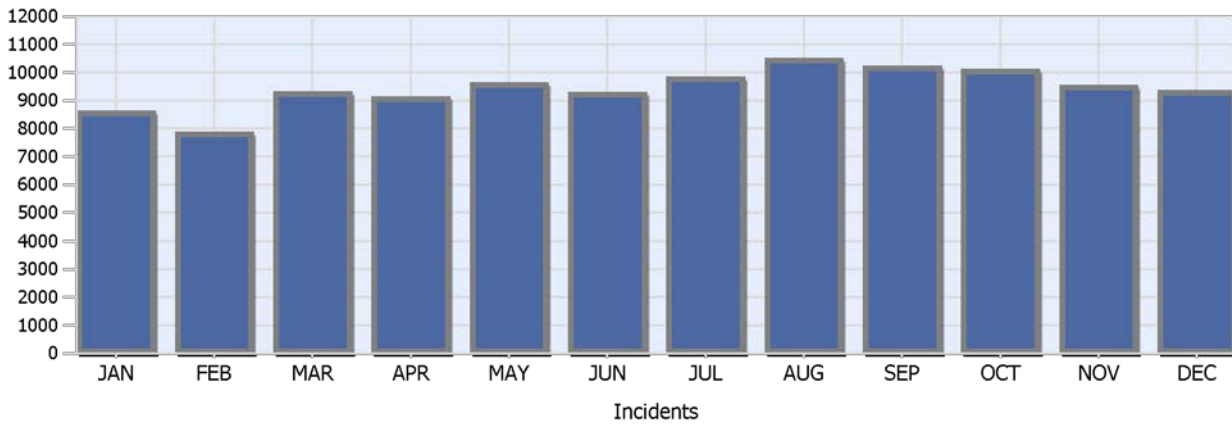
TMC/HELP Annual Report



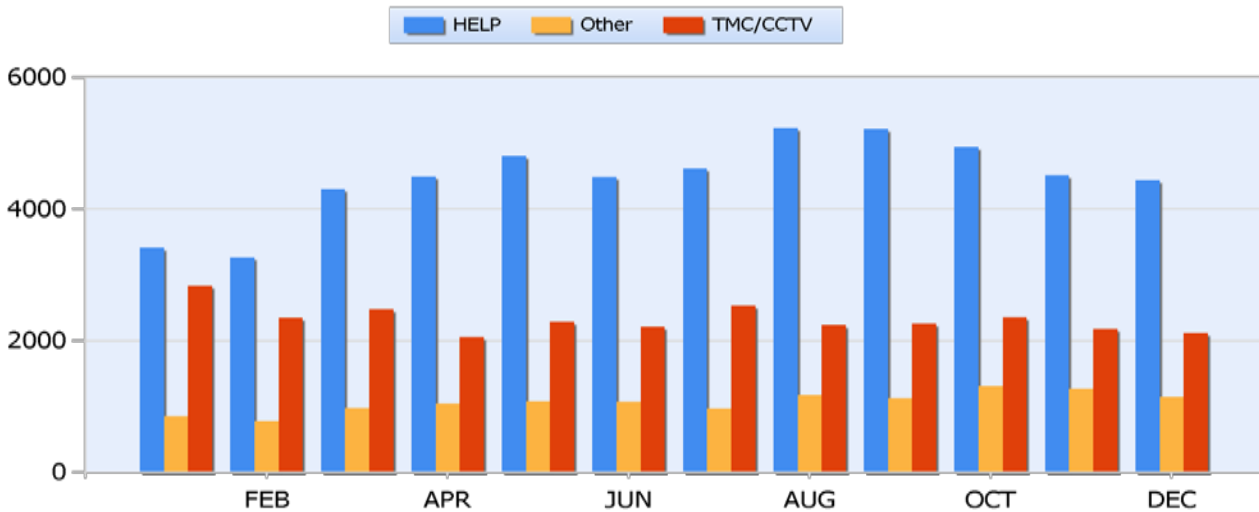
2017

Incidents Managed

110,175



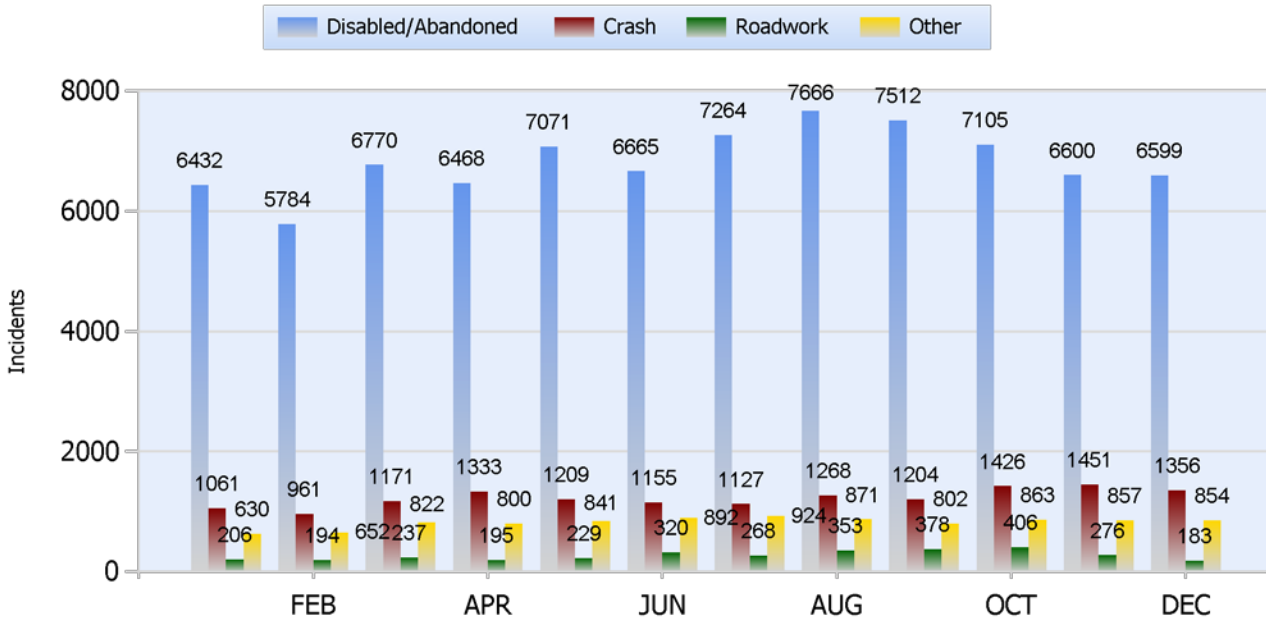
Incidents By Detection Source





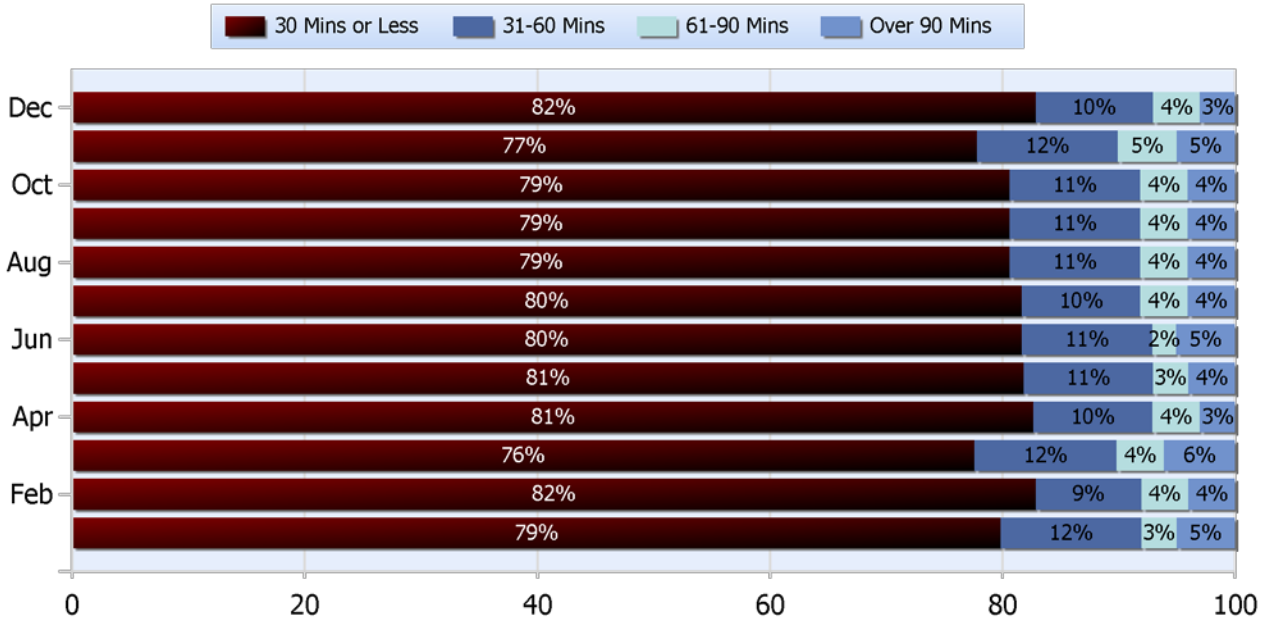
2017 Annual Report

Roadway Incidents



Lane Blockage Clearance Overall

96% <90 Min

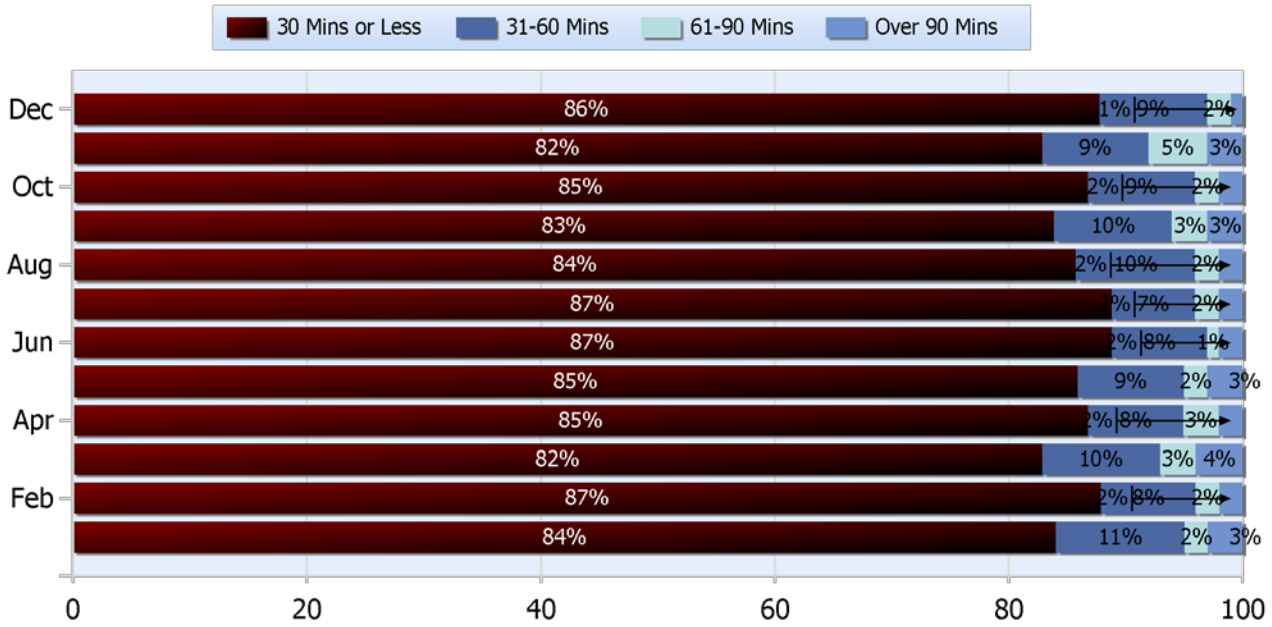




2017 Annual Report

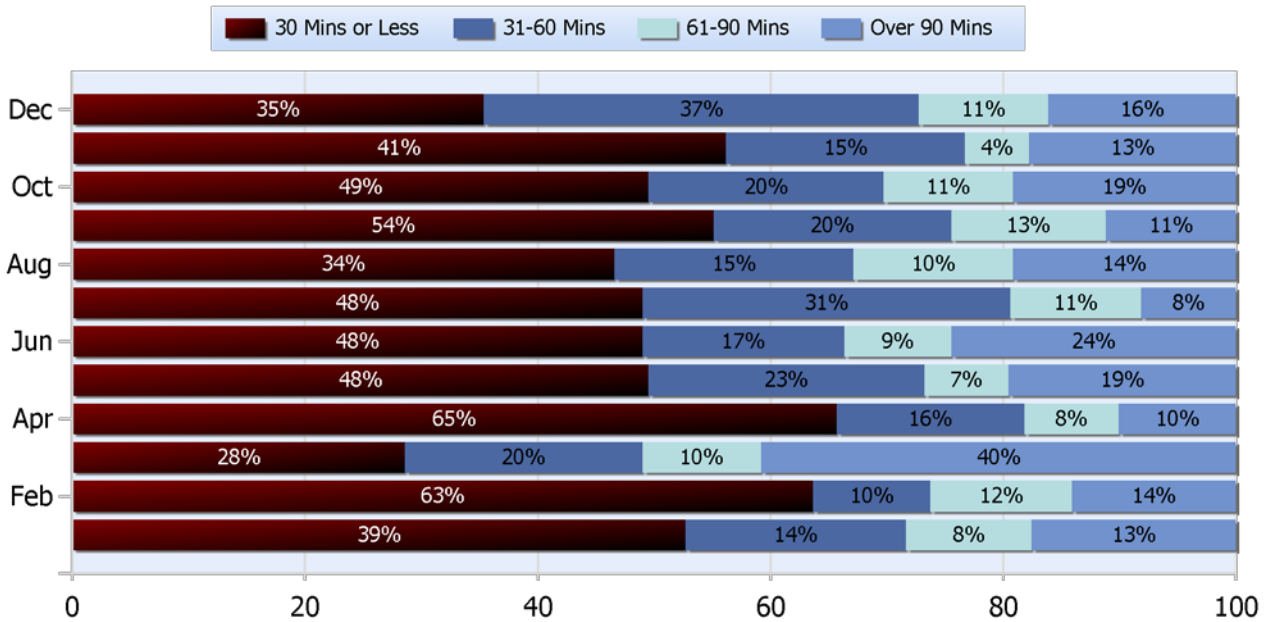
Lane Blockage Clearance Urban

98% <90 Min



Lane Blockage Clearance Rural

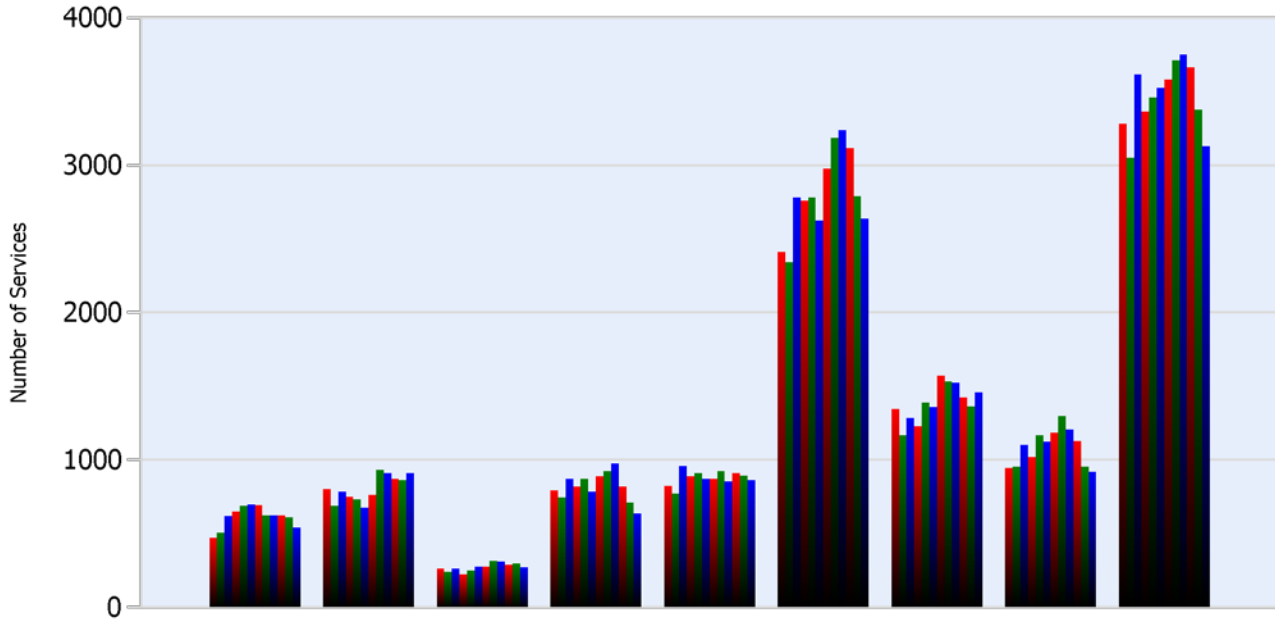
83% <90 Min





2017 Annual Report

Help Services Provided



Month	Debris	Tire	Fuel	Mech	Jump	Traffic Ctrl	Tag	No Service	Other	TOTAL
JAN	471	944	803	792	262	3279	1347	822	2409	11129
FEB	505	953	688	746	240	3051	1166	770	2342	10461
MAR	618	1103	785	870	263	3615	1285	958	2782	21590
APR	650	1019	749	819	226	3363	1229	887	2758	11700
MAY	689	1167	734	870	252	3458	1387	909	2779	12245
JUN	698	1122	676	783	276	3522	1357	872	2622	11928
JUL	692	1185	763	888	276	3582	1572	872	2977	12807
AUG	623	1297	932	923	314	3711	1533	922	3186	13441
SEP	622	1205	911	976	310	3750	1525	854	3238	13391
OCT	622	1130	872	820	287	3664	1425	911	3117	12848
NOV	611	953	865	710	297	3374	1361	895	2790	11856
DEC	542	921	912	637	273	3128	1457	865	2637	11372
2017	7343	12999	9690	9834	3276	41497	16644	10537	33637	145457



2017 Annual Report

DMS Usage

	1 st QTR	2 nd QTR	3 RD QTR	4 TH QTR	2017
Avg % ON Time	28	28.7	30.3	31.5	29.6
Avg Post Time	4.6	3.8	4.7	5.1	4.6
Avg Messages Per Sign	53.9	56.4	52.2	57.5	55
Total Messages Posted	30710	31138	29772	32798	124418

Major Events Affecting Traffic This Year:

- January 01, 2017, Inc # 234067 – 12:52 – 07:11, Multivehicle Crash - I-65 SB at I-24W jct mm 88.
- April 29, 2017, Inc #162783 – 19:17 – 00:51, I-81NB mm 6, Closed, TT fire.
- May 1, 2017, Inc #178920 – 13:41 - 22:44 , I-55 NB ramp to I-240 EB – Ramp Closed, Overturned TT.
- June 02, 2017, Inc # 121482 - 03:38 - 18:40, I-24 WB mm 165, Closed, Fatal Crash at MM 165, 3 TT's, Diversion I-24 WB @ mm 174 & SR-299.
- September 30, 2017, Inc #192047 – 16:27-22:40, I-40 EB at mm 1A.8 - EB Closed - Overturned TT.
- October 9-10, 2017, Inc #267822 - 16:20 –06:53, I-65 SB mm 55, Multi vehicle Crash, Multiple Fatalities – NB and SB traffic used NB lanes.
- November 29, 2017, Inc # 177623 - 03:06-09:51. I-40 WB mm 375.2, Multi Vehicle Crash with fatality. Closed.
- November 05, 2017, Inc #128862 -10:37-14:53 SR111 SB at SR-284. Single vehicle crash with 3 fatalities & 4 airlifted Closed. Detour at SR-284 to Old Hwy 111.



2017 Annual Report

Travel Lane Blockage Events:

Roadway	Incident Count	Incident %
I-140	62	4.15
I-24	3363	33.95
I-240	1314	40.575
I-26	34	2.375
I-275	70	4.725
I-40	4283	31.00625
I-440	402	5.475
I-55	426	13.175
I-640	142	9.625
I-65	1840	24.925
I-75	1229	25.325
I-81	91	6.1
SR153	457	15.825
SR155	510	6.925
SR29	327	11.35
SR385	368	11.6
SR6	39	0.55



This page intentionally blank