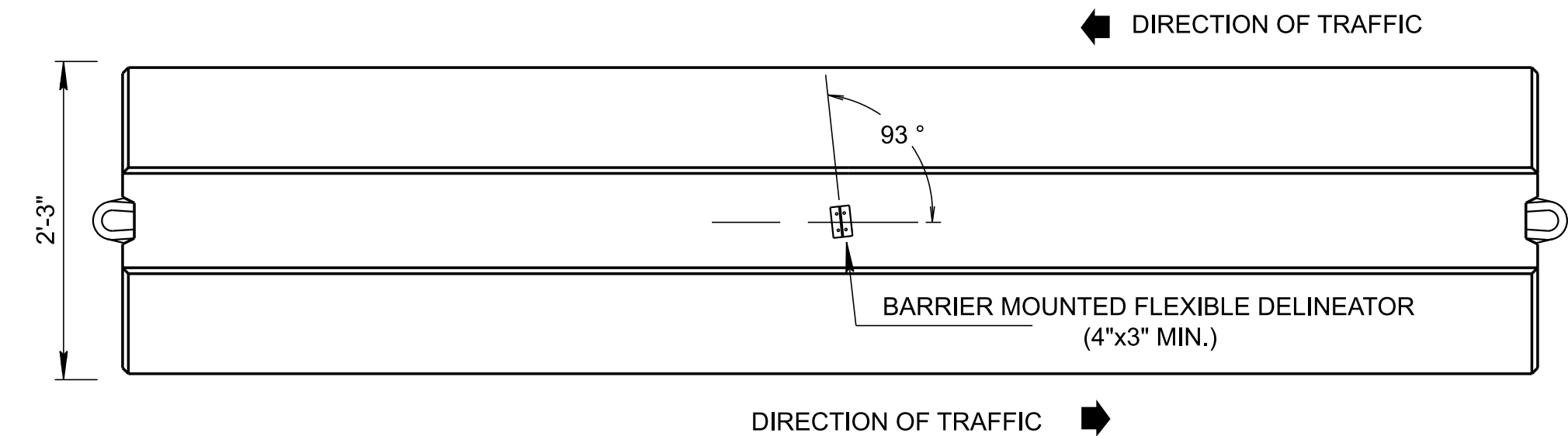
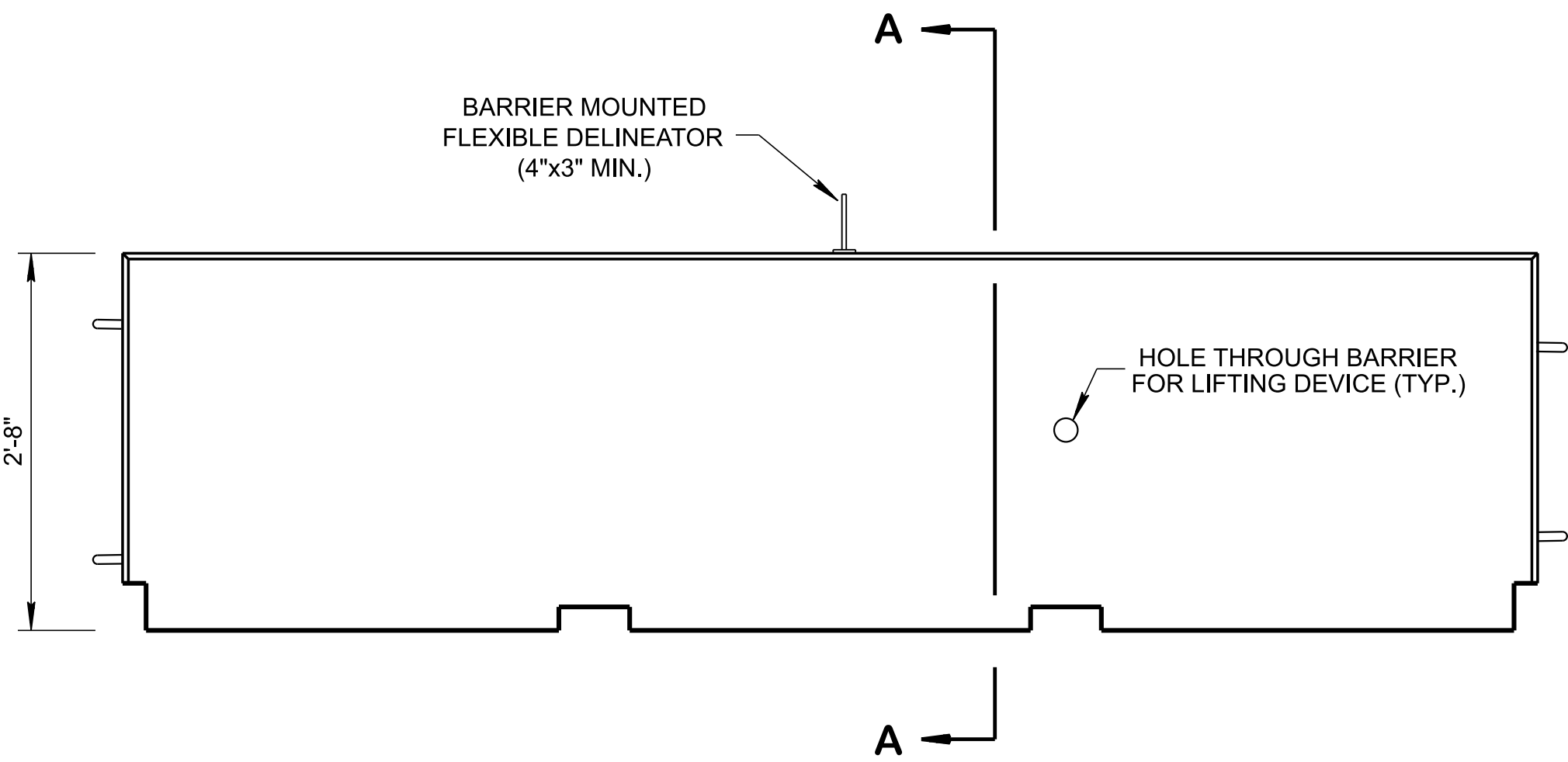


**GROUND MOUNTED
FLEXIBLE DELINEATOR**
SEE CATEGORY I WORK ZONE DEVICES

**SURFACE MOUNTED
FLEXIBLE DELINEATOR**
SEE CATEGORY I WORK ZONE DEVICES
SEE NOTE ①



PLAN VIEW

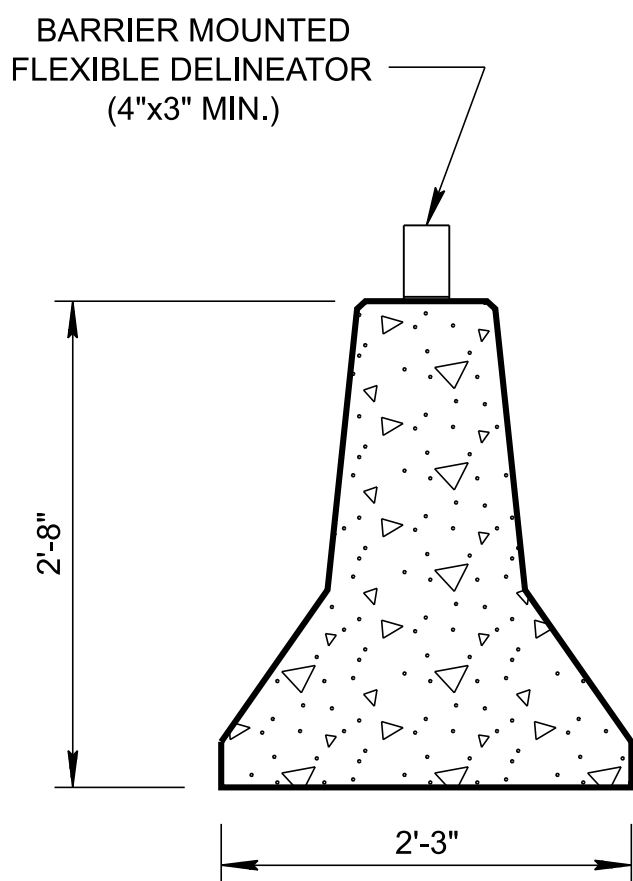


ELEVATION VIEW

**DELINEATOR MOUNTED ON INTERCONNECTED TEMPORARY
PORTABLE CONCRETE BARRIER RAIL**

(SEE T-WZ-PBR1 FOR DETAILS REGARDING
INTERCONNECTED PORTABLE BARRIER RAIL)

SEE CATEGORY III WORK ZONE DEVICES



SECTION A-A

GENERAL NOTES

FLEXIBLE DELINEATORS

- ① THE RETROREFLECTIVE SHEETING SHALL MEET THE REQUIREMENTS OF AASHTO M268, TYPE III OR HIGHER RETROREFLECTION PERFORMANCE LEVEL.
- ② THE RETROREFLECTIVE SHEETING STRIP ON THE DELINEATORS SHALL BE MIN. 9 INCHES IN LENGTH AND SUFFICIENT WIDTH TO PROVIDE A MIN. 3 INCHES WIDE PROFILE FACING APPROACHING TRAFFIC. THE VARIATIONS IN RETROREFLECTIVE SHEETING DIMENSION SHOULD NOT EXCEED $\pm 10\%$.
- ③ THE CONTRACTOR SHALL SELECT MATERIAL FROM THE DEPARTMENT'S QPL.
- ④ THE COLOR OF THE DELINEATOR POST SHALL BE WHITE UNLESS OTHERWISE NOTED ON THE PLANS.
- ⑤ THE COLOR OF THE RETROREFLECTIVE SHEETING SHALL CONFORM TO THE COLOR OF EDGE LINES STIPULATED IN SUBSECTION 3B-6 (PAGE 3B-8 AND 3B-11) OF THE CURRENT EDITION OF THE MANUAL ON UNIFORM TRAFFIC CONTROL DEVICES.
- ⑥ PAYMENT FOR GROUND MOUNTED FLEXIBLE DELINEATORS WILL BE MADE AS FOLLOWS ITEM NO'S.:
- | | | |
|------------|----------------------------------|-------|
| 713-02.14, | FLEXIBLE DELINEATOR (WHITE), | EACH. |
| 713-02.15, | FLEXIBLE DELINEATOR (YELLOW), | EACH. |
| 713-02.16, | FLEXIBLE TYPE II, OBJECT MARKER, | EACH. |
| 713-02.33, | FLEXIBLE DELINEATOR (RED), | EACH. |
- ⑦ PAYMENT FOR SURFACE MOUNTED FLEXIBLE DELINEATORS WILL BE MADE AS FOLLOWS ITEM NO.:
- | | | |
|------------|------------------------------|-------|
| 713-02.30, | FLEXIBLE TUBULAR DELINEATOR, | EACH. |
|------------|------------------------------|-------|
- ⑧ SPACING FOR SURFACE MOUNTED FLEXIBLE DELINEATOR POSTS SHALL BE 20' OR LESS.
- ⑨ SURFACE MOUNTED FLEXIBLE DELINEATORS SHALL BE INSTALLED PER MANUFACTURER'S INSTRUCTIONS.
- ⑩ ONLY PRODUCTS LISTED ON THE DEPARTMENT'S QPL SHALL BE USED.

BARRIER MOUNTED FLEXIBLE DELINEATOR

- ⑪ SPACING FOR DELINEATORS NOT IN A TAPER SHOULD BE A DISTANCE IN FEET APPROXIMATELY EQUAL TO TWO TIMES THE POSTED SPEED LIMIT IN MILES PER HOUR. THE MAXIMUM SPACING IN FEET BETWEEN DELINEATORS IN A TAPER SHOULD BE APPROXIMATELY EQUAL TO THE POSTED SPEED IN MILES PER HOUR, BUT WILL NOT EXCEED ONE HALF THE SPACING OF THE DELINEATORS NOT IN A TAPER.
- ⑫ IF USED FOR TRAFFIC IN TWO DIRECTIONS, TWO SIDED DELINEATORS SHALL BE USED.
- ⑬ THE BARRIER MOUNTED FLEXIBLE DELINEATORS FACE, SUPPORT, INSTALLATION AND HARDWARE ARE TO BE PAID FOR UNDER THE PRICE BID FOR ITEM NO.:
- | | | |
|------------|--------------------------|------|
| 712-04.50, | BARRIER RAIL DELINEATOR, | EACH |
|------------|--------------------------|------|
- ⑭ BARRIER MOUNTED FLEXIBLE DELINEATORS SHALL BE 3" WIDTH MINIMUM X 4" HEIGHT MINIMUM.
- ⑮ ONLY PRODUCTS LISTED ON THE DEPARTMENT'S QPL SHALL BE USED.
- ⑯ BARRIER MOUNTED FLEXIBLE DELINEATORS SHALL BE INSTALLED PER MANUFACTURER'S INSTRUCTIONS.

(Replaced Std Dwg T-PBR-2)

STATE OF TENNESSEE
STANDARD
DRAWING
DEPARTMENT OF TRANSPORTATION

**DETAILS
FOR
WORK ZONE
CHANNELIZATION
DEVICES**

06-28-2019

T-WZ-PBR2