

NOT TO SCALE

RIGHT LANE CLOSURES AT NEAR SIDE OF INTERSECTIONS

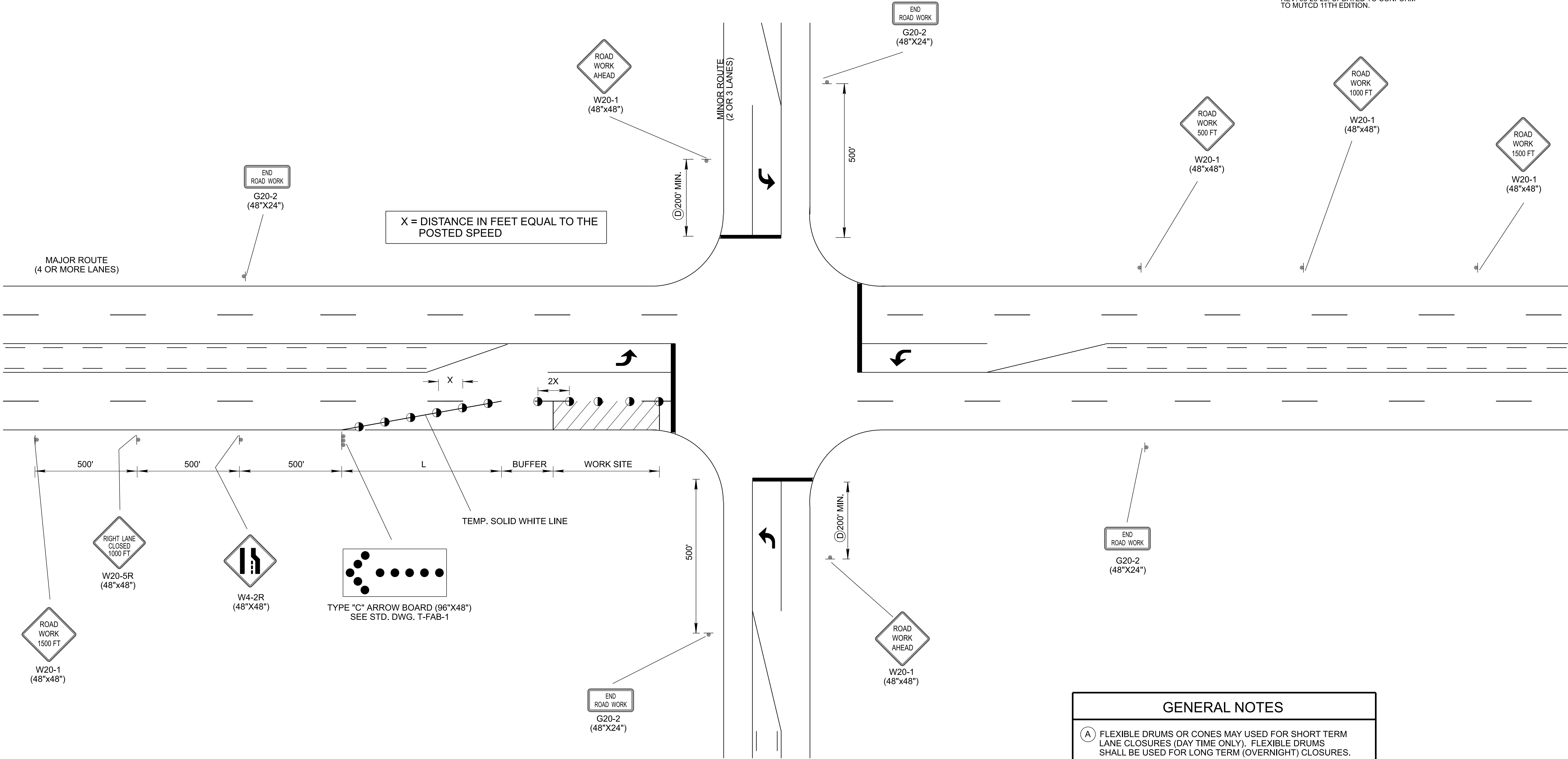
- ☐ REV. 9-1-05: REMOVED TYPE "C" WARNING LIGHTS FROM FLEXIBLE DRUMS IN TAPER. REMOVED TYPE "C" WARNING LIGHT NOTE FROM GENERAL NOTES.

☐ REV. 4-2-12: CHANGED SIGN G20-2A TO G20-2.

☐ REV. 03-05-17: ADDED GENERAL NOTE ①
- ☐ REV. 4-15-99: ADDED GENERAL NOTE ⑤

☐ REV. 12-18-99: MODIFIED HEADING DESCRIPTION AND ELIMINATED OLD GENERAL NOTE ③

☐ REV. 4-15-04: CHANGED W4-2 SIGN. CHANGED GENERAL NOTES ⑥ AND ⑦ TO COMPLY WITH 2003 MUTCD.
- REV. 03-26-25: UPDATED TO CONFORM TO MUTCD 11TH EDITION.



CHANNELIZATION DEVICE LEGEND	
	FLEXIBLE DRUMS
	SIGN SUPPORT
	WORK SITE
FLASHING YELLOW ARROW BOARD (SEE STD. DWG. NO. T-FAB-1, FOR DETAILS AND SPECIFICATIONS)	

COMPUTATION FOR DISTANCE L	
$L = W \times S$	(FOR POSTED SPEEDS OF 45 MPH OR GREATER)
$L = \frac{W \times S^2}{60}$	(FOR POSTED SPEEDS OF 40 MPH OR LESS)
L = TAPER LENGTH IN FEET W = WIDTH OF OFFSET IN FEET S = POSTED SPEED	

GENERAL NOTES	
①	FLEXIBLE DRUMS OR CONES MAY USED FOR SHORT TERM LANE CLOSURES (DAY TIME ONLY). FLEXIBLE DRUMS SHALL BE USED FOR LONG TERM (OVERNIGHT) CLOSURES.
②	SEE TABLE 6B-2 OF PART VI OF THE MANUAL ON UNIFORM TRAFFIC CONTROL DEVICES (MUTCD) FOR RECOMMENDED LENGTHS OF BUFFER SPACE WHICH ARE BASED ON STOPPING SIGHT DISTANCE AS A FUNCTION OF SPEED.
③	SEE TABLE 6B-1 OF PART VI OF THE MANUAL ON UNIFORM TRAFFIC CONTROL DEVICES (MUTCD) FOR GUIDELINES FOR ADVANCE WARNING SIGN SPACING TO BE USED TO DETERMINE DISTANCE FOR "ROAD WORK AHEAD" SIGN TO BE PLACED PRIOR TO INTERSECTION.

☐ FHWA
APPROVAL NOT REQUIRED.

STATE OF TENNESSEE
STANDARD
DRAWING
DEPARTMENT OF TRANSPORTATION

RIGHT LANE
CLOSURES
AT NEAR SIDE
OF INTERSECTIONS

5-27-98T-WZ-40