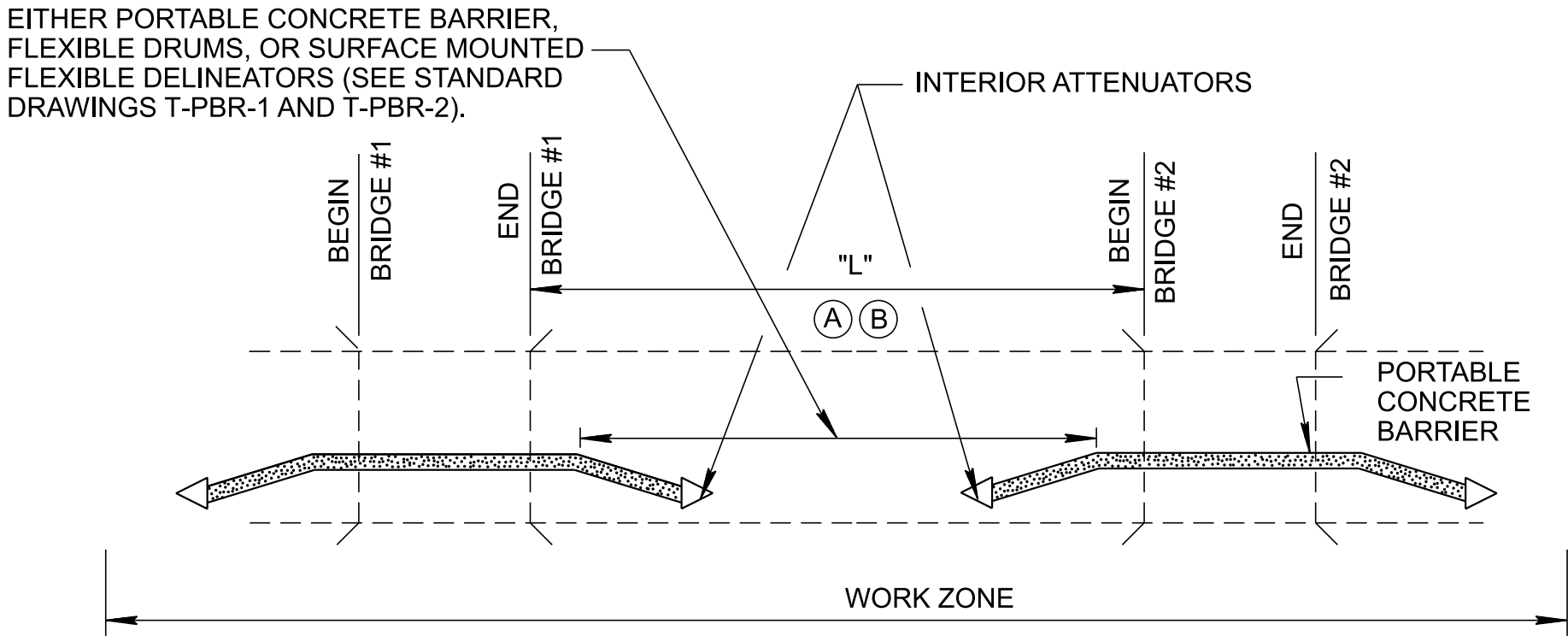
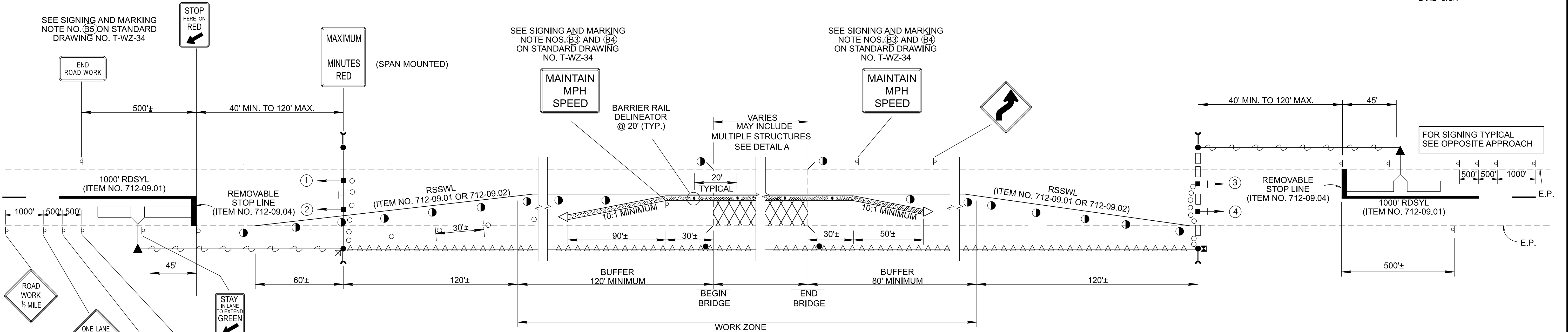


NOT TO SCALE



DETAIL A
SHOWING MULTIPLE STRUCTURES



SIGNAL SEQUENCE CHART		SIGNAL HEAD NO. & DISPLAY			
P H A S E	I N T E R V A L	1	2	3	4
		R Y G	R Y G	R Y G	R Y G
		SIGNAL HEAD NO. & SEQUENCE			
		1	2	3	4
1	R/W	G	G	R	R
	2	Y	Y	R	R
	3	DIRECT CLEARANCE PROHIBITED			
	4	DIRECT CLEARANCE PROHIBITED			
2	R/W	R	R	R	R
	3	R	R	R	R
	4	DIRECT CLEARANCE PROHIBITED			
	1	R	R	R	R
3	R/W	R	R	G	G
	4	R	R	Y	Y
	1	DIRECT CLEARANCE PROHIBITED			
	2	DIRECT CLEARANCE PROHIBITED			
4	R/W	R	R	R	R
	1	R	R	R	R
	2	DIRECT CLEARANCE PROHIBITED			
	3	R	R	R	R
** FLASH		R	R	R	R

GENERAL NOTES

(A) IF DISTANCE "L" IS 250' OR LESS, PORTABLE CONCRETE BARRIER SHALL BE CONTINUOUS.

(B) IF DISTANCE "L" IS GREATER THAN 250' THE CONTRACTOR MAY USE CONTINUOUS PORTABLE CONCRETE BARRIER IN LIEU OF THE INTERIOR ATTENUATORS SHOWN IN THIS DETAIL. IF INTERIOR ATTENUATORS ARE USED, FLEXIBLE DRUMS OR SURFACE MOUNTED FLEXIBLE DELINEATORS SHALL BE USED TO MAINTAIN ONE LANE OF TRAFFIC.

(C) SEE THE MANUAL ON UNIFORM TRAFFIC CONTROL DEVICES (MUTCD) FOR BUFFER LENGTH GUIDANCE.

(D) 7 OR 12 CONDUCTOR SIGNAL CABLE FROM DETECTOR CABINET TO CONTROLLER MAY BE RUN OVERHEAD (USING WOOD POLES AND MESSENGER WIRE), UNDERGROUND (DIRECT BURIED) OR ANY METHOD APPROVED BY THE ENGINEER.

(E) BARRIER RAIL DELINEATORS (ITEM NO. 712-04.50) SHALL BE USED ON PORTABLE BARRIER RAIL. REFER TO THE QUALIFIED PRODUCT LIST FOR APPROVED BARRIER RAIL DELINEATORS. DIFFERENT TYPES OF BARRIER RAIL DELINEATORS SHOULD NOT BE MIXED IN THE SAME LINE.

LEGEND

☒ FOUR OR EIGHT PHASE POLE MOUNTED CONTROLLER

▬ 6' X 45' DETECTION ZONE

▬ 12 INCH SIGNAL HEAD WITH BACKPLATE ON SPANWIRE

▬ GUYING DEVICE VERTICAL ANCHOR (7/16" DIAMETER)

▬ SHIELDED DETECTOR CABLE ON SPAN WIRE

● WOOD POLE

△△△ 7 CONDUCTOR (FOUR PHASE) OR 12 CONDUCTOR (EIGHT PHASE) FOR LOOPS & SIGNALS

○○○ 5 CONDUCTOR SIGNAL CABLE

● FLEXIBLE DRUMS

▬ BARRIER RAIL DELINEATOR (ITEM NO. 712-04.50, PER EACH)

▬ PORTABLE CONCRETE BARRIER

RSSWL REMOVABLE PAVEMENT MARKING (SINGLE SOLID WHITE LINE)

RDSYL REMOVABLE PAVEMENT MARKING (DOUBLE SOLID YELLOW LINE)

E.P. EDGE OF PAVEMENT

☒ DETECTOR AMPLIFIER CABINET

▲ WATERPROOF SPLICE

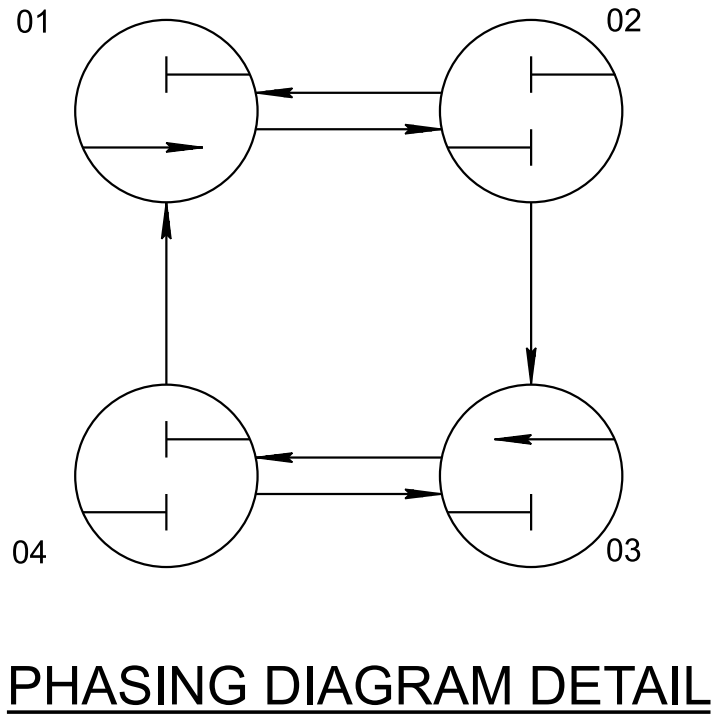
▬ SHIELDED DETECTOR CABLE (DIRECT BURIED)

L DISTANCE

◁ ATTENUATOR

SIGNAL HEAD DETAIL

ALL SIGNAL HEADS SHALL HAVE BACKPLATES AND TETHER WIRES.



PLACEMENT OF SIGNAL HEADS SHALL BE IN ACCORDANCE WITH THE MANUAL ON UNIFORM TRAFFIC CONTROL DEVICES (CURRENT EDITION).

** SEE SIGNAL OPERATION NOTES ON STANDARD DRAWING NO. T-WZ-34 FOR TIMES WHEN YELLOW FLASH IS USED.

- REV. 5-27-98: CHANGED DRAWING NO. FROM T-CP-1 TO T-WZ-32. MODIFIED LEGEND.
- REV. 4-15-99: MODIFIED LEGEND.
- REV. 12-18-99: ADDED SECOND NOTE TO PORTABLE CONCRETE BARRIER NOTES.
- REV. 9-1-05: REMOVED TYPE "C" WARNING LIGHTS FROM FLEXIBLE DRUMS IN TAPER.
- REV. 3-3-06: REPLACED VERTICAL PANEL WITH BARRIER RAIL DELINEATORS. ADDED GENERAL NOTES (F).
- REV. 10-29-13: CHANGED PAY ITEM FOR BARRIER RAIL DELINEATORS.
- REV. 03-05-17: ADDED ITEM NO. 712-09.01 OR 712-09.02 AND 712-09.04.
- REV. 03-26-25: UPDATED TO CONFORM TO MUTCD 11TH EDITION.
- REV. 9-17-82: CLARIFIED WORK ZONE. ADDED DETAIL "A". REMOVED SIGNS AT RIGHT END.
- REV. 10-7-82: ADDED 1" CONDUIT & 7/16" DIAMETER GUY.
- REV. 3-22-85: GENERAL REVISIONS.
- REV. 10-24-86: GENERAL REVISIONS.
- REV. 5-27-91: REDREW SHEET AND REORGANIZED SHEET.
- REV. 1-19-92: GENERAL REVISION.
- REV. 4-1-92: CHANGED SECOND NOTE ON DETAIL A DELETING USE OF TYPE C WARNING LIGHTS.
- REV. 5-16-94: CHANGED CONSTRUCTION SIGNS TO CONFORM TO REVISED PART VI, M.U.T.C.D., DATED 9-3-93.
- REV. 9-5-94: CHANGED G20-2 TO G20-2A CONSTRUCTION SIGN. ADDED W1-4aR CONSTRUCTION SIGN.
- REV. 12-1-95: ADDED "STAY IN LANE" SIGN

FHWA
APPROVAL NOT REQUIRED

CROSS REFERENCE DRAWINGS FOR THIS SHEET: T-WZ-33, T-WZ-34 AND T-WZ-35.

STATE OF TENNESSEE
STANDARD DRAWING
DEPARTMENT OF TRANSPORTATION

TRAFFIC CONTROL PLAN
SIGNAL LAYOUT FOR
TRAFFIC SIGNAL AT TWO
LANE BRIDGE
RECONSTRUCTION SITE

5-27-98 T-WZ-32