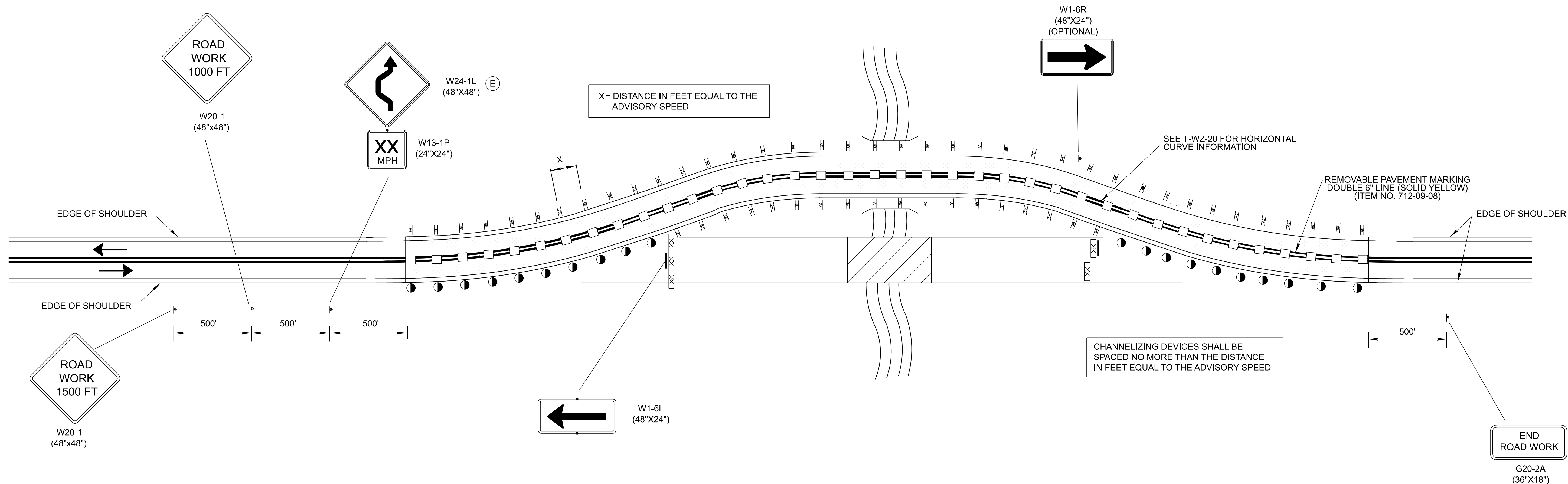


3/26/2025 11:31:19 AM H:\26\26180 - Tennessee DOT Road Design Manual\004 - TDOT Traffic Design Updates\design\CAD\Work Zone (WZ)\TWZ30.dgn

TRAFFIC CONTROL FOR 2-LANE, 2-WAY DIVERSION DETAIL
(FOR 40 MILES PER HOUR OR LESS)

- REV. 4-15-99: ADDED GENERAL NOTE (E).
- REV. 12-18-99: MODIFIED GENERAL NOTE (A).
- REV. 7-29-03: CHANGED SIZE OF END ROAD WORK CONSTRUCTION FROM 48" X 24" TO 36" X 18".
- REV. 4-15-04: CHANGED W13-1 SIGN.
- REV. 9-1-05: REMOVED TYPE "C" WARNING LIGHTS FROM FLEXIBLE DRUMS IN TAPER. REMOVED TYPE "C" WARNING LIGHT NOTE FROM GENERAL NOTES.

REV. 03-26-25: UPDATED TO CONFORM TO MUTCD 11TH EDITION.



GENERAL NOTES

- (A) SIGNS SHOWN ARE FOR ONE DIRECTION OF TRAVEL ONLY.
- (B) THIS STANDARD FOR 2-LANE, 2-WAY DIVERSION IS TO BE USED FOR DESIGN SPEEDS LESS THAN OR EQUAL TO 40 MPH.
- (C) DESIGN SPEED OF DIVERSION SHOULD BE NO MORE THAN 10 MPH BELOW THE POSTED SPEED LIMIT. SEE PLANS FOR HORIZONTAL AND VERTICAL GEOMETRIC DETAILS OF DIVERSION.
- (D) SIGNS MOUNTED TO TYPE III BARRICADES SHALL BE MOUNTED ABOVE THE BARRICADE.
- (E) IF THE TANGENT DISTANCE ALONG THE TEMPORARY DIVERSION IS MORE THAN 600 FEET, A REVERSE CURVE SIGN, LEFT FIRST, SHOULD BE USED INSTEAD OF THE DOUBLE REVERSE CURVE SIGN, AND A SECOND REVERSE CURVE SIGN, RIGHT FIRST, SHOULD BE PLACED IN ADVANCE OF THE SECOND REVERSE CURVE BACK TO THE ORIGINAL ALIGNMENT.

CHANNELIZATION DEVICE LEGEND

- SIGN SUPPORT
- BARRIER RAIL DELINEATOR
- DIRECTION OF TRAFFIC
- WORK SITE
- TYPE III BARRICADE WITH SIGNS ATTACHED
- RAISED PAVEMENT MARKER (SEE APPROVED QUALIFIED PRODUCT LIST) - OPTIONAL

FHWA
APPROVAL NOT REQUIRED

STATE OF TENNESSEE
STANDARD
DRAWING
DEPARTMENT OF TRANSPORTATION

TRAFFIC CONTROL
2-LANE, 2-WAY
DIVERSION
(40 MPH OR LESS)

5-27-98

T-WZ-30

NOT TO SCALE