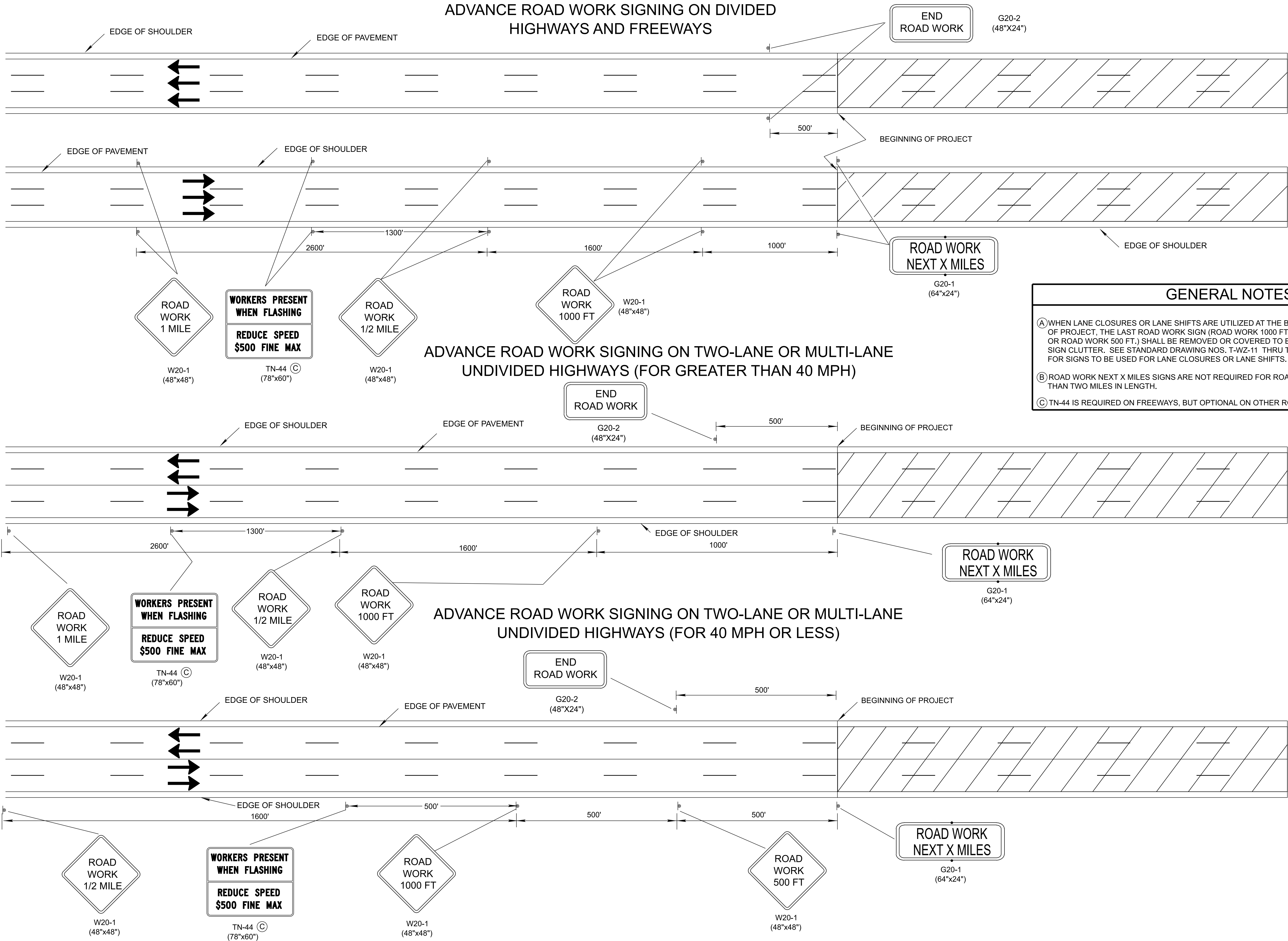


3/25/2025 6:08:49 PM  
H:\26\26180 - Tennessee DOT Road Design Manual\004 - T-DOT Traffic Design Updates\design\CAD\Work Zone (WZ)\TWZ10.dgn

NOT TO SCALE



- REV. 12-18-99: DELETED OLD GENERAL NOTE (A) AND MODIFIED LAST GENERAL NOTE.
- REV. 1-19-01: REMOVED "BEE ALERT ARRIVE UNHURT" SIGN CURRENTLY IN ADVANCE OF OTHER WARNING SIGNS.
- REV. 4-2-12: CHANGED SIGN G20-2A TO G20-2.
- REV. 03-26-25: UPDATED TO CONFORM TO MUTCD 11TH EDITION.

GENERAL NOTES

(A) WHEN LANE CLOSURES OR LANE SHIFTS ARE UTILIZED AT THE BEGINNING OF PROJECT, THE LAST ROAD WORK SIGN (ROAD WORK 1000 FT. OR ROAD WORK 500 FT.) SHALL BE REMOVED OR COVERED TO ELIMINATE SIGN CLUTTER. SEE STANDARD DRAWING NOS. T-WZ-11 THRU T-WZ-19 FOR SIGNS TO BE USED FOR LANE CLOSURES OR LANE SHIFTS.

(B) ROAD WORK NEXT X MILES SIGNS ARE NOT REQUIRED FOR ROAD WORK LESS THAN TWO MILES IN LENGTH.

(C) TN-44 IS REQUIRED ON FREEWAYS, BUT OPTIONAL ON OTHER ROADWAYS.

FHWA

APPROVAL NOT REQUIRED

STATE OF TENNESSEE

STANDARD DRAWING

DEPARTMENT OF TRANSPORTATION

ADVANCE ROAD WORK SIGNING ON HIGHWAYS AND FREEWAYS

5-27-98

T-WZ-10