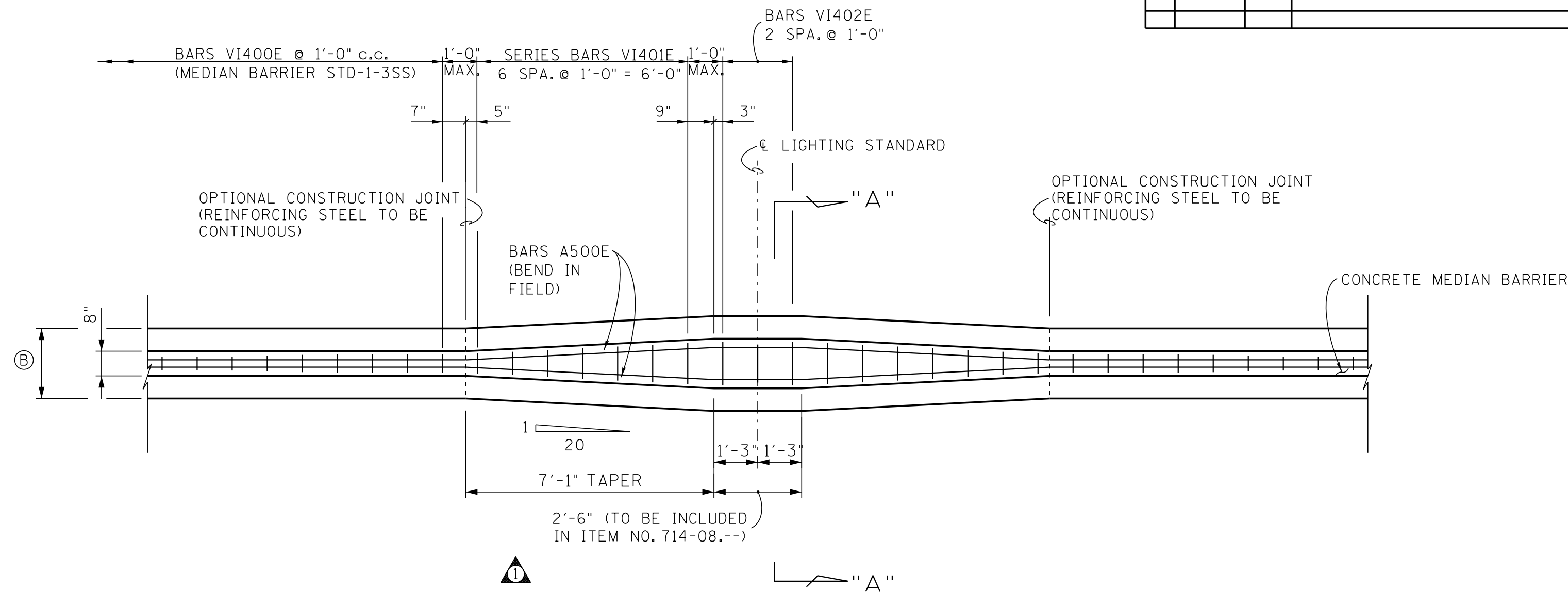
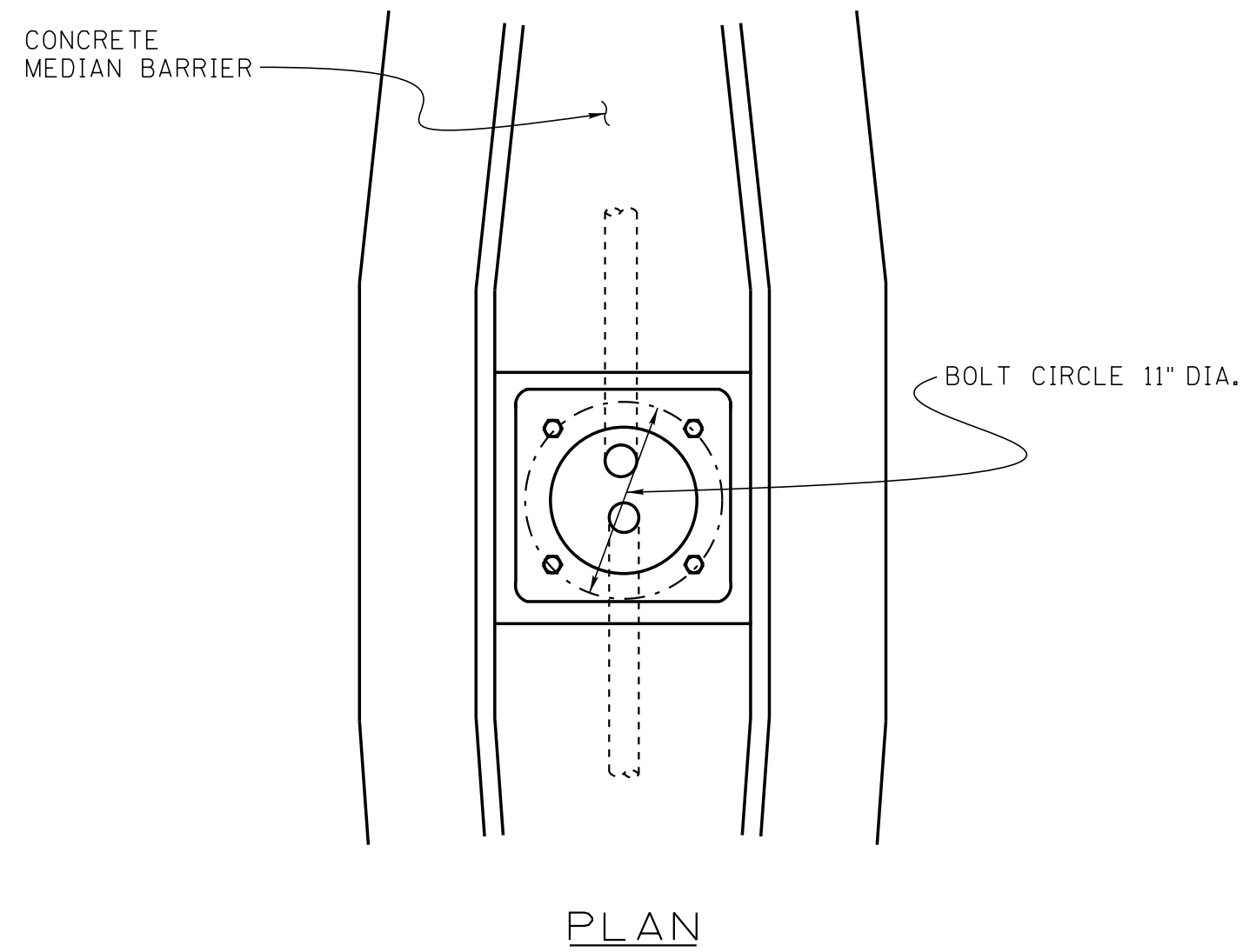


CONST. NO.			
PROJECT NO.	YEAR	SHEET NO.	
REVISIONS			
NO.	DATE	BY	BRIEF DESCRIPTION
1	6-15-20	JHW	REVISED DIMENSION TABLE, PLAN VIEW, SECTION "A"-A", NOTES AND TAPER LENGTH

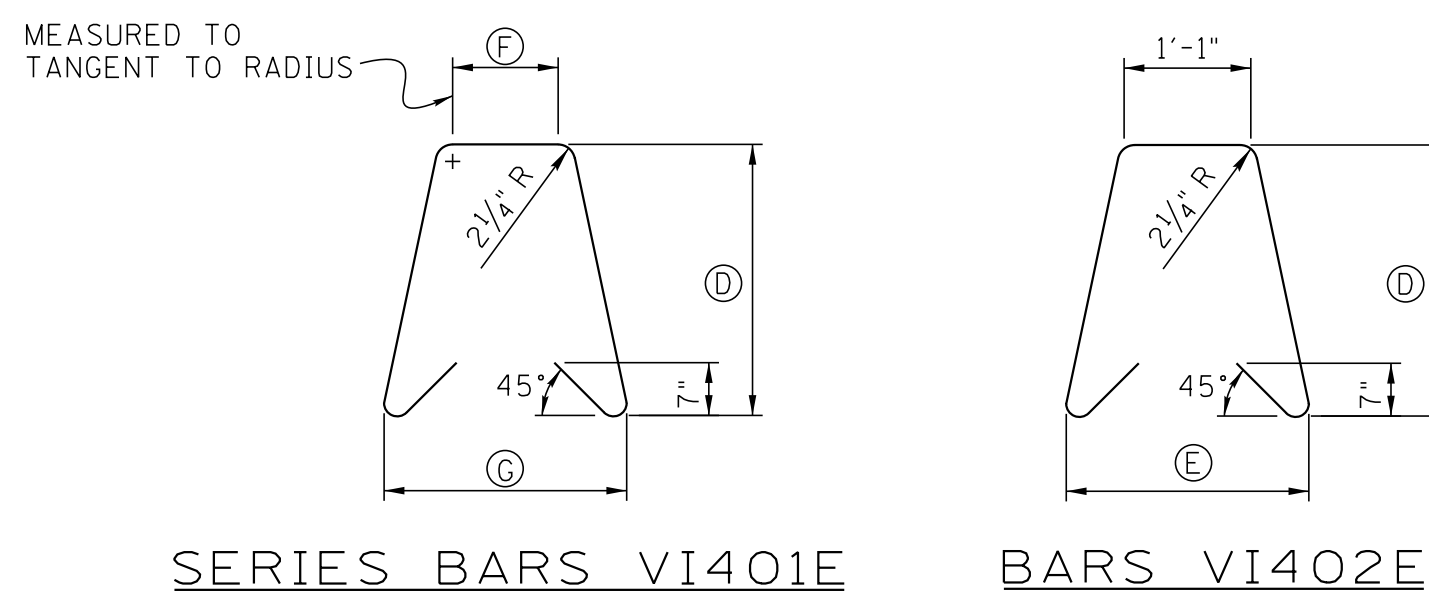
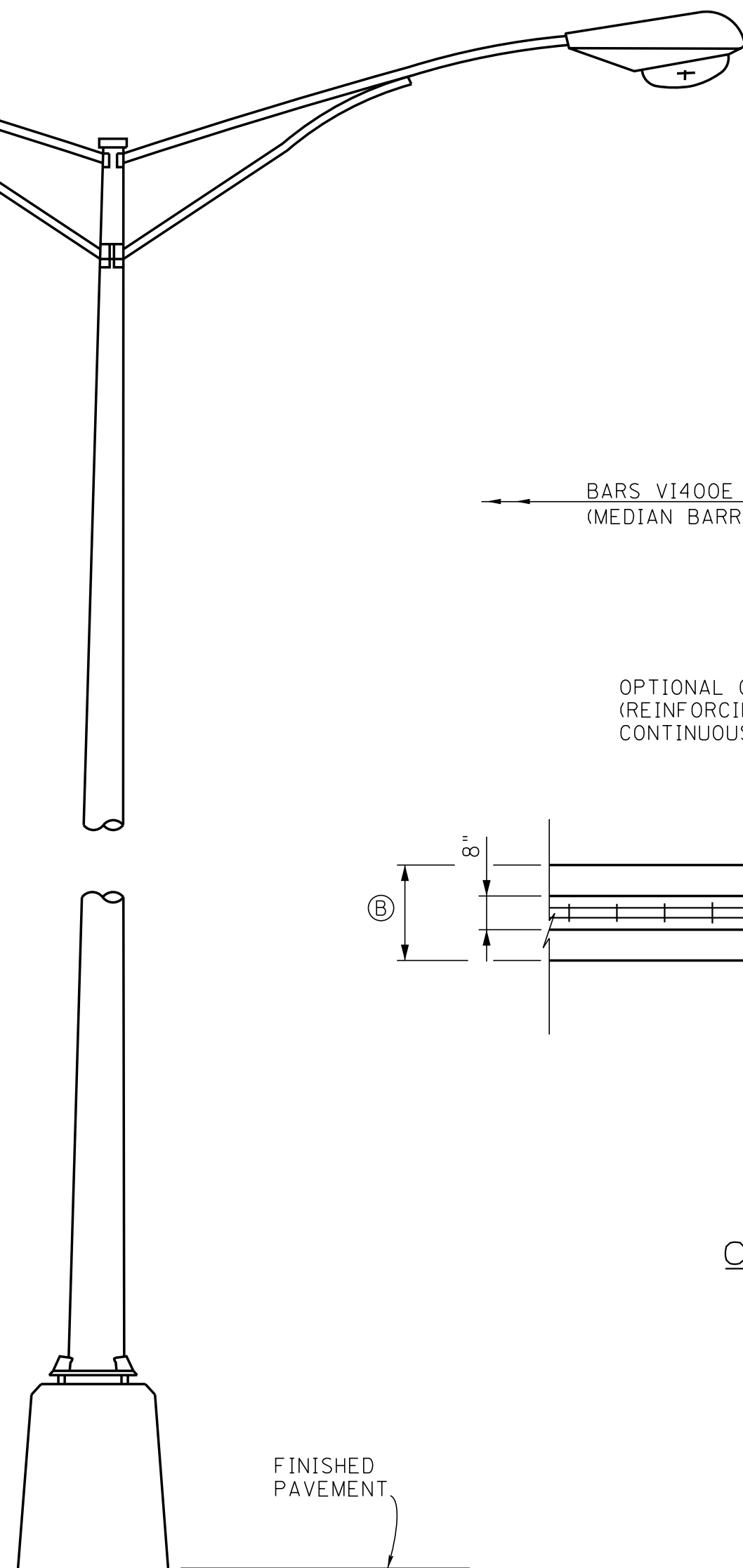


CONCRETE MEDIAN BARRIER TRANSITION AT PROPOSED LIGHTING STANDARD -PLAN-

NOTE: THE REINFORCING STEEL FOR MEDIAN BARRIER STANDARD LIGHT SUPPORT IS TO BE THE SAME SIZE, SPACING AND LOCATION AS DETAILED FOR MEDIAN BARRIER IN NON-FLARED SECTIONS UNLESS NOTED OTHERWISE.

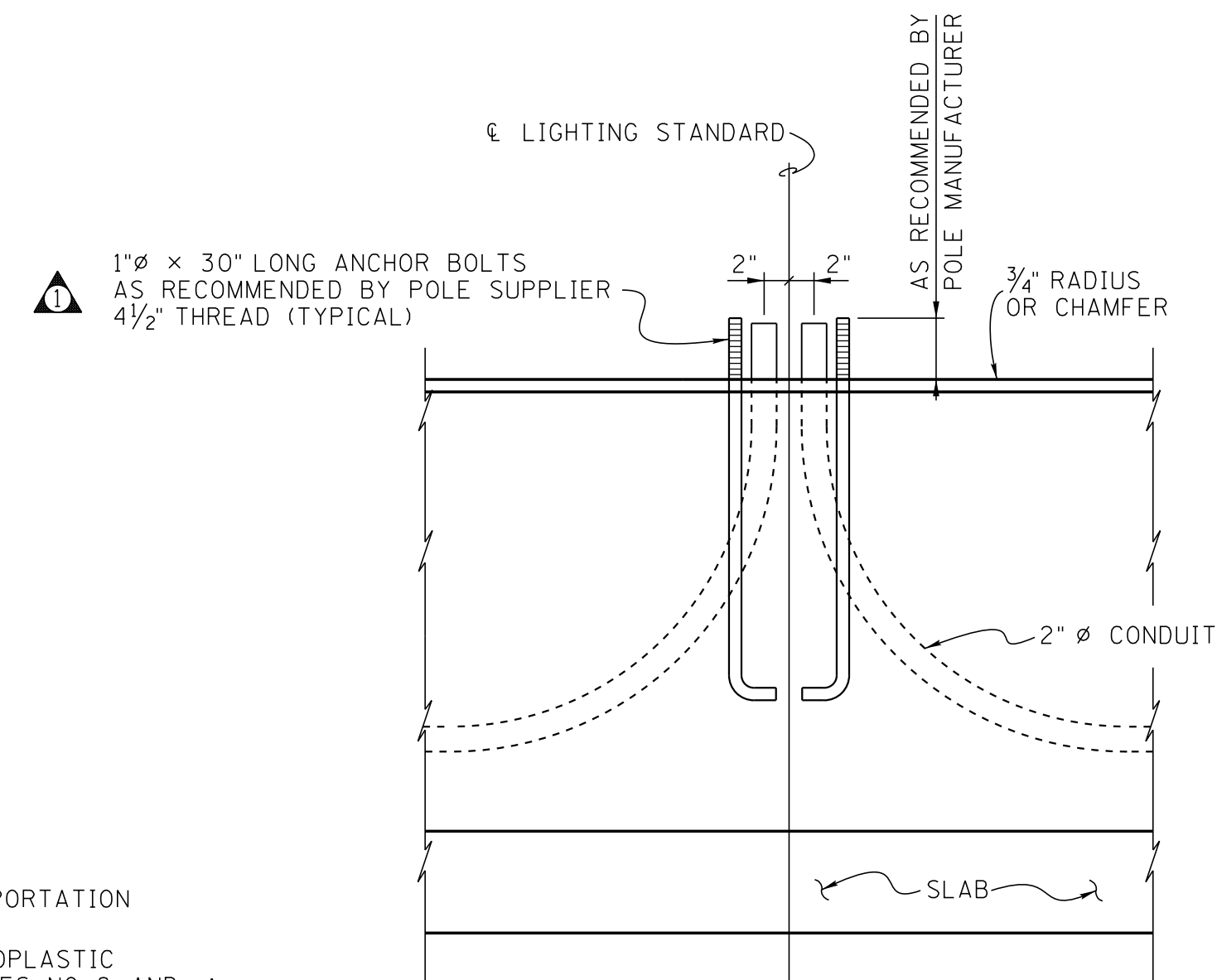
BARRIER HEIGHT (IN.)	DIMENSIONS (IN.)						
	A	B	C	D	E	F	G
36	36	21 3/4	29 3/4	30	24 1/2	*	F + 11 1/2
51	51	27 1/2	36	45	30 5/8	*	F + 17 5/8

\* DIMENSION F VARIES FROM 0" TO 8 5/8" IN INC. OF 1/4"



GENERAL NOTES:

- STANDARD ROAD AND BRIDGE SPECIFICATIONS OF THE TENNESSEE DEPARTMENT OF TRANSPORTATION (LATEST EDITION.)
- CONDUCTORS SHALL BE COPPER CONDUCTOR WITH 600 VOLT TYPE THWN-MTW, 75°C THERMOPLASTIC INSULATION WITH NYLON JACKET. CONDUCTORS NO.10 AND SMALLER SHALL BE SOLID, SIZES NO. 8 AND LARGER SHALL BE STRANDED. ALL WIRING SHALL BE RUN IN SCHEDULE 40 PVC CONDUITS.
- THIS CONSTRUCTION SHALL COMPLY WITH THE LATEST REVISIONS TO THE NATIONAL ELECTRICAL CODE NFPA NO. 70, AND THE NATIONAL ELECTRICAL SAFETY CODE.
- ALL INCIDENTAL EQUIPMENT AND MATERIAL REQUIRED FOR THE SUCCESSFUL EXECUTION OF THIS WORK SHALL BE FURNISHED WHETHER SPECIFICALLY NOTED OR NOT.
- A SEPARATE GROUNDING CONDUCTOR SHALL BE RUN IN EACH RACEWAY AND BONDED TO EACH POLE, METAL CABINET OR BOX. GROUNDING CONDUCTORS SHALL BE NO. 8 COPPER CONDUCTOR, WITH 600V TYPE TW INSULATION, GREEN COLOR.
- PULL WIRES SHALL BE RUN IN EACH RACEWAY WHEN THE STANDARDS ARE TO BE INSTALLED UNDER A FUTURE CONTRACT.



STATE OF TENNESSEE  
DEPARTMENT OF TRANSPORTATION  
SINGLE SLOPE  
MEDIAN BARRIER  
STANDARD LIGHT SUPPORT  
DETAILS  
2007

CORRECT *Edward P. Wasserman*  
ENGINEER OF STRUCTURES

DESIGNED BY R.L. CRAWFORD DATE 3-07  
DRAWN BY K.L. FRANKENFIELD DATE 3-07  
SUPERVISED BY \_\_\_\_\_ DATE \_\_\_\_\_  
CHECKED BY \_\_\_\_\_ DATE \_\_\_\_\_