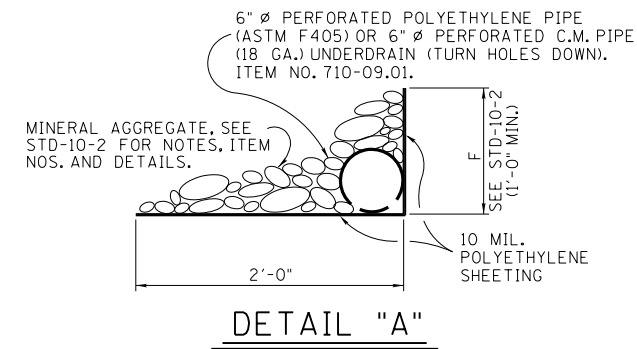
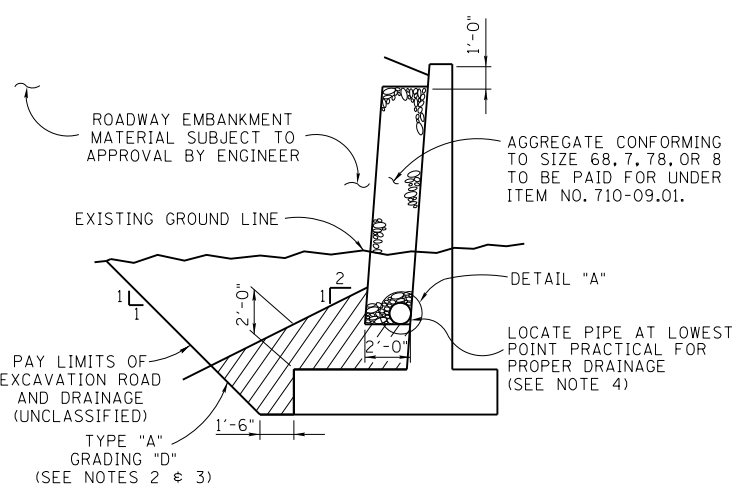
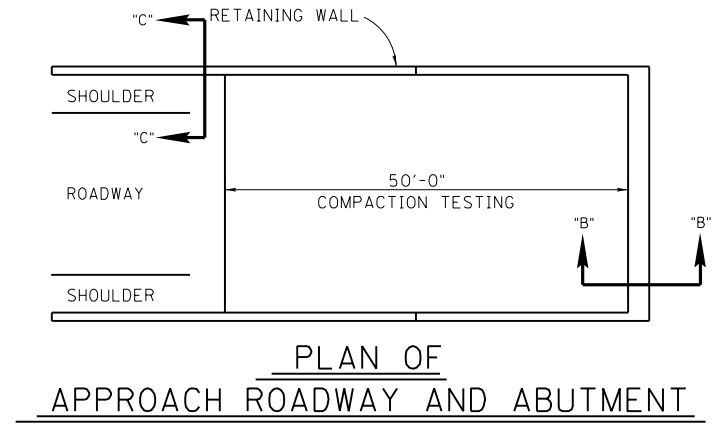
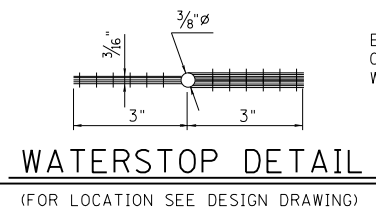
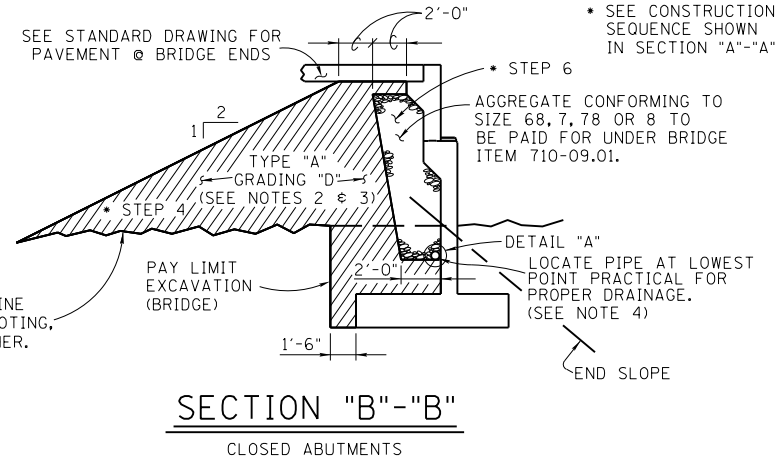
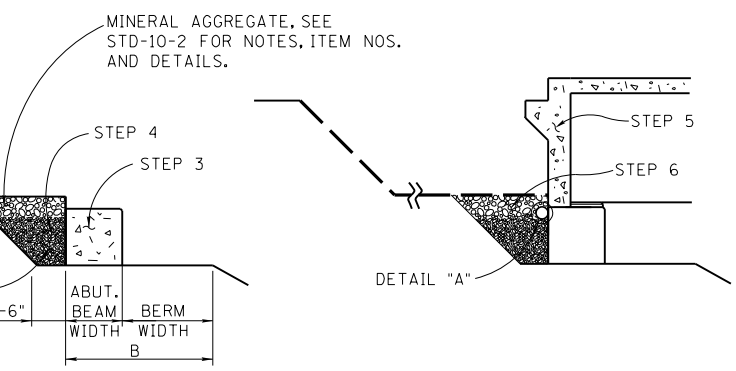
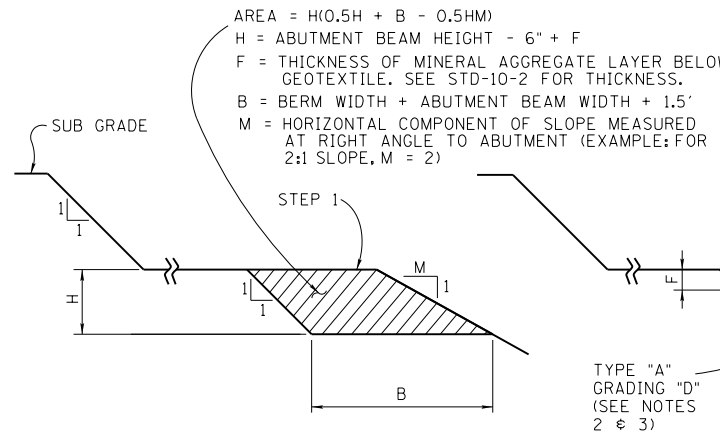


NOTE: TYPE "A" GRADING "D" LIMITS ARE TYPICAL FOR BOX CULVERT OR BRIDGE AND WINGWALLS. TYPE "A" GRADING "D" MATERIALS SHALL BE PAID FOR UNDER ROADWAY ITEM NO. 303-01.01. (SEE ROADWAY PLANS.)

PROJECT NO.	YEAR	SHEET NO.	
	2020		
REVISIONS			
NO.	DATE	BY	BRIEF DESCRIPTION
1	03-01-22	TAK	GENERAL REVISIONS

NOTES

- BACKFILLING; UNLESS OTHERWISE SPECIFIED OR DIRECTED, THE CONTRACTOR SHALL BACKFILL BEHIND ABUTMENTS, RETAINING WALLS OF BOX TYPE BRIDGES AND CULVERTS AS SOON AS THE FOLLOWING CONDITIONS ARE MET:
  - CONCRETE SURFACES AGAINST WHICH BACKFILL WILL BE PLACED HAVE BEEN GIVEN A CLASS 1 FINISH AS SPECIFIED IN SUBSECTION 604.22.
  - REPRESENTATIVE SPECIMENS OF THE CONCRETE IN THE STRUCTURE SHALL ATTAIN A COMPRESSIVE STRENGTH OF AT LEAST 3000 PSI.
  - THE CONCRETE SHALL HAVE BEEN PLACED A MINIMUM OF 7 DAYS, NOT COUNTING THE DAYS OF TWENTY-FOUR HOURS EACH IN WHICH THE TEMPERATURE FALLS BELOW FORTY DEGREES FAHRENHEIT, OR 21 CALENDAR DAYS WHICHEVER OCCURS FIRST.
- THE PLACEMENT OF BACKFILL AND EMBANKMENT SHALL BE IN ACCORDANCE WITH SUBSECTION 204.11 AND SUBSECTION 205.04, RESPECTIVELY, AND AS SPECIFIED ON THE PLANS.
- TYPE "A" GRADING "D" MATERIAL SHALL BE PAID FOR UNDER ITEM NO. 303-01.02, GRANULAR BACKFILL (BRIDGES) OR ITEM NO. 303-01.03, GRANULAR BACKFILL (RETAINING WALLS).
- IN LIEU OF THE TYPE "A" GRADING "D" MATERIAL SHOWN, TYPE "B" GRADING "C" OR "D" MAY BE USED.
- LOCATE PIPE AT LOWEST POINT PRACTICAL FOR PROPER DRAINAGE WITH SLOPE PARALLEL TO ABUTMENT BEAM OR RETAINING WALL (1/8" PER FOOT MINIMUM). INSTALL PIPE AND 1'-0" OF COVER AS SOON AS POSSIBLE AFTER FORMING WALL.



STATE OF TENNESSEE  
 DEPARTMENT OF TRANSPORTATION  
 MISCELLANEOUS ABUTMENT AND DRAINAGE DETAILS 2020

CORRECT *Ted A. Kniazewycz*  
 ENGINEER OF STRUCTURES

DESIGNED BY TDOT STRUCTURES  
 DRAWN BY GARY YOUNG  
 SUPERVISED BY TED KNIAZEWCZ  
 CHECKED BY TED KNIAZEWCZ