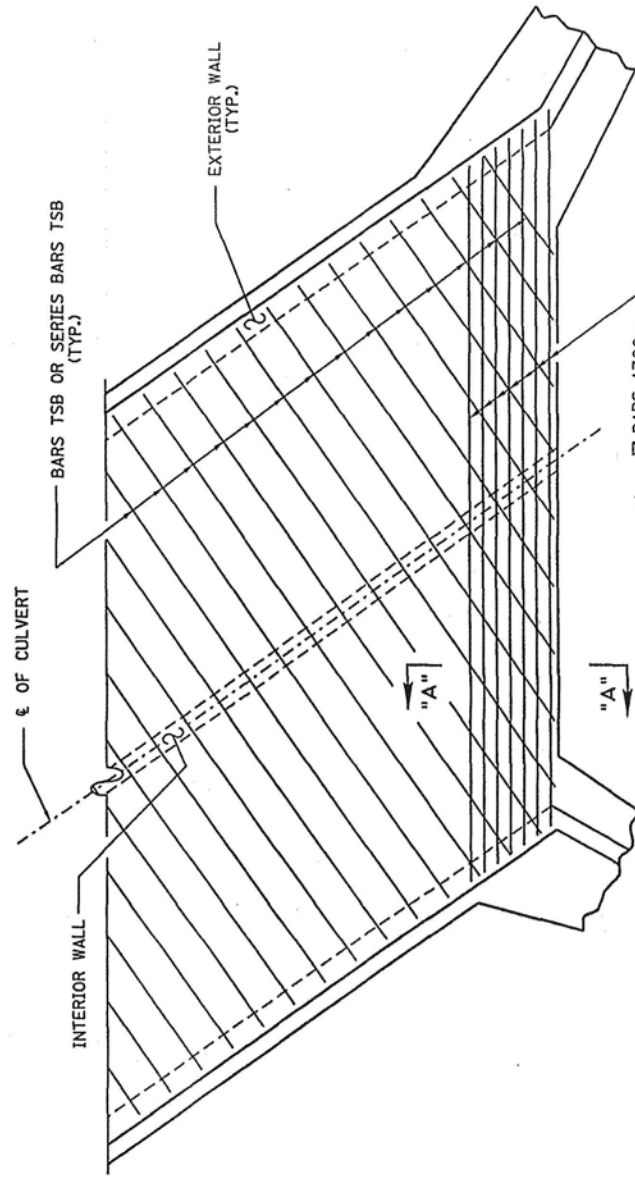
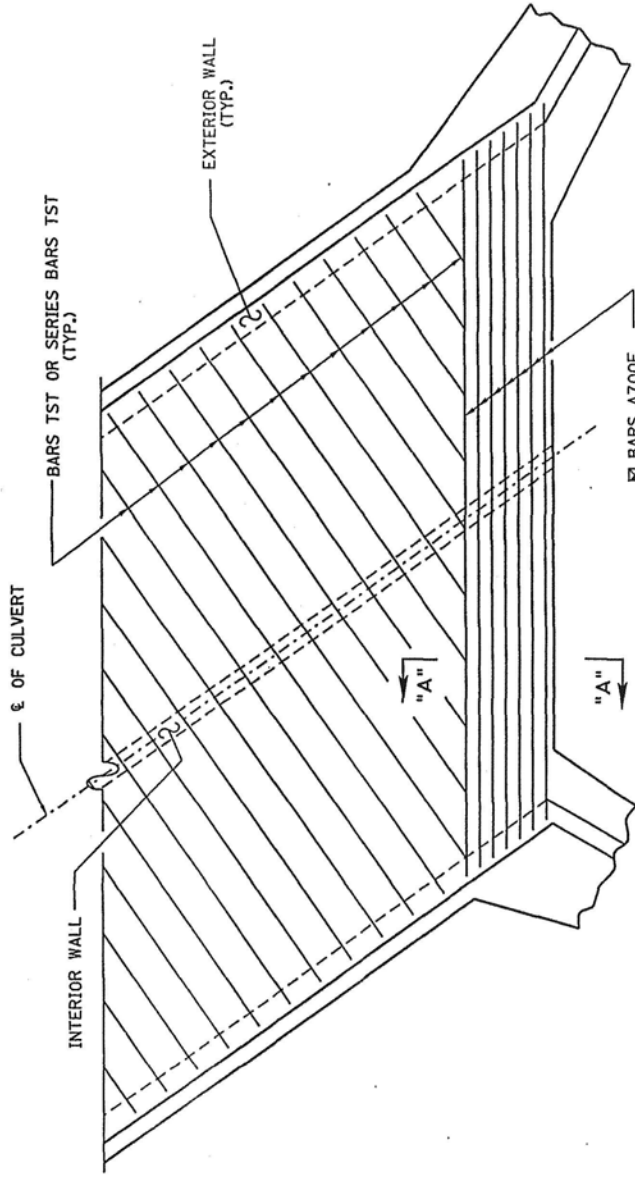


CONST. NO.	PROJECT NO.	YEAR	SHEET NO.
		2000	

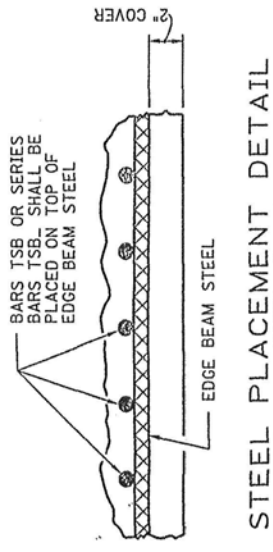
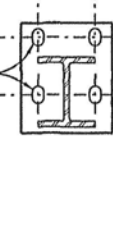
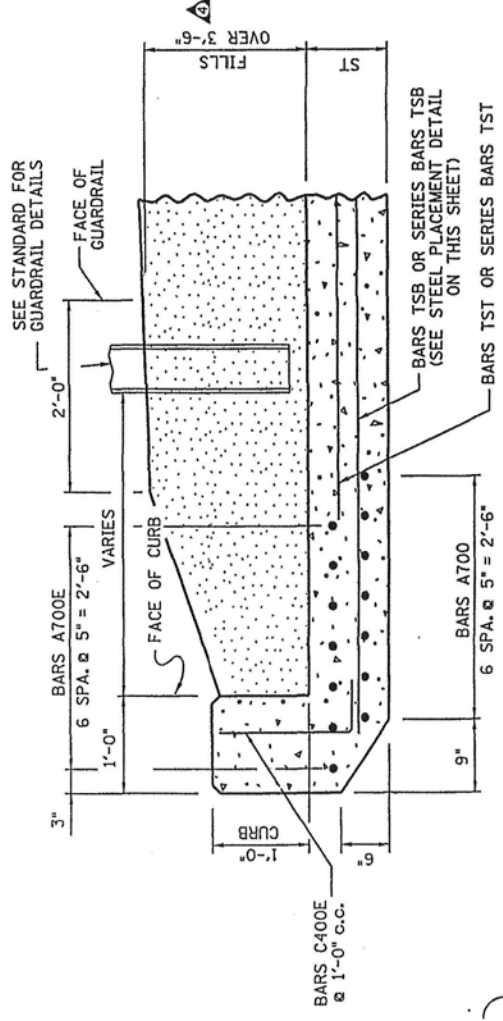
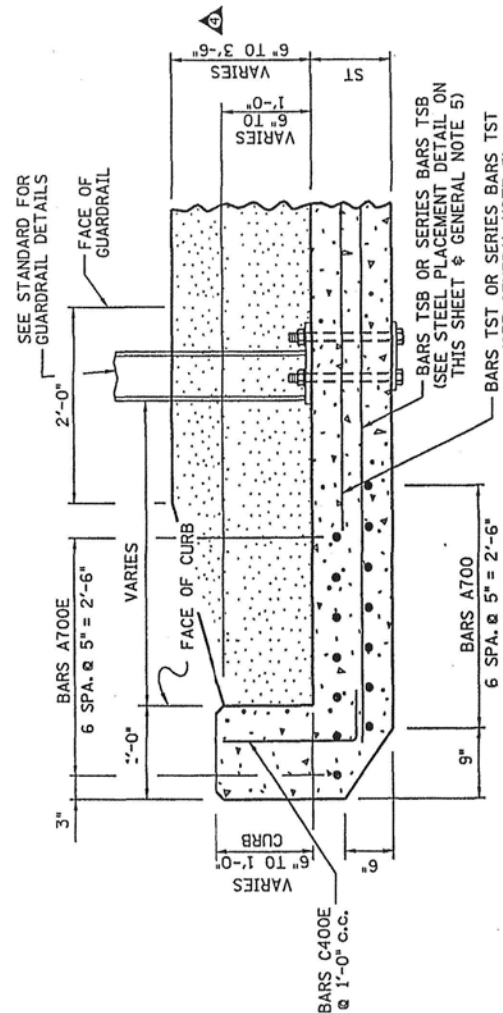
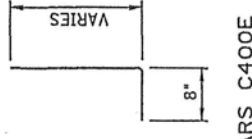
  

REVISIONS			
NO.	DATE	BY	BRIEF DESCRIPTION
1	12-7-01	CMH	GENERAL REVISION
2	3-2-02	CMH	CHANGED FILL DIMENSION & CURB
3	2-28-03	JHM	REVISED GENERAL NOTES.
4	3-28-03	JHM	REVISED DIMENSIONS.



NOTE: BARS LNT OR LND NOT SHOWN.  
 NOTE: BARS A700E AND BARS A700 SHALL BE TWO SPLICED BARS WHEN BOX WIDTH (BM) IS GREATER THAN 60'-4".

BAR BEND DETAILS



GENERAL NOTES

- NOTE: QUANTITIES WILL BE BASED ON PLANS DIMENSIONS, AS SHOWN ON THE FOLLOWING DRAWINGS: ROADWAY CULVERT SHEETS, THE CONCRETE BOX OR SLAB BRIDGE DRAWINGS DESIGNED FOR A SPECIFIC LOCATION, OR THE STANDARD BOX OR SLAB BRIDGE DRAWINGS.
- NOTE: ALL BARS "A" ARE STRAIGHT BARS.
- NOTE: SKEW ANGLES LESS THAN 45° REQUIRE SPECIAL DESIGN.
- NOTE: WHEN DEPTH OF FILL AT FACE OF GUARDRAIL EXCEEDS 3'-6" DELETE THE USE OF BOLTED BASE PLATES AND DRIVE THE POSTS.
- NOTE: ANY REINFORCING BAR THAT INTERFERES WITH THE FORMED HOLES FOR THE GUARDRAIL ANCHOR BOLTS SHALL BE MOVED HORIZONTALLY TO PROVIDE 1" MINIMUM CLEARANCE TO THE HOLE.

M/R MINOR REVISION - FHWA APPROVAL NOT REQUIRED.

STATE OF TENNESSEE  
 DEPARTMENT OF TRANSPORTATION

CURB AND RAIL DETAILS  
 SKEW NOT LESS 45 DEG.  
 STANDARD REINFORCED  
 CONCRETE BRIDGE  
 BOX AND SLAB TYPE

2000

CORRECT *Edward F. Wasserman*  
 ENGINEER OF STRUCTURES

DESIGNED BY: CMH / MAH  
 DRAWN BY: KLF / MJB  
 SUPERVISED BY: RLF / JWP / WAH  
 CHECKED BY: \_\_\_\_\_  
 DATE: 12-99  
 DATE: 12-99  
 DATE: 12-99

SECTION "A-A"

(INLET END EDGE BEAM)

SECTION "A-A"

(OUTLET END EDGE BEAM)