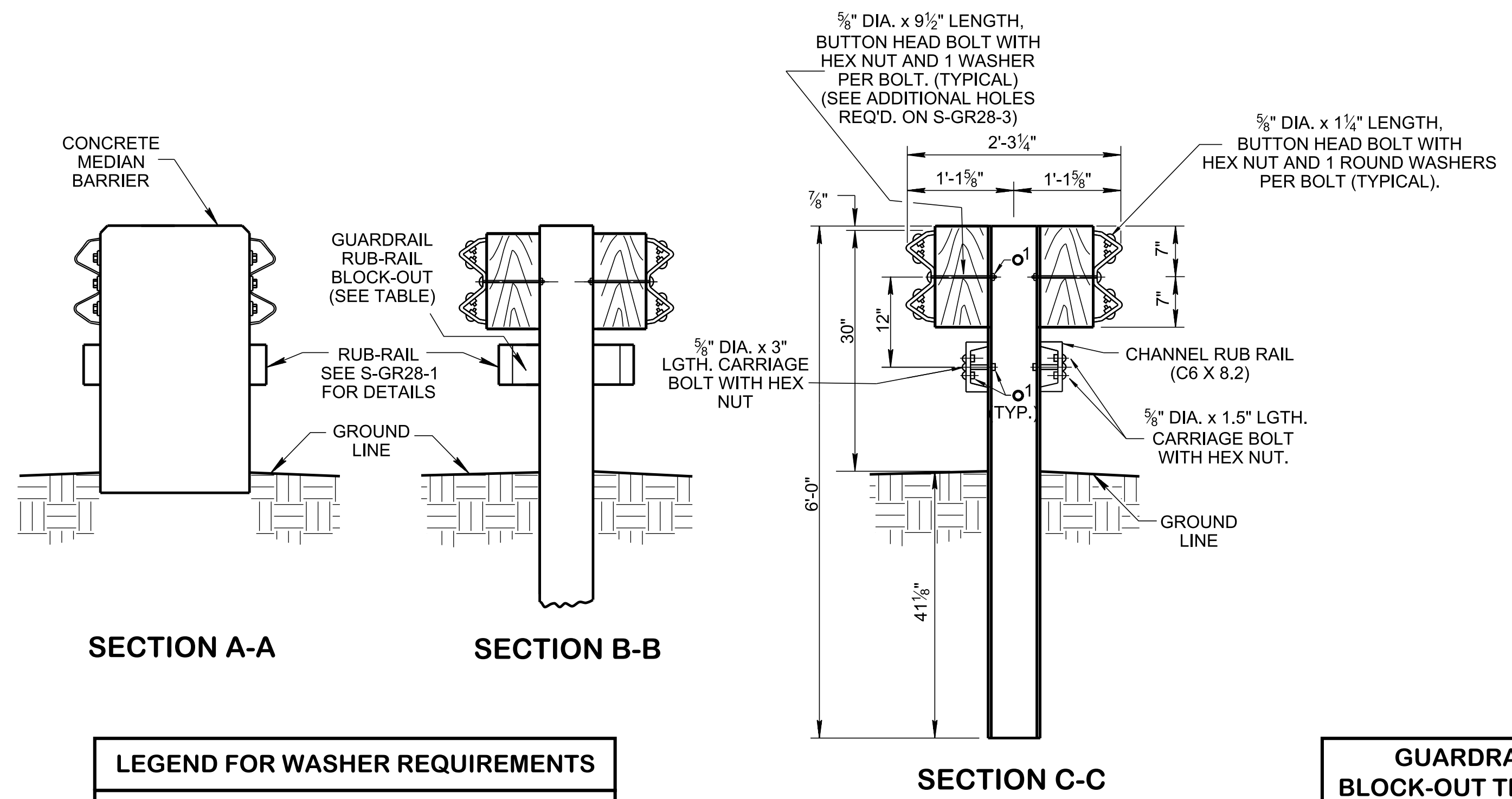
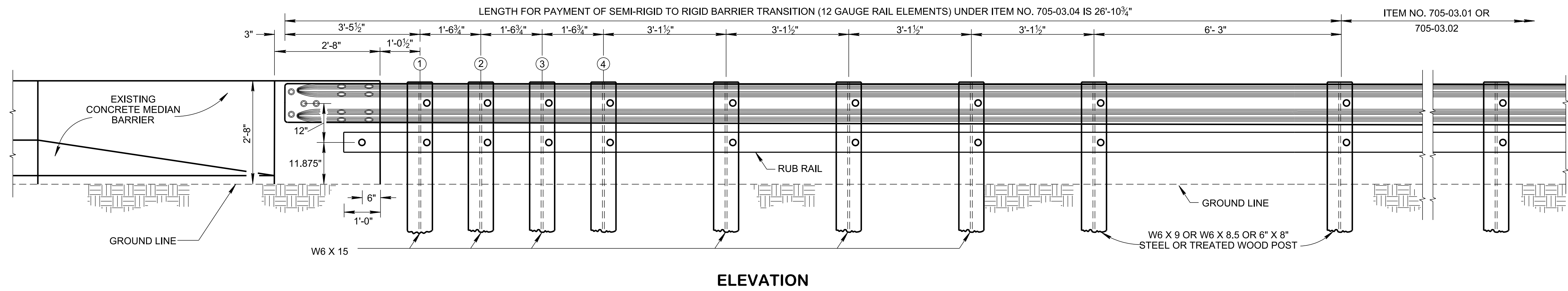
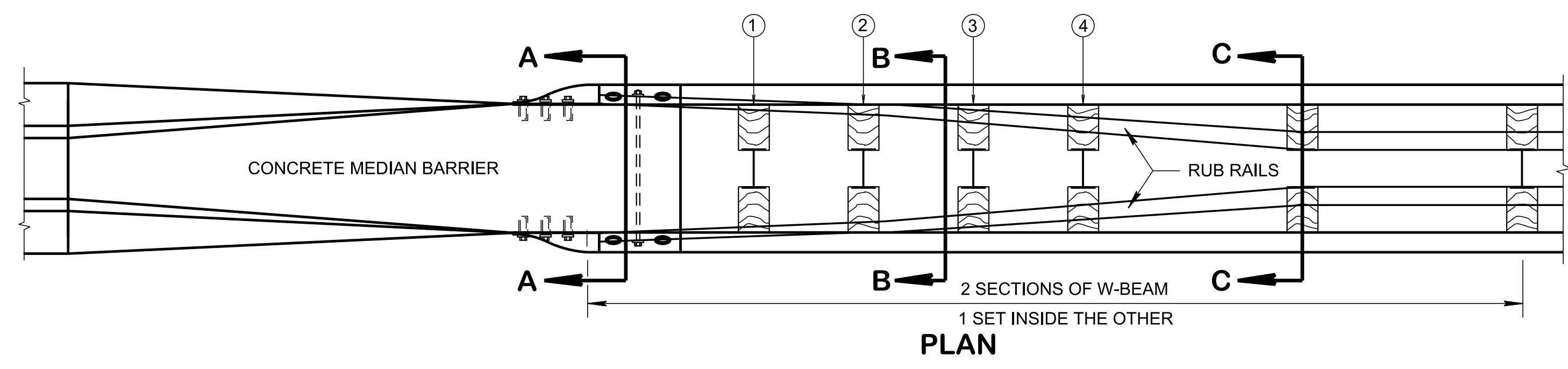


**THIS DRAWING IS TO BE USED FOR RESURFACING, MAINTENANCE, AND BRIDGE REPAIR PROJECTS ONLY, THIS DRAWING IS NOT INTENDED TO BE USED FOR NEW CONSTRUCTION OR RECONSTRUCTION PROJECTS.**



**LEGEND FOR WASHER REQUIREMENTS**

1 OR 2 ROUND WASHERS	—	o1	o2
----------------------	---	----	----

**GUARDRAIL RUB-RAIL BLOCK-OUT THICKNESS TABLE**

POST	THICKNESS
1	0.556'
2	0.446'
3	0.338'
4	0.230'

TREATED TIMBER 14 1/2" X 4" BLOCK-OUT

- MEDIAN DIVIDER GUARDRAIL TERMINAL NOTES**
- AN APPROVED NCHRP 350 O MASH CRASH CUSHION OR MEDIAN GUARDRAIL TERMINAL SHALL BE USED FOR TERMINATING MEDIAN DIVIDER METAL - BEAM GUARDRAIL AND CONCRETE MEDIAN BARRIER WALL.
  - PAY ITEM WILL INCLUDE FURNISHING AND INSTALLING ALL COMPONENTS AS LISTED ON THE MANUFACTURER'S BILL OF MATERIALS.
  - THIS SYSTEM HAS BEEN EVALUATED UNDER NCHRP 350 TL-3.

- GENERAL NOTES**
- MATERIALS AND SPECIFICATIONS NOT SHOWN IN THESE "S-GR28" SERIES OF DRAWINGS SHALL BE IN ACCORDANCE WITH STANDARD PROVISIONS REGARDING SECTION 705.
  - THE CONTRACTOR MAY HAVE OPTIONAL CHOICE OF EITHER THE STEEL W6 X 8.5, W6 X 9.0 HOT ROLLED OR WELDED STEEL SHAPE, WITH THEIR COMPANION BLOCK-OUTS AS SHOWN ABOVE, WITHIN THE FOLLOWING STIPULATIONS:
    - THE MIXING OF ANY OF THE ABOVE POSTS TYPES ON A GIVEN PROJECT WILL BE AVOIDED IF POSSIBLE.
    - SHOULD IT BECOME NECESSARY TO CHANGE THE TYPE OF POSTS ON A GIVEN PROJECT, THE POSTS SHALL NOT BE MIXED ON ANY GIVEN RUN OF GUARDRAIL.
  - ON EXISTING STRUCTURES NOT HAVING A VERTICAL FACE FOR THE ATTACHMENT OF TWO RAIL ELEMENTS, USE OF THE W6 X 15.0 POSTS IS REQUIRED ON THE SEMI-RIGID TO RIGID BARRIER TRANSITION DETAILS. THE BOLT HOLES WILL BE ORIENTED TO THE CENTER LINE OF THE FLANGE OF THE STEEL POST AND WILL BE THE SAME SIZE AND DIMENSION AS THOSE SHOWN ON STANDARD DRAWING S-GR28-3.
  - METAL POSTS AND ALL BLOCK-OUTS SHALL BE FURNISHED WITH HOLES FOR FUTURE RAIL ADJUSTMENT IN ACCORDANCE WITH DETAILS SHOWN ON STANDARD DRAWINGS S-GR28-2 AND S-GR28-3.
  - W6 X 9.0 OR W6 X 8.5 POST SHALL BE USED FOR INSTALLATIONS ON BRIDGES AS SHOWN ON STANDARD DRAWING S-GR28-6.
  - WELDED STEEL POSTS MAY BE USED AS ALTERNATES TO THE HOT ROLLED STEEL SHAPE. THEY MUST CONFORM TO ASTM A-769 AND BE GALVANIZED ACCORDING TO ASTM A-123.
  - THIS SYSTEM HAS BEEN EVALUATED UNDER NCHRP 350 TL-3.

MINOR REVISION -- FHWA APPROVAL NOT REQUIRED

STATE OF TENNESSEE  
STANDARD DRAWING  
DEPARTMENT OF TRANSPORTATION

MEDIAN DIVIDER GUARDRAIL

10/8/2019 1:51:53 PM P:\StandDraw\DESIGN STANDARDS\Standards Drawings Library\Standard Roadway Drawings - CURRENT\In Progress\150.00 Safety Design and Fences IP\150.09 Guardrail Maintenance IP\SGR285M-20190628.LLP