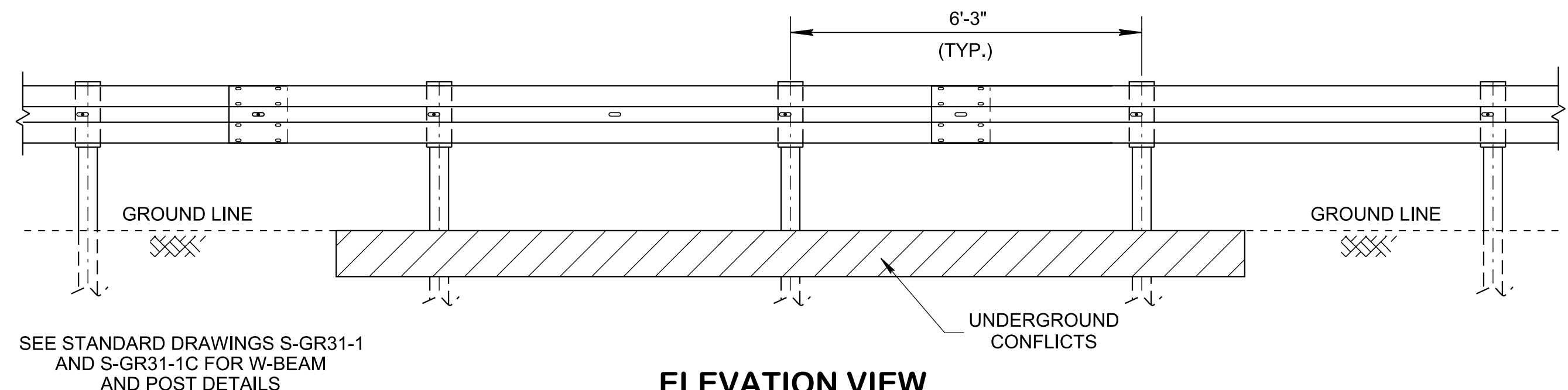
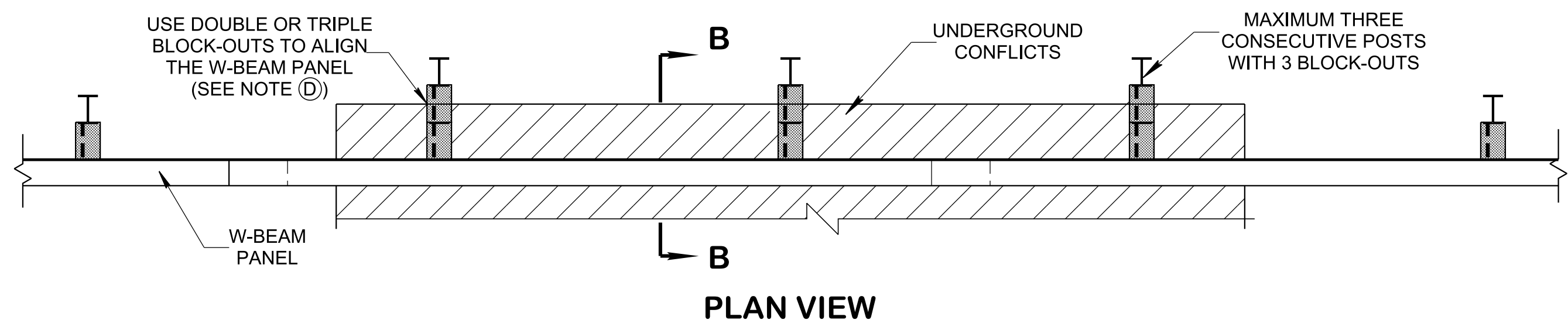
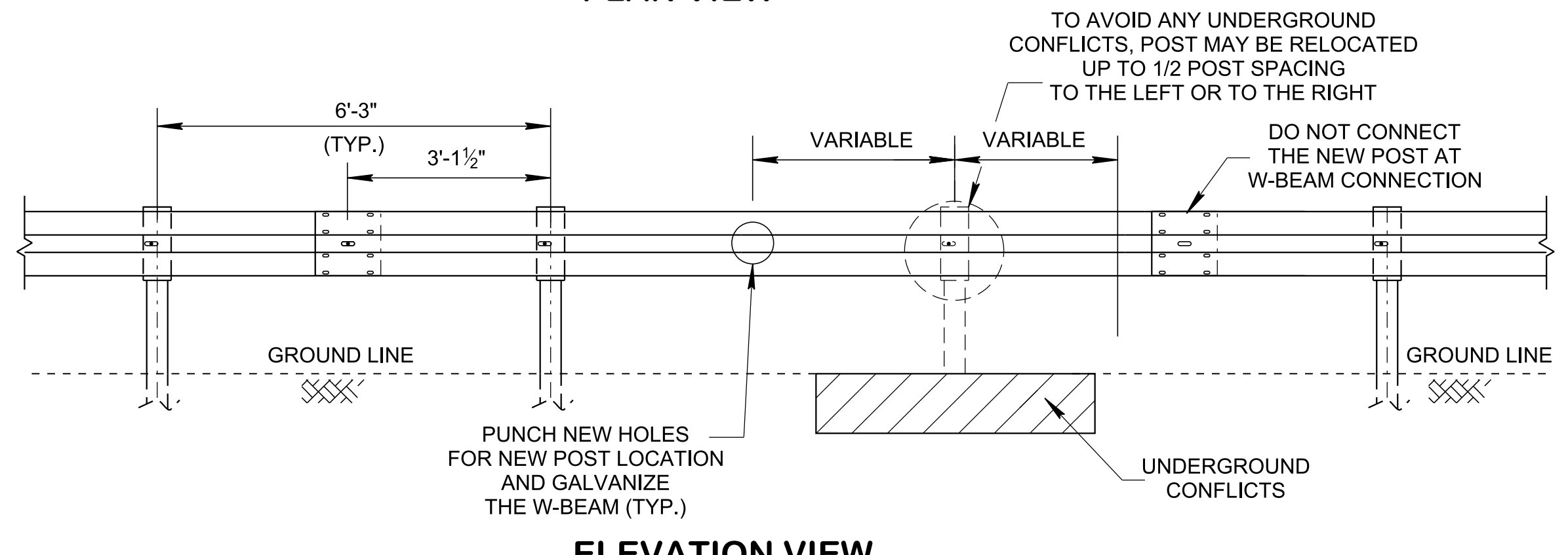
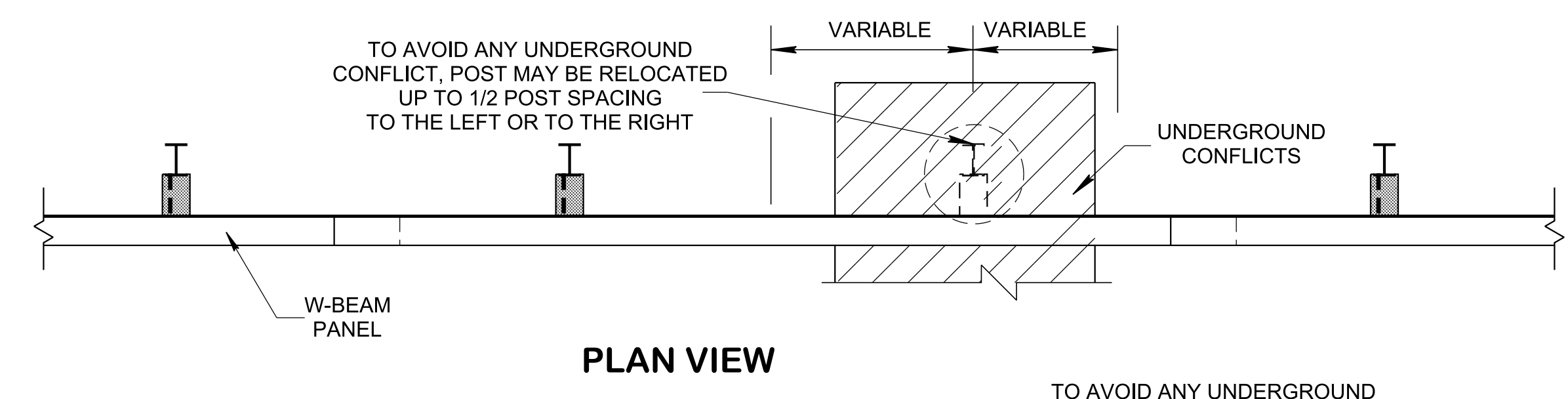


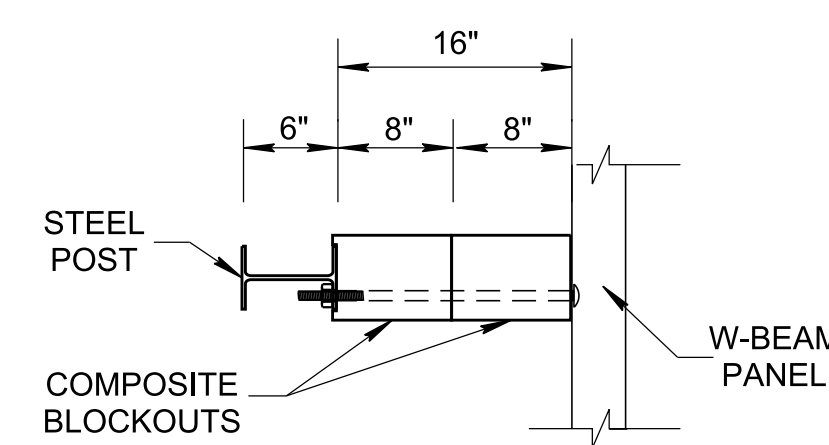
2/11/2022 9:34:16 AM
 P:\StandDraw\DESIGN STANDARDS\Standards Library\Standard Roadway Drawings - CURRENT\In Progress\10-106.00 Safety Design and Guardrails IP\106.06 Guardrail (Special Cases) IP\ISGRS6-2022



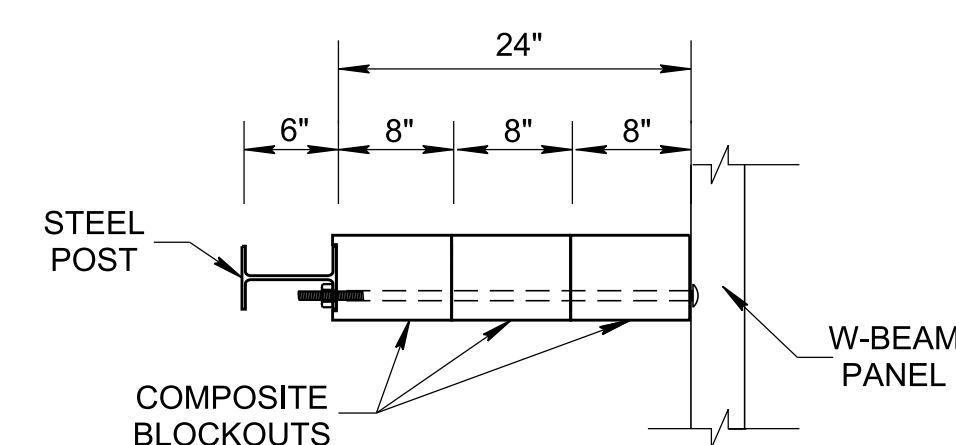
TO OFFSET GUARDRAIL POSTS TO AVOID UNDERGROUND CONFLICTS



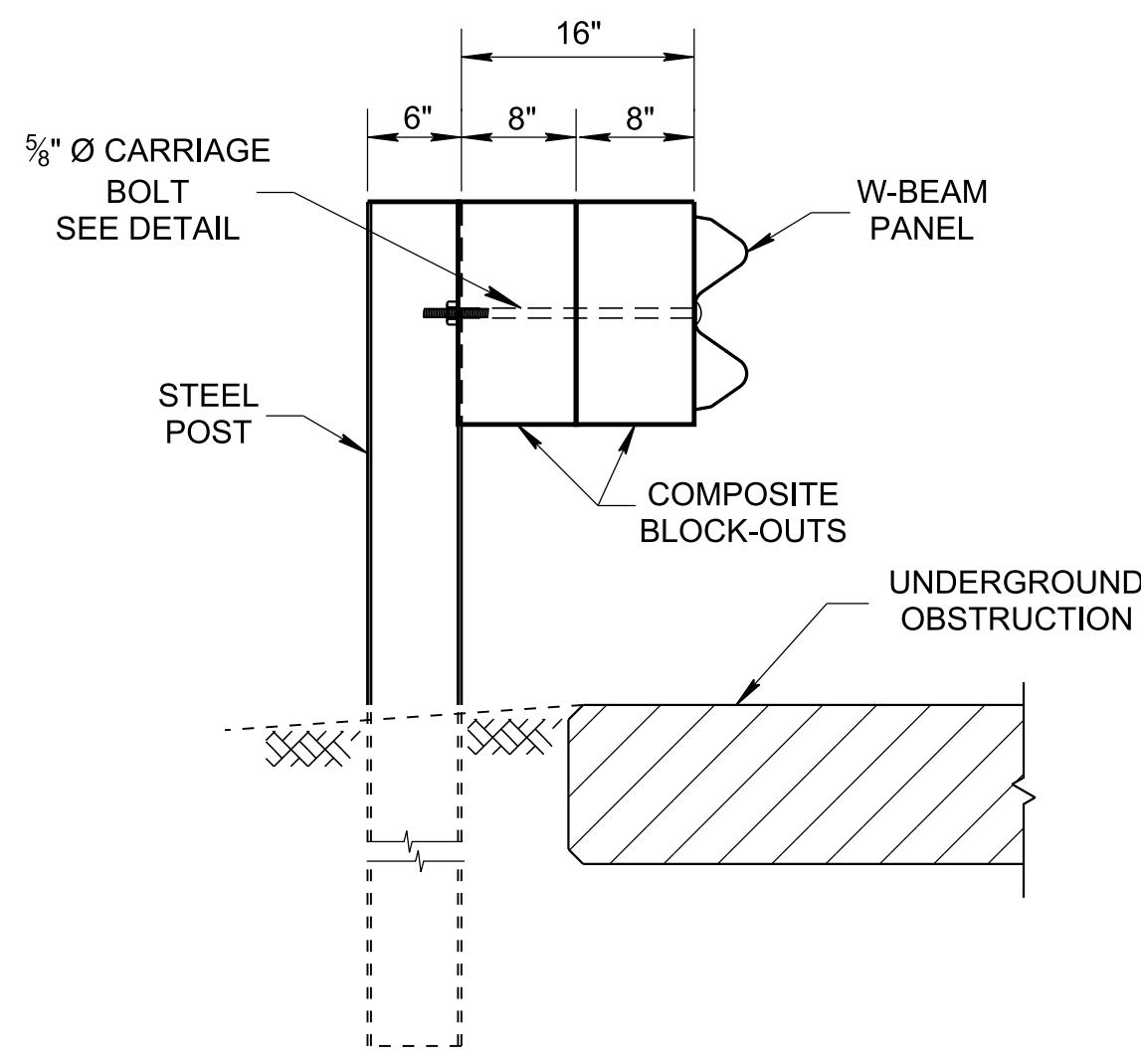
GUARDRAIL POST INSTALLATION FLEXIBILITY TO AVOID UNDERGROUND CONFLICTS



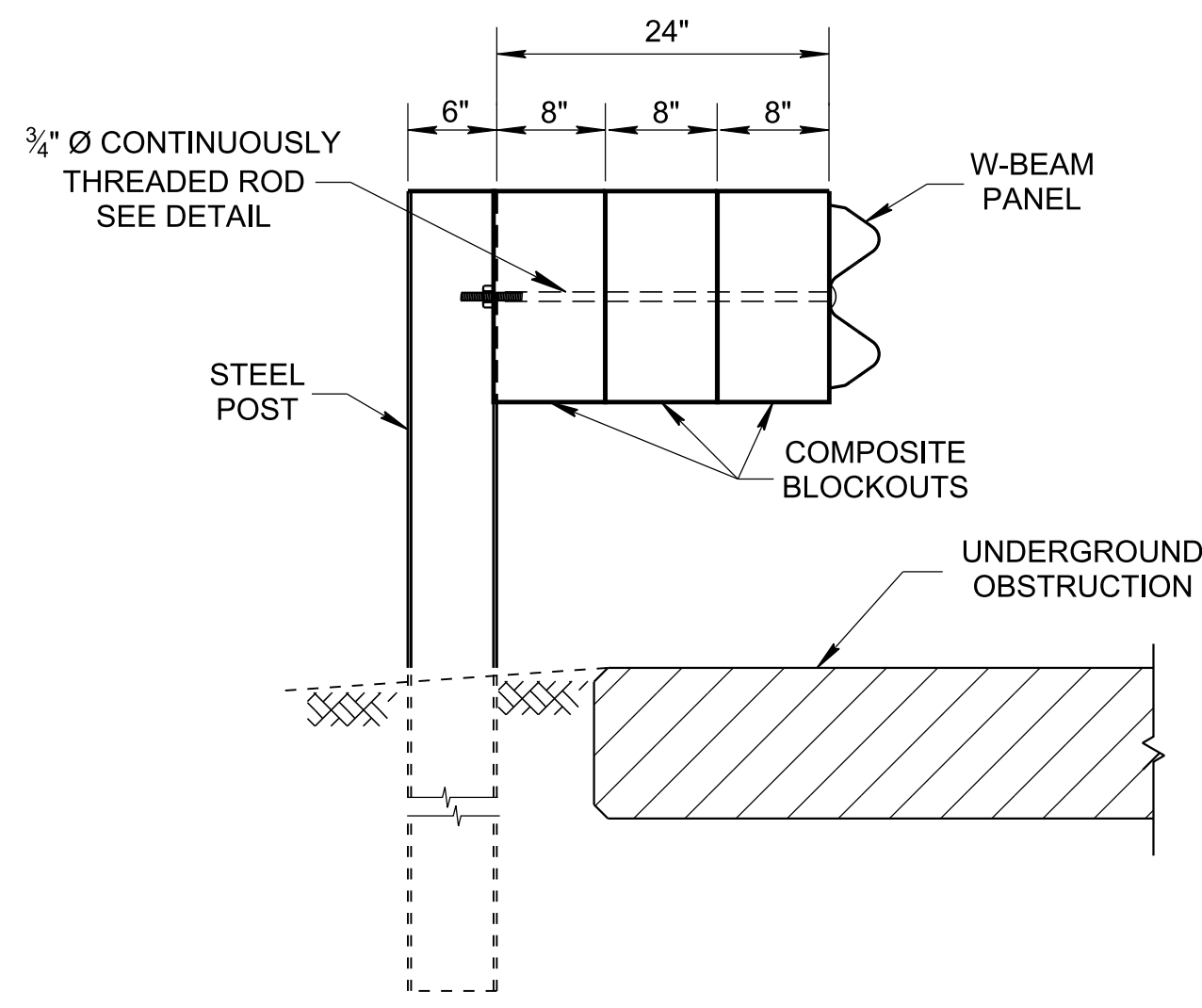
**DOUBLE COMPOSITE BLOCK-OUTS
PLAN VIEW**



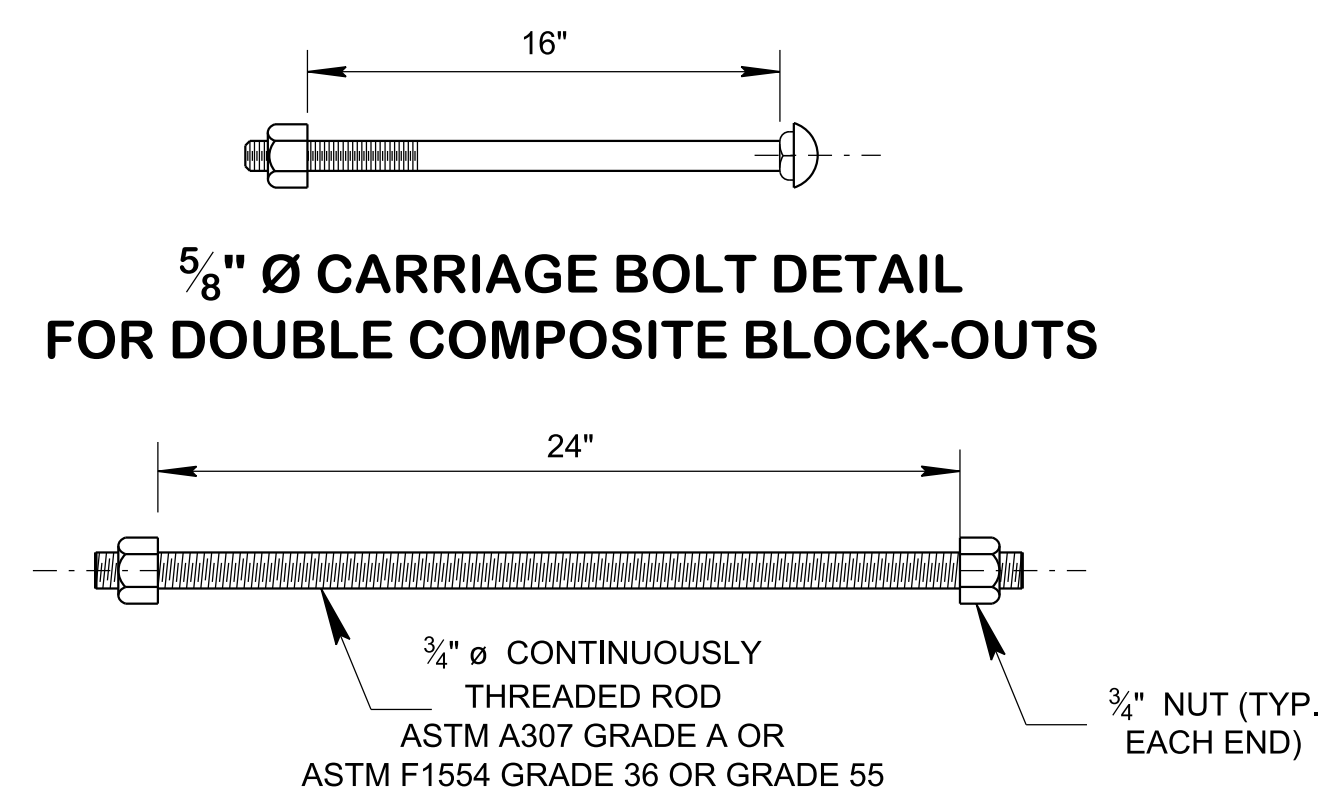
**TRIPLE COMPOSITE BLOCK-OUTS
PLAN VIEW**



**DOUBLE COMPOSITE BLOCK-OUTS
SECTION B-B**



TRIPLE BLOCK-OUTS ALTERNATIVE DETAIL



3/4\"/>

- GENERAL NOTES**
- (A) DRAWING IS TO BE USED FOR GUARDRAIL PLACEMENT WHEN ENCOUNTERING AN OBSTRUCTION WHICH WILL PREVENT GUARDRAIL POSTS FROM BEING INSTALLED PROPERLY.
 - (B) POSTS MAY BE OMITTED ON A RUN OF GUARDRAIL ONLY. THIS APPLICATION IS NOT TO BE USED AS PART OF AN END TERMINAL. IF AN OBSTRUCTION IS ENCOUNTERED AT A TERMINAL LOCATION, THE GUARDRAIL RUN IS TO BE EXTENDED TO A POINT WHERE THE TERMINAL MAY BE INSTALLED PROPERLY.
 - (C) REFER TO STANDARD DRAWING S-GRS-1 FOR LONG SPAN GUARDRAIL OMITTED POST DETAILS.
 - (D) IN ORDER TO AVOID UNDERGROUND CONFLICTS DOUBLE STANDARD BLOCKOUTS, OR COMBINATIONS OF BLOCKOUTS UP TO 16 IN. DEEP, MAY BE USED CONTINUOUSLY IN A GUARDRAIL SYSTEM. TRIPLE STANDARD BLOCKOUTS, OR COMBINATIONS OF BLOCKOUTS UP TO 24 IN. DEEP SHOULD BE LIMITED TO THREE CONSECUTIVE POSTS IN 75 FT. OF GUARDRAIL.
 - (E) SEE STANDARD DRAWINGS RD11-TS-SERIES FOR SLOPE CRITERIA , S-GRT31 SERIES FOR GUARDRAIL DETAILS AND S-PL-6 FOR GUARDRAIL PLACEMENT DETAILS.
 - (F) PAYMENT FOR FURNISHING AND INSTALLING LONG SPAN GUARDRAIL INCLUDING ALL MATERIAL AND LABOR FOR CONSTRUCTION WILL BE MADE UNDER PAY ITEM NUMBER:
- 705-06.01, W-BEAM GUARDRAIL (TYPE 2) MASH TL-3 PER L.F.

STATE OF TENNESSEE
 STANDARD DRAWING
 DEPARTMENT OF TRANSPORTATION
SPECIAL CASE
FLEXIBILITY ON
GUARDRAIL POST
INSTALLATIONS