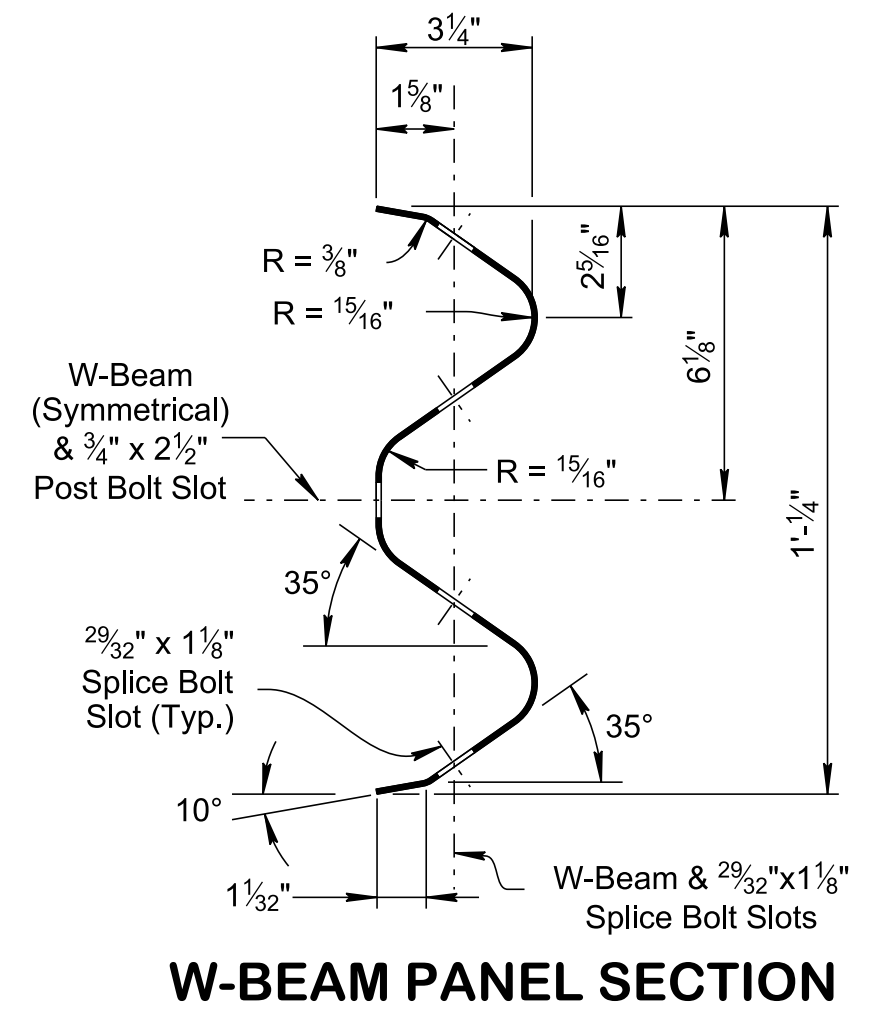
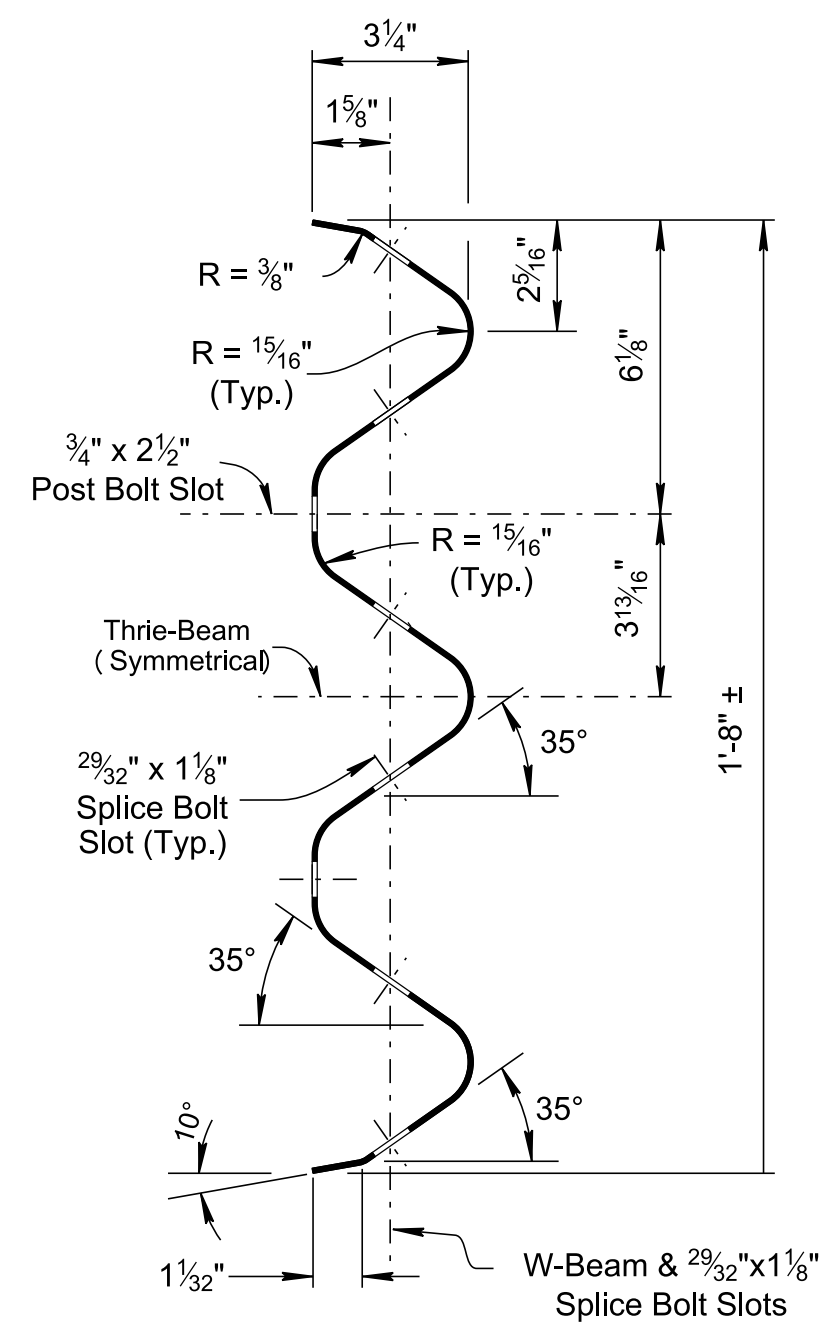


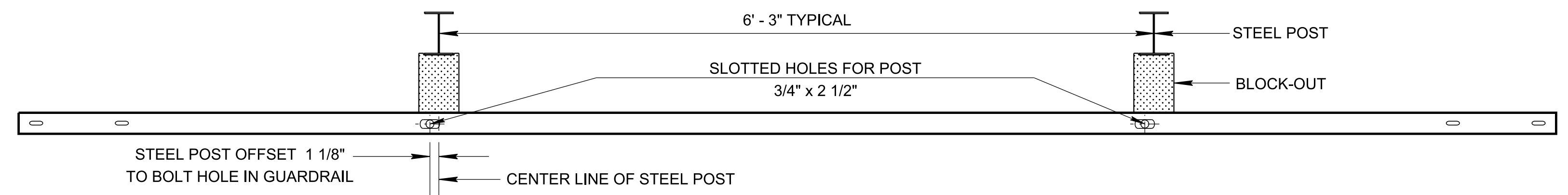
7/16/2021 1:43:01 PM P:\StandDraw\DESIGN STANDARDS\Standards Drawings Library\Standard Roadway Drawings - CURRENT\In Progress\10-106.00 Safety Design and Guardrails IPY106.04 Guardrail Details IPISGR311-20210615.dwg



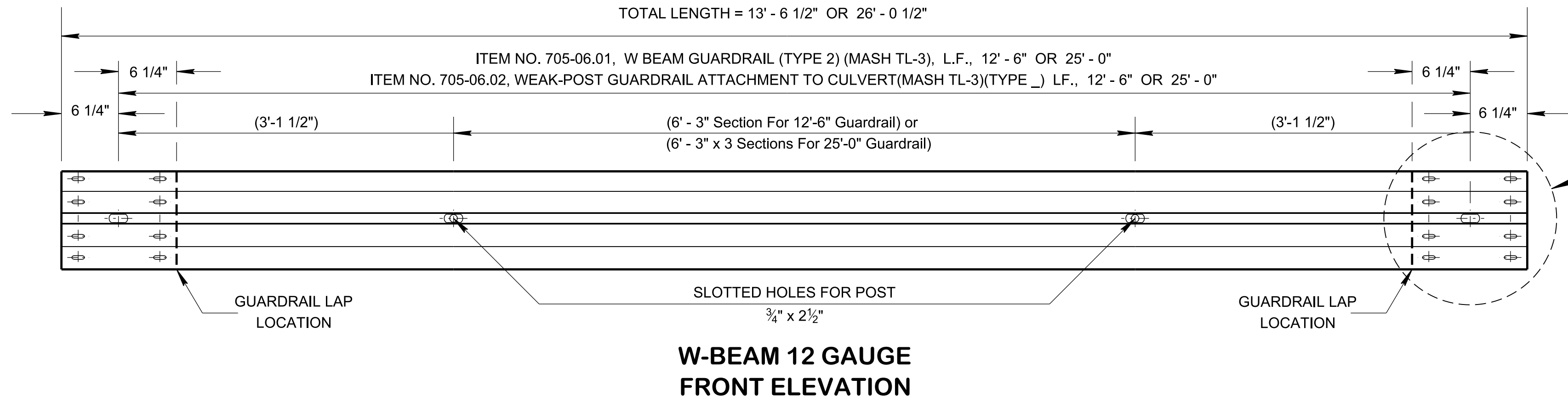
W-BEAM PANEL SECTION



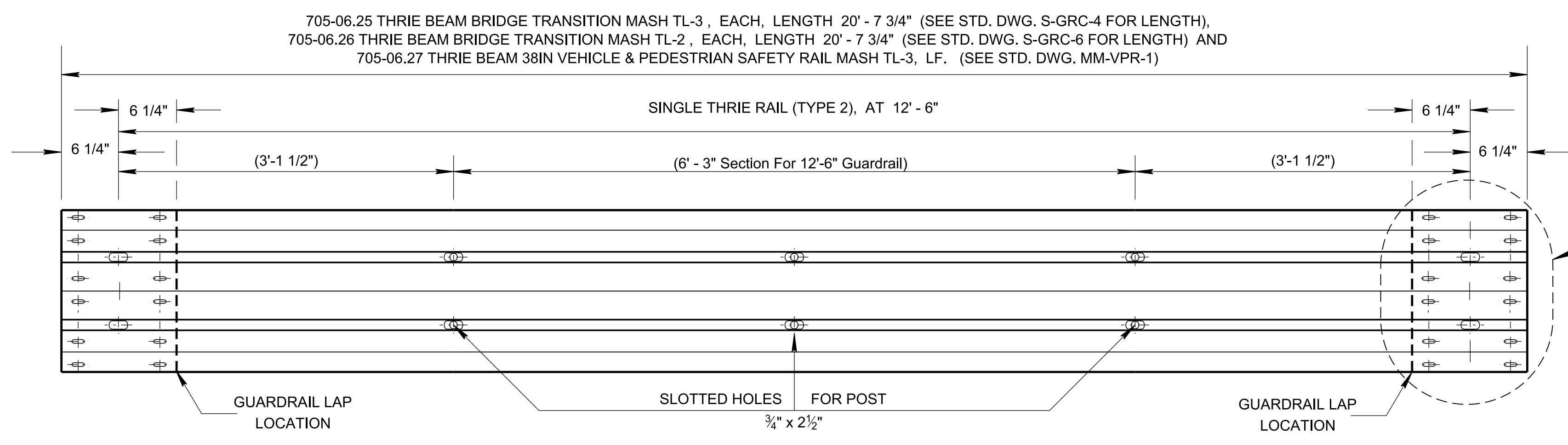
THRIE-BEAM PANEL SECTION



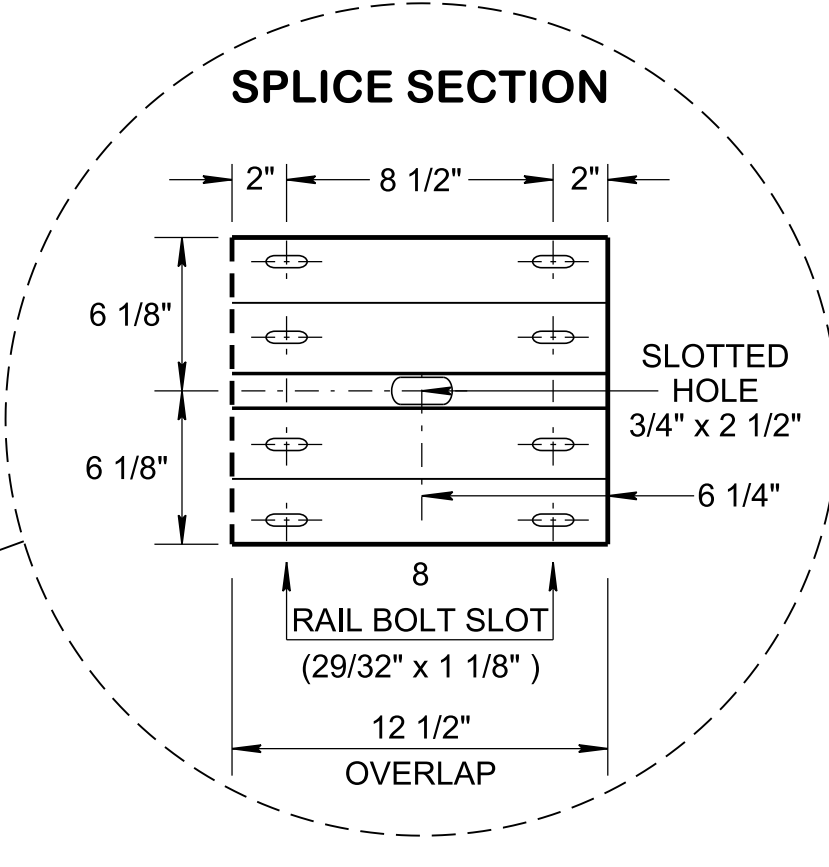
PLAN VIEW



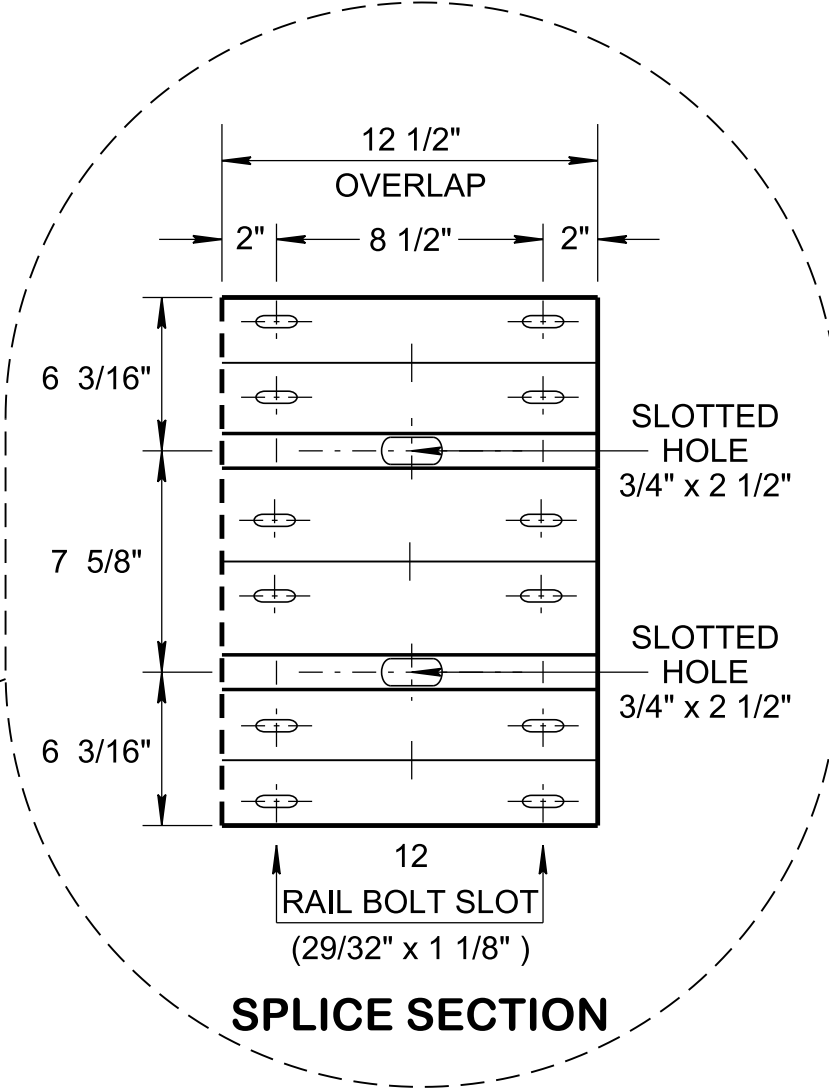
W-BEAM 12 GAUGE FRONT ELEVATION



THRIE-BEAM RAIL 12 GAUGE FRONT ELEVATION



SPLICE SECTION



SPLICE SECTION

GENERAL NOTES

(A) METAL BEAMS SHALL CONFORM TO AASHTO M180 CLASS "A": TYPE II, OR TYPE VI.

(B) WHERE GUARDRAIL IS PLACED ON A CURVE WITH A RADIUS LESS THAN 150 FEET, THE RAIL IS TO BE SHOP-FORMED TO THE REQUIRED RADIUS.

(C) AT THE OPTION OF THE CONTRACTOR THE RAIL ELEMENTS FOR THE GUARDRAIL MAY BE FURNISHED IN EITHER 12'-6" OR 25' NOMINAL LENGTHS WITH POST BOLT SLOTS FOR CONNECTION TO POSTS.

- REV. 12-01-14: REVISED NOTE (L)
- REV. 04-04-16: REVISED NOTES.
- REV. 10-20-16: ADDED NOTE TO ADDRESS ADDITIONAL HOLES.
- REV. 03-28-17: REMOVED NOTE (T) CHANGED PAY ITEM NUMBER. IMPROVED POST SIDE VIEWS AND FRONT ELEVATION VIEWS.
- REV. 06-28-19: MOVED GENERAL NOTES FOR POST, BLOCK-OUTS, FUTURE ADJUSTMENTS, END TREATMENTS, DESIGN AND PAYMENT ALONG WITH GUARDRAIL POST TO STD. DWG. NO. S-GR31-1C. ADDED NEW GUARDRAIL DETAILS. RENAMED AND REDREW SHEET.
- REV. 06-15-21: REVISED NOTE (A) ADDED ITEM NUMBERS ON THRIE BEAM RAIL AND ON W BEAM. REMOVED PANEL SUMMARY TABLE.

MINOR REVISION -- FHWA APPROVAL NOT REQUIRED

STATE OF TENNESSEE
STANDARD DRAWING
DEPARTMENT OF TRANSPORTATION

GUARDRAIL
DETAILS