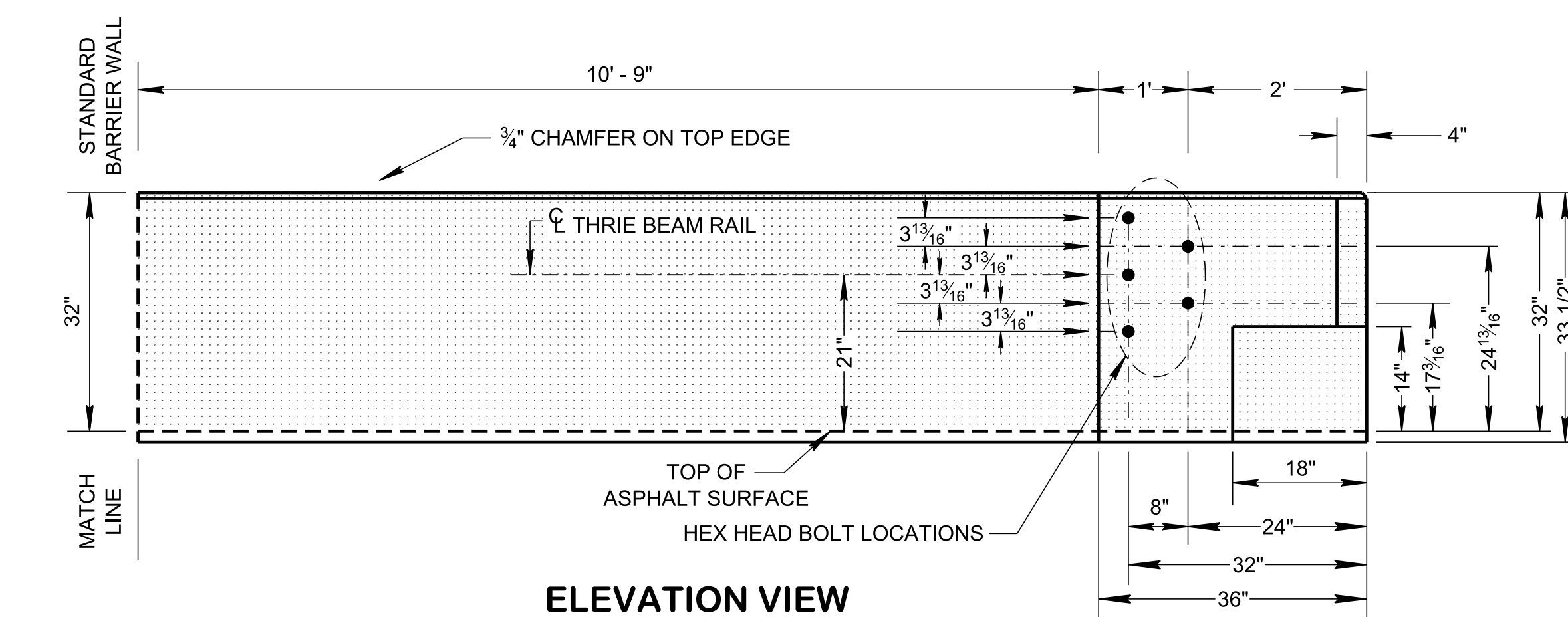
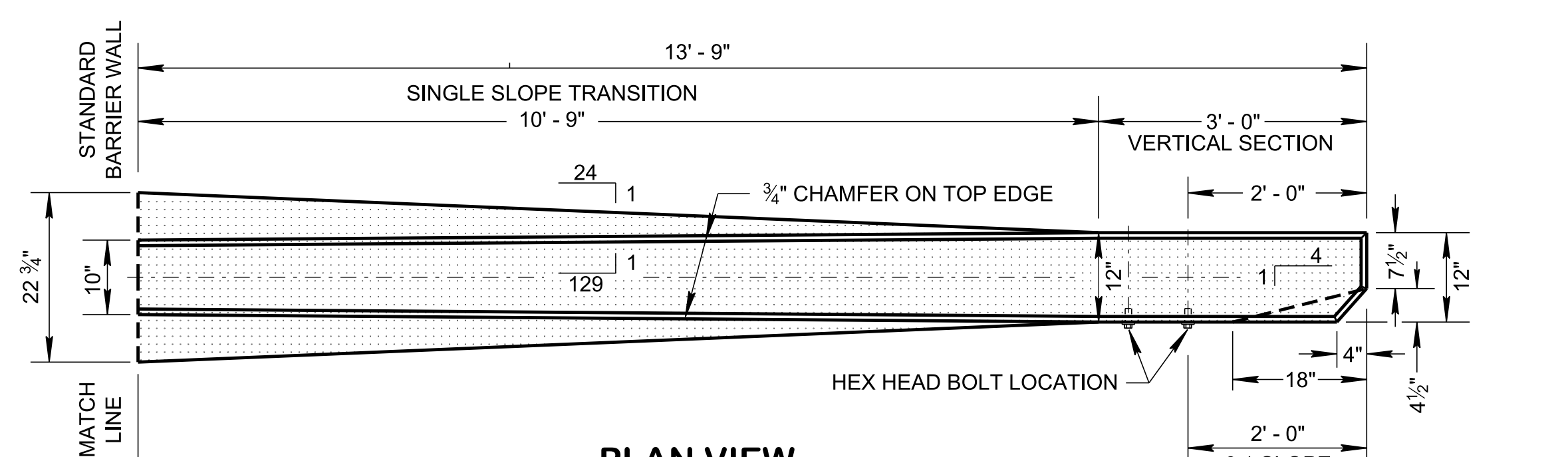
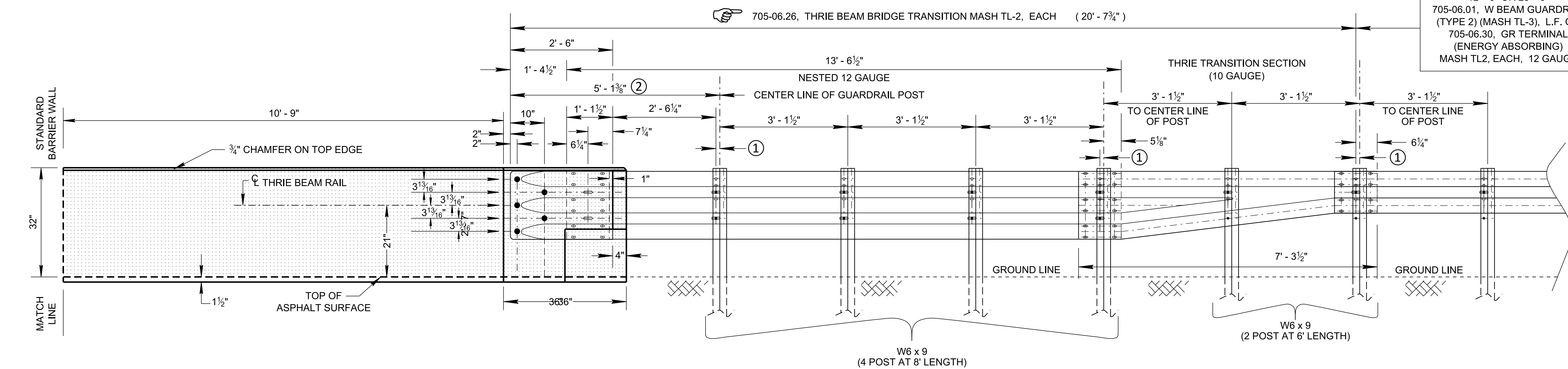
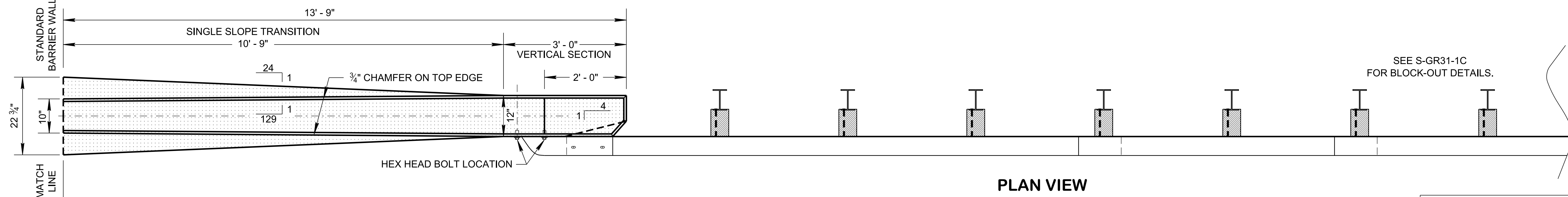


REV. 10-24-13: DELETED NOTE 6.  
 REV. 05-27-16: ADDED ALTERNATE CROSS-SECTION DETAILS. REVISED DIMENSIONS. CORRECTED GENERAL NOTES.  
 REV. 06-28-19: REMOVED 51" BARRIER WALL. REPLACE ALL NOTES AND DETAILS. CHANGED DRAWING NAME AND REDREW SHEET.



**SINGLE THRIE-BEAM GUARDRAIL CONNECTION  
 (FOR CONCRETE BARRIER WALL)**

**LEGEND**

- ① 1 1/8" POST OFFSET TO BOLT HOLE (TYPICAL)
- ② FOR SINGLE THRIE BEAM CONNECTION ONLY, THE APPROACHING OPPOSITE SIDE OF THE ROADWAY THE DISTANCE IS 3' - 4 3/8" DUE TO POST BEING REVERSED AND BOLT HOLE OFFSET OF 2 1/4".

**GENERAL NOTES**

- (A) THIS DRAWING IS TO BE USED ONLY WITH DESIGN SPEED OF ≤ 45 M.P.H. THIS DRAWING SHOWS THE TRANSITION SECTIONS FOR 32" CONCRETE BARRIER WALL AND THE ATTACHMENT DETAIL FOR THE THRIE BEAM GUARDRAIL SECTION. THE BARRIER WILL REQUIRE STEEL BAR REINFORCING OR WELDED WIRE FABRIC AS SHOWN IN STD. DWG. NO. S-SSMB-1. FOR OTHER DETAILS SEE S-GR31-1 SERIES.
- (B) SAFETY PERFORMANCE OF THIS DEVICE HAS BEEN EVALUATED PER TRB 2672(39) 41-51 DEVELOPMENT OF A STANDARDIZED BUTTRESS FOR APPROACH GUARDRAIL TRANSITIONS AND TTI REPORT 9-1002-8, FOR MASH TL-2.
- (C) ALL COMPONENTS AS SHOWN ON THIS DRAWING OR ANY COMPONENTS NEEDED TO INSTALL THIS GUARDRAIL SHALL BE INCLUDED UNDER PAY ITEM 705-06.26, THRIE BEAM BRIDGE TRANSITION MASH TL-2, EACH.
- (D) BUTTON HEAD "POST" BOLTS (ASTM A307) SHALL BE OF SUFFICIENT LENGTH TO EXTEND THROUGH THE FULL THICKNESS OF THE NUT (ASTM A563) AND WASHER AND NOT MORE THAN 1" BEYOND IT. THE BUTTON HEAD "SPLICE" BOLTS (ASTM 307), 5/8" DIA. X 2" (SHALL BE USED AT THRIE-BEAM RAIL SPLICES) WITH 5/8" DOUBLE RECESSED NUTS.
- (E) GALVANIZED WASHERS USED WITH THE 5/8" DIA. POST BOLTS SHALL BE TYPE A 1-3/4" O. D. WASHERS. THE (12) PLATE WASHERS (FWR03) ARE REQUIRED AT THE TERMINAL CONNECTOR SPLICE.
- (F) TO CONNECT THE THRIE BEAM GUARDRAIL AND THE TERMINAL CONNECTION TO THE CONCRETE BARRIER WALL WILL REQUIRE 5 HEX HEAD BOLTS FOR SINGLE GUARDRAIL HOOKUP AT 7/8" Ø X 2", WITH WASHERS AND NUTS.

MINOR REVISION -- FHWA APPROVAL NOT REQUIRED

STATE OF TENNESSEE  
 STANDARD DRAWING  
 DEPARTMENT OF TRANSPORTATION

**32" CONCRETE  
 SINGLE SLOPE  
 BARRIER WALL WITH  
 SINGLE GUARDRAIL  
 ATTACHMENT**

08-30-2010 S-SSMB-6

11/27/2019 9:28:19 AM C:\Users\jj00547\Desktop\106.09 Concrete Median Barriers IP\SSSMB6-20190628.dgn

NOT TO SCALE