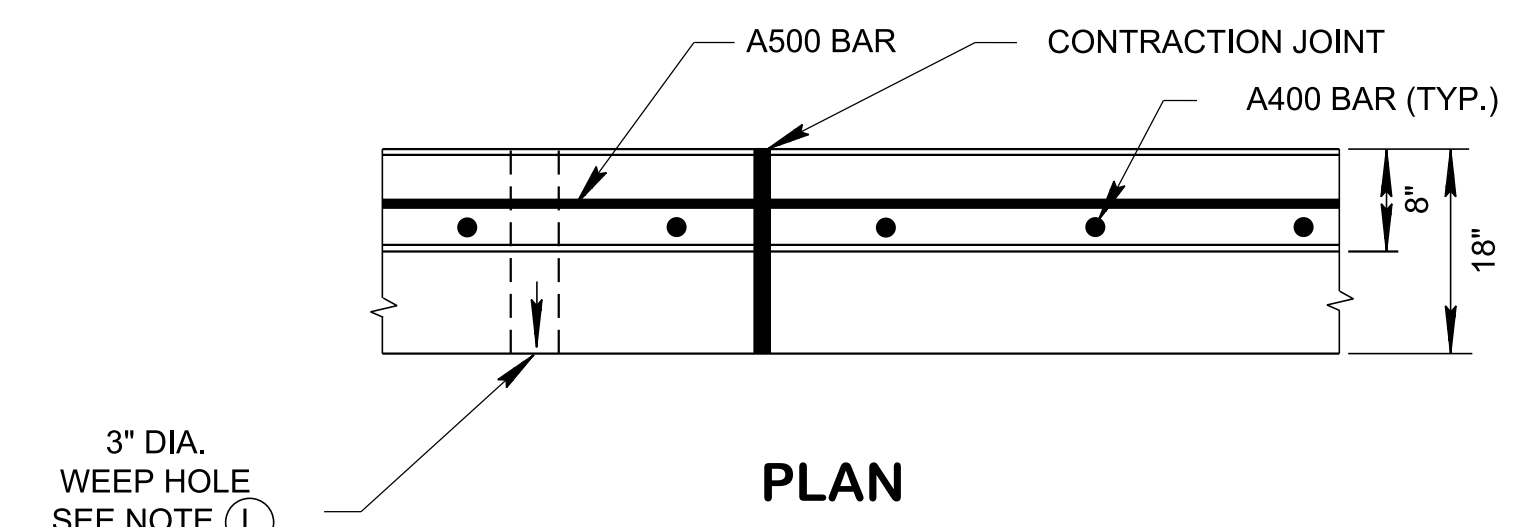
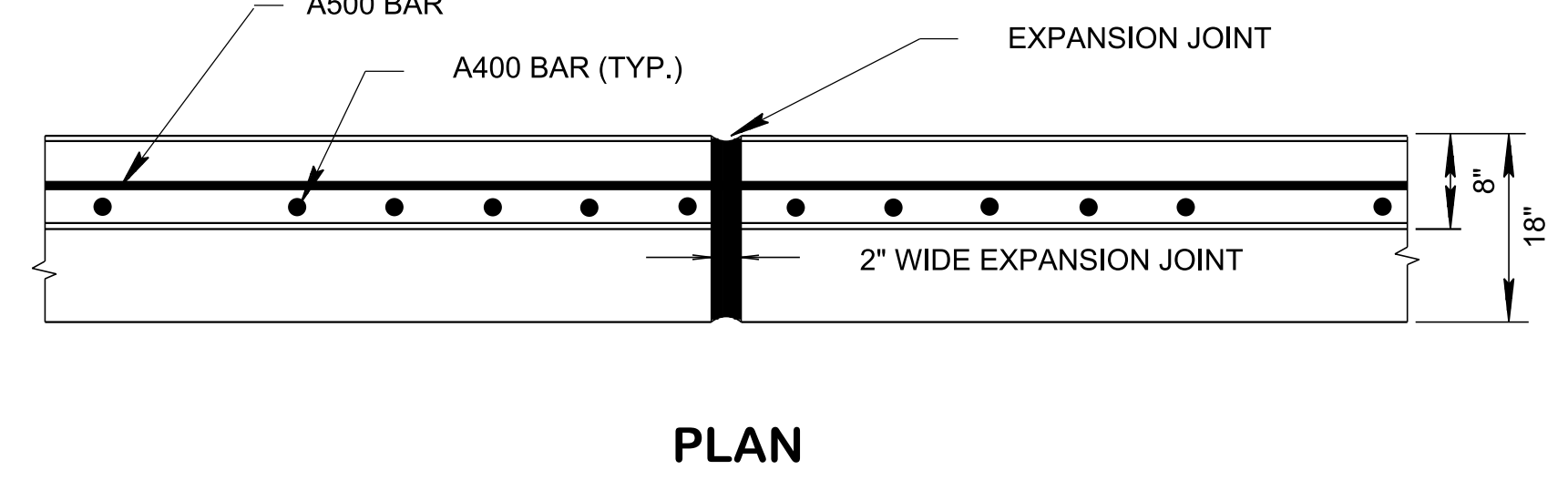


11/2/2021 9:53:02 AM  
 P:\StandDraw\DESIGN STANDARDS\Standards Drawings Library\Standard Roadway Drawings - CURRENT\In Progress\10-106.00 Safety Design and Guardrails IPY106.09 Concrete Median Barriers IPYSSMB3-20



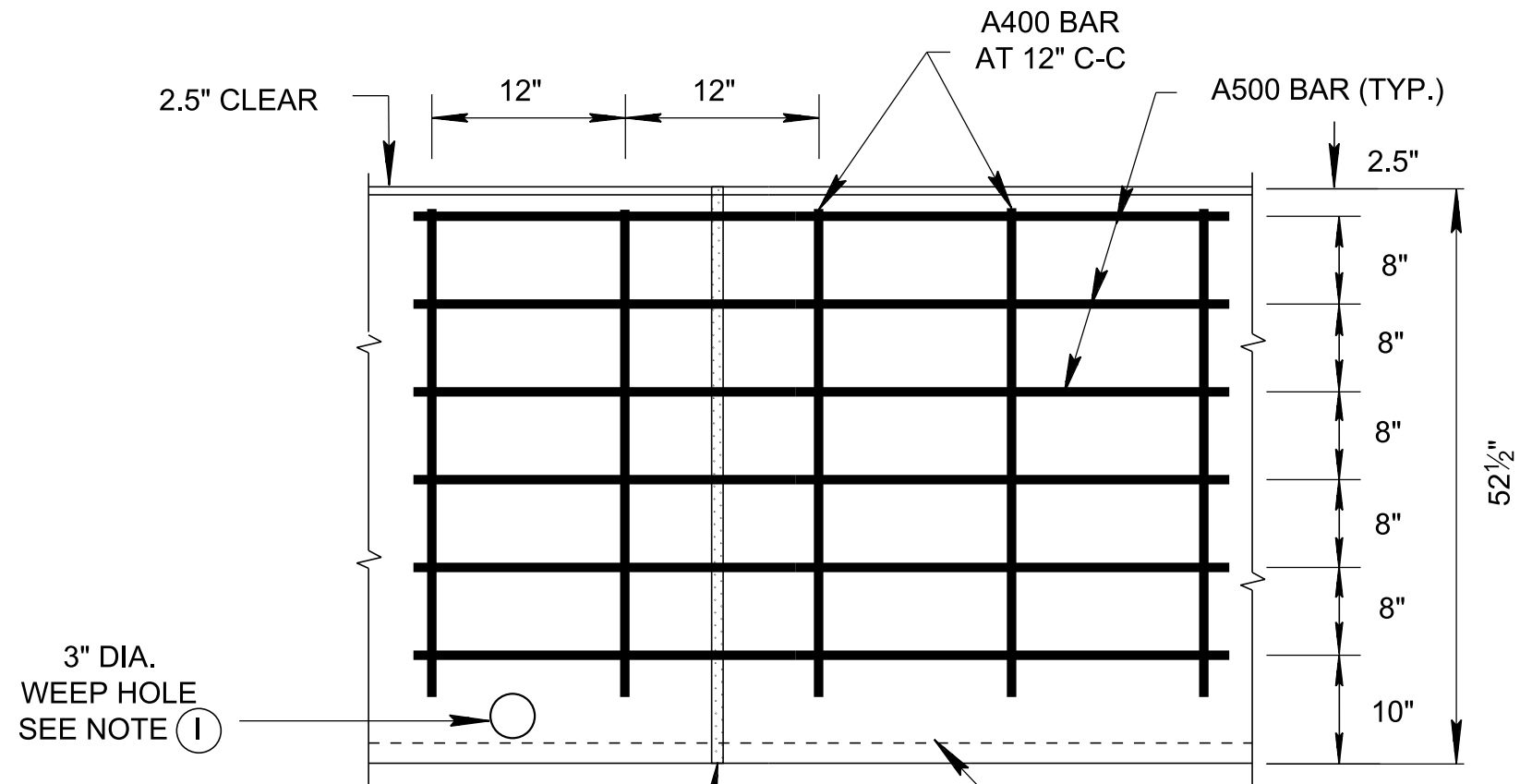
**PLAN**



**PLAN**

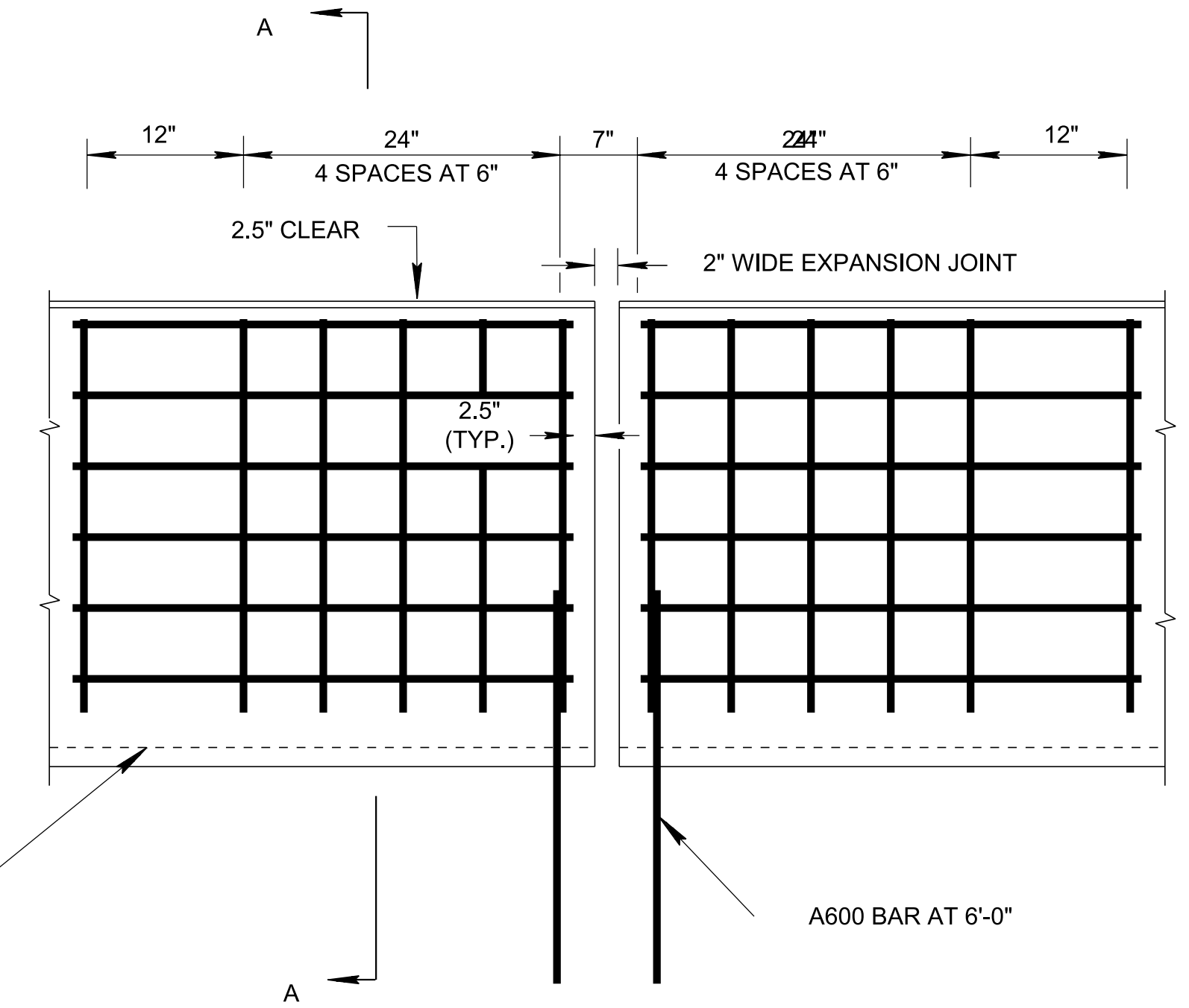
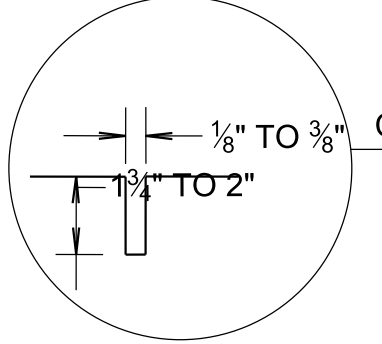
NOTE: ALL A400, A500, AND A600 REINFORCING STEEL BARS ARE TO BE EPOXY COATED MEETING ALL REQUIREMENTS OF ASTM D3963.

REINFORCING STEEL LEGEND	
47.5"	A400
VARIABLE	A500
48"	A600



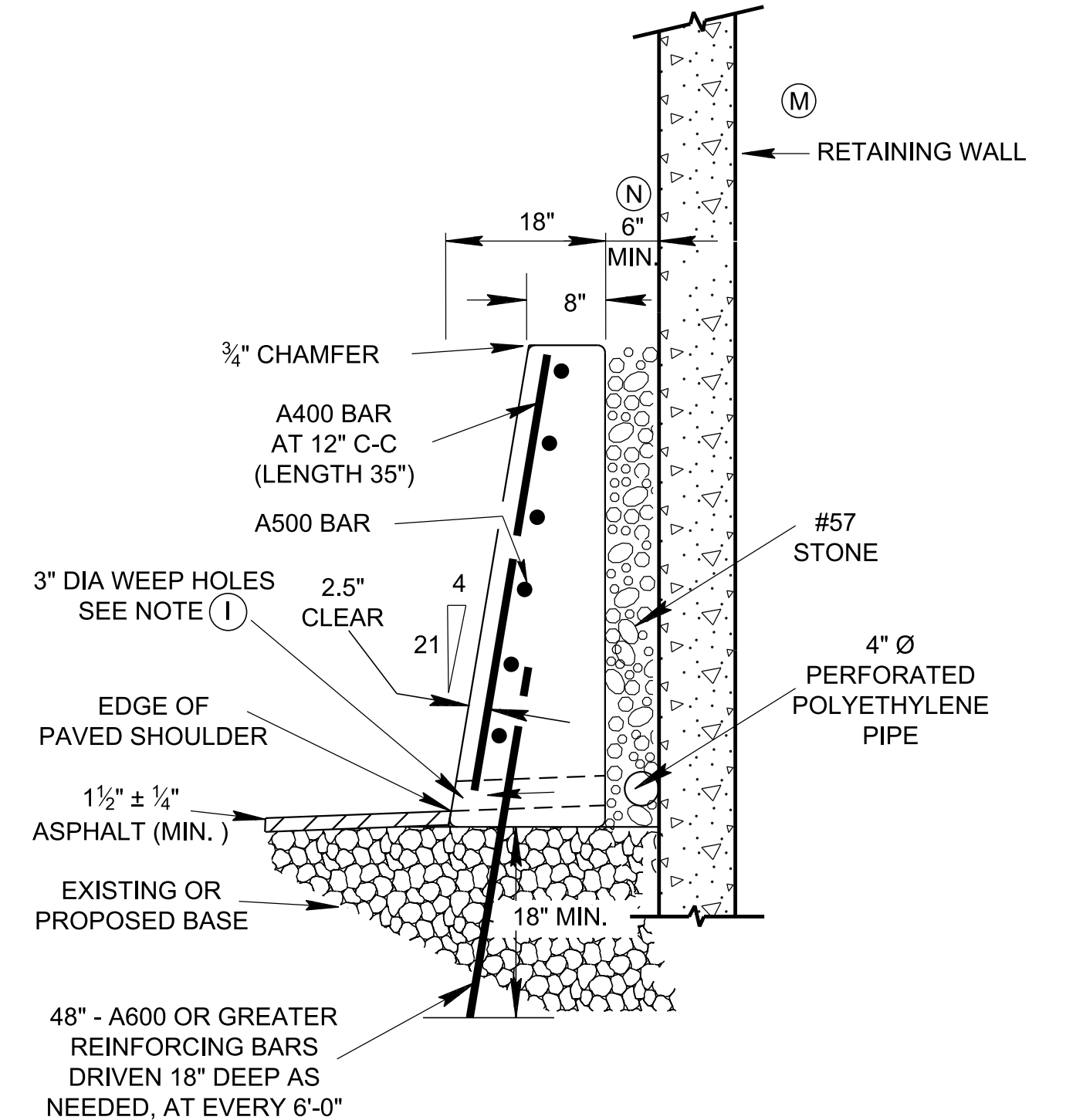
**ELEVATION**

**DETAILS OF REINFORCING AT CONTRACTION JOINT FOR CONCRETE BARRIER**

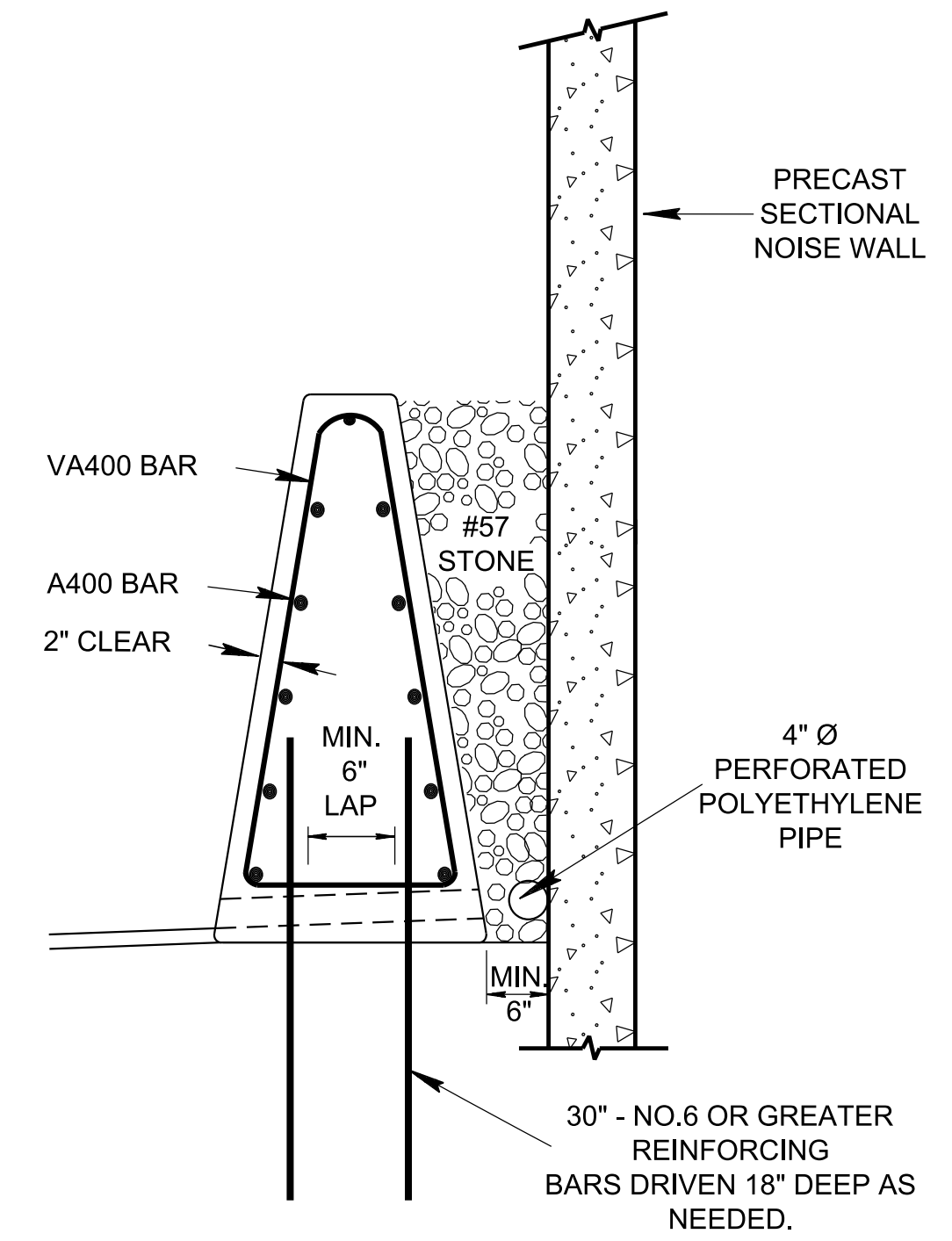


**ELEVATION**

**DETAILS OF REINFORCING AT WALL ENDS OR EXPANSION JOINT FOR CONCRETE BARRIER**



**REINFORCING STEEL AT SECTION A-A (AT RETAINING WALL)**



**TYPICAL TREATMENT FOR BARRIER WALL AT PRECAST SECTIONAL NOISE WALL**  
(SEE S-SSMB-2)

**GENERAL NOTES**

- (A) HALF SIZE SINGLE SLOPE CONCRETE BARRIER WALL IS TO BE USED IN CONJUNCTION WITH NOISE BARRIER OR RETAINING WALL INSIDE THE CLEAR ZONE AS SHOWN ON THIS DRAWING.
- (B) CONCRETE BARRIER WALL SHALL BE CONSTRUCTED IN ACCORDANCE WITH STANDARD SPECIFICATIONS FOR ROAD AND BRIDGE CONSTRUCTION, SECTION 711 AND/OR CURRENT SPECIAL PROVISIONS.
- (C) CONCRETE:  $F_c = 3,000$  POUNDS PER SQUARE INCH AT 28 DAYS  
REINFORCING STEEL: ASTM A615,  $F_y = 60,000$  POUNDS PER SQUARE INCH  
ALL REINFORCING IS TO BE INSTALLED AS DETAILED ON THIS DRAWING.
- (D) THE CONCRETE BARRIER WALL SHALL BE GIVEN AN APPLIED TEXTURE FINISH. THE COLOR OF THE FINISH SHALL BE WHITE, FEDERAL SPECIFICATION NO. 37886. THE COST OF MATERIALS AND LABOR FOR THE TEXTURE FINISH SHALL BE INCLUDED IN THE BID PRICE FOR CONCRETE MEDIAN BARRIER.
- (E) THE TWO (2) INCH OPEN EXPANSION JOINTS SHALL BE PLACED IN THE PROPOSED SINGLE SLOPE BARRIER WALL AT A MAXIMUM SPACING NOT TO EXCEED 300 FEET. IF FIXED OBJECTS SUCH AS BRIDGE PIERS, BRIDGE ENDS, OVERHEAD SIGN SUPPORTS, OR OTHER FEATURES PROJECTING THROUGH, INTO OR AGAINST THE BARRIER EXIST THAT REQUIRE TWO INCH EXPANSION JOINTS, THEN THE DISTANCE BETWEEN THE EXPANSION JOINTS IS TO BE REDUCED IN ORDER TO ALLOW AN EQUAL DISTANCE BETWEEN JOINTS THAT IS LESS THAN 300 FEET. ALL ADDITIONAL STEEL REQUIRED AT EXPANSION JOINTS TO BE EPOXY COATED REINFORCING STEEL. THE COST OF MATERIAL AND LABOR FOR THE JOINT INSTALLATION INCLUDING SAWING EXPANSION JOINTS SHALL BE INCLUDED IN THE BID PRICE FOR CONCRETE MEDIAN BARRIER.
- (F) THE CONTRACTION JOINTS ARE TO BE SPACED AT 20 TO 25 FOOT INTERVALS WHEN CONSTRUCTED ON ASPHALT PAVEMENT. WHEN THE CONCRETE BARRIER WALL IS ATTACHED TO CONCRETE PAVEMENT THE CONTRACTION JOINTS WILL RESPOND TO THE JOINTS IN THE CONCRETE PAVEMENT. THE COST OF MATERIAL AND LABOR FOR THE JOINT INSTALLATION SHALL BE INCLUDED IN THE BID PRICE FOR CONCRETE MEDIAN BARRIER. IF SAWED CONTRACTION JOINTS ARE USED, THE JOINTS MUST BE SAWED WITHIN FOUR (4) HOURS AFTER THE CONCRETE IS PLACED.
- (G) THE COST OF FURNISHING AND INSTALLING BARRIER WALL DELINEATORS, INCLUDING ALL MATERIALS, LABOR AND INCIDENTALS NECESSARY TO COMPLETE THE INSTALLATION, SHALL BE INCLUDED IN PRICE BID FOR CONCRETE BARRIER WALL. SEE STANDARD DRAWING T-M-18A FOR DELINEATOR MOUNTING DETAILS. BARRIER WALL DELINEATOR WILL NOT BE REQUIRED IN AREAS WHERE ROADWAY IS LIGHTED.
- (H) CHAMFER ALONG TOP EDGES 3/4".
- (I) FOR CONCRETE PAVEMENT: ANY METHOD DEvised BY THE CONTRACTOR AND APPROVED BY THE ENGINEER THAT WILL ASSURE THE LONGITUDINAL ROADWAY REINFORCING STEEL WILL BE FIXED AGAINST MOVEMENT AND POSITIONED  $\pm 0.5$ " AS DIMENSIONED WHEN TIED TO THE TRANSVERSE ROADWAY REINFORCING STEEL WILL BE SATISFACTORY.
- (J) 3" DIAMETER WEEP HOLES AT 10'-0" CENTER-TO-CENTER MAXIMUM ARE TO BE PLACED AT LOWEST POINT PRACTICAL FOR PROPER DRAINAGE WITH MIN. 4% SLOPE. WEEP HOLES SHOULD ALIGN WITH THE RETAINING WALL WEEP HOLES IF EXIST. CONSTRUCTION OF WEEP HOLES ARE TO BE PAID FOR UNDER THE PRICE BID FOR OTHER ITEMS OF CONSTRUCTION.
- (K) FIBER EXPANSION JOINT FILLER MATERIAL TO BE 0.5" OR 1.0" PREMOLDED FIBER IN ACCORDANCE WITH SECTION 905 OF STANDARD SPECIFICATIONS.
- (L) PAYMENT WILL BE MADE UNDER ITEM NO.:  
711-05.72, SINGLE SLOPE HALF CONCRETE BARRIER WALL, L.F.
- (M) MIN. SAFETY PERFORMANCE OF 52 1/2" SINGLE TO THE TL-3 EVALUATION CRITERIA SPECIFIED IN NCHRP REPORT 350. SEE TTI STUDY TPF-5(114).
- (N) DO NOT USE HALF SIZE WALL WITH PRECAST SECTIONAL NOISE WALL SEE S-SSMB-2.
- (O) FOR MSE RETAINING WALL OFFSET MAY BE 18" FOR CONCRETE RETAINING WALL OFFSET SHALL BE 6".

- REV. 7-30-10: REVISED REINFORCING STEEL DETAILS AND GENERAL NOTES.
- REV. 1-15-13: REVISED SECTION A-A, ADDED WALL AT PRECAST NOISE WALL DETAIL.
- REV. 7-16-13: ADDED 12" GAP AT NOISE WALL AND EDITED NOTE N.
- REV. 05-01-20: REDREW SHEET.
- REV. 10-29-2021: REVISED # 57 STONE FILL WIDTH ON SECTIONS. GENERAL NOTES (I) AND (N) WERE REVISED.

APPROVED BY FHWA  
(ALL OTHERS APPROVED BY TDOT)

STATE OF TENNESSEE  
STANDARD DRAWING  
DEPARTMENT OF TRANSPORTATION

51"  
HALF SIZE  
SINGLE SLOPE  
CONCRETE  
BARRIER WALL