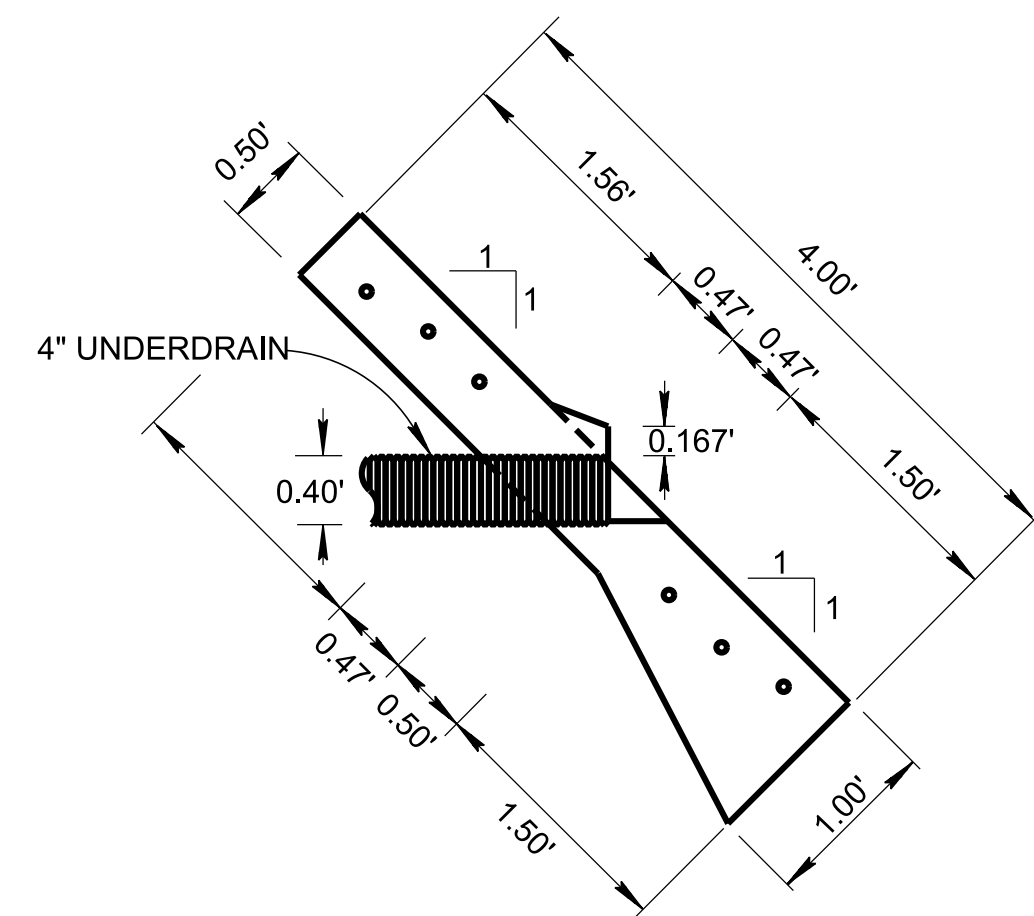
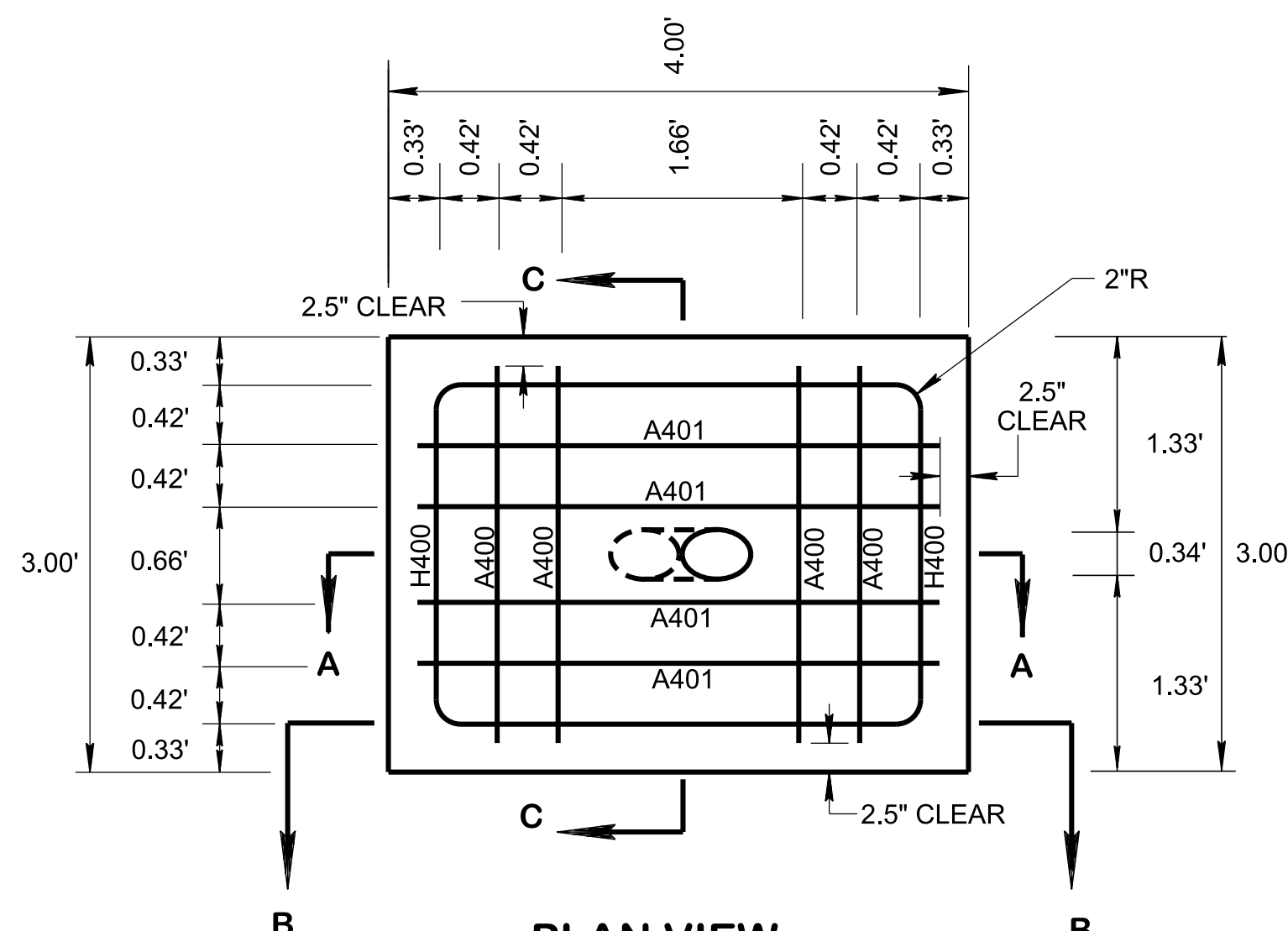


LATERAL UNDERDRAIN ENDWALL DETAIL FOR 1:1 SLOPES

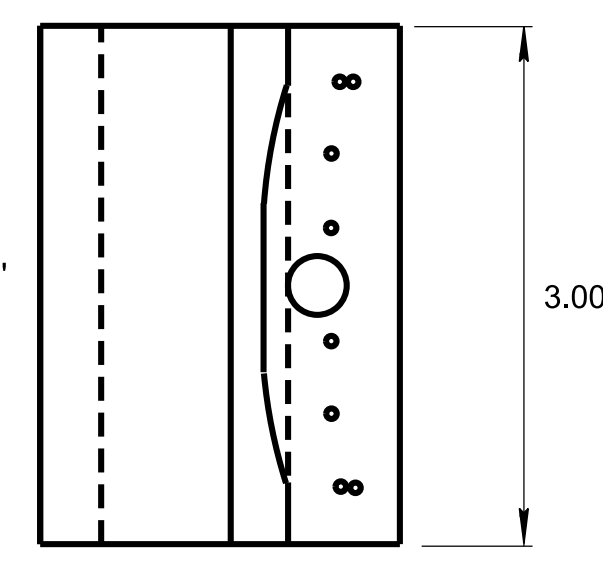
(ITEM NO. 710 - 06.10)



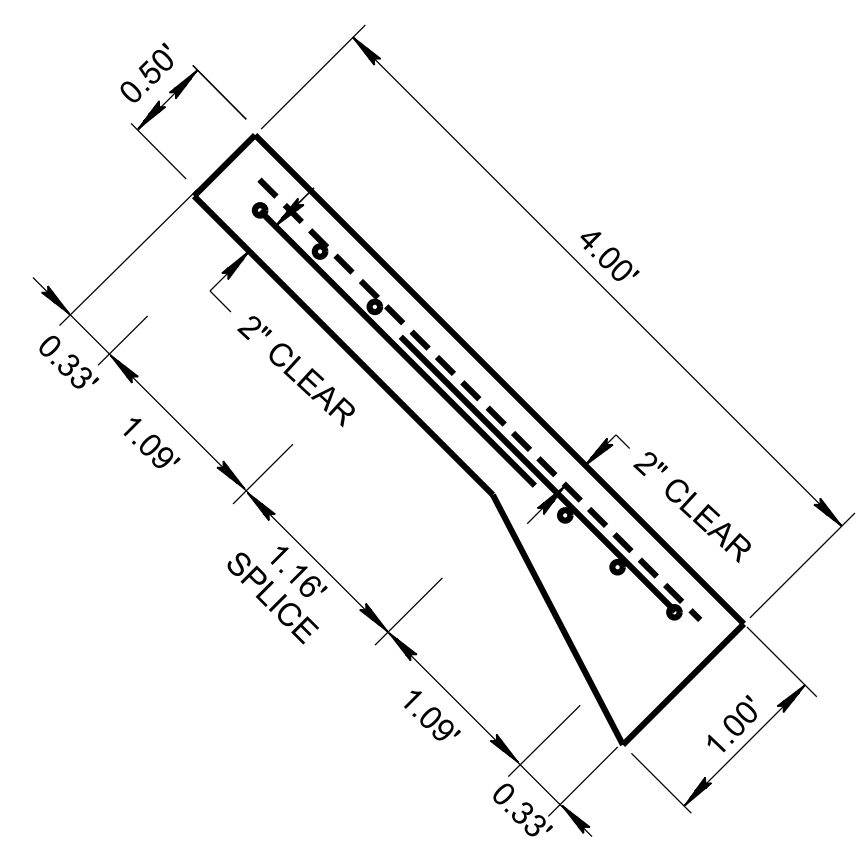
SECTION A - A



PLAN VIEW

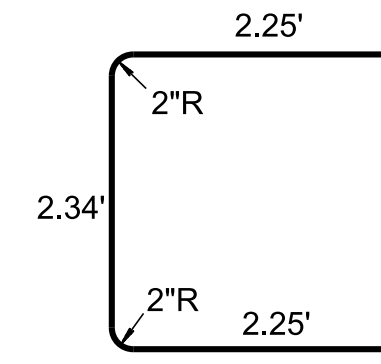


SECTION C - C

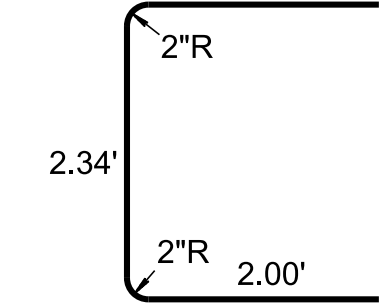


SECTION B - B

A400 SERIES
(SEE TABLE FOR LENGTH)



H400
2.00'



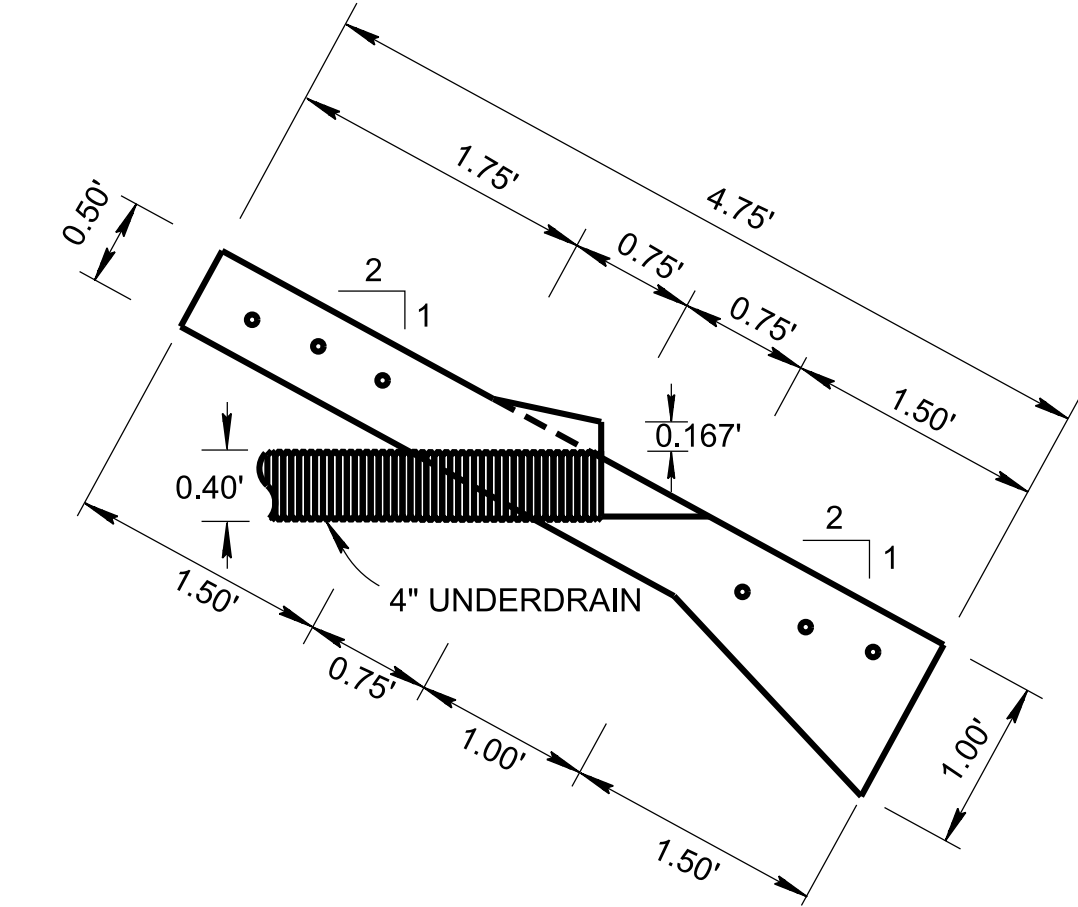
H401

STEEL REINFORCING BAR TABLE

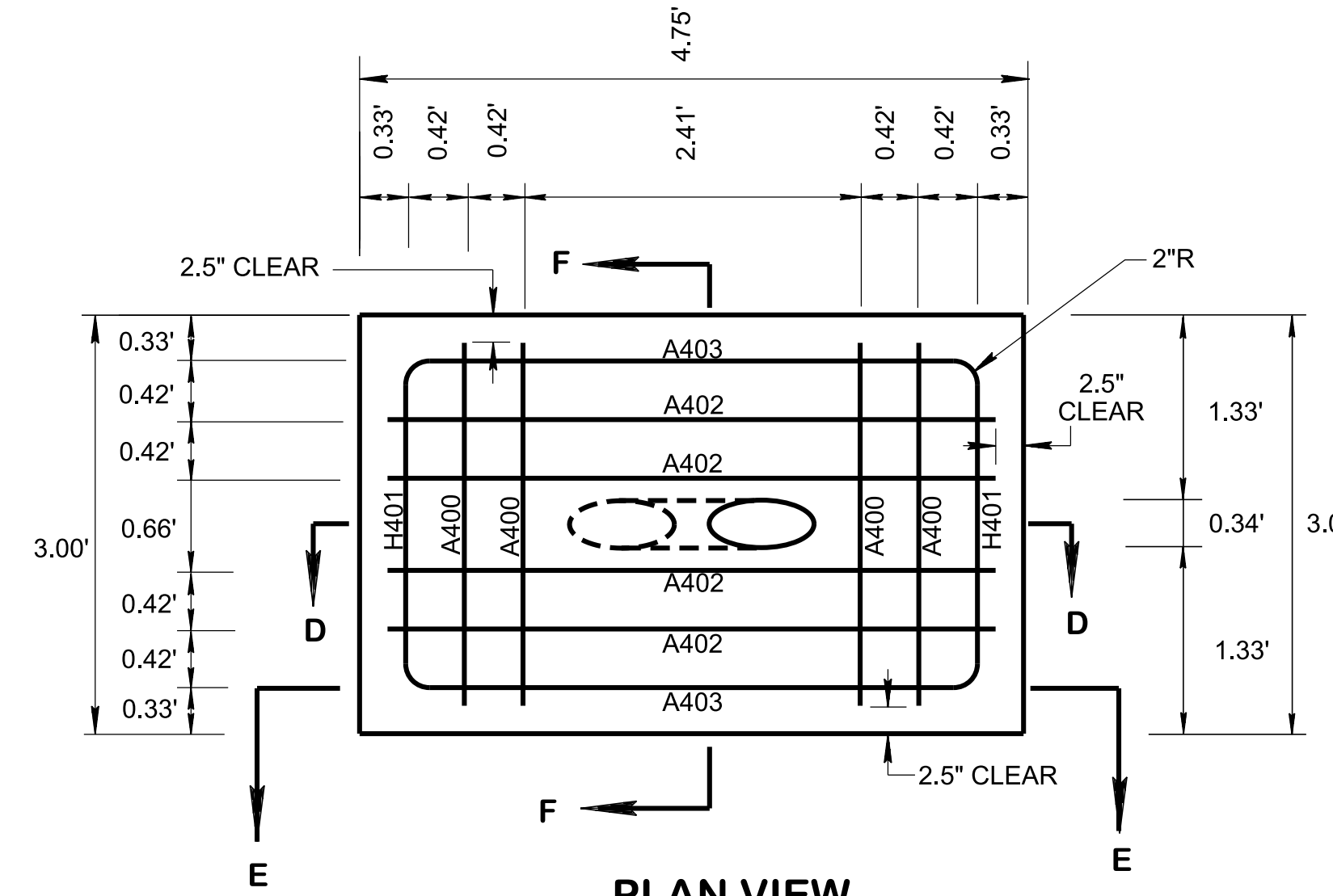
A400 SERIES	
CODE	LENGTH
A400	2.58'
A401	3.58'
A402	4.33'
A403	2.25'
A404	5.08'
A405	3.00'
A406	6.33'
A407	4.59'
A408	7.83'
A409	6.09'
A410	9.08'
A411	7.34'

LATERAL UNDERDRAIN ENDWALL DETAIL FOR 2:1 SLOPES

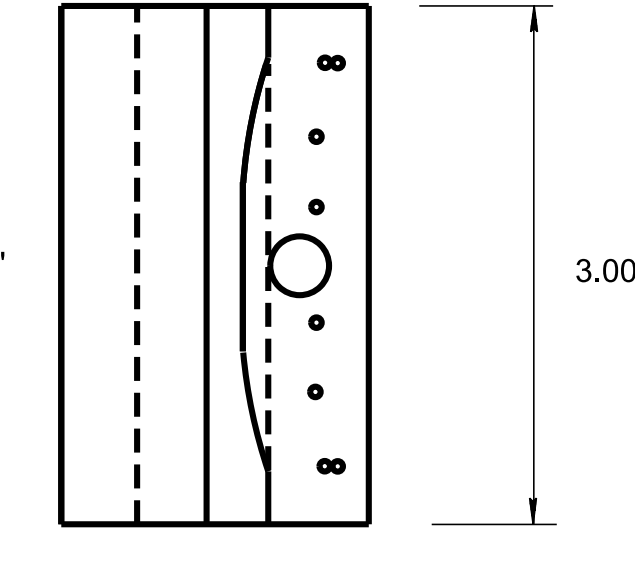
(ITEM NO. 710 - 06.11)



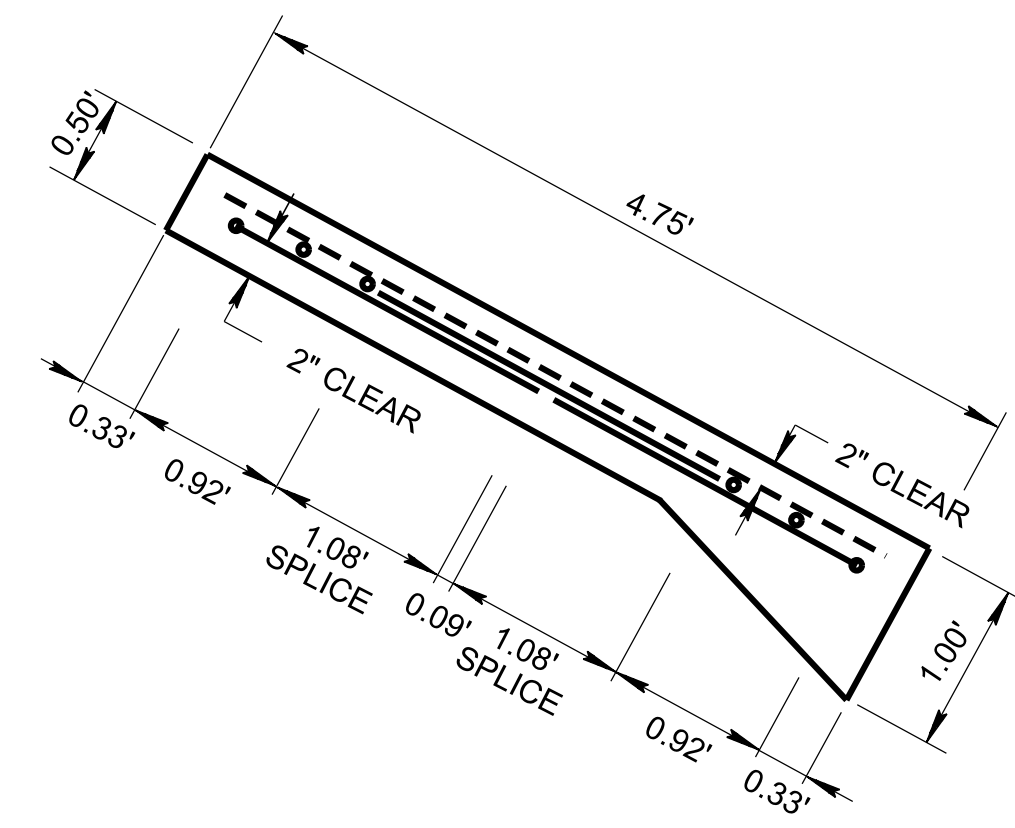
SECTION D - D



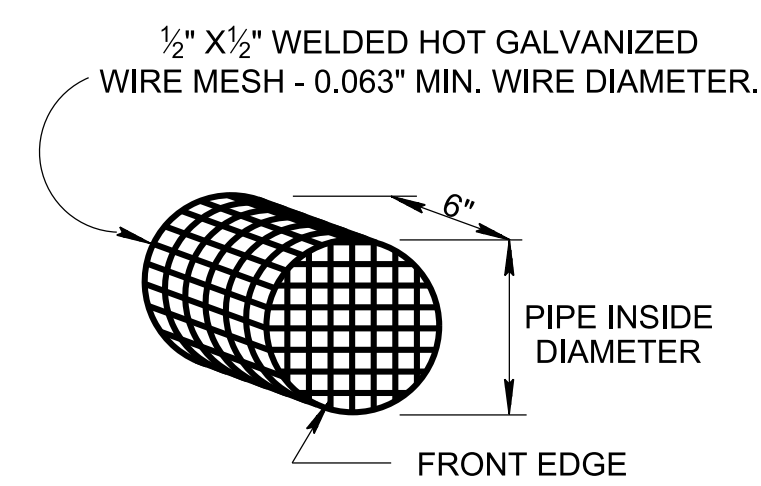
PLAN VIEW



SECTION F - F



SECTION E - E



DETAIL OF RODENT SCREEN

- ① INSTALL FRONT EDGE OF RODENT SCREEN 6 INCHES UP INTO PIPE.
- ② TO BE INCLUDED IN THE PRICE BID FOR THE LATERAL ENDWALL.

REV. 12-18-94: ADDED UNDERDRAIN PIPE TO LATERAL ENDWALL DETAILS AND ADDED A410 AND A411 BARS TO A400 SERIES TABLE.

REV. 06-28-19: REDREW SHEET.

MINOR REVISION -- FHWA APPROVAL NOT REQUIRED

STATE OF TENNESSEE
STANDARD DRAWING
DEPARTMENT OF TRANSPORTATION

LATERAL UNDERDRAIN ENDWALL DETAIL FOR 1:1 & 2:1 SLOPES

MATERIAL SPECIFICATIONS

- (A) FOR SPECIFICATIONS SEE "STANDARD SPECIFICATION FOR ROAD AND BRIDGE CONSTRUCTION" OF THE TENNESSEE DEPARTMENT OF TRANSPORTATION.
- (B) ALL CONCRETE TO BE CLASS "A" CONCRETE $F_c = 3,000$ POUNDS PER SQUARE INCH AT 28 DAYS.
- (C) ALL REINFORCING STEEL TO MEET ASTM A615 SPECIFICATION, $F_y = 60,000$ POUNDS PER SQUARE INCH.

9/9/2019 11:59:32 AM P:\StandDraw\DESIGN STANDARDS\Standards Drawings Library\Standard Roadway Drawings - CURRENT\In Progress\100.00 Roadway Design Standards IP\100.08 Underdrains IP\RDUD6-20190628.dgn