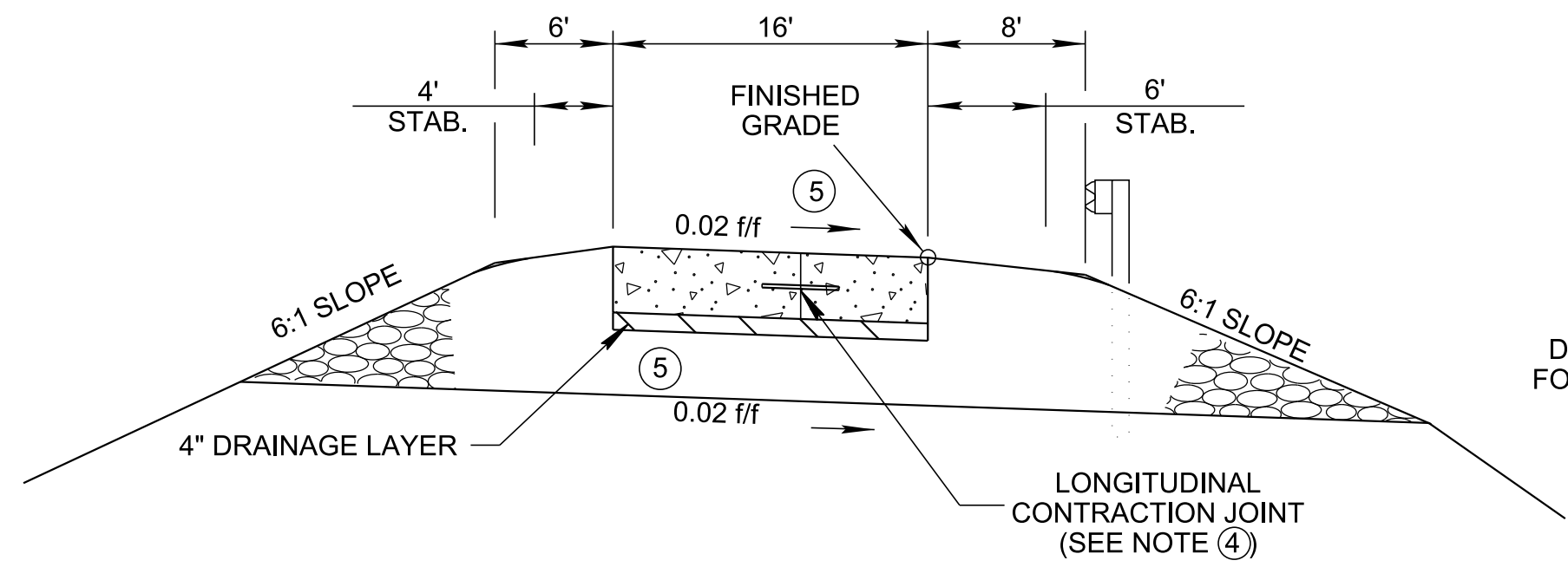
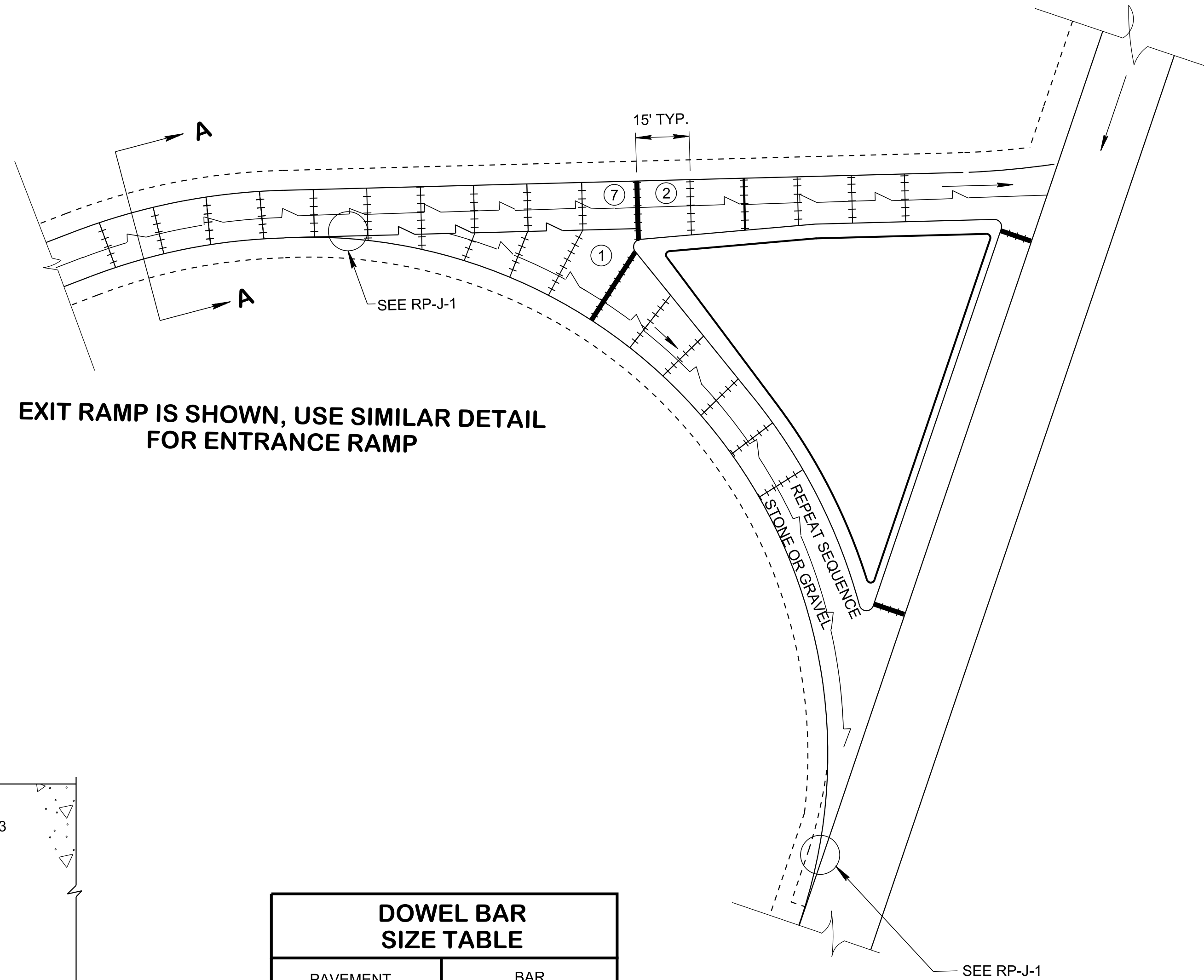


4/15/2020 2:30:43 PM P:\StandDraw\DESIGN STANDARDS\Standards Drawings\Standard Roadway Drawings - CURRENT\In Progress\10-104.00 Roadway, Pavement Appurtenances and Fence IP\104.01 Concrete Pavement IP\RP

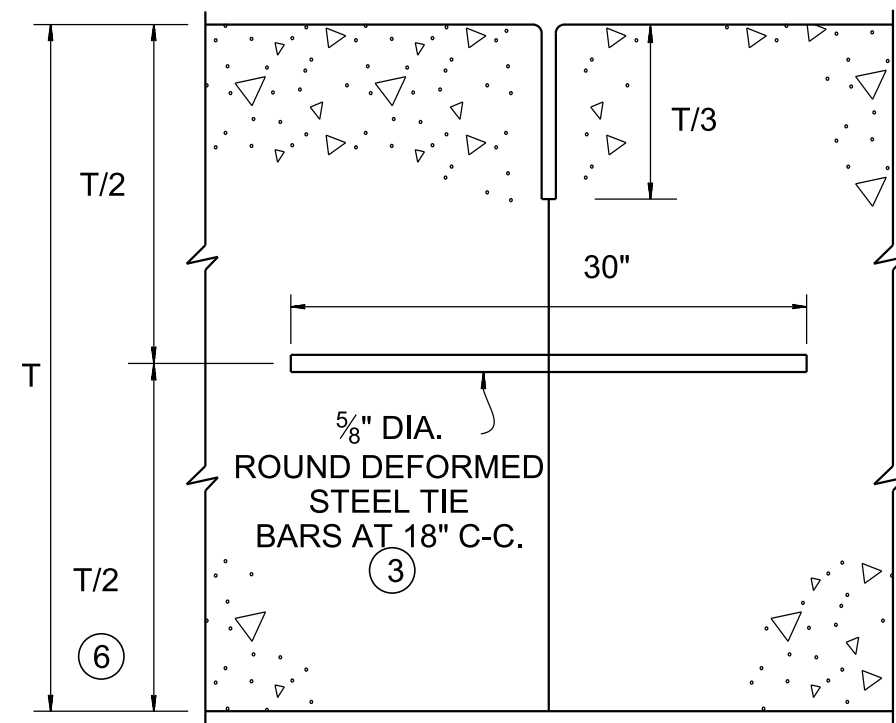


SECTION A-A

SEE STANDARD DRAWING NO. RP-J-5 FOR DETAILS AT NOSE.

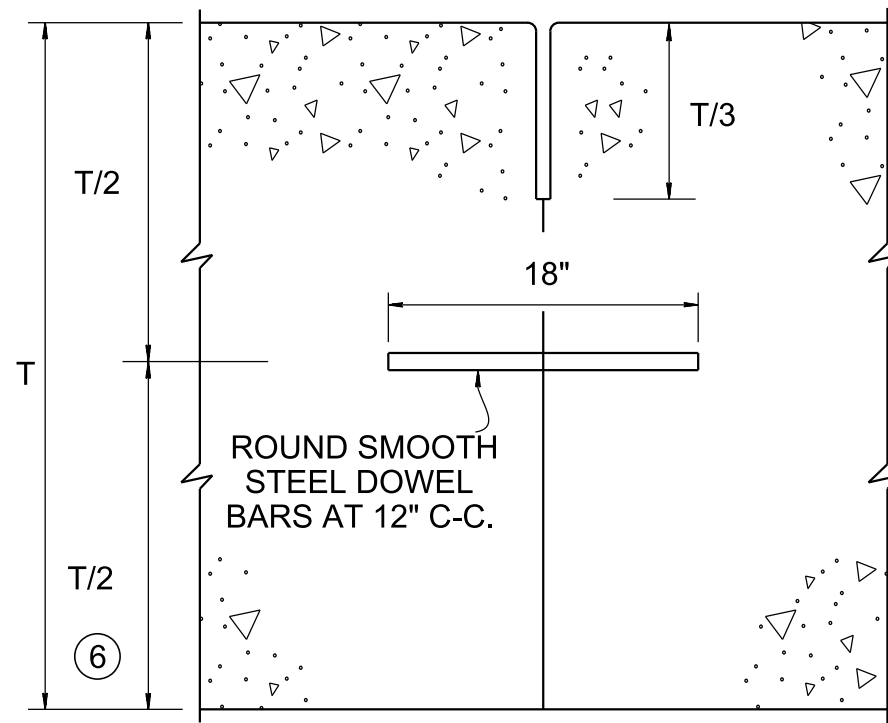


EXIT RAMP IS SHOWN, USE SIMILAR DETAIL FOR ENTRANCE RAMP



TIE BAR DETAIL FOR LONGITUDINAL CONTRACTION JOINTS

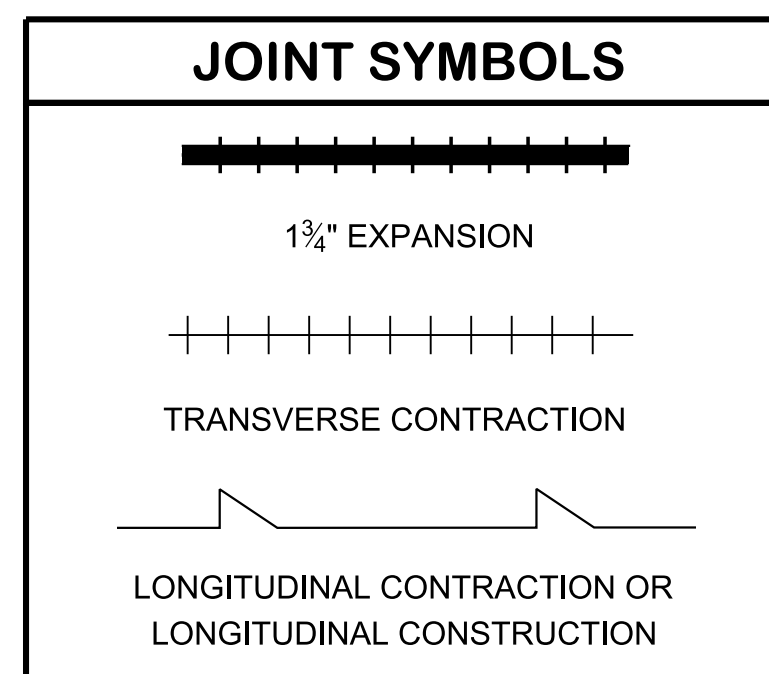
FOR JOINT SEAL DETAILS SEE DRAWING RP-J-15



DOWEL BAR DETAIL FOR TRANSVERSE CONTRACTION JOINTS

FOR JOINT SEAL DETAILS SEE DRAWING RP-J-9

DOWEL BAR SIZE TABLE	
PAVEMENT THICKNESS (T)	BAR DIAMETER (IN)
8" TO 10"	1 1/4"
> 10"	1 1/2"



- REV. 1-31-83: ADDED JOINT SKEW NOTE.
- REV. 6-23-88: DELETED JOINT SKEW.
- REV. 3-20-91: REDREW SHEET AND CHANGED JOINT SPACING FOR CONCRETE PAVEMENT USING STONE. ADDED FOOTNOTE NO. (3).
- REV. 12-18-94: CHANGED DRAWING REFERENCE NUMBER IN CROSS-REFERENCE BLOCK.
- REV. 10-26-00: CHANGED VARIABLE JOINT SPACING TO 15' CONSTANT.
- REV. 1-30-12: ADDED LONGITUDINAL CONTRACTION JOINT DETAILS.
- REV. 7-14-14: UPDATED DOWEL BAR DETAIL.
- REV. 05-01-20: REVISED SECTION A-A. REDREW SHEET.

CROSS-REFERENCE DRAWINGS FOR THIS DRAWING: RP-J-1, RP-J-5, RP-J-9, RP-J-11, RP-J-13, RP-J-15, RP-J-17, RP-J-18, AND RP-J-19.

APPROVED BY FHWA (ALL OTHERS APPROVED BY TDOT)

STATE OF TENNESSEE  
STANDARD DRAWING  
DEPARTMENT OF TRANSPORTATION

CONCRETE RAMP JOINT TYPES AND SPACING

RP-J-7

- FOOTNOTES**
- (1) SKEW JOINTS WITH TURNING RADII WHEN LENGTH OF JOINT IS GREATER THAN 8'.
  - (2) UNLESS OTHERWISE NOTED IN THE PLANS, THE TRANSVERSE CONTRACTION AND EXPANSION JOINTS SHALL BE SKEWED AT 90° TO THE ROADWAY CENTERLINE OR BASELINE.
  - (3) NO TIE BARS SHALL BE PLACED WITHIN 18" OF TRANSVERSE JOINT.
  - (4) LONGITUDINAL CONSTRUCTION JOINT MAY BE USED INSTEAD OF THE LONGITUDINAL CONTRACTION JOINT (RP-J-15).
  - (5) CONSTANT ROADWAY SLOPE SHOULD BE USED, INCLUDING ON SHOULDERS, REFER TO RD11-TS-4 FOR INFORMATION PERTAINING TO RAMP DESIGN.
  - (6) MAX. HORIZONTAL AND VERTICAL TOLERANCE FOR DOWEL AND TIE BARS IS 1".
  - (7) UNLESS OTHERWISE NOTED IN THE PLANS, THE LONGITUDINAL CONTRACTION JOINT IS TO END WHEN IT REACHES THE EXPANSION JOINT.

NOT TO SCALE