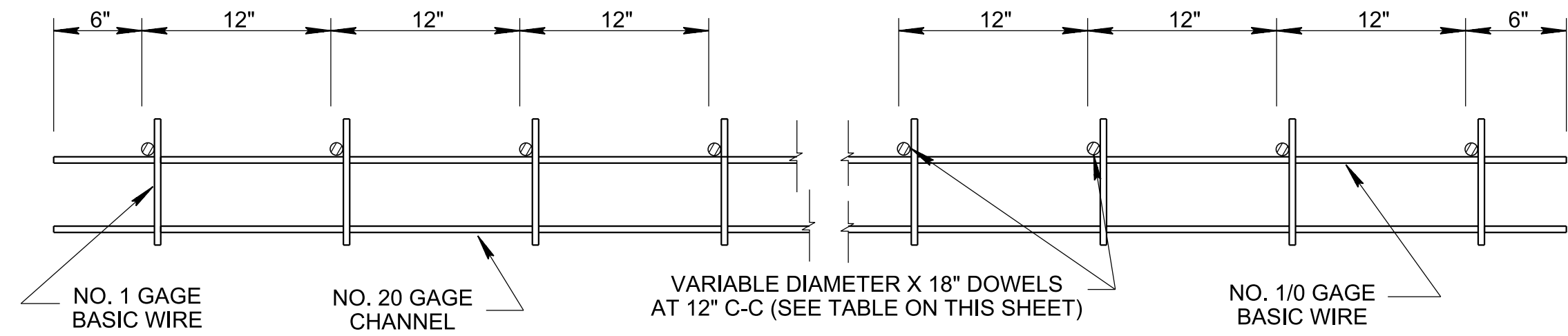
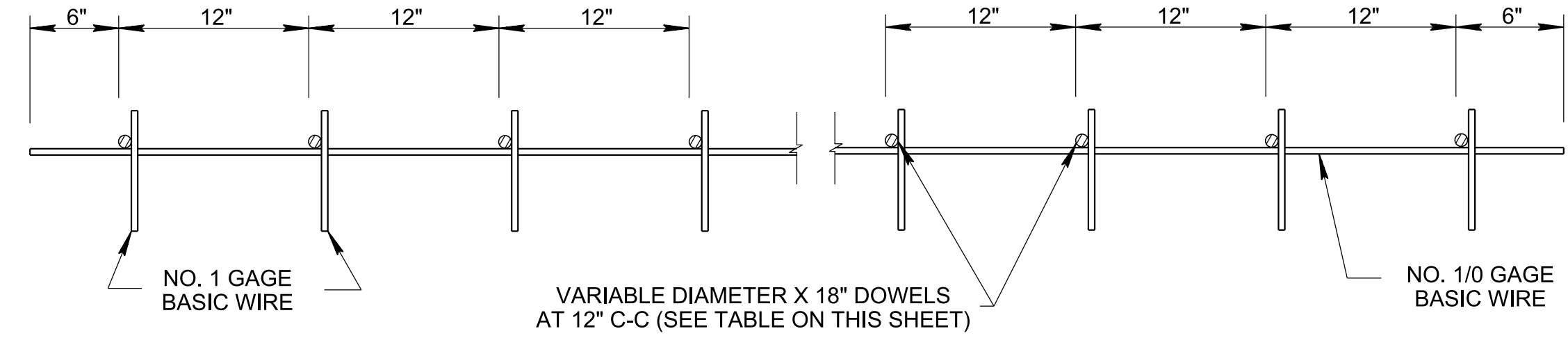


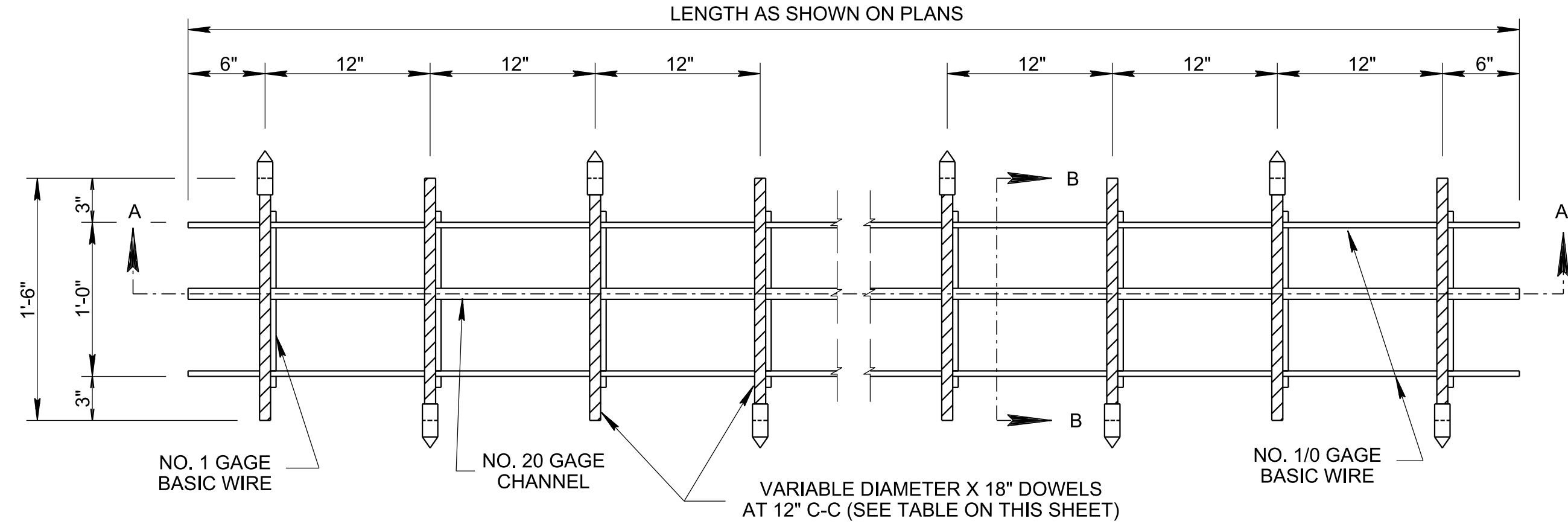
3/5/2020 1:45:40 PM
 \\AG03SDCWF00010.net.ads.state.tn.us\PROJECTS\Standard Drawings Folder\Working Folder for Eugene\Draft\140 ROADWAY AND PAVEMENT APPURTENANCES\104.01 Concrete Pavement\RPJ17-20200501



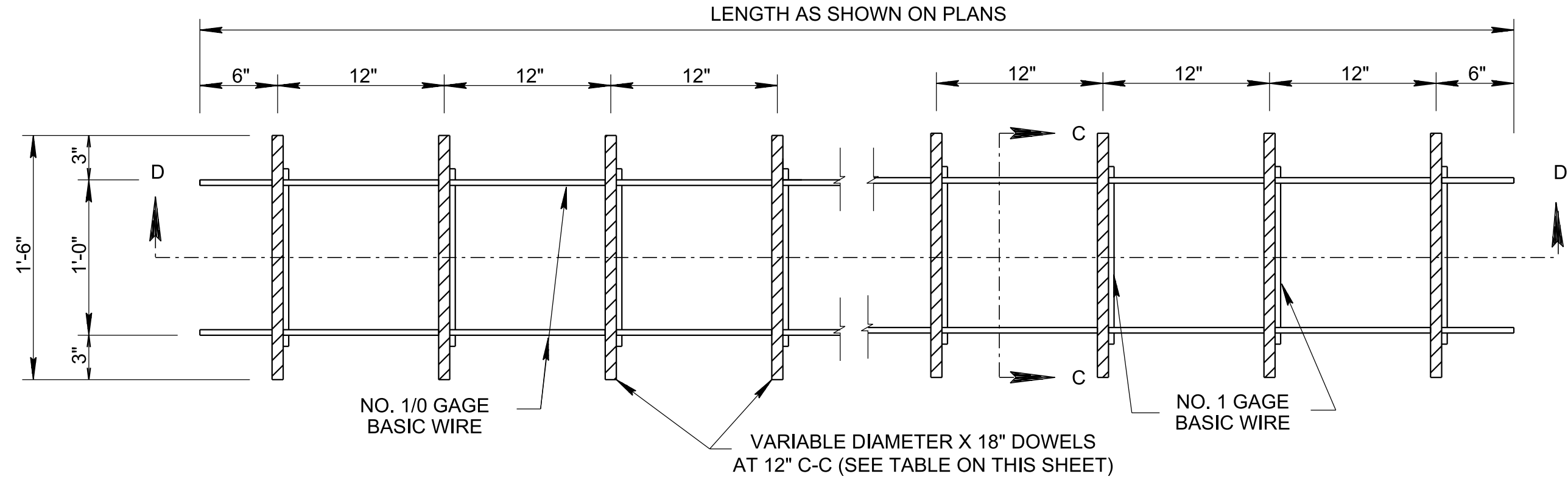
**SECTION A-A
(EXPANSION TYPE)**



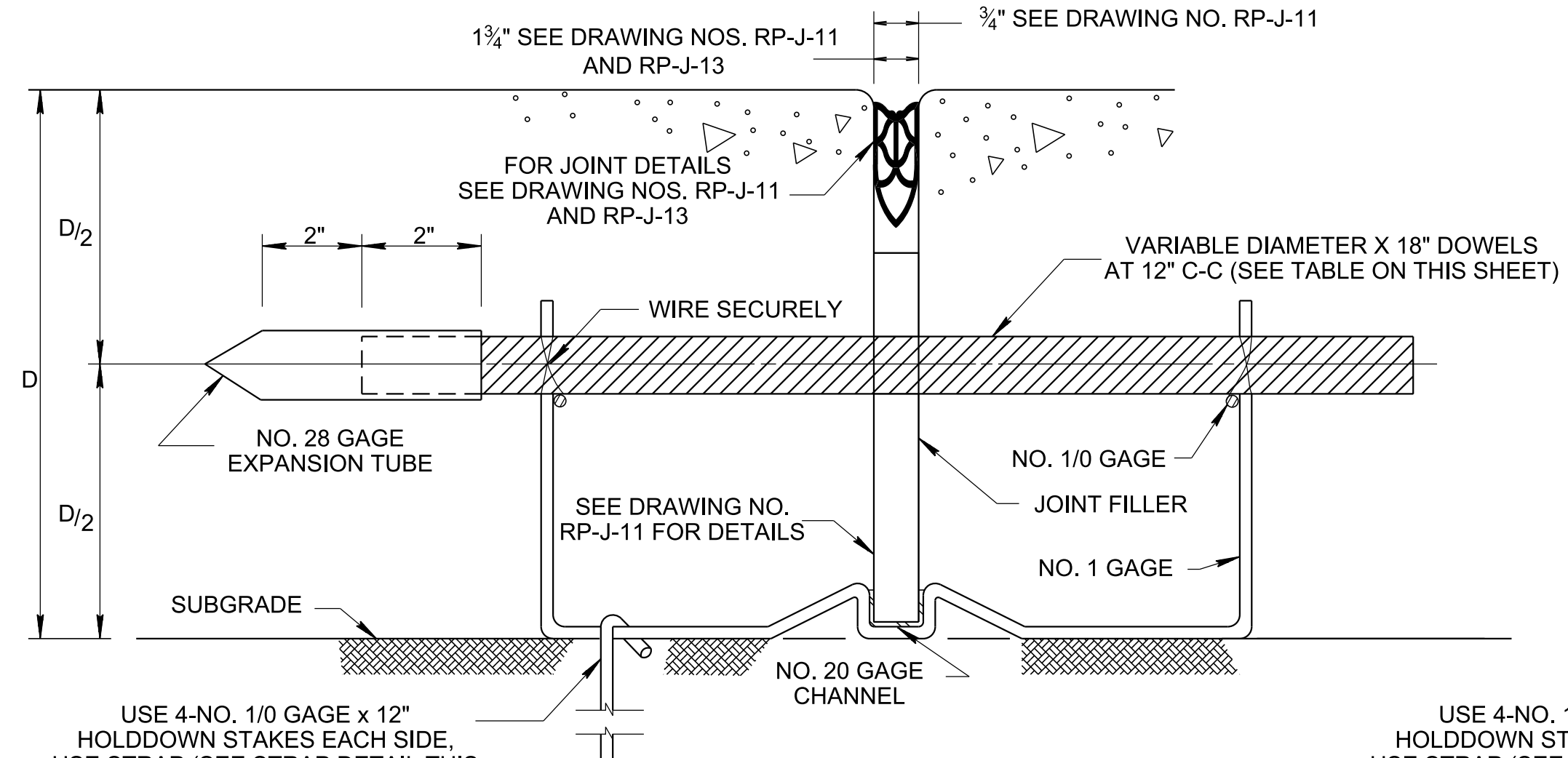
**SECTION D-D
(CONTRACTION TYPE)**



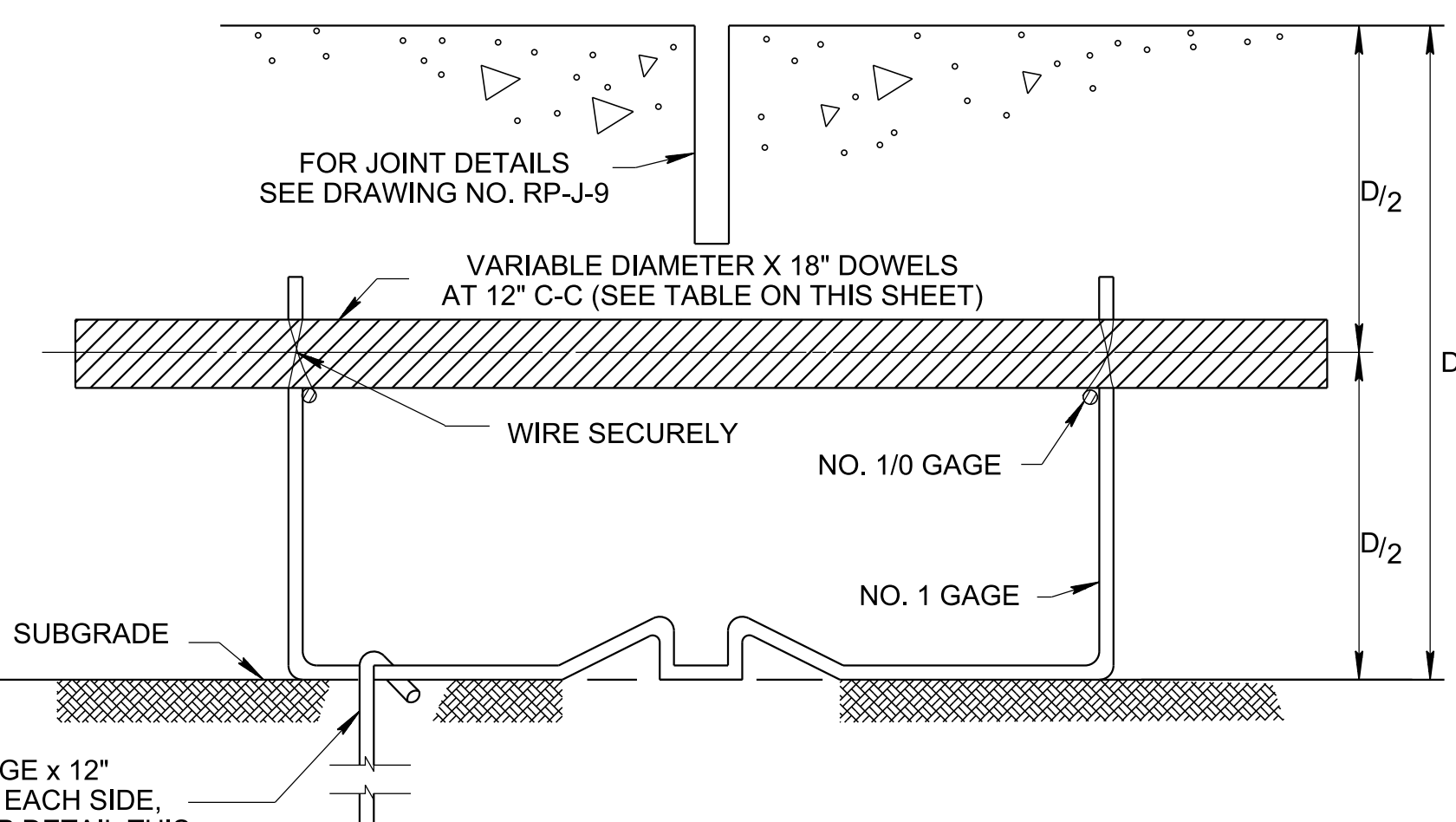
PLAN



PLAN



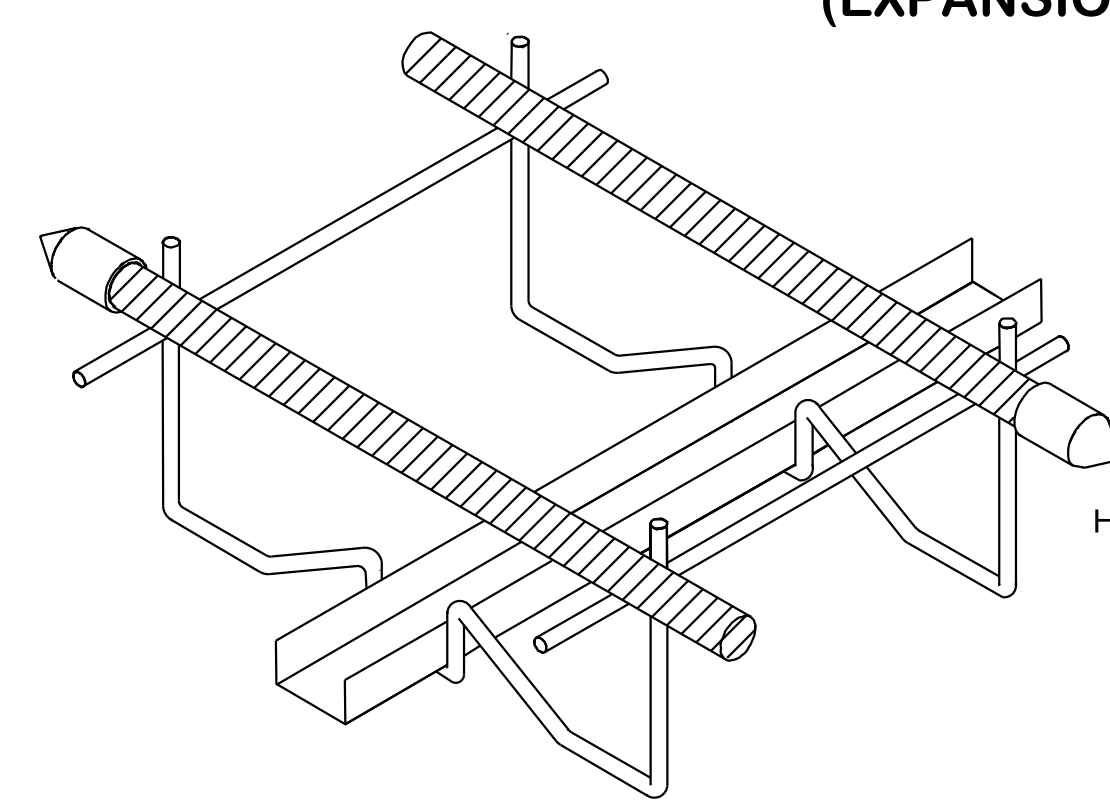
**SECTION B-B
(EXPANSION TYPE)**



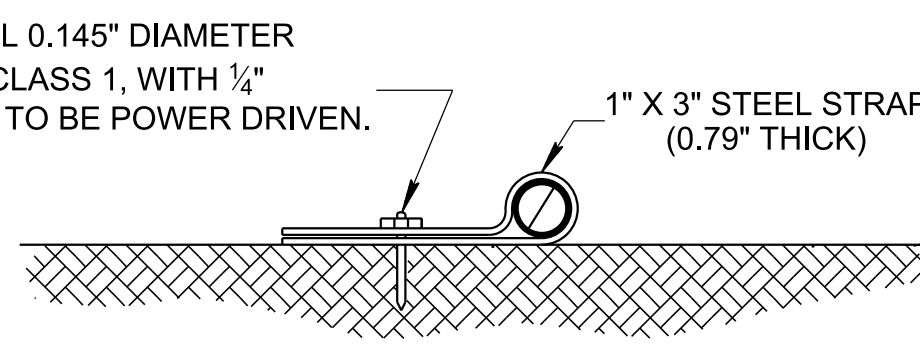
**SECTION C-C
(CONTRACTION TYPE)**

USE 4-NO. 1/0 GAGE x 12" HOLDDOWN STAKES EACH SIDE. USE STRAP (SEE STRAP DETAIL THIS DRAWING) OR USE SPECIAL STAKE (SEE STAKE DETAIL ON DRAWING NO. RP-J-19) AS NEEDED TO KEEP DOWEL ASSEMBLY FROM SHIFTING.

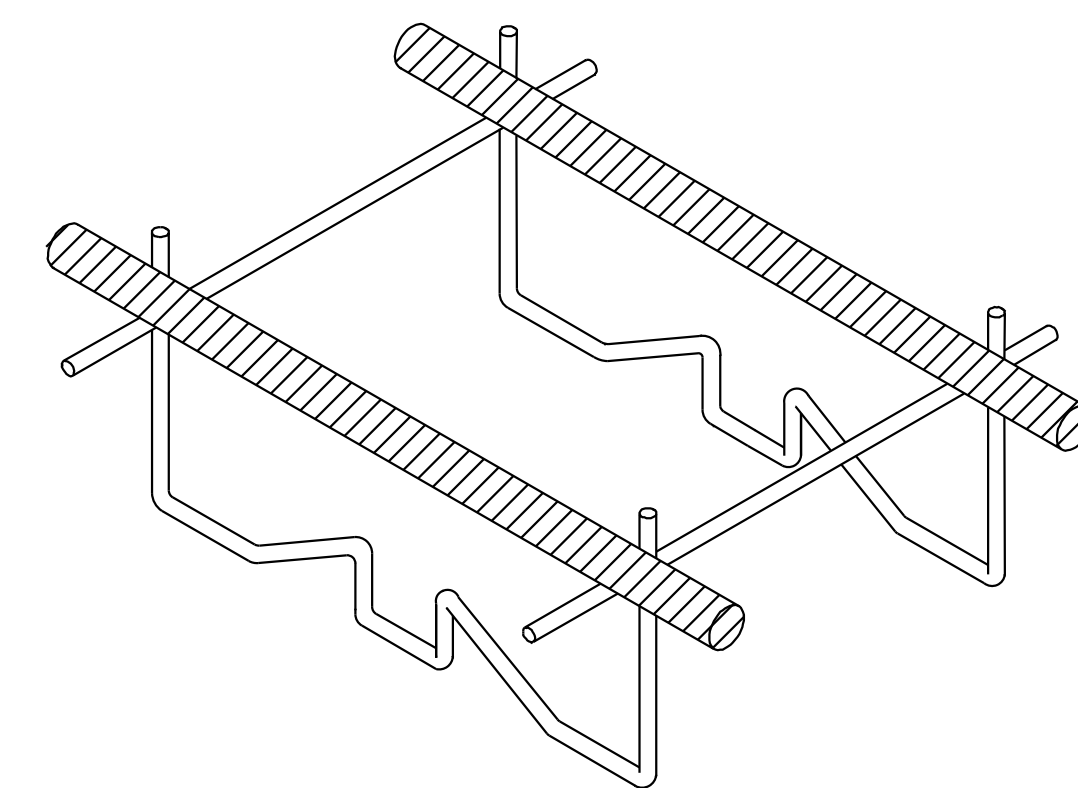
USE 4-NO. 1/0 GAGE x 12" HOLDDOWN STAKES EACH SIDE. USE STRAP (SEE STRAP DETAIL THIS DRAWING) OR USE SPECIAL STAKE (SEE STAKE DETAIL ON DRAWING NO. RP-J-19) AS NEEDED TO KEEP DOWEL ASSEMBLY FROM SHIFTING.



EXPANSION JOINT



STRAP DETAIL



CONTRACTION JOINT

DOWEL BAR SIZE TABLE	
PAVEMENT THICKNESS (INCHES)	BAR DIAMETER (INCHES)
8-10	1 1/4"
>10	1 1/2"

- GENERAL NOTES**
- (A) DOWEL ASSEMBLY DEVICES OTHER THAN SHOWN ON DRAWING NOS. RP-J-17, RP-J-18, AND RP-J-19 MAY BE USED FOR SUPPORTING DOWELS AT EXPANSION AND CONTRACTION JOINTS.
 - (B) DOWEL ASSEMBLY DEVICES SHALL BE SO CONSTRUCTED AS TO HOLD THE DOWEL BARS FIRMLY IN POSITION PARALLEL TO THE SURFACE AND CENTERLINE OF THE PAVEMENT SLAB DURING THE PLACING OF CONCRETE.
 - (C) DOWEL ASSEMBLY DEVICES SHALL BE OF SUCH DESIGN AS TO PERMIT UNRESTRICTED MOVEMENT OF THE PAVEMENT SLAB.
 - (D) DOWEL ASSEMBLY DEVICES TO BE USED MUST BE APPROVED BY THE ENGINEER PRIOR TO THEIR USE.
 - (E) SEE STANDARD SPECIFICATIONS FOR ROAD AND BRIDGE CONSTRUCTION, SECTION 501-PORTLAND CEMENT CONCRETE PAVEMENT FOR DOWEL ASSEMBLY DEVICES. ALSO SEE APPLICABLE SPECIAL PROVISIONS.
 - (F) DOWEL ASSEMBLY DEVICES ARE TO BE FURNISHED IN WITH SUITABLE LENGTHS FOR VARIOUS WIDTHS OF PAVEMENT.
 - (G) ONE OF THE ALTERNATE DOWEL ASSEMBLY DEVICES WILL BE REQUIRED AT EACH EXPANSION JOINT WITH LOAD TRANSFERS UNLESS A BULKHEAD IS USED. SEE DRAWING NOS. RP-J-17, RP-J-18, AND RP-J-19 FOR ALTERNATE DOWEL BAR AND DOWEL ASSEMBLY DETAILS AND SPECIFICATIONS.
 - (H) SEE DRAWING NOS. RP-J-9 AND RP-J-11 FOR ADDITIONAL INFORMATION NOT SHOWN ON THIS SHEET.

- REV. 4-18-90: CHANGE DOWEL BAR LENGTH FROM 15" TO 18". DOWEL BAR ASSEMBLY DETAILS FOR SKEWED INSTALLATIONS. MODIFIED GENERAL NOTES TO REFLECT THESE CHANGES.
- REV. 3-20-91: REDREW AND REORGANIZED SHEET. ADDED DOWEL BAR SIZE TABLE. CHANGED REFERENCE FOR DOWEL BAR SIZE FROM 1 1/4" TO VARIABLE DIAMETER.
- REV. 7-29-93: REMOVED REFERENCE TO THE ORIGINAL MANUFACTURE'S NAME AND CROSS-REFERENCE TO DRAWING NO. RP-J-19. CHANGED GAGE OF BOTTOM WIRE AND VERTICAL SUPPORT WIRE FROM NO. 3 TO NO. 1.
- REV. 12-18-94: CHANGED CROSS-REFERENCE BLOCK AND GENERAL NOTE (A).
- REV. 10-26-00: CHANGED WIDTH AND DEPTH OF SAWED GROOVED CONTRACTION JOINT.
- REV. 2-2-12: CHANGED DOWEL BAR TABLE.
- REV. 05-01-20: REDREW SHEET.

CROSS-REFERENCE DRAWINGS FOR THIS SHEET: RP-J-9, RP-J-11, RP-J-13, RP-J-18, AND RP-J-19.

APPROVED BY FHWA (ALL OTHERS APPROVED BY TDOT)

STATE OF TENNESSEE
 STANDARD DRAWING
 DEPARTMENT OF TRANSPORTATION

DOWEL ASSEMBLY DEVICES