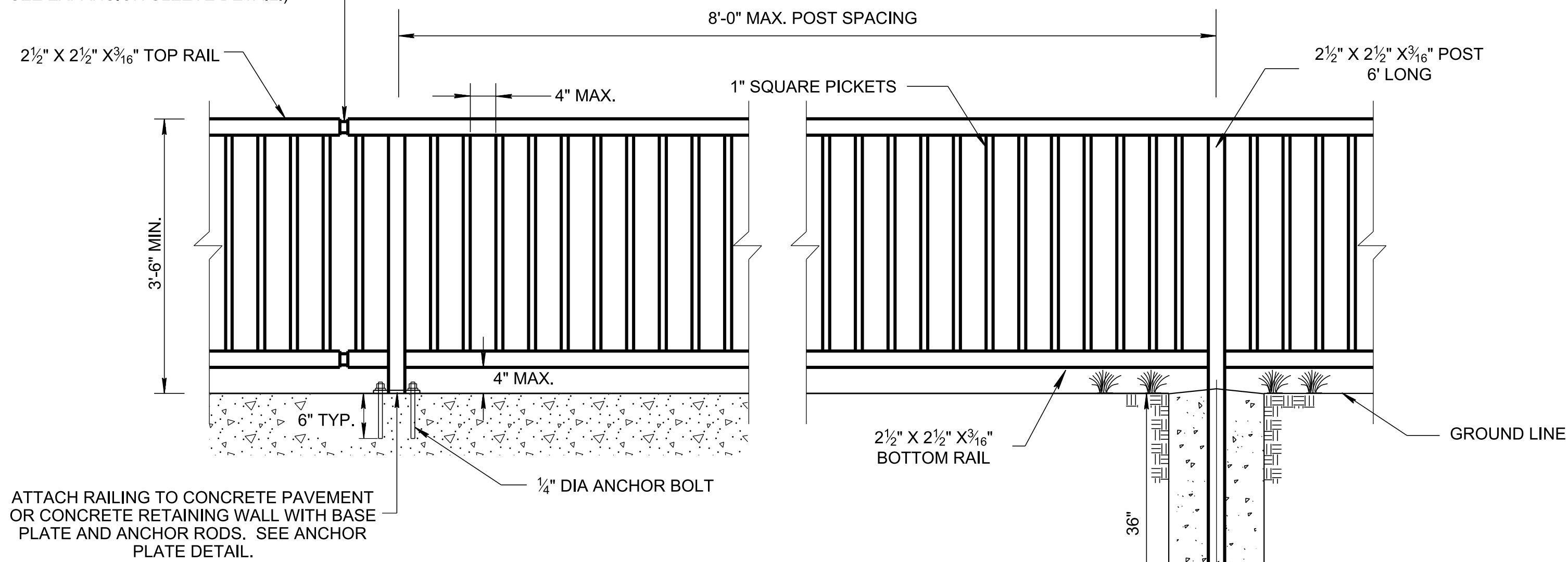
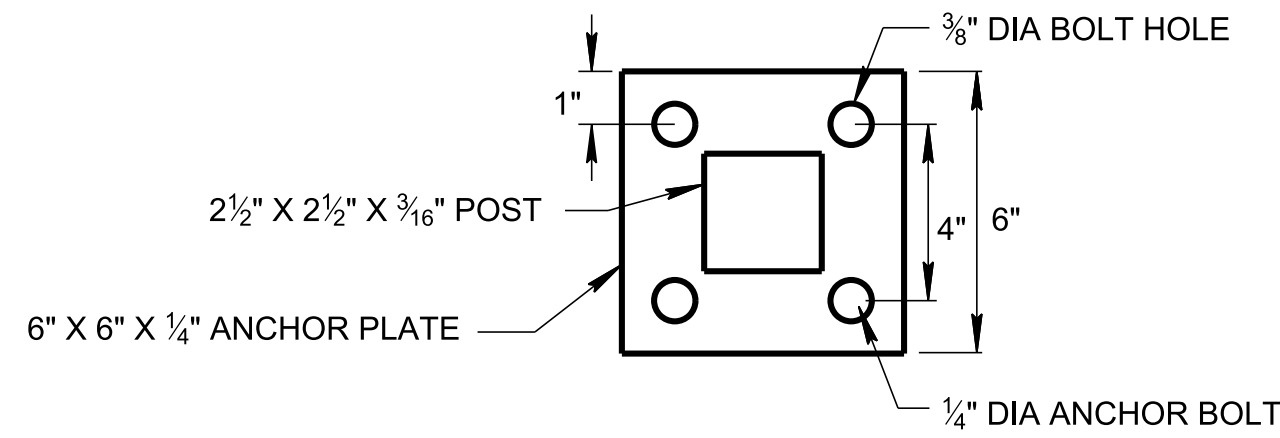


SAFETY RAIL

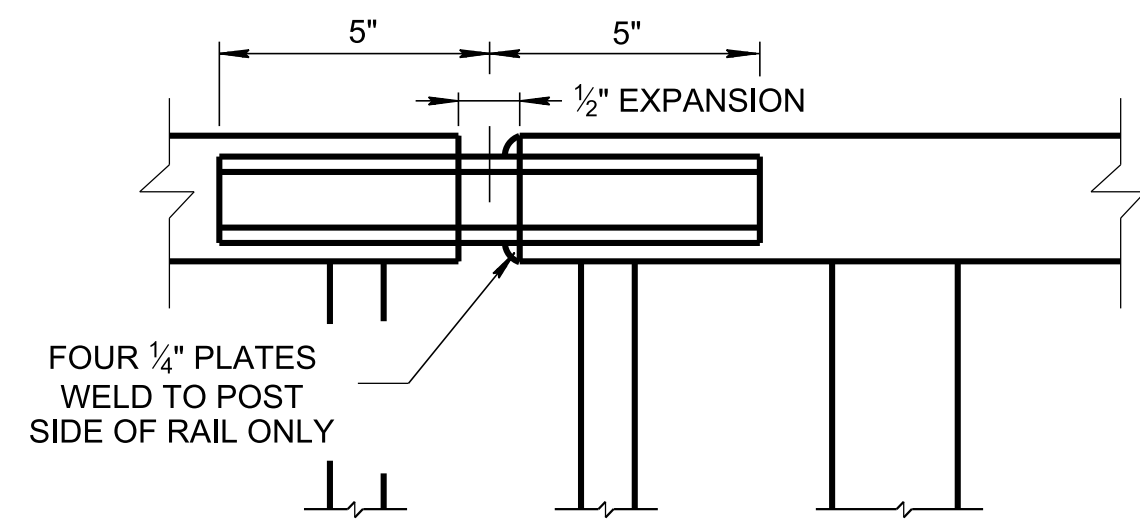
PROVIDE EXPANSION JOINT AT 48'-0" MAX. SPACING (TOP AND BOTTOM RAIL. SEE EXPANSION SLEEVE DETAIL.)



POST BOLTED TO CONCRETE



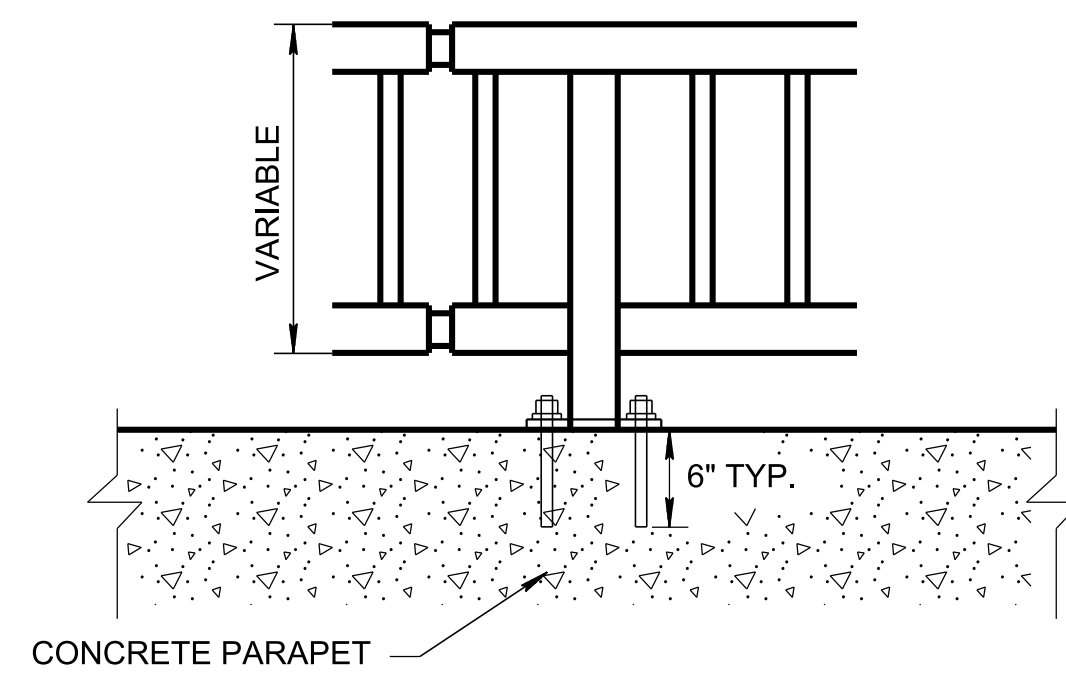
ANCHOR PLATE DETAIL



EXPANSION SLEEVE DETAIL (F)

FOR RAILING SET IN GROUND, SET POST IN HOLE AND ENCASE IN CONCRETE.

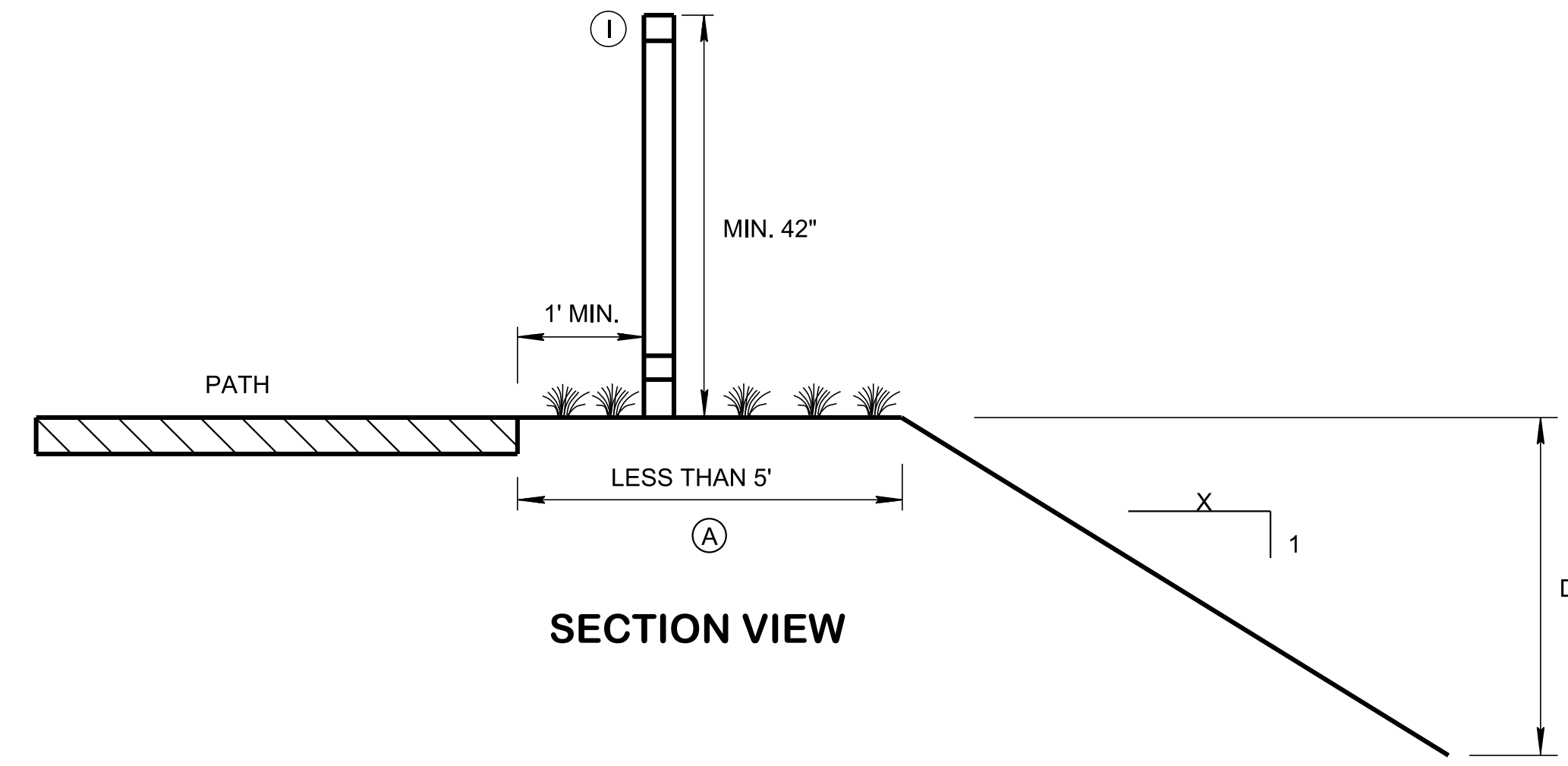
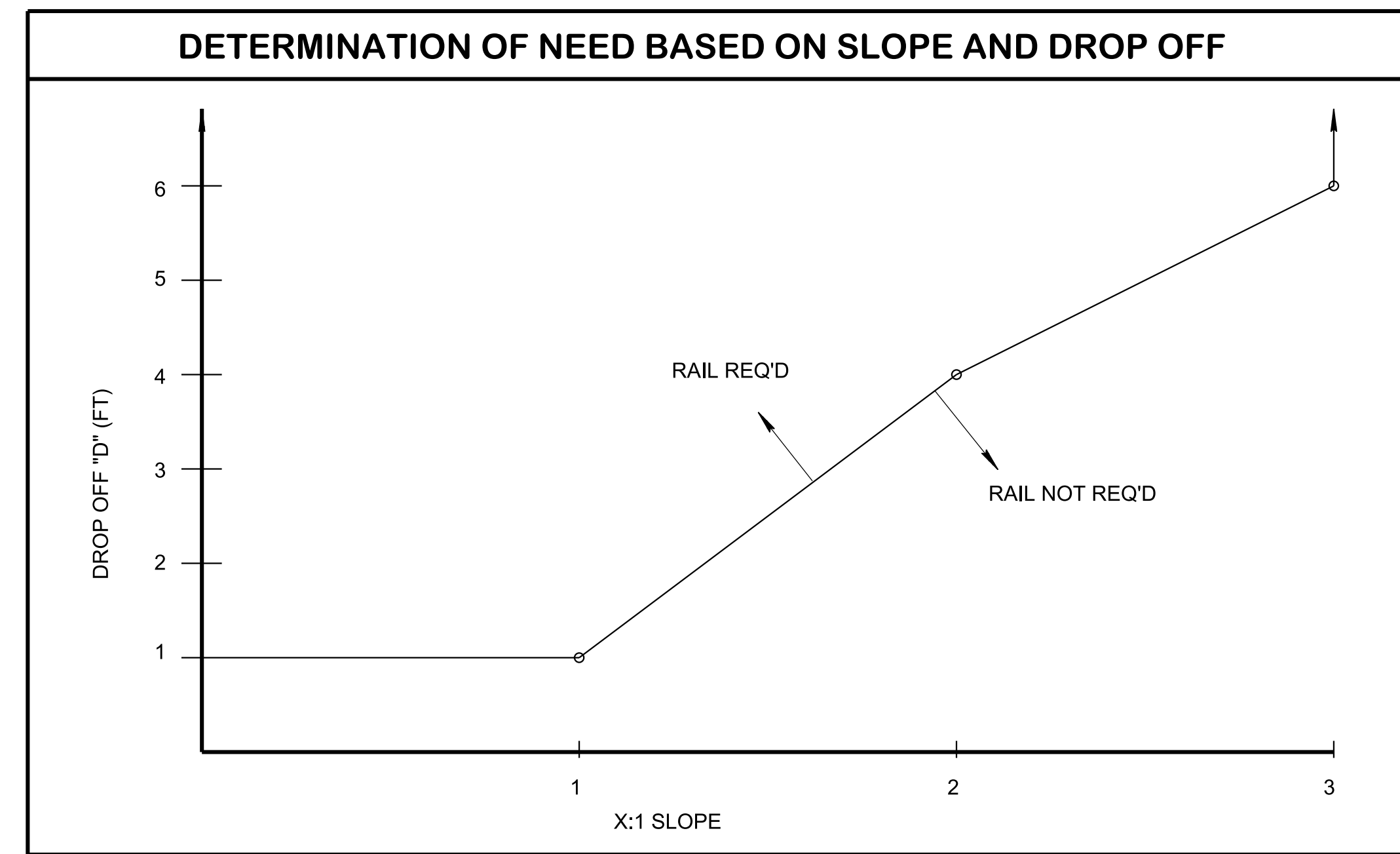
POST SET IN GROUND



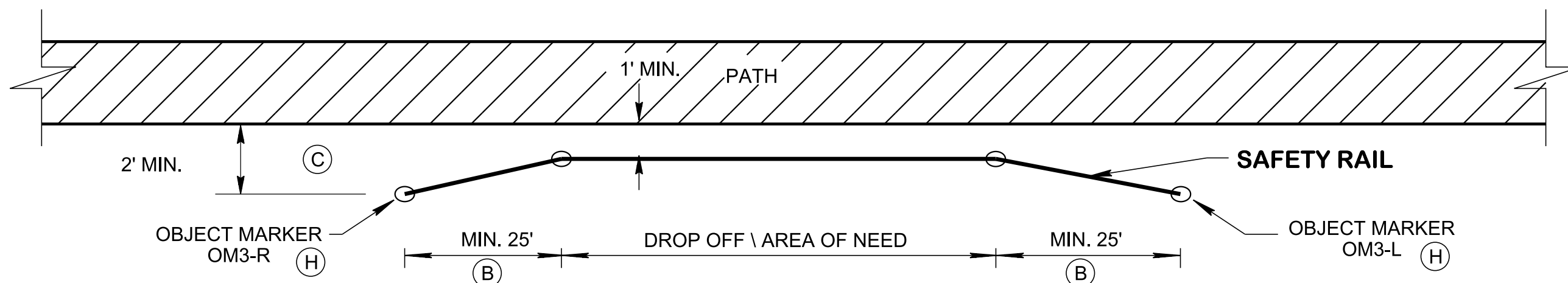
ALTERNATE INSTALLATION

RETROFITTING EXISTING CONCRETE BARRIER TO MEET MIN 42" HIGH PED/BIKE SAFE RAIL

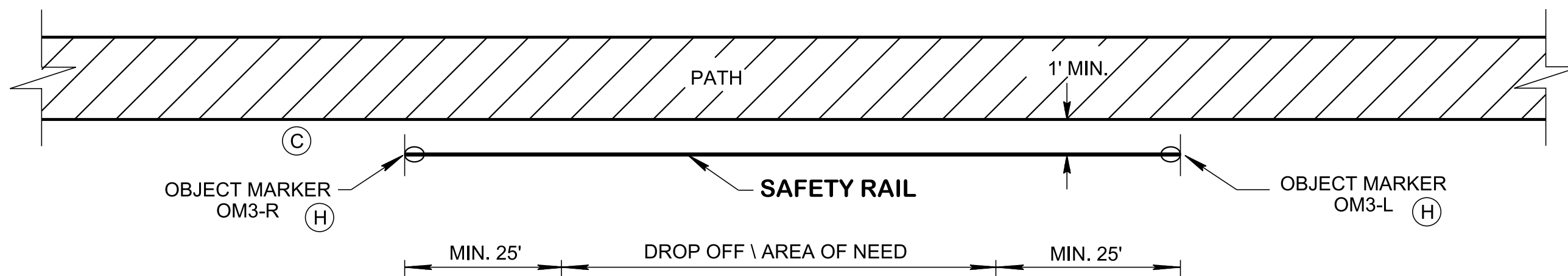
FIGURE 1



SECTION VIEW



TYPICAL PLAN VIEW SIDEWALK OR SHARED USED PATH



ALTERNATE PLAN VIEW

GENERAL NOTES

- (A) TO DETERMINE IF SAFETY RAIL IS REQUIRED, REFER TO FIGURE 1 WHEN SHARED USE PATH OR SIDEWALK EDGE DROP OFF IS WITHIN 5'. INFORMATION IS PROVIDED FOR GUIDANCE ONLY. SOME SITES MAY REQUIRE A RAIL PER ENGINEERING JUDGEMENT. IF SIDEWALK IS ALONG A ROADWAY, SEE STANDARD DRAWING S-PL-6 FOR SAFETY HARDWARE PLACEMENT.
- (B) SAFETY RAIL SHALL BEGIN 25' BEFORE AND EXTEND 25' BEYOND AREA OF NEED.
- (C) SAFETY RAIL ENDS SHALL BE FLARED TO BEYOND 2' OF THE EDGE OF THE PATH OR MARKED WITH OBJECT MARKERS.
- (D) STEEL SHALL CONFORM TO ASTM A36. WELD ALL COMPONENTS USE 3/16" FILLET WELDS. GRIND WELDS AND CONNECTIONS AS REQUIRED TO PROVIDE A SMOOTH SURFACE, FREE OF BURRS.
- (E) FIELD PAINT SAFETY RAIL AFTER INSTALLATION AS SPECIFIED IN THE CONTRACT DOCUMENTS.
- (F) DETAIL SHOWN IS FOR TOP RAIL. EXPANSION JOINT FOR BOTTOM RAIL IS SIMILAR.
- (G) SYSTEM REPLACEMENTS MAY BE ALLOWED PROVIDING THAT THE HEIGHT AND SPACING LIMITATIONS SHOWN ON THIS DRAWING ARE MET.
- (H) ALL COST ASSOCIATED WITH THE SAFETY RAIL, FURNISHING, INSTALLING AND PAINTING ALONG WITH THE OBJECT MARKERS WILL BE INCLUDES IN ITEM NO. 604-01.20, BOX TUBE SAFETY RAIL, PER LINEAR FOOT.
- (I) STANDARD RIGHT-OF-WAY CHAIN LINK FENCE, 4' HEIGHT MAY BE USED AS AN ALTERNATIVE TO THE BOX TUBE SAFETY RAIL. SEE STANDARD DRAWING S-F-10B FOR CHAIN LINK FENCE DETAILS. ALL COST OF THE OBJECT MARKERS WILL BE INCLUDES IN ITEM NO. 707-01.01. CHAIN LINK FENCE IS TO BE PAID FOR UNDER ITEM NUMBERS:

707-01.01	CHAIN-LINK FENCE (4-FOOT)	PER L.F.
707-01.02	END & CORNER POST ASSEMBLY(CHAIN-LINK FENCE 4')	PER EACH
707-01.04	GATE - CHAIN-LINK FENCE-4 FOOT (DESCRIPTION)	PER EACH

(Replaced Std Dwg S-BPR-1)

STATE OF TENNESSEE
STANDARD
DRAWING
DEPARTMENT OF TRANSPORTATION

BIKE AND
PEDESTRIAN
SAFETY
RAIL