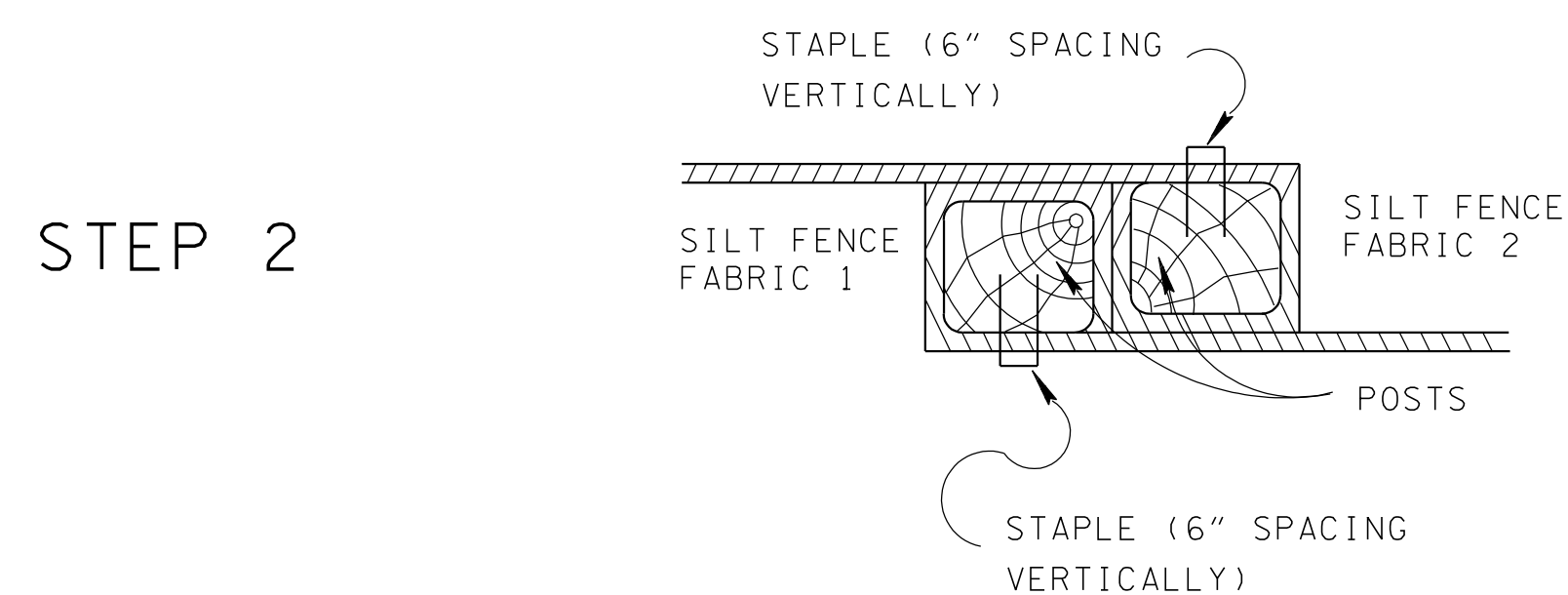
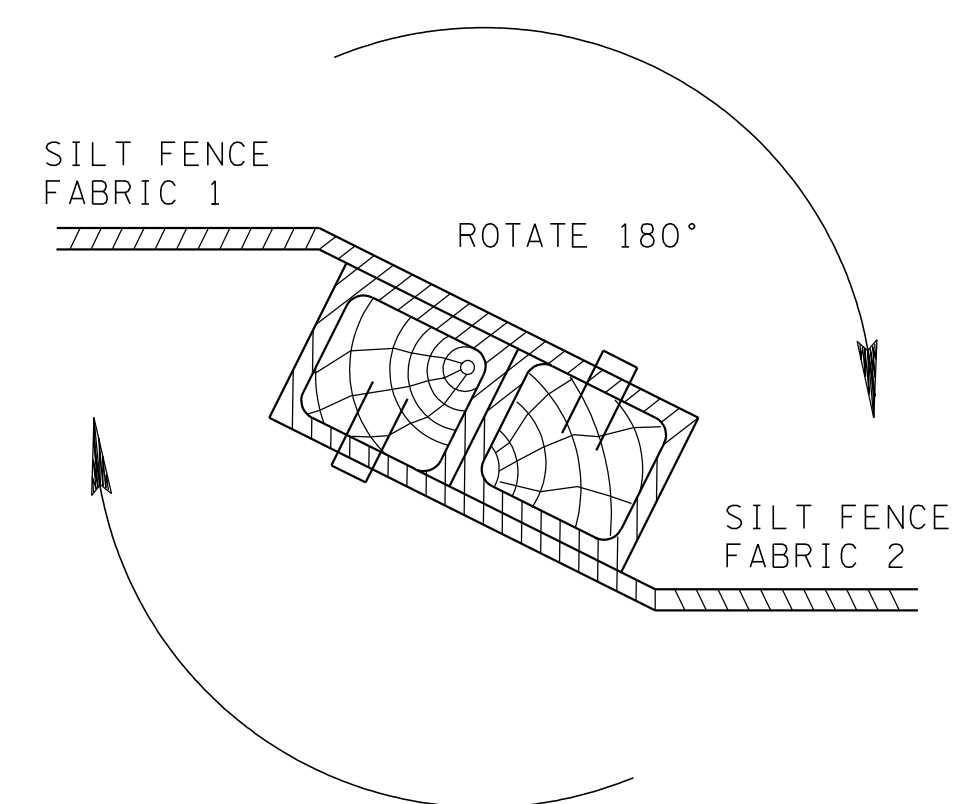


- ① WRAP FABRIC AROUND END SUPPORTS AS SHOWN AND ANCHOR FABRIC TO POSTS.
- ② POSITION POSTS/FABRIC AS SHOWN ABOVE.

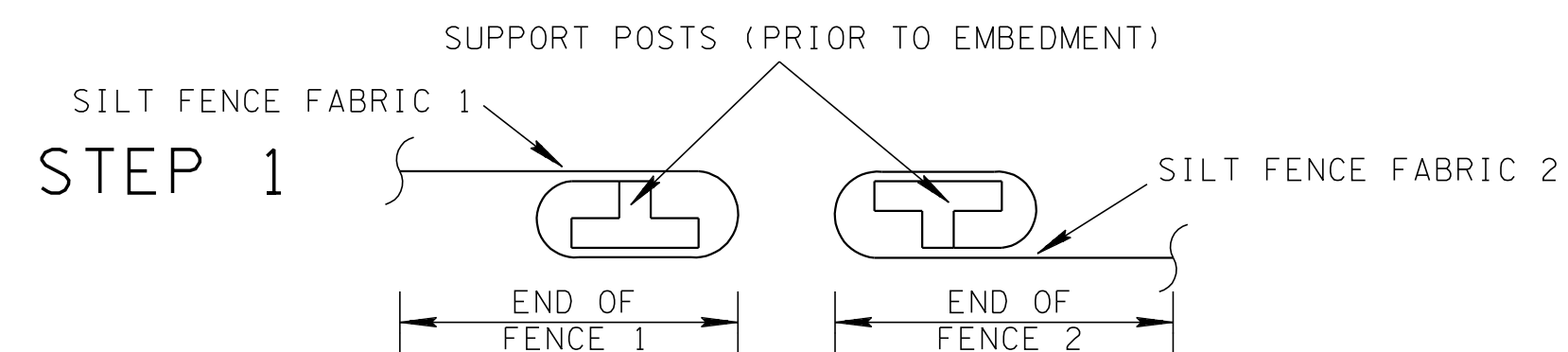


STEP 3



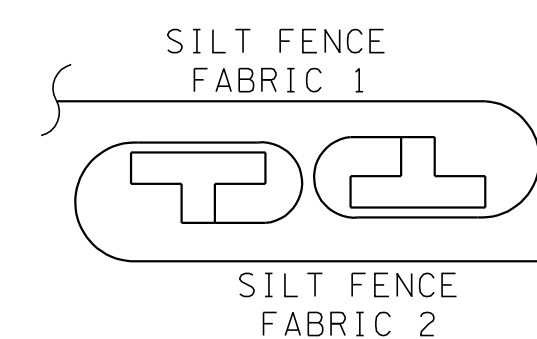
- ① ROTATE BOTH POSTS WITH FABRIC CLOCKWISE AT LEAST 180°.
- ② EMBED BOTH POSTS INTO GROUND PER SILT FENCE STANDARD DRAWING EC-STR-3B.

**PLAN VIEW**  
JOINING SILT FENCE  
FABRIC SECTIONS (WOOD POSTS)



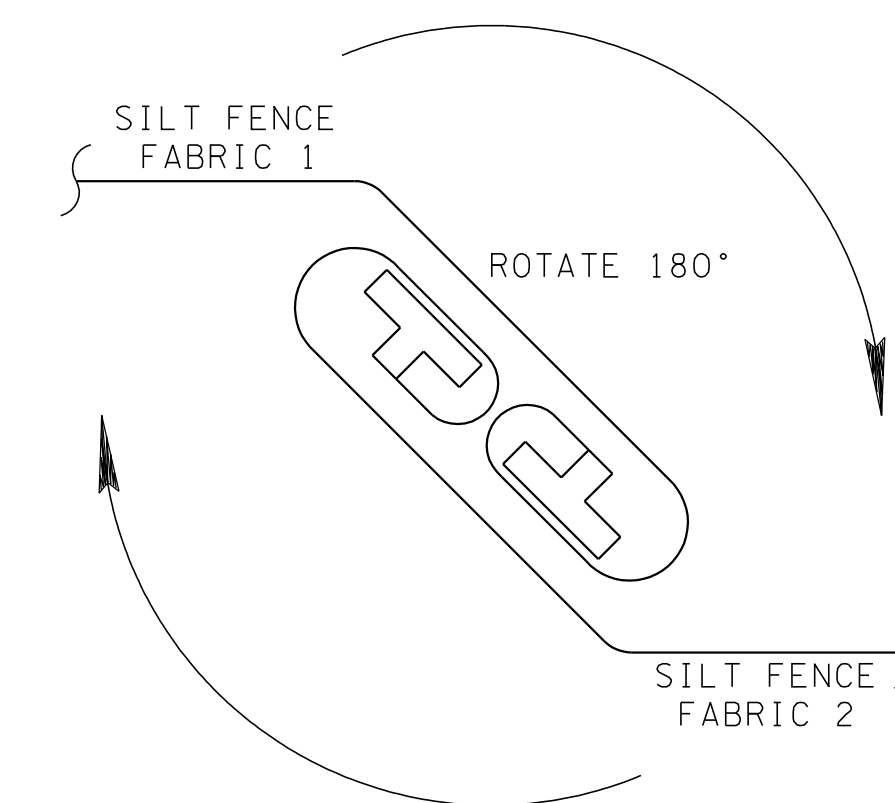
- ① WRAP FABRIC AROUND END SUPPORTS AS SHOWN AND ANCHOR FABRIC TO POSTS.
- ② POSITION POSTS/FABRIC AS SHOWN ABOVE.

STEP 2



- ① POSITION THE SILT FENCE FABRIC 2 POST INSIDE OF THE SILT FENCE FABRIC 1 POST AS SHOWN ABOVE.

STEP 3



- ① ROTATE BOTH POSTS WITH FABRIC CLOCKWISE AT LEAST 180°.
- ② EMBED BOTH POSTS INTO GROUND PER APPLICABLE SILT FENCE STANDARD DRAWING. (EC-STR-3B, EC-STR-3C, OR EC-STR-3D)

**PLAN VIEW**  
JOINING SILT FENCE  
FABRIC SECTIONS (STEEL POSTS)

MINOR REVISION -- FHWA APPROVAL NOT REQUIRED.

STATE OF TENNESSEE  
DEPARTMENT OF TRANSPORTATION

SILT FENCE  
FABRIC JOINING  
DETAILS

12-18-02 EC-STR-3E