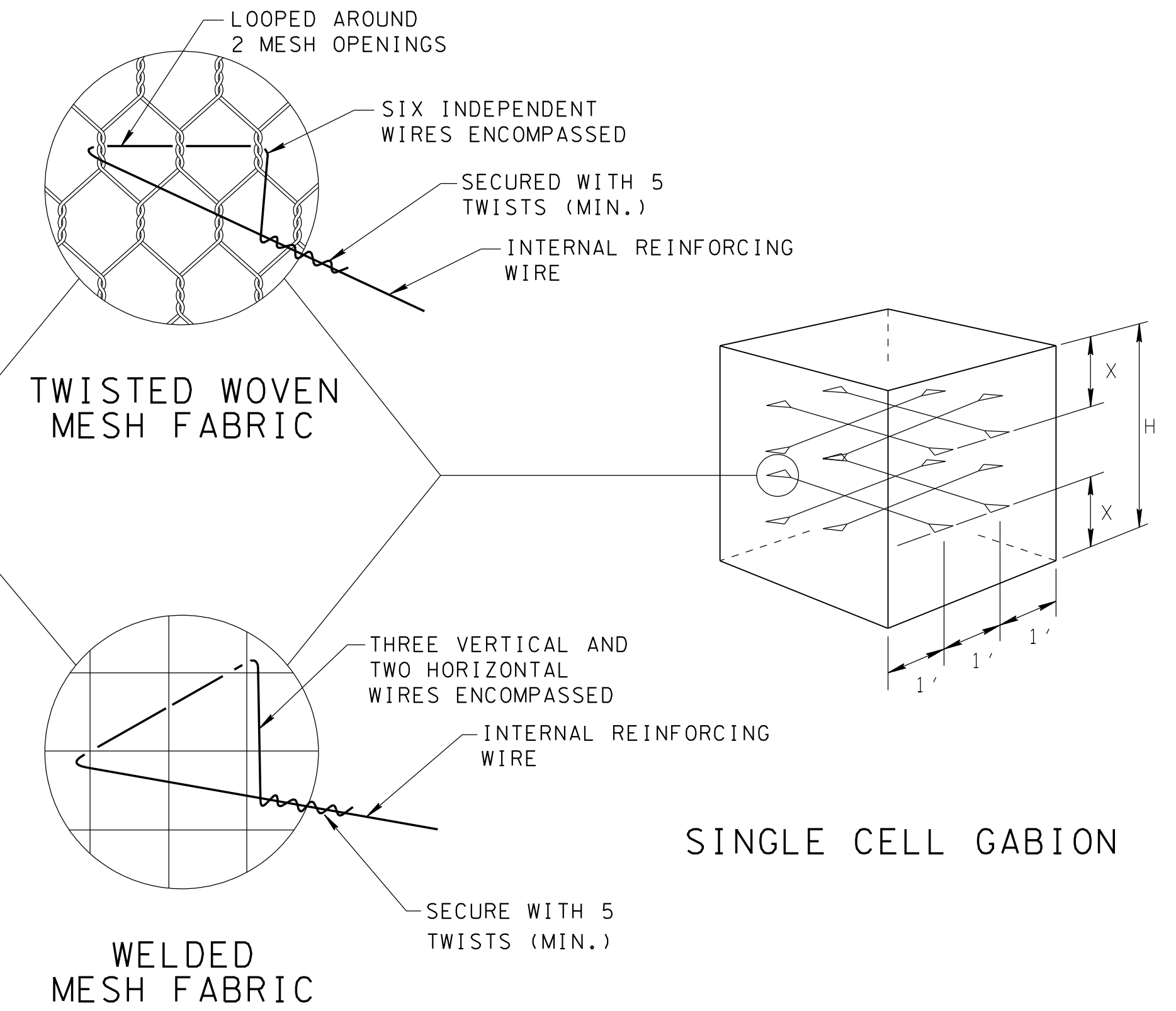
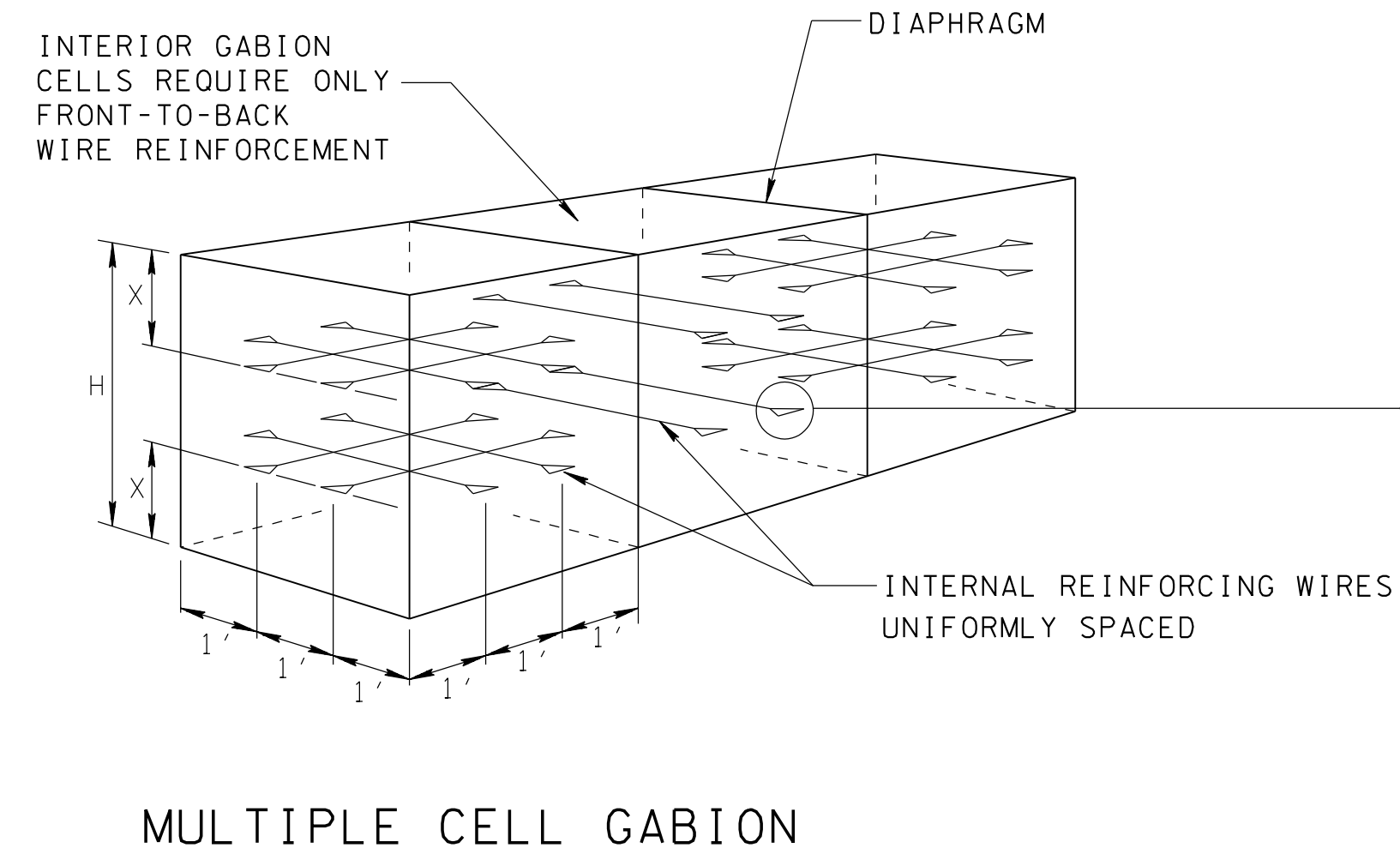


ALL GABION CELLS

| CELL HEIGHT H (FT) | DIAGONAL STIFFENER SPACING, X |
|--------------------|-------------------------------|
| 3'-0" | 1/3H & 2/3H |
| 1'-6" | 1/2H |
| 1'-0" | NONE |

OPTIONAL DIAGONAL CORNER STIFFENERS FOR WELDED WIRE GABION BASKETS ONLY
N.T.S.



| CELL HEIGHT H (FT) | TIE WIRE SPACING, X |
|--------------------|---------------------|
| 3'-0" | 1/3H & 2/3H |
| 1'-6" | 1/2H |
| 1'-0" | NONE |

PLACEMENT OF INTERNAL CONNECTING WIRE REINFORCEMENT
N.T.S.