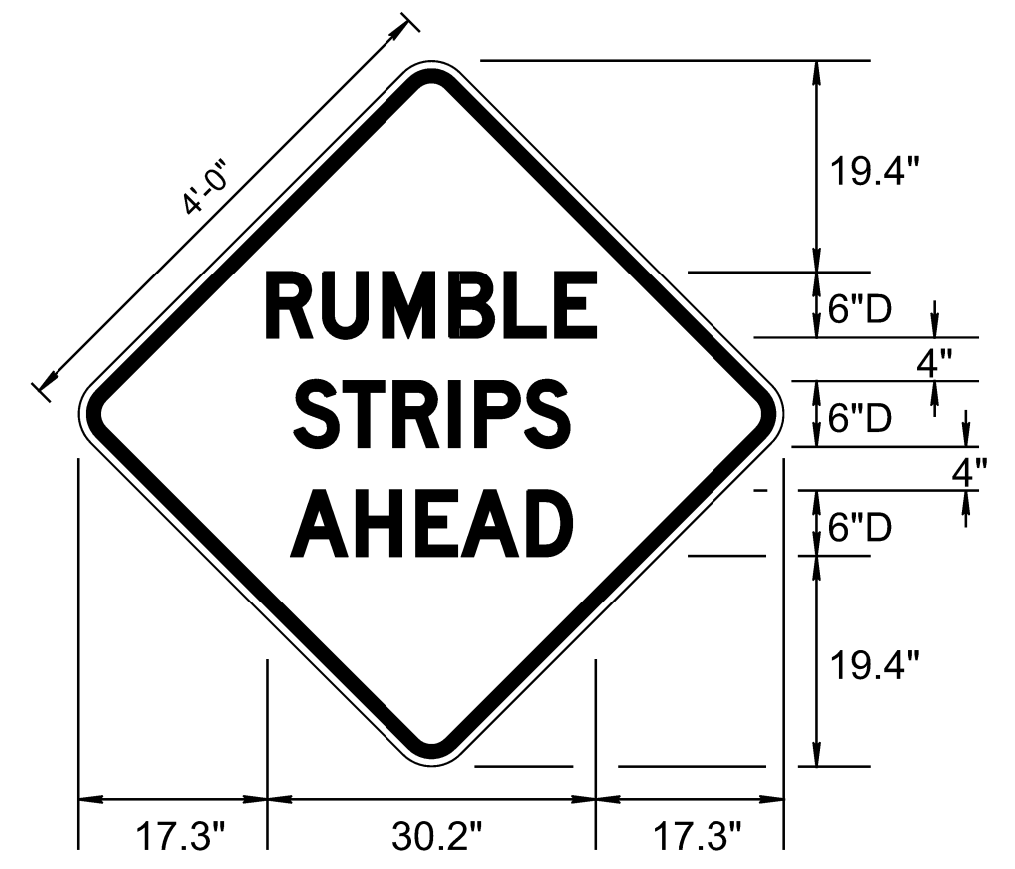
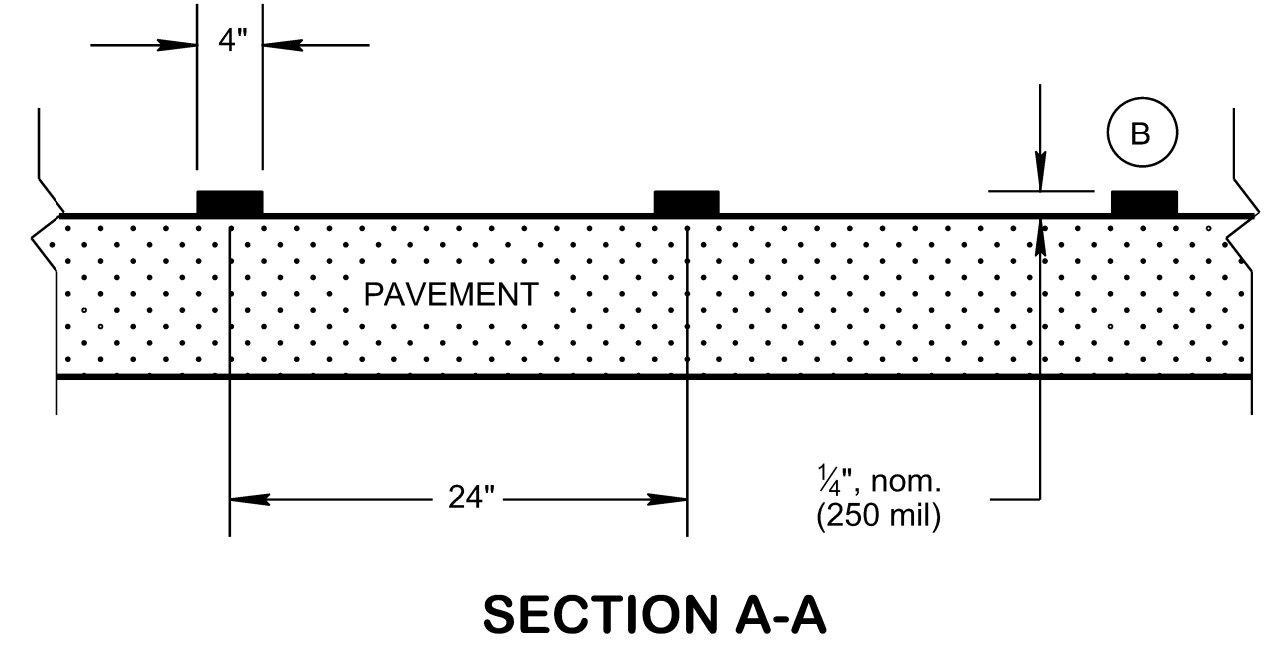
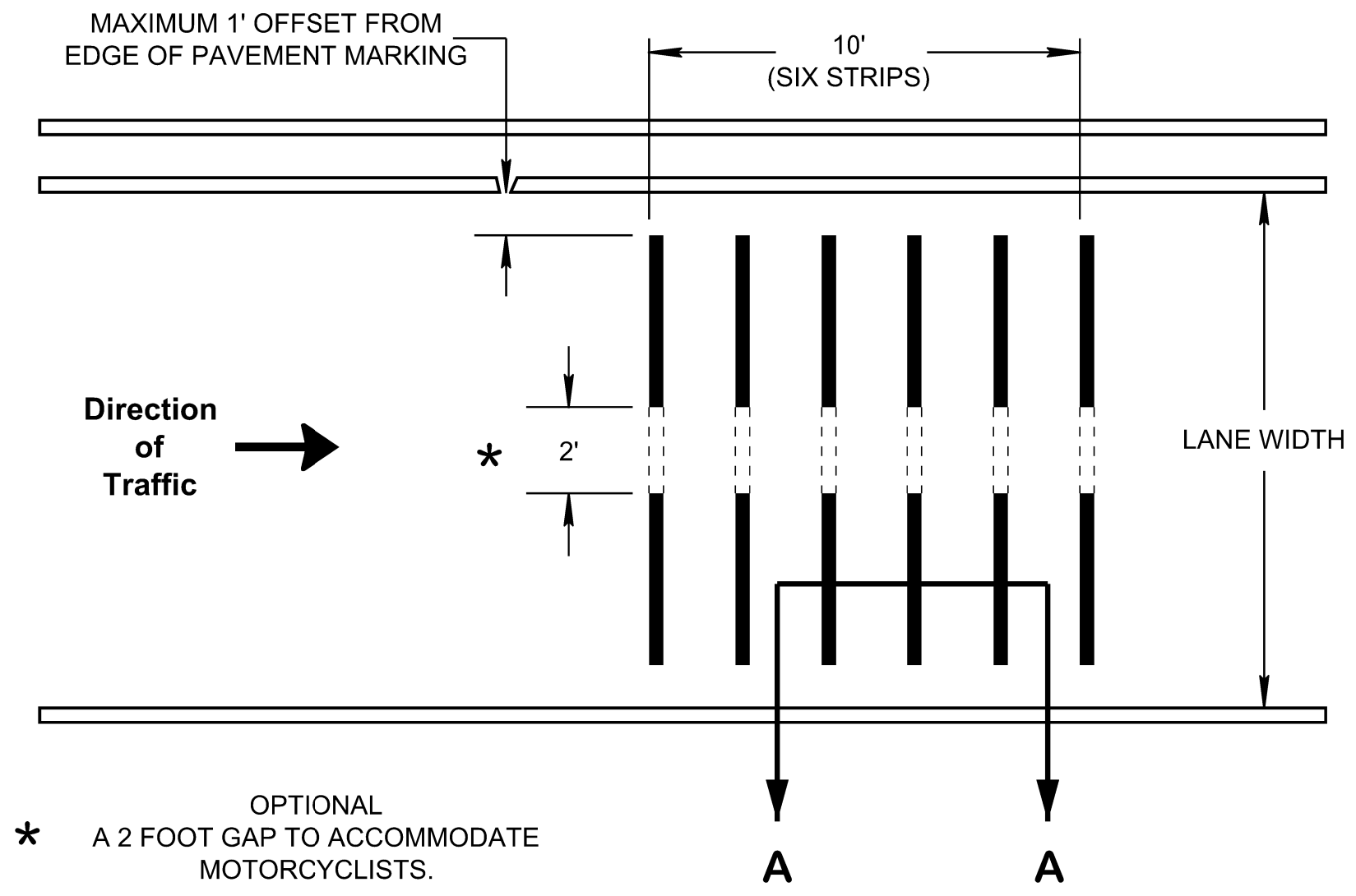


5/3/2022 11:13:43 AM P:\StandDraw\DESIGN STANDARDS\Standards Drawings Library\Standard Roadway Drawings - CURRENT\10-107.00 Design - Traffic Control --\107.02 Work Zones\Edits\TWZ56-20220204.dgn

- REV. 11-30-20: REMOVED TEMPORARY RUMBLE STRIPS DRAWING
- REV. 01-28-2022: CHANGED GENERAL NOTE(A)
- REV. 05-15-2022: ADDED TABLE 1, ADDED NOTE(H)



SPECIAL SIGN DETAIL
TN-78 (48" x 48")

SURFACE APPLIED TRANSVERSE RUMBLE STRIPS
PERMANENT / SEMI PERMANENT
THERMOPLASTIC OR APPROVED ADHESIVE PRODUCT

* OPTIONAL
A 2 FOOT GAP TO ACCOMMODATE
MOTORCYCLISTS.

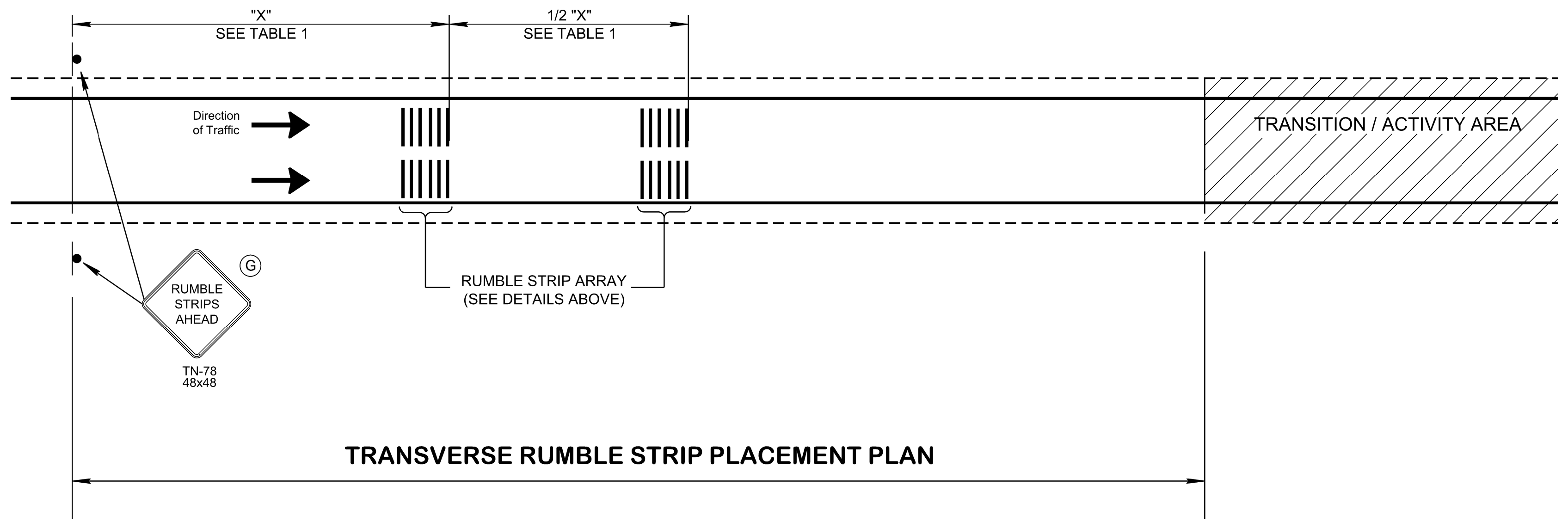


TABLE 1							
RUMBLE STRIP ARRAY PLACEMENT DISTANCE							
POSTED SPEED (MPH)	40	45	50	55	60	65	70
MINIMUM "X" DISTANCE	200'	400'	600'	800'			

- GENERAL NOTES**
- (A) REGIONAL TRAFFIC ENGINEER NOTIFICATION REQUIRED FOR USE. FOR PLACEMENT DIMENSIONS SEE TABLE.
 - (B) WHITE AND ORANGE COLORED MATERIAL IS APPROVED FOR TEMPORARY RUMBLE STRIPS (SEE QPL).
 - (C) MULTIPLE LANE ROADWAYS SHALL HAVE RUMBLE STRIP ARRAYS IN EACH THRU LANE.
 - (D) DO NOT PLACE RUMBLE STRIPS WITHIN LANE SHIFTING OR MERGING TAPER.
 - (E) PAYMENT
712-10.02, TEMPORARY TRANSVERSE RUMBLE STRIPS, L.F.
 - (F) FOR OTHER SIGN REQUIREMENTS SEE STANDARD DRAWING T-WZ-SERIES AND CURRENT EDITION OF M.U.T.C.D.
 - (G) TN-78 SIGN MAY BE ADJUSTED TO ALLOW FOR APPROPRIATE SPACING FROM OTHER SIGNS.
 - (H) SEE T-WZ SERIES FOR ALL RWLEVANT SIGNING AND DETAILS NOT SHOWN.

SPECIAL NOTE

PRECISE PLACEMENT AND SPACING OF ARRAYS AND WARNING SIGN MAY BE ADJUSTED IN ORDER TO BEST ACCOMMODATE PROJECT NEEDS AND SPECIFIC ROAD CONDITIONS. INTENT OF THESE ARRAYS IS TO ALERT DRIVERS OF TEMPORARY ROAD CONDITIONS OF INCREASED RISK SUCH AS TRAFFIC MERGING, REDUCED HORIZONTAL ALIGNMENT, ABRUPT SHIFTS, OR THE LIKE. THESE ARRAYS ARE INTENDED TO LOWER TRAFFIC SPEED AND INCREASE DRIVER AWARENESS.

STATE OF TENNESSEE
STANDARD DRAWING
DEPARTMENT OF TRANSPORTATION

TRANSVERSE RUMBLE STRIP USE WITHIN WORK ZONES

06-28-2019 T-WZ-56

NOT TO SCALE