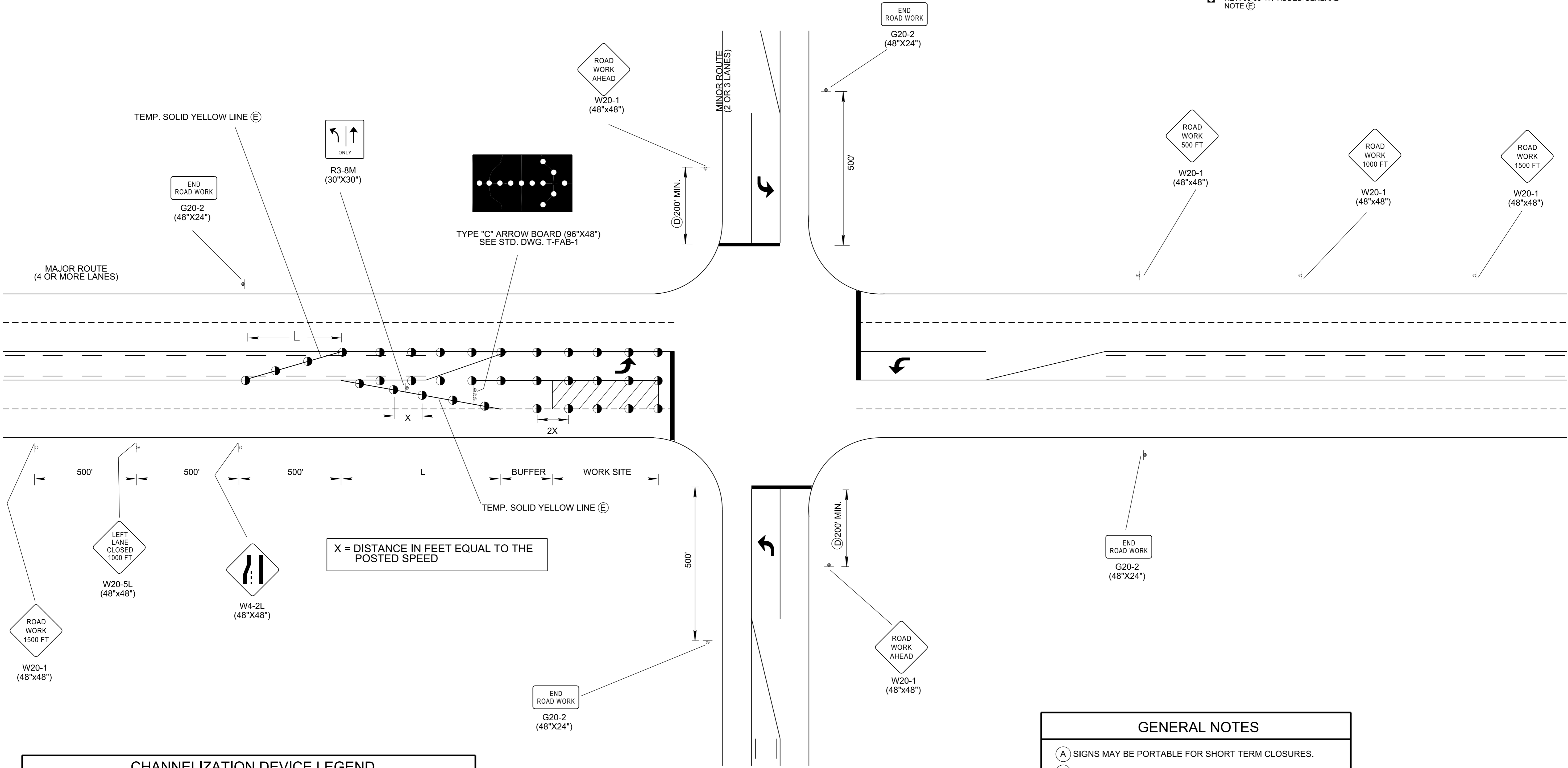


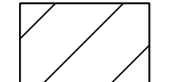
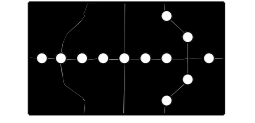


LEFT LANE CLOSURES AT NEAR SIDE OF INTERSECTIONS (FOR 40 MILES PER HOUR AND GREATER)

- REV. 9-1-05: REMOVED TYPE "C" WARNING LIGHTS FROM FLEXIBLE DRUMS IN TAPER. REMOVED TYPE "C" WARNING LIGHT NOTE FROM GENERAL NOTES.
- REV. 4-2-12: CHANGED G20-2A TO G20-2, ADDED CHANNELIZATION TO PROTECT LEFT TURN LANE.
- REV. 03-05-17: ADDED GENERAL NOTE (E)
- REV. 4-15-99: ADDED GENERAL NOTE (E)
- REV. 4-15-04: CHANGED W4-2 SIGN, CHANGED GENERAL NOTES (B) AND (C) TO COMPLY WITH 2003 MUTCD.



X = DISTANCE IN FEET EQUAL TO THE POSTED SPEED

CHANNELIZATION DEVICE LEGEND	
	FLEXIBLE DRUMS
	SIGN SUPPORT
	WORK SITE
	FLASHING YELLOW ARROW BOARD (SEE STD. DWG. NO. T-FAB-1, FOR DETAILS AND SPECIFICATIONS)

COMPUTATION FOR DISTANCE L	
$L = W \times S$	(FOR POSTED SPEEDS OF 45 MPH OR GREATER)
$L = \frac{W \times S^2}{60}$	(FOR POSTED SPEEDS OF 40 MPH OR LESS)
L = TAPER LENGTH IN FEET W = WIDTH OF OFFSET IN FEET S = POSTED SPEED	

GENERAL NOTES	
(A)	SIGNS MAY BE PORTABLE FOR SHORT TERM CLOSURES.
(B)	FLEXIBLE DRUMS OR CONES MAY BE USED FOR SHORT TERM LANE CLOSURES (DAY TIME ONLY). FLEXIBLE DRUMS SHALL BE USED FOR LONG TERM (OVERNIGHT) CLOSURES.
(C)	SEE TABLE 6C-2 OF PART VI OF THE MANUAL ON UNIFORM TRAFFIC CONTROL DEVICES (MUTCD) FOR RECOMMENDED LENGTHS OF BUFFER SPACE WHICH ARE BASED ON STOPPING SIGHT DISTANCE AS A FUNCTION OF SPEED.
(D)	SEE TABLE 6C-1 OF PART VI OF THE MANUAL ON UNIFORM TRAFFIC CONTROL DEVICES (MUTCD) FOR GUIDELINES FOR ADVANCE WARNING SIGN SPACING TO BE USED TO DETERMINE DISTANCE FOR "ROAD WORK AHEAD" SIGN TO BE PLACED PRIOR TO INTERSECTION.
(E)	SEE TDOT ROADWAY DESIGN GUIDELINES SECTION 4-716.11 FOR LINE WIDTH AND SECTION 4-716.30 FOR MATERIAL TYPE.

MINOR REVISION -- FHWA APPROVAL NOT REQUIRED.

**STATE OF TENNESSEE
DEPARTMENT OF
TRANSPORTATION**

**LEFT LANE
CLOSURES
AT NEAR SIDE
OF INTERSECTIONS**

28-APR-2017 14:02 \\AG03SDCWF00008.net.ads.state.in.us\13\SHARED\StandDraw\DESIGN STANDARDS\StandDraw\Traffic Control\Work Zones\Current\TWZ41-20170305.DGN